

The Community@NE66 Charitable Trust

Charity No. 1171202

Trustees' Report and Unaudited Accounts

31 December 2022

	Pages
Trustees' Annual Report Independent	2
Examiner's Report	11
Statement of Financial Activities	12
Balance Sheet	13
Notes to the Accounts	14

# Community@NE66 2022 Annual Report

## Chairs Report

Coming out of the pandemic and, after two years of rapidly responding to continuously evolving community needs, 2022 presented opportunities for us to review our mission statement and key principles.

Is the promotion and building of healthy relationships effective to support vulnerable children, young people and families, especially those who are at risk of exploitation and risk taking? And are these still the needs of our community?

After consulting with our community, partners and taking time as a team, we learnt that additional needs had arisen that required our focus, these being: hardship, isolation, loneliness, grief, poor mental health, increased dependency on substance use, limited access to services, and individual and collective social and emotional development. To meet these needs we had to develop a more refined strategic approach, and greater complexity demanded working in a more detailed way over a longer period of time with clients. Our focus areas became:

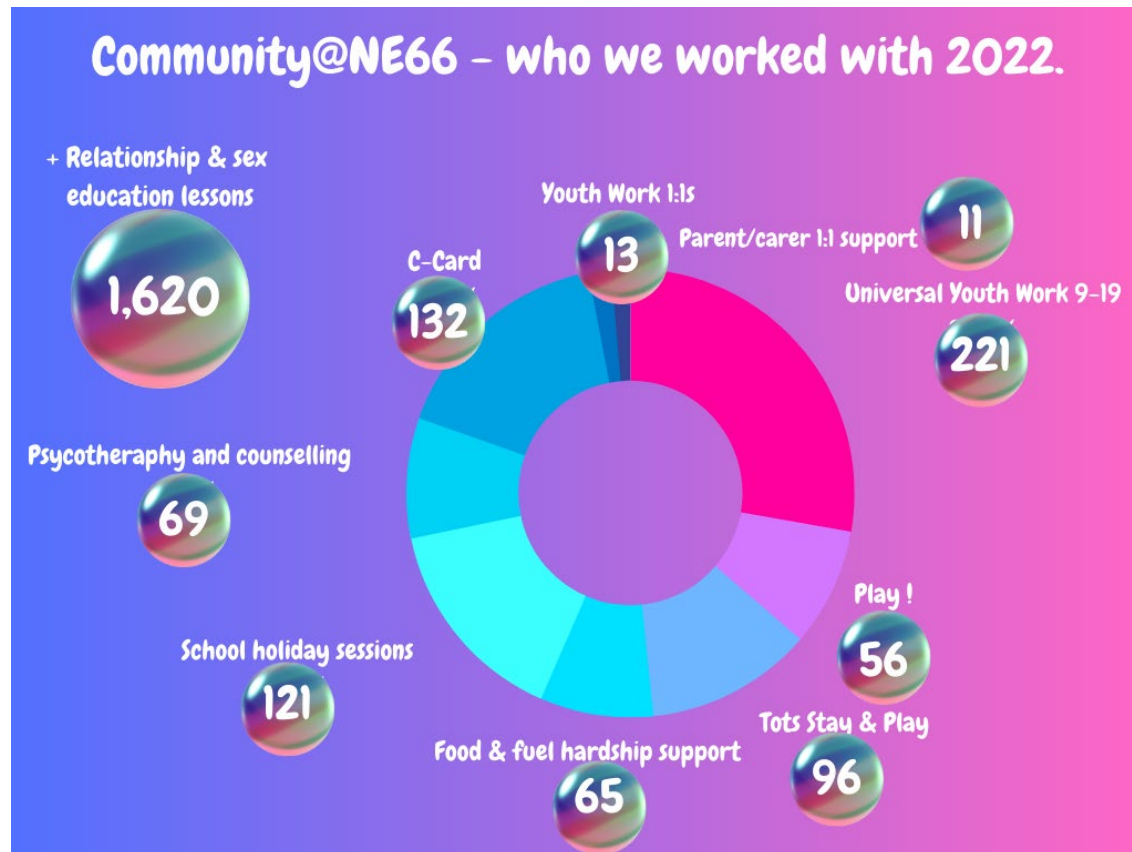
- **supporting self-regulation and healthy coping mechanisms**
- **ensuring basic needs are met first**
- **reinforcing and practising foundation skills**
- **fostering and developing adaptive practice**
- **long term and consistent support for vulnerable families and school holiday activities**

The Trust is acutely aware that, for our services to be impactful, longevity and sustainability is paramount. To ensure that our services remain in the geographic area of greatest need we negotiated a lease for Alnwick Community Centre with Northumberland County Council. The building fabric had been neglected for over a decade and we were successful in petitioning for a new roof. We would like to thank our local churches for their support and their donations which enabled the Trust to cover the Surveyor costs, and Amazon Legal Services Ltd for providing pro bono legal support for this process. Without this support we would not have been able to secure a tenancy and our community would have lost our services.

The nationwide 'cost of living crisis' impacted our ability to heat the building during the winter months and we moved to hybrid working outside and face to face delivery. The increase in commuting costs for our team, working across a dispersed rural area, led to a period of increased staff turnover, something we have not experienced before. At the conclusion of the

year we approached Children in Need and other funders with a staffing restructure proposal which we hope will enable us to recruit and retain professionally qualified team members.

Despite these challenges, this year we had many successes at Community@NE66 and we are excited to share these with you in this report.



### Supporting Self-regulation and Healthy Coping Mechanisms

*Self-regulation is the ability to manage your emotions and behaviour in accordance with the demands of the situation. It includes being able to resist highly emotional reactions to upsetting stimuli, to calm yourself down when you get upset, to adjust to a change in expectations, and to handle frustration without an outburst. It is a set of skills that enables children, as they mature, to direct their own behaviour towards a goal, despite the unpredictability of the world and our own feelings.*

Our practitioners have observed a more prevalent and significant correlation between those young people who struggle to self-regulate, those who partake in risk taking and who develop unhealthy coping mechanisms. In addition to reviewing our Play & Youth environments to promote self-regulation we addressed this need with **active listening, wellbeing education, and counselling and psychotherapy.**

### **Active Listening and Wellbeing Education - Youth Work 1:1s & Healthy Relationships**

**Support:** Matching our Children in Need's Grant allocation for our Project Manager/Designated Safeguarding Lead's time with commissioned referrals for 1:1 work with young people to support healthy relationships from The Duchess' School Trust, Community@NE66 Charitable Trust were able to provide long term 1:1 support for 13 young people both at the Community Centre and Duchess' Community High School. These sessions offered education, signposting and referrals for sexual health, healthy relationships and consent and were a confidential and non-judgemental space for young people to open up. The needs highlighted through this work involved supporting people with Autism Spectrum Disorder to cope with the changes of puberty, and providing safe spaces for LGBTQIA+ young people and those at risk of harm from unhealthy relationships.

**Counselling and Psychotherapy - Community Mental Wellbeing Project (CMWP):** This project provides free counselling and psychotherapy to children, young people and their significant adults who do not meet the criteria of statutory services to gain help. The focus is on improving the mental wellbeing of individuals, families and our community.

69 people worked therapeutically with our CMWP team which was overseen and coordinated by a psychotherapist with adult, child & adolescent specialisms. The CMWP team consisted of 7 volunteers training in the areas of psychotherapeutic counselling, integrative counselling & psychotherapy counselling. An overview of the CMWP's client's needs demonstrated that the prevailing issues presented were: OCD, self harm and suicidal ideation, grief and loss, complex physical health issues, unrecognised neuro-diversity, and trauma relating to domestic and sexual abuse.

We would like to take this opportunity to thank our volunteers and their training organisations the Northern Guild of Psychotherapy and Tyne Metropolitan University.

This project is delivered with funding support gratefully received from:

- Co-op Local Cause
- Duchess' Community High School (Commissioned Services)
- William Leach Foundation (Northumberland Community Foundation)
- Magic Little Grants
- Garfield and Weston Foundation

To ensure the sustainability of this project the Trust successfully tendered and secured the 3 year delivery of Psychotherapy & Counselling commissioned services to Duchess' Community High School. This income allowed us to secure 40% of the total project costs giving a consistent source of match funding for community delivery.

## **Ensuring Basic Needs Are Met First**

**Surplus & Fresh Food Parcels:** Our Trust has a longstanding relationship with Neighbourly who connect our community centre with local supermarkets Aldi, Lidl, M&S and Sainsbury's. Each week we continue to be notified of any surplus food that is available to collect by staff and this is added to the emergency food parcels that we provide to families and individuals suffering from food poverty. Money that we have secured from funders is used weekly to purchase a selection of fresh fruit and vegetables, milk, bread, eggs and alternating non-perishable items such as rice, pasta and tinned tuna. In 2022 we provided 320 emergency food parcels to over 18 clients with the number of households in need of support doubling from January to December in 2022.

*Our thanks for funding are extended to Newcastle Building Society, Sainsbury's, Alnwick Town Council, Private Donors.*

**Emergency Utility Microgrants:** The Trust made 11 microgrants (paid directly to suppliers) to families who were unable to heat their homes, and we made additional purchases of phone top-ups and bus tickets to support those experiencing hardship to enable them to attend appointments and interviews. We provided immediate support whilst we worked with families to explore Early Help Family Team or Citizen Advice Bureau, Northumberland Communities Together referrals.

**School Uniform:** 21 families attended our Preloved School Uniform Pop-up which was delivered in partnership with the Northumberland School Uniform Network.

**Christmas Eve Pop Up Shop:** With thanks to donations from Morrisons in Alnwick, Barndale House School, Sainsbury's and Aldi we were able to host our annual Christmas Eve food and present pop-up. We would like to extend our thanks to our Senior Drop-in members for wrapping all the gifts on Christmas Eve morning.

## **Reinforcing and Practising Foundation Skills**

*Community@NE66 considers foundation skills to be the social, emotional and practical skills that allow children to participate and engage in 'day to day' life safety and gaining the most out of their experiences. These skills are wide ranging and include road crossing, use of cutlery, sharing, and being able to verbalise wants and needs.*

**Saturday Morning Play:** These weekly sessions provide children with an informal environment to engage with music, dance, building and construction, role play, arts and crafts, sensory play, environmental and community challenges, mindful activities like yoga and guided meditations,

team games and challenges, and outdoor play. In 2022, 56 children attended our Play session. The intended impact of these activities are:

- Fine and gross motor, and coordination skill development.
- Development of emotional literacy explored in mindful play.
- Risk taking in play - *experimenting and pushing boundaries is an important part of growing up. Young people need opportunities to learn about their world in ways that provide challenge and excitement through positive things to do and opportunities to play. (Department of Health, 2004)*
- Complex cognitive and social development through role play
- Improving literacy and numeracy through integrating maths and English in play activities.
- Supporting speech, language, and communication skills outside of a school setting - 10% of children in the UK have an assessed speech, language, and communication difficulty this rises to 50% of children in areas of multiple deprivation.
- Literacy and numeracy in play supporting learning outside of the classroom.

These sessions allow our team members and organisation to build positive attachments with younger children which remain with them as they progress to our Youth Work provision and preventative work. This in the greater context allows us to not just 'fire fight' in our Youth Work provision.

*Our thanks are extended to Sir James Knott for funding this work.*

**Tots Stay and Play:** Our team members facilitated sessions in a safe and stimulating environment offering a range of activities to 91 tots including music and movement, story and rhyme, arts & crafts, sensory play, routine, repetition tasks, negotiation and sharing tasks. Through these sessions, we can support infants and toddlers in their development of physical play, literacy, language and communication and cognitive skills. These sessions have as much impact on the adult parent/carers as the social networks being built prevent isolation and promote information sharing and support. Our workers are available to check in with parents/carers. Those identified as needing additional support can be referred to the Early Help Family team, offered utility and food hardship support, and an active listening and counselling service.

*Our thanks are extended to Sir James Knott for funding this work.*

## **Fostering and Developing Adaptive Practice**

**Junior Youth Groups:** Our Junior Lads and Girls groups whilst focussing on specific genders, welcome anyone who is comfortable in these spaces. 32 young people attended Junior Lads and 36 attended Junior Girls. They all took part in weekly youth-led sessions.

Our Junior Youth Work focuses on preventative activities and building resilience. This allows our young people to build effective and positive relationships with workers before the age of increased risk taking. Youth workers will promote positive coping methods and support young

people to build resilience and self-esteem. We have observed the impact of Covid is greatest amongst this group. To support these young people our team has engaged with learning around adaptive youth work.

*We extend our thanks to BBC Children in Need for funding this work.*

**Therapeutic Techniques Applied to Youth Work:** In the Spring, 5 of our team members attended an introduction to sand tray therapy to support their 1:1 work with young people who need alternative methods to support self expression and storytelling.

*We would like to thank Alnwick Town Council for this funding.*

**Cooking Classes:** The aim of our community cooking classes was to provide families with the opportunity to learn how to cook healthy, nutritional meals together as a family unit at the community centre. Meals were specifically chosen to be nutritionally balanced, quick and easy to complete, and easily adaptable to contain other ingredients. There were 4 evening cookery sessions in total which enabled 6 families with 8 children from 11+ yrs old to take part. The meals included Easy Cheesy Frittata, Tuna Pasta Bake, Open Chicken Lickin Pies and Potato, Pesto & Sausage Tray Bake. The sessions enabled young people to have the confidence to cook, to have fun whilst doing so and develop lifelong, basic cooking skills.

*We extend our thanks to Sainsbury's for their funding of this work.*

## **Long Term and Consistent Support For Vulnerable Families and School Holiday Activities**

***Easter & Summer: We continued to develop our #HAF provision in partnership with the Department of Education, Leading Link and Northumberland Together.***

Easter 2022 saw 63 children attend our Holiday Activity Funded sessions which ran 4 times per week for 4 hours each session. The Trust was pleased to offer breakfast and a cooked or packed lunch at each session. Thanks to our partnership working with local supermarkets we were also able to offer lunches to siblings in each family of all the children who attended the sessions.

We provided 8 sessions during Easter for 4-8s, 9-12s and 13-18 year olds. The average attendance for each session was 15 young people.



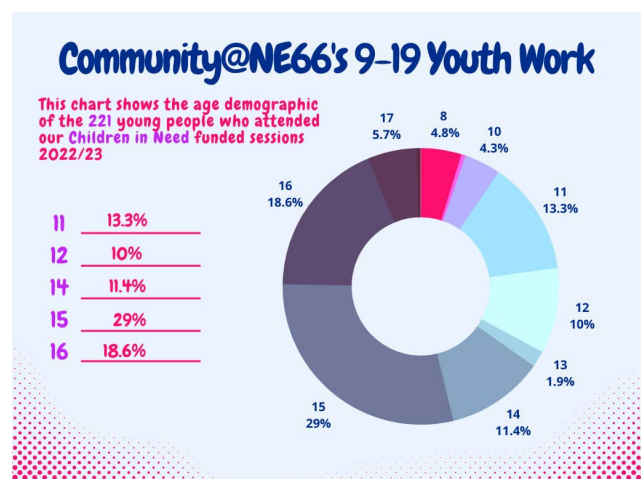
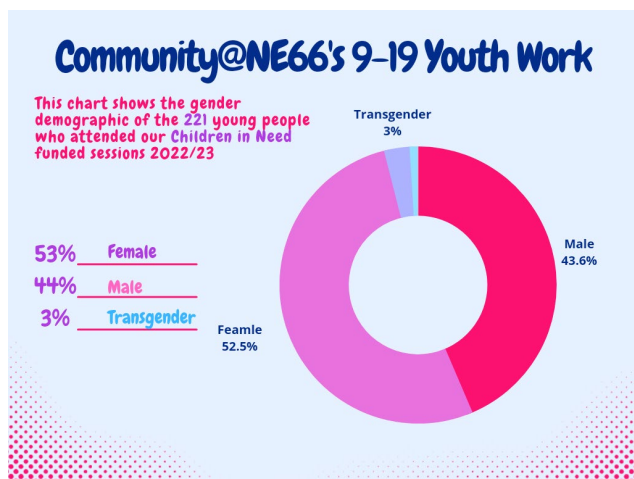
In Summer we expanded this provision with a focus on learning 'out and about' as requested by the young people. 86 children and young people attended our 16 summer sessions with an average attendance of 16 children and young people per session.

**Safeguarding:** In this reporting year we had 56 individual safeguarding concerns. The most frequent concerns we had related to (1) self harm, (2) complex child mental health issues, (3) complex adult mental health issues, (4) child exploitation - County Lines and (5) child sexual exploitation. 85% of all concerns were initial disclosures to our Youth Work Team.

**Upskilling:** The team had the opportunity to upskill in the following areas this year: Statutory SRE provision, Counselling Skills, Detached Work, C-Card, refreshing Designated Safeguarding Person training, LGBTQIA+ inclusivity in Youth Work. Given the increase in child exploitation, we commissioned Brook to deliver a day course focussing on awareness and safeguarding of the **exploitation of boys and men**.

**Parent/carers Support:** Given the prevalence of complex safeguarding issues and parents/carers struggling with mental health issues, our team has worked intensively with 11 families advocating and offering supportive listening.

**Providing Safe Spaces:** *"When we are safe we can aspire."*



**Friday Night Senior's Drop-in:** This year, 131 young people aged 13-18 attended our Friday night safe space which runs from 5:00-8:00 pm providing youth-led activities, a hot meal, information and support. Our detached work paused in the Summer whilst we looked to recruit team members with a background in detached work in areas of contextual safeguarding concerns.

*"If this wasn't here, we'd just be sat in the bus station and everything goes on there, we don't even want to be there. It's gross but where else is there?"*

**Youth Warm Hub:** Young people at our Friday night session asked if we could open for them during the day on a Saturday. With support from our Children in Need Grant Manager, we adapted some of our Youth Cafe funding and provided lunch and a warm space to 26 young people from September - December.

**Youth Cafe:** Our Youth Cafe was accessed by 84 young people. These Saturday lunch time sessions enable small focussed groups to plan and deliver a lunch 'service' for other young people. The cafe provided free food to children and young people, advice and information and very competitive board games.

**Senior Girls:** 14 young people attended our weekly Monday night group for those aged 13+ who wanted to attend a girls focussed space. This group allowed us to provide a quieter space for young women who are often not heard in high sensory mixed groups.

*Our thanks are extended to the Catherine Cookson Foundation for supporting this work.*

**Our very first Pride Event** was hosted in June at the Centre and we welcomed 22 young people who celebrated being their unique selves to all the soundtracks of Glastonbury.

**C-Card:** We carried out our drop-in sessions at Alnwick Community Centre and Duchess's Community High School working in partnership with NHS Sexual Health Services, C-Card and the Chlamydia and Gonorrhea screening service. We educated, promoted healthy relationships and sexual health, and safeguarded 131 13-25 year olds.

**RSE:** In 2022 we delivered 96 RSE sessions to 1,620 pupils. This work was commissioned by Glendale Middle School and Duchess' Community High School and combines our learning from our 'face to face' sexual health support with the Statutory National Curriculum content.

**Young Volunteers:** This instrumental role of providing and learning in safe spaces is carried out by our young people volunteers. Their positive role modelling has helped younger children be braver, more confident and inquisitive. The Trust would like to take this opportunity to thank Charlotte, Elle, Evie, Isobel, Izzi and Paige for their hard work. The Trust has also received support from adult volunteers (in addition to our trainee mental wellbeing team) and we would also like to thank Chloe and Jo for their support with our Tots & Food Surplus projects. Our special thanks go to Michael for being our volunteer caretaker and ensuring Centre life runs more smoothly.

We would like to take this opportunity to thank and recognise the following organisations with whom we have worked in partnership this year:

- Aldi, Alnwick
- Alnwick District Food Bank
- Alnwick Baptist Church
- Alnwick Mutual Aid
- Alnwick Town Council
- Amazon Legal
- Bailiffgate Museum
- Barndale House School
- Clarty Commandos - outdoor learning for all.
- Children's Services - Northumberland County Council
- Co-Op Local Champions
- Duchess' Community High School
- Duchess' High School Trust
- Early Help Families Team
- Family Hubs
- Glendale Community Middle School
- Gallery Youth
- Katherine Williams Fundraising
- LawWorks
- Lidl, Alnwick
- M&S, Alnwick
- Neighbourly
- NHS - Covid vaccinations team
- NHS One to one services
- St Michael's Church
- Sainsbury's, Alnwick
- The Alnwick Gardens

## **Reserves**

The unrestricted general funds carried forward at the end of 2022 totalled £44162. £37840 of these general reserves has been allocated to general running costs and to bridge the gap of the Community Development Worker post to allow for sustainability of the project in the coming year. Our unallocated unrestricted reserves are therefore £6122.

Independent Examiner's Report to the trustees of The Community@NE66 Charitable Trust

I report to the trustees on my examination of the financial statements of The Community@NE66 Charitable Trust for the year ended 31 December 2022.

Responsibilities and basis of report

As the charity's trustees you are responsible for the preparation of the financial statements in accordance with the requirements of the Charities Act 2011 ('the Act').

I report in respect of my examination of the charity's financial statements carried out under section 145 of the 2011 Act and in carrying out my examination I have followed all the applicable Directions given by the Charity Commission under section 145(5)(b) of the Act.

Independent examiner's statement

I have completed my examination. I can confirm that no material matters have come to my attention in connection with the examination giving me cause to believe that in any material respect:

- the accounting records were not kept in respect of the charity as required by section 130 of the Act; or
- the financial statements do not accord with those records; or
- the financial statements do not comply with the applicable requirements concerning the form and content of financial statements set out in the Charities (Accounts and Reports) Regulations 2008 other than any requirement that the financial statements give a 'true and fair' view which is not a matter considered as part of an independent examination.

I have no concerns and have come across no other matters in connection with the examination to which attention should be drawn in this report in order to enable a proper understanding of the financial statements to be reached.



Kay Wightman FFA FTA  
Accounting for Good CIC  
2 Geordie Ridley Place  
Upper Precinct Wesley Court  
Blaydon on Tyne  
Tyne and Wear  
NE21 5BT  
23 October 2023

The Community@NE66 Charitable Trust  
Statement of Financial Activities  
for the year ended 31 December 2022

	Notes	Unrestricted funds 2022 £	Restricted funds 2022 £	Total funds 2022 £	Total funds 2021 £
Income and endowments from:					
Donations and legacies	3	15,661	25,000	40,661	10,944
Charitable activities	4	5,777	93,283	99,060	101,840
Other trading activities	5	3,237	-	3,237	80
Other	6	22,931	-	22,931	-
Total		47,606	118,283	165,889	112,864
Expenditure on:					
Raising funds	7	118	-	118	-
Charitable activities	8	2,923	62,495	65,418	75,837
Other	9	21,248	76,935	98,183	69,882
Total		24,289	139,430	163,719	145,719
Net gains on investments		-	-	-	-
Net income/(expenditure)	10	23,317	(21,147)	2,170	(32,855)
Transfers between funds		1,485	(1,485)	-	-
Net income/(expenditure) before other gains/(losses)		24,802	(22,632)	2,170	(32,855)
Other gains and losses					
Net movement in funds		24,802	(22,632)	2,170	(32,855)
Reconciliation of funds:					
Total funds brought forward		19,360	56,333	75,693	108,547
Total funds carried forward		44,162	33,701	77,863	75,692

The Community@NE66 Charitable Trust

Balance Sheet

at 31 December 2022

Charity No. 1171202

		2022 £	2021 £
Fixed assets			
Tangible assets	12	6,890	9,454
		<u>6,890</u>	<u>9,454</u>
Current assets			
Debtors	13	955	-
Cash at bank and in hand		70,021	66,240
		<u>70,976</u>	<u>66,240</u>
Creditors: Amount falling due within one year	14	(3)	(1)
Net current assets		<u>70,973</u>	<u>66,239</u>
Total assets less current liabilities		<u>77,863</u>	<u>75,693</u>
Net assets excluding pension asset or liability		<u>77,863</u>	<u>75,693</u>
Total net assets		<u><u>77,863</u></u>	<u><u>75,693</u></u>
The funds of the charity			
Restricted funds	15		
Restricted income funds		33,701	56,333
		<u>33,701</u>	<u>56,333</u>
Unrestricted funds	15		
General funds		44,162	19,360
		<u>44,162</u>	<u>19,360</u>
Reserves	15		
Total funds		<u><u>77,863</u></u>	<u><u>75,693</u></u>

Approved by the trustees on 23 October 2023

And signed on their behalf by:

L.A. Bosanquet

Trustee

23 October 2023

*L A Bosanquet*

## 1 Accounting policies

### Basis of preparation

The financial statements have been prepared in accordance with Statement of Recommended Practice: Accounting and Reporting by Charities preparing their accounts in accordance with the Financial Reporting Standard applicable in the UK and Republic of Ireland (FRS 102) issued on 16 July 2014 and the Financial Reporting Standard applicable in the United Kingdom and Republic of Ireland (FRS 102) and the Charities Act 2011.

### Change in basis of accounting or to previous accounts

There has been no change to the accounting policies (valuation rules and method of accounting) since last year and no changes have been made to accounts for previous years.

### Fund accounting

Unrestricted funds	These are available for use at the discretion of the trustees in furtherance of the general objects of the charity.
Designated funds	These are unrestricted funds earmarked by the trustees for particular purposes.
Revaluation funds	These are unrestricted funds which include a revaluation reserve representing the restatement of investment assets at their market values.
Restricted funds	These are available for use subject to restrictions imposed by the donor or through terms of an appeal.

### Income

Recognition of income	Income is included in the Statement of Financial Activities (SoFA) when the charity becomes entitled to, and virtually certain to receive, the income and the amount of the income can be measured with sufficient reliability.
-----------------------	---

Income with related expenditure	Where income has related expenditure the income and related expenditure is reported gross in the SoFA.
---------------------------------	--

Donations and legacies	Voluntary income received by way of grants, donations and gifts is included in the the SoFA when receivable and only when the Charity has unconditional entitlement to the income.
------------------------	--

Tax reclaims on donations and gifts	Income from tax reclaims is included in the SoFA at the same time as the gift/donation to which it relates.
-------------------------------------	---

Donated services and facilities	These are only included in income (with an equivalent amount in expenditure) where the benefit to the Charity is reasonably quantifiable, measurable and material.
---------------------------------	--

Volunteer help	The value of any volunteer help received is not included in the accounts.
----------------	---

Investment income	This is included in the accounts when receivable.
-------------------	---

Gains/(losses) on revaluation of fixed assets	This includes any gain or loss resulting from revaluing investments to market value at the end of the year.
---	---

Gains/(losses) on investment assets	This includes any gain or loss on the sale of investments.
-------------------------------------	--

#### Expenditure

Recognition of expenditure	Expenditure is recognised on an accruals basis. Expenditure includes any VAT which cannot be fully recovered, and is reported as part of the expenditure to which it relates.
Expenditure on raising funds	These comprise the costs associated with attracting voluntary income, fundraising trading costs and investment management costs.
Expenditure on charitable activities	These comprise the costs incurred by the Charity in the delivery of its activities and services in the furtherance of its objects, including the making of grants and governance costs.
Grants payable	All grant expenditure is accounted for on an actual paid basis plus an accrual for grants that have been approved by the trustees at the end of the year but not yet paid.
Governance costs	These include those costs associated with meeting the constitutional and statutory requirements of the Charity, including any audit/independent examination fees, costs linked to the strategic management of the Charity, together with a share of other administration costs.
Other expenditure	These are support costs not allocated to a particular activity.

#### Taxation

The charity is exempt from tax on its charitable activities.

#### Tangible fixed assets and depreciation

Depreciation is provided at the following annual rates in order to write off each asset over its estimated useful life:

Plant & Machinery	33% Straight Line
Fixtures & Fittings	20% Straight Line

#### Freehold investment property

Investment properties are measured initially at cost and subsequently at fair value at each balance sheet date and are not depreciated. All gains or losses are taken to the Statement of Financial Activities as they arise.

#### Stocks

Stock is included at the lower of cost or net realisable value. Donated items of stock are recognised at fair value which is the amount the charity would have been willing to pay for the items on the open market.

#### Trade and other debtors

Trade and other debtors are recognised at the settlement amount due after any trade discount offered. Prepayments are valued at the amount prepaid net of any trade discounts due.

#### Cash and cash equivalents

Cash and cash equivalents comprise cash at bank and on hand, demand deposits with banks and other short-term highly liquid investments with original maturities of three months or less and bank overdrafts. In the statement of financial position, bank overdrafts are shown within borrowings or current liabilities. In the Statement of Cash Flows, cash and cash equivalents are shown net of bank overdrafts that are repayable on demand and form an integral part of the company's cash management.



#### Trade and other creditors

Short term creditors are measured at the transaction price. Other creditors and provisions are recognised where the charity has a present obligation resulting from a past event that will probably result in the transfer of funds to a third party and the amount due to settle the obligation can be measured or estimated reliably. Creditors and provisions are normally recognised at their settlement amount after allowing for any trade discounts due.

#### Research and development

Expenditure on research and development is written off in the year in which it is incurred.

#### Foreign currencies

Monetary assets and liabilities denominated in currencies other than the functional currency of the charity are translated at the rates of exchange prevailing at the end of the reporting period.

Transactions in currencies other than the functional currency of the charity are recorded at the rate of exchange on the date that the transaction occurred.

All exchange differences are taken into account in arriving at net income/expenditure.

#### Leased assets

Where the charity enters into a lease which entails taking substantially all the risks and rewards of ownership of an asset, the lease is treated as a finance lease.

Leases which do not transfer substantially all the risks and rewards of ownership to charity are classified as operating leases.

Assets held under finance leases are initially recognised as assets of the charity at their fair value at the inception of the lease or, if lower, at the present value of the minimum lease payments. The corresponding liability to the lessor is included in the balance sheet date as a finance lease obligation. Lease payments are apportioned between finance expenses and reduction of the lease obligation so as to achieve a constant rate of interest on the remaining balance of the liability. Finance expenses are recognised immediately, unless they are directly attributable to qualifying assets, in which case they are capitalised in accordance with the charity's policy on borrowing costs.

Assets held under finance leases are depreciated in the same way as owned assets.

Operating lease payments are recognised as an expense on a straight-line basis over the lease term. In the event that lease incentives are received to enter into operating leases, such incentives are recognised as a liability. The aggregate benefit of incentives is recognised as a reduction of rental expense on a straight-line basis.

#### Pension costs

The charity operates a defined contribution plan for its employees. A defined contribution plan is a pension plan under which the charity pays fixed contributions into a separate entity. Once the contributions have been paid the charity has no further payments obligations. The contributions are recognised as expenses when they fall due. Amounts not paid are shown in accruals in the balance sheet. The assets of the plan are held separately from the charity in independently administered funds.

#### Receipt of donated goods, facilities and services

All donated goods, facilities and services received are recognised within incoming resources and expenditure at an estimate of the value to the charity.

2 Statement of Financial Activities - prior year

	Unrestricted funds 2021 £	Restricted funds 2021 £	Total funds 2021 £
Income and endowments from:			
Donations and legacies	4,077	6,867	10,944
Charitable activities	9,368	92,472	101,840
Other trading activities	-	80	80
Total	13,445	99,419	112,864
Expenditure on:			
Charitable activities	4,259	71,578	75,837
Other	7,239	62,643	69,882
Total	11,498	134,221	145,719
Net income	1,947	(34,802)	(32,855)
Transfers between funds	8,386	(8,386)	-
Net income before other gains/(losses)	10,333	(43,188)	(32,855)
Other gains and losses:			
Net movement in funds	10,333	(43,188)	(32,855)
Reconciliation of funds:			
Total funds brought forward	9,029	99,519	108,548
Total funds carried forward	19,362	56,331	75,693

3 Income from donations and legacies

	Unrestricted	Restricted	Total 2022	Total 2021
	£	£	£	£
Donations	15,661	25,000	40,661	10,944
	<u>15,661</u>	<u>25,000</u>	<u>40,661</u>	<u>10,944</u>

4 Income from charitable activities

	Unrestricted	Restricted	Total 2022	Total 2021
	£	£	£	£
Charitable Activities	5,777	93,283	99,060	101,840
	<u>5,777</u>	<u>93,283</u>	<u>99,060</u>	<u>101,840</u>

5 Income from other trading activities

	Unrestricted	Total 2022	Total 2021
	£	£	£
Room Hire	2,757	2,757	80
Activity Income	480	480	-
	<u>3,237</u>	<u>3,237</u>	<u>80</u>

6 Other income

	Unrestricted	Total 2022	Total 2021
	£	£	£
Other income	22,931	22,931	-
	<u>22,931</u>	<u>22,931</u>	<u>-</u>

7 Expenditure on raising funds

	Unrestricted	Total 2022	Total 2021
	£	£	£
<i>Fundraising trading costs</i>			
Room Hire	118	118	-
	<u>118</u>	<u>118</u>	<u>-</u>

8 Expenditure on charitable activities

	Unrestricted	Restricted	Total 2022	Total 2021
	£	£	£	£
<i>Expenditure on charitable activities</i>				
Charitable Activities	2,923	62,495	65,418	75,837
<i>Governance costs</i>				
	<u>2,923</u>	<u>62,495</u>	<u>65,418</u>	<u>75,837</u>

9 Other expenditure

	Unrestricted	Restricted	Total 2022	Total 2021
	£	£	£	£
Employee costs	8,361	62,876	71,237	58,266
Motor and travel costs	447	994	1,441	140
Premises costs	525	13,065	13,590	3,064
Amortisation, depreciation, impairment, profit/loss on disposal of fixed assets	2,564	-	2,564	2,652
General administrative costs	7,322	-	7,322	4,638
Legal and professional costs	2,029	-	2,029	1,122
	<u>21,248</u>	<u>76,935</u>	<u>98,183</u>	<u>69,882</u>

10 Net income/(expenditure) before transfers

	2022	2021
	£	£
This is stated after charging:		
Depreciation of owned fixed assets	2,564	2,652

11 Staff costs

	2022	2021
Salaries and wages	70,377	56,951
Pension costs	615	-
	<u>70,992</u>	<u>56,951</u>

No employee received emoluments in excess of £60,000.

12 Tangible fixed assets

	Plant & Machinery	Fixtures & Fittings	Total
	£	£	£
Cost or revaluation			
At 1 January 2022	5,365	7,432	12,797
At 31 December 2022	<u>5,365</u>	<u>7,432</u>	<u>12,797</u>
Depreciation and impairment			
At 1 January 2022	1,601	1,742	3,343
Depreciation charge for the year	1,080	1,484	2,564
At 31 December 2022	<u>2,681</u>	<u>3,226</u>	<u>5,907</u>
Net book values			
At 31 December 2022	<u>2,684</u>	<u>4,206</u>	<u>6,890</u>
At 31 December 2021	<u>3,764</u>	<u>5,690</u>	<u>9,454</u>

13 Debtors

	2022	2021
	£	£
Other debtors	955	-
	<u>955</u>	<u>-</u>

14 Creditors:

amounts falling due within one year

	2022	2021
	£	£
Accruals	3	1
	<u>3</u>	<u>1</u>

## 15 Movement in funds

	At 1 January 2022	Incoming resources (including other gains/losses) £	Resources expended £	Gross transfers £	At 31 December 2022 £
Restricted funds:					
Restricted income funds:					
Children in Need	21,942	41,278	(44,432)	(3,091)	15,697
Northumberland Childrens Trust	1,685	-	(1,685)	-	-
Sir James Knott Fund	8,737	-	(7,430)	(95)	1,212
National Lottery	3,860	-	(3,860)	-	-
Community Chest	3,120	-	(1,808)	-	1,312
Northumberland Estates	1,449	-	(839)	-	610
Community Foundation	10,392	-	(10,392)	-	-
Other Restricted Funds	5,148	-	(5,148)	-	-
Mulchany Scmitt	-	16,000	(16,000)	-	-
Garfield & Western	-	20,000	(17,516)	-	2,484
William Leech	-	4,500	(1,360)	-	3,140
K Andrews	-	9,000	(7,000)	(2,000)	-
NCC/HAF	-	12,075	(15,975)	3,900	-
Magic Little Grants	-	500	(500)	-	-
Neighbourly/Sainsbury	-	1,630	(584)	(199)	847
Joicey Trust	-	3,300	(3,300)	-	-
Ballinger Trust	-	10,000	(1,601)	-	8,399
Other Restricted Funds	5,148	-	(5,148)	-	-
<i>Total</i>	<u>56,333</u>	<u>118,283</u>	<u>(139,430)</u>	<u>(1,485)</u>	<u>33,701</u>
Unrestricted funds:					
General funds	19,360	47,606	(24,289)	1,485	44,162
<b>Total funds</b>	<u><u>75,693</u></u>	<u><u>165,889</u></u>	<u><u>(163,719)</u></u>	<u><u>-</u></u>	<u><u>77,863</u></u>

## Purposes and restrictions in relation to the funds:

## Restricted funds:

Children in Need	Supports the development our our Universal Youth Work offer to young people aged 9-19 yr olds
Northumberland Childrens Trust	Free long term therapy and counselling for children, young people and families
Sir James Knott Fund	The development of our 0-8 year olds provision enabling us to promote mindfulness through play in early years.
National Lottery	The development of our 0-8 year olds provision enabling us to promote mindfulness through play in early years.
Community Chest	To equip the cafe & kitchen for our food projects

Northumberland Estates	Capital expenditure for us to adapt our founded youth cafe furniture and large white goods for our Youth Cafe
Community Foundation	
Other Restricted Funds	

## 16 Analysis of net assets between funds

	Unrestricted funds	Total
	£	£
Fixed assets	6,890	6,890
Net current assets	70,973	70,973
	<u>77,863</u>	<u>77,863</u>

## 17 Reconciliation of net debt

	At 1 January 2022	Cash flows	At 31 December 2022
	£	£	£
Cash and cash equivalents	66,240	3,781	70,021
	<u>66,240</u>	<u>3,781</u>	<u>70,021</u>
Net debt	<u>66,240</u>	<u>3,781</u>	<u>70,021</u>

## 18 Commitments

*Operating lease commitments*

Annual commitments under non-cancellable operating leases are as follows:

	2022	2022	2021	2021
	Land and buildings	Other	Land and buildings	Other
	£	£	£	£

Operating leases with expiry date:

*Pension commitments*

	2022	2021
	£	£
The pension cost charge to the charity amounted to:	<u>615</u>	<u>-</u>

The Community@NE66 Charitable Trust  
Detailed Statement of Financial Activities  
for the year ended 31 December 2022

	Unrestricted funds 2022 £	Restricted funds 2022 £	Total funds 2022 £	Total funds 2021 £
Income and endowments from:				
Donations and legacies				
Donations	15,661	25,000	40,661	10,944
	<u>15,661</u>	<u>25,000</u>	<u>40,661</u>	<u>10,944</u>
Charitable activities				
Charitable Activities	5,777	93,283	99,060	101,840
	<u>5,777</u>	<u>93,283</u>	<u>99,060</u>	<u>101,840</u>
Other trading activities				
Room Hire	2,757	-	2,757	80
Activity Income	480	-	480	-
	<u>3,237</u>	<u>-</u>	<u>3,237</u>	<u>80</u>
Other				
Other income	22,931	-	22,931	-
	<u>22,931</u>	<u>-</u>	<u>22,931</u>	<u>-</u>
Total income and endowments	47,606	118,283	165,889	112,864
Expenditure on:				
Costs of other trading activities				
Room Hire	118	-	118	-
	<u>118</u>	<u>-</u>	<u>118</u>	<u>-</u>
Total of expenditure on raising funds	118	-	118	-
Charitable activities				
Charitable Activities	2,923	62,495	65,418	75,837
	<u>2,923</u>	<u>62,495</u>	<u>65,418</u>	<u>75,837</u>
Total of expenditure on charitable activities	2,923	62,495	65,418	75,837
Employee costs				
Salaries/wages	7,988	62,389	70,377	56,951
Pension costs	128	487	615	-
Staff training	245	-	245	1,315
	<u>8,361</u>	<u>62,876</u>	<u>71,237</u>	<u>58,266</u>
Motor and travel costs				
Travel and subsistence	332	994	1,326	-
Business mileage costs reimbursed	115	-	115	140
	<u>447</u>	<u>994</u>	<u>1,441</u>	<u>140</u>
Premises costs				
Light, heat and power	-	11,705	11,705	2,985
Premises cleaning	525	1,360	1,885	-



The Community@NE66 Charitable Trust  
Detailed Statement of Financial Activities

Premises repairs and maintenance	-	-	-	79
	<u>525</u>	<u>13,065</u>	<u>13,590</u>	<u>3,064</u>
General administrative costs, including depreciation and amortisation				
Depreciation of Plant & Machinery	2,564	-	2,564	2,652
Depreciation of Fixtures & Fittings	-	-	-	-
General insurances	1,717	-	1,717	1,106
Software, IT support and related costs	1,168	-	1,168	1,733
Subscriptions	4,314	-	4,314	372
Sundry expenses	-	-	-	811
Telephone, fax and broadband	123	-	123	616
	<u>9,886</u>	<u>-</u>	<u>9,886</u>	<u>7,290</u>
Legal and professional costs				
Audit/Independent examination fees	850	-	850	850
Accountancy and bookkeeping	629	-	629	272
Solicitor's fees	550	-	550	-
	<u>2,029</u>	<u>-</u>	<u>2,029</u>	<u>1,122</u>
Total of expenditure of other costs	<u>21,248</u>	<u>76,935</u>	<u>98,183</u>	<u>69,882</u>
Total expenditure	<u>24,289</u>	<u>139,430</u>	<u>163,719</u>	<u>145,719</u>
Net gains on investments	-	-	-	-
Net income/(expenditure)	<u>23,317</u>	<u>(21,147)</u>	<u>2,170</u>	<u>(32,855)</u>
Transfers between funds	1,485	(1,485)	-	-
Net income/(expenditure) before other gains/(losses)	<u>24,802</u>	<u>(22,632)</u>	<u>2,170</u>	<u>(32,855)</u>
Other Gains	-	-	-	-
Net movement in funds	<u>24,802</u>	<u>(22,632)</u>	<u>2,170</u>	<u>(32,855)</u>
Reconciliation of funds:				
Total funds brought forward	<u>19,360</u>	<u>56,333</u>	<u>75,693</u>	<u>108,547</u>
Total funds carried forward	<u>44,162</u>	<u>33,701</u>	<u>77,863</u>	<u>75,692</u>