



Grab your Gear!

Ready to embark on life's journey

2026

2025

2024

Annual Report and Accounts 2023-2024

Trustee Statement:

At The Community Hub (TCH), we have embarked on a transformative and empowering journey, carving out pathways of hope, resilience, and courage. As we navigated through trials laced with challenges and setbacks, where women confronted moments of adversity, our mission remains unwavering - to pave the way for women, clearing hurdles and revealing journeys overflowing with potential and opportunities. Our charity is committed to empowering disadvantaged women and girls along their personal journeys. With each twist and turn, we tackle their unique obstacles head-on, equipping them with the necessary tools and support to navigate their unique paths.

Amidst the current cost-of-living crisis, our outreach has expanded significantly, now reaching 350 individuals as more women find themselves in urgent need. From aiding in employment opportunities to providing sustenance for their families and stabilising financial situations, we offer a range of specialised programs to alleviate burdens both financially and emotionally during these trying times.

At TCH, we believe in empowering women to embark on their own unique journeys, rejecting the idea of being constrained by pre-determined routes. We guide our women, helping them repave their paths and introducing exciting destinations rich with promise and optimism. Whether it's through skill-building programs, emotional support services, or access to essential resources, we strive to empower each individual with everything they need to embark on their personal path with confidence and resilience. As we unveil our annual report, "Grab you Gear! Ready to Embark on Life's Journey," we invite you to witness the impactful strides we are making.

Your continued investment and support are deeply valued.



Mr Aron Klein



Mission:

The Community Hub's mission is to engage, empower, and equip marginalised women and girls to realise their aspirations, improve access, and create opportunities. We are dedicated to recognising and addressing the diverse challenges these women face throughout different stages of their lives. By providing access to essential programs, skills, and support, we aim to help them reach their full potential and overcome the hurdles they encounter. This dedication ensures that every woman has the chance to shine, rise above her circumstances, and build a future she can be proud of.

Our devotion is unwavering as we endeavour to be a steadfast support system for the vulnerable women in our community. We want them to know [without a shadow of a doubt] that we stand by them at all times. In TCH's books, commitment isn't just a word; it's a promise to be the rock-solid support our women can always rely on.



Vision:

We envision a thriving community where no one is left behind, and even the most vulnerable have equal opportunities for growth, success, and fulfilment. Vulnerabilities should not be barriers but springboards to success. We aim to create a space where women of all ages feel supported and heard, knowing that no matter how tough it gets, they are never alone. At The Community Hub, we strive for a community where every woman can confidently say, "I am valued, I am capable, and I have had the opportunity to thrive and succeed."

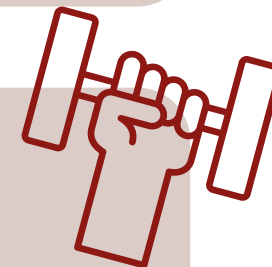




Previous and Progressing projects:

At TCH, we take pride in our diverse range of life-changing initiatives designed to improve the lives of our beneficiaries. For us, each project is more than just a project; it's a transformative journey, carefully crafted, refined, and continuously evaluated to ensure it meets the unique needs and desires of the women we support. We invite you to explore our work and achievements [though no words can capture their full impact] Ready to embark?

Just Dance



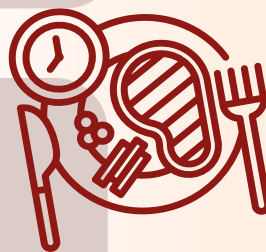
Just Dance engages 60 inactive and vulnerable women aged 19-25 in upbeat dance sessions. Led by qualified instructors and supported by trained volunteers, the sessions aim to help participants express themselves, build skills, boost self-esteem, and become more proactive. The structured program includes various dance activities focused on movement, coordination, and creative expression. Through dance, participants not only improve physical fitness but also develop valuable life skills, gain emotional release, and enhance self-awareness and appreciation of themselves and others.

Creative Careers



With our Creative Careers initiative, we assist young women and girls aged 19-25, with reduced intellectual abilities, through creative course trainings, helping them acquire successful careers, suitable to their unique capabilities. Completion of these courses leads to AQA accreditation, fostering creativity and opening doors to diverse career opportunities. Participants report increased confidence, skill acquisition, and a pathway to fulfilling careers. After the project concludes, our team of dedicated volunteer youth workers offer personalised, one-on-one career guidance, assisting users in pursuing

Food for Thought



Food for Thought addresses the needs of poverty-stricken mothers with young children. Once a week, they gather in our community kitchen to cook and learn basic culinary skills and food budgeting. This initiative not only provides practical skills, but also fosters a sense of community. Outcomes include improved nutrition for families, enhanced cooking abilities, and increased awareness of budget-friendly meal planning.





Peers in Parenting

In our commitment to aiding vulnerable women and their families, within the community, one of our standouts and effective initiatives is the “Peers in Parenting” program. This project delivers tailored parenting classes, specifically designed for mothers facing the added challenges of raising children with special educational needs. In addition to the classes, the project offers delightful stay-and-play sessions, providing a secure and enjoyable space for mothers to connect with their children.

WellBoost

Our WellBoost! initiative, supports socially isolated elderly women aged 55+ through varied weekly social sessions to combat their loneliness and improve their overall quality of life. Outcomes include improved physical health through keep-fit classes, enhanced mental well-being through social connections, and an overall sense of purpose.



Financial Smarties

Financial Smarties stands as a pillar of support amidst the cost-of-living crisis, empowering women and girls, aged 19+, with AQA-accredited programs in financial literacy and economic security. Our bi-weekly sessions, offer interactive workshops, training in financial and budgeting skills, and dynamic seminars led by finance professionals. Through this initiative, participants experience increased financial literacy and enhanced economic security, instilling in our young women hope for a promising, prosperous future.

Beneficiaries Share

Their Journeys to Success

Millie shares:

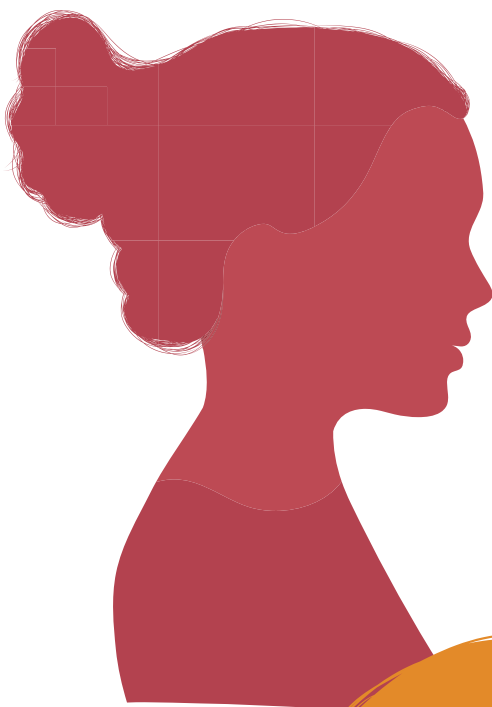
The Food for Thought project has been a blessing for me and my children. Not only have we enjoyed delicious and nutritious meals, but I have also gained valuable cooking skills and budgeting tips that will help me provide for my family long after the project ends. This support has truly made a positive difference in our lives.'

Debbie shares:

'Participating in TCH's WellBoost program has brought about a remarkable transformation in all aspects of my life. From forming valuable friendships to enhancing my fitness awareness and adopting a healthier lifestyle, I feel completely rejuvenated! I now feel youthful and revitalised, and my family appreciates my newfound energy, turning what used to be stress into joy.'

Rachel shares:

'Being part of Creative Careers has been amazing! What I loved most was that I had a say in everything, from suggesting ideas to shaping the activities. The creative courses were not just about learning - they gave me a recognised accreditation and boosted my confidence. Now, thanks to this project, I feel ready to chase my dream career in the creative industry. A big shoutout to the team for letting me be a part of the journey and opening doors to exciting opportunities!'



Our Journey Milestones:

Quantifying Our Impact

60

women into dance
classes

44

young women/girls
joined goal games

180

women achieved an AQA
accreditation

30

new beneficiaries

120

women are confident
in personal Financial
Management

5,344

nourishing meals
prepared

40

parents enrolled in
parenting classes.

644

sessions held

63

women moved into
employment



beneficiaries

An illustration featuring a large, solid orange circle in the center. Surrounding this circle are numerous hands of various skin tones (light, medium, and dark brown) reaching in from all directions, as if holding or supporting the circle. Some hands are wearing accessories like bracelets, bangles, and watches. The background is a light, neutral color.

Thank you:

A heartfelt thank you to all our supporters for accompanying us on our transformational journeys. Your generosity has propelled us forward, unlocking new pathways filled with hope and empowerment. Together, we are forging a path towards a brighter and sustainable future.

Anton Jurgens Charitable Trust
Beacon Lodge Charitable Trust
Calisen Impact Charitable Trust
Hackney Giving
Hackney Parochial
Investec

London Community Foundation
National Lottery Community Fund/DCMS
Postcode Society Trust
Santa Barbara Heights Charitable Trust
UK Youth

and to all remaining donors and supporters, your
generosity is truly appreciated.

The Community Hub

Report of the Trustees
for the Year Ended 30 September 2024

FINANCIAL REVIEW

Principal funding sources

The charity's activities are supported by a mixture of funding streams including private donations, grants from trusts and users' contributions. The results for the period are shown in the attached financial statements.

Reserves policy

The trustees are working towards building reserves of at least 3 months' operating costs in order to protect services where there are uncertainties as to whether funding will continue and to ensure adequate cash flow for the organisation's needs.

FUTURE PLANS

The charity's aims and targets for the coming year are to continue expanding on its current services and programs.

STRUCTURE, GOVERNANCE AND MANAGEMENT

Governing document

The charity is controlled by its governing document, a deed of trust and constitutes an unincorporated charity.

Charity constitution

The Community Hub is a registered charity and a charitable incorporated organisation. The Trustees are responsible for governance of the organisation. Induction and training are provided for new trustees. None of the trustees have any beneficial interest in the charity.

STRUCTURE, GOVERNANCE AND MANAGEMENT

Risk management

The trustees have identified and reviewed the major risks to which the charity is exposed. Both manual and automated checks are regularly invoked, particularly those relating to the operations and finance of the charity. The trustees are satisfied that these systems and procedures mitigate any perceived risks.

The trustees continually review the risks that the charity may be exposed to and take appropriate action as required

REFERENCE AND ADMINISTRATIVE DETAILS

Registered Charity number

1171165

Principal address

122 Kyverdale Road
London
N16 6PR

Trustees

Mr A Klein
Mrs M Davidovitz
Mrs R Ehrnfeld
Mrs S Silbiger
Mrs R Heller

Independent Examiner

Mr A Heller FCA
Martin+Heller
5 North End Road
London
NW11 7RJ

Approved by order of the board of trustees on and signed on its behalf by:



Mr A Klein - Trustee

The Community Hub

Independent Examiner's Report to the Trustees

Independent examiner's report to the trustees of The Community Hub

I report to the charity trustees on my examination of the accounts of The Community Hub (the Trust) for the year ended 30 September 2024.

Responsibilities and basis of report

As the charity trustees of the Trust you are responsible for the preparation of the accounts in accordance with the requirements of the Charities Act 2011 ('the Act').

I report in respect of my examination of the Trust's accounts carried out under Section 145 of the Act and in carrying out my examination I have followed all applicable Directions given by the Charity Commission under Section 145(5) (b) of the Act.

Independent examiner's statement

I have completed my examination. I confirm that no material matters have come to my attention in connection with the examination giving me cause to believe that in any material respect:

1. accounting records were not kept in respect of the Trust as required by Section 130 of the Act; or
2. the accounts do not accord with those records; or
3. the accounts do not comply with the applicable requirements concerning the form and content of accounts set out

in the Charities (Accounts and Reports) Regulations 2008 other than any requirement that the accounts give a true and fair view which is not a matter considered as part of an independent examination.

I have no concerns and have come across no other matters in connection with the examination to which attention should

be drawn in this report in order to enable a proper understanding of the accounts to be reached.

Mr A Heller FCA
Martin+Heller
5 North End Road
London
NW11 7RJ

Date: 29/7/2025

The Community Hub

Statement of Financial Activities for the Year Ended 30 September 2024

	Notes	Unrestricted fund £	Restricted fund £	30.9.24 Total funds £	30.9.23 Total funds £
INCOME AND ENDOWMENTS FROM					
Donations and legacies		52,501	108,957	161,458	112,573
EXPENDITURE ON	2				
Raising funds		995	-	995	3,963
Charitable activities					
Charitable activities		40,660	104,955	145,615	99,840
Other		360	3,717	4,077	4,152
Total		42,015	108,672	150,687	107,955
NET INCOME		10,486	285	10,771	4,618
RECONCILIATION OF FUNDS					
Total funds brought forward		42,651	2,132	44,783	40,165
TOTAL FUNDS CARRIED FORWARD		53,137	2,417	55,554	44,783

The Community Hub

Balance Sheet 30 September 2024

	Notes	Unrestricted fund £	Restricted fund £	30.9.24 Total funds £	30.9.23 Total funds £
FIXED ASSETS					
Tangible assets	5	-	3,267	3,267	3,434
CURRENT ASSETS					
Debtors	6	42,127	-	42,127	36,560
Cash at bank		21,055	9,954	31,009	33,915
		63,182	9,954	73,136	70,475
CREDITORS					
Amounts falling due within one year	7	(10,045)	(10,804)	(20,849)	(29,126)
NET CURRENT ASSETS		53,137	(850)	52,287	41,349
TOTAL ASSETS LESS CURRENT					
LIABILITIES		53,137	2,417	55,554	44,783
NET ASSETS		53,137	2,417	55,554	44,783
FUNDS					
Unrestricted funds	8			53,137	42,651
Restricted funds				2,417	2,132
TOTAL FUNDS				55,554	44,783

The financial statements were approved by the Board of Trustees and authorised for issue on 29/07/25 and were signed on its behalf by:



Mr A Klein - Trustee

The Community Hub

Notes to the Financial Statements for the Year Ended 30 September 2024

1. ACCOUNTING POLICIES

Basis of preparing the financial statements

The financial statements of the charity, which is a public benefit entity under FRS 102, have been prepared in accordance with the Charities SORP (FRS 102) 'Accounting and Reporting by Charities: Statement of Recommended Practice applicable to charities preparing their accounts in accordance with the Financial Reporting Standard applicable in the UK and Republic of Ireland (FRS 102) (effective 1 January 2019)', Financial Reporting Standard 102 'The Financial Reporting Standard applicable in the UK and Republic of Ireland' and the Charities Act 2011. The financial statements have been prepared under the historical cost convention.

Income

All income is recognised in the Statement of Financial Activities once the charity has entitlement to the funds, it is probable that the income will be received and the amount can be measured reliably.

Expenditure

Liabilities are recognised as expenditure as soon as there is a legal or constructive obligation committing the charity to that expenditure, it is probable that a transfer of economic benefits will be required in settlement and the amount of the obligation can be measured reliably. Expenditure is accounted for on an accruals basis and has been classified under headings that aggregate all cost related to the category. Where costs cannot be directly attributed to particular headings they have been allocated to activities on a basis consistent with the use of resources.

Tangible fixed assets

Depreciation is provided at the following annual rates in order to write off each asset over its estimated useful life.

Computer equipment - straight line over 3 years

Taxation

The charity is exempt from tax on its charitable activities.

Fund accounting

Unrestricted funds can be used in accordance with the charitable objectives at the discretion of the trustees.

Restricted funds can only be used for particular restricted purposes within the objects of the charity. Restrictions arise when specified by the donor or when funds are raised for particular restricted purposes.

Further explanation of the nature and purpose of each fund is included in the notes to the financial statements.

The Community Hub

Notes to the Financial Statements for the Year Ended 30 September 2024

2. RAISING FUNDS

Raising donations and legacies	30.9.24 £	30.9.23 £
Fund raising	90	3,785
Support costs	905	178
	995	3,963

3. TRUSTEES' REMUNERATION AND BENEFITS

There were no trustees' remuneration or other benefits for the year ended 30 September 2024 nor for the year ended 30 September 2023.

Trustees' expenses

There were no trustees' expenses paid for the year ended 30 September 2024 nor for the year ended 30 September 2023.

4 COMPARATIVES FOR THE STATEMENT OF FINANCIAL ACTIVITIES

INCOME AND ENDOWMENTS FROM

	Unrestricted fund £	Restricted fund £	Total funds £
Donations and legacies	41,013	71,560	112,573

EXPENDITURE ON

Raising funds	3,963	-	3,963
---------------	-------	---	-------

Charitable activities

Charitable activities	13,260	86,580	99,840
-----------------------	--------	--------	--------

Other	367	3,785	4,152
-------	-----	-------	-------

Total	17,590	90,365	107,955
--------------	---------------	---------------	----------------

NET INCOME/(EXPENDITURE)	23,423	(18,805)	4,618
--------------------------	--------	----------	-------

RECONCILIATION OF FUNDS

Total funds brought forward	19,228	20,937	40,165
-----------------------------	--------	--------	--------

TOTAL FUNDS CARRIED FORWARD

42,651	2,132	44,783
--------	-------	--------

The Community Hub

Notes to the Financial Statements for the Year Ended 30 September 2024

5. TANGIBLE FIXED ASSETS

	Computer equipment £
COST	
At 1 October 2023	11,356
Additions	3,550
At 30 September 2024	14,906
DEPRECIATION	
At 1 October 2023	7,922
Charge for year	3,717
At 30 September 2024	11,639
NET BOOK VALUE	
At 30 September 2024	3,267
At 30 September 2023	3,434

6. DEBTORS: AMOUNTS FALLING DUE WITHIN ONE YEAR

	30.9.24	30.9.23
Other debtors	£ 42,127	£ 36,560

7. CREDITORS: AMOUNTS FALLING DUE WITHIN ONE YEAR

	30.9.24	30.9.23
Trade creditors	£ 10,804	£ 18,861
Other creditors	10,045	10,265
	20,849	29,126

8. MOVEMENT IN FUNDS

	At 1/10/23 £	Net movement in funds £	At 30/9/24 £
Unrestricted funds			
General fund	42,651	10,486	53,137
Restricted funds			
Restricted fund	2,132	285	2,417
TOTAL FUNDS	44,783	10,771	55,554

Net movement in funds, included in the above are as follows:

	Incoming resources £	Resources expended £	Movement in funds £
Unrestricted funds			
General fund	52,501	(42,015)	10,486
Restricted funds			
Restricted fund	108,957	(108,672)	285
TOTAL FUNDS	161,458	(150,687)	10,771

The Community Hub

Notes to the Financial Statements for the Year Ended 30 September 2024

Comparatives for movement in funds

	At 1/10/22 £	Net movement in funds £	At 30/9/23 £
Unrestricted funds	19,228	23,423	42,651
General fund			
Restricted funds	20,937	(18,805)	2,132
Restricted fund			
TOTAL FUNDS	40,165	4,618	44,783

Comparative net movement in funds, included in the above are as follows:

	Incoming sources £	Resources expended £	Movement in funds £
Unrestricted funds	41,013	(17,590)	23,423
General fund			
Restricted funds	71,560	(90,365)	(18,805)
Restricted fund			
TOTAL FUNDS	112,573	(107,955)	4,618

A current year 12 months and prior year 12 months combined position is as follows:

	At 1/10/22 £	Net movement in funds £	At 30/9/24 £
Unrestricted funds	19,228	33,909	53,137
General fund			
Restricted funds	20,937	(18,520)	2,417
Restricted fund			
TOTAL FUNDS	40,165	15,389	55,554

A current year 12 months and prior year 12 months combined net movement in funds, included in the above are as follows:

	Incoming resources £	Resources expended £	Movement in funds £
Unrestricted funds	93,514	(59,605)	33,909
General fund			
Restricted funds	180,517	(199,037)	(18,520)
Restricted fund			
TOTAL FUNDS	274,031	(258,642)	15,389

9. RELATED PARTY DISCLOSURES

Amounts owing from charities with trustees in common with The Community Hub as at the balance sheet date totalled £200 (2023: £200).

The Community Hub

Detailed Statement of Financial Activities for the Year Ended 30 September 2024

	30.9.24	30.9.23
	£	£
INCOME AND ENDOWMENTS		
Donations and legacies		
Donations	161,458	112,573
Total incoming resources	161,458	112,573
EXPENDITURE		
Raising donations and legacies		
Fund raising	90	3,785
Charitable activities		
Training and events	32,208	19,660
Activities costs	26,478	34,214
Rent	33,997	17,849
Meals	28,078	4,896
Staff costs	24,854	23,221
	145,615	99,840
Support costs		
Finance		
Bank charges	-	7
Legal and professional fees	905	178
	905	185
Other		
Computer equipment	3,717	3,785
Governance costs		
Accountancy fees	360	360
Total resources expended	150,687	107,955
Net income	10,771	4,618