

THE COMMUNITY HUB

England & Wales · Charity number 1171165

Details

Status Registered

Legal form CIO

Registered 2017-01-18

Register [View on the Charity Commission register](#)

Contact

Address 1 Belz Terrace
London
E5 9SN

Phone 02037450660

Email hub@tchlondon.com

Activities

Objects: THE ADVANCEMENT OF EDUCATION FOR THE PUBLIC BENEFIT BY:PROVIDING A RANGE OF TRAINING, ADVICE AND RELATIONSHIP BUILDING SERVICES AND OPPORTUNITIES FOR VULNERABLE PEOPLE. THE CONTINUED DEVELOPMENT OF THE CAPABILITIES, SKILLS AND UNDERSTANDING IN SUBJECTS OF EDUCATIONAL VALUE OF DEPRIVED YOUNG ADULTS. THE RELIEF OF POVERTY AMONGST PERSONS IN CONDITIONS OF NEED, HARDSHIP, AND DISTRESS. TO ASSIST VULNERABLE PEOPLE THROUGH PROVIDING SOCIAL WELFARE SUPPORT, DESIGNED TO IMPROVE THEIR CONDITIONS OF LIFE.THE PROMOTION OF ANY OTHER EXCLUSIVELY CHARITABLE OBJECTS AND PURPOSES SUCH AS THE TRUSTEES SEE FIT, PROVIDED THAT THEY ARE REGARDED AS CHARITABLE BY THE LAW OF ENGLAND AND WALES.?

Activities: The Charity promotes personal development & skills by providing leisure time recreational & other activities, such as social activities, educational workshops, sport & skill based sessions, designed to improve the lives of vulnerable & disadvantaged people, giving them vastly improved future life prospects. EVERYONE deserves the opportunity to achieve confidence, resilience & independence.

Classification

- **How:** Provides Services, Other Charitable Activities
- **What:** General Charitable Purposes, Education/training, Recreation, Other Charitable Purposes
- **Who:** Children/young People, Elderly/old People

Geography

- Hackney
- Haringey

Finances

Period end	Income	Expenditure	Assets	Employees
2024-09-30	£161,458	£150,687	-	-
2023-09-30	£112,573	£107,955	-	-
2022-09-30	£98,425	£79,301	-	-
2021-09-30	£100,239	£109,086	-	-
2020-09-30	£66,577	£36,889	-	-

Trustees

Name	Role	Appointed
MALKY DAVIDOVITZ		2017-01-18
Ricky Heller		2021-10-12
Rivka Ehrnfeld		2021-10-12
Sarah Silbiger		2021-10-12

THE COMMUNITY HUB

England & Wales - Charity number 1171165

Accounts



Grab your Gear!

Ready to embark on life's journey

2026
2025
2024

Annual Report and Accounts 2023-2024

Trustee Statement:

At The Community Hub (TCH), we have embarked on a transformative and empowering journey, carving out pathways of hope, resilience, and courage. As we navigated through trials laced with challenges and setbacks, where women confronted moments of adversity, our mission remains unwavering - to pave the way for women, clearing hurdles and revealing journeys overflowing with potential and opportunities. Our charity is committed to empowering disadvantaged women and girls along their personal journeys. With each twist and turn, we tackle their unique obstacles head-on, equipping them with the necessary tools and support to navigate their unique paths.

Amidst the current cost-of-living crisis, our outreach has expanded significantly, now reaching 350 individuals as more women find themselves in urgent need. From aiding in employment opportunities to providing sustenance for their families and stabilising financial situations, we offer a range of specialised programs to alleviate burdens both financially and emotionally during these trying times.

At TCH, we believe in empowering women to embark on their own unique journeys, rejecting the idea of being constrained by pre-determined routes. We guide our women, helping them repave their paths and introducing exciting destinations rich with promise and optimism. Whether it's through skill-building programs, emotional support services, or access to essential resources, we strive to empower each individual with everything they need to embark on their personal path with confidence and resilience. As we unveil our annual report, "Grab you Gear! Ready to Embark on Life's Journey," we invite you to witness the impactful strides we are making.

Your continued investment and support are deeply valued.



Mr Aron Klein



Mission:

The Community Hub's mission is to engage, empower, and equip marginalised women and girls to realise their aspirations, improve access, and create opportunities. We are dedicated to recognising and addressing the diverse challenges these women face throughout different stages of their lives. By providing access to essential programs, skills, and support, we aim to help them reach their full potential and overcome the hurdles they encounter. This dedication ensures that every woman has the chance to shine, rise above her circumstances, and build a future she can be proud of.

Our devotion is unwavering as we endeavour to be a steadfast support system for the vulnerable women in our community. We want them to know [without a shadow of a doubt] that we stand by them at all times. In TCH's books, commitment isn't just a word; it's a promise to be the rock-solid support our women can always rely on.



Vision:

We envision a thriving community where no one is left behind, and even the most vulnerable have equal opportunities for growth, success, and fulfilment. Vulnerabilities should not be barriers but springboards to success. We aim to create a space where women of all ages feel supported and heard, knowing that no matter how tough it gets, they are never alone. At The Community Hub, we strive for a community where every woman can confidently say, "I am valued, I am capable, and I have had the opportunity to thrive and succeed."





Previous and Progressing projects:

At TCH, we take pride in our diverse range of life-changing initiatives designed to improve the lives of our beneficiaries. For us, each project is more than just a project; it's a transformative journey, carefully crafted, refined, and continuously evaluated to ensure it meets the unique needs and desires of the women we support. We invite you to explore our work and achievements [though no words can capture their full impact] Ready to embark?



Just Dance

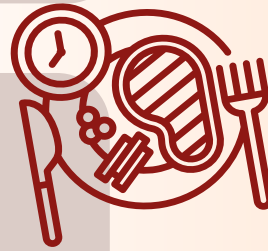
Just Dance engages 60 inactive and vulnerable women aged 19-25 in upbeat dance sessions. Led by qualified instructors and supported by trained volunteers, the sessions aim to help participants express themselves, build skills, boost self-esteem, and become more proactive. The structured program includes various dance activities focused on movement, coordination, and creative expression. Through dance, participants not only improve physical fitness but also develop valuable life skills, gain emotional release, and enhance self-awareness and appreciation of themselves and others.

Creative Careers



With our Creative Careers initiative, we assist young women and girls aged 19-25, with reduced intellectual abilities, through creative course trainings, helping them acquire successful careers, suitable to their unique capabilities. Completion of these courses leads to AQA accreditation, fostering creativity and opening doors to diverse career opportunities. Participants report increased confidence, skill acquisition, and a pathway to fulfilling careers. After the project concludes, our team of dedicated volunteer youth workers offer personalised, one-on-one career guidance, assisting users in pursuing

Food for Thought



Food for Thought addresses the needs of poverty-stricken mothers with young children. Once a week, they gather in our community kitchen to cook and learn basic culinary skills and food budgeting. This initiative not only provides practical skills, but also fosters a sense of community. Outcomes include improved nutrition for families, enhanced cooking abilities, and increased awareness of budget-friendly meal planning.





Peers in Parenting

In our commitment to aiding vulnerable women and their families, within the community, one of our standouts and effective initiatives is the “Peers in Parenting” program. This project delivers tailored parenting classes, specifically designed for mothers facing the added challenges of raising children with special educational needs. In addition to the classes, the project offers delightful stay-and-play sessions, providing a secure and enjoyable space for mothers to connect with their children.

WellBoost

Our WellBoost! initiative, supports socially isolated elderly women aged 55+ through varied weekly social sessions to combat their loneliness and improve their overall quality of life. Outcomes include improved physical health through keep-fit classes, enhanced mental well-being through social connections, and an overall sense of purpose.



Financial Smarties

Financial Smarties stands as a pillar of support amidst the cost-of-living crisis, empowering women and girls, aged 19+, with AQA-accredited programs in financial literacy and economic security. Our bi-weekly sessions, offer interactive workshops, training in financial and budgeting skills, and dynamic seminars led by finance professionals. Through this initiative, participants experience increased financial literacy and enhanced economic security, instilling in our young women hope for a promising, prosperous future.



Beneficiaries Share

Their Journeys to Success

Millie shares:

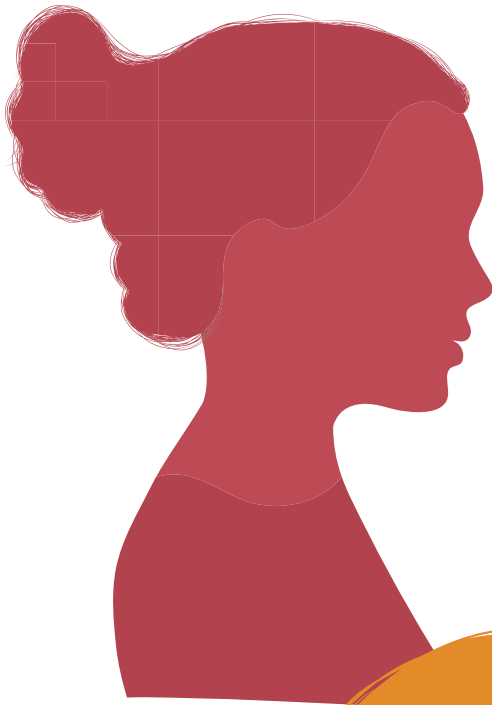
The Food for Thought project has been a blessing for me and my children. Not only have we enjoyed delicious and nutritious meals, but I have also gained valuable cooking skills and budgeting tips that will help me provide for my family long after the project ends. This support has truly made a positive difference in our lives.'

Debbie shares:

'Participating in TCH's WellBoost program has brought about a remarkable transformation in all aspects of my life. From forming valuable friendships to enhancing my fitness awareness and adopting a healthier lifestyle, I feel completely rejuvenated! I now feel youthful and revitalised, and my family appreciates my newfound energy, turning what used to be stress into joy.'

Rachel shares:

'Being part of Creative Careers has been amazing! What I loved most was that I had a say in everything, from suggesting ideas to shaping the activities. The creative courses were not just about learning - they gave me a recognised accreditation and boosted my confidence. Now, thanks to this project, I feel ready to chase my dream career in the creative industry. A big shoutout to the team for letting me be a part of the journey and opening doors to exciting opportunities!'



Our Journey Milestones: Quantifying Our Impact

60

women into dance classes

44

young women/girls joined goal games

180

women achieved an AQA accreditation

30

new beneficiaries

120

women are confident in personal Financial Management

5,344

nourishing meals prepared

40

parents enrolled in parenting classes.

644

sessions held

63

women moved into employment



beneficiaries

A central illustration featuring a large, solid orange circle. Surrounding this circle are numerous hands of various skin tones, reaching in from all directions as if holding or supporting the circle. The hands are wearing different colored sleeves and accessories like bracelets and watches, emphasizing diversity and community. The background is a light, neutral color.

Thank you:

A heartfelt thank you to all our supporters for accompanying us on our transformational journeys. Your generosity has propelled us forward, unlocking new pathways filled with hope and empowerment. Together, we are forging a path towards a brighter and sustainable future.

Anton Jurgens Charitable Trust
Beacon Lodge Charitable Trust
Calisen Impact Charitable Trust
Hackney Giving
Hackney Parochial
Investec

London Community Foundation
National Lottery Community Fund/DCMS
Postcode Society Trust
Santa Barbara Heights Charitable Trust
UK Youth

and to all remaining donors and supporters, your generosity is truly appreciated.

The Community Hub

Report of the Trustees
for the Year Ended 30 September 2024

FINANCIAL REVIEW

Principal funding sources

The charity's activities are supported by a mixture of funding streams including private donations, grants from trusts and users' contributions. The results for the period are shown in the attached financial statements.

Reserves policy

The trustees are working towards building reserves of at least 3 months' operating costs in order to protect services where there are uncertainties as to whether funding will continue and to ensure adequate cash flow for the organisation's needs.

FUTURE PLANS

The charity's aims and targets for the coming year are to continue expanding on its current services and programs.

STRUCTURE, GOVERNANCE AND MANAGEMENT

Governing document

The charity is controlled by its governing document, a deed of trust and constitutes an unincorporated charity.

Charity constitution

The Community Hub is a registered charity and a charitable incorporated organisation. The Trustees are responsible for governance of the organisation. Induction and training are provided for new trustees. None of the trustees have any beneficial interest in the charity.

STRUCTURE, GOVERNANCE AND MANAGEMENT

Risk management

The trustees have identified and reviewed the major risks to which the charity is exposed. Both manual and automated checks are regularly invoked, particularly those relating to the operations and finance of the charity. The trustees are satisfied that these systems and procedures mitigate any perceived risks.

The trustees continually review the risks that the charity may be exposed to and take appropriate action as required

REFERENCE AND ADMINISTRATIVE DETAILS

Registered Charity number

1171165

Principal address

122 Kyverdale Road
London
N16 6PR

Trustees

Mr A Klein
Mrs M Davidovitz
Mrs R Ehrnfeld
Mrs S Silbiger
Mrs R Heller

Independent Examiner

Mr A Heller FCA
Martin+Heller
5 North End Road
London
NW11 7RJ

Approved by order of the board of trustees on and signed on its behalf by:



Mr A Klein - Trustee

The Community Hub

Independent Examiner's Report to the Trustees

Independent examiner's report to the trustees of The Community Hub

I report to the charity trustees on my examination of the accounts of The Community Hub (the Trust) for the year ended 30 September 2024.

Responsibilities and basis of report

As the charity trustees of the Trust you are responsible for the preparation of the accounts in accordance with the requirements of the Charities Act 2011 ('the Act').

I report in respect of my examination of the Trust's accounts carried out under Section 145 of the Act and in carrying out my examination I have followed all applicable Directions given by the Charity Commission under Section 145(5) (b) of the Act.

Independent examiner's statement

I have completed my examination. I confirm that no material matters have come to my attention in connection with the examination giving me cause to believe that in any material respect:

1. accounting records were not kept in respect of the Trust as required by Section 130 of the Act; or
2. the accounts do not accord with those records; or
3. the accounts do not comply with the applicable requirements concerning the form and content of accounts set out

in the Charities (Accounts and Reports) Regulations 2008 other than any requirement that the accounts give a true and fair view which is not a matter considered as part of an independent examination.

I have no concerns and have come across no other matters in connection with the examination to which attention should

be drawn in this report in order to enable a proper understanding of the accounts to be reached.

Mr A Heller FCA
Martin+Heller
5 North End Road
London
NW11 7RJ

Date: 29/7/2025

The Community Hub

Statement of Financial Activities for the Year Ended 30 September 2024

	Notes	Unrestricted fund £	Restricted fund £	30.9.24 Total funds £	30.9.23 Total funds £
INCOME AND ENDOWMENTS FROM					
Donations and legacies		52,501	108,957	161,458	112,573
EXPENDITURE ON					
Raising funds	2	995	-	995	3,963
Charitable activities		40,660	104,955	145,615	99,840
Other		360	3,717	4,077	4,152
Total		42,015	108,672	150,687	107,955
NET INCOME		10,486	285	10,771	4,618
RECONCILIATION OF FUNDS					
Total funds brought forward		42,651	2,132	44,783	40,165
TOTAL FUNDS CARRIED FORWARD		53,137	2,417	55,554	44,783

The Community Hub

Balance Sheet
30 September 2024

	Notes	Unrestricted fund £	Restricted fund £	30.9.24 Total funds £	30.9.23 Total funds £
FIXED ASSETS					
Tangible assets	5	-	3,267	3,267	3,434
CURRENT ASSETS					
Debtors	6	42,127	-	42,127	36,560
Cash at bank		21,055	9,954	31,009	33,915
		63,182	9,954	73,136	70,475
CREDITORS					
Amounts falling due within one year	7	(10,045)	(10,804)	(20,849)	(29,126)
NET CURRENT ASSETS					
		53,137	(850)	52,287	41,349
TOTAL ASSETS LESS CURRENT					
LIABILITIES					
		53,137	2,417	55,554	44,783
NET ASSETS					
		53,137	2,417	55,554	44,783
FUNDS					
Unrestricted funds	8			53,137	42,651
Restricted funds				2,417	2,132
TOTAL FUNDS					
				55,554	44,783

The financial statements were approved by the Board of Trustees and authorised for issue on 29/07/25 and were signed on its behalf by:



Mr A Klein - Trustee

The Community Hub

Notes to the Financial Statements for the Year Ended 30 September 2024

1. ACCOUNTING POLICIES

Basis of preparing the financial statements

The financial statements of the charity, which is a public benefit entity under FRS 102, have been prepared in accordance with the Charities SORP (FRS 102) 'Accounting and Reporting by Charities: Statement of Recommended Practice applicable to charities preparing their accounts in accordance with the Financial Reporting Standard applicable in the UK and Republic of Ireland (FRS 102) (effective 1 January 2019)', Financial Reporting Standard 102 'The Financial Reporting Standard applicable in the UK and Republic of Ireland' and the Charities Act 2011. The financial statements have been prepared under the historical cost convention.

Income

All income is recognised in the Statement of Financial Activities once the charity has entitlement to the funds, it is probable that the income will be received and the amount can be measured reliably.

Expenditure

Liabilities are recognised as expenditure as soon as there is a legal or constructive obligation committing the charity to that expenditure, it is probable that a transfer of economic benefits will be required in settlement and the amount of the obligation can be measured reliably. Expenditure is accounted for on an accruals basis and has been classified under headings that aggregate all cost related to the category. Where costs cannot be directly attributed to particular headings they have been allocated to activities on a basis consistent with the use of resources.

Tangible fixed assets

Depreciation is provided at the following annual rates in order to write off each asset over its estimated useful life.

Computer equipment - straight line over 3 years

Taxation

The charity is exempt from tax on its charitable activities.

Fund accounting

Unrestricted funds can be used in accordance with the charitable objectives at the discretion of the trustees.

Restricted funds can only be used for particular restricted purposes within the objects of the charity. Restrictions arise when specified by the donor or when funds are raised for particular restricted purposes.

Further explanation of the nature and purpose of each fund is included in the notes to the financial statements.

The Community Hub

Notes to the Financial Statements for the Year Ended 30 September 2024

2. RAISING FUNDS

Raising donations and legacies	30.9.24	30.9.23
	£	£
Fund raising	90	3,785
Support costs	905	178
	995	3,963

3. TRUSTEES' REMUNERATION AND BENEFITS

There were no trustees' remuneration or other benefits for the year ended 30 September 2024 nor for the year ended 30 September 2023.

Trustees' expenses

There were no trustees' expenses paid for the year ended 30 September 2024 nor for the year ended 30 September 2023.

4 COMPARATIVES FOR THE STATEMENT OF FINANCIAL ACTIVITIES

INCOME AND ENDOWMENTS FROM

	Unrestricted fund £	Restricted fund £	Total funds £
Donations and legacies	41,013	71,560	112,573

EXPENDITURE ON

Raising funds	3,963	-	3,963
---------------	-------	---	-------

Charitable activities

Charitable activities	13,260	86,580	99,840
-----------------------	--------	--------	--------

Other	367	3,785	4,152
-------	-----	-------	-------

Total	17,590	90,365	107,955
--------------	--------	--------	---------

NET INCOME/(EXPENDITURE)	23,423	(18,805)	4,618
--------------------------	--------	----------	-------

RECONCILIATION OF FUNDS

Total funds brought forward	19,228	20,937	40,165
-----------------------------	--------	--------	--------

TOTAL FUNDS CARRIED FORWARD

	42,651	2,132	44,783
--	--------	-------	--------

The Community Hub

Notes to the Financial Statements for the Year Ended 30 September 2024

5. TANGIBLE FIXED ASSETS

	Computer equipment £
COST	
At 1 October 2023	11,356
Additions	3,550
At 30 September 2024	<u>14,906</u>
DEPRECIATION	
At 1 October 2023	7,922
Charge for year	3,717
At 30 September 2024	<u>11,639</u>
NET BOOK VALUE	
At 30 September 2024	<u>3,267</u>
At 30 September 2023	<u>3,434</u>

6. DEBTORS: AMOUNTS FALLING DUE WITHIN ONE YEAR

	30.9.24	30.9.23
Other debtors	<u>£ 42,127</u>	<u>£ 36,560</u>

7. CREDITORS: AMOUNTS FALLING DUE WITHIN ONE YEAR

	30.9.24	30.9.23
Trade creditors	£ 10,804	£ 18,861
Other creditors	10,045	10,265
	<u>20,849</u>	<u>29,126</u>

8. MOVEMENT IN FUNDS

	At 1/10/23 £	Net movement in funds £	At 30/9/24 £
Unrestricted funds			
General fund	42,651	10,486	53,137
Restricted funds			
Restricted fund	2,132	285	2,417
TOTAL FUNDS	<u>44,783</u>	<u>10,771</u>	<u>55,554</u>

Net movement in funds, included in the above are as follows:

	Incoming resources £	Resources expended £	Movement in funds £
Unrestricted funds			
General fund	52,501	(42,015)	10,486
Restricted funds			
Restricted fund	108,957	(108,672)	285
TOTAL FUNDS	<u>161,458</u>	<u>(150,687)</u>	<u>10,771</u>

The Community Hub

Notes to the Financial Statements for the Year Ended 30 September 2024

Comparatives for movement in funds

	At 1/10/22 £	Net movement in funds £	At 30/9/23 £
Unrestricted funds General fund	19,228	23,423	42,651
Restricted funds Restricted fund	20,937	(18,805)	2,132
TOTAL FUNDS	40,165	4,618	44,783

Comparative net movement in funds, included in the above are as follows:

	Incoming sources £	Resources expended £	Movement in funds £
Unrestricted funds General fund	41,013	(17,590)	23,423
Restricted funds Restricted fund	71,560	(90,365)	(18,805)
TOTAL FUNDS	112,573	(107,955)	4,618

A current year 12 months and prior year 12 months combined position is as follows:

	At 1/10/22 £	Net movement in funds £	At 30/9/24 £
Unrestricted funds General fund	19,228	33,909	53,137
Restricted funds Restricted fund	20,937	(18,520)	2,417
TOTAL FUNDS	40,165	15,389	55,554

A current year 12 months and prior year 12 months combined net movement in funds, included in the above are as follows:

	Incoming resources £	Resources expended £	Movement in funds £
Unrestricted funds General fund	93,514	(59,605)	33,909
Restricted funds Restricted fund	180,517	(199,037)	(18,520)
TOTAL FUNDS	274,031	(258,642)	15,389

9. RELATED PARTY DISCLOSURES

Amounts owing from charities with trustees in common with The Community Hub as at the balance sheet date totalled £200 (2023: £200).

The Community Hub

Detailed Statement of Financial Activities for the Year Ended 30 September 2024

	30.9.24	30.9.23
	£	£
INCOME AND ENDOWMENTS		
Donations and legacies		
Donations	161,458	112,573
Total incoming resources	161,458	112,573
EXPENDITURE		
Raising donations and legacies		
Fund raising	90	3,785
Charitable activities		
Training and events	32,208	19,660
Activities costs	26,478	34,214
Rent	33,997	17,849
Meals	28,078	4,896
Staff costs	24,854	23,221
	145,615	99,840
Support costs		
Finance		
Bank charges	-	7
Legal and professional fees	905	178
	905	185
Other		
Computer equipment	3,717	3,785
Governance costs		
Accountancy fees	360	360
Total resources expended	150,687	107,955
Net income	10,771	4,618

This page does not form part of the statutory financial statements

THE COMMUNITY HUB

England & Wales - Charity number 1171165

Accounts



*Rewriting Stories,
Transforming Lives*



The
Community
HUB
Creating opportunities
Providing solutions

ANNUAL ACCOUNTS 2023

Trustee Statement

2

At The Community Hub (TCH), we've experienced a dynamic and rewarding year, creating stories of hope, passion, and resilience. Throughout 2022/ 2023, we encountered tales fraught with despair and hopelessness, where women felt defeated. Yet, as an organization committed to smoothing life's hurdles for women, we see beyond their immediate struggles to the stories brimming with potential.

Since our inception in 2017, our charity has been dedicated to empowering disadvantaged women aged 18+ along their life journeys. We address unique challenges at every turn and equip them with the necessary skills and resources to navigate these obstacles.

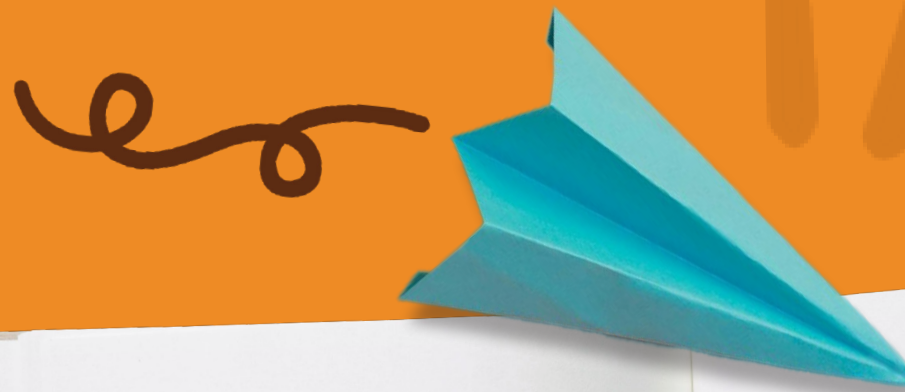
Amidst the looming cost-of-living crisis, our beneficiary count has surged significantly, reaching a total of 320 individuals as more women find themselves in dire circumstances. Whether it's assisting with employment, providing nourishment for their families, or stabilizing their finances, we stand alongside them. We offer a diverse array of programs and initiatives tailored to ease their burdens both financially and emotionally during this crisis.

At TCH, we firmly believe that no one should be resigned to being a mere victim of their stories. We see ourselves as the co-authors, aiding women at all stages of life in rewriting their narratives and ushering in new chapters filled with opportunity and hope.

We present to you our annual report, "*Rewriting Stories. Transforming Lives,*" offering a glimpse into the impactful work we do.

Thank you for your investment and support.

Mr Aron Klein



MISSION

The Community Hub's mission is to engage, empower, and equip marginalized women and girls to realize their aspirations, improve access, and create opportunities. We are dedicated to recognizing and addressing the diverse challenges these women face throughout different stages of their lives. By providing access to essential programs, skills, and support, we aim to help them reach their full potential and overcome the hurdles they encounter. This dedication ensures that every woman has the chance to shine, rise above her circumstances, and build a future she can be proud of.

Our devotion is unwavering as we endeavour to be a steadfast support system for the vulnerable women in our community. We want them to know [without a shadow of a doubt] that we stand by them at all times. In TCH's books, commitment isn't just a word; it's a promise to be the rock-solid support our women can always rely on.

VISION

We envision a thriving community where no one is left behind, and even the most vulnerable have equal opportunities for growth, success, and fulfilment. Vulnerabilities should not be barriers but springboards to success. We aim to create a space where women of all ages feel supported and heard, knowing that no matter how tough it gets, they are never alone. At The Community Hub, we strive for a community where every woman can confidently say, "I am valued, I am capable, and I have had the opportunity to thrive and succeed."



Previous and Progressing Projects

At TCH, we take pride in our diverse range of life-changing initiatives designed to improve the lives of our beneficiaries. For us, each project is more than just a project; it's a transformative experience, carefully crafted, refined, and continuously evaluated to ensure it meets the unique needs and desires of the women we support. We invite you to explore our work and achievements [though no words can capture their full impact].

Enjoy the read!

FINANCIAL SMARTIES

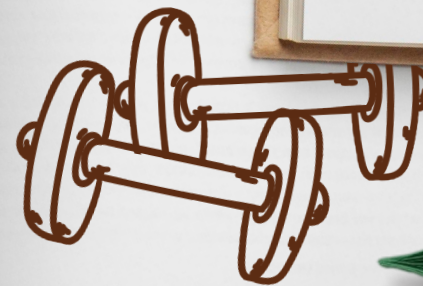
Financial Smarties stands as a pillar of support amidst the cost-of-living crisis, empowering young women and girls, aged 19-25, with AQA-accredited programs in financial literacy and economic security. Our bi-weekly sessions, offer interactive workshops, training in financial and budgeting skills, and dynamic seminars led by finance professionals. Through this initiative, participants experience increased financial literacy and enhanced economic security, instilling in our young women hope for a promising, prosperous future.

SLIM SMART

Slim Smart! engages inactive and vulnerable women and girls aged 19+ in invigorating, exercise sessions, offering benefits beyond physical activity. Participants gain self-expression, skill development, and heightened self-esteem. The outcomes include improved physical health, enhanced mental well-being, and a sense of community through shared experiences.

CREATIVE CAREERS

With our **Creative Careers** initiative, we assist young women and girls aged 19+, with reduced intellectual abilities, through creative course trainings, helping them acquire successful careers, suitable to their unique capabilities. Completion of these courses leads to AQA accreditation, fostering creativity and opening doors to diverse career opportunities. Participants report increased confidence, skill acquisition, and a pathway to fulfilling careers. After the project concludes, our team of dedicated volunteer youth workers offer personalised, one-on-one career guidance, assisting users in pursuing additional training, qualifications, and job shadowing opportunities.



Previous and Progressing Projects

FOOD FOR THOUGHT

Food for Thought addresses the needs of poverty-stricken mothers with young children. Once a week, they gather in our community kitchen to cook and learn basic culinary skills and food budgeting. This initiative not only provides practical skills, but also fosters a sense of community. Outcomes include improved nutrition for families, enhanced cooking abilities, and increased awareness of budget-friendly meal planning.

PEERS IN PARENTING

In our commitment to aiding vulnerable women and their families, within the community, one of our standouts and effective initiatives is the **“Peers in Parenting”** program. This project delivers tailored parenting classes, specifically designed for mothers facing the added challenges of raising children with special educational needs. In addition to the classes the project offers delightful stay-and-play sessions, providing a secure and enjoyable space for mothers to connect with their children.

WELLBOOST!

Our **WellBoost!** initiative, supports socially isolated elderly women aged 55+ through varied weekly social sessions to combat their loneliness and improve their overall quality of life. Outcomes include improved physical health through keep-fit classes, enhanced mental well-being through social connections, and an overall sense of purpose.



Our Vision Ahead

As we set our sights on the horizon at TCH, our dedication to uplifting vulnerable individuals and fostering their personal growth remains steadfast. While we cherish the impact of our existing endeavours, we eagerly anticipate launching fresh programs that will advance our charitable objectives.

THE GREAT OUTDOORS!

Engaging with the beauty of the 'great outdoors' is a powerful catalyst for healing and growth. We, therefore, aim to launch an outdoor nature project designed to provide a nurturing space for young women aged 19-25 to connect with nature, explore their surroundings, and cultivate a sense of peace and inner strength. Through guided activities such as hiking, gardening, and mindfulness exercises, participants will be encouraged to embrace their innate resilience, build confidence, and develop a deep appreciation for the natural world.

MUSIC TO THE EAR

We look forward to the launch of our exciting new music project designed for middle-aged women. This initiative will feature weekly singing sessions where participants will come together to sing well-known songs, accompanied by a talented pianist. Each session will focus on learning and perfecting beautiful harmonies, providing a supportive environment where women can explore their emotions, share their stories, and find solace through the universal language of music.

MENTORSHIP PROGRAM

We are eager to implement a mentorship program very soon, specifically aiding our most vulnerable users by providing personalized guidance. Our qualified Mentors will work closely with their mentees to identify goals and develop personalized action plans to address barriers and enhance their opportunities for growth.



Tara's Tale:

I work from 9 to 5 every day and always tell myself I'll cook a healthy meal for my family, but it never happens. I'm just too exhausted. Instead, I end up serving something quick and unhealthy because I don't have the time or money for anything else. Then Food for Thought stepped in and changed everything. Once a week, they provided my family with a warm, healthy meal, and they taught me quick and affordable ways to cook healthily. My family and I are forever grateful.

Sarah's story:

As a young woman stepping into adulthood, I encountered my fair share of challenges. The prospect of finding a meaningful job felt distant, and forming healthy relationships appeared elusive. Navigating budget management only added to the complexity. Fortunately, TCH has stood by me as a constant support, providing more than just advice—it's helped me surmount these obstacles and find my way. Thank you.

Noelle's Narrative:

I was so unfit that just walking up and down the stairs in my apartment building left me out of breath. I knew I needed to do something about it, but all the gyms were too expensive, and I lacked the motivation to keep going every week. Then I enrolled in Slim Smart and never looked back! Now, I'm as fit as a fiddle. Thank you!



THEIR STORIES IN NUMBERS



320

Beneficiaries



73

New beneficiaries



336

Sessions held



60

Women moved into employment



180

Women achieved an AQA accreditation



1,920

Nourishing meals prepared



60

Women into regular fitness classes



120

Women are confident in personal Financial Management



40

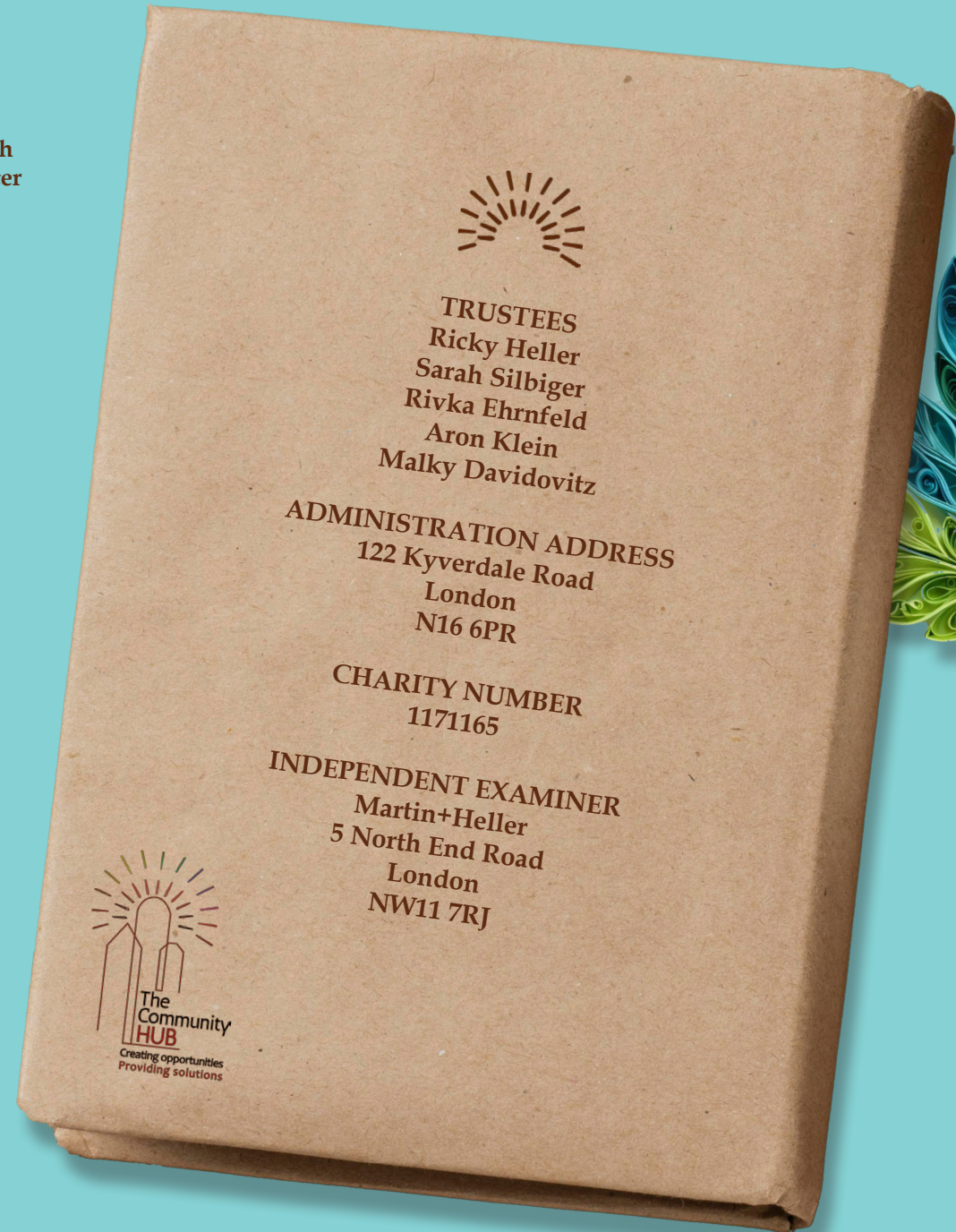
parents enrolled in parenting classes

Thank You

A huge thank you to all our supporters for being part of our story. Your generosity has helped us turn each page, creating new chapters filled with hope and empowerment. Together, we are crafting a narrative of a brighter and more sustainable future.

*Foundation For Future London
Hackney Giving
Hays Travel Foundation
Mercers Company
National Lottery Community
Fund
Santa Barbara Heights
UK Youth
Grace Charitable Trust
Groundwork UK*

*Happy Charitable Foundation
Invesco Cares Foundation
Makers of Playing Cards
Souter Charitable Trust
Warburtons
Barchester's Charitable
Foundation
Kemble Charitable Trust
Kiln Family Charitable Trust*



The trustees present their report with the financial statements of the charity for the year ended 30 September 2023. The trustees have adopted the provisions of Accounting and Reporting by Charities: Statement of Recommended Practice applicable to charities preparing their accounts in accordance with the Financial Reporting Standard applicable in the UK and Republic of Ireland (FRS 102) (effective 1 January 2019).

OBJECTIVES AND ACTIVITIES

Objectives and aims

Charitable objects:

To provide a range of trainings, advice and relationship building services and opportunities for vulnerable people.

The relief of poverty amongst persons in conditions of need, hardship, and distress.

To assist and support needy people in the interest of social welfare, designed to improve their conditions of life.

To further the education of deprived young adults through the continued development of their capabilities, skills and understanding in subjects of educational value.

The promotion of any other exclusively charitable objects and purposes such as the trustees see fit, provided that they are regarded as charitable by the law of England and Wales.

Our aims:

Many individuals between us, are living in challenging circumstances and deprived environments. Without the right support and interventions, they struggle to cope with their issues and often daily challenges. Whether their struggle is poverty, vulnerability and social isolation, family breakdown, bereavement, illness, learning disabilities or communication difficulties, every person needs someone to guide them to tackle their situation.

We unite people who are vulnerable and lonely.

We unite people who need a friend to talk to.

We unite people to share and communicate.

By bringing them together, we enable them to transform their lives into a brighter experience.

We believe that through guidance and support in a safe space, offering support and rapport, there is a scope for transformation in their lives.

Our mission:

To support vulnerable young people, adults and the elderly through invigorating activities in a safe, calm and relaxing environment giving them the opportunity to unwind from their daily struggles and hardships.

Our vision:

To empower deprived and disengaged people with skills and resilience to combat and succeed in their challenges and imbue them with hope for a better future.

OBJECTIVES AND ACTIVITIES

Significant activities

To support young parents who are struggling to parent their children who have additional needs.

To engage NEET young people in personal development, team building and communication skills training thus supporting them into employment.

To link socially isolated and low-income immigrants, who lack community support and feel vulnerable and unformed in their new environment, through social support groups.

To provide a range of weekly social programmes to elderly people who are lonely, vulnerable and face physical challenges.

To provide a relationship coaching programme to young people to guide and support them at the brink of marriage with continued support after marriage.

Telephone advice line offering a confidential support service.

Public benefit

The Trustees confirm their compliance with the duty to have due regard to the Public Benefit guidance published by the Charity Commission when reviewing the Charity's aims and objectives and in planning future activities.

FINANCIAL REVIEW

Principal funding sources

The charity's activities are supported by a mixture of funding streams including private donations, grants from trusts and users' contributions. The results for the period are shown in the attached financial statements.

Reserves policy

The trustees are working towards building reserves of at least 3 months' operating costs in order to protect services where there are uncertainties as to whether funding will continue and to ensure adequate cash flow for the organisation's needs.

FUTURE PLANS

The charity's aims and targets for the coming year are to continue expanding on its current services and programs.

STRUCTURE, GOVERNANCE AND MANAGEMENT

Governing document

The charity is controlled by its governing document, a deed of trust and constitutes an unincorporated charity.

Charity constitution

The Community Hub is a registered charity and a charitable incorporated organisation. The Trustees are responsible for governance of the organisation. Induction and training are provided for new trustees. None of the trustees have any beneficial interest in the charity.

Report of the Trustees
for the Year Ended 30 September 2023

STRUCTURE, GOVERNANCE AND MANAGEMENT

Risk management

The trustees have identified and reviewed the major risks to which the charity is exposed. Both manual and automated checks are regularly invoked, particularly those relating to the operations and finance of the charity. The trustees are satisfied that these systems and procedures mitigate any perceived risks.

The trustees continually review the risks that the charity may be exposed to and take appropriate action as required.

REFERENCE AND ADMINISTRATIVE DETAILS

Registered Charity number

1171165

Principal address

122 Kyverdale Road
London
N16 6PR

Trustees

Mr J Baumgarten (resigned 22.12.22)
Mr A Klein
Mrs M Davidovitz
Mrs R Ehmfeld
Mrs S Silbiger
Mrs R Heller

Independent Examiner

Mr A Heller FCA
Martin+Heller
5 North End Road
London
NW11 7RJ

Approved by order of the board of trustees on and signed on its behalf by:

.....
Mr A Klein - Trustee

Independent Examiner's Report
to the Trustees of The Community Hub

Independent examiner's report to the trustees of The Community Hub

I report to the charity trustees on my examination of the accounts of The Community Hub (the Trust) for the year ended 30 September 2023.

Responsibilities and basis of report

As the charity trustees of the Trust you are responsible for the preparation of the accounts in accordance with the requirements of the Charities Act 2011 ('the Act').

I report in respect of my examination of the Trust's accounts carried out under Section 145 of the Act and in carrying out my examination I have followed all applicable Directions given by the Charity Commission under Section 145(5)(b) of the Act.

Independent examiner's statement

I have completed my examination. I confirm that no material matters have come to my attention in connection with the examination giving me cause to believe that in any material respect:

1. accounting records were not kept in respect of the Trust as required by Section 130 of the Act; or
2. the accounts do not accord with those records; or
3. the accounts do not comply with the applicable requirements concerning the form and content of accounts set out in the Charities (Accounts and Reports) Regulations 2008 other than any requirement that the accounts give a true and fair view which is not a matter considered as part of an independent examination.

I have no concerns and have come across no other matters in connection with the examination to which attention should be drawn in this report in order to enable a proper understanding of the accounts to be reached.

Mr A Heller FCA

Martin+Heller
5 North End Road
London
NW11 7RJ

Date:

Statement of Financial Activities
for the Year Ended 30 September 2023

	Notes	Unrestricted fund £	Restricted fund £	30.9.23 Total funds £	30.9.22 Total funds £
INCOME AND ENDOWMENTS FROM					
Donations and legacies		41,013	71,560	112,573	98,425
EXPENDITURE ON					
Raising funds	2	3,963	-	3,963	-
Charitable activities					
Charitable activities		13,260	86,580	99,840	76,055
Other		367	3,785	4,152	3,246
Total		<u>17,590</u>	<u>90,365</u>	<u>107,955</u>	<u>79,301</u>
NET INCOME/(EXPENDITURE)		23,423	(18,805)	4,618	19,124
RECONCILIATION OF FUNDS					
Total funds brought forward		19,228	20,937	40,165	21,041
TOTAL FUNDS CARRIED FORWARD		<u>42,651</u>	<u>2,132</u>	<u>44,783</u>	<u>40,165</u>

The notes form part of these financial statements

Balance Sheet
30 September 2023

	Notes	Unrestricted fund £	Restricted fund £	30.9.23 Total funds £	30.9.22 Total funds £
FIXED ASSETS					
Tangible assets	5	-	3,434	3,434	4,519
CURRENT ASSETS					
Debtors	6	36,560	-	36,560	80,900
Cash at bank		<u>16,356</u>	<u>17,559</u>	<u>33,915</u>	<u>1,305</u>
		52,916	17,559	70,475	82,205
CREDITORS					
Amounts falling due within one year	7	(10,265)	(18,861)	(29,126)	(46,559)
NET CURRENT ASSETS		<u>42,651</u>	<u>(1,302)</u>	<u>41,349</u>	<u>35,646</u>
TOTAL ASSETS LESS CURRENT LIABILITIES		42,651	2,132	44,783	40,165
NET ASSETS/(LIABILITIES)		<u>42,651</u>	<u>2,132</u>	<u>44,783</u>	<u>40,165</u>
FUNDS					
Unrestricted funds	8			42,651	19,228
Restricted funds				2,132	20,937
TOTAL FUNDS				<u>44,783</u>	<u>40,165</u>

The financial statements were approved by the Board of Trustees and authorised for issue on
and were signed on its behalf by:

.....
Mr A Klein - Trustee

The notes form part of these financial statements

1. ACCOUNTING POLICIES

Basis of preparing the financial statements

The financial statements of the charity, which is a public benefit entity under FRS 102, have been prepared in accordance with the Charities SORP (FRS 102) 'Accounting and Reporting by Charities: Statement of Recommended Practice applicable to charities preparing their accounts in accordance with the Financial Reporting Standard applicable in the UK and Republic of Ireland (FRS 102) (effective 1 January 2019)', Financial Reporting Standard 102 'The Financial Reporting Standard applicable in the UK and Republic of Ireland' and the Charities Act 2011. The financial statements have been prepared under the historical cost convention.

Income

All income is recognised in the Statement of Financial Activities once the charity has entitlement to the funds, it is probable that the income will be received and the amount can be measured reliably.

Expenditure

Liabilities are recognised as expenditure as soon as there is a legal or constructive obligation committing the charity to that expenditure, it is probable that a transfer of economic benefits will be required in settlement and the amount of the obligation can be measured reliably. Expenditure is accounted for on an accruals basis and has been classified under headings that aggregate all cost related to the category. Where costs cannot be directly attributed to particular headings they have been allocated to activities on a basis consistent with the use of resources.

Tangible fixed assets

Depreciation is provided at the following annual rates in order to write off each asset over its estimated useful life.

Computer equipment - straight line over 3 years

Taxation

The charity is exempt from tax on its charitable activities.

Fund accounting

Unrestricted funds can be used in accordance with the charitable objectives at the discretion of the trustees.

Restricted funds can only be used for particular restricted purposes within the objects of the charity. Restrictions arise when specified by the donor or when funds are raised for particular restricted purposes.

Further explanation of the nature and purpose of each fund is included in the notes to the financial statements.

2. RAISING FUNDS

Raising donations and legacies

	30.9.23	30.9.22
	£	£
Fund raising	3,785	-
Support costs	178	-
	<u>3,963</u>	<u>-</u>

3. TRUSTEES' REMUNERATION AND BENEFITS

There were no trustees' remuneration or other benefits for the year ended 30 September 2023 nor for the year ended 30 September 2022.

Trustees' expenses

There were no trustees' expenses paid for the year ended 30 September 2023 nor for the year ended 30 September 2022.

4. COMPARATIVES FOR THE STATEMENT OF FINANCIAL ACTIVITIES

	Unrestricted fund £	Restricted fund £	Total funds £
INCOME AND ENDOWMENTS FROM			
Donations and legacies	<u>4,335</u>	<u>94,090</u>	<u>98,425</u>
EXPENDITURE ON			
Charitable activities			
Charitable activities	-	76,055	76,055
Other	<u>361</u>	<u>2,885</u>	<u>3,246</u>
Total	<u>361</u>	<u>78,940</u>	<u>79,301</u>
NET INCOME	3,974	15,150	19,124
RECONCILIATION OF FUNDS			
Total funds brought forward	<u>15,254</u>	<u>5,787</u>	<u>21,041</u>
TOTAL FUNDS CARRIED FORWARD	<u>19,228</u>	<u>20,937</u>	<u>40,165</u>

Notes to the Financial Statements
for the Year Ended 30 September 2023

5. TANGIBLE FIXED ASSETS

	Computer equipment £
COST	
At 1 October 2022	8,656
Additions	<u>2,700</u>
At 30 September 2023	<u>11,356</u>
DEPRECIATION	
At 1 October 2022	4,137
Charge for year	<u>3,785</u>
At 30 September 2023	<u>7,922</u>
NET BOOK VALUE	
At 30 September 2023	<u>3,434</u>
At 30 September 2022	<u>4,519</u>

6. DEBTORS: AMOUNTS FALLING DUE WITHIN ONE YEAR

	30.9.23 £	30.9.22 £
Other debtors	<u>36,560</u>	<u>80,900</u>

7. CREDITORS: AMOUNTS FALLING DUE WITHIN ONE YEAR

	30.9.23 £	30.9.22 £
Trade creditors	18,861	45,839
Other creditors	10,265	720
	<u>29,126</u>	<u>46,559</u>

8. MOVEMENT IN FUNDS

	At 1/10/22 £	Net movement in funds £	At 30/9/23 £
Unrestricted funds			
General fund	19,228	23,423	42,651
Restricted funds			
Restricted fund	20,937	(18,805)	2,132
TOTAL FUNDS	<u>40,165</u>	<u>4,618</u>	<u>44,783</u>

Notes to the Financial Statements
for the Year Ended 30 September 2023

8. MOVEMENT IN FUNDS - continued

Net movement in funds, included in the above are as follows:

	Incoming resources £	Resources expended £	Movement in funds £
Unrestricted funds			
General fund	41,013	(17,590)	23,423
Restricted funds			
Restricted fund	71,560	(90,365)	(18,805)
TOTAL FUNDS	<u>112,573</u>	<u>(107,955)</u>	<u>4,618</u>

Comparatives for movement in funds

	At 1/10/21 £	Net movement in funds £	At 30/9/22 £
Unrestricted funds			
General fund	15,254	3,974	19,228
Restricted funds			
Restricted fund	5,787	15,150	20,937
TOTAL FUNDS	<u>21,041</u>	<u>19,124</u>	<u>40,165</u>

Comparative net movement in funds, included in the above are as follows:

	Incoming resources £	Resources expended £	Movement in funds £
Unrestricted funds			
General fund	4,335	(361)	3,974
Restricted funds			
Restricted fund	94,090	(78,940)	15,150
TOTAL FUNDS	<u>98,425</u>	<u>(79,301)</u>	<u>19,124</u>

Notes to the Financial Statements
for the Year Ended 30 September 2023

8. MOVEMENT IN FUNDS - continued

A current year 12 months and prior year 12 months combined position is as follows:

	At 1/10/21 £	Net movement in funds £	At 30/9/23 £
Unrestricted funds			
General fund	15,254	27,397	42,651
Restricted funds			
Restricted fund	5,787	(3,655)	2,132
TOTAL FUNDS	<u>21,041</u>	<u>23,742</u>	<u>44,783</u>

A current year 12 months and prior year 12 months combined net movement in funds, included in the above are as follows:

	Incoming resources £	Resources expended £	Movement in funds £
Unrestricted funds			
General fund	45,348	(17,951)	27,397
Restricted funds			
Restricted fund	165,650	(169,305)	(3,655)
TOTAL FUNDS	<u>210,998</u>	<u>(187,256)</u>	<u>23,742</u>

9. RELATED PARTY DISCLOSURES

Amounts owing from charities with trustees in common with The Community Hub as at the balance sheet date totalled £200 (2022: £200).

Detailed Statement of Financial Activities
for the Year Ended 30 September 2023

	30.9.23 £	30.9.22 £
INCOME AND ENDOWMENTS		
Donations and legacies		
Donations	112,573	98,425
Total incoming resources	<u>112,573</u>	<u>98,425</u>
EXPENDITURE		
Raising donations and legacies		
Fund raising	3,785	-
Charitable activities		
Training and events	19,660	30,183
Activities costs	34,214	-
Rent	17,849	20,475
Meals	4,896	15,895
Printing, postage & stationary	-	4,397
Staff costs	23,221	5,105
	<u>99,840</u>	<u>76,055</u>
Support costs		
Finance		
Bank charges	7	1
Legal and professional fees	178	-
	<u>185</u>	<u>1</u>
Other		
Computer equipment	3,785	2,885
Governance costs		
Accountancy fees	360	360
Total resources expended	<u>107,955</u>	<u>79,301</u>
Net income	<u>4,618</u>	<u>19,124</u>

THE COMMUNITY HUB

England & Wales - Charity number 1171165

Accounts

**Report of the Trustees and
Unaudited Financial Statements for the Year Ended 30 September 2022
for
The Community Hub**

Martin+Heller
5 North End Road
London
NW11 7RJ

The Community Hub

Contents of the Financial Statements for the Year Ended 30 September 2022

	Page
Report of the Trustees	1 to 3
Independent Examiner's Report	4
Statement of Financial Activities	5
Balance Sheet	6
Notes to the Financial Statements	7 to 11
Detailed Statement of Financial Activities	12

The Community Hub

Report of the Trustees for the Year Ended 30 September 2022

The trustees present their report with the financial statements of the charity for the year ended 30 September 2022. The trustees have adopted the provisions of Accounting and Reporting by Charities: Statement of Recommended Practice applicable to charities preparing their accounts in accordance with the Financial Reporting Standard applicable in the UK and Republic of Ireland (FRS 102) (effective 1 January 2019).

OBJECTIVES AND ACTIVITIES

Objectives and aims

Charitable objects:

To provide a range of trainings, advice and relationship building services and opportunities for vulnerable people.

The relief of poverty amongst persons in conditions of need, hardship, and distress.

To assist and support needy people in the interest of social welfare, designed to improve their conditions of life.

To further the education of deprived young adults through the continued development of their capabilities, skills and understanding in subjects of educational value.

The promotion of any other exclusively charitable objects and purposes such as the trustees see fit, provided that they are regarded as charitable by the law of England and Wales.

Our aims:

Many individuals between us, are living in challenging circumstances and deprived environments. Without the right support and interventions, they struggle to cope with their issues and often daily challenges. Whether their struggle is poverty, vulnerability and social isolation, family breakdown, bereavement, illness, learning disabilities or communication difficulties, every person needs someone to guide them to tackle their situation.

We unite people who are vulnerable and lonely.

We unite people who need a friend to talk to.

We unite people to share and communicate.

By bringing them together, we enable them to transform their lives into a brighter experience.

We believe that through guidance and support in a safe space, offering support and rapport, there is a scope for transformation in their lives.

Our mission:

To support vulnerable young people, adults and the elderly through invigorating activities in a safe, calm and relaxing environment giving them the opportunity to unwind from their daily struggles and hardships.

Our vision:

To empower deprived and disengaged people with skills and resilience to combat and succeed in their challenges and imbue them with hope for a better future.

The Community Hub

Report of the Trustees for the Year Ended 30 September 2022

OBJECTIVES AND ACTIVITIES

Significant activities

To support young parents who are struggling to parent their children who have additional needs.

To engage NEET young people in personal development, team building and communication skills training thus supporting them into employment.

To link socially isolated and low-income immigrants, who lack community support and feel vulnerable and unformed in their new environment, through social support groups.

To provide a range of weekly social programmes to elderly people who are lonely, vulnerable and face physical challenges.

To provide a relationship coaching programme to young people to guide and support them at the brink of marriage with continued support after marriage.

Telephone advice line offering a confidential support service.

Public benefit

The Trustees confirm their compliance with the duty to have due regard to the Public Benefit guidance published by the Charity Commission when reviewing the Charity's aims and objectives and in planning future activities.

ACHIEVEMENT AND PERFORMANCE

Charitable activities

What we have delivered this year:

35 elderly people supported and invigorated through the Wellboost healthy life programme.

30 elderly people benefitted through the Wellboost sport programme.

45 young people experienced a change in their personal development and received individualised guidance, resulting in their employment.

85 young parents received support, guidance and referrals for their child/ren with additional emotional needs.

30 vulnerable young people, mostly immigrants, were united and supported through our Links programme.

FINANCIAL REVIEW

Principal funding sources

The charity's activities are supported by a mixture of funding streams including private donations, grants from trusts and users' contributions. The results for the period are shown in the attached financial statements.

Reserves policy

The trustees are working towards building reserves of at least 3 months' operating costs in order to protect services where there are uncertainties as to whether funding will continue and to ensure adequate cash flow for the organisation's needs.

FUTURE PLANS

The charity's aims and targets for the coming year are to continue expanding on its current services and programs.

STRUCTURE, GOVERNANCE AND MANAGEMENT

Governing document

The charity is controlled by its governing document, a deed of trust and constitutes an unincorporated charity.

Charity constitution

The Community Hub is a registered charity and a charitable incorporated organisation. The Trustees are responsible for governance of the organisation. Induction and training are provided for new trustees. None of the trustees have any beneficial interest in the charity.

The Community Hub

**Report of the Trustees
for the Year Ended 30 September 2022**

STRUCTURE, GOVERNANCE AND MANAGEMENT

Risk management

The trustees have identified and reviewed the major risks to which the charity is exposed. Both manual and automated checks are regularly invoked, particularly those relating to the operations and finance of the charity. The trustees are satisfied that these systems and procedures mitigate any perceived risks.

The trustees continually review the risks that the charity may be exposed to and take appropriate action as required.

REFERENCE AND ADMINISTRATIVE DETAILS

Registered Charity number

1171165

Principal address

122 Kyverdale Road
London
N16 6PR

Trustees

Mr J Baumgarten (resigned 22.12.22)
Mr A Klein
Mr A Cullish (resigned 12.10.21)
Mrs M Davidovitz
Mrs R Ehrnfeld (appointed 12.10.21)
Mrs S Silbiger (appointed 12.10.21)
Mrs R Heller (appointed 12.10.21)

Independent Examiner

Mr A Heller FCA
Martin+Heller
5 North End Road
London
NW11 7RJ

Approved by order of the board of trustees on and signed on its behalf by:

.....
Mr A Klein - Trustee

**Independent Examiner's Report to the Trustees of
The Community Hub**

Independent examiner's report to the trustees of The Community Hub

I report to the charity trustees on my examination of the accounts of The Community Hub (the Trust) for the year ended 30 September 2022.

Responsibilities and basis of report

As the charity trustees of the Trust you are responsible for the preparation of the accounts in accordance with the requirements of the Charities Act 2011 ('the Act').

I report in respect of my examination of the Trust's accounts carried out under Section 145 of the Act and in carrying out my examination I have followed all applicable Directions given by the Charity Commission under Section 145(5)(b) of the Act.

Independent examiner's statement

I have completed my examination. I confirm that no material matters have come to my attention in connection with the examination giving me cause to believe that in any material respect:

1. accounting records were not kept in respect of the Trust as required by Section 130 of the Act; or
2. the accounts do not accord with those records; or
3. the accounts do not comply with the applicable requirements concerning the form and content of accounts set out in the Charities (Accounts and Reports) Regulations 2008 other than any requirement that the accounts give a true and fair view which is not a matter considered as part of an independent examination.

I have no concerns and have come across no other matters in connection with the examination to which attention should be drawn in this report in order to enable a proper understanding of the accounts to be reached.

Mr A Heller FCA

Martin+Heller
5 North End Road
London
NW11 7RJ

Date:

The Community Hub

Statement of Financial Activities for the Year Ended 30 September 2022

	Notes	Unrestricted fund £	Restricted fund £	30.9.22 Total funds £	30.9.21 Total funds £
INCOME AND ENDOWMENTS FROM					
Donations and legacies		4,335	94,090	98,425	100,239
EXPENDITURE ON					
Raising funds		-	-	-	1,252
Charitable activities					
Charitable activities		-	76,055	76,055	107,395
Other		361	2,885	3,246	439
Total		361	78,940	79,301	109,086
NET INCOME/(EXPENDITURE)		3,974	15,150	19,124	(8,847)
RECONCILIATION OF FUNDS					
Total funds brought forward		15,254	5,787	21,041	29,888
TOTAL FUNDS CARRIED FORWARD		19,228	20,937	40,165	21,041

The notes form part of these financial statements

The Community Hub

**Balance Sheet
30 September 2022**

	Notes	Unrestricted fund £	Restricted fund £	30.9.22 Total funds £	30.9.21 Total funds £
FIXED ASSETS					
Tangible assets	4	-	4,519	4,519	2,504
CURRENT ASSETS					
Debtors	5	65,787	15,113	80,900	5,400
Cash at bank		-	1,305	1,305	13,497
		<u>65,787</u>	<u>16,418</u>	<u>82,205</u>	<u>18,897</u>
CREDITORS					
Amounts falling due within one year	6	(46,559)	-	(46,559)	(360)
NET CURRENT ASSETS		<u>19,228</u>	<u>16,418</u>	<u>35,646</u>	<u>18,537</u>
TOTAL ASSETS LESS CURRENT LIABILITIES		<u>19,228</u>	<u>20,937</u>	<u>40,165</u>	<u>21,041</u>
NET ASSETS		<u>19,228</u>	<u>20,937</u>	<u>40,165</u>	<u>21,041</u>
FUNDS					
Unrestricted funds	7			19,228	15,254
Restricted funds				20,937	5,787
TOTAL FUNDS				<u>40,165</u>	<u>21,041</u>

The financial statements were approved by the Board of Trustees and authorised for issue on
and were signed on its behalf by:

.....
Mr A Klein - Trustee

1. ACCOUNTING POLICIES

Basis of preparing the financial statements

The financial statements of the charity, which is a public benefit entity under FRS 102, have been prepared in accordance with the Charities SORP (FRS 102) 'Accounting and Reporting by Charities: Statement of Recommended Practice applicable to charities preparing their accounts in accordance with the Financial Reporting Standard applicable in the UK and Republic of Ireland (FRS 102) (effective 1 January 2019)', Financial Reporting Standard 102 'The Financial Reporting Standard applicable in the UK and Republic of Ireland' and the Charities Act 2011. The financial statements have been prepared under the historical cost convention.

Income

All income is recognised in the Statement of Financial Activities once the charity has entitlement to the funds, it is probable that the income will be received and the amount can be measured reliably.

Expenditure

Liabilities are recognised as expenditure as soon as there is a legal or constructive obligation committing the charity to that expenditure, it is probable that a transfer of economic benefits will be required in settlement and the amount of the obligation can be measured reliably. Expenditure is accounted for on an accruals basis and has been classified under headings that aggregate all cost related to the category. Where costs cannot be directly attributed to particular headings they have been allocated to activities on a basis consistent with the use of resources.

Tangible fixed assets

Depreciation is provided at the following annual rates in order to write off each asset over its estimated useful life.

Computer equipment - straight line over 3 years

Taxation

The charity is exempt from tax on its charitable activities.

Fund accounting

Unrestricted funds can be used in accordance with the charitable objectives at the discretion of the trustees.

Restricted funds can only be used for particular restricted purposes within the objects of the charity. Restrictions arise when specified by the donor or when funds are raised for particular restricted purposes.

Further explanation of the nature and purpose of each fund is included in the notes to the financial statements.

2. TRUSTEES' REMUNERATION AND BENEFITS

There were no trustees' remuneration or other benefits for the year ended 30 September 2022 nor for the year ended 30 September 2021.

Trustees' expenses

There were no trustees' expenses paid for the year ended 30 September 2022 nor for the year ended 30 September 2021.

3. COMPARATIVES FOR THE STATEMENT OF FINANCIAL ACTIVITIES

	Unrestricted fund £	Restricted fund £	Total funds £
INCOME AND ENDOWMENTS FROM			
Donations and legacies	517	99,722	100,239
EXPENDITURE ON			
Raising funds	-	1,252	1,252
Charitable activities			
Charitable activities	222	107,173	107,395
Other	439	-	439
Total	661	108,425	109,086
NET INCOME/(EXPENDITURE)	(144)	(8,703)	(8,847)
RECONCILIATION OF FUNDS			
Total funds brought forward	15,398	14,490	29,888
TOTAL FUNDS CARRIED FORWARD	15,254	5,787	21,041

4. TANGIBLE FIXED ASSETS

	Computer equipment £
COST	
At 1 October 2021	3,756
Additions	4,900
At 30 September 2022	8,656
DEPRECIATION	
At 1 October 2021	1,252
Charge for year	2,885
At 30 September 2022	4,137
NET BOOK VALUE	
At 30 September 2022	4,519
At 30 September 2021	2,504

The Community Hub

Notes to the Financial Statements - continued
for the Year Ended 30 September 2022

5. DEBTORS: AMOUNTS FALLING DUE WITHIN ONE YEAR		30.9.22	30.9.21
		£	£
Other debtors		80,900	5,400
		<u> </u>	<u> </u>
 6. CREDITORS: AMOUNTS FALLING DUE WITHIN ONE YEAR		30.9.22	30.9.21
		£	£
Trade creditors		45,839	-
Other creditors		720	360
		<u> </u>	<u> </u>
		46,559	360
		<u> </u>	<u> </u>
 7. MOVEMENT IN FUNDS			
		Net	
	At 1/10/21	movement	At 30/9/22
	£	in funds	£
Unrestricted funds			
General fund	15,254	3,974	19,228
Restricted funds			
Restricted fund	5,787	15,150	20,937
	<u> </u>	<u> </u>	<u> </u>
TOTAL FUNDS	<u>21,041</u>	<u>19,124</u>	<u>40,165</u>

Net movement in funds, included in the above are as follows:

	Incoming	Resources	Movement
	resources	expended	in funds
	£	£	£
Unrestricted funds			
General fund	4,335	(361)	3,974
Restricted funds			
Restricted fund	94,090	(78,940)	15,150
	<u> </u>	<u> </u>	<u> </u>
TOTAL FUNDS	<u>98,425</u>	<u>(79,301)</u>	<u>19,124</u>

Notes to the Financial Statements - continued
for the Year Ended 30 September 2022

7. MOVEMENT IN FUNDS - continued

Comparatives for movement in funds

	At 1/10/20 £	Net movement in funds £	At 30/9/21 £
Unrestricted funds			
General fund	15,398	(144)	15,254
Restricted funds			
Restricted fund	14,490	(8,703)	5,787
TOTAL FUNDS	<u>29,888</u>	<u>(8,847)</u>	<u>21,041</u>

Comparative net movement in funds, included in the above are as follows:

	Incoming resources £	Resources expended £	Movement in funds £
Unrestricted funds			
General fund	517	(661)	(144)
Restricted funds			
Restricted fund	99,722	(108,425)	(8,703)
TOTAL FUNDS	<u>100,239</u>	<u>(109,086)</u>	<u>(8,847)</u>

A current year 12 months and prior year 12 months combined position is as follows:

	At 1/10/20 £	Net movement in funds £	At 30/9/22 £
Unrestricted funds			
General fund	15,398	3,830	19,228
Restricted funds			
Restricted fund	14,490	6,447	20,937
TOTAL FUNDS	<u>29,888</u>	<u>10,277</u>	<u>40,165</u>

Notes to the Financial Statements - continued
for the Year Ended 30 September 2022

7. MOVEMENT IN FUNDS - continued

A current year 12 months and prior year 12 months combined net movement in funds, included in the above are as follows:

	Incoming resources £	Resources expended £	Movement in funds £
Unrestricted funds			
General fund	4,852	(1,022)	3,830
Restricted funds			
Restricted fund	193,812	(187,365)	6,447
TOTAL FUNDS	<u>198,664</u>	<u>(188,387)</u>	<u>10,277</u>

8. RELATED PARTY DISCLOSURES

There were no related party transactions for the year ended 30 September 2022.

The Community Hub

Detailed Statement of Financial Activities for the Year Ended 30 September 2022

	30.9.22 £	30.9.21 £
INCOME AND ENDOWMENTS		
Donations and legacies		
Donations	98,425	100,239
Total incoming resources	98,425	100,239
EXPENDITURE		
Charitable activities		
Professional and consultancy fees	30,183	17,726
Computer & software	-	222
Rent	20,475	19,960
Food and events	15,895	43,560
Printing, postage & stationary	4,397	3,856
Staff training	5,105	22,071
	76,055	107,395
Support costs		
Finance		
Bank charges	1	79
Other		
Computer equipment	2,885	1,252
Governance costs		
Accountancy fees	360	360
Total resources expended	79,301	109,086
Net income/(expenditure)	19,124	(8,847)

This page does not form part of the statutory financial statements

THE COMMUNITY HUB

England & Wales - Charity number 1171165

Accounts

**Report of the Trustees and
Unaudited Financial Statements for the Year Ended 30 September 2021
for
The Community Hub**

Martin+Heller
5 North End Road
London
NW11 7RJ

The Community Hub

**Contents of the Financial Statements
for the Year Ended 30 September 2021**

	Page
Report of the Trustees	1 to 3
Independent Examiner's Report	4
Statement of Financial Activities	5
Balance Sheet	6
Notes to the Financial Statements	7 to 11
Detailed Statement of Financial Activities	12

The Community Hub

Report of the Trustees for the Year Ended 30 September 2021

The trustees present their report with the financial statements of the charity for the year ended 30 September 2021. The trustees have adopted the provisions of Accounting and Reporting by Charities: Statement of Recommended Practice applicable to charities preparing their accounts in accordance with the Financial Reporting Standard applicable in the UK and Republic of Ireland (FRS 102) (effective 1 January 2019).

OBJECTIVES AND ACTIVITIES

Objectives and aims

Charitable objects:

To provide a range of trainings, advice and relationship building services and opportunities for vulnerable people.

The relief of poverty amongst persons in conditions of need, hardship, and distress.

To assist and support needy people in the interest of social welfare, designed to improve their conditions of life.

To further the education of deprived young adults through the continued development of their capabilities, skills and understanding in subjects of educational value.

The promotion of any other exclusively charitable objects and purposes such as the trustees see fit, provided that they are regarded as charitable by the law of England and Wales.

Our aims:

Many individuals between us, are living in challenging circumstances and deprived environments. Without the right support and interventions, they struggle to cope with their issues and often daily challenges. Whether their struggle is poverty, vulnerability and social isolation, family breakdown, bereavement, illness, learning disabilities or communication difficulties, every person needs someone to guide them to tackle their situation.

We unite people who are vulnerable and lonely.

We unite people who need a friend to talk to.

We unite people to share and communicate.

By bringing them together, we enable them to transform their lives into a brighter experience.

We believe that through guidance and support in a safe space, offering support and rapport, there is a scope for transformation in their lives.

Our mission:

To support vulnerable young people, adults and the elderly through invigorating activities in a safe, calm and relaxing environment giving them the opportunity to unwind from their daily struggles and hardships.

Our vision:

To empower deprived and disengaged people with skills and resilience to combat and succeed in their challenges and imbue them with hope for a better future.

The Community Hub

Report of the Trustees for the Year Ended 30 September 2021

OBJECTIVES AND ACTIVITIES

Significant activities

To support young parents who are struggling to parent their children who have additional needs.

To engage NEET young people in personal development, team building and communication skills training thus supporting them into employment.

To link socially isolated and low-income immigrants, who lack community support and feel vulnerable and unformed in their new environment, through social support groups.

To provide a range of weekly social programmes to elderly people who are lonely, vulnerable and face physical challenges.

To provide a relationship coaching programme to young people to guide and support them at the brink of marriage with continued support after marriage.

Telephone advice line offering a confidential support service.

Public benefit

The Trustees confirm their compliance with the duty to have due regard to the Public Benefit guidance published by the Charity Commission when reviewing the Charity's aims and objectives and in planning future activities.

ACHIEVEMENT AND PERFORMANCE

Charitable activities

What we have delivered this year:

35 elderly people supported and invigorated through the Wellboost healthy life programme.

30 elderly people benefitted through the Wellboost sport programme.

45 young people experienced a change in their personal development and received individualised guidance, resulting in their employment.

85 young parents received support, guidance and referrals for their child/ren with additional emotional needs.

30 vulnerable young people, mostly immigrants, were united and supported through our Links programme.

FINANCIAL REVIEW

Principal funding sources

The charity's activities are supported by a mixture of funding streams including private donations, grants from trusts and users' contributions. The results for the period are shown in the attached financial statements.

Reserves policy

The trustees are working towards building reserves of at least 3 months' operating costs in order to protect services where there are uncertainties as to whether funding will continue and to ensure adequate cash flow for the organisation's needs.

FUTURE PLANS

The charity's aims and targets for 2021 are to continue expanding on its current services and programs.

STRUCTURE, GOVERNANCE AND MANAGEMENT

Governing document

The charity is controlled by its governing document, a deed of trust and constitutes an unincorporated charity.

Charity constitution

The Community Hub is a registered charity and a charitable incorporated organisation. The Trustees are responsible for governance of the organisation. Induction and training are provided for new trustees. None of the trustees have any beneficial interest in the charity.

The Community Hub

**Report of the Trustees
for the Year Ended 30 September 2021**

STRUCTURE, GOVERNANCE AND MANAGEMENT

Risk management

The trustees have identified and reviewed the major risks to which the charity is exposed. Both manual and automated checks are regularly invoked, particularly those relating to the operations and finance of the charity. The trustees are satisfied that these systems and procedures mitigate any perceived risks.

The trustees continually review the risks that the charity may be exposed to and take appropriate action as required.

REFERENCE AND ADMINISTRATIVE DETAILS

Registered Charity number

1171165

Principal address

122 Kyverdale Road
London
N16 6PR

Trustees

Mr J Baumgarten
Mr A Klein
Mr A Cullish (resigned 12.10.21)
Mrs M Davidovitz
Mrs R Ehrnfeld (appointed 12.10.21)
Mrs S Silbiger (appointed 12.10.21)
Mrs R Heller (appointed 12.10.21)

Independent Examiner

Mr A Heller FCA
Martin+Heller
5 North End Road
London
NW11 7RJ

Approved by order of the board of trustees on and signed on its behalf by:

.....
Mr A Klein - Trustee

**Independent Examiner's Report to the Trustees of
The Community Hub**

Independent examiner's report to the trustees of The Community Hub

I report to the charity trustees on my examination of the accounts of The Community Hub (the Trust) for the year ended 30 September 2021.

Responsibilities and basis of report

As the charity trustees of the Trust you are responsible for the preparation of the accounts in accordance with the requirements of the Charities Act 2011 ('the Act').

I report in respect of my examination of the Trust's accounts carried out under section 145 of the Act and in carrying out my examination I have followed all applicable Directions given by the Charity Commission under section 145(5)(b) of the Act.

Independent examiner's statement

I have completed my examination. I confirm that no material matters have come to my attention in connection with the examination giving me cause to believe that in any material respect:

1. accounting records were not kept in respect of the Trust as required by section 130 of the Act; or
2. the accounts do not accord with those records; or
3. the accounts do not comply with the applicable requirements concerning the form and content of accounts set out in the Charities (Accounts and Reports) Regulations 2008 other than any requirement that the accounts give a true and fair view which is not a matter considered as part of an independent examination.

I have no concerns and have come across no other matters in connection with the examination to which attention should be drawn in this report in order to enable a proper understanding of the accounts to be reached.

Mr A Heller FCA
Martin+Heller
5 North End Road
London
NW11 7RJ

Date:

The Community Hub

**Statement of Financial Activities
for the Year Ended 30 September 2021**

	Notes	Unrestricted fund £	Restricted fund £	30.9.21 Total funds £	30.9.20 Total funds £
INCOME AND ENDOWMENTS FROM					
Donations and legacies		517	99,722	100,239	66,577
EXPENDITURE ON					
Raising funds		-	1,252	1,252	102
Charitable activities					
Charitable activities		222	107,173	107,395	36,416
Other		439	-	439	371
Total		<u>661</u>	<u>108,425</u>	<u>109,086</u>	<u>36,889</u>
NET INCOME/(EXPENDITURE)		(144)	(8,703)	(8,847)	29,688
RECONCILIATION OF FUNDS					
Total funds brought forward		15,398	14,490	29,888	200
TOTAL FUNDS CARRIED FORWARD		<u><u>15,254</u></u>	<u><u>5,787</u></u>	<u><u>21,041</u></u>	<u><u>29,888</u></u>

The notes form part of these financial statements

The Community Hub

**Balance Sheet
30 September 2021**

	Notes	Unrestricted fund £	Restricted fund £	30.9.21 Total funds £	30.9.20 Total funds £
FIXED ASSETS					
Tangible assets	4	-	2,504	2,504	-
CURRENT ASSETS					
Debtors	5	5,400	-	5,400	5,200
Cash at bank		10,214	3,283	13,497	25,408
		<u>15,614</u>	<u>3,283</u>	<u>18,897</u>	<u>30,608</u>
CREDITORS					
Amounts falling due within one year	6	(360)	-	(360)	(720)
NET CURRENT ASSETS		<u>15,254</u>	<u>3,283</u>	<u>18,537</u>	<u>29,888</u>
TOTAL ASSETS LESS CURRENT LIABILITIES		<u>15,254</u>	<u>5,787</u>	<u>21,041</u>	<u>29,888</u>
NET ASSETS		<u>15,254</u>	<u>5,787</u>	<u>21,041</u>	<u>29,888</u>
FUNDS					
Unrestricted funds	7			15,254	15,398
Restricted funds				5,787	14,490
TOTAL FUNDS				<u>21,041</u>	<u>29,888</u>

The financial statements were approved by the Board of Trustees and authorised for issue on and were signed on its behalf by:

.....
Mr A Klein - Trustee

1. ACCOUNTING POLICIES

Basis of preparing the financial statements

The financial statements of the charity, which is a public benefit entity under FRS 102, have been prepared in accordance with the Charities SORP (FRS 102) 'Accounting and Reporting by Charities: Statement of Recommended Practice applicable to charities preparing their accounts in accordance with the Financial Reporting Standard applicable in the UK and Republic of Ireland (FRS 102) (effective 1 January 2019)', Financial Reporting Standard 102 'The Financial Reporting Standard applicable in the UK and Republic of Ireland' and the Charities Act 2011. The financial statements have been prepared under the historical cost convention.

Income

All income is recognised in the Statement of Financial Activities once the charity has entitlement to the funds, it is probable that the income will be received and the amount can be measured reliably.

Expenditure

Liabilities are recognised as expenditure as soon as there is a legal or constructive obligation committing the charity to that expenditure, it is probable that a transfer of economic benefits will be required in settlement and the amount of the obligation can be measured reliably. Expenditure is accounted for on an accruals basis and has been classified under headings that aggregate all cost related to the category. Where costs cannot be directly attributed to particular headings they have been allocated to activities on a basis consistent with the use of resources.

Tangible fixed assets

Depreciation is provided at the following annual rates in order to write off each asset over its estimated useful life.

Computer equipment - straight line over 3 years

Taxation

The charity is exempt from tax on its charitable activities.

Fund accounting

Unrestricted funds can be used in accordance with the charitable objectives at the discretion of the trustees.

Restricted funds can only be used for particular restricted purposes within the objects of the charity. Restrictions arise when specified by the donor or when funds are raised for particular restricted purposes.

Further explanation of the nature and purpose of each fund is included in the notes to the financial statements.

2. TRUSTEES' REMUNERATION AND BENEFITS

There were no trustees' remuneration or other benefits for the year ended 30 September 2021 nor for the year ended 30 September 2020.

Trustees' expenses

There were no trustees' expenses paid for the year ended 30 September 2021 nor for the year ended 30 September 2020.

3. COMPARATIVES FOR THE STATEMENT OF FINANCIAL ACTIVITIES

	Unrestricted fund £	Restricted fund £	Total funds £
INCOME AND ENDOWMENTS FROM			
Donations and legacies	15,569	51,008	66,577
EXPENDITURE ON			
Raising funds	-	102	102
Charitable activities			
Charitable activities	-	36,416	36,416
Other	371	-	371
Total	<u>371</u>	<u>36,518</u>	<u>36,889</u>
NET INCOME	15,198	14,490	29,688
RECONCILIATION OF FUNDS			
Total funds brought forward	200	-	200
TOTAL FUNDS CARRIED FORWARD	<u><u>15,398</u></u>	<u><u>14,490</u></u>	<u><u>29,888</u></u>

4. TANGIBLE FIXED ASSETS

	Computer equipment £
COST	
Additions	3,756
DEPRECIATION	
Charge for year	1,252
NET BOOK VALUE	
At 30 September 2021	<u>2,504</u>
At 30 September 2020	<u>-</u>

Notes to the Financial Statements - continued
for the Year Ended 30 September 2021

5. DEBTORS: AMOUNTS FALLING DUE WITHIN ONE YEAR		30.9.21	30.9.20
		£	£
Other debtors		<u>5,400</u>	<u>5,200</u>
6. CREDITORS: AMOUNTS FALLING DUE WITHIN ONE YEAR		30.9.21	30.9.20
		£	£
Other creditors		<u>360</u>	<u>720</u>
7. MOVEMENT IN FUNDS			
		Net	
	At 1/10/20	movement	At 30/9/21
	£	in funds	£
Unrestricted funds			
General fund	15,398	(144)	15,254
Restricted funds			
Restricted fund	14,490	(8,703)	5,787
TOTAL FUNDS	<u>29,888</u>	<u>(8,847)</u>	<u>21,041</u>

Net movement in funds, included in the above are as follows:

	Incoming	Resources	Movement
	resources	expended	in funds
	£	£	£
Unrestricted funds			
General fund	517	(661)	(144)
Restricted funds			
Restricted fund	99,722	(108,425)	(8,703)
TOTAL FUNDS	<u>100,239</u>	<u>(109,086)</u>	<u>(8,847)</u>

7. MOVEMENT IN FUNDS - continued

Comparatives for movement in funds

	At 1/10/19 £	Net movement in funds £	At 30/9/20 £
Unrestricted funds			
General fund	200	15,198	15,398
Restricted funds			
Restricted fund	-	14,490	14,490
TOTAL FUNDS	<u>200</u>	<u>29,688</u>	<u>29,888</u>

Comparative net movement in funds, included in the above are as follows:

	Incoming resources £	Resources expended £	Movement in funds £
Unrestricted funds			
General fund	15,569	(371)	15,198
Restricted funds			
Restricted fund	51,008	(36,518)	14,490
TOTAL FUNDS	<u>66,577</u>	<u>(36,889)</u>	<u>29,688</u>

A current year 12 months and prior year 12 months combined position is as follows:

	At 1/10/19 £	Net movement in funds £	At 30/9/21 £
Unrestricted funds			
General fund	200	15,054	15,254
Restricted funds			
Restricted fund	-	5,787	5,787
TOTAL FUNDS	<u>200</u>	<u>20,841</u>	<u>21,041</u>

Notes to the Financial Statements - continued
for the Year Ended 30 September 2021

7. MOVEMENT IN FUNDS - continued

A current year 12 months and prior year 12 months combined net movement in funds, included in the above are as follows:

	Incoming resources £	Resources expended £	Movement in funds £
Unrestricted funds			
General fund	16,086	(1,032)	15,054
Restricted funds			
Restricted fund	150,730	(144,943)	5,787
TOTAL FUNDS	<u>166,816</u>	<u>(145,975)</u>	<u>20,841</u>

8. RELATED PARTY DISCLOSURES

There were no related party transactions for the year ended 30 September 2021.

The Community Hub

Detailed Statement of Financial Activities for the Year Ended 30 September 2021

	30.9.21 £	30.9.20 £
INCOME AND ENDOWMENTS		
Donations and legacies		
Donations	100,239	66,577
Total incoming resources	100,239	66,577
EXPENDITURE		
Raising donations and legacies		
Fund raising	-	102
Charitable activities		
Professional and consultancy fees	17,726	4,959
Computer & software	222	-
Rent	19,960	8,567
Food and events	43,560	21,760
Printing, postage & stationary	3,856	-
Staff training	22,071	1,130
	107,395	36,416
Support costs		
Finance		
Bank charges	79	11
Other		
Computer equipment	1,252	-
Governance costs		
Accountancy fees	360	360
Total resources expended	109,086	36,889
Net (expenditure)/income	(8,847)	29,688

This page does not form part of the statutory financial statements

THE COMMUNITY HUB

England & Wales - Charity number 1171165

Accounts



The
Community
HUB

**CREATING OPPORTUNITIES
PROVIDING SOLUTIONS**



ANNUAL REPORTS AND ACCOUNTS 2019 - 2020

**Registered Charity Number
1171165**

THE ACTIVITIES OF THE CHARITY ARE:

TO RELIEVE THE EFFECTS OF DEPRIVATION, POVERTY AND SOCIAL ISOLATION ON VULNERABLE PEOPLE, IN HACKNEY AND HARINGEY, BY ASSISTING WITH THE PROVISION OF TRAININGS, ADVICE AND RELATIONSHIP BUILDING SERVICES DESIGNED TO IMPROVE THEIR CIRCUMSTANCES OF LIFE.



CHARITABLE OBJECTS

THE ADVANCEMENT OF EDUCATION FOR THE PUBLIC BENEFIT BY:



Providing a range of training, advice and relationship building services and opportunities for vulnerable people.



The continued development of the capabilities, skills and understanding in subjects of educational value of deprived young adults.



The relief of poverty amongst persons in conditions of need, hardship and distress.



To assist vulnerable people through providing social welfare support, designed to improve their conditions of life.



The promotion of any other exclusively charitable objects and purposes such as the trustees see fit, provided that they are regarded as charitable by the law of England and Wales.

OUR MISSION:

To provide vulnerable people living in challenging circumstances the support they need to achieve and succeed.

OUR VISION:

Disengaged people are empowered with skills of resilience to combat their challenges imbuing them with hope for a better future.

STRUCTURE GOVERNANCE MANAGEMENT:

The Community Hub is a registered charity (number 1171165) and a Charitable Incorporated Organisation, established in 2017. The Trustees are responsible for governance of the organisation. Induction and training are provided for new trustees. None of the trustees have any beneficial interest in the charity. Its objects are set out in its Memorandum and Articles of Association.



6

ACCOUNTS DESCRIPTION

OUR ORGANISATION:



SUPPORT YOUNG PARENTS STRUGGLING TO PARENT CHILDREN WHO HAVE ADDITIONAL NEEDS



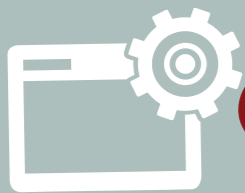
EDUCATIONAL TRAINING AND GUIDANCE PROGRAMMES FOR YOUNG PEOPLE TO CONSIDER A BROAD AND AMBITIOUS FUTURE




LINKING SOCIALLY ISOLATED, LOW-INCOME PEOPLE, THROUGH ENRICHING INDIVIDUAL WELLBEING AND RESILIENCE PROGRAMMES



RELATIONSHIP MENTORING FOR YOUNG PEOPLE; WITH EFFECTIVE SKILLS TO CULTIVATE SUCCESSFUL RELATIONSHIPS OF TRUST



SOCIAL, PHYSICAL SPORT AND MENTAL HEALTH WELLNESS PROGRAMMES FOR LONELY, SOCIALLY ISOLATED AND ELDERLY PEOPLE



BY BRINGING VULNERABLE PEOPLE TOGETHER, WE HELP THEM CREATE POSITIVE CONNECTIONS, BUILD A SHARED SENSE OF BELONGING AND TRANSFORM THEIR LIVES INTO A BRIGHTER EXPERIENCE.

ACHIEVEMENTS & PERFORMANCE

WHAT WE HAVE DELIVERED THIS YEAR:



60 MATCHED WITH MENTORS

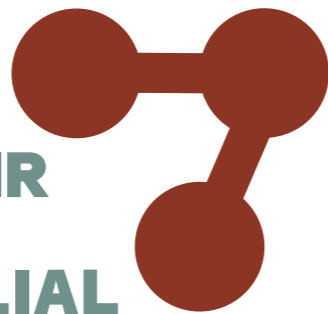
86



BENEFITTED IN MENTAL HEALTH AND HEALTHY LIVING

65

STRENGTHENED THEIR PARENTING ROLE, ESTABLISHING FAMILIAL BONDS



36 PHYSICAL HEALTH TRANSFORMED THROUGH EXERCISE WELLBEING



35 PROGRESSED INTO GAINFUL EMPLOYMENT/ FURTHER EDUCATION

105

CREATED POSITIVE CONNECTIONS AND NETWORKS THROUGH SOCIAL SUPPORT GROUPS



FINANCIAL REVIEW

PRINCIPAL FUNDING SOURCES

The charity's activities are supported by a mixture of funding streams including private donations, grants from trusts and users' contributions. The results for the period are shown in the attached financial statements.

PUBLIC BENEFIT

The Trustees confirm their compliance with the duty to have due regard to the Public Benefit guidance published by the Charity Commission when reviewing the Charity's aims and objectives and in planning future activities.

RESERVES POLICY

The trustees are working towards building reserves of at least 3 months' operating costs in order to protect services where there are uncertainties as to whether funding will continue and to ensure adequate cash flow for the organisation's needs.

RISK MANAGEMENT

The trustees have identified and reviewed the major risks to which the charity is exposed. Both manual and automated checks are regularly invoked, particularly those relating to the operations and finance of the charity. The trustees are satisfied that these systems and procedures mitigate any perceived risks. The trustees continually review the risks that the charity may be exposed to and take appropriate action as required.

GOVERNING DOCUMENT

The charity is controlled by its governing document, a deed of trust and constitutes an unincorporated charity.

CHARITY CONSTITUTION

The Community Hub is a registered charity and a charitable incorporated organisation. The Trustees are responsible for governance of the organisation. Induction and training are provided for new trustees. None of the trustees have any beneficial interest in the charity.

Approved by order of the board of trustees on 22 December 2020 and signed on its behalf by:



Mr A Klein – Trustee

INDEPENDENT EXAMINER'S REPORT TO THE TRUSTEES OF THE COMMUNITY HUB

I report to the charity trustees on my examination of the accounts of The Community Hub (the Trust) for the year ended 30 September 2020.

RESPONSIBILITIES AND BASIS OF REPORT

As the charity trustees of the Trust you are responsible for the preparation of the accounts in accordance with the requirements of the Charities Act 2011 ('the Act').

I report in respect of my examination of the Trust's accounts carried out under section 145 of the Act and in carrying out my examination I have followed all applicable Directions given by the Charity Commission under section 145(5)(b) of the Act.

INDEPENDENT EXAMINER'S STATEMENT

I have completed my examination. I confirm that no material matters have come to my attention in connection with the examination giving me cause to believe that in any material respect:

1. accounting records were not kept in respect of the Trust as required by section 130 of the Act; or
2. the accounts do not accord with those records; or
3. the accounts do not comply with the applicable requirements concerning the form and content of accounts set out in the Charities (Accounts and Reports) Regulations 2008 other than any requirement that the accounts give a true and fair view which is not a matter considered as part of an independent examination.

I have no concerns and have come across no other matters in connection with the examination to which attention should be drawn in this report in order to enable a proper understanding of the accounts to be reached.

Mr A Heller FCA
Martin+Heller
5 North End Road
London
NW11 7RJ
Date: 22 December 2020



THE COMMUNITY HUB STATEMENT OF FINANCIAL ACTIVITIES

FOR THE YEAR ENDED 30 SEPTEMBER 2020

			Year Ended	Period 1/4/18 to 30/9/19 Total Funds
	Unrestricted fund £	Restricted fund £	30/9/20 Total funds £	30/9/19 Total Funds £
Notes				
INCOME AND ENDOWMENTS FROM				
Donations and legacies	15,569	51,008	66,577	3,500
EXPENDITURE ON				
Raising funds	-	102	102	-
Charitable activities				
Charitable activities	-	36,416	36,416	10,996
Other				
Other	371	-	371	360
Total	371	36,518	36,889	11,356
NET INCOME/(EXPENDITURE)	15,198	14,490	29,688	(7,856)
RECONCILIATION OF FUNDS				
Total funds brought forward	200	-	200	8,056
TOTAL FUNDS CARRIED FORWARD	15,398	14,490	29,888	200

THE COMMUNITY HUB BALANCE SHEET

30 09 2020

	Notes	Unrestricted fund £	Restricted fund £	30.9.20 Total funds £	30.9.19 Total funds £
CURRENT ASSETS					
Debtors	4	5,200	-	5,200	-
Cash at bank		10,918	14,490	25,408	560
		16,118	14,490	30,608	560
CREDITORS					
Amounts falling due within one year	5	(720)	-	(720)	(360)
NET CURRENT ASSETS		15,398	14,490	29,888	200
TOTAL ASSETS LESS CURRENT LIABILITIES		15,398	14,490	29,888	200
NET ASSETS		15,398	14,490	29,888	200
FUNDS					
Unrestricted funds	6			15,398	200
Restricted funds				14,490	-
TOTAL FUNDS				29,888	200

The financial statements were approved by the Board of Trustees and authorised for issue on 22 December 2020 and were signed on its behalf by:



Mr A Klein - Trustee

The notes form part of these financial statements

NOTES TO THE FINANCIAL STATEMENTS FOR THE YEAR ENDED 30 SEPTEMBER 2020

1. ACCOUNTING POLICIES

BASIS OF PREPARING THE FINANCIAL STATEMENTS

The financial statements of the charity, which is a public benefit entity under FRS 102, have been prepared in accordance with the Charities SORP (FRS 102) 'Accounting and Reporting by Charities: Statement of Recommended Practice applicable to charities preparing their accounts in accordance with the Financial Reporting Standard applicable in the UK and Republic of Ireland (FRS 102) (effective 1 January 2019)', Financial Reporting Standard 102 'The Financial Reporting Standard applicable in the UK and Republic of Ireland' and the Charities Act 2011. The financial statements have been prepared under the historical cost convention.

INCOME

All income is recognised in the Statement of Financial Activities once the charity has entitlement to the funds, it is probable that the income will be received and the amount can be measured reliably.

EXPENDITURE

Liabilities are recognised as expenditure as soon as there is a legal or constructive obligation committing the charity to that expenditure, it is probable that a transfer of economic benefits will be required in settlement and the amount of the obligation can be measured reliably. Expenditure is accounted for on an accruals basis and has been classified under headings that aggregate all cost related to the category. Where costs cannot be directly attributed to particular headings they have been allocated to activities on a basis consistent with the use of resources.

TAXATION

The charity is exempt from tax on its charitable activities.

FUND ACCOUNTING

Unrestricted funds can be used in accordance with the charitable objectives at the discretion of the trustees.

Restricted funds can only be used for particular restricted purposes within the objects of the charity.

Restrictions

arise when specified by the donor or when funds are raised for particular restricted purposes.

Further explanation of the nature and purpose of each fund is included in the notes to the financial statements.

2. TRUSTEES' REMUNERATION AND BENEFITS

There were no trustees' remuneration or other benefits for the year ended 30 September 2020 nor for the period ended 30 September 2019.

Trustees' expenses

There were no trustees' expenses paid for the year ended 30 September 2020 nor for the period ended 30 September 2019.

3. COMPARATIVES FOR THE STATEMENT OF FINANCIAL ACTIVITIES

	Unrestricted fund £	Restricted fund £	Total funds £
INCOME AND ENDOWMENTS FROM			
Donations and legacies	350	3,150	3,500
EXPENDITURE ON			
Charitable activities			
Charitable activities	7,846	3,150	10,996
Other	360		360
Total	8,206	3,150	11,356
NET INCOME/(EXPENDITURE)	(7,856)		(7,856)
RECONCILIATION OF FUNDS			
Total funds brought forward	8,056		8,056
TOTAL FUNDS CARRIED FORWARD	200		200

4. DEBTORS: AMOUNTS FALLING DUE WITHIN ONE YEAR

	30.9.20	30.9.19
Other debtors	5,200	

5. CREDITORS: AMOUNTS FALLING DUE WITHIN ONE YEAR

	30.9.20	30.9.19
	£	£
Other creditors	720	360

6. MOVEMENT IN FUNDS

	At 1/10/19	movement in funds	At 30/9/20
Unrestricted funds			
General fund	200	15,198	15,398

Restricted funds

Restricted fund		14,490	14,490
TOTAL FUNDS	200	29,688	29,888

Net movement in funds, included in the above are as follows

	Incoming Resources £	Resources Expended £	Movement in funds £
Unrestricted Funds			
General Funds	15,569	(371)	15,198
Restricted Funds			
Restricted Fund	51,008	(36,518)	14,490
TOTAL FUNDS	66,577	(36,889)	29,688

Comparatives for movement in funds

	At 1/4/18 £	Net movement in funds £	At 30/9/19
Unrestricted funds			
General Fund	8,056	(7,856)	200
TOTAL FUNDS	8,056	(7,856)	200

Comparative net movement in funds, included in the above are as follows:

	Incoming resources £	Resources expended £	Movement in funds £
Unrestricted funds			
General fund	350	(8,206)	(7,856)
Restricted funds			
Restricted funds	3,150	(3,150)	
Total Funds	3,500	(11,356)	(7,856)

7. RELATED PARTY DISCLOSURES

There were no related party transactions for the year ended 30 September 2020.

Page

DETAILED STATEMENT OF FINANCIAL ACTIVITIES**FOR THE YEAR ENDED 30 SEPTEMBER 2020**

	Year Ended 30/9/20 £	Period 1/4/18 to 30/9/19 £
INCOME AND ENDOWMENTS		
Donations and legacies		
Donations	66,577	3,500
Total incoming resources	66,577	3,500
EXPENDITURE		
Raising donations and legacies		
Fund raising	102	
Charitable activities		
Professional and consultancy fees	4,959	3,456
Computer & software		600
Rent	8,567	2,200
Food and events	21,760	2,970
Printing, postage & stationary		1,530
Staff training	1,130	240
	36,416	10,996
Support costs		
Finance		
Bank charges	11	
Governance costs		
Accountancy fees	360	360
Total resources expended	36,889	11,356
Net income/(expenditure)	29,688	(7,856)

LEGAL AND ADMINISTRATIVE DETAILS

PRINCIPAL ADDRESS:

122 Kyverdale Road

London N16 6PR

TRUSTEES

Jehudah Baumgarten

Ahron Klein

Ahron Cullish

Malky Davidovitz

INDEPENDENT EXAMINER

Martin & Heller

5 North End Road

London

NW11 7RJ

