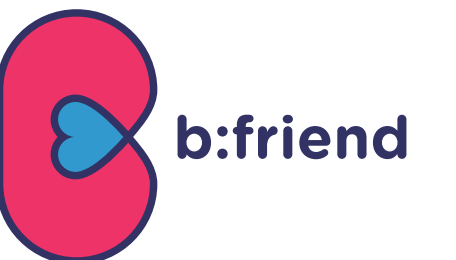
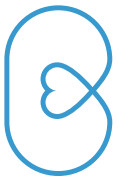




2019-2020 Annual Report





In the last 12 months,
b:friend has enabled

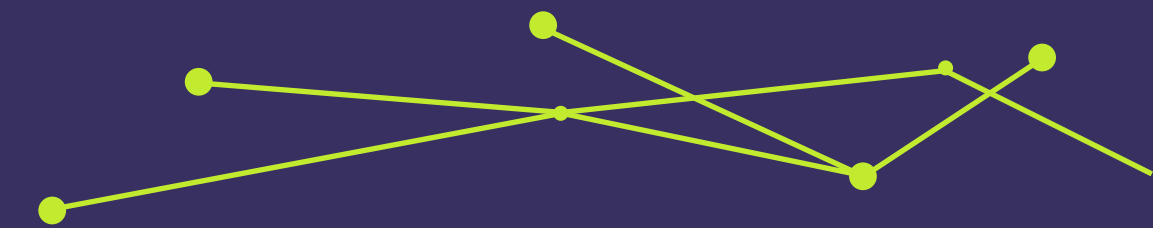
over 13,000 hours
of community connection in South Yorkshire





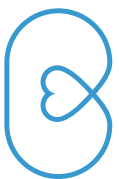
DELIVERY FIGURES

Cover the period of
January 1st 2020 — December 31st 2020

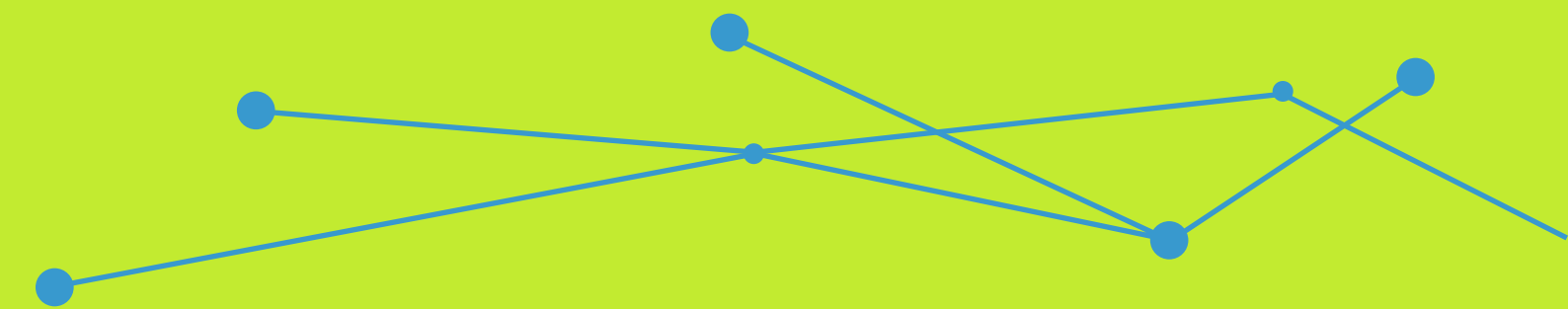


FINANCIAL FIGURES

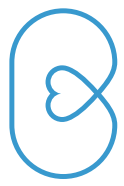
Cover our accounting year
November 1st 2019 — October 31st 2020



CONTENTS



A message from our CEO	5
Case study	7
Stakeholders	8
The problem	10
b:friend mission	12
b:friend model	14
Locations	16
Partnerships	17
1:1 befriending	18
b:friend in action	19
Being social	21
Financial Year	22
Surveys	23
A message from our chair	26



our ceo

“

Reflecting on the last year stirs a lot of emotions.
There's very little to say about the enormity of the challenge that's not already been said by others.

b:friend aims to bring people together, reducing disconnection by enabling inclusion. Overnight we had to rethink our approach.

In an instant, when lockdown began, we transformed everything we do: activities migrated online, befriending took place on the phone, our team mobilised to meet immediate need, whatever it may be. In the following months we enrolled record-numbers of volunteers (more than ever before), reached more isolated older neighbours, and delivered the most hours of social connection in our history.

And we haven't stopped since. Over the phone, at the doorstep, meeting in the park. From emergency food deliveries and well-being packs to virtual activity sessions and supportive phone calls late into the night. We've connected older neighbours with volunteer befrienders near and far, from Kimberworth to Kuwait, Neepsend to Naples, High Green to the Highlands and everywhere in between. Those connections have transformed lives.

We lost some close friends this year, witnessed the incredible courage of NHS staff and realised how much our society relies on essential workers. We can't take any of that for granted again. Let's not simply copy-and-paste what things were like before the pandemic. We've seen how it can be different, what we value most: the importance of nearby neighbours, the strength of a shared objective, the will of policymakers to just get things done.

In years to come, when we all look back at these years, our staff and volunteers can be very proud. In a time of crisis, and despite the unique challenges we all faced, they stepped forward pledging time to connect with some of the most isolated people in our society, ensuring they were not alone.

We're hopeful for a recovery phase in 2021-22. When Facetime friends can meet in-person, Social Club members can enjoy a cuppa in the same room, we can all get back to our communities.

Mike Niles | Founder & CEO | **b:friend**

”

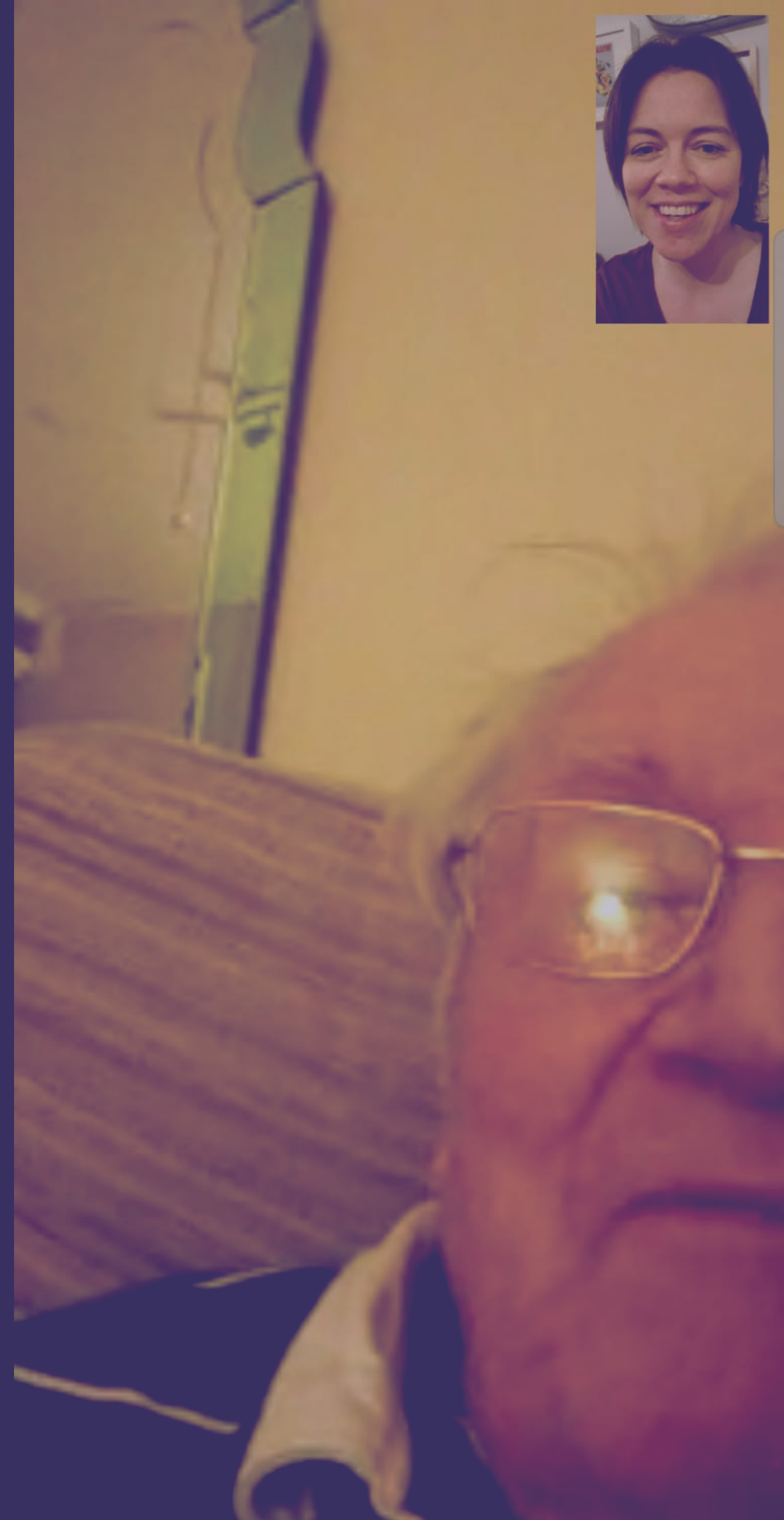


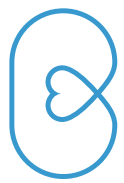
“We sat outside one day
eating fish and chips in the
rain. It makes you realise
there’s something worth
living for when you get to a
certain age.”

Brian | Sheffield

Listen to Brian on BBC Radio Sheffield

< Listen here >





“**He’s a darling**, he’s so interested in the world. We speak all about Hungary where he’s from, I’ve only driven through before it but **I can just picture the mountains and the rivers when we speak**”

CASE STUDY

Ursula | Dearne



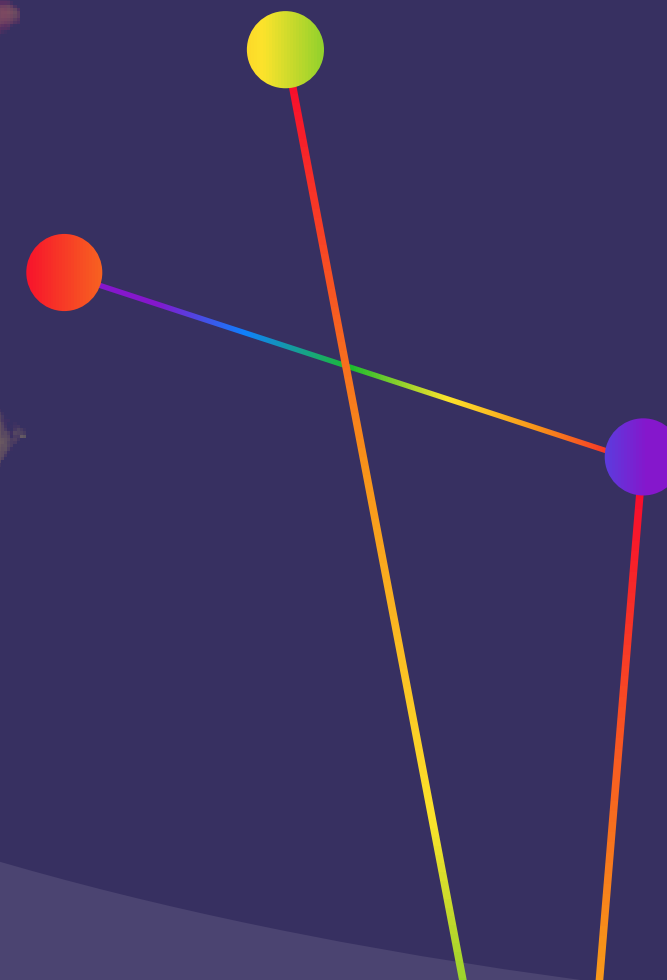
Overview

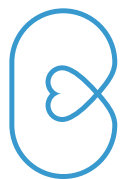
Ursula was very isolated and often called the ambulance or her doctors’ surgery for someone to speak to. We paired her with three befrienders over a period of a year, including one volunteer who can speak her native German. She loves Marcell’s calls every Monday and looks forward to meeting him.

Ursula is 97 and moved to Rotherham from Hamburg in 1949 after marrying an English soldier. She has lived alone since the passing of her husband a number of years ago and her only son (in his 70s) lives in Hull. Ursula was referred to us by the social prescribing services as she frequently called for ambulances just to have someone to speak to.

We introduced Ursula to her first befriender Sarah in November 2019. Sarah teaches science at the local college and Ursula said that she hadn’t had a conversation so engaging for a long time. During lockdown, visits haven’t been possible and Ursula really struggled as the telephone was her only means of connecting with the outside world - “**my world has ended at my garden gate**”, she told us in May 2020. We paired her with a second befriender Eli, a qualified occupational therapist, and they love chatting about Eli’s dog Ranger over the phone.

Ursula mentioned that she really missed the German magazines that her local shop used to stock for her but since they went out of business she hasn’t managed to get any. **We put out a quick Facebook request and soon had 10 magazines to send to her – these have been a great source of comfort and entertainment while she couldn’t receive visitors.** Seeing what a boost reconnecting with her mother tongue and culture gave her, we decided to pair her with a third befriender, a young man training to be a solicitor. Only this time, she would be able to converse with her befriender, as Marcell is native Hungarian with excellent German! She hadn’t spoken German for many years so was thrilled to have the opportunity to speak it again.





CLICK

Volunteers

Building a network of local befrienders spreads messaging into communities. Many have never volunteered before and most are in employment. Our flexible model allows befriending to be absorbed into already busy lifestyles.



CLICK

Integrational

We partner with schools, colleges and universities in South Yorkshire to provide younger people opportunities to volunteer with the project. Cat, from the University of Sheffield, explains how students have been engaging locally.



CLICK

Leadership

b:friend have contributed to national campaigns focused on tackling social isolation. These include Campaign to End Loneliness, The Kings Fund, Befriending Networks, talk/together, Royal Society for Public Health and Public Health England. Alison Iliff, of Public Health England- Yorkshire/Humber, explains the health benefits of b:friend.



CLICK

Partnerships

Across South Yorkshire, b:friend partner with other charity and community organisations to achieve shared goals and meet the needs of volunteers and older neighbours. Chermayne Bennett, of MHA Communities, describes how organisations working in the same geographies collaborate to meet the need.

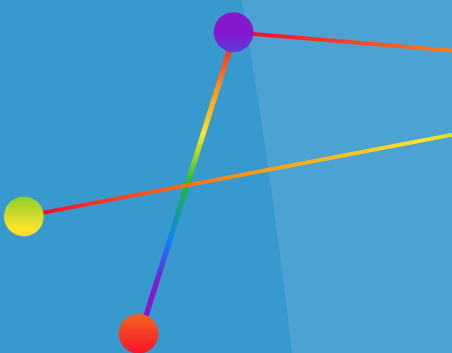


STAKEHOLDERS

**“If health is not improving,
society is not improving.**

**Good luck with
your important work”**

Prof Sir Michael Marmot



**“The measurement of success for b:friend’s intervention is that
no one that I’ve referred in to-date have ever been referred
back into my service.”**

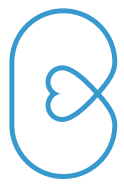
Jack Dale, Sheffield City Council Social Services

**“It’s not only about connecting people together outside their houses,
we’ve seen that particularly during the pandemic. The role of community
befrienders to support people has been particularly valuable.”**

Rupert Suckling, Director of Public Health Doncaster

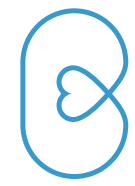
**“b:friend has found a way to tackle the long standing societal
problem of isolation and loneliness in a new and fresh way.
They have a message that resonates with communities, make
befriending a real and fun experience for everyone involved, and
have found approaches that connect with new volunteers. Their
impact is profound, and their work is never more needed.”**

Karen Smith, Prevention Programme Manager | South Yorkshire
and Bassetlaw Integrated Care System



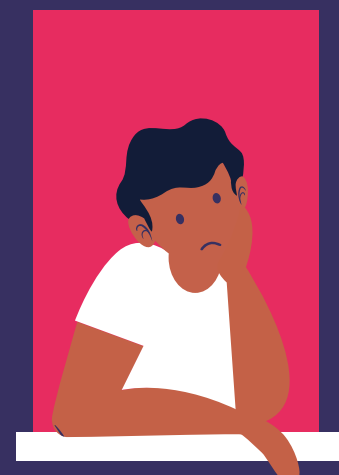
No one should have no one



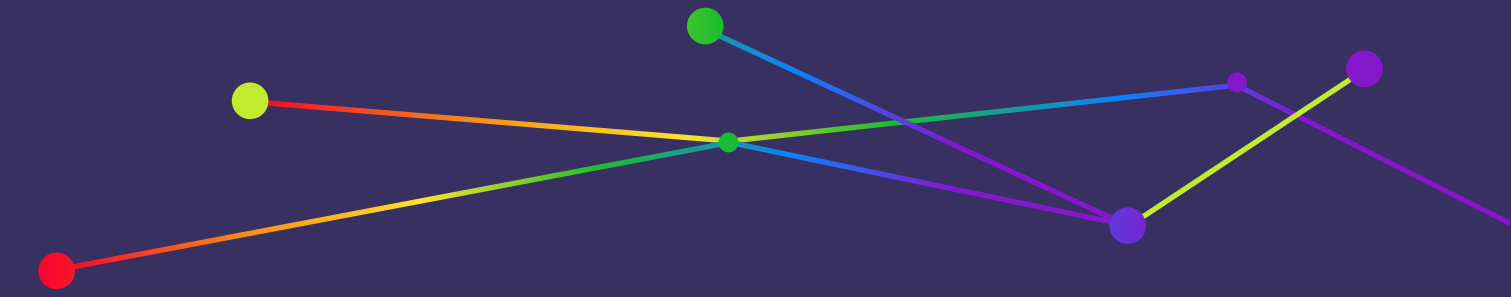


WE DON'T WANT LIKES OR RETWEETS

Photos of intergenerational friendships are heart-warming and get plenty of social media 'likes' but underlying everything we do is research, theory and social value impact that makes befriending a crucial component to social inclusion for older people. To see befriending as a 'nice to have' rather than a 'need to have' misjudges the transformative impact social connection has on all of us. It sometimes seems that ageism is the last socially acceptable prejudice. Despite being one of the most excluded groups, little is commissioned through statutory health and social care to ensure this group remain engaged with their community and independent. The community won't stand for this. Befriending once again shows that whether we're starving people of food or companionship it's the community that take a stand and support each other.



THE PROBLEM



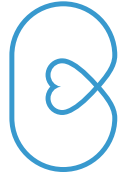
Loneliness does not discriminate and is primarily a perception of connections and value. Social isolation, arguably one of the chief causes of loneliness, can be more tangibly reduced through methodologies b:friend apply in their work.

South Yorkshire is home to some of the most socially isolated older neighbours in England.

Statistically and anecdotally we're acutely aware of the drastic need for preventative support for isolated older neighbours. **Unless someone receives a diagnosis there is no support available** to socially isolated individuals locally. In many instances empirical research demonstrates that no intervention, and subsequent periods of loneliness, lead to **health and well-being deterioration** and expensive reactive care packages.

Research shows that medium to long periods of social isolation have a direct influence on a diagnosis of dementia, depression, coronary disease, diabetes and readmission to hospital. **Extended periods of loneliness can have the same impact on premature mortality as smoking 15 cigarettes a day.**

With the older population set to rise by approximately 22% by the year 2027, this issue isn't going to disappear without preventative action.



ORGANISATION

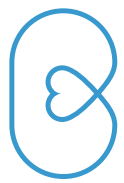
b:friend is a Yorkshire charity, founded in January 2017, that pairs volunteer befrienders with socially isolated older neighbours in the community with the aim of reducing social isolation and re-engaging individuals with the people and places around them. At the core of our model people in the community are taking the lead to make real improvements for local people. By popping in once a week for a cuppa and a chat, 1:1 befrienders provide companionship to people that may not speak to another person all week or longer. This low-level preventative measure is vital early action transforming the lives of socially isolated older neighbours. All befrienders received an Enhanced DBS background check, training and two accompanied visits to their assigned older neighbour with a member of the b:friend team.

VALUES

No one should have no one. We believe in facilitating meaningful community connections to transform an individual's value of themselves, reduce their feeling of loneliness and enable them to build resilience in later life.

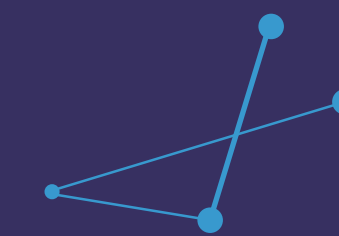
OUR THOUGHTS

Befriending is not a new concept, and we've never claimed to have cornered the market when it comes to reducing social isolation, but we've been overwhelmed by the uptake of this project in South Yorkshire. On a daily basis, older neighbours and befrienders alike approach us to explain how this project has completely changed their lives. We were sceptical at first. We know it has impact but 'life changing' is something we weren't initially willing to accept given the once-a-week nature of the volunteering. But it changes a psyche: from monotonous solitude to knowing that someone cares, someone visits and they do it without recompense because they want to.



b:friend mission

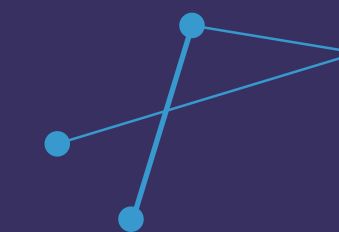
WHAT WE EXIST FOR



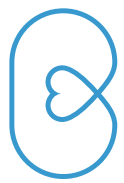
Reducing social isolation for older people and younger people alike by creating opportunities for community togetherness



Improving well-being through local connections to ensure older people have the confidence, self-worth and option to reconnect with the people and places around them



Bringing people together to dilute division created by age, heritage, digital skills and attitudinal divides



How many
people in their
80's
do you know
that
can street dance
to Kanye

When was the last time
you saw a 90 year old...

partake
in a poetry slam

mix Bond-style mocktails

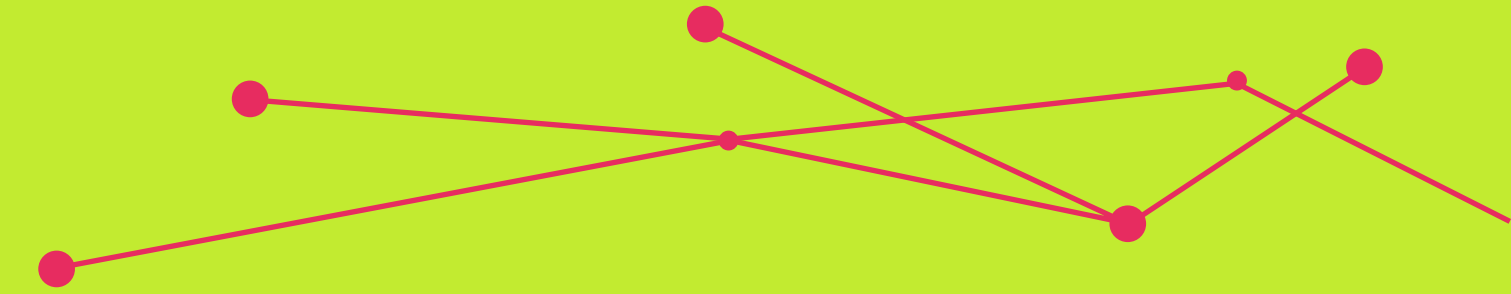
take on all challengers in a fiercely
competitive boat race





This is community support in its most authentic form. Volunteer befrienders pledge to visit a socially isolated older neighbour near them for one hour per week for a cuppa and a chat. On the way back from work, the shops, dropping the kids at school – whenever is convenient for both parties, a befriender will spend an hour just chatting, listening and supporting someone that otherwise may have no one.

1:1 Befriending

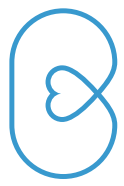


Social Clubs

Each group activity is different... and they're certainly not boring. From performing songs from Broadway, designing tattoos, making bird boxes, chocolate tasting sessions and jiving to Bollywood-inspired music... members are exploring new horizons and getting out of their comfort zone each week.

The Five Ways to Well-being form a clear framework with which b:friend design all group activities and the model will be a vital factor in the co-design process to ensure each group achieves all five areas in most of their activities. Our Social Clubs ensure attendees are: connected to others through conversation and activity; active through physically engaged sessions; continue to learn through engaging talks, discuss topics of the day and take note of others around them; while giving time, support and attention to others.





“**b:friend** has saved my life.
I was ready to give up when I
lost my husband but **now I**
have something to look
forward too.”

Kath

Watch Kath talk about her experiences.

< Watch here >



“When I have someone with me, some company I relax. When I don’t see people I feel on edge.”

Mary | South Yorkshire

locations

WHERE WE WORK

b:friend launched as a charity in **Doncaster, South Yorkshire**, in January 2017 and have become a key provider of equitable 1:1 and peer-to-peer befriending support for socially isolated older neighbours in the Borough.

Localities across **South Yorkshire** are **areas of highest risk nationally** when it comes to social isolation of older people. With a large proportion of people aged 80 and over, many living in social housing and facing income deprivation – there’s high prevalence of the biggest determinants of loneliness.

In January 2019, our project expanded adding befriending provision in Sheffield, Rotherham and Barnsley to add to existing work in Doncaster and the Dearne area. It is available to any older neighbour, identifying as socially isolated, and we’ve created pairings throughout the area from **Bolton to Bawtry, Woodhouse to Wombwell, Mexborough to Moorends, Thurnscoe to Thorne** - the length and breadth of the region.

Social Clubs have been established in areas identified as ‘high risk’ based on statistics and existing provision. We currently have **weekly Clubs in: Mexborough, Thorne, Denaby, Rossington, Armthorpe, Balby, Lowedges, Thurnscoe, Bolton upon Dearne, Longley and Wheatley Hills.**

Our model offers a unique approach to volunteering and is targeted at supporting the people at highest risk of isolation. Volunteers commit to an hour a week, in their local area, placing value on conversation and companionship. We achieve maximum impact by focusing our attention at those most acutely facing loneliness, including:

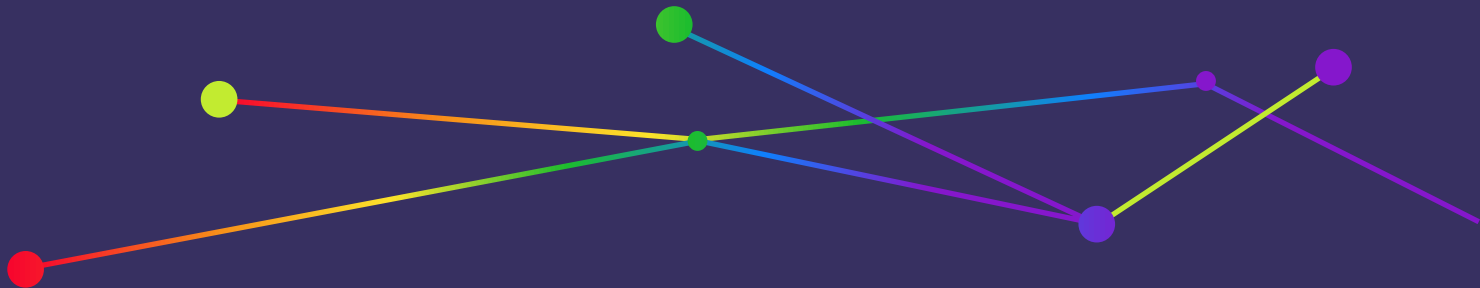
People who live alone - 93% of the older people we work with live alone; the ‘oldest old’ – 66% of older neighbours we identify are over 80; women – 72% of older neighbours we support are women; people who live in social or housing association homes – 59% of older neighbours we work with are social tenants.

Our awesome partners



b:friend PARTNERSHIPS

Introducing our collaborations



South Yorkshire Housing Association (Social Prescribing)

GP Federation (association for GP Practices)

Doncaster IAPT NHS

Club Doncaster Foundation

St Leger Homes / Leger Bus / NDDT

Health and Social Care Forum (VCSE orgs)

Public Health England / PH Doncaster

DMBC Well-being teams (locality based)

NHS / SYB Integrated Care System

Local MPs / Counsellors

South Yorkshire Fire & Rescue

South Yorkshire Police

Yorkshire Air Ambulance

Age UK Doncaster / MHA

Barnsley Council, Dearne Area Team

Voluntary Action Sheffield

Dearne Development Fund

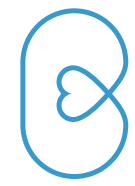
Voluntary Action Doncaster

Barnsley CVS

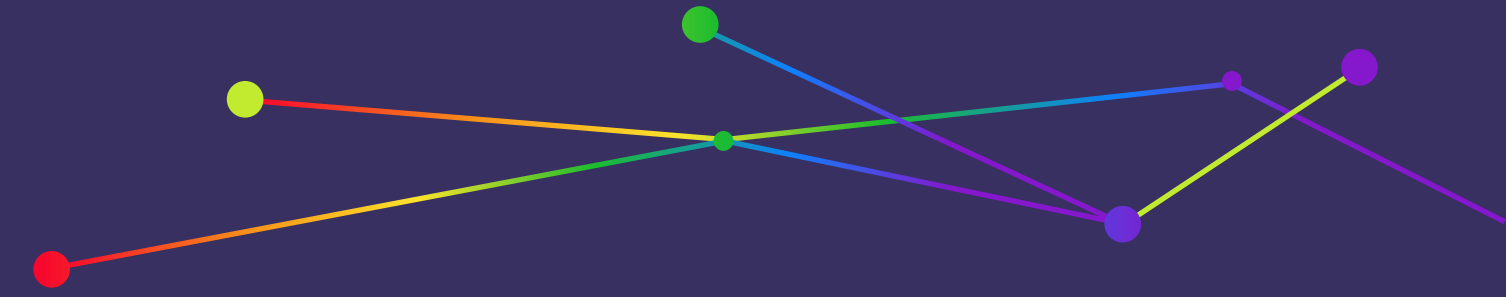


Special mentions go to:

The Cares Family, Alex Smith, EVA Women's Aid, Richinda Taylor, Morrisons Doncaster, Tehsin Khan, The Good Things Foundation, Eshranie Toban, Journey Education, A Million Realities, The Packard Family and our incredible volunteers.



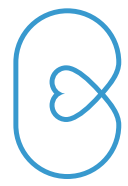
1:1 BEFRIENDING



Morning! How was your dad last night? It was a long day so i hope that he wasn't too tired!

He was as happy as i've seen him in a long time. He really enjoyed it. Thankyou so much for looking after him

That's lovely to hear! It was a fantastic day!



b:friend in action

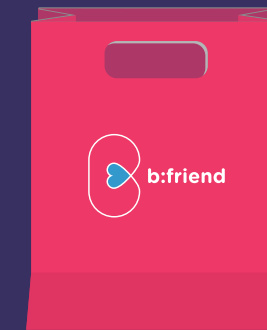
in 2020



13,000+ hours
of 1:1 befriender interactions



620 NEW befrienders
delivered across South Yorkshire
...that's at least 2,480 cuppas!!



1,360 social packs
telephoning or a visit for an outdoor chat each week
... equates to four deliveries every day

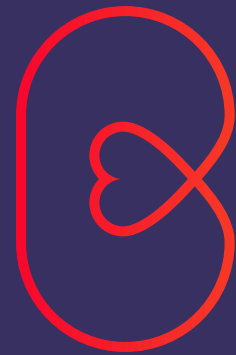


384 social club sessions
held - both in-person and on telephone conference calls



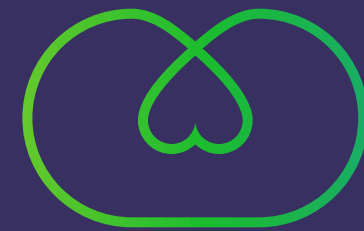
80+ facebook live
sessions have taken place

Befrienders stating it's changed their lives **with many themselves experiencing bereavement, anxiety, redundancy, isolation.**



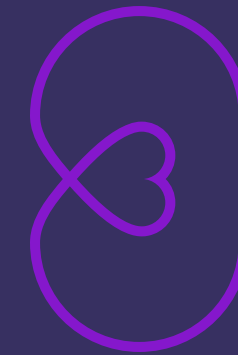
“If it wasn’t for Maxine and my son ringing every week I reckon you’d find me in the loony bin by now...she always cheers me up when she rings, I can get very low”

John | Sheffield
Maxine | Volunteer



“She’s been so helpful to me over the last few months, I’ve had a lot going off and she’s helped me by just talking through it all, she’s so calm. I don’t know what I would have done without her. I’ve become very close with her parents too, we’re always passing messages between the 4 of us, I love hearing what they’re up to and I tell them my stories of being in the air force. Thank you so much, you’ve made a great match”

June | South Yorkshire
Anisha | Volunteer



“She’s a lovely, very very caring young lady - we have the world in common. She’s rejuvenated me in ways I wouldn’t have imagined too - we both love cooking but I couldn’t be bothered cooking for just me, but now I do because we talk about what we’ve made on the phone. I tell her ‘I love you, you’re fantastic, and your parents should be very proud of you”

Ruth | South Yorkshire
Ellie | Volunteer

24%
attrition

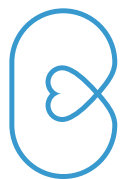
of pairings end following final supervised visit (0-6 months)

52%
of befriending

pairings exceed 12-months of connection

92%
of older neighbours

that have a befriending pairing are satisfied with project



WHAT DO WE GET UP TO AT **VIRTUAL** SOCIAL CLUB?

Dancing – all styles, from the Charleston to Rumba!

Reflexology – yoga & Pilates

Christmas Day (2019) big party

Armchair Travels – cultural trips to India, Mexico,

France & much more...

b:friend Breakfast Club

Scams session featuring NatWest

Creative writing & Poetry Slam

Mardi Gras & festival fun

Bird feeders for local trees (photo)

Guest speakers inc. South Yorkshire Fire & Rescue,
Doncaster Museum, local history experts & members
themselves

Day-trips: garden centres, seaside & the theatre

Retro Games session

No bake sessions (...cheesecake was a favourite)

Intergenerational activities (local schools & NCS)

Graffiti art design sessions (...using water based paint)

Screen printing & decoupage

History Club, with Heritage Doncaster



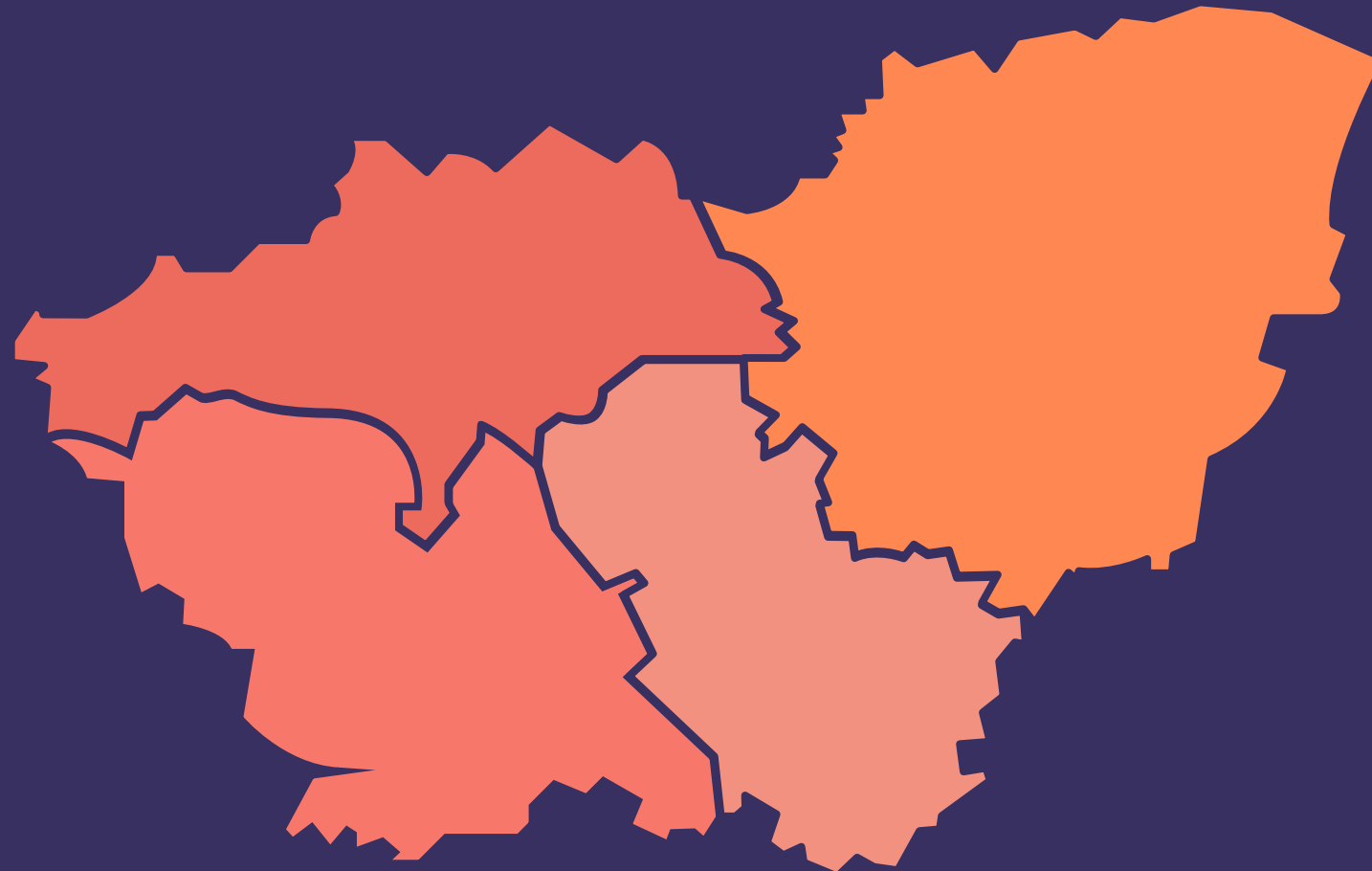


FY 2019-2020

Incoming Resources

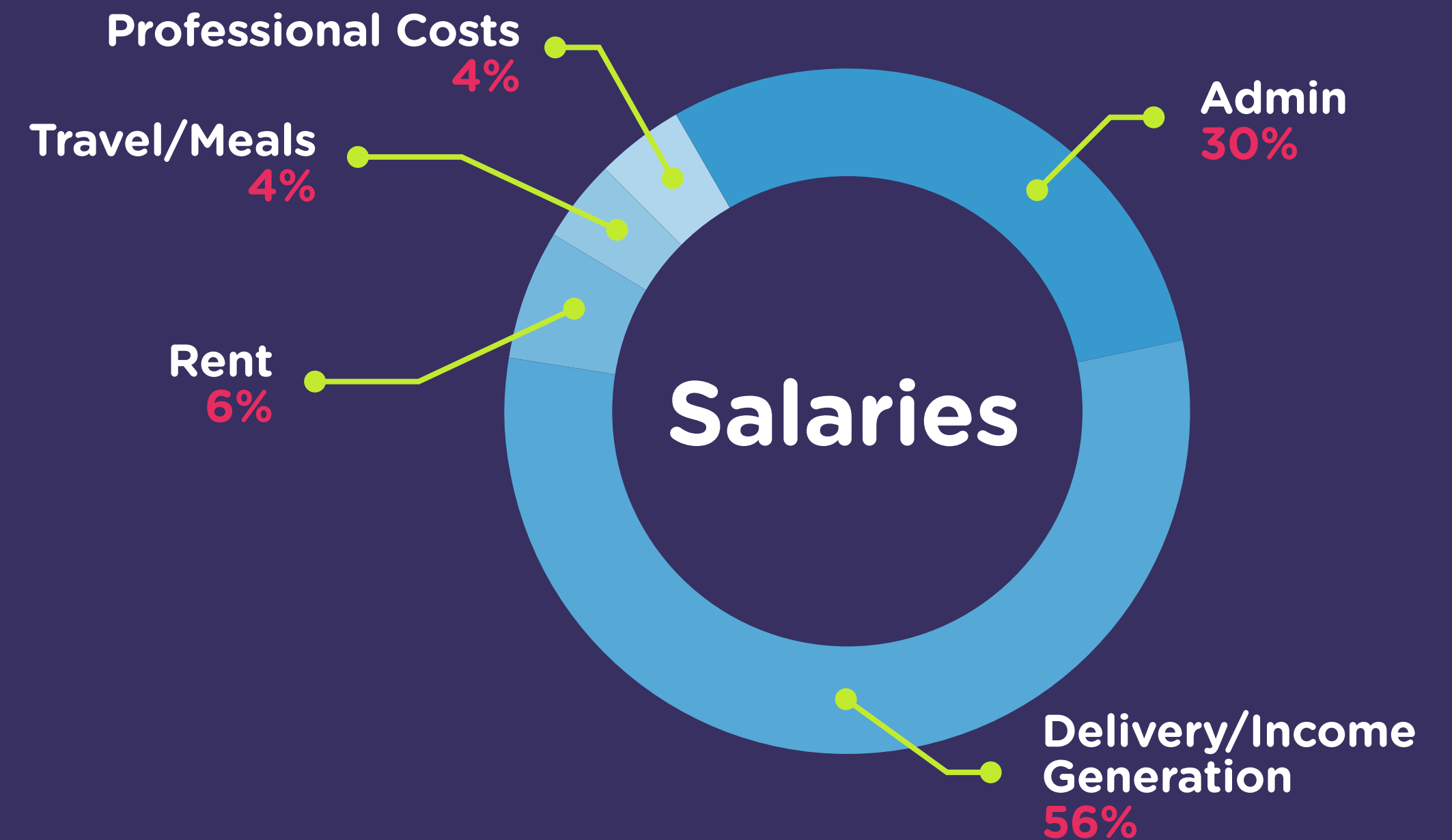
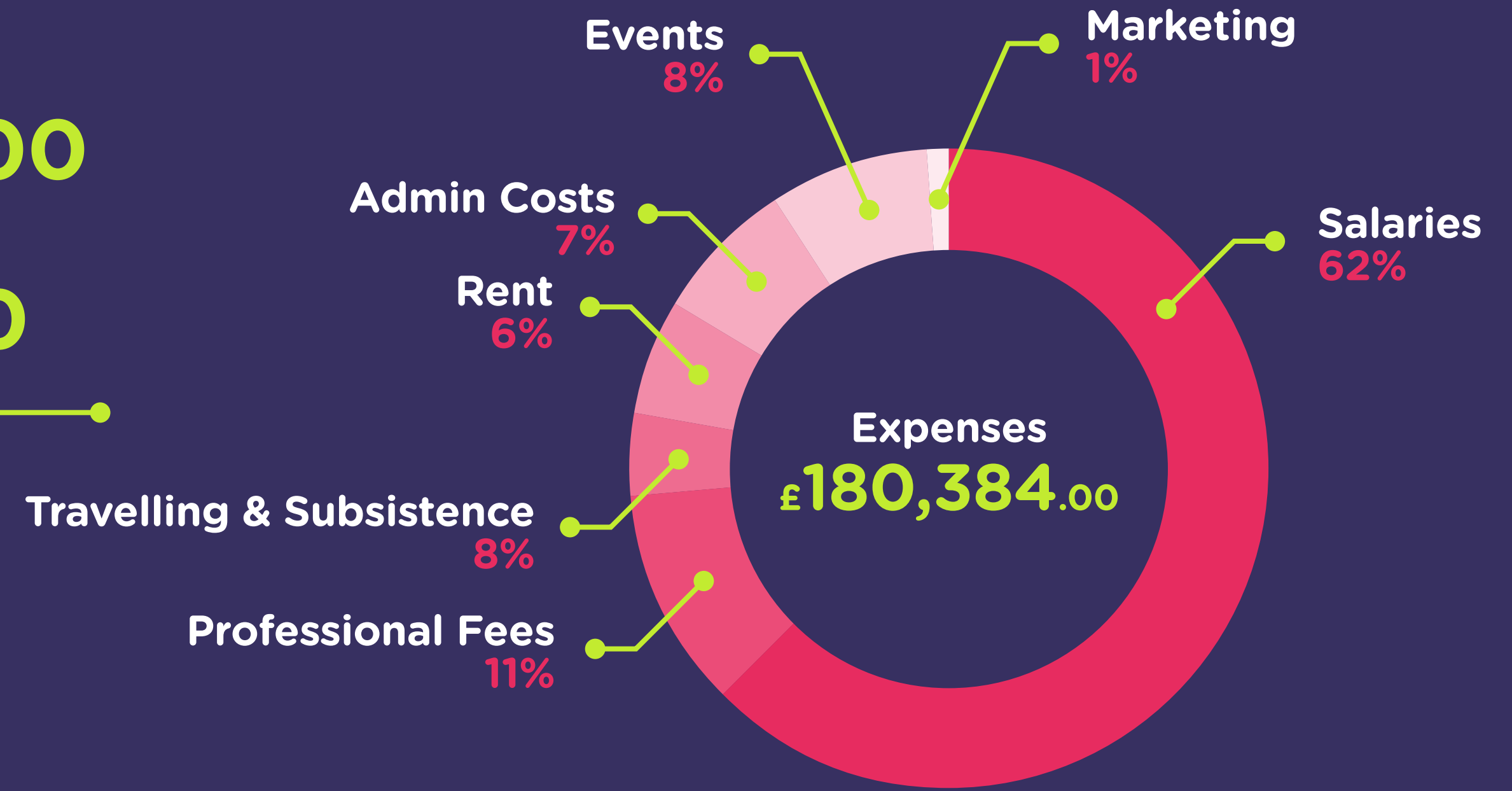
Restricted **£243,674.00**

Unrestricted **£10,812.00**



It costs

£408.00 per older member
to provide ongoing support



BENEFICIARY SURVEYS & PROJECT EVALUATION

The statements (scored 1-5)

I've been feeling optimistic about the future

I've been feeling useful

I've been feeling relaxed

I've been feeling interested in other people

I've had energy to spare

How many other agencies do you use? (Deflator question)

I've been dealing with problems well

I've been thinking clearly

I've been feeling good about myself

I've been feeling close to other people

I've been feeling confident

I've been able to make my mind up about things

I've been feeling loved

I've been interested in new things

I've been feeling cheerful

How many GP visits have you had in the last month?

How many of these GP visits (if any) have been with the sole purpose of wanting to talk to someone?

How many A&E visits in the last month?

How many of these A&E visits (if any) have been with the sole purpose of wanting to talk to someone?

How many times have you pressed your personal alarm in the last month?

How many of these personal alarm presses (if any) have been with the sole purpose of wanting to talk to someone?

How much physical exercise have you done in the last month (minutes)?

Average change (Baseline > 3 month)

+6.4 points

Older neighbours surveyed 3-months after being paired with a befriender **ALL** recorded higher overall scores when asked the same questions they answered at baseline.

The neighbour displaying the greatest positive change recorded answers 21 points higher than they responded at baseline. Others however scored -5 which suggests not all neighbours benefited the same from befriending intervention.

The average change is the median point difference registered by beneficiaries before, and three months following, intervention.

Data January 2019 - December 2019

Average change (Baseline > 6 month)

+8.7 points

Older neighbours surveyed 6-months after paired **ALL** recorded higher overall scores when asked the same questions at baseline & three months.

Social impact deflators

Below are the definitions of deflator factors for the table on the next page:

Leakage: How much of an outcome might have delivered an impact outside of the area you intended.

Dead-weight: How much of the outcome might have been achieved without intervention.

Attribution: What proportion of an outcome might be attributed to others because their activity contributed to it.

Drop-off: What proportion of the outcome will diminish over time.

Displacement: How much of the outcome has displaced other outcomes.

The Social Value is
£10.12
for every £1 spent

Figure is based on 12-month period



Carbon footprint

Total carbon footprint 2020/2021 = 17.08 tonnes of CO₂e
Calculation to offset = £232.20 inc. 20% VAT invested in tree planting scheme in Yorkshire and Humber.
This enabled us to achieve net zero annual carbon emissions

Privately paid by CEO

Our environmental pledge (all currently active)

- ✓ De-carbonisation strategies including: digitising all activity, no paper documentation
- ✓ Paperless office
- ✓ Only use contractors with eco-friendly approach (including Amazon following their launch of the Climate Pledge) and those committed to net-zero emissions by 2040
- ✓ Credible, quantifiable and local offset



Inclusivity

Honest in our vision to be an inclusive organisation. We will never discriminate against any persons and pledge to deliver benefit to all people in the communities we support.

Our inclusivity pledge (all currently active)

- ✓ Regularly review representation on staff and Board teams
- ✓ Ensure all projects are adapted to be accessible to all individuals
- ✓ Always review volunteer and beneficiary demographics and pro-actively attempt to reach under-represented communities
- ✓ Regularly improve our knowledge of inclusive approaches (latest all staff training Nov-20 and Jan-21)



Staff salaries

All staff are paid **above** the UK Living Wage (not accredited)

Our living wage pledge (all currently active)

- ✓ Always review salaries annually
- ✓ Always pay UK Living Wage (outside London)
- ✓ Always endeavour to increase salary annually in-line with inflation



Equity

We will never charge a fee to access support.

Our equity pledge (all currently active)

- ✓ Regularly review representation on staff and Board teams
- ✓ Our community befriending is, and will always be free
- ✓ Finance will never be a barrier to entry
- ✓ Charity sustainability will never be achieved by financially benefiting from the most vulnerable

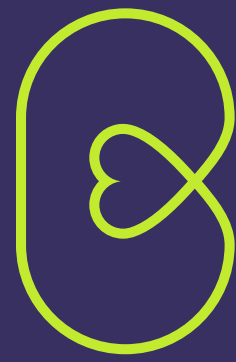


Mental health

All staff and volunteers can access free CBT counselling

Our mental health pledge (all currently active)

- ✓ Offer no questions access to 24/7 counselling service
- ✓ In-person or telephone access 365 days of the year
- ✓ Always anonymous, always free
- ✓ Additional training opportunities sourced



“It’s the best thing I’ve ever done, it’s surprising what you get off your chest. It’s so nice to have someone that isn’t my family to talk to, she’s always there to listen to me, she’s beautiful”

Tony | Rachel – Volunteer



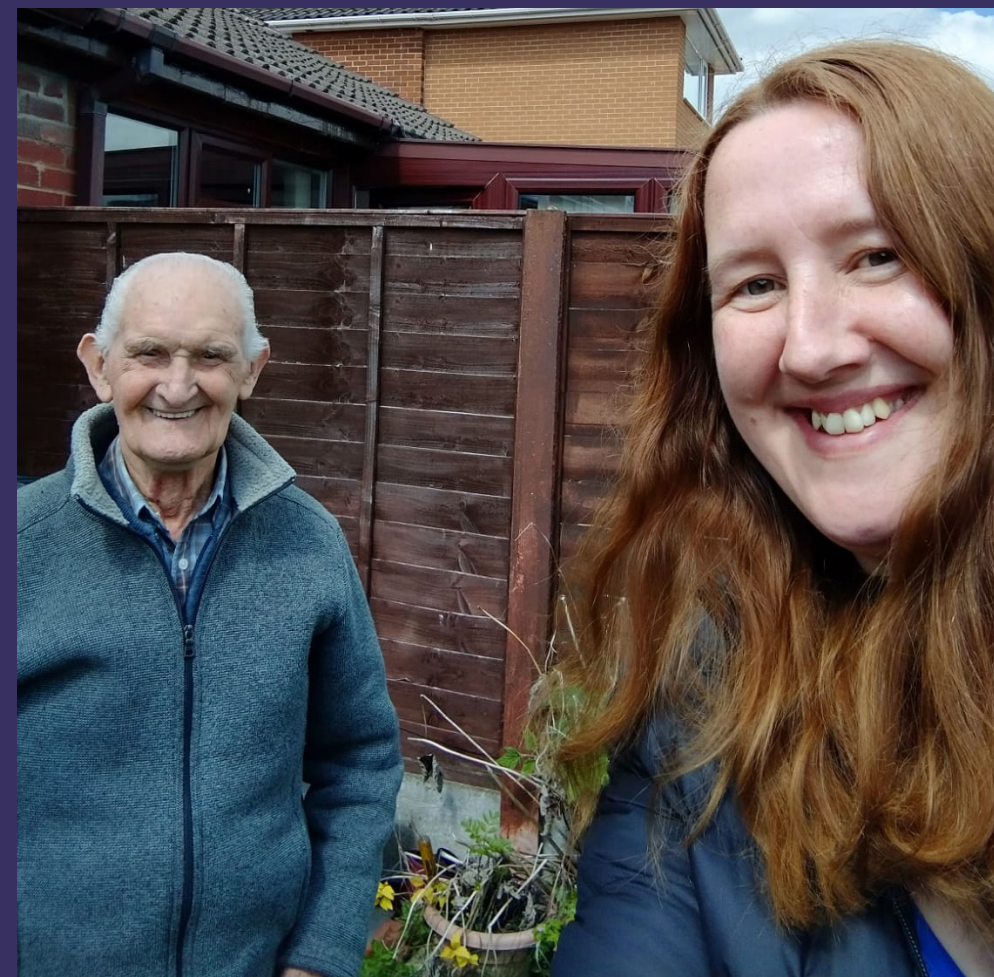
“As things are now, getting a knock at your door and getting a present ...it was lovely, it made my day”

June | Lowedges Social Club Delivery



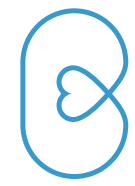
“We had a lovely long chat, it’s odd but despite the difference in our ages and she being a northerner and me being from “down south”, we seem to have a lot in common.”

Chris | Pat – Volunteer



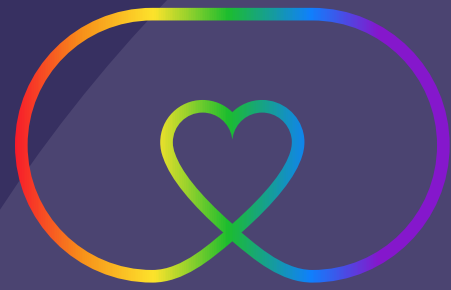
“I really needed you [to ring] today, I just felt so desperate, lockdown has really been getting to me these last few weeks”

Patricia



“Everything is different today”

Daniel Burton | Interim-Chair | b:friend



our chair...

“

This past year has demonstrated the debilitating impact that loneliness can have on the mental and physical well-being of people of all ages. The pandemic helped us realise and appreciate that which we often take for granted; our safety, our freedoms, and our relationships. The sad truth is that for many older neighbours in our communities, national lockdown felt like just another day / month / year; which is both incredibly frustrating and motivating.

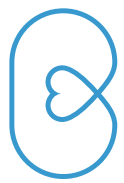
This year, we’ve supported people gripped by deep grief and overwhelming anxiety. We’ve observed tears of relief and enjoyed reaffirming conversations. Our volunteers have been surrogate family; our staff have counselled people through suicidal thoughts. We’ve been there at the end of people’s lives, when nobody else was.

While 2020 was unquestionably a challenge – for us all – we’ve learned some incredible lessons that have transformed how our project operates. We’ve adapted to meet demand, evolved our model to be effective in new circumstances and established new operational practices that merge three-years of experience with one-year of complex community action. All of which will optimise our project going forward.

On 13 March 2020, the small but mighty b:friend staff team spearheaded a huge change in how we operate; rapidly adapting and scaling our support programmes. Whilst the rest of the UK was urged to stay at home, staff and volunteers went above and beyond; working tirelessly to source, pack and deliver parcels of essentials for the most vulnerable older neighbours in our communities. Over the past year b:friend has delivered 1,500 bundles, facilitated more than 13,000 hours of befriender phone calls (that’s 36 hours of calls per day!), and created and maintained 620 active pairings. On behalf of the Board of Trustees, I want to thank the b:friend team, our volunteers, our supporters and funders, and our CEO, Mike; this would not have been possible without your individual and collective contribution.

....continue >

”



“

...our chair

As a Board, we've sought to ensure that the charity represents the amazing people we support and that support us. We've involved the voices of staff, volunteers and beneficiaries at Board level to influence decision-making. We have strong governance practises, closely managing and reporting on key metrics and reviewing performance and finances in line with project objectives and growth ambitions. We've invested in our people, our processes, and our infrastructure in order to maintain the longevity and quality of our service delivery.

At a time when our older population are arguably more isolated than any time in history, befriending could not be more critical to community recovery. But it won't be a continuation of what came before Coronavirus.

I am excited as b:friend enters a new era. As a board and staff team, we've collaborated with our partners, funders and supporters, and committed ourselves to ambitious targets, positioning ourselves locally and nationally to achieve even greater impact through scaled service delivery. We have a clear vision for how we can impact the issue we're working on; by focussing on local community projects to ensure that we have the greatest impact on overcoming social isolation and loneliness at a grassroots level.

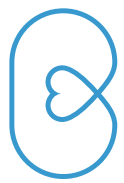
My job in the coming year is to build on our strong platform to help b:friend to bring even more older and younger neighbours together, to continue to innovate, and to make sure we are living up to our founding mission: to facilitate meaningful community connection, transforming an individual's self value, reduce their isolation and enable them to build resilience in later life - no one should have no one.

On top of the building next-door to the b:friend office in Sheffield reads a neon sign saying "everything is different today". The artwork, by Sheffield-based artist Tim Etchells, epitomises the year 2020 and the work of our charity moving forward.

Daniel Burton | Interim-Chair | **b:friend**

”





our team

Karen



Jenny



Maryanne



Hayley



Mike



Rayella



Our trustee & advisory board

Daniel Burton (Chair)

Lucy Cole

Matthew Cutmore

Geraint Evans

Melissa Beckett

Louis Stokes





In the last 12 months,
b:friend has enabled

over 13,000 hours
of community connection in South Yorkshire





**We're all
neighbours
lets b:friend!**

@ info@letsbfriend.org.uk

☎ 07523 698 530

f facebook.com/brienders



b:friend

B:FRIEND
(A charitable incorporated organisation limited by guarantee)

**REPORT AND FINANCIAL STATEMENTS
FOR THE YEAR ENDED 31 OCTOBER 2020**

CHARITY NUMBER 1171148

COMPANY NUMBER CE009648

B:FRIEND

CONTENTS

	Page
MANAGEMENT COMMITTEE REPORT	2-5
INDEPENDENT EXAMINER'S REPORT	6
STATEMENT OF FINANCIAL ACTIVITIES	7
BALANCE SHEET	8
NOTES TO THE ACCOUNTS	9-15

**MANAGEMENT COMMITTEE REPORT FOR THE PERIOD
ENDED 31 OCTOBER 2020**

The Management Committee presents its report and accounts for the year ended 31 October 2020.

Charity information
Management Committee

Daniel Burton	Acting Chairperson (appointed)/Treasurer
Louis Stokes	Non-Executive member
Lucy Cole	Non-Executive member
Geraint Evans	Non-Executive member
Melissa Beckett	Non-Executive member

Charity Registration number	1171148
-----------------------------	---------

Charity registered office	Archway Doncaster Road High Melton Doncaster South Yorkshire DN5 7SU
---------------------------	---

Operational address	Unit 315 The Workstation 15 Paternoster Row Sheffield S1 2BX
---------------------	--

Secretary	Matthew Cutmore
-----------	-----------------

Independent examiner	Smith Craven Chartered Accountants Sidings House Sidings Court Doncaster
----------------------	--

Bankers	Santander UK Plc Doncaster
---------	-------------------------------

MANAGEMENT COMMITTEE REPORT FOR THE YEAR ENDED 31 OCTOBER 2020

Structure, governance and management

Governing Document

The organisation is a charitable incorporated organisation formed on 17 January 2017 and registered as a charity.

The charity was established under a Constitution which establishes the objects and powers of the charitable company and is governed under its Constitution.

In the event of the charity being wound up members are required to contribute an amount not exceeding £1.

Recruitment and Appointment of Management Committee

The Trustees of the charity for the purposes of charity law and under the charity's Constitution are known as members of the Management Committee. Under the requirements of the Constitution the members of the Management Committee are elected to serve for a period of three years after which they must be re-elected at the next Annual General Meeting.

Objectives and Activities

The objectives of the charity are to promote social inclusion amongst elderly persons, in particular, but not exclusive to over 65's, resident in Doncaster and the surrounding areas who are excluded by society, by provision of:

- Befriending services through weekly outreach to individuals.

Such other ways from time to time as the trustees see fit in furtherance with said objects. B:Friend is a not-for-profit organisation.

B:Friend pairs volunteer befrienders with socially isolated older neighbours in the community with the aim of reducing loneliness by reengaging with people and places around them. Our key activities are 1:1 befriending pairings, visiting once a week for a "cuppa" and a chat. B:Friend also provides two hour social clubs, held in various locations that offer peer support through a range of physically and mentally stimulating sessions.

All activities undertaken by the charity are to benefit people in the community, be they volunteers or older neighbours, and all remain equitable with services free at the point of delivery.

Trustees ensure all activities are in accordance with the charity objects outlined in the constitution and are for the public benefit.

MANAGEMENT COMMITTEE REPORT FOR THE YEAR ENDED 31 OCTOBER 2020

Achievements and performance

- In the reporting period, the charity has created over 140 x 1:1 befriending pairings across Doncaster, Barnsley, Sheffield and Rotherham. In addition to this our team has supported and managed an additional 120 x 1:1 befriending pairings already in existence.
- Facilitated approximately 960 hours of Social Club activity across the region with weekly activity, peer support and entertainment.
- Collaborated with other charity and community groups, along with statutory health and social care colleagues, on wider social challenges faced across towns and cities we work in.
- A community event hosted by the charity was featured on BBC Breakfast national news and other media coverage includes regional radio and print media.

Financial Review

Principal Funding Sources

B:Friend was grateful to receive funding from: The National Lottery Community Fund, the Department for Culture, Media and Sport, South Yorkshire Fire and Rescue, Barnsley Metropolitan Borough Council, Doncaster Metropolitan Borough Council and Public Health Doncaster during this period. We also received continued financial and skills support from partners including South Yorkshires Community Foundation, E-On Tween Bridge, Voluntary Action Rotherham, Coca Cola, Rotary Club of St Georges, Doncaster Medical Ball and the Santander Foundation.

Reserve Policy

As a policy, it has always been felt prudent to maintain reserves at a level whereby at least three months expenditure could be met in the event of a significant loss of funding.

MANAGEMENT COMMITTEE REPORT FOR THE YEAR ENDED 31 OCTOBER 2020

Statement of Management Committee's Responsibilities

Charity law requires the Management Committee to prepare financial statements for each financial period which give a true and fair view of the state of the affairs of the CIO as at the balance sheet date and of its incoming resources and application of resources, including income and expenditure, for the financial period. In preparing those financial statements, the Management Committee should follow best practice and:

- select suitable accounting policies and then apply them consistently
- make judgements and estimates that are reasonable and prudent; and
- prepare the financial statements on the going concern basis unless it is inappropriate to assume that the company will continue on that basis.

The Management Committee is responsible for maintaining proper accounting records which disclose with reasonable accuracy at any time the financial position of the charitable company and to enable them to ensure that the financial statements comply with the Companies Act 2006 and Charities SORP (FRS102). The Management Committee is also responsible for safeguarding the assets of the charitable company and hence for taking reasonable steps for the prevention and detection of fraud and other irregularities.

Members of the Management Committee

Members of the Management Committee, who are trustees for the purpose of charity law, who served during the year and up to the date of this report are set out on page 2.

In accordance with charities law, as the CIO's trustees, we certify that:

- so far as we are aware, there is no relevant accounting information of which the charity's independent examiners are unaware; and
- as the trustees of the CIO, we have taken all the steps that we ought to have taken in order to make ourselves aware of any relevant accounting information and to establish that the charity's independent examiners are aware of that information.

Approval

This report was approved by the Management Committee on 25/08/2021 and signed on its behalf by:

Daniel Burton



Chairperson

B:FRIEND

INDEPENDENT EXAMINER'S REPORT ON THE ACCOUNTS

Report to the trustees of B:Friend on the accounts for the period ended 31 October 2020 set out on pages 7 to 15

Respective responsibilities of trustees and examiner

The trustees are responsible for the preparation of the accounts in accordance with the Charities Act 2011 ('the Act').

The trustees consider that an audit is not required for this period under section 144 of the Act, and that an independent examination is needed.

It is my responsibility to:

- examine the accounts under section 145 of the Act;
- to follow the procedures laid down in the General Directions given by the Charity Commission under section 145(5)(b) of the Act, and
- to state whether particular matters have come to my attention.

Basis of independent examiner's statement

The charity's gross income exceeded £250,000 and I am qualified to undertake the examination by being a qualified member of Institute of Chartered Accountants in England and Wales (ICAEW).

My examination was carried out in accordance with General Directions given by the Charity Commission. An examination includes a review of the accounting records kept by the charity and a comparison of the accounts presented with those records. It also includes consideration of any unusual items or disclosures in the accounts, and seeking of explanations from the trustees concerning any such matters. The procedures undertaken do not provide all the evidence that would be required in an audit, and consequently no opinion is given as to whether the accounts present a 'true and fair view' and the report is limited to those matters set out in the statement below.

Independent examiner's statement

In connection with my examination, no material matters have come to my attention which gives me cause to believe that in any material respect:

- the accounting records were not kept in accordance with section 130 of the Charities Act; and; or
- the accounts did not accord with the accounting records; or
- the accounts did not comply with the accounting requirements concerning the form and content of accounts set out in the Charities (Accounts and Reports) Regulations 2008 other than any requirement that the accounts give a 'true and fair' view which is not a matter considered as part of an independent examination.

I have no concerns and have come across no other matters in connection with the examination to which attention should be drawn in this report in order to enable a proper understanding of the accounts to be reached.

Kelvin Fitton BA FCA
For and on behalf of Smith Craven
Chartered Accountants
Sidings Court
Doncaster DN4 5NU

  Dated: 25.08.21

B:FRIEND

STATEMENT OF FINANCIAL ACTIVITIES (including Income and Expenditure Account)

YEAR ENDED 31ST OCTOBER 2020

	Note	Unrestricted funds £	Restricted income funds £	Total funds £	Prior year funds £
INCOMING RESOURCES	3				
Income and endowments from:					
Donations and legacies		7,493	243,674	251,166	213,511
Charitable activities		3,319	-	3,319	9,090
Total		<u>10,812</u>	<u>243,674</u>	<u>254,485</u>	<u>222,601</u>
RESOURCES EXPENDED	4				
Expenditure on:					
Raising funds		0	2,224	2,224	2,445
Charitable activities		0	178,160	178,160	160,668
Total		<u>0</u>	<u>180,384</u>	<u>180,384</u>	<u>163,113</u>
<i>Net movement in funds</i>		10,812	63,290	74,102	59,488
Reconciliation of funds:					
Total funds brought forward		27,363	46,097	73,460	13,972
<i>Total funds carried forward</i>		<u>38,175</u>	<u>109,386</u>	<u>147,561</u>	<u>73,460</u>

The statement of financial activities includes all gains and losses in the period. All incoming resources and resources expended derive from continuing activities.

B:FRIEND

BALANCE SHEET

AT 31ST OCTOBER 2020

	Note	Unrestricted funds £	Restricted funds £	Total funds £	Prior year funds £
FIXED ASSETS					
Tangible assets	8	-	4,683	4,683	9,496
Total fixed assets		0	4,683	4,683	9,496
CURRENT ASSETS					
Debtors	9	-	1,077	1,077	8,847
Cash at bank and in hand		38,175	170,945	209,120	132,604
Total current assets		38,175	172,022	210,197	141,451
CREDITORS: amounts falling due within one year	10	-	67,319	67,319	77,487
Net current assets		38,175	104,703	142,878	63,964
Total assets less current liabilities		38,175	109,386	147,561	73,459
FUNDS OF THE CHARITY	11				
Restricted income funds		-	109,386	109,386	46,097
Unrestricted funds		38,175	-	38,175	27,363
Total funds		38,175	109,386	147,561	73,460

Approved by the trustees on 25/08/2021

Signed: 

On behalf of the trustees

NOTES TO THE ACCOUNTS

FOR THE YEAR ENDED 31ST OCTOBER 2020

1 BASIS OF PREPARATION

Basis of Accounting

The financial statements have been prepared under the historical cost convention with items recognised at cost or transaction value unless otherwise stated in the relevant note to these accounts. The accounts have been prepared in accordance with the Financial Reporting Standard applicable in the United Kingdom and Republic of Ireland (FRS 102) and with the Charities Act 2011.

2 ACCOUNTING POLICIES

INCOMING RESOURCES

Recognition of incoming resources

These are included in the Statement of Financial Activities (SoFA) when:

- the charity becomes entitled to the resources;
- the trustees are virtually certain they will receive the resources; and
- the monetary value can be measured with sufficient reliability.

Offsetting

There has been no offsetting of assets and liabilities, or income and expenses, unless required or permitted by the FRS 102 SORP or FRS 102.

Grants and donations

Grants and donations are only included in the SoFA when the general income recognition criteria are met.

Contractual income and performance related grants

This is only included in the SoFA once the related goods or services have been delivered.

Gifts in kind

Gifts in kind are accounted for at a reasonable estimate of their value to the charity or the amount actually realised.

Gifts in kind for sale or distribution are included in the accounts as gifts only when sold or distributed by the charity.

Gifts in kind for use by the charity are included in the SoFA as incoming resources when receivable

Donated services and facilities

These are only included in incoming resources (with an equivalent amount in resources expended) where the benefit to the charity is reasonably quantifiable, measurable and material. The value placed on these resources is the estimated value to the charity of the service or facility received.

Volunteer help

The value of any voluntary help received is not included in the accounts but is described in the trustees' annual report.

NOTES TO THE ACCOUNTS

FOR THE YEAR ENDED 31ST OCTOBER 2020

2 ACCOUNTING POLICIES (continued)

EXPENDITURE AND LIABILITIES**Liability recognition**

Liabilities are recognised where it is more likely than not that there is a legal or constructive obligation committing the charity to pay out resources and the amount of the obligation can be measured with reasonable certainty.

Governance and support costs

Support costs have been allocated between governance costs and other support. Governance costs comprise all costs involving public accountability of the charity and its compliance with regulation and good practice.

Support costs include central functions and have been allocated to activity cost categories on a basis consistent with the use of resources.

ASSETS**Tangible fixed assets for use by the charity**

These are capitalised if they can be used for more than one year, and cost at least £250.

They are valued at cost

The depreciation rates and methods used are disclosed in the notes to the accounts.

3 ANALYSIS OF INCOMING RESOURCES

	Unrestricted funds £	Restricted funds £	This year £	Last year £
Donations and legacies				
Donations and gifts	7,492	243,674	251,166	213,511
Legacies	-	-	0	0
Total	7,492	243,674	251,166	213,511
Charitable activities				
Other	3,319	-	3,319	9,090
Total	3,319	-	3,319	9,090
Total income	10,811	243,674	254,485	222,601

B:FRIEND

NOTES TO THE ACCOUNTS

FOR THE YEAR ENDED 31ST OCTOBER 2020

4 ANALYSIS OF RESOURCES EXPENDED

	Unrestricted funds £	Restricted funds £	This year £	Last year £
Raising funds				
Advertising	-	2,224	2,224	2,445
Total expenditure on raising funds	-	2,224	2,224	2,445
Charitable activities				
Other expenditure		178,160	178,160	160,668
Total expenditure on charitable activities	-	178,160	178,160	160,668
Total expenditure	-	180,384	180,384	163,113

5 PAID EMPLOYEES

5.1 Staff costs	This year £	Last year £
Salaries and wages	121,670	96,247
Social security costs	6,163	3,645
Pension costs (defined contribution scheme)	2,422	1,506
Total staff costs	130,255	101,398

No employees received employee benefits for the reporting period of more than £60,000.

	This year £	Last year £
Total amount paid to key personnel	£29,728	£29,300

5.2 Average head count in the year	This year	Last year
Officers and administration	4	4
Support workers	2	2
	6	6

6 DEFINED CONTRIBUTION PENSION SCHEME	This year £	Last year £
6.1 Amount of contributions recognised in the SOFA as an expense	2,422	1,506

B:FRIEND

NOTES TO THE ACCOUNTS

FOR THE YEAR ENDED 31ST OCTOBER 2020

7 DETAILS OF CERTAIN ITEMS OF EXPENDITURE

7.1 Trustee remuneration and expenses

No members of the management committee received any remuneration during the year.

No expenses were reimbursed to members of the management committee.

7.2 Fees for examination of the accounts	This year £	Last year £
Independent examiner's fees for reporting on the accounts	1,800	1,800
	<hr/> 1,800	<hr/> 1,800

8 TANGIBLE FIXED ASSETS

Cost	Computer equipment	Total
At the beginning of the year	14,439	14,439
Additions	-	-
Disposals	-	-
At end of year	<hr/> 14,439	<hr/> 14,439

Depreciation	Basis Rate	Straight Line 3 years	
At the beginning of the year		4,943	4,943
Depreciation		4,813	4,813
Disposals		-	-
At end of year		<hr/> 9,756	<hr/> 9,756

Net book value		
At the beginning of the year	9,496	9,496
At end of year	4,683	4,683

NOTES TO THE ACCOUNTS

FOR THE YEAR ENDED 31ST OCTOBER 2020

9 **DEBTORS AND PREPAYMENTS**

Analysis of debtors	This year £	Last year £
Funding debtors	-	5,870
Prepayments and accrued income	1,077	2,978
Total	1,077	8,848

10 **CREDITORS AND ACCRUALS**

Analysis of creditors	This year £	Last year £
Accruals and deferred income	65,100	75,562
Taxation and social security	2,219	1,925
Total	67,319	77,487

B:FRIEND

NOTES TO THE ACCOUNTS
FOR THE YEAR ENDED 31ST OCTOBER 2020

11 MOVEMENT IN FUNDS

11.1 Restricted funds held

Fund name	Purpose and restrictions
Barnsley MBC	to provide core service provisions in the Dearne area
South Yorkshire Community Fund	to provide core service provisions in the Mexborough area
South Yorkshire Community Fund	to provide core service provisions in the Doncaster Central area
Doncaster MBC	to provide a weekly social club in the Dearne area
Awards For All	to fund photographic and video material to promote the charities aims
Keepmoat	to provide a weekly social club in the Denaby Main area
Big Lottery Building Connections	to provide core service provisions in the South Yorkshire area
Big Lottery Reaching Communities	to provide core service provisions in Doncaster for 3 years and fund staff salaries
South Yorkshire Fire & Rescue	To provide funds for a new website and part fund staff salaries

11.2 Restricted funds summary

	Balance b/f £	Incoming £	Outgoing £	Balance c/f £
Doncaster MBC	4,516	5,103	3,514	6,105
Voluntary Action Rotherham	1,819	8,911	7,706	3,024
South Yorkshire Community Fund	-	4,970	734	4,236
South Yorkshire Community Fund	-	4,992	2,147	2,845
South Yorkshire Community Fund		3,750	39	3,711
Barnsley MBC	18,233	20,212	20,568	17,877
Big Lottery Reaching Communities	9,196	104,309	78,765	34,740
Big Lottery Building Connections	-	32,912	32,912	-
Big Lottery Awards for All		11,285	11,158	127
South Yorkshire Fire & Rescue	12,013	12,102	5,201	18,914
Tesco Bags for Help	-	500		500
Keepmoat	320	2,110	200	2,230
DMBC - Covid-19 Response		7,370	4,452	2,918
CAF - Charities Aid Foundation		10,370	5,781	4,589
Nesta - Covid-19 Response		7,929	7,207	722
Masonic Charitable Trust		2,083		2,083
Greggs Foundation - Rotherham		1,000		1,000
Scurrah Wainwright Charity		1,006		1,006
SOAR - Sheffield		1,000		1,000
Aviva Crowdfunder		1,759		1,759
Total	46,097	243,673	180,384	109,386

11.3 Analysis of net assets between funds

	General Funds £	Restricted Funds £	Total Funds £
Tangible fixed assets	-	4,683	4,683
Current assets	38,175	172,022	210,197
Current liabilities	-	67,319	67,319
Net assets at 31 October 2020	38,175	109,386	147,561

NOTES TO THE ACCOUNTS FOR THE YEAR ENDED 31ST OCTOBER 2020

11 RELATED PARTY TRANSACTIONS

No trustee or other person related to the charity had any personal interest in any contract or transaction entered into by the charity during the period.

B:FRIEND
(A charitable incorporated organisation limited by guarantee)

**REPORT AND FINANCIAL STATEMENTS
FOR THE YEAR ENDED 31 OCTOBER 2020**

CHARITY NUMBER 1171148

COMPANY NUMBER CE009648

B:FRIEND

CONTENTS

	Page
MANAGEMENT COMMITTEE REPORT	2-5
INDEPENDENT EXAMINER'S REPORT	6
STATEMENT OF FINANCIAL ACTIVITIES	7
BALANCE SHEET	8
NOTES TO THE ACCOUNTS	9-15

**MANAGEMENT COMMITTEE REPORT FOR THE PERIOD
ENDED 31 OCTOBER 2020**

The Management Committee presents its report and accounts for the year ended 31 October 2020.

Charity information
Management Committee

Daniel Burton	Acting Chairperson (appointed)/Treasurer
Louis Stokes	Non-Executive member
Lucy Cole	Non-Executive member
Geraint Evans	Non-Executive member
Melissa Beckett	Non-Executive member

Charity Registration number	1171148
-----------------------------	---------

Charity registered office	Archway Doncaster Road High Melton Doncaster South Yorkshire DN5 7SU
---------------------------	---

Operational address	Unit 315 The Workstation 15 Paternoster Row Sheffield S1 2BX
---------------------	--

Secretary	Matthew Cutmore
-----------	-----------------

Independent examiner	Smith Craven Chartered Accountants Sidings House Sidings Court Doncaster
----------------------	--

Bankers	Santander UK Plc Doncaster
---------	-------------------------------

MANAGEMENT COMMITTEE REPORT FOR THE YEAR ENDED 31 OCTOBER 2020

Structure, governance and management

Governing Document

The organisation is a charitable incorporated organisation formed on 17 January 2017 and registered as a charity.

The charity was established under a Constitution which establishes the objects and powers of the charitable company and is governed under its Constitution.

In the event of the charity being wound up members are required to contribute an amount not exceeding £1.

Recruitment and Appointment of Management Committee

The Trustees of the charity for the purposes of charity law and under the charity's Constitution are known as members of the Management Committee. Under the requirements of the Constitution the members of the Management Committee are elected to serve for a period of three years after which they must be re-elected at the next Annual General Meeting.

Objectives and Activities

The objectives of the charity are to promote social inclusion amongst elderly persons, in particular, but not exclusive to over 65's, resident in Doncaster and the surrounding areas who are excluded by society, by provision of:

- Befriending services through weekly outreach to individuals.

Such other ways from time to time as the trustees see fit in furtherance with said objects. B:Friend is a not-for-profit organisation.

B:Friend pairs volunteer befrienders with socially isolated older neighbours in the community with the aim of reducing loneliness by reengaging with people and places around them. Our key activities are 1:1 befriending pairings, visiting once a week for a "cuppa" and a chat. B:Friend also provides two hour social clubs, held in various locations that offer peer support through a range of physically and mentally stimulating sessions.

All activities undertaken by the charity are to benefit people in the community, be they volunteers or older neighbours, and all remain equitable with services free at the point of delivery.

Trustees ensure all activities are in accordance with the charity objects outlined in the constitution and are for the public benefit.

MANAGEMENT COMMITTEE REPORT FOR THE YEAR ENDED 31 OCTOBER 2020

Achievements and performance

- In the reporting period, the charity has created over 140 x 1:1 befriending pairings across Doncaster, Barnsley, Sheffield and Rotherham. In addition to this our team has supported and managed an additional 120 x 1:1 befriending pairings already in existence.
- Facilitated approximately 960 hours of Social Club activity across the region with weekly activity, peer support and entertainment.
- Collaborated with other charity and community groups, along with statutory health and social care colleagues, on wider social challenges faced across towns and cities we work in.
- A community event hosted by the charity was featured on BBC Breakfast national news and other media coverage includes regional radio and print media.

Financial Review

Principal Funding Sources

B:Friend was grateful to receive funding from: The National Lottery Community Fund, the Department for Culture, Media and Sport, South Yorkshire Fire and Rescue, Barnsley Metropolitan Borough Council, Doncaster Metropolitan Borough Council and Public Health Doncaster during this period. We also received continued financial and skills support from partners including South Yorkshires Community Foundation, E-On Tween Bridge, Voluntary Action Rotherham, Coca Cola, Rotary Club of St Georges, Doncaster Medical Ball and the Santander Foundation.

Reserve Policy

As a policy, it has always been felt prudent to maintain reserves at a level whereby at least three months expenditure could be met in the event of a significant loss of funding.

MANAGEMENT COMMITTEE REPORT FOR THE YEAR ENDED 31 OCTOBER 2020

Statement of Management Committee's Responsibilities

Charity law requires the Management Committee to prepare financial statements for each financial period which give a true and fair view of the state of the affairs of the CIO as at the balance sheet date and of its incoming resources and application of resources, including income and expenditure, for the financial period. In preparing those financial statements, the Management Committee should follow best practice and:

- select suitable accounting policies and then apply them consistently
- make judgements and estimates that are reasonable and prudent; and
- prepare the financial statements on the going concern basis unless it is inappropriate to assume that the company will continue on that basis.

The Management Committee is responsible for maintaining proper accounting records which disclose with reasonable accuracy at any time the financial position of the charitable company and to enable them to ensure that the financial statements comply with the Companies Act 2006 and Charities SORP (FRS102). The Management Committee is also responsible for safeguarding the assets of the charitable company and hence for taking reasonable steps for the prevention and detection of fraud and other irregularities.

Members of the Management Committee

Members of the Management Committee, who are trustees for the purpose of charity law, who served during the year and up to the date of this report are set out on page 2.

In accordance with charities law, as the CIO's trustees, we certify that:

- so far as we are aware, there is no relevant accounting information of which the charity's independent examiners are unaware; and
- as the trustees of the CIO, we have taken all the steps that we ought to have taken in order to make ourselves aware of any relevant accounting information and to establish that the charity's independent examiners are aware of that information.

Approval

This report was approved by the Management Committee on 25/08/2021 and signed on its behalf by:

Daniel Burton



Chairperson

B:FRIEND

INDEPENDENT EXAMINER'S REPORT ON THE ACCOUNTS

Report to the trustees of B:Friend on the accounts for the period ended 31 October 2020 set out on pages 7 to 15

Respective responsibilities of trustees and examiner

The trustees are responsible for the preparation of the accounts in accordance with the Charities Act 2011 ('the Act').

The trustees consider that an audit is not required for this period under section 144 of the Act, and that an independent examination is needed.

It is my responsibility to:

- examine the accounts under section 145 of the Act;
- to follow the procedures laid down in the General Directions given by the Charity Commission under section 145(5)(b) of the Act, and
- to state whether particular matters have come to my attention.

Basis of independent examiner's statement

The charity's gross income exceeded £250,000 and I am qualified to undertake the examination by being a qualified member of Institute of Chartered Accountants in England and Wales (ICAEW).

My examination was carried out in accordance with General Directions given by the Charity Commission. An examination includes a review of the accounting records kept by the charity and a comparison of the accounts presented with those records. It also includes consideration of any unusual items or disclosures in the accounts, and seeking of explanations from the trustees concerning any such matters. The procedures undertaken do not provide all the evidence that would be required in an audit, and consequently no opinion is given as to whether the accounts present a 'true and fair view' and the report is limited to those matters set out in the statement below.

Independent examiner's statement

In connection with my examination, no material matters have come to my attention which gives me cause to believe that in any material respect:

- the accounting records were not kept in accordance with section 130 of the Charities Act; and; or
- the accounts did not accord with the accounting records; or
- the accounts did not comply with the accounting requirements concerning the form and content of accounts set out in the Charities (Accounts and Reports) Regulations 2008 other than any requirement that the accounts give a 'true and fair' view which is not a matter considered as part of an independent examination.

I have no concerns and have come across no other matters in connection with the examination to which attention should be drawn in this report in order to enable a proper understanding of the accounts to be reached.

Kelvin Fitton BA FCA
For and on behalf of Smith Craven
Chartered Accountants
Sidings Court
Doncaster DN4 5NU

  Dated: 25.08.21

B:FRIEND

STATEMENT OF FINANCIAL ACTIVITIES (including Income and Expenditure Account)

YEAR ENDED 31ST OCTOBER 2020

	Note	Unrestricted funds £	Restricted income funds £	Total funds £	Prior year funds £
INCOMING RESOURCES	3				
Income and endowments from:					
Donations and legacies		7,493	243,674	251,166	213,511
Charitable activities		3,319	-	3,319	9,090
Total		<u>10,812</u>	<u>243,674</u>	<u>254,485</u>	<u>222,601</u>
RESOURCES EXPENDED	4				
Expenditure on:					
Raising funds		0	2,224	2,224	2,445
Charitable activities		0	178,160	178,160	160,668
Total		<u>0</u>	<u>180,384</u>	<u>180,384</u>	<u>163,113</u>
<i>Net movement in funds</i>		10,812	63,290	74,102	59,488
Reconciliation of funds:					
Total funds brought forward		27,363	46,097	73,460	13,972
<i>Total funds carried forward</i>		<u>38,175</u>	<u>109,386</u>	<u>147,561</u>	<u>73,460</u>

The statement of financial activities includes all gains and losses in the period. All incoming resources and resources expended derive from continuing activities.

B:FRIEND

BALANCE SHEET

AT 31ST OCTOBER 2020

	Note	Unrestricted funds £	Restricted funds £	Total funds £	Prior year funds £
FIXED ASSETS					
Tangible assets	8	-	4,683	4,683	9,496
Total fixed assets		0	4,683	4,683	9,496
CURRENT ASSETS					
Debtors	9	-	1,077	1,077	8,847
Cash at bank and in hand		38,175	170,945	209,120	132,604
Total current assets		38,175	172,022	210,197	141,451
CREDITORS: amounts falling due within one year	10	-	67,319	67,319	77,487
Net current assets		38,175	104,703	142,878	63,964
Total assets less current liabilities		38,175	109,386	147,561	73,459
FUNDS OF THE CHARITY	11				
Restricted income funds		-	109,386	109,386	46,097
Unrestricted funds		38,175	-	38,175	27,363
Total funds		38,175	109,386	147,561	73,460

Approved by the trustees on 25/08/2021

Signed: 

On behalf of the trustees

NOTES TO THE ACCOUNTS

FOR THE YEAR ENDED 31ST OCTOBER 2020

1 BASIS OF PREPARATION

Basis of Accounting

The financial statements have been prepared under the historical cost convention with items recognised at cost or transaction value unless otherwise stated in the relevant note to these accounts. The accounts have been prepared in accordance with the Financial Reporting Standard applicable in the United Kingdom and Republic of Ireland (FRS 102) and with the Charities Act 2011.

2 ACCOUNTING POLICIES

INCOMING RESOURCES

Recognition of incoming resources

These are included in the Statement of Financial Activities (SoFA) when:

- the charity becomes entitled to the resources;
- the trustees are virtually certain they will receive the resources; and
- the monetary value can be measured with sufficient reliability.

Offsetting

There has been no offsetting of assets and liabilities, or income and expenses, unless required or permitted by the FRS 102 SORP or FRS 102.

Grants and donations

Grants and donations are only included in the SoFA when the general income recognition criteria are met.

Contractual income and performance related grants

This is only included in the SoFA once the related goods or services have been delivered.

Gifts in kind

Gifts in kind are accounted for at a reasonable estimate of their value to the charity or the amount actually realised.

Gifts in kind for sale or distribution are included in the accounts as gifts only when sold or distributed by the charity.

Gifts in kind for use by the charity are included in the SoFA as incoming resources when receivable

Donated services and facilities

These are only included in incoming resources (with an equivalent amount in resources expended) where the benefit to the charity is reasonably quantifiable, measurable and material. The value placed on these resources is the estimated value to the charity of the service or facility received.

Volunteer help

The value of any voluntary help received is not included in the accounts but is described in the trustees' annual report.

NOTES TO THE ACCOUNTS

FOR THE YEAR ENDED 31ST OCTOBER 2020

2 ACCOUNTING POLICIES (continued)

EXPENDITURE AND LIABILITIES**Liability recognition**

Liabilities are recognised where it is more likely than not that there is a legal or constructive obligation committing the charity to pay out resources and the amount of the obligation can be measured with reasonable certainty.

Governance and support costs

Support costs have been allocated between governance costs and other support. Governance costs comprise all costs involving public accountability of the charity and its compliance with regulation and good practice.

Support costs include central functions and have been allocated to activity cost categories on a basis consistent with the use of resources.

ASSETS**Tangible fixed assets for use by the charity**

These are capitalised if they can be used for more than one year, and cost at least £250.

They are valued at cost

The depreciation rates and methods used are disclosed in the notes to the accounts.

3 ANALYSIS OF INCOMING RESOURCES

	Unrestricted funds £	Restricted funds £	This year £	Last year £
Donations and legacies				
Donations and gifts	7,492	243,674	251,166	213,511
Legacies	-	-	0	0
Total	7,492	243,674	251,166	213,511
Charitable activities				
Other	3,319	-	3,319	9,090
Total	3,319	-	3,319	9,090
Total income	10,811	243,674	254,485	222,601

B:FRIEND

NOTES TO THE ACCOUNTS

FOR THE YEAR ENDED 31ST OCTOBER 2020

4 ANALYSIS OF RESOURCES EXPENDED

	Unrestricted funds £	Restricted funds £	This year £	Last year £
Raising funds				
Advertising	-	2,224	2,224	2,445
Total expenditure on raising funds	-	2,224	2,224	2,445
Charitable activities				
Other expenditure		178,160	178,160	160,668
Total expenditure on charitable activities	-	178,160	178,160	160,668
Total expenditure	-	180,384	180,384	163,113

5 PAID EMPLOYEES

5.1 Staff costs	This year £	Last year £
Salaries and wages	121,670	96,247
Social security costs	6,163	3,645
Pension costs (defined contribution scheme)	2,422	1,506
Total staff costs	130,255	101,398

No employees received employee benefits for the reporting period of more than £60,000.

	This year £	Last year £
Total amount paid to key personnel	£29,728	£29,300

5.2 Average head count in the year	This year	Last year
Officers and administration	4	4
Support workers	2	2
	6	6

6 DEFINED CONTRIBUTION PENSION SCHEME	This year £	Last year £
6.1 Amount of contributions recognised in the SOFA as an expense	2,422	1,506

B:FRIEND
NOTES TO THE ACCOUNTS
FOR THE YEAR ENDED 31ST OCTOBER 2020

7 DETAILS OF CERTAIN ITEMS OF EXPENDITURE

7.1 Trustee remuneration and expenses

No members of the management committee received any remuneration during the year.

No expenses were reimbursed to members of the management committee.

7.2 Fees for examination of the accounts	This year £	Last year £
Independent examiner's fees for reporting on the accounts	1,800	1,800
	<hr/> 1,800	<hr/> 1,800

8 TANGIBLE FIXED ASSETS

Cost	Computer equipment	Total
At the beginning of the year	14,439	14,439
Additions	-	-
Disposals	-	-
At end of year	<hr/> 14,439	<hr/> 14,439

Depreciation	Basis Rate	Straight Line 3 years	
At the beginning of the year		4,943	4,943
Depreciation		4,813	4,813
Disposals		-	-
At end of year		<hr/> 9,756	<hr/> 9,756

Net book value		
At the beginning of the year	9,496	9,496
At end of year	4,683	4,683

NOTES TO THE ACCOUNTS

FOR THE YEAR ENDED 31ST OCTOBER 2020

9 **DEBTORS AND PREPAYMENTS**

Analysis of debtors	This year £	Last year £
Funding debtors	-	5,870
Prepayments and accrued income	1,077	2,978
Total	1,077	8,848

10 **CREDITORS AND ACCRUALS**

Analysis of creditors	This year £	Last year £
Accruals and deferred income	65,100	75,562
Taxation and social security	2,219	1,925
Total	67,319	77,487

B:FRIEND

NOTES TO THE ACCOUNTS
FOR THE YEAR ENDED 31ST OCTOBER 2020

11 MOVEMENT IN FUNDS

11.1 Restricted funds held

Fund name	Purpose and restrictions
Barnsley MBC	to provide core service provisions in the Dearne area
South Yorkshire Community Fund	to provide core service provisions in the Mexborough area
South Yorkshire Community Fund	to provide core service provisions in the Doncaster Central area
Doncaster MBC	to provide a weekly social club in the Dearne area
Awards For All	to fund photographic and video material to promote the charities aims
Keepmoat	to provide a weekly social club in the Denaby Main area
Big Lottery Building Connections	to provide core service provisions in the South Yorkshire area
Big Lottery Reaching Communities	to provide core service provisions in Doncaster for 3 years and fund staff salaries
South Yorkshire Fire & Rescue	To provide funds for a new website and part fund staff salaries

11.2 Restricted funds summary

	Balance b/f £	Incoming £	Outgoing £	Balance c/f £
Doncaster MBC	4,516	5,103	3,514	6,105
Voluntary Action Rotherham	1,819	8,911	7,706	3,024
South Yorkshire Community Fund	-	4,970	734	4,236
South Yorkshire Community Fund	-	4,992	2,147	2,845
South Yorkshire Community Fund		3,750	39	3,711
Barnsley MBC	18,233	20,212	20,568	17,877
Big Lottery Reaching Communities	9,196	104,309	78,765	34,740
Big Lottery Building Connections	-	32,912	32,912	-
Big Lottery Awards for All		11,285	11,158	127
South Yorkshire Fire & Rescue	12,013	12,102	5,201	18,914
Tesco Bags for Help	-	500		500
Keepmoat	320	2,110	200	2,230
DMBC - Covid-19 Response		7,370	4,452	2,918
CAF - Charities Aid Foundation		10,370	5,781	4,589
Nesta - Covid-19 Response		7,929	7,207	722
Masonic Charitable Trust		2,083		2,083
Greggs Foundation - Rotherham		1,000		1,000
Scurrah Wainwright Charity		1,006		1,006
SOAR - Sheffield		1,000		1,000
Aviva Crowdfunder		1,759		1,759
Total	46,097	243,673	180,384	109,386

11.3 Analysis of net assets between funds

	General Funds £	Restricted Funds £	Total Funds £
Tangible fixed assets	-	4,683	4,683
Current assets	38,175	172,022	210,197
Current liabilities	-	67,319	67,319
Net assets at 31 October 2020	38,175	109,386	147,561

NOTES TO THE ACCOUNTS FOR THE YEAR ENDED 31ST OCTOBER 2020

11 RELATED PARTY TRANSACTIONS

No trustee or other person related to the charity had any personal interest in any contract or transaction entered into by the charity during the period.