

COMPANY REGISTRATION NUMBER : 10348139

**HOME-START ESSEX LIMITED
COMPANY LIMITED BY GUARANTEE
UNAUDITED FINANCIAL STATEMENTS
31 MARCH 2024**

Charity Number : 1170940



Edmund Carr LLP
Chartered Accountants
146 New London Road
Chelmsford
Essex
CM2 0AW

HOME-START ESSEX LIMITED
COMPANY LIMITED BY GUARANTEE
FINANCIAL STATEMENTS
YEAR ENDED 31 MARCH 2024

CONTENTS	PAGE
Trustees' annual report	1
Independent Examiner's report to the Trustees	11
Statement of financial activities	13
Balance sheet	14
Statement of cash flows	15
Notes to the financial statements	16

HOME-START ESSEX LIMITED COMPANY LIMITED BY GUARANTEE

TRUSTEES' ANNUAL REPORT

YEAR ENDED 31 MARCH 2024

The Trustees, who are also Directors of the Charity for the purposes of the Companies Act 2006, present their report with the financial statements of the Charity for the period ended 31 March 2024. The Trustees/Directors have prepared the accounts in accordance with the Charities Act 2011, the Companies Act 2006 and Accounting and Reporting by Charities: Statement of Recommended Practice applicable to charities preparing their accounts in accordance with the Financial Reporting Standard applicable in the UK and Republic of Ireland (FRS 102) (effective 1 January 2019).

REFERENCE AND ADMINISTRATIVE DETAILS

Registered Company number

10348139 (England and Wales)

Registered Charity number

1170940

Registered office

Home-Start Essex
Maldon District Council
Princes Road
Maldon
Essex CM9 5DL

Trustees

Roselyn Bullen-Bell – resigned 17/11/2023
Johanna Burnett - resigned 17/11/2023
Bryan Burrough (Vice Chair)
Rhian Capener – resigned 26/05/2023
Rebecca Dixon
Joanna Georgiades - appointed 21/07/2023
David Neale - resigned 15/05/2024
Neil Oakley
Edwin Powell
Sarah St. Pierre (Chair)
Dawn Taylor
Anna Casbolt (Treasurer) - appointed 17/11/2023
Helen Robinson - appointed 17/11/2023
Lauren Josman - appointed 17/11/2023
Graham Robjohns - appointed 17/11/2023

Company Secretary

Graham Robjohns

Chief Executive Officer

Nicola O'Brien

Ambassadors

Rex Howling KC
Lady Rosemary Ruggles-Brise
The Right Honourable Sir John Whittingdale OBE MP

**HOME-START ESSEX LIMITED
COMPANY LIMITED BY GUARANTEE**

TRUSTEES' ANNUAL REPORT (continued)

YEAR ENDED 31 MARCH 2024

Members Guarantee

The company is a registered charity and a company limited by guarantee with liability of each of the members being limited to £1.

Independent examiner

Sandra Morrell FCCA
Edmund Carr LLP
146 New London Road
Chelmsford
Essex
CM2 0AW

INTRODUCTION FROM THE CHAIR

I have had the huge privilege of being Chair of Home-Start Essex since December 2019 and I am delighted to be able to celebrate the achievements of Home-Start Essex in this Annual Report. We have increasing numbers of families seeking our support, to help them overcome often multiple and complex difficulties in their lives and therefore we have to be flexible and adapt to meet their needs.

In October 2023 we reviewed our priorities in delivering our Strategic Objectives and welcomed for the first time volunteer representatives, who added their unique insights and experiences, alongside feedback from families, staff and trustees to inform our priorities for the year. Engaging and ensuring we gain feedback from families to inform developments in our services is essential to ensure that we support them in ways which make a real difference.

In March 2024 we released our Equity, Equality, Diversity and Inclusion (EEDI) Action Plan which will underpin all aspects of our work. We recognise that there is still much to do, to ensure that we are able to reach all of those in our communities, who could benefit from our support and to ensure that the way in which we deliver our support is fully inclusive. We have this year further developed and built our networks of support across the Home-Start Network, as well as with external partners and stakeholders to ensure that by working together, we ensure that we continue our journey of continuous improvement in supporting our beneficiaries.

Our volunteers are essential to both the delivery and development of Home-Start Essex. Our model of support to families in the home, and in the group programmes we provide, depends on volunteers and the cost of living crisis is making it harder to attract and retain volunteers. We undertook a self-assessment of our volunteering practice against national standards early in 2023 and from this we developed our Volunteer Strategy. Alongside this our volunteer network members continue to give us regular feedback on what is working well and how we can improve the volunteer experience, as well as piloting training and new ways of working.

**HOME-START ESSEX LIMITED
COMPANY LIMITED BY GUARANTEE**

TRUSTEES' ANNUAL REPORT (continued)

YEAR ENDED 31 MARCH 2024

The Annual Report highlights how improvements which we were piloting last year have been further developed and established as core to our service offer. Our group to support parents /carers of children with additional needs in one district has been so successful and demonstrated the success of partnership working. We know that there is a need for this specialist support in other districts, and will be looking to extend this support when funding allows. We will continue to work with partner organisations to look at opportunities where our skills and experiences together can make the greatest impact for families.

The funding environment is increasingly competitive, and we are extremely grateful to all those funders who have recognised the impact of the work we do, and have supported us. We are enormously grateful for the funding given to us from trusts and foundations, local businesses and individuals who recognise the importance of the early years for a child's development and support us in many and varied ways. Through our work supporting parents / carers and children in the early years, this continues to help us to achieve our aim *'Helping to give children the best possible start in life'*.

Sarah St Pierre, Chair of Trustees

HOME-START ESSEX LIMITED
COMPANY LIMITED BY GUARANTEE
TRUSTEES' ANNUAL REPORT (continued)
YEAR ENDED 31 MARCH 2024

OBJECTIVES AND ACTIVITIES

Objectives and aims

The Objects of the Charity are:

- a) To safeguard, protect and preserve the good health, both mental and physical, of children and parents of children;*
- b) To prevent cruelty to or maltreatment of children;*
- c) To relieve sickness, poverty and need amongst children and parents of children;*
- d) To promote the education of the public in better standards of child care;*

Principally, but not exclusively, within the area of Essex and its environs.

The vision of the Charity, as captured in our Strategic Plan is:

“For every child and young person in Essex to grow up in a family that is strong and resilient and able to access the support they need, when and where they need it.”

The Charity’s Mission Statement is:

“To provide high-quality, family-led services, by ourselves and in collaboration with others, which enable families to be strong and resilient.”

Home-Start Essex (HSE) supports families experiencing difficulties and have at least one child under the age of five. HSE supports children and parents/carers facing difficulties such as additional needs, learning or physical disabilities, mental health, domestic abuse, social isolation, poverty, bereavement and many other issues affecting their ability to cope and provide a nurturing environment for their children.

We recruit and train volunteers, through an accredited programme who provide regular weekly home-based, group or telephone support to families. They provide positive role models, offer friendly and informal confidential support to help parents build their confidence, resilience and to improve their wellbeing. They are supervised, supported, and receive ongoing training from experienced Family Support Co-ordinators who assess and with the family agree a bespoke programme of support. This may include specialist wellbeing or behaviour support programmes in addition to 1:1 and group support.

We receive referrals from statutory and other partner organisations and increasingly families refer themselves for support. We are well respected and are commissioned through the Essex Child & Family Well Being service to provide services across the three quadrants of Mid, West and South Essex.

All of the developments in our support to families during the early years are based on the belief that all children need a happy and secure childhood to help them to achieve their full potential and that underpinning this is a need for parents/carers to have the opportunity to have someone they trust alongside them to help them navigate when times are difficult.

Home-Start Essex’s support of parents and children helps them to grow in confidence, strengthens their relationships, builds local supportive networks within the community, and so ensures that children are given the best possible start in life.

HOME-START ESSEX LIMITED
COMPANY LIMITED BY GUARANTEE
TRUSTEES' ANNUAL REPORT (continued)
YEAR ENDED 31 MARCH 2024

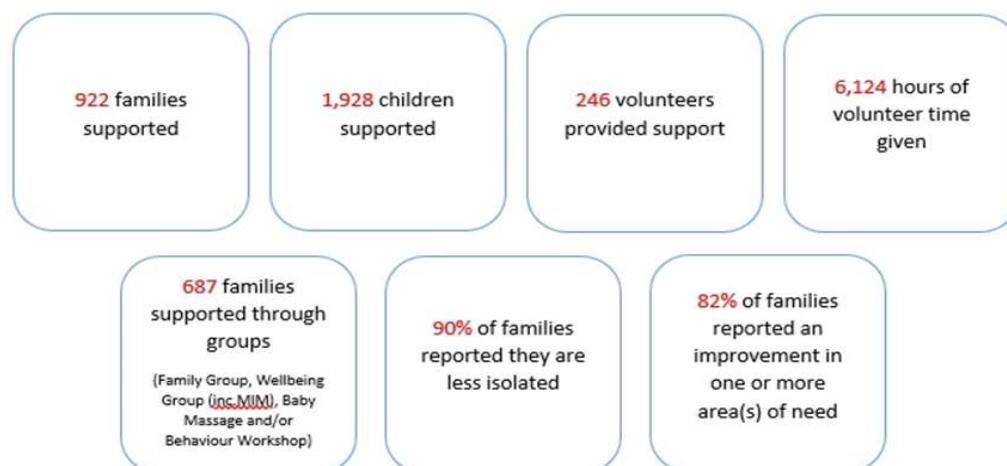
Public Benefit

The trustees confirm that they have reviewed the Charity Commission's guidance on public benefit, including guidance on charging for services, when setting and reviewing the aims and objectives of the Charity and making plans for the future.

The Charity currently provides services at no cost to beneficiaries, and these are funded through applications to the National Lottery Community Fund, public sector bodies, trusts and foundations, and through community fundraising, individual giving, and sponsorship.

ACHIEVEMENTS AND PERFORMANCE

Through the Charity's work, the Trustees/Directors are pleased to report the following Outputs and Outcomes as highlights for the financial year to 31 March 2024:



During 2023-2024 the demand for our services continued to grow. We received over 1000 referrals, an increase of 13% from the previous year and we supported 922 families an increase of 6%, benefiting over 1900 children. We have seen an increase in complexity of challenges that families are facing and health inequalities faced by families across South, West and Mid Essex. The longer-term impact of social isolation and increased poverty levels continue to directly impact on child development, children's behaviour and school readiness and we have an increasing number of parents/carers struggling to manage children's behaviour. During 2023-2024 the demand for our behavioural support programme has been incredibly high; an increase of 95% since the service started in 2022. As a result, we have continued to expand our existing provision, offering more online behaviour workshops and online one to one behaviour support. A priority is to secure further funding to increase this service.

**HOME-START ESSEX LIMITED
COMPANY LIMITED BY GUARANTEE**

TRUSTEES' ANNUAL REPORT (continued)

YEAR ENDED 31 MARCH 2024

Many parents struggle to support their children's developmental needs and are unsure if developmental delay is due to isolation or neurodiversity. Continued long waiting lists for children's specialist assessments leave parents frustrated, confused and anxious with nowhere to turn. In October 2023 we established two SEND groups with sensory play and activities for parents/carers and children. The new groups assist families with getting appropriate advice and support/ strategies in place, provide a safe and friendly environment with other families that are experiencing similar or the same SEND issues, emotional support, support and guidance to parents who have learning difficulties/additional needs, and support to access early developmental checks so additional needs can be identified early. The group promotes Partnership Working, having local charities and professionals offering support and information during group sessions.

Mental health and isolation of families continue to be the highest expressed needs and particularly during the perinatal period where birth trauma can have devastating effects on maternal and infant mental health. During 2023-2024 we established three 'Mothers in Mind' groups focussed on supporting parents struggling with their mental health and wellbeing during the peri-natal period, providing coping strategies and confidential peer support. This in person group with pre-school children in attendance has been hugely successful.

The expansions to service provision within behaviour support, Mothers in Mind and our SEND groups has enabled Home-Start Essex to meet the emerging demand for support with particular challenges that families are facing when it is needed so issues are not becoming entrenched.

Volunteers are the foundations of Home-Start support to families and during the last year the cost-of-living crisis has continued to impact on people's ability to be able to give their time freely. Our volunteer strategy continues to focus on diversifying our volunteer base to attract a wider demographic including students who are looking for careers in children and family services and members of minority and more marginalised communities within the districts we support across Mid, West and South Essex.

Parents/Carers often need a holistic approach to supporting multiple needs and families are able to access a combination of services to meet new needs as they emerge. The following feedback is from a parent who accessed a combination of services.

"The support Home-Start has given me hasn't been life changing, it has been life giving... I am a happier Mum and wife, and as a result have four slightly older and thriving children. ... For me and my experience, I feel a more apt name for this amazing charity would be Life-Start. Without them I'm not sure I'd be here." Parent of 4 children who had suffered childhood trauma, bereavement, isolation and post-natal depression. This feedback came from a parent a couple of years after Home-Start support had finished and highlights the longer-term impact of Home-Start support.

HOME-START ESSEX LIMITED
COMPANY LIMITED BY GUARANTEE
TRUSTEES' ANNUAL REPORT (continued)
YEAR ENDED 31 MARCH 2024

FUNDRAISING ACTIVITIES

Total income rose 20% to £952,750. However this included £220,961 income from an Art Show. Excluding this underlying income fell 8% to £731,789. This reflected a generally difficult period for grant and commission income.

Grant income fell by 11% to £443,406. We continued to be supported by the National Community Lottery Fund and are pleased to have been awarded a vital grant for a further five years starting in 2024. Other substantial grants were received from BBC Children in Need, Garfield Weston and Elijah's Pot. We were also beneficiaries of the UK Government's levelling up programme via Shared Prosperity Funds from Southend City and Uttlesford District Councils. We were grateful for the continued help from a number of the fundholders of Essex Community Foundation (ECF).

Contractual income decreased by 5% to £238,178 as the contract with A Better Start Southend came to an end. The remaining contractual income represents the important sub-contract we have from the HCRG Care Group as part of the Essex Child & Family Wellbeing Service.

In February 2024 a contemporary Art Show called "Art at the Park" took place at Braxted Park in aid of Home-Start Essex. We are very grateful for the sponsorship of this Show from Duncan and Nicky Clark, the Chestnut Group and Howden UK Brokers Limited. After expenses the contribution from the Art Show to our net income was £83,854. Other donation income fell 5% to £15,316.

PLANS FOR FUTURE PERIODS

2023-2024 has seen ongoing and increased fundraising challenges as competition for grant and trust funding increases and availability of opportunities to access local authority and health funding decreases. In addition, the cost-of-living crisis impacts on levels of donations, community fundraising and corporate support. In order to secure Home-Start Essex's longer-term sustainability the Trustee Board have supported the CEO's proposal to expand the Fundraising department in order to increase and diversify the income streams. We have invested in the appointment of a Grants & Commissioning Manager and an Events & Partnerships Manager. This will allow us to sustain our applications to grants & trusts and apply for commissioned services. However, we can also dedicate an experienced and skilled Events and Partnerships Manager to growing corporate/events/community income. By creating a stable events portfolio and community fundraising options we will raise the profile of the charity and develop brand awareness.

We are investing in upskilling our staff team in mental health training, wellbeing support, children's behaviour management and management development training so we are succession planning widely across the staff team.

We are also investing in volunteer training and retention. Volunteers are the foundations of Home-Start Essex support and we need to invest in expanding, developing and valuing our volunteer team to ensure we are able to sustain and grow our volunteer base across all our areas of support. Ongoing training will upskill volunteers across a wide range of circumstances that families are struggling to cope with. We encourage volunteers to join the Home-Start Essex staff team when vacancies and opportunities arise. During the last three years we have welcomed three Home-Start Essex volunteers to the staff team. Moreover, a number of supported parents have joined us as volunteers.

HOME-START ESSEX LIMITED
COMPANY LIMITED BY GUARANTEE

TRUSTEES' ANNUAL REPORT (continued)

YEAR ENDED 31 MARCH 2024

During the last year our CEO and Chair of the Board completed 'The Lasting Difference' programme focussed on sustaining non-profit organisations, leaders and impact, centred around five core, interrelated capabilities as the foundations of sustainability: Involvement, Income generation, Innovation, Improvement and Impact Measurement. This has provided invaluable resources and support with planning and we have developed action plans for improvement. During October the Senior Management Team and Board of Trustees will meet to review the Strategic/Annual Plan incorporating the sustainability action plan into plans into 2025 and beyond.

The Trustees and staff of Home-Start Essex will continue to look forward and seek opportunities to develop our services further, taking into account the changing external factors impacting on family lives. Informed by feedback from the families, volunteers, staff and our partner organisations, we will also continue to strengthen and to demonstrate the outcomes and impact of our work with children and families.

FINANCIAL REVIEW

	2024	2023
	£	£
Total Income	952,750	795,518
Total expenditure	<u>918,411</u>	<u>799,065</u>
Net Income / (Expenditure)	<u>34,339</u>	<u>(3,547)</u>

The Income for the year, comprising Donations of £15,316, income from Charitable Activities of £681,584, income from other trading activities - fundraising of £250,918 (which included £220,961 from the Art show as detailed on page 7) and income of £4,932 from Bank Interest. Donations were 5% lower than last year. Income from the Charity's Fundraising activities increased by £222,935. Income from Charitable Activities, comprising Grants of £443,406 and from Contracts of £238,178, was 9% lower than last year. During the year, we were pleased to receive substantial grant income from several organisations including The National Lottery Community Fund (£269,699) and BBC Children in Need (£20,708). In addition, once again we were grateful to the Essex Community Foundation, through which we received funds from various organisations totalling £28,453. Contract income was down by 5.2% and this included £175,000 from HCRG Care Group, and £63,178 from the Southend City Council and Uttlesford District Council's UK Shared Prosperity Funds. There is more detailed information under the Fundraising Activities section page 7, and also on page 22. We thank all those named in the Report, and all our other funders and donors, for their support in helping Home-Start Essex deliver their services to families in need of assistance.

HOME-START ESSEX LIMITED COMPANY LIMITED BY GUARANTEE

TRUSTEES' ANNUAL REPORT (continued)

YEAR ENDED 31 MARCH 2024

During the year the Charity adjusted further its services to meet the changes in need. The overall costs of providing services fell by 6.3%. Staffing costs continued to be the largest element of our expenditure at £648,662 (70.7%), and this figure was £22,448 (3.6%) higher than last year. The continuing changes in the modes of delivering the Charity's services meant that there were changes in the amounts being spent on different types of costs. There was an increase in the travelling and subsistence costs for staff and volunteers. However, this was offset by reductions in computer and website costs and external supervision and instructor fees.

The Trustees are confident that there are sufficient funds, both available and due to be received, to support the services being delivered by Home-Start Essex for, at least, the next twelve months. Monitoring procedures are in place to identify when grants and contracts are due to end, so that an early decision can be made, to either allocate alternative funding, or to re-plan service delivery.

Reserves Policy

The Home-Start Essex reserves policy is to hold unrestricted funds equivalent to three to six months' budgeted expenditure. The Trustees consider that this is essential in order to continue to provide existing services, to support an expansion of services to meet rising demand, to provide sufficient cover for the possible loss of one or more major funders and to enable a proper winding down of the Charity, should that become necessary.

The total funds held by the charity at the 31 March 2024 amounted to £556,579, of which £86,345 were restricted funds and £470,234 were unrestricted funds. This is in line with the reserves policy target level of unrestricted funds which, based on budgeted expenditure for 2024/25 of £950,903, is between £237,725 and £475,451.

STRUCTURE, GOVERNANCE AND MANAGEMENT

Governing document

Home-Start Essex is a registered Charity, number 1170940 (Registered in England and Wales), and a Company Limited by Guarantee, number 10348139, as defined by the Companies Act 2006.

Home-Start Essex governing document a Memorandum and Articles of Association sets out the significant structural rules relating to the organisation. It covers matters such as the minimum and maximum number of trustees, the powers of trustees, terms of office, and how important meetings are managed. The document also outlines the charitable objects (purpose) of the charity, which is the frame of reference for many of the decisions the trustees will make.

HOME-START ESSEX LIMITED COMPANY LIMITED BY GUARANTEE

TRUSTEES' ANNUAL REPORT (continued)

YEAR ENDED 31 MARCH 2024

Governance

Home-Start Essex relies on a strong, effective board of trustees. They have a wide range of responsibilities, in ensuring that the charity complies with regulatory requirements and delivers on its charitable purpose. Our Board of Trustees, who are also Directors of the Charity for the purposes of the Companies Act, have overall responsibility for setting the strategy of the Charity. Our Chief Executive, working with the Senior Leadership Team is responsible for delivering the Board's vision and strategy and for its day-to-day operations.

The trustees annually review Board performance and make changes to the frequency and arrangements for Board meetings and as a result from January 2024 moved to reducing the number of Board meetings to four a year and for committees to the Board aligning to this new arrangement. Board meetings are now all held in person and we are grateful to the Essex Community Foundation for allowing us free use of their accommodation. Following a review of our committee structure in early 2023 we have now incorporated Safeguarding Adults and Children (this was previously a separate committee) into the Operations and Governance Committee with the aim of managing the capacity of both trustees and staff more effectively. This committee along with Finance and Business Development and Human Resources Management formally report to the Board at each Board meeting and operate under a Scheme of Delegation. The trustees ensure that Home-Start Essex complies with all requirements of its Agreement with Home-Start UK (HSUK), and with the Home-Start Quality Assurance standards. We are required to report regularly on our compliance with the Quality Standards and are subject to external Quality Assurance reviews. We are also required to adopt and implement all mandatory policies provided by Home-Start UK. Home-Start Essex also leverages Home-Start UK model policies and produces its own additional policies as necessary.

Recruitment and appointment of new Trustees

Home-Start Essex regularly reviews the skills of trustees and identifies any specific skills gaps, and we endeavour to actively recruit new trustees with those skills. We also take into consideration the need to have a succession plan, either by preparing existing trustees to take on lead roles, or by actively advertising for trustees, so that we reduce the risk of losing essential skills on the Board. In an attempt to increase the diversity of the board's membership we advertise widely for new trustees, and ensure, throughout the recruitment process, that all applicants from a wide variety of backgrounds have an opportunity to succeed.

The Board of Trustees has established procedures for recruiting and appointing trustees, including informal visits or discussions, formal application and a panel of trustees with the CEO, interview all prospective trustees to determine that they have the required skills to contribute to the charity's management and development. New appointments are ratified by the full Board of Trustees and co-opted to the Board and will hold office until they are duly elected to the Board at the next AGM in accordance with the Articles of Association. We have also introduced a new role of Special Advisor in order to strengthen and broaden the specialist support to our committees and the Board, for those who may not be able to commit to, or do not wish to have, a role as a trustee, or who may wish to consider this role in the future.

HOME-START ESSEX LIMITED
COMPANY LIMITED BY GUARANTEE

TRUSTEES' ANNUAL REPORT (continued)

YEAR ENDED 31 MARCH 2024

Induction and training of new Trustees

Home-Start Essex is committed to full induction and ongoing training of trustees. A comprehensive induction pack and plan is agreed with all new Trustees, tailored to individual needs and previous experience, which includes meeting with operational staff, and opportunities to meet with families and volunteers. A Trustee Code of Conduct is signed by all new trustees and under the new Home-Start UK Agreement, all trustees will be expected to complete the Home-Start UK induction within six months of becoming a trustee. The Chair meets regularly with trustees in order to continually learn, and provide development opportunities, in support of the organisation. All trustees have an annual review with the Chair of Trustees.

Arrangements for setting pay and remuneration of key management posts.

When determining the salaries for key management posts, trustees collect information about comparable roles in other voluntary organisations as well as across the Home-Start Federation. This information is used to benchmark the Charity's salaries, normally aiming to set them at a level that appears to represent the market average. The pay of the Chief Executive Officer comprises a single fixed salary point - i.e., no banding. The CEO's pay is reviewed annually. Each year, the Trustees will consider whether an independent review of salaries is necessary. In reviewing the Charity's Remuneration Policy and annual increments, the Trustees will consider available advice and best practice, including, but not limited to, the NCVO's guidance on "Setting and Communicating Remuneration Policies".

Risk management

The Board of Trustees have a duty to identify and review the risks to which the Charity is exposed and to ensure that appropriate controls are in place manage these risks and provide reasonable assurance against fraud and error. They have given careful consideration to the major risks to which the charity is exposed and are satisfied that the systems which they have established are effective in managing the risks.

The Board of Trustees reviews the Strategic Risk Register at least annually and to support the Board, each of the formal Board Committees takes a direct role in leading on the ongoing review of a group of identified risks from the register, which are reported to the Board at a minimum six monthly. At any stage as deemed relevant by trustees or the CEO and Senior Management Team there may be a more detailed review to test the effectiveness of our approach to risk management.

This report has been prepared in accordance with the special provisions of Part 15 of the Companies Act 2006 relating to small companies.

Approved by order of the Board of Trustees/Directors on 21 October 2024 and signed on its behalf by:

Anna Casbolt
.....

A Casbolt
Trustee

**HOME-START ESSEX LIMITED
COMPANY LIMITED BY GUARANTEE**

INDEPENDENT EXAMINER'S REPORT TO THE TRUSTEES

YEAR ENDED 31 MARCH 2024

I report to the charity trustees on my examination of the accounts of the company for the year ended 31 March 2024 which are set out on pages 13 to 26.

Responsibilities and basis of report

As the charity trustees of the company (and also its directors for the purposes of company law) you are responsible for the preparation of the accounts in accordance with the requirements of the Companies Act 2006 ('the 2006 Act').

Having satisfied myself that the accounts of the company are not required to be audited under Part 16 of the 2006 Act and are eligible for independent examination, I report in respect of my examination of your company's accounts as carried out under section 145 of the Charities Act 2011 ('the 2011 Act'). In carrying out my examination I have followed the Directions given by the Charity Commission under section 145(5)(b) of the 2011 Act.

Independent examiner's statement

Since the company's gross income exceeded £250,000 your examiner must be a member of a body listed in section 145 of the 2011 Act. I confirm that I am qualified to undertake the examination because I am a member of the Association of Certified Chartered Accountants, which is one of the listed bodies.

I have completed my examination. I confirm that no matters have come to my attention in connection with the examination giving me cause to believe that in any material respect:

1. accounting records were not kept in respect of the company as required by section 386 of the 2006 Act; or
2. the accounts do not accord with those records; or
3. the accounts do not comply with the accounting requirements of section 396 of the 2006 Act other than any requirement that the accounts give a 'true and fair view' which is not a matter considered as part of an independent examination; or
4. the accounts have not been prepared in accordance with the methods and principles of the Statement of Recommended Practice for accounting and reporting by charities applicable to charities preparing their accounts in accordance with the Financial Reporting Standard applicable in the UK and Republic of Ireland (FRS 102).

I have no concerns and have come across no other matters in connection with the examination to which attention should be drawn in this report in order to enable a proper understanding of the accounts to be reached.

Sandra Morrell

.....
Sandra Morrell FCCA
Edmund Carr LLP
146 New London Road
Chelmsford
CM2 0AW

21. October 2024

**HOME-START ESSEX LIMITED
COMPANY LIMITED BY GUARANTEE**

**STATEMENT OF FINANCIAL ACTIVITIES (INCLUDING INCOME AND
EXPENDITURE ACCOUNT)**

YEAR ENDED 31 MARCH 2024

	Note	Unrestricted Funds £	Restricted Funds £	Total Funds 2024 £	Total Funds 2023 £
INCOME FROM:					
Donations	2	15,316	-	15,316	16,196
Charitable activities	3	182,875	498,709	681,584	749,314
Investments: Bank interest		4,932	-	4,932	2,025
Other trading activities: fundraising	4	250,918	-	250,918	27,983
TOTAL INCOME		<u>454,041</u>	<u>498,709</u>	<u>952,750</u>	<u>795,518</u>
EXPENDITURE ON:					
Raising funds	5	141,920	-	141,920	3,753
Charitable activities	6	277,917	498,574	776,491	795,312
TOTAL EXPENDITURE		<u>419,837</u>	<u>498,574</u>	<u>918,411</u>	<u>799,065</u>
NET INCOME / (EXPENDITURE)		34,204	135	34,339	(3,547)
Transfers between funds		<u>-</u>	<u>-</u>	<u>-</u>	<u>-</u>
NET MOVEMENT IN FUNDS		34,204	135	34,339	(3,547)
Reconciliation of funds:					
Total Funds brought forward		436,030	86,210	522,240	525,787
Total Funds carried forward		<u>470,234</u>	<u>86,345</u>	<u>556,579</u>	<u>522,240</u>

The charity has no recognised gains or losses other than the results for the period as set out above.

The notes on pages 16 to 26 form part of these financial statements.

HOME-START ESSEX LIMITED
COMPANY LIMITED BY GUARANTEE
BALANCE SHEET
AS AT 31 MARCH 2024

		2024		2023	
	Note	£	£	£	£
CURRENT ASSETS					
Debtors	9	33,538		61,867	
Cash at bank		573,038		479,568	
		<u>606,576</u>		<u>541,435</u>	
CREDITORS: Amounts falling due within one year					
	10	<u>(49,997)</u>		<u>(19,195)</u>	
NET CURRENT ASSETS			556,579		522,240
NET ASSETS			<u>556,579</u>		<u>522,240</u>
FUNDS OF THE CHARITY					
Restricted funds	12		86,345		86,210
Unrestricted funds	13		470,234		436,030
TOTAL CHARITY FUNDS			<u>556,579</u>		<u>522,240</u>

For the period ending 31 March 2024 the company was entitled to exemption from audit under section 477 of the Companies Act 2006 relating to small companies.

Directors' responsibilities:

- i) The members have not required the company to obtain an audit of its accounts for the period in question in accordance with section 476;
- ii) The directors acknowledge their responsibilities for complying with the requirements of the Act with respect to accounting records and the preparation of accounts.

These financial statements have been prepared in accordance with the special provisions for small companies under Part 15 of the Companies Act 2006.

These financial statements were approved by the Trustees on21 October 2024.... and are signed on their behalf by:

Anna Casbolt

A Casbolt

Trustee

Company Registration Number: 10348139

The notes on pages 16 to 26 form part of these financial statements.

HOME-START ESSEX LIMITED
COMPANY LIMITED BY GUARANTEE
STATEMENT OF CASH FLOWS

YEAR ENDED 31 MARCH 2024

	Notes	Total 2024 £	Total 2023 £
Net movement in funds for the reporting period (as per the statement of financial activities)		34,339	(3,547)
Adjustments for:			
(Increase) / decrease in debtors	7	28,329	3,685
Increase / (decrease) in creditors	8	30,802	(31,366)
Cash flows from operating activities:			
Net cash provided by / (used in) operating activities		<u>93,470</u>	<u>(31,228)</u>
Cash flows from investing activities:			
Dividends, interest and rents from investments		-	-
Net cash provided by / (used in) investing activities		<u>-</u>	<u>-</u>
Change in cash and cash equivalents in the reporting period		93,470	(31,228)
Cash and cash equivalents brought forward		479,568	510,796
Cash and cash equivalents carried forward		<u>573,038</u>	<u>479,568</u>

The notes on pages 16 to 26 form part of these financial statements.

HOME-START ESSEX LIMITED
COMPANY LIMITED BY GUARANTEE
NOTES TO THE FINANCIAL STATEMENTS
YEAR ENDED 31 MARCH 2024

1. ACCOUNTING POLICIES

a) Basis of accounting

The financial statements have been prepared in accordance with the Financial Reporting Standard applicable in the UK and Republic of Ireland (FRS 102), Accounting and Reporting by Charities: Statement of Recommended Practice applicable to charities preparing their accounts in accordance with the Financial Reporting Standard applicable in the UK and Republic of Ireland (effective 1 January 2019) (Charities SORP FRS 102) and the Companies Act 2006.

Assets and liabilities are initially recognised at historical cost or transaction value unless otherwise stated in the relevant accounting policy notes.

b) Legal Status

The charity is a company limited by guarantee and meets the definition of a public benefit entity under FRS102. It is incorporated in England and Wales and its registered address is Maldon District Council, Princes Road, Maldon, England, CM9 5DL.

c) Income

Income from donations and grants, including capital and government grants, is included in incoming resources when these are receivable, except as follows:

When donors specify that donations and grants given to the charity must be used in future accounting periods, the income is deferred until those periods.

When donors impose conditions which have to be fulfilled before the charity becomes entitled to use such income, the income is deferred and not included in incoming resources until the pre-conditions have been met.

When donors specify that donations and grants, including capital grants, are for particular restricted purposes, which do not amount to pre-conditions regarding entitlement, this income is included in incoming resources of restricted funds when receivable.

HOME-START ESSEX LIMITED
COMPANY LIMITED BY GUARANTEE

NOTES TO THE FINANCIAL STATEMENTS (continued)

YEAR ENDED 31 MARCH 2024

d) Expenditure

All expenditure is accounted for on an accruals basis and includes VAT as the charity is not VAT registered. Governance costs are associated with the governance arrangements of the charity. Support costs are apportioned between the funds based on budgeted expenditure at the start of the year.

e) Fixed Assets

Capital items costing in excess of £1,000 are capitalised. Depreciation is calculated so as to write off the cost of an asset, less its estimated residual value, over the useful economic life of that asset by the straight-line method.

There were no capitalised assets at the year-end date.

f) Debtors

Trade and other debtors are recognised at the settlement amount due. Prepayments are valued at the amount prepaid.

g) Creditors and provisions

Creditors and provisions are recognised where the charity has a present obligation resulting from a past event that will probably result in the transfer of funds to a third party and the amount due to settle the obligation can be measured or estimated reliably. Creditors and provisions are normally recognised at their settlement amount.

h) Fund accounting

Funds held by the charity are either:

Unrestricted general funds – these are funds which can be used in accordance with the charitable objects at the discretion of the trustees.

Designated funds – these are unrestricted funds that the Trustees have set aside for specific designated purposes.

Restricted funds – these are funds that can only be used for particular restricted purposes within the objects of the charity.

HOME-START ESSEX LIMITED
COMPANY LIMITED BY GUARANTEE
NOTES TO THE FINANCIAL STATEMENTS (continued)
YEAR ENDED 31 MARCH 2024

2. DONATIONS

	Unrestricted Funds £	Restricted Funds £	Total Funds 2024 £	Total Funds 2023 £
General donations	15,316	-	15,316	16,196
	<u>15,316</u>	<u>-</u>	<u>15,316</u>	<u>16,196</u>
<i>Total 2023</i>	<i>16,196</i>	<i>-</i>	<i>16,196</i>	

3. INCOME FROM CHARITABLE ACTIVITIES

	Unrestricted Funds £	Restricted Funds £	Total Funds 2024 £	Total Funds 2023 £
Grants to support charitable activities	7,875	435,531	443,406	498,116
Contracts to provide charitable activities	175,000	63,178	238,178	251,198
	<u>182,875</u>	<u>498,709</u>	<u>681,584</u>	<u>749,314</u>
<i>Total 2023</i>	<i>205,994</i>	<i>543,320</i>	<i>749,314</i>	

4. INCOME FROM TRADING ACTIVITIES

	Unrestricted Funds £	Restricted Funds £	Total Funds 2024 £	Total Funds 2023 £
Art show - sales and sponsorship	220,961		220,961	-
Other	29,957		29,957	27,983
	<u>250,918</u>	<u>-</u>	<u>250,918</u>	<u>27,983</u>
<i>Total 2023</i>	<i>27,983</i>	<i>-</i>	<i>27,983</i>	

HOME-START ESSEX LIMITED
COMPANY LIMITED BY GUARANTEE

NOTES TO THE FINANCIAL STATEMENTS (continued)

YEAR ENDED 31 MARCH 2024

5. FUNDRAISING EXPENDITURE

	Unrestricted Funds £	Restricted Funds £	Total Funds 2024 £	Total Funds 2023 £
Art show costs	137,107	-	137,107	-
Other	4,813	-	4,813	3,753
	<u>141,920</u>	<u>-</u>	<u>141,920</u>	<u>3,753</u>
<i>Total 2023</i>	3,753	-	3,753	

6. CHARITABLE EXPENDITURE

	Unrestricted Funds £	Restricted Funds £	Total Funds 2024 £	Total Funds 2023 £
Service Delivery	-	9,673	9,673	16,858
Events	-	-	-	1,220
Staff costs	203,945	444,717	648,662	626,214
Home-Start UK Levy	12,000	-	12,000	12,000
Support costs:				
Rent and rates	9,600	-	9,600	11,940
Office costs	29,623	-	29,623	46,021
Equipment and materials	-	8,203	8,203	7,586
Travelling and expenses	-	31,265	31,265	26,670
Advertising	1,781	-	1,781	3,900
Training	-	4,716	4,716	6,596
Bank charges	66	-	66	72
Project costs	1,457	-	1,457	11
Other	6,843	-	6,843	23,786
Governance costs (note 5)	12,602	-	12,602	12,438
	<u>277,917</u>	<u>498,574</u>	<u>776,491</u>	<u>795,312</u>
<i>Total 2023</i>	283,120	512,192	795,312	

HOME-START ESSEX LIMITED
COMPANY LIMITED BY GUARANTEE
NOTES TO THE FINANCIAL STATEMENTS (continued)
YEAR ENDED 31 MARCH 2024

7. GOVERNANCE COSTS

	Unrestricted Funds £	Restricted Funds £	Total Funds 2024 £	Total Funds 2023 £
Independent examination	1,600	-	1,600	1,525
Accounts preparation	3,580	-	3,580	2,775
Payroll fees	5,046	-	5,046	4,512
Fees payable to Independent Examiner	10,226	-	10,226	8,812
Other professional fees	2,376	-	2,376	3,626
	<u>12,602</u>	<u>-</u>	<u>12,602</u>	<u>12,438</u>

8. ANALYSIS OF STAFF COSTS

	2024 £	2023 £
Wages and salaries	595,240	572,527
Social security costs	36,164	35,664
Pension costs	16,139	15,523
Staff expenses	1,119	2,500
	<u>648,662</u>	<u>626,214</u>

Staff costs are allocated between funds based upon the time spent by staff members on restricted charitable activities and administration.

None of the employees' emoluments exceeded £60,000.

None of the trustees or persons connected with them received any remuneration for their services.

The average number of employees during the year, by head count, was 39 (2023: 41).

The remuneration benefits of key management personnel totalled £49,874 (2023: £47,947).

HOME-START ESSEX LIMITED
COMPANY LIMITED BY GUARANTEE
NOTES TO THE FINANCIAL STATEMENTS (continued)
YEAR ENDED 31 MARCH 2024

9. DEBTORS

	2024	2023
	£	£
Trade debtors	29,167	60,434
Prepayments	1,433	1,433
Accrued income	2,938	-
	<u>33,538</u>	<u>61,867</u>

10. CREDITORS: Amounts falling due within one year

	2024	2023
	£	£
Trade creditors	1,934	1,298
Other creditors	2,969	143
Tax and social security	9,169	9,148
Accruals	8,556	8,606
Deferred income	27,369	-
	<u>49,997</u>	<u>19,195</u>

Deferred income relates to grants received that are specified for expenditure in a future period.

11. COMMITMENTS UNDER OPERATING LEASES

Total future minimum lease payments under non-cancellable operating leases are as follows:

	2024	2023
	£	£
Within one year	5,450	2,985
Between 2 and 5 years	-	-
	<u>5,450</u>	<u>2,985</u>

HOME-START ESSEX LIMITED
COMPANY LIMITED BY GUARANTEE
YEAR ENDED 31 MARCH 2024

12. RESTRICTED FUNDS

	Balance at 01/04/2023 £	Movement in resources:			Balance at 31/03/2024 £
		Income £	Expenditure £	Transfers £	
1) Basildon, Billericay & Brentwood NHS Health Inequalities Fund	-	2,651	(2,651)	-	-
2) BBC Children in Need	17,436	20,708	(32,294)	-	5,850
3) Chelmsford City Council Community Funding Scheme	-	5,620	(5,620)	-	-
Essex County Council:					
4) Community Initiatives Fund	350	1,000	-	-	1,350
5) Chelmsford Council Locality Fund	-	3,500	(3,500)	-	-
6) Co-Op Community Fund	1,265	-	(1,265)	-	-
Essex Community Foundation:					
7) Turncole Wind Farm Community Benefit Fund		5,000	-	-	5,000
8) Braintree District & Eastlight Community Fund and Jean & Peter Davey Charity Fund	7,824	-	(7,824)	-	-
9) Braintree District & Greenfields Community Fund	-	3,250	(3,250)	-	-
10) Daphne Woodward	-	6,861	(6,861)	-	-
11) Mid and South Essex Community Partnership	11,227	-	(11,227)	-	-
12) Provide Foundation	-	-	-	-	-
13) Sebright & Yellow Car Charitable Fund	-	3,342	(1,475)	-	1,867
14) Thriving Third Sector	8,250	10,000	(18,250)	-	-
15) Elijah's Pot	1,667	27,525	(22,239)	-	6,953
16) Essex Youth Trust	-	2,500	-	-	2,500
17) Garfield Weston	10,417	25,000	-	-	35,417
18) Home-Start UK	2,910	14,875	(10,717)	-	7,068
19) Mulberry Trust:	-	16,625	(4,125)	-	12,500
20) The National Lottery Community Fund	20,728	269,699	(290,427)	-	-
21) The National Lottery Community Fund - Awards for All	1,331	-	(1,331)	-	-
22) Neighbourly	556	-	(137)	-	419
23) The Places Foundation	-	5,000	-	-	5,000
24) Sir Jules Thorn Charitable Trust - Ann Rylands Grants programme	-	2,000	-	-	2,000
25) Southend City Council: UK Shared Prosperity Fund	598	38,613	(39,211)	-	-
26) Tesco Community Grant	1,652	1,375	(2,605)	-	422
27) Uttleford District Council: UK Shared Prosperity Fund	-	24,565	(24,565)	-	-
28) Uttlesford District Council	-	9,000	(9,000)	-	-
	<u>86,210</u>	<u>498,709</u>	<u>(498,574)</u>	<u>-</u>	<u>86,345</u>

HOME-START ESSEX LIMITED
COMPANY LIMITED BY GUARANTEE
NOTES TO THE FINANCIAL STATEMENTS (continued)
YEAR ENDED 31 MARCH 2024

12. RESTRICTED FUNDS (continued)

The purposes of the restricted funds are as detailed below:

- 1) Basildon, Billericay & Brentwood NHS Health Inequalities Fund: To fund a family support group plus programme in Basildon
- 2) BBC CIN: To fund Family Groups in Chelmsford, Witham, Basildon and Maldon.
- 3) CCC Community Scheme: To provide funds to contribute to a family support groups in Chelmsford.
- 4) ECC Community Initiatives Fund: To support four families in Castle Point and Rochford and provide a text service.
- 5) ECC Chelmsford Council Locality Fund: To train new Volunteer Family Support Mentors to support families in the North Chelmsford area.
- 6) Co-Op Community Fund: To contribute towards volunteer training costs.
- 7) ECF Turncole Wind Farm Community Benefit Fund: To deliver behaviour support sessions.
- 8) ECF Braintree District & Eastlight Community Fund and Jean & Peter Davey Charitable fund: To support families with preschool aged children through family wellbeing groups.
- 9) ECF Braintree District & Greenfields Community Fund: To fund a family support group in Braintree
- 10) ECF Daphne Woodward: To fund family holidays to families living in Essex.
- 11) ECF Mid & South Essex Community Partnership: To fund well-being support to families in Mid and South Essex.
- 12) ECF Provide: To contribute towards the Area Lead Co-ordinators salaries to oversea service delivery.
- 13) ECF Sebright & Yellow Car Charitable Fund: To purchase IT equipment to be used to deliver peer support groups and training to volunteers in West Essex.
- 14) ECF Thriving Third Sector: Fundings towards Basildon, Witham, & Maldon family support groups and to upskill the communications and marketing team.
- 15) Elijah's Pot: To contribute towards the Volunteer Co-ordinator's salary & to fund a family SEND group.
- 16) Essex Youth Trust: To contribute towards core costs.
- 17) Garfield Weston: To contribute towards core costs.
- 18) Home-Start UK - Funding towards core costs, wellbeing and family support groups and volunteering.
- 19) Mulberry Trust - Funding core costs and family support group.
- 20) National Lottery - Family support services, volunteers and core costs were funded by:
 Reaching Communities/Partnerships, Reaching Communities/Partnerships Cost of Living Fund and Community Organisations Cost of Living Fund.
- 21) National Lottery - Awards for All: To fund a family support group in Uttlesford.
- 22) Neighbourly: To contribute towards volunteer training and appreciation.
- 23) The Places Foundation: To provide wellbeing services.
- 24) Sir Jules Thorn Charitable Trust - Ann Ryland Grants Programme:
 A contribution towards administrative staff salaries.
- 25) Southend City Council - UK Shared Prosperity Fund: For the Building Stronger Futures in Southend project.
- 26) Tesco Community Grant - To contribute towards our family support group and wellbeing services.
- 27) Uttlesford District Council - UK Shared Prosperity Fund: For the Building Stronger Futures in Uttlesford project.
- 28) Uttlesford District Council: To fund home-visiting volunteer support in Uttlesford.

HOME-START ESSEX LIMITED
COMPANY LIMITED BY GUARANTEE
NOTES TO THE FINANCIAL STATEMENTS (continued)
YEAR ENDED 31 MARCH 2024

12. RESTRICTED FUNDS

Prior year restricted funds movement:

	Movement in resources:				
	Balance at	Income	Expenditure	Transfers	Balance at
	01/04/2022				31/03/2023
	£	£	£	£	£
1) ABSS	-	70,960	(70,960)	-	-
2) BBC Children in Need	17,194	46,318	(46,076)	-	17,436
Essex Community Foundation:					
3) The Henry Smith Charity	15,000	-	(15,000)	-	-
4) Daphne Woodward	-	8,136	(8,136)	-	-
5) Neighbourly	700	1,000	(1,144)	-	556
6) Mid and South Essex Community Partnership	3,478	36,976	(29,227)	-	11,227
7) Braintree District & Eastlight Community Fund and Jean & Peter Davey Charitable Fund	750	25,670	(18,596)	-	7,824
8) Provide Foundation	-	19,500	(19,500)	-	-
9) Thriving Third sector - Digital Development	-	13,110	(4,860)	-	8,250
10) Fowler, Smith & Jones	-	3,000	(3,000)	-	-
11) Garfield Weston	-	25,000	(14,583)	-	10,417
Mulberry Trust:					
12) Mulberry - Core	1,667	8,333	(10,000)	-	-
13) Mulberry - Carver Barracks	-	5,177	(5,177)	-	-
14) Uttlesford District Council	-	8,250	(8,250)	-	-
15) ECC DC Locality Fund	-	6,981	(6,981)	-	-
16) ECC - Thriving Third Sector Fund	-	1,000	(1,000)	-	-
17) CCC - family group	2,500	-	(2,500)	-	-
18) Rochford District Council	-	1,000	(1,000)	-	-
Home-Start UK:					-
19) Pears Recovery and Resilience	8,420	-	(8,420)	-	-
20) Masonic	850	-	(850)	-	-
21) A Warm Spaces Cost of Living Award	-	1,000	-	-	1,000
22) Brook Trust	-	2,800	(1,250)	-	1,550
23) Volunteering Futures	-	5,000	(4,640)	-	360
National Lottery :					-
24) National Lottery Community Fund	-	211,197	(190,469)	-	20,728
25) Awards for All	3,940	9,999	(12,608)	-	1,331
26) Essex Youth Trust	583	2,917	(3,500)	-	-
27) Community Initiatives Fund	-	1,743	(1,392)	-	350
28) Co-Op Community Fund	-	1,265	-	-	1,265
29) The Places Foundation	-	5,000	(5,000)	-	-
30) Southend City Council: UK Shared Prosperity Fund	-	5,238	(4,640)	-	598
31) Tesco Groundwork UK (SR)	-	1,000	(98)	-	902
32) Tesco Groundwork UK (WB)	-	750	-	-	750
33) Anonymous	-	15,000	(13,333)	-	1,667
	<u>55,082</u>	<u>543,320</u>	<u>(512,192)</u>	<u>-</u>	<u>86,210</u>

HOME-START ESSEX LIMITED
COMPANY LIMITED BY GUARANTEE
NOTES TO THE FINANCIAL STATEMENTS (continued)
YEAR ENDED 31 MARCH 2024

12. RESTRICTED FUNDS (Prior year continued)

The purposes of the restricted funds are as detailed below:

- 1) ABSS: To fund a home-visiting volunteer service for families within Southend.
- 2) BBC CIN: To fund Family Groups in Chelmsford, Witham, Basildon and Maldon.
- 3) ECF The Henry Smith Charity: To fund core costs.
- 4) ECF Daphne Woodward: To fund family holidays to families living in Essex.
- 5) ECF Neighbourly: To fund the purchase of food & basic essentials to families in Essex.
- 6) ECF Mid and South Essex Community Partnership Grants Programme: To fund well-being
- 7) ECF Braintree District & Eastlight Community Fund and Jean & Peter Davey Charitable fund: To support families with preschool aged children through family wellbeing groups.
- 8) ECF Provide Foundation: To fund core costs
- 9) ECF Thriving Third Sector Fund: To upskill the communications and marketing team
- 10) Fowler, Smith, & Jones: A contribution towards core costs including central overheads.
- 11) Garfield Weston: A contribution towards core costs including central overheads.
- 12) Mulberry - Core: Funding towards the Fundraising and Marketing manager's salary.
- 13) Mulberry - Carver Barracks: To run a parent support group in Saffron Walden, for a period of two school terms.
- 14) Uttlesford District Council: To fund home-visiting support in Uttlesford.
- 15) ECC - Locality Fund: To fund the costs of a family group delivered in the St Andrews ward, in Chelmsford.
- 16) ECC - Thriving Third Sector Fund: Thrive programme bursary
- 17) Chelmsford City Council: contribution towards the delivery of 2 family groups in Chelmsford.
- 18) Rochford District Council: A contribution towards core costs of service delivery in Rochford.
- 19) Home-Start UK-Pears Recovery & Resilience: To contribute towards IT development.
- 20) Home-Start UK-Masonic: To fund our Big Hopes Big Futures (BHBF) school readiness programme.
- 21) Home-Start UK: Contributing towards creating warm spaces for families during the winter.
- 22) Home-Start UK: Learn, Test, Change Governance Groups: In support of The Chair's participation in all learning group discussions on supporting communities.
- 23) Home-Start UK: To attract and recruit new volunteers through community engagement and promotion.
- 24) National Lottery Community Fund: To fund home-visiting, well-being and family groups throughout Mid, South and West Essex.
- 25) National Lottery Awards for All: To fund a family group in Uttlesford.
- 26) The Essex Youth Trust: To contribute towards core costs.
- 27) Community Initiatives Fund: To fund a Family Support Worker working with complex families, in Castle Point and Rochford.
- 28) Co-Op Community Fund: Contribute towards cost of training and retention of family support volunteers.
- 29) The Places Foundation: To support the delivery of volunteer training and support for our volunteer co-ordinator.
- 30) Southend City Council: To deliver a range of impactful volunteering opportunities throughout Southend.
- 31) Tesco - Groundwork UK (SF): To purchase school readiness resources in the Saffron Walden area.
- 32) Tesco - Groundwork UK (SF): To deliver one to one well-being support to families.
- 33) Anonymous - Allocated to funding to digital development and to contribute towards the salary of the volunteer co-ordinator.

HOME-START ESSEX LIMITED
COMPANY LIMITED BY GUARANTEE
NOTES TO THE FINANCIAL STATEMENTS (continued)
YEAR ENDED 31 MARCH 2024

13. UNRESTRICTED FUNDS

	Movement in resources:			
	Balance at 01/04/2023	Income	Expenditure	Gains, losses & transfers
	£	£	£	£
General unrestricted funds	423,068	454,041	(406,875)	
Designated funds	12,962	-	(12,962)	-
	<u>436,030</u>	<u>454,041</u>	<u>(419,837)</u>	<u>-</u>
				<u>470,234</u>

Designated funds relate to donations received that are intended for use in specific areas of Essex.

14. ANALYSIS OF NET ASSETS (between restricted and unrestricted funds)

	Tangible fixed assets	Other net assets	Total 2024	Total 2023
	£	£	£	£
General unrestricted	-	470,234	470,234	423,068
Designated	-	-	-	12,962
Total unrestricted	<u>-</u>	<u>470,234</u>	<u>470,234</u>	<u>436,030</u>
Restricted	-	86,345	86,345	86,210
	<u>-</u>	<u>556,579</u>	<u>556,579</u>	<u>522,240</u>

15. RELATED PARTY TRANSACTIONS

One trustee was repaid for expenses of £378 in the year (2023 - £83).

16. COMPANY LIMITED BY GUARANTEE

Every member of the company undertakes to contribute to the assets of the Company in the event of the same being wound up during the time he/she is a member, or within one year afterwards, for the payments of the debts and liabilities of the company contracted before the time at which he/she ceases to be a member and of the costs, charges and expenses of winding up the same, and for the adjustments of the rights of the contributors among themselves such amount as may be required not exceeding one pound.