

# Annual Report

April 2024 - March 2025



**Back to Front CIO - Registered Charity**  
**Number 1170920**  
Established 2011 as a community group



## Chair's Welcome:

On behalf of the Back to Front Trustees I would like to offer another warm welcome to our annual report, our eighth since we became a registered charity in December 2016 (Back to Front CIO - Registered Charity Number 1170920).

This reporting period we put to one side the frustrations and setbacks we had experienced last year and took the decision only to focus on key priorities and projects we knew we could begin independently, and that we knew were important to our core Harehills growers. We also agreed to continue to allow more time throughout the year for future planning, to create opportunities for trustee training in useful practical activities that can be opened up to our core growers, and for reflection to examine our thoughts and feelings on the progress and direction we are taking at each stage.

We were feeling newly inspired by some good examples of community growing elsewhere in Leeds, so we began looking for funding so that we could continue to develop our knowledge and skills of working with a variety of fruit and nut trees and invest in the future of the lovely **Harehills Park Orchard** as part of our **Gateways to Growing project**. The council had listened to some local residents who had been requesting that the gate to the Orchard is open more so we hoped to support this so that that the Orchard space could be enjoyed by more people.

We then turned our attention to running our annual seasonal sessions where we invite core volunteers and the wider

community to get together for our **Spring educational skill building at Junior Sports Hub (JSH)**, a variety of seasonal activities at **Harehills Park**, **Autumn maintenance sessions at the Ashton Road Pollinator Planter** and our **Winter herbal uses session at the Thackray Museum of Medicine**.

As in previous years we prioritised networking and connecting with other partner organisations such as the **RHS** and **Fruit Works co-operative**. We also committed



to continuing to use our knowledge and experience to support the local **Neighbourhood Forum**. We spent lots of time listening to ideas and feedback from those in our community, this was especially significant after the local unrest in the summer. Emotions were heightened and residents were keen to share their thoughts and perceptions on greenspaces with us.

In April 2024 we were told the sad news that one of our regular volunteers and keen gardener **Chas** had passed away, and in December 2024 that another volunteer **Jo** was extremely ill. Our Back to Front volunteers all mean such a lot to us and firm friendships have blossomed and grown through the years of sharing seeds, skills and stories at organised action days, workshops, seasonal sessions, and occasionally through chance meetings and encounters when watering and maintenance tasks bring likeminded folk together. We will remember Chas fondly, especially when the fruit trees and daffodils he helped to plant begin to bloom each year and make us smile.

Thanks to all our loyal and inspiring local growers, especially **Zoe, Virginia, Jonathan,** and **Terry**, for getting stuck in with such enthusiasm and those core members who participate in the **Harehills Neighbourhood Forum**. Thank you again to **Trisha** for thinking of us every year and donating her tomato plants and the **RHS** for their generous donation of herbs and plants for planting in the JHS garden and giving out to growers at our spring plant share. Thank you to our fantastic partners this year, **Junior Sports Hub** and the **Thackray Museum of Medicine** for their openness and generosity towards the local community. Thank you to **Climate Action Leeds** for supporting our plans for the Orchard. Thank you to **Leeds City Council**, especially **Councillors Salma and Asghar** for helping us to explore ideas around replacing the Ashton Road Planter.

Thank you to our Back to Front Trustees: co-chair **Karen**, treasurer **Peter**, secretary **Katy**, and **Adam** for everything each of you did this reporting period to keep our small charity successful and sustainable. Finally, thank you as always to my husband **Ben and our growing boy**, for continuing to support us in both rain and shine, and helping to keep me growing and learning.

This reporting period we all worked hard to get everything into place to allow us to believe that our latest ideas and efforts will take root so we can continue to grow in hope and confidence so that more places and spaces will blossom in the future.

***Katie Greaves, Co-Chair of the Trustees of Back to Front CIO.***





## Introduction: **Preparing the Ground**

This reporting period we were in the third year of our five-year Gateway to Growing project which we began working on as part of our sustainable Covid recovery plan. Our key priorities remain outdoor education, community gardening, networking, and research and our two main aims this year were to:

- Future proof greenspaces in Harehills to allow for more fruitful community growing
- Provide more educational skill building and networking opportunities for local trustees.

With this in mind, we then divided our focus for this reporting period into three distinct strands of work, these were:



1. **Maintaining fruitful futures - investing in the orchard,**
2. **Seasonal sessions - firm favourites and learning new skills,**
3. **Digging deeper – networking, forum, and consultations.**

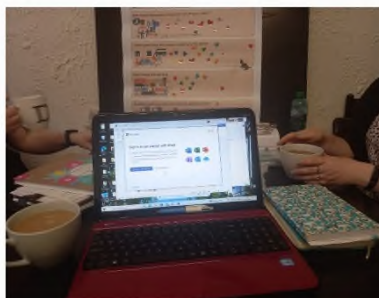
Last year each of the more experienced local trustees took responsibility for leading, planning and developing one of the strands of work. Throughout the reporting period they communicated ideas, plans, progress, and any issues with the other project lead trustees so that we were all kept in the loop and could support each other when required. At the end of the reporting period the lead trustee then wrote about their strand of work for our Annual Report, and we reflected on the outcome as a group. This arrangement worked well for us to manage our workload as volunteers, and it made clever use of our individual skills. It also allowed for personal growth and development too, so we decided to repeat this way of working again.

After identifying our priorities for the year, we agreed Katy would be focusing on our **Maintaining fruitful futures** priority and planning our activities in the orchard, all local trustees wanted to be involved with developing the **Seasonal sessions** and Katie and Karen would team up and focus on **Digging deeper** to support our third strand of work.

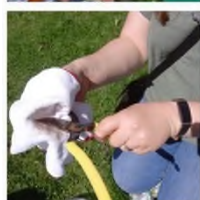




All three of our areas of focus this year involved a lot more of the unseen planning and behind the scenes work than in previous years, but we were still able to organise plenty of opportunities to connect with our local growers and reach new people through our seasonal sessions. We also wanted to concentrate on local networking this year as we already know from our years of lived experience and involvement with Back to Front and Harehills in Bloom in the area, that a lot of the barriers faced by residents are part of a much larger systemic problem. We continued to work closely with the **Harehills Neighbourhood Forum** and this year we supported the ongoing local research and consultations with Karen leading on a consultation event in Banstead Park.



Activities such as tool maintenance and scything had previously been requested by our core growers, and we were fortunate to have these skills and knowledge in house. We began by identifying the three most requested and useful skill building activities for this year, **Espalier fruit tree training, tool**



**maintenance, and scything.** Since we were still running all our seasonal sessions ourselves this reporting period, we expanded some of our existing annual activities to include the skill sharing opportunities for our local trustees to participate in too rather than just running the session. This way we could share these useful practical skills, knowledge, and experience between us at the sessions and then share these skills more widely as part of our sessions in the future.

Another popular session we wanted to repeat was our **Herbal Uses workshop** which we held at the **Thackray Museum of Medicine**. Feedback from our growers after our session last year was so positive, and they really enjoyed having an opportunity to use herbs in different ways, so we planned to end the calendar year with a repeated session in the community space at the Thackray Museum of Medicine. After all the frustrations and setbacks last reporting period we felt confident and optimistic about what we had set out to prioritise this year.



# 1

## Maintaining fruitful futures - investing in the orchard



**We were extremely excited to be focusing on future proofing the beautiful Harehills Park Orchard.** This orchard had been planted by the council in 2014 but then left locked for many years and the fruit and nut trees not regularly maintained so this focus fitted well with our ongoing **Gateways to Growing project** and we felt could support the council and our aims as a charity by learning how to maintain the established trees. The council set out a plan to make the space more accessible by opening the gate in the day and locking it at night with a coded padlock. We were told we could access the Orchard at weekends using the code.

We hoped that a well-maintained Orchard could be developed further for future workshops, and the wider community could use it as a space for growing opportunities and events. Katy had already drawn a map of the orchard to help us identify the locations of the **46 fruit and nut trees**, so our next step was to try to get support and funding and keep the Harehills Park Orchard on the blossom map in the future.

## Trustee Katy explains how we proceeded with this priority:

“In August, we had an **orchard and tool maintenance session**. We pruned the trees, mulched with woodchip and then I spent some time teaching the other trustees some techniques for cleaning, sharpening, and oiling our tools. We also used the session to discuss and finalise our plans and dreams for the space, so we were ready to apply for funding.



In the same month, we applied for a grant from **Climate Action Leeds**, who were offering grants of up to £5000 to local groups. We thought this would be a fantastic opportunity to consolidate the ideas we have had for the orchard and get a plan together for 2025.

- We would like to fund the maintenance and improvement of Harehills Park Orchard, and plant and maintain a native wildflower meadow.
- We will run workshops in hedging, fruit tree pruning, coppicing, and scything over the course of 2025.
- We would also like to have a community celebration day of the orchard to engage local residents with the space.
- We will also be organising low key maintenance sessions throughout the year for volunteers to help with upkeep.
- We will pay Leeds based educators to deliver workshops on hedging, pruning, and coppicing, and use knowledge gained to deliver our own sessions in the future and build learning within the community.

## Here we laid out how the money will benefit the local area:

- We hope to increase biodiversity in Harehills Park by planting native species.
- The wildflower meadow and native hedge will provide habitat and food for insects, birds, and mammals.
- After a difficult year in Harehills, our project will build community cohesion in the area.
- We want to foster a connection and respect for the natural world and build learning around local food security and resilience in the face of climate change.
- We will issue brief questionnaires at the end of each session to monitor attitudes of attendees.”







Back to Front have always offered free sessions and workshops to all participants who would like to attend so we agreed from the start **that we were keen to cover the whole cost of the educational sessions in the Harehills Park Orchard**. Our growers were excited when we shared this proposed project, and Trustees discussed the possibility to have this focus as part of a longer-term priority for us as we recognised that there is so much that we could do in the space to develop it as another local Hub from where we can run sessions so participants can experience hands on learning.

We welcomed an approach from **Walk it Ride (part of Active Leeds)** who wanted to set up a Bike Hub and place a container within the orchard from where they could store and give out bikes. This was a good opportunity to share resources, potentially share a little storage space for tools, and bring more regular activity to the space to help with ongoing security.



One issue we identified that we wanted to work together with the council on, was the best way to genuinely make this a space for everyone to enjoy. **The arrangement for locking the Orchard was not working**, the padlock vanished so the space was then open permanently and had started to be misused. One session we collected around 30 bags of dog faeces before we could begin our planned activity. We also noticed some of the trees had been damaged by dogs, so we hoped to collaborate with the council and help find a balance between making the Orchard accessible but at the same time protect it from ASB and excessive dog fouling.



Towards the end of the calendar year Katy attended some **networking and funder meetings** and after these **we found out in December 2024 that we had been successful in our Climate Action Leeds bid**. We then spent the winter months contacting Leeds based groups like **Fruit Works and Leeds Coppice Workers** to collaborate with us to organise a programme of events and activities that matched our needs, to begin in Autumn 2025, within the budget we had received.







**Over the years we have run a variety of sustainable and educational seasonal sessions, action days, pop ups, and workshops around Harehills.** Each reporting period we attempt to find a balance between revisiting what worked last year and introducing new activities so that we are always able to consider what our core growers wish to learn, make these as accessible as possible and respond to the needs of the environment where we will be holding the session.

We also continued to consistently post on **social media** and created instructional content that was filled with useful techniques and tips for people to try at home. Karen shared other relevant posts and aspirational examples from elsewhere to inspire and help people visualise what they might be able to achieve in their own gardens. We also used our Back to Front page as a way to reach our growers when we were advertising our seasonal activities which we then shared widely on local community pages. After the activity we would then collate our photographs and document the outcomes so we could record key information to ensure it was available for any growers who could not attend the session.



**Trustee Karen writes about the importance and benefits of these educational seasonal sessions for our volunteers and trustees:**

“Now 4 years into our guardianship of the **Harehills Park Orchard and planting the Horseshoe Meadow**, this year has been about maintenance and indeed learning new skills to equip us to do this. One of our members who was experienced in **scything** showed other Back to Front volunteers how to cut the overgrown meadow. It

was a wonderful way to spend a few hours and drew in interested passers-by including a gentleman originally from Pakistan, who was keen to try using a long-handled scythe which was different to the short scythe he remembered using back home.



**Gardening and environmental management are threads which weave through many different cultures.** We all need to grow food. Whether we use an adz to till the earth, a scythe to cut the grass, or a bill hook to prune trees, every culture has a version of these tools, slightly tweaked to suit varying conditions, but nevertheless recognisable to most folk who have had some experience of gardening or agriculture. This is probably why whenever we are out in the community digging the earth, cutting hay, or tending trees we draw the attention of folk from many different communities. The common link is the shared interest in growing.



Keeping with the orchard theme, we ran a session with volunteers to retrain the **espalier fruit trees at the JSH community garden.** Originally a lorry yard, bound by buildings and ugly security fencing, Back to Front planted several apple trees and a fig tree in planters with the aim of creating a fruiting green wall to mask the steel railings. We ran a successful session with Back to Front volunteers, pruning and re tying branches to the fencing. Hopefully, we will create a green fruiting wall that will provide young people at JSH with the opportunity to harvest apples and figs. This will take several years of branch training, but each session will be another opportunity to demonstrate and share skills with future volunteers.”



Everything we do in our educational seasonal sessions aims to **build skills and confidence** so our attendees and local aspiring growers might try it again at home.

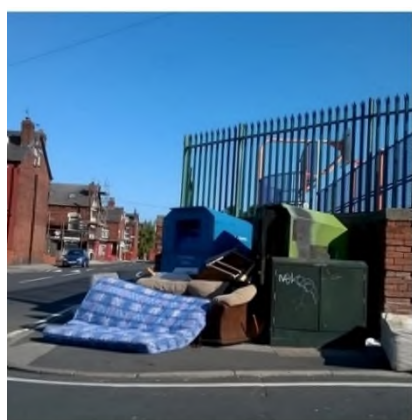
We have also found one of the most successful things we can do is we send them away with something that is **ready to grow at home** that we have prepared or potted as part of the spring maintenance session. This helps us to **remove some of the barriers to locals growing food** as it ensures that the plant already has a good size pot or potato bucket filled

with enough compost so it has the right conditions to grow, as we are aware the participant might struggle to access garden equipment, tools or compost of their own at home. Each year Karen has delivered a variety of plants to the doorsteps and gardens across Harehills so that herbs, potatoes, tomatoes, beans can be given the best start and then left to thrive in eager hands.



Responding to our core growers requests we ran the popular **Herbal Uses Winter workshop at the Thackray** for the second time, and it was just as well received as the first. It was such a positive way of using what we grow in our gardens and enabled some of our growers who are not well enough to attend the more physical sessions to stay connected.

We also repeated our longest running activity, the **Autumn Ashton Road Pollinator Planter maintenance session**. The planter needs replacing and we spoke to our local Councillors who originally funded it. From the start we had asked for a permanent structure, but a wooden structure was installed. As with any wooden structure after 7 years and despite regular maintenance and mending sessions, the planter really needs replacing. We have asked for a



permanent structure as its presence has proven that caring for this forgotten corner stopped fly tipping and has been much appreciated by locals.

**We think it deserves to be rebuilt for a brighter greener future.**

**Trustee Karen sums up the spirit of our local Back to Front growers:** “We feel blessed to have a group of stalwart volunteers who will turn out to support maintenance sessions and bring along friends to join in. We thank them very much. One of those volunteers was **Charles Robert Watson** or 'Chas' who sadly passed away this year. We will miss the unassuming way he generously shared his gardening knowledge. He filled his small garden with tree seedlings which he carefully nurtured into saplings ready to be planted across Harehills. The trees that he helped to plant will keep him in the memory of all those who volunteered alongside him and we are thankful for the time he chose to spend with us. **Rest in tree dappled peace Chas.**”





**We recognise it takes a certain amount of strength, confidence, and commitment to begin to grow food.** In an area of high deprivation, the barriers and obstacles are further heightened by being time, money, and energy poor. **The daily struggle can make it hard to dream or invest in growing.**

People living in Harehills have told us that available outside space is small, local shops do not sell gardening items and transport options to places that do are limited. They also fear plants or food from the plants might be stolen and people have said to us that they feel isolated from their neighbours. It requires a bit of each of those worries to resolve to find the motivation, plus practical and physical action, stability, and hope for the future.

Early on we had recognised the importance of identifying these obstacles to front garden food growing and finding different ways to overcome them. As a small group of enthusiastic locals, we had to be creative and try raise aspirations but **we had to think bigger if we were to meaningfully support more people to grow food at home and succeed to break down some of the remaining barriers caused by the larger systemic failings** that were out of our control as a small, volunteer run, local charity.

Our work done through Back to Front over the years has equipped the three local trustees and our growers with a variety of skills and knowledge around food growing and maintenance in an urban environment such as small garden design and crop rotation, vertical gardening, pruning and tree management, espalier training, tool maintenance, scything and meadow management, and herbal crafts. We have also blossomed as charity trustees and we are now confident in seeking and applying for funding bids, running our social media for communication and creating content, leading on community consultation work, events planning, and in risk assessing, policy writing and updating.

Back to Front volunteers have gone on to play an active role in setting up **Harehills Neighbourhood Forum**. We had agreed to attend Forum meetings, help with local consultation events by designing the banners and running interactive activities. As part of this local networking push Katie and Karen also joined **the**

**Harehills Neighbourhood Forum Environment and Community Safety working groups** plus attended local **PACT meetings**. This is because we believe that much of the decline of Harehills has been due to a total lack of strategic planning for Harehills that has genuinely looked at the environmental impact of developments on residents of Harehills.





As part of the **Environment and Community Safety working groups**, we led the focus group workshops and supported other networking opportunities. We spent lots of time listening to ideas and feedback from people who attended the **community event in Banstead Park**. This was especially significant after the local unrest in the summer and highlighted the fact that environmental wellbeing cannot be tackled in isolation as it is deeply impacted by many other social factors, such as failing infrastructure, negligent landlords and businesses and low aspirations. If you are worried about affording to pay your rent and feed your family, horrified by the rats running around in your yard and frightened of things being stolen or damaged, gardening becomes impossible. However, it is clear when talking to most residents, that **there is a deep yearning for an environment which is greener and more welcoming**, it is just that people are overwhelmed by life in general and do not know where to begin. Conversations and feedback confirmed much of what we feared and the neglected gardens and greenspaces were a concern to most people we spoke to.



Another problem we noticed locally was that shrubs and hedges around Harehills were getting blamed for rats and attracting drug dealing activities by being used to hide drugs. We were horrified when we discovered Community Payback had been tasked with butchering hedges in Harehills in April and May 2024. This was without the knowledge or permission of residents

and people working for the police and council were behind this initiative to cut the few remaining hedges and shrubs in the area rather than improve policing or address the prevalent litter issues and drainage network that no longer gets routinely flushed to help keep rodent populations under control.

We started looking again at the wider issue of neglected gardens and greenspaces. Often yards are concreted over or left full of previous tenants unwanted household goods. New tenants, who are often transient and only stay a few months, struggle to deal with this inherited dumping, let alone think about sinking money and effort into garden improvements. **We are not expecting perfection but want to think about how we can nurture greener**



**neighbourhoods that support resilience and encourage progress.** As many households have no yard at all we want to see the council getting overlooked and neglected green spaces back into shape or developed for potential food growing.

**We linked with RHS** who approached us wanting to reach more people. We know providing plants in pots can be the start and we thank Zoe who was our link grower. **By supporting community growing opportunities like this, local urban greening research and being involved in planning for the future of Harehills, we hope to support an area that grows together in every sense.**





Our hope is that the experience, knowledge, and skills we have gained will contribute to the **Harehills Neighbourhood Forum Priorities Statement**, a document which, when complete, will inform future Neighbourhood Development Plans. We hope that this will finally start to address the imbalance from decades of systemic failings, so that gardens and greenspaces can be encouraged rather than taken out of circulation and allowed to be concreted over. **This ambition sits well with our Charity Aim:**

- to advance the education of the public in general (and particularly amongst people living in areas of high deprivation) on **the subject of growing food in urban spaces especially front gardens**
- **to promote research for the public benefit in all aspects of that subject** and to publish the useful results, through community learning, food growing and workshops.



**Back to Front, like many volunteer led groups in Harehills, must grow against the odds.** Unfortunately, a summer of unrest put Harehills in the news for all the wrong reasons yet again and reminded the wider community of the plight of people who are marginalised and continue to be overlooked and poorly supported by services. Local **councillor Mothin Ali** and our own **Adam Aslam** went to help on the night along with young people from the area who tried their best to be voices of calm and reason.

We joined them to support a **Unity event** in the aftermath, and it was clear that most people agreed that there were systemic issues that needed addressing before the amazing efforts of local volunteers who work to build community inclusion, address food poverty and improve the local environment would see their efforts make any real impact. It goes so much deeper, and many small groups are working against a tide that is out of their control. Using our years of local knowledge we will continue to challenge local council policy that misses the mark and fuels the discontent we all saw on the news. **Local government needs to play its part by listening to and supporting the efforts of communities volunteering for change and fulfilling their own responsibilities for the strategic improvement and maintenance of the area.**

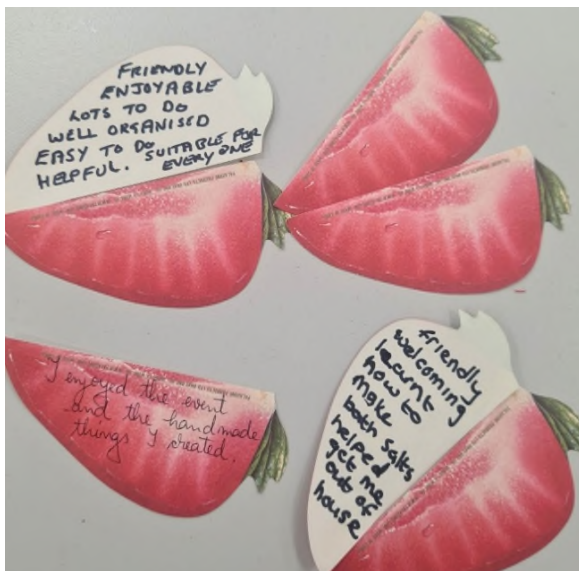
	<b>Calendar of our activities in detail: April 24 - March 25</b>
April 2024	<p>22<sup>nd</sup> April - Supporting the Harehills Neighbourhood Forum (HN) – meeting.  <b>Ashton Road Planter checked.</b>  <b>Planning - Harehills Park (HP), Harehills Lane (and future Edgeware Green) Wildflowers idea.</b>  <i>Found out about Chas passing away.</i></p> 
May 2024	<p>11<sup>th</sup> May - HN Forum planning session at the Thackray.  <b>20<sup>th</sup> May – Back to Front (BtoF) Planning Meeting.</b>  28<sup>th</sup> May - HN Forum event Banstead Park.</p>
June 2024	<p>17<sup>th</sup> June - HN Forum meeting/reflection.  <b>23<sup>rd</sup> June - Spring Junior Sports Hub (JSH) maintenance session/plant share.</b></p>
July 2024	<p>15<sup>th</sup> July - JSH mural reveal, discussed big planter and tabletop planter ideas.  <b>21<sup>st</sup> July - JSH Espalier and planter growing session.</b>  <b>Planning - summer pruning session.</b>  <i>Summer of unrest!</i> Trees at the Ashton play area damaged, then large scale disturbances in the area. We attended Unity events and listened to suggestions from residents about planting locally so something positive can come out of the ashes.</p>
August 2024	<p><b>11<sup>th</sup> Aug - Summer pruning session.</b> Orchard planning and mapping - updated, plus trustee tool maintenance.  LCC Banstead Park consultation (<i>findings Nov 24</i>).</p>
September 2024	<p><b>15<sup>th</sup> Sept - Autumn Ashton Play area planter maintenance.</b>  22<sup>nd</sup> Sept and 23<sup>rd</sup> Sept forum – we ran workshops for Community Safety and Environment.  <b>30<sup>th</sup> Sept – BtoF Meeting - Evaluation/planning ahead for 2025 and draft annual report update and agreeing. Apply for funding for orchard.</b></p>
October 2024	<p>9<sup>th</sup> Oct – HN Forum meeting.  10<sup>th</sup> Oct - Networking Thackray Zoom workshop.  Next year priority – Community apple day event.</p>
November 2024	<p><b>3<sup>rd</sup> Nov – HP scything and seed scattering session.</b>  <b>Neglected greenspace push.</b>  <b>Planning HP orchard winter pruning session (do before March next year)</b>  <b>Own Garden evaluations/plan.</b></p>
December 2024	<p><b>8<sup>th</sup> Dec - Seasonal craft/herbal uses at the Thackray.</b>  <i>Found out Jo Hume ill.</i>  <b>Got funding for the orchard!</b></p> 
January 2025	<p><b>20<sup>th</sup> Jan - Planning meeting plus annual return submission.</b>  <b>Winter/spring push- emails and plan action days for 2025:</b>  <b>Katie/Karen/Katy/Adam ideas to overcome local challenges.</b></p>
February 2025	<p><b>Next year tree planning: Orchard and Compton coppice action days.</b> Own growing - microgreens or seedball experiments.</p>
March 2025	<p>15<sup>th</sup> March - Community Iftar at JSH.  <b>23<sup>rd</sup> March - JSH spring maintenance session and potato share.</b></p>

## Conclusion and Reflection

After seeing the value throughout the last reporting period, we scheduled some time for breathing space at a few points during the year where there might be a natural pause to allow Trustees an opportunity for reflection. This helped us continue to get the balance right to aid future planning and ensure trustees did not get overwhelmed by our extra commitments and the stresses of living in an area that is defined by ongoing systemic neglect, social economic breakdown, and attendant anti-social issues. Most of our core volunteers are also very much involved as local residents in trying to highlight and raise these issues with the council and services. With all this in mind we have agreed **we will look to offer more trips outside the area for inspiration and respite.**



We operate with an extremely dedicated team of volunteers and have



sustainability, a wealth of experience and the needs of our growers at our core. This put us in a fortunate position where had the luxury to be selective in what we were going to do to avoid being spread too thinly and we could pick funding bids that perfectly aligned with our plans and goals. Despite continuing setbacks due to antisocial actions by individuals or badly timed work by council teams that were out of our control, our confidence in what we do and how we do things continued to grow along with our resilience.

**Getting into the Orchard more** to spend time learning about caring for all the different fruit and nut trees has been a dream of ours and to be successful in the funding bid has paved the way for us to get stuck in next reporting period. We are really excited about working out how we can improve the space to give the trees and our growers the best environment we can to continue to grow and thrive.



**The research and findings on urban greening identified from the walks Same Skies organised last year have led to important conversations about greening for the future with the Harehills Neighbourhood Forum.**

We hope to pursue more academic research of this nature as if it is followed and implemented locally, it would lead to a greener Harehills, which in turn, should support a positive drive for front garden growing.



We now feel ready to start our own **demonstration gardens** to show more examples of growing food at home as part of a **living larder project** from Jan 2026 and **celebrate some of our favourite things we have learnt over the last 10 years**. The idea is to focus on three to four gardens and spaces to share on social media and in a newsletter to show the importance, value and beauty of front yarden food growing and celebrate what our gardens and local greenspaces can produce, with the hope that we can continue to **inspire more people to give food growing a go** too.



**We support communities growing together** and believe that it is important that we do not just have things done to us. The Summer of unrest showed how

important changing the narrative is and we were pleased to hear about the **CommUnity Policing and Council Initiative**. As with the Harehills Neighbourhood Forum it is important that **all future plans are developed through inclusive co-design and production**. Often the work of including communities is done in separation, which does nothing to bring people



together to address strategic issues that affect us all. To this end Back to Front will always endeavour to link to and co-operate with other local groups.

### **Preparing the ground to attract more people to grow together.**

We recognise that growing food is more than just a practical skill, it requires an element of resilience, imagination, and luck but it is such a great way to connect with nature and make beneficial use of the land and environment around us. In difficult and unsettling times, it can help to start a conversation or build a bridge to allow people to reconnect with each other - **rather than put up a fence, why not plant an edible hedge?**

We are still here in the heart of Harehills growing the Back to Front way in hope for the fruitful future we would love to see. We will continue to strive to try make it a reality for more people so they too can experience the excitement and anticipation nature offers each year when everything starts to bud, then be surrounded by blossom, followed by the pure joy felt when picking a juicy strawberry or a few ripe raspberries, before any slugs or snails beat you to it.





CHARITY COMMISSION  
FOR ENGLAND AND WALES

Back To Front CIO

1170920

## Receipts and payments accounts

CC16a

For the period  
from

Period start date  
01/04/2024

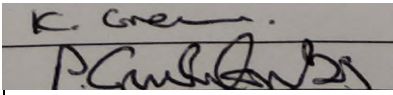
To

Period end date  
31/03/2025

### Section A Receipts and payments

	Unrestricted funds to the nearest £	Restricted funds to the nearest £	Endowment funds to the nearest £	Total funds to the nearest £	Last year to the nearest £
<b>A1 Receipts</b>					
	-	-	-	-	-
Climate Action Leeds	1,625	-	-	1,625	-
	-	-	-	-	-
	-	-	-	-	-
	-	-	-	-	-
	-	-	-	-	-
<b>Sub total</b> (Gross income for AR)	1,625	-	-	1,625	-
<b>A2 Asset and investment sales, (see table).</b>					
	-	-	-	-	-
	-	-	-	-	-
<b>Sub total</b>	-	-	-	-	-
<b>Total receipts</b>	1,625	-	-	1,625	-
<b>A3 Payments</b>					
Admin costs	106	-	-	106	157
Events - Forum		774	-	774	228
Gardening sundries	271	-	-	271	629
	-	-	-	-	-
	-	-	-	-	-
	-	-	-	-	-
	-	-	-	-	-
	-	-	-	-	-
<b>Sub total</b>	377	774	-	1,151	1,014
<b>A4 Asset and investment purchases. (see table)</b>					
	-	-	-	-	-
	-	-	-	-	-
<b>Sub total</b>	-	-	-	-	-
<b>Total payments</b>	377	774	-	1,151	1,014
<b>Net of receipts/(payments)</b>	1,248	- 774	-	474	- 1,014
<b>A5 Transfers between funds</b>	-	-	-	-	-
<b>A6 Cash funds last year end</b>	7,207	2,152	-	9,359	10,373
<b>Cash funds this year end</b>	8,455	1,378	-	9,833	9,359

## Section B Statement of assets and liabilities at the end of the period

Categories	Details	Unrestricted funds to nearest £	Restricted funds to nearest £	Endowment funds to nearest £
<b>B1 Cash funds</b>	Bank account	8,455	1,378	-
		-	-	-
		-	-	-
	<b>Total cash funds</b>	<b>8,455</b>	<b>1,378</b>	<b>-</b>
	(agree balances with receipts and payments account(s))	OK	OK	OK
<b>B2 Other monetary assets</b>		-	-	-
		-	-	-
		-	-	-
		-	-	-
		-	-	-
		-	-	-
		-	-	-
<b>B3 Investment assets</b>			Cost (optional)	Current value (optional)
			-	-
			-	-
			-	-
			-	-
<b>B4 Assets retained for the charity's own use</b>		Fund to which asset belongs	Cost (optional)	Current value (optional)
			-	-
			-	-
			-	-
			-	-
			-	-
			-	-
			-	-
<b>B5 Liabilities</b>		Fund to which liability relates	Amount due (optional)	When due (optional)
			-	
			-	
			-	
			-	
Signed by one or two trustees on behalf of all the trustees		Signature	Print Name	Date of approval
			Katie Greaves	28/01/2026
			Peter Cruikshanks	28/01/2026

