

Back to Front - Annual Report:

(Reporting Period from April 2021 – March 2022.)

Chair's Welcome:

On behalf of the Back to Front Trustees I would like to offer a warm welcome to our fifth annual report since becoming a registered charity *in December 2016 (Back to Front CIO - Registered Charity Number 1170920)*. This year was another challenging one as the global pandemic persisted and the UK was under Covid 19 restrictions until 19th July 2021 with testing continuing and numbers of cases varying throughout this reporting period. Over the previous year we had learnt how to quickly react to the ever-changing situation and having the restrictions in place at the start of the growing calendar provided us with another opportunity to build on and cultivate what we had accomplished during the lockdowns.



Due to the seasonal nature of growing edibles and maintaining community planters and gardens, we were delighted that we now had our committed local working party who could step up and step in should ill health or increasing restrictions mean our plans have to be cancelled. We were also confident that we would be able to promote and run a variety of socially distanced educational sessions and activities without compromising the experience for local growers. It was fantastic to be able to plan to meet in person and get together.

We continued working on our local partnerships, both new and old. We met with and attended sessions run by **Alan**

and **Gini from the Fruit Works Cooperative** who we had linked up with last year and as a result it became the Back to Front year of the fruit tree! We also got behind and supported the **Great Get Together** at the **Harehills Bowling Club** and helped set up the **initial Neighbourhood Planning Forum** where we used our skills and experience to help bring people together and facilitate the early sessions. We worked closely with the **Leeds City Council Parks and Countryside team** to create the huge horseshoe shaped wildflower meadow in Harehills Park that we had been dreaming of sowing for years and we encouraged growers of all ages to be inspired to get involved. To achieve all this social media was a useful tool to reach as many people as possible and it felt like it was our best year yet for interesting posts, sharing exciting opportunities and documenting our activities.

We would like to thank the inspirational partners we have worked with this year and as ever **Donna, Trisha and Esther**, our generous supporters. I would also like to thank the Back to Front trustees **Karen, Peter and Katy** for continuing to be such a cheerful, resilient and dependable group of people throughout such an unpredictable year, both globally and much closer to home. I had fallen ill with covid in early 2021 and I ended up suffering with Long Covid symptoms, later in the year I also had exciting news to share as I was expecting a baby. With these two life changing developments we invited Karen to help co-chair the Back to Front trustees and step in should I be unavailable for a meeting, we were all absolutely delighted that she said yes. Finally, we would like to thank **all our local growers** for continuing to grow with us the Back to Front way despite all the barriers we face.

Katie Greaves, Co-Chair of the Trustees of Back to Front CIO.

Introduction: **Bloom and Grow.**

Our main aim for this year was quite simply to get our growers together again. Covid had restricted everything last year, but we were heartened to see that more community events and group sessions were tentatively starting up again. Arrangements and booking procedures were still confined by the latest covid rules and guidelines about numbers for gatherings, mask wearing and social distancing and everything was subject to change so we decided to concentrate on what we knew could do, not what we could not.

We were keen to meet in person wherever possible so we started by planning things we could do in smaller groups or outside. We began researching what educational sessions we could look to promote, join, or host where we could link with our existing partners but still be flexible about changing things at the very last minute should the Covid situation suddenly change. We reached out to our growers and discussed the possible activities, plants and seeds they might be interested in which we could safely swap, and we noticed there was an interest in fruit and flowers this year. We divided our focus for this reporting period into four distinct strands, these were:

- **Nurturing links with new and existing partners,**
- **Continuing our Covid safe sessions, planning and plant shares,**
- **Seasonal social media presence,**
- **Looking into our local growing opportunities.**

With our objectives in place, we then shared out the workload. Katie looked at making connections and linking with partners, Katie and Katy identified a series of covid safe sessions that we could trial this year with a mind to recreating in the future to larger groups. Karen focused on our social media accounts and local growing options and our idea of creating an exciting **Gateway to Growing** opportunity for people living in the area. We were keen to build on the successes and ways of working we had adjusted to in the previous years and get growing.

1. Nurturing links with new and existing partners

We started the reporting period picking up where we had left off by getting our local working party together. Back to Front have collaborated with **Harehills in Bloom** on community planting days over the years and Fay from Harehills in bloom was keen to have a **replanting day** for the six planters in the play area known as Ashton Park. During lockdown, the play area had been closed so many of the plants died as nobody could get in to water them.

We suggested having an Easter Holiday community planting day. We were delighted when members of both groups told us they had been



Fay Johnson ► Harehills in Bloom Group
April 16, 2021 · 📍

Harehills in Bloom and Back to Front have planted in Ashton Road Play Area today. The sun shone for us and the finished result looks fabulous 🌱

nurturing plants in their gardens for us to use and many of them said they were available to attend the weekday session.

It was a lovely day and the cheerful collection of flowers such as wild geraniums and dianthus, and edibles such as elderberry plants and strawberry plants soon filled the bench ready for allocating to the various planters. Some of our volunteers had to dash off to work after donating their plants but lots stayed to help plant and in half an hour all the planters were refreshed, and the plants were well watered in. This allowed time for much needed in person conversations between the local growers and young people who use the play area. The remaining strawberry plants we had brought with us found good homes with a local family who have three very enthusiastic budding gardeners who use the play area every day and offered to help water the planters.



Earlier in the year we had been contacted by **Fruit Works** as they wanted to run a series of **top grafting sessions** around Leeds and they were enquiring about whether we knew of any ornamental flowering cherry trees in Harehills. We told them about the trees at the Compton Road mini woodland site and they told us they would be perfect for this so a few weeks later some of our Back to Front growers and a couple of new friends attended the fantastic Fruit Works top grafting session in Harehills.

The introduction covered the reasons for top grafting and was followed by a short demonstration showing two different grafting techniques to top graft, the first by cleft grafting and the second by bark grafting some fruiting scions onto a flowering cherry tree so that this grafted piece could eventually produce fruit. The possibilities for this are endless and the idea really excited our growers. The attendees took lots of informative pictures which were shared with those who couldn't go on the day. We all left feeling inspired and with the skills and knowledge to run our own top grafting get together.

Our next partnership project had been years in the planning. We had approached **Leeds City Council Parks and Countryside department** with our vision for a large, curved wildflower bed at the biggest park in Harehills. Karen had identified the perfect spot and we got early permission in principle but unfortunately this was another plan that was delayed by the pandemic, but we decided to revisit it this year as we felt it was an important opportunity for residents to get together to sow seeds of hope in the area.



Katie attended a site visit with **Vicky Nunns from Parks and Countryside** to check the area for suitability for rotavating with their machine and we were pleased that they decided that it could be done. The Team from the **Harehills Bowling Club** also offered their support and helped us with measuring out the bed for us to estimate the size so we could buy enough wildflower seed to cover the area. Shortly afterwards we were excited to see that '**The Horseshoe**', as it became known, in Harehills Park was being prepared by Parks and Countryside ready for us to seed the wildflower meadow.



It was a beautifully sunny evening for the largest number of **Back to Front and Harehills in Bloom** volunteers to come together after such a long time of being kept apart by Covid. The wildflower meadow sowing event had turned into an early evening activity as our growers told us they could only join us when they had finished work. The activity and timing were suitable for our younger growers too and many hands make light work so in no time all the seeds had been bagged up, placed evenly along the length, scattered, and raked in well. We were all so grateful to the Parks and

Countryside team for preparing the area for us as without that we would have been digging for weeks. It was so uplifting to be doing something positive for the area we all call home. It helped to remind residents that there are lots of lovely folk in Harehills and when we had finished the area inside the horseshoe shaped mound looked like it would become the perfect spot to sit and picnic protected from the ball games that take place on the playing fields on the other side of the trees by a glorious splash of pollinator friendly cover.

The next partnership event we got involved with came from our newly found link with the **Harehills Bowling Club** who are based in Harehills Park. They invited us to the **Great Get Together** event they were hosting at the beginning of July. The weather forecast was changeable but on the request of Courtney, one of our young growers, we ran a microgreen sowing stall and despite the torrential downpours we had a lovely afternoon at the Harehills Bowling Green. Lots of folk of all ages enjoyed a chance to bowl, eat gorgeous pakora and enjoy seeing each other face to face. The cardboard boxes may have got a little soggy, but our spirits weren't dampened as it was such a fantastic day. Our young volunteer Courtney was confident enough to help show everyone how to do their own take away microgreens and Smita stepped in to assist us to prep the kits and they proved popular with adults and young people alike.



This year a slightly different partnership opportunity became available. Joanne Harrison the Back to Back historian had told us about a potential Government pilot scheme which was being designed to support inner-city areas like Harehills to develop their own Neighbourhood Plan. Many local residents had seen the power of having a Neighbourhood Plan in place and how much it had benefitted nearby areas who had already written one, but they had always felt they did not know where to start here. This pilot sounded exactly what the residents we have worked with have needed.

Some other residents who had been involved with the Great Get Together also showed an interest and when it was announced that Harehills had been selected for the pilot we were happy to collaborate and lend our support with the meetings and community workshops. We were able to support by bringing people together, co-chairing meetings and facilitating the “Big Dream” ideas and aspirations sections of the early meetings by facilitating PATH and MAP sessions. The feedback from these sessions showed there was a widespread genuine interest from everybody to improve the green spaces we have locally and a desire to green up the urban environment across Harehills. This fitted perfectly with our own long-term vision. After all the delays from Covid we felt the timing could not be better to begin working to set up a **Harehills Neighbourhood Forum**. We offered our support by joining the Initial Forum members to contribute to the application for recognition as a forum to begin developing a Harehills Neighbourhood Plan.



Our last collaboration of the reporting year was in February 2022. Gini from **Fruit Works** showed a few core Back to Front growers the basics of **Winter Fruit Tree maintenance** for apple and pear trees. This session was held in Harehills Park Orchard and some of the trees were in a sorry state due to a combination of vandalism and years of neglect. Thanks to the knowledge that Gini shared with us we felt confident enough to add winter fruit tree pruning to the list of sessions we could run ourselves to help maintain these trees for the benefit of the local community. We have such little space in Harehills

in which to create new community orchards, so this existing space is invaluable to us.

2. Continuing our Covid safe sessions, planning and plant shares

This year we wanted to give our growers opportunities to reconnect with Back to Front and each other as well as learning some new growing techniques and being inspired to grow something new. Our first chance to achieve this was by offering a new **Back to Front skill sharing session** where we demonstrated top grafting and bark grafting.

We spent an afternoon with a group of Back to Front volunteers grafting cherry scions onto more of the ornamental cherry trees at the Compton Road Woodland. Our growers commented that “grafting is like magic”, and we still can't quite believe that you can lop off a branch of an existing tree and slot in a shoot from another tree, seal it with glue and old plastic bags and have them grow together. We were so grateful for our successful partnership with Gini and Alan from Fruit Works for showing us how. If the grafts take it will mean that the trees could produce edible cherries, if not we will try again in the future.



The branches we cut away were put to good use replacing the stake that had gone missing from the cherry sapling and starting a deadwood habitat. There's a real variety of trees on this small plot that was once the site of a demolished row of terraces and it shows how even a small stand of trees can positively transform an area. It was also lovely to see that some of the bulbs we planted had come through. As with all Back to Front activities we did a litter pick around the area we were working in and used our new purple bags from Litter Free Leeds.

After the session Karen loaded her car full of the apple saplings (Katy variety) that were grafted as part of the online workshop in March 2020 for Back to Front. Fruit Works had been for growing them on for us, and we could not wait to share them around Harehills so more people can love a tree. Several growers at the top grafting session expressed an interest in having a fruit tree of their own so Karen delivered the trees directly to their own gardens.

We received some lovely feedback after the session: “We're so glad we attended your tree grafting session today. It was very informative & the hands on experience is just what I needed to learn this skill & develop my confidence to graft my own fruit trees soon. Thank you all so much for gifting us our own grafted apple tree & the strawberry plants. I can't wait to enjoy the fruits 🍏🍏🍏” Yunii Wennif



Due to popular demand, for the next outdoor session we organised another **wild garlic foraging walk**. We decided to have it in May as this time we wanted to show the group the edible wild garlic flowers too. Ashley led the walk and encouraged us to explore all the established wild garlic patches around Beckett Street Cemetery in Harehills. The wild garlic flowers were glorious, and we even found a patch of wild strawberries too. Some of our growers had never been to this beautiful old cemetery before and were amazed to find it's a real wildlife haven as well as a time machine to the past. We were all respectful of those who are buried there, and several of our growers found themselves peacefully looking at the names recorded in stone and wondering about the individuals and their lives.



By July many of the Covid restrictions were lifted so we took the opportunity to connect with our growers again and run our **Annual Summer Plant Share**. We distributed our donation of tomato plants from Trisha and the baby strawberry plants from Esther to new and existing growers. We also started to collect all the fruit and berry trees that our lovely growers had been looking after for us during the pandemic.

A small group of our growers then paid a visit to the

Back to Front Community Yarden at Shine. It was great to see the beds were still thriving despite us having struggled to gain access to the Community Yarden since the first Lockdown due to the reduced opening hours.

We started by tidying the community shed and positioned our **mini nut, berry, and fruit tree nursery** in a sheltered spot so that the little whips could be cared for until they are ready for planting in their permanent home and we looked at how we could use the space better for future workshops and demonstration gardens.





Karen did a brief **plant check, tidy up and litter pick** around the **Ashton Road Planter** in July as part of the planning for our Autumn Maintenance session. The buddleia bush looked lovely, and there were only a couple of gaps for us to fill at the maintenance session with some new plants. Plus, parks had fitted a new fence around the play area that local people commented “now looks much less like a prison boundary”. We had noticed an increase in litter near here since one of the public bins further down the road had been removed and had been monitoring this.

Karen quickly filled a purple bag but had to leave the big bits of a TV unit that had been left to the side and she said it was sad to see evidence of fly tipping all along the other side of Ashton Road. This is an ongoing issue, but it was fantastic to see the planter is still going strong and preventing large scale fly tips on this busy corner.



Sadly, the problems with litter and fly tipping are widespread. With a population of 33,000 people in two square miles, a lack of recycling facilities due to the closure of the local waste centre and the removal of 80% of the green bins, Harehills struggles to manage its waste effectively. As well as litter picking whenever we run a greening activity, Back to Front volunteers also spend a lot of time emailing the council to highlight larger fly tips and when they can and will join other community groups such as the amazing young folk from the **Breaking Down Barriers Project** who regularly do their bit to try and address the areas rubbish issues. We also support the **Harehills Community**

Wombles and **Litter Free Leeds** who supply the purple bags and host litter picks in the area.

Before the pandemic we had wanted to organise some **Inspiration trips for Back to Front growers and supporters**. The Lockdowns and restrictions had put this idea on hold but this summer we started thinking about what local trips we could do. Around this time Katie was invited to explore an established allotment plot in Harehills. Ann Marie told Katie her friend grows in a forest garden style, and we were shown layers upon layers of fruit, berries, herbs, and vegetables. It looked like such a great way to get the most out of a space and would be suitable for the local community green spaces we have started and could even be done on a small scale in a garden. We were introduced to other allotment holders, met up with an old friend and were given lots of cuttings to try grow. It was a feast for the eyes and the tummy as we were encouraged to taste the ripe berries. It was so



inspiring and made me think that we should add **an Annual Allotment visit** for our core growers to the Back to Front Calendar.

Our next session was the **Ashton Road Maintenance Day** in November. Despite it being such a cold day there were plenty of willing hands to get stuck in. Local Back to Front growers split into two groups with the first giving the **Ashton Road Play Area Planters** a good tidy up. They pruned back shrubs and planted bulbs ready for spring and replaced all the gaps with new winter planting.

Again, there was an awful lot of litter picking to do, mainly due to the dumping of a business waste bin that had been taken from a local shop who must not have secured their bins properly. We contacted the litter teams who were out and about as it was too much for us to handle. Frustratingly they said it was not anything to do with them because the play area comes under the parks department. This was not ideal as it made access to the play area difficult. We will be looking to encourage more joined up working with the Council departments.



The second working group focussed on the **Ashton Road Planter**. As well as adding bulbs and new planting we gave it a smart new paint job to get it through the winter. It's always so uplifting to do these planter maintenance days because we always have lots of enthusiastic young folk rush up to us and offer to help. Some of the children joining us for this session had helped to plant up the original planters and knew exactly what they were doing. They also said they were keen to have their own watering cans so that they can water the plants when they come to play in the park. We said we would see if we could sort that out.



It is also notable that any negative comments we receive generally come from folk in the form of comments like "It won't last, the foreigners will spoil it, they don't care". Interestingly the people making these comments never offer to help us. The growers who had turned up all felt that this tired and frankly racist narrative needs to stop. Karen summed it up beautifully "The reality is that in general no matter where in the world folk hail from the efforts of local folk to improve the area is very much appreciated and generally those who actually stop to give a little time to help or offer encouragement, would be seen by

the naysayers as foreigners. These planters are a genuine community effort to improve the neighbourhood we share for the benefit of everyone. The bairns who helped today

represented a wide range of local communities. They helped in full knowledge that some plants might get nicked, they saw that some planters were set alight over the summer, they see the constant dumping, and yet like us they choose to work together to do something positive and to plant in hope. [#sowseedsofhopenothate](#) 🍀”

3. Seasonal social media presence



During the lockdowns when we were unable to meet, we had turned our attention to improving the **Back to Front page** and had received great feedback. Throughout this transitional phase we embraced the challenge of keeping up the social media presence alongside the emerging in person sessions. This reporting period turned out to be our best year yet for content with seasonal monthly updates and information sharing.

Each month Karen created posts that aimed to inspire folk at home to carry on growing. Following the seasons her regular posts shared ideas and

highlighted easy ideas to try at home. Recycling bottles to make pot irrigators, inspiration for growing edibles in small spaces, information about local groups, workshops, opportunities, and initiatives such as Women Friendly Leeds. We shared memories and recipes with a foraging and herbal focus and folk shared updates on their planting efforts. Links were shared to growing and compost advice and lots of different hedge ideas. There were regular Yarden updates from Karen’s small yard with a lockdown project to create planters out of unwanted furniture and activity kits made for children on her street. We also highlighted national days/weeks/months of significance for us such as **Earth Day, National Gardening week, Love a Tree Day, World Bee Day, Black History Month and the Great Garden Birdwatch.**



We also continued to share Karen’s beautiful local photographs. This had worked well during the lockdowns and provided inspiration for people who might not be able to get around the area if they were shielding or unwell, but we quickly realised these photos had provided us with a fantastic record of what we had done and could be used as inspiration for the future. This year Karen captured the wildflower horseshoe each month on a series of wonderful wildflower walks and would list what was flowering, the people she bumped into and comment on the next steps for managing the meadow.



August - Wildflowers Walk “Harehills Park Horseshoe Meadow planted by lovely local folk from Harehills, volunteering with Back to Front and Harehills in Bloom. Lots of interesting wildflowers: poppies, cornflowers, borage, yarrow, pink and white champions, calendula, and oxide daisies to name but a few. They went in late but hopefully more flowers are set to appear through September. After they've gone to seed we'll be looking to arrange a scythe, shake and rake session so that we can get an even better show next year. Thank you to all those who turned up to help us do our last-minute seeding 🌱”

September - Wildflowers Walk “These are the flowers currently still blooming in the Harehills Park Horseshoe Meadow. More flowers still to bloom and the bees are loving it. It shows what potential Harehills has to be a nicer place. On the way I stopped by St Cyprian’s after seeing a group of kids ripping up waste paper and strewing it all over the green. They ran off when the street cleaners who happened to be nearby came to tell them off, but thanks to the gentleman further down the street who sent his kids over to help us clear it up again. 🌱”



October - Wildflowers Walk “Had an early start for work today so was walking round Harehills Park this morning at sunrise. It was lovely. A local wombler was out litter picking and the wildflowers planted by Back to Front and Harehills in Bloom are still adding a floral splash of colour. More importantly they'll be providing a last feast for pollinators before winter draws in 🌱”

We were still putting a lot of the material we would normally cover in person at workshops and on community days on social media but combining this with the socially distant gatherings helped during the shift back to normal face to face activities. Being able to get together helped us identify what people were interested in and shape ideas for future in person opportunities. To help promote the project we also produced and shared a new flyer to highlight what Bank to Front is about and encourage more people living in Back to Backs, both on the sunny and shady sides of a street to try growing edible plants.



4. Looking into our local growing opportunities

Generally, outside of the tiny gardens of Harehills, Back to Front operates in a peripatetic way – focusing on neglected patches of land around the area that have the potential to be lovely with a little TLC. It is our way of trying to save precious green pockets that might otherwise be concreted over. We will work with keen individuals who want some initial support to adopt and improve a space near them, such as shared bin yards or neglected verges. It is however helpful if we have some kind of space to use as a hub, somewhere for a shed and tree and plant nursery and to run learning activities. The need for such a space became very apparent when lockdown meant that we were literally locked out of the space we had at Shine. We have always had the use of some side yards there, but only had access when the main building was open.



Reduced opening hours had meant that we were unable to get in and water plants, maintain the space and access tools stored there at all. With this in mind, we began to think about how we could secure access to the space for evenings, weekends and indeed pandemic lockdowns. We developed the idea for the **Gateway to Growing Hub at Shine** and drew up an outline proposal for funding to install external gates to the space that would allow us to access the garden space even when Shine was shut as well as securing funding to develop the space into the kind of community gardening outdoor classroom we have always dreamed of. Somewhere to grow friendships, share ideas, learn and eat together as well as growing plants. We drew up a proposal and first stage plans and had a very positive virtual meeting with the Shine Director, who agreed that they would be OK with this plan.

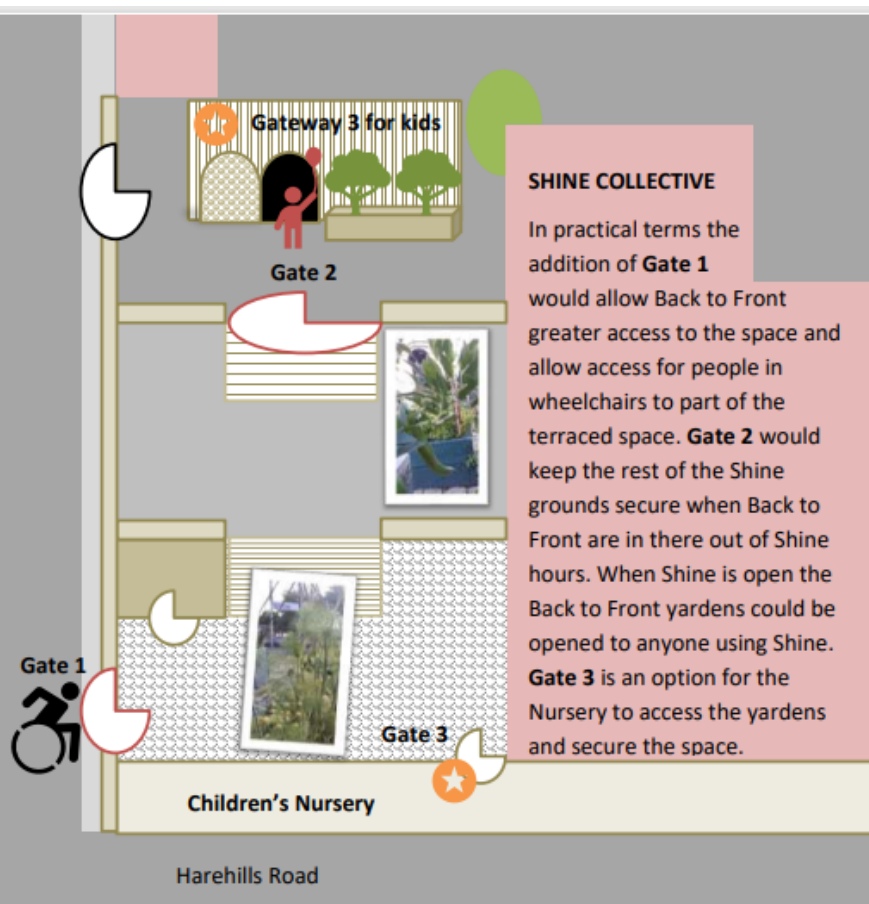


Making Back to Front at Shine sustainable

Back to Front currently has limited access to the space it uses for gardening and we are aware that this limits what we can do with the space. All the key volunteers work so mainly have free time at weekends or in the evenings when access to Shine grounds is limited.

To allow us to develop and use the space more we want to put in a substantial bid to secure funds to:

- reinstate the gate entrance directly onto the Back to Front of Conway Street – which would give Back to Front access when Shine is closed and access for disabled people to the lower terrace.
- Install a new gate at the top of the stairs to the upper terrace so that the Shine remains secure.



SHINE COLLECTIVE

In practical terms the addition of **Gate 1** would allow Back to Front greater access to the space and allow access for people in wheelchairs to part of the terraced space. **Gate 2** would keep the rest of the Shine grounds secure when Back to Front are in there out of Shine hours. When Shine is open the Back to Front gardens could be opened to anyone using Shine. **Gate 3** is an option for the Nursery to access the gardens and secure the space.

A Gateway Garden

By giving Back to Front greater access it will enable volunteers to spend more time within the space creating modular sample gardens that will inspire local people. We want the space to become a **Gateway to Gardening** even for people who only have yards, doorsteps or windowsills in which to grow.

As such we propose that the gates are not just utilitarian, but in themselves celebrate the idea of growing. We believe that the people who live in Harehills deserve community spaces of quality, that show people that they are deserving of something special and do not add to the narrative that Harehills is a place where everything needs to be behind bars of austerity and intimidation. Our bid would include funds for bespoke gates.

We want to create a space of ideas that are relevant doable and inspiring for people in Harehills.



Supporting aspirations

Harehills is defined by tightly packed and largely neglected terraced housing with yards rather than gardens, high rates of poverty and transient communities. Alongside this crime levels are high and the area is blighted by a reputation that does little to change this narrative.

This reputation overshadows the many lovely folk who call Harehills home, the thriving local high streets and the potential that Harehills has to break free of some of this environmental deprivation with a little faith and imagination.

Where people have the will and ability, small pockets of loveliness can be found all across Harehills. The Gateway Garden would provide a space to learn and get ideas and inspiration – with demonstration gardens that people could apply to their own yards, door steps and windowsills.



Dream

Space to Share

Back to Front works all around the Harehills Area doing Practical Planting Projects where local people are keen to start something good on their street. We have supported the planting of bin yards and neglected green spaces that have enthused those living nearby to take a greater interest in taking care of them.

With the help of local volunteers we have begun planting unused patches of land with fruit trees so that children growing in this area have a chance to see where fruit comes from.

With a better purposed space we could create a tranquil learning space where we can add to the work we do by having an outdoor learning sessions, and community gatherings. A retreat amongst the brick and concrete to nurture relationships as well as plants.



SEED AND PLANT EXCHANGES

Part of the upgrade we plan would include adding fit for purpose, structural planters to enable us to be more productive in what we grow. This would allow us to grow on seedlings and saplings that we could give to people to encourage them to start growing, along with seedlings that are already kindly donated by Back to Front supporters who have garden capacity.



TASTING TOGETHER

Developing a more serviceable space would allow Back to Front to run sessions where folk can try home grown fruits and vegetables and learn how to prepare them for eating, and just enjoy being together sharing a verdant space.

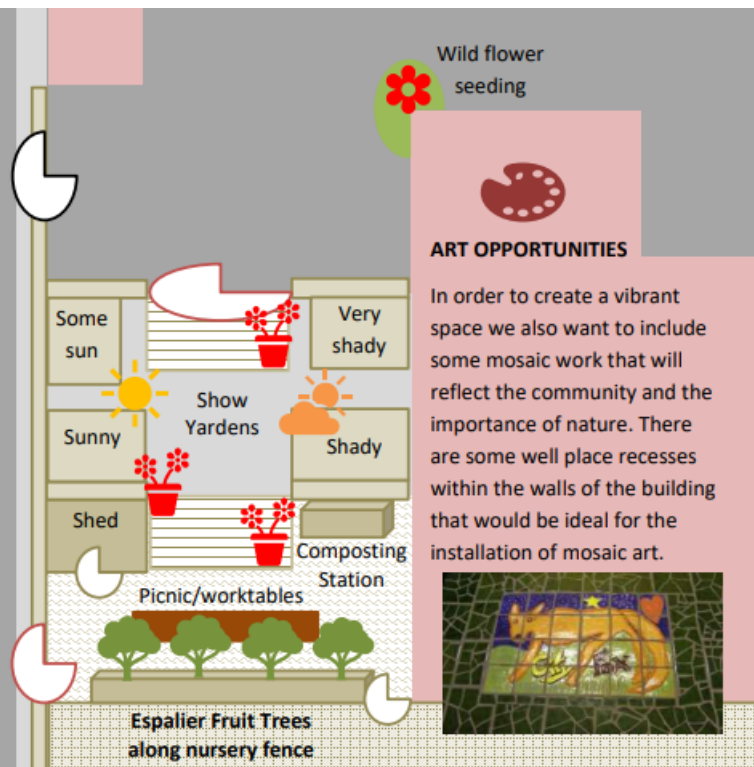


Planning for the Future

Back to Front has already run a planning session with local growers to think about how we could make the space more accessible and relevant. The whole site is on the shady side of the Shine building which means much of the space is challenging for growing. However, the upper terrace offers a sunny side aspect on the Conway Street side.

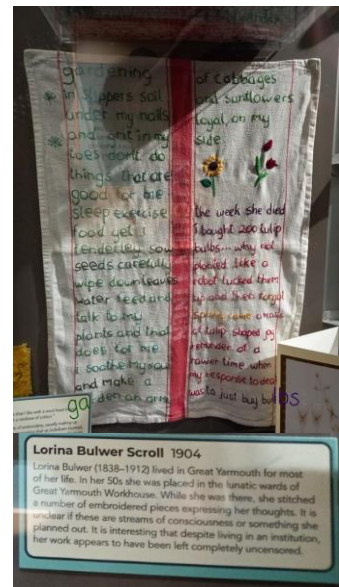
With this in mind we want to create planted areas that reflect the realities of people living on either the sunny side or shady side of terraces.

We also want to create a welcoming communal seating area on the lower terrace where learning sessions can be run, as well as improving the shed to allow shelter and a place to make refreshments.



Conclusion and Reflection

Soothing the Soul - We met with Donna from Space2 to visit the Thackray Medical Museum at the beginning of the reporting period to catch up on all things Harehills. We were attracted to the display which housed this brightly stitched little tea towel, and we were surprised to read had been embroidered in 1904 by Lorina Bulwer, a women locked away in an institution. She conveyed something profound about the soothing powers of gardening that struck a chord with us as we were coming out of the worst of the restrictions. *"I soothe my soul and make a garden, an army of cabbages and sunflowers, loyal on my side".*



From a Back to Front perspective the pandemic and lockdowns absolutely highlighted the inequalities that people living in densely packed, environmentally deprived urban areas face. Harehills has one of the youngest populations in Leeds, but very few properties have gardens where children can play. Yet again Harehills found itself highlighted in the news in a negative light with images of young children playing in litter-strewn parks and back alleys splashed across the media. Meanwhile in the suburbs children were enjoying following rainbow trails through well maintained parks no more socially distanced than the children in Harehills.


It is seeing and experiencing these inequalities that spurs us on as a group entirely run by volunteers to continue Back to Front as a means to offer people opportunities to learn how to improve their immediate environment, be supported and make new friends and to be inspired by possibilities they may not have thought could happen in Harehills. The lifting of an area from grim and unwelcoming begins with a plant growing on a windowsill or a doorstep, seeds, cuttings, and home grown produce shared with neighbours and a neglected area improved by local people coming together who want to be part of the change.

We will do the dirty jobs, filling our purple litter bags, we will do the boring jobs writing to the council demanding better services and facilities for the area, but it is important that we all have the chance to create and do something fruitful. This year became our unofficial year of fruit and flowers as we continued to nurture numerous local fruit trees, plant edible bushes and sow wildflowers, so while we wait for the system to improve neglected areas, we can help people to make a garden. We will continue to demonstrate how you can transform an area in a season with a wildflower meadow and make people feel they are not alone through a shared activity and if we are all lucky, we will watch our hard work bloom and grow so more Harehills locals can have their souls soothed by cheerful planting and growing together with hope.

Back to Front Partners up to 31st March 2022: Alan Apple from Fruit Works, Shine, Space2, Leeds City Council, Trisha and Esther for plant donations, the local Harehills Groups - Harehills in Bloom, Harehills Community Wombles, Harehills Community Watch, and the Initial Harehills Neighbourhood Planning Forum.

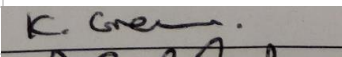
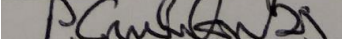
Funding up to 31st March 2022: Money left from Esmée Fairbairn, support from Alan Apple, Leeds City Council, local ward Councillors, Shine and Harehills in Bloom.

Treasurers report & accounts

 CHARITY COMMISSION FOR ENGLAND AND WALES	Back To Front CIO		1170920		CC16a
	Receipts and payments accounts				
	For the period from	Period start date 01/04/2021	To	Period end date 31/03/2022	

Section A Receipts and payments					
	Unrestricted funds	Restricted funds	Endowment funds	Total funds	Last year
	to the nearest £	to the nearest £	to the nearest £	to the nearest £	to the nearest £
A1 Receipts					
Learning Partnership Sparks Funding		-	-	-	100
	-	-	-	-	-
	-	-	-	-	-
	-	-	-	-	-
	-	-	-	-	-
	-	-	-	-	-
	-	-	-	-	-
Sub total (Gross income for AR)	-	-	-	-	100
A2 Asset and investment sales, (see table).					
	-	-	-	-	
	-	-	-	-	-
Sub total	-	-	-	-	-
Total receipts	-	-	-	-	100
A3 Payments					
Admin costs	8	-	-	8	120
Events		-	-	-	140
Gardening sundries		-	-	-	
	-	-	-	-	-
	-	-	-	-	-
	-	-	-	-	-
	-	-	-	-	-
	-	-	-	-	-
Sub total	8	-	-	8	260
A4 Asset and investment purchases, (see table)					
	-	-	-	-	
	-	-	-	-	-
Sub total	-	-	-	-	-
Total payments	8	-	-	8	260
Net of receipts/(payments)	- 8	-	-	- 8	160
A5 Transfers between funds	-	-	-	-	-
A6 Cash funds last year end	8,659	-	-	8,659	8,819
Cash funds this year end	8,651	-	-	8,651	8,659

Section B Statement of assets and liabilities at the end of the period

Categories	Details	Unrestricted funds to nearest £	Restricted funds to nearest £	Endowment funds to nearest £
B1 Cash funds	Bank account	8,651	-	-
		-	-	-
		-	-	-
	Total cash funds	8,651	-	-
	(agree balances with receipts and payments account(s))	OK	OK	OK
		Unrestricted funds to nearest £	Restricted funds to nearest £	Endowment funds to nearest £
	Details			
B2 Other monetary assets		-	-	-
		-	-	-
		-	-	-
		-	-	-
		-	-	-
		-	-	-
		Fund to which asset belongs	Cost (optional)	Current value (optional)
B3 Investment assets			-	-
			-	-
			-	-
			-	-
			-	-
		Fund to which asset belongs	Cost (optional)	Current value (optional)
B4 Assets retained for the charity's own use			-	-
			-	-
			-	-
			-	-
			-	-
			-	-
			-	-
			-	-
		Fund to which liability relates	Amount due (optional)	When due (optional)
B5 Liabilities			-	
			-	
			-	
			-	
			-	
Signed by one or two trustees on behalf of all the trustees	Signature	Print Name		Date of approval
		Katie Greaves		30/01/2023
		Peter Cruikshanks		30/01/2023

FRUIT WORKS

