



Trustees' Annual Report for the period

From

Period start date

1st January 2022

To

Period end date

31st March 2023

Section A

Reference and administration details

Charity name Gender Training and Development Alliance (GTDA)

Other names charity is known by None

Registered charity number (if any) 1170561

Charity's principal address 11 Mulberry Abinger Groove Deptford, London

Postcode SE8 5NE

Names of the charity trustees who manage the charity

	Trustee name	Office (if any)	Dates acted if not for whole year	Name of person (or body) entitled to appoint trustee (if any)
1	Racheal Okegbola	Technical Director	Whole year	Racheal Okegbola
2	Albert Adegboyega	Trustee	3x a year April 8 th August 11 th December 15 th	Racheal Okegbola
3	Williams Ojomu	Trustee	4x year January 20 th April 8 th - August/December 15 th	Racheal Okegbola
4	Stephen Akinola	Fundraiser- Volunteer	Whole year	Racheal Okegbola,
5	Paul Kilama	Adviser – Volunteer	Whole year	Racheal Okegbola
6	Joshua Bwire	Fundraiser – Volunteer	Whole year	
7	Favor Adeyoju	Adviser Volunteer	Whole year	
8	Christiana Tolu	Fundraiser	Whole year	
9				
10				
11				
12				
13				
14				
15				
16				
17				
18				

19			
20			

Names of the trustees for the charity, if any, (for example, any custodian trustees)

Name	Dates acted if not for whole year

Names and addresses of advisers (Optional information)

Type of adviser	Name	Address
Independent	Akeem Adeyemi-Volunteer	hayfor@yahoo.com
Independent	Paul Kilama-Volunteer	paulkilama@yahoo.co.uk
independent	Joshua Bwire-Volunteer	jib@papainternet.co.uk

Name of chief executive or names of senior staff members (Optional information)

Racheal Okegbola -Technical Director

Section B Structure, governance and management

Description of the charity's trusts

Type of governing document (eg. trust deed, constitution)	C.I.O Constitution
How the charity is constituted (eg. trust, association, company)	Trustees
Trustee selection methods (eg. appointed by, elected by)	Appointed by Advisers

Additional governance issues (Optional information)

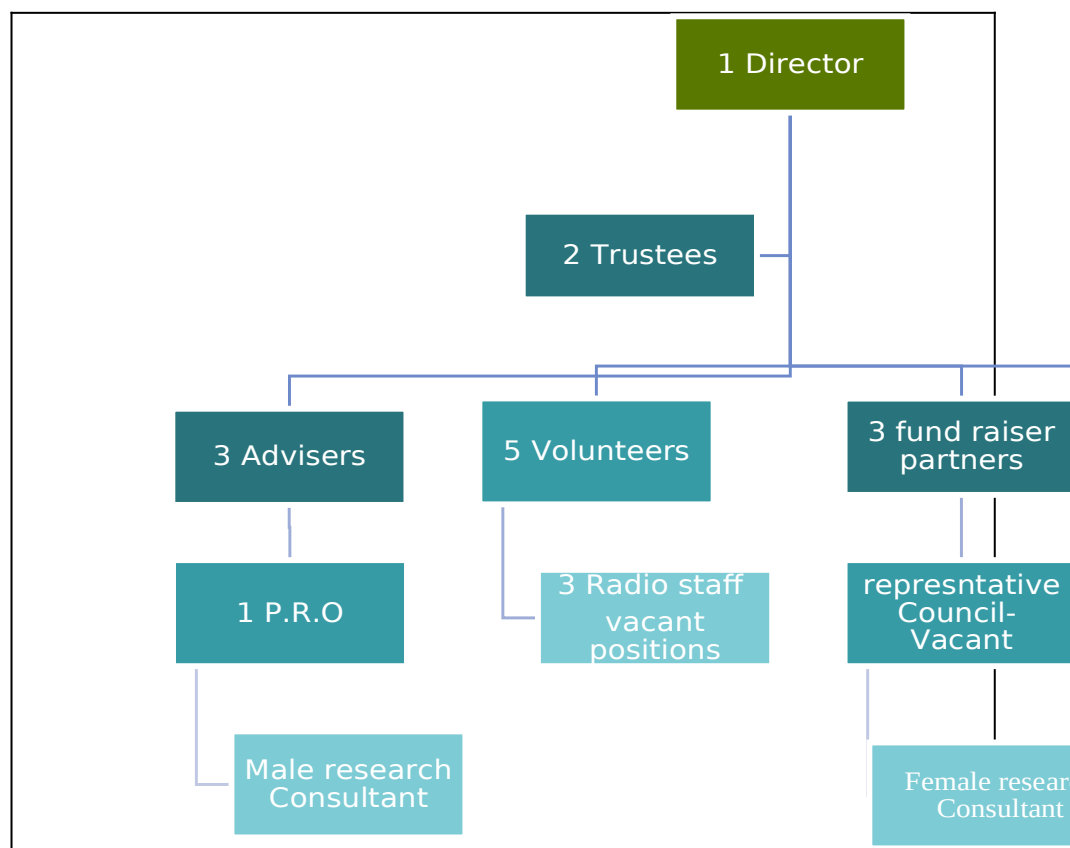
You **may choose** to include additional information, where relevant, about:

- policies and procedures adopted for the induction and training of trustees.
- the charity's organisational structure and any wider network with which the charity works;
- relationship with any related parties;
- trustees' consideration of major risks and the system and procedures to manage

All policies were not independent but taken from the CIO constitution particularly in relation to appointment of the trustees and advisers.

The trustees meet quarterly but can be called upon if need arises in practice and at any time in relation to grants making and major risk assessments. We have no relationship with any party. Find below, the structure which is subject to amendments.

them.



Section C Objectives and activities

Summary of the objects of the charity set out in its governing document

OBJECTS

- Advancing Education and Raising awareness on Gender Inequalities and all forms of violence against Teenagers and Women.
- Advancing Community Research and Education on Depression, Domestic Violence and high cost of living, looking at the damaging impacts on Depression and poverty among women.
- Research on HIV/AIDS disclosure rate.
- Conducting Radio programs on Behavioural Change Communication opinionated issues. Such as on poverty among women: Impacts on gender equality and British cultural values versus other States' Culture (in diaspora) in the UK.

Summary of the main activities undertaken for the public benefit in relation to these objects (include within this section the statutory declaration that trustees have had regard to the guidance issued by the Charity Commission on public benefit)

Activities in the UK

Activities include training community research on gender inequalities, campaign on violence against teenagers and women, health education focusing on depression and HIV/AIDS disclosure. Others are: Fund Raising with volunteers partnering with 'give as you live' organisation in London.

- Proposal writing to funders for charity, councils, government, banks and to external funders.
- Provision of Food bank and household items for the vulnerable homeless and elderly women.

2.

- **Radio programme** on all forms of violence against teenagers aired across England, Scotland and Wales educating the public on all forms of violence and preventive mechanisms through our trustees and 2 experts-consultants who are volunteers:

Discussion are in the following areas:

- Strategies against knife crime among teenagers through parents' forum
- Domestic violence prevention
- Reporting Abuse at Work places: implications.
- Rape
- British values and African / Asian values: Implications for people from diaspora.
- Questions and Answers Time for Teenagers on Life Skills & Future Goals.

Activities in Nigeria

- **Free GTDA team counselling on strategic business Plan**
- **Development for Small -Medium Enterprises Basically for WIDOWS and ORPHANS.**
- **Provision of small funds to poor widows and poor orphans to meet basic needs on request to GTDA.**
- **Educational Lottery Draws for Scholarship and small loans for 20 students with no interest.**
- **Fund Raising for these activities.**

Additional details of objectives and activities (Optional information)

You **may choose** to include further statements, where relevant, about:

- policy on grant-making;
- policy programme related investment;
- contribution made by volunteers.

Our policy on grant making is centred on sending out proposals to as many organisations as possible including to funding organisations in and outside the UK: such as Banks, Councils-Boroughs and Individual giver.

The trustees focus on these areas.

Currently working with Not for Profit Funders and other private funders on research grants with 25 proposals out through NPF.

We intend as part of long-term endeavour to generate sustainability funds through fund raising and Share-holding with business companies in UK and outside UK

or

Engage in Properties Development Business for rent.

Also

Volunteers contribute both time and money: providing support to community on domestic violence prevention and giving fliers on referrals, and campaign against on knife crime in the Borough of Greenwich, Lewisham and Southwark London

Section D

Achievements and performance

Summary of the main achievements of the charity during the year

ACHIEVEMENTS AND PERFORMANCE

- a) Advancing Community Research for Education and Raising Awareness on Gender inequalities, HIV/AIDS disclosure through Depression Campaign.

Key achievements were as follows:

- 2000 people reached and educated on all forms of violence in the UK
- Funding of food banks and household items to vulnerable women in the UK
- Radio program on Life Skills Goals and Behavioural Change Communication on British values for people from diaspora

- b) Secondly, the organisation **website [www. Gender-tda .org](http://www.Gender-tda.org)** additionally provides daily education to the public

c) Cultivating a sentiment in favour of equality and diversity

Presently, over 2,060 people have participated in our online conversations on website [www. Gender-tda.org](http://www.Gender-tda.org). This achievement is important for the organisation to know we are on track with meaningful inputs from the public on equality and on gender violence issues.

c) Conducting or commissioning research on equality and diversity issues and publishing the results to the public.

The book on amazon shelve authored by Racheal Okegbola is on
1.The Missing Matriarch: Underrepresentation of Women in the UK Public Sector

2. Elections and Gender Representation: The Political Culture and Practices

We have on- going community research on the following

- HIV/AIDS Disclosure: Stigma and Gender Vulnerability
- Codes for Gender Mainstreaming and The Best practices
- The Knife Crime in the UK & Parent Forum vis Faith-Based as the panacea.
- Parenting Role-Tell it all (Gaps & Challenges)

The objective is to use the books as training toolkits as well for public awareness and for specialised trainings.

Section E

Financial review

Brief statement of the charity's policy on reserves

GTDA has no financial reserve yet in place, therefore our policy remains a flexible one. But working on funds provision from funding organisations. To this end, 25 proposals have been sent out. The trustees will continue to fund necessary activities till we secure external funding.

Details of any funds materially in deficit

None

Further financial review details (Optional information)

You **may choose** to include additional information, where relevant about:

- the charity's principal sources of funds (including any fundraising);
- how expenditure has supported the key objectives of the charity;
- investment policy and objectives including any ethical investment policy adopted.

We are currently working with NPF agency for fund raising and 25 proposals have been sent out to different funders recently.

Also, we will continue to partner with Give as you live office for technical assistance on fund raising

Meanwhile, main sources of funding come for trustees' incomes from technical director/trustee's income.

Efforts are geared towards daily fund raising through trustees and volunteers, an activity that is on -going on regular basis.

Also, on our template plan, investment policy is in progress brainstorming and not conclusive. Looking into buying shares, and investing in properties and having books on amazons as well. We have one recently there.

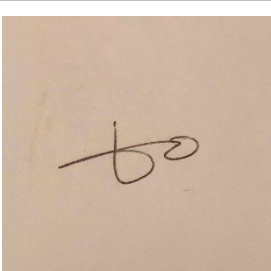
Section F Other optional information

Section G Declaration

The trustees declare that they have approved the trustees' report above.

Signed on behalf of the charity's trustees

Signature(s)

	
---	--

Full name(s)	Racheal Okegbola	
---------------------	------------------	--

Position (eg Secretary, Chair, etc)	Director	
--	----------	--

Date	Dec 31 2023
-------------	-------------



CHARITY COMMISSION
FOR ENGLAND AND WALES

GENDER TRAINING & DEVELOPMENT ALLIANCE

1170561

Receipts and payments accounts

CC16a

For the period
from

1/1/2022

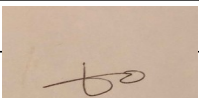
To

01/27/2023

Section A Receipts and payments

	Unrestricted funds	Restricted funds	Endowment funds	Total funds	Last year
	to the nearest £	to the nearest £	to the nearest £	to the nearest £	to the nearest £
A1 Receipts					
	1,500	-	-	1,500	-
	700	-	-	700	-
	-	-	-	-	-
	-	-	-	-	-
	-	-	-	-	-
	-	-	-	-	-
	-	-	-	-	-
	-	-	-	-	-
Sub total (Gross income for AR)	2,200	-	-	2,200	-
A2 Asset and investment sales, (see table).					
	-	-	-	-	-
	-	-	-	-	-
Sub total	-	-	-	-	-
Total receipts	2,200	-	-	2,200	-
A3 Payments					
	139.99	-	-	140	-
	340	-	-	340	-
	500	-	-	500	-
	-	-	-	-	-
	-	-	-	-	-
	-	-	-	-	-
	-	-	-	-	-
	-	-	-	-	-
Sub total	980	-	-	980	-
A4 Asset and investment purchases, (see table)					
	-	-	-	-	-
	-	-	-	-	-
Sub total	-	-	-	-	-
Total payments	980	-	-	980	-
Net of receipts/(payments)	1,220	-	-	1,220	-
A5 Transfers between funds	-	-	-	-	-
A6 Cash funds last year end	-	-	-	-	-
Cash funds this year end	1,220	-	-	1,220	-

Section B Statement of assets and liabilities at the end of the period

Categories	Details	Unrestricted funds to nearest £	Restricted funds to nearest £	Endowment funds to nearest £
B1 Cash funds	Donations into account	101	-	-
	donations into paypal account	500	-	-
		-	-	-
	Total cash funds	601	-	-
	(agree balances with receipts and payments account(s))	Agreement Error	OK	OK
		Unrestricted funds to nearest £	Restricted funds to nearest £	Endowment funds to nearest £
B2 Other monetary assets	Details	-	-	-
		-	-	-
		-	-	-
		-	-	-
		-	-	-
		-	-	-
B3 Investment assets	Details	Fund to which asset belongs	Cost (optional)	Current value (optional)
			-	-
			-	-
			-	-
			-	-
B4 Assets retained for the charity's own use	Details	Fund to which asset belongs	Cost (optional)	Current value (optional)
			-	-
			-	-
			-	-
			-	-
			-	-
			-	-
			-	-
			-	-
B5 Liabilities	Details	Fund to which liability relates	Amount due (optional)	When due (optional)
			-	
			-	
			-	
			-	
Signed by one or two trustees on behalf of all the trustees	Signature	Print Name	Date of approval	
		RACHEAL OKEGBOLA	12/31/2023	