



## Trustees' Annual Report for the period

Period start date

**From**

Period end date

**To**

1<sup>st</sup>  
March  
2021

31<sup>st</sup>  
January  
2022

Section A

Reference and administration details

**Charity name**

Gender Training and Development Alliance (GTDA)

**Other names charity is known by**

None

**Registered charity number (if any)**

1170561

**Charity's principal address**

11 Mulberry Abinger Groove Deptford, London

**Postcode SE8 5NE**

**Names of the charity trustees who manage the charity**

**Trustee name**  
**Office (if any)**  
**Dates acted if not for whole year**  
**Name of person (or body) entitled to appoint trustee (if any)**

1

Racheal Okegbola  
Technical Director  
Whole year  
Racheal Okegbola

2

Albert Adegboyega  
Trustee  
4x a year January,  
20<sup>th</sup> Feb & 18<sup>th</sup>  
Sept 11<sup>th</sup> & 12<sup>th</sup>  
November 15<sup>th</sup>  
Racheal Okegbola

3

Ana, W  
NEW TRUSTEE  
Whole year

**Volunteers**  
**Advisers - Volunteer**  
**Whole year**  
**Racheal Okegbola**

1

Joshua Bwire  
Fundraiser – Volunteer  
Whole year

2

Christiana Tolu  
Fundraiser & Public Relation support Volunteer  
Whole year

3

Akinola Stephen  
Fundraiser/ Radio-program coordinator  
Whole year

4

Williams Ojomu.  
Radio program coordinator  
Whole year

**Names of the trustees for the charity, if any, (for example, any custodian trustees)**

**Name**  
**Dates acted if not for whole year**

**Names and addresses of advisers (Optional information)**

**TYPE OF ADVISER**

**Name**  
**Address**

**Independent**

Akeem Adeyemi  
[hayfor@yahoo.com](mailto:hayfor@yahoo.com)

**Independent**

Paul Kilama

**independent**

Joshua Bwire

[jb@papainternet.co.uk](mailto:jb@papainternet.co.uk)

**Name of chief executive or names of senior staff members (Optional information)**

**Racheal Okegbola -Technical Director**

## **Section B                      Structure, governance and management**

**Description of the charity's trusts**

Type of governing document  
(eg. trust deed, constitution)

C.I.O Constitution

How the charity is constituted  
(eg. trust, association, company)

Trustees

Trustee selection methods  
(eg. appointed by, elected by)

Appointed by Advisers

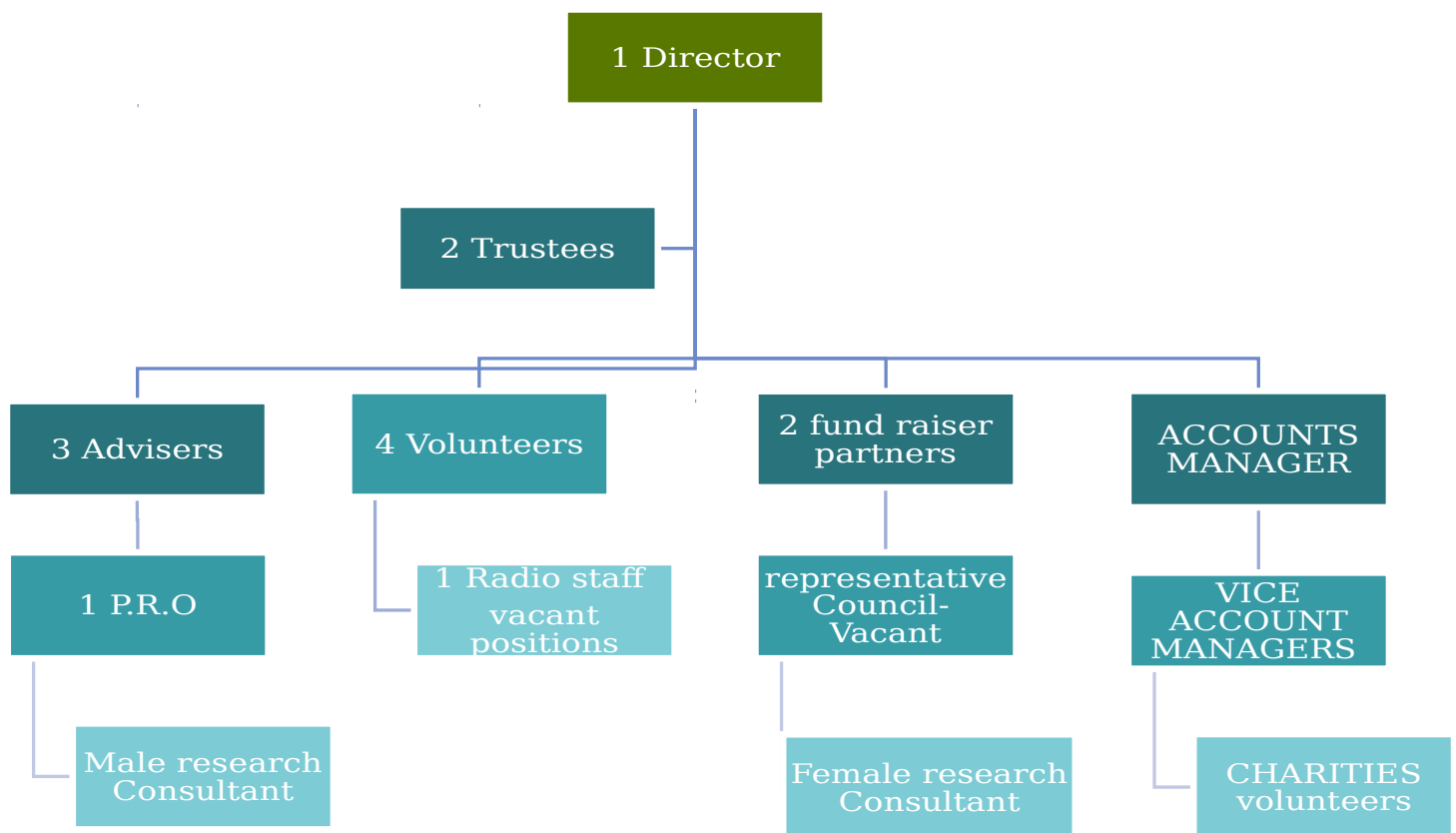
**Additional governance issues (Optional information)**

You **may choose** to include additional information, where relevant, about:

- policies and procedures adopted for the induction and training of trustees.
- the charity's organisational structure and any wider network with which the charity works;
- relationship with any related parties;
- trustees' consideration of major risks and the system and procedures to manage them.

All policies were not independent but taken from the CIO constitution particularly in relation to appointment of the trustees and advisers.

The trustees meet quarterly but can be called upon if need arises in practice and at any time in relation to grants making and major risk assessments. We have no relationship with any party. Find below, the structure which is subject to amendments.



## Section C Objectives and activities

Summary of the objects of the charity set out in its governing document

### OBJECTS

- Advancing education and raising awareness on equality and all forms environmental, and social violence against teenagers and young women.
- Advancing education on Obesity and Coronavirus looking at the damaging impacts.
- Radio programmes on HIV/AIDS disclosure rate and Behavioural change communication on domestic violence.
- Conducting research on equality and diversity issues and publishing the books to the public through amazon
- Facilitates Food bank for Widows and their Children in Nigeria.

Summary of the main activities undertaken for the public benefit in relation to these objects (include within this section the statutory declaration that trustees have had regard to the guidance issued by the Charity Commission on public benefit)

### Activities in the UK for the benefits of the Public.

Activities include:

- Community research on inequalities against women,
- Campaign on violence against teenage girls
- Knife crimes against the teenage boys and sexual abuse



- Health education on Obesity, HIV/AIDS disclosure.
- Fund Raising
  - Proposal writing to funders, councils, Banks and external funders for grants
  - Food bank and household items for homeless young women in need.

**2.**

**On -going Radio** programme on all forms of violence against teenagers aired across England, Scotland and Wales educating the parents on preventive mechanisms through paid consultants for facilitations and manual produced. Topics for Radio education forum were in the following areas:

- Prevention mechanisms against knife crime among teenagers using parents' forum on radio
- Domestic violence prevention measures campaign and one to one advise
- Sexual Harassment red flags decoded to the public
- Rape intensions flagged up to young girls' next-door neighbour
- Teenage Marriages
- British values vs African: learning behaviours
- Questions and Answers Time

Activities in Nigeria

- Free Telephone advise on counselling on strategic business development for Small Business Enterprises for widows and orphans
- Soft funding and food bank provisions quarterly to poor widows and orphans to meet basic needs on request to GTDA Nigeria.
- Training on empowerment.

### **Additional details of objectives and activities (Optional information)**

You **may choose** to include further statements, where relevant, about:

- policy on grant making.
- policy programme related investment.
- contribution made by volunteers.

Our policy on grant making is centred on sending out proposals to as many organisations as possible including the following:

Funding Organisations in and outside the UK

The trustees focus on these areas.

## Section D

## Achievements and performance

**Summary of the main achievements of the charity during the year**

### **ACHIEVEMENTS AND PERFORMANCE**

#### **a) Advancing education and raising awareness on equality and diversity.**

Key achievements were as follows:

- Funding of public education on all form of violence in the UK & funding of food banks and household items to vulnerable women and orphans in Nigeria
- Secondly, the organisation **website [www. Gender-tda .org](http://www.Gender-tda.org)** additionally provides daily education to the public, on safety codes to young women against sexual harassment
- Soft funds to widows and orphans in Nigeria.

#### **b) Cultivating a sentiment in favour of equality and diversity**

Presently, over 2000 people have participated in our online gender equality gaps conversations on website [www. Gender-tda.org](http://www.Gender-tda.org). This achievement is important for the organisation to know we are on track with meaningful inputs from the public on equality issues

#### **c) Conducting or commissioning research on equality and diversity issues and publishing the results to the public.**

Just recently, we have one book on amazon shelve authored by Racheal Okegbola the technical director.

And have on- going community outreach on the following

- Disclosure gaps: Stigma and Gender Vulnerability to HIV/AIDS
- Equality and best practices
- Knife Crime violence in the UK & prevention panacea
- Parenting Role (The Gaps & Challenges)

The objective is to use the books as training toolkits as well for public awareness and for specialised trainings.

## Section E

## Financial review

**Brief statement of the charity's policy on reserves**

GTDA has no financial reserve yet. Our policy remains, a flexible one. We will be depending on fund provision like Loans, grants and raising funds across and outside the UK.

**Details of any funds materially in deficit**

None

**Further financial review details (Optional information)**

You **may choose** to include additional information, where relevant about:

- the charity's principal sources of funds (including any fundraising);
- how expenditure has supported the key objectives of the charity.
- investment policy and objectives including any ethical investment policy adopted.

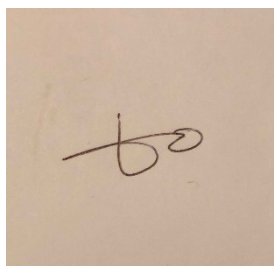
## Section G

## Declaration

**The trustees declare that they have approved the trustees' report above.**

**Signed on behalf of the charity's trustees**

**Signature(s)**

A photograph of a piece of paper with a handwritten signature in dark ink. The signature is stylized, appearing to be 'to' or similar.

**Full name(s)**

Racheal Okegbola

**Position (eg Secretary, Chair, etc)**

Technical Director

**Date**

January 27<sup>th</sup> 2023



CHARITY COMMISSION  
FOR ENGLAND AND WALES

GENDER TRAINING & DEVELOPMENT ALLIANCE

1170561

## Receipts and payments accounts

For the period  
from

1/1/2021

To

01/27/2022

### Section A Receipts and payments

	Unrestricted funds to the nearest £	Restricted funds to the nearest £	Endowment funds to the nearest £	Total funds to the nearest £
<b>A1 Receipts</b>				
Individual 's donation	300	-	-	300
Trustee donation	700	-	-	700
volunteer's donation	80	-	-	80
	-	-	-	-
	-	-	-	-
	-	-	-	-
	-	-	-	-
	-	-	-	-
<b>Sub total</b> (Gross income for AR)	1,080	-	-	1,080
<b>A2 Asset and investment sales, (see table).</b>				
	-	-	-	-
	-	-	-	-
<b>Sub total</b>	-	-	-	-
<b>Total receipts</b>	1,080	-	-	1,080
<b>A3 Payments</b>				
Website Subscription	150.00	-	-	150
Domestic Violence Victims support	350	-	-	350
Nigeria Widows & Orphans food bank	920	-	-	920
Radio production consultancy fee	580	-	-	580
	-	-	-	-
	-	-	-	-
	-	-	-	-
	-	-	-	-
	-	-	-	-
<b>Sub total</b>	2,000	-	-	2,000
<b>A4 Asset and investment purchases, (see table)</b>				
	-	-	-	-
	-	-	-	-
<b>Sub total</b>	-	-	-	-
<b>Total payments</b>	2,000	-	-	2,000
<b>Net of receipts/(payments)</b>	2,105	-	-	2,105
<b>A5 Transfers between funds</b>	-	-	-	-
<b>A6 Cash funds last year end</b>	-	-	-	-
<b>Cash funds this year end</b>	2,105	-	-	2,105

## Section B Statement of assets and liabilities at the end of the period

Categories	Details	Unrestricted funds to nearest £	Restricted funds to nearest £
<b>B1 Cash funds</b>	Donations into account	1,080	-
	Expenditure	2,000	-
		-	-
	<b>Total cash funds</b>	<b>920</b>	<b>-</b>
	(agree balances with receipts and payments account(s))		

	Details	Unrestricted funds to nearest £	Restricted funds to nearest £
<b>B2 Other monetary assets</b>		-	-
		-	-
		-	-
		-	-
		-	-
		-	-

	Details	Fund to which asset belongs	Cost (optional)
<b>B3 Investment assets</b>			-
			-
			-
			-
			-

	Details	Fund to which asset belongs	Cost (optional)
<b>B4 Assets retained for the charity's own use</b>			-
			-
			-
			-
			-
			-
			-
			-
			-

	Details	Fund to which liability relates	Amount due (optional)
<b>B5 Liabilities</b>			-
			-
			-
			-
			-

Signed by one or two trustees on behalf of all the trustees

Signature

Print Name



CC16a



Last year  
to the nearest £

-
-
-
-
-
-
-
-
-
-

-
-
-

-
---

-
-
-
-
-
-
-
-
-
-

-
-
-

-
---

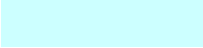
-
-
-
-



**Endowment  
funds**

to nearest £

-
-
-
-



**Endowment  
funds**

to nearest £

-
-
-
-
-
-

**Current value  
(optional)**

-
-
-
-
-

**Current value  
(optional)**

-
-
-
-
-
-
-
-
-

**When due  
(optional)**


**Date of  
approval**
