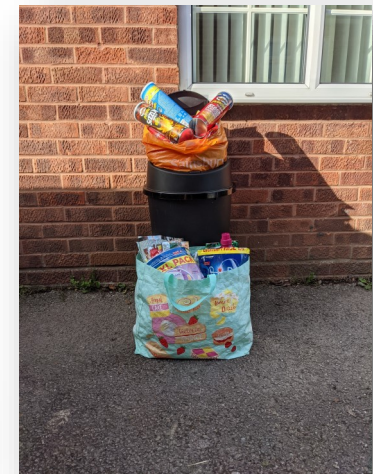




Win on Waste® Annual Report 2020-2021



Win on Waste: 07771 705662, contact@winonwaste.org www.winonwaste.org
Twitter: @winonwaste Facebook: @winonwastedorset Instagram: @winonwaste
c/o CAN, Beech House, 28-30 Wimborne Road, Poole, BH15 2BU

Chair's Report



I'm starting my first report as Chair on a positive note. Win on Waste is back! 'Yes' thanks to all the hard work of Stacey our Business Manager and our lovely Ambassadors and Helpers, we are running Win on Waste sessions again. I know the news was really welcomed by so many people who missed attending the popular sessions. Re-starting the sessions has also been made possible by receiving funding from several funders (listed below). Their money has paid for the hire of halls to enable the sessions to be as Covid secure as possible. Thank you, funders, and again to Stacey for writing the successful applications!

While I'm thanking people, I'd also like to include our Trustees and in particular Cariad Medway-Smith. Cariad offered a wealth of legal expertise and a passion for the work we do, and also ably stepped in as acting-chair. Having completed her three-year term as Trustee, she has now left us and the Trustee team has voted me into the position. Another special thanks goes to Chris Beale who has been looking after our accounts and also Sonia Lomax who kindly deals with our staff salary payments.



On a more general note, never has there been such an important time for charities like ours to be doing our bit to help with the climate change crisis. Although currently, our projects provide the opportunity for local communities to come together and donate items from their waste, we do have plans to see them replicated across the UK so many thousands of people, charities and the environment will benefit. We just need to have the money to achieve this!

Financially this coming year (our ninth) will be a very important one for us. We are truly going to need every penny we receive to continue our work. Therefore please think about donating to us. There are various ways of doing this so please look at our website. You could, of course, help us in other ways by donating your time too! We love to hear from potential volunteers.

Yes, Win on Waste is back and with your help it will be with us for many more years to come.

Monique Munroe, Chair

What We Have Achieved

- Resumed seven Win on Waste collection sessions since June 2021, with more planned to open in January 2022.
- Collected over 420 bags of waste, and an additional 340kg of waste (see graphs below).
- Welcomed nearly 1,000 households to our sessions
- Received nearly £5,000 in funding from 8 local and national funders
- Helped 27 charities in need of fundraising or project items.
- Produced 2 editions of our We Need That! Directory
- Renewed our website at www.winonwaste.org

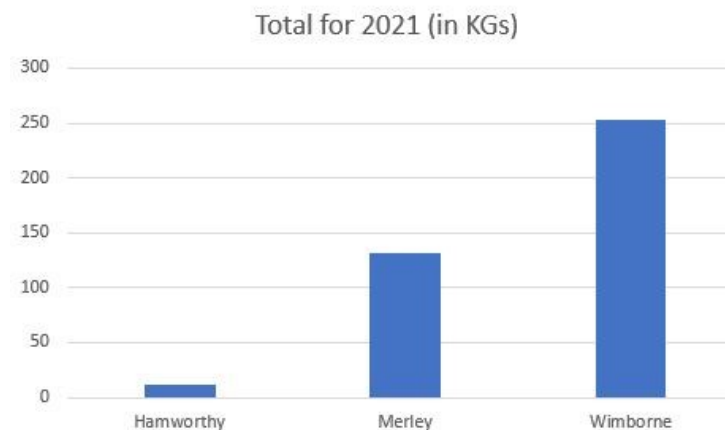
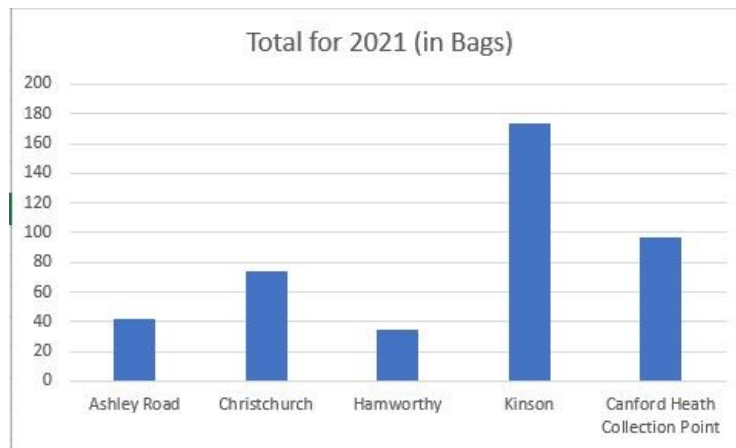
Comments from some of our donors:

"This is a brilliant service to the town..."

"The sessions are so friendly and I feel like I'm helping the environment"

"I think this is a fantastic way for communities to get involved with local projects and get the family to recycle."

"I am really surprised that anyone can make good use of our rubbish and I am glad that it helps local groups and charities in our area."



ANNUAL ACCOUNTS 2020-2021

The Trustees can confirm in accordance with the Charitable Incorporated Organisations (General) Regulations 2012, that at year end, the CIO did not have any outstanding guarantees to third parties, nor any debts secured on assets of the CIO. For a copy of our accounts for 2020/21 please email contact@winonwaste.org.

Income

Our funding comes from a variety of sources, principally grants and donations. We would particularly like to thank our key funders for 2020/21 who are listed individually on the following page, Terracycle who provide a financial donation for the waste we process with them and the generous donations we received from our supporters at our Win On Waste events during 2021. We would also like to thank Miss Elaine Langdown and Ms Katie Mosses for their online donations.

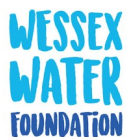
Expenditure

Our principal spending is on staff salaries, although larger than usual amounts have also been spent due to adaptations to our way of working due to Covid-19 and the need to 'start from scratch' at our resumed sessions. We have developed an extensive network of volunteers, groups and activities, including processing a significant amount of waste. All of this requires considerable support and co-ordination.

Incoming Resources	Unrestricted Funds £	Restricted Funds £	Total £ 31.10.21	Total £ 31.10.20
Total Incoming Resources	1,088	5,465	6,553	14,975
Resources Expended	Unrestricted Funds £	Restricted Funds £	Total £ 31.10.21	Total £ 31.10.20
Total Resources Expended	637	9,954	10,951	7,413
Cash funds last year end	4,352	13,161	17,513	9,951
Total funds carried forward	4,803	8,672	14,475	17,513

Funding Success:

In 2020/2021, Win on Waste has been supported by the following funders:



Awarded a grant to support Pass on Plants, February 2021



Awarded funding to allow the re-opening of sessions in the BCP Council area.



Awarded funding to support Win on Waste in Wimborne.



Awarded funding to support Win on Waste sessions and Win on Waste.



Awarded funding to collect medicines blister packs for responsible recycling.



Awarded funding to support Win on Waste sessions and Win on Waste.



Awarded funding to allow us to update our IT equipment.



Awarded funding to support Win on Waste sessions in the Dorset Council area.

Our Thanks go to:

Trustees: Barbara, Cariad, Chris, Harriet and Monique

Staff: Stacey

Salaries: Sonia

Recycling Ambassadors: Barbara, Dave, Debbie, Emma, Gina, Joanne, Laura, Linda, Marion, Millie, Moira, Penelope, Rachel, Richard, Sarah D, Simon, Susan, Vikki.

Win on Waste helpers: Alison, Anna, Charlene, Chloe, Dawn, Duncan, Elizabeth, Erica, Graham, Harriet, Iris, Jade, Janet, Jocelyn, Josie, Kelly, Linda, Lisa (+ Heidi and Toby), Mel, Michael, Mike (x2), Nicola, Paul, Sam, Sue, Rachel, Ragen, Sarah (x2), Steven, Susan, Val, Vanessa, Wendy (x2)

Win on Waste on Wheels Volunteers: David and Renny.

And The Allendale Centre, Kinson Library, The Lantern Church, Lytchett Matravers Library, Hamworthy Library, Lyn Pullen, ARCH (Association for Residents of Canford Heath), CAN, our Ambassadors and Volunteers!



CHARITY COMMISSION
FOR ENGLAND AND WALES

Win On Waste

1170422


Receipts and payments accounts

For the period from	Period start date 1-Nov-20	To	Period end date 31-Oct-21
------------------------	-------------------------------	----	------------------------------

Section A Receipts and payments

	Unrestricted funds to the nearest £	Restricted funds to the nearest £	Endowment funds to the nearest £	Total funds to the nearest £
A1 Receipts				
Donations	176	-	-	176
Terracycle	912	-	-	912
Arnold Clark Foundation	-	1,000	-	1,000
Virgin Media O2	-	1,000	-	1,000
Dorset Council	-	682	-	682
Dorset Community Foundation	-	650	-	650
DPD Green Fund	-	750	-	750
Earth Pathways	-	500	-	500
Other grants	-	883	-	883
Sub total (Gross income for AR)	1,088	5,465	-	6,553
A2 Asset and investment sales, (see table).				
	-	-	-	-
	-	-	-	-
Sub total	-	-	-	-
Total receipts	1,088	5,465	-	6,553
A3 Payments				
Salary	-	9,820	-	9,820
Staff expenses	-	-	-	-
Volunteer expenses	-	-	-	-
Insurance	165	-	-	165
Events/Promotion	-	122	-	122
Stationery/Postage	31	-	-	31
Telephone	117	-	-	117
IT/Office equipment	168	12	-	180
Training	5	-	-	5
Domain name	151	-	-	151
Sub total	637	9,954	-	10,591
A4 Asset and investment purchases, (see table)				
	-	-	-	-
	-	-	-	-
Sub total	-	-	-	-
Total payments	637	9,954	-	10,591
Net of receipts/(payments)	451	- 4,489	-	- 4,038
A5 Transfers between funds	-	-	-	-
A6 Cash funds last year end	4,352	13,161	-	17,513
Cash funds this year end	4,803	8,672	-	13,475

Section B Statement of assets and liabilities at the end of the period

Categories	Details	Unrestricted funds to nearest £	Restricted funds to nearest £
B1 Cash funds	Cash at bank	4,803	8,672
		-	-
		-	-
	Total cash funds	4,803	8,672
	(agree balances with receipts and payments account(s))	OK	OK
B2 Other monetary assets	Details	Unrestricted funds to nearest £	Restricted funds to nearest £
	N/A	-	-
		-	-
		-	-
		-	-
		-	-
		-	-
B3 Investment assets	Details	Fund to which asset belongs	Cost (optional)
	N/A		-
			-
			-
			-
			-
B4 Assets retained for the charity's own use	Details	Fund to which asset belongs	Cost (optional)
	N/A		-
			-
			-
			-
			-
			-
			-
			-
			-
B5 Liabilities	Details	Fund to which liability relates	Amount due (optional)
	N/A		-
			-
			-
			-
			-
Signed by one or two trustees on behalf of all the trustees			
Signature		Print Name	
		Christopher Beale	

CC16a



Last year
to the nearest £

422
4,468
-
-
-
305
9,780
-
14,975

-
-

14,975

6,540
3
199
165
15
113
163
215
-
-
7,413

-

7,413

7,562
-
9,951
17,513



**Endowment
funds**

to nearest £

-
-
-
-

OK

**Endowment
funds**

to nearest £

-
-
-
-
-
-

**Current value
(optional)**

-
-
-
-
-

**Current value
(optional)**

-
-
-
-
-
-
-
-
-

**When due
(optional)**

Date of
approval

21-Nov-21