



WIN ON WASTE

ANNUAL REPORT

2019-2020

Charity No 1170422



Phone: 07771 705662, contact@winonwaste.org, www.ideas2action.org.uk Twitter: @winonwaste
Facebook: @winonwastedorset Registered address: c/o Community Action Network,
Floor 3, Beech House 28-30 Wimborne Road, Poole BH15 2BU



CHAIRMAN'S REPORT

After 7 years, this is sadly my last Chairman's report. I have been involved in the work of Win on Waste (formerly Ideas2Action) from the very beginning. I have to say it's been a privilege to have been part of its expansion and to have witnessed all the changes: from the early days of having only one directory to the 18 monthly Win on Waste sessions which were running before Covid arrived.

Change has certainly been an appropriate word for the whole world this year. For us, it has meant a change of name. Ideas2Action became Win on Waste. We felt Win on Waste was more instantly recognisable as a 'brand' for a recycling charity and would avoid any confusion. We have also had a lot of changes in our routines. From March we went into lockdown and were unable to run our usual Win on Waste sessions. Please see page 4 for a pictorial look at what this has meant for our work.

There have been some changes to our staff and trustee team, see below. We have so much to thank these and everyone who helps and volunteers with us. They really are the lifeblood of our charity. I'll finish my time as chair and wish the charity a very positive and successful future which it so rightly deserves. Nick Ellis *All the trustees would like to thank Nick very much for all his hard work and dedication as our Chair and wish him the very best for the future.*

THANK YOU AND FAREWELL TO TRUSTEES:



Martin Price who shared his wealth of governance and environmental skills and experience with us.



Christopher was another founder member and we owe him a huge amount including his advice and work on our accounts through to rolling up his sleeves and helping us with our Win on Waste sessions from time to time. We are grateful that he will be staying on to help us with our book-keeping until we recruit a new Treasurer. Thank you very much Chris.

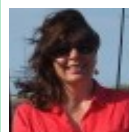
THANK YOU AND FAREWELL TO VOLUNTEERS:

Laura, Jane, Joycelyn, Katrina, Sue and Yvonne. We would particularly like to say a special thank you to Laura who volunteered with us for over 5 years and gave so many hours of her time helping us.

THANK YOU AND FAREWELL TO STAFF:



Simon O'Connor, our Administrator and former Win on Waste on Wheels Co-ordinator who worked hard on both projects supporting volunteers and keeping our paperwork up to date.



Monique Munroe, our former Business Manager, retired in September. Monique was one of the founders of the organisation and it was her vision and hard work that has helped to create the charity Win on Waste is today. We are very pleased that although stepping down from the staff team, Monique will continue working with us as a Trustee.



WELCOME to Stacey Woods our new Business Manager

Also WELCOME to David Watson who is joining us as a Trustee.

ANNUAL ACCOUNTS 2019-20

The Trustees can confirm in accordance with the Charitable Incorporated Organisations (General) Regulations 2012, that at year end, the CIO did not have any outstanding guarantees to third parties, nor any debts secured on assets of the CIO. For a copy of our accounts for 2019/20 please email

contact@winonwaste.org

Income

Our funding comes from a variety of sources, principally grants and donations. We would particularly like to thank our key funders for 2019/20: Terracycle, Awards for All, Bournemouth Water and the generous donations we received from our supporters at our Win On Waste events during December 2019. Also Lesley Cooke, All Saints Branksome Cubs, Nicholson Andrews and St Johns Fellowship.

Expenditure

Our principal spending is on staff salaries. We have developed an extensive network of volunteers, groups and activities, including processing a significant amount of waste. All of this requires considerable support and co-ordination. During 2019/20 we spent £6,540 on salaries, 88% of our expenditure.

Incoming Resources	Unrestricted Funds £	Restricted Funds £	Total £ 31.10.20	Total £ 31.10.19
Total Incoming Resources	5,195	9,780	14,975	19,036
Resources Expended	Unrestricted Funds £	Restricted Funds £	Total £ 31.10.20	Total £ 31.10.19
Total Resources Expended	1,413	6,000	7,413	11,541
Cash funds last year end	570	9,381	9,951	2,456
Total funds carried forward	4,352	13,161	17,513	9,951

[illegible]

★ **Trustees:** Barbara, Cariad, Chris, Harriet, Martin and Nick **Staff:** Monique / Stacey and Simon

★ **Business Win on Waste:** Jeremy **Salaries:** Sonia **Website Statistics Volunteer:** Kirstie

★ **Recycling Ambassadors:** Barbara, Dave, Debbie, Emma, Gina, Jane, Joanne, Katrina, Laura, Linda, Mar, Marion, Millie, Moira, Penelope, Rachel, Richard, Sarah D, Simon, Steph, Susan, Vikki, Yvonne.

★ **Win on Waste helpers:** Alison, Anna, Charlene, Chloe, Dawn, Duncan, Elizabeth, Erica, Graham, Harriet, Iris, Jade, Janet, Jocelyn, Josie, Kelly, Linda, Lisa (+ Heidi and Toby), Mel, Michael, Mike (x2), Nicola, Paul, Sam, Sue, Rachel, Ragen, Sarah (x2), Steven, Susan, Val, Vanessa, Wendy (x2)

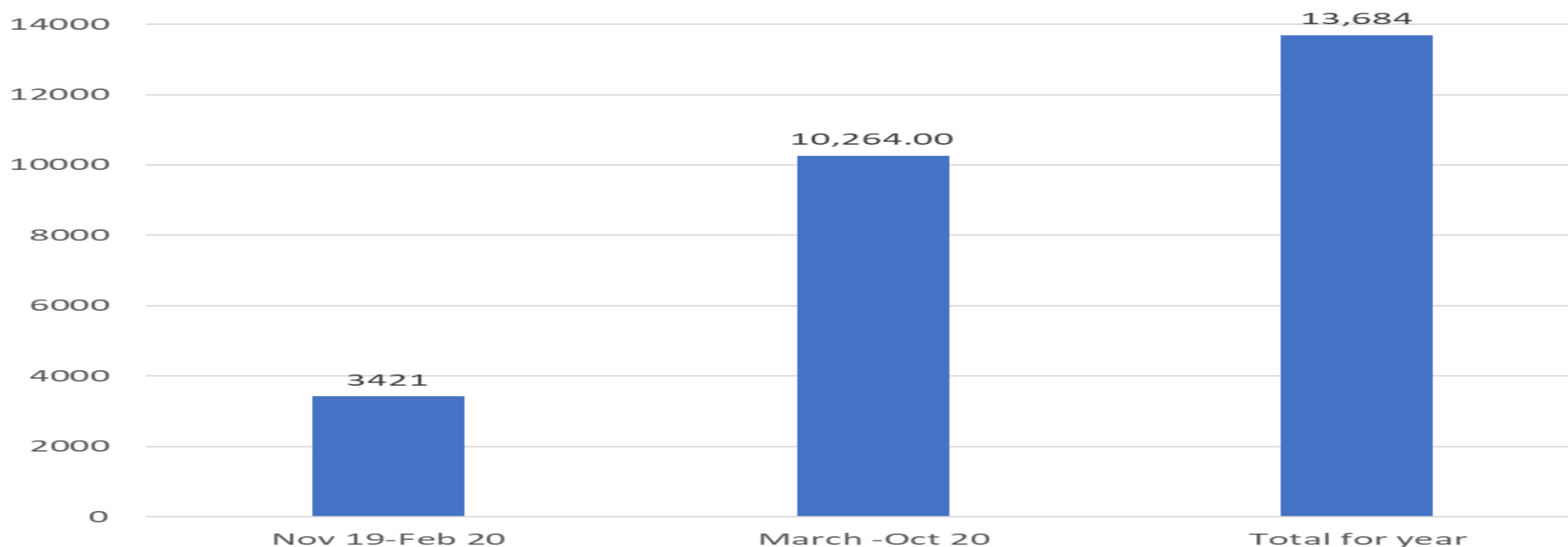
★ **Win on Waste on Wheels Volunteers:** David and Renny.

★ ★ And

★ Ann Stribley, BCP Council, Broadstone Library, Broadstone Link, Canford Heath and Creekmoor Magazines, CFA Trading, Christchurch Library, Community Action
★ Network, Co-op Ashley Road, Corfe Mullen Library, Corfe Mullen Link, Creekmoor Library, Hamworthy Library, Kinson Library, Lantern Church, Livability Holton Lee,
★ Lounge One, Oakdale Library, Parkstone Library, Pilot Pub, Prama, Richard Jefferies, Southbourne Library, Sustainable Dorset, The Spire, Upton Link, Westbourne
★ Library, Wimborne Library and **everyone** who has saved and donated items this year.

[illegible]

Number of bags of waste donated (or what we could have collected without Covid!)



Number of bags actually collected

Projected figures if we hadn't closed down

(our year runs from November to October)
A massive total of 13,684 bags of waste we could have collected and donated to many good causes.

With the latest exciting news about three potential vaccines being rolled out over the coming months, we hope very much that we will be able to restart our Win on Waste sessions next year. However, in the meantime we are.....

- updating our directories and signposting people to other places where they can donate their waste
- creating a new website
- looking at income generation
- researching new ways of working until we can safely run our community recycling sessions again and welcome people like this donor back again: *"I love collecting for the different charities and the buzz of coming to the sessions. It makes me feel I am contributing something! So, I hope we will be able to restart in the future and that those charities have survived this time and that the needs for their use of various 'waste' will still be there."*



CHARITY COMMISSION
FOR ENGLAND AND WALES

Win On Waste

1170422

Receipts and payments accounts

CC16a

For the period
from

Period start date
01-Nov-19


To

Period end date
31-Oct-20

Section A Receipts and payments

	Unrestricted funds to the nearest £	Restricted funds to the nearest £	Endowment funds to the nearest £	Total funds to the nearest £	Last year to the nearest £
A1 Receipts					
Donations	422	-	-	422	1,150
Terracycle	4,468	-	-	4,468	2,037
Dorset County Council	-	-	-	-	188
Wessex Water	-	-	-	-	1,180
Seedbed	-	-	-	-	14,481
CAN Network	305	-	-	305	-
Awards for All	-	9,780	-	9,780	-
	-	-	-	-	-
Sub total (Gross income for AR)	5,195	9,780	-	14,975	19,036
A2 Asset and investment sales, (see table).					
	-	-	-	-	-
	-	-	-	-	-
Sub total	-	-	-	-	-
Total receipts	5,195	9,780	-	14,975	19,036
A3 Payments					
Salary	644	5,896	-	6,540	9,279
Staff expenses	3	-	-	3	62
Volunteer expenses	199	-	-	199	354
Insurance	165	-	-	165	165
Events/Promotion	15	-	-	15	1,017
Stationery/Postage	30	83	-	113	197
Telephone	163	-	-	163	216
IT/Office equipment	194	21	-	215	87
Membership fees/Training	-	-	-	-	30
Trademark registration/domain name	-	-	-	-	134
Sub total	1,413	6,000	-	7,413	11,541
A4 Asset and investment purchases, (see table)					
	-	-	-	-	-
	-	-	-	-	-
Sub total	-	-	-	-	-
Total payments	1,413	6,000	-	7,413	11,541
Net of receipts/(payments)	3,782	3,780	-	7,562	7,495
A5 Transfers between funds	-	-	-	-	-
A6 Cash funds last year end	570	9,381	-	9,951	2,456
Cash funds this year end	4,352	13,161	-	17,513	9,951

Section B Statement of assets and liabilities at the end of the period

Categories	Details	Unrestricted funds to nearest £	Restricted funds to nearest £	Endowment funds to nearest £
B1 Cash funds	Cash at bank	4,352	13,161	-
		-	-	-
		-	-	-
	Total cash funds	4,352	13,161	-
	(agree balances with receipts and payments account(s))	OK	OK	OK
B2 Other monetary assets	Details	Unrestricted funds to nearest £	Restricted funds to nearest £	Endowment funds to nearest £
	N/A	-	-	-
		-	-	-
		-	-	-
		-	-	-
		-	-	-
		-	-	-
B3 Investment assets	Details	Fund to which asset belongs	Cost (optional)	Current value (optional)
	N/A		-	-
			-	-
			-	-
			-	-
			-	-
B4 Assets retained for the charity's own use	Details	Fund to which asset belongs	Cost (optional)	Current value (optional)
	N/A		-	-
			-	-
			-	-
			-	-
			-	-
			-	-
			-	-
			-	-
B5 Liabilities	Details	Fund to which liability relates	Amount due (optional)	When due (optional)
	N/A		-	
			-	
			-	
			-	
			-	
Signed by one or two trustees on behalf of all the trustees		Signature	Print Name	Date of approval
			Christopher Beale	25-Nov-20