

BELOVED ♡

IMPACT REPORT

2024/25



CHARITY NO: 1170261



How to contact us:

Mon-Thurs: 07541 366577

info@beloved.org.uk

Beloved, c/o Burton Sweet
5 Farleigh Court
Old Weston Road
Flax Bourton
BS48 1UR

Visit our website: www.beloved.org.uk
Or scan the QR code for more information



Bank details for donations:

Co-operative bank
Beloved
67258633
08-92-99

BELOVED ♡



CONTENTS

Reference and Administration Information	Pg 4
Structure, Governance and Management	Pg 5
Report of the Trustees <i>(Encompassing Objectives, Activities, Achievements and Performance)</i>	Pg 6-25
Statement of Trustees’ Responsibilities	Pg 26
Independent Examiner’s Report	Pg 27
Statement of Financial Activities	Pg 28
Balance Sheet	Pg 29
Notes to the Financial Statements	Pg 30-36



REFERENCE AND ADMINISTRATION INFORMATION
FOR THE YEAR ENDED 31 MARCH 2025

Address for correspondence	C/O Burton Sweet Ltd The Clock Tower 5 Farleigh Court Old Weston Road Flax Bourton Bristol BS48 1UR
Governing document CIO	Constitution dated 18 November 2016
Charity Registration Number	1170261
Trustees responsible for managing the charity	This charity has been given a dispensation from the charity commission for publishing the names of its trustees.
Bankers	Cooperative Bank PO Box 101 1 Balloon Street Manchester M60 4EP
Independent Examiner	Joshua Kingston, BSc ACA Burton Sweet Limited Chartered Accountants The Clock Tower 5 Farleigh Court Old Weston Road Flax Bourton Bristol BS48 1UR



STRUCTURE, GOVERNANCE AND MANAGEMENT

Beloved is a Charitable Incorporated Organisation (CIO) (number: 1170261), registered in 2016.

The policy and operating decisions of the charity rest with the Trustees who meet regularly to monitor the activities of the organisation.

New Trustees are appointed by the existing body of Trustees in accordance with Paragraph 11.1 of the Constitution.

Beloved has been given a dispensation from the charity commission for publishing the names of its trustees

Key Management Personnel Remuneration

The trustees consider the Board of Trustees, the Director, and the Operations/Finance Lead, as comprising the key management personnel of the charity in charge of directing and controlling the charity and running and operating the charity on a day-to-day basis. Details of trustee expenses and related party transactions are disclosed in note 4 & 12 to the accounts.

Trustees are required to disclose all relevant interests and in accordance with the Trust's policy withdraw from decisions where a conflict of interest arises. The pay of the key management personnel is reviewed annually by the trustees to ensure that it is fair and not out of line with similar roles.



OUR OBJECTIVE

To relieve poverty and hardship, in particular by working with those involved in prostitution or at risk of being drawn into prostitution as a result of unemployment, poverty, deprivation, financial hardship, ill-health, or disability and to do so:

- (i) for the public benefit;
- (ii) throughout the United Kingdom,
- (iii) in pursuance of Christian principles; and
- (iv) in accordance with the Statement of Faith.

OUR MISSION

To support women working in any area of the indoor sex industry including parlours, escorting and online, in Bristol and the surrounding areas, promoting the dignity and self worth of every woman that we meet. Whether they are remaining in the industry, seeking to leave or have already left, we walk alongside women, raising their awareness of opportunities and supporting them to address any physical, emotional, economic and spiritual needs they may identify.

A LETTER FROM THE CHAIR

Dear Friends,

At Beloved we focus on seeking the flourishing of individual women, and we have been encouraged this year to witness that flourishing, as women move on in finding safety, accommodation, employment, and improved mental health.

Flourishing can only be brought about by patient, one to one, walking alongside our women; developing their wellbeing over a period of years, being led by their needs. Our wonderful Women's Workers skillfully and faithfully navigate that journey with them.

Flourishing is slow work, quick outcomes are not anticipated, but we are confident that the work Beloved carries out will increasingly contribute to the social benefit and wellbeing of the city of Bristol as a whole.

We are thankful to our generous donors for the financial resources that have enabled us to achieve our strategic aims this year and also for our many wonderful volunteers who give of their time and talents in organising events and accompanying our women on outings.

But we will not allow ourselves to become complacent. We recognise the work that is required to maintain our achievements, and create the growth and expansion in services and innovation we aspire to.

All charities have been impacted by the current uncertain unfavourable financial climate with increased demand for services along with funders and donors being more cautious. This effect is especially detrimental to charities on the front line such as Beloved, who deliberately maintain a low profile so that we do not attract too much attention to ourselves when we visit parlours. Not for Beloved - the celebrity champion, campaigning, or lobbying.

A LETTER FROM THE CHAIR

The convictions of Romanian Traffickers in 2024 and 2025 serves to highlight that the women our volunteers and staff work with in the parlours are likely to be caught up with organised crime and trafficking.

<https://www.gloucestershirelive.co.uk/news/gloucester-news/organised-crime-gang-trafficked-women-9075812.amp>

<https://www.bbc.com/news/articles/c2ewv443dx3o>

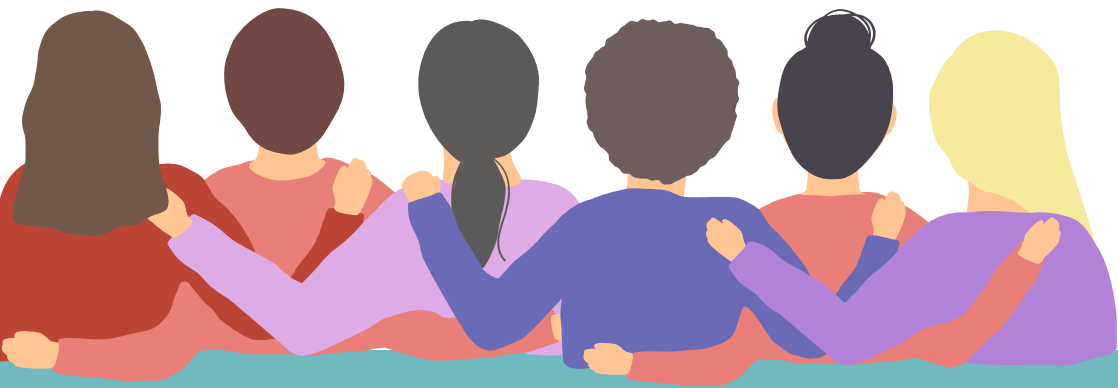
To that end, the collaborative working that Beloved has with local statutory agencies is something that we celebrate and seek to develop. We are grateful that the Police & Crime Commissioner is keen to tackle the issue of violence against women and girls.

At Beloved, as we move forward into the coming year, we are conscious of our challenges, but confident in our ability with God's blessing and provision to build on our achievements, seeking the flourishing of every woman that engages with us.

"We urge you not to let those challenges to dim nor shroud the huge impact you are having every day."

David Holdsworth CEO Charity Commission 21st May 2025.

I commend this annual report to you.



HOW DOES BELOVED SUPPORT?

- Outreach
- Casework
- Community
- Well-being
- Prayer
- Partnerships
- Referrals

Review of Activities

Our support for women working in the indoor sex industry involves the following key elements:

Parlour visits

Outreach to meet women where they are, in the massage parlours. Our team offer time to talk alongside safety information from 'Ugly Mugs' and panic alarms. Many of the women we meet aren't engaged with any other services and are very isolated. This is frontline, missional work where we share the good news of Jesus and have profound moments of connection.

One-to-one casework

Supporting women to access accommodation, employment, benefits, sexual health and primary care services as well as other specialist support within Bristol. We are able to assist women with issues such as EU settlement, provide access to short-term emergency financial assistance and liaise with our network of local supporters to meet any other needs the women may have.

Wellbeing activities

As requested by the women we have been able to offer a variety of sessions that promote the physical, emotional and spiritual wellbeing of the women we support, like movement and art workshops, reflective therapy and volunteering around local flower farm. Days out and weekends away together help give fresh hope, perspective and community.



Impact Snapshot

1067

1-1 Casework
hours completed

56

Women given
ongoing support

1797

Group sessions
hours completed

36

Wellbeing
workshops,
activities and trips

43

Parlour visits
offering safety
information and
practical support

Projects

Outreach

Visits to massage parlours
and pop-up brothels.

Casework

1:1 practical and emotional
support for women outside of
the parlour context.

Housing

Positive move ons away
from parlours and rogue
landlords.

Employment

Supporting women with
CVs, job applications and
referrals to work programs.

Wellbeing

Wellbeing workshops and
activities, reducing isolation,
increasing skills and
improving mental health.

Spiritual Support

Providing an ongoing listening
service, offering prayer and
church connection.

Outcome

- 46 women given safety information and advice during visits.
- 19 women supported with formal documentation including ID
- 10 women moved into more secure, independent accommodation.
- 11 women newly in employment, training or volunteering.
- 28 women accessed wellbeing workshops, including residential camps, art therapy and group drop ins.
- 45 women empowered in their faith through prayer, study and community.



94%

Helped in reducing isolation through our wellbeing outings, meet ups and emotional support.

87%

Have increased personal safety through our ugly mugs reports, safety alarm distribution and safety planning.



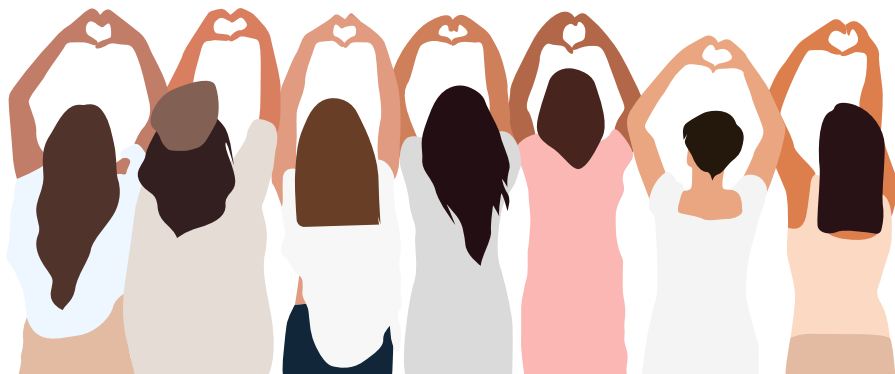
87%

Received faith connection through prayer, church attendance and Christian conferences.

63%

Have had barriers to exiting the sex industry reduced through support with housing and formal documentation.

PARTNERSHIPS



MULTI AGENCY WORKING

Beloved work with a number of organisations across the city and nationally, and are appreciative that we all play our part in the whole to provide services where they are needed for those most disadvantaged. Some of the groups we have been honoured to take part in include: International Women's Day, Stewardship Cross Cultural Women's event, Bristol Homelessness Forum, Women's Rough Sleeping Census, training to the local police force.

The number of referrals from partner agencies have increased this year to 21 and include those made by: Beyond the Streets, Bristol Drug Project and Adult Social Care, with referrals made to CAP, CAB, DHI, Foodbank, Unity Sexual Health, Nelson Trust, SARSA, Homestart plus many primary care services.

This year we have been thrilled to offer our women a paid-for, direct pathway to counselling via Bourne Family Project and we continue our pathway into employment through Lovewell.

Finally, we have been able to share insights and feed into academic research: 'A Critical Review of Substance-Use Services for Individuals Engaged in the Sex Industry Through In-Person Work', Dr Emma Smith.



WORKING WITH LOCAL CHURCHES

We are so grateful to the church community in Bristol who so **generously give** resources, **volunteers**, **profile** and **finances** to us, but mostly gratitude for holding us in **prayer**.

Over the last year we have partnered across the city with churches by putting on events like our 'Dinner and Dance' in July; supporting women through the Cost of Living Crisis by sending out recipe kits/food packs and organising trips away to camps and spiritual retreats where women get the opportunity to have a holiday and experience a faith community.

Thanks to Woodlands Group, Hope Chapel, Life Church, City Church, Central, B&A, St Nick's, Thornbury Baptist, Mustard Tree, E5 and TLC for their regular support and the many other churches who have kindly gifted us, invited us to speak and faithfully prayed.

"IT SEEMS TO ME THAT THE WORK OF BELOVED HEIGHTENS THE AWARENESS OF GOD'S DIVINE PRESENCE WITHIN SPACES WHICH ARE NOT NECESSARILY SEEN AS SACRED, BUT BECOME PLACES OF ENCOUNTER - AND ARE THEREFORE OVERTLY SACRED."

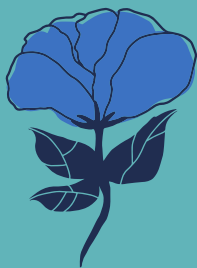
Rev Patrick Stonehewer, Church Leader & Supporter of Beloved



£7500 IN
DONATED
GOODS!

1500
VOLUNTEER
HOURS!





“I LOVE VOLUNTEERING FOR BELOVED BECAUSE IT’S REALLY SPECIAL SEEING GOD’S HAND AT WORK. YOU’RE HELPING WOMEN SEE HIS GRACE AND FEEL GENUINELY CARED FOR, AND IT’S SUCH A JOY TO BE A PART OF SOMETHING THAT SHOWS THEM HOW GOOD GOD IS. ALL THE STAFF AND VOLUNTEERS ARE REALLY LOVELY TOO!”

**LAURA, LOCAL BUSINESS OWNER AND
VOLUNTEER WORKSHOP LEADER**

**BAKING CUPCAKES
TO LEADING OUTREACH,
BEFRIENDING TO
FUNDRAISING,
RUNNING WORKSHOPS
TO RAISING AWARENESS-
WE COULD NOT DO IT
WITHOUT OUR
VOLUNTEERS!**



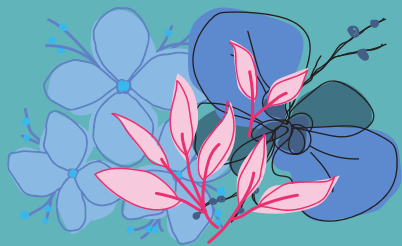
Elena's Story

We were introduced to Elena through one of her friends that we met on outreach into the parlours. She is originally from Romania and had been in the UK a while, having been offered work, a home and promised a better life here. The work ended up being in various parlours selling sex. She wanted to exit, find a different job, and bring her child to live with her in the UK.

Although Elena speaks some English, she was struggling with the confidence to do things herself and needed support to be shown how. Our Romanian caseworker was able to help her apply for the correct benefits so she had some income to leave the sex industry, and advise her around housing, as she had been living in the parlour. We helped her with immigration documentation and referred her to a local food bank when she had no food. We were also able to offer her our hardship payment of £80 a week for six weeks whilst she waited for the benefits she had applied for to start. With this support Elena was able to find somewhere to live and make it home.

We spoke with her about jobs that she might like to do and she found work as a cleaner. When her daughter arrived in the UK we were able to support her in applying to a local school and link her in with some community provision, however Elena was struggling to get to work and home in time to pick her child up from school. We therefore funded an electric bike for her so she could get around quickly. This has enabled her to maintain the job long term.

Elena and her daughter are now thriving and we continue to meet with her for emotional support and to help with any practical aspects as she identifies them.



“I AM DEEPLY AND TRULY GRATEFUL FOR BELOVED’S SUPPORT, FOR THE HELP AND CARE YOU’VE SHOWN ME. THE FACT THAT I’M DOING WELL TODAY - IN FACT, BETTER THAN EVER - IS ENTIRELY BECAUSE OF YOU. FROM THE BOTTOM OF MY HEART, THANK YOU. I WILL BE FOREVER THANKFUL FOR HOW YOU PULLED ME OUT OF THE DARK, BROKEN LIFE I WAS LIVING. BECAUSE OF YOU, I’VE BECOME THE PERSON I AM TODAY - SOMEONE COMPLETELY TRANSFORMED, FULFILLED AND GENUINELY HAPPY.”

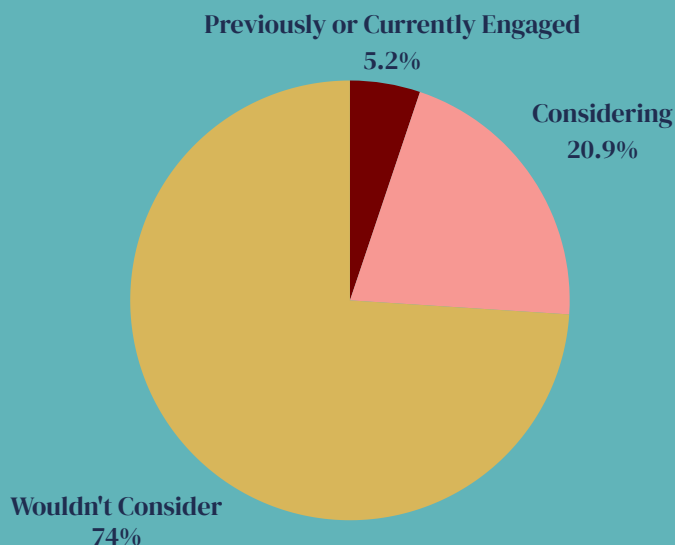


STUDENTS IN THE SEX INDUSTRY

Beloved felt it a priority to explore the concerning trend of university students in the UK turning to the sex industry due to financial pressures, therefore we launched a pilot project, in September, aiming to connect with female students safely and non-judgmentally. By collaborating with universities, students, and other organisations, we sought to understand who these students were, their real and perceived needs, and how to support them.

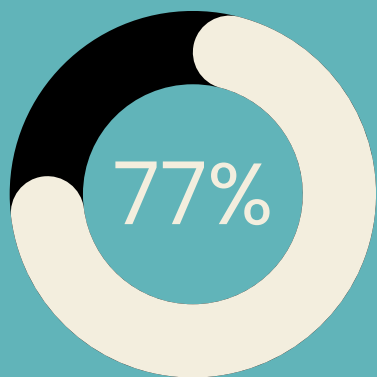
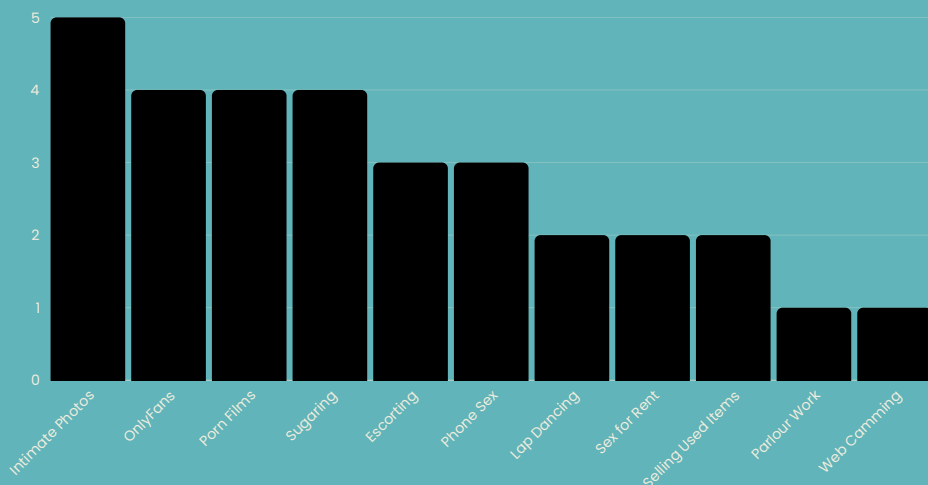


Survey Says

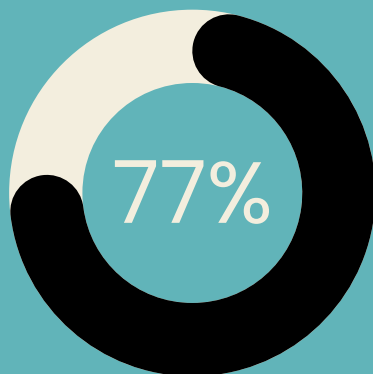


Survey Says

Types of Sex Work Bristol Students Engage In



Conceal from everyone or almost everyone.



Reported it was necessary for financial reasons.

"I STARTED (SUGARING) DURING THE FIRST TERM OF UNIVERSITY; I'M ESTRANGED FROM MY PARENTS, SO FUNDING MY LIVING COSTS FELT PARTICULARLY STRESSFUL EVEN WITH BURSARIES. "

Director's View

2024/2025 has been a very positive year for Beloved organisationally. Our focus was to move from a position of stabilising after a tough financial period, to one of growth, and we have seen that in our service, team and finances.

However this growth alerts us to the need there is: we have increased the number of parlours visited to 16 from the 5 visited during Covid years, having seen new massage parlours open and been alerted to others. We have also received an increase in individuals referred for casework with many women struggling with the cost of living. Whilst we are glad we have grown our capacity to meet this, it sadly shows how much more there is to do in this very hidden sector of society.

An additional focus for us this year has been our student project. We employed a Project Lead to take on a pilot, connecting with Bristol's two Universities to open a conversation about students engaging in the sex industry. Through our on-campus surveys we found local figures matched the national statistic of 20% of students considering it as a way to subsidise their income. More worryingly, 0% stated they would go to their Universities for support. We want to be available to those students and other young women in our city and we will continue these partnerships to develop what we have started.

Income - we have been successful in achieving our grant income, setting us in a good position for the next year and with some multi-year funding, are thankful to be in a secure position. For this we are very grateful to our funders and donors. Community fundraising has also been on the increase with a wonderful fundraising event in the summer, held at Woodlands Church, with an auction, live band and three-course meal. It was a chance to celebrate all that Beloved has achieved with much support and care from Bristol and the wider community.

Looking towards the coming year, we are thrilled to have received funding from Quartet for a researcher who will spend a year with us, getting to know the women we support and finding out from them how we can best serve them, which will feed into future direction for the charity. We will be pleased to share those findings next year.

We recognise that we play our part, alongside so many other amazing organisations, services and faith groups in reaching some of the most disadvantaged. It is a privilege to partner with them and be in a city with such unity and pioneering spirit. We extend all appreciation to them and to the women Beloved has the joy of journeying alongside, who show resilience, faith and beauty in the midst of difficulty - we honour you all.

I leave you with the words below that resonated with me on a recent mission trip to a drug rehabilitation centre in Swaziland. As I observed these lives transformed, now full of joy and hope, I reflected on how Jesus likes to take those society has marginalised and overlooked and shine His glory through. True for us all when we feel of little worth and an encouraging reminder for the women we meet on our outreach. At that moment it seemed to me that Jesus was very pleased with all of us, even with our baggage and broken bits and wanting to make it very clear that in His upside down kingdom, His light and love was winning out!



Finances

The charity's income in the reporting period to 31 March 2025 was £378,524 (2024: £203,416). Expenditure was £177,714 (2024: £136,262).

This year has been a positive one financially for Beloved, with income having significantly exceeded our expected budget. As a result, we have been able to increase our reserves to a more fitting level given the relational nature of Beloved, and look towards growth.

The increase in income has been largely due to the employment of a Grants Fundraiser for two days a week who has worked hard to secure us multi-year funding. Also the appointment of a new role: 'Engagement Coordinator' in 2023 has grown awareness of our cause and gained us generous financial support from both regular and one-off donors.

With the additional funds we plan to enlarge our frontline team with an additional caseworker and increase the capacity of our core office team to balance the increase. We will continue to look for ways to develop our service to meet the needs of the women we support.

It is important to note that due to this year's increased income, the Independent Examination of our accounts has been carried out on the accruals basis rather than the previous receipts and payments basis. This means that Grant Income of £136,000 (split between £106,000 of unrestricted income and £30,000 of restricted income) due to be received in future financial years has been recognised as income within this year's accounts. The 2023/24 financial year figures have also been restated in this year's accounts for comparative purposes.

Reserves Policy

The Trustees review the reserve levels of the charity annually. This review encompasses the nature of the income and expenditure streams, the need to match income with commitments and the nature of reserves. The Trustees also take into consideration the future of the charity, the uncertainty over future income streams and other key risks identified during the risk review.

Total current funds are £323,286 of which £61,491 is held in restricted funds. Further explanation and the nature and purpose of each fund is included in note 10 of the financial statements. The current level of free reserves is £261,795, which is inclusive of £106,000 unrestricted accrued income to be received over the next few years, and the trustees believe that this is sufficient to meet contractual liabilities should the charity have to close or cease activity for any period.

Thank You



BELLOVED ♥

*We support women
who have experience of
the indoor sex industry*



*We promote the value, dignity and wellbeing
of all women who access our support*

hello@beloved.org.uk
www.beloved.org.uk



Registered charity number 1170261

Statement of Trustees' Responsibilities

The trustees are responsible for preparing the Trustees' Report and the financial statements in accordance with applicable law and United Kingdom Accounting Standards including Financial Reporting Standard 102: The Financial Reporting Standard applicable in the UK and Republic of Ireland (United Kingdom Generally Accepted Accounting Practice).

The law applicable to charities in England & Wales requires the trustees to prepare financial statements for each financial year which give a true and fair view of the state of affairs of the charity and of the income and expenditure of the charity for that period. In preparing these financial statements, the trustees are required to:

select suitable accounting policies and then apply them consistently;

observe the methods and principles in the Charities SORP;

make judgments and accounting estimates that are reasonable and prudent;

state whether applicable UK Accounting Standards have been followed, subject to any material departures disclosed and explained in the financial statements; and

prepare the financial statements on the going concern basis unless it is inappropriate to presume that the charity will continue in business.

The trustees are responsible for keeping sufficient accounting records that disclose with reasonable accuracy at any time the financial position of the charity and enable them to ensure that the financial statements comply with the Charities Act 2011, the Charity (Accounts and Reports) Regulations 2008 and the provisions of the trust deed/constitution. They are also responsible for safeguarding the assets of the charity and hence for taking reasonable steps for the prevention and detection of fraud and other irregularities.

This report was approved by the trustees on 19 November 2025 and signed on their behalf by:



Alison Wint
Chair of Trustees

Independent Examiner's Report to the Trustees of Beloved

I report to the trustees on my examination of the accounts of Beloved (the Charity) for the year ended 31st March 2025.

Responsibilities and basis of report

As the charity trustees of the Charity you are responsible for the preparation of the accounts in accordance with the requirements of the Charities Act 2011 ('the Act').

I report in respect of my examination of the Charity's accounts carried out under section 145 of the 2011 Act and in carrying out my examination I have followed all the applicable Directions given by the Charity Commission under section 145(5)(b) of the Act.

Independent examiner's statement

Since the Charity's gross income exceeded £250,000 your examiner must be a member of a body listed in section 145 of the 2011 Act. I confirm that I am qualified to undertake the examination because I am a member of the Institute of Chartered Accountants in England and Wales, which is one of the listed bodies.

I have completed my examination. I confirm that no material matters have come to my attention in connection with the examination giving me cause to believe that in any material respect:

1. accounting records were not kept in respect of the Charity as required by section 130 of the Act; or
2. the accounts do not accord with those records; or
3. the accounts do not comply with the applicable requirements concerning the form and content of accounts set out in the Charities (Accounts and Reports) Regulations 2008 other than any requirement that the accounts give a 'true and fair view which is not a matter considered as part of an independent examination.

I have no concerns and have come across no other matters in connection with the examination to which attention should be drawn in this report in order to enable a proper understanding of the accounts to be reached.

Joshua Kingston

Joshua Kingston BSc ACA
Burton Sweet Limited
The Clock Tower
5 Farleigh Court
Old Weston Road
Flax Bourton
Bristol BS48 1UR

Date:

19 November
2025

BELOVED**STATEMENT OF FINANCIAL ACTIVITIES****YEAR ENDED 31 MARCH 2025**

	Note	Unrestricted Funds £	Restricted Funds £	Total Funds 2025 £	Restated Total Funds 2024 £
Income from:					
Donations and legacies	2	297,505	80,319	377,824	203,145
Investments		700	-	700	271
Total income		<u>298,205</u>	<u>80,319</u>	<u>378,524</u>	<u>203,416</u>
Expenditure on:					
Charitable activities	3	80,932	96,782	177,714	136,262
Total expenditure		<u>80,932</u>	<u>96,782</u>	<u>177,714</u>	<u>136,262</u>
Net income / (expenditure) and net movement in funds	4	217,273	(16,463)	200,810	67,154
Total funds at start of year	10	44,522	77,954	122,476	55,322
Total funds at end of year	10	<u>261,795</u>	<u>61,491</u>	<u>323,286</u>	<u>122,476</u>

The Charity has no recognised gains or losses other than the results for the year as set out above.

All of the activities of the charity are classed as continuing.

The notes on pages 30 to 36 form part of these financial statements
See note 7 for fund-accounting comparative figures

BELOVED
BALANCE SHEET
AS AT 31 MARCH 2025

	Note	2025 £	Restated 2024 £
Current assets			
Debtors	8	136,860	60,791
Cash at bank and in hand		190,919	66,679
		<u>327,779</u>	<u>127,470</u>
Liabilities			
Creditors : amounts falling due within one year	9	(4,493)	(4,994)
Net current assets		<u>323,286</u>	<u>122,476</u>
Net assets		<u><u>323,286</u></u>	<u><u>122,476</u></u>
FUNDS			
Unrestricted funds			
General funds	11	261,795	44,522
Restricted funds	11	61,491	77,954
Total funds		<u><u>323,286</u></u>	<u><u>122,476</u></u>

These financial statements were approved by the Trustees on 9 November..... and are signed on their behalf by:
2025



Alison Wint
Chair of Trustees

The notes on pages 30 to 36 form part of these financial statements

BELOVED

NOTES TO THE FINANCIAL STATEMENTS

YEAR ENDED 31 MARCH 2025

1 Accounting policies

Accounting convention

The accounts (financial statements) have been prepared in accordance with the Statement of Recommended Practice: Accounting and Reporting by Charities preparing their accounts in accordance with the Financial Reporting Standard applicable in the UK and Republic of Ireland (FRS 102) issued in October 2019 and the Financial Reporting Standard applicable in the United Kingdom and Republic of Ireland (FRS 102) and the Charities Act 2011 and UK Generally Accepted Practice as it applies from 1 January 2019.

The accounts (financial statements) have been prepared to give a 'true and fair' view and have departed from the Charities (Accounts and Reports) Regulations 2008 only to the extent required to provide a 'true and fair view'. This departure has involved following Accounting and Reporting by Charities: Statement of Recommended Practice applicable to charities preparing their accounts in accordance with the Financial Reporting Standard applicable in the UK and Republic of Ireland (FRS 102) issued in October 2019 rather than the Accounting and Reporting by Charities: Statement of Recommended Practice effective from 1 April 2005 which has since been withdrawn.

The charity is a public benefit entity as defined under FRS102. The Trustees consider that there are no material uncertainties affecting the ability of the charity to continue as a going concern.

Income

Income from donations is included in income when these are receivable, except as follows:

- I. When donors specify that donations given to the charity must be used in future accounting periods, the income is deferred until those periods;
- II. When donors impose conditions which have to be fulfilled before the charity becomes entitled to use such income, the income is deferred until the pre-conditions have been met.

Investment income is included on a receivable basis.

Expenditure

Expenditure is recognised in the period in which it is incurred. Expenditure includes attributable VAT which cannot be recovered.

Charitable Activities

Expenditure relating directly to the furtherance of the charity's objects is classified as costs of charitable activities and includes governance costs associated with meeting the constitutional and statutory requirements of the charity.

Liabilities are recognised as expenditure generally as soon as there is a legal or constructive obligation committing the charity to the expenditure.

In the case of goods supplied or services provided by a third party, the expenditure is recognised in full as soon as that third party has supplied the goods or provided the services.

Pension costs and other post-retirement benefits

The charity contributes to defined contribution pension schemes. Contributions payable to the charity's pension schemes are charged to the Statement of Financial Activities in the period to which they relate.

Tangible fixed assets

Fixed assets are held at cost less accumulated depreciation.

The fixed asset register consists of a list of items (or specific group of items purchased within the accounting period) valued over £2,000 that are considered to have a life longer than the financial year they were purchased in. Capital assets are not necessarily bought on one order; so long as a group of items are purchased within the same accounting period they will be capitalised.

Debtors

Trade and other debtors are recognised at the settlement amount due after any trade discounts offered. Prepayments are valued at the amount prepaid net of any trade discounts due.

BELOVED

NOTES TO THE FINANCIAL STATEMENTS

YEAR ENDED 31 MARCH 2025

1 Accounting policies (continued)

Cash at bank and in hand

Cash at bank and cash in hand includes cash and short term highly liquid investments with short maturity of three months or less from the date of acquisition or opening of the deposit or similar account.

Creditors

Creditors are recognised where the charity has a present obligation resulting from a past event that will probably result in the transfer of funds to a third party and the amount due to settle the obligation can be measured or estimated reliably. Creditors are normally recognised at their settlement amount after allowing for any trade discounts due.

Fund accounting

Unrestricted funds can be used in accordance with the charitable objects at the discretion of the trustees.

Restricted funds can only be used for particular restricted purposes within the objects of the charity. Restrictions arise when specified by the donor or when funds are raised for particular restricted purposes.

Designated funds form part of unrestricted funds and have been identified as being for particular purposes by the Trustees. They are not restricted and can be transferred to general funds at any time at the discretion of the Trustees.

Further explanation of the nature and purpose of each fund is included in note 10 of the financial statements.

2 Income from: Donations and legacies

	Unrestricted Funds £	Restricted Funds £	Total Funds 2025 £
Donations	72,136	-	72,136
Gift Aid	2,834	-	2,834
Fundraising donations	8,780	-	8,780
Grants received	205,263	80,319	285,582
Donated goods and services	8,492	-	8,492
	<u>297,505</u>	<u>80,319</u>	<u>377,824</u>
Prior year comparatives - Restated	Unrestricted Funds £	Restricted Funds £	Total Funds 2024 £
Donations	63,758	76,200	139,958
Fundraising donations	1,210	5,000	6,210
Grants received	29,200	20,600	49,800
Donated goods and services	7,177	-	7,177
	<u>101,345</u>	<u>101,800</u>	<u>203,145</u>

BELOVED

NOTES TO THE FINANCIAL STATEMENTS

YEAR ENDED 31 MARCH 2025

3 Expenditure on: Charitable activities

	Total 2025 £	Restated Total 2024 £
Employment and subcontractors costs	118,079	94,014
Property costs	10,282	6,462
Administration and exiting costs	18,368	11,508
Governance costs	2,520	1,440
Outreach	11,261	5,600
Fundraising	210	4,649
Insurance	911	122
Events	3,616	2,248
Donations	50	-
Donated goods and services	8,492	7,177
Other costs	3,925	3,042
	<u>177,714</u>	<u>136,262</u>

4 Net income/(expenditure) for the year

This is stated after charging:

	2025 £	2024 £
Independent Examiner's remuneration	2,520	1,440

1 Trustee has been reimbursed expenses for training and membership costs of £113 (2024: No Trustees for £Nil). 1 Trustee received remuneration during the year for counselling services for our service users, this is allowable under Clause 7 of our Charity Constitution. Total remuneration paid to Trustees in the year was £1,003 (2024: No Trustees for £Nil)

Aggregate donations from Trustees, key management personnel, and other related parties was £4,207 (2024: £2,900).

5 Staff costs and numbers

The aggregate payroll costs were:

	2025 £	2024 £
Wages & salaries	111,340	86,965
Social security costs	1,473	1,204
Pension contributions	5,266	4,348
	<u>118,079</u>	<u>92,517</u>

No employee received emoluments of more than £60,000.

The average weekly number of employees during the year was 7 (2024: 6), calculated on the basis of average headcount. The total employment benefits received by key management personnel including employer national insurance and employer pension were £41,481 (2024: £43,791).

BELOVED

NOTES TO THE FINANCIAL STATEMENTS

YEAR ENDED 31 MARCH 2025

6 Taxation

The charity is exempt from corporation tax on its charitable activities.

7 Statement of Financial Activities comparative figures - Restated

For the year ended 31 March 2024	Unrestricted Funds £	Restricted Funds £	Total Funds 2024 £
Income from:			
Donations and legacies	101,345	101,800	203,145
Investments	271	-	271
Total income	101,616	101,800	203,416
Expenditure on:			
Charitable activities	102,345	33,917	136,262
Total expenditure	102,345	33,917	136,262
Net income/(expenditure) for the year	(729)	67,883	67,154
Transfers between funds	(50)	50	(67,154)
Net movement in funds	(779)	67,933	67,154
Total funds at start of year	45,301	10,021	55,322
Total funds at end of year	44,522	77,954	122,476

8 Debtors

	2025 £	2024 £
Prepayments	860	791
Accrued income	136,000	60,000
	136,860	60,791

9 Creditors: amounts falling due within one year

	2025 £	2024 £
Trade creditors	1,027	2,964
Other creditors	781	590
Accruals	2,685	1,440
	4,493	4,994

BELOVED

NOTES TO THE FINANCIAL STATEMENTS

YEAR ENDED 31 MARCH 2025

10 Movement in funds

For the year ended 31 March 2025

	At 1 April 2024 £	Income £	Expenditure £	Transfers £	At 31 March 2025 £
Unrestricted funds					
General Funds	44,522	298,205	(80,932)	-	261,795
	<u>44,522</u>	<u>298,205</u>	<u>(80,932)</u>	<u>-</u>	<u>261,795</u>
Restricted funds					
Anonymous: Promotional Film	276	-	(276)	-	-
Awards for All	-	20,000	(20,000)	-	-
Garfield Weston	-	15,000	(15,000)	-	-
Hardship Fund	6,636	-	(3,909)	-	2,727
John James	1,192	10,000	(7,477)	-	3,715
Anonymous: Developing Work	64,883	-	(28,340)	-	36,543
Oliver Borthwick Fund	1,167	-	(997)	-	170
Quartet - Community Foundation Resilience	-	9,819	(415)	-	9,404
Quartet - Express Fund	-	5,000	(5,000)	-	-
Quartet Police & Crime Commissioner	-	10,000	(7,555)	-	2,445
Renishaw Charities Committee	-	500	(500)	-	-
St Stephens & St James - Co- ordinator	3,800	-	(2,129)	-	1,671
St Stephens & St James - Nurture Programme	-	5,000	(1,615)	-	3,385
Westhill Endowment	-	5,000	(3,569)	-	1,431
	<u>77,954</u>	<u>80,319</u>	<u>(96,782)</u>	<u>-</u>	<u>61,491</u>
Total funds	<u>122,476</u>	<u>378,524</u>	<u>(177,714)</u>	<u>-</u>	<u>323,286</u>

Fund Descriptions

Restricted Funds

A Wint - Orchards Conference - A donation for staff to have a team away day to 'Orchard's women's conference.'

Anonymous: Promotional Film - Grant funding for the creation of a film to promote our services and share information of our work externally.

Awards for All - For the funding of 'move-on/drop-in work' managed and coordinated by the 'transition worker' and is restricted to paying their salary.

Burden Trust - Funding for the salary of the Women's support worker.

Christmas gifts - Funding for our Christmas gifts for the women.

Direct Grants for Women - Funding received for specific needs such as new carpet/white goods for women.

Garfield Weston - Funding for our core costs, namely caseworker salaries.

Hardship Fund - A direct fund for emergency exiting support costs for women.

John James - Funding for charity projects.

BELOVED

NOTES TO THE FINANCIAL STATEMENTS

YEAR ENDED 31 MARCH 2025

10 Movement in funds (continued)

Anonymous: Developing work - Funds received for the use of new and developing work, including towards salaries of a case worker, operation and finance salaries and project costs.

Oliver Borthwick Fund - Funding for housing, accommodation and prevention of homelessness.

Quartet Community Foundation Resilience - For organisational resilience, a researcher and related costs to carry out an audit of the women and their needs.

Quartet Express Fund - Core costs (rent and utilities).

Quartet Police & Crime Commissioner - Funds towards cost of living crisis, used for caseworker salaries and winter well-being packs for clients with essentials and self care items over the winter months.

Quartet Well-being Workshops - To reduce isolation, build community and offer the women a chance to be in a different environment, examples are horse riding, spa days, arboretum visits.

Renishaw Charities Committee - Vocational training and support. Grant given to a service user to start their own business.

St Stephens & St James Co-ordinator Grant - Awarded towards the salary of an Engagement Coordinator.

St Stephens & St James Nurture Programme - Wellbeing events and therapy for service users.

Westhill Endowment - Outreach expenses, mileage and supplies.

Designated Funds

Joseph Rank Trust - A Caseworker salary.

For the year ended 31 March 2024 - Restated

	At 1 April 2023 £	Income £	Expenditure £	Transfers £	At 31 March 2024 £
Unrestricted funds					
General Funds	39,021	101,616	(96,065)	(50)	44,522
Designated Funds					
Joseph Rank Trust	6,280	-	(6,280)	-	-
	<u>45,301</u>	<u>101,616</u>	<u>(102,345)</u>	<u>(50)</u>	<u>44,522</u>
Restricted funds					
A Wint - Orchards Conference	-	200	(200)	-	-
Anonymous: Promotional Film	716	-	(440)	-	276
Burden Trust	-	5,000	(5,000)	-	-
Christmas gifts	-	1,000	(1,050)	50	-
Direct Grants for Women	-	600	(600)	-	-
Garfield Weston	939	-	(939)	-	-
Hardship Fund	2,711	5,000	(1,075)	-	6,636
John James	-	10,000	(8,808)	-	1,192
Anonymous: Developing Work	-	70,000	(5,117)	-	64,883
Oliver Borthwick Fund	1,167	-	-	-	1,167
Quartet Police & Crime Commissioner	-	5,000	(5,000)	-	-
Quartet Well-being Workshops	4,488	-	(4,488)	-	-
St Stephens & St James	-	5,000	(1,200)	-	3,800
	<u>10,021</u>	<u>101,800</u>	<u>(33,917)</u>	<u>50</u>	<u>77,954</u>
Total funds	<u>55,322</u>	<u>203,416</u>	<u>(136,262)</u>	<u>-</u>	<u>122,476</u>

BELOVED**NOTES TO THE FINANCIAL STATEMENTS****YEAR ENDED 31 MARCH 2025**

11 Analysis of net assets between funds

	Restricted Funds £	Unrestricted General Funds £	Total £
As at 31 March 2025			
Other net assets	61,491	261,795	323,286
	<u>61,491</u>	<u>261,795</u>	<u>323,286</u>
	Restricted Funds £	Unrestricted General Funds £	Total £
As at 31 March 2024 - Restated			
Other net assets	77,954	44,522	122,476
	<u>77,954</u>	<u>44,522</u>	<u>122,476</u>

12 Related party transactions

There are no transactions with trustees or other related parties other than those disclosed as required by the SORP elsewhere in the financial statements.

13 Prior year restatements

The accounts have been prepared on the accruals basis for the current financial year and prior year accounts were prepared on the receipts and payments basis. Therefore, the prior year figures have been restated for comparative purposes.