

# Annual Report of Meole Brace Peace Memorial Hall Charity Reg no. 1170090 January 1<sup>st</sup> to December 31<sup>st</sup> 2023



**Address:** Meole Brace Peace Memorial Hall, Upper Rd, Shrewsbury SY3 9JP

**Trustees:** Peter Dunhill (Chair), Jane Williams (Treasurer), Andrew Hulme (Website/Facebook), Anne Davies, Helen Smart, Heather Macleod (from March), Lucy Walton (March to December)

**Management Meeting Attenders:** Ruth Jones (Nobold WI Rep up to July), Clive Goodwin (Meole Brace Garden and Allotment Association Rep)

**Contact for bookings:** Peter Dunhill 01743 246574, email

[meolepeacehall@gmail.com](mailto:meolepeacehall@gmail.com)

**Banking:** Nat West, Telford Town Centre, Telford

**Insurance cover:** Village Guard (Allied Westminster) – Property Damage, Employers Liability, Public Liability, Legal Expenses, Trustee Indemnity

**Local authority areas:** Shropshire Council and Shrewsbury Town Council

**Facebook page:** <https://en-gb.facebook.com/pg/Meole-Brace-Peace-Memorial-Hall-538869346237711/about/>

**Website:** <https://sites.google.com/site/meolebracememorialhall/home>

## Our facilities

The main hall (12.5 x 6m + Stage: 4.8 x 6m) is equipped for a variety of uses including meetings, slide/powerpoint shows, dance, drama, parties, lunches and indoor recreation

- Stage with lighting and curtains.
- Side dressing/green room
- Plenty of stackable tables and chairs.
- Maximum Capacity: 100 people standing, 90 seated
- Wide door and wheel chair access
- Heating

An entrance lobby

A meeting room (4 x 5.7m) that is suitable for committee meetings or refreshments - a partition wall can be opened onto the side of the main hall,

A fitted kitchen with

- Hot water boiler and kettles for drinks
- Fridge
- Electric Cooker
- Microwave

Toilets (male, female, accessible for people with disabilities) and cloakroom area

Plenty of storage space

Off road parking for 7 vehicles + on road parking – we are located in a built up area

## Chairman's Foreword

November 26<sup>th</sup> 2023 saw a first for me. I found myself fully dressed for my role as Father Christmas asking children to identify pictures of Santa's reindeer by name and giving out small gifts with an appropriate ho ho! Persuading me to do this was just one of the achievements of the Frost Fayre steering group (Jane Williams, Helen Smart and Heather Macleod) who raised a magnificent £663 towards the refurbishment of the Hall. The same group had also organised a successful Ceilidh earlier on in the year.

The major project to reinvigorate the Hall took a number of significant steps forward in 2023. Architect Steve Hayward translated his initial design into a detailed pack which secured Building Regulation approval and then Planning Permission. This pack also enabled Quantity Surveyor Paul Majski to offer, free of charge and we thank him for that, an estimate of £465,000 for the overall works.

Despite all the refurbishment plans in place we need to keep the Hall usable but want to avoid spending any more than is necessary in doing so. However during the course of the year there have been some unavoidable repairs and replacements. These have included replacing two toilets and repairing two of our gas heaters.



Defibrillator training



Father Christmas at the Frost Fayre

We are indebted to Dave Crockford, a local plumber and gas engineer who did the work on the toilets at a very competitive and generous rate.

We carried out a 'deep clean' in February with the aid of seven volunteers. It was hard work and for the most part satisfying though flaking plasterwork was a tribulation. Sarah Adams our cleaner went the 'extra mile' by washing all the curtains. These have now been recoated with fire retardant.

We are delighted to have formed a close relationship with the recently formed Meole Village Community Association. We were able to respond positively to a request to host a defibrillator though it is uncertain whether the Hall will be the chosen venue. We will be giving time and space for training local people in its use.

So it has been a busy and fruitful year and I must thank all those who have helped keep the much loved Peace Memorial Hall open and fit for purpose.

Peter Dunhill



## History

Meole Brace Peace Memorial Hall was the product of many years' work by a committee formed to try to create a Peace Memorial in memory of the sacrifices made by local people during the First World War.

Early Committee minutes from 1920 record the failure to raise sufficient funds a very ambitious proposal –spare cash for donations was short at the time

The plan was then changed to building a hall on a piece of land opposite The Sycamores (now known as Millford Lodge) to be donated by the Bather family - Lords of the Manor for many years who had provided the vicars of Meole Brace almost continuously between 1778 and 1931. On the back of this donation it was not long before £180 had been raised.

The committee agreed to purchase a hall built of concrete from a Mr Edwards at a cost of £650. It would contain a room 60ft x 20ft wide, a 20ft x 20ft square club room adjoining, a kitchen equipped with a boiler, and ladies' and gentlemen's cloakrooms with lavatory accommodation.



Bell ringers in Meole Brace c 1920

The building was soon erected and an opening concert arranged for Thursday

October 20<sup>th</sup> 1921 followed by a whist drive and dance on Friday 21<sup>st</sup> October. Invitations were sent out to all householders and ex-servicemen who had lived in the area.

There was a dispute with Mr Edwards about a significant disparity between the original estimate and the final cost. Eventually the matter was resolved amicably through negotiation.

The list of committee members over the years includes the surnames of many well known Meole Brace families: Aris, Ashton, Bather, Burd, Chambers, Cox, Edwards, Evans, Griffiths, Harris, Jones, Massie, Purslow and Tanner

This is an A-Z of just some of the groups and functions that the Hall has hosted over the years:

Alexandra Players - Art Classes - Arts Alive - Auction Sales - Boy Scouts - Bridge Club - Child Welfare Clinic - Choirs - Coronation parties for children - Dancing Classes - Gardening Club - General and Local Elections - Girl Guides - Jazz Band - Martial Arts - Men's Institute - Play Groups - Rummage Sales - Salinka Stars - The Women's Institute - Whist Drives

In 2002 many of the Hall Trustees had lost heart and it seemed as though the Hall might close. Even though there were plenty of bookings this was not matched by any enthusiasm to contribute to the running of the Hall. However a public meeting resulted in the election of a new committee and a great number of improvements were made especially to the entrance and cloakroom areas which had a new concrete floor and also to the heating system.

## Hall usage

### Regular Users during 2023

*Meole Brace Garden & Allotment Club –*

Club talks and Committee meetings

*Nobold Womens Institute* –11 evening meetings a year

*Salinka Stars* (young and teenage dance troupe) –4.00-9.00 pm every Thursday

*Puddles Playgroup* –one morning (Friday) every week

*Art Group* –Monday mornings

*Keep Fit* – Friday afternoons

*Puppy Clases* –Saturdays/Sundays

*Yoga* – Wednesday mornings/Friday evenings

*Pilates* – Thursday mornings

*Dance classes* – Tuesdays and Thursdays

*Tai Chi* – Tuesday evenings

*Ballroom dancing practice* – Thursday evenings

*Drumming Workshop* – Sunday afternoons



Meole Brace Garden and Allotment Club Annual Show was reinstated in 2023



Carol singers at the Frost Fayre

### Occasional Users

The hall is used as a *polling station* for local and general elections

*Severn Hospice* events

*Childrens Parties*

*Frost Fayre* (Hall fundraiser)

*Ceilidh* (Hall fundraiser)

*Play rehearsals and performances* - Big Dickie Whittington, Jack and the Beanstalk

*Tap dancing classes*

*Creative dance sessions*

### Booking rates in 2023

Groups: £9 per hour, £27 for half day /evening session

Parties, events depending on time: £35 - £60



Ceilidh dancing in the Hall

## Maintenance + Cleaning

Over the course of the year repairs and maintenance work have been undertaken on the toilets and drains, the emergency exits, the heating and the kitchen. Peter Williams (husband of our Treasurer Jane Williams) has made a particularly active contribution this year in sorting out the electrical issues following the five yearly electrical inspection, and cleaning out the gutter between the two pitched roofs. Rumour has it that the Chairman occasionally turns his hand to miscellaneous repairs. We have also had some failing plasterwork properly patched up thanks to the Paz – partner of Trustee, Helen Smart

Sarah Adams took over the cleaning from Lorna who stood down in December 2022. The job time was extended to two hours a week. Dawn and then Gloria took on one of those hours each week but Sarah finished the year in sole charge and has been thorough, cheery and conscientious

## Inspections

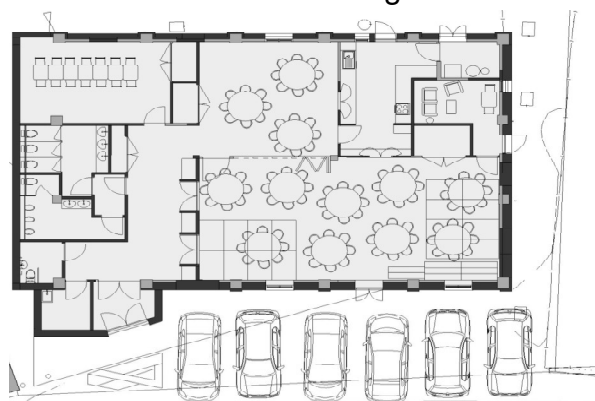
The Hall has complied with the legal requirement to have annual (electrical) Portable Appliance Tests and a commercial Gas Installation Examination. The Gas Examination revealed faults with two of our three gas heaters. These were repaired at some cost and were ready by September when the weather started to get colder. In addition the fire extinguisher inspection by Oakleys took place in July.



Our Planning Permission notice

## Plans for Hall improvements

During the year we focussed our attention on our major refurbishment project. Our architect Steve Hayward's design has ensured the structural stability of the building, improved energy efficiency and comfort and in general created a modern and welcoming ambience while retaining the traditional feel of a village hall.



He completed the 'technical design' stage where the general concept of the refurbishment was translated into a scheme that was approved by the Council's Building Regulations Department. A survey revealed that the Hall had no foundations to speak of and extra reinforcement for the proposed porch was required. Planning Permission was applied for and granted. Paul Majski a local Quantity Surveyor who volunteered his time for free offered an estimate of £465,000 including VAT. This will be a significant fund raising challenge.



## Summary of Annual Accounts

Receipts	2023	2022
	£	£
Hire of Hall	10104	8632
Donations	42	10
Interest	299	53
Fundraising	1350	1137
Electricity meter	12	28
Grants/other	0	2667
<b>Total income</b>	<b>11808</b>	<b>12527</b>
Current account b/f	12223	13505
Reserve account b/f	25638	22585
<b>Total brought forward</b>	<b>37861</b>	<b>36090</b>
Cash in hand b/f	2	105
Stock held	45	118
<b>Overall total</b>		<b>48840</b>

Payments	2023	2022
	£	£
Electricity	1240	564
Gas	2209	1273
Water	377	327
Insurance	800	813
Licences/Subs	109	198
Maintenance/Repairs	2740	1118
Renovation costs	12185	5286
Cleaning	1216	709
Fundraising costs	689	123
Consumables	358	163
Printing/Banners	173	243
<b>Total expenditure</b>	<b>22095</b>	<b>10816</b>
Current account c/f	5716	12223
Reserve account c/f	21937	25638
<b>Total carried forward</b>	<b>27114</b>	<b>37861</b>
Cash in hand c/f	457	118
Stock held	50	46
<b>Overall total</b>	<b>49715</b>	<b>48840</b>

This summary is purely indicative. The full inspected accounts are available on request.



The Ceilidh Band in full swing



Salinka Stars are long term regular users of the Hall. We wish them luck in all their activities and competitions





## The Meole Brace Peace Memorial Hall

(Registered Charity Ref 1170090)

### Financial Statement for the Period 1 January 2023 to 31 December 2023

<b>Receipts</b>	<b>2023</b>	<b>2022</b>	<b>Payments</b>	<b>2023</b>	<b>2022</b>
Hire of hall receipts	10,104	8,634	Electricity	1,240	564
Donations received	42	10	Gas	2,209	1,273
Interest received	299	53	Water	377	354
Fundraising proceeds	1,350	1,138	Insurance	800	813
Electricity Meter	12	28	Licences/Subscriptions	109	198
Grants/Other	-	2,670	Maintenance and Repairs	2,740	1,118
			Renovation Costs	12,185	5,286
			Cleaning	1,216	709
			Fundraising costs	689	123
			Goods & Consumables	358	163
			Admin Costs/Printing	173	251
			Expenditure from Grants		
<b>Total Receipts</b>	<b>11,808</b>	<b>12,533</b>	<b>Total Payments</b>	<b>22,095</b>	<b>10,852</b>
<b>Bank Balances brought fwd</b>			<b>Bank Balances carried fwd</b>		
Current Account	12,223	13,505	Current Account closing	5,176	12,223
Reserve Accounts	25,638	22,585	Reserve Accounts closing	21,937	25,638
<b>Bank totals brought fwd</b>	<b>37,861</b>	<b>36,090</b>	<b>Bank totals carried fwd</b>	<b>27,114</b>	<b>37,861</b>
Cash in hand brought fwd	2	19	Cash in hand carried fwd	457	2
Stock held	45	118	Stock held	50	45
<b>Grand Totals</b>	<b>49,715</b>	<b>48,760</b>	<b>Grand Totals</b>	<b>49,715</b>	<b>48,760</b>

#### Notes

0

Hall hire income increased this year, total £10,104

Fundraising - Ceilidh held 10th June which made small surplus. Frost Fayre proceeds totalled £755 and costs £92.50 Overall profit £663, increase or

Renovation costs include payments of £10,500 to Form Form Architects (£4.8k for full design stage), and £1050 to PB Structural Design

Due to extensive renovation costs, transferred £4,000 from the Reserve account during October

Cleaning costs increased this year as we are doubling up on hours, 1 hr per week given how busy the hall is was deemed not enough, we are very pleased with the standard of the cleaning. Need to remind hall hirers of their commitments to ensuring floors are swept and rubbish is removed etc ready for the next group(s) coming in.