

THE MEOLE BRACE PEACE MEMORIAL HALL

England & Wales · Charity number 1170090

Details

Status Registered

Legal form CIO

Registered 2016-11-09

Register [View on the Charity Commission register](#)

Contact

Address Teraly
Vicarage Road
Shrewsbury
SY3 9EX

Phone 07868701702

Website <https://sites.google.com/site/meolebracememorialhall/home>

Activities

Objects: THE OBJECTS OF THE CIO ARE THE PROVISION AND MAINTENANCE OF A VILLAGE HALL FOR THE USE OF THE INHABITANTS OF MEOLE BRACE IN THE UNITARY AUTHORITY OF SHROPSHIRE AND SURROUNDING AREA WITHOUT DISTINCTION OF POLITICAL, RELIGIOUS OR OTHER OPINIONS, INCLUDING USE FOR: A) MEETINGS, LECTURES AND CLASSES, AND B) OTHER FORMS OF RECREATION AND LEISURE-TIME OCCUPATION, WITH THE OBJECT OF IMPROVING THE CONDITIONS OF LIFE FOR THE INHABITANTS.

Activities: PROVIDES A LOCAL COMMUNITY SPACE TO CHILDREN AND ADULTS FOR SOCIAL AND EDUCATIONAL USE. HALL REPRESENTS A MEMORIAL TO THOSE LOCAL PEOPLE WHO FOUGHT AND DIED IN THE GREAT WAR

Classification

- **How:** Provides Buildings/facilities/open Space
- **What:** Recreation
- **Who:** The General Public/mankind

Geography

- Shropshire

Finances

Period end	Income	Expenditure	Assets	Employees
2024-12-31	£12,856	£11,457	-	-
2023-12-31	£11,808	£22,095	-	-
2022-12-31	£12,533	£10,852	-	-
2021-12-31	£21,309	£6,479	-	-
2020-12-31	£15,526	£7,134	-	-

Trustees

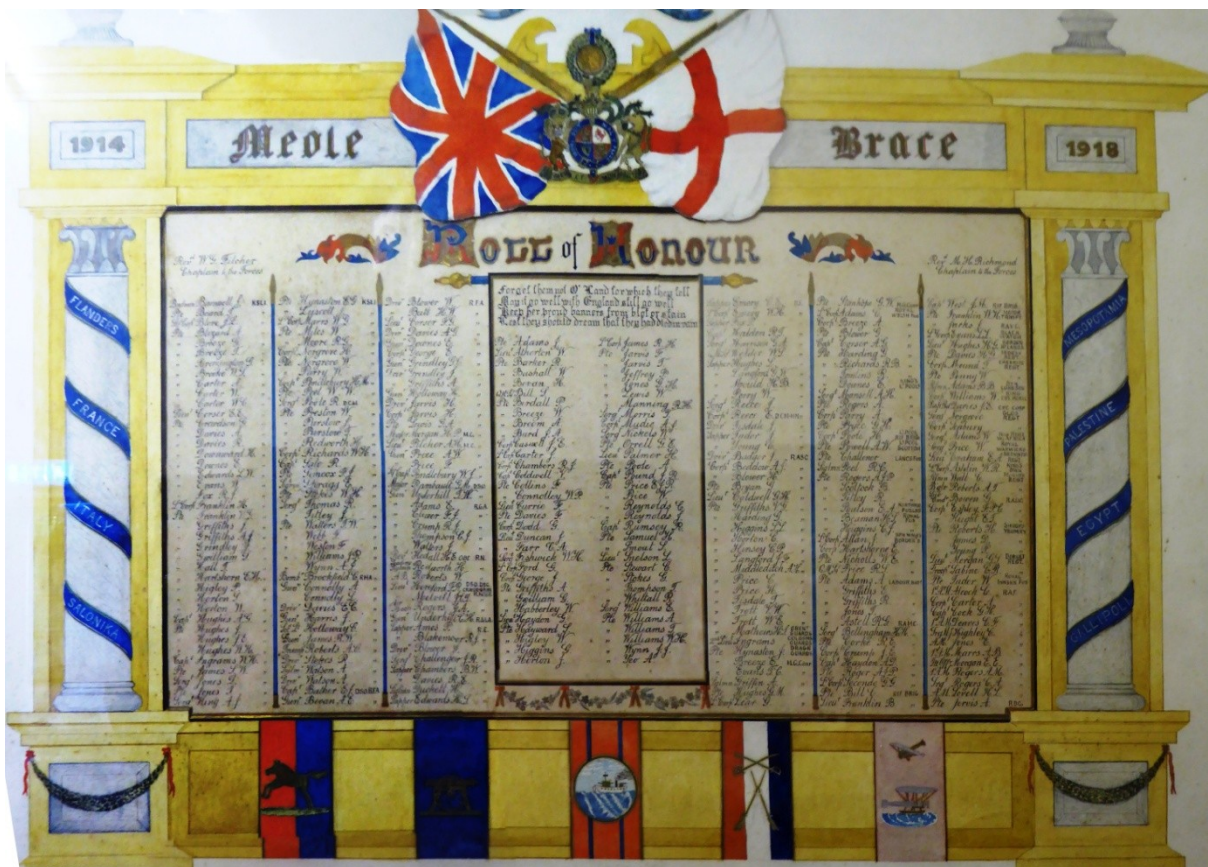
Name	Role	Appointed
ANDREW JAMES HULME		2016-11-01
Heather MacLeod		2023-01-16
JANE CAROLINE WILLIAMS		2016-11-01
Joan Karen Stringer		2005-05-06
PETER ARNOLD DUNHILL		2016-11-01

THE MEOLE BRACE PEACE MEMORIAL HALL

England & Wales - Charity number 1170090

Accounts

Annual Report of Meole Brace Peace Memorial Hall Charity Reg no. 1170090 January 1st to December 31st 2024



Address: Meole Brace Peace Memorial Hall, Upper Rd, Shrewsbury SY3 9JP

Trustees: Peter Dunhill (Chair), Jane Williams (Treasurer), Andrew Hulme (Website/Facebook), Helen Smart, Heather Macleod

Management Meeting Attenders/Minutes Receivers: Ruth Jones (Nobold WI Rep), Clive Goodwin (Meole Brace Garden and Allotment Club Rep)

Contact for bookings: Peter Dunhill 07392 571053, email meolepeacehall@gmail.com

Banking: Nat West, Telford Town Centre, Telford

Insurance cover: Village Guard (Allied Westminster) – Property Damage, Employers Liability, Public Liability, Legal Expenses, Trustee Indemnity

Local authority areas: Shropshire Council and Shrewsbury Town Council

Facebook page: <https://en-gb.facebook.com/pg/Meole-Brace-Peace-Memorial-Hall-538869346237711/about/>

Website: <https://sites.google.com/site/meolebracememorialhall/home>

Our facilities

The main hall (12.5 x 6m + Stage: 4.8 x 6m) is equipped for a variety of uses including meetings, slide/powerpoint shows, dance, drama, parties, lunches and indoor recreation

- Stage with lighting and curtains.
- Side dressing/green room
- Plenty of stackable tables and chairs.
- Maximum Capacity: 100 people standing, 90 seated
- Wide door and wheel chair access
- Heating

An entrance lobby

A meeting room (4 x 5.7m) that is suitable for committee meetings or refreshments - a semi sound proof partition wall can be opened onto the side of the main hall,

A fitted kitchen with

- Hot water boiler and kettles for drinks
- Fridge
- Electric Cooker
- Microwave

Toilets (male, female, accessible for people with disabilities) and cloakroom area

Plenty of storage space

Off road parking for 8 vehicles + on road parking – we are located in a built up area

Chairman's Report

This year has been largely shaped by our forward planning around the future of the Hall. The initial proposal to refurbish the current building—costing over £460,000—was ultimately deemed unfeasible. In response, the Trustees began exploring alternative options, including a complete rebuild. A key advantage of a new build is that it would not incur VAT, offering a more financially viable path.

A local survey, conducted by our Town and Shropshire Councillor, gathered some insight—albeit with a low response rate and limited contextual explanation. It showed a narrow majority in favour of constructing a new Hall on land at the lower end of the football ground on Church Road. The alternative options considered were rebuilding on the current site or relocating to Mary Webb Road. Any future developments will now depend on whether the Town Council supports this potential relocation. Importantly, the sale of the current site could help offset the cost of a new facility.



The recently launched Meole Matters magazine, now delivered quarterly to every household in the parish, has played a crucial role in keeping our community informed about these developments and the options we're exploring.

Meanwhile, maintaining the existing Hall has continued to be a significant undertaking. Regular inspections, ongoing repairs, replacements, and redecoration have all required attention. You'll find further details on these activities later in this report.

Our standout event of the year was once again the *Frost Fayre* in late November. Huge thanks go to Jane Williams and her team for organising a wonderful event featuring over twenty stallholders, festive music, crafts, games, and an unbeatable community spirit. We were also delighted to raise £776 (after expenses) in support of the Hall and its ongoing work.



We were thrilled to welcome Father Christmas himself, who kindly opened the Frost Fayre

In addition, the Hall played a key role in the Meole Garden Trail in June, serving cream teas to an enthusiastic turnout on a gloriously sunny day—so popular, in fact, we were nearly overwhelmed! We also hosted two Local History Walks, which raised nearly £200 in donations.

In January we learnt with great sadness that Anne Davies, sister of former chairman Bob Mills, had died. Anne worked quietly but tirelessly behind the scenes for many years, keeping the Hall stocked and in good order. In recent times, as her health declined, her absence made it even more apparent how much she contributed. The term “stalwart” is

often used to describe devoted volunteers, and in Anne's case, it was truly fitting.

Lastly, we bid a frugal farewell to our Green Bin—formerly used for leaves, moss, strimmer cuttings, and small

History

Meole Brace Peace Memorial Hall was the product of many years' work by a committee formed to try to create a Peace Memorial in memory of the sacrifices made by local people during the First World War.

Early Committee minutes from 1920 record the failure to raise sufficient funds a very ambitious proposal – spare cash for donations was short at the time

The plan was then changed to building a hall on a piece of land opposite The Sycamores (now known as Millford Lodge) to be donated by the Bather family - Lords of the Manor for many years who had provided the vicars of Meole Brace almost continuously between 1778 and 1931. On the back of this donation it was not long before £180 had been raised.

The committee agreed to purchase a hall built of concrete from a Mr Edwards at a cost of £650. It would contain a room 60ft x 20ft wide, a 20ft x 20ft square club room adjoining, a kitchen equipped with a boiler, and ladies' and gentlemen's cloakrooms with lavatory accommodation.

sticks. Thanks to a bit of elbow grease and some creative thinking, a new compost bin was constructed near the back door—a simple, sustainable solution we can all be proud of.

Peter Dunhill



Bell ringers in Meole Brace c 1920

The building was soon erected and an opening concert arranged for Thursday October 20th 1921 followed by a whist drive and dance on Friday 21st October. Invitations were sent out to all householders and ex-servicemen who had lived in the area.

There was a dispute with Mr Edwards about a significant disparity between the original estimate and the final cost. Eventually the matter was resolved amicably through negotiation.

The list of committee members over the years includes the surnames of many well known Meole Brace families: Aris, Ashton, Bather, Burd, Chambers, Cox, Edwards, Evans, Griffiths, Harris, Jones, Massie, Purslow and Tanner

This is an A-Z of just some of the groups and functions that the Hall has hosted over the years:

Alexandra Players - Art Classes - Arts Alive - Auction Sales - Boy Scouts -

Bridge Club - Child Welfare Clinic -
Choirs - Coronation parties for children
- Dancing Classes - Gardening Club -
General and Local Elections - Girl
Guides - Jazz Band - Martial Arts -
Men's Institute - Play Groups -
Rummage Sales - Salinka Stars - The
Women's Institute - Whist Drives

In 2002 many of the Hall Trustees had lost heart and it seemed as though the Hall might close. Even though there were plenty of bookings this was not matched by any enthusiasm to contribute to the running of the Hall. However a public meeting resulted in the election of a new committee and a great number of improvements were made especially to the entrance and cloakroom areas which had a new concrete floor and also to the heating system.

Hall usage

Regular Users during 2024

Meole Brace Garden & Allotment Club

–Club talks and Committee meetings

Nobold Womens Institute –11 evening meetings a year

Salinka Stars (young and teenage dance troupe) –4.00-9.00 pm every Thursday

Puddles Playgroup –one morning (Friday) every week

Art Group –Monday mornings

Keep Fit and Fitness classes– Thursday evenings, Friday afternoons, Saturday early morning

Pilates – Thursday mornings

Dance classes – Tuesdays and Thursdays

Tai Chi – Tuesday evenings and Wednesday afternoons

Ballroom dancing practice – Thursday evenings

Drumming Workshop – Sunday afternoons

Meole Village Community Group – monthly meetings free of charge



Meole Brace Garden and Allotment Club Annual Show



Festive singers at the Frost Fayre

Occasional Users

The hall is used as a *polling station* for local and general elections

Childrens Parties

Frost Fayre (Hall fundraiser)

Ceilidhs

Play and Band rehearsals and performances

Singing and Dance grades

Home Educators

*Shropshire Archaeological Association
Friends of Palestine
Tea and Cakes for local events eg
Garden Trail*

Booking rates in 2024

Groups: £9 per hour, £27 for half day /evening session

Parties, events depending on time:
£35 - £60



Refreshments for local events

Maintenance + Cleaning

We undertook a significant and much needed programme of redecoration during the quieter summer months. This involved a lot of re-plastering, replacing wood panelling, re-tiling and, of course, up grading the paint work. We were lucky to attract a very competitive quote from a local painter and decorator who was happy to work with volunteers. The outcome has put the Hall in the 'acceptable' category in terms of its overall look.



Before the redecoration - a plaster fall

The plan is to turn our attention to the exterior of the building in 2025 when we hope to employ the same decorator that did the inside.

Over the course of the year repairs and maintenance work have been undertaken on the toilets and drains, the emergency exits, the main door, the water heater, the hall floor and the kitchen. Peter Williams (husband of our Treasurer Jane Williams) has made a particularly active contribution this year in sorting out electrical issues and cleaning out the gutter between the two pitched roofs.

Sarah Adams, our dedicated and flexible cleaner, has used her two hours a week very efficiently and has been thorough, cheery and conscientious. We replaced to useless old vacuum cleaner with an equally cheery 'Henry' secured at a useful discount by Trustee Helen Smart.

Inspections

The Hall has complied with the legal requirement to have annual (electrical) Portable Appliance Tests and a commercial Gas Installation Examination. The Gas Examination revealed a slight

pipe width deficiency with our newly replaced water heater. This was rectified at minimum cost and was all sorted by September when the weather started to get colder. In addition the fire extinguisher inspection by Oakleys took place in July.

Plans for Hall a potential new Hall

Any new Hall will need to improve the use of space, energy efficiency and comfort and in general create a modern and welcoming ambience while retaining the traditional feel of a village hall.

We commissioned an architectural technician to develop a design based

on standardised, and therefore economical, components to help give the local community an idea of what a future new build Hall might look like.



What a potential rebuild using standard components might look like

There is a possibility that we could work with the SAHA football Club to incorporate new changing rooms but will resist any initiatives to include a social club and bar which would incur significant local opposition.

Summary of Annual Accounts

Receipts	2024	2023
	£	£
Hire of Hall	10551	10104
Donations	50	42
Interest	325	299
Fundraising	1328	1350
Electricity meter	95	12
Grants/other	507	0
Total income	12856	11808
Current account b/f	5176	12223
Reserve account b/f	21937	25638
Total brought forward	27114	37861
Cash in hand b/f	457	2
Stock held	50	45
Overall total	40477	49715

Payments	2024	2023
	£	£
Electricity	884	1240
Gas	2376	2209
Water	621	377
Insurance	825	800
Licences/Subs	155	109
Maintenance/Repairs	4352	2740
Renovation costs	275	12185
Cleaning	1196	1216
Fundraising costs	172	689
Consumables	387	358
Printing/Banners	215	173
Total expenditure	11457	22095
Current account c/f	4041	5716
Reserve account c/f	2462	21937
Total carried forward	28803	27114
Cash in hand c/f	217	457
Stock held	0	50

<i>Overall total</i>	40477	49715
----------------------	--------------	--------------

This summary is purely indicative. The full inspected accounts are available on request.



The Ceilidh Band in full swing



A recruitment poster for Salinka Stars. The top half features a large photograph of the dance team performing on a gymnasium floor. Overlaid on this is a large yellow star with the words "SALINKA" and "STARS" in a stylized font. Below the main image are three circular inset photos: one showing a group of dancers, one showing a group of dancers in purple and white, and one showing a dancer holding a trophy. The bottom half of the poster has a yellow background with black text.

DO YOU LIKE TO
Dance?

Come join  and have fun, make friends,
keep active, win trophies.

New & experienced dancers welcome.
Weekly training will be given, Wednesday's from 16:45
Competitions twice a month.

Salinka Stars are long term regular users of the Hall. We wish them luck in all their activities and competitions



The Meole Brace Peace Memorial Hall

(Registered Charity Ref 1170090)

Financial Statement for the Period 1 January 2024 to 31 December 2024

<i>Receipts</i>	2024	2023	<i>Payments</i>	2024	2023
Hire of hall receipts	10,551	10,104	Electricity	884	1,240
Donations received	50	42	Gas	2,376	2,209
Interest received	325	299	Water	621	377
Fundraising proceeds	1,328	1,350	Insurance	825	800
Electricity Meter	95	12	Licences/Subscriptions	155	109
Grants/Other	507	-	Maintenance and Repairs	4,352	2,740
			Renovation Costs	275	12,185
			Cleaning	1,196	1,216
			Fundraising costs	172	689
			Goods & Consumables	387	358
			Admin Costs/Printing	215	173
			Expenditure from Grants		
Total Receipts	12,856	11,808	Total Payments	11,457	22,095
Bank Balances brought fwd			Bank Balances carried fwd		
Current Account	5,176	12,223	Current Account closing	4,041	5,176
Reserve Accounts	21,937	25,638	Reserve Accounts closing	24,762	21,937
Bank totals brought fwd	27,114	37,861	Bank totals carried fwd	28,803	27,114
Cash in hand brought fwd	457	2	Cash in hand carried fwd	217	457
Stock held	50	45	Stock held	-	50
Grand Totals	40,477	49,715	Grand Totals	40,477	49,715

Notes

Hall hire income increased by £499 this year, total £10,603. The hall was temporarily closed for around 3 weeks for extensive re-painting, otherwise income would have been higher

Fundraising update - Frost Fayre proceeds exceeded previous years raising £947 less £172 costs making an overall profit £776

Garden Trail refreshments also made £224 contribution

Grants received: Shrewsbury Town Council £500 one off

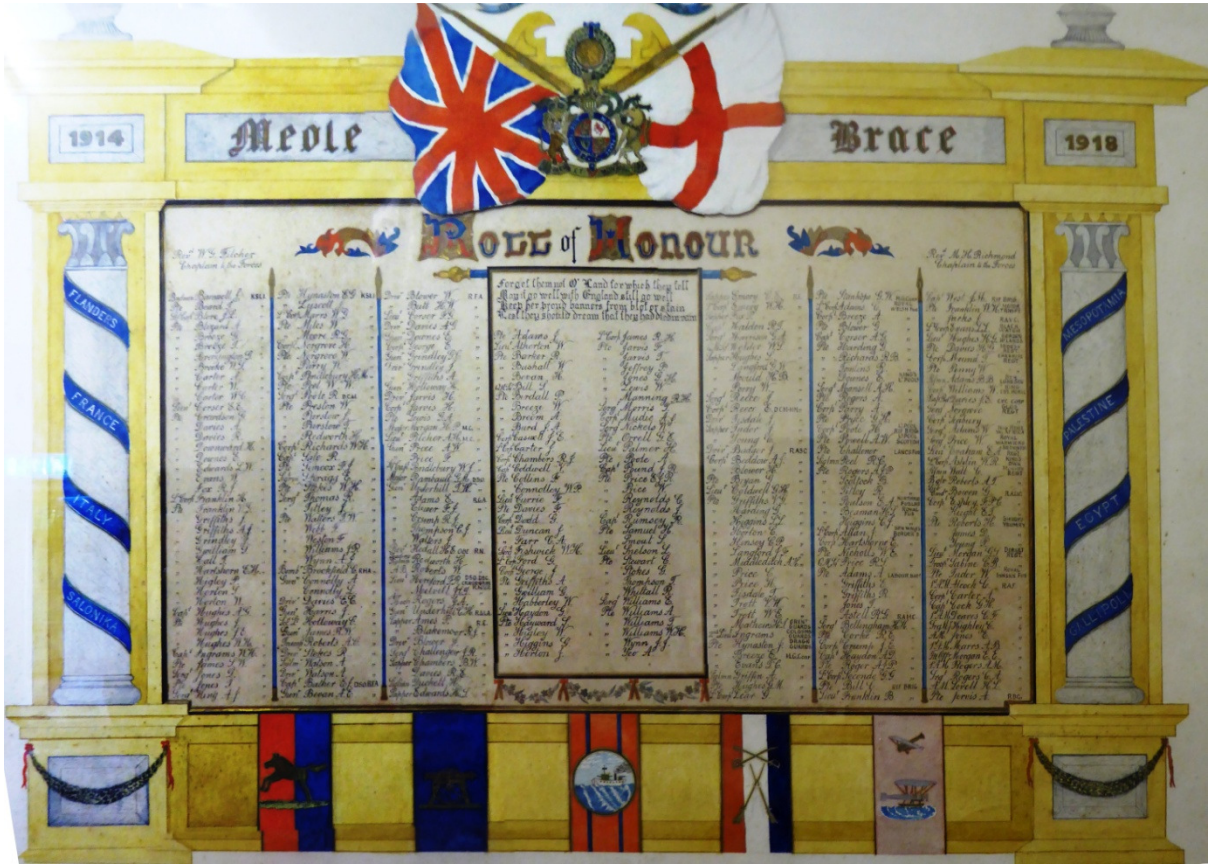
Maintenance: £2,800 spent on internal and some external re-plastering and painting of walls, ceilings and wood. £1,266 spent on new water boiler as broken and other heating/gas equipment repairs

THE MEOLE BRACE PEACE MEMORIAL HALL

England & Wales - Charity number 1170090

Accounts

**Annual Report of Meole Brace Peace Memorial
Hall Charity Reg no. 1170090
January 1st to December 31st 2023**



Address: Meole Brace Peace Memorial Hall, Upper Rd, Shrewsbury SY3 9JP

Trustees: Peter Dunhill (Chair), Jane Williams (Treasurer), Andrew Hulme (Website/Facebook), Anne Davies, Helen Smart, Heather Macleod (from March), Lucy Walton (March to December)

Management Meeting Attenders: Ruth Jones (Nobold WI Rep up to July), Clive Goodwin (Meole Brace Garden and Allotment Association Rep)

Contact for bookings: Peter Dunhill 01743 246574, email meolepeacehall@gmail.com

Banking: Nat West, Telford Town Centre, Telford

Insurance cover: Village Guard (Allied Westminster) – Property Damage, Employers Liability, Public Liability, Legal Expenses, Trustee Indemnity

Local authority areas: Shropshire Council and Shrewsbury Town Council

Facebook page: <https://en-gb.facebook.com/pg/Meole-Brace-Peace-Memorial-Hall-538869346237711/about/>

Website: <https://sites.google.com/site/meolebracememorialhall/home>

Our facilities

The main hall (12.5 x 6m + Stage: 4.8 x 6m) is equipped for a variety of uses including meetings, slide/powerpoint shows, dance, drama, parties, lunches and indoor recreation

- Stage with lighting and curtains.
- Side dressing/green room
- Plenty of stackable tables and chairs.
- Maximum Capacity: 100 people standing, 90 seated
- Wide door and wheel chair access
- Heating

An entrance lobby

A meeting room (4 x 5.7m) that is suitable for committee meetings or refreshments - a partition wall can be opened onto the side of the main hall,

A fitted kitchen with

- Hot water boiler and kettles for drinks
- Fridge
- Electric Cooker
- Microwave

Toilets (male, female, accessible for people with disabilities) and cloakroom area

Plenty of storage space

Off road parking for 7 vehicles + on road parking – we are located in a built up area

Chairman's Foreword

November 26th 2023 saw a first for me. I found myself fully dressed for my role as Father Christmas asking children to identify pictures of Santas's reindeer by name and giving out small gifts with an appropriate ho ho! Persuading me to do this was just one of the achievements of the Frost Fayre steering group (Jane Williams, Helen Smart and Heather Macleod) who raised a magnificent £663 towards the refurbishment of the Hall. The same group had also organised a successful Ceilidh earlier on in the year.

The major project to reinvigorate the Hall took a number of significant steps forward in 2023. Architect Steve Hayward translated his initial design into a detailed pack which secured Building Regulation approval and then Planning Permission. This pack also enabled Quantity Surveyor Paul Majski to offer, free of charge and we thank him for that, an estimate of £465,000 for the overall works.

Despite all the refurbishment plans in place we need to keep the Hall usable but want to avoid spending any more than is necessary in doing so. However during the course of the year there have been some unavoidable repairs and replacements. These have included replacing two toilets and repairing two of our gas heaters.



Defibrillator training



Father Christmas at the Frost Fayre

We are indebted to Dave Crockford, a local plumber and gas engineer who did the work on the toilets at a very competitive and generous rate.

We carried out a 'deep clean' in February with the aid of seven volunteers. It was hard work and for the most part satisfying though flaking plasterwork was a tribulation. Sarah Adams our cleaner went the 'extra mile' by washing all the curtains. These have now been recoated with fire retardant.

We are delighted to have formed a close relationship with the recently formed Meole Village Community Association. We were able to respond positively to a request to host a defibrillator though it is uncertain whether the Hall will be the chosen venue. We will be giving time and space for training local people in its use.

So it has been a busy and fruitful year and I must thank all those who have helped keep the much loved Peace Memorial Hall open and fit for purpose.

Peter Dunhill

History

Meole Brace Peace Memorial Hall was the product of many years' work by a committee formed to try to create a Peace Memorial in memory of the sacrifices made by local people during the First World War.

Early Committee minutes from 1920 record the failure to raise sufficient funds a very ambitious proposal –spare cash for donations was short at the time

The plan was then changed to building a hall on a piece of land opposite The Sycamores (now known as Millford Lodge) to be donated by the Bather family - Lords of the Manor for many years who had provided the vicars of Meole Brace almost continuously between 1778 and 1931. On the back of this donation it was not long before £180 had been raised.

The committee agreed to purchase a hall built of concrete from a Mr Edwards at a cost of £650. It would contain a room 60ft x 20ft wide, a 20ft x 20ft square club room adjoining, a kitchen equipped with a boiler, and ladies' and gentlemen's cloakrooms with lavatory accommodation.



Bell ringers in Meole Brace c 1920

The building was soon erected and an opening concert arranged for Thursday

October 20th 1921 followed by a whist drive and dance on Friday 21st October. Invitations were sent out to all householders and ex-servicemen who had lived in the area.

There was a dispute with Mr Edwards about a significant disparity between the original estimate and the final cost. Eventually the matter was resolved amicably through negotiation.

The list of committee members over the years includes the surnames of many well known Meole Brace families: Aris, Ashton, Bather, Burd, Chambers, Cox, Edwards, Evans, Griffiths, Harris, Jones, Massie, Purslow and Tanner

This is an A-Z of just some of the groups and functions that the Hall has hosted over the years:

Alexandra Players - Art Classes - Arts Alive - Auction Sales - Boy Scouts - Bridge Club - Child Welfare Clinic - Choirs - Coronation parties for children - Dancing Classes - Gardening Club - General and Local Elections - Girl Guides - Jazz Band - Martial Arts - Men's Institute - Play Groups - Rummage Sales - Salinka Stars - The Women's Institute - Whist Drives

In 2002 many of the Hall Trustees had lost heart and it seemed as though the Hall might close. Even though there were plenty of bookings this was not matched by any enthusiasm to contribute to the running of the Hall. However a public meeting resulted in the election of a new committee and a great number of improvements were made especially to the entrance and cloakroom areas which had a new concrete floor and also to the heating system.

Hall usage

Regular Users during 2023

Meole Brace Garden & Allotment Club –

Club talks and Committee meetings

Nobold Womens Institute –11 evening meetings a year

Salinka Stars (young and teenage dance troupe) –4.00-9.00 pm every Thursday

Puddles Playgroup –one morning (Friday) every week

Art Group –Monday mornings

Keep Fit – Friday afternoons

Puppy Clases –Saturdays/Sundays

Yoga – Wednesday mornings/Friday evenings

Pilates – Thursday mornings

Dance classes – Tuesdays and

Thursdays

Tai Chi – Tuesday evenings

Ballroom dancing practice – Thursday evenings

Drumming Workshop – Sunday afternoons



Carol singers at the Frost Fayre

Occasional Users

The hall is used as a *polling station* for local and general elections

Severn Hospice events

Childrens Parties

Frost Fayre (Hall fundraiser)

Ceilidh (Hall fundraiser)

Play rehearsals and performances - Big Dickie Whittington, Jack and the Beanstalk

Tap dancing classes

Creative dance sessions

Booking rates in 2023

Groups: £9 per hour, £27 for half day /evening session

Parties, events depending on time: £35 - £60



Meole Brace Garden and Allotment Club Annual Show was reinstated in 2023



Ceilidh dancing in the Hall

Maintenance + Cleaning

Over the course of the year repairs and maintenance work have been undertaken on the toilets and drains, the emergency exits, the heating and the kitchen. Peter Williams (husband of our Treasurer Jane Williams) has made a particularly active contribution this year in sorting out the electrical issues following the five yearly electrical inspection, and cleaning out the gutter between the two pitched roofs. Rumour has it that the Chairman occasionally turns his hand to miscellaneous repairs. We have also had some failing plasterwork properly patched up thanks to the Paz – partner of Trustee, Helen Smart

Sarah Adams took over the cleaning from Lorna who stood down in December 2022. The job time was extended to two hours a week. Dawn and then Gloria took on one of those hours each week but Sarah finished the year in sole charge and has been thorough, cheery and conscientious

Inspections

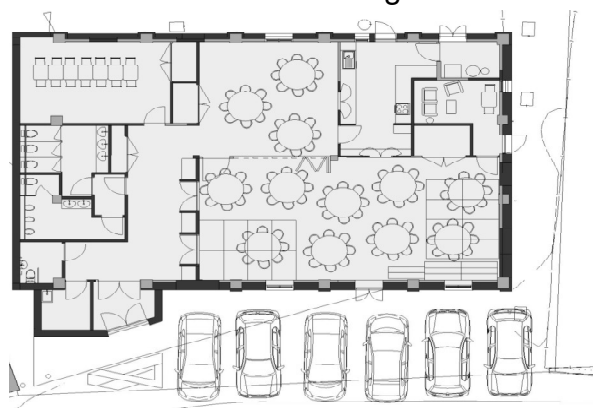
The Hall has complied with the legal requirement to have annual (electrical) Portable Appliance Tests and a commercial Gas Installation Examination. The Gas Examination revealed faults with two of our three gas heaters. These were repaired at some cost and were ready by September when the weather started to get colder. In addition the fire extinguisher inspection by Oakleys took place in July.



Our Planning Permission notice

Plans for Hall improvements

During the year we focussed our attention on our major refurbishment project. Our architect Steve Hayward's design has ensured the structural stability of the building, improved energy efficiency and comfort and in general created a modern and welcoming ambience while retaining the traditional feel of a village hall.



He completed the 'technical design' stage where the general concept of the refurbishment was translated into a scheme that was approved by the Council's Building Regulations Department. A survey revealed that the Hall had no foundations to speak of and extra reinforcement for the proposed porch was required. Planning Permission was applied for and granted. Paul Majski a local Quantity Surveyor who volunteered his time for free offered an estimate of £465,000 including VAT. This will be a significant fund raising challenge.

Summary of Annual Accounts

Receipts	2023	2022
	£	£
Hire of Hall	10104	8632
Donations	42	10
Interest	299	53
Fundraising	1350	1137
Electricity meter	12	28
Grants/other	0	2667
Total income	11808	12527
Current account b/f	12223	13505
Reserve account b/f	25638	22585
Total brought forward	37861	36090
Cash in hand b/f	2	105
Stock held	45	118
Overall total		48840

Payments	2023	2022
	£	£
Electricity	1240	564
Gas	2209	1273
Water	377	327
Insurance	800	813
Licences/Subs	109	198
Maintenance/Repairs	2740	1118
Renovation costs	12185	5286
Cleaning	1216	709
Fundraising costs	689	123
Consumables	358	163
Printing/Banners	173	243
Total expenditure	22095	10816
Current account c/f	5716	12223
Reserve account c/f	21937	25638
Total carried forward	27114	37861
Cash in hand c/f	457	118
Stock held	50	46
Overall total	49715	48840

This summary is purely indicative. The full inspected accounts are available on request.



The Ceilidh Band in full swing



A recruitment poster for Salinka Stars. The top half features a large photo of the team performing on a gymnasium floor, with a stylized star logo containing the text 'SALINKA STARS'. Below this are three circular inset photos: one showing a group of young girls in uniform, another showing a group of girls in purple and white uniforms, and a third showing a girl holding a trophy. The bottom half of the poster has a yellow background with black text.

DO YOU LIKE TO
Dance?

Come join  and have fun, make friends,
keep active, win trophies.

New & experienced dancers welcome.
Weekly training will be given, Wednesday's from 16:45
Competitions twice a month.

Salinka Stars are long term regular users of the Hall. We wish them luck in all their activities and competitions



The Meole Brace Peace Memorial Hall

(Registered Charity Ref 1170090)

Financial Statement for the Period 1 January 2023 to 31 December 2023

<i>Receipts</i>	2023	2022	<i>Payments</i>	2023	2022
Hire of hall receipts	10,104	8,634	Electricity	1,240	564
Donations received	42	10	Gas	2,209	1,273
Interest received	299	53	Water	377	354
Fundraising proceeds	1,350	1,138	Insurance	800	813
Electricity Meter	12	28	Licences/Subscriptions	109	198
Grants/Other	-	2,670	Maintenance and Repairs	2,740	1,118
			Renovation Costs	12,185	5,286
			Cleaning	1,216	709
			Fundraising costs	689	123
			Goods & Consumables	358	163
			Admin Costs/Printing	173	251
			Expenditure from Grants		
Total Receipts	11,808	12,533	Total Payments	22,095	10,852
<i>Bank Balances brought fwd</i>			<i>Bank Balances carried fwd</i>		
Current Account	12,223	13,505	Current Account closing	5,176	12,223
Reserve Accounts	25,638	22,585	Reserve Accounts closing	21,937	25,638
Bank totals brought fwd	37,861	36,090	Bank totals carried fwd	27,114	37,861
Cash in hand brought fwd	2	19	Cash in hand carried fwd	457	2
Stock held	45	118	Stock held	50	45
Grand Totals	49,715	48,760	Grand Totals	49,715	48,760

Notes

0

Hall hire income increased this year, total £10,104

Fundraising - Ceilidh held 10th June which made small surplus. Frost Fayre proceeds totalled £755 and costs £92.50 Overall profit £663, increase or

Renovation costs include payments of £10,500 to Form Form Architects (£4.8k for full design stage), and £1050 to PB Structural Design

Due to extensive renovation costs, transferred £4,000 from the Reserve account during October

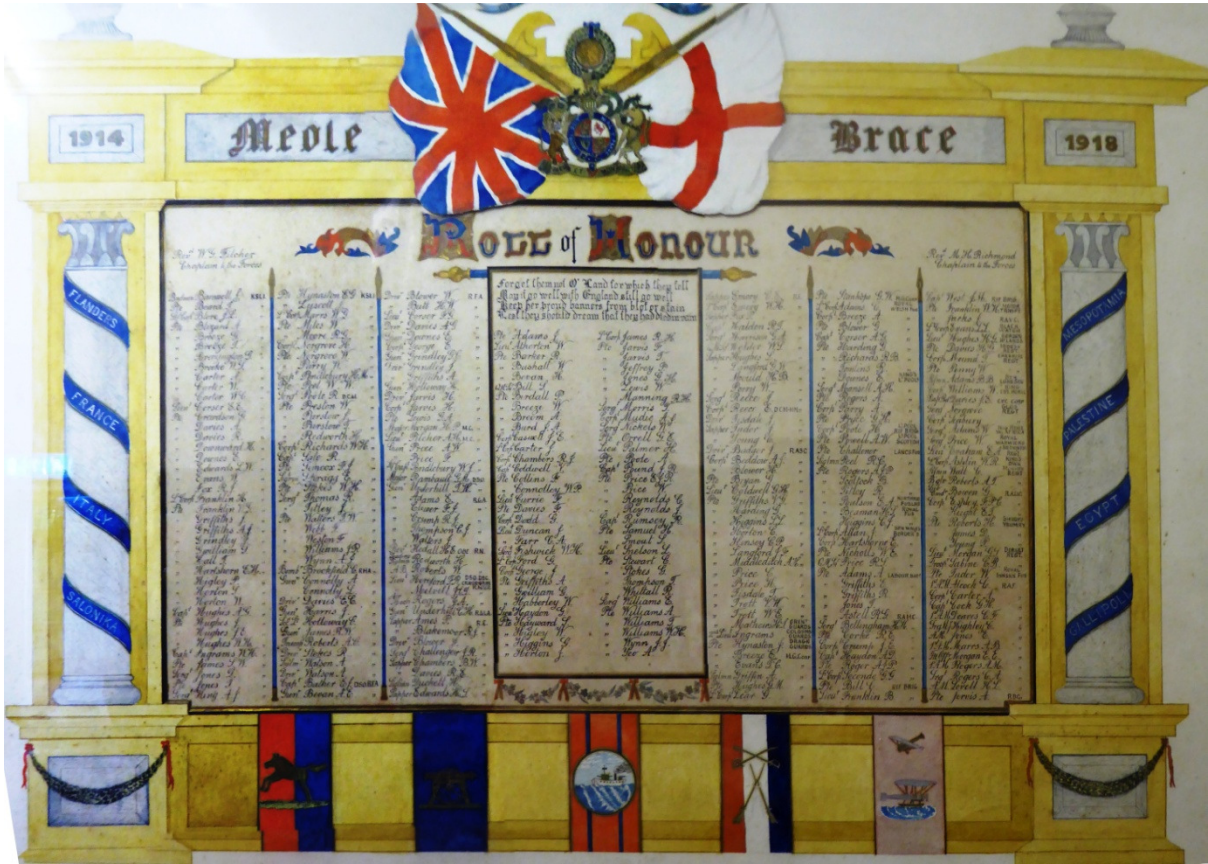
Cleaning costs increased this year as we are doubling up on hours, 1 hr per week given how busy the hall is was deemed not enough, we are very pleased with the standard of the cleaning. Need to remind hall hirers of their commitments to ensuring floors are swept and rubbish is removed etc ready for the next group(s) coming in.

THE MEOLE BRACE PEACE MEMORIAL HALL

England & Wales - Charity number 1170090

Accounts

**Annual Report of Meole Brace Peace Memorial
Hall Charity Reg no. 1170090
January 1st to December 31st 2022**



Address: Meole Brace Peace Memorial Hall, Upper Rd, Shrewsbury SY3 9JP

Trustees: Peter Dunhill (Chair), Jane Williams (Treasurer), Andrew Hulme (Website/Facebook), Anne Davies, Susan Luther (until Sept 2022), Helen Smart

Management Meeting Attenders: Ruth Jones (Nobold WI Rep), Clive Goodwin (Meole Brace garden and Allotment Association Rep)

Contact for bookings: Peter Dunhill 01743 246574, email meolepeacehall@gmail.com

Banking: Nat West, Telford Town Centre, Telford

Insurance cover: Village Guard (Allied Westminster) – Property Damage, Employers Liability, Public Liability, Legal Expenses, Trustee Indemnity

Local authority areas: Shropshire Council and Shrewsbury Town Council

Facebook page: <https://en-gb.facebook.com/pg/Meole-Brace-Peace-Memorial-Hall-538869346237711/about/>

Website: <https://sites.google.com/site/meolebracememorialhall/home>

Our facilities

The main hall (12.5 x 6m + Stage: 4.8 x 6m) is equipped for a variety of uses including meetings slide/powerpoint shows, dance, drama, parties, lunches and indoor recreation

- Stage with lighting and curtains.
- Side dressing/green room
- Plenty of stackable tables and chairs.
- Maximum Capacity: 100 people standing, 90 seated
- Wide door and wheel chair access
- Heating

An entrance lobby

A meeting room (4 x 5.7m) that is suitable for committee meetings or refreshments - a partition wall can be opened onto the side of the main hall,

A fitted kitchen with

- Hot water boiler and kettles for drinks
- Fridge
- Electric Cooker
- Microwave

Toilets (male, female, accessible for people with disabilities) and cloakroom area

Plenty of storage space

Off road parking for 7 vehicles + on road parking – we are located in a built up area

Chairman's Foreword

The start of 2022 saw us cautiously coming out of Covid restrictions and regular bookings resuming. At the end of 2021 I had taken over the role of booking secretary and so I was able to get a first hand 'feel' for how the Hall functions and to meet the Hall users.

An early task was to introduce a new set of hire charges. We had prepared the ground in advance and the fact that there had been no increase since 2014 meant there were no complaints. In one or two instances we exercised our discretion with groups which were struggling financially. In this way we have put 'serving our community' ahead of a strict 'make 'em pay' policy.

We responded to concerns expressed at our 'Revitalise the Hall' consultation day held the previous September by instructing our architect – Steve Hayward – to moderate and modify his refurbishment proposals for what was widely considered to be an overlarge external porch and to reconsider certain elements of the internal layout. We then commissioned a Heritage Impact Assessment and a Preliminary Environmental Assessment both of which were needed to secure Planning Permission for our proposals.



Two Foil Embossing workshops raised over £350 for the Hall refurbishment

In October we were delighted to receive that Planning Permission – there had been no objections at all.

The Art Group, one our regular hirers, responded to the Russian invasion of Ukraine by holding an exhibition with paintings, prints and objects for sale to raise money for Ukrainian refugees. The Group raised over £1200 and the Hall played its part by offering our facility for free and helping with the refreshments on offer.



Susan Luther (left) with former Hall chairman Sula Baugh

We were very sad to learn of the unexpected death of Susan Luther in September. She had joined our Trustee body in April 2022 and brought with her a wealth of experience, humour and local knowledge from her time as chair of the Meole Brace Village Residents Association. She is sorely missed.

The Village Survey, conducted by our local Councillor Bernie Bentick revealed a lot of support for the Peace Memorial Hall as well as many suggestions for activities for young and older people which we will be delighted provide a venue for.

Peter Dunhill

History

Meole Brace Peace Memorial Hall was the product of many years' work by a committee formed to try to create a Peace Memorial in memory of the sacrifices made by local people during the First World War.

Early Committee minutes from 1920 record the failure to raise sufficient funds a very ambitious proposal – spare cash for donations was short at the time

The plan was then changed to building a hall on a piece of land opposite The Sycamores (now known as Millford Lodge) to be donated by the Bather family - Lords of the Manor for many years who had provided the vicars of Meole Brace almost continuously between 1778 and 1931. On the back of this donation it was not long before £180 had been raised.

The committee agreed to purchase a hall built of concrete from a Mr Edwards at a cost of £650. It would contain a room 60ft x 20ft wide, a 20ft x 20ft square club room adjoining, a kitchen equipped with a boiler, and ladies' and gentlemen's cloakrooms with lavatory accommodation.



Bell ringers in Meole Brace c 1920

The building was soon erected and an opening concert arranged for Thursday

October 20th 1921 followed by a whist drive and dance on Friday 21st October. Invitations were sent out to all householders and ex-servicemen who had lived in the area.

There was a dispute with Mr Edwards about a significant disparity between the original estimate and the final cost. Eventually the matter was resolved amicably through negotiation.

The list of committee members over the years includes the surnames of many well known Meole Brace families: Aris, Ashton, Bather, Burd, Chambers, Cox, Edwards, Evans, Griffiths, Harris, Jones, Massie, Purslow and Tanner

This is an A-Z of just some of the groups and functions that the Hall has hosted over the years:

Alexandra Players - Art Classes - Arts Alive - Auction Sales - Boy Scouts - Bridge Club - Child Welfare Clinic - Choirs - Coronation parties for children - Dancing Classes - Gardening Club - General and Local Elections - Girl Guides - Jazz Band - Martial Arts - Men's Institute - Play Groups - Rummage Sales - Salinka Stars - The Women's Institute - Whist Drives

In 2002 many of the Hall Trustees had lost heart and it seemed as though the Hall might close. Even though there were plenty of bookings this was not matched by any enthusiasm to contribute to the running of the Hall. However a public meeting resulted in the election of a new committee and a great number of improvements were made especially to the entrance and cloakroom areas which had a new concrete floor and also to the heating system.

Hall usage

Regular Users during 2022

Meole Brace Garden & Allotment Club – Club talks and Committee meetings
Nobold Womens Institute – 11 evening meetings a year
Salinka Stars (young and teenage dance troupe) – 4.00-9.00 pm every Thursday
Puddles Playgroup – one morning (Friday) every week
Art Group – Monday mornings
Keep Fit – Friday afternoons
Puppy Clases – Saturdays/Sundays
Yoga – Wednesday mornings/Friday evenings
Pilates – Thursday mornings
Dance classes – Tuesdays and Thursdays
Tai Chi – Tuesday evenings
Girl Guides – Thursday evenings



Meole Brace Garden and Allotment Club Annual Show to be reinstated in 2023



Setting up the Frost Faye November 27th 2022

Occasional Users

The hall is used as a *polling station* for local and general elections
Severn Hospice events
Childrens Parties
1940s Dance Nights
Arts Alive Shows (subsidised touring entertainment)
Frost Faye
Play rehearsals – A Carpenters Tale, Dickie Whittington
Tap dancing classes

Booking rates in 2022 (*increases in 2022 in brackets*):

Groups: £9 per hour, £27 for half day /evening session

Parties, events depending on time: £35 - £60



Maintenance + Cleaning

Over the course of the year repairs and maintenance work have been undertaken on the guttering, the toilets and drains, the emergency exits, the heating and the kitchen. Peter Williams (husband of our Treasurer Jane Williams) has made a particularly active contribution this year in sorting out the kitchen lights, and cleaning out the gutter between the two pitched roofs. Rumour has it that the Chairman occasionally turns his hand to miscellaneous repairs. We have also had the front entrance properly patched up thanks to the Paz – partner of Trustee, Helen Smart

In December Lorna, our cleaner for the last 15 years let us know that she had been offered extra hours at the school where she works and that she would have to give her notice to the Hall. She had done an amazing job in keeping the Hall – a challenging environment – clean and tidy. After a couple of false starts, we have now allotted an extra hour to the task and taken on two local people to undertake the task.

Inspections

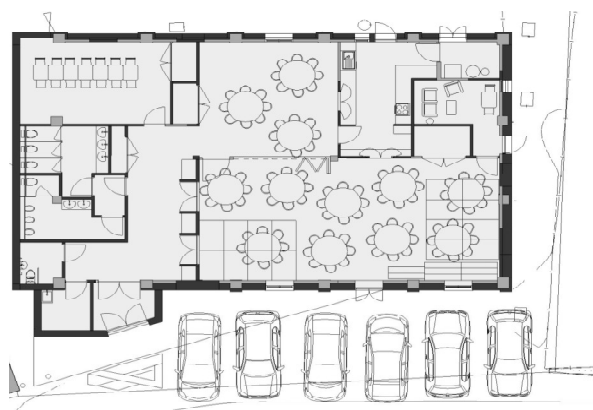
The Hall has complied with the legal requirement to have annual (electrical) Portable Appliance Tests and a commercial gas installation examination. The latter revealed a minor leak in the pipe connecting the meter to the boiler and heaters. This was immediately rectified. The five yearly electrical inspection will take place in early 2023.



Our planning Permission notice

Plans for Hall improvements

During the year we focussed our attention on our major refurbishment project. Our architect Steve Hayward's design has ensured the structural stability of the building, improved energy efficiency and comfort and in general created a modern and welcoming ambience while retaining the traditional feel of a village hall.



We have now reached the 'technical design' stage where the general concept of the refurbishment has to be translated into a scheme that can be approved by the Council's Building Regulations Department and offered to a local Quantity Surveyor who has volunteered his time for free to give the Trustees some realistic estimates to be used when submitting grant applications.

The Trustees will also need to consider the various heating options bearing in mind costs and energy efficiency.

Summary of Annual Accounts

Receipts	2022	2021
	£	£
Hire of Hall		4546
Donations		31
Interest		1
Fundraising		635
Electricity meter		0
Grants/other		16097
Total income		21309
Current account b/f		13549
Reserve account b/f		7584
Total brought forward		21133
Cash in hand b/f		264
Overall total		42706

Payments	2022	2021
	£	£
Electricity		324
Gas		583
Water		796
Insurance		796
Licences/Subs		116
Maintenance/Repairs		495
Renovation costs		2012
Cleaning		643
Fundraising costs		224
Consumables		219
Printing/Banners		272
Total expenditure		6479
Current account c/f		13505
Reserve account c/f		22585
Total carried forward		36090
Cash in hand c/f		19
Stock held		118
Overall total		42706

This summary is purely indicative. The full inspected accounts are available on request.



An Arts Alive production in November 2022

The Meole Brace Peace Memorial Hall

(Registered Charity Ref 1170090)

Financial Statement for the Period 1 January 2022 to 31 December 2022

<i>Receipts</i>	2022	2021	<i>Payments</i>	2022	2021
Hire of hall receipts	8,634	4,546	Electricity	564	324
Donations received	10	31	Gas	1,273	583
Interest received	53	1	Water	354	796
Fundraising proceeds	1,138	635	Insurance	813	796
Electricity Meter	28	-	Licences/Subscriptions	198	116
Grants/Other	2,670	16,097	Maintenance and Repairs	1,118	495
			Renovation Costs	5,286	2,012
			Cleaning	709	643
			Fundraising costs	123	224
			Goods & Consumables	163	219
			Admin Costs/Printing	251	272
			Expenditure from Grants		
Total Receipts	12,533	21,309	Total Payments	10,852	6,479
<i>Bank Balances brought fwd</i>			<i>Bank Balances carried fwd</i>		
Current Account	13,505	13,549	Current Account closing	12,223	13,505
Reserve Accounts	22,585	7,584	Reserve Accounts closing	25,638	22,585
Bank totals brought fwd	36,090	21,133	Bank totals carried fwd	37,861	36,090
Cash in hand brought fwd	19	264	Cash in hand carried fwd	2	19
Stock held	118		Stock held	45	118
Grand Totals	48,760	42,706	Grand Totals	48,760	42,706

Notes

Income from hall hire increased by £4,088 (90%) as the hall was fully open in 2022 and prices were increased from January 2022

2022 net income (less expenditure) is £1,681. Total bank and cash reserves now total £37,863.

There was a grant received from Shropshire Council in February 2022 for £2,670. No further grants are expected.

Fundraising - there were two hall run events held during 2022. A 1940s night held in February raised income of £190 from bar takings alone, and the Frost Fayre in November raised £593 (2021 event raised £310)

Renovation costs include 2 payments to Architects - £1700 plus £2400, and payment to Winterborn Heritage of £560, as well as an environmental survey of £360

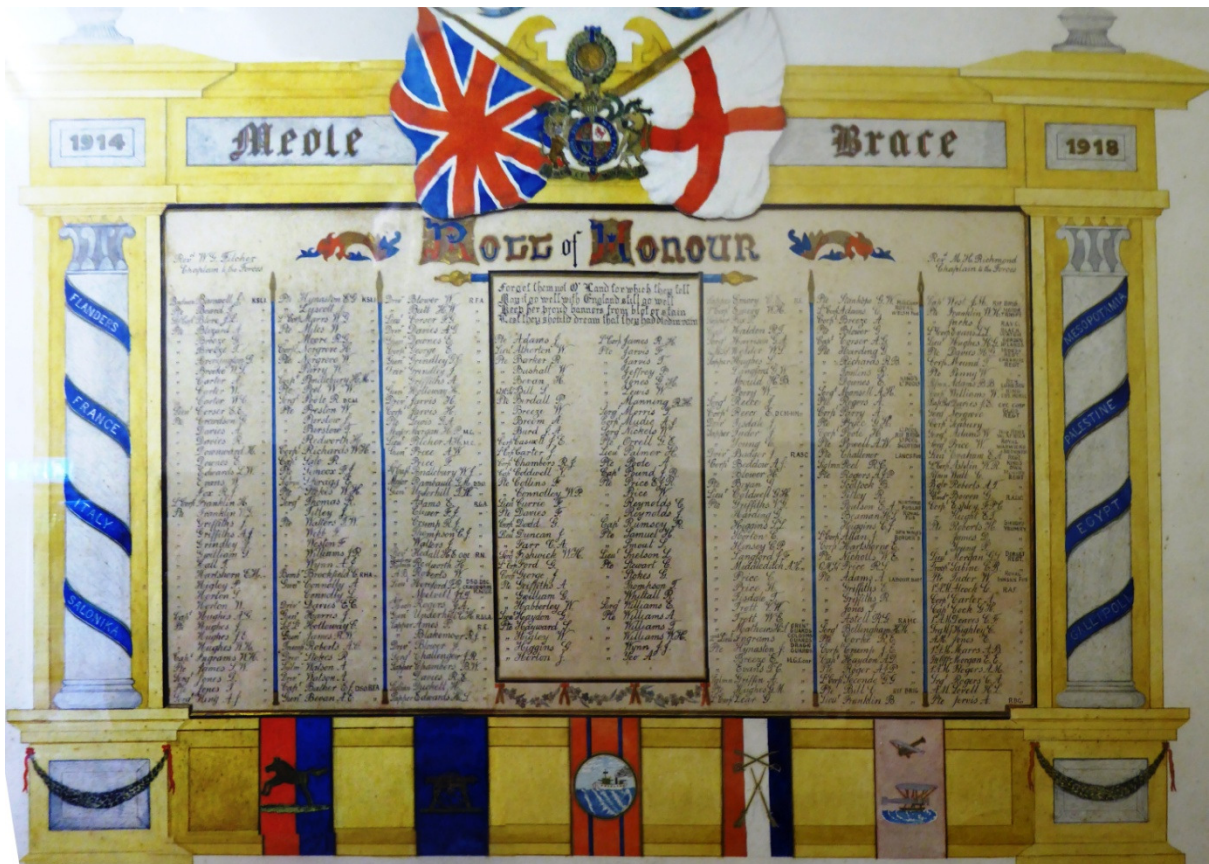
Gas and Elect prices have increased, although have been tempered with a fixed price tariff

THE MEOLE BRACE PEACE MEMORIAL HALL

England & Wales - Charity number 1170090

Accounts

Annual Report of Meole Brace Peace Memorial Hall Charity Reg no. 1170090 January 1st to December 31st 2021



Address: Meole Brace Peace Memorial Hall, Upper Rd, Shrewsbury SY3 9JP

Trustees: Peter Dunhill (Chair), Jane Williams (Treasurer), Andrew Hulme (Website/Facebook), Anne Davies, Barbie Holden (Booking Secretary - resigned November 2021), Frankie Crane (Minutes Secretary)

Management Meeting Attender: Ruth Jones (Nobold WI Rep)

Contact for bookings: Peter Dunhill 07944 673648, email meolepeacehall@gmail.com

Banking: Nat West, Telford Town Centre, Telford

Insurance cover: Village Guard (Allied Westminster) – Property Damage, Employers Liability, Public Liability, Legal Expenses, Trustee Indemnity

Local authority areas: Shropshire Council and Shrewsbury Town Council

Facebook page: <https://en-gb.facebook.com/pg/Meole-Brace-Peace-Memorial-Hall-538869346237711/about/>

Website: <https://sites.google.com/site/meolebracememorialhall/home>

Our facilities

The main hall (12.5 x 6m + Stage: 4.8 x 6m) is equipped for a variety of uses including meetings slide/powerpoint shows, dance, drama, parties, lunches and indoor recreation

- Stage with lighting and curtains.
- Side dressing/green room
- Adequate supplies of tables and chairs.
- Maximum Capacity: 100 people standing, 90 seated
- Wide door and wheel chair access
- Heating

An entrance lobby

A meeting room (4 x 5.7m) that is suitable for committee meetings or refreshments - a partition wall can be opened onto the side of the main hall,

A modern fitted kitchen with

- Hot water boiler for drinks
- Fridge
- Electric Cooker
- Microwave

Toilets (male, female, accessible for people with disabilities) and cloakroom area

Plenty of storage space

Off road parking for 7 vehicles + on road parking – we are located in a built up area

Chairman's Foreword

Inevitably Covid 19 and its associated variants and concerns continued to affect the Peace Memorial Hall during 2021 though for the most part we were open. Wiping down, hand sanitising, physical distancing, air circulation and test and trace continued to be requirements for user groups for the greater part of the year.



We were offered government/local authority compensatory grants to cover the loss of income resulting from reduced bookings and these were very welcome. These grants also helped us to progress our renovation plans.

One of the highlights of our 'Prepare to Refresh' project activity was our consultation day in September. We combined a display of our architect, Steve Hayward's plans with a photographic exhibition of Meole Brace people and places from the past. Local people responded very generously to a call for old photos which definitely encouraged members of our community to call in and have their say.

Consultation does not guarantee consensus and there were many differing views expressed. However there was marked number of people who felt strongly that the proposed 'lantern' style entrance porch was out of proportion to

the rest of the design. This view was also reflected in comments on the Meole Village Facebook page. The design has since been modified and, while still bold and modern, has been generally accepted as appropriate.

In terms of regular bookings we have said goodbye to Action for Children and the Boxing Academy but have welcomed a reformed art group, Happy Paws puppy training classes and a yoga group.

A letter from the Land Registry in March confirming our change of charitable status and technical ownership of the Hall was received with a huge sigh of relief.

At the end of the year we held a very successful and well attended Frost Fayre organised by our treasurer Jane Williams in co-operation with members of the Nobold WI and Meole Village Residents Association. This looks like becoming a regular feature on our annual calendar.



Frost Fayre stall holder

I would like to conclude by paying tribute to Barbie Holden who retired as booking secretary in December and also Anne Davies who has kept the hall equipped for many years and has now decided to take a step back.

Peter Dunhill

History

Meole Brace Peace Memorial Hall was the product of many years' work by a committee formed to try to create a Peace Memorial in memory of the sacrifices made by local people during the First World War.

Early Committee minutes from 1920 record the failure to raise sufficient funds a very ambitious proposal –spare cash for donations was short at the time

The plan was then changed to building a hall on a piece of land opposite The Sycamores (now known as Millford Lodge) to be donated by the Bather family - Lords of the Manor for many years who had provided the vicars of Meole Brace almost continuously between 1778 and 1931. On the back of this donation it was not long before £180 had been raised.

The committee agreed to purchase a hall built of concrete from a Mr Edwards at a cost of £650. It would contain a room 60ft x 20ft wide, a 20ft x 20ft square club room adjoining, a kitchen equipped with a boiler, and ladies' and gentlemen's cloakrooms with lavatory accommodation.



Bell ringers in Meole Brace c 1920

The building was soon erected and an opening concert arranged for Thursday

October 20th 1921 followed by a whist drive and dance on Friday 21st October. Invitations were sent out to all householders and ex-servicemen who had lived in the area.

There was a dispute with Mr Edwards about a significant disparity between the original estimate and the final cost. Eventually the matter was resolved amicably through negotiation.

The list of committee members over the years includes the surnames of many well known Meole Brace families: Aris, Ashton, Bather, Burd, Chambers, Cox, Edwards, Evans, Griffiths, Harris, Jones, Massie, Purslow and Tanner

This is an A-Z of just some of the groups and functions that the Hall has hosted over the years:

Alexandra Players - Art Classes - Arts Alive - Auction Sales - Boy Scouts - Bridge Club - Child Welfare Clinic - Choirs - Coronation parties for children - Dancing Classes - Gardening Club - General and Local Elections - Girl Guides - Jazz Band - Martial Arts - Men's Institute - Play Groups - Rummage Sales - Salinka Stars - The Women's Institute - Whist Drives

In 2002 many of the Hall Trustees had lost heart and it seemed as though the Hall might close. Even though there were plenty of bookings this was not matched by any enthusiasm to contribute to the running of the Hall. However a public meeting resulted in the election of a new committee and a great number of improvements were made especially to the entrance and cloakroom areas which had a new concrete floor and also to the heating system.

Hall usage

Regular Users from July 2021

Meole Brace Garden & Allotment Club –

Club talks and Committee meetings

Nobold Womens Institute – Normally 11 evening meetings a year

Salinka Stars (young and teenage dance troupe) – Normally 4.00-9.00 pm every week

Puddles Playgroup –one morning (Friday) every week

Shropshire Musical Singers –one evening per week (Friday)

Art Group – Normally every Monday

Action for Children after school club - Tuesdays

Boxing Academy – Thursdays

Zumba – Tuesday evenings

Keep Fit – Friday afternoons

Puppy Clases –Saturdays/Sundays

Yoga – Wednesday mornings



1940s Dance Night Demonstration

Occasional Users

The hall is used as a *polling station* for local and general elections

Severn Hospice events

Childrens Parties

1940s Dance Nights

Arts Alive Shows (subsidised touring entertainment)

Frost Fayre featuring *Shropshire Musical Singers*

Closure

While the Hall was closed we complied with our Insurer's requirements by undertaking weekly inspections.

Booking rates in 2021 (*increases in 2022 in brackets*):

Groups: £ 7 (£9) per hour, £21 (£27) for half day /evening session

Parties, events depending on time: £28 (£35), £50 (£60)



Meole Brace Garden and Allotment Club Annual Show to be reinstated in 2022



Hall decked out for the Frost Fayre

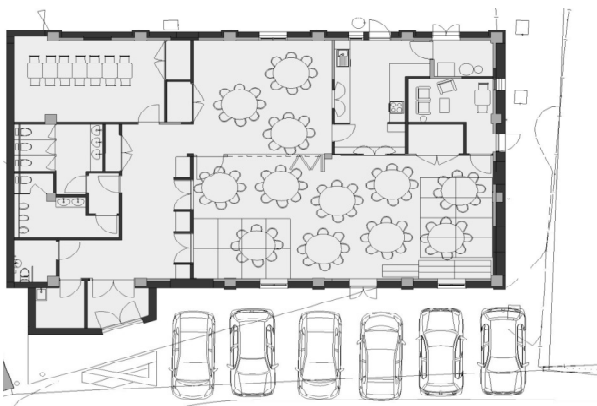
Maintenance + Cleaning

Over the course of the year repairs and maintenance work have been undertaken on, the sliding doors, the toilets and drains, the emergency exits, the heating and the kitchen. Peter Williams (husband of our Treasurer Jane Williams) has made a particularly active contribution this year in sorting out the external lights, and cleaning out the gutter between the two pitched roofs. Thanks must also go to local resident Wendy Taylor who scraped up barrow loads of moss from the car parking area and down the sides of the Hall. Rumour has it that the Chairman occasionally turns his hand to miscellaneous repairs.

Anne Davies has now taken a step back from her stalwart role in overseeing the supply and distribution of cleaning, refuse and hygiene materials. We thank her for her dedication over the years.

Plans for Hall improvements

During the year we focussed our attention on a major refurbishment/rebuilding project designed to ensure the structural stability of the building, improved energy efficiency and comfort and in general creating a modern and welcoming ambience while retaining the traditional feel of a village hall.



Our architect, Steve Hayward, produced outline drawings, both internal and external, for consideration. This led to a very well attended consultation event in September. A wide range of positive views were expressed with a number of practical suggestions. People recognised the spatial benefits of using a demountable staging system instead of a permanent stage as we have at present. However the proposal for a large rectangular lantern over the newly styled porch drew some significant opposition. This has since been toned down to a more acceptable, yet still bold, smaller triangular lantern.

We have received a positive response to a pre planning application submission and undertaken both a Heritage Assessment and an Environmental Assessment which were both supportive. The next stage will be a full planning application. A conservative estimate of around £250,000 has been suggested as a likely funding target.

From this.....



.....to perhaps this



**Come and have your say
about plans for the renovation
of Meole Brace Peace
Memorial Hall, Upper Rd on
Saturday 11th September
12-4 pm**



Consultation event Sept 2021

Land Registry

Having completed the labyrinthine paperwork to transfer the Land Registry registration from the old unincorporated charity trustees to the new Charitable Incorporated Organisation, we eventually secured the new registration in March 2021. The imposition on the Hall of the formal status of an 'Asset of Community Value' required a period of six weeks in which local community members could express an interest in taking over the running of the Hall. No-one came forward and this enabled the provision of the necessary Conveyancer's certificate.

Summary of Annual Accounts

Receipts	2020	2020
	£	£
Hire of Hall	4546	3604
Donations	31	10
Interest	1	7
Fundraising	635	370
Electricity meter	0	35
Grants/other	16097	11500
Total income	21309	15526
Current account b/f	13549	5202
Reserve account b/f	7584	7577
Total brought forward	21133	12779
Cash in hand b/f	264	130
Overall total	42706	28531

Payments	2021	2020
	£	£
Electricity	324	818
Gas	583	1774
Water	796	414
Insurance	796	762
Licences/Subs	116	189
Maintenance/Repairs	495	138
Renovation costs	2012	1540
Cleaning	643	790
Fundraising costs	224	161
Consumables	219	
Printing/Banners	272	548
Total expenditure	6479	7134
Current account c/f	13505	13549
Reserve account c/f	22585	7584
Total carried forward	36090	21133
Cash in hand c/f	19	264
Stock held	118	-
Overall total	42706	28531

We are grateful for the expertise of our volunteer inspector of accounts – Gary Howorth. The full inspected accounts are available as a separate document and can be viewed on request.

Income from Hall hire continued to be lower than normal a result of the COVID 19 restrictions that were in place until July. The impact of this was alleviated by grants from the government via Shropshire Council.

Our Gas and Electricity is now supplied on a fixed rate deal rather than the variable rate that applied during 2019.

Water costs were higher because of a lost cheque that was eventually processed along with its replacement. The situation has been rectified and the Hall now has a credit with Severn Trent.

and some pictures to end on.....



Ava - 1940s Night singer



Frost Fayre stall holder



Shropshire Musical Singers Farewell Concert



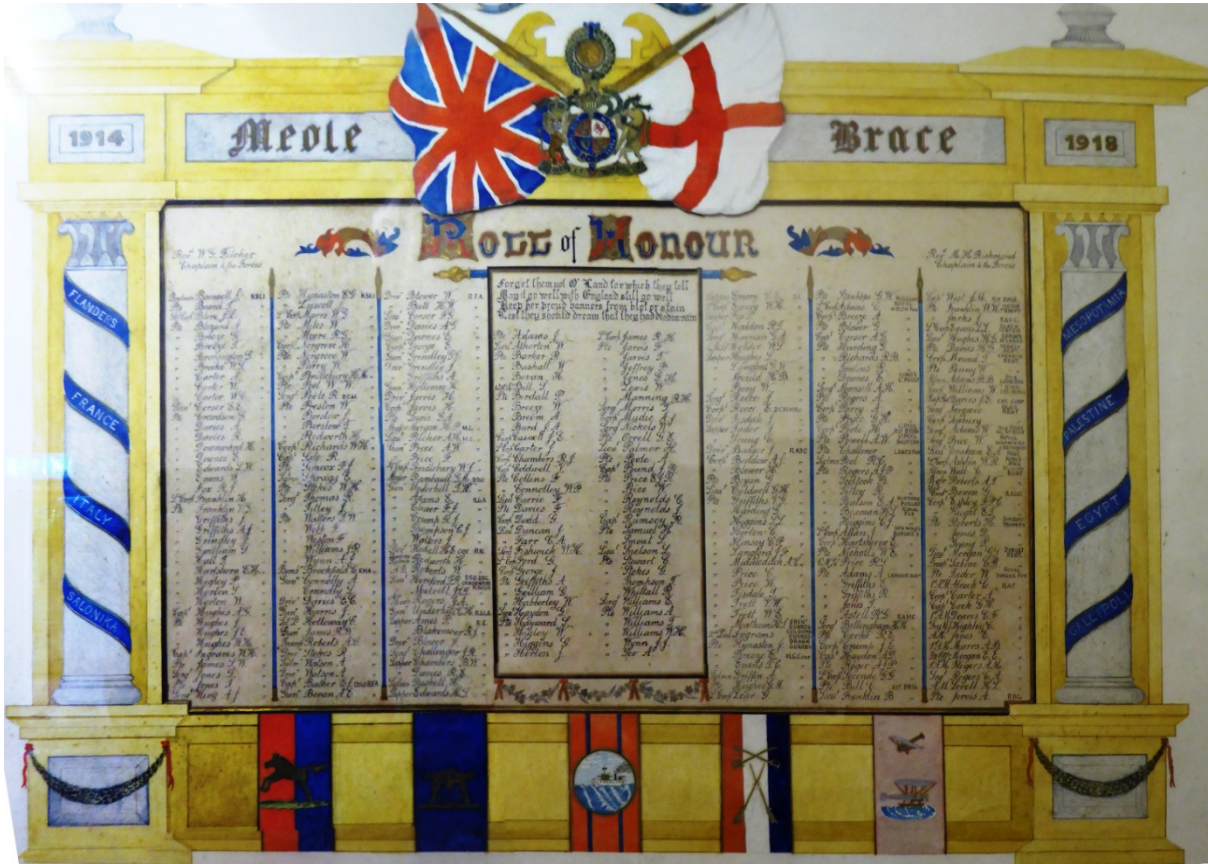
1940s Best dressed competition

THE MEOLE BRACE PEACE MEMORIAL HALL

England & Wales - Charity number 1170090

Accounts

Annual Report of Meole Brace Peace Memorial Hall Charity Reg no. 1170090 January 1st to December 31st 2020



Address: Meole Brace Peace Memorial Hall, Upper Rd, Shrewsbury SY3 9JP

Trustees: Urszula Baugh (as Chair – resigned July 2020, as Trustee resigned December 2020), Jane Williams (Treasurer), Andrew Hulme (Facebook), Anne Davies, Peter Dunhill (Chair from July 2020 and Meole Brace Garden & Allotment Club Rep), Barbie Holden (Booking Secretary and Trustee from June 2020)

Management Committee Attenders: Barbie Holden, Maggie Jones (Minutes Secretary – died March 2020), Ruth Jones (Nobold WI Rep), Frankie Crane (Minutes Secretary from June 2020)

Contact for bookings: Barbie Holden 07944 673648, email

meolepeacehall@gmail.com

Banking: Nat West, Telford Town Centre, Telford

Insurance cover: Village Guard (Allied Westminster) – Property Damage, Employers Liability, Public Liability, Legal Expenses, Trustee Indemnity

Local authority areas: Shropshire Council and Shrewsbury Town Council

Facebook page: <https://en-gb.facebook.com/pg/Meole-Brace-Peace-Memorial-Hall-538869346237711/about/>

Website: <https://sites.google.com/site/meolebracememorialhall/home>

Our facilities

The main hall (12.5 x 6m + Stage: 4.8 x 6m) is equipped for a variety of uses including film-shows, dance, drama, parties, luncheons and indoor recreation

- Stage with lighting and curtains.
- Side dressing/green room
- Adequate supplies of tables and chairs.
- Maximum Capacity: 100 people standing, 90 seated
- Wide door and wheel chair access
- Heating

An entrance lobby

A meeting room (4 x 5.7m) that is suitable for committee meetings or refreshments - a partition wall can be opened onto the side of the main hall,

A modern fitted kitchen with

- Hot water boiler for drinks
- Fridge
- Electric Cooker
- Microwave

Toilets (male, female, accessible for people with disabilities) and cloakroom area

Plenty of storage space

Off road parking for 7 vehicles + on road parking – we are located in a built up area

Chairman's Foreword

This year has inevitably been overshadowed by the Covid 19 pandemic and associated lockdowns of various degrees of severity which has resulted in the Hall being closed between early March and mid September. When we did re-open there were restrictions in place and the number of bookings was seriously reduced. Financially we were able to keep our head above water thanks to a government support grant of £10,000 and a grant of £500 from Shropshire RCC.

Not everything stopped though and we have made progress with our plans to consult our local geographic and 'hirer' community about options for either refurbishing or rebuilding the Hall which though much loved is 'tired', to use a kind word.

I took over the role of Chairman from Sula Baugh in June. Sula has now moved to Much Wenlock and resigned as a Trustee in December. My thanks go to her and her husband George for everything they have done for the Hall over the years.

On a sadder note I must also pay tribute to Bob Mills and Maggie Jones who both passed away at the beginning of the year. Bob had been an active and practical Chairman in both heart and soul for many years preceding Sula's tenure. Maggie had been our Minutes Secretary for two years and was also a creative inspiration when it came to decorating the Hall and running fund raising craft courses. Both will be greatly missed.

I am delighted to have been able to welcome Barbie Holden as a new

Trustee, Frankie Crane as our new Minutes Secretary and also the practical advice of local resident Jane Pittaway who has extensive architectural experience as a former employee of Shropshire Council.



In order to re-open the Hall in September we 'deep' cleaned certain areas of the Hall, put limits on the type and levels of occupancy (17 in the main Hall and 8 in the side room – also no parties), drafted some additional terms and conditions and a risk assessment, and provided instructions and signs to ensure physical distancing. In addition we purchased adequate supplies of hand sanitiser and sterile wipes for Hall users.

This Annual Report also features the unravelling of a bureaucratic knot concerning the Land Registry, some impressive pieces of DIY maintenance and an 'Antiques Roadshow' style booking.

As I write this we are in our second lockdown but we are optimistic that the roll out of the vaccination programme will give both local residents and The Peace Memorial Hall a welcome shot in the arm.

Peter Dunhill

History

Meole Brace Peace Memorial Hall was the product of many years' work by a committee formed to try to create a Peace Memorial in memory of the sacrifices made by local people during the First World War.

Early Committee minutes from 1920 record the failure to raise sufficient funds a very ambitious proposal –spare cash for donations was short at the time

The plan was then changed to building a hall on a piece of land opposite The Sycamores (now known as Millford Lodge) to be donated by the Bather family - Lords of the Manor for many years who had provided the vicars of Meole Brace almost continuously between 1778 and 1931. On the back of this donation it was not long before £180 had been raised.

The committee agreed to purchase a hall built of concrete from a Mr Edwards at a cost of £650. It would contain a room 60ft x 20ft wide, a 20ft x 20ft square club room adjoining, a kitchen equipped with a boiler, and ladies' and gentlemen's cloakrooms with lavatory accommodation.



Bell ringers in Meole Brace c 1920

The building was soon erected and an opening concert arranged for Thursday

October 20th 1921 followed by a whist drive and dance on Friday 21st October. Invitations were sent out to all householders and ex-servicemen who had lived in the area.

There was a dispute with Mr Edwards about a significant disparity between the original estimate and the final cost. Eventually the matter was resolved amicably through negotiation.

The list of committee members over the years includes the surnames of many well known Meole Brace families: Aris, Ashton, Bather, Burd, Chambers, Cox, Edwards, Evans, Griffiths, Harris, Jones, Massie, Purslow and Tanner

This is an A-Z of just some of the groups and functions that the Hall has hosted over the years:

Alexandra Players - Art Classes - Arts Alive - Auction Sales - Boy Scouts - Bridge Club - Child Welfare Clinic - Choirs - Coronation parties for children - Dancing Classes - Gardening Club - General and Local Elections - Girl Guides - Jazz Band - Martial Arts - Men's Institute - Play Groups - Rummage Sales - Salinka Stars - The Women's Institute - Whist Drives

In 2002 many of the Hall Trustees had lost heart and it seemed as though the Hall might close. Even though there were plenty of bookings this was not matched by any enthusiasm to contribute to the running of the Hall. However a public meeting resulted in the election of a new committee and a great number of improvements were made especially to the entrance and cloakroom areas which had a new concrete floor and also to the heating system.

Hall usage

Regular Users

Meole Brace Garden & Allotment Club – Normally club talks and Committee meetings during the year plus the big Garden Show in August

Nobold Womens Institute – Normally 11 evening meetings a year

Watercolour Art Classes – Normally 10 Autumn morning sessions and 10 Spring morning sessions

Tap, Ballet and Private lessons Normally one evening per week during term time

Craft meeting – one session (1.30-3.30) per month

Salinka Stars (young and teenage dance troupe) – Normally 4.00-9.00 pm every week

Shrop Sings – Normally evenings, weekly, term time only

Puddles Playgroup – Normally one morning (Friday) every week

Shropshire Musical Singers – Normally one evening per week (Sept till end of June)

Anderson Art Group – Normally every Friday



New Users this year

Italian for children - weekly

Yoga (2 different sessions

Zumba – weekly

Action for Children after school club – weekly

Antiques valuation day



Occasional Users

The hall is used as a *polling station* for local and general elections

Normally 4 x *Severn Hospice* events – Severn Hospice is our special charity and we give 4 free bookings per year

Normally 25 x *Parties* including New Year's Eve

Normally 2 x *Fund raising event* for the Hall – Shropshire Musical Singers/1940s group

Normally 3 x *Arts Alive Shows*

(subsidised touring entertainment)

2 x *Music practice/rehearsal*

1 x *Music concert* from a private teacher

1 x *Macmillan Cancer Support* coffee morning

Closure

While the Hall was closed we complied with our Insurer's requirements by undertaking weekly inspections.

Booking rates (to be reviewed in 2021):

Groups: £ 7 per hour, £21 for half day /evening session

Parties, events (eg Arts Alive): £28, 12 hr session: £50, double (2x 3hrs) session: £35

Maintenance + Cleaning

Over the course of the year repairs and maintenance work has been undertaken on, the sliding doors, the toilets and drains, the emergency exits, the heating and the kitchen. Peter Williams (husband of our Treasurer Jane Williams) has made a particularly active contribution this year in sorting out the external lights, replacing a rare internal fluorescent tube and mending persistent leaks in our front guttering. Thanks must also go to local resident Wendy Taylor who scraped up barrow loads of moss from the car parking area and down the sides of the Hall. Rumour has it that the Chairman occasionally turns his hand to miscellaneous repairs.



Anne Davies has, as ever, been a stalwart in overseeing the supply and distribution of cleaning, refuse and hygiene materials

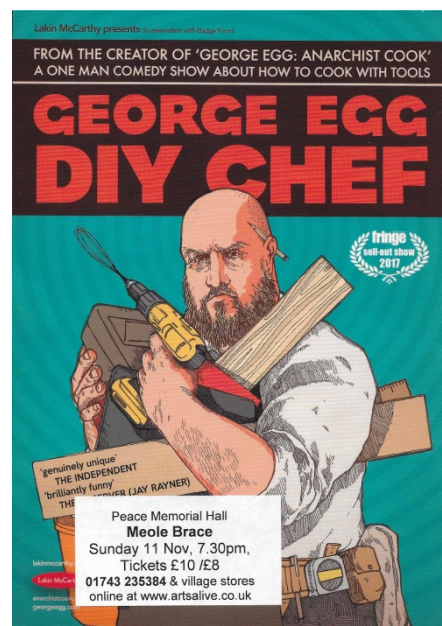
Plans for Hall improvements

Having replaced the floor and ensured that the Hall could safely continue to be used for regular and occasional bookings we have now turned our attention to a major refurbishment or rebuilding project designed to ensure the structural stability of the building, improved energy efficiency and comfort and in general creating a modern and welcoming

ambience while retaining the traditional feel of a village hall.

At the end of last year we commissioned architect Steve Hayward to produce outline drawings, both internal and external, for consideration. He has attended three meetings to date and we now have a general committee consensus on both the proposed internal layout and also a new entrance. We have been able to finance this work thanks to two grants (£750 and £250) from Shrewsbury Town Council. We are grateful for the support that Gwen Burgess, our local Councillor, has given us.

Currently we have sent our draft plans to Shropshire Council as a 'pre-application submission' to garner some early feedback before embarking on a local area wide consultation about the proposals. Following appropriate amendments we will begin to seek funding and support. A conservative estimate of around £250,000 has been suggested as a likely target.



Land Registry

Having completed the labyrinthine paperwork to transfer the Land Registry registration from the old unincorporated charity trustees to the new Charitable Incorporated Organisation, we are optimistic that the new registration will be in place early in 2021. Our case was hampered by the unnecessary imposition on the Hall of the formal status of an 'Asset of Community Value' which we undoubtedly are but did not need the legal complexities that this brought with it. That issue was resolved by dogged perseverance in pursuit of common sense and a Conveyancer's certificate.

Summary of Annual Accounts

Receipts	2020	2019
	£	£
Hire of Hall	3604	6710
Donations	10	121
Interest	7	15
Fundraising	370	1248
Electricity meter	35	35
Grants/other	11500	36
Total income	15526	8165
Current account b/f	5202	5260
Reserve account b/f	7577	7562
Total brought forward	12779	12822
Cash in hand b/f	130	146
Overall total	28531	21153

Payments	2020	2019
	£	£
Electricity	818	966
Gas	1774	2142
Water	414	538
Insurance	762	774
Licences/Subs	189	361
Maintenance/Repairs	138	708
Renovation costs	1540	1200
Cleaning	790	800
Fundraising costs	161	361
Admin/Printing	548	297
Total expenditure	7134	8147
Current account c/f	13549	5202
Reserve account c/f	7584	7577
Total carried forward	21133	12779
Cash in hand c/f	264	130
Stock held	-	96
Overall total	28531	21152

We are grateful for the expertise of our volunteer inspector of accounts – Gary Howorth.

The full inspected accounts are available as a separate document and can be viewed on request.

Income from Hall hire has dropped as a result of the COVID 19 pandemic. The impact of this was alleviated by grants from the government via Shropshire Council and the Rural Community Council.

Our Gas and Electricity is now supplied on a fixed rate deal rather than the variable rate that applied during 2019.

The Meole Brace Peace Memorial Hall

(Registered Charity Ref 1170090)

Financial Statement for the Period 1 January 2020 to 31 December 2020

Receipts	2020	2019	Payments	2020	2019
Hire of hall receipts	3,604	6,710	Electricity	818	966
Donations received	10	121	Gas	1,774	2,142
Interest received	7	15	Water	414	538
Fundraising proceeds	370	1,248	Insurance	762	774
Electricity Meter	35	35	Licences/Subscriptions	189	361
Grants/Other	11,500	36	Maintenance and Repairs	138	708
			Renovation Costs	1,540	1,200
			Cleaning	790	800
			Fundraising costs	161	361
			Goods & Consumables	-	-
			Admin Costs/Printing	549	297
			Expenditure from Grants		
Total Receipts	15,526	8,164	Total Payments	7,134	8,147
Bank Balances brought fwd			Bank Balances carried fwd		
Current Account	5,202	5,260	Current Account	13,549	5,202
Reserve Accounts	7,577	7,555	Reserve Accounts	7,584	7,577
Bank totals brought fwd	12,779	12,815	Bank totals carried fwd	21,133	12,779
Cash in hand brought fwd	130	172	Cash in hand carried fwd	264	130
Stock held	96		Stock held	-	96
Grand Totals	28,531	21,152	Grand Totals	28,531	21,152

Notes

Income from hall hire has dropped this year as a direct impact of the COVID19 pandemic, forcing the hall to be closed from mid March.

The hall temporarily re-opened during Sept to December with only a small number of regular hirers returning, and no parties were held

Prices were last revised in 2014, price review being considered now

Cash held - Bank and in hand totals £21,352, an increase of £8,443 from the end of 2019. Main reason is despite hall closure we received grants of £11,500 from Shropshire Council and RCC in response to the pandemic

Stock held from recent events - stock held of £136, less £48 wine purchased by Trustees and the remainder valued as £88 was written off in the accounts as no further events can be held and stock expiry dates do not allow to be kept