

THE SANDCASTLE TRUST

ANNUAL REPORT AND ACCOUNTS
FOR THE YEAR ENDED 5 APRIL 2023

CONTENTS

	Page(s)
Reference and Administrative Information	1
Trustees' Report	2–9
Statement of Trustees' Responsibilities	10
Independent Examiner's Report to the Trustees	11
Financial statements	12- 14
Notes to the Financial Statements	15 - 20

THE SANDCASTLE TRUST

REFERENCE AND ADMINISTRATION INFORMATION

P O Box 873, Haywards Heath, West Sussex, RH16 9QL
Registered Charity No. 1169523

Committee of Trustees

Mrs D. Singleton (Chair until 12 July 2023)
D. Singleton
L. Dodd
C. Bateman (resigned 12 July 2023)
E. Bateman
I. Bateman
L Brooker
M. Holland
S. Eldridge (appointed 12 July 2023)

Independent Examiner

David Wheeler FCCA
Cheeld Wheeler & Co
Chartered Certified Accountants
Redhill Chambers
2D High Street
Redhill
Surrey, RH1 1RJ

Bankers

CAF Bank
25 Kings Hill Avenue
Kings Hill
West Malling
Kent, ME19 4JQ

THE SANDCASTLE TRUST **TRUSTEES' REPORT**

The Trustees present their report and the accounts for the year ended 5 April 2023.

STRUCTURE GOVERNANCE & MANAGEMENT

The Sandcastle Trust

The Sandcastle Trust was formed as a charitable incorporated organisation on 6 October 2016.

Trustees

Under its Constitution, the activities of the Sandcastle Trust are co-ordinated by a Committee of Trustees whose powers and responsibilities are defined in the Governing Document. The Trustees also decide on the general policy to be adopted in the pursuance of the objectives of the Trust. When the need arises, new trustees will be appointed with regard to their experience and background to further the activities of the Trust. The Committee of Trustees during the financial year being reported on are set out on page 1.

Public Benefit

The Trustees have complied with the duty to have regard to the public benefit guidance published by the Charities Commission.

AIMS, OBJECTIVES AND ACTIVITIES

The objects of the Sandcastle Trust as stated in our Articles of Association are for the public benefit, the relief of sickness of those with a rare genetic condition: to provide practical and emotional support to families living within the UK whereby a member or members of that family have been diagnosed with a rare genetic condition. Particular emphasis is placed on providing affected families with opportunities for family respite.

Mission: The Sandcastle Trust walks alongside families living with a rare genetic condition to help them build positive family memories, strengthen family relationships, reduce isolation, and improve emotional wellbeing and resilience.

We increase public awareness of the needs and issues that families living with rare genetic conditions face; signpost to sources of support and affect positive change through our work.

Beneficiaries: A family is eligible for The Sandcastle Trust's support when an individual(s) within it have been diagnosed with a rare genetic condition (single gene inheritance, mitochondrial inheritance or chromosome disorder). The Sandcastle Trust defines rare as a condition that affects less than 5 in 10,000 of the general population. The diagnosis must be clinically evidenced. At least one of the following must also apply:

- (i) The condition is degenerative;
- (ii) The condition is life threatening;
- (iii) The condition is life limiting;
- (iv) The condition results in complex health needs, physical disability and/or learning disabilities that have an enduring impact on their family's choices, ability to access social opportunities and enjoy family life; and/or
- (v) A family has suffered a bereavement as a result of a rare genetic condition.

The Sandcastle Trust supports families where a child, dependent young adult or parent has a diagnosis. Many of the families we support often have multiple family members with the same condition. We work with a wide range of referral partners such as disorder specific charities, regional genetic centres, hospices, health, community and social care organisations. However, families can also self-refer.

The Need: There are approximately 6,000 diagnosed genetic conditions. Each affects less than 0.1% of the UK's population, but together they are one of the greatest causes of disability and early death and affect the lives of 3 million people in the UK (source: National Human Genome Research Institute). Collectively, therefore, they are not rare at all. Symptoms of rare genetic conditions vary but can include physical disability, learning difficulty, mental health and social issues.

Significant financial challenges are likely to present themselves for most families living with a rare genetic condition. Many family members find they have to take on a full-time caring role, which understandably can add to the economic strain as well as having an emotional and practical impact. The families we supported in 2022/23 reported facing significant and multiple socio-economic challenges in their lives:

- Mental health issues - 83%;
- Isolation - 86%;
- Increased stress - 93%;
- Feeling unsupported in caring role - 71%;

- Concern for unaffected siblings identifying as young carers -69%
- Annual household income below the national average – 69%
- Living in relative income poverty (i.e. less than 60% of the average UK household income) – 26%
- Caring responsibilities directly impact on the number of hours they or their partner were able to work - 98%
- Disability benefits not meeting the additional costs their family incurs as a direct result of a rare genetic condition – 94%
- Financial implications of their situation mean it is difficult to spend quality family time together outside of their day to day routine which has a detrimental impact on emotional wellbeing – 96%

Our Support: Our work is delivered through our four Sandcastle Support Services.

1. Our Sandcastle Memories Family Respite Service is our largest support programme and provides bespoke family respite to families when a child, young dependent adult or parent is living with a rare genetic condition. We also offer respite support to families who have experienced bereavement as a result of a rare genetic condition.

This support programme gives families living with a rare genetic condition the opportunity to spend quality time together away from their daily routine to refresh and re-energise so that they are able to cope with the emotional and physical rigor of caring in the long-term and support their emotional wellbeing and resilience.

2. Our Sandcastle Smiles Service provides registered families with regular opportunities for family fun and engagement activities within the home. Families can also apply for well-being focused or therapeutic equipment. This category of support was developed as part of our Coronavirus response and now forms a permanent part of our offer.
3. Our Sandcastle Connections programme aims to alleviate social isolation by helping families build connections across the rare genetic condition community. Connecting with others in a similar situation can be a vital avenue of support for families living with a rare genetic condition and result in lasting friendships and peer support networks.
4. Finally, the Sandcastle Support Hub on our website contains lots of useful resources and signposting to reliable information for families who are affected by a rare genetic condition.

ACHIEVEMENTS AND PERFORMANCE

- We supported 207 families with a *Sandcastle Memory family respite break, annual pass or day out* in 2022/23.
- We provided 194 families with a *Sandcastle Smile* in 2022/23.
- 404 new families registered as *Sandcastle Families* to access our services during the reporting period and 401 indicated they were willing to provide peer support to other families as part of our *Sandcastle Connections* programme.
- Our *Sandcastle Support Hub* had 1792 unique page views in this reporting period.


2022-23


A snapshot of what we have been up to this year!

ADAPTED CARAVAN

Following the pandemic the cost of UK breaks in accessible accommodation rocketed. In order to continue to meet the high demand for our Sandcastle Memories Family Respite Service, we launched a fundraising appeal to purchase our own accessible static caravan.

We are hugely grateful to everyone that donated or held a fundraising event to support this appeal, which enabled us to purchase a second hand fully accessible caravan on the Southview Holiday Park in March 2023.



SANDCASTLE SMILES

In June we hosted a virtual 'Bake your Own' Platinum Jubilee Family Afternoon Tea to help the rare genetic condition community come together to celebrate the Queen's Platinum Jubilee whilst creating some fun family memories. 192 families received a box containing everything they needed to bake lots of yummy treats together and throw a family Platinum Jubilee Afternoon Tea, including Union Jack decorations!



SANDCASTLE MEMORIES - SAM'S STORY



In February 2021, aged 13 months, Sam was diagnosed with infantile-onset Pompe Disease, a metabolic genetic condition that affects all muscles of the body, including the heart and lungs. Without treatment the prognosis is bleak and doctors told parents Harriette and Graham they didn't think Sam would survive.

"It was heart-breaking, and our lives started unravelling before us," Harriette recalls. "You never think this will happen to you."

Luckily Sam was approved for a new experimental treatment of enzyme therapy. After four months in hospital and two weeks in a hospice to support the couple in caring for Sam at home, he was able to go home. His parents were trained to give the enzyme replacement therapy infusion, every fortnight, at home.

Since then Sam has defied the doctors' expectations. He has regained some movement in his arms and upper body and improved his core strength, so he can sit with support and play with toys, greatly improving his quality of life. He has many complex medical needs; he is fed through a gastrostomy tube and he needs to use a wheelchair. He sleeps with a ventilator as he can stop breathing during the night and has an overnight carer five nights a week. However, he no longer needs 24-hour oxygen, which is a real breakthrough.

Harriette says: "Sam's condition will always be life-limiting, but doctors are thrilled with how he is doing. He is non-verbal but he babbles and uses Makaton. You can definitely tell what he wants!"

With Sam no longer needing full-time oxygen, the couple started to think about the possibility of a holiday together and applied for the Sandcastle Trust's Sandcastle Memories Service, which offers respite for families living with a rare genetic condition, in the form of UK breaks and days out. They arranged a week's stay for the family in Polzeath, Cornwall.

Harriette and Graham drove from their home in Worcestershire, with the car full of all the equipment needed to look after Sam, including his wheelchair, night-time ventilator, peg feeding equipment, medication, and rescue oxygen. It was the first time the couple felt confident enough taking Sam away for a week, due to his complex medical needs.

Harriette says: "Sam loved it. He has never really seen the sea before, and he had never been to a beach. The weather was rough, and he loved watching the waves crashing against the rocks. He just wanted to stare at the sea for an hour. He was able to build sandcastles with his dad and we carried him into the sea to get his feet wet. We went to the Eden project which was amazing and so sensory and accessible for Sam and in Padstow he loved seeing the boats in the harbour and saw lifeboats launching."

"It was lovely to get away and do something just for us," Harriette adds. "It is a full-time job and exhausting looking after a child with medically complex needs. In Cornwall we could switch off from the day to day, press pause and allow us to be a normal family. We are so grateful to the Sandcastle Trust."

SUPPORT SERVICES COORDINATOR RECRUITED

In October we welcomed our first permanent member of staff - a Support Services Coordinator. Meet Ali who plays a key role in ensuring that our services and projects are planned and delivered smoothly. She also builds relationships with referral partners within the genetic condition community to help promote our services and increase their reach and uptake.



SANDCASTLE SANTA 2022

It was no coincidence that Sandcastle Santa 2022 was our biggest yet - we treated 179 families living with a rare genetic condition to an accessible, festive day out. Families living with a rare genetic condition are finding the cost-of-living crisis hard to navigate, many having to sacrifice basic necessities like heating or food in order to meet the costs of keeping vital, often life-saving equipment running and to pay for transport to and from hospital.

Giving the gift of a festive day out is a small thing but one that brings joy and lets families in our community know that The Sandcastle Trust is here and we understand.



FINALISTS IN THE SMILEY CHARITY FILM AWARDS

Our short film featuring Oscar and Theo's parents sharing their experience of living with a rare genetic condition and how The Sandcastle Trust supported them, was an entrant in the Smiley Charity Awards.

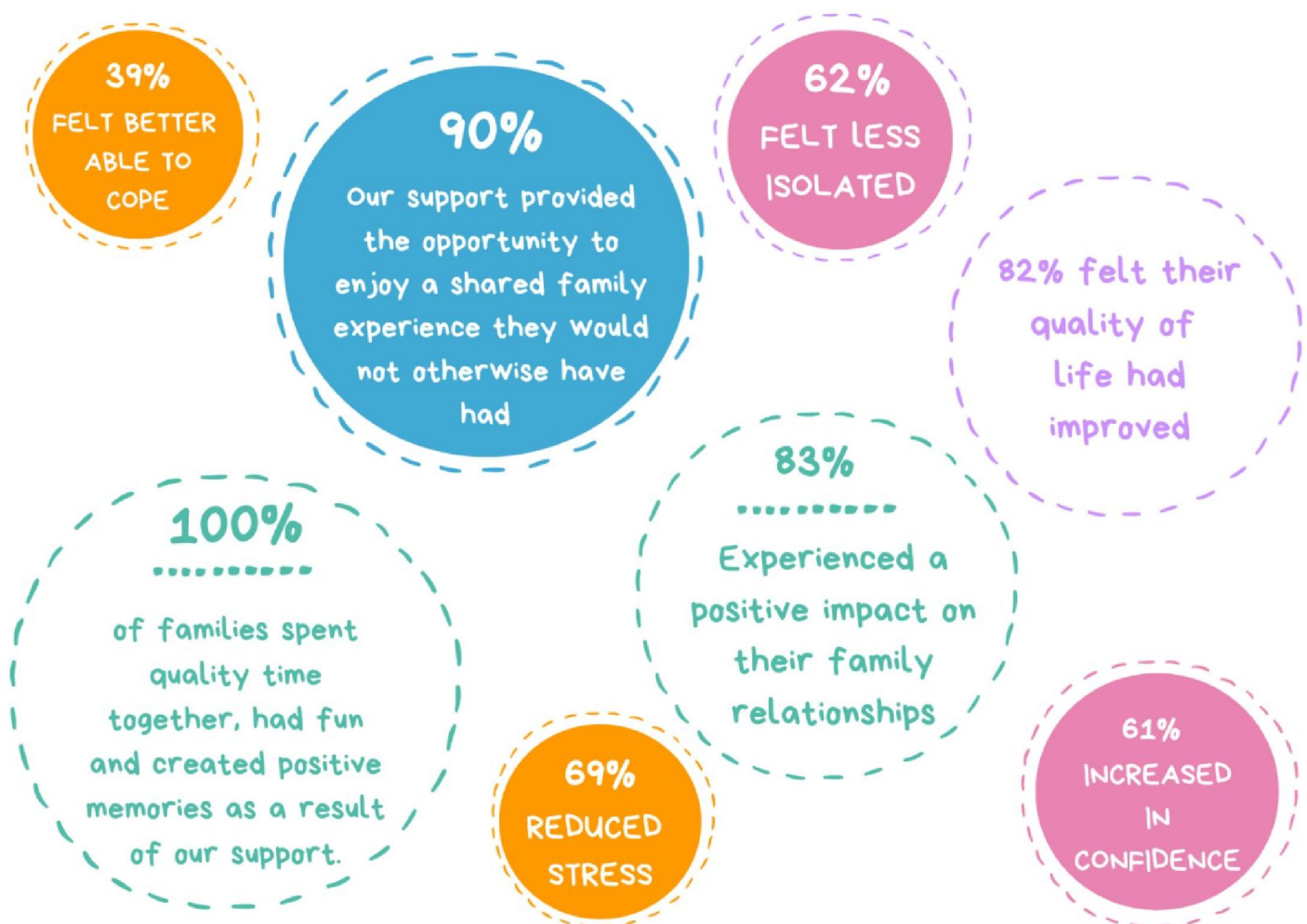
In February we were thrilled to be announced as finalists! While we did not win in our category, we felt privileged to be involved and it was a great opportunity to raise awareness of rare genetic conditions and the support provided by our charity.



There's so many things that just happen day to day that you wouldn't think of

Our Impact: We carry out beneficiary surveys to monitor the impact of each of our support programmes in various outcome areas that we have identified as contributing to improved emotional wellbeing and resilience.

This, combined with qualitative feedback on our services, demonstrates they improve mental health outcomes, reduce isolation, help carers to maintain their quality of care and generally provide a positive focus which can empower families with a new enthusiasm and strength to deal with the ongoing daily struggles of illness, gruelling hospital treatment and sometimes a devastating loss.



FINANCIAL REVIEW

We are incredibly grateful to the individuals who have donated to or fundraised for The Sandcastle Trust this year and to the trusts and foundations that have supported our work.

As a result, we saw our income grow this year from £64,452 in the prior year to £112,481. During the year The Sandcastle Trust spent £49,702 on charitable activities, compared to £48,592 in the previous period. As at 5 April 2023, the Trust had accumulated funds of £70,498 of which £49,504 (2022- £12,092) were in restricted funds and £20,994 (2022 - £7,446) were in unrestricted funds.

The growth of income during 2022/23 has improved the financial position of the charity, however the need and demand for our services continues to grow at a much faster rate.

FUTURE PLANS

In 2023/24 we intend to continue delivering our four key services – Sandcastle Memories, Smiles, Connections and Support but further develop some of the activities within those programmes and extend the reach of our work, so that every family living with a rare genetic condition in the UK can access our support.

In order to achieve this, we will need to improve our fundraising performance, continue to grow our supporter base and effectively steward our supporters to gain their long-term commitment. However, we anticipate that the UK fundraising environment will continue to be challenging due to the cost of living crisis and so we will be exploring other ways that we can diversify and develop new income streams for the charity, so that we are sustainable into the future.

RESERVES POLICY

The Trustees' policy is to maintain free reserves in unrestricted funds of a minimum of £5,000 in order to ensure that governance costs are covered and that sufficient funds are available to continue the charity's current activities in the short term while consideration is given to ways in which additional funds may be raised.

THE SANDCASTLE TRUST
STATEMENT OF TRUSTEES' RESPONSIBILITIES

The trustees are responsible for preparing the Trustees' Annual Report and the financial statements in accordance with applicable law and United Kingdom Accounting Standards (United Kingdom Generally Accepted Accounting Practice).

The law applicable to charities in England and Wales requires the trustees to prepare financial statements for each financial year which give a true and fair view of the state of affairs of the charity and of the income and expenditure of the charity for that period. In preparing these financial statements, the trustees are required to:

- select suitable accounting policies and then apply them consistently;
- observe the methods and principles in the Charities SORP;
- make judgements and estimates that are reasonable and prudent;
- state whether applicable accounting standards have been followed, subject to any material departures disclosed and explained in the financial statements;
- prepare the financial statements on the going concern basis unless it is inappropriate to presume that the charity will continue in operation.

The trustees are responsible for keeping proper accounting records that disclose with reasonable accuracy at any time the financial position of the charity and enable them to ensure that the financial statements comply with the Charities Act 2011, the Charity (Accounts and Reports) Regulations 2008 and the provisions of the trust deed. They are also responsible for safeguarding the assets of the charity and hence for taking reasonable steps for the prevention and detection of fraud and other irregularities.

The trustees are responsible for the maintenance and integrity of the charity and financial information included on the charity's website in accordance with legislation in the United Kingdom, governing the preparation and dissemination of financial statements.

Approved by the Trustees on 1 December 2023 and signed on their behalf by:



.....
Eleanor Bateman
Trustee



.....
Luke Brooker
Treasurer

THE SANDCASTLE TRUST
INDEPENDENT EXAMINER'S REPORT TO THE TRUSTEES

I report to the trustees on my examination of the accounts of the Sandcastle Trust for the year ended 5 April 2023.

Responsibilities and basis of the report

As the charity trustees of the Trust, you are responsible for the preparation of the accounts in accordance with the requirements of the Charities Act 2011 ('the Act').

I report in respect of my examination of the Trust's accounts as required under section 145 of the 2011 Act and in carrying out my examination I have followed all the applicable Directions given by the Charity Commission under section 145(5)(b) of the Act.

Independent examiner's statement

I have completed my examination. I confirm that no material matters have come to my attention in connection with the examination giving me cause to believe that in any material respect:

1. Accounting records were not kept in respect of the Trust as required by section 130 of the Act; or
2. That accounts do not accord with those records; or
3. That accounts do not comply with the applicable requirements concerning the form and content of accounts set out in the Charities (Accounts and Reports) Regulations 2008 other than the requirement that the accounts give a 'true and fair view' which is not a matter considered as part of an independent examination.

I have no concerns and have come across no other matters in connection with the examination to which attention should be drawn in this report in order to enable a proper understanding of the accounts to be reached.


David Wheeler – Independent Examiner
David Wheeler F.C.C.A
Cheeld Wheeler & Co, Chartered Certified Accountants
Redhill Chambers, 2d High Street, Redhill,
Surrey, RH1 1RJ.

Dated: 4 June 2023

THE SANDCASTLE TRUST
STATEMENT OF FINANCIAL ACTIVITIES
FOR THE YEAR ENDED 5 APRIL 2023

	<u>Notes</u>	<u>Unrestricted</u>	<u>2023</u> <u>Restricted</u>	<u>Total</u>	<u>2022</u> <u>Total</u>
		<u>£</u>	<u>£</u>	<u>£</u>	<u>£</u>
INCOME					
Grants and donations	4	42,128	68,950	111,078	64,392
Other trading activities	5	1,361	-	1,361	60
Interest income		42	-	42	-
TOTAL INCOME		<u>43,531</u>	<u>68,950</u>	<u>112,481</u>	<u>64,452</u>
EXPENDITURE					
Costs of raising funds	6	3,343	-	3,343	2,890
Charitable activities		21,468	28,234	49,702	48,592
Governance costs	7	8,476	-	8,476	11,192
TOTAL EXPENDITURE		<u>33,287</u>	<u>28,234</u>	<u>61,521</u>	<u>62,674</u>
NET (LOSS)/INCOME FOR THE YEAR		<u>10,244</u>	<u>40,716</u>	<u>50,960</u>	<u>1,778</u>
TRANSFERS BETWEEN FUNDS					
		3,304	-3,304	-	-
NET MOVEMENT IN FUNDS		<u>£13,548</u>	<u>£37,412</u>	<u>£50,960</u>	<u>£1,178</u>
RECONCILIATION OF FUNDS					
Total funds brought forward		<u>£7,446</u>	<u>£12,092</u>	<u>£19,538</u>	<u>£17,760</u>
Total funds carried forward		<u>£20,994</u>	<u>£49,504</u>	<u>£70,498</u>	<u>£19,538</u>

THE SANDCASTLE TRUST
STATEMENT OF FINANCIAL ACTIVITIES
FOR THE YEAR ENDED 5 APRIL 2023

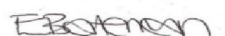
The charity had no recognised gains or losses for the year ended 5 April 2023 other than those included in the Statement of Financial Activities.

The notes on pages 15 to 20 form part of these accounts.

THE SANDCASTLE TRUST
BALANCE SHEET AS AT 5 APRIL 2023

	<u>Notes</u>	<u>2023</u>		<u>2022</u>	
		£	£	£	£
FIXED ASSETS					
Tangible assets	9		33,212		4,288
CURRENT ASSETS					
Debtors		1,003		493	
Bank account		<u>38,083</u>		<u>21,620</u>	
TOTAL CURRENT ASSETS			39,086		22,113
Creditors – amounts falling due within one year			<u>1,800</u>		<u>6,863</u>
NET ASSETS			<u>£70,498</u>		<u>£19,538</u>
The funds of the charity:	8				
Unrestricted			20,994		7,446
Restricted			<u>49,504</u>		<u>12,092</u>
TOTAL CHARITY FUNDS			<u>£70,498</u>		<u>£19,538</u>

Approved by the Trustees on 1 December 2023 and signed on their behalf by:



.....
Eleanor Bateman
Trustee



.....
Luke Brooker
Treasurer

The notes on pages 15 to 20 form part of these accounts.

THE SANDCASTLE TRUST
NOTES TO THE ACCOUNTS FOR THE YEAR ENDED 5 APRIL 2023

1. ACCOUNTING POLICIES

1.1 General Information

The Sandcastle Trust is a Charitable Incorporated Organisation, registered with the Charity Commission in England & Wales (No. 1169523) and the Official Scottish Charity Register (No. SC051645) . The address of the registered office is The Sandcastle Trust, PO Box 873 Haywards Heath, RH16 9QL.

1.2 Basis of Accounting

The statement of accounts has been prepared under the historical cost convention and is in accordance with applicable accounting standards and the Statement of Recommended Practice, Accounting by Charities preparing their accounts in accordance with the Financial Reporting Standard applicable in the UK and Republic of Ireland (FRS 102) and the Charities Act 2011. The charity constitutes a public benefit entity as defined by FRS102.

1.3 Income

Income is accounted for when received by the Trust.

1.4 Grants

Grant income is recognised when there is:

- a) entitlement to the grant,
- b) virtual certainty that it will be received and
- c) sufficient measurability of the amount. Unspent grants are shown on the balance sheet as restricted funds.

1.6 Taxation

As a registered Charity the Trust is exempt from Income Tax and Capital Gains Tax.

1.7 Tangible fixed assets

Depreciation is provided at the following annual rate in order to write off each asset over its estimated useful life.

Office equipment - 25% on cost.

Motor vehicles – 20% on cost.

THE SANDCASTLE TRUST
NOTES TO THE ACCOUNTS FOR THE YEAR ENDED 5 APRIL 2023

2. Transactions with Trustees and Other Connected Persons

No remuneration is paid to the Trustees, but expenses of £264 (2021/22: £308) were reimbursed to two of the trustees and £50 was donated by a Trustee.

3. Related Party Transactions

There were no related party transactions during the course of the year.

4. Income from donations and grants

	<u>2023</u>			<u>2022</u>
	<u>Unrestricted</u>	<u>Restricted</u>	<u>Total</u>	<u>Total</u>
	£	£	£	£
Donations	10,139	-	10,139	9,989
Just Giving	20,149	-	20,149	6,874
Grants	11,840	68,950	80,790	47,529
	<u>£42,128</u>	<u>£68,950</u>	<u>£111,078</u>	<u>£64,392</u>

Funding is acknowledged under the terms and conditions of the following grants:

Funder	Project	Value
Charles F French Charitable Trust	Sandcastle Memories Family Respite (Essex and North London)	£10,000
The Skelton Trust	Sandcastle Memories Family Respite (North West)	£1,000
National Lottery Awards for All England	Sandcastle Memories Family Respite (England)	£10,000
The Pears Foundation	Support Services Coordinator Position	£8,500
The Eveson Trust	Sandcastle Memories Family Respite (West Midlands)	£5,000

THE SANDCASTLE TRUST
NOTES TO THE ACCOUNTS FOR THE YEAR ENDED 5 APRIL 2023

The Sussex Community Foundation	Sandcastle Memories (Sussex)	£4,950
The Clothworkers Foundation	Caravan – Skegness	£10,000
Bernard Sunley Foundation	Caravan - Skegness	£5,000
The Brian Murtagh	Caravan - Skegness	£10,000
National Lottery Awards for All Wales	Caravan - Wales	£10,000
The Rothley Trust	Sandcastle Memories (North East)	£1,000
Albert Hunt Trust	Sandcastle Memories Family Respite	£2,500
Jeans for Genes	Core Funding	£3,340
The Arnold Clark Community Fund	Sandcastle Memories	£1,000

5. Income from other trading activities

	<u>2023</u>		<u>2022</u>
	<u>Unrestricted</u>	<u>Restricted</u>	<u>Total</u>
	£	£	£
Fundraising & Organised Challenges	£1,361	-	£1,361
	£60		

6. Expenditure on Raising Funds

	<u>2023</u>		<u>2022</u>
	<u>Unrestricted</u>	<u>Restricted</u>	<u>Total</u>
	£	£	£
Fundraising Materials	3,343	-	3,343
Events	-	-	1,381
	£3,343	£ -	£2,890

THE SANDCASTLE TRUST
NOTES TO THE ACCOUNTS FOR THE YEAR ENDED 5 APRIL 2023

7. Governance Costs

	<u>Unrestricted</u>	<u>Restricted</u>	<u>2023</u> <u>Total</u>	<u>2022</u> <u>Total</u>
	£	£	£	£
Insurance	217	-	217	290
Bank charges	180	-	180	291
Advertising and marketing	1,947	-	1,947	1,141
Postage and stationery	286	-	286	1,558
Other costs	4,526	-	4,526	1,065
Independent examiner	1,320	-	1,320	600
	£8,476	-	£13,342	£4,945

8. Movement in Funds

	<u>At 6</u> <u>April</u> <u>2022</u> £	<u>Income</u> £	<u>Expenditure</u> £	<u>Transfers</u> £	<u>At 5</u> <u>April</u> <u>2023</u> £
Unrestricted					
General fund	7,446	43,531	-33,287	3,304	20,994
Restricted					
Sandcastle Memories	12,092	25,450	-23,368	-3,304	10,870
Caravan project	0	35,000	0		35,000
Salary Costs	0	8,500	-4,866		3,634
	12,092	68,950	-28,234	-3,304	49,504
Total	£17,760	112,481	-61,521	-	70,498

THE SANDCASTLE TRUST

NOTES TO THE ACCOUNTS FOR THE YEAR ENDED 5 APRIL 2023

9. Fixed Assets

	<u>Office Equipment</u>	<u>Caravan</u>	<u>Total</u>
Cost at 6 April 2022	4525	0	4525
Additions	150	28995	29145
Cost at 5th April 2023	<u>4675</u>	<u>28995</u>	<u>33670</u>
Depreciation at 6 April 2022	237	0	237
Charge in year	40	181	221
Depreciation at 5th April 2023	<u>277</u>	<u>181</u>	<u>458</u>
Net book value 5 April 2023	<u><u>4398</u></u>	<u><u>28814</u></u>	<u><u>33212</u></u>
Net book value 5th April 2022	<u><u>4288</u></u>	<u><u>0</u></u>	<u><u>4288</u></u>

10. Analysis in funds

	<u>Unrestricted</u>	<u>Restricted</u>	<u>2023 Total</u>
	£	£	£
Fixed assets	8,393	24,819	33,212
Debtors	1,003	-	1,003
Cash at bank	13,398	24,685	38,083
Creditors	-1,800	-	-1,800
	<u><u>£20,994</u></u>	<u><u>£49,504</u></u>	<u><u>£70,498</u></u>

THE SANDCASTLE TRUST

NOTES TO THE ACCOUNTS FOR THE YEAR ENDED 5 APRIL 2023

11. Employees

The average number of employees during the year was 1.

12. Volunteers

The charity receives the benefit of work carried out by volunteers. The average number of volunteers during the year was 5.