

# THE SANDCASTLE TRUST

ANNUAL REPORT AND ACCOUNTS  
FOR THE YEAR ENDED 5 APRIL 2021

## CONTENTS

	Page(s)
Reference and Administrative Information	1
Trustees' Report	2–6
Statement of Trustees' Responsibilities	6–7
Independent Examiner's Report to the Trustees	8
Financial statements	9 - 10
Notes to the Financial Statements	10 - 13

**THE SANDCASTLE TRUST**

**REFERENCE AND ADMINISTRATION INFORMATION**

P O Box 873, Haywards Heath, West Sussex, RH16 9QL  
Registered Charity No. 1169523

**Committee of Trustees**

Mrs D. Singleton  
D. Singleton  
L. Dodd  
C. Bateman  
E. Bateman  
I. Bateman  
G Webb (resigned March 2020)  
L Brooker  
M. Holland (appointed September 2020)

**Independent Examiner**

David Wheeler FCCA  
Cheeld Wheeler & Co  
Chartered Certified Accountants  
Goodman House  
13a West Street  
Reigate  
Surrey, RH2 9BL

**Bankers**

CAF Bank  
25 Kings Hill Avenue  
Kings Hill  
West Malling  
Kent, ME19 4JQ

## **THE SANDCASTLE TRUST** **TRUSTEES' REPORT**

The Trustees present their report and the accounts for the year ended 5 April 2021.

### **STRUCTURE GOVERNANCE & MANAGEMENT**

#### **The Sandcastle Trust**

The Sandcastle Trust was formed as a charitable incorporated organisation on 6 October 2016.

#### **Trustees**

Under its Constitution, the activities of the Sandcastle Trust are co-ordinated by a Committee of Trustees whose powers and responsibilities are defined in the Governing Document. The Trustees also decide on the general policy to be adopted in the pursuance of the objectives of the Trust. When the need arises, new trustees will be appointed with regard to their experience and background to further the activities of the Trust. The Committee of Trustees during the financial year being reported on are set out on page 1.

#### **Public Benefit**

The Trustees have complied with the duty to have regard to the public benefit guidance published by the Charities Commission.

### **AIMS, OBJECTIVES AND ACTIVITIES**

The aim of the Sandcastle Trust as stated in our Articles of Association is to help and support families living within the UK whereby a member or members of that family have been diagnosed with a rare genetic condition.

**Mission:** The Sandcastle Trust supports families living with a diagnosis of a rare genetic condition, to build lasting positive family memories, strengthen their family relationships, break down barriers and improve mental health, wellbeing and resilience through the provision of bespoke family respite packages. We call these Sandcastle Memories.

We increase public awareness of the needs and issues that families face when accessing social opportunities; signpost to sources of support and affect positive change through our work.

**Beneficiaries:** A family is eligible for The Sandcastle Trust's support when an individual(s) within it have been diagnosed with a rare genetic condition (single gene inheritance, mitochondrial inheritance or chromosome disorder). The Sandcastle Trust defines rare as a condition that affects less than 5 in 10,000 of the general population. The diagnosis must be clinically evidenced. At least one of the following must also apply:

- (i) The condition is degenerative;
- (ii) The condition is life threatening;
- (iii) The condition is life limiting;
- (iv) The condition results in complex health needs, physical disability and/or learning disabilities that have an enduring impact on their family's choices, ability to access social opportunities and enjoy family life; and/or
- (v) A family has suffered a bereavement as a result of a rare genetic condition.

The Sandcastle Trust supports families where a child, dependent young adult or parent has a diagnosis. Many of the families we support often have multiple family members with the same condition. We work with a wide range of referral partners such as disorder specific charities, regional genetic centres, hospices, health, community and social care organisations. However, families can also self-refer.

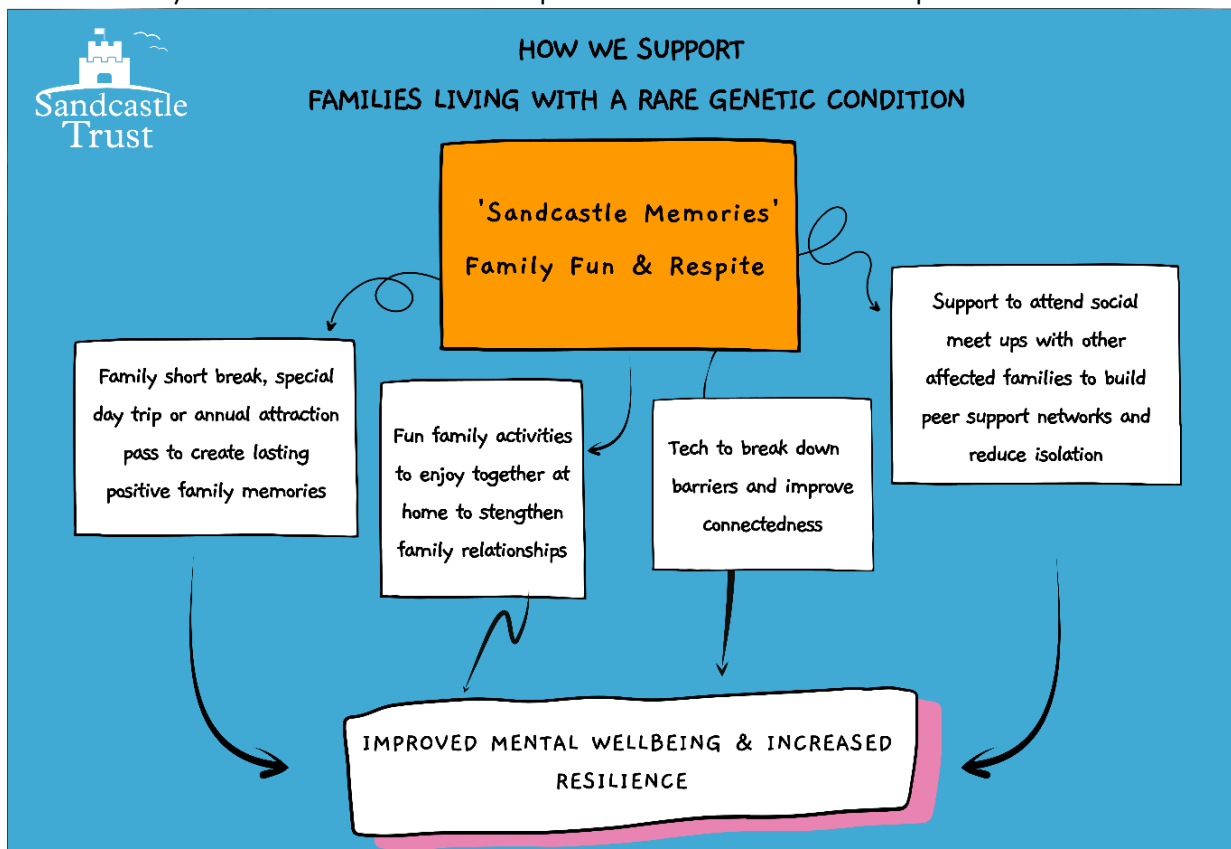
**The Need:** There are approximately 6,000 diagnosed genetic conditions. Each affects less than 0.1% of the UK's population, but together they are one of the greatest causes of disability and early death and affect the lives of 3 million people in the UK (source: National Human Genome Research Institute). Collectively, therefore, they are not rare at all. Symptoms of rare genetic conditions vary but can include physical disability, learning difficulty, mental health and social issues. Caring for a loved one with a genetic condition is emotionally exhausting. It impacts the whole family and as a result the families we support face significant barriers and multiple disadvantages in their lives, in particular mental health issues (72% of our beneficiaries in 2020/21) and isolation (81%). In addition to this 70% of the families had a household annual income of less than £20,000 and 90% told us that the financial implications of their situation meant they found it incredibly difficult to spend quality family time together outside of their day to day routine which has had a detrimental impact on their mental wellbeing.

**Our Support:** The Sandcastle Memories (family respite) we deliver are designed for an affected family to enjoy together, away from their daily routine to refresh and re-energise. Traditionally, Sandcastle Memories have taken the form of a short UK break or where a short break is not suitable, annual passes or one-off special day trips to attractions such as zoos, farms and steam railways so that families can experience regular fun days out together without worrying about the cost implications of a day out having to be cut short.

The medical complexity of the cared-for in the families we support meant that most were in the clinically vulnerable category and shielded for months during the height of the coronavirus pandemic. In March 2020 we temporarily suspended Sandcastle Memories involving travel, consulted our community and diversified our activities to introduce an additional category of support – ‘Sandcastle Memories – At Home.’ Examples of family respite delivered at home include back garden cinema, online Makaton singing sessions, accessible garden play equipment and annual bake box subscriptions that can be enjoyed by the whole family together throughout a year.

During the 2020-21 period, 96% of our family respite was delivered in this way. We envisaged continuing to deliver the respite from home until a successful vaccine programme had been rolled out and shielding ended, but due to the positive feedback received from families and the changing nature of the pandemic, this respite option is now a permanent category of support.

We also provide support to small disorder specific charities and patient groups without a disorder specific charity to arrange family meet ups and fun days together although unfortunately none of these events took place in 2020-21 due to the pandemic.

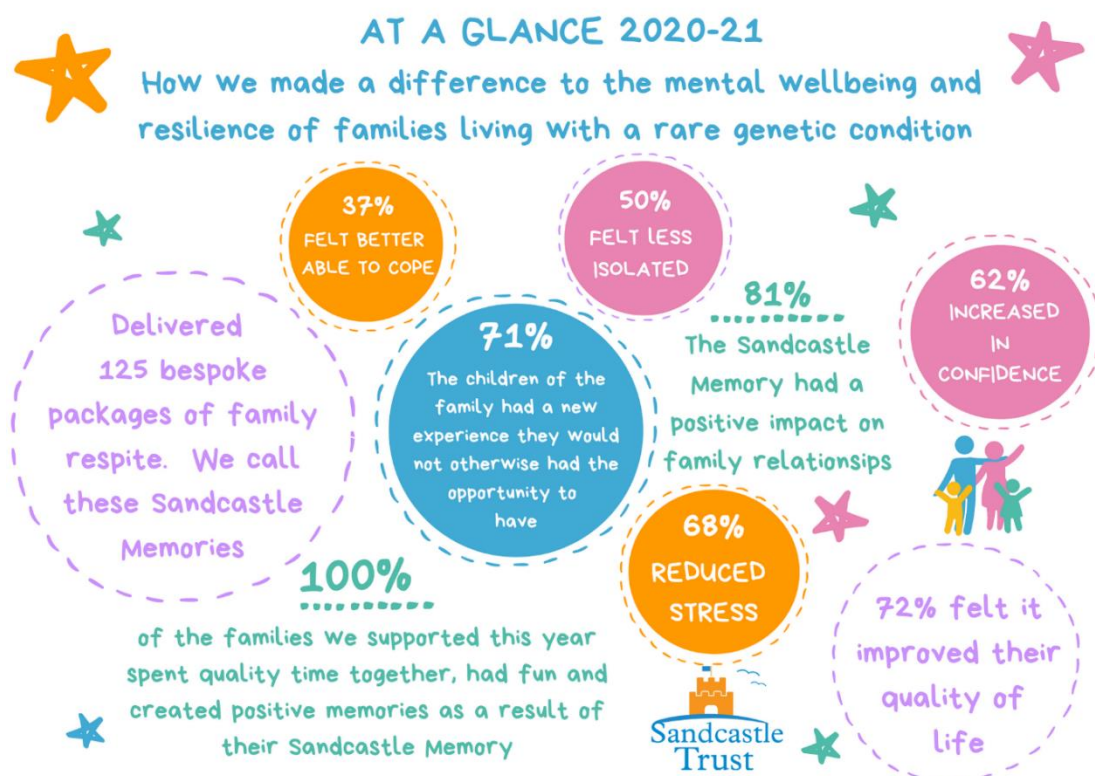


## ACHIEVEMENTS AND PERFORMANCE

Despite the pandemic and resulting restrictions The Sandcastle Trust supported 125 families with a *Sandcastle Memory* in 2020/21.

The impact of Covid-19 on families affected by a rare genetic condition has been immense. Every challenge inherent in living with a rare genetic condition has been exacerbated by covid-19 and the necessary measures taken to contain the pandemic. Support has been slashed and levels of social isolation have increased. We were able to pivot quickly this year to continue to providing family respite to this highly isolated and vulnerable group of families.

We carry out a beneficiary survey throughout the year to help us demonstrate the longer term difference that The Sandcastle Trust makes. The data collected via this survey is summarised in the diagram below and demonstrates the benefits of a Sandcastle Memory are not short lived; it can offer holistic respite for the whole family, improve mental health outcomes, reduce isolation, help carers to maintain their quality of care and generally provides a positive focus which can empower families with a new enthusiasm and strength to deal with ongoing daily struggles of illness, gruelling hospital treatment and sometimes a devastating loss.



## **FINANCIAL REVIEW**

2020/1 was an incredibly challenging year for The Sandcastle Trust. The COVID-19 pandemic created significant operational pressures on the charity and hindered the Trustees Fundraising Activity.

Despite income from our own fundraising activity and organised events declining, we are incredibly grateful to the individuals who took on virtual challenges to fundraise for The Sandcastle Trust this year and the trusts and foundations that have supported our work

The Trustees can report a satisfactory year with income increasing slightly from £38,703 in the prior year to £38,318 with net income increasing from £418 to £7,320. During the year the Trust spent £23,154 on charitable activities, (i.e. the provision of Sandcastle Memories) compared to £28,404 in the previous period. As at 5 April 2021, the Trust had accumulated funds of £17,760 of which £8,380 are restricted funds, leaving free reserves of £9,380.

## **RESERVES POLICY**

The Trustees' policy is to maintain free reserves in unrestricted funds of a minimum of £5,000 in order to ensure that governance costs are covered and that sufficient funds are available to continue the Chanty's current activities in the short term while consideration is given to ways in which additional funds may be raised.

## **STATEMENT OF TRUSTEES' RESPONSIBILITIES**

The trustees are responsible for preparing the Trustees' Annual Report and the financial statements in accordance with applicable law and United Kingdom Accounting Standards (United Kingdom Generally Accepted Accounting Practice).

The law applicable to charities in England and Wales requires the trustees to prepare financial statements for each financial year which give a true and fair view of the state of affairs of the charity and of the income and expenditure of the charity for that period. In preparing these financial statements, the trustees are required to:

- select suitable accounting policies and then apply them consistently;
- observe the methods and principles in the Charities SORP;
- make judgements and estimates that are reasonable and prudent;
- state whether applicable accounting standards have been followed, subject to any material departures disclosed and explained in the financial statements;
- prepare the financial statements on the going concern basis unless it is inappropriate to presume that the charity will continue in operation.



The trustees are responsible for keeping proper accounting records that disclose with reasonable accuracy at any time the financial position of the charity and enable them to ensure that the financial statements comply with the Charities Act 2011, the Charity (Accounts and Reports) Regulations 2008 and the provisions of the trust deed. They are also responsible for safeguarding the assets of the charity and hence for taking reasonable steps for the prevention and detection of fraud and other irregularities.

The trustees are responsible for the maintenance and integrity of the charity and financial information included on the charity's website in accordance with legislation in the United Kingdom, governing the preparation and dissemination of financial statements.

Approved by the Trustees on 25 JANUARY 2022 and signed on their behalf by:



.....  
Danielle Singleton  
Chair



.....  
Luke Brooker  
Treasurer

**THE SANDCASTLE TRUST**  
**INDEPENDENT EXAMINER'S REPORT TO THE TRUSTEES**

I report to the trustees on my examination of the accounts of the Sandcastle Trust for the year ended 5 April 2021.

**Responsibilities and basis of the report**

As the charity trustees of the Trust you are responsible for the preparation of the accounts in accordance with the requirements of the Charities Act 2011 ('the Act').

I report in respect of my examination of the Trust's accounts as required under section 145 of the 2011 Act and in carrying out my examination I have followed all the applicable Directions given by the Charity Commission under section 145(5)(b) of the Act.

**Independent examiner's statement**

I have completed my examination. I confirm that no material matters have come to my attention in connection with the examination giving me cause to believe that in any material respect:

1. Accounting records were not kept in respect of the Trust as required by section 130 of the Act; or
2. That accounts do not accord with those records; or
3. That accounts do not comply with the applicable requirements concerning the form and content of accounts set out in the Charities (Accounts and Reports) Regulations 2008 other than the requirement that the accounts give a 'true and fair view' which is not a matter considered as part of an independent examination.

I have no concerns and have come across no other matters in connection with the examination to which attention should be drawn in this report in order to enable a proper understanding of the accounts to be reached.



.....

David Wheeler – Independent Examiner

David Wheeler F.C.C.A

Cheeld Wheeler & Co , Chartered Certified Accountants

Goodman House, 13a West Street

Reigate, Surrey, RH2 9BL

28 January 2021  
Dated:.....

**THE SANDCASTLE TRUST**  
**STATEMENT OF FINANCIAL ACTIVITIES**  
**FOR THE YEAR ENDED 5 APRIL 2021**

	<u>Notes</u>	<u>Unrestricted</u>	<u>2021</u> <u>Restricted</u>	<u>Total</u>	<u>2020</u> <u>Total</u>
		£	£	£	£
<b>INCOME</b>					
Grants and donations	3	17,323	19,645	36,968	36,815
Other trading activities	4	1,350	-	1,350	1,888
<b>TOTAL INCOME</b>		18,673	19,645	38,318	38,703
<b>EXPENDITURE</b>					
Costs of raising funds	5	2,899	-	2,899	5,887
Charitable activities – Sandcastle Memories		7,290	15,864	23,154	28,404
Governance costs	6	2,405	2,540	4,945	3,994
<b>TOTAL EXPENDITURE</b>		12,594	18,404	30,998	38,285
<b>NET INCOME FOR THE YEAR</b>		<b>£6,079</b>	<b>£1,241</b>	<b>£7,320</b>	<b>£418</b>
<b>RECONCILIATION OF FUNDS</b>					
<b>Total funds brought forward</b>		£3,301	£7,139	£10,440	£10,022
<b>Total funds carried forward</b>		<b>£9,380</b>	<b>£8,380</b>	<b>£17,760</b>	<b>£10,440</b>

The charity had no recognised gains or losses for the year ended 5 April 2021 other than those included in the Statement of Financial Activities.

The notes on pages 11 to 13 form part of these accounts.

**THE SANDCASTLE TRUST**  
**BALANCE SHEET AS AT 5 APRIL 2021**

	<u>Notes</u>	<u>2021</u>		<u>2020</u>	
		£	£	£	£
<b>CURRENT ASSETS</b>					
Debtors		1,350		2,700	
Bank account		<u>17,010</u>		<u>8,550</u>	
<b>TOTAL CURRENT ASSETS</b>			18,360		11,250
Creditors – amounts falling due within one year			<u>600</u>		<u>810</u>
<b>NET ASSETS</b>			<u>17,760</u>		<u>£10,440</u>
<b>The funds of the charity:</b>	<b>7</b>				
Unrestricted			9,380		3,301
Restricted			<u>8,380</u>		<u>7,139</u>
<b>TOTAL CHARITY FUNDS</b>			<u>17,760</u>		<u>£10,440</u>

Approved by the Trustees on 25 JANUARY 2022 and signed on their behalf by:



.....  
Danielle Singleton  
Chair



.....  
Luke Brooker  
Treasurer

The notes on pages 11 to 13 form part of these accounts.

## **THE SANDCASTLE TRUST**

### **NOTES TO THE ACCOUNTS FOR THE YEAR ENDED 5 APRIL 2021**

#### **1. ACCOUNTING POLICIES**

##### **1.1 Basis of Accounting**

The statement of accounts has been prepared under the historical cost convention and is in accordance with applicable accounting standards and the Statement of Recommended Practice, Accounting by Charities preparing their accounts in accordance with the Financial Reporting Standard applicable in the UK and Republic of Ireland (FRS 102) and the Charities Act 2011.

##### **1.2 Income**

Income is accounted for when received by the Trust.

##### **1.3 Grants**

Grant income is recognised when there is:

- a) entitlement to the grant,
- b) virtual certainty that it will be received and
- c) sufficient measurability of the amount. Unspent grants are shown on the balance sheet as restricted funds.

##### **1.4 Gifts in Kind**

The Charity receives the benefit of work carried out by volunteers.

##### **1.5 Taxation**

As a registered Charity the Trust is exempt from Income Tax and Capital Gains Tax.

#### **2. Transactions with Trustees and Other Connected Persons**

No remuneration is paid to the Trustees, but expenses of £76 were reimbursed to one of the trustees.

### 3. Income from donations and grants

	<u>Unrestricted</u>	<u>Restricted</u>	<u>2021</u> <u>Total</u>	<u>2020</u> <u>Total</u>
	£	£	£	£
Donations	1,346	-	1,346	3,430
Just Giving	5,975	-	5,975	20,315
Grants	10,002	19,645	29,647	13,070
	<b><u>£17,323</u></b>	<b><u>£19,645</u></b>	<b><u>£36,968</u></b>	<b><u>£36,815</u></b>

### 4. Income from other trading activities

	<u>Unrestricted</u>	<u>Restricted</u>	<u>2021</u> <u>Total</u>	<u>2020</u> <u>Total</u>
	£	£	£	£
Fundraising & Organised Challenges	<b><u>£1,350</u></b>	-	<b><u>£1,350</u></b>	£1,888

### 5. Expenditure on Raising Funds

	<u>Unrestricted</u>	<u>Restricted</u>	<u>2021</u> <u>Total</u>	<u>2020</u> <u>Total</u>
	£	£	£	£
Fundraising Materials	1,015	-	1,015	1,146
Events	1,884	-	1,884	4,741
	<b><u>£2,899</u></b>	-	<b><u>£2,899</u></b>	<b><u>£5,887</u></b>

## 6. Governance Costs

	<u>Unrestricted</u>	<u>Restricted</u>	<u>2021</u> <u>Total</u>	<u>2020</u> <u>Total</u>
	£	£	£	£
Insurance	290	-	290	-
Bank charges	291	-	291	276
Advertising and marketing	991	150	1,141	747
Postage and stationery	833	725	1,558	2,371
Other costs	-	1,065	1,065	-
Independent examiner	-	600	600	600
	<b>£2,405</b>	<b>£2,540</b>	<b>£4,945</b>	<b>£3,994</b>

## 7. Movement in Funds

	<u>At 6</u> <u>April</u> <u>2020</u>	<u>Income</u>	<u>Expenditure</u>	<u>Transfers</u>	<u>At 5</u> <u>April</u> <u>2021</u>
	£	£	£	£	£
<b>Unrestricted</b>					
General fund	3,302	16,173	-16,622	4,150	7,003
<b>Restricted</b>					
Adamson Trust	932	-	-932	-	-
Barchester Health	180	-	-	-	180
Barnwood	-	2,250	-995	-250	1,005
Brian Murtagh	-	3,250	-	-	3,250
Bruce Wake	1,500	-	-1,500	-	-
Cash 4 Kids	1,878	-	-	-	1,878
Edward Gosling	-	4,000	-477	-	3,523
National Lottery (Connecting communities)	-	2,500	-180	-1,610	710
National Lottery (Gov Covid-19)	-	10,145	-7,855	-2,290	-
Paul Bassham Trust	1,402	-	-1,402	-	-
Surrey Community Foundation	1,246	-	-1,035	-	211
<b>Total</b>	<b>£10,440</b>	<b>£38,318</b>	<b>£30,998</b>	<b>-</b>	<b>£17,760</b>