



# ANNUAL REPORT 2023/2024

Little Edi Foundation

Charity No. 1169242





## A MESSAGE FROM OUR CHIEF EXECUTIVE – TESS GRIGGS

Welcome to our 6/4/23 – 5/4/24 annual report.

We have had another very busy year. An increase in referrals, particularly from Social Services and Social Prescribers (via GP surgeries), resulted in a rise in numbers in our project. We have responded to the individual needs of our families and extended our project work.

We continued to operate from Parkside Community Hub in Melbourne, as this enabled us to be closer to the community we were working in.

It would be impossible to make a note of all of the activities we have carried out this year as there have been so many, but we hope this report gives you an insight into our work in the community.

Thanks must be given to our manager, project leaders, Youth Forum, volunteers, and trustees who enabled us to grow and support the Essex community.

**T. Griggs**



# About Us

## About the Little Edi Foundation

Founded in 2016, the Little Edi Foundation is an Essex based non-profit where children and young people are at the heart of our organisation. Our objective is to help children and young people have equal access to education and learning development, enabling them to reach their full potential.

The Little Edi Foundation responds to community needs across Essex, prioritising supporting families who are most vulnerable. Referred families receive a home visit from one of our team who assess their financial and emotional support needs. As can be seen from this report, support is delivered via a number of ways, including food boxes, support groups, courses, and trips. In addition, we have a Youth Forum, which provides volunteering opportunities for young people, including those who are disengaged, which enables them to learn key skills and build their confidence.





# Fundraising

This year we secured grants and/or donations to fund our work, including from the following organisations:

- Albert Hunt Trust
- Chelmsford Ladies Circle
- Cunningham family
- Direct Commercial Limited
- Essex Community Fund
- Essex County Council
- Essex Freemasons
- Hutchinson MJE
- John Lewis Charitable Fund
- Just Giving
- Local Giving
- Morrisons
- Multiply
- Rotary Phoenix

In addition, we received the most generous donations from individuals, schools, churches, and businesses.

We continued to benefit from the winning streak of Rebel Racing's racehorse called "Little Edi", as we received the owners' winnings.

### **Boreham Boot sale**



Project leaders and their children were up at 5am to get ready to sell donated items at the Boreham boot fair in the summer. They worked really hard and managed to raise £148 for our food bank and community projects.

### **Charity Race Night**

We hosted a charity race night at a local pub to raise money for our projects. We invited our supporters, friends, family – and those already in the pub – to join us in making bets on the horse racing and buying raffle tickets. The night was enjoyed by all and successfully raised funds for our project.





# Community Projects

Poverty continues to have a profound impact on the children and young people in our communities across Essex and as they are at the heart of the organisation, our Community Projects aim to improve their health, social, and mental well-being. We recognise we need to support them as a group of families rather than just individuals, to give them a sense of community.

To respond to community members urgently in need of our support we have been:

- Conducting home visits to talk to the parents so we can fully understand that support they need.
- Regularly supplying and distributing fresh and dry food parcels and hygiene packs (and providing emergency supplies where needed).
- Helping families with their utility bills to ensure they have heating and electricity.
- Providing school uniform including garments with school logos, Clark's school shoes, school bags and supplies for children returning to school (please see below for more information).
- Providing support at Christmas time including providing presents, parties, and delivering turkey hampers full of everything necessary to make a Christmas dinner including crackers and extras.
- Organising "community based" projects to bring them all together as families.

## Community projects Continued

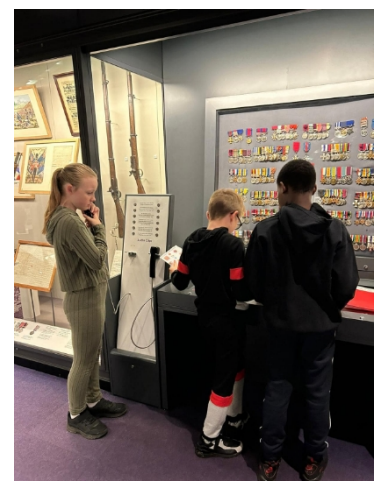
### Coffee Mornings

We have continued to hold our coffee mornings once a month in a local church hall. This event remains an important part of our projects, as it gives us a chance to engage with our families and children. We are able to listen to them and give support, advice, and guidance.

Before the event, we order fresh fruit and vegetables so every family in the project can take some home with them. Families also have the opportunity to browse the donated clothes, books, food, and toiletries, and children are occupied by the art and craft activities set up around tables. And of course it wouldn't be a coffee morning without some refreshments!

### After School club

We have continued to host an after school club every Wednesday during term time from 4:30pm-6pm in a local church hall. The most vulnerable children in our project are invited to attend, and the invite list is rotated to give as many children as possible the chance to come. The children enjoy a wide range of activities, such as crafts, petting animals, playing games, and a picnic in the garden. This year the after school club has also treated the children to trips, including to paint ceramics, the cinema, Chelmsford Museum and Marsh Farm.





# Community projects Continued

## Baby and Toddler Group

This year we launched our baby and toddler group, which we hold every Wednesday in a church hall and invite children in our project aged 0-4 years old to attend. This is not only to allow the children to come to play and socialise, but it gives their carers the chance to meet up with other people with children of a similar age and, hopefully, have a moment to take a breath!

## Courses

Our families were offered the opportunity via Multiply to attend courses including budgeting and cooking on a budget.

The budgeting course covered:

- creating a household budget
- finding an energy supplier
- understanding and challenging bills
- comparing the price of food and other household goods
- deciding between bank accounts

The cooking course covered:

- learning how to feed the whole family with tasty and affordable meals.
- budgeting tips you can apply in the kitchen.
- learning how to cook homemade meals on a reduced budget.
- practical lessons on cooking.





## Community projects Continued

### Easter

This year our Youth Team help set up and run our monthly coffee morning, which nicely coincided with Easter. The children had great fun finding all the eggs hidden in the garden, enjoyed activities set up on tables, were able to each pick a book that had been donated by a local school, and took home a goodie bag. We also run a successful raffle, with the proceeds going towards our projects.

### Summer Scheme

This year we had three fantastic days out with the children in our project.

Those children aged between 4 and 8 years old were taken, together with members of our Youth Forum, volunteers, and our Project Leaders, by coach to Marsh Farm. Here the children enjoyed a fun day looking at the animals and enjoying the activities at the Farm. Every child enjoyed a picnic and a drink, as their family had been given a supermarket voucher to buy the items.

Those children aged between 8 and 12 years old were taken, together with a “buddy” from the Youth Forum, volunteers, and our Project Leaders, by coach to Frinton-on-Sea to enjoy a memorable day out at the beach. The children found great amusement playing with beach toys, cricket, kites, footballs, shell collecting, and of course having a paddle. The children also enjoyed a sandcastle competition and created some amazing designs. Again, we gave every family of a child going on the trip a supermarket voucher so they could buy lunch and a drink.

Our last day out was to a local park where families could enjoy a picnic whilst members of the Youth Forum and volunteers kept the children entertained with games.



# Community projects Continued

## October half term

For those children who needed a little extra support, we had two wonderful days at a local school where they enjoyed lots of activities, sports, and play. Members of the Youth Forum buddied up with the young children and helped run the activities with much enthusiasm and energy.

## Harvest Festival

With help from many local schools and organisations, together with many individual donations, we were able to stock our food cupboards for Harvest Festival.

## Gaming bus

We hired a gaming bus so twelve of our older children could enjoy two hours of uninterrupted gaming. The children chose from a vast range of games on Xbox, PS5, Switch, a racing simulator and gaming PC.



## Community projects Continued

As a charity we understand that winter - and especially Christmas time - can be a challenging time of year for our families, both financially and emotionally. We try to take away as much of this burden as we can.

Below are several initiatives we ran over the winter period:

### **Reverse advent calendar**

Due to the success of the reverse advent calendars last year, we decided to ask our supporters for these again and we were not disappointed. This meant that every family received a box full of useful items for the Christmas period.



### **Pyjamas and coats**

Families at a local school were invited to take a label from one of the gift trees and buy pyjamas for a child in our project. Families also donated coats, which were laid out at one of the coffee mornings, so that each child within the project had a coat to see them through the cold months.





## Community projects Continued

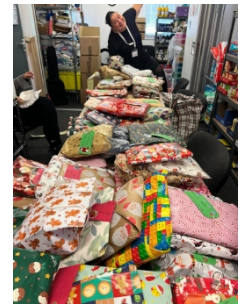
### Christmas Lunch

With the help of many supporters and the Youth Forum, we delivered to all our families a fresh turkey, all the trimmings, and a dessert, for Christmas dinner.



### Presents

The young children in our project were given a present and a box containing toys, art and crafts, and toiletries. The older children received a voucher and a bag of goodies.



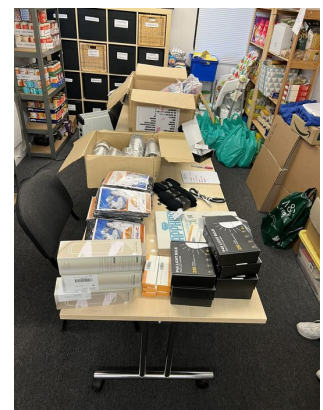
### Christmas party

The children had a wonderful Christmas party organised by the Youth Forum. They enjoyed games and food and had a visit from Father Christmas who gave them a present. The children also received an advent calendar, sweets, and balloons.



### Winter Essentials

Due to the success of last year's winter essentials initiative, we repeated it this year. Families were given a bag containing winter essentials including lightbulbs, socks, thermals, flasks, doorstops, thermometers, and hygrometers. New families to our project received a bumper bag to help them through the colder months.



## Community projects Continued

### Help with utility bills

When we asked the parents in our project if they needed help with their gas and/or electricity bills, 98% had £5 or less on their meters, or had gone onto an emergency supply. We therefore gave each family £50 to put on their meters in December, January, and February, to help them to keep the heating on during the coldest time of year.

### Pantomime

We took thirty-two very excited children to see Jack and the beanstalk at the local theatre. For many this was the first time in a theatre and the first time they had seen a pantomime. They all enjoyed dancing and singing along and shouting and booing in all the right places!





Uniform and school supplies continue to be very expensive and many of our families cannot afford such items. We have therefore maintained our school uniform project, with each child receiving a new pair of school shoes and items of branded school uniform. In addition, we have provided school equipment where needed. With the kind donation from a local organisation, children at secondary school received a laptop and we purchased a printer for each of them.

These items are really important to the children, as it makes them feel the same as their peers and helps them to reach their full potential.







Our organisational objective is to help children and young people, enabling them to reach their full potential. One of the ways we achieve this is to provide volunteering opportunities for local young people, including those who have become disengaged, aged 13 – 18, which enables them to learn key skills and builds their confidence to take on new challenges.

Some of the Youth Forum activities:

- Helped to set up coffee mornings and run the activities.
- Looked after a child during our summer scheme.
- Looked after a child during our October half term scheme.
- Helped to fill, label, and deliver Christmas boxes to the families.
- Organised and ran the Easter and Christmas parties for the children.

# Meet The Trustees



Tess Griggs



Sarah Bonamy



Sheryl Perry

## The Trustees

The Little Edi Foundation are a team of unpaid volunteers - their time and knowledge come at no expense to the charity - all the donations and funds raised go straight to the charity.

They take responsibility for using the resources efficiently, achieving measurable results and being accountable to the supporters, partners, people, and most of all, the children, with whom the charity work with.

(Joe Land was a trustee during the period covered by this report and resigned in October 2023.)

|  |  |
|--|--|
| Principal address:                                   | 585 Galleywood Road<br>Chelmsford<br>CM2 8BS   |
| Type of governing document:                          | Constitution adopted 19 <sup>th</sup> September 2016 and amended on 27 <sup>th</sup> June 2022.  |
| How the charity is constituted:                      | CIO - Foundation   |
| How trustees are appointed:                          | Trustees are appointed in trustee meetings.  |
| Brief statement of the charity's policy on reserves: | The charity has a reserve of £10,000 for reasons such as to fund any unforeseen expenditure, unforeseen day-to-day operational costs, and short-term deficits. |
| Details of any funds materially in deficit:          | None.  |

The trustees declare that they have approved the trustees' report above.

Signed on behalf of the charity's trustees

Signature:

Full name: Tess Griggs

Position: Chair

Date: 3<sup>rd</sup> February 2025





# Profit and Loss

Little Edi Foundation

For the year ended 31 March 2024

Cash Basis

|  | 2024               | 2023               |
|--|--------------------|--------------------|
| <b>Gross Profit</b>                                  | -                  | -                  |
| <b>Administrative Costs</b>                          |                    |                    |
| Amazon purchases                                     | 2,627.29           | -                  |
| Charity subscriptions                                | 446.00             | -                  |
| Clothing   | -                  | 5,910.00           |
| Courses/activities                                   | 25,272.26          | 33,111.00          |
| Donations  | -                  | 896.00             |
| Entertainment-100% business                          | 284.30             | -                  |
| Food Purchased                                       | 11,309.33          | 3,186.00           |
| Insurance  | 460.58             | 456.00             |
| IT Software and Consumables                          | -                  | 482.00             |
| Light, Power, Heating                                | 409.44             | 335.00             |
| Motor Vehicle Expenses                               | 3,869.71           | 4,550.00           |
| Printing & Stationery                                | 82.78              | 95.00              |
| Project Help   | 1,541.37           | -                  |
| Project/activity taxis                               | 1,426.87           | -                  |
| Rent   | 7,231.71           | 8,495.00           |
| Rounding   | 9.52               | -                  |
| Sundry   | -                  | 944.00             |
| Telephone & Internet                                 | 100.66             | -                  |
| Travel - National                                    | -                  | 1,090.00           |
| Utilities Help                                       | 5,392.48           | -                  |
| Wages  | 23,770.66          | -                  |
| <b>Total Administrative Costs</b>                    | <b>84,234.96</b>   | <b>59,550.00</b>   |
| <b>Operating Profit</b>                              | <b>(84,234.96)</b> | <b>(59,550.00)</b> |
| <b>Other Income</b>                                  |                    |                    |
| Charitable and Political Donations                   | 47,376.84          | 96,554.00          |
| <b>Total Other Income</b>                            | <b>47,376.84</b>   | <b>96,554.00</b>   |
| <b>Profit on Ordinary Activities Before Taxation</b> | <b>(36,858.12)</b> | <b>37,004.00</b>   |
| <b>Profit after Taxation</b>                         | <b>(36,858.12)</b> | <b>37,004.00</b>   |

# Balance Sheet

Little Edi Foundation

As at 31 March 2024

Cash Basis

|  | 31 MAR 2024      | 31 MAR 2023      |
|--|------------------|------------------|
| <b>Current Assets</b>                        |                  |                  |
| Cash at bank and in hand                     |                  |                  |
| 200 CLUB                                     | 7,868.28         | 8,976.48         |
| Little Edi Account 1                         | 28,464.63        | 64,241.55        |
| <b>Total Cash at bank and in hand</b>        | <b>36,332.91</b> | <b>73,218.03</b> |
| <b>Total Current Assets</b>                  | <b>36,332.91</b> | <b>73,218.03</b> |
| <b>Net Current Assets (Liabilities)</b>      | <b>36,332.91</b> | <b>73,218.03</b> |
| <b>Total Assets less Current Liabilities</b> | <b>36,332.91</b> | <b>73,218.03</b> |
| <b>Net Assets</b>                            | <b>36,332.91</b> | <b>73,218.03</b> |
| <b>Capital and Reserves</b>                  |                  |                  |
| Current Year Earnings                        | (36,858.12)      | 37,004.00        |
| Retained Earnings                            | 73,191.03        | 36,214.03        |
| <b>Total Capital and Reserves</b>            | <b>36,332.91</b> | <b>73,218.03</b> |

*Sarah Bonamy*

SARAH BONAMY

4/2/25



Section A

Independent Examiner's Report

Report to the trustees/  
members of

Charity Name  
The Little Edi Foundation

On accounts for the year  
ended

31 March 2024 (5 April 2024)

Charity no  
(if any)

1169242

Set out on pages

1 & 2

I report to the trustees on my examination of the accounts of the above charity ("the Trust") for the year ended 31/03/2024.

Responsibilities and  
basis of report

As the charity trustees of the Trust, you are responsible for the preparation of the accounts in accordance with the requirements of the Charities Act 2011 ("the Act").

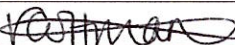
I report in respect of my examination of the Trust's accounts carried out under section 145 of the 2011 Act and in carrying out my examination, I have followed the applicable Directions given by the Charity Commission under section 145(5)(b) of the Act.

Independent  
examiner's statement

I have completed my examination. I confirm that no material matters have come to my attention in connection with the examination which gives me cause to believe that in, any material respect:

- accounting records were not kept in accordance with section 130 of the Act or
- the accounts do not accord with the accounting records

I have no concerns and have come across no other matters in connection with the examination to which attention should be drawn in order to enable a proper understanding of the accounts to be reached.

Signed: 

Date: 31/2/2025

Name: Vicky Coffman

Relevant professional  
qualification(s) or body  
(if any):

ACCA

Address:

Viewpoint Accountants Ltd  
Saxon House, 27 Duke St  
Chelmsford, CM1 1HT

Section B

Disclosure

Only complete if the examiner needs to highlight matters of concern (see CC32, Independent examination of charity accounts: directions and guidance for examiners).



Give here brief details of any items that the examiner wishes to disclose.