



# ANNUAL REPORT 2022/2023

Little Edi Foundation

Charity No. 1169242





## A MESSAGE FROM OUR CHIEF EXECUTIVE – TESS GRIGGS

Welcome to our 22/23 Annual report.

This year has been a year of growth. Our income rose due to grant funding, generous business links and donations from supporters.

Community wise, due to the cost-of-living crisis we saw a 62% rise in professional referrals in our services.

Our move to Parkside Hub Melbourne allowed us to work in the heart of our community vastly expanding our services and activities.

Thanks must be given to our Trustees, staff, Youth Forum and volunteers, who enabled us to grow and support the Essex community.

**T. Griggs**





# About Us

## About the Little Edi Foundation

Founded in 2016, the Little Edi Foundation is an Essex based non-profit where children and young people are at the heart of the organisation. Our organisational objective is to help children and young people have equal access to education and learning development, enabling them to reach their full potential. One of the ways we achieve this is to provide volunteering opportunities for disengaged young people from Essex, which enables them to learn key skills and build their confidence to take on new challenges.

During the pandemic, the Little Edi Foundation responded to community needs across Essex, prioritising supporting families from Essex, who are most vulnerable to the virus and its impacts.

These families lacked the financial and emotional support we felt was needed and so we launched our community projects – which continue to grow, develop, and thrive.



Using the knowledge gained in the 2021/2022 grant writing course, this year we concentrated on using the skills to create successful grant outcomes, as a direct result of this we managed to secure grants from the following organisations:

- Morrisons Supermarket
- Masonic Charitable Foundation
- Essex County Council
- Albert Hunt Trust
- Essex Community Fund
- John Lewis Plc
- Chelmsford Round Table
- Rotary Club
- Ladies Circle



Presentation at The  
Masonic Hall Shenfield



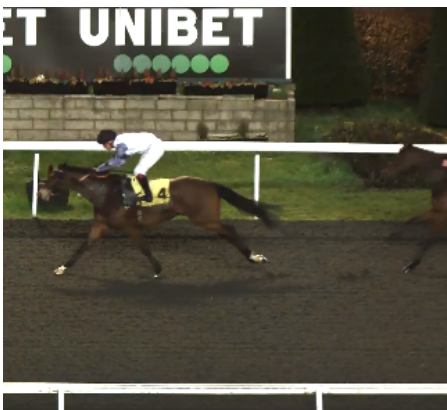
## Fundraising continued

- E.C.C. winter warmer
- Essex Association
- E.C.C. winter grant
- Barratt Development
- Global Essence
- Viewpoint Accountants
- Cunningham LEF horse
- Widford Parish
- St Paul's Parish
- The Essex Alliance



Children's Club helped by  
Morrisons Grant

On top of the grants obtained we also received the most generous donations from individuals and businesses. A special mention needs to be made for Rebel Racing, who named a racehorse “Little Edi” and donated all the owners’ winnings.



← “Little Edi” winning  
their second Race

Tess and Jockey Hayley Turner →





# Community Projects

As children and young people are at the heart of the organisation, our Community Projects aim to reduce the ongoing detrimental impact of COVID-19 to the health, social and mental well-being of children and young people in our communities across Essex. We recognised we needed to support them as a group of families rather than just individuals, to give them a sense of community.

To respond to community members urgently in need of our support we have been:

Regularly supplying and distributing fresh and dry food parcels and hygiene packs (and providing emergency supplies where needed).

Providing school uniform including garments with school logos, Clark's school shoes, school bags and supplies for children returning to school (please see below for more information).

Delivering turkey hampers full of everything necessary to make a Christmas dinner including crackers and extras to all the families in the project.

Organising "community based" projects to bring them all together as families.



## Community projects Continued

### Coffee Mornings

Once a month a Coffee Morning is held in the local church hall.

Fresh fruit and vegetables are ordered in for every family in the project invited to attend. Donated clothes for adults and children, books, food, and toiletries are laid out for families to choose from. Tables are set up with art and craft supplies to occupy the children, enabling the adults the opportunity to chat to other parents in the project. Refreshments are provided for everyone. This event has become an important part of the project, as it gives us a chance to engage with our families and children and listen to them. We often have a guest from other local charities and support systems to provide advice and assistance where necessary.



New books and Stocking fillers available for the families at our coffee mornings

### Washing Machine

Our brand-new washing machine arrived thanks to the generosity of the company Smol. Parents in our project now have full access to this with washing detergent and softener supplied and the use is completely free of charge. We ensure no family struggles with laundry due to broken machines, or because they have no money for the meter or detergent.

Waiting for the clothes to wash gives parents the opportunity to chat, and many have wanted to volunteer at the same time.



# Community projects Continued

## Courses

Our families have been offered the opportunity via Multiply to attend courses including budgeting and cooking on a budget. Those that completed both courses were rewarded for their time and effort with either a new slow cooker or air fryer, thereby putting their newly learned skills into action.

The budgeting course covered:

- creating a household budget
- finding an energy supplier
- understanding and challenging bills
- comparing the price of food and other household goods
- deciding between bank accounts



The cooking course covered:

- learning how to feed the whole family with tasty and affordable meals.
- budgeting tips you can apply in the kitchen.
- learning how to cook homemade meals on a reduced budget.
- practical lessons on cooking.



Additional courses offered to our families were:

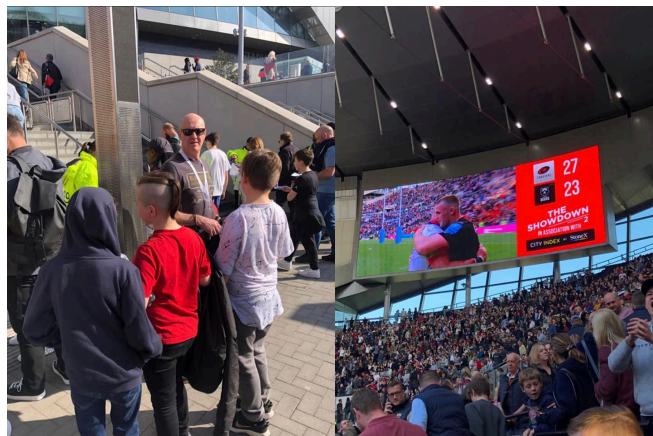
- Coping with anxiety
- Managing an abusive relationship



## Community projects Continued

### Rugby trip

A group of parents, children, and volunteers joined Chelmsford Rugby Club as their guests for the day to watch Saracens vs Bristol at Tottenham Hotspurs stadium. All the children had an amazing day out and received goody bags and food as part of their day. The money for this trip was raised by Chelmsford Rugby Clubs U13's squad.



## Community projects Continued

CHP Chelmsford Housing Partnership were generous enough to offer us a volunteer day – they came for a site visit at the unit and fixed the office panelling and painted it too. They also installed the washing machine, removed a sink, built shelves, filled in holes in the walls and generally gave the unit a spruce up. We were exceptionally grateful for all their team's volunteered hours to help us make the unit a more comfortable environment for our team and the families we support.





## Community projects Continued

As a charity we understand that winter - and especially Christmas time - can be a challenging time of year for our families, both financially and emotionally. We try to take away as much of this burden as we can.

Below are several initiatives we ran over the winter period:

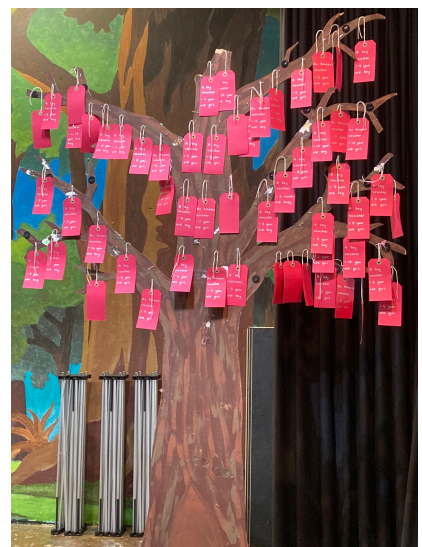
### Reverse advent calendar

As part of our ongoing fund and resources raising, we decided to try reverse advent calendars instead of asking for donations - these were a huge hit with our sponsors resulting in every family being able to be given a box full of useful items for the Christmas period.



### Widford Lodge

Families at Widford Lodge School were invited to take a label from one of the gift trees and buy either a toy voucher, an Amazon voucher, or a supermarket voucher. Vouchers were then collected and distributed to families within the project. Families also donated coats, which were laid out at one of the coffee mornings, so that each child within the project had a coat to see them through the cold months. A couple of months later, the families of Widford Lodge School donated items for our bed poverty campaign, which included pillows, duvets, covers, and blankets.



## Community projects Continued

### Christmas Lunch

With the help of many supporters, we delivered all our families a fresh turkey and all the trimmings for Christmas dinner thanks to the Phoenix Rotary club Chelmsford.

Some of our Youth Forum, who had broken up from school early, came to help by packing the boxes and taking them to volunteers' cars.



### Presents

All children received a present, with older children receiving a voucher. Stocking fillers were set out on tables at the last coffee morning and parents were invited to fill their own children's stockings.



### Parties

We held two Christmas parties, one was organised by the Youth Forum, and another was sponsored by Morrisons.

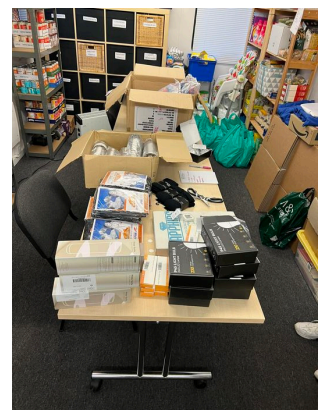
### Christmas biscuit treat

All families received a Christmas biscuits treat from Cake Initiative, which put a smile on many faces.



### Winter Essentials

Families were given a bag containing winter essentials including lightbulbs, socks, thermals, flasks, doorstops, thermometers, and hygrometers. In addition, we distributed donated electric blankets and extra food hampers to families with the greatest need.





## Community projects Continued

### Award Ceremony

An awards ceremony was held at Hatfield Peverel Village Hall to say thanks to all the volunteers and supporters of the Little Edi Foundation. Without them we would not be able to run the day-to-day activities to help the community.

Churches, businesses, and adult and youth volunteers were all nominated and present as well as the Deputy Mayor and Mayoress of Chelmsford.





Due to the impact of local children missing education opportunities during lockdown, the Little Edi Foundation launched its first ever Summer School in July 2020. Due to its success we decided to make it an annual event. We offered the children on our project aged 3-13 years old 1:1 tuition with an experienced schoolteacher offering them the opportunity to go over any areas of difficulty. In addition, during the Summer School the children were able to partake in activities including sports, mindfulness, arts and crafts, an animal petting zoo, a trip to the seaside, and picnic and play events.



All children were offered transport, and packed lunches were all paid for by our local sponsor.





Following feedback from our families in 2020, research showed there is very limited financial support in Essex for school uniform, for example, statutory grants are only available in exceptional circumstances.

To better support local children and young people, we set up a school uniform project to raise funds and provide emergency financial support for those in need. This year we have successfully raised sufficient funds to buy new school uniform for all the children in our project - including shoes. This is especially important to the children, as it makes them feel the same as their peers and helps them to reach their full potential.





# Youth Development

Our organisational objective is to help children and young people, enabling them to reach their full potential. One of the ways we achieve this is to provide volunteering opportunities for disengaged young people from Essex, which enables them to learn key skills and builds their confidence to take on new challenges.

We continue to create new opportunities for disadvantaged and disengaged young people to get involved in social action. Some of the activities volunteered for:

- Each member of our Youth Forum took care of a child at summer school.
- Helped fill, label, and deliver Christmas boxes to the families.
- Assisted at coffee mornings and activities.
- Organised activities to raise money for all children in the project to receive advent calendars.
- Organised and ran Easter and Christmas parties for the children.





# Meet The Trustees



Tess Griggs



Sarah Bonamy



Joshua Brown



Sheryl Perry



Jo Land

## The Trustees

The Little Edi Foundation are a team of unpaid volunteers - their time and knowledge come at no expense to the charity - all the donations and funds raised go straight to the charity.

They take responsibility for using the resources efficiently, achieving measurable results and being accountable to the supporters, partners, people, and most of all, the children, and communities with whom the charity work with.



## Receipts and payments accounts

CC16a

For the period  
from

01/04/2022

To

31/03/2023

### Section A Receipts and payments

	Unrestricted funds	Restricted funds	Endowment funds	Total funds	Last year
	to the nearest £	to the nearest £	to the nearest £	to the nearest £	to the nearest £
<b>A1 Receipts</b>					
Donations	59,165	-	-	59,165	31,594
Fundraising	959	-	-	959	4,029
DBS Contributions	-	-	-	-	-
Aid Trip Contributions	-	-	-	-	-
Grants	36,430	-	-	36,430	19,627
AR)	96,554	-	-	96,554	55,250
<b>A2 Asset and investment sales, (see table).</b>					
	-	-	-	-	-
	-	-	-	-	-
Sub total	-	-	-	-	-
Total receipts	96,554	-	-	96,554	55,250
<b>A3 Payments</b>					
Stationery	95	-	-	95	856
DBS Checks	-	-	-	-	-
Event Costs	-	-	-	-	-
Aid	33,111	-	-	33,111	16,888
Clothing	5,910	-	-	5,910	6,507
Donations	680	-	-	680	-
Just Givin Costs	216	-	-	216	216
Promotional material	-	-	-	-	-
Insurance	456	-	-	456	389
Motor	4,503	-	-	4,503	4,076
Parking	47	-	-	47	28
Professional	-	-	-	-	-
Purchases	3,186	-	-	3,186	1,761
Rent	8,495	-	-	8,495	6,367
Light & Heat	335	-	-	335	607
Repairs	-	-	-	-	2,267
Sundry	944	-	-	944	213
Computer	482	-	-	482	126
Training	-	-	-	-	-
Travel	1,090	-	-	1,090	799
Sub total	59,550	-	-	59,550	41,100
<b>A4 Asset and investment purchases, (see table)</b>					
	-	-	-	-	-
	-	-	-	-	-
Sub total	-	-	-	-	-
Total payments	59,550	-	-	59,550	41,100
Net of receipts/(payments)	37,004	-	-	37,004	14,150
A5 Transfers between funds	-	-	-	-	-
A6 Cash funds last year end	36,187	-	-	36,187	22,037
Cash funds this year end	73,191	-	-	73,191	36,187



## Section B Statement of assets and liabilities at the end of the period

Categories	Details	Unrestricted funds to nearest £	Restricted funds to nearest £	Endowment funds to nearest £
B1 Cash funds	Current Account	64,215	-	-
	Current Account	8,976	-	-
	Cash		-	-
	<b>Total cash funds</b>	<b>73,191</b>	<b>-</b>	<b>-</b>

(agree balances with receipts and payments account(s))

	Details	Unrestricted funds to nearest £	Restricted funds to nearest £	Endowment funds to nearest £
B2 Other monetary assets		-	-	-
		-	-	-
		-	-	-
		-	-	-
		-	-	-
		-	-	-

	Details	Fund to which asset belongs	Cost (optional)	Current value (optional)
B3 Investment assets			-	-
			-	-
			-	-
			-	-
			-	-

	Details	Fund to which asset belongs	Cost (optional)	Current value (optional)
B4 Assets retained for the charity's own use			-	-
			-	-
			-	-
			-	-
			-	-
			-	-
			-	-
			-	-
			-	-
			-	-

	Details	Fund to which liability relates	Amount due (optional)	When due (optional)
B5 Liabilities	Tess Griggs		-	
			-	
			-	
			-	
			-	

Signed by one or two trustees on behalf of all the trustees

Signature

Print Name

Date of approval

*Sarah Bonamy*

SARAH BONAMY

28/2/24



# CHARITY COMMISSION FOR ENGLAND AND WALES

## Independent examiner's report on the accounts

Section A

### Independent Examiner's Report

Report to the trustees/  
members of

Charity Name  
The Little Edi Foundation

On accounts for the year  
ended

31<sup>st</sup> March 2023

Charity no  
(if any)

1169242

Set out on pages

1 & 2

(remember to include the page numbers of additional sheets)

I report to the trustees on my examination of the accounts of the above charity ("the Trust") for the year ended **31 / 03 / 2023**.

Responsibilities and  
basis of report

As the charity trustees of the Trust, you are responsible for the preparation of the accounts in accordance with the requirements of the Charities Act 2011 ("the Act").

I report in respect of my examination of the Trust's accounts carried out under section 145 of the 2011 Act and in carrying out my examination, I have followed the applicable Directions given by the Charity Commission under section 145(5)(b) of the Act.

Independent  
examiner's statement

I have completed my examination. I confirm that no material matters have come to my attention (~~other than that disclosed below \*~~) in connection with the examination which gives me cause to believe that in, any material respect:

- accounting records were not kept in accordance with section 130 of the Charities Act or;
- the accounts do not accord with the accounting records
- the accounts did not comply with the applicable requirements concerning the form and content of accounts set out in the Charities (Accounts and Reports) Regulations 2008 other than any requirement that the accounts give a 'true and fair' view which is not a matter considered as part of an independent examination.

I have no concerns and have come across no other matters in connection with the examination to which attention should be drawn in order to enable a proper understanding of the accounts to be reached.

*\* Please delete the words in the brackets if they do not apply.*

Signed:

Date: 28/02/24

Name:

John Charman

Relevant professional  
qualification(s) or body  
(if any):

ACA

Address:

Unit 3A, Thames Enterprise Centre

Princess Margaret Road

East Tilbury, Essex, RM18 8RH



Only complete if the examiner needs to highlight matters of concern (see CC32, Independent examination of charity accounts: directions and guidance for examiners).

**Give here brief details of any items that the examiner wishes to disclose.**