



2020- 2021

# ANNUAL REPORT







# FOREWORD

## A message from our Director, Tess Griggs

Welcome to our 2020/2021 Annual Report- this year has been particularly difficult for everyone, and I am extremely proud to be able to share with you everything we have achieved at the Little Edi Foundation to help our local community through the COVID-19 pandemic.

Due to restrictions caused by COVID-19, fundraising has been almost impossible having a severe impact on our income. Although our annual income has reduced by 25%, we have been awarded over £15,000 from a number of grant-giving organisations. Thanks to this, and the generous donations of our fantastic supporters, we have been able to provide vital support to our local community through our COVID-19 Community Relief Programme.

I am proud of the difference we have made to the lives of local families this year, and continue to make across our local community - none of this would have been possible without our amazing and hard- working team of volunteers, Youth Team and Trustees. Thank you!



## About the Little Edi Foundation

Founded in 2016, the Little Edi Foundation is an Essex based non-profit where children and young people are at the heart of the organisation. Our organisational objective is to help children and young people have equal access to education and learning development, enabling them to reach their full potential. To achieve this, we provide volunteering opportunities for disengaged young people from Essex, to learn key skills and building their confidence to take on new challenges.

Since the outbreak of COVID-19 in the UK, the Little Edi Foundation has worked quickly and tirelessly to respond to community needs across Essex. We have rapidly adapted our activities to prioritise supporting children and young people from Essex, who are most vulnerable to the virus and its impacts.

Since March 2020, we have and continue to respond to vital community needs through our COVID-19 Community Relief Programme. This includes supplying and distributing parcels of food and other essential items and working to counteract the negative impact the pandemic has had on our local children's education.





# COMMUNITY RELIEF

As children and young people are at the heart of the organisation, our **COVID-19 Community Relief Programme** aims to reduce the detrimental impact of COVID-19 to the health, social and mental well-being of children and young people in our communities across Essex.

To respond to community members urgently in need of our support we have been:

- Regularly supplying and distributing fresh and dry food parcels and hygiene packs.
- Distributing school supplies and activity books to facilitate at home learning.
- Supporting our local food banks by donating food, hygiene packs and clothing.
- Shopping for essential items and medication for those who are unable to or have difficulty leaving their homes.
- Providing support for parents and carers who are confused by the government's guidance surrounding COVID-19.
- Writing weekly letters to local elderly care home residents.
- Tidying up the gardens of local elderly residents who are shielding and unable to leave their homes.

We have been able to achieve all of this through utilising our existing local network of schools, charities, community centres and churches.





# COMMUNITY RELIEF

As a result of the COVID-19 pandemic, we saw children and their families facing hunger due to loss of employment, reduced income, difficulty obtaining government benefits and lack of supplies at local food banks.

As part of our COVID-19 Community Relief Programme we have delivered **over 1,500 food parcels** (including fresh fruit and vegetables) to over **175 disadvantaged children** and their families living in the most deprived areas in Essex. Our food parcels are carefully put together considering the individual needs of each household, for example, family size and childrens' ages.



Tess Griggs preparing our fresh and dry food parcels for local children and their families across Essex.





As part of our COVID-19 Community Relief Programme, we have partnered with local green grocers, restaurants, food banks and supermarkets through Fareshare, to reduce child hunger across our county. During October Half Term 2020, we **partnered with 4 local businesses to provide 700 meals to over 40 households.**



In December 2020, we partnered with local businesses to help provide a **Christmas dinner and presents for over 50 local children** and their families.





# EDUCATION

## Our Summer School Project

At the Little Edi Foundation, we believe every child deserves equal access to education. Unfortunately, during the pandemic many children were unable to attend school and have missed out on key opportunities to learn develop. According to the Institute of Fiscal Studies, "*school closures are almost certain to increase educational inequalities*".

In order to reduce this impact on the education of local children, the Little Edi Foundation launched it's first ever Summer School in July 2020. We offered 26 children, aged 3-13 years old, from vulnerable and disadvantaged families, to have 1:1 tuition with an experienced primary school teacher over the course of a week- offering them the opportunity to go over any areas of particular difficulty. This event also included sports activities, mindfulness and arts and crafts.



Due to its success, our Summer School will be returning next summer in 2021.





# EDUCATION

## Our school uniform project

As part of our COVID-19 Community Relief Programme we set up a feedback session with the parents of the children we have been supporting, asking them specifically about any needs or concerns they may have. An overwhelming majority of parents expressed concerns about affording school uniform.

Following this feedback, we did some research and were shocked to learn that there is very limited financial support in Essex for school uniform, for example, statutory grants are only available in exceptional circumstances.

In order to better support local children and young people, we set up a school uniform project to raise funds and provide emergency financial support for those in need. This year we have successfully raised sufficient funds **to buy new school uniform for 29 disadvantaged local children.**







# YOUTH DEVELOPMENT

## UK Youth Development Project

At the Little Edi Foundation, we aim to enable the development of key skills that help young people towards pathways into education, training and employment, building the confidence to take on new challenges.

Although our youth activities have been limited throughout the pandemic, we continue to create new opportunities for disadvantaged and disengaged young people to get involved in social action.

In response to the pandemic, our Youth Team have focused on creating projects that bring people together and combat loneliness. To achieve this, the Youth Team set up a pen pal project to connect with elderly residents at local care homes, and help those shielding and most vulnerable to COVID-19 to maintain their gardens.



The Youth Team enjoying a day out to help gardening at a local care home in Essex.



# TEAM LITTLE EDI

## Our Trustees

We have a dedicated team of Trustees who volunteer their time and expertise to ensure the success of our work and the safety of our team and beneficiaries.

Meet the team!



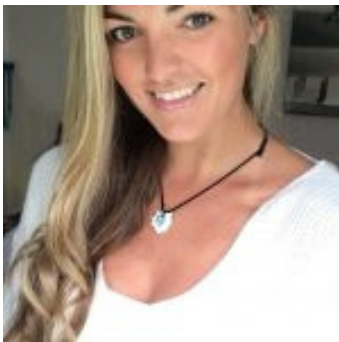
Chris Simpson



Dr. Victoria Coupland



Joshua Brown



Laura Beatty



Tess Griggs



Louise Geer





DREAM.  
ENABLE.  
INSPIRE.



THE  
*little Edie*  
FOUNDATION



CHARITY COMMISSION  
FOR ENGLAND AND WALES

Little Edi Foundation

1169242

## Receipts and payments accounts

CC16a

For the period  
from

01/04/2020

To

31/03/2021

### Section A Receipts and payments

	Unrestricted funds to the nearest £	Restricted funds to the nearest £	Endowment funds to the nearest £	Total funds to the nearest £	Last year to the nearest £
<b>A1 Receipts</b>					
Donations	932	-	-	932	16,970
Fundraising	15,338	-	-	15,338	24,525
DBS Contributions		-	-	-	60
Aid Trip Contributions	3,088	-	-	3,088	3,630
Grants	6,000	-	-	6,000	-
<b>Sub total (Gross income for AR)</b>	<b>25,358</b>	<b>-</b>	<b>-</b>	<b>25,358</b>	<b>45,185</b>
<b>A2 Asset and investment sales, (see table).</b>					
	-	-	-	-	-
<b>Sub total</b>	<b>-</b>	<b>-</b>	<b>-</b>	<b>-</b>	<b>-</b>
<b>Total receipts</b>	<b>25,358</b>	<b>-</b>	<b>-</b>	<b>25,358</b>	<b>45,185</b>
<b>A3 Payments</b>					
Stationery	1,498	-	-	1,498	228
DBS Checks	191	-	-	191	160
Event Costs	-	-	-	-	5,936
Aid	17,061	-	-	17,061	22,637
IT	-	-	-	-	115
Just Givin Costs	216	-	-	216	234
Promotional material	-	-	-	-	105
Insurance	325	-	-	325	-
Motor	217	-	-	217	-
Parking	2	-	-	2	-
Professional	300	-	-	300	-
Purchases	21	-	-	21	-
Rent	2,196	-	-	2,196	-
Sundry	13	-	-	13	-
Training	168	-	-	168	-
Travel	107	-	-	107	-
<b>Sub total</b>	<b>22,271</b>	<b>-</b>	<b>-</b>	<b>22,271</b>	<b>29,415</b>
<b>A4 Asset and investment purchases. (see table)</b>					
	-	-	-	-	-
<b>Sub total</b>	<b>-</b>	<b>-</b>	<b>-</b>	<b>-</b>	<b>-</b>
<b>Total payments</b>	<b>22,271</b>	<b>-</b>	<b>-</b>	<b>22,271</b>	<b>29,415</b>
<b>Net of receipts/(payments)</b>	<b>3,086</b>	<b>-</b>	<b>-</b>	<b>3,086</b>	<b>15,770</b>
<b>A5 Transfers between funds</b>	<b>-</b>	<b>-</b>	<b>-</b>	<b>-</b>	<b>-</b>
<b>A6 Cash funds last year end</b>	<b>18,950</b>	<b>-</b>	<b>-</b>	<b>18,950</b>	<b>3,180</b>
<b>Cash funds this year end</b>	<b>22,036</b>	<b>-</b>	<b>-</b>	<b>22,036</b>	<b>18,950</b>



## Section B Statement of assets and liabilities at the end of the period

Categories	Details	Unrestricted funds to nearest £	Restricted funds to nearest £	Endowment funds to nearest £
<b>B1 Cash funds</b>	Current Account	20,636	-	-
	Current Account	1,400	-	-
	Cash		-	-
	<b>Total cash funds</b>	<b>22,036</b>	<b>-</b>	<b>-</b>
	(agree balances with receipts and payments account(s))	OK	OK	OK
		Unrestricted funds to nearest £	Restricted funds to nearest £	Endowment funds to nearest £
<b>B2 Other monetary assets</b>	Details			
		-	-	-
		-	-	-
		-	-	-
		-	-	-
		-	-	-
<b>B3 Investment assets</b>	Details	Fund to which asset belongs	Cost (optional)	Current value (optional)
			-	-
			-	-
			-	-
			-	-
<b>B4 Assets retained for the charity's own use</b>	Details	Fund to which asset belongs	Cost (optional)	Current value (optional)
			-	-
			-	-
			-	-
			-	-
			-	-
			-	-
			-	-
<b>B5 Liabilities</b>	Details	Fund to which liability relates	Amount due (optional)	When due (optional)
			-	
			-	
			-	
			-	
Signed by one or two trustees on behalf of all the trustees	Signature	Print Name	Date of approval	



Section A

Independent Examiner's Report

Report to the trustees/  
members of

Charity Name  
The Little Edi Foundation

On accounts for the year  
ended

31<sup>st</sup> March 2020

Charity no  
(if any)

1169242

Set out on pages

1 & 2

(remember to include the page numbers of additional sheets)

I report to the trustees on my examination of the accounts of the above charity ("the Trust") for the year ended **31 / 03 / 2020**.

Responsibilities and  
basis of report

As the charity trustees of the Trust, you are responsible for the preparation of the accounts in accordance with the requirements of the Charities Act 2011 ("the Act").

I report in respect of my examination of the Trust's accounts carried out under section 145 of the 2011 Act and in carrying out my examination, I have followed the applicable Directions given by the Charity Commission under section 145(5)(b) of the Act.

Independent  
examiner's statement

I have completed my examination. I confirm that no material matters have come to my attention (~~other than that disclosed below~~\*) in connection with the examination which gives me cause to believe that in, any material respect:

- accounting records were not kept in accordance with section 130 of the Charities Act or;
- the accounts do not accord with the accounting records
- the accounts did not comply with the applicable requirements concerning the form and content of accounts set out in the Charities (Accounts and Reports) Regulations 2008 other than any requirement that the accounts give a 'true and fair' view which is not a matter considered as part of an independent examination.

I have no concerns and have come across no other matters in connection with the examination to which attention should be drawn in order to enable a proper understanding of the accounts to be reached.

\* Please delete the words in the brackets if they do not apply.

Signed:

Date:

06/01/2022

Name:

Kristian Coles

Relevant professional  
qualification(s) or body  
(if any):

MAAT (AAT)

Address:

Unit 3A, Thames Enterprise Centre

Princess Margaret Road

East Tilbury, Essex, RM18 8RH



Only complete if the examiner needs to highlight matters of concern (see CC32, Independent examination of charity accounts: directions and guidance for examiners).

**Give here brief details of any items that the examiner wishes to disclose.**