

ROYAL LEAMINGTON SPA BRASS AND THE BAND FACTORY

England & Wales · Charity number 1169205

Details

Other names	ROYAL LEAMINGTON SPAR BRASS AND THE BAND FACTORY, ROYAL SPA BRASS & THE BAND FACTORY
Status	Registered
Legal form	CIO
Registered	2016-09-15
Register	View on the Charity Commission register

Contact

Address
The Band Factory
Unit 13
Althorpe Street
Leamington Spa
CV31 2AU

Phone 07734985655

Email trustees@royalspabrass.com

Website www.royalspabrass.com

Activities

Objects: TO PROVIDE MUSICAL EDUCATION AND ACTIVITIES FOR THE COMMUNITY, WITH PARTICULAR EMPHASIS IN (BUT NOT LIMITED TO) LEAMINGTON SPA AND THE SURROUNDING AREA. TO PROVIDE REHEARSAL, MEETING, WORKSHOP AND PERFORMANCE FACILITIES FOR COMMUNITY GROUPS, WITH A SPECIAL EMPHASIS ON MUSIC AND ARTS GROUPS. TO ENCOURAGE THE ENJOYMENT OF MUSIC AND THE ARTS BY ALL PEOPLE IRRESPECTIVE OF ETHNICITY, DISABILITY, GENDER, AGE, SEXUAL ORIENTATION OR RELIGIOUS BELIEFS.

Activities: The promotion of community music and the provision of rehearsal space for local music groups

Classification

- **How:** Provides Buildings/facilities/open Space, Provides Services
- **What:** Arts/culture/heritage/science
- **Who:** Children/young People, Other Charities Or Voluntary Bodies, Other Defined Groups, The General Public/mankind

Geography

- Coventry City
- Warwickshire

Finances

Period end	Income	Expenditure	Assets	Employees
2025-04-04	£31,540	£21,764	-	-
2024-04-04	£52,687	£90,814	-	-
2023-04-04	£28,620	£22,787	-	-
2022-04-04	£38,709	£19,997	-	-
2021-04-04	£22,965	£43,910	-	-

Trustees

Name	Role	Appointed
ANNETTE YOLANDA CAIRNS MCIPD		2016-09-13
Andrew James Webber		2020-01-01
Andrew Stevenson		2019-01-15
DR Kirsty Hooper		2018-06-15
Dr Mark Stephen Scott		2019-01-15

ROYAL LEAMINGTON SPA BRASS AND THE BAND FACTORY

England & Wales - Charity number 1169205

Accounts



Royal Leamington Spa Brass & The Band Factory Annual Trustees Report 2024-2025

January 2026

Aims and Purposes

Royal Leamington Spa Brass and The Band Factory (the Charity) have a responsibility to promote community music-making in Leamington Spa through involvement in Royal Leamington Spa's town band and/or development bands, or through the use of the rehearsal facilities at The Band Factory.

The charitable objects as stated in the Charity's constitution are:

- *To provide musical education and activities for the community, with particular emphasis on (but not limited to) Royal Leamington Spa and the surrounding area.*
- *To provide rehearsal, meeting, workshop and performance facilities for community groups, with a special emphasis on music and arts groups.*
- *To encourage the enjoyment of music and the arts by all people irrespective of ethnicity, disability, gender, age, sexual orientation or religious beliefs.*

Objectives and Activities

In furtherance of its charitable objects, the charity has undertaken detailed planning during the year on the Charity's direction of travel, having due regard to the Charity Commission's guidance on public benefit and the objectives detailed in the Charity's Constitution. These considerations have informed both the strategic direction of the charity and the delivery of its activities.

The charity's purposes fall within the advancement of the arts, culture, heritage, and (to a lesser extent) science, as well as the advancement of community development. In particular, the charity seeks to promote access to music education and participation by providing opportunities for individuals of all ages, abilities, and backgrounds to engage in music-making.

The charity delivers public benefit by supporting and facilitating a range of musical activities, including the direct delivery of three brass bands (Senior Band, Buddin' Brass and Brass Roots), and working with other community arts groups (such as LeamProv, Cubbington Silver Band and Sambassadors of Groove), who rehearse, perform, and call The Band Factory home.



Through the provision of affordable rehearsal, workshop, and performance facilities, the charity removes barriers to participation and enables community groups to develop musical skills, confidence, and social connections.

A key objective of the charity is to encourage broad engagement from the local community of Royal Leamington Spa, to support inclusion, lifelong learning, and personal development through music. The charity seeks to create a welcoming and supportive environment for members and users of our facilities, the charity also promotes cultural enrichment, community cohesion, and the enjoyment of music for both participants and audiences.

The Band Factory

Following the purchase of the freehold in 2023, the charity was able to secure planning permission for the proposed improvements to The Band Factory, aimed at enhancing the venue's suitability for the delivery of its charitable purposes as outlined above (Warwick District Council Planning Reference: W/24/0054). Planning permission was granted in June 2024.

The planning permission included two conditions: the installation of a bat box and the completion of an acoustic report to ensure that neighbouring properties are not adversely affected by noise generated by the charity's activities. Both conditions are due to be satisfied by the end of the third quarter of the 2025/26 reporting period.

Despite the current and evident need for facility upgrades, The Band Factory continues to attract a strong and growing base of users.

To support the delivery of the project and to secure the necessary funding, the Trustees appointed Julie Crawshaw as a freelance consultant to assist with fundraising and grant applications.

Band Reports and Events

In April 2024, the Trustees confirmed Jon Lambdon as Musical Director of the Senior Band. Jon had been undertaking the role on an interim basis since July 2023, following the resignation of the previous Musical Director.

Towards the end of the reporting year in March 2025, Emily Stewart-White resigned from her role as Musical Director of the Development Bands in order to pursue her work in



schools and the wider local area. The Trustees wish to formally place on record a thank you to Emily for her significant contribution to the Development Bands over more than a decade of service.

Following Emily's resignation, Mark Scott was appointed as Interim Musical Director of the Development Bands.

Events and Public Appearances

It was a particularly busy and productive year for all three bands in the organisation, with a full programme of performances and community appearances. Highlights included the annual Carols at Warwick Castle, a prestigious seasonal engagement which in 2024 was also filmed for inclusion in a documentary titled Christmas at Warwick Castle, scheduled for broadcast during the Christmas 2025 season.

The traditional Christmas period remained especially active, with the bands delivering a wide range of performances across the local area. These included appearances at shopping centres, Christmas markets, and supermarkets, enabling the charity to bring live music to a broad and diverse audience. These performances not only provided festive entertainment but also supported the charity's objective of increasing public access to music and strengthening its presence within the local community.

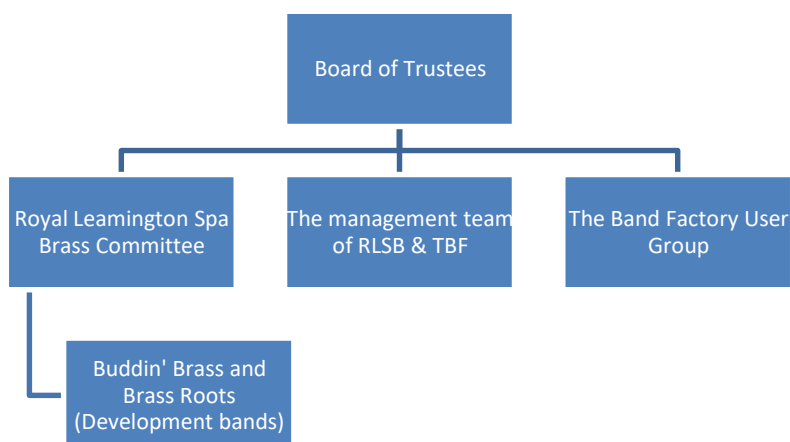
All bands in the organisation also made use of the facilities at The Band Factory And performed concerts there which were open to the wider community.

New Members

All bands are continuing to attract new members, and the bands continue to thrive.

Structure, Governance and Management

The Charity is structured and governed as follows:



RLSB = Royal Leamington Spa Brass, TBF = The Band Factory

Members of the Trustee Board are all active members of RLSB or users of TBF. They were appointed at the AGM in February 2023. They are responsible for the governance and strategic overview of the charity. They met four times in 2024-25.

The current Trustee Board comprises of:

- Annette Cairns (Chair)
- Andrew Webber (Treasurer)
- Andy Stevenson (Secretary)
- Kirsty Hooper
- Mark Scott

The RLSB committee reports to the Trustee Board and is made up from members of the senior band. All are volunteers. The RLSB committee is responsible for making decisions on all matters of general concern and importance to the band including deciding how finances are to be spent, the maintenance of instruments and equipment, events, membership, safeguarding and data protection of members. They met four times last year and report to the Trustee Board.

The management team of RLSB is responsible for all day-to-day matters arising from the band. They meet regularly after band practice to discuss matters regarding music, events and attendance at events.

The Band Factory has a User Group made up from volunteers from all groups using the Band Factory. Day to day running is managed by Trustees with help from members of the user group

Skedda continues to be used for booking rooms by all members and users.



CHARITY COMMISSION
FOR ENGLAND AND WALES

Charity Name Royal Leamington Spa Brass & The Band Factory	No (if any) 1169205
---	------------------------

CC16a

Receipts and payments accounts

For the period from	Period start date 5th April 2024	To	Period end date 4th April 2025
---------------------	-------------------------------------	----	-----------------------------------

Section A Receipts and payments

	Unrestricted funds to the nearest £	Restricted funds to the nearest £	Endowment funds to the nearest £	Total funds to the nearest £	Last year to the nearest £
A1 Receipts					
Bank Charges	6	-	-	6	-
Bank Interest	321	-	-	321	458
Donations	1,602	-	-	1,602	2,092
Events	6,012	-	-	6,012	7,887
Gift Aid	2,291	-	-	2,291	-
Grants	-	-	-	-	20,000
Instrument Hire	1,170	-	-	1,170	1,080
Membership	7,782	-	-	7,782	8,511
Parking Rental	-	-	-	-	1,250
Room Hire	12,356	-	-	12,356	10,764
Uniforms	-	-	-	-	645
Sub total (Gross income for AR)	31,540	-	-	31,540	52,687
A2 Asset and investment sales, (see table).					
	-	-	-	-	-
Sub total	-	-	-	-	-
Total receipts	31,540	-	-	31,540	52,687
A3 Payments					
Bank Charges	96	-	-	96	86
Council Tax	2,977	-	-	2,977	2,466
Events	-	-	-	-	603
Instrument Repair	1,306	-	-	1,306	384
Insurance	1,184	-	-	1,184	1,151
Library	81	-	-	81	773
Maintenance & Cleaning	3,736	-	-	3,736	55,390
MD & Musician Fees	5,915	-	-	5,915	4,538
Office & Marketing	1,084	-	-	1,084	1,011
Professional Fees	1,415	-	-	1,415	9,639
Room Hire	-	-	-	-	18
Subscriptions	140	-	-	140	140
Telephone & Internet	578	-	-	578	509
Uniforms	-	-	-	-	1,795
Utilities	3,251	-	-	3,251	4,416
Sub total	21,764	-	-	21,764	82,920
A4 Asset and investment purchases, (see table)					
The Band Factory - Freehold	-	-	-	-	7,895
Sub total	-	-	-	-	7,895
Total payments	21,764	-	-	21,764	90,815
Net of receipts/(payments)	9,776	-	-	9,776	- 38,127
A5 Transfers between funds	-	-	-	-	-
A6 Cash funds last year end	21,253	-	-	21,253	59,380
Cash funds this year end	31,029	-	-	31,029	21,253

Section B Statement of assets and liabilities at the end of the period

Categories	Details	Unrestricted funds to nearest £	Restricted funds to nearest £	Endowment funds to nearest £
B1 Cash funds	HSBC Charitable Account	13343	-	-
	HSBC Savings Account - Membership	10606	-	-
	HSBC Savings Account - The Band Factory	5877	-	-
	HSBC Savings Account - Project Account	1203	-	-
	Total cash funds	31,029	-	-
	(agree balances with receipts and payments account(s))	OK	OK	OK

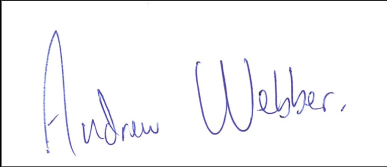
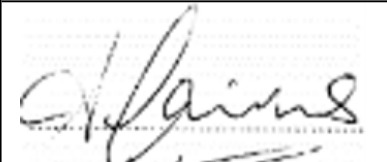
Categories	Details	Unrestricted funds to nearest £	Restricted funds to nearest £	Endowment funds to nearest £
B2 Other monetary assets		-	-	-
		-	-	-

Categories	Details	Fund to which asset belongs	Cost (optional)	Current value (optional)
B3 Investment assets			-	-
			-	-

Categories	Details	Fund to which asset belongs	Cost (optional)	Current value (optional)
B4 Assets retained for the charity's own use	The Band Factory, Althorpe Street, Leamington Spa	Restricted funds	-	330,000
			-	-
			-	-
			-	-

Categories	Details	Fund to which liability relates	Amount due (optional)	When due (optional)
B5 Liabilities			-	
			-	

Signed by one or two trustees on behalf of all the trustees

Signature	Print Name	Date of approval
	Andrew Webber - Treasurer	04/07/2025
	Annette Cairns - Chair	04/07/2025



Section A

Independent Examiner's Report

**Report to the trustees/
members of**

Charity Name
Royal Leamington Spa Brass & The Band Factory

**On accounts for the year
ended**

4 April 2025

**Charity no
(if any)**

1169205

Set out on pages

One and Two

(remember to include the page numbers of additional sheets)

I report to the trustees on my examination of the accounts of the above charity ("the Trust") for the year ended 04 / 04 / 2025.

**Responsibilities and
basis of report**

As the charity trustees of the Trust, you are responsible for the preparation of the accounts in accordance with the requirements of the Charities Act 2011 ("the Act").

I report in respect of my examination of the Trust's accounts carried out under section 145 of the 2011 Act and in carrying out my examination, I have followed the applicable Directions given by the Charity Commission under section 145(5)(b) of the Act.

**Independent
examiner's statement**

I have completed my examination. I confirm that no material matters have come to my attention (other than that disclosed below *) in connection with the examination which gives me cause to believe that in, any material respect:

- accounting records were not kept in accordance with section 130 of the Act or
- the accounts do not accord with the accounting records

I have no concerns and have come across no other matters in connection with the examination to which attention should be drawn in order to enable a proper understanding of the accounts to be reached.

** Please delete the words in the brackets if they do not apply.*

Signed:

Date:

4 November 2025

Name:

Sue Bluteau

**Relevant professional
qualification(s) or body
(if any):**

CIMA (Retired)

Address:

4 Charles Street

Warwick

CV34 5LE

Only complete if the examiner needs to highlight matters of concern (see CC32, Independent examination of charity accounts: directions and guidance for examiners).

Give here brief details of any items that the examiner wishes to disclose.

ROYAL LEAMINGTON SPA BRASS AND THE BAND FACTORY

England & Wales - Charity number 1169205

Accounts



Royal Leamington Spa Brass & the Band Factory Annual Trustees Report 2023-2024

Aims and purposes

Royal Leamington Spa Brass and the Band Factory (RLSB & TBF) have the responsibility to promote community music making in Leamington Spa through involvement in a brass band or using the rehearsal facilities at The Band Factory.

Objectives and Activities

The charities objectives and activities are as follows:

- To provide musical education and activities for the community with particular emphasis, but not limited to, Leamington Spa and the surrounding area
- To provide rehearsal, meeting, performance and workshop facilities for community groups with special emphasis on music and art groups
- To encourage the enjoyment of music and the arts by people of all ages with no discrimination of grounds of age, sex, race or disability

When planning for the next year RLSB & TBF have considered the guidance on public benefit and the objectives as set out in our constitution. Our charitable purpose falls under the advancement of arts, culture, heritage or science and also the advancement of community development. We are committed to encouraging as many people in the local community to be involved in music making in Leamington through participating in the bands and choirs that use the Band Factory.

Purchase of the Band Factory Freehold

The fabric of the Band Factory is degrading due to age and usage. We had been unable to secure funding due to concerns about who owns the Freehold. The charity had 100% of the leasehold but only held 25% of the freehold. It was difficult to track down who owned the other 75%.

We sought the advice of the solicitor who had been involved in the original purchase of the building. The original purchase had been made with the help of a company that was no longer trading. All assets had reverted to the Crown.

The trustees proposed to purchase the remaining asset from the Crown. This was put to the members at the 2023 AGM and the motion was passed.

The purchase was completed in November 2023 and the charity is pleased to announce that they now own 100% of the premises. This will enable us to seek funding to improve the facilities.



We have also engaged the services of an architect to draw up plans which have been sent to planning for approval. We can confirm that we have also successfully gained planning permission for improvements to the BAND FACTORY which include:

- New toilets
- New staircase
- New windows
- New heating
- Improved storage

We were also able to secure funding from the local council to replace the roof over the Band room, which also brings the insulation of the roof up to building standards.

2024 will see the start of seeking funding to be able to bring the plans to life.

Band Reports and Events

Both bands had a busy year.

RSB 2023 Events

10/04/2023: Leamington Parade Easter festival; small band.

05/05/2023: Evergreen school; small band performing to local school.

06/05/2023: Leamington Band Stand Coronation Event: Full band playing in the Royal Pump Room Gardens after live streaming of coronation finished.

07/05/2023: Whitnash proms in the park; Full band playing last night of the proms set in local community fayre.

07/05/2023: Ryton pools country park; small band playing as part of coronation celebrations.

28/05/2023: Warwick food festival; small band.

03/06/2023; Hampton Lucy Village Fete.

07/06/2023: Small band playing at local citizen's 110th birthday party.

10/06/2023: Kenilworth Lions; Full band performing on stage as part of the Kenilworth Lions charity event.

11/06/2023: Cars in the spa; Small band playing as part of the entertainment at the annual Leamington 'Cars in the Spa' event.

25/06/2023: Bromsgrove Bands in the Park; full band playing at the summer bands in the park events held in Bromsgrove. A free performance for members of the public to attend.

30/07/2023: Kenilworth Food Festival; small band

02/09/2023: Morrisons Charity Butterfly Event - I don't have any more details apart from this and recall something about a butterfly??

21/10/2023: Oompah Band playing at The Antelope in Lighthorne.

28/10/2023: Oompah Band playing at Chestnut Cottage in Lighthorne.

12/11/2023: Remembrance Service Burbage; Small band playing at the remembrance Sunday event.



19/11/2023: Rotary Christmas Tree Lights switch on; full band playing at the Rotary club's tree of life light switch on event.

23/11/2023: Warwick Victorian Evening; small band playing as part of Warwick's annual Victorian evening.

23/11/2023: RSB Quintet playing at Christmas tree festival in St Mary's Church Warwick.

24/11/2023: Kenilworth high street Christmas lights switch on; small band.

25/11/2023: RSB Quintet playing at Christmas tree festival in St Mary's Church Warwick.

25/11/2023: RSB Autumn Concert: Full Band playing alongside Cubbington Silver band in our autumn concert at Holy Trinity Church Leamington.

30/11/2023: RSB Quintet playing at Christmas tree festival in St Mary's Church Warwick.

2/12/2023: RSB Quintet playing at Christmas tree festival in St Mary's Church Warwick.

3/12/2023: Leamington Christmas Lantern Parade; small band.

3/12/2023: Myton Hospice Coventry Light up a Life event; small band.

8/12/2023: Kenilworth Christmas market; small band.

10/12/2023: Myton Hospice Santa Dash; small band playing at Myton Hospice annual Santa Dash fundraiser.

10/12/2023: Small band busking on the parade in Leamington Spa.

10/12/2023: Church of the Holy Cross Moreton Morrell; small band playing at carol service in church.

10/12/2023: Myton Hospice Warwick Light up a Life event; small band.

11/12/2023: Small band playing at Cubbington Mill Care Home.

16/12/2023: Carols at the Castle: Full band playing at the annual Carols at the Castle Event at Warwick Castle along with the St Marys choir.

17/12/2023: Small band playing at the Black Horse in Moreton Morrell.

19/12/2023: Small band playing carols at Morrisons.

20/12/2023: Small band playing carols at Morrisons.

21/12/2023: Small band playing carols at the 'Stilton Sniffers' event in Norton Lindsey.

24/12/2023: Small band playing carols at Morrisons.

Successful Concerts and Events

Valentines Solos Concert-some amazing performances from members, especially the ones who had only just joined, such bravery to get up on stage!

Night at the Oscars – Band awards given.

Leek Wootton Village Fete and Safeguarding inspection - council please with all our safeguarding procedures and organisation of the event.

Summer Party performances from other groups within the band factory that our members also perform in.

Roots summer performance.

Fireworks Night concert - a highly successful concert and fundraising opportunity.

Masons Christmas Dinner Carols.



Christmas Concert with St Peter's Choir.

Christmas Party joint rehearsals-all three groups rehearsed together to further links and friendships between the bands.

Promotions

6 Roots members have joined Buddin'

3 Buddin' members have changed part to a different instrument for further skills development.

3 Buddin' members were invited and encouraged to try out Senior Band; invites were not accepted due to commitment/time issues.

GenZ Brass: Teenage group worked well this last year and performed at rehearsals for Roots, as well as in gigs in public. Due to GCSEs and A Levels the group has disbanded.

GenZ Brass has been replaced by GenX Brass: this quintet has been promoted from Roots to the studio upstairs to run their own rehearsals. They have taken on new instruments and parts, and we look forward to welcoming them on to the stage for the first time at the Solos Concert in April.

Instrument hire

Members of Buddin' who play trumpet are encouraged to hire cornets, all members are also encouraged to try other instruments, this has increased the revenue from hire.

Plans for 2024

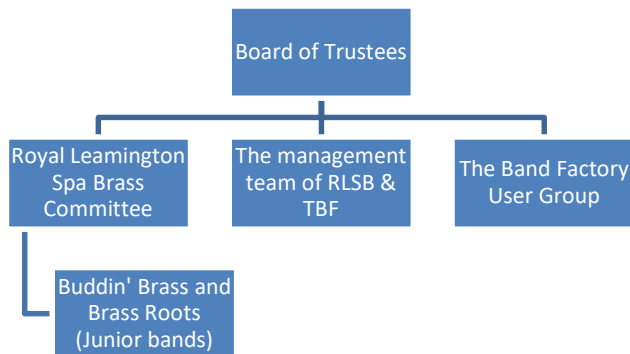
Continuing to capitalise on the events from 2023.

Jon Lambdon was confirmed as new MD of RSB during 2023 following the departure of Micah Parsons. The band has been going from strength to strength and seeking new opportunities to play. This will include returning to Ironbridge Festival of Brass and continuing to play for Carols at the Castle, our most high-profile concert.



Structure, governance and management.

RLSB and The Band Factory is structured as follows:



Members of the Trustee board are all active members of RLSB. They were appointed at the AGM to launch the charity. They are responsible for the governance and strategic overview of the charity. They met four times in 2017-18.

The members are:

- Annette Cairns (current chair)
- Andrew Webber (Treasurer)
- Andy Stevenson (Secretary)
- Kirsty Hooper
- Mark Scott

The RLSB committee reports to the Board of trustees and is made up from members of the senior band. All are volunteers. The RLSB committee is responsible for making decisions on all matters of general concern and importance to the band including deciding how finances are to be spent, the maintenance of instruments and equipment, events, membership, safeguarding and data protection of members. They met three times last year and report into the Trustees.

The management team of RLSB is responsible for all day-to-day matters arising from the band. They meet regularly after band practice to discuss matters regarding music, events and attendance at events.

The Band Factory has a User Group made up from volunteers from all groups using the Band Factory. Day to day running is managed by Trustees with help from members of the user group.

Skedda continues to be used for booking rooms by all members and users.



CHARITY COMMISSION
FOR ENGLAND AND WALES

Charity Name
Royal Leamington Spa Brass and The Band Factory

No (if any)
1169205

CC16a

Receipts and payments accounts

For the period from	Period start date 5th April 2023	To	Period end date 4th April 2024
------------------------	-------------------------------------	----	-----------------------------------

Section A Receipts and payments

	Unrestricted funds to the nearest £	Restricted funds to the nearest £	Endowment funds to the nearest £	Total funds to the nearest £	Last year to the nearest £
A1 Receipts					
Bank Interest	458	-	-	458	108
Donations	2,092	-	-	2,092	2,161
Events	7,887	-	-	7,887	8,015
Grants	20,000	-	-	20,000	-
Instrument Hire	1,080	-	-	1,080	713
Parking Rental	1,250	-	-	1,250	1,500
Room Hire	10,764	-	-	10,764	9,527
Membership	8,511	-	-	8,511	6,596
Uniforms	645	-	-	645	-
	-	-	-	-	-
Sub total (Gross income for AR)	52,687	-	-	52,687	28,620
A2 Asset and investment sales, (see table).					
	-	-	-	-	-
	-	-	-	-	-
Sub total	-	-	-	-	-
Total receipts	52,687	-	-	52,687	28,620
A3 Payments					
Bank Charges	86	-	-	86	114
Council Tax	2,466	-	-	2,466	2,125
Instrument Repair	384	-	-	384	798
Insurance	1,151	-	-	1,151	1,078
Library	773	-	-	773	378
Maintenance & Cleaning	55,390	-	-	55,390	3,591
MD & Musician Fees	4,538	-	-	4,538	3,178
Office & Marketing	816	-	-	816	5,954
Subscriptions	140	-	-	140	138
Telephone & Internet	509	-	-	509	475
Training	195	-	-	195	475
Uniforms	1,795	-	-	1,795	-
Utilities	4,416	-	-	4,416	4,958
Events	603	-	-	603	-
Professional Fees	9,639	-	-	9,639	-
Room Hire	18	-	-	18	-
	-	-	-	-	-
Sub total	82,919	-	-	82,919	22,787
A4 Asset and investment purchases, (see table)					
The Band Factory - Freehold	7,895	-	-	7,895	-
	-	-	-	-	-
Sub total	7,895	-	-	7,895	-
Total payments	90,814	-	-	90,814	22,787
Net of receipts/(payments)	- 38,127	-	-	- 38,127	5,833
A5 Transfers between funds	-	-	-	-	-
A6 Cash funds last year end	59,380	-	-	59,380	53,547
Cash funds this year end	21,253	-	-	21,253	59,380

Section B Statement of assets and liabilities at the end of the period

Categories	Details	Unrestricted funds to nearest £	Restricted funds to nearest £	Endowment funds to nearest £
B1 Cash funds	HSBC Charitable Account	5614	-	-
	HSBC Savings Account	10024	-	-
	HSBC Savings Account	5614	-	-
	Total cash funds	21,253	-	-
	(agree balances with receipts and payments account(s))	OK	OK	OK

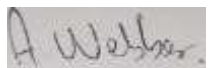
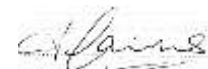
Categories	Details	Unrestricted funds to nearest £	Restricted funds to nearest £	Endowment funds to nearest £
B2 Other monetary assets		-	-	-
		-	-	-
		-	-	-
		-	-	-
		-	-	-
		-	-	-

Categories	Details	Fund to which asset belongs	Cost (optional)	Current value (optional)
B3 Investment assets			-	-
			-	-
			-	-
			-	-
			-	-

Categories	Details	Fund to which asset belongs	Cost (optional)	Current value (optional)
B4 Assets retained for the charity's own use	The Band Factory, Althorpe Street, Leamington Spa	Unrestricted	-	330,000
			-	-
			-	-
			-	-
			-	-
			-	-
			-	-
			-	-
			-	-

Categories	Details	Fund to which liability relates	Amount due (optional)	When due (optional)
B5 Liabilities			-	
			-	
			-	
			-	
			-	

Signed by one or two trustees on behalf of all the trustees

Signature	Print Name	Date of approval
	Andrew Webber - Treasurer	03 January 2025
	Annette Cairns - Chair	03 January 2025



Section A

Independent Examiner's Report

**Report to the trustees/
members of**

Charity Name
Royal Leamington Spa Brass & The Band Factory

**On accounts for the year
ended**

4 April 2024

**Charity no
(if any)**

1169205

Set out on pages

One and Two

(remember to include the page numbers of additional sheets)

I report to the trustees on my examination of the accounts of the above charity ("the Trust") for the year ended 04 / 04 / 2024.

**Responsibilities and
basis of report**

As the charity trustees of the Trust, you are responsible for the preparation of the accounts in accordance with the requirements of the Charities Act 2011 ("the Act").

I report in respect of my examination of the Trust's accounts carried out under section 145 of the 2011 Act and in carrying out my examination, I have followed the applicable Directions given by the Charity Commission under section 145(5)(b) of the Act.

**Independent
examiner's statement**

I have completed my examination. I confirm that no material matters have come to my attention (other than that disclosed below *) in connection with the examination which gives me cause to believe that in, any material respect:

- accounting records were not kept in accordance with section 130 of the Act or
- the accounts do not accord with the accounting records

I have no concerns and have come across no other matters in connection with the examination to which attention should be drawn in order to enable a proper understanding of the accounts to be reached.

** Please delete the words in the brackets if they do not apply.*

Signed:

Date:

17 January 2025

Name:

Sue Bluteau

**Relevant professional
qualification(s) or body
(if any):**

CIMA (Retired)

Address:

4 Charles Street

Warwick

CV34 5LE

Only complete if the examiner needs to highlight matters of concern (see CC32, Independent examination of charity accounts: directions and guidance for examiners).

Give here brief details of any items that the examiner wishes to disclose.

ROYAL LEAMINGTON SPA BRASS AND THE BAND FACTORY

England & Wales - Charity number 1169205

Accounts



Royal Leamington Spa Brass & the Band Factory Annual Trustees Report 2022-2023

Aims and purposes

Royal Leamington Spa Brass and the Band Factory (RLSB & TBF) have the responsibility to promote community music making in Leamington Spa through involvement in a brass band or using the rehearsal facilities at The Band Factory.

Objectives and Activities

The charities objectives and activities are as follows:

- To provide musical education and activities for the community with particular emphasis, but not limited to, Leamington Spa and the surrounding area
- To provide rehearsal, meeting, performance and workshop facilities for community groups with special emphasis on music and art groups
- To encourage the enjoyment of music and the arts by people of all ages with no discrimination of grounds of age, sex, race or disability

When planning for the next year RLSB & TBF have considered the guidance on public benefit and the objectives as set out in our constitution. Our charitable purpose falls under the advancement of arts, culture, heritage or science and also the advancement of community development. We are committed to encouraging as many people in the local community to be involved in music making in Leamington through participating in the bands and choirs that use the Band Factory.

Comments

Coronavirus continued to exert an effect on the Charity April 2022-March 2023. Many of our ad hoc users were very slow to return to the Band Factory as they had either disbanded or had found other venues whilst we were closed.



Maintenance

All essential maintenance was carried out to the building including electrical checks and checks of fire safety system. There was a complete Electrical check including PAT testing to renew the Electrical Certificate we hold/

Events

There were some significant changes in how local councils ran their summer schedules of events in bandstands following the death of Derek Bruce who used to manage all the bookings. This has meant developing new, and more relationships with councils directly. Leamington and Warwick District Council have completely stopped their Bands in The Park schedules.

The Christmas period was a successful one although significantly down on previous years due to loss of important contacts. The main event was Carols at the Castle which was in the 50th year. Covid restrictions being lifted also meant more people were able to attend. Monies raised from the Christmas period are in the Treasurer Report

Smaller events for the junior bands were held at the Band Factory which proved popular with parents.

Musical Director

Micah Parsons was appointed as senior MD in April 2022 and brought with him enthusiasm and some new ideas. Collaboration with the Salvation Army in Coventry led to a joint concert and the hope that bonds will be forged with other bands in the area.

Fund Raising

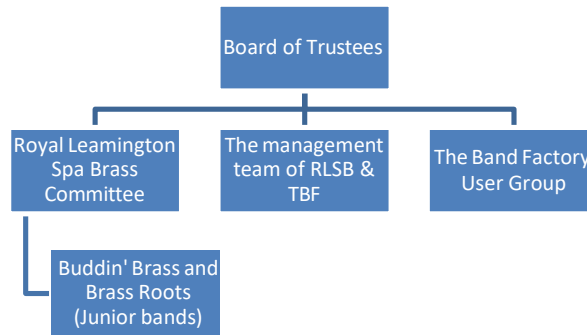
Fundraising continues to be low key as events start to come into the calendar. The trustees are actively looking for any funding available and have been working with Brass Bands England to source funding.

The building was valued during 2021 and discussions with Sat Bhandal, Moore & Tebbutt, Solicitors confirmed that the charity owns the leasehold and holds the Freehold in Trust. This means that we can broaden our scope of looking for funding available.

Structure, governance and management



RLSB and The Band Factory is structured as follows



Members of the Trustee board are all active members of RLSB. They were appointed at the AGM to launch the charity. They are responsible for the governance and strategic overview of the charity. They met four times via Zoom in 2022-23.

The members are

- Annette Cairns (current chair)
- Andrew Webber (Treasurer)
- Andy Stevenson (Secretary)
- Kirsty Hooper
- Mark Scott

The RLSB committee reports to the Board of trustees and is made up from members of the senior band. All are volunteers. The RLSB committee is responsible for making decisions on all matters of general concern and importance to the band including deciding how finances are to be spent, the maintenance of instruments and equipment, events, membership, safeguarding and data protection of members. They met three times last year and report into the Trustees

The management team of RLSB is responsible for all day to day matters arising from the band. They meet regularly after band practice to discuss matters regarding music, events and attendance at events.

The Band Factory has a User Group made up from volunteers from all groups using the Band Factory. They are consulted on all elements of the building including fund raising and maintenance of the fabric of the building. A small group of people are responsible for the day to day running of the band factory and report directly to the Trustees. The charity uses Skedda – an online room booking system, to enable effective resource management and invoicing.



Receipts and payments accounts

For the period from	Period start date 5th April 2022	To	Period end date 4th April 2023
------------------------	-------------------------------------	----	-----------------------------------

Section A Receipts and payments

	Unrestricted funds to the nearest £	Restricted funds to the nearest £	Endowment funds to the nearest £	Total funds to the nearest £	Last year to the nearest £
A1 Receipts					
Bank Interest	108	-	-	108	1
Donations	2,161	-	-	2,161	2,566
Events	8,015	-	-	8,015	7,755
Grants	-	-	-	-	12,500
Instrument Hire	713	-	-	713	-
Parking Rental	1,500	-	-	1,500	2,000
Room Hire	9,527	-	-	9,527	7,832
Membership	6,596	-	-	6,596	6,055
	-	-	-	-	-
	-	-	-	-	-
Sub total (Gross income for AR)	28,620	-	-	28,620	38,709
A2 Asset and investment sales, (see table).					
	-	-	-	-	-
	-	-	-	-	-
Sub total	-	-	-	-	-
Total receipts	28,620	-	-	28,620	38,709
A3 Payments					
Bank Charges	114	-	-	114	40
Council Tax	2,125	-	-	2,125	2,125
Instrument Repair	798	-	-	798	811
Insurance	1,078	-	-	1,078	1,103
Library	378	-	-	378	124
Maintenance & Cleaning	3,591	-	-	3,591	6,626
MD & Musician Fees	3,178	-	-	3,178	3,246
Office & Marketing	5,954	-	-	5,954	1,435
Subscriptions	138	-	-	138	100
Telephone & Internet	475	-	-	475	429
Training	-	-	-	-	120
Uniforms	-	-	-	-	-
Utilities	4,958	-	-	4,958	3,838
	-	-	-	-	-
	-	-	-	-	-
Sub total	22,787	-	-	22,787	19,997
A4 Asset and investment purchases, (see table)					
	-	-	-	-	-
	-	-	-	-	-
Sub total	-	-	-	-	-
Total payments	22,787	-	-	22,787	19,997
Net of receipts/(payments)	5,833	-	-	5,833	18,712
A5 Transfers between funds	-	-	-	-	-
A6 Cash funds last year end	53,547	-	-	53,547	34,835
Cash funds this year end	59,380	-	-	59,380	53,547

Section B Statement of assets and liabilities at the end of the period

Categories	Details	Unrestricted funds to nearest £	Restricted funds to nearest £	Endowment funds to nearest £
B1 Cash funds	HSBC Charitable Account	33,846	-	-
	HSBC Savings Account	5,447	-	-
	HSBC Savings Account	20,087	-	-
	Total cash funds	59,380	-	-
	(agree balances with receipts and payments account(s))	OK	OK	OK

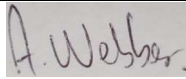
	Details	Unrestricted funds to nearest £	Restricted funds to nearest £	Endowment funds to nearest £
B2 Other monetary assets		-	-	-
		-	-	-
		-	-	-
		-	-	-
		-	-	-
		-	-	-

	Details	Fund to which asset belongs	Cost (optional)	Current value (optional)
B3 Investment assets			-	-
			-	-
			-	-
			-	-
			-	-

	Details	Fund to which asset belongs	Cost (optional)	Current value (optional)
B4 Assets retained for the charity's own use			-	-
			-	-
			-	-
			-	-
			-	-
			-	-
			-	-
			-	-
			-	-

	Details	Fund to which	Amount due	When due
B5 Liabilities			-	
			-	
			-	
			-	
			-	

Signed by one or two trustees on behalf of all the trustees

Signature	Print Name	Date of approval
	Andrew Webber - Treasurer	20/10/2023
	Annette Cairns - Chair	20/10/2023



Section A

Independent Examiner's Report

**Report to the trustees/
members of**

Royal Spa Brass & The Band Factory

**On accounts for the year
ended**

4th April 2023

**Charity no
(if any)**

1169205

Set out on pages

One and Two

**Responsibilities and
basis of report**

I report to the trustees on my examination of the accounts of the above charity ("the Trust") for the year ended 04 / 04 /2023.

As the charity's trustees, you are responsible for the preparation of the accounts in accordance with the requirements of the Charities Act 2011 ("the Act").

I report in respect of my examination of the Trust's accounts carried out under section 145 of the 2011 Act and in carrying out my examination, I have followed all the applicable Directions given by the Charity Commission under section 145(5)(b) of the Act.

**Independent
examiner's statement**

I have completed my examination. I confirm that no material matters have come to my attention in connection with the examination which gives me cause to believe that in, any material respect:

- the accounting records were not kept in accordance with section 130 of the Charities Act; or
- the accounts did not accord with the accounting records; or
- the accounts did not comply with the applicable requirements concerning the form and content of accounts set out in the Charities (Accounts and Reports) Regulations 2008 other than any requirement that the accounts give a 'true and fair' view which is not a matter considered as part of an independent examination.

I have no concerns and have come across no other matters in connection with the examination to which attention should be drawn in this report in order to enable a proper understanding of the accounts to be reached.

Signed:

Date:

7th January 2023

Name:

Sue Bluteau

**Relevant professional
qualification(s) or body
(if any):**

CIMA

Address:

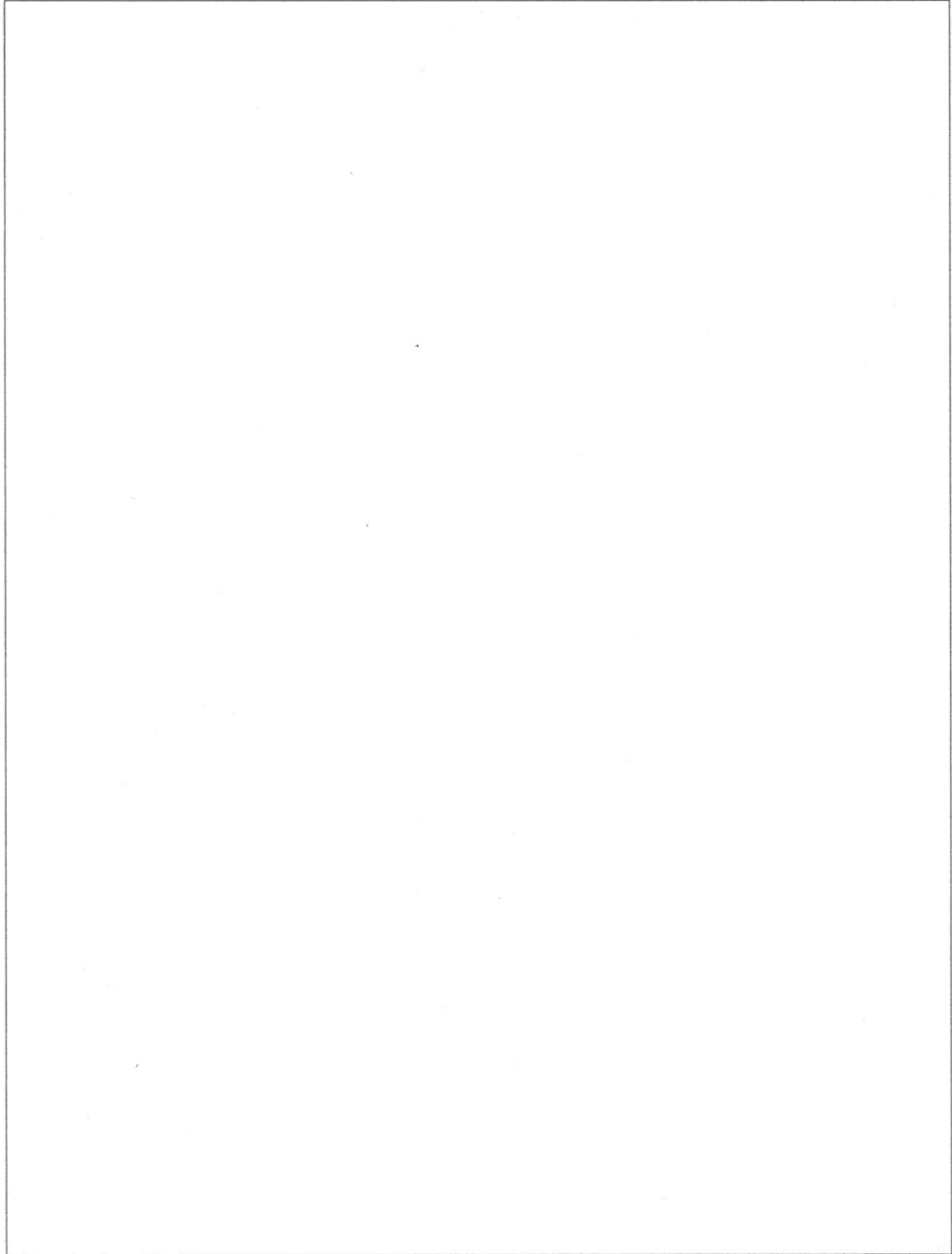
4 Charles Street

Warwick

CV34 5LE

Only complete if the examiner needs to highlight material matters of concern (see CC32, Independent examination of charity accounts: directions and guidance for examiners).

Give here brief details of any items that the examiner wishes to disclose.



ROYAL LEAMINGTON SPA BRASS AND THE BAND FACTORY

England & Wales - Charity number 1169205

Accounts



Royal Leamington Spa Brass & the Band Factory Annual Trustees Report 2021-2022

Aims and purposes

Royal Leamington Spa Brass and the Band Factory (RLSB &TBF) have the responsibility to promote community music making in Leamington Spa through involvement in a brass band or using the rehearsal facilities at The Band Factory.

Objectives and Activities

The charities objectives and activities are as follows:

- To provide musical education and activities for the community with particular emphasis, but not limited to, Leamington Spa and the surrounding area
- To provide rehearsal, meeting, performance and workshop facilities for community groups with special emphasis on music and art groups
- To encourage the enjoyment of music and the arts by people of all ages with no discrimination of grounds of age, sex, race or disability

When planning for the next year RLSB &TBF have considered the guidance on public benefit and the objectives as set out in our constitution. Our charitable purpose falls under the advancement of arts, culture, heritage or science and also the advancement of community development. We are committed to encouraging as many people in the local community to be involved in music making in Leamington through participating in the bands and choirs that use the Band Factory.

The Impact of Coronavirus on the Royal Leamington Spa Brass and The Band Factory 2021-2022

Coronavirus continued to exert a significant affect on the Charity April 2021-March 2022. It impacted our abilities to run events and promote the charity into the community.

The impact of the pandemic is yet to be calculated. Most people continued paying their membership subs to Royal Spa Brass. It was our fundraising events that were the most impacted.

The amount of money received from people hiring the Band Factory fell substantially due to the restrictions. Several of the groups that do use the Band Factory also lost members and some found other venues.



Maintenance

All essential maintenance was carried out to the building including electrical checks and checks of fire safety system.

The final part of the roof gully was replaced and made good which has ensured that the Band Factory is now totally watertight, at least from the roof.

Events

The Christmas period was a successful one although significantly down on previous years due to loss of important contacts. The main event was Carols at the Castle which returned with appropriate covid restrictions into the Courtyard at Warwick Castle. Monies raised from the Christmas period are in the Treasurer Report

Smaller events for the junior bands were held at the Band Factory which proved popular with parents.

Musical Director

Mark Phillips, our Senior Band conductor decided to move down to Cornwall and sadly tendered his notice during 2021. This was disappointing as the Band had responded to his conducting positively and we had gained new members.

Jon Lambdon, our Librarian stepped into the role temporarily whilst we commenced the search for a new Musical Director. He proved very popular and took the band to Warwick Carols at the Castle very successfully.

He decided not to apply for the role which was disappointing. We received two applicants and appointed Micah Parsons based on his plans for the band which are ambitious, centring around workshops, community events and promoting brass banding in the Midlands. This resonated with our charitable purpose. He commenced in April 2022

Fund Raising

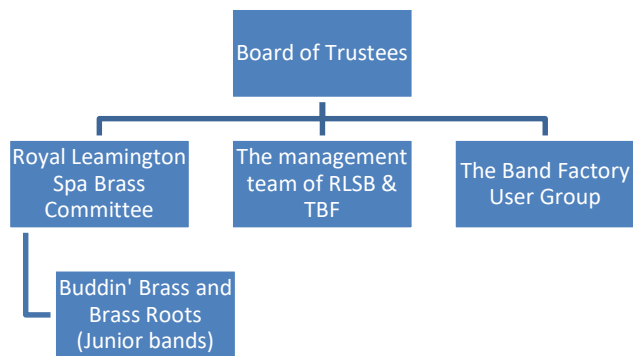
Fundraising continues to be low key as events start to come into the calendar. The trustees are actively looking for any funding available and have been working with Brass Bands England to source funding.

The building was valued during 2021 and discussions with Sat Bhandal, Moore & Tebbutt, Solicitors confirmed that the charity owns the leasehold and holds the Freehold in Trust. This means that we can broaden our scope of looking for funding available.

Structure, governance and management



RLSB and The Band Factory is structured as follows



Members of the Trustee board are all active members of RLSB. They were appointed at the AGM to launch the charity. They are responsible for the governance and strategic overview of the charity. They met four times via Zoom in 2021-22.

The members are

- Annette Cairns (current chair)
- Andrew Webber (Treasurer)
- Andy Stevenson (Secretary)
- Kirsty Hooper
- Mark Scott

The RLSB committee reports to the Board of trustees and is made up from members of the senior band. All are volunteers. The RLSB committee is responsible for making decisions on all matters of general concern and importance to the band including deciding how finances are to be spent, the maintenance of instruments and equipment, events, membership, safeguarding and data protection of members. They met three times last year and report into the Trustees

The management team of RLSB is responsible for all day to day matters arising from the band. They meet regularly after band practice to discuss matters regarding music, events and attendance at events.

The Band Factory has a User Group made up from volunteers from all groups using the Band Factory. They are consulted on all elements of the building including fund raising and maintenance of the fabric of the building. A small group of people are responsible for the day to day running of the band factory and report directly to the Trustees. The charity uses Skedda – an online room booking system, to enable effective resource management and invoicing.



Receipts and payments accounts

For the period from	Period start date 5th April 2021	To	Period end date 4th April 2022
------------------------	-------------------------------------	----	-----------------------------------

Section A Receipts and payments

	Unrestricted funds to the nearest £	Restricted funds to the nearest £	Endowment funds to the nearest £	Total funds to the nearest £	Last year to the nearest £
A1 Receipts					
Bank Interest	1	-	-	1	5
Donations	2,566	-	-	2,566	5,784
Events	7,755	-	-	7,755	3,397
Grants	12,500	-	-	12,500	-
Parking Rental	2,000	-	-	2,000	500
Room Hire	7,832	-	-	7,832	6,307
Subscriptions	6,055	-	-	6,055	6,972
	-	-	-	-	-
	-	-	-	-	-
Sub total (Gross income for AR)	38,709	-	-	38,709	22,965
A2 Asset and investment sales, (see table).					
	-	-	-	-	-
	-	-	-	-	-
Sub total	-	-	-	-	-
Total receipts	38,709	-	-	38,709	22,965
A3 Payments					
Bank Charges	40	-	-	40	15
Council Tax	2,125	-	-	2,125	3,106
Instrument Repair	811	-	-	811	110
Insurance	1,103	-	-	1,103	1,155
Library	124	-	-	124	-
Maintenance & Cleaning	6,626	-	-	6,626	31,503
MD & Musician Fees	3,246	-	-	3,246	4,128
Misc & Sundry	-	-	-	-	42
New Instruments	-	-	-	-	-
Office & Marketing	1,435	-	-	1,435	-
Subscriptions	100	-	-	100	97
Telephone & Internet	429	-	-	429	388
Training	120	-	-	120	-
Uniforms	-	-	-	-	-
Utilities	3,838	-	-	3,838	3,366
	-	-	-	-	-
	-	-	-	-	-
Sub total	19,997	-	-	19,997	43,910
A4 Asset and investment purchases, (see table)					
	-	-	-	-	-
	-	-	-	-	-
Sub total	-	-	-	-	-
Total payments	19,997	-	-	19,997	43,910
Net of receipts/(payments)	18,712	-	-	18,712	- 20,945
A5 Transfers between funds	-	-	-	-	-
A6 Cash funds last year end	34,835	-	-	34,835	55,780
Cash funds this year end	53,547	-	-	53,547	34,835

Section B Statement of assets and liabilities at the end of the period

Categories	Details	Unrestricted funds to nearest £	Restricted funds to nearest £	Endowment funds to nearest £
B1 Cash funds	HSBC Current Accounts	41,047	-	-
	HSBC Deposit Account	12,500	-	-
			-	-
	Total cash funds	53,547	-	-
	(agree balances with receipts and payments account(s))	OK	OK	OK
		Unrestricted funds to nearest £	Restricted funds to nearest £	Endowment funds to nearest £

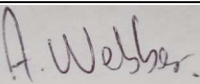
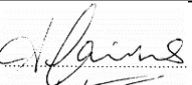
Categories	Details	Unrestricted funds to nearest £	Restricted funds to nearest £	Endowment funds to nearest £
B2 Other monetary assets		-	-	-
		-	-	-
		-	-	-
		-	-	-
		-	-	-
		-	-	-

Categories	Details	Fund to which asset belongs	Cost (optional)	Current value (optional)
B3 Investment assets			-	-
			-	-
			-	-
			-	-
			-	-

Categories	Details	Fund to which asset belongs	Cost (optional)	Current value (optional)
B4 Assets retained for the charity's own use			-	-
			-	-
			-	-
			-	-
			-	-
			-	-
			-	-
			-	-

Categories	Details	Fund to which	Amount due	When due
B5 Liabilities			-	
			-	
			-	
			-	
			-	

Signed by one or two trustees on behalf of all the trustees

Signature	Print Name	Date of approval
	Andrew Webber - Treasurer	01/06/2022
	Annette Cairns - Chair	01/06/2022



Section A

Independent Examiner's Report

**Report to the trustees/
members of**

Charity Name
Royal Spa Brass & The Band Factory

**On accounts for the year
ended**

4th April 2022 **Charity no
(if any)** 1169205

Set out on pages

One and Two

**Responsibilities and
basis of report**

I report to the trustees on my examination of the accounts of the above charity ("the Trust") for the year ended 04 / 04 /2022.
As the charity's trustees, you are responsible for the preparation of the accounts in accordance with the requirements of the Charities Act 2011 ("the Act").

I report in respect of my examination of the Trust's accounts carried out under section 145 of the 2011 Act and in carrying out my examination, I have followed all the applicable Directions given by the Charity Commission under section 145(5)(b) of the Act.

**Independent
examiner's statement**

I have completed my examination. I confirm that no material matters have come to my attention in connection with the examination which gives me cause to believe that in, any material respect:

- the accounting records were not kept in accordance with section 130 of the Charities Act; or
- the accounts did not accord with the accounting records; or
- the accounts did not comply with the applicable requirements concerning the form and content of accounts set out in the Charities (Accounts and Reports) Regulations 2008 other than any requirement that the accounts give a 'true and fair' view which is not a matter considered as part of an independent examination.

I have no concerns and have come across no other matters in connection with the examination to which attention should be drawn in this report in order to enable a proper understanding of the accounts to be reached.

Signed:

Date:

10th December 2022

Name:

Sue Bluteau

**Relevant professional
qualification(s) or body
(if any):**

CIMA

Address:

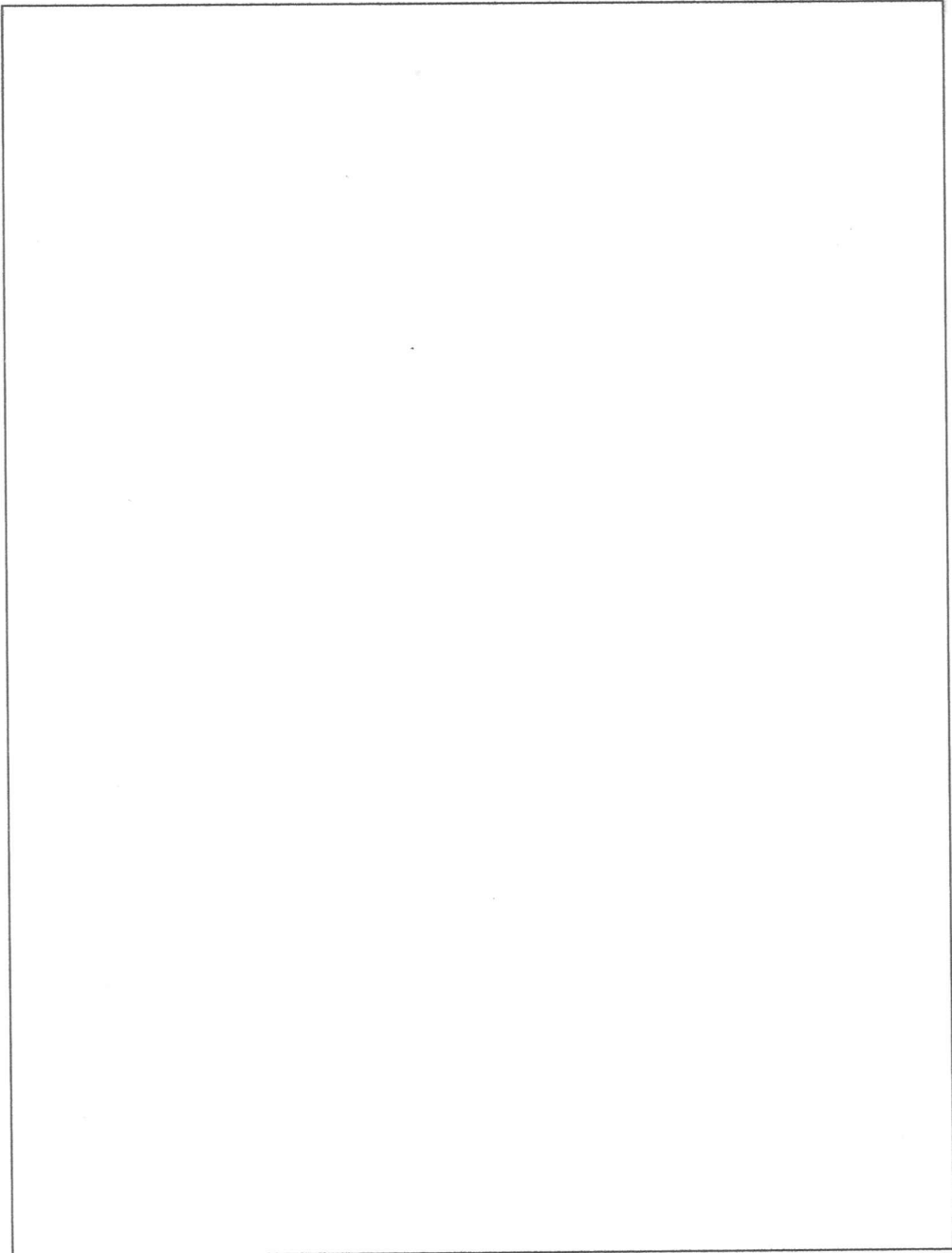
4 Charles Street

Warwick

CV34 5LE

Only complete if the examiner needs to highlight material matters of concern (see CC32, Independent examination of charity accounts: directions and guidance for examiners).

Give here brief details of any items that the examiner wishes to disclose.



ROYAL LEAMINGTON SPA BRASS AND THE BAND FACTORY

England & Wales - Charity number 1169205

Accounts



Royal Leamington Spa Brass & the Band Factory Annual Trustees Report 2020-2021

Aims and purposes

Royal Leamington Spa Brass and the Band Factory (RLSB &TBF) have the responsibility to promote community music making in Leamington Spa through involvement in a brass band or using the rehearsal facilities at The Band Factory.

Objectives and Activities

The charities objectives and activities are as follows:

- To provide musical education and activities for the community with particular emphasis, but not limited to, Leamington Spa and the surrounding area
- To provide rehearsal, meeting, performance, and workshop facilities for community groups with special emphasis on music and art groups
- To encourage the enjoyment of music and the arts by people of all ages with no discrimination of grounds of age, sex, race or disability

When planning for the next year RLSB &TBF have considered the guidance on public benefit and the objectives as set out in our constitution. Our charitable purpose falls under the advancement of arts, culture, heritage or science and also the advancement of community development. We are committed to encouraging as many people as possible in the local community to be involved in music making in Leamington through participating in the bands and choirs that use the Band Factory.

The Impact of Coronavirus on the Royal Leamington Spa Brass and The Band Factory 2020-2021

The charity was on hold for the entire period between April 2020-April 2021 due to the ongoing pandemic. We took advice from Brass Bands England regarding the stating up of bands and it was felt that the risks were too high to encourage the return of any music groups to the band room.

During this time, we were able to let out the facilities to a dance group whose usual rehearsal space was not in use.

The Development Bands were also able to start back a little earlier than the adult bands, with the appropriate social distancing, ventilation and cleaning routines were established in line with government and BBE guidelines.



The impact of the pandemic is yet to be calculated. Most people continued paying their membership subs to Royal Spa Brass.

The amount of money received from people hiring the Band Factory fell substantially due to the restrictions. Several of the groups that do use The Band Factory also lost members, and some found other venues.

Our biggest fundraising effort yearly has been The Leamington Beer Festival. This was postponed in 2020 and looks set to be postponed in 2021.

Maintenance

All essential maintenance was carried out to the building.

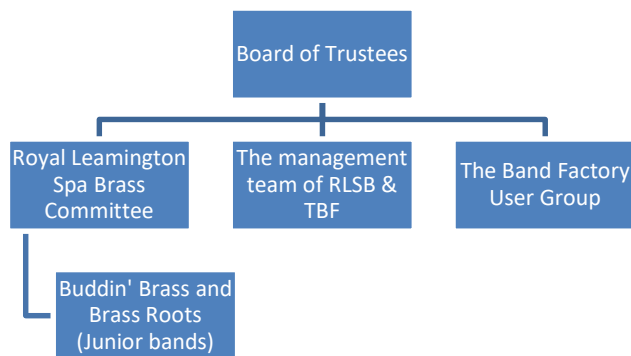
It was decided to take the opportunity whilst the Band Factory was out of order and the weather acceptable, to replace the roof on one of the buildings. This meant that we now have a waterproofed roof, and this has prevented any further ingress of water to that building. The charity did have the funds for this.

Events

There were no events held during 2020-21 due to Coronavirus

Structure, governance and management

RLSB and The Band Factory is structured as follows



Members of the Trustee board are all active members of RLSB. They were appointed at the AGM to launch the charity. They are responsible for the governance and strategic overview of the charity. They met four times (virtually) in 2020-2021.

The members are

- Annette Cairns (current chair)
- Andrew Webber (Treasurer)
- Andy Stevenson (Secretary)
- Kirsty Hooper
- Nicola Burke
- Mark Scott

The RLSB committee reports to the Board of trustees and is made up from members of the senior band. All are volunteers. The RLSB committee is responsible for making decisions on all matters of general concern and importance to the band including deciding how finances are to be spent, the maintenance of instruments and equipment, events, membership, safeguarding and data protection of members. They met three times last year and report into the Trustees

The management team of RLSB is responsible for all day-to-day matters arising from the band. They meet regularly after band practice to discuss matters regarding music, events, and attendance at events.

The Band Factory has a User Group made up from volunteers from all groups using the Band Factory. They are consulted on all elements of the building including fund raising and maintenance of the fabric of the building. A small group of people are responsible for the day to day running of the band factory and report directly to the Trustees. The charity purchased Hallmaster – an online room booking system, to enable effective resource management and invoicing.

Mark Phillips has been appointed as Project Manager for the development work to the Band Factory which will include the roof, improved toilet facilities and kitchenette. These works will be scheduled over the next three years as the fund-raising progresses.



Receipts and payments accounts

For the period from	Period start date 6th April 2020	To	Period end date 5th April 2021
----------------------------	-------------------------------------	-----------	-----------------------------------

Section A Receipts and payments

	Unrestricted funds to the nearest £	Restricted funds to the nearest £	Endowment funds to the nearest £	Total funds to the nearest £	Last year to the nearest £
A1 Receipts					
Subscriptions	6,972	-	-	6,972	7,748
Donations	5,784	-	-	5,784	1,440
Events	3,397	-	-	3,397	1,955
Christmas Events	-	-	-	-	2,800
Uniform Sales	-	-	-	-	403
Room Hire	6,307	-	-	6,307	9,157
Parking Rental	500	-	-	500	3,000
Loan Repayment	-	-	-	-	10,000
Bank Interest	5	-	-	5	18
Sub total (Gross income for AR)	22,965	-	-	22,965	36,521
A2 Asset and investment sales, (see table).					
	-	-	-	-	-
	-	-	-	-	-
Sub total	-	-	-	-	-
Total receipts	22,965	-	-	22,965	36,521
A3 Payments					
MD & Musician Fees	4,128	-	-	4,128	4,718
Misc & Sundry	42	-	-	42	280
Bank Charges	15	-	-	15	-
Events	-	-	-	-	385
Library	-	-	-	-	186
Insurance	1,155	-	-	1,155	1,380
Office & Marketing	-	-	-	-	-
Uniforms	-	-	-	-	554
Instrument Repair	110	-	-	110	-
Utilities	3,366	-	-	3,366	5,482
Telephone & Internet	388	-	-	388	-
Council Tax	3,106	-	-	3,106	3,481
Maintenance & Cleaning	31,503	-	-	31,503	7,109
Subscriptions	97	-	-	97	72
Loan Made	-	-	-	-	10,000
New Instruments	-	-	-	-	-
Training	-	-	-	-	120
Sub total	43,910	-	-	43,910	33,767
A4 Asset and investment purchases, (see table)					
	-	-	-	-	-
	-	-	-	-	-
Sub total	-	-	-	-	-
Total payments	43,910	-	-	43,910	33,767
Net of receipts/(payments)	- 20,945	-	-	- 20,945	2,754
A5 Transfers between funds	-	-	-	-	-
A6 Cash funds last year end	55,780	-	-	55,780	53,026
Cash funds this year end	34,835	-	-	34,835	55,780

Section B Statement of assets and liabilities at the end of the period

Categories	Details	Unrestricted funds to nearest £	Restricted funds to nearest £	Endowment funds to nearest £
B1 Cash funds	HSBC Current Account	24,748	-	-
	HSBC Deposit Account	10,087	-	-
			-	-
	Total cash funds	34,835	-	-
	(agree balances with receipts and payments account(s))	OK	OK	OK

	Unrestricted funds to nearest £	Restricted funds to nearest £	Endowment funds to nearest £
--	---------------------------------	-------------------------------	------------------------------

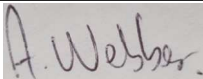

B2 Other monetary assets	Details			
		-	-	-
		-	-	-
		-	-	-
		-	-	-
		-	-	-
		-	-	-

B3 Investment assets	Details	Fund to which asset belongs	Cost (optional)	Current value (optional)
			-	-
			-	-
			-	-
			-	-
			-	-

B4 Assets retained for the charity's own use	Details	Fund to which asset belongs	Cost (optional)	Current value (optional)
			-	-
			-	-
			-	-
			-	-
			-	-
			-	-
			-	-
			-	-

B5 Liabilities	Details	Fund to which	Amount due	When due
			-	
			-	
			-	
			-	
			-	

Signed by one or two trustees on behalf of all the trustees

Signature	Print Name	Date of approval
	Andrew Webber - Treasurer	16/01/2022
	Annette Cairns - Chair	16/01/2022



Section A

Independent Examiner's Report

**Report to the trustees/
members of**

Charity Name
Royal Spa Brass & The Band Factory

**On accounts for the year
ended**

5th April 2021

**Charity no
(if any)**

1169205

Set out on pages

One and Two

I report to the trustees on my examination of the accounts of the above charity ("the Trust") for the year ended 05 / 04 /2021.

**Responsibilities and
basis of report**

As the charity's trustees, you are responsible for the preparation of the accounts in accordance with the requirements of the Charities Act 2011 ("the Act").

I report in respect of my examination of the Trust's accounts carried out under section 145 of the 2011 Act and in carrying out my examination, I have followed all the applicable Directions given by the Charity Commission under section 145(5)(b) of the Act.

**Independent
examiner's statement**

I have completed my examination. I confirm that no material matters have come to my attention in connection with the examination which gives me cause to believe that in, any material respect:

- the accounting records were not kept in accordance with section 130 of the Charities Act; or
- the accounts did not accord with the accounting records; or
- the accounts did not comply with the applicable requirements concerning the form and content of accounts set out in the Charities (Accounts and Reports) Regulations 2008 other than any requirement that the accounts give a 'true and fair' view which is not a matter considered as part of an independent examination.

I have no concerns and have come across no other matters in connection with the examination to which attention should be drawn in this report in order to enable a proper understanding of the accounts to be reached.

Signed:

Date:

16th January 2022

Name:

Sue Bluteau

**Relevant professional
qualification(s) or body
(if any):**

CIMA

Address:

4 Charles Street, Warwick. CV34 5LE