

REACH COMMUNITY PROJECTS

England & Wales · Charity number 1169108

Details

Status Registered

Legal form CIO

Registered 2016-09-09

Register [View on the Charity Commission register](#)

Contact

Address Reach Community Projects
Room 1
Wisdom Facilities Centre
42 Hollands Road
Haverhill
Suffolk

Phone 0800 009 6710

Email info@reachhaverhill.org.uk

Website www.reachhaverhill.org.uk

Activities

Objects: THE OBJECTS OF THE CIO ARE:FOR THE BENEFIT OF PEOPLE LIVING IN HAVERHILL AND THE SURROUNDING AREA, IN PARTICULAR THROUGH THE RELIEF OF THOSE LIVING IN POVERTY OR IN NEED BY REASON OF AGE, ILL-HEALTH OR OTHER DISADVANTAGE, IN SUCH WAYS AS THE TRUSTEES MAY FROM TIME TO TIME THINK FIT.

Activities: REACH assists clients in financial crisis, focusing on solutions for debt and hardship through a relational handholding approach. Food parcels deliver immediate crisis relief. Long-term interventions include debt advice, benefits assistance, housing aid, essential items. Our prevention work involves post intervention 1-2-1 wellbeing guidance, money management classes in schools, advocacy & policy.

Classification

- **How:** Provides Services, Provides Advocacy/advice/information
- **What:** The Prevention Or Relief Of Poverty
- **Who:** The General Public/mankind

Geography

- Cambridgeshire
- Essex
- Suffolk

Finances

Period end	Income	Expenditure	Assets	Employees
2024-09-30	£629,649	£658,400	£122,644	21
2023-09-30	£627,007	£561,960	£151,395	17
2022-09-30	£381,788	£473,739	-	-
2021-09-30	£396,393	£352,615	-	-
2020-09-30	£337,378	£267,474	-	-

Trustees

Name	Role	Appointed
ROY DUNCAN GRAHAM	Chair	2016-09-01
GAVIN PAUL JAMES ROWDEN		2016-09-01
Leigh David Carter		2024-05-01
Matthew Thomas Stevenson		2025-12-09

REACH COMMUNITY PROJECTS

England & Wales - Charity number 1169108

Accounts

Charity registration number: 1169108



Reach Community Projects (CIO)

Annual Report and Financial Statements

for the Year Ended 30 September 2024

Reach Community Projects (CIO)

Contents (continued)

Reference and Administrative Details	1
Trustees' Report	2 to 14
Independent Examiner's Report	15
Statement of Financial Activities	16
Balance Sheet	17
Notes to the Financial Statements	18 to 27

Reach Community Projects (CIO)

Reference and Administrative Details

Trustees	Roy Graham Gavin Rowden Kirsten Newble Leigh Carter
Senior Management / Leadership Team	Henry Wilson MBE Annetta Record
Charity Registration Number	1169108
Independent Examiner	Burdett King Accountancy Limited 8 The Hamiltons Newmarket Suffolk CB8 0NF

Reach Community Projects (CIO)

Trustees' Report

REACH Community Projects (CIO)

Trustees' Report

The trustees present the annual report together with the financial statements of the charity for the year ended 30 September 2024.

Trustees

Roy Graham

Alison Chorley (resigned during the year)

Gavin Rowden

Claire Darracott

Leigh Carter (joined during the year)

Kirsten Newble (joined during the year)

This year has been another year when I have been amazed by the results achieved by the dedicated staff that we have at Reach. Without their efforts we would not be able to achieve what we have seen so far. I want my thanks for their efforts to be at the front of everything that is said. Each time that I visit the offices the warm welcome and energy that greets me is so uplifting. Without their commitment to the ideals of the charity we would not be so successful in driving towards our vision of a flourishing, thriving community.

We have brought fundraising in-house and have upskilled team members to allow us to do more, and do it even better. We have implemented procedures to allow us to review how we are performing faster. We have moved roles around as the needs changed. And we have been strengthened by our volunteers who are constantly able to make a difference. And with all of the small changes we have not lost sight of the needs of the people we are here to help. I have been delighted in the way in which the entire team have step forwards in embracing the slight focus shift to a more proactive approach to addressing the issues we are all too aware of.

I wish to express my thanks to all those who are supporting the work of Reach. Without the many donations, and contributions we receive we would not be able help anyone. We never assume that we are going to get donations, and the excitement that flows around the office when news is shared is always fun.

Looking forwards to the next year we are aware of more changes that we will be making. We are actively trying to recruit more trustees to give us a wider skill base to help steer the ship. Our employed staff are investing more time in planning future strategies. We are building more bridges to other community resources that offer the support that Reach cannot provide, and so our team are able to provide more in their areas of expertise.

It is my hope that we will not need to be recruiting more staff as the years go on, as we are reducing the need for the services of Reach. However, we are planning for a future where that need still exists.

Roy Graham

Chair of Trustees

Reach Community Projects (CIO)

Trustees' Report (continued)

Flourishing, Thriving, Communities

We are a Haverhill based charity **proactively tackling poverty** and responding to financial hardship. It is an area of great need, characterised by high levels of social deprivation, debt and low income.

At REACH we believe that everyone deserves to live their life to the full. However, financial crisis and hardship related issues have a devastating effect on individual and family life. Debt, low income, and homelessness can lead to mental health problems, relationship breakdown, low aspiration, marginalisation, poor health and low self-esteem.

Our vision - is to see **flourishing, thriving** and resilient **communities** where lives are transformed, and short-term solutions to financial hardship are no longer needed.

Our mission - is to relieve and prevent financial hardship whilst tackling the causes and advocating for change.

Our key values:

- **We Are Compassionate** –We care about people and will always be generous with our time and empathy.
- **We Are Inclusive** –We are here for everyone who needs our services, without judgement.
- **We Are Relational** –We value building relationships with others; learning more about each other makes us more understanding, knowledgeable, and helpful.
- **We Show Honesty** –We are truthful and accountable, and we value growing trust through honesty.
- **We Are Proactive** –We are passionate and relentless in our mission and are not afraid to be a driving force for change.

Our priorities are:

- Lifting people out of hardship and financial crisis
- Preventing people from falling into hardship and financial crisis
- Advocating for change through influencing and local campaigning

Our four areas of work are:

- **Prevention:** Proactively preventing future financial hardship through education and strengthening bespoke support systems (e.g., community connector role)
- **Policy:** We listen to the voices of the most important people, our beneficiaries and take the voices to advocate for change through influencing, and collectively developing policy to tackle issues that are facing our local community (see Policy below)
- **Longer-term support:** Alleviating financial hardship through income maximisation and debt advice
- **Emergency aid:** Providing immediate short-term support to alleviate financial crisis

Our approach is to:

- Create **circles of support** to promote **flourishing families** and individuals
- Tackling the **root causes** and drivers of financial hardship
- **Campaigning and influencing for change** incorporating the voice of our community, especially the voice of lived experience

Together, Giving Hope!

2023-2024 will be a year remembered as a year when we ‘came of age’! We turned 18 on 12 October 2023. The year began with a huge investment of money (see ‘finances’ below), and although not intentional, a year of consolidation as we gained a greater clarity of vision.

Since 2005 when our community work began, we have traditionally positioned ourselves as a debt advice organisation, we also pick up other financial crisis-based problems such as homelessness and emergency food. We have continually expanded our debt advice service to meet a growing need in our communities. However, over the last couple of years, we have dipped our toe in the water of tackling societal issues through campaigning and education, in a bid to lift people out of poverty and reducing the need for our services.

Reach Community Projects (CIO)

Trustees' Report (continued)

This desire for social justice has intensified throughout the last year. Against a backdrop of stubbornly high emergency food parcels and an ever-increasing debt list, we, as part of our Pathfinder programme with the Trussell Trust have been exploring ways to end the need for foodbanks and emergency aid. To this end, we have been developing a new strategy that launches in the spring of 2025.

Flourishing people

REACH is an independent charity that believes in a relational handholding approach. This includes debt advice, benefit help, housing, emergency food and utility assistance and more. We will journey with people, however long it takes, providing practical help, advice, and support to tackle their current financial crisis.

Right at the heart of REACH is the belief that this relational approach to financial crisis or hardship, will contribute towards flourishing people. Which in turn, contributes towards a thriving Haverhill. It is through relationships that confidence and resilience is built and there is a better chance of getting out of financial hardship. We are measuring our impact too, through a number of different channels to ensure that we are making headway with this. (See 'The Challenges' section below)

A proactive approach

Since the early days of the foodbank in 2008, we have been keen to get to the root of the problem. If we can spare anyone the indignity of needing to come to us for emergency food, we will. We've also known since the pandemic that when our families had money in their pockets, they didn't come to us. Yet closer examination of our (former) strategy saw that our intentions didn't quite meet with our actions!

For example, all our energy and investment were geared towards helping families in debt, and yet the things we valued the most, i.e., prevention and advocacy were very under resourced. We also discovered that the service which potentially yielded the most value for our families - income maximisation, was mostly carried out by just one person. Worse, our outcomes were not always being recorded. This all changed in February (see 'Operations' below) when we restructured the people-facing part of our operations.

Unfortunately, the pandemic had a huge impact on the way in which we carried out our services. Most of our first-contact interactions had to be moved to the telephone or online, and we continued with this approach into the present. But following feedback from our beneficiaries and our own reflections, we began a forum to review our 'customer experience' in July 2024 that would put our 'guests' right at the heart of how we will operate into the future. (See Welcome Spaces in 'Future Plans' below).

We also stepped up our Education programme and introduced a Community Connector role to try and stem the flow of 'returners' to our services (see 'Operations' below).

Our new strategy - shifts our mindset from being a reactive organisation to proactive in order to achieve our ambitions set out in our vision statement. Our strategy will also move us towards a 'going deeper' approach, in order to help the families that we are supporting better. We will continue to be very focused on financial inclusion and financial capability, and we will build on our partnerships with organisations such as ONE Haverhill Partnership and others to help our families become more resilient and able to withstand future knocks.

Whilst we will still work in other towns, we will only go where there is a strong partner in the location and the finance has been provided. We will not be pursuing the expansion of our geographical borders.

Alongside our practical handholding support, we also use our experience, data, and research to feed into the bigger picture both locally and nationally to challenge some of the unfair structures that keep people trapped in poverty.

We recognise that we cannot do it all by ourselves and therefore rely on support and funding from our partners to deliver on this vision and mission. Partnerships include The Trussell Trust, Community Money Advice, Suffolk Mind, The Salvation Army, Haverhill and District Churches Together, Haverhill Town Council, West Suffolk Council and Suffolk County Council, Healthwatch Suffolk, Turning Point (substance abuse) GamCare, ONE Haverhill Partnership.

Reach Community Projects (CIO)

Trustees' Report (continued)

The majority of our core work is centred around Haverhill (and the surrounding villages) where we have our head office and foodbank warehouse. However, we have answered the call to work in partnership with partners in nearby towns such as Newmarket (The Racing Centre) and Halstead (Braintree Foodbank) to deliver our life changing debt advice and income maximisation (benefits).

Structure, governance and management

Nature of governing document

As a Charitable Incorporated Organisation (CIO) we have a Board of Trustees which meets on a regular basis. The board oversees and reviews the running of the charity including carefully monitoring our funding and our impact on the local community. New trustees are appointed based on the skills that they will bring to the trustee group.

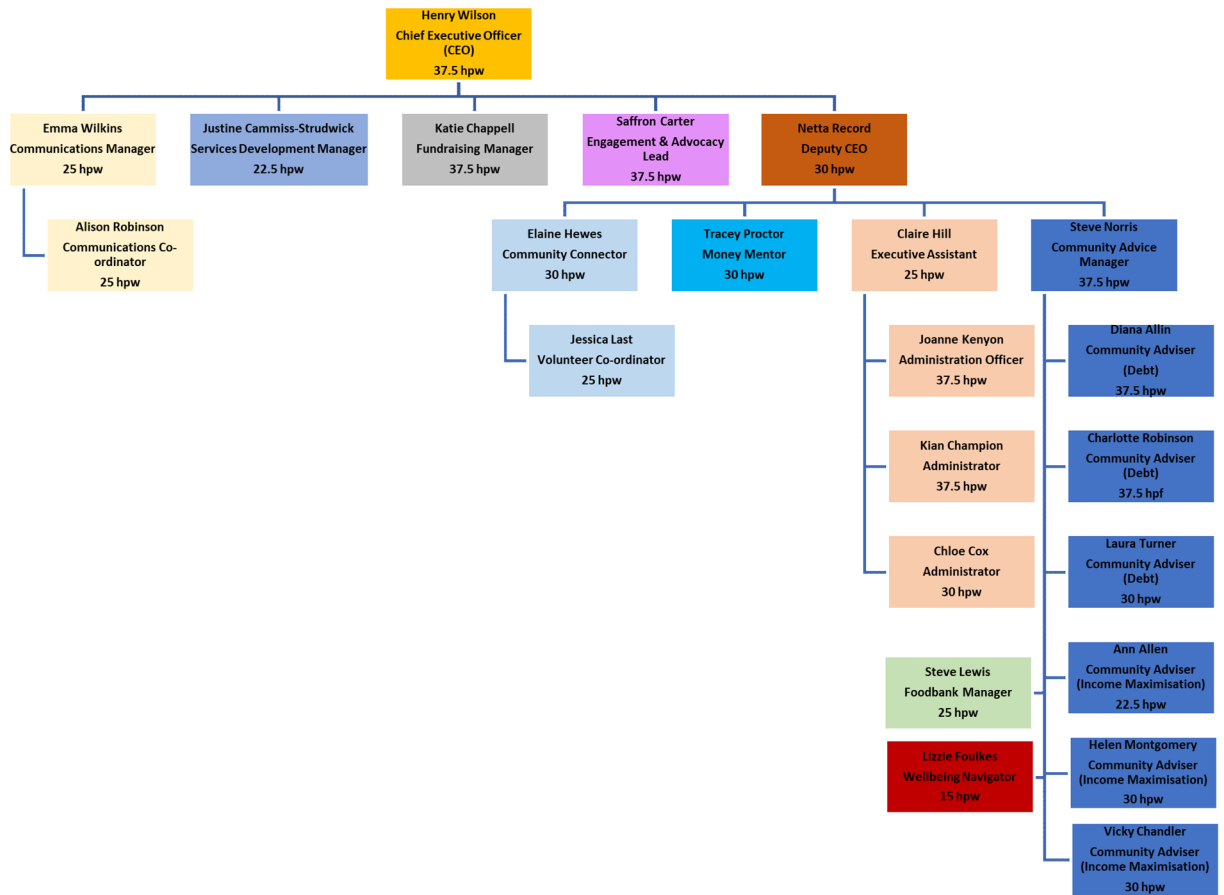
Management team

We have regular monthly management meetings that generally deal with operational matters. The team is made up of the CEO, Deputy CEO, and the department leaders/managers.

Staffing: As of the 30 September, we had 23 staff members.

Reach Community Projects (CIO)

Trustees' Report (continued)



Reach Community Projects (CIO)

Trustees' Report (continued)

New Staff/Changes

Having worked with our external fundraiser for the last 5 years, we took the decision to take on our own in-house fundraiser. Katie took on this role and became our 18th employee (on our 18th birthday).

Elaine moved from her role as the Volunteer Coordinator to become the Community Connector (see 'Operations' section below) and Jessica joined as her replacement.

Tracey moved from debt advice to the Educator role leaving a hole in the debt advice team. We took on 2 new debt advisors, Charlotte who had volunteered with us for a number of years and Laura.

Lizzie became our Wellbeing Navigator to oversee the collection points/drop-ins (see 'Welcome Spaces' below). We also created a new Income Maximisation advisor role (see 'Operations' below) and Vicky moved out of the cold foodbank warehouse to take on this role and Steve replaced her as the Foodbank Manager.

Volunteering

Our volunteering numbers continue to buck the trend regionally and nationally. Between 1 October 2023 and 30 September 2024, we had 99 regular volunteers complete 3,892 hours.

We had 6 regular Duke of Edinburgh Students come and volunteer in the Warehouse to complete their volunteering hours. We have 6 Granta students and two members of staff who come into the Warehouse once a week for an hour at a time, to help pack emergency food parcels. On average, these students completed 45 hours in the year to September 2024.

We had 2 different volunteers from Cheffins come into the Warehouse once a month (9 am-12 pm) for seven months. They started in March 2024 and finished in September 2024.

Operations

From February, we restructured our people facing work into 2 teams. The Community Outreach Advisors became the **Community Advice Team**. The CATs became either a Debt Advisor or an Income Maximisation Advisor. We now have a team of 3 Debt advisors and 3 Income Maximisation advisors, (4.5 Full Time Equivalent - FTE).

We also created a **Community Engagement Team** made up of the following 5 roles, Community Connector, Advocacy and Engagement, Education, Wellbeing Navigator and Volunteer Coordinator, (3 FTE).

Community Connector – One of the problems with a relational hand-holding approach, is the letting go, and pointing the client in the right direction, wasn't enough and some 'returned' with a new crisis. This role is intended to help people who have finished with our 'emergency' services and who find moving on difficult.

Now, once someone is 'complete' but still needs additional support, these are passed over to Elaine, (our Community Connector), who will support them (literally, take them in person) to other local support services. Some also take up the offer of our free cookery classes and client focus groups. Elaine now has a growing number of volunteers.

Collection points and Drop-Ins - At the close of the year on 30 September we were operating two models for face-to-face engagement. A food collection service in the afternoons, and a drop-in on a Monday morning and a Thursday afternoon.

Public benefit

The trustees confirm that they have complied with the requirements of section 17 of the Charities Act 2011 to have due regard to the public benefit guidance published by the Charity Commission for England and Wales.

Reach Community Projects (CIO)

Trustees' Report (continued)

Achievements and performance

From the Chief Executive Officer:

I begin with one of my real highlights of the year (see below for more of the highlights).

“Lipstick and earrings!”

Imagine the scenario... You've been happily married for near on 60 years, you've worked all your lives, and the man of your dreams isn't quite the man he once was. It's him alright and when he - Geoff, laughs and smiles it gives you glimpses of the past and reminds you of happier days when the children were growing up. But now, he looks the same, but he hardly knows who you are any more. It's not just the Alzheimer's and dementia that he is struggling with, but day-to-day life; he can't even get upstairs, you hardly ever get out, only when your daughter pops in, and that's just for some urgent bits and it's wearing you down.

A photograph on the sideboard reminds you of those solemn vows you made together all those years ago *“in sickness and in health...”* but it's so hard. If only you could afford to move to a bungalow so that Geoff doesn't have to go upstairs, but you can't even afford carers to lighten the load and what's more you're really struggling. Some days, you just wish it would all come to end, and then you spend the rest of the day beating yourself up for feeling so cruel!

Your daughter visits whenever she can, nearly every day, but she's got children and she's flying around taking them to dancing or football, and you really don't want to be a burden. *“She's got enough to do...”* But one day she suggests that you get in touch with REACH, *“who?”* you say, *“aren't they the people that do the foodbank... we're not that bad, we don't need food!”*

The seed has been planted, and you keep seeing the REACH leaflet everywhere you go, it's at Tesco, the doctor's, the thought just won't go away.

Then one day at a really low period, you're at wits end, and you pluck the courage to make the call... *“I don't need food”* you say to the lady on the other end of the line, *“I've seen a leaflet and wondered if you can help me and my husband.”* It's a well-practiced line you've been repeating to yourself for days now.

The lady says that someone will be in touch with you soon, and to your surprise, you receive a call a couple of days later from a lady called Helen. She says that she'll come and visit you at your home! And that's when Helen starts the work of bringing some much-needed hope back into Maureen's life.

During a series of visits to Maureen and Geoff's home (where Helen begins to build that all critical relationship, including joining in with the music therapy that brings Geoff alive) she discovers that they are not eligible for Pension Credit, but that may be entitled to other benefits like Attendance Allowance.

All told, Helen manages to reclaim a total of an additional £3,200 per annum! This is made up of Higher rate Attendance Allowance, Council Tax reduction, reduced water bills plus access to free carers giving Maureen that much needed respite.

A very emotional Maureen called Helen with the news, and that's when she said, that for first time in years, *“I've put earrings in and put on some lipstick!”*

She went on, *“You have changed my life! I just thought that you helped people with food (and furniture). I didn't realise all that you did. I don't know how I can ever thank you enough for your kindness and thoughtfulness. I thank God every day for you. You are all earth angel's and it's wonderful to have you in our community.”*

NB: Names changed to protect identity

Sadly, this is a very familiar story and as much as it's not the greatest financial outcome of the year, it means the world to her. It's given Maureen her life back, it's put dignity back into her life, she has experienced the benefits of active social justice.

Behind every £1 of the £1 million of financial gain we achieved last year*, there's a story of hope, a real person, a family who often feels isolated, hopeless and without a voice and it's our hearts desire to *‘speak up for those who cannot speak for themselves [and] ensure justice for those being crushed.’* (quote from the Bible).

**NB: In total we reclaimed for local families £1,003,613 in unclaimed benefits alone*

**NB: £1,876,548 made up from £840,000 of debt managed plus £1,036,458 of financial gains*

Reach Community Projects (CIO)

Trustees' Report (continued)

Additional Highlights include

- **Teaching 1400 young people budgeting** (see note on 'The 3 Ps - Prevention' below)
- **Securing just under £½ million of investment over the next 2-3 years** (see 'Our Finances' below)

Our Key Numbers

- **2168 families were helped** with 2642 issues. This includes 1037 issues regarding emergency food requests. There were 4107 beneficiaries of which 1466 were children (up from 1167 last year or 25% increase)
- **203 families were helped with debt**, a total of 427 beneficiaries (248 Adults & 179 Children).
- **£1,036,458 of financial gains**, this is made up of £1,003,613 of actual financial gain for 158 families and a further £32,845 of client aid
- **1411 young people** were taught financial education
- **Sadly, our foodbank project numbers remain stubbornly high** with a new record number of people fed for the year – 2100. It is a very small increase on last years' figure of 2037 people fed. In total, 1037 food boxes were given out, 1335 adults and 765 children were fed

The 3 P's

In February we launched what we called the 3Ps:

- Prevention
- Policy
- Pounds in Pockets

Prevention – this has mainly taken the form of a Schools' Financial Literacy programme. We set Tracey (our Educator) the task of teaching 1000 young people financial education. Not only did she reach it but smashed it with a total 1411 young people taught, with some excellent feedback from the children and the teachers.

In addition to this, we also taught around 100 adults in various projects around town, including residents at supported housing projects run by Sanctuary Housing, Restore, a domestic abuse charity, West Suffolk Training (college) and just as the year was coming to an end – Highpoint Prison, where we taught financial literacy to 36 inmates that were due to be released.

Policy - Saffron (our Advocacy and Engagement Lead) and her team of volunteers were tasked with hearing the voices of our very special guests on the delivery of our projects. The focus groups continue along with other means of gathering data, such as feedback texts from our beneficiaries.

Not only that, but Saffron has also continued her engagement with our MP, (including hosting a West Suffolk Constituency Election Hustings in the run up to the General Election. Councillors from every tier. Schools, GP's health services and many others. Saffron is regularly contacted by the media for comment on varying subject matters. Our reputation as a trusted organisation has grown significantly.

Pounds in Pockets – We have known since the pandemic, that when our families have money in their pockets, they don't come to us! Last year, we recorded £288,000 of unclaimed benefits, and therefore, we tasked the team in finding 'the Missing Millions of Haverhill' (with no expectation that they would!)

We ran campaigns, press releases, spoke on the radio, put-up posters around the town, GP's, supermarkets etc., letting people know that they might be eligible for some additional support, and therefore we were absolutely thrilled to break £1 million mark.* We remain deeply passionate and committed to this project.

**NB: We carried out 158 successful benefit claims for 211 adults, including 67 people of pension age, and 211 children.*

In other areas of our work

Debt Advice- Because of our proactive stance to tackling hardship, our approach is to very gently ask all that come to us, especially those in need of emergency assistance, about their income. We do this to ensure that they are receiving everything they are entitled to, and we will offer to help them to explore this further. We also ask if they have any debt and offer support. Last year alone, a record number of 228 people responded that they did. However, for one reason or another, 91 chose not to take us up on our offer, but 137 did!

Reach Community Projects (CIO)

Trustees' Report (continued)

Throughout the year, we worked on 203 debt cases, 137 new cases for the year, plus 66 that we carried over from the previous year.

In total, we produced outcomes for **83 families with £840,272 worth of debt**. (427 beneficiaries; 248 adults and 179 children). We brought 38 cases to full completion with an actual debt outcome of £293,464 and a further 45 cases who felt confident enough, once we had provided them with the necessary figures, to take it on themselves. This figure amounted to a projected debt outcome of £546,808. We are carrying over 120 cases into our new financial year.

Of the 83 families:

25 (30%) became free from the misery of grinding debt! - 21 had a Debt Relief Order (DRO), 1 had a bankruptcy and 3 had their debts written off

And the remaining 58 (70%) secured a Debt Payment Plan - This includes those who took on their own DPP during the year

Newmarket Project - We secured office space at the Racing Centre! This has made all the difference to Diana and means that she is able to see more people. The funding remains a challenge, but momentum is growing and so has the number of donations coming through.

In total:

- There were 281 cases helping 423 people, including 172 children. She assisted 39 individuals with managing multiple debts, supported 87 people with benefits, and helped 44 clients with aid such as energy or shopping vouchers. Additionally, she has addressed numerous other issues along the way.

North Essex and Sudbury Projects - We had started to work with Uttlesford Foodbank, but this didn't work out. In the meantime, we were invited to work alongside Braintree Foodbank in the Halstead area, and Justine (our development manager) began this project at the beginning of the year. Funding for the project was not forthcoming, and the project was paused in January. Braintree District Council invited to apply for funding in April with a view to restarting the project. However, the positive funding outcome was not agreed until October 2024, after our year end. The project in Sudbury came to an end when the former directors of the debt advice project retired.

The Challenges

Fundraising - This was one of our biggest challenges throughout last year. We took the decision to invest in our own in-house fundraiser in July 2023. Furthermore, we decided to look for a person who may not have fundraising experience, but who had a passion for the vision and a desire to make a difference in the local community. The Fundraising Team at Trussell Trust agreed to mentor and carry out the training required to bring someone up to speed, while we continued to apply for a limited number of grants, to tide us over. Katie joined us in January and hit the ground running and even began to bring a return on our investment as early as March. However, there was a lag in the pipeline, and we hit a very dry season from July through to September when we had to draw on our reserves.

The good news is, that when it rained, boy did it rain when we received a double blessing of 2 lots of £40,000 on 16 October! (2024-25 year). This meant that we were able to replenish our reserves within 3 weeks of the year that we are currently reporting on.

Katie has grown in confidence and proving to be a huge asset to REACH.

Impact Measuring – We are using a version of the Edinburgh-Warwick scale to measure our impact. The team find that it is very easy to record the scores at the first visit, the problem lies with gaining the second score 3-6 months after the first. We do have some scores, but there is work to do to fine tune this and this is a work in progress.

The following table is based on just completed clients.

Reach Community Projects (CIO)

Trustees' Report (continued)

Category	1st Score Average	2nd Score Average	Percentage Increase
I've been feeling optimistic about the future	1.8	3.5	94%
I've been feeling useful	2.1	3.8	81%
I've been feeling relaxed	2	2.8	40%
I've been dealing with problems well	2	3	50%
I've been thinking clearly	2.1	3.2	52%
I've been feeling close to other people	2.6	3.2	23%
I've been able to make up my own mind about things	2.3	3.2	39%

Scored 1-5, 1 being the lowest and 5 being the highest

We have also introduced a feedback process via Text Magic where clients accessing our service are able to respond on how we did, and whether they would be open to receive a call for further feedback. 27 agreed to be contacted, but in the end 23 agreed to speak to our team. The results of this feedback can be found on our website at the following address:

https://www.reachcp.org.uk/Articles/644324/Reach_Haverhill/Reports/Other_reports.aspx

Our finances

Our finances received a huge boost through a 3-year grant of £343,000 from the Lottery that began on 1 October 2023. We also received a further £120,000 over the next 18 months as part of our Pathfinder programme. Despite the investment, our management accounts for the y/e 30 September showed that we received an income of approximately £578,000. Our expenditure was around £622,000.

As mentioned already in our challenges section, there was a lag in our funding pipeline, some of the grants we anticipated did not materialise throughout the year, plus we invested some of our surplus from the previous years to improve our services. As a result of our shortfall for the year, we have made changes to our operations, including introducing measures that will identify problems sooner. (See 'Future Plans' below).

On a very positive note, we saw an increase in individual/regular/online and one-off giving that amounted to £185,000 (or 32% of our income). This is up from £135,000 and something that we are building on, whilst maintaining our grant funding!

Our budget

We have an approximate budget for the forthcoming year of approximately £630,000.

Special Thanks

We are indebted to all those who have assisted us in our mission to lift families out of financial crisis and hardship. Thank you to our many volunteers who give their time on a regular basis. Thank you too to our partners, these include Community Action Suffolk, The Community Fund, Trussell Trust, River of Life Community Church, Havebury Housing Partnership, Utilita Giving, West Suffolk Council, South Cambridgeshire District Council, Suffolk Community Foundation, The Britford Bridge Trust, Haverhill Town Council, Acts 435, Souter Charitable Trust, Community Money Advice, Braintree District Council, ONE Haverhill Partnership, Haverhill Methodist Church, St Mary's Church, Haverhill, The Salvation Army, Cambridgeshire Community Foundation, The Rope Trust, Suffolk County Council, Garfield Weston, Essex Community Foundation, The Childwick Trust, Godolphin, The Racing Centre (Newmarket), and of course, those that wish to remain anonymous. There are many more individual donors, businesses, community groups, churches and schools who have all contributed to make 2023-24 a much easier task than we could ever have imagined! Thank you.

Reach Community Projects (CIO)

Trustees' Report (continued)

Future Plans

Postscript – 1 October 2024 to 30 April 2025 (to date)

RaFT - In early October, following the shortfall in our accounts, we began to review ways in which we can spot bumps in the road going forward, and be better prepared in the future. We worked with a retired business consultant on a voluntary basis and began to establish a strategic team. A team of 5 of us who had worked on the strategic plan met monthly to come up with a Terms of Reference, (and a name!) The REACH Forward Team – or RaFT for short commenced in April 2025.

This team will be meeting monthly to assess current data, the KPI's set by the management team to ensure that we are on track with our key objectives, and to look at the SWOTs before us and formulate strategies for the future. This team is made up of the CEO and Deputy CEO and those identified with a strategic mindset. We do invite additional team members as and when necessary.

Double blessing – Having had to dip into our reserves at the end of the financial year, we set ourselves a target to repay this back by Christmas. On 16th October, we received 2 lots of £40,000! The first was for an unexpected grant in North Essex, and the second was from a very generous donor. Therefore, the reserves were replenished by 17th October!

Welcome Spaces – are the new way of accessing our services, face to face, across Haverhill. This is in addition to our volunteer led telephone triage service during the mornings. These are overseen by the Wellbeing Navigator and a team of volunteers. We meet in 5 separate locations, Monday to Friday between 2 and 4pm. These replace the food collection points and the extra drop-ins that were taking place alongside the collection points. They launched on 1st February 2025.

May 2025 and beyond

Our key objectives include the following:

- Establish our Strategic Development group – RaFT
- Establish and build on our Welcome Spaces from the Spring of 2025
- Launch our new strategy in May 2025
- Continue to improve our impact measurement
- Continue our client focus groups to inform service development
- Continue to develop partnerships with to bring increased mental health services into Haverhill
- Consolidate our services to better promote flourishing people and a thriving Haverhill. This may include trimming back on our services
- Bolster our Fundraising and Communications team to better withstand some of the funding challenges that charities are facing. Ideally, we would like to see this in place before July 2025
- Establish a volunteer led Community Fundraising team in the Spring of 2025

Henry Wilson MBE
Chief Executive Officer

Reach Community Projects (CIO)

Trustees' Report (continued)

Financial review

Policy on reserves

Reserves are that part of a charity's unrestricted funds that is freely available to spend on any of the charity's purposes. REACH maintains free unrestricted reserves:

- To provide a level of working capital that protects the continuity of its core work
- To provide a level of funding for unexpected opportunities
- To provide cover for risks such as unforeseen expenditure or unanticipated loss of income.

We endeavour to maintain 3 months of staffing and running costs.

The board of trustees will review the above criteria with reference to REACH's strategy and Annual Plan and determine the target level of free reserves to meet these.

The board of trustees will at times designate funds from free reserves for significant project costs or replacement of major assets.

The accounts set out on the following pages reflect the activities of the charity.

The annual report was approved by the trustees of the charity on 4 June 2025 and signed on its behalf by:


.....

Roy Graham
Chairman and trustee

Reach Community Projects (CIO)

Trustees' Report (continued)

Statement of Trustees' Responsibilities

The trustees are responsible for preparing the trustees' report and the financial statements in accordance with the United Kingdom Accounting Standards (United Kingdom Generally Accepted Accounting Practice) and applicable law and regulations.

The law applicable to charities requires the trustees to prepare financial statements for each financial year which give a true and fair view of the state of affairs of the charity and of the incoming resources and application of resources of the charity for that period. In preparing these financial statements, the trustees are required to:

- select suitable accounting policies and then apply them consistently;
- observe the methods and principles in the Charities SORP;
- make judgements and estimates that are reasonable and prudent;
- state whether applicable accounting standards have been followed, subject to any material departures disclosed and explained in the financial statements; and
- prepare the financial statements on the going concern basis unless it is inappropriate to presume that the charity will continue in business.

The trustees are responsible for keeping proper accounting records that disclose with reasonable accuracy at any time the financial position of the charity and enable them to ensure that the financial statements comply with the Charities Act 2011, the Charities (Accounts and Reports) Regulations 2008, and the provisions of the constitution. The trustees are also responsible for safeguarding the assets of the charity and hence for taking reasonable steps for the prevention and detection of fraud and other irregularities.

Reach Community Projects (CIO)

Independent Examiner's Report to the trustees of Reach Community Projects (CIO)

I report to the trustees on my examination of the accounts of Reach Community Projects (CIO) for the year ended 30 September 2024.

Responsibilities and basis of report

As the charity trustees of Reach Community Projects (CIO) you are responsible for the preparation of the accounts in accordance with the requirements of the Charities Act 2011 ('the Act').

I report in respect of my examination of the Reach Community Projects (CIO)'s accounts carried out under section 145 of the 2011 Act and in carrying out my examination I have followed all the applicable Directions given by the Charity Commission under section 145(5)(b) of the Act.

Independent examiner's statement

Since Reach Community Projects (CIO)'s gross income exceeded £250,000 your examiner must be a member of a body listed in section 145 of the 2011 Act. I confirm that I am qualified to undertake the examination because I am a member of Chartered Certified Accountant, which is one of the listed bodies.

I have completed my examination. I confirm that no material matters have come to my attention in connection with the examination giving me cause to believe that in any material respect:

1. accounting records were not kept in respect of Reach Community Projects (CIO) as required by section 130 of the Act; or
2. the accounts do not accord with those records; or
3. the accounts do not comply with the accounting requirements concerning the form and content of accounts set out in the Charities (Accounts and Reports) Regulations 2008 other than any requirement that the accounts give a 'true and fair view' which is not a matter considered as part of an independent examination.

I have no concerns and have come across no other matters in connection with the examination to which attention should be drawn in this report in order to enable a proper understanding of the accounts to be reached.



.....
Lisa King
Chartered Certified Accountant

8 The Hamiltons
Newmarket
Suffolk
CB8 0NF

4 June 2025

Reach Community Projects (CIO)

Statement of Financial Activities for the Year Ended 30 September 2024

	Note	Unrestricted funds £	Restricted funds £	Total 2024 £
Income and Endowments from:				
Donations and legacies	2	230,925	395,672	626,597
Investment income	3	3,052	-	3,052
Total income		<u>233,977</u>	<u>395,672</u>	<u>629,649</u>
Expenditure on:				
Raising funds		-	(17,297)	(17,297)
Charitable activities		(58,014)	(273,871)	(331,885)
Other expenditure		<u>(285,714)</u>	<u>(23,504)</u>	<u>(309,218)</u>
Total expenditure		<u>(343,728)</u>	<u>(314,672)</u>	<u>(658,400)</u>
Net (expenditure)/income		<u>(109,751)</u>	<u>81,000</u>	<u>(28,751)</u>
Net movement in funds		(109,751)	81,000	(28,751)
Reconciliation of funds				
Total funds brought forward		<u>111,303</u>	<u>40,092</u>	<u>151,395</u>
Total funds carried forward	13	<u>1,552</u>	<u>121,092</u>	<u>122,644</u>
	Note	Unrestricted funds £	Restricted funds £	Total 2023 £
Income and Endowments from:				
Donations and legacies		409,083	215,712	624,795
Investment income	3	-	12	12
Other income		<u>2,200</u>	-	<u>2,200</u>
Total income		<u>411,283</u>	<u>215,724</u>	<u>627,007</u>
Expenditure on:				
Raising funds		(357)	(30,166)	(30,523)
Charitable activities		(68,453)	(228,244)	(296,697)
Other expenditure		<u>(181,632)</u>	<u>(53,108)</u>	<u>(234,740)</u>
Total expenditure		<u>(250,442)</u>	<u>(311,518)</u>	<u>(561,960)</u>
Net income/(expenditure)		160,841	(95,794)	65,047
Gross transfers between funds		<u>(63,138)</u>	<u>63,138</u>	<u>-</u>
Net movement in funds		97,703	(32,656)	65,047
Reconciliation of funds				
Total funds brought forward		<u>13,600</u>	<u>72,748</u>	<u>86,348</u>
Total funds carried forward	13	<u>111,303</u>	<u>40,092</u>	<u>151,395</u>

All of the charity's activities derive from continuing operations during the above two periods.

Reach Community Projects (CIO)
(Registration number: 1169108)
Balance Sheet as at 30 September 2024

	Note	2024 £	2023 £
Fixed assets			
Tangible assets	9	12,940	12,215
Current assets			
Cash at bank and in hand	10	132,112	196,160
Creditors: Amounts falling due within one year	11	<u>(22,408)</u>	<u>(16,032)</u>
Net current assets		<u>109,704</u>	<u>180,128</u>
Total assets less current liabilities		122,644	192,343
Creditors: Amounts falling due after more than one year	12	<u>-</u>	<u>(40,948)</u>
Net assets		<u>122,644</u>	<u>151,395</u>
Funds of the charity:			
Restricted income funds			
Restricted funds		121,092	40,092
Unrestricted income funds			
Unrestricted funds		<u>1,552</u>	<u>111,303</u>
Total funds	13	<u>122,644</u>	<u>151,395</u>

The financial statements on pages 16 to 27 were approved by the trustees, and authorised for issue on 4 June 2025 and signed on their behalf by:

.....
Roy Graham
Chairman and trustee

Reach Community Projects (CIO)

Notes to the Financial Statements for the Year Ended 30 September 2024

1 Accounting policies

Statement of compliance

The financial statements have been prepared in accordance with the second edition of the Charities Statement of Recommended Practice issued in October 2019, the Financial Reporting Standard applicable in the United Kingdom and Republic of Ireland (FRS 102) and the Charities Act 2011.

Basis of preparation

Reach Community Projects (CIO) meets the definition of a public benefit entity under FRS 102. The accounts (financial statements) have been prepared under the historical cost convention with items recognised at cost or transaction value unless otherwise stated in the relevant note(s) to these accounts.

Going concern

The trustees consider that there are no material uncertainties about the charity's ability to continue as a going concern.

Income and endowments

Voluntary income including donations, gifts, legacies and grants that provide core funding or are of a general nature are recognised when the charity has entitlement to the income, it is probable that the income will be received and the amount can be measured with sufficient reliability.

Donations and legacies

Donations and legacies are recognised on a receivable basis when receipt is probable and the amount can be reliably measured.

Grants receivable

Grants are recognised when the charity has an entitlement to the funds and any conditions linked to the grants have been met. Where performance conditions are attached to the grant and are yet to be met, the income is recognised as a liability and included on the balance sheet as deferred income to be released.

Investment income

Dividends are recognised once the dividend has been declared and notification has been received of the dividend due.

Expenditure

All expenditure is recognised once there is a legal or constructive obligation to that expenditure, it is probable settlement is required and the amount can be measured reliably. All costs are allocated to the applicable expenditure heading that aggregate similar costs to that category. Where costs cannot be directly attributed to particular headings they have been allocated on a basis consistent with the use of resources, with central staff costs allocated on the basis of time spent, and depreciation charges allocated on the portion of the asset's use. Other support costs are allocated based on the spread of staff costs.

Raising funds

These are costs incurred in attracting voluntary income, the management of investments and those incurred in trading activities that raise funds.

Reach Community Projects (CIO)

Notes to the Financial Statements for the Year Ended 30 September 2024 (continued)

Charitable activities

Charitable expenditure comprises those costs incurred by the charity in the delivery of its activities and services for its beneficiaries. It includes both costs that can be allocated directly to such activities and those costs of an indirect nature necessary to support them.

Governance costs

These include the costs attributable to the charity's compliance with constitutional and statutory requirements, including audit, strategic management and trustees meetings and reimbursed expenses.

Taxation

The charity is considered to pass the tests set out in Paragraph 1 Schedule 6 of the Finance Act 2010 and therefore it meets the definition of a charitable company for UK corporation tax purposes. Accordingly, the charity is potentially exempt from taxation in respect of income or capital gains received within categories covered by Chapter 3 Part 11 of the Corporation Tax Act 2010 or Section 256 of the Taxation of Chargeable Gains Act 1992, to the extent that such income or gains are applied exclusively to charitable purposes.

Tangible fixed assets

Individual fixed assets costing £100.00 or more are initially recorded at cost, less any subsequent accumulated depreciation and subsequent accumulated impairment losses.

Depreciation and amortisation

Depreciation is provided on tangible fixed assets so as to write off the cost or valuation, less any estimated residual value, over their expected useful economic life.

Cash and cash equivalents

Cash and cash equivalents comprise cash on hand and call deposits, and other short-term highly liquid investments that are readily convertible to a known amount of cash and are subject to an insignificant risk of change in value.

Trade creditors

Trade creditors are obligations to pay for goods or services that have been acquired in the ordinary course of business from suppliers. Accounts payable are classified as current liabilities if they do not have an unconditional right, at the end of the reporting period, to defer settlement of the creditor for at least twelve months after the reporting date. If there is an unconditional right to defer settlement for at least twelve months after the reporting date, they are presented as non-current liabilities.

Borrowings

Interest-bearing borrowings are initially recorded at fair value, net of transaction costs. Interest-bearing borrowings are subsequently carried at amortised cost, with the difference between the proceeds, net of transaction costs, and the amount due on redemption being recognised as a charge to the Statement of Financial Activities over the period of the relevant borrowing.

Interest expense is recognised on the basis of the effective interest method and is included in interest payable and similar charges.

Borrowings are classified as current liabilities unless the charity has an unconditional right to defer settlement of the liability for at least twelve months after the reporting date.

Reach Community Projects (CIO)

Notes to the Financial Statements for the Year Ended 30 September 2024 (continued)

Fund structure

Unrestricted income funds are general funds that are available for use at the trustees discretion in furtherance of the objectives of the charity.

Restricted income funds are those donated for use in a particular area or for specific purposes, the use of which is restricted to that area or purpose.

Pensions and other post retirement obligations

The charity operates a defined contribution pension scheme which is a pension plan under which fixed contributions are paid into a pension fund and the charity has no legal or constructive obligation to pay further contributions even if the fund does not hold sufficient assets to pay all employees the benefits relating to employee service in the current and prior periods.

Contributions to defined contribution plans are recognised in the Statement of Financial Activities when they are due. If contribution payments exceed the contribution due for service, the excess is recognised as a prepayment.

Financial instruments

Classification

Financial assets and financial liabilities are recognised when the charity becomes a party to the contractual provisions of the instrument.

Financial liabilities and equity instruments are classified according to the substance of the contractual arrangements entered into. An equity instrument is any contract that evidences a residual interest in the assets of the charity after deducting all of its liabilities.

Recognition and measurement

All financial assets and liabilities are initially measured at transaction price (including transaction costs), except for those financial assets classified as at fair value through profit or loss, which are initially measured at fair value (which is normally the transaction price excluding transaction costs), unless the arrangement constitutes a financing transaction. If an arrangement constitutes a financing transaction, the financial asset or financial liability is measured at the present value of the future payments discounted at a market rate of interest for a similar debt instrument.

Financial assets and liabilities are only offset in the statement of financial position when, and only when there exists a legally enforceable right to set off the recognised amounts and the charity intends either to settle on a net basis, or to realise the asset and settle the liability simultaneously.

Financial assets are derecognised when and only when a) the contractual rights to the cash flows from the financial asset expire or are settled, b) the charity transfers to another party substantially all of the risks and rewards of ownership of the financial asset, or c) the charity, despite having retained some, but not all, significant risks and rewards of ownership, has transferred control of the asset to another party.

Financial liabilities are derecognised only when the obligation specified in the contract is discharged, cancelled or expires.

Reach Community Projects (CIO)

Notes to the Financial Statements for the Year Ended 30 September 2024 (continued)

Debt instruments

Debt instruments which meet the following conditions are subsequently measured at amortised cost using the effective interest method:

(a) The contractual return to the holder is (i) a fixed amount; (ii) a positive fixed rate or a positive variable rate; or (iii) a combination of a positive or a negative fixed rate and a positive variable rate.

(b) The contract may provide for repayments of the principal or the return to the holder (but not both) to be linked to a single relevant observable index of general price inflation of the currency in which the debt instrument is denominated, provided such links are not leveraged.

(c) The contract may provide for a determinable variation of the return to the holder during the life of the instrument, provided that (i) the new rate satisfies condition (a) and the variation is not contingent on future events other than (1) a change of a contractual variable rate; (2) to protect the holder against credit deterioration of the issuer; (3) changes in levies applied by a central bank or arising from changes in relevant taxation or law; or (ii) the new rate is a market rate of interest and satisfies condition (a).

(d) There is no contractual provision that could, by its terms, result in the holder losing the principal amount or any interest attributable to the current period or prior periods.

(e) Contractual provisions that permit the issuer to prepay a debt instrument or permit the holder to put it back to the issuer before maturity are not contingent on future events, other than to protect the holder against the credit deterioration of the issuer or a change in control of the issuer, or to protect the holder or issuer against changes in levies applied by a central bank or arising from changes in relevant taxation or law.

(f) Contractual provisions may permit the extension of the term of the debt instrument, provided that the return to the holder and any other contractual provisions applicable during the extended term satisfy the conditions of paragraphs (a) to (c).

Debt instruments that are classified as payable or receivable within one year on initial recognition and which meet the above conditions are measured at the undiscounted amount of the cash or other consideration expected to be paid or received, net of impairment.

With the exception of some hedging instruments, other debt instruments not meeting these conditions are measured at fair value through profit or loss.

Commitments to make and receive loans which meet the conditions mentioned above are measured at cost (which may be nil) less impairment.

Investments

Investments in non-convertible preference shares and non-puttable ordinary or preference shares (where shares are publicly traded or their fair value is reliably measurable) are measured at fair value through profit or loss. Where fair value cannot be measured reliably, investments are measured at cost less impairment.

Investments in subsidiaries and associates are measured at cost less impairment. For investments in subsidiaries acquired for consideration including the issue of shares qualifying for merger relief, cost is measured by reference to the nominal value of the shares issued plus fair value of other consideration. Any premium is ignored.

Reach Community Projects (CIO)

Notes to the Financial Statements for the Year Ended 30 September 2024 (continued)

Fair value measurement

The best evidence of fair value is a quoted price for an identical asset in an active market. When quoted prices are unavailable, the price of a recent transaction for an identical asset provides evidence of fair value as long as there has not been a significant change in economic circumstances or a significant lapse of time since the transaction took place. If the market is not active and recent transactions of an identical asset on their own are not a good estimate of fair value, the fair value is estimated by using a valuation technique.

2 Income from donations and legacies

	Unrestricted funds General £	Restricted funds £	Total 2024 £	Total 2023 £
Donations and legacies;				
Online donations	14,431	-	14,431	14,910
One off gifts	68,449	13,740	82,189	82,478
Gift aid reclaimed	10,650	-	10,650	9,914
Grants, including capital grants;				
Core funding grants	97,006	379,668	476,674	475,930
Regular giving and capital donations	40,389	2,264	42,653	41,563
	230,925	395,672	626,597	624,795

3 Investment income

	Unrestricted funds General £	Total 2024 £	Total 2023 £
Interest receivable and similar income;			
Interest receivable on bank deposits	3,052	3,052	12

Reach Community Projects (CIO)

Notes to the Financial Statements for the Year Ended 30 September 2024 (continued)

4 Analysis of governance and support costs

Governance costs

	Unrestricted funds General £	Total funds £
Independent examiner fees		
Examination of the financial statements	625	625
Depreciation, amortisation and other similar costs	<u>3,035</u>	<u>3,035</u>
Total for 2024	<u><u>3,660</u></u>	<u><u>3,660</u></u>
Total for 2023	<u><u>3,078</u></u>	<u><u>3,078</u></u>

5 Trustees remuneration and expenses

No trustees, nor any persons connected with them, have received any remuneration from the charity during the year.

No trustees have received any reimbursed expenses or any other benefits from the charity during the year.

Reach Community Projects (CIO)

Notes to the Financial Statements for the Year Ended 30 September 2024 (continued)

6 Staff costs

The aggregate payroll costs were as follows:

	2024 £	2023 £
Staff costs during the year were:		
Wages and salaries	457,152	364,790
Social security costs	33,104	22,331
Pension costs	12,591	9,109
Other staff costs	19,878	9,740
	<u>522,725</u>	<u>405,970</u>

21 (2023 - 17) of the above employees participated in the Defined Contribution Pension Schemes.

Contributions to the employee pension schemes for the year totalled £12,591 (2023 - £9,109).

No employee received emoluments of more than £60,000 during the year.

7 Independent examiner's remuneration

	2024 £	2023 £
Examination of the financial statements	<u>625</u>	<u>600</u>

Reach Community Projects (CIO)

Notes to the Financial Statements for the Year Ended 30 September 2024 (continued)

8 Taxation

The charity is a registered charity and is therefore exempt from taxation.

9 Tangible fixed assets

	Furniture and equipment £	Motor vehicles £	Total £
Cost			
At 1 October 2023	27,846	10,000	37,846
Additions	3,760	-	3,760
At 30 September 2024	31,606	10,000	41,606
Depreciation			
At 1 October 2023	23,773	1,858	25,631
Charge for the year	1,035	2,000	3,035
At 30 September 2024	24,808	3,858	28,666
Net book value			
At 30 September 2024	6,798	6,142	12,940
At 30 September 2023	4,073	8,142	12,215

10 Cash and cash equivalents

	2024 £	2023 £
Cash on hand	866	1,253
Cash at bank	131,246	194,907
	132,112	196,160

Reach Community Projects (CIO)

Notes to the Financial Statements for the Year Ended 30 September 2024 (continued)

11 Creditors: amounts falling due within one year

	2024 £	2023 £
Trade creditors	8,332	5,465
Other taxation and social security	9,298	7,665
Other creditors	4,178	2,302
Accruals	600	600
	22,408	16,032

12 Creditors: amounts falling due after one year

	2024 £	2023 £
Deferred income	-	40,948

Deferred income refers to grant income received in the year that has been carried forward to the following year.

13 Funds

	Balance at 1 October 2023 £	Incoming resources £	Resources expended £	Balance at 30 September 2024 £
Unrestricted funds				
General	111,303	233,977	(343,728)	1,552
Restricted funds	40,092	395,672	(314,672)	121,092
Total funds	151,395	629,649	(658,400)	122,644

Reach Community Projects (CIO)

Notes to the Financial Statements for the Year Ended 30 September 2024 (continued)

	Balance at 1 October 2023 £	Incoming resources £	Resources expended £	Balance at 30 September 2024 £
Unrestricted				
<i>General</i>				
Community	1,961	-	-	1,961
Reach	109,342	233,977	(343,728)	(409)
	<u>111,303</u>	<u>233,977</u>	<u>(343,728)</u>	<u>1,552</u>
Restricted				
Foodbank	-	52,462	(52,138)	324
Reach into the Community	30,843	330,485	(245,237)	116,091
Client Aid	9,249	12,725	(17,297)	4,677
	<u>40,092</u>	<u>395,672</u>	<u>(314,672)</u>	<u>121,092</u>
Total funds	<u><u>151,395</u></u>	<u><u>629,649</u></u>	<u><u>(658,400)</u></u>	<u><u>122,644</u></u>

	Balance at 1 October 2022 £	Incoming resources £	Resources expended £	Transfers £	Balance at 30 September 2023 £
Unrestricted funds					
General	13,600	411,283	(250,442)	(63,138)	111,303
Restricted funds	<u>72,748</u>	<u>215,724</u>	<u>(311,518)</u>	<u>63,138</u>	<u>40,092</u>
Total funds	<u><u>86,348</u></u>	<u><u>627,007</u></u>	<u><u>(561,960)</u></u>	<u><u>-</u></u>	<u><u>151,395</u></u>

REACH COMMUNITY PROJECTS

England & Wales - Charity number 1169108

Accounts

Charity registration number: 1169108



Reach Community Projects (CIO)

Annual Report and Financial Statements

for the Year Ended 30 September 2023

Reach Community Projects (CIO)

Contents (continued)

Reference and Administrative Details	1
Trustees' Report	2 to 10
Independent Examiner's Report	11
Statement of Financial Activities	12
Balance Sheet	13
Notes to the Financial Statements	14 to 24

Reach Community Projects (CIO)

Reference and Administrative Details

Trustees	Roy Graham Gavin Rowden Claire Darracott Kirsten Newble Leigh Carter
Senior Management / Leadership Team	Henry Wilson MBE Annetta Record Justine Cammiss-Strudwick
Charity Registration Number	1169108
Independent Examiner	Burdett King Accountancy Limited 8 The Hamiltons Newmarket Suffolk CB8 0NF

Reach Community Projects (CIO)

Trustees' Report

REACH Community Projects (CIO)

Trustees' Report

The trustees present the annual report together with the financial statements of the charity for the year ended 30 September 2023.

Trustees

Roy Graham

Alison Chorley

Gavin Rowden

David Howell

Claire Darracott

Flourishing, Thriving, Communities

Haverhill is an area of great need, characterised by high levels of social deprivation, debt and low income.

At REACH we believe that everyone deserves to live their life to the full. However, financial crisis and hardship related issues have a devastating effect on individual and family life. Debt, low income, and homelessness can lead to mental health problems, relationship breakdown, low aspiration, marginalisation, poor health and low self-esteem.

REACH is an independent charity that believes in a relational handholding approach to helping families and individuals who are suffering from or struggling with the effects of financial crisis or hardship. This includes debt advice, benefit help, housing, emergency food and utility assistance and more.

We have a vision to see **flourishing, thriving** and resilient **communities** where lives are transformed, and short-term solutions to financial hardship are no longer needed.

Our mission is to relieve and prevent financial hardship whilst tackling the causes and advocating for change.

We are a Haverhill based charity **proactively tackling poverty** and responding to financial hardship.

Our priorities are:

- Lifting people out of hardship and financial crisis
- Preventing people from falling into hardship and financial crisis
- Advocating for change through influencing and local campaigning

Our four areas of work are:

- **Prevention:** Proactively preventing future financial hardship through education and strengthening bespoke support systems (e.g., community connector role)
- **Policy:** Advocating for change through influencing, and collectively developing policy to tackle issues that are facing our local community
- **Longer-term support:** Alleviating financial hardship through income maximisation and debt advice
- **Emergency aid:** Providing immediate short-term support to alleviate financial crisis

Our approach is to:

- Create **circles of support** to promote **flourishing families** and individuals
- Tackling the **root causes** and drivers of financial hardship
- **Campaigning and influencing for change** incorporating the voice of our community, especially the voice of lived experience
- **Supporting** other neighbouring areas

Our focus is on **relational hand-holding support** – it is through relationships that confidence and resilience is built and there is a better chance of getting out of financial hardship.

Through getting money into client's pockets, education, money management and influencing for a fairer statutory support system, **fewer people would need short-term support.**

Reach Community Projects (CIO)

Trustees' Report (continued)

[Our purpose is to journey with people, however long it takes, providing practical help, advice, and support.]

Alongside our practical handholding support, we also use our experience, data, and research to feed into the bigger picture both locally and nationally to challenge some of the unfair structures that keep people trapped in poverty.

We recognise that we cannot do it all by ourselves, and therefore rely on support and funding from our partners to deliver on this vision and mission. Partnerships include The Trussell Trust, Community Money Advice, Suffolk Mind, The Salvation Army, Haverhill and District Churches Together, Haverhill Town Council, West Suffolk Council and Suffolk County Council, Healthwatch Suffolk, Turning Point (substance abuse) GamCare, ONE Haverhill Partnership.

The majority of our core work is centred around Haverhill (and the surrounding villages) where we have our head office and foodbank warehouse. However, we have answered the call to work in partnership with partners in nearby towns such as Newmarket (The Racing Centre) and Halstead (Braintree Foodbank) to deliver our life changing debt advice and income maximisation (benefits).

Our key values are:

- **Relationships** –We value a relational approach that builds trust and makes all the difference. It empowers a person to start believing in themselves and achieve their desired outcome.
- **Generosity** –We always believe in being generous first and foremost.
- **Responsibility** –Alongside generosity there has to be responsibility. We believe in being responsible with the resources entrusted to us. As much as we walk with a person, we recognise that we cannot do it all and people must be helped to take responsibility for their lives.
- **A ‘can-do’ attitude** –We will work tirelessly to resolve the person’s situation but, if we can’t do it, we generally know someone who can.
- **Honesty** –Just as we need the people that we are helping to be honest with us, we too need to be honest about what we can realistically do to help them.

Structure, governance and management

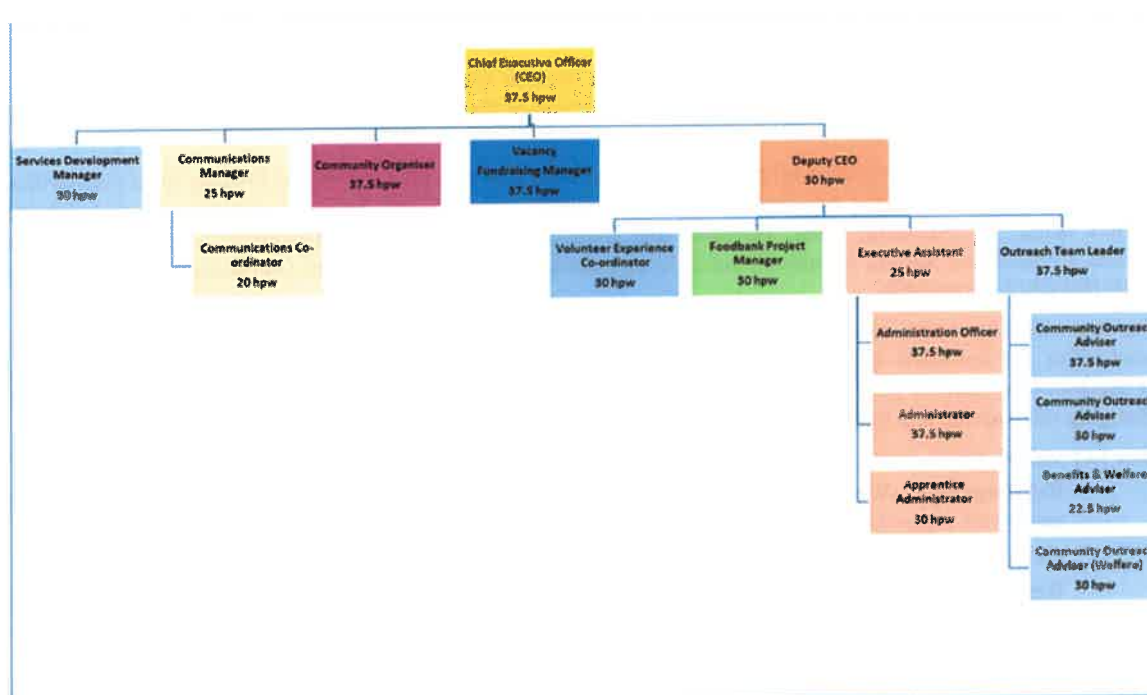
Nature of governing document

As a Charitable Incorporated Organisation (CIO) we have a Board of Trustees which meets on a regular basis. The board oversees and reviews the running of the charity including carefully monitoring our funding and our impact on the local community. New trustees are appointed based on the skills that they will bring to the trustee group.

Staffing: We have 17 members of staff and just one vacancy, a Fundraising Manager. In the last year we reorganised the executive team. the Operations Director became the Deputy CEO and the Services Director stood down from this role to take on Services Development Manager role.

Reach Community Projects (CIO)

Trustees' Report (continued)



We said goodbye to 5 members of staff, including our Communications Coordinator who moved to Scotland, our temporary Warehouse Team Leader, our Outreach Team Leader who relocated to the Channel Islands, our Projects Administrator who successfully completed her Level 3 Business Administration course (with a distinction, an extension of her apprenticeship with us) moved to mid-Suffolk, and the E-Commerce Co-ordinator resigned due to poor health.

In turn, we welcomed 6 new members of the team. A Welfare Advisor in October, a permanent Warehouse Manager in January, an Administration Officer in February (to back fill the vacancy created when the current role holder moved to Communications Team Leader). We also appointed a Communications Coordinator in February, an Outreach Team Leader in April and an Administrator who supports the debt team in June.

We also took the decision to take on a full-time Fundraising Manager and started to advertise this towards the end of the financial year, which also meant that we began the process of ending our relationship with our external consultant.

Volunteering:

Our volunteering numbers continue to buck the trend regionally and nationally. We now have over 90 active volunteers. The upward trend of new volunteers has now slowed; however, we do have new projects coming on stream over the next 12 months that will need volunteers to ensure they are run effectively.

Operations:

This last year has seen us work on our plans to become more accessible across the town and move away from a single point of operations. We ceased using our Resource Centre from August 2023 in favour of 'Collection Centres'.

Throughout the year we continued to grow these across the town. As of the end of September, we are operating from the Chalkstone Community Centre on a Monday and Wednesday, the Clements Community Centre on a Tuesday, Next Door Coffee Shop on a Thursday and St Mary's Church on a Friday. These are mostly staffed by volunteers, but we do have a member of the outreach team available to deal with any complex cases that do just drop in.

Reach Community Projects (CIO)

Trustees' Report (continued)

With regards to meeting clients for more in-depth meetings such as debt and benefit work, if these are not carried out in clients' homes, we have built on our relationship with the Salvation Army and are making use of their High Street presence, 'The Link' along with the meeting rooms at Chalkstone Community Centre.

Our eBay Shop:

The eBay shop had not been performing as well as it did throughout the first 2 years of operation (2019-2021). It was barely breaking even by the y/e 2022, despite looking at other ways to drive up sales. With the long-term sickness and sub-sequent resignation of our eBay coordinator, we took the opportunity to review the operation, e.g., could it be run effectively by volunteers? This coupled with the fact that we were running out of space in the office to house an ever-growing team of volunteers and staff. We therefore decided to close this operation and make use of the 'eBay room' in May 2023.

Public benefit:

The trustees confirm that they have complied with the requirements of section 17 of the Charities Act 2011 to have due regard to the public benefit guidance published by the Charity Commission for England and Wales.

Achievements and performance

A Note from the Chief Executive Officer:

As you can imagine, it has been an incredibly challenging year with increased need for our services during the worst 'cost-of-living' crisis in nearly 40 years. However, I am pleased to report that we have been able to press on with some of our plans as outlined below.

What we've done - Along with assisting 2959 **people facing poverty in Haverhill and the surrounding area throughout the last year**, our highest number ever; we have taken an opportunity offered to us by Suffolk County Council to pilot a 3-month schools budgeting project. Our Volunteer Coordinator launched a young people's volunteering programme. We partnered with Haverhill Town Council to pilot a cooking and budgeting course. Our Community Organiser created, with several other partners, a Mental Health Action Group to campaign for better mental health services in Haverhill.

In addition, we have increased our front-line hours from 150 hours p/w to 172.5. This has enabled us to tackle a huge increase in our workload, for example, seeing 75% more families struggling with complex debt, nearly ¾ of these had rent or mortgage arrears. We also continued to work on our data collection, impact measurement, sustainability as well as seeking greater strategic focus. This has led to categorising our projects under the following 3 headings:

- Emergency aid (emergency food, utilities, client aid etc.)
- Longer term support (debt and welfare work)
- Prevention (schools, cooking, and campaigning)

Highlights include:

- A whopping £639,577 of financial gain was achieved for 107 families (see the 'numbers' section below)
- 153 families were helped with debt, up from 88 for last year
- 692 young people have been taught budgeting since February
- 60 young people have engaged over the year to deliver 266 volunteering hours

At the end of September 2022; we said that we would do the following:

- **Strengthen and develop an income maximisation team** – we now have a team of volunteers who are triaging Monday to Friday. The Income Maximisation part continues to be developed, we are not where we would have hoped to have been, but we are expecting this to be fully operational by March 2024.
- **Develop an effective evaluation process to gauge client's emotional well-being** – this is currently happening and was launched in May. There are tweaks required to the data gathering and is ongoing.

Reach Community Projects (CIO)

Trustees' Report (continued)

- **Recruit specialist volunteers to carry out more in-depth data analysis and research** – this never really progressed despite pursuing opportunities. On a positive note, we have been given some additional funding to turn this into a paid position and is in our plans for 2024.
- **Set up agreements with potential trusted partners to include data sharing** – this is happening, we have set agreements with a few partners, but naturally, this is ongoing.
- **Develop a debt and welfare project in Uttlesford** – we began taking on new clients early September (once the data sharing agreement was in place.)
- **Expand our mobile hub service** – although village hubs have not been utilised, and we don't have any further plans in pushing this forward, we are now fully operational in community hubs 5 days a week.
- **Deliver money management courses into 2 schools** – we have been to 15 different schools to deliver budgeting lessons with more planned. As of the end of September 692 young people had received budgeting lessons from Tracey, our outreach advisor / educator. As of September, Tracey has taken on the role of 'Educator' for 15 hours p/w delivering budgeting to all schools in our geographical area.
- **Continue to work with partners on identifying gaps in service provision** – Following our community engagement events i.e., regular market stalls, High Street stalls, surveys etc., several gaps were identified that contribute towards families falling into financial crisis and hardship. These included life skills such as cooking and budgeting and poor mental health provision in the town. Therefore, with the aim of hardship prevention, we have undertaken the following:
 - **'Cooking on a Budget':** We partnered with Haverhill Town Council and the Haverhill Community Kitchen to pilot cooking and budgeting sessions for 10 young adults with varying vulnerabilities who struggle with life skills in general. Along with the cookery skills, we provided the budgeting sessions. This has led to a 4-week 'cooking on a budget' pilot that took place in August for 9 of our clients. This pilot was delivered in partnership with professional chef from Ashdon Catering. There are more planned, this includes 'Christmas dinner tips on a budget' and a set of videos on how to cook on a budget.
 - **Poor Mental Health Provision:** Again, to help prevent families falling further into hardship, the Mental Health Action Group was established in February. The MHAG is a partnership with several other organisations and led by our Community Organiser. Following months of research, a report was produced and widely circulated. Actions from the report now has the support of the 2 local GP surgeries in town. This is an ongoing project.
 - **Drug and alcohol support:** We continue to work with colleagues from the ONE Haverhill Partnership to improve service provision for families suffering hardship because of substance abuse. Following investment from West Suffolk Council we carried out an action research project to establish what could be done to improve the take up of recovery options provided by the statutory service. Several priorities have been identified and we are working with partners to improve service provision in Haverhill. This is an ongoing project.

Overall Numbers:

- 1528 families were helped with 1807 issues. This includes 943 issues regarding emergency food requests. There were 2959 beneficiaries of which 1167 were children (up by 12% on last year)
- 153 families were helped with debt, a total of 319 beneficiaries (197 adults and 122 children)
- £639,577 of financial gains for 107 of our families! This includes 21 families that have been set free from the misery of debt and a further 23 on their way. 42 families received benefits, and 25 families helped in other ways.
- Total number of people helped with welfare, (benefit, housing, client aid etc.) are 840 (552 adults and 288 children)
- Sadly, our foodbank project numbers remain stubbornly high with a new record number of people fed for the year – 2037, with little sign yet that the situation is likely to improve any time soon. It is a very small increase on last years' figure of 2005 people fed, but it's the increase in the number of children that is the most concerning. More families are being sucked into financial crisis and hardship. In total, 947 food boxes were given out, 1224 adults and 813 children were fed.

Reach Community Projects (CIO)

Trustees' Report (continued)

Newmarket Project:

Word is definitely out in Newmarket which has meant that our work has exploded! The numbers of families helped has grown by just over 150% - up from 69 to 175. There have been a few challenges with the Newmarket project: i) finding a permanent office space following the closure of the previous office and ii) securing the additional funding needed to ensure the project remains sustainable in the longer term.

- 175 families helped with 219 issues (83 for last year). This includes 37 issues of debt, 36 with benefits and 82 with client aid. There were 394 beneficiaries, including 186 children

We continue partnership working with a satellite project in Sudbury (www.number72.net) they carry out all their face-to-face debt work whereas we supply the back-office work and general welfare and benefits advice. We have also just begun, at the beginning of September, to take on new families in Saffron Walden and Halstead in North Essex.

Relationships with Partner Organisations:

We have seen a strengthening of partnership working, this includes a new project with Suffolk Mind, the Mental Health Action Group, there are several partners in Haverhill. We continue to work with many other partners including Haverhill Town Council, West Suffolk and Suffolk County Councils. All our hubs are run in partnership with local churches.

The challenges and how we've overcome:

Mental health: The biggest challenge that we are facing is mental health. Time and again, when one of our outreach team sees a client for the first time, the advisor must unwrap layers of historic emotional turmoil before we can get to the issue that we are trained to deal with - relieving financial crisis and hardship. This is borne out in our research carried out between February and April this year (2023) where we surveyed individuals who called us seeking support. Of the 43 clients who consented to taking part in the survey, 38 individuals, 88.4%, said they had suffered with poor mental health within the last three to six months. The complexity of the cases has also had a detrimental effect on frontline staff. Just recently, a triage volunteer had to deal with 2 suicide threats one after the other. (The emergency services were called; our triage volunteer was taken off frontline duties and support offered.)

As well as working with statutory services to try and address the lack of services, we have trained our front-line team in Mental Health First Aid provided by Suffolk Mind. We also have engaged the services of a local counsellor for staff. It remains a challenge and one that we are monitoring closely.

We are also planning to introduce a new role – a 'Community Connector' that will sit between our client services team and external services. The idea is to lift the burden away from our outreach advisors and 'connect' them to an appropriate agency or volunteer. We plan to have this role in place by January 2024.

Our finances:

Our provisional figures for the y/e 30th September; income - £572,000 (up from £462,00 last year). This was higher than anticipated due to the investment from the Trussell Trust into our Community Connector role just before the end of our financial year. Expenditure was around £556,000. Although our income from individuals has increased by over 10%, up from £120,000 to £135,000, the share of overall income percentage has decreased to 24%.

Our budget:

We have an approximate budget for the forthcoming year of approximately £650,000.

Reach Community Projects (CIO)

Trustees' Report (continued)

An example of how the project is changing lives:

Jason's Story

Jason came to REACH in a time of personal crisis and was given the opportunity to turn his own life around by taking responsibility and making a change. Now he has a community to turn to, but he wouldn't have been able to take that first step without your help to get him through the lowest part of his life. In turn, he is able to give support to others through volunteering.

Jason says: *"Volunteering for REACH has completely changed my life. I had never heard of REACH until I was at my lowest, and in need of a food parcel myself.*

"I had an accident where I worked as a welder/fabricator. I had to have six weeks off work, but as an alcoholic it was an awful experience. I was left alone and very lonely with my thoughts, and I would just drink to fill the days.

"When I returned to work and abruptly stopped drinking, it led to seizures, and I became stuck in a loop. If I drank, I'd get caught up with the wrong people and become completely reliant on alcohol. If I stopped drinking completely, I'd end up in hospital with seizures followed by recovery time at home alone and end up drinking.

"After I had been to rehab, I was still off work following my most recent seizure. That meant I was struggling to cover my bills; I couldn't afford heating and was living on instant rice packets. When REACH gave me a food parcel, it was like receiving a lifeline, and I simply couldn't believe they were giving me more food than I'd seen in months. They even helped me to apply for some benefits to bridge the gap until I can return to work, and in winter an energy top up voucher so I didn't freeze in the nights.

"I knew I had to find another way to spend my days if I wanted to turn my life around, so I asked if I could volunteer in the REACH warehouse. It's brilliant. The people are nice, and it feels great to be doing something useful. Here, I can build relationships that aren't based on alcohol. I've made friends with all sorts of people; I even met my partner while volunteering for REACH, and we're very good for each other. I'm in such a good place now. So, REACH has had a massive impact on me, and I feel like I need REACH more than they need me, really!"

Special Thanks:

We are indebted to all those who have assisted us in our mission to lift families out of financial crisis and hardship. Thank you to our many volunteers who give their time on a regular basis. Thank you too to our partners, these include Trussell Trust, West Suffolk Council, South Cambridgeshire District Council, Suffolk Community Foundation and Haverhill Town Council. The River of Life Community Church, Haverhill Methodist Church, St Mary's Church, Haverhill, The Salvation Army, Cambridgeshire Community Foundation, Mrs LD Rope, Suffolk County Council, Garfield Weston, Essex Community Foundation, The Racing Centre (Newmarket), and of course, those that wish to remain anonymous. There are many more individual donors, businesses, community groups, churches and schools who have all contributed to make 2022-23 a much easier task than we could ever have imagined! Thank you.

Henry Wilson MBE
Chief Executive Officer

Reach Community Projects (CIO)

Trustees' Report (continued)

Plans for future periods:

If the predictions are correct from the foodbank network - the Trussell Trust (www.trusselltrust.org), we are anticipating a torrid winter of increased food requests and possible shortages in donations. Debt enquiries are continuing to rise too, and we are currently recruiting to increase our frontline debt and welfare (D&W) staffing capacity. That said, we are pressing on with the roll-out of schools' work and the cooking on a budget with our clients.

The next 12 months key objectives include the following (alongside meeting increased D&W, and food needs):

- Develop partnerships with agencies such as Suffolk Mind, the Steam Café, to bring mental health services into Haverhill at least 1 day per week by October 2024 – releasing the burden on our frontline team
- Increase our schools budgeting work across our geographical area to 30 schools by October 2024
- Expand our frontline capacity from 172.5 hours p/w to at least 187.5 hours p/w by Spring 2024
- Consolidate D&W in Uttlesford and explore launching/bolstering D&W in Sudbury by the end of 2024
- Recruit a data impact officer by Spring 2024 to work alongside our Fundraising/Comms team to better measure our impact
- Recruit a 'Community Connector' by Spring 2024
- Launch an advisory panel made up of those with lived experience by May 2024

Financial review

Policy on reserves

Reserves are that part of a charity's unrestricted funds that is freely available to spend on any of the charity's purposes. REACH maintains free unrestricted reserves:

- To provide a level of working capital that protects the continuity of its core work
- To provide a level of funding for unexpected opportunities
- To provide cover for risks such as unforeseen expenditure or unanticipated loss of income.


We endeavour to maintain 3 months of staffing and running costs.

The board of trustees will review the above criteria with reference to REACH's strategy and Annual Plan and determine the target level of free reserves to meet these.

The board of trustees will at times designate funds from free reserves for significant project costs or replacement of major assets.

The accounts set out on the following pages reflect the activities of the charity.

The annual report was approved by the trustees of the charity on 24 July 2024 and signed on its behalf by:



.....
Roy Graham
Chairman and trustee

Reach Community Projects (CIO)

Trustees' Report (continued)

Statement of Trustees' Responsibilities

The trustees are responsible for preparing the trustees' report and the financial statements in accordance with the United Kingdom Accounting Standards (United Kingdom Generally Accepted Accounting Practice) and applicable law and regulations.

The law applicable to charities requires the trustees to prepare financial statements for each financial year which give a true and fair view of the state of affairs of the charity and of the incoming resources and application of resources of the charity for that period. In preparing these financial statements, the trustees are required to:

- select suitable accounting policies and then apply them consistently;
- observe the methods and principles in the Charities SORP;
- make judgements and estimates that are reasonable and prudent;
- state whether applicable accounting standards have been followed, subject to any material departures disclosed and explained in the financial statements; and
- prepare the financial statements on the going concern basis unless it is inappropriate to presume that the charity will continue in business.

The trustees are responsible for keeping proper accounting records that disclose with reasonable accuracy at any time the financial position of the charity and enable them to ensure that the financial statements comply with the Charities Act 2011, the Charities (Accounts and Reports) Regulations 2008, and the provisions of the constitution. The trustees are also responsible for safeguarding the assets of the charity and hence for taking reasonable steps for the prevention and detection of fraud and other irregularities.

Reach Community Projects (CIO)

Independent Examiner's Report to the trustees of Reach Community Projects (CIO)

I report to the trustees on my examination of the accounts of Reach Community Projects (CIO) for the year ended 30 September 2023.

Responsibilities and basis of report

As the charity trustees of Reach Community Projects (CIO) you are responsible for the preparation of the accounts in accordance with the requirements of the Charities Act 2011 ('the Act').

I report in respect of my examination of the Reach Community Projects (CIO)'s accounts carried out under section 145 of the 2011 Act and in carrying out my examination I have followed all the applicable Directions given by the Charity Commission under section 145(5)(b) of the Act.

Independent examiner's statement

Since Reach Community Projects (CIO)'s gross income exceeded £250,000 your examiner must be a member of a body listed in section 145 of the 2011 Act. I confirm that I am qualified to undertake the examination because I am a member of Chartered Certified Accountant, which is one of the listed bodies.

I have completed my examination. I confirm that no material matters have come to my attention in connection with the examination giving me cause to believe that in any material respect:

1. accounting records were not kept in respect of Reach Community Projects (CIO) as required by section 130 of the Act; or
2. the accounts do not accord with those records; or
3. the accounts do not comply with the accounting requirements concerning the form and content of accounts set out in the Charities (Accounts and Reports) Regulations 2008 other than any requirement that the accounts give a 'true and fair view' which is not a matter considered as part of an independent examination.

I have no concerns and have come across no other matters in connection with the examination to which attention should be drawn in this report in order to enable a proper understanding of the accounts to be reached.



.....
Lisa King
Chartered Certified Accountant

8 The Hamiltons
Newmarket
Suffolk
CB8 0NF

24 July 2024

Reach Community Projects (CIO)

Statement of Financial Activities for the Year Ended 30 September 2023

	Note	Unrestricted funds £	Restricted funds £	Total 2023 £
Income and Endowments from:				
Donations and legacies	2	409,083	215,712	624,795
Investment income	3	-	12	12
Other income		2,200	-	2,200
Total income		<u>411,283</u>	<u>215,724</u>	<u>627,007</u>
Expenditure on:				
Raising funds		(357)	(30,166)	(30,523)
Charitable activities		(68,453)	(193,754)	(262,207)
Other expenditure		(181,632)	(87,598)	(269,230)
Total expenditure		<u>(250,442)</u>	<u>(311,518)</u>	<u>(561,960)</u>
Net income/(expenditure)		160,841	(95,794)	65,047
Gross transfers between funds		(63,138)	63,138	-
Net movement in funds		97,703	(32,656)	65,047
Reconciliation of funds				
Total funds brought forward		13,600	72,748	86,348
Total funds carried forward	14	<u>111,303</u>	<u>40,092</u>	<u>151,395</u>
	Note	Unrestricted funds £	Restricted funds £	Total 2022 £
Income and Endowments from:				
Donations and legacies		162,648	219,050	381,698
Investment income	3	-	1	1
Other income		-	90	90
Total income		<u>162,648</u>	<u>219,141</u>	<u>381,789</u>
Expenditure on:				
Raising funds		(791)	(32,022)	(32,813)
Charitable activities		(62,747)	(65,731)	(128,478)
Other expenditure		(127,762)	(184,685)	(312,447)
Total expenditure		<u>(191,300)</u>	<u>(282,438)</u>	<u>(473,738)</u>
Net expenditure		(28,652)	(63,297)	(91,949)
Gross transfers between funds		(33,967)	33,967	-
Net movement in funds		(62,619)	(29,330)	(91,949)
Reconciliation of funds				
Total funds brought forward		76,220	102,077	178,297
Total funds carried forward	14	<u>13,601</u>	<u>72,747</u>	<u>86,348</u>

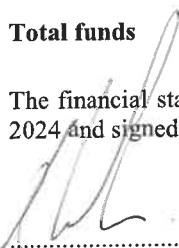
All of the charity's activities derive from continuing operations during the above two periods.

The notes on pages 14 to 24 form an integral part of these financial statements.
Page 12

Reach Community Projects (CIO)
(Registration number: 1169108)
Balance Sheet as at 30 September 2023

	Note	2023 £	2022 £
Fixed assets			
Tangible assets	9	12,215	3,063
Current assets			
Debtors	10	-	5,107
Cash at bank and in hand	11	<u>196,160</u>	<u>173,699</u>
		196,160	178,806
Creditors: Amounts falling due within one year	12	<u>(16,032)</u>	<u>(10,262)</u>
Net current assets		<u>180,128</u>	<u>168,544</u>
Total assets less current liabilities		192,343	171,607
Creditors: Amounts falling due after more than one year	13	<u>(40,948)</u>	<u>(85,259)</u>
Net assets		<u><u>151,395</u></u>	<u><u>86,348</u></u>
Funds of the charity:			
Restricted income funds			
Restricted funds		40,092	72,747
Unrestricted income funds			
Unrestricted funds		<u>111,303</u>	<u>13,601</u>
Total funds	14	<u><u>151,395</u></u>	<u><u>86,348</u></u>

The financial statements on pages 12 to 24 were approved by the trustees, and authorised for issue on 24 July 2024 and signed on their behalf by:



 Roy Graham
 Chairman and trustee

Reach Community Projects (CIO)

Notes to the Financial Statements for the Year Ended 30 September 2023

1 Accounting policies

Statement of compliance

The financial statements have been prepared in accordance with the second edition of the Charities Statement of Recommended Practice issued in October 2019, the Financial Reporting Standard applicable in the United Kingdom and Republic of Ireland (FRS 102) and the Charities Act 2011.

Basis of preparation

Reach Community Projects (CIO) meets the definition of a public benefit entity under FRS 102. The accounts (financial statements) have been prepared under the historical cost convention with items recognised at cost or transaction value unless otherwise stated in the relevant note(s) to these accounts.

Going concern

The trustees consider that there are no material uncertainties about the charity's ability to continue as a going concern.

Income and endowments

Voluntary income including donations, gifts, legacies and grants that provide core funding or are of a general nature are recognised when the charity has entitlement to the income, it is probable that the income will be received and the amount can be measured with sufficient reliability.

Donations and legacies

Donations and legacies are recognised on a receivable basis when receipt is probable and the amount can be reliably measured.

Grants receivable

Grants are recognised when the charity has an entitlement to the funds and any conditions linked to the grants have been met. Where performance conditions are attached to the grant and are yet to be met, the income is recognised as a liability and included on the balance sheet as deferred income to be released.

Investment income

Dividends are recognised once the dividend has been declared and notification has been received of the dividend due.

Expenditure

All expenditure is recognised once there is a legal or constructive obligation to that expenditure, it is probable settlement is required and the amount can be measured reliably. All costs are allocated to the applicable expenditure heading that aggregate similar costs to that category. Where costs cannot be directly attributed to particular headings they have been allocated on a basis consistent with the use of resources, with central staff costs allocated on the basis of time spent, and depreciation charges allocated on the portion of the asset's use. Other support costs are allocated based on the spread of staff costs.

Raising funds

These are costs incurred in attracting voluntary income, the management of investments and those incurred in trading activities that raise funds.

Reach Community Projects (CIO)

Notes to the Financial Statements for the Year Ended 30 September 2023 (continued)

Charitable activities

Charitable expenditure comprises those costs incurred by the charity in the delivery of its activities and services for its beneficiaries. It includes both costs that can be allocated directly to such activities and those costs of an indirect nature necessary to support them.

Support costs

Support costs include central functions and have been allocated to activity cost categories on a basis consistent with the use of resources, for example, allocating property costs by floor areas, or per capita, staff costs by the time spent and other costs by their usage.

Governance costs

These include the costs attributable to the charity's compliance with constitutional and statutory requirements, including audit, strategic management and trustees meetings and reimbursed expenses.

Taxation

The charity is considered to pass the tests set out in Paragraph 1 Schedule 6 of the Finance Act 2010 and therefore it meets the definition of a charitable company for UK corporation tax purposes. Accordingly, the charity is potentially exempt from taxation in respect of income or capital gains received within categories covered by Chapter 3 Part 11 of the Corporation Tax Act 2010 or Section 256 of the Taxation of Chargeable Gains Act 1992, to the extent that such income or gains are applied exclusively to charitable purposes.

Tangible fixed assets

Individual fixed assets costing £100.00 or more are initially recorded at cost, less any subsequent accumulated depreciation and subsequent accumulated impairment losses.

Depreciation and amortisation

Depreciation is provided on tangible fixed assets so as to write off the cost or valuation, less any estimated residual value, over their expected useful economic life.

Trade debtors

Trade debtors are amounts due from customers for merchandise sold or services performed in the ordinary course of business.

Trade debtors are recognised initially at the transaction price. They are subsequently measured at amortised cost using the effective interest method, less provision for impairment. A provision for the impairment of trade debtors is established when there is objective evidence that the charity will not be able to collect all amounts due according to the original terms of the receivables.

Cash and cash equivalents

Cash and cash equivalents comprise cash on hand and call deposits, and other short-term highly liquid investments that are readily convertible to a known amount of cash and are subject to an insignificant risk of change in value.

Trade creditors

Trade creditors are obligations to pay for goods or services that have been acquired in the ordinary course of business from suppliers. Accounts payable are classified as current liabilities if they do not have an unconditional right, at the end of the reporting period, to defer settlement of the creditor for at least twelve months after the reporting date. If there is an unconditional right to defer settlement for at least twelve months after the reporting date, they are presented as non-current liabilities.

Reach Community Projects (CIO)

Notes to the Financial Statements for the Year Ended 30 September 2023 (continued)

Borrowings

Interest-bearing borrowings are initially recorded at fair value, net of transaction costs. Interest-bearing borrowings are subsequently carried at amortised cost, with the difference between the proceeds, net of transaction costs, and the amount due on redemption being recognised as a charge to the Statement of Financial Activities over the period of the relevant borrowing.

Interest expense is recognised on the basis of the effective interest method and is included in interest payable and similar charges.

Borrowings are classified as current liabilities unless the charity has an unconditional right to defer settlement of the liability for at least twelve months after the reporting date.

Fund structure

Unrestricted income funds are general funds that are available for use at the trustees discretion in furtherance of the objectives of the charity.

Restricted income funds are those donated for use in a particular area or for specific purposes, the use of which is restricted to that area or purpose.

Pensions and other post retirement obligations

The charity operates a defined contribution pension scheme which is a pension plan under which fixed contributions are paid into a pension fund and the charity has no legal or constructive obligation to pay further contributions even if the fund does not hold sufficient assets to pay all employees the benefits relating to employee service in the current and prior periods.

Contributions to defined contribution plans are recognised in the Statement of Financial Activities when they are due. If contribution payments exceed the contribution due for service, the excess is recognised as a prepayment.

Financial instruments

Classification

Financial assets and financial liabilities are recognised when the charity becomes a party to the contractual provisions of the instrument.

Financial liabilities and equity instruments are classified according to the substance of the contractual arrangements entered into. An equity instrument is any contract that evidences a residual interest in the assets of the charity after deducting all of its liabilities.

Reach Community Projects (CIO)

Notes to the Financial Statements for the Year Ended 30 September 2023 (continued)

Recognition and measurement

All financial assets and liabilities are initially measured at transaction price (including transaction costs), except for those financial assets classified as at fair value through profit or loss, which are initially measured at fair value (which is normally the transaction price excluding transaction costs), unless the arrangement constitutes a financing transaction. If an arrangement constitutes a financing transaction, the financial asset or financial liability is measured at the present value of the future payments discounted at a market rate of interest for a similar debt instrument.

Financial assets and liabilities are only offset in the statement of financial position when, and only when there exists a legally enforceable right to set off the recognised amounts and the charity intends either to settle on a net basis, or to realise the asset and settle the liability simultaneously.

Financial assets are derecognised when and only when a) the contractual rights to the cash flows from the financial asset expire or are settled, b) the charity transfers to another party substantially all of the risks and rewards of ownership of the financial asset, or c) the charity, despite having retained some, but not all, significant risks and rewards of ownership, has transferred control of the asset to another party.

Financial liabilities are derecognised only when the obligation specified in the contract is discharged, cancelled or expires.

Reach Community Projects (CIO)

Notes to the Financial Statements for the Year Ended 30 September 2023 (continued)

Debt instruments

Debt instruments which meet the following conditions are subsequently measured at amortised cost using the effective interest method:

- (a) The contractual return to the holder is (i) a fixed amount; (ii) a positive fixed rate or a positive variable rate; or (iii) a combination of a positive or a negative fixed rate and a positive variable rate.
- (b) The contract may provide for repayments of the principal or the return to the holder (but not both) to be linked to a single relevant observable index of general price inflation of the currency in which the debt instrument is denominated, provided such links are not leveraged.
- (c) The contract may provide for a determinable variation of the return to the holder during the life of the instrument, provided that (i) the new rate satisfies condition (a) and the variation is not contingent on future events other than (1) a change of a contractual variable rate; (2) to protect the holder against credit deterioration of the issuer; (3) changes in levies applied by a central bank or arising from changes in relevant taxation or law; or (ii) the new rate is a market rate of interest and satisfies condition (a).
- (d) There is no contractual provision that could, by its terms, result in the holder losing the principal amount or any interest attributable to the current period or prior periods.
- (e) Contractual provisions that permit the issuer to prepay a debt instrument or permit the holder to put it back to the issuer before maturity are not contingent on future events, other than to protect the holder against the credit deterioration of the issuer or a change in control of the issuer, or to protect the holder or issuer against changes in levies applied by a central bank or arising from changes in relevant taxation or law.
- (f) Contractual provisions may permit the extension of the term of the debt instrument, provided that the return to the holder and any other contractual provisions applicable during the extended term satisfy the conditions of paragraphs (a) to (c).

Debt instruments that are classified as payable or receivable within one year on initial recognition and which meet the above conditions are measured at the undiscounted amount of the cash or other consideration expected to be paid or received, net of impairment.

With the exception of some hedging instruments, other debt instruments not meeting these conditions are measured at fair value through profit or loss.

Commitments to make and receive loans which meet the conditions mentioned above are measured at cost (which may be nil) less impairment.

Investments

Investments in non-convertible preference shares and non-puttable ordinary or preference shares (where shares are publicly traded or their fair value is reliably measurable) are measured at fair value through profit or loss. Where fair value cannot be measured reliably, investments are measured at cost less impairment.

Investments in subsidiaries and associates are measured at cost less impairment. For investments in subsidiaries acquired for consideration including the issue of shares qualifying for merger relief, cost is measured by reference to the nominal value of the shares issued plus fair value of other consideration. Any premium is ignored.

Reach Community Projects (CIO)

Notes to the Financial Statements for the Year Ended 30 September 2023 (continued)

Fair value measurement

The best evidence of fair value is a quoted price for an identical asset in an active market. When quoted prices are unavailable, the price of a recent transaction for an identical asset provides evidence of fair value as long as there has not been a significant change in economic circumstances or a significant lapse of time since the transaction took place. If the market is not active and recent transactions of an identical asset on their own are not a good estimate of fair value, the fair value is estimated by using a valuation technique.

2 Income from donations and legacies

	Unrestricted funds General £	Restricted funds £	Total 2023 £	Total 2022 £
Donations and legacies;				
Online donations	14,910	-	14,910	21,386
One off gifts	77,483	4,995	82,478	74,417
Gift aid reclaimed	9,914	-	9,914	1,003
Grants, including capital grants;				
Core funding grants	271,938	203,992	475,930	245,923
Regular giving and capital donations	34,838	6,725	41,563	38,969
	409,083	215,712	624,795	381,698

3 Investment income

	Restricted funds £	Total funds £
Interest receivable and similar income;		
Interest receivable on bank deposits	12	12
Total for 2023	12	12
Total for 2022	1	1

Reach Community Projects (CIO)

Notes to the Financial Statements for the Year Ended 30 September 2023 (continued)

4 Analysis of governance and support costs

Governance costs

	Unrestricted funds General £	Total funds £
Independent examiner fees		
Examination of the financial statements	600	600
Depreciation, amortisation and other similar costs	<u>2,478</u>	<u>2,478</u>
Total for 2023	<u>3,078</u>	<u>3,078</u>
Total for 2022	<u>600</u>	<u>600</u>

5 Trustees remuneration and expenses

No trustees, nor any persons connected with them, have received any remuneration from the charity during the year.

No trustees have received any reimbursed expenses from the charity during the year.

Reach Community Projects (CIO)

Notes to the Financial Statements for the Year Ended 30 September 2023 (continued)

6 Staff costs

The aggregate payroll costs were as follows:

	2023 £	2022 £
Staff costs during the year were:		
Wages and salaries	228,050	281,896
Social security costs	22,331	14,853
Pension costs	9,109	7,133
Other staff costs	9,740	8,565
	<u>269,230</u>	<u>312,447</u>

17 (2022 - 16) of the above employees participated in the Defined Contribution Pension Schemes.

Contributions to the employee pension schemes for the year totalled £9,109 (2022 - £7,133).

No employee received emoluments of more than £60,000 during the year

7 Independent examiner's remuneration

	2023 £	2022 £
Examination of the financial statements	<u>600</u>	<u>600</u>

Reach Community Projects (CIO)

Notes to the Financial Statements for the Year Ended 30 September 2023 (continued)

8 Taxation

The charity is a registered charity and is therefore exempt from taxation.

9 Tangible fixed assets

	Furniture and equipment £	Motor vehicles £	Total £
Cost			
At 1 October 2022	26,216	-	26,216
Additions	1,630	10,000	11,630
At 30 September 2023	27,846	10,000	37,846
Depreciation			
At 1 October 2022	23,153	-	23,153
Charge for the year	620	1,858	2,478
At 30 September 2023	23,773	1,858	25,631
Net book value			
At 30 September 2023	4,073	8,142	12,215
At 30 September 2022	3,063	-	3,063

10 Debtors

	2023 £		2022 £
Other debtors	-		5,107

11 Cash and cash equivalents

	2023 £		2022 £
Cash on hand	1,253		456
Cash at bank	194,907		173,243
	196,160		173,699

Reach Community Projects (CIO)

Notes to the Financial Statements for the Year Ended 30 September 2023 (continued)

12 Creditors: amounts falling due within one year

	2023 £	2022 £
Trade creditors	5,465	1,878
Other taxation and social security	7,665	5,455
Other creditors	2,302	1,729
Accruals	600	1,200
	16,032	10,262

13 Creditors: amounts falling due after one year

	2023 £	2022 £
Deferred income	40,948	85,259

Deferred income refers to grant income received in the year that has been carried forward to the following year.

14 Funds

	Balance at 1 October 2022 £	Incoming resources £	Resources expended £	Transfers £	Balance at 30 September 2023 £
Unrestricted funds					
General	13,600	411,283	(250,442)	(63,138)	111,303
Restricted funds	72,748	215,724	(311,518)	63,138	40,092
Total funds	86,348	627,007	(561,960)	-	151,395

Reach Community Projects (CIO)

Notes to the Financial Statements for the Year Ended 30 September 2023 (continued)

	Balance at 1 October 2022 £	Incoming resources £	Resources expended £	Transfers £	Balance at 30 September 2023 £
Unrestricted					
<i>General</i>					
Reach	5,198	407,407	(240,125)	(63,138)	109,342
Social Enterprise	8,402	3,876	(10,317)	-	1,961
	<u>13,600</u>	<u>411,283</u>	<u>(250,442)</u>	<u>(63,138)</u>	<u>111,303</u>
Restricted					
Foodbank	-	29,085	(92,223)	63,138	-
Reach into the Community	59,718	160,319	(189,194)	-	30,843
Client Aid	13,030	26,320	(30,101)	-	9,249
	<u>72,748</u>	<u>215,724</u>	<u>(311,518)</u>	<u>63,138</u>	<u>40,092</u>
Total funds	<u>86,348</u>	<u>627,007</u>	<u>(561,960)</u>	<u>-</u>	<u>151,395</u>
	Balance at 1 October 2021 £	Incoming resources £	Resources expended £	Transfers £	Balance at 30 September 2022 £
Unrestricted funds					
General	76,220	162,648	(191,300)	(33,967)	13,601
Restricted funds	<u>102,077</u>	<u>219,141</u>	<u>(282,438)</u>	<u>33,967</u>	<u>72,747</u>
Total funds	<u>178,297</u>	<u>381,789</u>	<u>(473,738)</u>	<u>-</u>	<u>86,348</u>

REACH COMMUNITY PROJECTS

England & Wales - Charity number 1169108

Accounts

Charity registration number: 1169108

Reach Community Projects (CIO)

Annual Report and Financial Statements

for the Year Ended 30 September 2022

Reach Community Projects (CIO)

Contents (continued)

Reference and Administrative Details	1
Trustees' Report	2 to 8
Independent Examiner's Report	9
Statement of Financial Activities	10
Balance Sheet	11
Notes to the Financial Statements	12 to 22

Reach Community Projects (CIO)

Reference and Administrative Details

Trustees	Roy Graham Alison Chorley Gavin Rowden David Howell Claire Darracott
Senior Management / Leadership Team	Henry Wilson MBE Annetta Record Justine Cammiss-Strudwick
Charity Registration Number	1169108
Independent Examiner	Burdett King Accountancy Limited 8 The Hamiltons Newmarket Suffolk CB8 0NF

Reach Community Projects (CIO)

Trustees' Report

REACH Community Projects (CIO)

Trustee's Report

The trustees present the annual report together with the financial statements of the charity for the year ended 30 September 2022.

Trustees

Roy Graham

Alison Chorley

Gavin Rowden

David Howell

Claire Darracott

Objectives

Haverhill is an area of great need, characterised by high levels of social deprivation, debt and low income. At REACH we believe that everyone deserves to live their lives to the full. However, poverty has a devastating effect on individual and family life. Debt, low income and homelessness can lead to mental health problems, relationship breakdown, low aspiration, marginalisation, poor health and low self-esteem.

REACH is an independent charity that believes in a relational handholding approach to helping families and individuals who are suffering from or struggling with the effects of financial crisis or hardship. This includes debt advice, benefit help, housing, emergency food and utility assistance and more.

We work with many partners to deliver life transforming financial support to local communities from our bases in Haverhill and Newmarket. Our partners include The Trussell Trust, Community Money Advice, Acts 435 and many more.

We long to see thriving families and individuals living their lives to the full. To this end, we journey with the people we are supporting, for however long it takes, to bring a solution to their current crisis and hardship.

Alongside our practical handholding support, we also use our experience, data and research to feed into the bigger picture both locally and nationally to challenge some of the unfair structures that keep people trapped in poverty

Our key values are:

- **Relationships** –We value a relational approach that builds trust and makes all the difference. It empowers a person to start believing in themselves and achieve their desired outcome.
- **Generosity** –We always believe in being generous first and foremost.
- **Responsibility** –Alongside generosity there has to be responsibility. We believe in being responsible with the resources entrusted to us. As much as we walk with a person, we recognise that we cannot do it all and people must be helped to take responsibility for their lives.
- **A 'can-do' attitude** –We will work tirelessly to resolve the person's situation but, if we can't do it, we generally know someone who can.
- **Honesty** –Just as we need the people that we are helping to be honest with us, we too need to be honest about what we can realistically do to help them.

Structure, governance and management

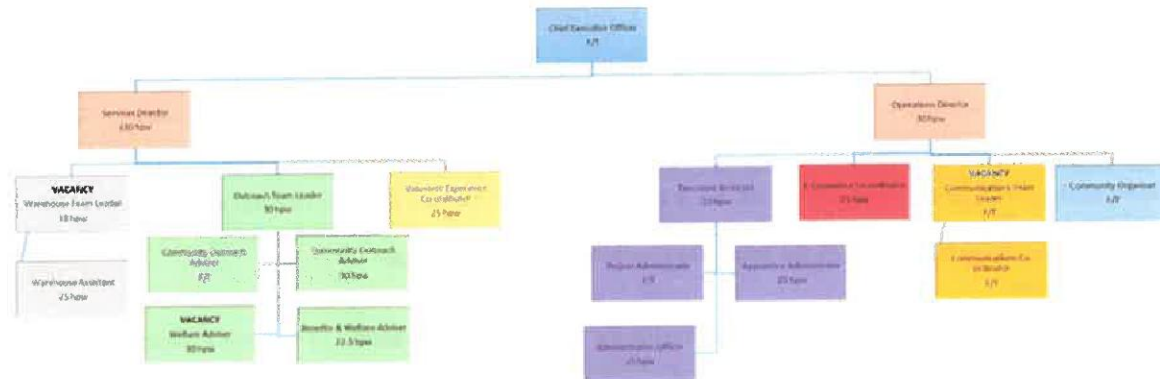
Nature of governing document

As a Charitable Incorporated Organisation (CIO) we have a Board of Trustees which meets on a regular basis. The board oversees and reviews the running of the charity including carefully monitoring our funding and our impact on the local community. New trustees are appointed based on the skills that they will bring to the trustee group.

Reach Community Projects (CIO)

Trustees' Report (continued)

Organisational structure



We have 16 members of staff and 3 vacancies. In the last year we have had a team reorganisation and have set up an executive team with the CEO, Services Director and Operations Director. This team is supported by the Executive Assistant (who also manages the Administration Team). To plug the gap left by the Admin Team Leader, we have taken on an additional Administration Officer.

In November 2021, one of our Outreach Advisors took on the expanding debt and benefits work in Newmarket. Therefore, we took on an additional advisor to bolster the team, especially with the deterioration of the economic situation.

In January, we also took on a Volunteer Experience Coordinator, and a Community Organiser. The latter is a 3-year project in partnership and fully funded by the Trussell Trust.

We also took advantage of the opportunity to take on 2 young people through the Government's KickStart Programme, 1 young person in the warehouse as a Warehouse Assistant and the other in the Admin Team. The latter has now joined as an Apprentice Administrator, whilst the other person continues in the warehouse.

Unfortunately, our Foodbank Manager resigned in January. We secured a temporary manager until August whilst they prepared to emigrate. We are currently recruiting for a new permanent manager.

At the end of September our regular volunteer numbers grew to 72. This increase from around 50 the previous year is much down to the investment of a dedicated person to work with and champion our incredible team of volunteers!

Our volunteers help with all aspects of the charity, from administration to the Foodbank, to Resource Centre Advisors (now known as 'Hub Volunteers'). We have seen an increase in young people volunteering with us for their Duke of Edinburgh Award and the return of companies, uniformed groups and schools carrying out work experience. We continue to work with a number of volunteers who require additional support, this includes partnerships with Horace Eve house (Mencap), and Broadlands Hall School.

Operations

Since the pandemic, we have adapted our approach to client facing work. The majority of our first contact now comes directly into the office, upwards of 80%. Therefore, we have set up a triage system that is staffed by volunteers and overseen by the outreach team.

Emergency aid requests such as food and client aid. Clients are simply interviewed over the phone before being directed to the Resource Centre or 'hubs' to collect their emergency aid. Anything more complex or needing further investigation will be followed up by a member of the Outreach Team either at the hub or a home visit.

Despite this new approach, we remain committed to getting to the root of the problem and ultimately, lift our clients out of hardship. We continue to case note all our client interactions and our visits.

Reach Community Projects (CIO)

Trustees' Report (continued)

Since the pandemic we also began to notice that the demographic of those coming to us for help was changing. Haverhill rapidly expanded since 2020 and the Resource Centre for some, began to be a barrier to accessing help. Therefore, we began to explore the purpose of the centre and whether it was still needed. We did this through consultation with clients, volunteers and stakeholders. We also began to pilot food collection hubs in other locations across the town.

As of the end of September, we are operating from the Chalkstone Community Centre on Monday and Wednesdays, Next Door Coffee Shop on a Thursday and the Resource Centre Tuesday and Fridays. These are mostly staffed by volunteers, but we do have a member of the outreach team available to deal with any complex cases that do just drop in. This is quite time consuming for our debt trained outreach advisors and prevents them from dealing with debt clients. Therefore, we are recruiting for a Welfare Advisor (emergency aid, benefit forms and anything that isn't debt) to be available at the hubs to release debt advisors to focus more on the debt work. We are anticipating handing back the Resource Centre in the following year.

Public benefit

The trustees confirm that they have complied with the requirements of section 17 of the Charities Act 2011 to have due regard to the public benefit guidance published by the Charity Commission for England and Wales.

Achievements and performance

A Note from the Chief Executive Officer

2021/2022 was a year when we began to recover from the pandemic. Restrictions were mostly lifted, despite the best efforts of anti-poverty charities, the so-called Universal Credit 'top-up' came to an end in early October. As predicted, foodbank charities saw a vast increase in need, and this included us.

We also began to prepare for what the experts were calling the 'Cost of Living Crisis'. Gas and electricity prices began to sky-rocket and our families were beginning to be very fearful.

However, it wasn't just the foodbank where we saw record numbers, as anticipated, we are sad to report that we have never supported so many families with financial hardship and crisis. In total we supported 2700 people (see more details below).

In summary - Along with dealing with an ever-increasing case load, we have been preparing for the long anticipated financial fallout in the wake of the pandemic. It has also been a year where we have expanded our team, expanded our geographical area, our services, including the introduction of a self-help page to our website, and greater use of technology and our casework software. This includes the introduction of a tool to measure financial gain part way through the year.

Highlights include:

- £322,000 of financial gains for 177 families (see Overall Numbers)
- 18 families set free from the misery of debt (see Overall Numbers)
- The launch of a new project in Newmarket
- The launching of a Community Organising project in partnership with the Trussell Trust
- The appointment of a Volunteer Experience Coordinator who has more than doubled the number of regular visitors
- Greater strategic focus after becoming a Pathfinder Foodbank

Reach Community Projects (CIO)

Trustees' Report (continued)

Overall Numbers:

- 1,384 families were helped with 1,758 issues. This includes 974 issues regarding emergency food requests. There were 2,701 beneficiaries with 1,037 of these children
- More than double the number of families helped with debt than the previous year
- 88 families helped with debt, (up from 30 families for the previous year) 172 beneficiaries
- 20% of all these families helped with debt have become debt free with another 20% with debt payment plans in place and many more on their way
- In the 12 months to the end of August 2022 we achieved financial gains of just over £322,000 for 177 of our families! This includes the 18 families that have been set free from debt and a further 32 families received benefits, and, for some, they had not received the benefit before.
- Total number of people helped with welfare, (benefit, housing, client aid etc.) are 622
- Sadly, we fed record numbers of people through the foodbank project - 2,005. This breaches a milestone that we hoped we would never reach, though not as bad as we feared! It is an increase of 26.7% in the numbers of people fed, and a 24% increase in the numbers of children fed compared to last year. In total, 955 food boxes were given out, 1,281 adults fed and 724 children

The launch of a new project in Newmarket: Following a successful pilot from November 2020 to early 2021, we secured additional funding to launch a debt and welfare project in the neighbouring town of Newmarket. This is in partnership with Newmarket Open Door who run a foodbank and the Voluntary Network who are hosting us. Diana, who joined us in September, is making a big impact helping families 3 days per week from our Newmarket office.

- 69 families helped with 83 issues. This includes 24 issues of debt, 17 with benefits and 16 with client aid. There were 112 beneficiaries, including 32 children.

In addition, we continue a partnership working with a satellite project in Sudbury - they carry out all their face-to-face debt work whereas we supply the back-office work and general welfare and benefits advice. We are beginning to develop partnerships and are starting to help families with debt and welfare in Saffron Walden and Halstead in North Essex. We are also receiving referrals for families in Bury St Edmunds from family support workers who we are working with in West Suffolk.

The launching of a Community Organising Project: We also seized on an opportunity provided to us by our partners, the Trussell Trust and launched a Community Organising project. Amongst other things, Saffron has spent her time speaking to our families, the stakeholders and the general public to better understand the drivers of poverty locally with a view to campaign and influence change wherever we can. This has included market stalls, client forums and surveys. The additional community engagement and the data research has provided has been so invaluable in seeing trends and project development.

Key achievements:

- Basic life skills such as budgeting and cooking identified as a gap in society (along with low income) we are exploring a partnership with the Haverhill Community Kitchen. Money management has already commenced in one senior school and we are in conversation about offering this into a second senior school in Haverhill (more than 100 students received basic money management skills in July).
- Free school meal provision during school holidays has a positive impact on the number of children needing food help (though giving all 6 weeks money in one go has a detrimental impact!) Suffolk County Council have extended the FSM provision during school holidays until 31st March 2023.
- Our Community Organiser (Saffron) was appointed as Co-Chair of SCC's Tackling Poverty Partnership group

The appointment of a Volunteer Experience Coordinator: Following a difficult summer in 2021 in terms of volunteer management, we secured some additional funding and recruited a Volunteer Experience Coordinator. Elaine, an experienced volunteer manager, has encouraged the existing volunteer team and grown our team from 28 to 72 since February!

Greater strategic focus after becoming a Pathfinder Foodbank: We were selected to become a Trussell Trust Pathfinder Foodbank and have been working with a strategic coach/mentor since January that has led to the fine tuning of our strategy. It has given us clearer focus; we've become more intentional with measurable targets which are ambitious, but achievable. This has, and continues to be, a real stretch for us, but it has helped us stay on track with our vision and strategy, as well as highlighted fresh opportunities.

Reach Community Projects (CIO)

Trustees' Report (continued)

Relationships with Partner Organisations: We have continued to strengthen our relationships with new partner organisations. These include Turning Point, Unity Partnership (social prescribing), Community Action Suffolk (Haverhill South) and many more. We are also in the early stages of developing a project with Suffolk Mind and West Suffolk Citizen's Advice.

The challenges and how we overcame:

- The year got off to a very challenging start, not only did we lose our Foodbank Manager with long term sickness, but we also had to relocate the foodbank warehouse in November! It was a baptism of fire for our new Warehouse Assistant who did an excellent job of holding things together before we secured the services of a temporary Foodbank Manager from January to July. Despite the upheaval, there was no break in service, with December being a record month, especially in terms of children.
- We saw an explosion in welfare work; the case may present itself as a simple transaction - like completing a bus pass application (like Veronica's story below) but we soon find many complex layers to unpeel before you can really get to the root of the problem. This coupled with a benefits advisor out of action with a broken arm February/March, and another advisor sick, the team were very stretched at times. This had a detrimental impact in the numbers of debt cases that the team were able to handle. In preparation for the expected explosion in debt, we appointed an additional COA in April. In addition, when a debt trained outreach advisor left, we reviewed our staffing needs and instead of a straight replacement, we decided to recruit for a Welfare Advisor.

Our finances: Our provisional figures for the y/e 30th September; income - £461,926 (up from £396,000 last year). This was higher than anticipated due to the investment from the Trussell Trust into our Community Organising project. Expenditure was around £433,140. We are pleased to see that our income from individuals has risen by 1% to 26%. This equates to a £19,000 increase. We have begun a HNWI programme, it is very much in its infancy but proving fruitful. We are also pleased to report that there has been a further reduction in our grant funding reliance, now at 59% of our income (down from 62% the previous year).

Veronica's* Story

On the surface, Veronica generally seemed fine. But when REACH Community Outreach Advisor Tracey visited her at her home, she discovered Veronica's living conditions were shocking. However, it meant that we were able to get her the help she really needed.

"When Veronica first dropped in at the Resource Centre, she wanted our help to apply for a bus pass as she had just become a pensioner. She was presentable and personable and walked with the aid of a stick. Nothing about her gave away any deeper need.

"She came by to ask for help with a few other things, her requests written on little bits of paper. But something didn't add up, so I suggested I pay her a visit at home.

"From the outside, the house looked very ordinary. But when I went inside, the smell hit me.

"Veronica couldn't get upstairs to the only bathroom and toilet. She was having to strip wash in the kitchen sink and use a commode downstairs. A kind friend would come to empty the commode but when they weren't around, Veronica had to wait.

"Veronica also had a dog but because she couldn't walk him, she lets him out in the back garden. You can imagine the mess out there. Sometimes he toileted in the house.

"Occupational Therapy had already visited and reported Veronica's living conditions to the Housing Team. But when I rang the Housing Team, they still had her categorised as low priority. They have now made her a top priority and are trying to find a bungalow for her and her dog. They are also organising a carer to visit daily.

"Veronica had been on Universal Credit and Housing Benefit and thought that, once she reached pensionable age, things would swap over automatically. She hadn't realised she needed to apply to get her pension and reapply for Housing Benefit. I helped her and she has now received £1900 in Housing Benefit, enough to pay off the rent arrears she had, which is a big relief to her. We've also applied for a reduction in Council Tax which will help her modest income to go further.

Reach Community Projects (CIO)

Trustees' Report (continued)

"I've also applied for Attendance Allowance which will help Veronica pay for her care, someone to walk her dog and clean up the garden. Recently, when her beloved dog needed a vet, Veronica stopped eating – it was the only way she could afford his treatment. He means the world to her, especially as she has no family or social network. I quite understand she doesn't want to give him up, so we're seeing if another charity will help with his vet bills.

"As too often is the case with isolated people, Veronica fell through the statutory safety nets that should have been there for her. This is why REACH has such a vital role to play – we can give clients the time and space that statutory services can't. What would have happened to Veronica, had we not been there for her? I'm just so glad that she came to REACH for help."

Special Thanks: We are indebted to all those who have assisted us in our mission to lift families out of financial crisis and hardship. Thank you to our many volunteers who give their time on a regular basis. Thank you too to our partners, these include Trussell Trust, West Suffolk Council, South Cambridgeshire District Council, Suffolk Community Foundation, Haverhill Town Council, Cambridgeshire Community Foundation, Mrs LD Rope, Beatrice Laing, Postcode Places Trust, Suffolk County Council, Garfield Weston, Essex Community Foundation, AllChurches Trust, Denbury Charitable Fund, Mrs Smith & Mount Trust and of course those that wish to remain anonymous. There are many more individual donors, businesses, community groups, churches and schools who have all contributed to make 2021-22 a much easier task than we could ever have imagined! Thank you

Henry Wilson MBE

Chief Executive Officer

Plans for future periods

The next 12 months include (alongside increased debt, welfare and food needs):

- Strengthen and develop a volunteer led income maximisation team
- Develop an effective evaluation process to gauge client's emotional well-being
- Recruit specialist volunteers to carry out more in depth data analysis and research
- Set up agreements with potential trusted partners to include data sharing
- Develop a debt and welfare project in North Essex
- Expand our mobile hub service into other locations in Haverhill and beyond
- Develop life skills with partners to reduce the need for our emergency aid and debt support
- Continue to work with partners on identifying gaps in service provision

Financial review

Policy of reserves

Reserves are that part of a charity's unrestricted funds that is freely available to spend on any of the charity's purposes. Reach maintains free unrestricted reserves:

- To provide a level of working capital that protects the continuity of its core work
- To provide a level of funding for unexpected opportunities
- To provide cover for risks such as unforeseen expenditure or unanticipated loss of income.

We endeavour to maintain 3 months of staffing and running costs.

The board of trustees will review the above criteria with reference to Reach's strategy and Annual Plan and determine the target level of free reserves to meet these.

The board of trustees will at times designate funds from free reserves for significant project costs or replacement of major assets.

The accounts set out on the following pages reflect the activities of the charity.

The annual report was approved by the trustees of the charity on24/08/2023 and signed on its behalf by:

.....
Roy Graham
Chairman and Trustee

Reach Community Projects (CIO)

Trustees' Report (continued)

Statement of Trustees' Responsibilities

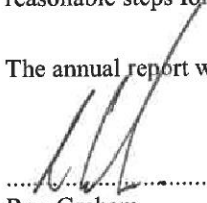
The trustees are responsible for preparing the trustees' report and the financial statements in accordance with the United Kingdom Accounting Standards (United Kingdom Generally Accepted Accounting Practice) and applicable law and regulations.

The law applicable to charities requires the trustees to prepare financial statements for each financial year which give a true and fair view of the state of affairs of the charity and of the incoming resources and application of resources of the charity for that period. In preparing these financial statements, the trustees are required to:

- select suitable accounting policies and then apply them consistently;
- observe the methods and principles in the Charities SORP;
- make judgements and estimates that are reasonable and prudent;
- state whether applicable accounting standards have been followed, subject to any material departures disclosed and explained in the financial statements; and
- prepare the financial statements on the going concern basis unless it is inappropriate to presume that the charity will continue in business.

The trustees are responsible for keeping proper accounting records that disclose with reasonable accuracy at any time the financial position of the charity and enable them to ensure that the financial statements comply with the Charities Act 2011, the Charities (Accounts and Reports) Regulations 2008, and the provisions of the constitution. The trustees are also responsible for safeguarding the assets of the charity and hence for taking reasonable steps for the prevention and detection of fraud and other irregularities.

The annual report was approved by the trustees of the charity on 24/08/23 and signed on its behalf by:


.....
Roy Graham
Chairman and trustee

Reach Community Projects (CIO)

Independent Examiner's Report to the trustees of Reach Community Projects (CIO)

I report to the trustees on my examination of the accounts of Reach Community Projects (CIO) for the year ended 30 September 2022.

Responsibilities and basis of report

As the charity trustees of Reach Community Projects (CIO) you are responsible for the preparation of the accounts in accordance with the requirements of the Charities Act 2011 ('the Act').

I report in respect of my examination of the Reach Community Projects (CIO)'s accounts carried out under section 145 of the 2011 Act and in carrying out my examination I have followed all the applicable Directions given by the Charity Commission under section 145(5)(b) of the Act.

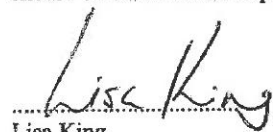
Independent examiner's statement

Since Reach Community Projects (CIO)'s gross income exceeded £250,000 your examiner must be a member of a body listed in section 145 of the 2011 Act. I confirm that I am qualified to undertake the examination because I am a member of Chartered Certified Accountant, which is one of the listed bodies.

I have completed my examination. I confirm that no material matters have come to my attention in connection with the examination giving me cause to believe that in any material respect:

1. accounting records were not kept in respect of Reach Community Projects (CIO) as required by section 130 of the Act; or
2. the accounts do not accord with those records; or
3. the accounts do not comply with the accounting requirements concerning the form and content of accounts set out in the Charities (Accounts and Reports) Regulations 2008 other than any requirement that the accounts give a 'true and fair view' which is not a matter considered as part of an independent examination.

I have no concerns and have come across no other matters in connection with the examination to which attention should be drawn in this report in order to enable a proper understanding of the accounts to be reached.



Lisa King
Chartered Certified Accountant

8 The Hamiltons
Newmarket
Suffolk
CB8 0NF

Date: 28 July 2023

Reach Community Projects (CIO)
(Registration number: 1169108)
Balance Sheet as at 30 September 2022

	Note	2022 £	2021 £
Fixed assets			
Tangible assets	9	3,063	3,415
Current assets			
Debtors	10	5,109	4,034
Cash at bank and in hand	11	<u>173,699</u>	<u>180,816</u>
		178,808	184,850
Creditors: Amounts falling due within one year	12	<u>(10,264)</u>	<u>(9,968)</u>
Net current assets		<u>168,544</u>	<u>174,882</u>
Total assets less current liabilities		171,607	178,297
Creditors: Amounts falling due after more than one year	13	<u>(85,259)</u>	<u>-</u>
Net assets		<u>86,348</u>	<u>178,297</u>
Funds of the charity:			
Restricted income funds			
Restricted funds		72,748	102,080
Unrestricted income funds			
Unrestricted funds		<u>13,600</u>	<u>76,217</u>
Total funds	15	<u>86,348</u>	<u>178,297</u>

The financial statements on pages 10 to 22 were approved by the trustees, and authorised for issue on ~~24/08/22~~ 24/08/23 and signed on their behalf by:

.....
 Roy Graham
 Chairman and trustee

Reach Community Projects (CIO)

Notes to the Financial Statements for the Year Ended 30 September 2022

1 Accounting policies

Statement of compliance

The financial statements have been prepared in accordance with the second edition of the Charities Statement of Recommended Practice issued in October 2019, the Financial Reporting Standard applicable in the United Kingdom and Republic of Ireland (FRS 102) and the Charities Act 2011.

Basis of preparation

Reach Community Projects (CIO) meets the definition of a public benefit entity under FRS 102. The accounts (financial statements) have been prepared under the historical cost convention with items recognised at cost or transaction value unless otherwise stated in the relevant note(s) to these accounts.

Going concern

The trustees consider that there are no material uncertainties about the charity's ability to continue as a going concern.

Income and endowments

Voluntary income including donations, gifts, legacies and grants that provide core funding or are of a general nature is recognised when the charity has entitlement to the income, it is probable that the income will be received and the amount can be measured with sufficient reliability.

Donations and legacies

Donations and legacies are recognised on a receivable basis when receipt is probable and the amount can be reliably measured.

Grants receivable

Grants are recognised when the charity has an entitlement to the funds and any conditions linked to the grants have been met. Where performance conditions are attached to the grant and are yet to be met, the income is recognised as a liability and included on the balance sheet as deferred income to be released.

Investment income

Dividends are recognised once the dividend has been declared and notification has been received of the dividend due.

Expenditure

All expenditure is recognised once there is a legal or constructive obligation to that expenditure, it is probable settlement is required and the amount can be measured reliably. All costs are allocated to the applicable expenditure heading that aggregate similar costs to that category. Where costs cannot be directly attributed to particular headings they have been allocated on a basis consistent with the use of resources, with central staff costs allocated on the basis of time spent, and depreciation charges allocated on the portion of the asset's use. Other support costs are allocated based on the spread of staff costs.

Raising funds

These are costs incurred in attracting voluntary income, the management of investments and those incurred in trading activities that raise funds.

Reach Community Projects (CIO)

Notes to the Financial Statements for the Year Ended 30 September 2022 (continued)

Charitable activities

Charitable expenditure comprises those costs incurred by the charity in the delivery of its activities and services for its beneficiaries. It includes both costs that can be allocated directly to such activities and those costs of an indirect nature necessary to support them.

Support costs

Support costs include central functions and have been allocated to activity cost categories on a basis consistent with the use of resources, for example, allocating property costs by floor areas, or per capita, staff costs by the time spent and other costs by their usage.

Governance costs

These include the costs attributable to the charity's compliance with constitutional and statutory requirements, including audit, strategic management and trustees meetings and reimbursed expenses.

Taxation

The charity is considered to pass the tests set out in Paragraph 1 Schedule 6 of the Finance Act 2010 and therefore it meets the definition of a charitable company for UK corporation tax purposes. Accordingly, the charity is potentially exempt from taxation in respect of income or capital gains received within categories covered by Chapter 3 Part 11 of the Corporation Tax Act 2010 or Section 256 of the Taxation of Chargeable Gains Act 1992, to the extent that such income or gains are applied exclusively to charitable purposes.

Tangible fixed assets

Individual fixed assets costing £100.00 or more are initially recorded at cost, less any subsequent accumulated depreciation and subsequent accumulated impairment losses.

Depreciation and amortisation

Depreciation is provided on tangible fixed assets so as to write off the cost or valuation, less any estimated residual value, over their expected useful economic life.

Trade debtors

Trade debtors are amounts due from customers for merchandise sold or services performed in the ordinary course of business.

Trade debtors are recognised initially at the transaction price. They are subsequently measured at amortised cost using the effective interest method, less provision for impairment. A provision for the impairment of trade debtors is established when there is objective evidence that the charity will not be able to collect all amounts due according to the original terms of the receivables.

Cash and cash equivalents

Cash and cash equivalents comprise cash on hand and call deposits, and other short-term highly liquid investments that are readily convertible to a known amount of cash and are subject to an insignificant risk of change in value.

Trade creditors

Trade creditors are obligations to pay for goods or services that have been acquired in the ordinary course of business from suppliers. Accounts payable are classified as current liabilities if they do not have an unconditional right, at the end of the reporting period, to defer settlement of the creditor for at least twelve months after the reporting date. If there is an unconditional right to defer settlement for at least twelve months after the reporting date, they are presented as non-current liabilities.

Reach Community Projects (CIO)

Notes to the Financial Statements for the Year Ended 30 September 2022 (continued)

Borrowings

Interest-bearing borrowings are initially recorded at fair value, net of transaction costs. Interest-bearing borrowings are subsequently carried at amortised cost, with the difference between the proceeds, net of transaction costs, and the amount due on redemption being recognised as a charge to the Statement of Financial Activities over the period of the relevant borrowing.

Interest expense is recognised on the basis of the effective interest method and is included in interest payable and similar charges.

Borrowings are classified as current liabilities unless the charity has an unconditional right to defer settlement of the liability for at least twelve months after the reporting date.

Fund structure

Unrestricted income funds are general funds that are available for use at the trustees discretion in furtherance of the objectives of the charity.

Restricted income funds are those donated for use in a particular area or for specific purposes, the use of which is restricted to that area or purpose.

Pensions and other post retirement obligations

The charity operates a defined contribution pension scheme which is a pension plan under which fixed contributions are paid into a pension fund and the charity has no legal or constructive obligation to pay further contributions even if the fund does not hold sufficient assets to pay all employees the benefits relating to employee service in the current and prior periods.

Contributions to defined contribution plans are recognised in the Statement of Financial Activities when they are due. If contribution payments exceed the contribution due for service, the excess is recognised as a prepayment.

Financial instruments

Classification

Financial assets and financial liabilities are recognised when the charity becomes a party to the contractual provisions of the instrument.

Financial liabilities and equity instruments are classified according to the substance of the contractual arrangements entered into. An equity instrument is any contract that evidences a residual interest in the assets of the charity after deducting all of its liabilities.

Reach Community Projects (CIO)

Notes to the Financial Statements for the Year Ended 30 September 2022 (continued)

Recognition and measurement

All financial assets and liabilities are initially measured at transaction price (including transaction costs), except for those financial assets classified as at fair value through profit or loss, which are initially measured at fair value (which is normally the transaction price excluding transaction costs), unless the arrangement constitutes a financing transaction. If an arrangement constitutes a financing transaction, the financial asset or financial liability is measured at the present value of the future payments discounted at a market rate of interest for a similar debt instrument.

Financial assets and liabilities are only offset in the statement of financial position when, and only when there exists a legally enforceable right to set off the recognised amounts and the charity intends either to settle on a net basis, or to realise the asset and settle the liability simultaneously.

Financial assets are derecognised when and only when a) the contractual rights to the cash flows from the financial asset expire or are settled, b) the charity transfers to another party substantially all of the risks and rewards of ownership of the financial asset, or c) the charity, despite having retained some, but not all, significant risks and rewards of ownership, has transferred control of the asset to another party.

Financial liabilities are derecognised only when the obligation specified in the contract is discharged, cancelled or expires.

Reach Community Projects (CIO)

Notes to the Financial Statements for the Year Ended 30 September 2022 (continued)

Debt instruments

Debt instruments which meet the following conditions are subsequently measured at amortised cost using the effective interest method:

- (a) The contractual return to the holder is (i) a fixed amount; (ii) a positive fixed rate or a positive variable rate; or (iii) a combination of a positive or a negative fixed rate and a positive variable rate.
- (b) The contract may provide for repayments of the principal or the return to the holder (but not both) to be linked to a single relevant observable index of general price inflation of the currency in which the debt instrument is denominated, provided such links are not leveraged.
- (c) The contract may provide for a determinable variation of the return to the holder during the life of the instrument, provided that (i) the new rate satisfies condition (a) and the variation is not contingent on future events other than (1) a change of a contractual variable rate; (2) to protect the holder against credit deterioration of the issuer; (3) changes in levies applied by a central bank or arising from changes in relevant taxation or law; or (ii) the new rate is a market rate of interest and satisfies condition (a).
- (d) There is no contractual provision that could, by its terms, result in the holder losing the principal amount or any interest attributable to the current period or prior periods.
- (e) Contractual provisions that permit the issuer to prepay a debt instrument or permit the holder to put it back to the issuer before maturity are not contingent on future events, other than to protect the holder against the credit deterioration of the issuer or a change in control of the issuer, or to protect the holder or issuer against changes in levies applied by a central bank or arising from changes in relevant taxation or law.
- (f) Contractual provisions may permit the extension of the term of the debt instrument, provided that the return to the holder and any other contractual provisions applicable during the extended term satisfy the conditions of paragraphs (a) to (c).

Debt instruments that are classified as payable or receivable within one year on initial recognition and which meet the above conditions are measured at the undiscounted amount of the cash or other consideration expected to be paid or received, net of impairment.

With the exception of some hedging instruments, other debt instruments not meeting these conditions are measured at fair value through profit or loss.

Commitments to make and receive loans which meet the conditions mentioned above are measured at cost (which may be nil) less impairment.

Investments

Investments in non-convertible preference shares and non-puttable ordinary or preference shares (where shares are publicly traded or their fair value is reliably measurable) are measured at fair value through profit or loss. Where fair value cannot be measured reliably, investments are measured at cost less impairment.

Investments in subsidiaries and associates are measured at cost less impairment. For investments in subsidiaries acquired for consideration including the issue of shares qualifying for merger relief, cost is measured by reference to the nominal value of the shares issued plus fair value of other consideration. Any premium is ignored.

Reach Community Projects (CIO)

Notes to the Financial Statements for the Year Ended 30 September 2022 (continued)

Derivative financial instruments

The charity uses derivative financial instruments to reduce exposure to foreign exchange risk and interest rate movements. The charity does not hold or issue derivative financial instruments for speculative purposes.

Derivatives are initially recognised at fair value at the date a derivative contract is entered into and are subsequently remeasured to their fair value at each reporting date. The resulting gain or loss is recognised in statement of financial activities immediately unless the derivative is designated and effective as a hedging instrument, in which event the timing of the recognition in statement of financial activities depends on the nature of the hedge relationship.

Fair value measurement

The best evidence of fair value is a quoted price for an identical asset in an active market. When quoted prices are unavailable, the price of a recent transaction for an identical asset provides evidence of fair value as long as there has not been a significant change in economic circumstances or a significant lapse of time since the transaction took place. If the market is not active and recent transactions of an identical asset on their own are not a good estimate of fair value, the fair value is estimated by using a valuation technique.

2 Income from donations and legacies

	Unrestricted funds General £	Restricted funds £	Total funds £
Donations and legacies;			
Donations from individuals	15,183	6,203	21,386
Legacies	61,435	12,982	74,417
Gift aid reclaimed	-	1,003	1,003
Grants, including capital grants;			
Grants from other charities	54,955	190,968	245,923
Regular giving and capital donations	31,075	7,894	38,969
Total for 2022	162,648	219,050	381,698
Total for 2021	85,360	311,034	396,394

3 Investment income

	Restricted funds £	Total funds £
Interest receivable and similar income;		
Interest receivable on bank deposits	1	1
Total for 2022	1	1
Total for 2021	1	1

Reach Community Projects (CIO)

Notes to the Financial Statements for the Year Ended 30 September 2022 (continued)

4 Analysis of governance and support costs

Governance costs

	Unrestricted funds General £	Total funds £
Independent examiner fees		
Examination of the financial statements	600	600
Total for 2022	<u>600</u>	<u>600</u>
Total for 2021	<u>600</u>	<u>600</u>

5 Trustees remuneration and expenses

No trustees, nor any persons connected with them, have received any remuneration from the charity during the year.

No trustees have received any reimbursed expenses from the charity during the year.

Reach Community Projects (CIO)

Notes to the Financial Statements for the Year Ended 30 September 2022 (continued)

6 Staff costs

The aggregate payroll costs were as follows:

	2022 £	2021 £
Staff costs during the year were:		
Wages and salaries	281,896	179,637
Social security costs	14,853	8,164
Pension costs	7,133	5,003
Other staff costs	8,565	5,146
	<u>312,447</u>	<u>197,950</u>

16 (2021 - 11) of the above employees participated in the Defined Contribution Pension Schemes.

Contributions to the employee pension schemes for the year totalled £7,133 (2021 - £5,003).

No employee received emoluments of more than £60,000 during the year

7 Independent examiner's remuneration

	2022 £	2021 £
Examination of the financial statements	<u>600</u>	<u>600</u>

Reach Community Projects (CIO)

Notes to the Financial Statements for the Year Ended 30 September 2022 (continued)

8 Taxation

The charity is a registered charity and is therefore exempt from taxation.

9 Tangible fixed assets

	Furniture and equipment £	Total £
Cost		
At 1 October 2021	26,216	26,216
At 30 September 2022	26,216	26,216
Depreciation		
At 1 October 2021	22,801	22,801
Charge for the year	352	352
At 30 September 2022	23,153	23,153
Net book value		
At 30 September 2022	3,063	3,063
At 30 September 2021	3,415	3,415

10 Debtors

	2022 £	2021 £
Prepayments	1	-
Other debtors	5,108	4,034
	5,109	4,034

11 Cash and cash equivalents

	2022 £	2021 £
Cash on hand	456	(174)
Cash at bank	173,243	180,990
	173,699	180,816

Reach Community Projects (CIO)

Notes to the Financial Statements for the Year Ended 30 September 2022 (continued)

12 Creditors: amounts falling due within one year

	2022 £	2021 £
Trade creditors	1,878	4,538
Other taxation and social security	7,186	4,829
Other creditors	-	1
Accruals	1,200	600
	10,264	9,968

13 Creditors: amounts falling due after one year

	2022
	£
Deferred income	85,259

Deferred income refers to grant income received in the year that has been carried forward to the following year.

14 Pension and other schemes

Defined contribution pension scheme

The charity operates a defined contribution pension scheme. The pension cost charge for the year represents contributions payable by the charity to the scheme and amounted to £7,133 (2021 - £5,003).

15 Funds

	Balance at 1 October 2021 £	Incoming resources £	Resources expended £	Transfers £	Balance at 30 September 2022 £
Unrestricted funds					
General	76,220	162,648	(191,301)	(33,967)	13,600
Restricted funds	102,078	219,141	(282,438)	33,967	72,748
Total funds	178,298	381,789	(473,739)	-	86,348

Reach Community Projects (CIO)

Notes to the Financial Statements for the Year Ended 30 September 2022 (continued)

	Balance at 1 October 2021 £	Incoming resources £	Resources expended £	Transfers £	Balance at 30 September 2022 £
Unrestricted					
<i>General</i>					
Reach	67,818	162,648	(191,301)	(33,967)	5,198
Social Enterprise	8,402	-	-	-	8,402
	<u>76,220</u>	<u>162,648</u>	<u>(191,301)</u>	<u>(33,967)</u>	<u>13,600</u>
Restricted					
Foodbank	28,695	27,484	(90,146)	33,967	-
Reach into the Community	70,123	150,087	(160,492)	-	59,718
Client Aid	3,260	41,570	(31,800)	-	13,030
	<u>102,078</u>	<u>219,141</u>	<u>(282,438)</u>	<u>33,967</u>	<u>72,748</u>
Total funds	<u>178,298</u>	<u>381,789</u>	<u>(473,739)</u>	<u>-</u>	<u>86,348</u>
	Balance at 1 October 2020 £	Incoming resources £	Resources expended £	Transfers £	Balance at 30 September 2021 £
Unrestricted funds					
General	69,260	85,360	(49,919)	(28,484)	76,217
Other unrestricted funds	<u>(12,363)</u>	-	-	12,363	-
Total unrestricted funds	56,897	85,360	(49,919)	(16,121)	76,217
Restricted funds	<u>77,623</u>	<u>311,035</u>	<u>(302,699)</u>	<u>16,121</u>	<u>102,080</u>
Total funds	<u>134,520</u>	<u>396,395</u>	<u>(352,618)</u>	<u>-</u>	<u>178,297</u>

REACH COMMUNITY PROJECTS

England & Wales - Charity number 1169108

Accounts

Charity registration number: 1169108

Reach Community Projects (CIO)

Annual Report and Financial Statements

for the Year Ended 30 September 2021

Reach Community Projects (CIO)

Contents

Reference and Administrative Details	1
Trustees' Report	2 to 4
Statement of Trustees' Responsibilities	5
Independent Examiner's Report	6
Statement of Financial Activities	7
Balance Sheet	8
Notes to the Financial Statements	9 to 16

Reach Community Projects (CIO)

Reference and Administrative Details

Chairman	Roy Graham
Trustees	Roy Graham Alison Chorley Gavin Rowden David Howell Claire Darracott
Senior Management Team	Henry Wilson MBE Ann Allen - Resigned 31 March 2021 Annetta Record Sandra Mann Justine Cammiss-Strudwick - Appointed 1 April 2021
Registered Office	Room 1 Wisdom Facilities Centre 42 Hollands Road Haverhill Suffolk CB9 8SA
Charity Registration Number	1169108
Independent Examiner	Burdett King Accountancy Limited 8 The Hamiltons Newmarket Suffolk CB8 0NF

Reach Community Projects (CIO)

Trustees' Report

The trustees present the annual report together with the financial statements of the charity for the year ended 30 September 2021.

Trustees

Roy Graham
Alison Chorley
Gavin Rowden
David Howell
Claire Darracott

Objectives and activities

Haverhill is an area of great need, characterised by high levels of social deprivation, debt and low income. At REACH we believe that everyone deserves to live their lives to the full. However, poverty has a devastating effect on individual and family life. Debt, low income and homelessness can lead to mental health problems, relationship breakdown, low aspiration, marginalisation, poor health and low self-esteem.

The purpose of REACH is to support individuals/families in financial crisis in and around Haverhill, restoring people's dignity and reviving their hope.

To assist us with our mission we run a number of projects and activities aimed at uncovering and resolving the root issues that our clients are experiencing:

- Resource Centre – A drop-in centre and access point for all REACH resources, open weekdays, providing a warm welcome and practical help for people struggling with poverty, e.g. housing, benefit, form completion, job searching and so much more
- Money Advice – Free face to face debt advice for people struggling with debt
- Foodbank – Emergency food for unexpected crises
- Starter Packs – Essential bedding and kitchenware when someone literally has nothing
- Client Aid – Financial assistance through donation-based projects such as Acts 435 (www.acts435.org.uk) to provide essential items such as beds, white goods, gas and electricity
- Reach into the Community – All of the REACH resources taken out to those that cannot get in to see us whether it's because of ill health or geographical reasons

Our key values are:

- Generosity – if in doubt, we will always seek to be generous
- Responsibility – This has to be coupled with responsibility, both from the people we are helping and how we distribute the resources entrusted to us
- Believing for better – Our current circumstances do not have to determine our future
- Honesty – Just as we need the people, we are helping to be honest with us, we too need to be honest about what we can realistically do to help them.

Structure, governance and management

Nature of governing document

As a Charitable Incorporated Organisation (CIO) we have a Board of Trustees which meets on a regular basis. The board oversees and reviews the running of the charity including carefully monitoring our funding and our impact on the local community. New trustees are appointed based on the skills that they will bring to the trustee group.

Organisational structure

We have 11 members of staff. Staff roles are Projects Director, Office Manager, Client Relationships Manager, 3 Community Outreach Advisers, Benefits & Welfare Adviser, Projects Administrator, Apprentice Administrator, Foodbank Manager and Social Enterprise E-Commerce Co-ordinator.

Reach Community Projects (CIO)

Trustees' Report

We also have around 50 volunteers who help with all aspects of the charity, from administration to Chaperones, to Foodbank, to Resource Centre advisers. We have seen an increase in young people volunteering with us for their Duke of Edinburgh Award. We have a number of volunteers who require additional support, this includes partnerships with Horace Eve house (Mencap), and Broadlands Hall School.

A large proportion of our client-facing work takes place at our Resource Centre. The Resource Centre is a drop-in centre, open from 2-5pm Monday-Friday plus mornings/evenings for appointments. It is our foodbank distribution centre, but we are so much more than a foodbank. We case note our client visits and work with our clients to uncover the reasons for the visit, with the aim of resolving the underlying issues that caused them to come to us. Although there is not time restriction on how long a client can spend with us, we do tend to set up appointments for the more complex cases outside of drop-in hours.

Public benefit

The trustees confirm that they have complied with the requirements of section 17 of the Charities Act 2011 to have due regard to the public benefit guidance published by the Charity Commission for England and Wales.

Achievements and performance

2020/2021 was a challenging year for everybody. We spent most of the year working through a global pandemic and as a result had to change our way of working to meet government restrictions, but still be available to the local community who needed us. We stopped all face to face interactions and moved over to virtual / telephone interactions with door step drops to deliver emergency food boxes. As restrictions lifted we were able to move back to a more normal way of working.

During the pandemic we lost many of our regular volunteers. We recruited new volunteers (many of which had been placed on furlough by their employers), and again as restrictions lifted some of previous volunteers were able to come back to us.

Despite this we were still able to:

- Distribute 787 food boxes that fed 1578 people (546 were children)
- Helped 62 families with entrenched debt, including 12 of these (19%) become free from debt
- Distributed a total of £5,499 winter fuel poverty grants to 28 families to help them keep their homes warm over the winter period
- Help 73 families living in the rural areas surrounding Haverhill

We launched a new project in Newmarket offering debt and welfare advice (there is already a foodbank in Newmarket), because of the number of self referrals as well as agency referrals we were getting in this area.

We are indebted to all those who have assisted us in our mission to lift families out of poverty in and around Haverhill. Thank you to our many volunteers who give their time on a regular basis. Thank you too to our partners, these include Trussell Trust, West Suffolk Council, South Cambridgeshire District Council, Suffolk Community Foundation, Haverhill Town Council, Cambridgeshire Community Foundation, Mrs L D Rope, Beatrice Laing, Postcode Places Trust, Suffolk County Council, Garfield Weston Foundation and of course those that wish to remain anonymous. There are many more individual donors, businesses, community groups, churches and schools who have all contributed to make 2020-21 a very fruitful year. Thank you

Roy Graham - Chair of Trustees, Henry Wilson - CEO

Plans for future periods

Our immediate plans focus on helping families who are in financial crisis particularly as the country starts to go in to a cost of living crisis. We are expecting an increase in the need for debt advice over the next year as higher utility bills and cost of fuel starts to hit.

We want to get better at our strategic planning and therefore intend to restructure our leadership team early in the next financial year. This will enable us to get a proper strategic plan in place for the next three years and give us a clear direction.

Reach Community Projects (CIO)

Trustees' Report

We are working with partners to expand our offer geographically, but also set up food distribution points in more accessible areas that are staffed by volunteers from local churches. We will shortly be launching our online debt tools, that will direct people through the maze of debt whilst waiting for an adviser to contact them.

Our longer term ideas include providing more volunteering options especially to young people who are currently unemployed. Extending our outreach work to more rural villages and areas where there is no current debt advice provision to make it more accessible to people living in these areas. We are also developing our partnerships with other agencies, charities and churches to help create a whole circle of support around an individual or family in need.

Financial review

Policy on reserves

Reserves are that part of a charity's unrestricted funds that is freely available to spend on any of the charity's purposes. REACH maintains free unrestricted reserves:

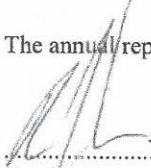
- To provide a level of working capital that protects the continuity of its core work
- To provide a level of funding for unexpected opportunities
- To provide cover for risks such as unforeseen expenditure or unanticipated loss of income.

The board of trustees will review the above criteria with reference to REACH's strategy and Annual Plan and determine the target level of free reserves to meet these.

The board of trustees will at times designate funds from free reserves for significant project costs or replacement of major assets.

The accounts set out on the following pages reflect the activities of the charity.

The annual report was approved by the trustees of the charity on 27 July 2022 and signed on its behalf by:



.....
Roy Graham
Chairman and Trustee

Reach Community Projects (CIO)

Statement of Trustees' Responsibilities

The trustees (who are also the directors of Reach Community Projects (CIO) for the purposes of company law) are responsible for preparing the trustees' report and the financial statements in accordance with the United Kingdom Accounting Standards (United Kingdom Generally Accepted Accounting Practice) and applicable law and regulations.

Company law requires the trustees to prepare financial statements for each financial year. Under company law the trustees must not approve the financial statements unless they are satisfied that they give a true and fair view of the state of affairs of the charitable company and of its incoming resources and application of resources, including its income and expenditure, for that period. In preparing these financial statements, the trustees are required to:

- select suitable accounting policies and apply them consistently;
- observe the methods and principles in the Charities SORP;
- make judgements and estimates that are reasonable and prudent;
- state whether applicable UK Accounting Standards have been followed, subject to any material departures disclosed and explained in the financial statements; and
- prepare the financial statements on the going concern basis unless it is inappropriate to presume that the charitable company will continue in business.

The trustees are responsible for keeping adequate accounting records that are sufficient to show and explain the charitable company's transactions and disclose with reasonable accuracy at any time the financial position of the charitable company and enable them to ensure that the financial statements comply with the Companies Act 2006. They are also responsible for safeguarding the assets of the charitable company and hence for taking reasonable steps for the prevention and detection of fraud and other irregularities.

Reach Community Projects (CIO)

Independent Examiner's Report to the trustees of Reach Community Projects (CIO)

I report to the charity trustees on my examination of the accounts of the charity for the year ended 30 September 2021 which are set out on pages 7 to 16.

Respective responsibilities of trustees and examiner

As the charity's trustees of Reach Community Projects (CIO) you are responsible for the preparation of the accounts in accordance with the requirements of the Charities Act 2011.

I report in respect of my examination of your charity's accounts as carried out under section 145 of the Charities Act 2011 and in carrying out my examination I have followed the Directions given by the Charity Commission under section 145(5)(b) of the 2011 Act.

Independent examiner's statement

Since Reach Community Projects (CIO)'s gross income exceeded £250,000 your examiner must be a member of a body listed in section 145 of the 2011 Act. I confirm that I am qualified to undertake the examination because I am a member of Chartered Certified Accountant, which is one of the listed bodies.

I have completed my examination. I confirm that no matters have come to my attention in connection with the examination giving me cause to believe:

1. accounting records were not kept in respect of Reach Community Projects (CIO) as required by section 130 of the Charities Act; or
2. the accounts do not accord with those records; or
3. the accounts do not comply with the accounting requirements concerning the form and content of accounts set out in the Charities (Accounts and Reports) Regulations 2008 other than any requirement that the accounts give a 'true and fair view' which is not a matter considered as part of an independent examination.

I have no concerns and have come across no other matters in connection with the examination to which attention should be drawn in this report in order to enable a proper understanding of the accounts to be reached.


.....
Lisa King
Chartered Certified Accountant
Burdett King Accountancy Limited
8 The Hamiltons
Newmarket
Suffolk
CB8 0NF

Date: 5 OCTOBER 2022

Reach Community Projects (CIO)

Statement of Financial Activities for the Year Ended 30 September 2021 (Including Income and Expenditure Account and Statement of Total Recognised Gains and Losses)

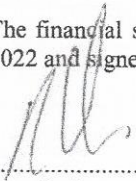
	Note	Unrestricted funds £	Restricted funds £	Total 2021 £
Income and Endowments from:				
Donations and legacies	2	85,360	311,034	396,394
Investment income	3	-	1	1
Other income		-	(2)	(2)
Total income		<u>85,360</u>	<u>311,033</u>	<u>396,393</u>
Expenditure on:				
Raising funds		-	(27,991)	(27,991)
Charitable activities		(37,416)	(88,815)	(126,231)
Other expenditure		(12,500)	(185,893)	(198,393)
Total expenditure		<u>(49,916)</u>	<u>(302,699)</u>	<u>(352,615)</u>
Net income		35,444	8,334	43,778
Transfers between funds		(16,121)	16,121	-
Net movement in funds		19,323	24,455	43,778
Reconciliation of funds				
Total funds brought forward		<u>56,897</u>	<u>77,623</u>	<u>134,520</u>
Total funds carried forward	12	<u>76,220</u>	<u>102,078</u>	<u>178,298</u>
	Note	Unrestricted funds £	Restricted funds £	Total 2020 £
Income and Endowments from:				
Donations and legacies	2	185,215	152,160	337,375
Investment income	3	3	-	3
Total income		<u>185,218</u>	<u>152,160</u>	<u>337,378</u>
Expenditure on:				
Raising funds		(33,581)	(872)	(34,453)
Charitable activities		53,213	(123,590)	(70,377)
Other expenditure		(155,437)	(7,207)	(162,644)
Total expenditure		<u>(135,805)</u>	<u>(131,669)</u>	<u>(267,474)</u>
Net income		49,413	20,491	69,904
Net movement in funds		49,413	20,491	69,904
Reconciliation of funds				
Total funds brought forward		<u>7,487</u>	<u>57,132</u>	<u>64,619</u>
Total funds carried forward	12	<u>56,900</u>	<u>77,623</u>	<u>134,523</u>

All of the charity's activities derive from continuing operations during the above two periods.

Reach Community Projects (CIO)
(Registration number: 12345678)
Balance Sheet as at 30 September 2021

	Note	2021 £	2020 £
Fixed assets			
Tangible assets	9	3,415	-
Current assets			
Debtors	10	4,034	6,373
Cash at bank and in hand		<u>180,816</u>	<u>137,532</u>
		184,850	143,905
Creditors: Amounts falling due within one year	11	<u>(9,967)</u>	<u>(9,382)</u>
Net current assets		<u>174,883</u>	<u>134,523</u>
Net assets		<u>178,298</u>	<u>134,523</u>
Funds of the charity:			
Restricted income funds			
Restricted funds		102,078	77,623
Unrestricted income funds			
Unrestricted funds		<u>76,220</u>	<u>56,900</u>
Total funds	12	<u>178,298</u>	<u>134,523</u>

The financial statements on pages 7 to 16 were approved by the trustees, and authorised for issue on 27 July 2022 and signed on their behalf by:



 Roy Graham
 Chairman and Trustee

Reach Community Projects (CIO)

Notes to the Financial Statements for the Year Ended 30 September 2021

1 Accounting policies

Summary of significant accounting policies and key accounting estimates

The principal accounting policies applied in the preparation of these financial statements are set out below. These policies have been consistently applied to all the years presented, unless otherwise stated.

Statement of compliance

The financial statements have been prepared in accordance with Accounting and Reporting by Charities: Statement of Recommended Practice applicable to charities preparing their accounts in accordance with the Financial Reporting Standard applicable in the UK and Republic of Ireland (FRS 102) (effective 1 January 2015) - (Charities SORP (FRS 102)), the Financial Reporting Standard applicable in the UK and Republic of Ireland (FRS 102). They also comply with the Companies Act 2006 and Charities Act 2011.

Basis of preparation

Reach Community Projects (CIO) meets the definition of a public benefit entity under FRS 102. Assets and liabilities are initially recognised at historical cost or transaction value unless otherwise stated in the relevant accounting policy notes.

Going concern

The trustees consider that there are no material uncertainties about the charity's ability to continue as a going concern nor any significant areas of uncertainty that affect the carrying value of assets held by the charity.

Income and endowments

All income is recognised once the charity has entitlement to the income, it is probable that the income will be received and the amount of the income receivable can be measured reliably.

Donations and legacies

Donations are recognised when the charity has been notified in writing of both the amount and settlement date. In the event that a donation is subject to conditions that require a level of performance by the charity before the charity is entitled to the funds, the income is deferred and not recognised until either those conditions are fully met, or the fulfilment of those conditions is wholly within the control of the charity and it is probable that these conditions will be fulfilled in the reporting period.

Legacy gifts are recognised on a case by case basis following the grant of probate when the administrator/executor for the estate has communicated in writing both the amount and settlement date. In the event that the gift is in the form of an asset other than cash or a financial asset traded on a recognised stock exchange, recognition is subject to the value of the gift being reliably measurable with a degree of reasonable accuracy and the title to the asset having been transferred to the charity.

Grants receivable

Grants are recognised when the charity has an entitlement to the funds and any conditions linked to the grants have been met. Where performance conditions are attached to the grant and are yet to be met, the income is recognised as a liability and included on the balance sheet as deferred income to be released.

Investment income

Dividends are recognised once the dividend has been declared and notification has been received of the dividend due.

Reach Community Projects (CIO)

Notes to the Financial Statements for the Year Ended 30 September 2021

Expenditure

All expenditure is recognised once there is a legal or constructive obligation to that expenditure, it is probable settlement is required and the amount can be measured reliably. All costs are allocated to the applicable expenditure heading that aggregate similar costs to that category. Where costs cannot be directly attributed to particular headings they have been allocated on a basis consistent with the use of resources, with central staff costs allocated on the basis of time spent, and depreciation charges allocated on the portion of the asset's use. Other support costs are allocated based on the spread of staff costs.

Raising funds

These are costs incurred in attracting voluntary income, the management of investments and those incurred in trading activities that raise funds.

Charitable activities

Charitable expenditure comprises those costs incurred by the charity in the delivery of its activities and services for its beneficiaries. It includes both costs that can be allocated directly to such activities and those costs of an indirect nature necessary to support them.

Governance costs

These include the costs attributable to the charity's compliance with constitutional and statutory requirements, including audit, strategic management and trustees's meetings and reimbursed expenses.

Taxation

The charity is considered to pass the tests set out in Paragraph 1 Schedule 6 of the Finance Act 2010 and therefore it meets the definition of a charitable company for UK corporation tax purposes. Accordingly, the charity is potentially exempt from taxation in respect of income or capital gains received within categories covered by Chapter 3 Part 11 of the Corporation Tax Act 2010 or Section 256 of the Taxation of Chargeable Gains Act 1992, to the extent that such income or gains are applied exclusively to charitable purposes.

Tangible fixed assets

Individual fixed assets costing £100.00 or more are initially recorded at cost, less any subsequent accumulated depreciation and subsequent accumulated impairment losses.

Depreciation and amortisation

Depreciation is provided on tangible fixed assets so as to write off the cost or valuation, less any estimated residual value, over their expected useful economic life.

Trade debtors

Trade debtors are amounts due from customers for merchandise sold or services performed in the ordinary course of business.

Trade debtors are recognised initially at the transaction price. They are subsequently measured at amortised cost using the effective interest method, less provision for impairment. A provision for the impairment of trade debtors is established when there is objective evidence that the charity will not be able to collect all amounts due according to the original terms of the receivables.

Cash and cash equivalents

Cash and cash equivalents comprise cash on hand and call deposits, and other short-term highly liquid investments that are readily convertible to a known amount of cash and are subject to an insignificant risk of change in value.

Reach Community Projects (CIO)

Notes to the Financial Statements for the Year Ended 30 September 2021

Trade creditors

Trade creditors are obligations to pay for goods or services that have been acquired in the ordinary course of business from suppliers. Accounts payable are classified as current liabilities if they do not have an unconditional right, at the end of the reporting period, to defer settlement of the creditor for at least twelve months after the reporting date. If there is an unconditional right to defer settlement for at least twelve months after the reporting date, they are presented as non-current liabilities.

Borrowings

Interest-bearing borrowings are initially recorded at fair value, net of transaction costs. Interest-bearing borrowings are subsequently carried at amortised cost, with the difference between the proceeds, net of transaction costs, and the amount due on redemption being recognised as a charge to the Statement of Financial Activities over the period of the relevant borrowing.

Interest expense is recognised on the basis of the effective interest method and is included in interest payable and similar charges.

Borrowings are classified as current liabilities unless the charity has an unconditional right to defer settlement of the liability for at least twelve months after the reporting date.

Fund structure

Unrestricted income funds are general funds that are available for use at the trustees's discretion in furtherance of the objectives of the charity.

Restricted income funds are those donated for use in a particular area or for specific purposes, the use of which is restricted to that area or purpose.

Reach Community Projects (CIO)

Notes to the Financial Statements for the Year Ended 30 September 2021

2 Income from donations and legacies

	Restricted funds £	Total 2021 £	Total 2020 £
Donations and legacies;			
Donations from individuals	38,854	38,854	26,826
Donations and legacies	29,567	29,567	49,978
Gift aid reclaimed	-	-	2,000
Grants, including capital grants;			
Government/community funding	-	-	215,259
Grants from other charities	16,112	16,112	20,245
Regular giving and capital donations	37,319	37,319	23,067
	<u>121,852</u>	<u>121,852</u>	<u>337,375</u>

3 Investment income

	Restricted funds £	Total 2021 £	Total 2020 £
Interest receivable and similar income;			
Interest receivable on bank deposits	<u>1</u>	<u>1</u>	<u>3</u>

4 Analysis of governance and support costs

Governance costs

	Unrestricted funds General £	Total 2021 £	Total 2020 £
Independent examiner fees			
Examination of the financial statements	600	600	600
	<u>600</u>	<u>600</u>	<u>600</u>

5 Trustees remuneration and expenses

No trustees, nor any persons connected with them, have received any remuneration from the charity during the year.

No trustees have received any reimbursed expenses from the charity during the year.

Reach Community Projects (CIO)

Notes to the Financial Statements for the Year Ended 30 September 2021

6 Staff costs

The aggregate payroll costs were as follows:

	2021 £	2020 £
Staff costs during the year were:		
Wages and salaries	179,637	148,221
Social security costs	8,164	6,116
Pension costs	5,003	4,233
Other staff costs	5,146	4,074
	<u>197,950</u>	<u>162,644</u>

11 (2020 - 8) of the above employees participated in the Defined Contribution Pension Schemes.

Contributions to the employee pension schemes for the year totalled £5,003 (2020 - £4,233).

No employee received emoluments of more than £60,000 during the year.

7 Independent examiner's remuneration

	2021 £	2020 £
Examination of the financial statements	<u>600</u>	<u>600</u>

Reach Community Projects (CIO)

Notes to the Financial Statements for the Year Ended 30 September 2021

8 Taxation

The charity is a registered charity and is therefore exempt from taxation.

9 Tangible fixed assets

	Furniture and equipment	Total
	£	£
Cost		
At 1 October 2020	22,699	22,699
Additions	3,517	3,517
At 30 September 2021	26,216	26,216
Depreciation		
At 1 October 2020	22,699	22,699
Charge for the year	102	102
At 30 September 2021	22,801	22,801
Net book value		
At 30 September 2021	3,415	3,415
At 30 September 2020	-	-

10 Debtors

	2021	2020
	£	£
Prepayments	-	376
Other debtors	4,034	5,997
	4,034	6,373

Reach Community Projects (CIO)

Notes to the Financial Statements for the Year Ended 30 September 2021

11 Creditors: amounts falling due within one year

	2021 £	2020 £
Trade creditors	4,538	5,365
Other taxation and social security	4,829	1,983
Other creditors	-	834
Accruals	600	1,200
	9,967	9,382

12 Funds

	Balance at 1 October 2020 £	Incoming resources £	Resources expended £	Transfers £	Balance at 30 September 2021 £
Unrestricted funds					
General	69,260	85,360	(49,916)	(28,484)	76,220
Other unrestricted funds	(12,363)	-	-	12,363	-
Total unrestricted funds	56,897	85,360	(49,916)	(16,121)	76,220
Restricted funds	77,623	311,033	(302,699)	16,121	102,078
Total funds	134,520	396,393	(352,615)	-	178,298
	Balance at 1 October 2020 £	Incoming resources £	Resources expended £	Transfers £	Balance at 30 September 2021 £
Unrestricted funds					
<i>General</i>					
Community	986	-	-	(986)	-
Food Bank	(30,223)	13,260	(997)	17,960	-
Surviving Winter	8,515	-	-	(8,515)	-
RMA	(60,167)	-	(3,259)	63,426	-
Reach	140,478	72,100	(45,251)	(99,509)	67,818
Social Enterprise	9,671	-	(409)	(860)	8,402
	69,260	85,360	(49,916)	(28,484)	76,220

Reach Community Projects (CIO)

Notes to the Financial Statements for the Year Ended 30 September 2021

	Balance at 1 October 2020 £	Incoming resources £	Resources expended £	Transfers £	Balance at 30 September 2021 £
Other unrestricted funds					
General	1,687	-	-	(1,687)	-
HAC	810	-	-	(810)	-
Furniture	(14,860)	-	-	14,860	-
	<u>(12,363)</u>	<u>-</u>	<u>-</u>	<u>12,363</u>	<u>-</u>
Total unrestricted funds	<u>56,897</u>	<u>85,360</u>	<u>(49,916)</u>	<u>(16,121)</u>	<u>76,220</u>
Restricted funds					
Foodbank	11,721	82,719	(65,745)	-	28,695
Social Enterprise	4,680	13,892	(19,432)	860	-
Reach into the Community	61,222	104,842	(95,941)	-	70,123
Client Aid	-	25,950	(22,690)	-	3,260
RMA/RiTC	-	83,630	(98,891)	15,261	-
	<u>77,623</u>	<u>311,033</u>	<u>(302,699)</u>	<u>16,121</u>	<u>102,078</u>
Total funds	<u>134,520</u>	<u>396,393</u>	<u>(352,615)</u>	<u>-</u>	<u>178,298</u>

13 Analysis of net assets between funds

	Restricted funds £	Total funds £
Tangible fixed assets	3,415	3,415
Current assets	184,850	184,850
Current liabilities	(9,967)	(9,967)
Total net assets	<u>178,298</u>	<u>178,298</u>

REACH COMMUNITY PROJECTS

England & Wales - Charity number 1169108

Accounts

Charity registration number: 1169108

Reach Community Projects (CIO)

Annual Report and Financial Statements
for the Year Ended 30 September 2020

Reach Community Projects (CIO)

Contents

Reference and Administrative Details	1
Trustees' Report	2 to 5
Statement of Trustees' Responsibilities	6
Independent Examiner's Report	7
Statement of Financial Activities	8
Balance Sheet	9
Notes to the Financial Statements	10 to 17

Reach Community Projects (CIO)

Reference and Administrative Details

Chairman	Roy Graham
Trustees	Roy Graham Alison Chorley Gavin Rowden David Howell Claire Darracott
Senior Management Team	Henry Wilson MBE Ann Allen Annetta Record Sandra Mann
Registered Office	Room 1 Wisdom Facilities Centre 42 Hollands Road Haverhill Suffolk CB9 8SA
Charity Registration Number	1169108
Independent Examiner	Burdett King Accountancy Limited 8 The Hamiltons Newmarket Suffolk CB8 0NF

Reach Community Projects (CIO)

Trustees' Report

The trustees present the annual report together with the financial statements of the charity for the year ended 30 September 2020.

Trustees

Roy Graham

Alison Chorley

Gavin Rowden

David Howell

Claire Darracott

Objectives and activities

Haverhill is an area of great need, characterised by high levels of social deprivation, debt and low income. At REACH we believe that everyone deserves to live their lives to the full. However, poverty has a devastating effect on individual and family life. Debt, low income and homelessness can lead to mental health problems, relationship breakdown, low aspiration, marginalisation, poor health and low self-esteem.

The purpose of REACH is to support individuals/families in financial crisis in and around Haverhill, restoring people's dignity and reviving their hope.

To assist us with our mission we run a number of projects and activities aimed at uncovering and resolving the root issues that our clients are experiencing:

- Resource Centre – A drop-in centre and access point for all REACH resources, open weekdays, providing a warm welcome and practical help for people struggling with poverty, e.g. housing, benefit, form completion, job searching and so much more
- Money Advice – Free face to face debt advice for people struggling with debt
- Foodbank – Emergency food for unexpected crises
- Starter Packs – Essential bedding and kitchenware when someone literally has nothing
- Client Aid – Financial assistance through donation-based projects such as Acts 435 (www.acts435.org.uk) to provide essential items such as beds, white goods, gas and electricity
- Reach into the Community – All of the REACH resources taken out to those that cannot get in to see us whether it's because of ill health or geographical reasons

Our key values are:

- Generosity – if in doubt, we will always seek to be generous
- Responsibility – This has to be coupled with responsibility, both from the people we are helping and how we distribute the resources entrusted to us
- Believing for better – Our current circumstances do not have to determine our future
- Honesty – Just as we need the people, we are helping to be honest with us, we too need to be honest about what we can realistically do to help them.

Reach Community Projects (CIO)

Trustees' Report

Structure, governance and management

Nature of governing document

As a Charitable Incorporated Organisation (CIO) we have a Board of Trustees which meets on a regular basis. The board oversees and reviews the running of the charity including carefully monitoring our funding and our impact on the local community. New trustees are appointed based on the skills that they will bring to the trustee group.

Public benefit

The trustees confirm that they have complied with the requirements of section 17 of the Charities Act 2011 to have due regard to the public benefit guidance published by the Charity Commission for England and Wales.

Organisational structure

We have 10 members of staff. Staff roles are Projects Director, Office Manager, Client Relationships Manager, 3 Community Outreach Advisers, Projects Administrator, Apprentice Administrator, Foodbank Manager and Social Enterprise E-Commerce Co-ordinator.

We also have around 70 volunteers who help with all aspects of the charity, from administration to Chaperones, to Foodbank, to Resource Centre advisers. We have seen an increase in young people volunteering with us for their Duke of Edinburgh Award. We have a number of volunteers who require additional support, this includes partnerships with Horace Eve house (Mencap), and Broadlands Hall School.

A large proportion of our client-facing work takes place at our Resource Centre. The Resource Centre is a drop-in centre, open from 2-5pm Monday-Friday plus mornings/evenings for appointments. It is our foodbank distribution centre, but we are so much more than a foodbank. We case note our client visits and work with our clients to uncover the reasons for the visit, with the aim of resolving the underlying issues that caused them to come to us. Although there is not time restriction on how long a client can spend with us, we do tend to set up appointments for the more complex cases outside of drop-in hours.

Achievements and performance

A Note from the Projects Director

2019/2020 was a strange year for everybody. We spent six months of it in a global pandemic and as a result had to change our way of working to meet government restrictions, but still be available to the local community who needed us. We stopped all face to face interactions and moved over to virtual / telephone interactions with door step drops to deliver emergency food boxes. As restrictions lifted we were able to move back to a more normal way of working and by July our resource centre was open again, although only by appointment.

During this time those of our volunteers who were over 70, were asked to shield. We recruited new volunteers (many of which had been placed on furlough by their employers), and again as restrictions lifted some of previous volunteers were able to come back to us.

Despite this we were still able to:

- Distribute 807 food boxes that fed 1554 people (554 were children)
- Helped 94 families with entrenched debt, including 20 of these (22%) become free from debt.
- Distributed a total of £2,021 winter fuel poverty grants to 35 families to help them keep their homes warm over the winter period
- Help 43 families living in the rural areas surrounding Haverhill

Reach Community Projects (CIO)

Trustees' Report

Behind each of these statistic is a story of hope. A story like Sally's which can be found at <https://www.reachhaverhill.org.uk/Groups/364278/SallysStory.aspx>

Currently 65% of our income comes from grants and to make us less reliant we have recruited a social enterprise e-commerce co-ordinator who has set up an eBay shop on behalf of Reach. Items are donated to us and then sold on the eBay shop, so all profit made is unrestricted income. As it is an eBay shop it has meant we have been able to continue to trade during the pandemic, unlike many charity shops.

We are indebted to all those who have assisted us in our mission to lift families out of poverty in and around Haverhill. Thank you to our many volunteers who give their time on a regular basis. Thank you too to our partners, these include Trussell Trust, West Suffolk Council, Suffolk Community Foundation, Haverhill Town Council, Cambridgeshire Community Foundation, People's Postcode Lottery, Garfield Weston Foundation and the Henry Smith Charity and of course those that wish to remain anonymous. There are many more individual donors, businesses, community groups, churches and schools who have all contributed to make 2019-20 a very fruitful year. Thank you

Henry Wilson

Projects Director

Plans for future periods

As we prepare this annual report, things are looking positive as further restrictions are lifted with regards to the global pandemic. Our immediate plans focus on helping families who are in financial crisis particularly as a result of the pandemic. We are expecting an increase in the need for debt advice over the next year as people are made redundant or continue to survive on reduced income because of being furloughed. To recognise this continued need, we are planning on increasing our administration team in the middle part of the next financial year and will be looking to increase our outreach team.

We still have uncertainty at the moment as to when our operations will be able to reopen fully, we will adhere to government guidance and return to face to face meetings and home visits as soon as we are able.

We are working with partners to expand our offer geographically, but also set up food distribution points in more accessible areas that are staffed by volunteers from local churches. We will shortly be launching our online debt tools, that will direct people through the maze of debt whilst waiting for an adviser to contact them.

Our longer term ideas include providing more volunteering options especially to young people who are currently unemployed. Looking at providing basic food recipes with our food boxes. Extending our outreach work to more rural villages and areas where there is no current debt advice provision to make it more accessible to people living in these areas. We are also developing our partnerships with other agencies, charities and churches to help strengthen a whole circle of support around an individual or family in need.

Reach Community Projects (CIO)

Trustees' Report

Financial review

Policy on reserves

Reserves are that part of a charity's unrestricted funds that is freely available to spend on any of the charity's purposes. REACH maintains free unrestricted reserves:

- To provide a level of working capital that protects the continuity of its core work
- To provide a level of funding for unexpected opportunities
- To provide cover for risks such as unforeseen expenditure or unanticipated loss of income.

We endeavour to maintain 3 months of staffing and running costs.

The board of trustees will review the above criteria with reference to REACH's strategy and Annual Plan and determine the target level of free reserves to meet these.

The board of trustees will at times designate funds from free reserves for significant project costs or replacement of major assets.

The accounts set out on the following pages reflect the activities of the charity.

The annual report was approved by the trustees of the charity on 10th July 2021 and signed on its behalf by:



.....
Roy Graham
Chairman and Trustee

Reach Community Projects (CIO)

Statement of Trustees' Responsibilities

The trustees (who are also the directors of Reach Community Projects (CIO) for the purposes of company law) are responsible for preparing the trustees' report and the financial statements in accordance with the United Kingdom Accounting Standards (United Kingdom Generally Accepted Accounting Practice) and applicable law and regulations.

Company law requires the trustees to prepare financial statements for each financial year. Under company law the trustees must not approve the financial statements unless they are satisfied that they give a true and fair view of the state of affairs of the charitable company and of its incoming resources and application of resources, including its income and expenditure, for that period. In preparing these financial statements, the trustees are required to:

- select suitable accounting policies and apply them consistently;
- observe the methods and principles in the Charities SORP;
- make judgements and estimates that are reasonable and prudent;
- state whether applicable UK Accounting Standards have been followed, subject to any material departures disclosed and explained in the financial statements; and
- prepare the financial statements on the going concern basis unless it is inappropriate to presume that the charitable company will continue in business.

The trustees are responsible for keeping adequate accounting records that are sufficient to show and explain the charitable company's transactions and disclose with reasonable accuracy at any time the financial position of the charitable company and enable them to ensure that the financial statements comply with the Companies Act 2006. They are also responsible for safeguarding the assets of the charitable company and hence for taking reasonable steps for the prevention and detection of fraud and other irregularities.

Reach Community Projects (CIO)

Independent Examiner's Report to the trustees of Reach Community Projects (CIO)

I report to the charity trustees on my examination of the accounts of the charity for the year ended 30 September 2020 which are set out on pages 8 to 17.

Respective responsibilities of trustees and examiner

As the charity's trustees of Reach Community Projects (CIO) you are responsible for the preparation of the accounts in accordance with the requirements of the Charities Act 2011.

I report in respect of my examination of your charity's accounts as carried out under section 145 of the Charities Act 2011 and in carrying out my examination I have followed the Directions given by the Charity Commission under section 145(5)(b) of the 2011 Act.

Independent examiner's statement

Since Reach Community Projects (CIO)'s gross income exceeded £250,000 your examiner must be a member of a body listed in section 145 of the 2011 Act. I confirm that I am qualified to undertake the examination because I am a member of Chartered Certified Accountant, which is one of the listed bodies.

I have completed my examination. I confirm that no matters have come to my attention in connection with the examination giving me cause to believe:

1. accounting records were not kept in respect of Reach Community Projects (CIO) as required by section 130 of the Charities Act; or
2. the accounts do not accord with those records; or
3. the accounts do not comply with the accounting requirements concerning the form and content of accounts set out in the Charities (Accounts and Reports) Regulations 2008 other than any requirement that the accounts give a 'true and fair view' which is not a matter considered as part of an independent examination.

I have no concerns and have come across no other matters in connection with the examination to which attention should be drawn in this report in order to enable a proper understanding of the accounts to be reached.


.....
Lisa King
Chartered Certified Accountant
Burdett King Accountancy Limited
8 The Hamiltons
Newmarket
Suffolk
CB8 0NF

9 July 2021

Reach Community Projects (CIO)

Statement of Financial Activities for the Year Ended 30 September 2020 (Including Income and Expenditure Account and Statement of Total Recognised Gains and Losses)


	Note	Unrestricted funds £	Restricted funds £	Total 2020 £
Income and Endowments from:				
Donations and legacies	2	185,215	152,160	337,375
Investment income	3	<u>3</u>	<u>-</u>	<u>3</u>
Total income		<u>185,218</u>	<u>152,160</u>	<u>337,378</u>
Expenditure on:				
Raising funds		(33,581)	(8,079)	(41,660)
Charitable activities		53,213	(123,590)	(70,377)
Other expenditure		<u>(155,437)</u>	<u>-</u>	<u>(155,437)</u>
Total expenditure		<u>(135,805)</u>	<u>(131,669)</u>	<u>(267,474)</u>
Net income		<u>49,413</u>	<u>20,491</u>	<u>69,904</u>
Net movement in funds		49,413	20,491	69,904
Reconciliation of funds				
Total funds brought forward		<u>7,487</u>	<u>57,132</u>	<u>64,619</u>
Total funds carried forward	13	<u>56,900</u>	<u>77,623</u>	<u>134,523</u>
	Note	Unrestricted funds £	Restricted funds £	Total 2019 £
Income and Endowments from:				
Donations and legacies	2	136,621	127,081	263,702
Investment income	3	<u>2</u>	<u>-</u>	<u>2</u>
Total income		<u>136,623</u>	<u>127,081</u>	<u>263,704</u>
Expenditure on:				
Raising funds		(19,169)	-	(19,169)
Charitable activities		(18,977)	(59,105)	(78,082)
Other expenditure		<u>(135,706)</u>	<u>(10,844)</u>	<u>(146,550)</u>
Total expenditure		<u>(173,852)</u>	<u>(69,949)</u>	<u>(243,801)</u>
Net (expenditure)/income		<u>(37,229)</u>	<u>57,132</u>	<u>19,903</u>
Net movement in funds		(37,229)	57,132	19,903
Reconciliation of funds				
Total funds brought forward		<u>44,716</u>	<u>-</u>	<u>44,716</u>
Total funds carried forward	13	<u>7,487</u>	<u>57,132</u>	<u>64,619</u>

All of the charity's activities derive from continuing operations during the above two periods.

Reach Community Projects (CIO)
(Registration number: 12345678)
Balance Sheet as at 30 September 2020

	Note	2020 £	2019 £
Fixed assets			
Tangible assets	9	-	1,878
Current assets			
Debtors	10	6,373	6,549
Cash at bank and in hand	11	<u>137,532</u>	<u>64,367</u>
		143,905	70,916
Creditors: Amounts falling due within one year	12	<u>(9,382)</u>	<u>(8,175)</u>
Net current assets		<u>134,523</u>	<u>62,741</u>
Net assets		<u>134,523</u>	<u>64,619</u>
Funds of the charity:			
Restricted income funds			
Restricted funds		77,623	57,132
Unrestricted income funds			
Unrestricted funds		<u>56,900</u>	<u>7,487</u>
Total funds	13	<u>134,523</u>	<u>64,619</u>

The financial statements on pages 8 to 17 were approved by the trustees, and authorised for issue on 10.10.2020 and signed on their behalf by:



 Roy Graham
 Chairman and Trustee

Reach Community Projects (CIO)

Notes to the Financial Statements for the Year Ended 30 September 2020

1 Accounting policies

Summary of significant accounting policies and key accounting estimates

The principal accounting policies applied in the preparation of these financial statements are set out below. These policies have been consistently applied to all the years presented, unless otherwise stated.

Statement of compliance

The financial statements have been prepared in accordance with Accounting and Reporting by Charities: Statement of Recommended Practice applicable to charities preparing their accounts in accordance with the Financial Reporting Standard applicable in the UK and Republic of Ireland (FRS 102) (effective 1 January 2015) - (Charities SORP (FRS 102)), the Financial Reporting Standard applicable in the UK and Republic of Ireland (FRS 102). They also comply with the Companies Act 2006 and Charities Act 2011.

Basis of preparation

Reach Community Projects (CIO) meets the definition of a public benefit entity under FRS 102. Assets and liabilities are initially recognised at historical cost or transaction value unless otherwise stated in the relevant accounting policy notes.

Going concern

The trustees consider that there are no material uncertainties about the charity's ability to continue as a going concern nor any significant areas of uncertainty that affect the carrying value of assets held by the charity.

Income and endowments

All income is recognised once the charity has entitlement to the income, it is probable that the income will be received and the amount of the income receivable can be measured reliably.

Donations and legacies

Donations are recognised when the charity has been notified in writing of both the amount and settlement date. In the event that a donation is subject to conditions that require a level of performance by the charity before the charity is entitled to the funds, the income is deferred and not recognised until either those conditions are fully met, or the fulfilment of those conditions is wholly within the control of the charity and it is probable that these conditions will be fulfilled in the reporting period.

Legacy gifts are recognised on a case by case basis following the grant of probate when the administrator/executor for the estate has communicated in writing both the amount and settlement date. In the event that the gift is in the form of an asset other than cash or a financial asset traded on a recognised stock exchange, recognition is subject to the value of the gift being reliably measurable with a degree of reasonable accuracy and the title to the asset having been transferred to the charity.

Grants receivable

Grants are recognised when the charity has an entitlement to the funds and any conditions linked to the grants have been met. Where performance conditions are attached to the grant and are yet to be met, the income is recognised as a liability and included on the balance sheet as deferred income to be released.

Investment income

Dividends are recognised once the dividend has been declared and notification has been received of the dividend due.

Reach Community Projects (CIO)

Notes to the Financial Statements for the Year Ended 30 September 2020

Expenditure

All expenditure is recognised once there is a legal or constructive obligation to that expenditure, it is probable settlement is required and the amount can be measured reliably. All costs are allocated to the applicable expenditure heading that aggregate similar costs to that category. Where costs cannot be directly attributed to particular headings they have been allocated on a basis consistent with the use of resources, with central staff costs allocated on the basis of time spent, and depreciation charges allocated on the portion of the asset's use. Other support costs are allocated based on the spread of staff costs.

Raising funds

These are costs incurred in attracting voluntary income, the management of investments and those incurred in trading activities that raise funds.

Charitable activities

Charitable expenditure comprises those costs incurred by the charity in the delivery of its activities and services for its beneficiaries. It includes both costs that can be allocated directly to such activities and those costs of an indirect nature necessary to support them.

Support costs

Support costs include central functions and have been allocated to activity cost categories on a basis consistent with the use of resources, for example, allocating property costs by floor areas, or per capita, staff costs by the time spent and other costs by their usage.

Governance costs

These include the costs attributable to the charity's compliance with constitutional and statutory requirements, including audit, strategic management and trustees's meetings and reimbursed expenses.

Taxation

The charity is considered to pass the tests set out in Paragraph 1 Schedule 6 of the Finance Act 2010 and therefore it meets the definition of a charitable company for UK corporation tax purposes. Accordingly, the charity is potentially exempt from taxation in respect of income or capital gains received within categories covered by Chapter 3 Part 11 of the Corporation Tax Act 2010 or Section 256 of the Taxation of Chargeable Gains Act 1992, to the extent that such income or gains are applied exclusively to charitable purposes.

Tangible fixed assets

Individual fixed assets costing £100.00 or more are initially recorded at cost, less any subsequent accumulated depreciation and subsequent accumulated impairment losses.

Depreciation and amortisation

Depreciation is provided on tangible fixed assets so as to write off the cost or valuation, less any estimated residual value, over their expected useful economic life.

Reach Community Projects (CIO)

Notes to the Financial Statements for the Year Ended 30 September 2020

Trade debtors

Trade debtors are amounts due from customers for merchandise sold or services performed in the ordinary course of business.

Trade debtors are recognised initially at the transaction price. They are subsequently measured at amortised cost using the effective interest method, less provision for impairment. A provision for the impairment of trade debtors is established when there is objective evidence that the charity will not be able to collect all amounts due according to the original terms of the receivables.

Cash and cash equivalents

Cash and cash equivalents comprise cash on hand and call deposits, and other short-term highly liquid investments that are readily convertible to a known amount of cash and are subject to an insignificant risk of change in value.

Trade creditors

Trade creditors are obligations to pay for goods or services that have been acquired in the ordinary course of business from suppliers. Accounts payable are classified as current liabilities if they do not have an unconditional right, at the end of the reporting period, to defer settlement of the creditor for at least twelve months after the reporting date. If there is an unconditional right to defer settlement for at least twelve months after the reporting date, they are presented as non-current liabilities.

Borrowings

Interest-bearing borrowings are initially recorded at fair value, net of transaction costs. Interest-bearing borrowings are subsequently carried at amortised cost, with the difference between the proceeds, net of transaction costs, and the amount due on redemption being recognised as a charge to the Statement of Financial Activities over the period of the relevant borrowing.

Interest expense is recognised on the basis of the effective interest method and is included in interest payable and similar charges.

Borrowings are classified as current liabilities unless the charity has an unconditional right to defer settlement of the liability for at least twelve months after the reporting date.

Fund structure

Unrestricted income funds are general funds that are available for use at the trustees's discretion in furtherance of the objectives of the charity.

Restricted income funds are those donated for use in a particular area or for specific purposes, the use of which is restricted to that area or purpose.

Reach Community Projects (CIO)

Notes to the Financial Statements for the Year Ended 30 September 2020

2 Income from donations and legacies

	Unrestricted funds		Total 2020 £	Total 2019 £
	General £	Restricted funds £		
Donations and legacies;				
Donations from individuals	26,826	-	26,826	6,278
Donations and legacies	49,978	-	49,978	20,159
Gift aid reclaimed	2,000	-	2,000	3,535
Grants, including capital grants;				
Government/community funding	72,344	142,915	215,259	197,316
Grants from other charities	11,000	9,245	20,245	18,341
Regular giving and capital donations	23,067	-	23,067	18,073
	<u>185,215</u>	<u>152,160</u>	<u>337,375</u>	<u>263,702</u>

3 Investment income

	Unrestricted funds	Total 2020 £	Total 2019 £
	General £		
Interest receivable and similar income;			
Interest receivable on bank deposits	3	3	2
	<u>3</u>	<u>3</u>	<u>2</u>

4 Analysis of governance and support costs

Governance costs

	Unrestricted funds	Total 2020 £	Total 2019 £
	General £		
Independent examiner fees			
Examination of the financial statements	600	600	600
	<u>600</u>	<u>600</u>	<u>600</u>

Reach Community Projects (CIO)

Notes to the Financial Statements for the Year Ended 30 September 2020

5 Trustees remuneration and expenses

No trustees, nor any persons connected with them, have received any remuneration from the charity during the year.

6 Staff costs

The aggregate payroll costs were as follows:

	2020 £	2019 £
Staff costs during the year were:		
Wages and salaries	141,014	122,994
Social security costs	6,116	5,293
Pension costs	4,233	2,801
Other staff costs	4,074	4,618
	<u>155,437</u>	<u>135,706</u>

8 (2019 - 7) of the above employees participated in the Defined Contribution Pension Schemes.

Contributions to the employee pension schemes for the year totalled £4,233 (2019 - £2,801).

No employee received emoluments of more than £60,000 during the year.

7 Independent examiner's remuneration

	2020 £	2019 £
Examination of the financial statements	<u>600</u>	<u>600</u>

Reach Community Projects (CIO)

Notes to the Financial Statements for the Year Ended 30 September 2020

8 Taxation

The charity is a registered charity and is therefore exempt from taxation.

9 Tangible fixed assets

	Furniture and equipment	Total
	£	£
Cost		
At 1 October 2019	<u>22,699</u>	<u>22,699</u>
At 30 September 2020	<u>22,699</u>	<u>22,699</u>
Depreciation		
At 1 October 2019	20,821	20,821
Charge for the year	<u>1,878</u>	<u>1,878</u>
At 30 September 2020	<u>22,699</u>	<u>22,699</u>
Net book value		
At 30 September 2020	<u>-</u>	<u>-</u>
At 30 September 2019	<u>1,878</u>	<u>1,878</u>

10 Debtors

	2020	2019
	£	£
Prepayments	376	2,552
Other debtors	<u>5,997</u>	<u>3,997</u>
	<u>6,373</u>	<u>6,549</u>

11 Cash and cash equivalents

	2020	2019
	£	£
Cash on hand	415	138
Cash at bank	<u>137,117</u>	<u>64,229</u>
	<u>137,532</u>	<u>64,367</u>

Reach Community Projects (CIO)

Notes to the Financial Statements for the Year Ended 30 September 2020

12 Creditors: amounts falling due within one year

	2020 £	2019 £
Trade creditors	5,365	4,778
Other taxation and social security	1,983	1,885
Other creditors	834	912
Accruals	1,200	600
	9,382	8,175

13 Funds

	Balance at 1 October 2019 £	Incoming resources £	Resources expended £	Balance at 30 September 2020 £
Unrestricted funds				
General	19,850	185,218	(135,805)	69,263
Other unrestricted funds	(12,363)	-	-	(12,363)
Total unrestricted funds	7,487	185,218	(135,805)	56,900
Restricted funds	57,132	152,160	(131,669)	77,623
Total funds	64,619	337,378	(267,474)	134,523
	Balance at 1 October 2019 £	Incoming resources £	Resources expended £	Balance at 30 September 2020 £
Unrestricted funds				
<i>General</i>				
Community	986	-	-	986
Food Bank	(17,742)	9,816	(22,297)	(30,223)
Surviving Winter	(1,800)	11,500	(1,185)	8,515
RMA	9,677	6,485	(76,329)	(60,167)
Reach	28,729	145,092	(33,343)	140,478
Social Enterprise	-	12,322	(2,651)	9,671
	19,850	185,215	(135,805)	69,260
<i>Other unrestricted funds</i>				
General	1,687	-	-	1,687
HAC	810	-	-	810
Furniture	(14,860)	-	-	(14,860)
	(12,363)	-	-	(12,363)

Reach Community Projects (CIO)

Notes to the Financial Statements for the Year Ended 30 September 2020

	Balance at 1 October 2019 £	Incoming resources £	Resources expended £	Balance at 30 September 2020 £
Total unrestricted funds	<u>7,487</u>	<u>185,215</u>	<u>(135,805)</u>	<u>56,897</u>
Restricted funds				
Foodbank	17,500	35,445	(41,224)	11,721
Social Enterprise	4,815	9,360	(9,495)	4,680
Reach into the Community	38,775	107,355	(84,908)	61,222
Resource Centre Refurbishment	<u>(3,958)</u>	<u>-</u>	<u>3,958</u>	<u>-</u>
	<u>57,132</u>	<u>152,160</u>	<u>(131,669)</u>	<u>77,623</u>
Total funds	<u>64,619</u>	<u>337,375</u>	<u>(267,474)</u>	<u>134,520</u>

14 Analysis of net assets between funds

	Unrestricted funds General £	Total funds £
Current assets	(375,873)	(375,873)
Current liabilities	<u>(4,664)</u>	<u>(4,664)</u>
Total net assets	<u>(380,537)</u>	<u>(380,537)</u>