

ST MARYS NURSERY, CAMBERLEY

England & Wales · Charity number 1168824

Details

Status Registered

Legal form CIO

Registered 2016-08-18

Register [View on the Charity Commission register](#)

Contact

Address The Pavilion
Watchetts Recreation Ground
Park Road
Camberley
GU15 2SR

Phone 01276581309

Email office@stmarysnurserycamberley.co.uk

Website www.stmarysnurserycamberley.co.uk

Activities

Objects: TO ENHANCE THE DEVELOPMENT AND EDUCATION OF CHILDREN UNDER THE STATUTORY SCHOOL AGE BY ENCOURAGING PARENTS TO UNDERSTAND AND PROVIDE FOR THE NEEDS OF THEIR CHILDREN THROUGH COMMUNITY GROUPS

Activities: Pre School Education

Classification

- **How:** Provides Services, Provides Advocacy/advice/information
- **What:** Education/training
- **Who:** Children/young People

Geography

- Surrey

Finances

Period end	Income	Expenditure	Assets	Employees
2025-08-31	£244,919	£241,452	-	-
2024-08-31	£244,919	£241,452	-	-
2023-08-31	£216,404	£209,426	-	-
2022-08-31	£215,468	£203,732	-	-
2021-08-31	£209,912	£206,163	-	-

Trustees

Name	Role	Appointed
Rev Andrew John Knowles	Chair	2018-05-21
Amy Jane George		2026-03-10
Joanna Lucy Atkinson		2018-11-19
Rev Sue Duplock		2023-05-15
Susan Patrica Dunn		2018-05-21

ST MARYS NURSERY, CAMBERLEY

England & Wales - Charity number 1168824

Accounts



St Mary's Nursery, Camberley Trustees Annual Report and Financial Statements for the year end 31st August 2025

Chair:
Revd Andrew Knowles

Nursery Manager:
Sue Gauntlett

Independent Examiner:
Radford and Sergeant Ltd

Table of contents:

Administrative Information	2
Trustees:	
Chair, Vice Chair, Treasurer & Trustees	
Nursery Leadership Team	
Consultants to the Nursery	
Nursery Structure, Management and Governance	3
Trustees and Teams	
Operations Team	
People Team, Building Team, Finance Team	
Nursery Leadership Team	
St Mary's as an employer	
Objectives, Mission, Vision, Ethos	5
As defined by Ofsted and The Early Years Statutory Framework	
Achievements and Performance	6
Leadership	
Safeguarding	
Training	
Supporting our families	
Financial review	8
Income	
Expenditure	
Net Result	
Reserves Policy	
Statement of Financial Activities: 1st September 2024 to 31st August 2025	
Balance Sheet at 31st August 2025	9
Notes to the Financial Statements for the year ended 31 st August 2025	
Accounting Policies	
Income Resources	
Resources expended	
Debtors	
Creditors	
Fund Details	
Independent Examiner's report of St Mary's Nursery, Camberley	
for the year ended 31st August 2025	16
Independent Examiner's Statement	

Administrative Information

St Mary's Nursery is registered with Ofsted, registered number EY556342 and is a member of the Early Years Alliance.

Correspondence address:

St Mary's Nursery, Camberley, The Pavillion, Watchetts Recreation Ground, Park Road, Camberley, Surrey, GU15 2SR.

St Mary's Nursery, Camberley is a Charitable Incorporated Organisation with the Charity Commission, Charity Number 1168824.

We are an Ofsted Outstanding, community-based charity nursery in Camberley with a strong Christian foundation. Our ethos is rooted in Christian values which underpin all aspects of our work with children and families.

Our Trustees provide strategic leadership and governance, helping to ensure the nursery remains financially sustainable, compliant, and focused on delivering exceptional early years education and care.

All trustees give their time voluntarily and do not receive any remuneration or benefits. The Trustees meet termly. The senior leadership team attend the meetings.

The Trustee members at the time of this report are:

Chairperson:	Reverend Andrew Knowles
Vice chairperson:	Mr Paul Amphlett
Treasurer:	Vacant (interim: Andrew Knowles)

Trustees:	Mrs Sue Dunn
	Miss Jo Atkinson
	Reverend Sue Duplock

Nursery Leadership Team members:

Nursery Manager:	Mrs Sue Gauntlett (Designated Safeguarding Lead & SENCO)
Deputy Manager:	Mrs Penny Fairminer (Deputy Designated Safeguarding Lead)
Lead Practitioner:	Miss Paula Fosh (Lead Practitioner, DDSL, SEW Lead)

Consultants to the Nursery:

Mrs Karen Liddington (HR Consultant)
Mr John Bradstreet (Health and Safety Consultant)

Nursery Structure, Management and Governance

The Trustees of St Mary's Nursery includes: The Chair, Vice Chair, Treasurer and three other members.

The Nursery Leadership Team includes: The Nursery Manager, Deputy Manager and Lead Practitioner.

The Trustees are responsible for making decisions on all matters of general concern and importance to the Nursery including deciding on how the excess funds are to be spent. New members receive initial training and induction.

The Trustees and Leadership Team meet termly the Leadership Team presents a report at the meetings.

Operations Team

The Nursery Operations Team carries out the work of the Trustees between meetings.

- Andrew Knowles (Chair)
- Sue Gauntlett (Nursery Manager)
- Penny Fairminer (Deputy Manager)
- Esther Westwood (Finance Administrator)

People's Team

Overseeing the resource of people, those employed by St Mary's Nursery or volunteering for St Mary's Nursery, to ensure that we support them and fulfil our legal obligations.

- Paul Amphlett (Vice Chair)
- Sue Dunn (Trustee)
- Sue Gauntlett (Nursery Manager)
- Paula Fosh (Lead Practitioner)
- Advisers: HR Consultant, Surrey Early Years, Data Protection Officer.

Building Team

Overseeing the resource of our building to ensure it is appropriately cared for and safe to deliver the provision of St Mary's Nursery.

- Jo Atkinson (Trustee)
- Sue Gauntlett (Nursery Manager)
- Julie Gatenby (Deputy SENCO)

Finance Team

Overseeing the resource of our finances to ensure they are appropriately managed and support the provision of St Mary's Nursery.

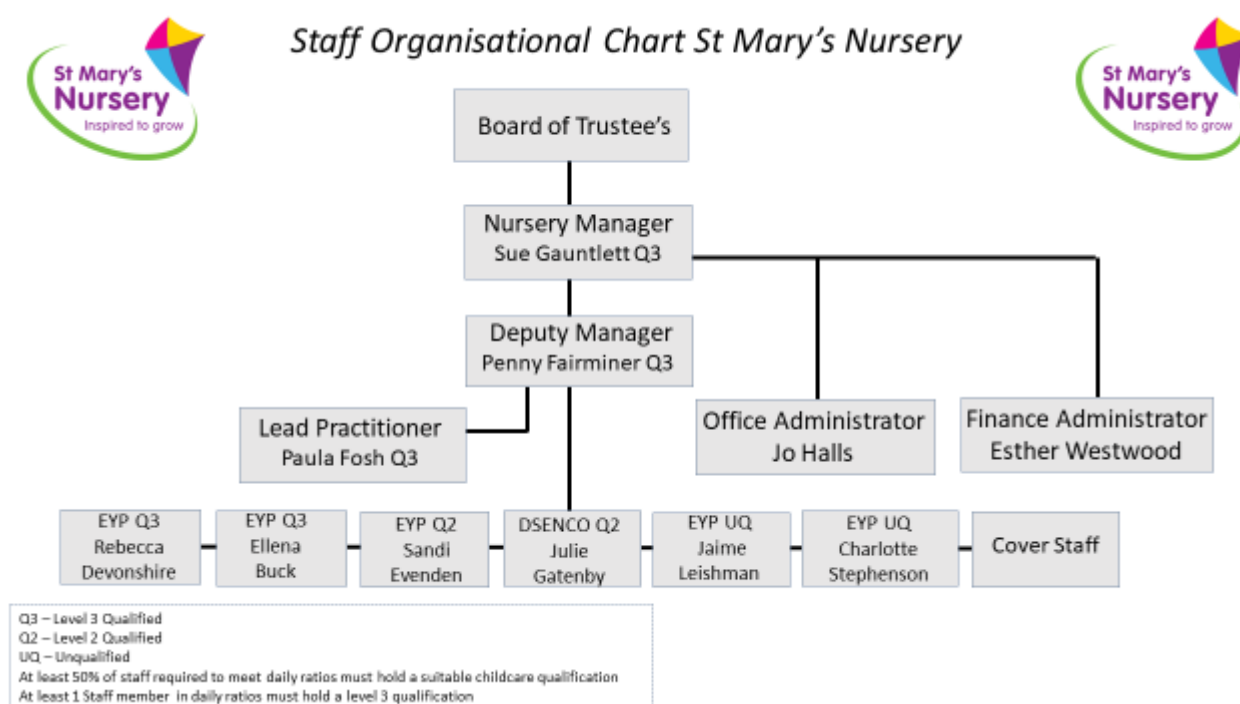
- Treasurer: Revd Andrew Knowles (interim treasurer due to vacancy)
- Paul Amphlett (Vice Chair)
- Sue Gauntlett (Nursery Manager)
- Esther Westwood (Finance Administrator)

Nursery Leadership Team

The Nursery Leadership Team oversees the provision at St Mary's Nursery, and it is accountable to the Trustees.

- Sue Gauntlett (Nursery Manager, DSL & SENCO)
- Penny Fairminer (Deputy Manager, DSL)
- Paula Fosh (Lead Practitioner, DDSL, SEW Lead)

The Nursery Leadership Team oversees St Mary's Nursery and offers leadership and support.



St Mary's Nursery as an employer:

Nursery Manager, DSL & SENCO: Mrs Sue Gauntlett (40 hours per week)

Deputy Manager, DSL: Mrs Penny Fairminer (40 hours per week)

Lead Practitioner, DDSL: Miss Paula Fosh (32.5 hours per week)

Deputy SENCO: Mrs Julie Gatenby (32.5 hours per week)

Office Administrator: Mrs Jo Halls (20 hours per week)

Finance Administrator: Mrs Esther Westwood (5 hours per week)

Ealy Years Practitioners: (Various hours per week)

The Nursery values its staff and is dedicated to investing in continuous personal development. The Nursery is grateful to the commitment of its staff and its trustees. This year has been the most successful for the staff team when we received an Outstanding from Ofsted. We are thankful for their commitment to St Mary's and we are indebted for their dedication.

The Nursery oversees those who volunteer.

Like most charities, St Mary's Nursery has seen a change in its volunteering, some have stepped down, and some are re-engaging. We are grateful for all who have given their time, and work for the benefit of us all.

Objectives

Our Mission (Intent) is to inspire children to grow, flourish and live life in all its fullness. (John10:10)



Our Ethos (Implementation) we provide an enabling environment by creating opportunities to explore, problem solve, risk take and become deeply engaged in play. We follow children's interests and extend their learning using open-ended questions and resources in the moment.

Our Vision (Impact) Children leave us ready for their journey into school, having reached their full potential to take them into the wider world.

We follow the guidance of the Early Years Statutory Framework and Ofsted Requirements.

Our curriculum is based on the EYFS learning and development requirements. Our current Curriculum Focus since the pandemic and due to our high number of EAL children is PSED particularly children's Wellbeing and also C&L, we have introduced the Thrive Approach and Early Talk Boost programme to support this.

We have also adopted a specialist pedagogical approach, The Curiosity Approach, which is based on child-led learning.

It is our INTENT to create children who are thinkers and doers who make their own choices, building confidence, critical thinking and problem-solving skills.





How we implement our curriculum

Our environment covers all 7 areas of learning, with open ended natural resources, we allow children to be the leaders of their own learning. Our practitioners use their in-depth knowledge of their key children, with the 3 I's at the forefront of their minds when setting up invitations to play focusing on what children need to know next.

Through the use of open-ended questions and teachable moments, practitioners extend children's learning 'in the moment'.

How do we know the impact of our curriculum?

Before children join the setting, we gather information from the parents which gives us a holistic view of the child before they start.

Through consistent progress and development updates with parents, we are able to have an understanding of what children 'know and can do', ensuring they reach their own individual full potential for the next stage in their learning journey.

Achievements and Performance

review of 2024/2025

At every Trustee meeting, the following three papers are presented:

- Paper A: a record of decisions made and how we are progressing with any action required.
- Paper B: updates from the Leadership Team.
- Paper C: updates from subgroups of the Nursery.

Leadership

Installation of an outdoor wooden shelter providing both shade from the sun and protection from the rain and a new large mud kitchen. These were funded by Deprivation funding.

Resurfacing of the tunnel and hills with new Astro turf as previous surface had become unsafe. Funded by Deprivation Funding.

In the summer we had a volunteer group from Surrey Choices along with horticulturalists attend for 2 days to review and maintain our allotment area.

Purchase of a greenhouse for the allotment area and installation of a slabbed base. This will support sustainability as part of our action plan enabling the children to grow and harvest their own produce all year round. Funded by Deprivation Funding.

We reconfigured the indoor two-year-old area to accommodate the increased number of places we can offer from 8 per session to 12, this is in response to the demand created by the government free funding for two year olds from September 2024.

We have a high level of children with special educational needs some with Educational Health Care Plans. To support them to transition to school, our SENCO team attended stay and play sessions at their new school.

Surrey Early Years have recommended the nursery to other providers to visit.

Safeguarding

We have three Designated Safeguarding Leads. DSL's attend refresher training every two years.

Early Years completed the Section 11 of The Children's Act safeguarding audit, for early years settings annually.

Ofsted's comments with regards to the nursery's safeguarding:

The arrangements for safeguarding are effective.

There is an open and positive culture around safeguarding that puts children's interests first.

Training

The leadership team are all Designated Safeguarding Lead's.

All the team have updated their mandatory training as part of our best practice approach.

All Trustees have completed Working Together to Safeguard Children training.

All practitioners are Paediatric First Aid Trained.

All staff hold Level 2 Food Hygiene certificates.

Managers attend Surrey Early Years Network events.

Ofsted's comments on training:

Managers and staff enjoy exceptional training opportunities.

Supporting our children and their families

The nursery provides the government food vouchers for our most vulnerable and disadvantaged families.

The nursery received very generous harvest donations for the Besom food bank. This is our chosen charity for this year.

Financial Review

(Figures in brackets denote amounts for the previous year)

Income:

Total incoming resources for 2024/25 were £276,275 (£244,919) of which £25,375 was for Restricted purposes only. The balance of £250,899 was Unrestricted income for general purposes.

At the end of the year £22,515 (£21,964) was held as Restricted funds for Early Intervention Pupil Premium and Deprivation.

93% of our income comes from Surrey County Council, 5% from Session fees paid by parents and the balance is made up of deposits for future nursery places and bank interest earned.

Expenditure:

73% of our expenditure is on salaries as we believe that providing high quality child care practitioners is our priority.

The rent on our fantastic setting amounts to 7% of our total spending, with a further 4% spent on building and garden maintenance, insurance and cleaning.

Net result:

At the end of the financial year we had a surplus of income over expenditure of £11,011 (£3,467)

Reserves:

It is our policy to maintain a reserve equal to at least 3 months running costs.

St Mary's Nursery Camberley

**STATEMENT OF FINANCIAL ACTIVITIES (INCLUDING INCOME AND EXPENDITURE
ACCOUNT) FOR THE PERIOD FROM
1 SEPTEMBER 2023 TO 31 AUGUST 2024**

		Unrestricted Funds	Restricted Funds	Total Funds	Total Funds
		2024	2024	2024	2023
		£	£	£	£
Income from:	Notes				
Donations and legacies	3&4	170,180.31	51,963.69	222,144.00	189,420.98
Charitable activities	3	19,453.65		19,453.65	25,901.95
Other trading activities					
Investments					
Other income	3	3,321.50		3,321.50	1,080.81
Total Income		192,955.46	51,963.69	244,919.15	216,403.74
Expenditure on:		£			
Raising funds					
Charitable activities	5	192,706.56	48,745.22	241,451.78	209,425.67
Total Expenditure		192,706.56	48,745.22	241,451.78	209,425.67
Net income		248.90	3,218.47	3,467.37	6,978.07
Transfer between funds		-	-	-	-
Other recognised gains and losses					
Net Movement in Funds		-	-	-	-
Reconciliation of funds					
Total funds brought forward		111,349.75	19,901.57	131,251.32	124,273.25
Total funds carried forward		111,598.65	23,120.04	134,718.69	131,251.32

St Mary's Nursery Camberley

NOTES TO THE FINANCIAL STATEMENTS

1 Accounting Policies

The principal accounting policies adopted, judgements and key sources of estimation uncertainty in the preparation of the financial statements are as follows:

a) Basis of preparation

The financial statements have been prepared in accordance with Accounting and Reporting by Charities: Statement of Recommended Practice applicable to charities preparing their accounts in accordance with the Financial Reporting Standard applicable in the UK and Republic of Ireland (FRS 102) - (Charities SORP (FRS 102) and the Financial Reporting Standard applicable in the UK and Republic of Ireland (FRS 102).

St Mary's Nursery Camberley meets the definition of a public benefit entity under FRS 102. Assets and liabilities are initially recognised at historical cost or transaction value unless otherwise stated in the relevant accounting policy note(s).

b) Preparation of the accounts on a going concern basis

The accounts are prepared on a Going Concern basis.

c) Income

Income is recognised when the charity has entitlement to the funds, any performance conditions attached to the item(s) of income have been met, it is probable that the income will be received and the amount can be measured reliably.

Income from government and other grants, whether 'capital' grants or 'revenue' grants, is recognised when the charity has entitlement to the funds, any performance conditions attached to the grants have been met, it is probable that the income will be received and the amount can be measured reliably and is not deferred.

d) Tangible fixed assets

Tangible fixed assets are stated at their historic cost price less accumulated depreciation. Historical cost includes expenditure that is directly attributable to bringing the asset to the location and condition necessary for use. The assets' residual values, useful lives and depreciation methods are reviewed if there is an indication of significant change since the last reporting date. Depreciation is provided at the following annual rates in order to write off each asset over its estimated useful life:

Office equipment - 33% straight line

e) Fund accounting

Unrestricted funds are available to spend on activities that further any of the purposes of the charity. Restricted funds are donations which the donor has specified are to be solely used for particular areas of the Trust's work or for specific research projects being undertaken by the Trust. As at 31 August 2024 the Trust's funds consisted of £111,598 of unrestricted funds (22/23: £111,349) and £23,120 of restricted funds

(22/23: £19,901).

f) Expenditure and irrecoverable VAT

Expenditure is recognised once there is a legal or constructive obligation to make a payment to a third party, it is probable that settlement will be required and the amount of the obligation can be measured reliably.

Expenditure is classified under the following activity headings:

- Expenditure on raising funds
- Expenditure on charitable activities
- Irrecoverable VAT is charged as a cost against the activity for which the expenditure was incurred.

g) Cash at bank and in hand

Cash at bank and cash in hand includes cash and short term highly liquid investments with a short maturity of three months or less from the date of acquisition or opening of the deposit or similar account. Cash in transit is included.

h) Costs relating to the activities

All costs relate to the single charitable activity of children's nursery services.

2 Legal status of the Trust

The Trust is a Charitable Incorporated Organisation and has no share capital.

3 Income

		2024		2023
Donations and legacies				
Grants provided by the government		222,144.00		189,420.98
Sundry donations		1,460.00		385.00
		223,604.00		189,805.98
Charitable activities				
Session fees		19,453.65		25,901.95
		19,453.65		25,901.95
Investments				
Bank interest received		1,079.10		695.81
		1,079.10		695.81
Other trading activities				
Sundry income		782.40		-
Total Income		244,919.15		216,403.74

4 Restricted Funds

	2024
Surrey Winter Food Grant	
Balance at 1st September 2023	
Funding in the year	2,580.00
Less: Expended in 2023/24	2,580.00
Remaining	-
Pupil Premium	
Balance at 1st September 2023	267.46
Funding in the year	2,576.04
Less: Expended in 2023/24	1,229.96
Remaining	1,613.54
Deprivation Funding	
Balance at 1st September 2023	17,364.47
Funding in the year	11,402.73
Less: Expended in 2023/24	8,296.77
Remaining	20,470.43
Dissability Funding	
Balance at 1st September 2023	1,059.13
Funding in the year	858.92
Less: Expended in 2023/24	881.98
Remaining	1,036.07
Early Intervention/Discretionary Funding	
Balance at 1st September 2023	-
Funding in the year	34,546.00
Less: Expended in 2023/24	34,546.00
Remaining	-
Fixed Assets	
Balance as at 1st September 2023- allocated to RF	1,210.51
Depreciation in the year- allocated to RF	1,210.51
Remaining	-
Overall - all Restricted funds	
Balance at 1st September 2023	19,901.57
Funding in the year	51,963.69
Less: Expended in 2023/24	48,745.22
Remaining	23,120.04

6 Tangible fixed assets

	31/08/2024
	Office equipment
COST	
At 1 September 2023	8,995.04
Additions	
Disposals	
At 31 August 2024	<u>8,995.04</u>
DEPRECIATION	
At 1 September 2023	4,496.63
Charge for the year	1,799.01
At 31 August 2024	<u>6,295.64</u>
NET BOOK VALUE	
At 31 August 2024	<u>2,699.40</u>
At 31 August 2023	<u>4,498.41</u>

7 Debtors

	2024	2023
Rent deposit	-	-
Trade Debtors	157.50	2,469.38
Prepayments	1,570.80	1,082.47
	<u>1,728.30</u>	<u>3,551.85</u>

8 Creditors

	2024	2023
Funding fees in advance	1,260.00	-
Accruals	756.00	720.00
Trade Creditors	458.25	119.70
PAYE/ Pension	2,416.38	3,055.82
Wages payable	-	-
	<u>4,890.63</u>	<u>3,895.52</u>

9 Independent examiner's fee

	2024	2023
Independent exam	280.00	270.00
Accounts	476.00	450.00
	<u>756.00</u>	<u>720.00</u>

10 Related Parties

There were no related party transactions in the year.

Independent Examiner's Report to the Trustees of St Mary's Nursery, Camberley

(Registered Charity no. 1168824)

I report on the accounts of St Mary's Nursery for the year ended 31 August 2024 which are set out on the attached pages in respect of an examination carried out under section 145 of the Charities Act 2011 ("the Act").

Respective responsibilities of the Trustees and the examiner

The charity's trustees consider that an audit is not required for this year under section 144 (2) of the Act and that an independent examination is needed.

It is my responsibility to :

- Examine the accounts under section 145 of the Act;
- Follow the procedures laid down in the General Directions given by the Charity Commissioners under section 145(5) (b) of the Act; and
- State whether particular matters have come to my attention.

Basis of independent examiner's statement

My examination was carried out in accordance with the General Directions given by the Charity Commissioners. An examination includes a review of the accounting records kept by the charity and a comparison of the accounts presented with those records. It also includes consideration of any unusual items or disclosures in the accounts and seeking explanations from you as a trustees concerning any such matters. The procedures undertaken do not provide all the evidence that would be required in an audit and consequently we do not express an audit opinion on the view given by the accounts.

Independent examiner's statement

I have completed my examination. I confirm that no material matters have come to my attention in connection with the examination giving me cause to believe that in any material respect:

1. Accounting records were not kept in respect of the charity as required by section 130 of the Act; or
2. The accounts do not accord with those records; or
3. The accounts do not comply with the applicable requirements concerning the form and content of accounts set out in the Charities (Accounts and Reports) Regulations.

I have no concerns and have come across no other matters in connection with the examination to which attention should be drawn in this report in order to enable a proper understanding of the accounts to be reached.

Kim Swain MA (Oxon) FCA

Date:

Radford & Sergeant Limited
Building 3
Watchmoor Park
Camberley
Surrey
GU15 3YL

ST MARYS NURSERY, CAMBERLEY

England & Wales - Charity number 1168824

Accounts



St Mary's Nursery, Camberley

Trustees Annual Report and Financial Statements for the year end
31st August 2024

Chair:
Revd Andrew Knowles

Manager:
Mrs Sue Gauntlett

Independent Examiner:
Radford and Sergeant Ltd

Table of contents:

Administrative Information.....	2
Trustees:	
Chair, Vice Chair, Treasurer & Trustees	
Nursery Leadership Team	
Consultants at the Nursery	
Nursery Structure, Management and Governance.....	3
Trustees and Teams	
Operations Team	
People Team, Building Team, Finance Team	
Leadership Team	
St Mary's as an employer	
Objectives, Mission, Vision, Ethos.....	5
As defined by Ofsted and The Early Years Statutory Framework	
Achievements and Performance.....	6
Leadership	
Safeguarding	
Training	
Supporting our families	
Independent Examiner's report of St Mary's Nursery, Camberley for the year ended 31st August 2024.....	11
Independent Examiner's Statement	
Statement of Financial Activities: 1st September 2023 to 31st August 2024.....	12
Balance Sheet at 31st August 2024.....	13
Notes to the Financial Statements for the year ended 31 st August 2024	
1. Accounting Policies	
2. Legal status of the Trust	
3. Income	
4. Restricted Funds	
5. Analysis of Resources expended	
6. Tangible Fixed Assets	
7. Debtors	
8. Creditors	
9. Independent Examiner's Fee	
10. Related Parties	



Administrative Information

St Mary's Nursery is registered with Ofsted, registered number EY556342 and is a member of the Early Years Alliance.

Correspondence address:

St Mary's Nursery, Camberley, The Pavillion, Watchetts Recreation Ground, Park Road, Camberley, Surrey, GU15 2SR.

St Mary's Nursery, Camberley is a Charitable Incorporated Organisation with the Charity Commission, Charity Number 1168824.

All trustees give their time voluntarily and do not receive any remuneration or benefits. The trustees meet on bi-monthly the finance officer and the senior leadership team attend the meetings.

The Trustee members at the time of this report are:

Chairperson:	Reverend Andrew Knowles
Vice chairperson:	Mr Paul Amphlett
Treasurer:	Vacant
Trustees:	Mrs Sue Dunn
	Miss Jo Atkinson
	Reverend Sue Duplock

Nursery Leadership Team members:

Nursery Manager:	Mrs Sue Gauntlett
	(Designated Safeguarding Lead & SENCO)
Deputy Manager:	Mrs Penny Fairminer
	(Deputy Designated Safeguarding Lead)
Lead Practitioner:	Miss Paula Fosh
	(Lead Practitioner, DDSL, SEW Lead)

Consultants at the Nursery:

Mrs Karen Liddington (HR Consultant)
Mr John Bradstreet (Health and Safety Consultant)



Nursery Structure, Management and Governance

The Trustees of St Mary's Nursery includes: The Chair, Vice Chair, Treasurer and three other members.

The Nursery Leadership Team includes: The Nursery Manager, Deputy Manager and Lead Practitioner.

The Trustees are responsible for making decisions on all matters of general concern and importance to the Nursery including deciding on how the excess funds are to be spent. New members receive initial training and induction.

The Trustees and Leadership Team meet termly, the Leadership Team present a report at the meetings.

Operations Team

The Nursery Operations Team carries out the work of the Trustees between meetings.

- Andrew Knowles (Chair)
- Sue Gauntlett (Nursery Manager)
- Penny Fairminer (Deputy Manager)
- Esther Westwood (Finance Administrator)

People's Team

Overseeing the resources of people, those employed by St Mary's Nursery or volunteering for St Mary's Nursery, to ensure that we support them and fulfil our legal obligations.

- Paul Amphlett (Vice Chair)
- Sue Dunn (Trustee)
- Sue Gauntlett (Nursery Manager)
- Paula Fosh (Lead Practitioner)
- Advisers: HR Consultant,
Surrey Early Years, Data Protection Officer.

Building Team

Overseeing the resources of our building to ensure it is appropriately cared for and safe to deliver the provision of St Mary's Nursery.

- Jo Atkinson (Trustee)
- Sue Gauntlett (Nursery Manager)
- Julie Gatenby (Deputy SENCO)



Finance Team

Overseeing the resources of our finances to ensure they are appropriately managed and support the provision of St Mary's Nursery.

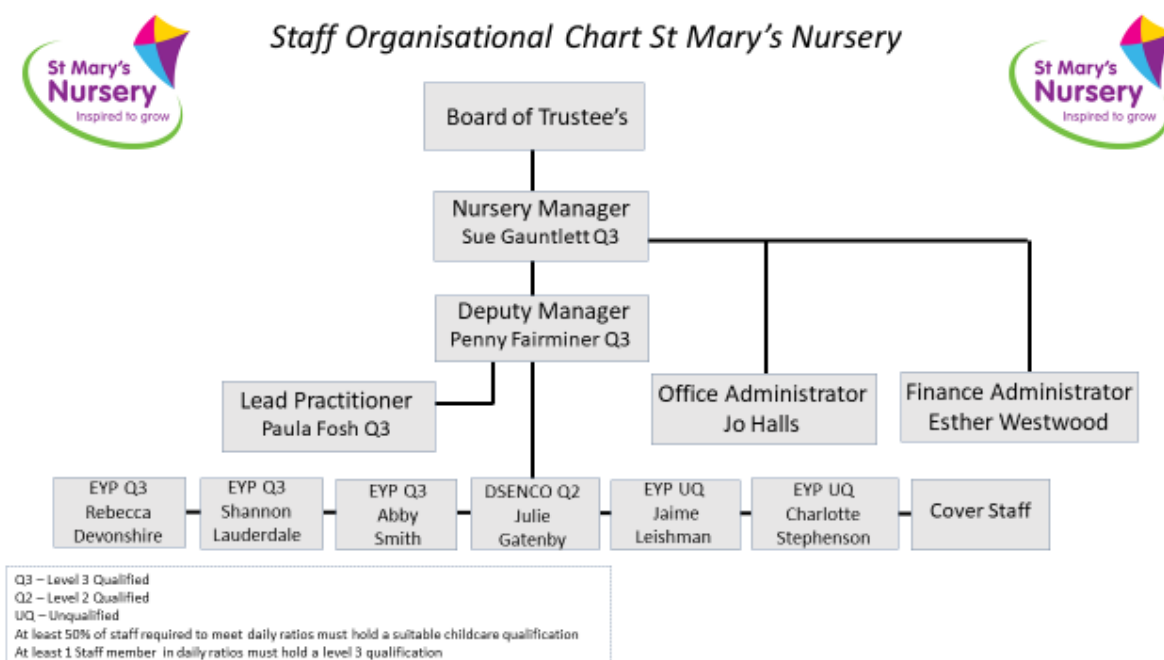
- Treasurer: vacant
- Sue Gauntlett (Nursery Manager)
- Esther Westwood (Finance Administrator)

Nursery Leadership Team

The Nursery Leadership Team oversees the provision at St Mary's Nursery, and it is accountable to the Trustees.

- Sue Gauntlett (Nursery Manager, DSL & SENCO)
- Penny Fairminer (Deputy Manager, DSL)
- Paula Fosh (Lead Practitioner, DDSL, SEW Lead)

The Nursery Leadership Team oversees St Mary's Nursery and offers leadership and support.



St Mary's Nursery as an employer:

Nursery Manager, DSL & SENCO: Mrs Sue Gauntlett (40 hours per week)

Deputy Manager, DSL: Mrs Penny Fairminer (40 hours per week)

Lead Practitioner, DDSL: Miss Paula Fosh (32.5 hours per week)

Deputy SENCO: Mrs Julie Gatenby (32.5 hours per week)

Office Administrator: Mrs Jo Halls (20 hours per week)

Finance Administrator: Mrs Esther Westwood (5 hours per week)

Early Years Practitioners: (Various hours per week)

The Nursery values its staff and is dedicated to investing in continuous personal development. The Nursery is grateful to the commitment of its staff and its trustees. This year has been the most successful for the staff team when we received an Outstanding from Ofsted. We are thankful for their commitment to St Mary's and we are indebted for their dedication.

The Nursery oversees those who volunteer.

Like most charities, St Mary's Nursery has seen a change in its volunteering, some have stepped down, and some are re-engaging. We are grateful for all who have given their time, and work for the benefit of us all.

Objectives

Our Vision (Impact) is for children to leave us ready for their journey into school, having reached their full potential to take them into the wider world.

Our Mission (Intent) is to inspire children to grow, flourish and live life in all its fullness.

Our Ethos (Implementation) we provide an enabling environment by creating opportunities to explore, problem solve, risk take and become deeply engaged in play. We follow children's interests and extend their learning using open-ended questions and resources in the moment.

Our Guidelines: we follow the guidance of the Early Years Statutory Framework and Ofsted Requirements.

Our Curriculum is based on the EYFS learning and development requirements. Our current Curriculum Focus since the pandemic and due to our high number of EAL children is PSED particularly children's Wellbeing and C&L, we have introduced the Thrive Approach and Early Talk Boost programme to support this.



We have also adopted a specialist pedagogical approach, The Curiosity Approach, which is based on child-led learning.

It is our INTENT to create children who are thinkers and doers who make their own choices, building confidence, critical thinking and problem-solving skills.

How we implement our curriculum

Our environment covers all 7 areas of learning, with open ended natural resources, we allow children to be the leaders of their own learning. Our practitioners use their in-depth knowledge of their key children, with the 3 I's at the forefront of their minds when setting up invitations to play focusing on what children need to know next.

Using open-ended questions and teachable moments, practitioners extend children's learning 'in the moment'.

How do we know the impact of our curriculum?

Before children join the setting, we gather information from the parents which gives us a holistic view of the child before they start.

Through consistent progress and development updates with parents, we can understand what children 'know and can do', ensuring they reach their own individual full potential for the next stage in their learning journey.

Achievements and Performance

Review of 2023/2024

At every Trustee meeting, the following three papers are presented:

- Paper A: a record of decisions made and how we are progressing with any action required.
- Paper B: updates from the Leadership Team.
- Paper C: updates from subgroups of the Nursery.

October 2023

General

We redesigned and delivered a brand new website.



We installed outdoor wooden structures providing both shade from the sun and protection from the rain. We have scheduled a further structure for the construction area to be completed in November over a weekend. These are funded by the ring-fenced restricted funds from last year.

Andrew and Paul visited to celebrate Harvest with the children. Andrew shared a lovely story 'Handa's Surprise' and talked to the children about the growing cycle of a sunflower. We enjoyed some harvest action songs too!

Following feedback from the parent questionnaire carried out before the summer, we have changed the structure on our communication with parents on their child's development. We have moved away from formal observations to open weekly communication with parents about their learning at nursery and their learning at home. This is proving successful; parents are having more involvement in their child's development and have a better understanding of their development.

Our new starters have settled well, we have a high level of children with English as an additional language. We welcomed families from the Afghan relocation scheme run by Surrey Heath Borough Council.

We invited the Early Years Effectiveness team to visit to ensure we offer all we can to support children with English as an Additional Language (EAL) and children from the Afghan relocation scheme. They were very positive about our approach, and we are awaiting a visit report.

The 27 children who left for school before the summer, 5 of whom have Education Health Care Plans in place, made a smooth transition. Julie Deputy SENCO supported the SEND children and their families when attending stay and play sessions at their new school.

Safeguarding

Early years completed the Section 11 of The Children's Act safeguarding audits, for early years settings. This is currently carried out in schools only. We have ours booked on 13th October.

Training

Penny, Paula & Shannon are on schedule to finish their Level 3 Diploma in the Autumn term.

Paula has completed the first module of the Designated Safeguarding Lead training, the second module is booked for January, this is as a backup measure in case Penny, or I are absent. It ensures we always have a DSL onsite.

All the team have updated their mandatory training as part of our best practice approach.

Julie and Kelsey are booked on Paediatric First Aid on 11th October.

Remaining Trustees to complete the WTSC course.

Supporting our children and their families

We will be providing the government food vouchers for the half term break at £15 per child for our most vulnerable and disadvantaged families.

The Early Talk Boost programme is proving successful this term, we will be posting the results on our website once the 9-week programme is complete. This supports children with social and communication and language skills.

We have received very generous harvest donations for the Besom food bank. We will be taking this to the church centre at the end of the week of 2nd October.



March 2024

General

Our focus now is being Ofsted ready! We have again updated our policies and procedures as there has been new legislation from the DfE on Working Together to Safeguard Children, Keeping Children Safe in Education, Early Years Foundation Stage Statutory Framework, Ofsted's Early Years Inspection Framework, Early Years Qualification Requirements and Standards. Lots of reading!!

This Easter break we will receive a ton of gravel for the new construction area, the riverbed and bridge will be completed.

We secured £500 ward councillor community fund grant to purchase the resources needed for the new construction area. Once it is complete, Surrey Heath would like to take photos for the Heathscene publication.

We also secured £150 gift card from the Co-operative to provide healthy snacks for the children through the next term to take the pressure off parents to make donations during the cost-of-living crisis. We will be collecting this on 7th March from the Co-operative Funeral Care in Camberley. They would like photos too!

Sue Dunn has been visiting the nursery weekly to read stories to the children, they have taken a shine to Sue and look forward to spending time with her.



We asked Sue, as parent liaison to meet parents on our return from half term to ask them about their child's progress and if they had any improvements they felt was needed, this is something Ofsted will do. The outcome was extremely positive.

The nursery AGM report for the Church and the nursery AGM has been submitted.

We have been liaising with Charlie Crossley with regards to drone footage of the inside nursery environment for our website. It is nearly there just a few tweaks left.

During the Christmas and half term break some of the team made changes to the inside of the nursery as part of our reflective practice. We noticed that some areas were not being accessed by

the children. After the changes the children now can engage in all the areas much more easily. These reflections are evidenced for Ofsted.

Safeguarding

Early years completed the Section 11 of The Children's Act safeguarding audit, for early years settings. We passed all the criteria! The new annual 2023 Safeguarding and Welfare Audit was completed.

Training

Penny and Paula completed their Level 3 Diploma, and we are awaiting their certificates. Shannon is still awaiting IQ completion.

Paula has completed the Designated Safeguarding Lead training and is now a DDSL. This is as a backup measure in case Penny, or I are absent. It ensures we always have a DSL onsite. Sue and Penny completed DSL Refresher Training.

All the team have updated their mandatory training as part of our best practice approach. Jaime has completed the Early Talk Boost training to support Paula to deliver this beneficial training.

Julie and Kelsey completed Paediatric First Aid on 11th October.

All Trustees have completed the WTSC course.

Supporting our children and their families

We are continuing to provide the government food vouchers for our most vulnerable and disadvantaged families.

The Early Talk Boost programme is proving successful this term, we will be posting the results on our website once the 9-week programme is complete. This supports children with social and communication and language skills.



June

General

We were awarded an **OUTSTANDING** outcome by Ofsted.

We cannot express how extremely excited and thrilled we are! Penny and I will talk you through the experience.

We have had wonderful comments from parents and Early Years.

Due to the introduction of the new two-year-old funding from the DfE on 1st April, we have been inundated with enquiries. We normal take 8 2year olds per session we have now increased this to 12 from September to meet demand. The following year 2025/2026 we currently do not have any morning places available, only afternoons.

We have been recommended by early years to other setting to visit to view our practice, environment and how we support SEND children.

Having spoken with the Early Years Commissioning Team, there is possible DfE funding to expand our provision for two's by introducing a second building in our outdoor space. Obviously, to apply for this we would need to submit a business plan.

We have been trailing wearing non-uniform. The staff approached me to consider this move. They felt that as we have been recognised by Ofsted and having The Curiosity Approach truly embedded in our practice, we should follow that 'home from home' approach and wear our own clothes.

I asked the team to let me know individually how that would look and why they wanted the change. They commented that it should of course be practical, appropriate and professional. I made no guidelines on what was acceptable or unacceptable I wanted to see what they would choose. I am happy to say I have not had to ask anyone to change!

The feedback we have received from parents has been very positive and children have made lovely comments. We therefore would like to make this change permanent.

Safeguarding

Ofsted found – The arrangements for safeguarding are effective.

There is an open and positive culture around safeguarding that puts children's interests first.

Training

Ofsted found – Managers and staff enjoy exceptional training opportunities.

We have two staff members renewing their first aid next month.

Jaime, our only unqualified member of staff has enrolled on the Level 3 Diploma which starts in September for 18 months.

Jo and I are undergoing training for the new Surrey Funding Portal being launched in September.

We have been invited to take part in another pilot scheme by early years. This is an emotional coaching course that runs for the academic year. It will enable practitioners to support children's emotional wellbeing and make a positive impact. Parents can opt out if they wish.

We have been awarded early intervention funding to book Freemantle's School (specialist provision for SEND children) to deliver bespoke training to us in a twilight session. This will enable all staff to support children with additional needs to regulate their emotions, avoiding huge meltdowns that can sometimes last for 20 minutes.

Penny and I attend the manager's network run by early years, this updates us with any changes and a great opportunity to talk to other managers. We were congratulated on our outstanding outcome 😊

Supporting our children and their families

We are continuing to provide the government food vouchers for our most vulnerable and disadvantaged families.

The Early Talk Boost programme is proving successful this term, we will be posting the results on our website once the 9-week programme is complete. This supports children with social and communication and language skills.



Independent Examiner's Report to the Trustees of St Mary's Nursery, Camberley

(Registered Charity no. 1168824)

I report on the accounts of St Mary's Nursery for the year ended 31 August 2024 which are set out on the attached pages in respect of an examination carried out under section 145 of the Charities Act 2011 ("the Act").

Respective responsibilities of the Trustees and the examiner

The charity's trustees consider that an audit is not required for this year under section 144 (2) of the Act and that an independent examination is needed.

It is my responsibility to:

- Examine the accounts under section 145 of the Act;
- Follow the procedures laid down in the General Directions given by the Charity Commissioners under section 145(5) (b) of the Act; and
- State whether particular matters have come to my attention.

Basis of independent examiner's statement

My examination was carried out in accordance with the General Directions given by the Charity Commissioners. An examination includes a review of the accounting records kept by the charity and a comparison of the accounts presented with those records. It also includes consideration of any unusual items or disclosures in the accounts and seeking explanations from you as trustees concerning any such matters. The procedures undertaken do not provide all the evidence that would be required in an audit and consequently we do not express an audit opinion on the view given by the accounts.

Independent examiner's statement

I have completed my examination. I confirm that no material matters have come to my attention in connection with the examination giving me cause to believe that in any material respect:

1. Accounting records were not kept in respect of the charity as required by section 130 of the Act; or
2. The accounts do not accord with those records; or
3. The accounts do not comply with the applicable requirements concerning the form and content of accounts set out in the Charities (Accounts and Reports) Regulations.

I have no concerns and have come across no other matters in connection with the examination to which attention should be drawn in this report in order to enable a proper understanding of the accounts to be reached.

Kim Swain MA (Oxon) FCA

Date:

Radford & Sergeant Limited
Building 3
Watchmoor Park
Camberley
Surrey
GU15 3YL

St Mary's Nursery Camberley

**STATEMENT OF FINANCIAL ACTIVITIES (INCLUDING INCOME AND EXPENDITURE ACCOUNT) FOR THE PERIOD
FROM
1 SEPTEMBER 2023 TO 31 AUGUST 2024**

		Unrestricted Funds 2024 £	Restricted Funds 2024 £	Total Funds 2024 £	Total Funds 2023 £
Income from:	Notes				
Donations and legacies	3&4	170,180.31	51,963.69	222,144.00	189,420.98
Charitable activities	3	19,453.65		19,453.65	25,901.95
Other trading activities					
Investments					
Other income	3	3,321.50		3,321.50	1,080.81
Total Income		192,955.46	51,963.69	244,919.15	216,403.74
Expenditure on:		£			
Raising funds					
Charitable activities	5	192,706.56	48,745.22	241,451.78	209,425.67
Total Expenditure		192,706.56	48,745.22	241,451.78	209,425.67
Net income		248.90	3,218.47	3,467.37	6,978.07
Transfer between funds		-	-	-	-
Other recognised gains and losses					
Net Movement in Funds		-	-	-	-
Reconciliation of funds					
Total funds brought forward		111,349.75	19,901.57	131,251.32	124,273.25
Total funds carried forward		111,598.65	23,120.04	134,718.69	131,251.32

St Mary's Nursery Camberley

NOTES TO THE FINANCIAL STATEMENTS

1 Accounting Policies

The principal accounting policies adopted, judgements and key sources of estimation uncertainty in the preparation of the financial statements are as follows:

a) Basis of preparation

The financial statements have been prepared in accordance with Accounting and Reporting by Charities: Statement of Recommended Practice applicable to charities preparing their accounts in accordance with the Financial Reporting Standard applicable in the UK and Republic of Ireland (FRS 102) - (Charities SORP (FRS 102) and the Financial Reporting Standard applicable in the UK and Republic of Ireland (FRS 102).

St Mary's Nursery Camberley meets the definition of a public benefit entity under FRS 102. Assets and liabilities are initially recognised at historical cost or transaction value unless otherwise stated in the relevant accounting policy note(s).

b) Preparation of the accounts on a going concern basis

The accounts are prepared on a Going Concern basis.

c) Income

Income is recognised when the charity has entitlement to the funds, any performance conditions attached to the item(s) of income have been met, it is probable that the income will be received and the amount can be measured reliably.

Income from government and other grants, whether 'capital' grants or 'revenue' grants, is recognised when the charity has entitlement to the funds, any performance conditions attached to the grants have been met, it is probable that the income will be received and the amount can be measured reliably and is not deferred.

d) Tangible fixed assets

Tangible fixed assets are stated at their historic cost price less accumulated depreciation. Historical cost includes expenditure that is directly attributable to bringing the asset to the location and condition necessary for use. The assets' residual values, useful lives and depreciation methods are reviewed if there is an indication of significant change since the last reporting date. Depreciation is provided at the following annual rates in order to write off each asset over its estimated useful life:

Office equipment - 33% straight line

e) Fund accounting

Unrestricted funds are available to spend on activities that further any of the purposes of the charity.

Restricted funds are donations which the donor has specified are to be solely used for particular areas of the Trust's work or for specific research projects being undertaken by the Trust. As at 31 August 2024 the Trust's funds consisted of £111,598 of unrestricted funds (22/23: £111,349) and £23,120 of restricted funds (22/23: £19,901).

f) Expenditure and irrecoverable VAT

Expenditure is recognised once there is a legal or constructive obligation to make a payment to a third party, it is probable that settlement will be required and the amount of the obligation can be measured reliably.

Expenditure is classified under the following activity headings:

- Expenditure on raising funds
- Expenditure on charitable activities
- Irrecoverable VAT is charged as a cost against the activity for which the expenditure was incurred.

g) Cash at bank and in hand

Cash at bank and cash in hand includes cash and short term highly liquid investments with a short maturity of three months or less from the date of acquisition or opening of the deposit or similar account. Cash in transit is included.

h) Costs relating to the activities

All costs relate to the single charitable activity of children's nursery services.

2 Legal status of the Trust

The Trust is a Charitable Incorporated Organisation and has no share capital.

3 Income

	2024	2023
Donations and legacies		
Grants provided by the government	222,144.00	189,420.98
Sundry donations	1,460.00	385.00
	223,604.00	189,805.98
Charitable activities		
Session fees	19,453.65	25,901.95
	19,453.65	25,901.95
Investments		
Bank interest received	1,079.10	695.81
	1,079.10	695.81
Other trading activities		
Sundry income	782.40	-
Total Income	244,919.15	216,403.74

4 Restricted Funds

	2024
Surrey Winter Food Grant	
Balance at 1st September 2023	
Funding in the year	2,580.00
Less: Expended in 2023/24	2,580.00
Remaining	-
Pupil Premium	
Balance at 1st September 2023	267.46
Funding in the year	2,576.04
Less: Expended in 2023/24	1,229.96
Remaining	1,613.54
Deprivation Funding	
Balance at 1st September 2023	17,364.47
Funding in the year	11,402.73
Less: Expended in 2023/24	8,296.77
Remaining	20,470.43
Disability Funding	
Balance at 1st September 2023	1,059.13
Funding in the year	858.92
Less: Expended in 2023/24	881.98
Remaining	1,036.07
Early Intervention/Discretionary Funding	
Balance at 1st September 2023	-
Funding in the year	34,546.00
Less: Expended in 2023/24	34,546.00
Remaining	-
Fixed Assets	
Balance as at 1st September 2023- allocated to RF	1,210.51
Depreciation in the year- allocated to RF	1,210.51
Remaining	-
Overall - all Restricted funds	
Balance at 1st September 2023	19,901.57
Funding in the year	51,963.69
Less: Expended in 2023/24	48,745.22
Remaining	23,120.04

6 Tangible fixed assets

	31/08/2024
	Office
	equipment
COST	
At 1 September 2023	8,995.04
Additions	
Disposals	
At 31 August 2024	<u>8,995.04</u>
DEPRECIATION	
At 1 September 2023	4,496.63
Charge for the year	1,799.01
At 31 August 2024	<u>6,295.64</u>
NET BOOK VALUE	
At 31 August 2024	<u>2,699.40</u>
At 31 August 2023	<u>4,498.41</u>

7 Debtors

	2024	2023
Rent deposit	-	-
Trade Debtors	157.50	2,469.38
Prepayments	1,570.80	1,082.47
	<u>1,728.30</u>	<u>3,551.85</u>

8 Creditors

	2024	2023
Funding fees in advance	1,260.00	-
Accruals	756.00	720.00
Trade Creditors	458.25	119.70
PAYE/ Pension	2,416.38	3,055.82
Wages payable	-	-
	<u>4,890.63</u>	<u>3,895.52</u>

9 Independent examiner's fee

		2024		2023
Independent exam		280.00		270.00
Accounts		476.00		450.00
		756.00		720.00



10 Related Parties

There were no related party transactions in the year.

"The best teachers educate with their hearts, not just their minds. You took my hand, opened my mind and touched my heart. Thank you for being a part of my journey"
- parent testimonial

St. Mary's Nursery
Watchett's Recreation Ground
Park Road, Camberley, Surrey GU15 2SR

Phone 01276 581309
office@stmarysnurserycamberley.co.uk

Registered Charity number 1168824
Ofsted number EY556342

[Cookies & Privacy Policy](#)

ST MARYS NURSERY, CAMBERLEY

England & Wales - Charity number 1168824

Accounts



Trustees' Annual Report for the period

From	Period start date			To	Period end date		
	Day 1st	Month September	Year 2022		Day 31st	Month August	Year 2023

Section A Reference and administration details

Charity name St Mary's Nursery, Camberley

Other names charity is known by

Registered charity number (if any) 1168824

Charity's principal address Watchetts Recreation Ground

Park Road

Camberley, Surrey

Postcode GU15 2SR

Names of the charity trustees who manage the charity

	Trustee name	Office (if any)	Dates acted if not for whole year	Name of person (or body) entitled to appoint trustee (if any)
1	Revd Andrew Knowles	Chair		
2	Kay Rothwell	Secretary	Resigned 2023	
3	Steve Jefferies	Treasurer	Joined 2023	
4	Paul Amphlett	Vice Chair		
5	Sue Dunn	Trustee		
6	Revd Anne Mitchell	Trustee	Resigned 2023	
7	Jo Atkinson	Trustee		
8	Sue Duplock	Trustee	Joined 2023	
9				
10				

Names of the trustees for the charity, if any, (for example, any custodian trustees)

Name	Dates acted if not for whole year

Names and addresses of advisers (Optional information)

Type of adviser	Name	Address
HR Consultant	Personnel Consultants Ltd	Aspect House, Pattenden Lane, Marden TN12 9QJ
H & S Consultant	Just Safety	Market House, 21 Lenhen Street, Alton Hampshire GU34 1HG

Name of chief executive or names of senior staff members (Optional information)

Mrs Susan Gauntlett – St Mary's Nursery Manager

Section B

Structure, governance and management

Description of the charity's trusts

Type of governing document (eg. trust deed, constitution)	CIO – Foundation Registered 18 th August 2016
How the charity is constituted (eg. trust, association, company)	Charitable Incorporated Organisation
Trustee selection methods (eg. appointed by, elected by)	Elected and recommendations from existing Trustees and PCC

Additional governance issues (Optional information)

You **may choose** to include additional information, where relevant, about:

- policies and procedures adopted for the induction and training of trustees;
- the charity's organisational structure and any wider network with which the charity works;
- relationship with any related parties;
- trustees' consideration of major risks and the system and procedures to manage them.

St Mary's Nursery is registered with Ofsted (reg no. EY556342) and is a member of the Early Years Alliance.

The nursery has policies and procedures that are reviewed annually. We have a child protection policy in place and DBS checks are carried out on all staff and trustees in line with the Statutory Requirements of the EYFS.

All trustees give their time voluntarily and do not receive any remuneration or benefits. The trustees meet on bi-monthly the finance officer and the senior leadership team attend the meetings.

The trustees have set up a sub-committee teams who are responsible for different aspects of the nursery. The Chair and Vice Chair are members of this team, minutes are taken at every meeting by the Clerk to the Trustees and circulated to the trustees and leadership team.

Section C

Objectives and activities

Summary of the objects of the charity set out in its governing document

The aim of the nursery is to advance the education and social development of pre-school children by providing a stimulating and secure environment with a Christian ethos in which children are encouraged to learn through child-initiated play. The charity promotes and delivers access to affordable, flexible and high quality childcare provision.

Summary of the main activities undertaken for the public benefit in relation to these objects (include within this section the statutory declaration that trustees have had regard to the guidance issued by the Charity Commission on public benefit)

Our activities further the public benefit by supporting the needs of the children and families, through promoting the importance of community involvement in childcare.

We work closely with Surrey Heath Family Support Centre, other local nursery settings and the local authorities to promote the wellbeing of our children and their families.

We work in partnership with the local feeder schools to ensure a smooth transition for children when they move from nursery to reception.

We are based in an accessible community setting to ensure that all families are able to benefit from our provision ensuring inclusivity.

We promote the care, safety, education, health and wellbeing of the children in our community enabling them to thrive.

Additional details of objectives and activities (Optional information)

You **may choose** to include further statements, where relevant, about:

- policy on grantmaking;
- policy programme related investment;
- contribution made by volunteers.

Summary of the main achievements of the charity during the year

We have had installed more permanent outdoor shelters over the learning areas this was funded by the deprivation funding we receive. The shelters provide shade from the sun and shelter from the rain. This enables children to spend more time outside in all weathers. This particularly benefits the vulnerable children that may not have access to an outdoor area at home.

We continue to support our FEET (Free Early Education for Two's) funded two year olds and EYPP (Early Years Pupil Premium) children by providing the government food vouchers. We also hosted a winter coat exchange where we received donations of child and adult coats for anyone who needed them.

The 'In the Moment Planning' approach is established in our practice. Along with elements of the 'Curiosity Approach' which encourages us to create the 'thinkers & doers' of the future by providing an environment that inspires curiosity. We have taken elements of Reggio Emilia philosophy, which encourages children to take a lead in their learning and Hygge creating a warm and inviting environment for good wellbeing.

The outdoor and indoor environments have evolved by using upcycled items reducing waste.

We have provided charitable sessions for some of our most vulnerable families to support the wellbeing of the children and their families.

In the holidays we supported our families by providing food vouchers, a lending library, free resources via our online system.

We had an increasing number of Special Educational Needs children with a range of needs some with very complex needs to whom we provide 1:1 adult support. A large part of our cohort are FEET funded two year olds and children with English as an additional language. We also have children who are on Child Protection Plans (CPP) or are Children In Need (CIN).

We adapted our environment to support all children's individual needs.

At the end of summer term, we had 26 children successfully transition to school.

The trustees are committed to investing in personal development of all the nursery team:-

- The nursery manager completed the Thrive Licensed Practitioner course. This will provide support in emotional wellbeing and self-regulation to children.
- The Deputy Manager completed the Designated Safeguarding Lead training.
- The Lead Practitioner attended Early Talk Boost training which supports children with social and language development delay as an impact of the pandemic.
- Three staff members have nearly completed the Level 3 Diploma.
- All staff received mentoring and coaching on our new approach to observations and assessments.

Section D

Achievements and performance

All staff received salary increases from 1st January 2023 (early increase due to the cost of living crisis) due to the national minimum wage increase.

Section E Financial review

Brief statement of the charity's policy on reserves

Reserve policy:

To ensure that we hold enough money in our Reserve account to cover statutory redundancy payments, rent for four months and staff wages for four months. We have chosen four months as this would give ample notice period to the parents and Surrey for funding.

- Direct Charitable Expenses £40,000.00
- Indirect Charitable Expenses £16,000.00
- Redundancy £10,000.00
- Repairs and Maintenance £ 8,000.00
- Total Reserve £74,000.00

Details of any funds materially in deficit

Further financial review details (Optional information)

You **may choose** to include additional information, where relevant about:

- the charity's principal sources of funds (including any fundraising);
- how expenditure has supported the key objectives of the charity;
- investment policy and objectives including any ethical investment policy adopted.

Funds are obtained through a combination of Government Funding and Session Fees for services provided by the Nursery.

There is also a limited amount raised through fundraising which we plough directly into the Nursery. We continue to raise funds for the Nursery outside area.

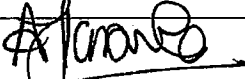
We made excess funds £6,978.07. The excess funds were from Total funding and will be used towards the continuing garden project.

Section F Other optional information

Section G Declaration

The trustees declare that they have approved the trustees' report above.

Signed on behalf of the charity's trustees

Signature(s)		
Full name(s)	Andrew Knowles	
Position (eg Secretary, Chair, etc)	Chair	

Date 27th March 2024.

Independent Examiner's Report to the Trustees of St Mary's Nursery, Camberley

(Registered Charity no. 1168824)

I report on the accounts of St Mary's Nursery for the year ended 31 August 2023 which are set out on the attached pages in respect of an examination carried out under section 145 of the Charities Act 2011 ("the Act").

Respective responsibilities of the Trustees and the examiner

The charity's trustees consider that an audit is not required for this year under section 144 (2) of the Act and that an independent examination is needed.

It is my responsibility to :

- Examine the accounts under section 145 of the Act;
- Follow the procedures laid down in the General Directions given by the Charity Commissioners under section 145(5) (b) of the Act; and
- State whether particular matters have come to my attention.

Basis of independent examiner's statement

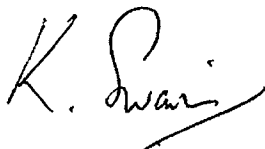
My examination was carried out in accordance with the General Directions given by the Charity Commissioners. An examination includes a review of the accounting records kept by the charity and a comparison of the accounts presented with those records. It also includes consideration of any unusual items or disclosures in the accounts and seeking explanations from you as a trustees concerning any such matters. The procedures undertaken do not provide all the evidence that would be required in an audit and consequently we do not express an audit opinion on the view given by the accounts.

Independent examiner's statement

I have completed my examination. I confirm that no material matters have come to my attention in connection with the examination giving me cause to believe that in any material respect:

1. Accounting records were not kept in respect of the charity as required by section 130 of the Act; or
2. The accounts do not accord with those records; or
3. The accounts do not comply with the applicable requirements concerning the form and content of accounts set out in the Charities (Accounts and Reports) Regulations.

I have no concerns and have come across no other matters in connection with the examination to which attention should be drawn in this report in order to enable a proper understanding of the accounts to be reached.



Kim Swain MA (Oxon) FCA

Date: 3/4/2024

Radford & Sergeant Limited
Building 3
Watchmoor Park
Camberley
Surrey
GU15 3YL

Signed By

SUSAN GAUNTLETT

Date Signed	2024-04-16 09:42:32
Email	manager@stmarysnurserycamberley.co.uk
Printed Name	Susan Gauntlett
IP Address	2a00:23a8:4cc0:fa01:f9e8:6ca4:4f3e:b2d3
Browser User Agent	Mozilla/5.0 (Windows NT 10.0; Win64; x64) AppleWebKit/537.36 (KHTML, like Gecko) Chrome/123.0.0.0 Safari/537.36 Edg/123.0.0.0
Name of signatory	Sue Gauntlet

Independent Examiner's Report to the Trustees of St Mary's Nursery, Camberley

(Registered Charity no. 1168824)

I report on the accounts of St Mary's Nursery for the year ended 31 August 2023 which are set out on the attached pages in respect of an examination carried out under section 145 of the Charities Act 2011 ("the Act").

Respective responsibilities of the Trustees and the examiner

The charity's trustees consider that an audit is not required for this year under section 144 (2) of the Act and that an independent examination is needed.

It is my responsibility to :

- Examine the accounts under section 145 of the Act;
- Follow the procedures laid down in the General Directions given by the Charity Commissioners under section 145(5) (b) of the Act; and
- State whether particular matters have come to my attention.

Basis of independent examiner's statement

My examination was carried out in accordance with the General Directions given by the Charity Commissioners. An examination includes a review of the accounting records kept by the charity and a comparison of the accounts presented with those records. It also includes consideration of any unusual items or disclosures in the accounts and seeking explanations from you as a trustees concerning any such matters. The procedures undertaken do not provide all the evidence that would be required in an audit and consequently we do not express an audit opinion on the view given by the accounts.

Independent examiner's statement

I have completed my examination. I confirm that no material matters have come to my attention in connection with the examination giving me cause to believe that in any material respect:

1. Accounting records were not kept in respect of the charity as required by section 130 of the Act; or
2. The accounts do not accord with those records; or
3. The accounts do not comply with the applicable requirements concerning the form and content of accounts set out in the Charities (Accounts and Reports) Regulations.

I have no concerns and have come across no other matters in connection with the examination to which attention should be drawn in this report in order to enable a proper understanding of the accounts to be reached.

Kim Swain MA (Oxon) FCA

Date:

Radford & Sergeant Limited
Building 3
Watchmoor Park
Camberley
Surrey
GU15 3YL

St Mary's Nursery Camberley

**STATEMENT OF FINANCIAL ACTIVITIES (INCLUDING INCOME AND
EXPENDITURE ACCOUNT) FOR THE PERIOD FROM
1 SEPTEMBER 2022 TO 31 AUGUST 2023**

		Unrestricted Funds	Restricted Funds	Total Funds	Total Funds
		2023	2023	2023	2022
		£	£	£	£
Income from:	Notes				
Donations and legacies	3&4	143,184.60	46,236.38	189,420.98	181,049.89
Charitable activities	3	25,901.95		25,901.95	33,820.65
Other trading activities					
Investments					
Other income	3	1,080.81		1,080.81	597.88
Total Income		170,167.36	46,236.38	216,403.74	215,468.42
Expenditure on:					
Raising funds					
Charitable activities	5	166,904.47	42,521.20	209,425.67	203,731.78
Total Expenditure		166,904.47	42,521.20	209,425.67	203,731.78
Net income		3,262.89	3,715.18	6,978.07	11,736.64

St Mary's Nursery Camberley

NOTES TO THE FINANCIAL STATEMENTS

1 Accounting Policies

The principal accounting policies adopted, judgements and key sources of estimation uncertainty in the preparation of the financial statements are as follows:

a) Basis of preparation

The financial statements have been prepared in accordance with Accounting and Reporting by Charities: Statement of Recommended Practice applicable to charities preparing their accounts in accordance with the Financial Reporting Standard applicable in the UK and Republic of Ireland (FRS 102) - (Charities SORP (FRS 102)) and the Financial Reporting Standard applicable in the UK and Republic of Ireland (FRS 102).

St Mary's Nursery Camberley meets the definition of a public benefit entity under FRS 102. Assets and liabilities are initially recognised at historical cost or transaction value unless otherwise stated in the relevant accounting policy note(s).

b) Preparation of the accounts on a going concern basis

The accounts are prepared on a Going Concern basis.

c) Income

Income is recognised when the charity has entitlement to the funds, any performance conditions attached to the item(s) of income have been met, it is probable that the income will be received and the amount can be measured reliably.

Income from government and other grants, whether 'capital' grants or 'revenue' grants, is recognised when the charity has entitlement to the funds, any performance conditions attached to the grants have been met, it is probable that the income will be received and the amount can be measured reliably and is not deferred.

d) Tangible fixed assets

Tangible fixed assets are stated at their historic cost price less accumulated depreciation. Historical cost includes expenditure that is directly attributable to bringing the asset to the location and condition necessary for use. The assets' residual values, useful lives and depreciation methods are reviewed if there is an indication of significant change since the last reporting date. Depreciation is provided at the following annual rates in order to write off each asset over its estimated useful life:

Office equipment - 33% straight line

e) Fund accounting

Unrestricted funds are available to spend on activities that further any of the purposes of the charity. Restricted funds are donations which the donor has specified are to be solely used for particular areas of the Trust's work or for specific research projects being undertaken by the Trust. As at 31 August 2023 the Trust's funds consisted of £111,349 of unrestricted funds (21/22: £108,086) and £19,901 of restricted funds (21/22: £16,186).

f) Expenditure and irrecoverable VAT

Expenditure is recognised once there is a legal or constructive obligation to make a payment to a third party, it is probable that settlement will be required and the amount of the obligation can be measured reliably.

Expenditure is classified under the following activity headings:

- Expenditure on raising funds
- Expenditure on charitable activities
- Irrecoverable VAT is charged as a cost against the activity for which the expenditure was incurred.

g) Cash at bank and in hand

Cash at bank and cash in hand includes cash and short term highly liquid investments with a short maturity of three months or less from the date of acquisition or opening of the deposit or similar account. Cash in transit is included.

h) Costs relating to the activities

All costs relate to the single charitable activity of childrens nursery services.

2 Legal status of the Trust

The Trust is a Charitable Incorporated Organisation and has no share capital.

3 Income

	2023	2022
Donations and legacies		
Grants provided by the government	189,420.98	181,049.89
Sundry donations	385.00	597.88
	189,805.98	181,647.77
Charitable activities		
Session fees	25,901.95	33,820.65
	25,901.95	33,820.65
Investments		
Bank interest received	695.81	-
	695.81	-
Other trading activities		
Sundry income	-	-
Total Income	216,403.74	215,468.42

4 Restricted Funds

Surrey Winter Food Grant		
Balance at 1st September 2022		
Funding in the year		2,025.00
Less: Expended in 2022/23		2,025.00
Remaining		-
Pupil Premium		
Balance at 1st September 2022		267.46
Funding in the year		1,297.80
Less: Expended in 2022/23		1,297.71
Remaining		267.55
Deprivation Funding		
Balance at 1st September 2022		11,574.39
Funding in the year		9,121.26
Less: Expended in 2022/23		3,331.18
Remaining		17,364.47
Sufficiency Grant		
Balance at 1st September 2022		-
Funding in the year		-
Less: Expended in 2021/22		-
Remaining		-
Dissability Funding		
Balance at 1st September 2022		1,335.11
Funding in the year		828.00
Less: Expended in 2022/23		1,103.98
Remaining		1,059.13
Early Intervention/Discretionary Funding		
Balance at 1st September 2022		-
Funding in the year		32,964.32
Less: Expended in 2022/23		32,964.32
Remaining		-
Fixed Assets		
Balance as at 1st September 2022		5,953.42
Depreciation in the year		1,799.01
Remaining		4,154.41
Overall - all Restricted funds		
Balance at 1st September 2022		16,186.39
Funding in the year		46,236.38
Less: Expended in 2022/23		42,521.20
Remaining		19,901.57

6 Tangible fixed assets

	Office equipment
COST	
At 1 September 2022	8,651.04
Additions	344.00
Disposals	
At 31 August 2023	<u>8,995.04</u>
DEPRECIATION	
At 1 September 2022	2,697.62
Charge for the year	1,799.01
At 31 August 2023	<u>4,496.63</u>
NET BOOK VALUE	
At 31 August 2023	<u>4,498.41</u>
At 31 August 2022	<u>5,953.42</u>

7 Debtors

	2023	2022
Rent deposit	-	7,500.00
Trade Debtors	2,469.38	6,441.98
Prepayments	1,082.47	1,082.52
	<u>3,551.85</u>	<u>15,024.50</u>

8 Creditors

	2023	2022
Funding fees in advance	-	-
Accruals	720.00	600.00
Trade Creditors	119.70	2,634.30
PAYE/ Pension	3,055.82	4,767.55
Wages payable	-	10,927.04
	<u>3,895.52</u>	<u>18,928.89</u>

9 Independent examiner's fee

	2023	2022
Independent exam	270.00	250.00
Accounts	450.00	350.00
	720.00	600.00

10 Related Parties

There were no related party transactions in the year.

Independent Examiner's Report to the Trustees of St Mary's Nursery, Camberley

(Registered Charity no. 1168824)

I report on the accounts of St Mary's Nursery for the year ended 31 August 2023 which are set out on the attached pages in respect of an examination carried out under section 145 of the Charities Act 2011 ("the Act").

Respective responsibilities of the Trustees and the examiner

The charity's trustees consider that an audit is not required for this year under section 144 (2) of the Act and that an independent examination is needed.

It is my responsibility to :

- Examine the accounts under section 145 of the Act;
- Follow the procedures laid down in the General Directions given by the Charity Commissioners under section 145(5) (b) of the Act; and
- State whether particular matters have come to my attention.

Basis of independent examiner's statement

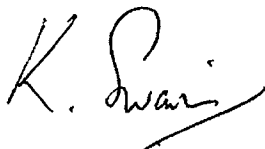
My examination was carried out in accordance with the General Directions given by the Charity Commissioners. An examination includes a review of the accounting records kept by the charity and a comparison of the accounts presented with those records. It also includes consideration of any unusual items or disclosures in the accounts and seeking explanations from you as a trustees concerning any such matters. The procedures undertaken do not provide all the evidence that would be required in an audit and consequently we do not express an audit opinion on the view given by the accounts.

Independent examiner's statement

I have completed my examination. I confirm that no material matters have come to my attention in connection with the examination giving me cause to believe that in any material respect:

1. Accounting records were not kept in respect of the charity as required by section 130 of the Act; or
2. The accounts do not accord with those records; or
3. The accounts do not comply with the applicable requirements concerning the form and content of accounts set out in the Charities (Accounts and Reports) Regulations.

I have no concerns and have come across no other matters in connection with the examination to which attention should be drawn in this report in order to enable a proper understanding of the accounts to be reached.



Kim Swain MA (Oxon) FCA

Date: 3/4/2024

Radford & Sergeant Limited
Building 3
Watchmoor Park
Camberley
Surrey
GU15 3YL

Signed By

SUSAN GAUNTLETT

Date Signed	2024-04-16 09:42:32
Email	manager@stmarysnurserycamberley.co.uk
Printed Name	Susan Gauntlett
IP Address	2a00:23a8:4cc0:fa01:f9e8:6ca4:4f3e:b2d3
Browser User Agent	Mozilla/5.0 (Windows NT 10.0; Win64; x64) AppleWebKit/537.36 (KHTML, like Gecko) Chrome/123.0.0.0 Safari/537.36 Edg/123.0.0.0
Name of signatory	Sue Gauntlet

Independent Examiner's Report to the Trustees of St Mary's Nursery, Camberley

(Registered Charity no. 1168824)

I report on the accounts of St Mary's Nursery for the year ended 31 August 2023 which are set out on the attached pages in respect of an examination carried out under section 145 of the Charities Act 2011 ("the Act").

Respective responsibilities of the Trustees and the examiner

The charity's trustees consider that an audit is not required for this year under section 144 (2) of the Act and that an independent examination is needed.

It is my responsibility to :

- Examine the accounts under section 145 of the Act;
- Follow the procedures laid down in the General Directions given by the Charity Commissioners under section 145(5) (b) of the Act; and
- State whether particular matters have come to my attention.

Basis of independent examiner's statement

My examination was carried out in accordance with the General Directions given by the Charity Commissioners. An examination includes a review of the accounting records kept by the charity and a comparison of the accounts presented with those records. It also includes consideration of any unusual items or disclosures in the accounts and seeking explanations from you as a trustees concerning any such matters. The procedures undertaken do not provide all the evidence that would be required in an audit and consequently we do not express an audit opinion on the view given by the accounts.

Independent examiner's statement

I have completed my examination. I confirm that no material matters have come to my attention in connection with the examination giving me cause to believe that in any material respect:

1. Accounting records were not kept in respect of the charity as required by section 130 of the Act; or
2. The accounts do not accord with those records; or
3. The accounts do not comply with the applicable requirements concerning the form and content of accounts set out in the Charities (Accounts and Reports) Regulations.

I have no concerns and have come across no other matters in connection with the examination to which attention should be drawn in this report in order to enable a proper understanding of the accounts to be reached.

Kim Swain MA (Oxon) FCA

Date:

Radford & Sergeant Limited
Building 3
Watchmoor Park
Camberley
Surrey
GU15 3YL

St Mary's Nursery Camberley

**STATEMENT OF FINANCIAL ACTIVITIES (INCLUDING INCOME AND
EXPENDITURE ACCOUNT) FOR THE PERIOD FROM
1 SEPTEMBER 2022 TO 31 AUGUST 2023**

		Unrestricted Funds	Restricted Funds	Total Funds	Total Funds
		2023	2023	2023	2022
		£	£	£	£
Income from:	Notes				
Donations and legacies	3&4	143,184.60	46,236.38	189,420.98	181,049.89
Charitable activities	3	25,901.95		25,901.95	33,820.65
Other trading activities					
Investments					
Other income	3	1,080.81		1,080.81	597.88
Total Income		170,167.36	46,236.38	216,403.74	215,468.42
Expenditure on:					
Raising funds					
Charitable activities	5	166,904.47	42,521.20	209,425.67	203,731.78
Total Expenditure		166,904.47	42,521.20	209,425.67	203,731.78
Net income		3,262.89	3,715.18	6,978.07	11,736.64

St Mary's Nursery Camberley

NOTES TO THE FINANCIAL STATEMENTS

1 Accounting Policies

The principal accounting policies adopted, judgements and key sources of estimation uncertainty in the preparation of the financial statements are as follows:

a) Basis of preparation

The financial statements have been prepared in accordance with Accounting and Reporting by Charities: Statement of Recommended Practice applicable to charities preparing their accounts in accordance with the Financial Reporting Standard applicable in the UK and Republic of Ireland (FRS 102) - (Charities SORP (FRS 102)) and the Financial Reporting Standard applicable in the UK and Republic of Ireland (FRS 102).

St Mary's Nursery Camberley meets the definition of a public benefit entity under FRS 102. Assets and liabilities are initially recognised at historical cost or transaction value unless otherwise stated in the relevant accounting policy note(s).

b) Preparation of the accounts on a going concern basis

The accounts are prepared on a Going Concern basis.

c) Income

Income is recognised when the charity has entitlement to the funds, any performance conditions attached to the item(s) of income have been met, it is probable that the income will be received and the amount can be measured reliably.

Income from government and other grants, whether 'capital' grants or 'revenue' grants, is recognised when the charity has entitlement to the funds, any performance conditions attached to the grants have been met, it is probable that the income will be received and the amount can be measured reliably and is not deferred.

d) Tangible fixed assets

Tangible fixed assets are stated at their historic cost price less accumulated depreciation. Historical cost includes expenditure that is directly attributable to bringing the asset to the location and condition necessary for use. The assets' residual values, useful lives and depreciation methods are reviewed if there is an indication of significant change since the last reporting date. Depreciation is provided at the following annual rates in order to write off each asset over its estimated useful life:

Office equipment - 33% straight line

e) Fund accounting

Unrestricted funds are available to spend on activities that further any of the purposes of the charity. Restricted funds are donations which the donor has specified are to be solely used for particular areas of the Trust's work or for specific research projects being undertaken by the Trust. As at 31 August 2023 the Trust's funds consisted of £111,349 of unrestricted funds (21/22: £108,086) and £19,901 of restricted funds (21/22: £16,186).

f) Expenditure and irrecoverable VAT

Expenditure is recognised once there is a legal or constructive obligation to make a payment to a third party, it is probable that settlement will be required and the amount of the obligation can be measured reliably.

Expenditure is classified under the following activity headings:

- Expenditure on raising funds
- Expenditure on charitable activities
- Irrecoverable VAT is charged as a cost against the activity for which the expenditure was incurred.

g) Cash at bank and in hand

Cash at bank and cash in hand includes cash and short term highly liquid investments with a short maturity of three months or less from the date of acquisition or opening of the deposit or similar account. Cash in transit is included.

h) Costs relating to the activities

All costs relate to the single charitable activity of childrens nursery services.

2 Legal status of the Trust

The Trust is a Charitable Incorporated Organisation and has no share capital.

3 Income

	2023	2022
Donations and legacies		
Grants provided by the government	189,420.98	181,049.89
Sundry donations	385.00	597.88
	189,805.98	181,647.77
Charitable activities		
Session fees	25,901.95	33,820.65
	25,901.95	33,820.65
Investments		
Bank interest received	695.81	-
	695.81	-
Other trading activities		
Sundry income	-	-
Total Income	216,403.74	215,468.42

4 Restricted Funds

Surrey Winter Food Grant		
Balance at 1st September 2022		
Funding in the year		2,025.00
Less: Expended in 2022/23		2,025.00
Remaining		-
Pupil Premium		
Balance at 1st September 2022		267.46
Funding in the year		1,297.80
Less: Expended in 2022/23		1,297.71
Remaining		267.55
Deprivation Funding		
Balance at 1st September 2022		11,574.39
Funding in the year		9,121.26
Less: Expended in 2022/23		3,331.18
Remaining		17,364.47
Sufficiency Grant		
Balance at 1st September 2022		-
Funding in the year		-
Less: Expended in 2021/22		-
Remaining		-
Dissability Funding		
Balance at 1st September 2022		1,335.11
Funding in the year		828.00
Less: Expended in 2022/23		1,103.98
Remaining		1,059.13
Early Intervention/Discretionary Funding		
Balance at 1st September 2022		-
Funding in the year		32,964.32
Less: Expended in 2022/23		32,964.32
Remaining		-
Fixed Assets		
Balance as at 1st September 2022		5,953.42
Depreciation in the year		1,799.01
Remaining		4,154.41
Overall - all Restricted funds		
Balance at 1st September 2022		16,186.39
Funding in the year		46,236.38
Less: Expended in 2022/23		42,521.20
Remaining		19,901.57

6 Tangible fixed assets

	Office equipment
COST	
At 1 September 2022	8,651.04
Additions	344.00
Disposals	
At 31 August 2023	<u>8,995.04</u>
DEPRECIATION	
At 1 September 2022	2,697.62
Charge for the year	1,799.01
At 31 August 2023	<u>4,496.63</u>
NET BOOK VALUE	
At 31 August 2023	<u>4,498.41</u>
At 31 August 2022	<u>5,953.42</u>

7 Debtors

	2023	2022
Rent deposit	-	7,500.00
Trade Debtors	2,469.38	6,441.98
Prepayments	1,082.47	1,082.52
	<u>3,551.85</u>	<u>15,024.50</u>

8 Creditors

	2023	2022
Funding fees in advance	-	-
Accruals	720.00	600.00
Trade Creditors	119.70	2,634.30
PAYE/ Pension	3,055.82	4,767.55
Wages payable	-	10,927.04
	<u>3,895.52</u>	<u>18,928.89</u>

9 Independent examiner's fee

	2023	2022
Independent exam	270.00	250.00
Accounts	450.00	350.00
	720.00	600.00

10 Related Parties

There were no related party transactions in the year.

ST MARYS NURSERY, CAMBERLEY

England & Wales - Charity number 1168824

Accounts



Trustees' Annual Report for the period

From	Period start date			To	Period end date		
	Day 1st	Month September	Year 2021		Day 31st	Month August	Year 2022

Section A Reference and administration details

Charity name St Mary's Nursery, Camberley

Other names charity is known by

Registered charity number (if any) 1168824

Charity's principal address

Watchetts Recreation Ground	
Park Road	
Camberley, Surrey	
Postcode	GU15 2SR

Names of the charity trustees who manage the charity

	Trustee name	Office (if any)	Dates acted if not for whole year	Name of person (or body) entitled to appoint trustee (if any)
1	Revd Andrew Knowles	Chair		
2	Kay Rothwell	Secretary		
3	Lucy Clements	Treasurer	Resigned January 2022	
4	Paul Amphlett	Vice Chair		
5	Sue Dunn	Trustee		
6	Revd Anne Mitchell	Trustee		
7	Jo Atkinson	Trustee		
8				
9				
10				

Names of the trustees for the charity, if any, (for example, any custodian trustees)

Name	Dates acted if not for whole year

Names and addresses of advisers (Optional information)

Type of adviser	Name	Address
HR Consultant	Personnel Consultants Ltd	Aspect House, Pattenden Lane, Marden TN12 9QJ
H & S Consultant	Just Safety	Market House, 21 Lenhen Street, Alton Hampshire GU34 1HG

Name of chief executive or names of senior staff members (Optional information)

Mrs Susan Gauntlett – St Mary's Nursery Manager

Description of the charity's trusts

Type of governing document (eg. trust deed, constitution)	CIO – Foundation Registered 18 th August 2016
How the charity is constituted (eg. trust, association, company)	Charitable Incorporated Organisation
Trustee selection methods (eg. appointed by, elected by)	Elected and recommendations from existing Trustees and PCC

Additional governance issues (Optional information)

You **may choose** to include additional information, where relevant, about:

- policies and procedures adopted for the induction and training of trustees;
- the charity's organisational structure and any wider network with which the charity works;
- relationship with any related parties;
- trustees' consideration of major risks and the system and procedures to manage them.

St Mary's Nursery is registered with Ofsted (reg no. EY556342) and is a member of the Early Years Alliance.

The nursery has policies and procedures that are reviewed annually. We have a child protection policy in place and DBS checks are carried out on all staff and trustees in line with the Statutory Requirements of the EYFS.

All trustees give their time voluntarily and do not receive any remuneration or benefits. The trustees meet on bi-monthly the finance officer and the senior leadership team attend the meetings.

The trustees have set up a sub-committee teams who are responsible for different aspects of the nursery. The Chair and Vice Chair are members of this team, minutes are taken at every meeting by the Clerk to the Trustees and circulated to the trustees and leadership team.

Section C

Objectives and activities

Summary of the objects of the charity set out in its governing document

The aim of the nursery is to advance the education and social development of pre-school children by providing a stimulating and secure environment with a Christian ethos in which children are encouraged to learn through child-initiated play.
The charity promotes and delivers access to affordable, flexible and high quality childcare provision.

Summary of the main activities undertaken for the public benefit in relation to these objects (include within this section the statutory declaration that trustees have had regard to the guidance issued by the Charity Commission on public benefit)

Our activities further the public benefit by supporting the needs of the children and families, through promoting the importance of community involvement in childcare.

We work closely with Surrey Heath Family Support Centre, other local nursery settings and the local authorities to promote the wellbeing of our children and their families.

We work in partnership with the local feeder schools to ensure a smooth transition for children when they move from nursery to reception.

We are based in an accessible community setting to ensure that all families are able to benefit from our provision ensuring inclusivity.

We promote the care, safety, education, health and wellbeing of the children in our community enabling them to thrive.

Additional details of objectives and activities (Optional information)

You **may choose** to include further statements, where relevant, about:

- policy on grantmaking;
- policy programme related investment;
- contribution made by volunteers.

Summary of the main achievements of the charity during the year

A new outdoor learning environment 'The Cabin' was erected this was funded by the deprivation funding we receive. The Cabin is a multipurpose space used for small groups, speech and language sessions and target times for the children with additional needs. In addition to this, all the children enjoy stories, board games and quiet activities too.

We continue to support our FEET (Free Early Education for Two's) funded two year olds and EYPP (Early Years Pupil Premium) children by providing the government food vouchers. We also hosted a winter coat exchange where we received donations of child and adult coats for anyone who needed them.

The 'In the Moment Planning' approach is established in our practice. Along with elements of the 'Curiosity Approach' which encourages us to create the 'thinkers & doers' of the future by providing an environment that inspires curiosity. We have taken elements of Reggio Emilia philosophy, which encourages children to take a lead in their learning and Hygge creating a warm and inviting environment for good wellbeing.

The outdoor and indoor environments have evolved by using upcycled items reducing waste.

We have provided charitable sessions for some of our most vulnerable families to support the wellbeing of the children and their families.

In the holidays we supported our families by providing food vouchers, a lending library, free resources via our online system.

We had an increasing number of Special Educational Needs children with a range of needs some with very complex needs to whom we provide 1:1 adult support. A large part of our cohort are FEET funded two year olds and children with English as an additional language. We also have children who are on Child Protection Plans (CPP) or are Children In Need (CIN).

We adapted our environment to support all children's individual needs.

At the end of summer term, we had 27 children successfully transition to school.

The trustees are committed to investing in personal development of all the nursery team:-

- The nursery manager completed the Thrive Licensed Practitioner course. This will provide support in emotional wellbeing and self-regulation to children.
- The Deputy Manager completed the Designated Safeguarding Lead training.
- The Lead Practitioner attended Early Talk Boost training which supports children with social and language development delay as an impact of the pandemic.
- Four staff members have nearly completed the Level 3 Diploma.
- All staff received mentoring and coaching for the introduction of the revised EYFS September 2021.
-

All staff received salary increases from 1st April 2022 due to the national minimum wage increase.

Section E**Financial review****Brief statement of the charity's policy on reserves**

Reserve policy:

To ensure that we hold enough money in our Reserve account to cover statutory redundancy payments, rent for four months and staff wages for four months. We have chosen four months as this would give ample notice period to the parents and Surrey for funding.

• Direct Charitable Expenses	£40000.00
• Indirect Charitable Expenses	£16000.00
• Redundancy	£8000.00
• Repairs and Maintenance	£8000.00
• Total Reserve	£72000.00

Details of any funds materially in deficit**Further financial review details (Optional information)**

You **may choose** to include additional information, where relevant about:

- the charity's principal sources of funds (including any fundraising);
- how expenditure has supported the key objectives of the charity;
- investment policy and objectives including any ethical investment policy adopted.

Funds are obtained through a combination of Government Funding and Session Fees for services provided by the Nursery. There is also a limited amount raised through fundraising which we plough directly into the Nursery. We continue to raise funds for the Nursery outside area.

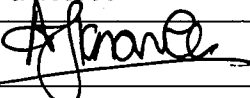
We made excess funds £11,736.64. The excess funds were from restricted funding and will be used towards the continuing garden project.

Section F**Other optional information****Section G****Declaration**

The trustees declare that they have approved the trustees' report above.

Signed on behalf of the charity's trustees

Signature(s)



Full name(s)

Andrew Knowles

Position (eg Secretary, Chair, etc)

Chair

Date

17th April 2023.

Independent Examiner's Report to the Trustees of St Mary's Nursery, Camberley

(Registered Charity no. 1168824)

I report on the accounts of St Mary's Nursery for the year ended 31 August 2022 which are set out on the attached pages in respect of an examination carried out under section 145 of the Charities Act 2011 ("the Act").

Respective responsibilities of the Trustees and the examiner

The charity's trustees consider that an audit is not required for this year under section 144 (2) of the Act and that an independent examination is needed.

It is my responsibility to :

- Examine the accounts under section 145 of the Act;
- Follow the procedures laid down in the General Directions given by the Charity Commissioners under section 145(5) (b) of the Act; and
- State whether particular matters have come to my attention.

Basis of independent examiner's statement

My examination was carried out in accordance with the General Directions given by the Charity Commissioners. An examination includes a review of the accounting records kept by the charity and a comparison of the accounts presented with those records. It also includes consideration of any unusual items or disclosures in the accounts and seeking explanations from you as a trustees concerning any such matters. The procedures undertaken do not provide all the evidence that would be required in an audit and consequently we do not express an audit opinion on the view given by the accounts.

Independent examiner's statement

I have completed my examination. I confirm that no material matters have come to my attention in connection with the examination giving me cause to believe that in any material respect:

1. Accounting records were not kept in respect of the charity as required by section 130 of the Act; or
2. The accounts do not accord with those records; or
3. The accounts do not comply with the applicable requirements concerning the form and content of accounts set out in the Charities (Accounts and Reports) Regulations.

I have no concerns and have come across no other matters in connection with the examination to which attention should be drawn in this report in order to enable a proper understanding of the accounts to be reached.

Kim Swain MA (Oxon) FCA

Date:

Radford & Sergeant Limited
Building 3
Watchmoor Park
Camberley
Surrey
GU15 3YL

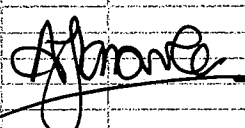
St Mary's Nursery Camberley

STATEMENT OF FINANCIAL ACTIVITIES (INCLUDING INCOME AND EXPENDITURE ACCOUNT) FOR THE PERIOD FROM 1 SEPTEMBER 2021 TO 31 AUGUST 2022

		Unrestricted Funds 2022 £	Restricted Funds 2022 £	Total Funds 2022 £	Total Funds 2021 £
Income from:	Notes				
Donations and legacies	3&4	141,033.11	40,016.78	181,049.89	180,102.33
Charitable activities	3	33,820.65		33,820.65	27,225.00
Other trading activities					753.29
Investments					7.36
Other income	3	597.88		597.88	1,823.72
Total Income		175,451.64	40,016.79	215,468.42	209,911.70
Expenditure on:					
Raising funds					497.58
Charitable activities	5	174,625.00	29,106.78	203,731.78	205,665.81
Total Expenditure		174,625.00	29,106.78	203,731.78	206,163.39
Net income		826.64	10,910.01	11,736.64	3,748.31

St Mary's Nursery Camberley

BALANCE SHEET AS AT 31 AUGUST 2022

	Notes	Total Funds 2022 £	Total Funds 2021 £
Fixed assets			
Tangible assets	6	5,953.42	4,739.64
		5,953.42	4,739.64
Current assets			
Debtors	7	15,024.50	8,889.65
Cash at bank and in hand		122,224.23	101,536.09
Total current assets		137,248.73	110,425.74
Liabilities			
Creditors within one year			
Creditors	8	2,634.31	2,195.18
Accruals	8&9	600.00	-
PAYE/Pension	8	15,694.59	433.59
		18,928.90	2,628.77
Net current assets		118,319.83	107,796.97
Total net assets		124,273.25	112,536.61
Funds of the Charity			
Unrestricted funds		108,086.86	107,260.23
Restricted funds		16,186.39	5,276.38
Total Funds		124,273.25	112,536.61
Approved by the Trustees on			
And signed on its behalf by:			
			17 th April 2023
		Chair - Rev A Knowles	Treasurer - Ms L Clements

6 Tangible fixed assets

	Office equipment
COST	
At 1 September 2021	5,707.05
Additions	2,943.99
Disposals	
At 31 August 2022	<u>8,651.04</u>
DEPRECIATION	
At 1 September 2021	967.41
Charge for the year	1,730.21
At 31 August 2022	<u>2,697.62</u>
NET BOOK VALUE	
At 31 August 2022	<u>5,953.42</u>
At 31 August 2021	<u>4,739.64</u>

7 Debtors

	2022	2021
Rent deposit	7,500.00	7,500.00
Trade Debtors	6,441.98	
Prepayments	1,082.52	1,389.65
	<u>15,024.50</u>	<u>8,889.65</u>

8 Creditors

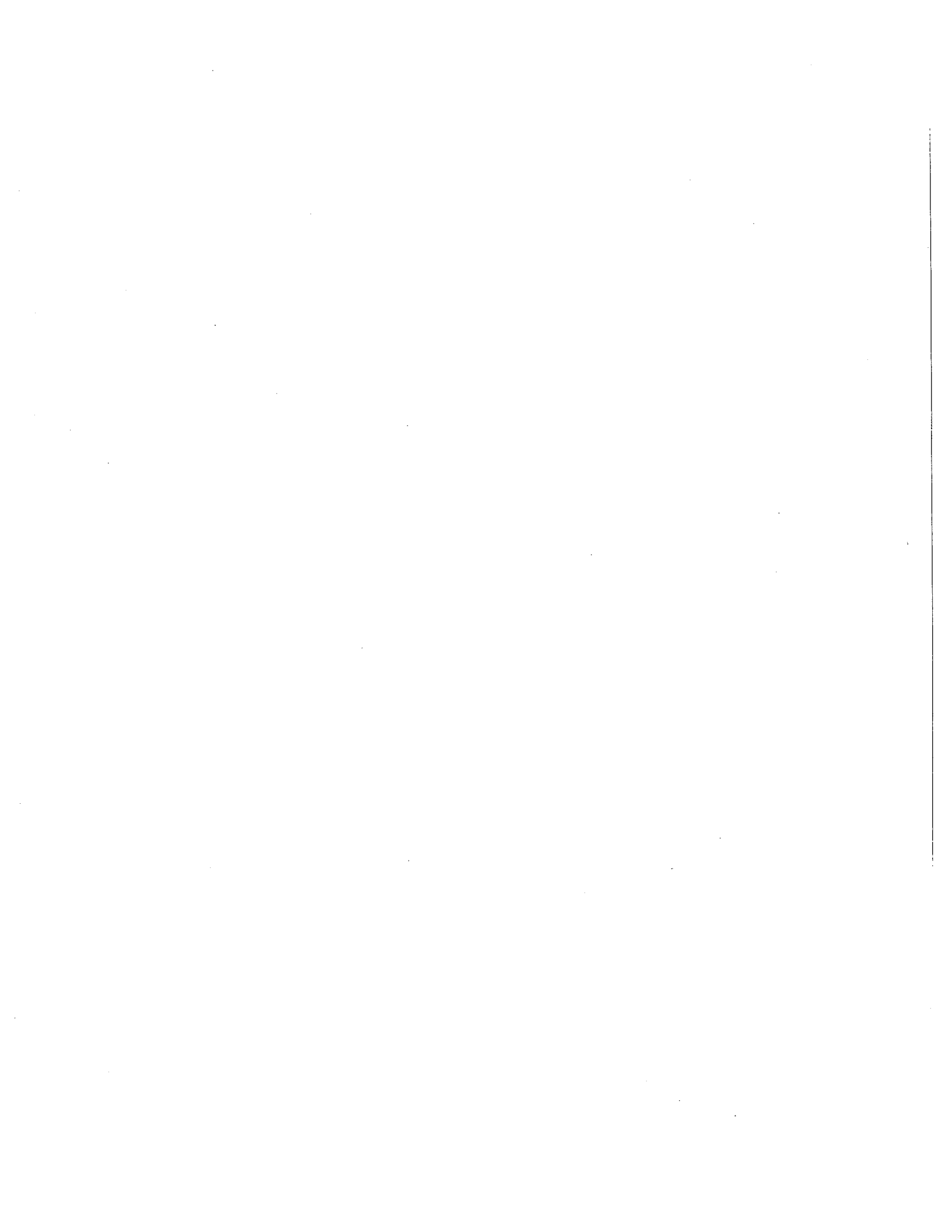
	2022	2021
Funding fees in advance	-	1,521.00
Accruals	600.00	-
Trade Creditors	2,634.30	674.18
PAYE/ Pension	4,767.55	433.59
Wages payable	10,927.04	-
	<u>18,928.89</u>	<u>2,628.77</u>

9 Independent examiner's fee

	2022	2021
Independent examination	250.00	255.00
Accounts preparation	350.00	360.00
	600.00	615.00

10 Related Parties

There were no related party transactions in the year.



Independent Examiner's Report to the Trustees of St Mary's Nursery, Camberley

(Registered Charity no. 1168824)

I report on the accounts of St Mary's Nursery for the year ended 31 August 2022 which are set out on the attached pages in respect of an examination carried out under section 145 of the Charities Act 2011 ("the Act").

Respective responsibilities of the Trustees and the examiner

The charity's trustees consider that an audit is not required for this year under section 144 (2) of the Act and that an independent examination is needed.

It is my responsibility to :

- Examine the accounts under section 145 of the Act;
- Follow the procedures laid down in the General Directions given by the Charity Commissioners under section 145(5) (b) of the Act; and
- State whether particular matters have come to my attention.

Basis of independent examiner's statement

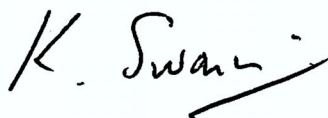
My examination was carried out in accordance with the General Directions given by the Charity Commissioners. An examination includes a review of the accounting records kept by the charity and a comparison of the accounts presented with those records. It also includes consideration of any unusual items or disclosures in the accounts and seeking explanations from you as a trustees concerning any such matters. The procedures undertaken do not provide all the evidence that would be required in an audit and consequently we do not express an audit opinion on the view given by the accounts.

Independent examiner's statement

I have completed my examination. I confirm that no material matters have come to my attention in connection with the examination giving me cause to believe that in any material respect:

1. Accounting records were not kept in respect of the charity as required by section 130 of the Act; or
2. The accounts do not accord with those records; or
3. The accounts do not comply with the applicable requirements concerning the form and content of accounts set out in the Charities (Accounts and Reports) Regulations.

I have no concerns and have come across no other matters in connection with the examination to which attention should be drawn in this report in order to enable a proper understanding of the accounts to be reached.



Kim Swain MA (Oxon) FCA

Date: 25/4/2023

Radford & Sergeant Limited
Building 3
Watchmoor Park
Camberley
Surrey
GU15 3YL

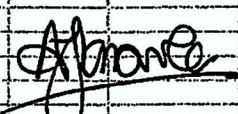
St Mary's Nursery Camberley

STATEMENT OF FINANCIAL ACTIVITIES (INCLUDING INCOME AND EXPENDITURE ACCOUNT) FOR THE PERIOD FROM 1 SEPTEMBER 2021 TO 31 AUGUST 2022

		Unrestricted Funds 2022 £	Restricted Funds 2022 £	Total Funds 2022 £	Total Funds 2021 £
Income from:	Notes				
Donations and legacies	3&4	141,033.11	40,016.78	181,049.89	180,102.33
Charitable activities	3	33,820.65		33,820.65	27,225.00
Other trading activities					753.29
Investments					7.36
Other income	3	597.88		597.88	1,823.72
Total Income		175,451.64	40,016.79	215,468.42	209,911.70
Expenditure on:					
Raising funds					497.58
Charitable activities	5	174,625.00	29,106.78	203,731.78	205,665.81
Total Expenditure		174,625.00	29,106.78	203,731.78	206,163.39
Net income		826.64	10,910.01	11,736.64	3,748.31

St Mary's Nursery Camberley

BALANCE SHEET AS AT 31 AUGUST 2022

		Total Funds 2022 £	Total Funds 2021 £
	Notes		
Fixed assets			
Tangible assets	6	5,953.42	4,739.64
		5,953.42	4,739.64
Current assets			
Debtors	7	15,024.50	8,889.65
Cash at bank and in hand		122,224.23	101,536.09
Total current assets		137,248.73	110,425.74
Liabilities			
Creditors within one year			
Creditors	8	2,634.31	2,195.18
Accruals	8&9	600.00	-
PAYE/Pension	8	15,694.59	433.59
		18,928.90	2,628.77
Net current assets		118,319.83	107,796.97
Total net assets		124,273.25	112,536.61
Funds of the Charity			
Unrestricted funds		108,086.86	107,260.23
Restricted funds		16,186.39	5,276.38
Total Funds		124,273.25	112,536.61
Approved by the Trustees on			
And signed on its behalf by:			
			17 th April 2023
		Chair - Rev A Knowles	Treasurer - Ms L Clements

6 Tangible fixed assets

	Office equipment
COST	
At 1 September 2021	5,707.05
Additions	2,943.99
Disposals	
At 31 August 2022	<u>8,651.04</u>
DEPRECIATION	
At 1 September 2021	967.41
Charge for the year	1,730.21
At 31 August 2022	<u>2,697.62</u>
NET BOOK VALUE	
At 31 August 2022	<u>5,953.42</u>
At 31 August 2021	<u>4,739.64</u>

7 Debtors

	2022	2021
Rent deposit	7,500.00	7,500.00
Trade Debtors	6,441.98	
Prepayments	1,082.52	1,389.65
	<u>15,024.50</u>	<u>8,889.65</u>

8 Creditors

	2022	2021
Funding fees in advance	-	1,521.00
Accruals	600.00	-
Trade Creditors	2,634.30	674.18
PAYE/ Pension	4,767.55	433.59
Wages payable	10,927.04	-
	<u>18,928.89</u>	<u>2,628.77</u>

9 Independent examiner's fee

	2022	2021
Independent examination	250.00	255.00
Accounts preparation	350.00	360.00
	600.00	615.00

10 Related Parties

There were no related party transactions in the year.

ST MARYS NURSERY, CAMBERLEY

England & Wales - Charity number 1168824

Accounts



Trustees' Annual Report for the period

From	Period start date			To	Period end date		
	Day 1st	Month September	Year 2020		Day 31st	Month August	Year 2021

Section A

Reference and administration details

Charity name

Other names charity is known by

Registered charity number (if any)

Charity's principal address

Watchetts Recreation Ground
Park Road
Camberley, Surrey
Postcode
<input type="text" value="GU15 2SR"/>

Names of the charity trustees who manage the charity

	Trustee name	Office (if any)	Dates acted if not for whole year	Name of person (or body) entitled to appoint trustee (if any)
1	Revd Andrew Knowles	Chair		
2	Kay Rothwell	Secretary		
3	Lucy Clements	Treasurer		
4	Paul Amphlett	Vice Chair		
5	Sue Dunn	Trustee		
6	Revd Anne Mitchell	Trustee		
7	Jo Atkinson	Trustee		
8				
9				
10				

Names of the trustees for the charity, if any, (for example, any custodian trustees)

Name	Dates acted if not for whole year

Names and addresses of advisers (Optional information)

Type of adviser	Name	Address
HR Consultant	Personnel Consultants Ltd	Aspect House, Pattenden Lane, Marden TN12 9QJ
H & S Consultant	Just Safety	Market House, 21 Lenhen Street, Alton Hampshire GU34 1HG

Name of chief executive or names of senior staff members (Optional information)

Description of the charity's trusts

Type of governing document (eg. trust deed, constitution)	CIO – Foundation Registered 18 th August 2016
How the charity is constituted (eg. trust, association, company)	Charitable Incorporated Organisation
Trustee selection methods (eg. appointed by, elected by)	Elected and recommendations from existing Trustees and PCC

Additional governance issues (Optional information)

You **may choose** to include additional information, where relevant, about:

- policies and procedures adopted for the induction and training of trustees;
- the charity's organisational structure and any wider network with which the charity works;
- relationship with any related parties;
- trustees' consideration of major risks and the system and procedures to manage them.

St Mary's Nursery is registered with Ofsted (reg no. EY556342) and is a member of the Early Years Alliance.

The nursery has policies and procedures that are reviewed annually. We have a child protection policy in place and DBS checks are carried out on all staff and trustees in line with the Statutory Requirements of the EYFS.

All trustees give their time voluntarily and do not receive any remuneration or benefits. The trustees meet on bi-monthly the finance officer and the senior leadership team attend the meetings.

The trustees have set up a sub-committee teams who are responsible for different aspects of the nursery. The Chair and Vice Chair are members of this team, minutes are taken at every meeting by the Clerk to the Trustees and circulated to the trustees and leadership team.

Section C

Objectives and activities

Summary of the objects of the charity set out in its governing document

The aim of the nursery is to advance the education and social development of pre-school children by providing a stimulating and secure environment with a Christian ethos in which children are encouraged to learn through child-initiated play.

The charity promotes and delivers access to affordable, flexible and high quality childcare provision.

Summary of the main activities undertaken for the public benefit in relation to these objects (include within this section the statutory declaration that trustees have had regard to the guidance issued by the Charity Commission on public benefit)

Our activities further the public benefit by supporting the needs of the children and families, through promoting the importance of community involvement in childcare.

We work closely with Surrey Heath Family Support Centre, other local nursery settings and the local authorities to promote the wellbeing of our children and their families.

We work in partnership with the local feeder schools to ensure a smooth transition for children when they move from nursery to reception.

We are based in an accessible community setting to ensure that all families are able to benefit from our provision ensuring inclusivity.

We promote the care, safety, education, health and wellbeing of the children our community enabling them to thrive.

Additional details of objectives and activities (Optional information)

You **may choose** to include further statements, where relevant, about:

- policy on grantmaking;
- policy programme related investment;
- contribution made by volunteers.

Summary of the main achievements of the charity during the year

In September 2020, following previous lockdown restrictions, all children returned to nursery and previously shielding staff returned to work. We implemented a rigorous risk assessment to prevent the spread of Covid as much as possible.

Unfortunately, due to an outbreak of Coronavirus and staff shortages we closed the nursery on 18th January 2021 for one week. Also for a short period in June 2021 to carry out a deep clean following a Norovirus outbreak. This resulted in us refunding our fee-paying parents.

Despite all of the challenges, we have faced the demand for places increased particularly for two year olds.

The 'In the Moment Planning' approach is established in our practice. Along with elements of the 'Curiosity Approach' which encourages us to create the 'thinkers & doers' of the future by providing an environment that inspires curiosity. We have taken elements of Reggio Emilia philosophy, which encourages children to take a lead in their learning and Hygge creating a warm and inviting environment for good wellbeing.

The outdoor and indoor environments have evolved by using upcycled items reducing waste.

We have provided charitable sessions for some of our most vulnerable families to support the wellbeing of the children and their families.

In the holidays we supported our families by providing food vouchers, a lending library, free resources via our online system and held free 'stay and play' sessions in the church hall for our nursery families and the local community.

We had an increasing number of Special Educational Needs children with a range of needs some with very complex needs to whom we provide 1:1 adult support. A large part of our cohort are FEET funded two year olds and children with English as an additional language. We also have children who are on Child Protection Plans (CPP) or are Children In Need (CIN).

We adapted our environment to support all children's individual needs.

At the end of summer term, we had 26 children successfully transition to school.

The trustees are committed to investing in personal development of all the nursery team:-

- The nursery manager enrolled on a Thrive Licensed Practitioner course. This will provide support in emotional wellbeing and self-regulation to children.
- The Deputy Manager and Behaviour Lead attended Early Talk Boost training this supports children with social and language development delay as an impact of the pandemic.
- All staff received 'In the Moment Planning' and 'Understanding Autism and Behaviours' training.
- Four staff members started the Level 3 Diploma.
- All staff received mentoring and coaching for the introduction of the revised EYFS September 2021.

Section D

Achievements and performance

All staff received salary increases from 1st April 2021 due to the national minimum wage increase.

In October, we held a 'Giving week' where we asked for donations of time, resources and monetary gifts for our outdoor environment. We received donations of all three.

Brief statement of the charity's policy on reserves

Reserve policy:

To ensure that we hold enough money in our Reserve account to cover statutory redundancy payments, rent for four months and staff wages for four months. We have chosen four months as this would give ample notice period to the parents and Surrey for funding.

• Direct Charitable Expenses	£40000.00
• Indirect Charitable Expenses	£16000.00
• Redundancy	£8000.00
• Repairs and Maintenance	£8000.00
• Total Reserve	£72000.00

Details of any funds materially in deficit

Further financial review details (Optional information)

You may choose to include additional information, where relevant about:

- the charity's principal sources of funds (including any fundraising);
- how expenditure has supported the key objectives of the charity;
- investment policy and objectives including any ethical investment policy adopted.

Funds are obtained through a combination of Government Funding and Session Fees for services provided by the Nursery.

There is also a limited amount raised through fundraising which we plough directly into the Nursery. We continue to raise funds for the Nursery outside area.

Due to the closure of the Nursery in June 2021 during the Norovirus outbreak and the Covid-19 Pandemic, we lost income throughout the Spring and Summer Term, as a decision was made to not invoice parents. We were thankful that Surrey CC continued to fund all early years settings which allowed us to pay our staff. We made excess funds £3,748.31. The excess funds were from restricted funding and will be used towards the continuing garden project.

Section F


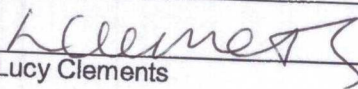
Other optional information

Section G

Declaration

The trustees declare that they have approved the trustees' report above.

Signed on behalf of the charity's trustees

Signature(s)		
Full name(s)	Andrew Knowles	Lucy Clements

Position (eg Secretary, Chair, etc)	Chair	Treasurer
-------------------------------------	-------	-----------

Date 29/04/22

St Mary's Nursery, Camberley
Accounts for the Year Ended 31 August 2021

Statement of Financial Activities

September 2020 to August 2021

Incoming Resources	Un-restricted £	Restricted £	Total £	Previous Year £
Fees	27225.00	0	27225.00	21927.60
Funding	145667.25	34435.08	179877.33	166937.58
Fundraising	753.29	0	753.29	274.21
Interest Received	7.36	0	7.36	111.26
Grants (Covid – Retention scheme and SSP)	863.72	0	863.72	3632.59
Deposits/Admin Fee	720.00	0	720.00	220
Other Income	240	0	240	0
Total Incoming Resources	175476.62	34435.08	209911.70	193103.24
Resources Expended	£			
Direct Charitable Activities	116280.16	35320.07	151600.23	154245.48
Indirect Charitable Activities	43099.58	10966	54065.58	37181.89
Costs of generating voluntary income	497.58	0	497.58	32.84
Total Resources Expended	159877.32	46286.07	206163.39	191460.21
Net Incoming Resources	15599.30	-11850.99	3748.31	1643.80
Transfer between funds	0	0	0	0
Net Movement in Funds	0	0	0	0

Statement of Assets and Liabilities at 31st August 2021

	Un- restricted £	Restricted £	Total £	Previous Year £
Assets				
Rent Deposit	7500.00	0	7500.00	7500
Equipment (see note)	0	4739.64	4739.64	0
Debtors & prepayments	1389.65	0	1389.65	1662
Cash at bank and in hand	100999.35	536.74	101536.09	100241.45
	109889	5276.38	115165.38	109403.45
Liabilities				
Funding/Fees in advance	1521.00	0	1521.00	0
Creditors & Accruals	674.18	0	674.18	615.65
PAYE / Pension	433.59	0	433.59	0
	2628.77		2628.77	
Net Assets	107260.23	5276.38	112536.61	108787.80
Reserves				
Balance brought forward	108787.80	-	108787.80	107144
Surplus/(Deficit) in period	3748.31	-	3748.31	1643.80
Balance Carried Forward	112,536.11	-	112,536.11	108787.80

Approved by the Trustees on:

And signed on its behalf by:

29/04/22.

Chair

Treasurer

Notes to the Accounts

1. Accounting policies

The accounts have been prepared under the historical cost convention on an accruals basis and in accordance with the Charities Act 2011

Depreciation has been provided at the following rates in order to write off the assets over their useful life

Equipment: 33% per annum straight line
Furniture: 20% per annum straight line

2. Fixed Assets

	Un- restricted	Restricted	Total
	£	£	£
Transferred from St Marys Nursery	0	0	0
Disposals	0	0	0
Additions	0	5707.05	0
Cost - carried forward	0	5707.05	5707.05
Depreciation - brought forward		0	
Eliminated on disposal	0	0	0
Charge for year	0	967.41	0
Depreciation - carried forward	0	967.41	967.41
Net Book Value	0	4739.64	4739.64

Bank Charges & Interest	104.40	0	104.40
Depreciation	967.41	0	967.41
Travel Expenses	0	0	0
Miscellaneous	20.07	0	20.07
Total Indirect Charitable Activities	43099.58	10966	54065.58

Independent Examiner's Report to the Trustees of St Mary's Nursery, Camberley

(Registered Charity no. 1168824)

This report is on the accounts of St Mary's Nursery for the year ended 31 August 2021 set out on the attached pages in respect of an examination carried out under section 145 of the Charities Act 2011 ("the Act").

Respective responsibilities of the Trustees and the examiner

The charity's trustees consider that an audit is not required for this year under section 144 (2) of the Act and that an independent examination is needed.

It is our responsibility to:

- Examine the accounts under section 145 of the Act;
- Follow the procedures laid down in the General Directions given by the Charity Commissioners under section 145(5) (b) of the Act; and
- State whether particular matters have come to our attention.

Basis of independent examiner's statement

Our examination was carried out in accordance with the General Directions given by the Charity Commissioners. An examination includes a review of the accounting records kept by the charity and a comparison of the accounts presented with those records. It also includes consideration of any unusual items or disclosures in the accounts and seeking explanations from you as trustees concerning any such matters. The procedures undertaken do not provide all the evidence that would be required in an audit, and consequently we do not express an audit opinion on the view given by the accounts.

Independent examiner's statement

I have completed my examination. I confirm that no material matters have come to my attention in connection with the examination giving me cause to believe that in any material respect:

1. accounting records were not kept in respect of the charity as required by section 130 of the Act; or
2. the accounts do not accord with those records; or
3. the accounts do not comply with the applicable requirements concerning the form and content of accounts set out in the Charities (Accounts and Reports) Regulations .

I have no concerns and have come across no other matters in connection with the examination to which attention should be drawn in this report in order to enable a proper understanding of the accounts to be reached.

Signed by:

Certax Accounting Wokingham

27 Quartz Close

Wokingham, Berkshire

RG41 3TS

Date

Independent Examiner's Report to the Trustees of St Mary's Nursery, Camberley

(Registered Charity no. 1168824)

This report is on the accounts of St Mary's Nursery for the year ended 31 August 2021 set out on the attached pages in respect of an examination carried out under section 145 of the Charities Act 2011 ("the Act").

Respective responsibilities of the Trustees and the examiner

The charity's trustees consider that an audit is not required for this year under section 144 (2) of the Act and that an independent examination is needed.

It is our responsibility to:

- Examine the accounts under section 145 of the Act;
- Follow the procedures laid down in the General Directions given by the Charity Commissioners under section 145(5) (b) of the Act; and
- State whether particular matters have come to our attention.

Basis of independent examiner's statement

Our examination was carried out in accordance with the General Directions given by the Charity Commissioners. An examination includes a review of the accounting records kept by the charity and a comparison of the accounts presented with those records. It also includes consideration of any unusual items or disclosures in the accounts and seeking explanations from you as trustees concerning any such matters. The procedures undertaken do not provide all the evidence that would be required in an audit, and consequently we do not express an audit opinion on the view given by the accounts.

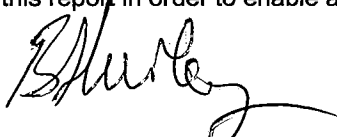
Independent examiner's statement

I have completed my examination. I confirm that no material matters have come to my attention in connection with the examination giving me cause to believe that in any material respect:

1. accounting records were not kept in respect of the charity as required by section 130 of the Act; or
2. the accounts do not accord with those records; or
3. the accounts do not comply with the applicable requirements concerning the form and content of accounts set out in the Charities (Accounts and Reports) Regulations .

I have no concerns and have come across no other matters in connection with the examination to which attention should be drawn in this report in order to enable a proper understanding of the accounts to be reached.

Signed by:



B. HURLEY I.F.A. A.K.A. MIPFA M.C.I.S.A.
Certax Accounting Wokingham

27 Quartz Close

Wokingham, Berkshire

RG41 3TS

Date

11/3/22