

**REPORT OF THE TRUSTEES AND
UNAUDITED FINANCIAL STATEMENTS
FOR THE YEAR ENDED 31 DECEMBER 2023
FOR
DOVER OUTREACH CENTRE**

SHPD Accountants
10 Littlebourne Road
Maidstone
Kent
ME14 5QP

DOVER OUTREACH CENTRE

**CONTENTS OF THE FINANCIAL STATEMENTS
FOR THE YEAR ENDED 31 DECEMBER 2023**

	Page
Report of the Trustees	1 to 2
Independent Examiner's Report	3
Statement of Financial Activities	4 to 5
Balance Sheet	6 to 7
Cash Flow Statement	8
Notes to the Cash Flow Statement	9
Notes to the Financial Statements	10 to 15
Detailed Statement of Financial Activities	16 to 17

DOVER OUTREACH CENTRE
REPORT OF THE TRUSTEES
FOR THE YEAR ENDED 31 DECEMBER 2023

The trustees present their report with the financial statements of the charity for the year ended 31 December 2023. The trustees have adopted the provisions of Accounting and Reporting by Charities: Statement of Recommended Practice applicable to charities preparing their accounts in accordance with the Financial Reporting Standard applicable in the UK and Republic of Ireland (FRS 102) (effective 1 January 2019).

OBJECTIVES AND ACTIVITIES

Objectives and aims

To promote social inclusion for the public benefit by preventing people from becoming socially excluded, relieving the needs of those people who are socially excluded and assisting them to integrate into society.

Please refer to the Chairman's report for a summary of the main activities undertaken in the year.

We confirm that the trustees have had regard to the Charity Commission's guidance on public benefit.

ACHIEVEMENT AND PERFORMANCE

Please refer to the Chairman's report for a summary of the main achievements of the charity in the year.

FINANCIAL REVIEW

Principal funding sources

For details of the charity's principal funding sources, please refer to the Chairman's report following these financial statements.

Reserves policy

The charity's policy is to maintain a reserves level equivalent to at least 6 months of operational expenditure.

FUTURE PLANS

For the charity's future plans, please refer to the Chairman's report following these financial statements.

STRUCTURE, GOVERNANCE AND MANAGEMENT

Governing document

The charity is controlled by its governing document, a deed of trust and constitutes an unincorporated charity.

Recruitment and appointment of new trustees

New trustees are appointed by the existing trustees.

Nominees are asked to prepare a statement of why they want to join the trustee board and what they feel they have to offer it. This is shared with existing trustees for discussion.

Organisational structure

For the charity's organisational structure, please refer to the Chairman's report following these financial statements.

Decision making

The board of trustees takes responsibility for making decisions for the charity.

Induction and training of new trustees

Induction is by meeting with the chair of trustees to receive an overview of the charity, attending trustee meetings, and they are encouraged to read the Charity Commission's guidance on what is involved in being a trustee.

Key management remuneration

For details of the charity's key management remuneration, please refer to the Chairman's report following these financial statements.

Risk management

The trustees have a duty to identify and review the risks to which the charity is exposed and to ensure appropriate controls are in place to provide reasonable assurance against fraud and error.

REFERENCE AND ADMINISTRATIVE DETAILS

Registered Charity number

1168737

Principal address

Victory House
168 Snargate Street
Dover
Kent
CT17 9BZ

DOVER OUTREACH CENTRE
REPORT OF THE TRUSTEES
FOR THE YEAR ENDED 31 DECEMBER 2023

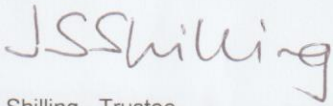
Trustees

J S Shilling
P H Wallace
J Jowett
G May (resigned 22.9.2023)
J E Donaldson (appointed 11.3.2023)
J G Pryse (appointed 11.3.2023)
R A Jones (resigned 12.3.2024)
A Boxall (appointed 9.6.2023)

Independent Examiner

Peter Acott FCCA
SHPD Accountants
10 Littlebourne Road
Maidstone
Kent
ME14 5QP

Approved by order of the board of trustees on 25 June 2024 and signed on its behalf by:



J S Shilling - Trustee

**INDEPENDENT EXAMINER'S REPORT TO THE TRUSTEES OF
DOVER OUTREACH CENTRE**

Independent examiner's report to the trustees of Dover Outreach Centre

I report to the charity trustees on my examination of the accounts of Dover Outreach Centre (the Trust) for the year ended 31 December 2023.

Responsibilities and basis of report

As the charity trustees of the Trust you are responsible for the preparation of the accounts in accordance with the requirements of the Charities Act 2011 ('the Act').

I report in respect of my examination of the Trust's accounts carried out under Section 145 of the Act and in carrying out my examination I have followed all applicable Directions given by the Charity Commission under Section 145(5)(b) of the Act.

Independent examiner's statement

Since your charity's gross income exceeded £250,000 your examiner must be a member of a listed body. I can confirm that I am qualified to undertake the examination because I am a member of the Association of Chartered Certified Accountants, which is one of the listed bodies.

I have completed my examination. I confirm that no material matters have come to my attention in connection with the examination giving me cause to believe that in any material respect:

1. accounting records were not kept in respect of the Trust as required by Section 130 of the Act; or
2. the accounts do not accord with those records; or
3. the accounts do not comply with the applicable requirements concerning the form and content of accounts set out in the Charities (Accounts and Reports) Regulations 2008 other than any requirement that the accounts give a true and fair view which is not a matter considered as part of an independent examination.

I have no concerns and have come across no other matters in connection with the examination to which attention should be drawn in this report in order to enable a proper understanding of the accounts to be reached.



Peter Acott FCCA

SHPD Accountants
10 Littlebourne Road
Maidstone
Kent
ME14 5QP

25 June 2024

DOVER OUTREACH CENTRE
STATEMENT OF FINANCIAL ACTIVITIES
FOR THE YEAR ENDED 31 DECEMBER 2023

	Notes	Unrestricted fund £	Accommodation £	Winter Night Shelter £
INCOME AND ENDOWMENTS FROM				
Donations and legacies	2	124,033	82,418	20,492
Investment income	3	-	342,837	-
Total		124,033	425,255	20,492
EXPENDITURE ON				
Charitable activities	4			
Core fund activities		85,834	220,454	25,245
Oban House		-	74,317	-
Suffolk House		-	63,925	-
Roman Quay		-	87,488	-
Other		33,794	-	-
Total		119,628	446,184	25,245
NET INCOME/(EXPENDITURE)		4,405	(20,929)	(4,753)
Transfers between funds	12	(60)	-	-
Net movement in funds		4,345	(20,929)	(4,753)
RECONCILIATION OF FUNDS				
Total funds brought forward		22,487	141,268	8,197
TOTAL FUNDS CARRIED FORWARD		26,832	120,339	3,444

The notes form part of these financial statements

DOVER OUTREACH CENTRE
STATEMENT OF FINANCIAL ACTIVITIES
FOR THE YEAR ENDED 31 DECEMBER 2023

		Foodbank £	2023 Total funds £	2022 Total funds £
INCOME AND ENDOWMENTS FROM	Notes			
Donations and legacies	2	275,608	502,551	492,563
Investment income	3	-	342,837	199,146
Total		<u>275,608</u>	<u>845,388</u>	<u>691,709</u>
EXPENDITURE ON				
Charitable activities	4			
Core fund activities		62,870	394,403	508,161
Oban House		-	74,317	11,728
Suffolk House		-	63,925	8,556
Roman Quay		-	87,488	-
Other		-	33,794	62,772
Total		<u>62,870</u>	<u>653,927</u>	<u>591,217</u>
NET INCOME		212,738	191,461	100,492
Transfers between funds	12	60	-	-
Net movement in funds		212,798	191,461	100,492
RECONCILIATION OF FUNDS				
Total funds brought forward		-	171,952	71,460
TOTAL FUNDS CARRIED FORWARD		<u><u>212,798</u></u>	<u><u>363,413</u></u>	<u><u>171,952</u></u>

The notes form part of these financial statements

DOVER OUTREACH CENTRE

BALANCE SHEET
31 DECEMBER 2023

	Notes	Unrestricted fund £	Accommodation £	Winter Night Shelter £
FIXED ASSETS				
Investments	9	2	-	-
CURRENT ASSETS				
Debtors	10	734	1,490	-
Cash at bank		29,022	127,388	3,444
		<u>29,756</u>	<u>128,878</u>	<u>3,444</u>
CREDITORS				
Amounts falling due within one year	11	(2,926)	(8,539)	-
NET CURRENT ASSETS		<u>26,830</u>	<u>120,339</u>	<u>3,444</u>
TOTAL ASSETS LESS CURRENT LIABILITIES		<u>26,832</u>	<u>120,339</u>	<u>3,444</u>
NET ASSETS		<u><u>26,832</u></u>	<u><u>120,339</u></u>	<u><u>3,444</u></u>

DOVER OUTREACH CENTRE

BALANCE SHEET - continued
31 DECEMBER 2023

	Notes	Foodbank £	2023 Total funds £	2022 Total funds £
FIXED ASSETS				
Investments	9	-	2	2
CURRENT ASSETS				
Debtors	10	-	2,224	13,000
Cash at bank		212,798	372,652	170,326
		212,798	374,876	183,326
CREDITORS				
Amounts falling due within one year	11	-	(11,465)	(11,376)
NET CURRENT ASSETS		212,798	363,411	171,950
TOTAL ASSETS LESS CURRENT LIABILITIES		212,798	363,413	171,952
NET ASSETS		212,798	363,413	171,952
FUNDS	12			
Unrestricted funds			26,832	22,487
Restricted funds			336,581	149,465
TOTAL FUNDS			363,413	171,952

The financial statements were approved by the Board of Trustees and authorised for issue on 25 June 2024 and were signed on its behalf by:

J S Shilling

J S Shilling - Trustee

P H Wallace - Trustee

P H Wallace

The notes form part of these financial statements

DOVER OUTREACH CENTRE
CASH FLOW STATEMENT
FOR THE YEAR ENDED 31 DECEMBER 2023

	Notes	2023 £	2022 £
Cash flows from operating activities			
Cash generated from operations	1	<u>202,326</u>	<u>110,788</u>
Net cash provided by operating activities		<u>202,326</u>	<u>110,788</u>
Change in cash and cash equivalents in the reporting period		<u>202,326</u>	<u>110,788</u>
Cash and cash equivalents at the beginning of the reporting period		<u>170,326</u>	<u>59,538</u>
Cash and cash equivalents at the end of the reporting period		<u><u>372,652</u></u>	<u><u>170,326</u></u>

The notes form part of these financial statements

DOVER OUTREACH CENTRE

NOTES TO THE CASH FLOW STATEMENT
FOR THE YEAR ENDED 31 DECEMBER 2023

1. RECONCILIATION OF NET INCOME TO NET CASH FLOW FROM OPERATING ACTIVITIES

	2023 £	2022 £
Net income for the reporting period (as per the Statement of Financial Activities)	191,461	100,492
Adjustments for:		
Decrease in debtors	10,776	-
Increase in creditors	89	10,296
Net cash provided by operations	<u>202,326</u>	<u>110,788</u>

2. ANALYSIS OF CHANGES IN NET FUNDS

	At 1.1.23 £	Cash flow £	At 31.12.23 £
Net cash			
Cash at bank	<u>170,326</u>	<u>202,326</u>	<u>372,652</u>
	<u>170,326</u>	<u>202,326</u>	<u>372,652</u>
Total	<u>170,326</u>	<u>202,326</u>	<u>372,652</u>

DOVER OUTREACH CENTRE

NOTES TO THE FINANCIAL STATEMENTS FOR THE YEAR ENDED 31 DECEMBER 2023

1. ACCOUNTING POLICIES

Basis of preparing the financial statements

The financial statements of the charity, which is a public benefit entity under FRS 102, have been prepared in accordance with the Charities SORP (FRS 102) 'Accounting and Reporting by Charities: Statement of Recommended Practice applicable to charities preparing their accounts in accordance with the Financial Reporting Standard applicable in the UK and Republic of Ireland (FRS 102) (effective 1 January 2019)', Financial Reporting Standard 102 'The Financial Reporting Standard applicable in the UK and Republic of Ireland' and the Charities Act 2011. The financial statements have been prepared under the historical cost convention, with the exception of investments which are included at market value.

Income

All income is recognised in the Statement of Financial Activities once the charity has entitlement to the funds, it is probable that the income will be received and the amount can be measured reliably.

Expenditure

Liabilities are recognised as expenditure as soon as there is a legal or constructive obligation committing the charity to that expenditure, it is probable that a transfer of economic benefits will be required in settlement and the amount of the obligation can be measured reliably. Expenditure is accounted for on an accruals basis and has been classified under headings that aggregate all cost related to the category. Where costs cannot be directly attributed to particular headings they have been allocated to activities on a basis consistent with the use of resources.

Taxation

The charity is exempt from tax on its charitable activities.

Fund accounting

Unrestricted funds can be used in accordance with the charitable objectives at the discretion of the trustees.

Restricted funds can only be used for particular restricted purposes within the objects of the charity. Restrictions arise when specified by the donor or when funds are raised for particular restricted purposes.

Further explanation of the nature and purpose of each fund is included in the notes to the financial statements.

2. DONATIONS AND LEGACIES

	2023	2022
	£	£
Donations	52,098	42,573
Grants	259,556	448,954
Sundry receipts	1,029	1,036
Foodbank initial funds	156,930	-
Recharged building costs	32,938	-
	<u>502,551</u>	<u>492,563</u>

DOVER OUTREACH CENTRE

**NOTES TO THE FINANCIAL STATEMENTS - continued
FOR THE YEAR ENDED 31 DECEMBER 2023**

2. DONATIONS AND LEGACIES - continued

Grants received, included in the above, are as follows:

	2023	2022
	£	£
Dover District Council	136,258	205,836
Charities Trust	-	10,000
Age UK South	-	1,000
SEK Wellbeing Fund	-	9,998
Dover Town Council	-	4,550
Kent Community Foundation	8,500	5,000
Spacehive Limited	-	19,334
Jowett	-	9,000
Quinn Estates	-	2,500
DLUHC	46,310	155,465
Ellen Gertrude Sneller Small	-	6,273
The Philip and Connie Phillips Foundation	-	9,998
Help the Homeless	-	5,000
Rotary	-	5,000
Lord Barnaby	3,000	-
RV Colman Trust	10,000	-
The Trussell Trust	39,488	-
Louise Allen Trust	16,000	-
	259,556	448,954

3. INVESTMENT INCOME

	2023	2022
	£	£
Rents received (VH)	210,934	171,094
Rents received (OH, SH & RQ)	131,903	28,052
	342,837	199,146

4. CHARITABLE ACTIVITIES COSTS

	Direct Costs £	Support costs (see note 5) £	Totals £
Core fund activities	392,148	2,255	394,403
Oban House	73,717	600	74,317
Suffolk House	63,525	400	63,925
Roman Quay	80,288	7,200	87,488
	609,678	10,455	620,133

DOVER OUTREACH CENTRE

**NOTES TO THE FINANCIAL STATEMENTS - continued
FOR THE YEAR ENDED 31 DECEMBER 2023**

5. SUPPORT COSTS

	Finance £	Information technology £	Governance costs £	Totals £
Core fund activities	331	1,124	800	2,255
Oban House	-	-	600	600
Suffolk House	-	-	400	400
Roman Quay	-	-	7,200	7,200
	<u>331</u>	<u>1,124</u>	<u>9,000</u>	<u>10,455</u>

6. TRUSTEES' REMUNERATION AND BENEFITS

There were no trustees' remuneration or other benefits for the year ended 31 December 2023 nor for the year ended 31 December 2022.

Trustees' expenses

There were no trustees' expenses paid for the year ended 31 December 2023 nor for the year ended 31 December 2022.

7. STAFF COSTS

	2023 £	2022 £
Wages and salaries	209,036	174,001
	<u>209,036</u>	<u>174,001</u>

The average monthly number of employees during the year was as follows:

	2023 12	2022 10
All employees	<u>12</u>	<u>10</u>

No employees received emoluments in excess of £60,000.

8. COMPARATIVES FOR THE STATEMENT OF FINANCIAL ACTIVITIES

	Unrestricted fund £	Accommodation £	Winter Night Shelter £	Foodbank £	Total funds £
INCOME AND ENDOWMENTS FROM					
Donations and legacies	294,631	180,804	17,128	-	492,563
Investment income	-	199,146	-	-	199,146
Total	<u>294,631</u>	<u>379,950</u>	<u>17,128</u>	<u>-</u>	<u>691,709</u>
EXPENDITURE ON Charitable activities					
Core fund activities	208,056	244,247	55,858	-	508,161
Oban House	-	11,728	-	-	11,728
Suffolk House	-	8,556	-	-	8,556
Other	62,772	-	-	-	62,772
Total	<u>270,828</u>	<u>264,531</u>	<u>55,858</u>	<u>-</u>	<u>591,217</u>
NET INCOME/(EXPENDITURE)	23,803	115,419	(38,730)	-	100,492
Transfers between funds	(8,000)	-	8,000	-	-
Net movement in funds	<u>15,803</u>	<u>115,419</u>	<u>(30,730)</u>	<u>-</u>	<u>100,492</u>

DOVER OUTREACH CENTRE

NOTES TO THE FINANCIAL STATEMENTS - continued
FOR THE YEAR ENDED 31 DECEMBER 2023

8. COMPARATIVES FOR THE STATEMENT OF FINANCIAL ACTIVITIES - continued

	Unrestricted fund £	Accommodation £	Winter Night Shelter £	Foodbank £	Total funds £
RECONCILIATION OF FUNDS					
Total funds brought forward	6,684	25,849	38,927	-	71,460
	<hr/>	<hr/>	<hr/>	<hr/>	<hr/>
TOTAL FUNDS CARRIED FORWARD					
	22,487	141,268	8,197	-	171,952
	<hr/>	<hr/>	<hr/>	<hr/>	<hr/>

9. FIXED ASSET INVESTMENTS

MARKET VALUE

At 1 January 2023 and 31 December 2023

Shares in
group
undertakings
£2**NET BOOK VALUE**

At 31 December 2023

2

At 31 December 2022

2

There were no investment assets outside the UK.

10. DEBTORS: AMOUNTS FALLING DUE WITHIN ONE YEAR

	2023 £	2022 £
Prepayments	<u>2,224</u>	<u>13,000</u>

11. CREDITORS: AMOUNTS FALLING DUE WITHIN ONE YEAR

	2023 £	2022 £
Trade creditors	3,905	6,555
Taxation and social security	733	3,019
Other creditors	6,827	1,802
	<u>11,465</u>	<u>11,376</u>

12. MOVEMENT IN FUNDS

	At 1.1.23 £	Net movement in funds £	Transfers between funds £	At 31.12.23 £
Unrestricted funds				
General fund	22,487	4,405	(60)	26,832
Restricted funds				
Accommodation	141,268	(20,929)	-	120,339
Winter Night Shelter	8,197	(4,753)	-	3,444
Foodbank	-	212,738	60	212,798
	<hr/>	<hr/>	<hr/>	<hr/>
	149,465	187,056	60	336,581
	<hr/>	<hr/>	<hr/>	<hr/>
TOTAL FUNDS	<u>171,952</u>	<u>191,461</u>	<u>-</u>	<u>363,413</u>

DOVER OUTREACH CENTRE

NOTES TO THE FINANCIAL STATEMENTS - continued
FOR THE YEAR ENDED 31 DECEMBER 2023

12. MOVEMENT IN FUNDS - continued

Net movement in funds, included in the above are as follows:

	Incoming resources £	Resources expended £	Movement in funds £
Unrestricted funds			
General fund	124,033	(119,628)	4,405
Restricted funds			
Accommodation	425,255	(446,184)	(20,929)
Winter Night Shelter	20,492	(25,245)	(4,753)
Foodbank	275,608	(62,870)	212,738
	<u>721,355</u>	<u>(534,299)</u>	<u>187,056</u>
TOTAL FUNDS	<u>845,388</u>	<u>(653,927)</u>	<u>191,461</u>

Comparatives for movement in funds

	At 1.1.22 £	Net movement in funds £	Transfers between funds £	At 31.12.22 £
Unrestricted funds				
General fund	6,684	23,803	(8,000)	22,487
Restricted funds				
Accommodation	25,849	115,419	-	141,268
Winter Night Shelter	38,927	(38,730)	8,000	8,197
	<u>64,776</u>	<u>76,689</u>	<u>8,000</u>	<u>149,465</u>
TOTAL FUNDS	<u>71,460</u>	<u>100,492</u>	<u>-</u>	<u>171,952</u>

Comparative net movement in funds, included in the above are as follows:

	Incoming resources £	Resources expended £	Movement in funds £
Unrestricted funds			
General fund	294,631	(270,828)	23,803
Restricted funds			
Accommodation	379,950	(264,531)	115,419
Winter Night Shelter	17,128	(55,858)	(38,730)
	<u>397,078</u>	<u>(320,389)</u>	<u>76,689</u>
TOTAL FUNDS	<u>691,709</u>	<u>(591,217)</u>	<u>100,492</u>

DOVER OUTREACH CENTRE

**NOTES TO THE FINANCIAL STATEMENTS - continued
FOR THE YEAR ENDED 31 DECEMBER 2023**

12. MOVEMENT IN FUNDS - continued

A current year 12 months and prior year 12 months combined position is as follows:

	At 1.1.22 £	Net movement in funds £	Transfers between funds £	At 31.12.23 £
Unrestricted funds				
General fund	6,684	28,208	(8,060)	26,832
Restricted funds				
Accommodation	25,849	94,490	-	120,339
Winter Night Shelter	38,927	(43,483)	8,000	3,444
Foodbank	-	212,738	60	212,798
	<u>64,776</u>	<u>263,745</u>	<u>8,060</u>	<u>336,581</u>
TOTAL FUNDS	<u>71,460</u>	<u>291,953</u>	<u>-</u>	<u>363,413</u>

A current year 12 months and prior year 12 months combined net movement in funds, included in the above are as follows:

	Incoming resources £	Resources expended £	Movement in funds £
Unrestricted funds			
General fund	418,664	(390,456)	28,208
Restricted funds			
Accommodation	805,205	(710,715)	94,490
Winter Night Shelter	37,620	(81,103)	(43,483)
Foodbank	275,608	(62,870)	212,738
	<u>1,118,433</u>	<u>(854,688)</u>	<u>263,745</u>
TOTAL FUNDS	<u>1,537,097</u>	<u>(1,245,144)</u>	<u>291,953</u>

13. RELATED PARTY DISCLOSURES

Sunrise Cafe (Dover) Ltd

A subsidiary of the charity.

During the year £6,844 (2022 - £3,390) was charged to Sunrise Cafe (Dover) Ltd regarding rent and utilities.

DOVER OUTREACH CENTRE
DETAILED STATEMENT OF FINANCIAL ACTIVITIES
FOR THE YEAR ENDED 31 DECEMBER 2023

	2023 £	2022 £
INCOME AND ENDOWMENTS		
Donations and legacies		
Donations	52,098	42,573
Grants	259,556	448,954
Sundry receipts	1,029	1,036
Foodbank initial funds	156,930	-
Recharged building costs	32,938	-
	<hr/> 502,551	<hr/> 492,563
Investment income		
Rents received (VH)	210,934	171,094
Rents received (OH, SH & RQ)	131,903	28,052
	<hr/> 342,837	<hr/> 199,146
Total incoming resources	<hr/> 845,388	<hr/> 691,709
EXPENDITURE		
Charitable activities		
Wages, NI & pension	209,036	174,001
Rent, rates and water	144,695	101,224
Insurance	8,697	6,736
Advertising and website	351	-
Sundries	19	3,718
General expenses	2,943	1,733
Accommodation costs	-	1,300
Move on costs	5,710	9,855
Minor equipment	12,966	15,354
Food	5,552	7,320
Drop-in centre supplies	15,061	6,834
Other costs	3,870	5,361
CEO services	19,347	18,165
Centre manager's services	15,991	11,894
Drop-in centre manager's services	-	1,196
Other subcontracted labour	10,443	12,151
Property repairs	127,186	117,445
FB Equipment and supplies	27,811	-
	<hr/> 609,678	<hr/> 494,287
Other		
Subsidiary donations - Sunrise Cafe	27,794	62,772
Grants paid and transferred	6,000	-
	<hr/> 33,794	<hr/> 62,772
Support costs		
Finance		
Bank charges	331	199
Information technology		
Repairs and renewals	1,124	5,860

This page does not form part of the statutory financial statements

DOVER OUTREACH CENTRE
DETAILED STATEMENT OF FINANCIAL ACTIVITIES
FOR THE YEAR ENDED 31 DECEMBER 2023

	2023 £	2022 £
Information technology		
Governance costs		
Accountancy fees	1,800	1,800
Legal and professional fees	7,200	26,299
	<u>9,000</u>	<u>28,099</u>
Total resources expended	<u>653,927</u>	<u>591,217</u>
Net income	<u><u>191,461</u></u>	<u><u>100,492</u></u>



The Dover Outreach Centre

Chairman's Report 2023

The past year has built on the strengths of Dover Outreach Centre (DOC). We have expanded our housing portfolio allowing us a range of accommodation options, brought Dover Foodbank under our umbrella, and we continue to look for projects that fit with our ethos.

Sunrise Cafe

Our cafe continued to do well throughout the year, and we had 4 members of staff by the end of 2023. Additional support is undertaken by a rota of willing and invaluable volunteers, including students from local schools and colleges. Changes were made to our tab system to try to reduce the debt incurred by a number of our customers, and as a result of the cost of living crisis we felt that we needed to increase our prices mid-year. Our external catering service continues and this remains an important revenue stream for the Cafe.

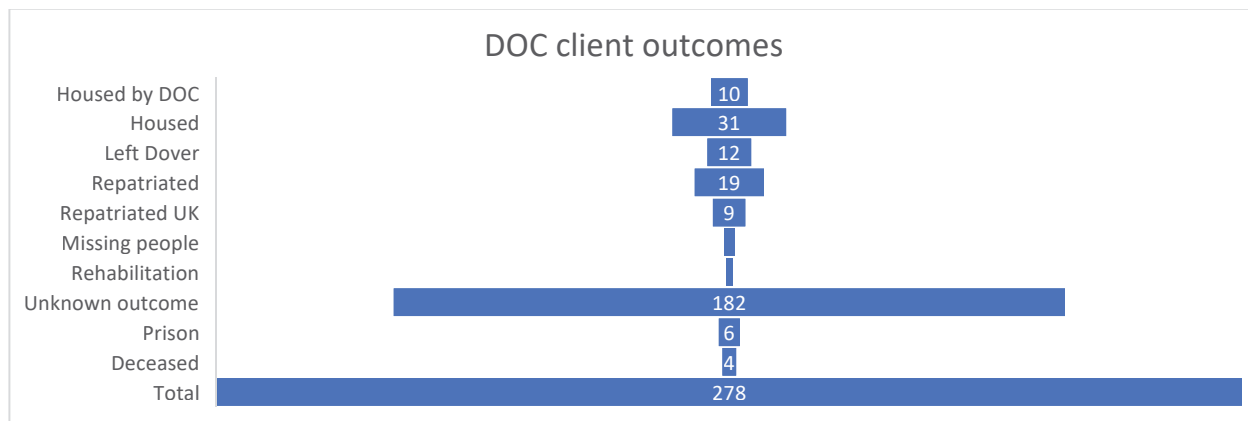
Ukrainian Reception Centre and Warm Hub

The Ukrainian Reception Centre was no longer needed in 2023, although Ukrainian families were still welcomed to support sessions at the Sunrise Cafe one afternoon a week. The warm hub operated through the coldest months of the year.

Outreach Centre

The Centre continues to work with a range of individuals, including locals, regional and national clients along with foreign nationals from the EU and beyond, and numbers range from 20 to 30 people a day. We have supported wherever we can, helped many into accommodation and moved some home to other parts of the UK, and repatriated others to their home nations (see chart). Our Centre manager offers consistency to the centre, and she works with a mix of staff and volunteers. Collaboration with the local authority and other agencies continues to be important to us and runs smoothly.

Our centre manager spent a lot of time working with foreign nationals wanting to return home. The amount of work required to do this became unmanageable, so we created a role for a Resettlement Support Worker. Our new colleague began in July 2023, funded by the Dover District Council Rough Sleeper Initiative, and by the end of the year had made a big difference to those seeking her help. Every effort will be made to renew the funding for this role.



Victory House supported accommodation

We had another good year where we were able to provide an adequate amount of support to our residents. In 2023, we saw 5 residents move on. 2 went into our move on accommodation, 2 into council property, and 1 into private rented accommodation.

Oban House

Oban House operated at full capacity throughout 2023. We moved in tenants who had lower support needs than those at Victory House, and it serves as a good “move on” property when Victory House tenants are ready.

Suffolk House, our base for the Winter Night shelter

The winter night shelter saw its second year at Suffolk House. Local church members provided evening meals every day, and residents were able to have breakfast at the Sunrise Cafe. Dover Outreach Centre entered into an agreement with Dover District Council to provide emergency temporary accommodation to be used to house homeless people in the Dover area when Suffolk House was not being used for the Winter Night Shelter. This was in operation from March to the end of November 2023.

Roman Quay

Our proposal to offer the flat above the pub to vulnerable women, and The Beehive, run by The Vineyard Church, to take on an under-lease to offer a pre-loved, quality women’s clothing boutique and cafe on the ground floor was endorsed. We moved tenants into the 4 bed flat in October and The Beehive opened in November.

The Bridge

This is a meeting that takes place at the Outreach Centre on a Sunday afternoon. The aim is to explore life and faith and several people have been invited to share their faith stories. In 2023 it ran an Alpha course with 6 regularly attending.

Dover Foodbank (DFB)

The trustees of DFB were finding it difficult to support the organisation, and we were approached in the spring to ask if we would consider bringing under the umbrella of Dover Outreach Centre. The key financial commitments for DFB were staff costs (3 part time employees) and rent/utilities on storage facilities. They were also looking at renting a town centre property to act as a hub which would replace their distribution centres run from 3 churches. The DOC and DFB trustees met with the Trussell Trust and the move was endorsed. This was completed in July, and shortly after, the lease in a new building was signed. The DFB trustee then joined our trustee board.

Staffing

At the end of 2023 we employed 17 people. Noel Beamish offers his services as our CEO, but is not considered a member of staff. The breakdown of staff by role is shown below.





The Dover Outreach Centre

Key management remuneration (at the end of 2023)

Centre manager (part time)	£1,550 a month
Cafe manager	£2,020 a month
Support workers (two)	£2,205 a month each
Resettlement support worker	£1,228 a month

Financial position

At the end of the year there was a healthy combined bank balance of £372,651 across Dover Outreach Centre. This does not include the Sunrise Cafe which is set up as a limited company under the umbrella of Dover Outreach Centre and reports separately.

Principal Funding Sources

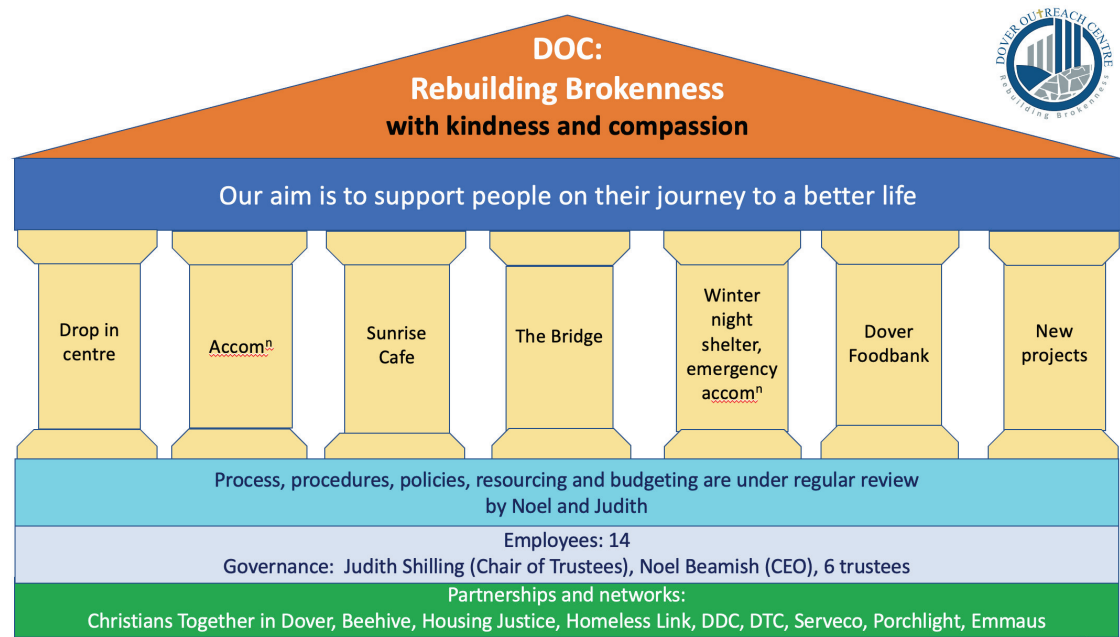
Source	Project	Amount
Department for levelling up	Revenue grant towards the costs for Suffolk House	£46,310
Dover District Council	Contribution to outreach and support worker roles	£30,000
	Household support fund	£94,000
	Ukraine Reception and Support grant	£12,000
Housing Benefit	Enhanced Housing Benefit for our supported accommodation at Victory House, Oban House, Roman Quay	£300,000

Trustees

At the end of 2023 we had six trustees (including the chair), each of whom align with one of our initiatives. They are responsible for meeting with Noel Beamish on a regular basis to discuss progress and issues, and we hold four full team meetings a year. The board of trustees takes responsibility for making decisions for DOC.

J S Shilling		
P H Wallace		
J Jowett		
J E Donaldson	Appointed 11.3.2023	
J G Pryse	Appointed 11.3.2023	
A Boxall	Appointed 9.6.2023	
G May		resigned 22.9.2023

Organisational structure



Future plans

Our key task moving forward is to consider the next steps for our accommodation portfolio, and who we should be seeking to accommodate. This also raises the issue of how we manage our properties, and we will be actively seeking an additional managerial role for this.

Judith Shilling
Chair of Trustees, June 2024