

MILKANDLEAD ART GALLERY

TRUSTEES ANNUAL REPORT

For Fiscal Year ending
31 October 2020

Charity Number
1167857





MILKANDLEAD

ART GALLERY

CONTACTS

Francesco Carvelli, *Trustee*

fc@milkandlead.com

+44 (0) 7985 170 942

Administrative Office:

45 Alkham Road, London N16 7AA

www.milkandlead.com

info@milkandlead.com

MILKANDLEAD ART GALLERY

Report of the trustees for the year ending 31 October 2020

BACKGROUND

MILKandLEAD Art Gallery is a Charitable Incorporated Organisation registered in England with the Charity Commission. The Charity is governed by its Board of Trustees, chaired by Michael Hawkins and supported by advisors and volunteers. The organisation defines new concepts of art through an accurate research made on the most current experimental and innovative international cultural movements. The charity strives to offer the public something revolutionary and prominent as a result of its unique artistic programme.

HISTORY

MILKandLEAD Art Gallery was founded in 2009 by Francesco Vertucci and Jasmine Balder. Since its inception the gallery has been recognised as an independent platform that reflects and implements local, national and international power of the arts - with special emphasis on multicultural and gender equal communities - by acting as a place of exposure to the latest art movements and emergent new talents.

OBJECTIVES

The objectives of the gallery are the advancement of education in - and the promotion of - the arts for the public benefit by the provision of arts facilities, public performances and exhibitions and the encouragement of high standards of art which increase the public's knowledge, understanding and appreciation of the arts.



wire-bug | Zelimir Baric, 2008

MILKANDLEAD ART GALLERY

MILKandLEAD Art Gallery embraces broad and diverse audiences, promotes digital growth and engagement, creates and supports local, national and international partnerships, encourages learning and research, aiming to offer experiences that are beneficial to staff and audience.

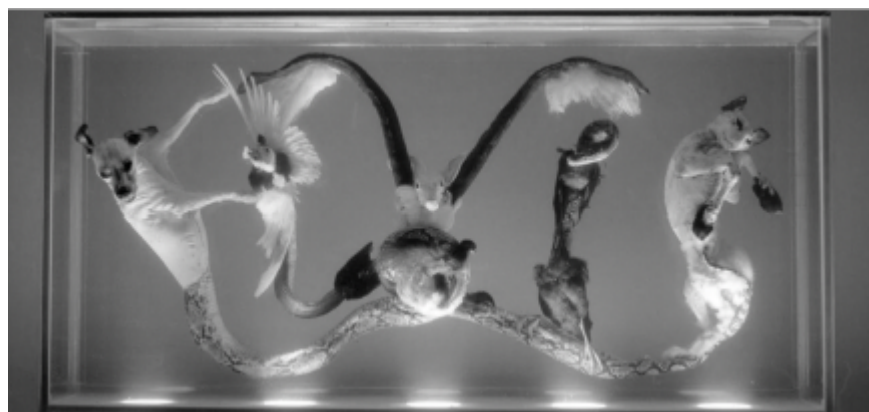
The gallery organises exhibitions and helps expose works of art while also giving viewers a structure within which to enjoy and analyse the aesthetic experience. Sound, visuals, and other senses are all brought to the edge of familiar experience with the work that the gallery exhibits and curates.

The charity aims to:

- Develop and grow a dynamic **community of members**
- Campaign and advocate **emerging artists** that challenge mainstream culture
- Inspire and develop a **workforce** able to deliver the programme activities
- Develop a **measurement culture** to guide continuous improvement in the organisation

In order to convey and transmit its core values:

- Encourage **high standards of art**
- Deliver **inclusivity, diversity** and **equality**
- Work **ethically** and **collaboratively**
- Develop **independency** by being **self-reliant, authentic, humble**
- Lead **change by example**



Untitled | Iris Schieferstein, 2013

MILKANDLEAD ART GALLERY

MILKandLEAD Art Gallery vision is sustained by a transdisciplinary approach for inclusive, participatory and socially engaged programme activities and events.

The indispensable operating methods of quality control - analysing concepts with the necessary and sufficient conditions of revolutionary and pioneering - is fundamental to evaluate and give a valid exposure to outstanding works of art.

Our showcase stimulate emotively and appreciatively the public, delivering acknowledgement of our vision.



Untitled | Cliff Wallace, 2013

The **Programme Activities** OF MILKandLEAD Art Gallery are based on four pillars:



EXHIBITION

Exhibitions
Acquisitions & Collection

Three Seasonal



ACADEMY

Educational Programme

Seasonal



SIGN PRIZE

Pioneering Arts Award

Triennial



DELIQUIM

Sound Art Triennial
Exhibition

Triennial



EXHIBITION

SOLO SHOW

The Solo show is the display of a series of selected artworks from one artist. It sets context and concept while emphasising and giving to the public the inputs and developmental needs to get involved with our interrelated activities.

GENDER EQUAL & DIVERSITY

Every season the gallery hosts special exhibition/events, including educational activities and initiatives to promote Equal Gender. Artists, performers, speakers, LGBTQ+ community, and public will demonstrate and protect human rights, mobilising gender, ethnic, political and cultural unions.

The charity supports HIV/AIDS international campaigns with partners, local communities, followers, members and participants.

PERFORMANCE ART

MILKandLEAD support research and practice for the creative development of performing arts. We accept proposals that showcase ground-breaking, existential topics selected by our board of curators following focus areas as a guideline.

SOUND ART

Every season the gallery showcases, helps and promotes the development of art of sound, supporting music creators, sound designers, sound selectors, labels, and promoters.

A selected series of sound performances from a variety of different styles, sound producers and selectors will emphasise and influence the atmosphere of the exhibition and the way of perceiving the experience every month.

EDUCATIONAL

Our transdisciplinary and complementary educational programme (Academy) consists of a unique learning context that offers an extensive acknowledgement of the gallery activities from and beyond other disciplines. The aim is encouraging individuals to engage with art, culture and technology. These events are run by highly skilled artists, scientists, art professionals, teachers and creative experts. The high standards and the overall learning experience sets the Academy apart from other organisations including universities, art schools and colleges.

AUCTION

The auction is a unique seasonal fundraising activity with the aim to rise funds from the sale of the selected art works from the Solo and Special Exhibitions. The activity and bidding period starts from the opening day with the announcement of the specific artworks, online bidding via MILKandLEAD website and will end with a auction night last Thursday of each closing season.

ACQUISITION & COLLECTION

MILKandLEAD Art Gallery organises art activities within a complementary four pillars structure that include and aims to acquire and collect an array of pioneering art pieces, presenting, developing and sharing it as widely as possible. Artists and donors are invited and welcome to donate works of art (published and unpublished) for the development of MILKandLEAD Collection for public interest. Donations are subject to guidelines.

The free entry public Collection of pioneering art will add innovative values to the art community, increasing the cultural heritage alongside the contemporary and modern art offered by other organisations.



ACADEMY

EDUCATIONAL PROGRAMME

Academy is the plan of MILKandLEAD to support the community by increasing public knowledge through education. The advanced programme is tailor-made and integrated to each exhibition/season. Speakers at Academy are qualified professionals, artists, and academics. The articulated educational department offers artistic inter-cultural approaches to teaching and learning across a wide range of educational styles.



SIGN PRIZE

PIONEERING ARTS AWARD

Sign prize seeks to highlight the significance of the role of the awarded works by recognising them as icons of innovative, pioneering art. The award constitutes an intervention, based on community participation, and a celebration that thoroughly emphasises the collaborations with partners and institutions, while improving and supporting artistic and cultural excellence. The Sign Prize supports new concepts of art by helping, campaigning and sustaining emerging artists through bursaries, grants, and residencies.



DELIQUIUM

SOUND ART TRIENNIAL EXHIBITION

International, innovative and experimental sound art exhibition staged every three years. DELIQUIUM showcases the trans-national scope of the most vibrant and thrilling sectors of underground culture. It is a unique chance to see the evolution of sound; a melting pot where ideas, concepts and music design technology combine to give the audience a revelation that is a sign of the sound of the now.

D.E.P.R. (Dark Erotic Poetry Room) INSTALLATION

The concept of the Dark Erotic Poetry Room at DELIQUIUM is based purely on the imaginative power of poetry decontextualised in a darkened space. The installation aims to create a space where the loss of identity provoked by the suppression of the sense of sight causes the physical body to surrender completely to poetry. When hearing takes over the other senses, the participant is projected onto an imaginary world. Once the spectator agrees to participate and step over the threshold of the D.E.P.R. he/she will reset all the senses at the same level and the poetry will create a unique journey.

MILKANDLEAD ART GALLERY

PAST ACTIVITIES | ARTIST LIST

22nd October 2009 – 1st December 2009

Vincenzo Spagnuolo

3rd December – 1st May 2009

Alessia Cocca

1st April – 1st June 2010

Emmanuele De Ruvo

1st July – 1st August 2010

Zelimir Barić

3rd February 2011 – 3rd April 2011

Iris Schieferstein

7th April- 2011

Verdiana Raw

21st April 2011

Vera Bremerton

25th March 2011

TRANS4LEBEN | Ernesto Tomasini & Jose Macabra

23rd April 2011

Patricide

Return for St George's Day Telepathic Triptych

10th June 2011

Jon John | The Two Of Us

Eaten By Children

MILKandLEAD at Modern Panic

Hosted and Curated by James Elphick

22nd October 2011

MILKandLEAD II Anniversary at Wheler Street Building

May Kinens (live) | Codex Europa

Pardon My Early Exit Hope You Survive

Somnambulist | The Red Virgin Mary

13th December 2012- 1st March 2013

Valentina Bardazzi and Mirco Magnani

15th- 16th December 2012

Lee Adams | *The Sacred Conspiracy* (Performance)

7th March- 7th April 2013

Kurt Grüng

10th March 2013

BROOD | *11 hours Soundscape*

23rd March 2013

The Red Virgin Mary (Performance)

Pol'N Centre

Curated by Hard Kollision, Nantes, France

2nd May – 2nd July 2013

Cliff Wallace

5th May 2013

Author & Punisher

19th, 20th, 21st February 2015

DELIQUIUM | **Sound Art Triennial**

Dark Movements Exhibition

Sound Artists:

- FM Einheit (DE)
- Shelley Parker (UK)
- Iscariot, G. Tomasini, E. Macabra, J. (UK)
- Am Not (UK)
- Eaten By Children (UK)
- Luke Jordan (UK)
- Skat Injector (UK)
- Now Wash Your Hands (UK)
- Brood (UK)
- Dressmaker (UK)
- The Murder Act (UK)
- The Anxiety Of Love (UK)
- Petra Flurr (DE)
- The Frozen Autumn (ITA)
- Vertigo Neogama (DE)
- Underkonstruktion (UK)
- Deutsch Nepal (UK)
- Imminent (BEL)
- Dr.Nexus (DE)
- Treha Sektori (FR)
- FZV (UK)
- Ewa Justka (UK)

Sound Selectors:

- Codex Europa (UK)
- Prisce De Cockroach (UK)
- Dj Fe (UK)
- A/Ona (DE)
- Age Of Concern (UK)
- Choronzon (UK)
- Cavey Nik (UK)
- Dahc Dermur VIII (UK)
- Inept (UK) Anxt! (UK)
- Black Death 1334 (UK)

Installations:

- Kurt Grüng (UK)
- Dehn Sora (FR)
- Cementimental (UK)

Deliquium Visual Art Competition

Winners:

- Giuseppe Gallo (UK)
- Kristina Gentvainyte (BEL)
- Martin Bladh (SWE)

DEPR | Dark Erotic Poetry Room

Winners:

- Heidi Fanning
- Roberta Francis
- Rowan Swords

DEPR | Dark Erotic Poetry Room

Selected Poems:

- Akasha Queen of the Damned
- Ernesto Sarenzale
- Gabriel Tenczer
- Kate Adams
- Sonia Secchi
- Star Jewel Knight
- Charlotte Northall
- Danni Kushner
- Jenny Matthew
- Shae Vulgaris
- Nardine Sanderson

8th, 9th, 10th, February 2018

DELIQUIUM | Sound Art Triennial

Sound Artists:

- Anji Cheung (UK)
- Raxil4 (UK)
- Jose Macabra (UK)
- IOM (UK)
- James Shearman (UK) ➤ Vomir (FR)
- Pascal Savy (UK)
- Dr. Nexus (DE)
- Nordvargr (SWE)
- Noise Ladder (LT)
- 2nd Gen (UK)
- Colossloth (UK)
- Satori (UK)
- Khost (UK)
- Merkaba Macabre (UK)
- Gertrud Stein (UK)
- Nosztalgia Direktiva (HU)
- Lower Synth Department (DE)
- Sequential (UK)
- She Spread Sorrow (ITA)
- Horologium (PL)
- Gnaw Their Tongues (NL)
- Italian Books (UK)
- MDS51 (DE)
- Ah Cama-Sotz (BEL)
- Ryan Jordan (UK)
- Volsent (UK)

Sound Selectors:

- Udo Wiessmann | Winterka"lte (DE) ➤ Codex Europa (UK)
- Anxt! (UK)
- Ahsan | HTBX (UK)
- Raro | HTBX (UK)
- Ireen Amnes (UK)
- Cra5hed (UK)
- Dj Blackdeath 1334 (UK)

Visual projections:

- They Said They Saw

Installations:

- Izzy Nakhla (UK)
- Of Mirth And Misery (UK)
- Neo Fung (UK)
- Ronch (UK)

DEPR | Dark Erotic Poetry Room:

- Damien De Coene
- Electric Elizabeth
- Alex Wealands
- KV (Kate) Adams
- Dean Rhetoric
- Graham Buchan
- Winter James



BROOD | DELIQUIUM - Sound Art Triennial, 2015

MILKANDLEAD ART GALLERY

TEAM MEMBERS, VOLUNTEERS, COLLABORATORS

Orsi Hodu – Volunteer/ Copy Editing, 2017/Present
Raffaella Mandriota – Assistant Director 2012/15
Giorgio Scappaticcio – UI Designer/Gallery Assistant, 2012/15
Marica Greco – UI Designer, 2009/11
Paul Hegarty – Sound Art Curator, Deliquium, 2018
Alexei Monroe – Sound Theorist / Press, Deliquium, 2018
Charles Poulet – Pre-Production and Director of Sound, Deliquium, 2015
Jerome Bisgambiglia – Sound Engineer, 2013/15
Domenico Di Tommaso – Sound Engineer, Deliquium 2015/18
Claus Fuss – Sound Engineer Assistant, Deliquium, 2015/18
Juscius Eddie – Sound Engineer Assistant, Deliquium, 2018
Georgios Kphtikos – Sound Engineer Assistant, Deliquium, 2015/18
Zoe Plumb – D.E.P.R. installation poetry mix, Deliquium, 2018
Edmund Francis – Installation Manager, Deliquium, 2018
Mak Ma Yuan – Electrowerkz Venue Director, Deliquium, 2015/18
Yolandi – Electrowerkz Venue Manager, Deliquium, 2015/18
Lee Benjamin – Costume, Trans4Leben & Brood, MILKandLEAD, 2011/15
Miguel Domingo Redondo – Creative Video Projections, MILKandLEAD, 2011/Present Original Copy – Video Projections TRANS4LEBEN, MILKandLEAD, 2011
Martin Delaney – Sound Expert, Author & Punisher Interview, 2013
Antonio Carola – Video/Documentary BetaVita, MILKandLEAD, 2013/Present
Daniel Jurado – Video/Documentary BetaVita, Deliquium, 2018
Cyril Bérard – Video/Documentary BetaVita, 2013/15
Thomas Coiffier – Video/Documentary BetaVita, The Red Virgin Mary, 2013
Francisco Gomez De Villaboa – Photographer
Taran Regil – Photographer, Iris Schieferstein
Karolina Urbaniack – Photographer
Alice Panascia – Photographer, Cliff Wallace, 2013
Magda Bondos – Photographer, MementoMori & The Red Virgin Mary (Berlin, DE), 2013 Pan Optikum – Photographer, Jon John | The Two Of Us
Stefano Venturi – Photographer, Jon John | The Two Of Us
Guillaume Kerhervé – Photographer, The Red Virgin Mary, (Nantes, FR)
Faure Perez – Bespoke & Creative Essay, 2016
Andrea Giammaria – Producer Deliquium, 2015
Domenico Mandriota – Line Producer Deliquium, 2015
Raffaele Medievalnoize – Volunteer Collaborator, Author & Punisher, 2013
Emanuele Pizzorno – Volunteer, 2010
Louise Zette – Volunteer, 2015
Giacomo Benedetti – Volunteer, 2012/13
Lourdes Acera – Volunteer, 2010/Present
Delphine Allard – Volunteer 2015/18
Antonella Mingolla – Volunteer 2018/Present
Enrica Vigenzone Toniolo – Volunteer Collaborator MILKandLEAD Anniversary II, 2011
Asun Valero – Volunteer Collaborator MILKandLEAD Anniversary II, 2011

MILKANDLEAD ART GALLERY

STAFF

Trustees

Jasmine Balder
Francesco Vertucci
Michaele Hawkins
Violetta Wojcik
Marcello De Mello
Francesco Carvelli

Officers

Chair - Michaele Hawkins
Treasurer - Violetta Wojcik
Artistic Director - Francesco Vertucci
Managing Director - Francesco Carvelli

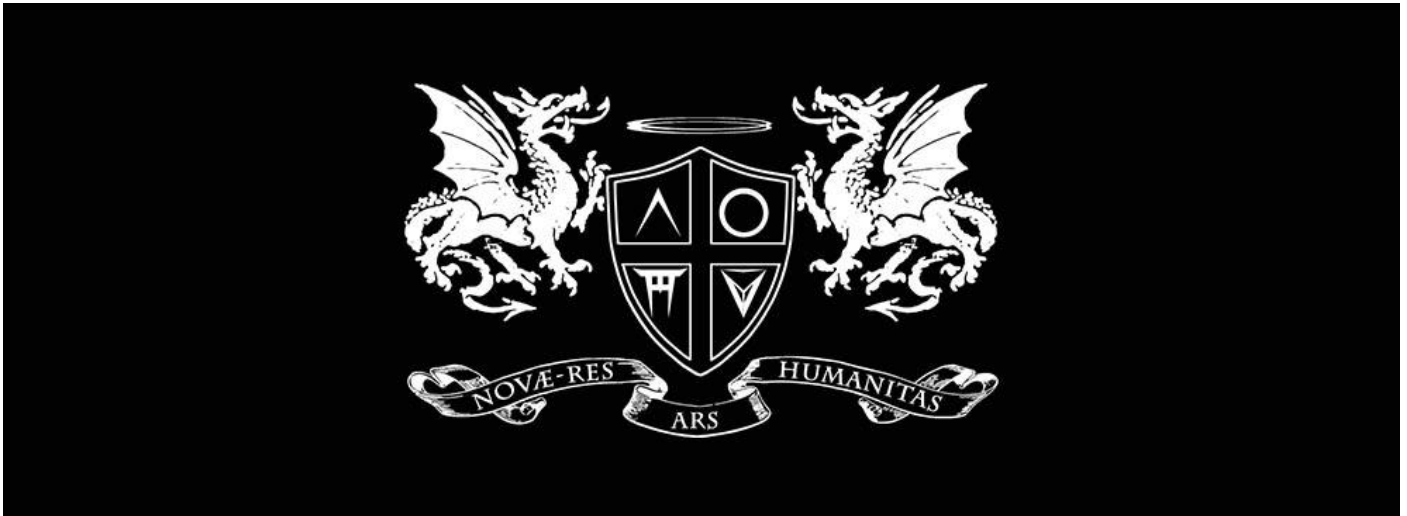
Committees

C01 - Governance
C02 - HR, Staff & Volunteers
C03 - Fundraising, Partnership & Endorsement
C04 - Campaigns, Marketing & Communication
C05 - Policies, Terms & Procedures
C06 - External Relations
C07 - Evaluation & Measurement
C08 - Sign Prize Jury
C09 - Selection Panel
C10 - Auctions

Advisors

Nick Howe, *NatWest Commercial & Private Banking*
Deramore Hutchcroft, Architect at *Squire & partners*
Stephen Roberts Millard, Architect at *MWH Global Inc.*
Keith Arrowsmith, *Partner Counterculture Partnership LLP*
Mike Mitchell, *Managing Director at UKGlobal*
Jo Sealy, Business Adviser at *Enterprise Steps*
Suresh Rajendram, *Manager at Leadenhall Financial Management Limited*

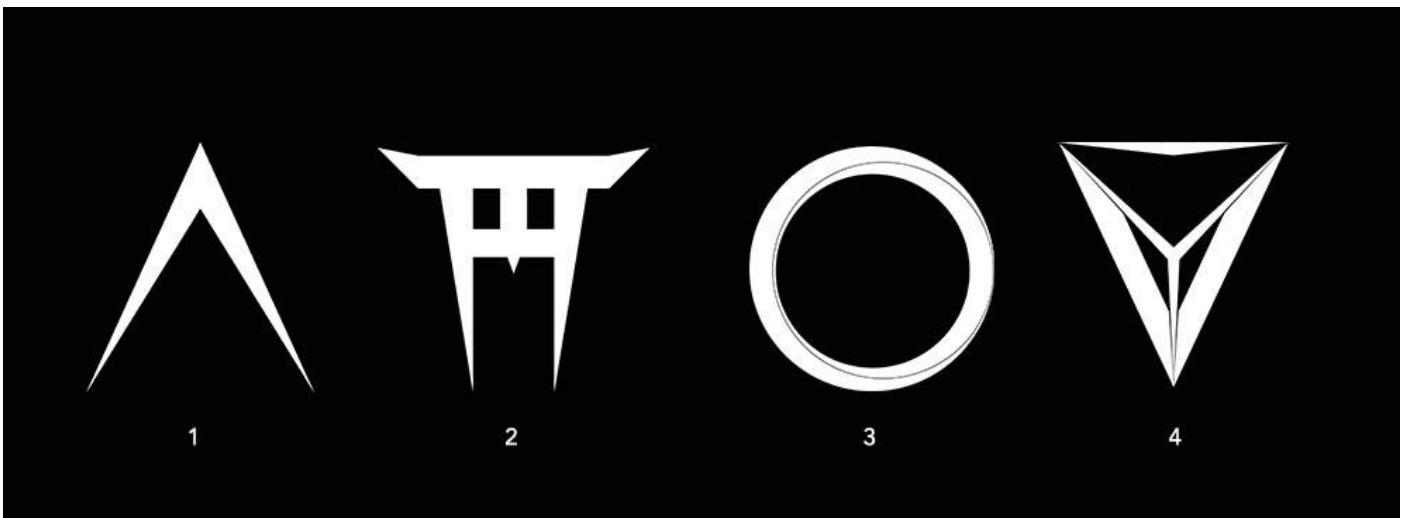
BRANDING



1.Aura - Saturn ring (Hazy Ring) representing the Aura of Art mentioned by Walter Benjamin in *The Work of Art in the Age of Mechanical Reproduction*, 1936.

2.Dragons - Denote the protection of great beauty (aesthetics), being guarded by dragons from German heraldry.

3.Motto - The motto *Novae Res, Ars, Humanitas* from Latin translates Innovation, Art & Culture.



1.Stylised Compasses - Symbols of willingness, ability, and genius.

2.Inspired by Torii Gate - From Mundane to Sacred.

3.Stylised Circular Shape - Representing: Hazy Ring / Aura W. Benjamin, / Circle Of Fifths.

4.Derived from the Dragon Eye - Symbol, represents Good (Aesthetics) and Evil in Karl Rosenkranz *Aesthetics of Ugliness*, 1853.

MILKANDLEAD ART GALLERY

Summary of Activities

Board Meetings

2018 (03) - Friday, 14 September 2018, 18:30 [London, E1]

2018 (02) - Friday, 25 May 2018, 18:00 [London, E1]

2018 (01) - Thursday, 6 March 2018, 18:00 [London, E1]

DELIQUIUM Sound Art Triennial (D2018)

8th, 9th, 10th, February 2018

Total Attendees	850
Attendees on the 'Guest List'	240
Guests at the event	50
Partners & Associates at the event	15
Staff & Volunteers at the event	20
Survey feedback responses	49
Artwork Projects submitted	20
DEPR Poems submitted	25



CHARITY COMMISSION
FOR ENGLAND AND WALES

Charity Name MILKANDLEAD ART GALLERY	No (if any) 1167857
--	-------------------------------

Receipts and payments accounts

CC16a

For the period from	Period start date 01 Nov 2019	To	Period end date 31 Oct 2020
------------------------	----------------------------------	----	--------------------------------

Section A Receipts and payments

	Unrestricted funds to the nearest £	Restricted funds to the nearest £	Endowment funds to the nearest £	Total funds to the nearest £	Last year to the nearest £
A1 Receipts					
Donations	-	-	-	-	-
		-	-	-	-
		-	-	-	-
	-	-	-	-	-
	-	-	-	-	-
	-	-	-	-	-
	-	-	-	-	-
	-	-	-	-	-
Sub total (Gross income for AR)	-	-	-	-	-
A2 Asset and investment sales, (see table).					
		-	-	-	
	-	-	-	-	-
Sub total	-	-	-	-	-
Total receipts	-	-	-	-	-
A3 Payments					
Administration (Bills, Stationery, Software,	-	-	-	-	-
Marketing & Subscriptions (Online & Printing)	-	-	-	-	-
	-	-	-	-	-

	-	-	-	-	-
	-	-	-	-	-
	-	-	-	-	-
	-	-	-	-	-
	-	-	-	-	-
	-	-	-	-	-
Sub total	-	-	-	-	-

A4 Asset and investment purchases, (see table)					
Loan repaid to external funds	-	-	-	-	
	-	-	-	-	
Sub total	-	-	-	-	

Total payments	-	-	-	-	-
-----------------------	---	---	---	---	---

Net of receipts/(payments)	-	-	-	-	-
A5 Transfers between funds	-	-	-	-	-
A6 Cash funds last year end	2,890	-	-	2,890	-
Cash funds this year end	2,890	-	-	2,890	-

Section B Statement of assets and liabilities at the end of the period

Categories	Details	Unrestricted funds to nearest £	Restricted funds to nearest £	Endowment funds to nearest £
B1 Cash funds		-	-	-
		-	-	-
		-	-	-
	Total cash funds	-	-	-
	(agree balances with receipts and payments account(s))	Agreement Error	OK	OK

		Unrestricted funds to nearest £	Restricted funds to nearest £	Endowment funds to nearest £
B2 Other monetary assets	Details			
		-	-	-
		-	-	-
		-	-	-
		-	-	-
		-	-	-
		-	-	-

		Fund to which asset belongs	Cost (optional)	Current value (optional)
B3 Investment assets	Details			
			-	-
			-	-
			-	-
			-	-
			-	-

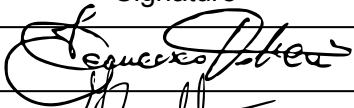

		Fund to which asset belongs	Cost (optional)	Current value (optional)
B4 Assets retained for the charity's own use	Details			
			-	-
			-	-
			-	-
			-	-
			-	-
			-	-
			-	-

		-	-
		-	-

B5 Liabilities

Details	Fund to which liability relates	Amount due (optional)	When due (optional)
		-	
		-	
		-	
		-	
		-	

Signed by one or two trustees on behalf of all the trustees

Signature	Print Name	Date of approval
	Francesco Vertucci	24 August 2021
	Francesco Carvelli	24 August 2021