

# THE WATERCRESS WAY

England & Wales · Charity number 1167675

## Details

---

**Status** Registered

**Legal form** CIO

**Registered** 2016-06-16

**Register** [View on the Charity Commission register](#)

## Contact

---

**Address** 72 Lovedon Lane  
Kings Worthy  
Winchester  
Hampshire  
SO23 7NS

**Phone** 07798936908

**Email** [info@thewatercressway.org.uk](mailto:info@thewatercressway.org.uk)

**Website** [www.thewatercressway.org.uk](http://www.thewatercressway.org.uk)

## Activities

---

**Objects:** TO PROMOTE AND ENCOURAGE FOR THE PUBLIC BENEFIT THE DEVELOPMENT IN THE COMMUNITY OF, AND THE PROVISION OF, SAFE ROUTES, PATHS AND FACILITIES FOR WALKING, CYCLING AND HORSE RIDING, BASED ON THE ORIGINAL ROUTES OF THE DISUSED RAILWAY LINES BETWEEN SUTTON SCOTNEY AND ALRESFORD VIA KINGS WORTHY IN HAMPSHIRE AND KNOWN AS THE WATERCRESS WAY, AND TO UNDERTAKE AND CARRY ON PROJECTS AND ACTIVITIES OF A CHARITABLE NATURE WHICH WILL ASSIST IN PROMOTING RECREATION AND THE PROTECTION OF THE ENVIRONMENT.

**Activities:** To create an easily accessible, non-motorised circular route linking the communities of Alresford, Kings Worthy and Sutton Scotney via disused railways and existing Drove Roads. Ensure that all sections of the route are well maintained and appropriately accessible. Develop the route for all ages, and all levels of mobility, and communicate the benefits of the route.

## Classification

- **How:** Provides Human Resources, Provides Services, Provides Advocacy/advice/information, Sponsors Or Undertakes Research, Other Charitable Activities
- **What:** Education/training, Disability, Environment/conservation/heritage, Recreation
- **Who:** People With Disabilities, Other Charities Or Voluntary Bodies, The General Public/mankind

## Geography

- **Area of benefit:** LOCAL
- Hampshire

## Finances

Period end	Income	Expenditure	Assets	Employees
2025-04-05	£2,107	£4,261	-	-
2024-04-05	£1,493	£5,900	-	-
2023-04-05	£3,639	£2,955	-	-
2022-04-05	£4,245	£2,007	-	-
2021-04-05	£1,149	£1,914	-	-

## Trustees

Name	Role	Appointed
<b>MRS JACQUELINE PORTER</b>	Chair	2015-10-13
Barry Preedy		2024-08-27
CLIVE RONALD COOK		2016-02-29
Chris Brunskill		2020-10-06
Emma Banks		2020-10-06
MR MIKE COLLIS		2015-10-13
Stephen David Jeffery		2020-05-07
TONY ROLFE LANGRIDGE		2016-05-23

**THE WATERCRESS WAY**

England & Wales - Charity number 1167675

---

# Accounts

---



# Annual Report of The Watercress Way 24-25

I would like to thank our Trustees and volunteers for all their work this year. The real progress we are making is due to their commitment to this charity.



This year, our work has taken a slightly different direction.

**We have concentrated on experiences and expansion, with a touch of expectation.**



**Emma had secured a grant from the Watercress and Winterbournes Project**, and this was the final year of our work to bring new people to understand and experience the unique qualities of the Itchen chalk streams and encourage participants to volunteer. It enabled us to try out new events and improve our publicity material for the future.

The Bat walk proved popular and is being repeated as part of our 'annual offer' now.

Photography sessions and bird walks are popular and with the persistence of Mike, we installed QR codes at 15 points along the route to capture the birdsong likely to be heard there.

**The annual Dawn Chorus walk** led by Trustee Clive and volunteer Mike remains popular, but now includes an added dimension: how to use the 'Merlin' app so that participants can expand their knowledge at other times too.



**Chris, our webmaster has made changes to the website** so that

payments can be made, and we now use the sum up system to take payments as well as 'Give as you live' and Eventbrite to book events. This has improved our opportunities to receive paid income and we are using this to sell our merchandise.

**Barry, our new Treasurer was recruited at the last Annual Meeting.**

He has been instrumental in the banking process too. We now have many more recipients of our regular mailings as we continue to collect 'Friends of the Way' locally and further afield.



**We published the first edition of our new Guide Book**

Kim had started the process when she was a Trustee in 2021, and after several false starts, it was the hard work of Clive that brought this to fruition.

Stephen took the photographs in this beautifully illustrated guide to the route.

It was a real pleasure to share a book gifting with Kim and Gordon Thoday of Hellards who kindly sponsored the first publishing.



**Events are a key way to expand public awareness.**

Stephen's close links with the Watercress Line has enabled better links between the two organisations, and we have held stalls at Watercress Line events.

Tony, Mike, Stephen, Chris, Emma and her daughter have been stalwarts with me at a number of shows, festivals and fetes. Thank you!

**In this year, we agreed that a focus of our work must be to claim more metres of the disused and currently private line for public use.**

Tony's work responding to planning applications has proved successful and we were delighted that a planning permission in Martyr Worthy has resulted in a planning condition for a further 500m of expansion. Our

thanks to the SDNP and HCC who supported this.



**The ecology of forgotten lines is complicated,** so the

challenge is moving from a planning condition to a open footpath! Our clear aim is to enhance the ecology of the line, not destroy it. We are grateful to all those who help us in this way.

Some habitats join overhead, but in many cases, each side of the path is an ecological area in itself. The difference in habitat between the two lines, the DSNR and the Watercress Line is marked because of the orientation- one north/south and the other east/west.

**The Watercress Way year is cut into two halves:** September to end February is conservation work: cutting back vegetation to allow new growth whilst protecting habitats. Citizen science & education events happen all year round, but from March to August we cannot destroy habitats, so we record species, and introduce the public to the ecology, heritage and health-giving benefits of the route.

**We have used the evidence of public interest in use of the disused lines to talk again with other landowners on the route.** One landowner, Itchen Abbas Parish Council is actively working with us on a new scheme for their recreation ground at Couch Green. It is enabling a new 'access for all' path from Couch Green to the line. Progress is slower than hoped but the plans are now in place, and the work will be done professionally as there is a lot of earth to move on a site in the National Park. More will be reported next year!

**Last but not least, we can now say 'As seen on TV'!**

After an initial expression of interest in early March, and Jackie's replies back and forth with them for several weeks, Margherita Taylor, and the Countryfile team came to film in March 2025.

With Mike as our trustee star, we had a few minutes on Countryfile which has about 4 million viewers. Many people who came to talk to us at the Watercress Festival had seen trustees Mike and Tony with volunteers Chris and Jim on the programme: the interest in our charity has truly expanded!





**The Watercress Way**  
**Registered Charity Number 1167675**  
**For the year ended 5th April 2024**

	Notes	2024 £	£	2023 £	£
<b>Income and Expenditure account</b>					
<b>Income</b>					
Donations - general		607.45		465.25	
Donations - restricted	1	700.00		2551.17	
Calendar sales		185.41		598.44	
Other income - Eventbrite bird watching		-		24.40	
			1492.86		3639.26
<b>Expenditure</b>					
Restricted project expenditure (Note 3)		3909.50		1362.04	
Calendar costs		153.00		405.60	
IOW Expenditure		-			
Administrative costs		383.30		307.30	
Insurance		376.57		296.73	
Maintenance		409.50		90.00	
Training		175.00		-	
Tool stock write down		493.28		493.00	
			5900.15		2954.67
Net expenditure/ income			-4407.29		684.59
<b>Balance Sheet at 5th April 2024</b>					
<b>Assets</b>					
Debtors			-		120.80
Deposit for benches (restricted)			-		500.00
Stock of Tools	2		-		493.28
<b>Cash at bank</b>					
General funds		1692.29		3842.66	
Restricted funds		7027.78		8170.62	
			8720.07		12013.28
<b>Liabilities</b>					
Creditors		-	-	-	-
<b>Net Assets</b>			<b>8720.07</b>		<b>13127.36</b>
<b>Accumulated Fund</b>					
General fund brought forward		2758.48		384.76	
Restricted fund brought forward	3	10368.88		12058.01	
			13127.36		12442.77
Movement in year - General fund		-1066.19		1873.72	
Movement in year - Restricted fund	3	-3341.10		-1189.13	
			-4407.29		684.59
General fund carried forward		1692.29		2758.48	
Restricted fund carried forward	3	7027.78		10368.88	
			8720.07		13127.36

**Approved by the trustees of The Watercress Way on the .....2024**

Jackie Porter - Chair

Julie Fullstone - Treasurer

**The Watercress Way**  
**Registered Charity Number 1167675**  
**For the year ended 5th April 2024**

**Notes to the accounts**

**1. Restricted grants**

These grants can only be used for the purpose specified on the grant application and for which the grant is made.

**2. Equipment**

The trust has a stock of maintenance equipment which is shown in the accounts at cost. The stock comprises the following individual items:

	£
Loppers	47.94
High pruners	25.98
Pruning saw	32.90
Brush cutter and blades	658.46
Brush cutters (2)	1700.00
Less: write down for wear and tear	-2465.28
	<u>£0.00</u>

**3. Restricted grants received and applied in the year**

	Brought Forward	Transfer	Received	Applied	Carried Forward
	£		£	£	£
<b>Hampshire County Council</b>					
Leaflets	-		700.00	130.00	570.00
<b>Boomtown</b>					
Disabled access study/work	800.00				800.00
<b>Rotary Club of Winchester</b>					
Disabled access study	158.00				158.00
<b>Rotary Club of Alresford</b>					
Memorial benches	4,000.00			2,062.47	1,937.53
<b>Hellards</b>					
Pocket Guide book	500.00				500.00
<b>Sutton Scotney Bridge</b>					
Bridge Gates	2,551.17			1,232.53	1,318.64
<b>Winchester City Council</b>					
Posts	275.00			275.00	-
<b>Isle of Wight</b>					
	2,084.71			341.10	1,743.61
	<u>10368.88</u>		<u>700.00</u>	<u>4041.10</u>	<u>7027.78</u>

**The Watercress Way  
Financial Statements  
For the year ended 5th April 2024**

**THE WATERCRESS WAY**

England & Wales - Charity number 1167675

---

# Accounts

---

# The Watercress Way

Charity 1167675

## Annual Report 2023-2024

AGM: 11 July 2024 at  
The Bush Inn, Ovington

Chairman: Jackie Porter



The activities that are undertaken by the trustees on behalf of the Charity are varied, and I'd like to thank all trustees for their participation this year; and especially for using their own skills in the roles they have undertaken. The public appreciate your efforts!



In May 2023 we had a stand at the Watercress Festival. Thanks to Brigid and Stephen and other trustees who talked to over 300 of the public on the day.

We used our Rotary legacy grant funding to install the first four new seats and are currently finalising the practical aspects of the Birdsong Trail, using roundels and QR

codes at various venues around the route, including on the seats.

To inform the public about the sounds they hear, these roundels will provide direct links to the song of birds we have heard near those sites.

Thank you to Chris Brunskill, Clive Cook, and Mike Collis for their skills on this project.

We had a generous grant from Hellards to assist in publishing a book of Watercress Way Walks. This has been a longer project than expected, but we hope to launch it on the Hellards stand at the Alresford Show later this year.

Clive Cook has led on this work, with help from other trustees.



The Watercress and Winterbourne project has been popular with many people signing up for walks and talks, covering Badgers, Birds, photography (mainly in the rain,) and a Heritage Walk . We are anticipating an Evening with Bats later this summer! Thank you to Emma

Banks and Stephen Jeffery for organising and hosting these walks, and Mike for helping with the bird identification walk at the last minute!



Our D2D day is in its 7<sup>th</sup> year, after 2 missed during Covid. Dawn to Dusk Day 2024 proved a challenge because of the weather. But the Chesil Tunnel tour was in the dry and very popular. We learned a lot from our visitors too: one had worked nearby, another had caught a train there. Thanks to our WCC guide for giving up his Saturday for us to see the southern part of the DSNR line.

For the first time ever, we postponed the Dawn Chorus Walk: it was raining so hard that we couldn't hear any birds! But the sun shined as we celebrated one of the new seats installed, and enjoyed a visit to the Eel House nearby, hosted by The Alresford Town Trust. Thank you to trustees for taking their part in this Annual event.



We are currently working on a joint project with Itchen Valley Parish Council to complete an 'Access for All' shorter ramp from their Recreation Ground to the Watercress Way path. This new ramp will be beneficial to many but had been delayed because the IVPC project had stalled. We look forward to working with IVPC on the project.

We hope this will be complete by next year.

As part of our Strategic Plan, Trustees examine every planning application that could affect the setting of The Watercress Way or even give better access to more of the disused railway line. Tony Langridge has been very helpful with this.

Mike, Stephen, other volunteers and ex Trustee Jim tackle the overgrown paths with brush cutters and rakes. The work to clear the paths was hampered by the very wet winter, spring and summer. To compensate, we will plan activity days 'with renewed vigour' for winter 2024/5.

Completing the Strategic Plan with likely costs attached, the rising cost of works and making enough time for volunteering has been a challenge for us all, but Julie Fullstone, our Treasurer has kept our finances in such good order. Julie is already committed to another charity and so will resign as soon as we can find a replacement. We thank her for her diligence and wish her well.

We have advertised for new Trustees with specific experience. I am pleased to say that volunteers are coming forward with the skills that we will need for the next five years.

**The Watercress Way**  
**Registered Charity Number 1167675**  
**For the year ended 5th April 2024**

	Notes	2024 £	£	2023 £	£
<b>Income and Expenditure account</b>					
<b>Income</b>					
Donations - general		607.45		465.25	
Donations - restricted	1	700.00		2551.17	
Calendar sales		185.41		598.44	
Other income - Eventbrite bird watching		-		24.40	
			1492.86		3639.26
<b>Expenditure</b>					
Restricted project expenditure (Note 3)		3909.50		1362.04	
Calendar costs		153.00		405.60	
IOW Expenditure		-			
Administrative costs		383.30		307.30	
Insurance		376.57		296.73	
Maintenance		409.50		90.00	
Training		175.00		-	
Tool stock write down		493.28		493.00	
			5900.15		2954.67
Net expenditure/ income			-4407.29		684.59
<b>Balance Sheet at 5th April 2024</b>					
<b>Assets</b>					
Debtors			-		120.80
Deposit for benches (restricted)			-		500.00
Stock of Tools	2		-		493.28
<b>Cash at bank</b>					
General funds		1692.29		3842.66	
Restricted funds		7027.78		8170.62	
			8720.07		12013.28
<b>Liabilities</b>					
Creditors		-	-	-	-
<b>Net Assets</b>			<b>8720.07</b>		<b>13127.36</b>
<b>Accumulated Fund</b>					
General fund brought forward		2758.48		384.76	
Restricted fund brought forward	3	10368.88		12058.01	
			13127.36		12442.77
Movement in year - General fund		-1066.19		1873.72	
Movement in year - Restricted fund	3	-3341.10		-1189.13	
			-4407.29		684.59
General fund carried forward		1692.29		2758.48	
Restricted fund carried forward	3	7027.78		10368.88	
			8720.07		13127.36

**Approved by the trustees of The Watercress Way on the .....2024**

Jackie Porter - Chair

Julie Fullstone - Treasurer

**The Watercress Way**  
**Registered Charity Number 1167675**  
**For the year ended 5th April 2024**

**Notes to the accounts**

**1. Restricted grants**

These grants can only be used for the purpose specified on the grant application and for which the grant is made.

**2. Equipment**

The trust has a stock of maintenance equipment which is shown in the accounts at cost. The stock comprises the following individual items:

	£
Loppers	47.94
High pruners	25.98
Pruning saw	32.90
Brush cutter and blades	658.46
Brush cutters (2)	1700.00
Less: write down for wear and tear	-2465.28
	<u>£0.00</u>

**3. Restricted grants received and applied in the year**

	Brought Forward	Transfer	Received	Applied	Carried Forward
	£		£	£	£
<b>Hampshire County Council</b>					
Leaflets	-		700.00	130.00	570.00
<b>Boomtown</b>					
Disabled access study/work	800.00				800.00
<b>Rotary Club of Winchester</b>					
Disabled access study	158.00				158.00
<b>Rotary Club of Alresford</b>					
Memorial benches	4,000.00			2,062.47	1,937.53
<b>Hellards</b>					
Pocket Guide book	500.00				500.00
<b>Sutton Scotney Bridge</b>					
Bridge Gates	2,551.17			1,232.53	1,318.64
<b>Winchester City Council</b>					
Posts	275.00			275.00	-
<b>Isle of Wight</b>					
	2,084.71			341.10	1,743.61
	<u>10368.88</u>		<u>700.00</u>	<u>4041.10</u>	<u>7027.78</u>

**The Watercress Way  
Financial Statements  
For the year ended 5th April 2024**

**THE WATERCRESS WAY**

England & Wales - Charity number 1167675

---

# Accounts

---



## Annual General Meeting 15<sup>th</sup> June 2023 Annual Report from the Chairman of Trustees of The Watercress Way

*Reporting on the year 2022-23 up to the anniversary of  
the foundation of the Charity on 16 June 2016.*

As the months have progressed since 2020, the impact of Covid 19 is thankfully lessening and volunteers are being encouraged to 'get involved' with our team.

Volunteer development has been a key feature of the work.

I really must thank our Trustee volunteers for being so adaptable in the work that they do, they are so loyal to the charity: preparing accounts, organising events, the website, managing contractors and volunteers, writing letters and carrying out practical tasks: thank you.

But we cannot do everything and I'd like to thank our volunteers who carry out work that may not have a cost, but contributes huge value to the charity.

Since our beginning in 2016, the yearly pattern of the Charity's work is emerging:-

Events, Planning applications, Fund raising, Improving signage, Promotion, research and public awareness of the ecology and heritage and conservation of the route and providing supporting infrastructure such as seats.



Unfortunately there appears to be someone who takes delight in vandalising signs and leaflet boxes. With help from the 'Community Shed' in Kings Worthy, we have replaced the boxes and the signage.



Not only do Trustees hold events to promote the charity, they have also commented on relevant planning applications and argued for potential changes to improve and lengthen public access to the dismantled lines between Sutton Scotney, Kings Worthy and Alresford.



A section of the old railway line in the Worthys has finally been agreed as part of the 'definitive map' which means that it will be on the next version of the OS map. We are really pleased because we believe that every metre of line gained is a triumph, and worth fighting for. In this case, we will change our map too.



We hold events related to the walks and cycle routes throughout the Summer and carry out conservation and maintenance projects from Autumn to Spring.

There are various roles-using some items of equipment need training, but the majority of skills are similar to gardening -theres a lot of raking to do!

We raised funds by selling 2023 Calendars to promote the views of The Watercress Way.

Some events held as part of the Watercress and Winterbourne project have been online: an online talk with an eminent ornithologist was followed by an in-person walk which was very popular and fully booked.

A low point in the year was the felling of about 150 ash trees at Itchen Abbas/Martyr Worthy. They were felled because the trees were suffering from ash die back. Stumps of varying heights have been left to see if they regenerate. The County Council has agreed to keep a watching brief on this.



Dawn to Dusk Day is an important day in the calendar for us. We led walks on the day in 2023, one virtual so the public could self-lead their treasure hunt.

We also hosted a Dawn Chorus walk in Sutton Scotney, a fascinating history walk in Itchen Abbas and Martyr Worthy, and a heritage and conservation

walk based around the Worthy Halt in Kings Worthy.

You can see longer descriptions about these and other events on our

website.[www.thewatercressway.org.uk](http://www.thewatercressway.org.uk). In 2024, Dawn to Dusk Day will be on 28<sup>th</sup>April.



Meanwhile, our work to put in infrastructure had been halted during Covid, but we were delighted to complete the fencing/gate on the Wonston Road Bridge in April too. Funding for the work was supported by Wonston Parish Council and the Railway Ramblers association, and crowd funding through Winchester City Council.

A new notice board will be installed, including a view to show what the route could look like if extended.

Thank you to all the organisations and individuals who supported this project.





A magpost was installed near the bridge at Worthy Down. This will give everyone the chance to look closely at flora and fauna under the magnifying glass set into the post.

Four new oak seats have been installed, making welcome stopping off points at Worthy Down, in Alresford on the Millennium Walk, and on the mile section at Bridgets Lane and west of Couch Green. These were funded from the generous Newitt legacy provided by

Alresford Rotary. Thanks to the HCC officer who assisted us.

The next part of this work is to install memorial plaques with relevant birdsong references on each seat so that the public can recognise the sounds they hear as they rest on the seats.



We were pleased to host a stall at the Watercress Festival, where we talked to over 300 people for the second year running. It was a great day in the sunshine with many people stopping to chat and support us, and offer to volunteer.

But it's not all about public facing work. Two of our Trustees have been developing a new section on the website which now offers an opportunity to register their wish to volunteer. Please make use of it if you haven't done so already!

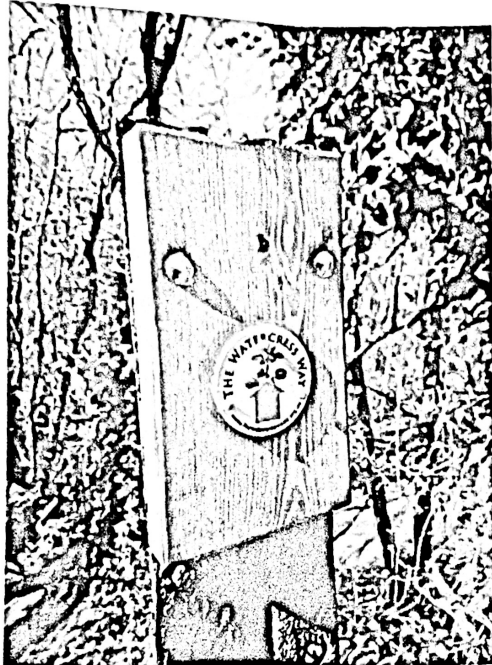
And so, like The Watercress Way itself, this report comes round full circle.

Our Trustees have done so much this year, but to do even more, we need an army of volunteers to help. Could you give a few hours even once a year to help develop the routes along our old railway lines? If you can, we'd thank you from the bottom of our hearts!



**Jackie Porter**

Chairman of The Watercress Way  
Reg No 1167675



**Annual General Meeting 15<sup>th</sup> June 2023  
Annual Report from the Chairman of Trustees of The  
Watercress Way**

*Reporting on the year 2022-23 up to the anniversary of  
the foundation of the Charity on 16 June 2016.*

As the months have progressed since 2020, the impact of Covid 19 is thankfully lessening and volunteers are being encouraged to 'get involved' with our team.

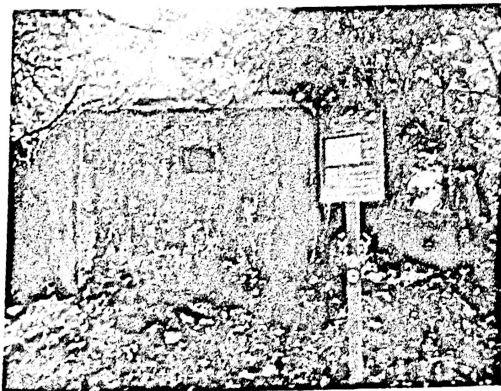
Volunteer development has been a key feature of the work.

I really must thank our Trustee volunteers for being so adaptable in the work that they do, they are so loyal to the charity: preparing accounts, organising events, the website, managing contractors and volunteers, writing letters and carrying out practical tasks: thank you.

But we cannot do everything and I'd like to thank our volunteers who carry out work that may not have a cost, but contributes huge value to the charity.

Since our beginning in 2016, the yearly pattern of the Charity's work is emerging:-

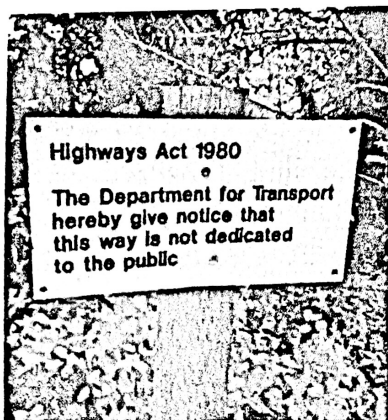
Events, Planning applications, Fund raising, Improving signage, Promotion, research and public awareness of the ecology and heritage and conservation of the route and providing supporting infrastructure such as seats.



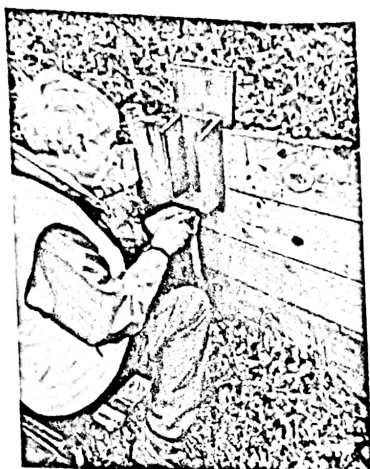
Unfortunately there appears to be someone who takes delight in vandalising signs and leaflet boxes. With help from the 'Community Shed' in Kings Worthy, we have replaced the boxes and the signage.



Not only do Trustees hold events to promote the charity, they have also commented on relevant planning applications and argued for potential changes to improve and lengthen public access to the dismantled lines between Sutton Scotney, Kings Worthy and Alresford.



A section of the old railway line in the Worthys has finally been agreed as part of the 'definitive map' which means that it will be on the next version of the OS map. We are really pleased because we believe that every metre of line gained is a triumph, and worth fighting for. In this case, we will change our map too.



We hold events related to the walks and cycle routes throughout the Summer and carry out conservation and maintenance projects from Autumn to Spring.

There are various roles-using some items of equipment need training, but the majority of skills are similar to gardening -theres a lot of raking to do!

We raised funds by selling 2023 Calendars to promote the views of The Watercress Way.

Some events held as part of the Watercress and Winterbourne project have been online: an online talk with an eminent ornithologist was followed by an in-person walk which was very popular and fully booked.

A low point in the year was the felling of about 150 ash trees at Itchen Abbas/Martyr Worthy. They were felled because the trees were suffering from ash die back. Stumps of varying heights have been left to see if they regenerate. The County Council has agreed to keep a watching brief on this.



Dawn to Dusk Day is an important day in the calendar for us. We led walks on the day in 2023, one virtual so the public could self-lead their treasure hunt.

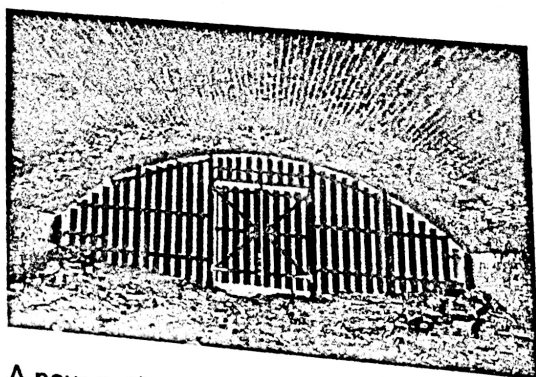
We also hosted a Dawn Chorus walk in Sutton Scotney, a fascinating history



walk in Itchen Abbas and Martyr Worthy, and a heritage and conservation

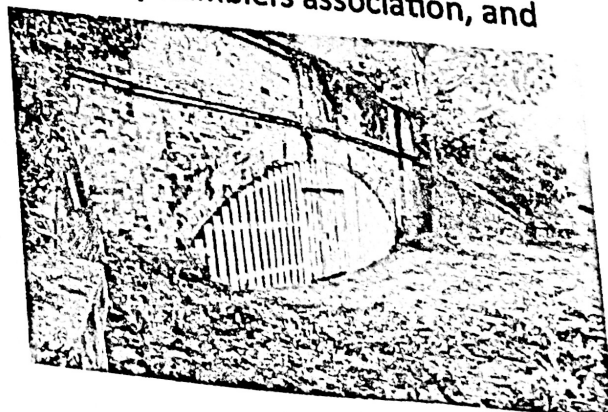
walk based around the Worthy Halt in Kings Worthy. You can see longer descriptions about these and other events on our

website.[www.thewatercressway.org.uk](http://www.thewatercressway.org.uk). In 2024, Dawn to Dusk Day will be on 28<sup>th</sup> April.



Meanwhile, our work to put in infrastructure had been halted during Covid, but we were delighted to complete the fencing/gate on the Wonston Road Bridge in April too. Funding for the work was supported by Wonston Parish Council and the Railway Ramblers association, and crowd funding through Winchester City Council.

A new notice board will be installed, including a view to show what the route could look like if extended. Thank you to all the organisations and individuals who supported this project.

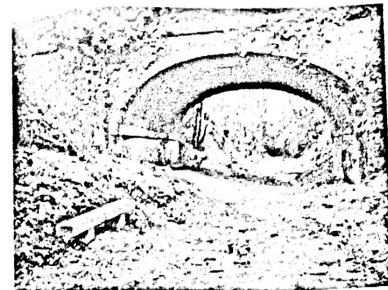
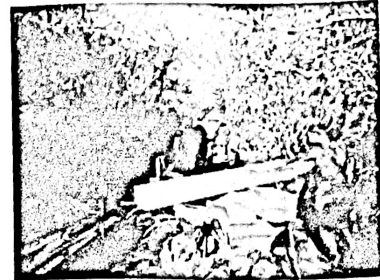




A magpost was installed near the bridge at Worthy Down. This will give everyone the chance to look closely at flora and fauna under the magnifying glass set into the post.

Four new oak seats have been installed, making welcome stopping off points at Worthy Down, in Alresford on the Millennium Walk, and on the mile section at Bridgets Lane and west of Couch Green. These were funded from the generous Newitt legacy provided by

Alresford Rotary. Thanks to the HCC officer who assisted us. The next part of this work is to install memorial plaques with relevant birdsong references on each seat so that the public can recognise the sounds they hear as they rest on the seats.

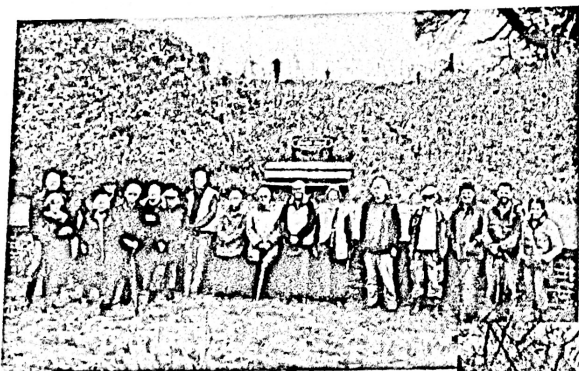


We were pleased to host a stall at the Watercress Festival, where we talked to over 300 people for the second year running. It was a great day in the sunshine with many people stopping to chat and support us, and offer to volunteer.

But it's not all about public facing work. Two of our Trustees have been developing a new section on the website which now offers an opportunity to register their wish to volunteer. Please make use of it if you haven't done so already!

And so, like The Watercress Way itself, this report comes round full circle.

Our Trustees have done so much this year, but to do even more, we need an army of volunteers to help. Could you give a few hours even once a year to help develop the routes along our old railway lines? If you can, we'd thank you from the bottom of our hearts!



Jackie Porter  
Chairman of The Watercress Way  
Reg No 1167675

The Watercress Way  
Registered Charity Number 1167675  
For the year ended 5th April 2023

	Notes	2023		2022	
		£	£	£	£
<b>Income and Expenditure account</b>					
<b>Income</b>					
Donations - general		465.25		1023.86	
Donations - restricted		2551.17		-	
General grants and sponsorship		-		424.47	
Calendar sales		598.44		-	
Other income - Eventbrite bird watching		24.40		-	
Restricted grants	1	-		2796.75	
			3639.26		4245.08
<b>Expenditure</b>					
Calendar costs		405.60		270.00	
IOW Grant expenditure		712.04		-	
Administrative costs		471.60		443.68	
Insurance		296.73		288.37	
Maintenance		90.00		-	
Printing		485.70		148.98	
Training - Brush cutting		-		363.00	
Tool stock write down		493.00		493.00	
			2954.67		2007.03
			<u>684.59</u>		<u>2238.05</u>
Net expenditure/ income					
<b>Balance Sheet at 5th April 2023</b>					
<b>Assets</b>					
Debtors			120.80		95.80
Deposit for benches (restricted)			500.00		-
Stock of Tools	2		493.28		986.28
<b>Cash at bank</b>					
General funds		3842.66		2000.94	
Restricted funds		8170.62		9359.75	
			12013.28		11360.69
<b>Liabilities</b>					
Creditors	3	-		-	
			0.00		0.00
Net Assets			<u>13127.36</u>		<u>12442.77</u>
<b>Accumulated Fund</b>					
General fund brought forward		3083.02		4027.90	
Restricted fund brought forward	4	9359.75		9179.75	
			12442.77		13207.65
Movement in year - General fund		1873.72		-997.41	
Movement in year - Restricted fund	4	-1189.13		232.53	
			684.59		-764.88
General fund carried forward		4956.74		3083.02	
Restricted fund carried forward	4	8170.62		9359.75	

13127.36

12442.77

Approved by the trustees of The Watercress Way on the .....15<sup>th</sup> June.....2023

Jackie Porter - Chair



Julie Fullstone - Treasurer



**The Watercress Way**  
**Registered Charity Number 1167675**  
**For the year ended 5th April 2023**

**Notes to the accounts**

**1. Restricted grants**

These grants can only be used for the purpose specified on the grant application and for which the grant is made.

**2. Equipment**

The trust has a stock of maintenance equipment which is shown in the accounts at cost. The stock comprises the following individual items:

	£
Loppers	47.94
High pruners	25.98
Pruning saw	32.90
Brush cutter and blades	658.46
Brush cutters (2)	1700.00
Less: write down for wear and tear	-1972.00
	<u>£493.28</u>

**3. Prepayment**

This is the deposit for the supply of benches funded by the restricted grant from Alresford Rotary Club

**4. Restricted grants received and applied in the year**

	Brought Forward	Transfer	Received	Applied	Carried Forward
	£		£	£	£
<b>Hampshire County Council</b>					
Interpretation boards	112.00			112.00	-
<b>Boomtown</b>					
Disabled access study/work	800.00				800.00
<b>Rotary Club of Winchester</b>					
Disabled access study	158.00				158.00
<b>Rotary Club of Alresford</b>					
Memorial benches	4,500.00			500.00	4,000.00

<b>Hellards</b>				
Pocket Gulde book	500.00			500.00
<b>Sutton Scotney Bridge</b>				
Bridge Gates	-	2,551.17		2,551.17
<b>Winchester City Council</b>				
Posts	313.00		38.00	275.00
<b>Isle of Wight</b>				
	2,796.75		712.04	2,084.71
	<u>9179.75</u>	<u>2551.17</u>	<u>1362.04</u>	<u>10368.88</u>

**The Watercress Way**  
**Financial Statements**  
**For the year ended 5th April 2023**

**Poolemead Accountants (Winchester) Ltd**  
**Chartered Accountants & Business Advisors**

**THE WATERCRESS WAY**

England & Wales - Charity number 1167675

---

# Accounts

---



## End of Year Report 2021: Brush Cutting and planning

This has been another challenging year for us all however, we have been busy during the year. We have recruited new trustees, run guided walks and improved the ecology of the line. A new website is ready to be launched and we have ambitious plans for 2022.



Our 3 new trustees, Stephen Jeffery, Chris Brunskill and Emma Banks have been integrated into the team and are now leading exciting projects. We have also recruited Julie Fullstone to be our Treasurer. She will be an excellent addition and is aiding planning and financial prudence.

Sadly, two of our long term trustees have retired. Jim Thompson was a founder of the charity and his expertise in ecology and land management will be hard to replace. Kim Adams has been the driving force in organising our guided walks and writing guides in addition to raising funds and developing our social media presence. Both will be greatly missed but will continue to volunteer on an ad hoc basis.

The trustees have continued to meet monthly via Zoom and more recently in person. We have organised a variety of activities including guided walks and regular monitoring and maintenance of the route. This year we were able to hold our AGM in June at Alresford station and were delighted to meet again in person.

If you are interested in helping us or joining in any activities please sign up for our newsletters by becoming a **Friend of the Way**.

We rely totally on donations and grants. Please donate via our website. When doing internet shopping you can support us at no cost via Give As You Live and Amazon Smile. Sign up via [www.thewatercressway.org.uk](http://www.thewatercressway.org.uk)

### Activities:

- A series of guided walks in the summer as part of the 8 Walk challenge to complete the whole trail
- Regularly updated the website and social media. On Facebook we set up The Watercress Way group of 256 members plus 1467 followers. On Instagram and Twitter we now have 875 and 82 followers respectively.
- Maintained the Wonston bridge site and improved the route through Sutton Scotney



- Helped maintain the railway paths and improve the ecology. We assisted the Worthys Conservation Volunteer group on habitat improvements at Worthy Down Platforms. Aviva Volunteer Day July 2021. Clearance at Couch Green November 2021
- Conducted tree surveys to identify at risk ash trees on the Martyr Worthy section
- Designed and wrote a new website so we can maintain it more easily and be more responsive to public need
- Prepared a Business Plan to assist in planning our future activities and to support grant applications
- Made a successful bid to Watercress and Winterbourne to fund our activities in 2022 and to improve our volunteer base
- Trustee Stephen Jeffery produced a calendar of The Watercress Way for sale in local shops and online. Profits going to the charity



#### **Local Engagement:**

- Re-established contact with local pubs and businesses to act as sponsors as commerce opened up again
- Obtained funding from Hellards Estate Agents for a guide book which will be published in 2022
- Agreed new rights of way along the disused railway line at Top Field, Kings Worthy and helped plan a new path. Worked with Winchester City Council and Kings Worthy Parish Council to implement the plans
- Met with HCC and Itchen Valley Parish Council to make progress on disabled access to the Martyr Worthy mile of the disused Watercress Line following the hiatus of the last year



### **Plans for 2022**

- Install 3 benches generously donated by Alresford Rotary Cub
- Organise and run 10 events to serve the local Community using a grant from Watercress and Winterbourne
- Install a mag post funded by Winchester City Council for children to examine leaves and insects
- Run our dawn to Dusk Day in April and a series of guided walks during the summer
- Continue to enhance the biodiversity of the trail through volunteer sessions



**Mike Collis and Trustees**

**THE WATERCRESS WAY**

England & Wales - Charity number 1167675

---

# Accounts

---



## End of Year Report 2021: Brush Cutting and planning

This has been another challenging year for us all however, we have been busy during the year. We have recruited new trustees, run guided walks and improved the ecology of the line. A new website is ready to be launched and we have ambitious plans for 2022.



Our 3 new trustees, Stephen Jeffery, Chris Brunskill and Emma Banks have been integrated into the team and are now leading exciting projects. We have also recruited Julie Fullstone to be our Treasurer. She will be an excellent addition and is aiding planning and financial prudence.

Sadly, two of our long term trustees have retired. Jim Thompson was a founder of the charity and his expertise in ecology and land management will be hard to replace. Kim Adams has been the driving force in organising our guided walks and writing guides in addition to raising funds and developing our social media presence. Both will be greatly missed but will continue to volunteer on an ad hoc basis.

The trustees have continued to meet monthly via Zoom and more recently in person. We have organised a variety of activities including guided walks and regular monitoring and maintenance of the route. This year we were able to hold our AGM in June at Alresford station and were delighted to meet again in person.

If you are interested in helping us or joining in any activities please sign up for our newsletters by becoming a **Friend of the Way**.

We rely totally on donations and grants. Please donate via our website. When doing internet shopping you can support us at no cost via Give As You Live and Amazon Smile. Sign up via [www.thewatercressway.org.uk](http://www.thewatercressway.org.uk)

### Activities:

- A series of guided walks in the summer as part of the 8 Walk challenge to complete the whole trail
- Regularly updated the website and social media. On Facebook we set up The Watercress Way group of 256 members plus 1467 followers. On Instagram and Twitter we now have 875 and 82 followers respectively.
- Maintained the Wonston bridge site and improved the route through Sutton Scotney



- Helped maintain the railway paths and improve the ecology. We assisted the Worthys Conservation Volunteer group on habitat improvements at Worthy Down Platforms. Aviva Volunteer Day July 2021. Clearance at Couch Green November 2021
- Conducted tree surveys to identify at risk ash trees on the Martyr Worthy section
- Designed and wrote a new website so we can maintain it more easily and be more responsive to public need
- Prepared a Business Plan to assist in planning our future activities and to support grant applications
- Made a successful bid to Watercress and Winterbourne to fund our activities in 2022 and to improve our volunteer base
- Trustee Stephen Jeffery produced a calendar of The Watercress Way for sale in local shops and online. Profits going to the charity



#### **Local Engagement:**

- Started to re-established contact with local pubs and businesses to act as sponsors as commerce opened up again
- Obtained funding from Hellards Estate Agents for a guide book which will be published in 2022
- Agreed new rights of way along the disused railway line at Top Field, Kings Worthy and helped plan a new path. Worked with Winchester City Council and Kings Worthy Parish Council to implement the plans
- Met with HCC and Itchen Valley Parish Council to make progress on disabled access to the Martyr Worthy mile of the disused Watercress Line following the hiatus of the last year



### **Plans for 2022**

- Install 3 benches generously donated by Alresford Rotary Cub
- Organise and run 10 events to serve the local Community using a grant from Watercress and Winterbourne
- Continue to re-established contact with local pubs and businesses to act as sponsors as commerce opens up further
- Install a mag post funded by Winchester City Council for children to examine leaves and insects
- Run our dawn to Dusk Day in April and a series of guided walks during the summer
- Continue to enhance the biodiversity of the trail through volunteer sessions



### **Mike Collis and Trustees**

**The Watercress Way**  
**Registered Charity Number 1167675**  
**For the year ended 5th April 2021**

		2021		2020	
Notes	£	£	£	£	£
<b>Income and Expenditure account</b>					
<b>Income</b>					
Donations		243.70		3807.59	
General grants and sponsorship		405.00		419.20	
Restricted grants	<b>1</b>	500.00		5000.00	
			1148.70		9226.79
<b>Expenditure</b>					
Projects: Boards and benches		451.90		894.32	
Administrative costs		222.93		98.50	
Insurance		327.04		319.20	
Maintenance		116.40		14.28	
Printing		-71.50		631.16	
Equipment sundries		159.99		76.79	
Tool stock write down		493.00		493.00	
Tool purchases		213.82		31.96	
			1913.58		2559.21
Net expenditure/ income			-764.88		6667.58
<b>Balance Sheet at 5th April 2019</b>					
<b>Assets</b>					
Stock of Tools	<b>2</b>		1479.28		1972.28
<b>Cash at bank</b>					
General funds		2408.14		2094.55	
Restricted funds		6383.00		6902.77	
			8791.14		8997.32
<b>Liabilities</b>					
Creditors	<b>3</b>	65.70		-	
Accruals				-	
			65.70		0.00
<b>Net Assets</b>			10204.72		10969.60
<b>Accumulated Fund</b>					
General fund brought forward		4819.13		2663.42	
Restricted fund brought forward	<b>4</b>	6150.47		1638.60	
			10969.60		4302.02
Movement in year - General fund		-997.41		2155.71	
Movement in year - Restricted fund	<b>4</b>	232.53		4511.87	
			-764.88		6667.58
General fund carried forward		3821.72		4819.13	
Restricted fund carried forward	<b>4</b>	6383.00		6150.47	
			10204.72		10969.60

**Approved by the trustees of The Watercress Way on the .....2021**

Jackie Porter - Chair

Kay Mead - Treasurer

**The Watercress Way**  
**Registered Charity Number 1167675**  
**For the year ended 5th April 2021**

**Notes to the accounts**

**1. Restricted grants**

These grants can only be used for the purpose specified on the grant application and for which the grant is made.

**2. Equipment**

The trust has a stock of maintenance equipment which is shown in the accounts at cost. The stock comprises the following individual items:

	<b>£</b>
Loppers	47.94
High pruners	25.98
Pruning saw	32.90
Brush cutter and blades	658.46
Brush cutters (2)	1700.00
Less: write down for wear and tear	-986.00
	<b>£1,479.28</b>

**3. Creditors**

This the amount invoiced and paid after the year end for the Ordnance Survey licence.

**4. Restricted grants received and applied in the year**

	<b>Brought Forward</b>	<b>Transfer</b>	<b>Received</b>	<b>Applied</b>	<b>Carried Forward</b>
	<b>£</b>		<b>£</b>	<b>£</b>	<b>£</b>
<b>Hampshire County Council</b>					
Miscellaneous	93.50	-18.87		74.63	0.00
Interpretation boards	35.27	112.00		35.27	112.00
<b>Boomtown</b>					
Sleeper Benches - 3	147.70	-147.70			0.00
Disabled access study/work	800.00				800.00
<b>Rotary Club of Winchester</b>					
Disabled access study	500.00			342.00	158.00
<b>Rotary Club of Alresford</b>					
Memorial benches	4500				4500.00
<b>Hellards</b>					
Pocket Guide book			500.00		500.00
<b>Winchester City Council</b>					
Posts	74.00	239.00			313.00
	<b>6150.47</b>	<b>184.43</b>	<b>500.00</b>	<b>451.90</b>	<b>6383.00</b>