



## Trustees' Annual Report for the period

From	Period start date			To	Period end date		
	01	04	2023		31	03	2024

### Section A Reference and administration details

Charity name

Cardea Community Sports Association

Other names charity is known by

CCSA

Registered charity number (if any)

1167553

Charity's principal address

Bellona Drive,

Cardea, South Stanground

Peterborough

Postcode

PE2 8GP

#### Names of the charity trustees who manage the charity

	Trustee name	Office (if any)	Dates acted if not for whole year	Name of person (or body) entitled to appoint trustee (if any)
1	Ciaran McAuley			
2	Jason Holt			
3	Trevor Blackmore			
4	Jade Blackmore			
5				
6				
7				
8				
9				
10				
11				
12				
13				
14				
15				
16				
17				
18				
19				
20				

#### Names of the trustees for the charity, if any, (for example, any custodian trustees)

Name	Dates acted if not for whole year

## Names and addresses of advisers (Optional information)

Type of adviser	Name	Address

## Name of chief executive or names of senior staff members (Optional information)

--

# Section B Structure, governance and management

## Description of the charity's trusts

Type of governing document (eg. trust deed, constitution)	Constitution
How the charity is constituted (eg. trust, association, company)	Charitable Incorporated Organisation (CIO)
Trustee selection methods (eg. appointed by, elected by)	Elected By

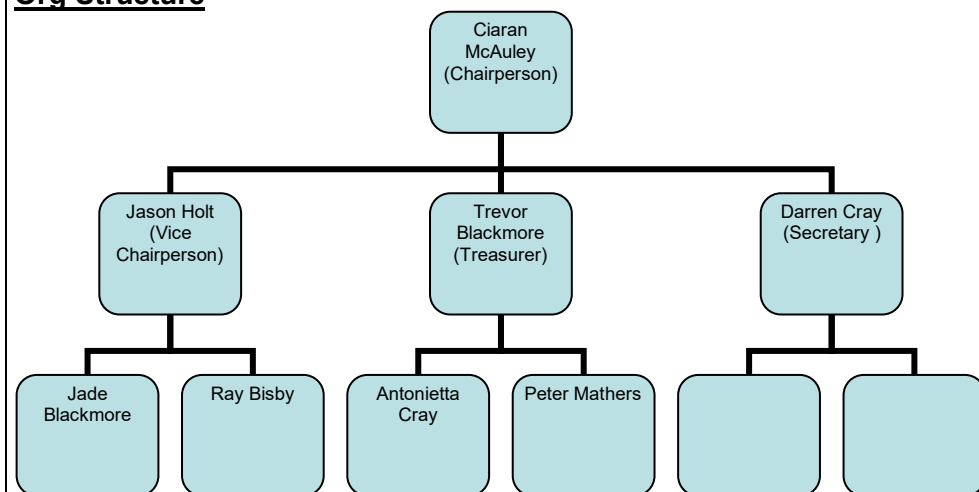
## Additional governance issues (Optional information)

You **may choose** to include additional information, where relevant, about:

- policies and procedures adopted for the induction and training of trustees;
- the charity's organisational structure and any wider network with which the charity works;
- relationship with any related parties;
- trustees' consideration of major risks and the system and procedures to manage them.

- Monthly committee meeting of trustees & members including
  - Financial overview & performance
  - Adherence to aims & objectives
  - Risk & Issue overview
  - Customer overview & feedback
  - Strategy alignment
  - Future planning & road mapping

### Org Structure



- 

## Section C

## Objectives and activities

**Summary of the objects of the charity set out in its governing document**

The CCSA will promote and provide facilities for various sports and groups for Cardea, Stanground and the wider Peterborough area.

- To offer coaching and sporting opportunities
- To promote the CCSA within the local community
- To manage the CCSA, facilities and finances
- To ensure a duty of care for all members of the CCSA
- To provide all services in a way that is fair to all residents regardless of age, sex or background
- To ensure that all present and future members receive full and equal treatment

**Summary of the main activities undertaken for the public benefit in relation to these objects (include within this section the statutory declaration that trustees have had regard to the guidance issued by the Charity Commission on public benefit)**

We continue to remain accessible to everyone and have a very healthy diverse number of different groups using our facilities. We continue to promote our aims and objective throughout our catchment area and beyond. Football clubs have used our facilities where possible. Finances have been managed in line with expectations and reinvested in our facilities by purchasing additional assets and equipment to further enhance peoples experience when they visit us.

**Additional details of objectives and activities (Optional information)**

You **may choose** to include further statements, where relevant, about:

- policy on grantmaking;
- policy programme related investment;
- contribution made by volunteers.

**Summary of the main achievements of the charity during the year**

Room hire has been positive throughout the year with multiple groups continuing to use our facilities. This is more regular throughout school terms with the out of school groups.

Football pitch hire has been strong following on from the maintenance and repairs carried out in the previous year.

We have not seen any grant funding available to us in 2023/2024 and we continue to look for avenues of additional funding for reinvestment.

## Section E

## Financial review

### Brief statement of the charity's policy on reserves

Once our charities activities have stabilised and we have stopped investing in assets, a reserve account will be created to support our future development plans of the site.

### Details of any funds materially in deficit

### Further financial review details (Optional information)

You **may choose** to include additional information, where relevant about:

- the charity's principal sources of funds (including any fundraising);
- how expenditure has supported the key objectives of the charity;
- investment policy and objectives including any ethical investment policy adopted.

As the building approaches its 8<sup>th</sup> year in operation, the fabric and equipment is aging at an expected pace and funds are being directed to support this.

There has been a significant increase in our utility costs. Electricity has nearly doubled, our discount on Internet has ended, cleaning costs have increased and PCC have begun charging us for waste collections (previously offered FOC).

Funds will need to further directed towards future plant room repairs, repairs to the football dugs and areas of damage caused by vandalism. We will be investing in a water borehole allowing us to irrigate the pitches for the cost of running a pump.

## Section F

## Other optional information

## Section G

## Declaration

The trustees declare that they have approved the trustees' report above.

Signed on behalf of the charity's trustees

Signature(s)		
Full name(s)	Ciaran McAuley	Trevor Blackmore
Position (eg Secretary, Chair, etc)	Chair	Treasurer
Date	04/01/2025	



CHARITY COMMISSION  
FOR ENGLAND AND WALES

Charity Name  
Cardea Community Sports Association

No (if any)  
1167553

CC16a

## Receipts and payments accounts

For the period  
from

Period start date  
Apr-23

To

Period end date  
Mar-24

### Section A Receipts and payments

	Unrestricted funds	Restricted funds	Endowment funds	Total funds	Last year
	to the nearest £	to the nearest £	to the nearest £	to the nearest £	to the nearest £
<b>A1 Receipts</b>					
Fundraising	-	-	-	-	-
Donations	-	-	-	-	-
Pitch Hire	2,450	-	-	2,450	2,925
Room Hire	13,500	-	-	13,500	15,715
Café Sales	2,300	-	-	2,300	2,666
Grants	-	-	-	-	-
	-	-	-	-	-
	-	-	-	-	-
<b>Sub total (Gross income for AR)</b>	<b>18,250</b>	<b>-</b>	<b>-</b>	<b>18,250</b>	<b>21,306</b>
<b>A2 Asset and investment sales, (see table).</b>					
	-	-	-	-	-
	-	-	-	-	-
<b>Sub total</b>	<b>-</b>	<b>-</b>	<b>-</b>	<b>-</b>	<b>-</b>
<b>Total receipts</b>	<b>18,250</b>	<b>-</b>	<b>-</b>	<b>18,250</b>	<b>21,306</b>
<b>A3 Payments</b>					
Cleaning	958	-	-	958	1,106
Professional Fees	-	-	-	-	-
Café Food & Beverage	1,980	-	-	1,980	2,843
Fundraising Costs	-	-	-	-	-
Insurance	405	-	-	405	392
Maintenance & Supplies	8,240	-	-	8,240	6,286
Utilities	5,725	-	-	5,725	6,170
IT Support	1,250	-	-	1,250	1,056
Pitch Maintenance	2,424	-	-	2,424	2,208
Business Rates	-	-	-	-	-
<b>Sub total</b>	<b>20,982</b>	<b>-</b>	<b>-</b>	<b>20,982</b>	<b>20,061</b>
<b>A4 Asset and investment purchases. (see table)</b>					
Equipment	-	-	-	-	-
Landscaping	-	-	-	-	-
<b>Sub total</b>	<b>-</b>	<b>-</b>	<b>-</b>	<b>-</b>	<b>-</b>
<b>Total payments</b>	<b>20,982</b>	<b>-</b>	<b>-</b>	<b>20,982</b>	<b>20,061</b>
<b>Net of receipts/(payments)</b>	<b>- 2,732</b>	<b>-</b>	<b>-</b>	<b>- 2,732</b>	<b>1,245</b>
<b>A5 Transfers between funds</b>	<b>-</b>	<b>-</b>	<b>-</b>	<b>-</b>	<b>-</b>
<b>A6 Cash funds last year end</b>	<b>9,966</b>	<b>-</b>	<b>-</b>	<b>9,966</b>	<b>9,966</b>
<b>Cash funds this year end</b>	<b>7,234.09</b>	<b>-</b>	<b>-</b>	<b>7,234</b>	<b>11,211</b>

## Section B Statement of assets and liabilities at the end of the period

Categories	Details	Unrestricted funds to nearest £	Restricted funds to nearest £	Endowment funds to nearest £
<b>B1 Cash funds</b>	Barclays Current Account	7,234	-	11,211
		-	-	-
		-	-	-
	<b>Total cash funds</b>	7,234	-	11,211
	(agree balances with receipts and payments account(s))	OK	OK	OK
		Unrestricted funds to nearest £	Restricted funds to nearest £	Endowment funds to nearest £
<b>B2 Other monetary assets</b>	Details			
		-	-	-
		-	-	-
		-	-	-
<b>B3 Investment assets</b>	Details	Fund to which asset belongs	Cost (optional)	Current value (optional)
			-	-
			-	-
<b>B4 Assets retained for the charity's own use</b>	Details	Fund to which asset belongs	Cost (optional)	Current value (optional)
	Pavilion building and plant	-	-	-
	Audio Visual Equipment	Unrestricted		-
	Managed Network & WiFi System	Unrestricted		-
	Internal CCTV System	Unrestricted		-
	Glass Display Fridge	Unrestricted		-
	Commercial Kitchen Equipment	Unrestricted		-
	Outdoor Benches	Unrestricted		
	Storage Container x2	Unrestricted		
	Tables and Chairs	Unrestricted		-
	Aluminium Moveable goalposts	Unrestricted		-
	Rideon Mower & Push Mower	Unrestricted		
	External CCTV Cameras	Unrestricted		
	Additional Kitchen Equipment	Unrestricted		
	Handryers and Cistern Controllers	Unrestricted		
	Industrial Shelving	Unrestricted		
	Signage External & Internal	Unrestricted		
	Outdoor Gym Equipment	Unrestricted		-
<b>B5 Liabilities</b>	Details	Fund to which liability relates	Amount due (optional)	When due (optional)
			-	
			-	
			-	
			-	
		-		
Signed by one or two trustees on behalf of all the trustees	Signature	Print Name	Date of approval	
		Trevor Blackmore	04/01/2025	
		Ciaran McAuley	04/01/2025	