



Trustees' Annual Report for the period

From	Period start date			To	Period end date		
	01	04	2022		31	03	2023

Section A Reference and administration details

Charity name

Cardea Community Sports Association

Other names charity is known by

CCSA

Registered charity number (if any)

1167553

Charity's principal address

Bellona Drive,

Cardea, South Stanground

Peterborough

Postcode

PE2 8GP

Names of the charity trustees who manage the charity

	Trustee name	Office (if any)	Dates acted if not for whole year	Name of person (or body) entitled to appoint trustee (if any)
1	Ciaran McAuley			
2	Jason Holt			
3	Trevor Blackmore			
4	Jade Blackmore			
5	Peter Mathers			
6				
7				
8				
9				
10				
11				
12				
13				
14				
15				
16				
17				
18				
19				
20				

Names of the trustees for the charity, if any, (for example, any custodian trustees)

Name	Dates acted if not for whole year

Names and addresses of advisers (Optional information)

Type of adviser	Name	Address

Name of chief executive or names of senior staff members (Optional information)

--

Section B Structure, governance and management

Description of the charity's trusts

Type of governing document (eg. trust deed, constitution)	Constitution
How the charity is constituted (eg. trust, association, company)	Charitable Incorporated Organisation (CIO)
Trustee selection methods (eg. appointed by, elected by)	Elected By

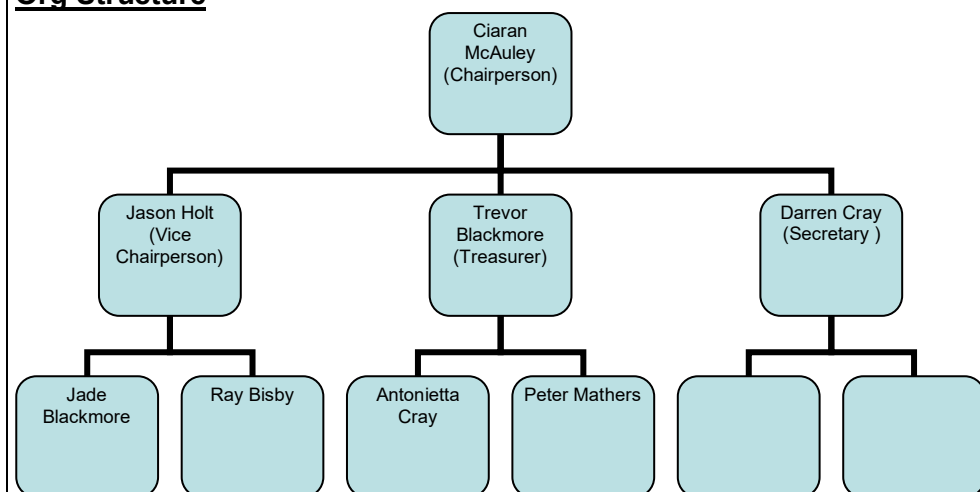
Additional governance issues (Optional information)

You **may choose** to include additional information, where relevant, about:

- policies and procedures adopted for the induction and training of trustees;
- the charity's organisational structure and any wider network with which the charity works;
- relationship with any related parties;
- trustees' consideration of major risks and the system and procedures to manage them.

- Monthly committee meeting of trustees & members including
 - Financial overview & performance
 - Adherence to aims & objectives
 - Risk & Issue overview
 - Customer overview & feedback
 - Strategy alignment
 - Future planning & road mapping

Org Structure



-

Section C

Objectives and activities

Summary of the objects of the charity set out in its governing document

The CCSA will promote and provide facilities for various sports and groups for Cardea, Stanground and the wider Peterborough area.

- To offer coaching and sporting opportunities
- To promote the CCSA within the local community
- To manage the CCSA, facilities and finances
- To ensure a duty of care for all members of the CCSA
- To provide all services in a way that is fair to all residents regardless of age, sex or background
- To ensure that all present and future members receive full and equal treatment

Summary of the main activities undertaken for the public benefit in relation to these objects (include within this section the statutory declaration that trustees have had regard to the guidance issued by the Charity Commission on public benefit)

We continue to remain accessible to everyone and have a very healthy diverse number of different groups using our facilities. We continue to promote our aims and objective throughout our catchment area and beyond. Football clubs have used our facilities where possible. Finances have been managed in line with expectations and reinvested in our facilities by purchasing additional assets and equipment to further enhance peoples experience when they visit us.

Additional details of objectives and activities (Optional information)

You **may choose** to include further statements, where relevant, about:

- policy on grantmaking;
- policy programme related investment;
- contribution made by volunteers.

Summary of the main achievements of the charity during the year

Room hire has been positive throughout the year with multiple groups continuing to use our facilities. This is more regular throughout school terms with the out of school groups.

Football pitch hire has been strong following on from the maintenance and repairs carried out in the previous year.

We have not seen any grant funding available to us in 2022/2023 and we continue to look for avenues of additional funding for reinvestment.

Section E

Financial review

Brief statement of the charity's policy on reserves

Once our charities activities have stabilised and we have stopped investing in assets, a reserve account will be created to support our future development plans of the site.

Details of any funds materially in deficit

Further financial review details (Optional information)

You **may choose** to include additional information, where relevant about:

- the charity's principal sources of funds (including any fundraising);
- how expenditure has supported the key objectives of the charity;
- investment policy and objectives including any ethical investment policy adopted.

As the building approaches its 7th year in operation, the fabric and equipment is aging at an expected pace and funds are being directed to support this.

There has been a significant increase in our utility costs. Electricity has nearly doubled, our discount on Internet has ended, cleaning costs have increased and PCC have begun charging us for waste collections (previously offered FOC).

Funds will need to further directed towards future plant room repairs, repairs to the football dugs and areas of damage caused by vandalism.

Section F

Other optional information

Section G

Declaration

The trustees declare that they have approved the trustees' report above.

Signed on behalf of the charity's trustees

Signature(s)		
Full name(s)	Ciaran McAuley	Trevor Blackmore
Position (eg Secretary, Chair, etc)	Chair	Treasurer
Date	17/01/2024	



CHARITY COMMISSION
FOR ENGLAND AND WALES

Charity Name

Cardea Community Sports Association

No (if any)

1167553

Receipts and payments accounts

CC16a

For the period
from

Period start date
Apr-22

To

Period end date
Mar-23

Section A Receipts and payments

	Unrestricted funds	Restricted funds	Endowment funds	Total funds	Last year
	to the nearest £	to the nearest £	to the nearest £	to the nearest £	to the nearest £
A1 Receipts					
Fundraising	-	-	-	-	-
Donations	-	-	-	-	-
Pitch Hire	2,925	-	-	2,925	1,270
Room Hire	15,715	-	-	15,715	14,810
Café Sales	2,666	-	-	2,666	5,434
Grants	-	-	-	-	3,000
	-	-	-	-	-
	-	-	-	-	-
Sub total (Gross income for AR)	21,306	-	-	21,306	24,514
A2 Asset and investment sales, (see table).					
	-	-	-	-	-
	-	-	-	-	-
Sub total	-	-	-	-	-
Total receipts	21,306	-	-	21,306	24,514
A3 Payments					
Cleaning	1,105	-	-	1,105	501
Professional Fees	-	-	-	-	-
Café Food & Beverage	2,844	-	-	2,844	3,890
Fundraising Costs	-	-	-	-	276
Insurance	392	-	-	392	448
Maintenance & Supplies	6,286	-	-	6,286	3,904
Utilities	6,170	-	-	6,170	3,061
IT Support	1,056	-	-	1,056	486
Pitch Maintenance	2,208	-	-	2,208	6,479
Business Rates	-	-	-	-	480
Sub total	20,062	-	-	20,062	19,525
A4 Asset and investment purchases. (see table)					
Equipment		-	-	-	3,922
Landscaping		-	-	-	3,913
Sub total	-	-	-	-	7,835
Total payments	20,062	-	-	20,062	27,360
Net of receipts/(payments)	1,245	-	-	1,245	- 2,846
A5 Transfers between funds	-	-	-	-	-
A6 Cash funds last year end	9,966	-	-	9,966	12,812
Cash funds this year end	11,211.00	-	-	11,211	9,966

Section B Statement of assets and liabilities at the end of the period

Categories	Details	Unrestricted funds to nearest £	Restricted funds to nearest £	Endowment funds to nearest £
B1 Cash funds	Barclays Current Account	11,211	-	9,966
		-	-	-
		-	-	-
	Total cash funds	11,211	-	9,966
	(agree balances with receipts and payments account(s))	OK	OK	OK
		Unrestricted funds to nearest £	Restricted funds to nearest £	Endowment funds to nearest £
B2 Other monetary assets	Details	-	-	-
		-	-	-
		-	-	-
B3 Investment assets	Details	Fund to which asset belongs	Cost (optional)	Current value (optional)
			-	-
B4 Assets retained for the charity's own use	Details	Fund to which asset belongs	Cost (optional)	Current value (optional)
	Pavilion building and plant	-	-	-
	Audio Visual Equipment	Unrestricted		-
	Managed Network & WiFi System	Unrestricted		-
	Internal CCTV System	Unrestricted		-
	Glass Display Fridge	Unrestricted		-
	Commercial Kitchen Equipment	Unrestricted		-
	Outdoor Benches	Unrestricted		
	Storage Container x2	Unrestricted		
	Tables and Chairs	Unrestricted		-
	Aluminium Moveable goalposts	Unrestricted		-
	Rideon Mower & Push Mower	Unrestricted		
	External CCTV Cameras	Unrestricted		
	Additional Kitchen Equipment	Unrestricted		
	Handryers and Cistern Controllers	Unrestricted		
	Industrial Shelving	Unrestricted		
	Signage External & Internal	Unrestricted		
	Outdoor Gym Equipment	Unrestricted		-
B5 Liabilities	Details	Fund to which liability relates	Amount due (optional)	When due (optional)
			-	
			-	
			-	
			-	
Signed by one or two trustees on behalf of all the trustees	Signature	Print Name	Date of approval	
		Trevor Blackmore	15/01/2024	
		Ciaran McAuley	15/01/2024	