



Trustees' Annual Report for the period

	Period start date				Period end date		
From	01	04	2020	To	31	03	2021

Section A Reference and administration details

Charity name	Cardea Community Sports Association
Other names charity is known by	CCSA
Registered charity number (if any)	1167553
Charity's principal address	Bellona Drive, Cardea, South Stanground Peterborough Postcode PE2 8GP

Names of the charity trustees who manage the charity

	Trustee name	Office (if any)	Dates acted if not for whole year	Name of person (or body) entitled to appoint trustee (if any)
1	Ciaran McAuley			
2	Jason Holt			
3	Trevor Blackmore			
4	Jade Blackmore			
5	Peter Mathers			
6				
7				
8				
9				
10				
11				
12				
13				
14				
15				
16				
17				
18				
19				
20				

Names of the trustees for the charity, if any, (for example, any custodian trustees)

Name	Dates acted if not for whole year

Names and addresses of advisers (Optional information)

Type of adviser	Name	Address

Name of chief executive or names of senior staff members (Optional information)

--

Section B Structure, governance and management

Description of the charity's trusts

Type of governing document (eg. trust deed, constitution)	Constitution
How the charity is constituted (eg. trust, association, company)	Charitable Incorporated Organisation (CIO)
Trustee selection methods (eg. appointed by, elected by)	Elected By

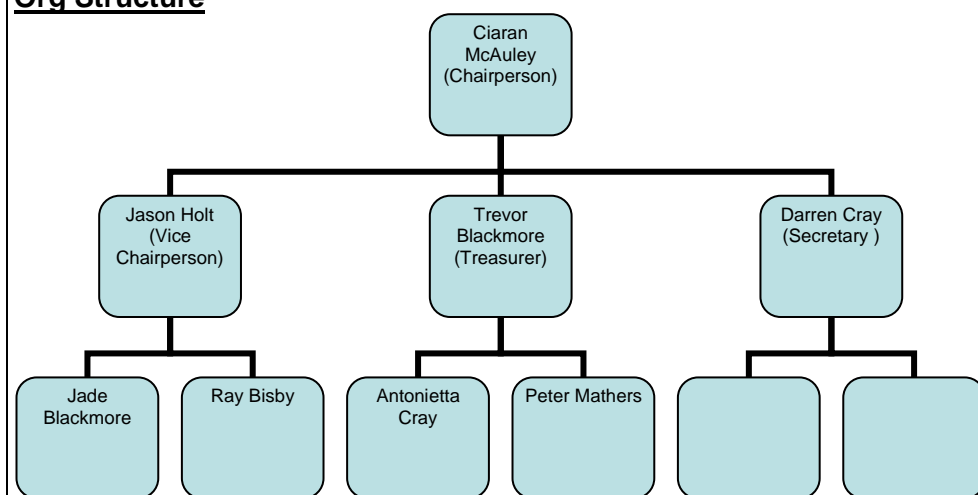
Additional governance issues (Optional information)

You **may choose** to include additional information, where relevant, about:

- policies and procedures adopted for the induction and training of trustees;
- the charity's organisational structure and any wider network with which the charity works;
- relationship with any related parties;
- trustees' consideration of major risks and the system and procedures to manage them.

- Monthly committee meeting of trustees & members including
 - Financial overview & performance
 - Adherence to aims & objectives
 - Risk & Issue overview
 - Customer overview & feedback
 - Strategy alignment
 - Future planning & road mapping

Org Structure



-

Section C Objectives and activities

Summary of the objects of the charity set out in its governing document

The CCSA will promote and provide facilities for various sports and groups for Cardea, Stanground and the wider Peterborough area.

- To offer coaching and sporting opportunities
- To promote the CCSA within the local community
- To manage the CCSA, facilities and finances
- To ensure a duty of care for all members of the CCSA
- To provide all services in a way that is fair to all residents regardless of age, sex or background
- To ensure that all present and future members receive full and equal treatment

Summary of the main activities undertaken for the public benefit in relation to these objects (include within this section the statutory declaration that trustees have had regard to the guidance issued by the Charity Commission on public benefit)

We continue to remain accessible to everyone and have a very healthy diverse number of different groups using our facilities. We continue to promote our aims and objective throughout our catchment area and beyond. Football clubs have used our facilities where possible. Finances have been managed in line with expectations and reinvested in our facilities by purchasing additional assets and equipment to further enhance peoples experience when they visit us.

Additional details of objectives and activities (Optional information)

You **may choose** to include further statements, where relevant, about:

- policy on grantmaking;
- policy programme related investment;
- contribution made by volunteers.

Section D

Achievements and performance

Summary of the main achievements of the charity during the year

Since coming back from the Pandemic we have seen not only the return of our partners but an increase in participation across the activities that we host.

Our indoor facilities have saw the newly formed mother & toddlers group supported by our partner the Cardea Community Church regularly meet up for soft play and tea and coffees bringing together members of the community. A fantastic initiative that we support and expect to grow further in popularity.

Our partners have also returned over the last year with renewed numbers and support with our Youth Dancewaves project providing dance classes weekly. We also have a “Sweaty Mamas” exercise class offering physical exercise opportunity each week. But we also cater for non-physical activities in our Little voices vocal coaching group offering a different type of activity for the community.

We continue to offer an occasional use of the facility for birthday parties and private functions / meetings and have facilitated Emergency first aid and CPR training events which have been very popular. We also host the annual Park Farm Pumas Christmas event including Santa’s grotto and the Cardea Community Church Christmas choir.

Our outdoor facility usage has again grown with our partner club Park Farm Pumas growing to 31 teams. This has seen footfall at the site increase on Saturday mornings with the Youth teams and Saturday afternoons with the adult team. Sundays have also seen an increase due to the new U18 teams that have been created.

We continue to explore improvement of the outdoor playing surfaces in partnership with Park Farm Pumas, The football Foundation and Peterborough city council and we are aiming to have the best surface in the city over the next 3 years.

In addition our previously installed outdoor gym sees regular usage and has become a focal point for exercise and recreational activity.

We aim to continue to support our existing partners, build new relationship with community groups as they are formed and make improvements to the facilities where possible to continue to provide the excellent offering in recent years.

Section E Financial review

Brief statement of the charity's policy on reserves

Once our charities activities have stabilised and we have stopped investing in assets, a reserve account will be created to support our future development plans of the site.

Details of any funds materially in deficit

Further financial review details (Optional information)

You **may choose** to include additional information, where relevant about:

- the charity's principal sources of funds (including any fundraising);
- how expenditure has supported the key objectives of the charity;
- investment policy and objectives including any ethical investment policy adopted.

Our principal source of income was significantly impacted by closures due to COVID-19. Room hire dropped by over 80% We received support from the Government by way of grants.

This allowed us to continue to invest in the facilities by purchasing further assets and equipment. We were also able to invest in the playing surface of our main pitch.

Section F Other optional information

Section G Declaration

The trustees declare that they have approved the trustees' report above.

Signed on behalf of the charity's trustees

Signature(s)		
Full name(s)	Ciaran McAuley	Trevor Blackmore
Position (eg Secretary, Chair, etc)	Chair	Treasurer
Date	17/01/2022	



CHARITY COMMISSION
FOR ENGLAND AND WALES

Charity Name
Cardea Community Sports Association

No (if any)
1167553

CC16a

Receipts and payments accounts

For the period from	Period start date	To	Period end date
	Apr-21		Mar-22

Section A Receipts and payments

	Unrestricted funds to the nearest £	Restricted funds to the nearest £	Endowment funds to the nearest £	Total funds to the nearest £	Last year to the nearest £
A1 Receipts					
Fundraising	-	-	-	-	-
Donations	-	-	-	-	3,000
Pitch Hire	1,270	-	-	1,270	1,810
Room Hire	14,810	-	-	14,810	2,385
Café Sales	5,434	-	-	5,434	559
Grants	3,000	-	-	3,000	27,891
	-	-	-	-	-
	-	-	-	-	-
Sub total (Gross income for AR)	24,514	-	-	24,514	35,645
A2 Asset and investment sales, (see table).					
	-	-	-	-	-
	-	-	-	-	-
Sub total	-	-	-	-	-
Total receipts	24,514	-	-	24,514	35,645
A3 Payments					
Cleaning	501	-	-	501	577
Professional Fees	-	-	-	-	-
Café Food & Beverage	3,890	-	-	3,890	442
Fundraising Costs	276	-	-	276	-
Insurance	448	-	-	448	392
Maintenance & Supplies	3,904	-	-	3,904	3,029
Utilities	3,061	-	-	3,061	2,049
IT Support	486	-	-	486	359
Pitch Maintenance	6,479	-	-	6,479	4,042
Business Rates	480	-	-	480	-
Sub total	19,525	-	-	19,525	10,890
A4 Asset and investment purchases, (see table)					
Equipment	3,922	-	-	3,922	11,016
Landscaping	3,913	-	-	3,913	-
Sub total	7,835	-	-	7,835	11,016
Total payments	27,360	-	-	27,360	21,906
Net of receipts/(payments)	- 2,846	-	-	- 2,846	13,739
A5 Transfers between funds	-	-	-	-	-
A6 Cash funds last year end	12,812	-	-	12,812	12,812
Cash funds this year end	9,966.00	-	-	9,966	26,551

Section B Statement of assets and liabilities at the end of the period

Categories	Details	Unrestricted funds to nearest £	Restricted funds to nearest £	Endowment funds to nearest £	
B1 Cash funds	Barclays Current Account	9,966	-	26,551	
		-	-	-	
		-	-	-	
	Total cash funds	9,966	-	26,551	
	(agree balances with receipts and payments account(s))	OK	OK	OK	
B2 Other monetary assets	Details	Unrestricted funds to nearest £	Restricted funds to nearest £	Endowment funds to nearest £	
		-	-	-	
		-	-	-	
		-	-	-	
B3 Investment assets	Details	Fund to which asset belongs	Cost (optional)	Current value (optional)	
			-	-	
			-	-	
B4 Assets retained for the charity's own use	Details	Fund to which asset belongs	Cost (optional)	Current value (optional)	
	Pavilion building and plant	-	-	-	
	Audio Visual Equipment	Unrestricted		-	
	Managed Network & WiFi System	Unrestricted		-	
	Internal CCTV System	Unrestricted		-	
	Glass Display Fridge	Unrestricted		-	
	Commercial Kitchen Equipment	Unrestricted		-	
	Outdoor Benches	Unrestricted			
	Storage Container x2	Unrestricted			
	Tables and Chairs	Unrestricted		-	
	Aluminium Moveable goalposts	Unrestricted		-	
	Rideon Mower & Push Mower	Unrestricted			
	External CCTV Cameras	Unrestricted			
	Additional Kitchen Equipment	Unrestricted			
	Handryers and Cistern Controllers	Unrestricted			
	Industrial Shelving	Unrestricted			
	Signage External & Internal	Unrestricted			
	Outdoor Gym Equipment	Unrestricted		-	
	B5 Liabilities	Details	Fund to which liability relates	Amount due (optional)	When due (optional)
				-	
			-		
			-		
			-		
			-		
Signed by one or two trustees on behalf of all the trustees	Signature	Print Name	Date of approval		
		Trevor Blackmore	20/01/2023		
		Ciaran McAuley	20/01/2023		
		31/01/2023			