

CARDEA COMMUNITY SPORTS ASSOCIATION

England & Wales · Charity number 1167553

Details

Other names CCSA

Status Registered

Legal form CIO

Registered 2016-06-08

Register [View on the Charity Commission register](#)

Contact

Address Cardea Community Sports Pavilion
Bellona Drive
Peterborough
PE2 8GP

Phone 07856290338

Email info@CardeaCSA.org

Website www.CardeaCSA.org

Activities

Objects: TO PROMOTE FOR THE BENEFIT OF THE INHABITANTS OF CARDEA, PARKFARM, STANGROUND, FARCET, FLETTON AND THE SURROUNDING AREAS IN THE CITY OF PETERBOROUGH THE PROVISION OF FACILITIES FOR RECREATION OR OTHER LEISURE TIME OCCUPATION OF INDIVIDUALS WHO HAVE NEED OF SUCH FACILITIES BY REASON OF THEIR YOUTH, AGE, INFIRMITY OR DISABLEMENT, FINANCIAL HARDSHIP OR SOCIAL AND ECONOMIC CIRCUMSTANCES OR FOR THE PUBLIC AT LARGE IN THE INTERESTS OF SOCIAL WELFARE AND WITH THE OBJECT OF IMPROVING THE CONDITION OF LIFE OF THE SAID INHABITANTS.

Activities: We offer the hire of a community sports pavilion and playing fields.

Classification

- **How:** Provides Buildings/facilities/open Space
- **What:** Amateur Sport, Recreation
- **Who:** The General Public/mankind

Geography

- Peterborough City

Finances

Period end	Income	Expenditure	Assets	Employees
2025-03-31	£17,925	£18,490	-	-
2024-03-31	£18,250	£20,982	-	-
2023-03-31	£21,306	£20,062	-	-
2022-03-31	£24,514	£27,360	-	-
2021-03-31	£35,645	£21,906	-	-

Trustees

Name	Role	Appointed
CIARAN DAVID MCAULEY	Chair	2015-11-01
Jade Blackmore		2017-05-08
TREVOR BLACKMORE		2015-11-01

CARDEA COMMUNITY SPORTS ASSOCIATION

England & Wales - Charity number 1167553

Accounts



Trustees' Annual Report for the period

	Period start date				Period end date		
From	01	04	2024	To	31	03	2025

Section A Reference and administration details

Charity name Cardea Community Sports Association

Other names charity is known by CCSA

Registered charity number (if any) 1167553

Charity's principal address

Bellona Drive,
 Cardea, South Stanground
 Peterborough
Postcode PE2 8GP

Names of the charity trustees who manage the charity

	Trustee name	Office (if any)	Dates acted if not for whole year	Name of person (or body) entitled to appoint trustee (if any)
1	Ciaran McAuley			
2	Trevor Blackmore			
3	Jade Blackmore			
4	Jason Holt		01/04/2024-01/01/2025	
5				
6				
7				
8				
9				
10				
11				
12				
13				
14				
15				
16				
17				
18				
19				
20				

Names of the trustees for the charity, if any, (for example, any custodian trustees)

Name	Dates acted if not for whole year

Names and addresses of advisers (Optional information)

Type of adviser	Name	Address

Name of chief executive or names of senior staff members (Optional information)

--

Section B Structure, governance and management

Description of the charity's trusts

Type of governing document <i>(eg. trust deed, constitution)</i>	Constitution
How the charity is constituted <i>(eg. trust, association, company)</i>	Charitable Incorporated Organisation (CIO)
Trustee selection methods <i>(eg. appointed by, elected by)</i>	Elected By

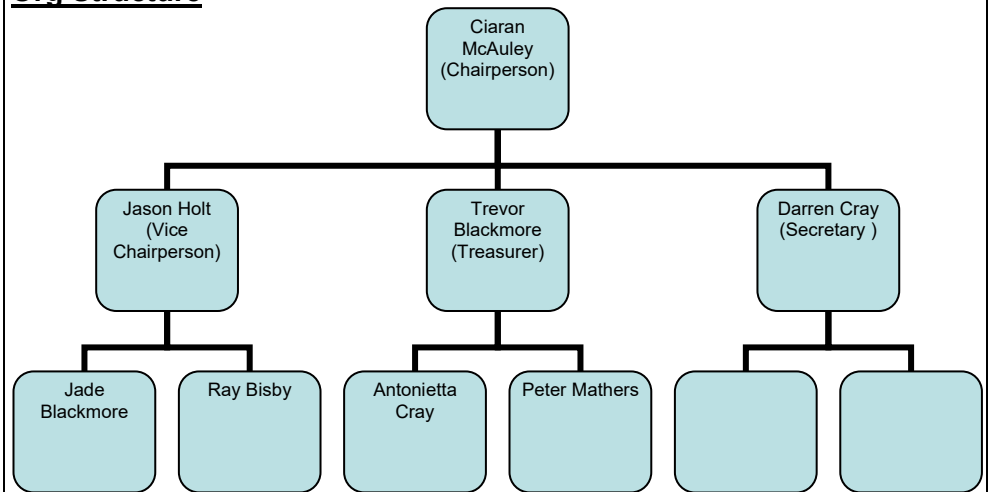
Additional governance issues (Optional information)

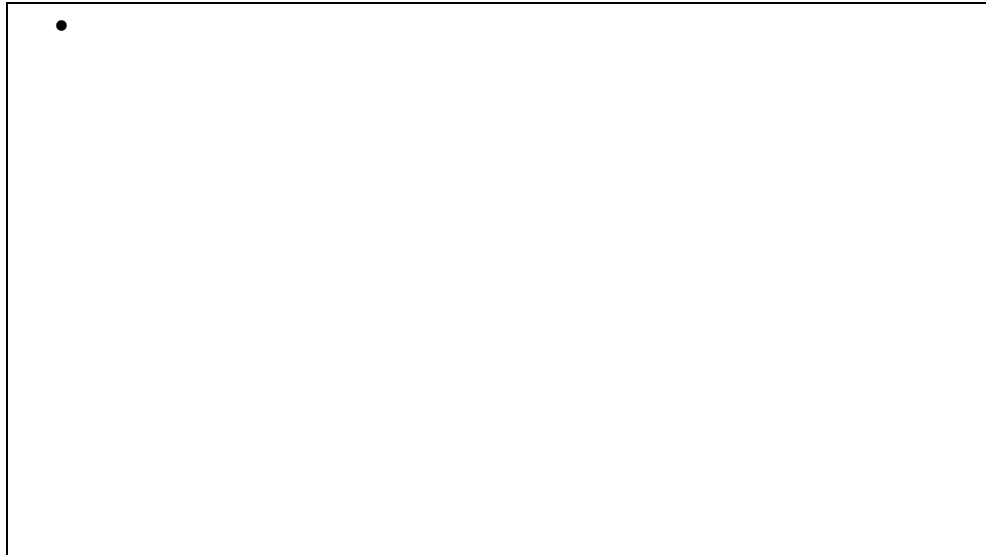
You **may choose** to include additional information, where relevant, about:

- policies and procedures adopted for the induction and training of trustees;
- the charity's organisational structure and any wider network with which the charity works;
- relationship with any related parties;
- trustees' consideration of major risks and the system and procedures to manage them.

- Monthly committee meeting of trustees & members including
 - Financial overview & performance
 - Adherence to aims & objectives
 - Risk & Issue overview
 - Customer overview & feedback
 - Strategy alignment
 - Future planning & road mapping

Org Structure





Section C

Objectives and activities

Summary of the objects of the charity set out in its governing document

The CCSA will promote and provide facilities for various sports and groups for Cardea, Stanground and the wider Peterborough area.

- To offer coaching and sporting opportunities
- To promote the CCSA within the local community
- To manage the CCSA, facilities and finances
- To ensure a duty of care for all members of the CCSA
- To provide all services in a way that is fair to all residents regardless of age, sex or background
- To ensure that all present and future members receive full and equal treatment

We continue to remain accessible to everyone and have a very healthy diverse number of different groups using our facilities. We continue to promote our aims and objective throughout our catchment area and beyond. Football clubs have used our facilities where possible. Finances have been managed in line with expectations and reinvested in our facilities by purchasing additional assets and equipment to further enhance peoples experience when they visit us.

Summary of the main activities undertaken for the public benefit in relation to these objects (include within this section the statutory declaration that trustees have had regard to the guidance issued by the Charity Commission on public benefit)

Additional details of objectives and activities (Optional information)

You **may choose** to include further statements, where relevant, about:

- policy on grantmaking;
- policy programme related investment;
- contribution made by volunteers.

Summary of the main achievements of the charity during the year

Room hire has been positive throughout the year with multiple groups continuing to use our facilities. This is more regular throughout school terms with the out of school groups.

Football pitch hire has been strong following on from the maintenance and repairs carried out throughout the year.

Section E

Financial review

Brief statement of the charity's policy on reserves

Once our charities activities have stabilised and we have stopped investing in assets, a reserve account will be created to support our future development plans of the site.

Details of any funds materially in deficit

Further financial review details (Optional information)

You **may choose** to include additional information, where relevant about:

- the charity's principal sources of funds (including any fundraising);
- how expenditure has supported the key objectives of the charity;
- investment policy and objectives including any ethical investment policy adopted.

As the building approaches its 9th year in operation, the fabric and equipment is aging at an expected pace and funds are being directed to support this.

There has been a significant increase in our utility costs. We have had to replace the flooring in the main room and plant room equipment will need replacing/repairing in the new year.

Funds will need to further directed towards future plant room repairs, repairs to the football dugs and areas of damage caused by vandalism. We have had a water bore hole installed and will be looking to invest in equipment to make use of it.

Section F

Other optional information

Section G

Declaration

The trustees declare that they have approved the trustees' report above.

Signed on behalf of the charity's trustees

Signature(s)		
Full name(s)	Ciaran McAuley	Trevor Blackmore
Position (eg Secretary, Chair, etc)	Chair	Treasurer
Date	04/01/2026	



CHARITY COMMISSION
FOR ENGLAND AND WALES

Charity Name Cardea Community Sports Association	No (if any) 1167553
--	-------------------------------

CC16a

Receipts and payments accounts

For the period from	Period start date Apr-24	To	Period end date Mar-25
---------------------	-----------------------------	----	---------------------------

Section A Receipts and payments

	Unrestricted funds to the nearest £	Restricted funds to the nearest £	Endowment funds to the nearest £	Total funds to the nearest £	Last year to the nearest £
A1 Receipts					
Fundraising	-	-	-	-	-
Donations	-	-	-	-	-
Pitch Hire	2,100	-	-	2,100	2,450
Room Hire	14,100	-	-	14,100	13,500
Café Sales	1,725	-	-	1,725	2,300
Grants	-	-	-	-	-
	-	-	-	-	-
	-	-	-	-	-
Sub total (Gross income for AR)	17,925	-	-	17,925	18,250
A2 Asset and investment sales, (see table).					
	-	-	-	-	-
	-	-	-	-	-
Sub total	-	-	-	-	-
Total receipts	17,925	-	-	17,925	18,250
A3 Payments					
Cleaning	753	-	-	753	958
Professional Fees	-	-	-	-	-
Café Food & Beverage	1,513	-	-	1,513	1,980
Fundraising Costs	-	-	-	-	-
Insurance	405	-	-	405	405
Maintenance & Supplies	7,580	-	-	7,580	8,240
Utilities	5,270	-	-	5,270	5,725
IT Support	1,154	-	-	1,154	1,250
Pitch Maintenance	1,815	-	-	1,815	2,424
Business Rates	-	-	-	-	-
Sub total	18,490	-	-	18,490	20,982
A4 Asset and investment purchases, (see table)					
Equipment		-	-	-	-
Landscaping		-	-	-	-
Sub total	-	-	-	-	-
Total payments	18,490	-	-	18,490	20,982
Net of receipts/(payments)	- 565	-	-	- 565	- 2,732
A5 Transfers between funds	-	-	-	-	-
A6 Cash funds last year end	7,234	-	-	7,234	9,966
Cash funds this year end	6,669	-	-	6,669	7,234

Section B Statement of assets and liabilities at the end of the period

Categories	Details	Unrestricted funds to nearest £	Restricted funds to nearest £	Endowment funds to nearest £
B1 Cash funds	Barclays Current Account	6,669	-	7,234
		-	-	-
		-	-	-
	Total cash funds	6,669	-	7,234
	(agree balances with receipts and payments account(s))	OK	OK	OK
B2 Other monetary assets	Details	Unrestricted funds to nearest £	Restricted funds to nearest £	Endowment funds to nearest £
		-	-	-
		-	-	-
B3 Investment assets	Details	Fund to which asset belongs	Cost (optional)	Current value (optional)
			-	-
B4 Assets retained for the charity's own use	Details	Fund to which asset belongs	Cost (optional)	Current value (optional)
	Pavilion building and plant	-	-	-
	Audio Visual Equipment	Unrestricted		-
	Managed Network & WiFi System	Unrestricted		-
	Internal CCTV System	Unrestricted		-
	Glass Display Fridge	Unrestricted		-
	Commercial Kitchen Equipment	Unrestricted		-
	Outdoor Benches	Unrestricted		
	Storage Container x2	Unrestricted		
	Tables and Chairs	Unrestricted		-
	Aluminium Moveable goalposts	Unrestricted		-
	Rideon Mower & Push Mower	Unrestricted		
	External CCTV Cameras	Unrestricted		
	Additional Kitchen Equipment	Unrestricted		
	Handryers and Cistern Controllers	Unrestricted		
	Industrial Shelving	Unrestricted		
Signage External & Internal	Unrestricted			
Outdoor Gym Equipment	Unrestricted		-	
B5 Liabilities	Details	Fund to which liability relates	Amount due (optional)	When due (optional)
			-	
			-	
			-	
			-	
Signed by one or two trustees on behalf of all the trustees	Signature	Print Name	Date of approval	
		Trevor Blackmore	04/01/2026	
		Ciaran McAuley	04/01/2026	

CARDEA COMMUNITY SPORTS ASSOCIATION

England & Wales - Charity number 1167553

Accounts



Trustees' Annual Report for the period

From	Period start date			To	Period end date		
	01	04	2023		31	03	2024

Section A Reference and administration details

Charity name

Cardea Community Sports Association

Other names charity is known by

CCSA

Registered charity number (if any)

1167553

Charity's principal address

Bellona Drive,
Cardea, South Stanground
Peterborough
Postcode PE2 8GP

Names of the charity trustees who manage the charity

	Trustee name	Office (if any)	Dates acted if not for whole year	Name of person (or body) entitled to appoint trustee (if any)
1	Ciaran McAuley			
2	Jason Holt			
3	Trevor Blackmore			
4	Jade Blackmore			
5				
6				
7				
8				
9				
10				
11				
12				
13				
14				
15				
16				
17				
18				
19				
20				

Names of the trustees for the charity, if any, (for example, any custodian trustees)

Name	Dates acted if not for whole year

Names and addresses of advisers (Optional information)

Type of adviser	Name	Address

Name of chief executive or names of senior staff members (Optional information)

--

Section B Structure, governance and management

Description of the charity's trusts

Type of governing document (eg. trust deed, constitution)	Constitution
How the charity is constituted (eg. trust, association, company)	Charitable Incorporated Organisation (CIO)
Trustee selection methods (eg. appointed by, elected by)	Elected By

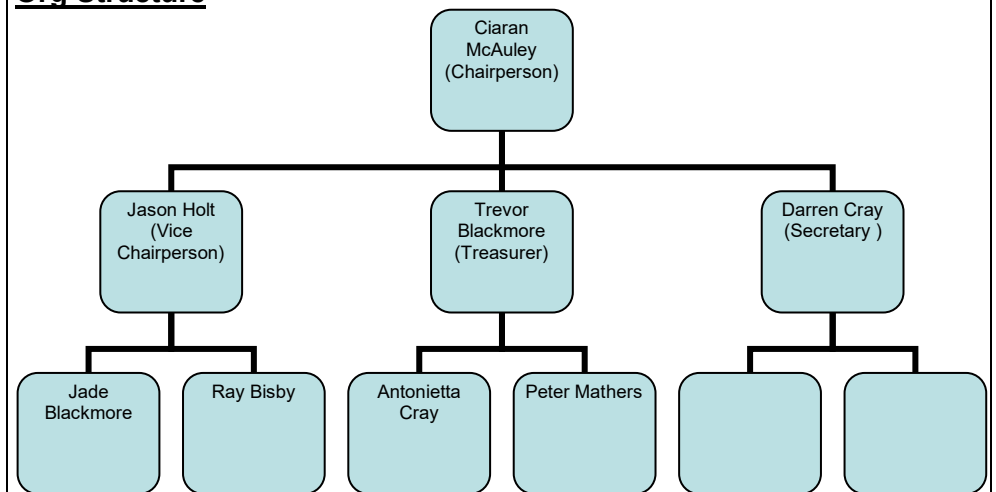
Additional governance issues (Optional information)

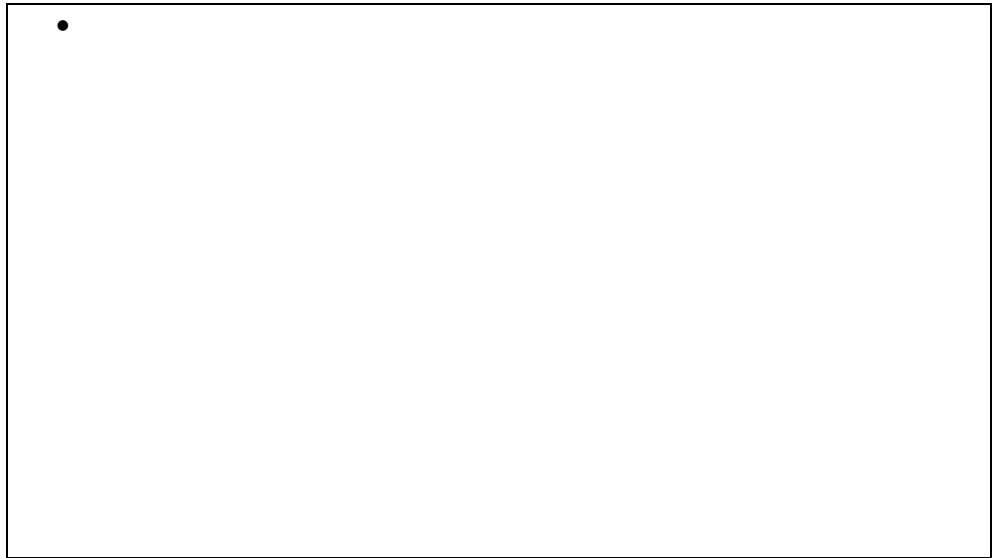
You **may choose** to include additional information, where relevant, about:

- policies and procedures adopted for the induction and training of trustees;
- the charity's organisational structure and any wider network with which the charity works;
- relationship with any related parties;
- trustees' consideration of major risks and the system and procedures to manage them.

- Monthly committee meeting of trustees & members including
 - Financial overview & performance
 - Adherence to aims & objectives
 - Risk & Issue overview
 - Customer overview & feedback
 - Strategy alignment
 - Future planning & road mapping

Org Structure





Section C

Objectives and activities

Summary of the objects of the charity set out in its governing document

The CCSA will promote and provide facilities for various sports and groups for Cardea, Stanground and the wider Peterborough area.

- To offer coaching and sporting opportunities
- To promote the CCSA within the local community
- To manage the CCSA, facilities and finances
- To ensure a duty of care for all members of the CCSA
- To provide all services in a way that is fair to all residents regardless of age, sex or background
- To ensure that all present and future members receive full and equal treatment

We continue to remain accessible to everyone and have a very healthy diverse number of different groups using our facilities. We continue to promote our aims and objective throughout our catchment area and beyond. Football clubs have used our facilities where possible. Finances have been managed in line with expectations and reinvested in our facilities by purchasing additional assets and equipment to further enhance peoples experience when they visit us.

Summary of the main activities undertaken for the public benefit in relation to these objects (include within this section the statutory declaration that trustees have had regard to the guidance issued by the Charity Commission on public benefit)

Additional details of objectives and activities (Optional information)

You **may choose** to include further statements, where relevant, about:

- policy on grantmaking;
- policy programme related investment;
- contribution made by volunteers.

Summary of the main achievements of the charity during the year

Room hire has been positive throughout the year with multiple groups continuing to use our facilities. This is more regular throughout school terms with the out of school groups.

Football pitch hire has been strong following on from the maintenance and repairs carried out in the previous year.

We have not seen any grant funding available to us in 2023/2024 and we continue to look for avenues of additional funding for reinvestment.

Section E

Financial review

Brief statement of the charity's policy on reserves

Once our charities activities have stabilised and we have stopped investing in assets, a reserve account will be created to support our future development plans of the site.

Details of any funds materially in deficit

Further financial review details (Optional information)

You **may choose** to include additional information, where relevant about:

- the charity's principal sources of funds (including any fundraising);
- how expenditure has supported the key objectives of the charity;
- investment policy and objectives including any ethical investment policy adopted.

As the building approaches its 8th year in operation, the fabric and equipment is aging at an expected pace and funds are being directed to support this.

There has been a significant increase in our utility costs. Electricity has nearly doubled, our discount on Internet has ended, cleaning costs have increased and PCC have begun charging us for waste collections (previously offered FOC).

Funds will need to further directed towards future plant room repairs, repairs to the football dugs and areas of damage caused by vandalism. We will be investing in a water borehole allowing us to irrigate the pitches for the cost of running a pump.

Section F

Other optional information

Section G

Declaration

The trustees declare that they have approved the trustees' report above.

Signed on behalf of the charity's trustees

Signature(s)		
Full name(s)	Ciaran McAuley	Trevor Blackmore
Position (eg Secretary, Chair, etc)	Chair	Treasurer

Date 04/01/2025



CHARITY COMMISSION
FOR ENGLAND AND WALES

Charity Name Cardea Community Sports Association	No (if any) 1167553
--	-------------------------------

CC16a

Receipts and payments accounts

For the period from	Period start date Apr-23	To	Period end date Mar-24
------------------------	-----------------------------	----	---------------------------

Section A Receipts and payments

	Unrestricted funds to the nearest £	Restricted funds to the nearest £	Endowment funds to the nearest £	Total funds to the nearest £	Last year to the nearest £
A1 Receipts					
Fundraising	-	-	-	-	-
Donations	-	-	-	-	-
Pitch Hire	2,450	-	-	2,450	2,925
Room Hire	13,500	-	-	13,500	15,715
Café Sales	2,300	-	-	2,300	2,666
Grants	-	-	-	-	-
	-	-	-	-	-
Sub total (Gross income for AR)	18,250	-	-	18,250	21,306
A2 Asset and investment sales, (see table).					
	-	-	-	-	-
	-	-	-	-	-
Sub total	-	-	-	-	-
Total receipts	18,250	-	-	18,250	21,306
A3 Payments					
Cleaning	958	-	-	958	1,106
Professional Fees	-	-	-	-	-
Café Food & Beverage	1,980	-	-	1,980	2,843
Fundraising Costs	-	-	-	-	-
Insurance	405	-	-	405	392
Maintenance & Supplies	8,240	-	-	8,240	6,286
Utilities	5,725	-	-	5,725	6,170
IT Support	1,250	-	-	1,250	1,056
Pitch Maintenance	2,424	-	-	2,424	2,208
Business Rates	-	-	-	-	-
Sub total	20,982	-	-	20,982	20,061
A4 Asset and investment purchases. (see table)					
Equipment	-	-	-	-	-
Landscaping	-	-	-	-	-
Sub total	-	-	-	-	-
Total payments	20,982	-	-	20,982	20,061
Net of receipts/(payments)	- 2,732	-	-	- 2,732	1,245
A5 Transfers between funds	-	-	-	-	-
A6 Cash funds last year end	9,966	-	-	9,966	9,966
Cash funds this year end	7,234.09	-	-	7,234	11,211

Section B Statement of assets and liabilities at the end of the period

Categories	Details	Unrestricted funds to nearest £	Restricted funds to nearest £	Endowment funds to nearest £
B1 Cash funds	Barclays Current Account	7,234	-	11,211
		-	-	-
		-	-	-
	Total cash funds	7,234	-	11,211
	(agree balances with receipts and payments account(s))	OK	OK	OK
B2 Other monetary assets	Details	-	-	-
		-	-	-
		-	-	-
B3 Investment assets	Details	-	-	-
		-	-	-
B4 Assets retained for the charity's own use	Details	-	-	-
	Pavilion building and plant	-	-	-
	Audio Visual Equipment	Unrestricted	-	-
	Managed Network & WiFi System	Unrestricted	-	-
	Internal CCTV System	Unrestricted	-	-
	Glass Display Fridge	Unrestricted	-	-
	Commercial Kitchen Equipment	Unrestricted	-	-
	Outdoor Benches	Unrestricted	-	-
	Storage Container x2	Unrestricted	-	-
	Tables and Chairs	Unrestricted	-	-
	Aluminium Moveable goalposts	Unrestricted	-	-
	Rideon Mower & Push Mower	Unrestricted	-	-
	External CCTV Cameras	Unrestricted	-	-
	Additional Kitchen Equipment	Unrestricted	-	-
	Handryers and Cistern Controllers	Unrestricted	-	-
	Industrial Shelving	Unrestricted	-	-
Signage External & Internal	Unrestricted	-	-	
Outdoor Gym Equipment	Unrestricted	-	-	
B5 Liabilities	Details	-	-	-
		-	-	-
		-	-	-
		-	-	-
		-	-	-
Signed by one or two trustees on behalf of all the trustees	Signature	Print Name	Date of approval	
		Trevor Blackmore	04/01/2025	
		Ciaran McAuley	04/01/2025	

CARDEA COMMUNITY SPORTS ASSOCIATION

England & Wales - Charity number 1167553

Accounts



Trustees' Annual Report for the period

From	Period start date			To	Period end date		
	01	04	2022		31	03	2023

Section A Reference and administration details

Charity name

Cardea Community Sports Association

Other names charity is known by

CCSA

Registered charity number (if any)

1167553

Charity's principal address

Bellona Drive,
Cardea, South Stanground
Peterborough
Postcode PE2 8GP

Names of the charity trustees who manage the charity

	Trustee name	Office (if any)	Dates acted if not for whole year	Name of person (or body) entitled to appoint trustee (if any)
1	Ciaran McAuley			
2	Jason Holt			
3	Trevor Blackmore			
4	Jade Blackmore			
5	Peter Mathers			
6				
7				
8				
9				
10				
11				
12				
13				
14				
15				
16				
17				
18				
19				
20				

Names of the trustees for the charity, if any, (for example, any custodian trustees)

Name	Dates acted if not for whole year

Names and addresses of advisers (Optional information)

Type of adviser	Name	Address

Name of chief executive or names of senior staff members (Optional information)

--

Section B Structure, governance and management

Description of the charity's trusts

Type of governing document (eg. trust deed, constitution)	Constitution
How the charity is constituted (eg. trust, association, company)	Charitable Incorporated Organisation (CIO)
Trustee selection methods (eg. appointed by, elected by)	Elected By

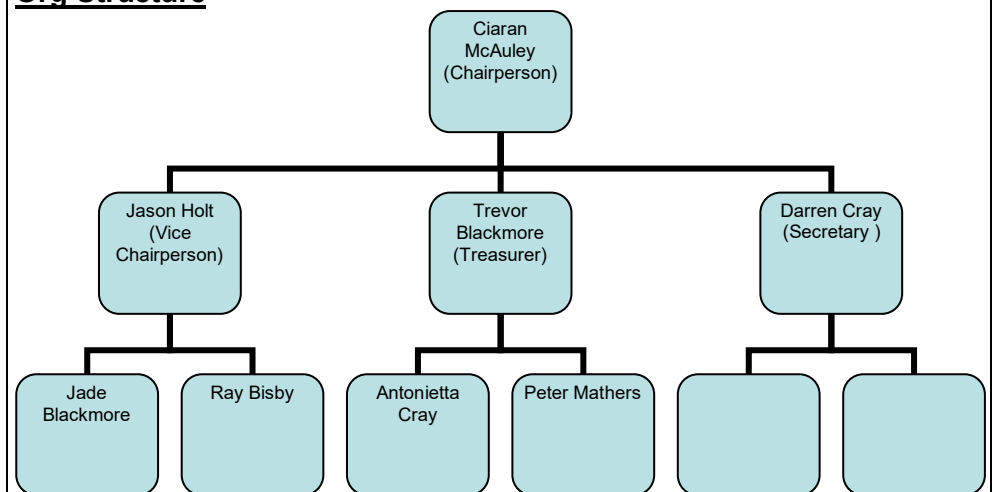
Additional governance issues (Optional information)

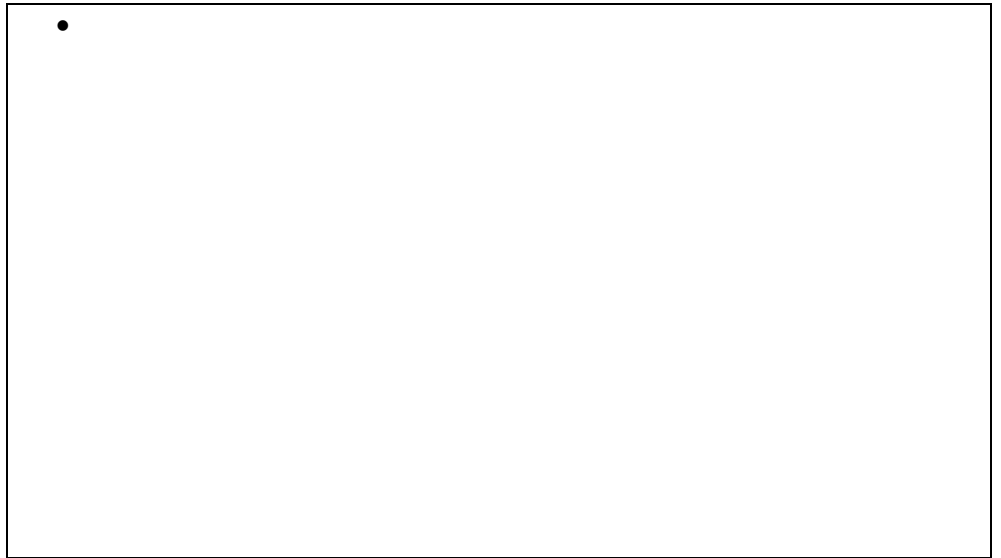
You **may choose** to include additional information, where relevant, about:

- policies and procedures adopted for the induction and training of trustees;
- the charity's organisational structure and any wider network with which the charity works;
- relationship with any related parties;
- trustees' consideration of major risks and the system and procedures to manage them.

- Monthly committee meeting of trustees & members including
 - Financial overview & performance
 - Adherence to aims & objectives
 - Risk & Issue overview
 - Customer overview & feedback
 - Strategy alignment
 - Future planning & road mapping

Org Structure





Section C

Objectives and activities

Summary of the objects of the charity set out in its governing document

The CCSA will promote and provide facilities for various sports and groups for Cardea, Stanground and the wider Peterborough area.

- To offer coaching and sporting opportunities
- To promote the CCSA within the local community
- To manage the CCSA, facilities and finances
- To ensure a duty of care for all members of the CCSA
- To provide all services in a way that is fair to all residents regardless of age, sex or background
- To ensure that all present and future members receive full and equal treatment

We continue to remain accessible to everyone and have a very healthy diverse number of different groups using our facilities. We continue to promote our aims and objective throughout our catchment area and beyond. Football clubs have used our facilities where possible. Finances have been managed in line with expectations and reinvested in our facilities by purchasing additional assets and equipment to further enhance peoples experience when they visit us.

Summary of the main activities undertaken for the public benefit in relation to these objects (include within this section the statutory declaration that trustees have had regard to the guidance issued by the Charity Commission on public benefit)

Additional details of objectives and activities (Optional information)

You **may choose** to include further statements, where relevant, about:

- policy on grantmaking;
- policy programme related investment;
- contribution made by volunteers.

Summary of the main achievements of the charity during the year

Room hire has been positive throughout the year with multiple groups continuing to use our facilities. This is more regular throughout school terms with the out of school groups.

Football pitch hire has been strong following on from the maintenance and repairs carried out in the previous year.

We have not seen any grant funding available to us in 2022/2023 and we continue to look for avenues of additional funding for reinvestment.

Section E

Financial review

Brief statement of the charity's policy on reserves

Once our charities activities have stabilised and we have stopped investing in assets, a reserve account will be created to support our future development plans of the site.

Details of any funds materially in deficit

Further financial review details (Optional information)

You **may choose** to include additional information, where relevant about:

- the charity's principal sources of funds (including any fundraising);
- how expenditure has supported the key objectives of the charity;
- investment policy and objectives including any ethical investment policy adopted.

As the building approaches its 7th year in operation, the fabric and equipment is aging at an expected pace and funds are being directed to support this.

There has been a significant increase in our utility costs. Electricity has nearly doubled, our discount on Internet has ended, cleaning costs have increased and PCC have begun charging us for waste collections (previously offered FOC).

Funds will need to further directed towards future plant room repairs, repairs to the football dugs and areas of damage caused by vandalism.

Section F

Other optional information

Section G

Declaration

The trustees declare that they have approved the trustees' report above.

Signed on behalf of the charity's trustees

Signature(s)		
Full name(s)	Ciaran McAuley	Trevor Blackmore
Position (eg Secretary, Chair, etc)	Chair	Treasurer

Date 17/01/2024



CHARITY COMMISSION
FOR ENGLAND AND WALES

Charity Name Cardea Community Sports Association	No (if any) 1167553
--	-------------------------------

CC16a

Receipts and payments accounts

For the period from	Period start date Apr-22	To	Period end date Mar-23
------------------------	-----------------------------	----	---------------------------

Section A Receipts and payments

	Unrestricted funds to the nearest £	Restricted funds to the nearest £	Endowment funds to the nearest £	Total funds to the nearest £	Last year to the nearest £
A1 Receipts					
Fundraising	-	-	-	-	-
Donations	-	-	-	-	-
Pitch Hire	2,925	-	-	2,925	1,270
Room Hire	15,715	-	-	15,715	14,810
Café Sales	2,666	-	-	2,666	5,434
Grants	-	-	-	-	3,000
	-	-	-	-	-
	-	-	-	-	-
Sub total (Gross income for AR)	21,306	-	-	21,306	24,514
A2 Asset and investment sales, (see table).					
	-	-	-	-	-
	-	-	-	-	-
Sub total	-	-	-	-	-
Total receipts	21,306	-	-	21,306	24,514
A3 Payments					
Cleaning	1,105	-	-	1,105	501
Professional Fees	-	-	-	-	-
Café Food & Beverage	2,844	-	-	2,844	3,890
Fundraising Costs	-	-	-	-	276
Insurance	392	-	-	392	448
Maintenance & Supplies	6,286	-	-	6,286	3,904
Utilities	6,170	-	-	6,170	3,061
IT Support	1,056	-	-	1,056	486
Pitch Maintenance	2,208	-	-	2,208	6,479
Business Rates	-	-	-	-	480
Sub total	20,062	-	-	20,062	19,525
A4 Asset and investment purchases. (see table)					
Equipment	-	-	-	-	3,922
Landscaping	-	-	-	-	3,913
Sub total	-	-	-	-	7,835
Total payments	20,062	-	-	20,062	27,360
Net of receipts/(payments)	1,245	-	-	1,245	- 2,846
A5 Transfers between funds	-	-	-	-	-
A6 Cash funds last year end	9,966	-	-	9,966	12,812
Cash funds this year end	11,211.00	-	-	11,211	9,966

Section B Statement of assets and liabilities at the end of the period

Categories	Details	Unrestricted funds to nearest £	Restricted funds to nearest £	Endowment funds to nearest £
B1 Cash funds	Barclays Current Account	11,211	-	9,966
		-	-	-
		-	-	-
	Total cash funds	11,211	-	9,966
	(agree balances with receipts and payments account(s))	OK	OK	OK
B2 Other monetary assets	Details	-	-	-
		-	-	-
		-	-	-
B3 Investment assets	Details	-	-	-
		-	-	-
B4 Assets retained for the charity's own use	Details	-	-	-
	Pavilion building and plant	-	-	-
	Audio Visual Equipment	Unrestricted	-	-
	Managed Network & WiFi System	Unrestricted	-	-
	Internal CCTV System	Unrestricted	-	-
	Glass Display Fridge	Unrestricted	-	-
	Commercial Kitchen Equipment	Unrestricted	-	-
	Outdoor Benches	Unrestricted	-	-
	Storage Container x2	Unrestricted	-	-
	Tables and Chairs	Unrestricted	-	-
	Aluminium Moveable goalposts	Unrestricted	-	-
	Rideon Mower & Push Mower	Unrestricted	-	-
	External CCTV Cameras	Unrestricted	-	-
	Additional Kitchen Equipment	Unrestricted	-	-
	Handryers and Cistern Controllers	Unrestricted	-	-
	Industrial Shelving	Unrestricted	-	-
Signage External & Internal	Unrestricted	-	-	
Outdoor Gym Equipment	Unrestricted	-	-	
B5 Liabilities	Details	-	-	-
		-	-	-
		-	-	-
		-	-	-
		-	-	-
Signed by one or two trustees on behalf of all the trustees	Signature	Print Name	Date of approval	
		Trevor Blackmore	15/01/2024	
		Ciaran McAuley	15/01/2024	

CARDEA COMMUNITY SPORTS ASSOCIATION

England & Wales - Charity number 1167553

Accounts



Trustees' Annual Report for the period

From	Period start date			To	Period end date		
	01	04	2020		31	03	2021

Section A Reference and administration details

Charity name Cardea Community Sports Association

Other names charity is known by CCSA

Registered charity number (if any) 1167553

Charity's principal address

Bellona Drive,
 Cardea, South Stanground
 Peterborough
Postcode PE2 8GP

Names of the charity trustees who manage the charity

	Trustee name	Office (if any)	Dates acted if not for whole year	Name of person (or body) entitled to appoint trustee (if any)
1	Ciaran McAuley			
2	Jason Holt			
3	Trevor Blackmore			
4	Jade Blackmore			
5	Peter Mathers			
6				
7				
8				
9				
10				
11				
12				
13				
14				
15				
16				
17				
18				
19				
20				

Names of the trustees for the charity, if any, (for example, any custodian trustees)

Name	Dates acted if not for whole year

Names and addresses of advisers (Optional information)

Type of adviser	Name	Address

Name of chief executive or names of senior staff members (Optional information)

--

Section B Structure, governance and management

Description of the charity's trusts

Type of governing document (eg. trust deed, constitution)	Constitution
How the charity is constituted (eg. trust, association, company)	Charitable Incorporated Organisation (CIO)
Trustee selection methods (eg. appointed by, elected by)	Elected By

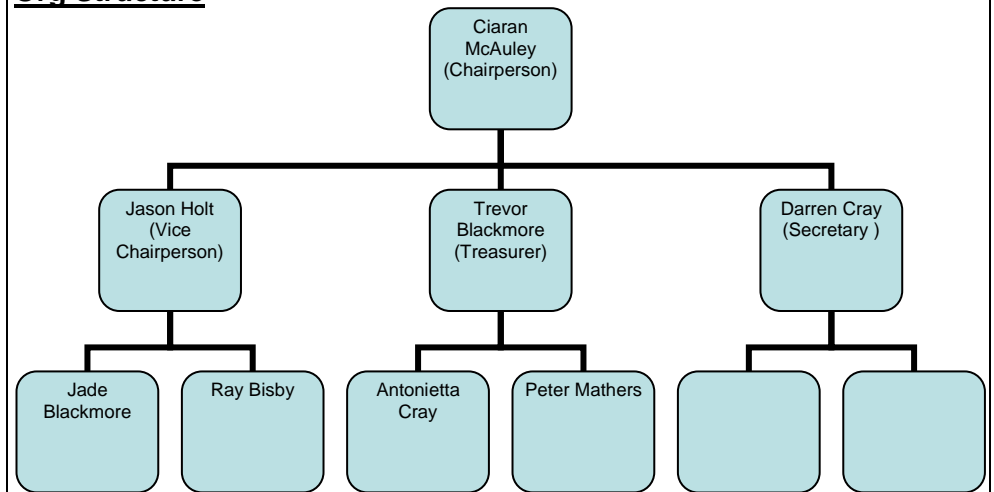
Additional governance issues (Optional information)

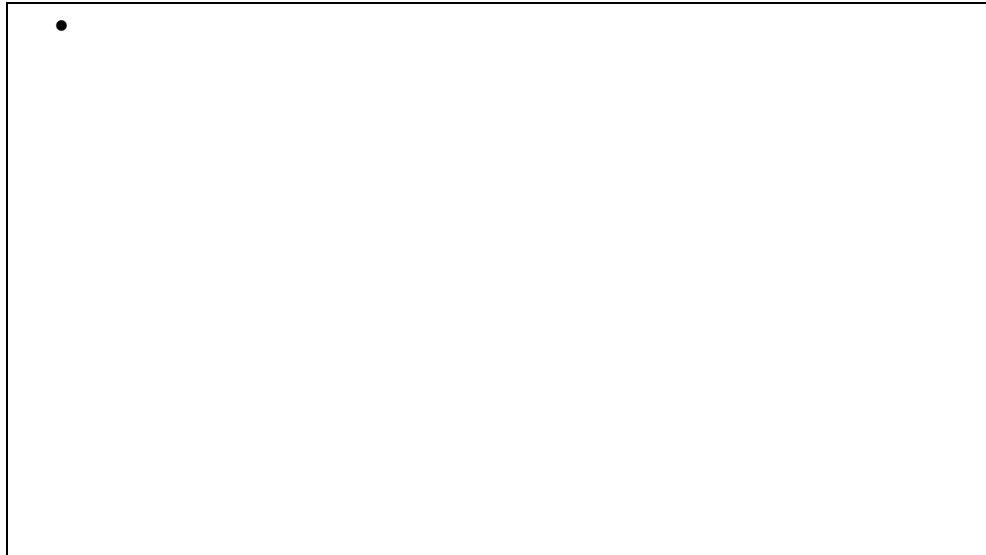
You **may choose** to include additional information, where relevant, about:

- policies and procedures adopted for the induction and training of trustees;
- the charity's organisational structure and any wider network with which the charity works;
- relationship with any related parties;
- trustees' consideration of major risks and the system and procedures to manage them.

- Monthly committee meeting of trustees & members including
 - Financial overview & performance
 - Adherence to aims & objectives
 - Risk & Issue overview
 - Customer overview & feedback
 - Strategy alignment
 - Future planning & road mapping

Org Structure





Section C Objectives and activities

Summary of the objects of the charity set out in its governing document

The CCSA will promote and provide facilities for various sports and groups for Cardea, Stanground and the wider Peterborough area.

- To offer coaching and sporting opportunities
- To promote the CCSA within the local community
- To manage the CCSA, facilities and finances
- To ensure a duty of care for all members of the CCSA
- To provide all services in a way that is fair to all residents regardless of age, sex or background
- To ensure that all present and future members receive full and equal treatment

We continue to remain accessible to everyone and have a very healthy diverse number of different groups using our facilities. We continue to promote our aims and objective throughout our catchment area and beyond. Football clubs have used our facilities where possible. Finances have been managed in line with expectations and reinvested in our facilities by purchasing additional assets and equipment to further enhance peoples experience when they visit us.

Summary of the main activities undertaken for the public benefit in relation to these objects (include within this section the statutory declaration that trustees have had regard to the guidance issued by the Charity Commission on public benefit)

Additional details of objectives and activities (Optional information)

You **may choose** to include further statements, where relevant, about:

- policy on grantmaking;
- policy programme related investment;
- contribution made by volunteers.

Summary of the main achievements of the charity during the year

Since coming back from the Pandemic we have seen not only the return of our partners but an increase in participation across the activities that we host.

Our indoor facilities have saw the newly formed mother & toddlers group supported by our partner the Cardea Community Church regularly meet up for soft play and tea and coffees bringing together members of the community. A fantastic initiative that we support and expect to grow further in popularity.

Our partners have also returned over the last year with renewed numbers and support with our Youth Dancewaves project providing dance classes weekly. We also have a “Sweaty Mamas” exercise class offering physical exercise opportunity each week. But we also cater for non-physical activities in our Little voices vocal coaching group offering a different type of activity for the community.

We continue to offer an occasional use of the facility for birthday parties and private functions / meetings and have facilitated Emergency first aid and CPR training events which have been very popular. We also host the annual Park Farm Pumas Christmas event including Santa’s grotto and the Cardea Community Church Christmas choir.

Our outdoor facility usage has again grown with our partner club Park Farm Pumas growing to 31 teams. This has seen footfall at the site increase on Saturday mornings with the Youth teams and Saturday afternoons with the adult team. Sundays have also seen an increase due to the new U18 teams that have been created.

We continue to explore improvement of the outdoor playing surfaces in partnership with Park Farm Pumas, The football Foundation and Peterborough city council and we are aiming to have the best surface in the city over the next 3 years.

In addition our previously installed outdoor gym sees regular usage and has become a focal point for exercise and recreational activity.

We aim to continue to support our existing partners, build new relationship with community groups as they are formed and make improvements to the facilities where possible to continue to provide the excellent offering in recent years.

Section E

Financial review

Brief statement of the charity's policy on reserves

Once our charities activities have stabilised and we have stopped investing in assets, a reserve account will be created to support our future development plans of the site.

Details of any funds materially in deficit

Further financial review details (Optional information)

You **may choose** to include additional information, where relevant about:

- the charity's principal sources of funds (including any fundraising);
- how expenditure has supported the key objectives of the charity;
- investment policy and objectives including any ethical investment policy adopted.

Our principal source of income was significantly impacted by closures due to COVID-19. Room hire dropped by over 80% We received support from the Government by way of grants.

This allowed us to continue to invest in the facilities by purchasing further assets and equipment. We were also able to invest in the playing surface of our main pitch.

Section F

Other optional information

Section G

Declaration

The trustees declare that they have approved the trustees' report above.

Signed on behalf of the charity's trustees

Signature(s)		
Full name(s)	Ciaran McAuley	Trevor Blackmore
Position (eg Secretary, Chair, etc)	Chair	Treasurer
Date	17/01/2022	



CHARITY COMMISSION
FOR ENGLAND AND WALES

Charity Name Cardea Community Sports Association	No (if any) 1167553
--	-------------------------------

CC16a

Receipts and payments accounts

For the period from	Period start date Apr-21	To	Period end date Mar-22
---------------------	-----------------------------	----	---------------------------

Section A Receipts and payments

	Unrestricted funds to the nearest £	Restricted funds to the nearest £	Endowment funds to the nearest £	Total funds to the nearest £	Last year to the nearest £
A1 Receipts					
Fundraising	-	-	-	-	-
Donations	-	-	-	-	3,000
Pitch Hire	1,270	-	-	1,270	1,810
Room Hire	14,810	-	-	14,810	2,385
Café Sales	5,434	-	-	5,434	559
Grants	3,000	-	-	3,000	27,891
	-	-	-	-	-
	-	-	-	-	-
Sub total (Gross income for AR)	24,514	-	-	24,514	35,645
A2 Asset and investment sales, (see table).					
	-	-	-	-	-
	-	-	-	-	-
Sub total	-	-	-	-	-
Total receipts	24,514	-	-	24,514	35,645
A3 Payments					
Cleaning	501	-	-	501	577
Professional Fees	-	-	-	-	-
Café Food & Beverage	3,890	-	-	3,890	442
Fundraising Costs	276	-	-	276	-
Insurance	448	-	-	448	392
Maintenance & Supplies	3,904	-	-	3,904	3,029
Utilities	3,061	-	-	3,061	2,049
IT Support	486	-	-	486	359
Pitch Maintenance	6,479	-	-	6,479	4,042
Business Rates	480	-	-	480	-
Sub total	19,525	-	-	19,525	10,890
A4 Asset and investment purchases, (see table)					
Equipment	3,922	-	-	3,922	11,016
Landscaping	3,913	-	-	3,913	-
Sub total	7,835	-	-	7,835	11,016
Total payments	27,360	-	-	27,360	21,906
Net of receipts/(payments)	- 2,846	-	-	- 2,846	13,739
A5 Transfers between funds	-	-	-	-	-
A6 Cash funds last year end	12,812	-	-	12,812	12,812
Cash funds this year end	9,966.00	-	-	9,966	26,551

Section B Statement of assets and liabilities at the end of the period

Categories	Details	Unrestricted funds to nearest £	Restricted funds to nearest £	Endowment funds to nearest £
B1 Cash funds	Barclays Current Account	9,966	-	26,551
		-	-	-
		-	-	-
	Total cash funds	9,966	-	26,551
	(agree balances with receipts and payments account(s))	OK	OK	OK
B2 Other monetary assets	Details	Unrestricted funds to nearest £	Restricted funds to nearest £	Endowment funds to nearest £
		-	-	-
		-	-	-
B3 Investment assets	Details	Fund to which asset belongs	Cost (optional)	Current value (optional)
			-	-
B4 Assets retained for the charity's own use	Details	Fund to which asset belongs	Cost (optional)	Current value (optional)
	Pavilion building and plant	-	-	-
	Audio Visual Equipment	Unrestricted		-
	Managed Network & WiFi System	Unrestricted		-
	Internal CCTV System	Unrestricted		-
	Glass Display Fridge	Unrestricted		-
	Commercial Kitchen Equipment	Unrestricted		-
	Outdoor Benches	Unrestricted		
	Storage Container x2	Unrestricted		
	Tables and Chairs	Unrestricted		-
	Aluminium Moveable goalposts	Unrestricted		-
	Rideon Mower & Push Mower	Unrestricted		
	External CCTV Cameras	Unrestricted		
	Additional Kitchen Equipment	Unrestricted		
	Handryers and Cistern Controllers	Unrestricted		
	Industrial Shelving	Unrestricted		
Signage External & Internal	Unrestricted			
Outdoor Gym Equipment	Unrestricted		-	
B5 Liabilities	Details	Fund to which liability relates	Amount due (optional)	When due (optional)
			-	
			-	
			-	
			-	
Signed by one or two trustees on behalf of all the trustees	Signature	Print Name	Date of approval	
		Trevor Blackmore	20/01/2023	
		Ciaran McAuley	20/01/2023	

CARDEA COMMUNITY SPORTS ASSOCIATION

England & Wales - Charity number 1167553

Accounts



Trustees' Annual Report for the period

From	Period start date			To	Period end date		
	01	04	2020		31	03	2021

Section A Reference and administration details

Charity name Cardea Community Sports Association

Other names charity is known by CCSA

Registered charity number (if any) 1167553

Charity's principal address

Bellona Drive,
Cardea, South Stanground
Peterborough
Postcode PE2 8GP

Names of the charity trustees who manage the charity

	Trustee name	Office (if any)	Dates acted if not for whole year	Name of person (or body) entitled to appoint trustee (if any)
1	Ciaran McAuley			
2	Jason Holt			
3	Trevor Blackmore			
4	Jade Blackmore			
5	Peter Mathers			
6				
7				
8				
9				
10				
11				
12				
13				
14				
15				
16				
17				
18				
19				
20				

Names of the trustees for the charity, if any, (for example, any custodian trustees)

Name	Dates acted if not for whole year

Names and addresses of advisers (Optional information)

Type of adviser	Name	Address

Name of chief executive or names of senior staff members (Optional information)

--

Section B Structure, governance and management

Description of the charity's trusts

Type of governing document (eg. trust deed, constitution)	Constitution
How the charity is constituted (eg. trust, association, company)	Charitable Incorporated Organisation (CIO)
Trustee selection methods (eg. appointed by, elected by)	Elected By

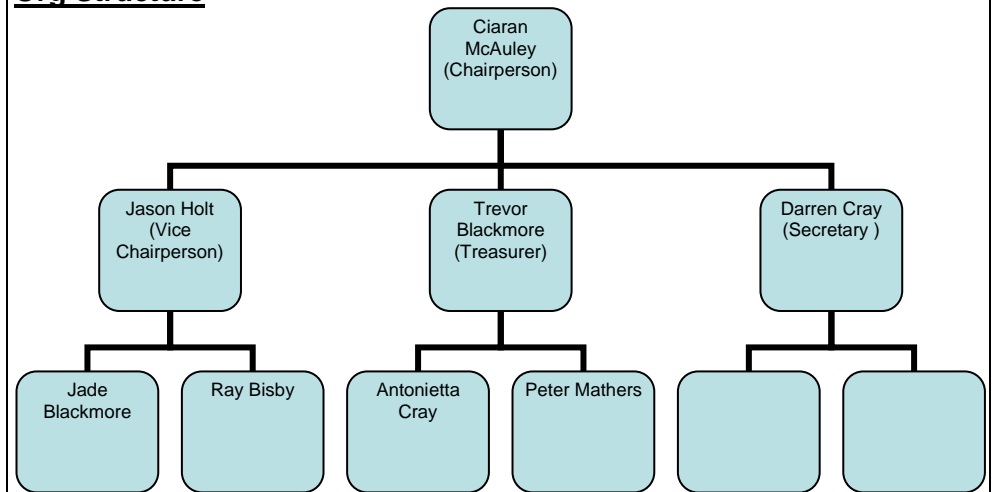
Additional governance issues (Optional information)

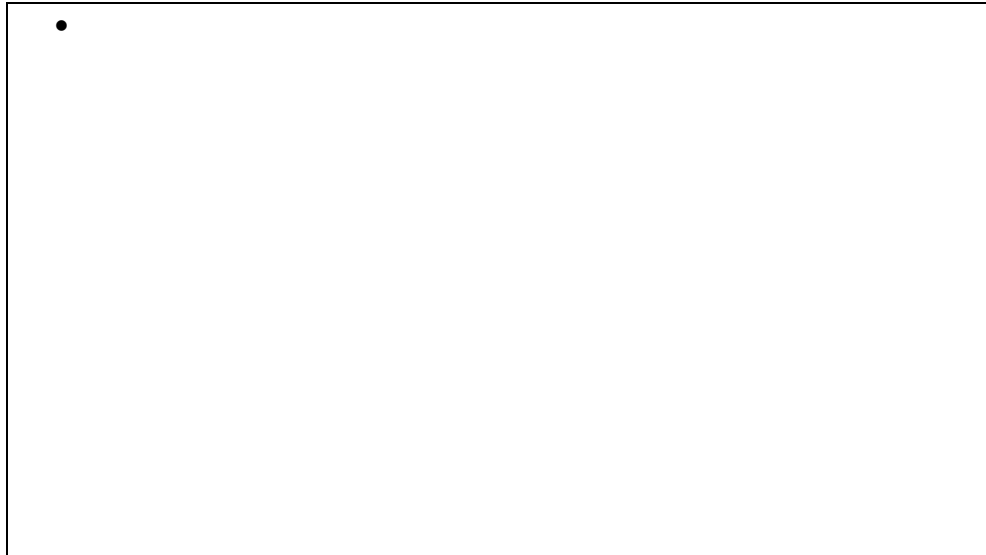
You **may choose** to include additional information, where relevant, about:

- policies and procedures adopted for the induction and training of trustees;
- the charity's organisational structure and any wider network with which the charity works;
- relationship with any related parties;
- trustees' consideration of major risks and the system and procedures to manage them.

- Monthly committee meeting of trustees & members including
 - Financial overview & performance
 - Adherence to aims & objectives
 - Risk & Issue overview
 - Customer overview & feedback
 - Strategy alignment
 - Future planning & road mapping

Org Structure





Section C Objectives and activities

Summary of the objects of the charity set out in its governing document

The CCSA will promote and provide facilities for various sports and groups for Cardea, Stanground and the wider Peterborough area.

- To offer coaching and sporting opportunities
- To promote the CCSA within the local community
- To manage the CCSA, facilities and finances
- To ensure a duty of care for all members of the CCSA
- To provide all services in a way that is fair to all residents regardless of age, sex or background
- To ensure that all present and future members receive full and equal treatment

We continue to remain accessible to everyone and have a very healthy diverse number of different groups using our facilities. We continue to promote our aims and objective throughout our catchment area and beyond. Football clubs have used our facilities where possible. Finances have been managed in line with expectations and reinvested in our facilities by purchasing additional assets and equipment to further enhance peoples experience when they visit us.

Summary of the main activities undertaken for the public benefit in relation to these objects (include within this section the statutory declaration that trustees have had regard to the guidance issued by the Charity Commission on public benefit)

Additional details of objectives and activities (Optional information)

You **may choose** to include further statements, where relevant, about:

- policy on grantmaking;
- policy programme related investment;
- contribution made by volunteers.

Summary of the main achievements of the charity during the year

From April 2020, the country continued to be effected by COVID-19 and this had a significant impact on us.

Our indoor facilities remained closed until October where we slowly phased group bookings based on government restrictions and guidance. A further lockdown in late 2020 impacted us again. The majority of our groups were unable to return as it was not possible to run their sessions for various reasons. As of the end of March 2021 this was still the case.

Our outdoor facilities returned in September 2020 however there were several restrictions that remained in place and as such the number of football games we reduced. All grassroots football was further suspended in November 2020 and did not resume until April 2021.

During lockdown we were undertook various maintenance tasks around the Pavilion as the building is now 5 years old. We painted the entire interior walls and woodwork. We installed a new container for us to store our outdoor maintenance equipment.

The Football Foundation released grant funding to enable us to do repairs on our main playing pitch. We began topsoiling and redressing in March 2020 and repairs are ongoing with a completion date of August 2021.

We also received a donation from Peterborough Crime and Commissioners Office to help with our project 'Access to Exercise'. This project began in March 2021 with a completion date of May 2021. We are installing an outdoor gym allowing our community free access to exercise. We hope that it will get used regularly by all.

Section E

Financial review

Brief statement of the charity's policy on reserves

Once our charities activities have stabilised and we have stopped investing in assets, a reserve account will be created to support our future development plans of the site.

Details of any funds materially in deficit

Further financial review details (Optional information)

You **may choose** to include additional information, where relevant about:

- the charity's principal sources of funds (including any fundraising);
- how expenditure has supported the key objectives of the charity;
- investment policy and objectives including any ethical investment policy adopted.

Our principal source of income was significantly impacted by closures due to COVID-19. Room hire dropped by over 80% We received support from the Government by way of grants.

This allowed us to continue to invest in the facilities by purchasing further assets and equipment. We were also able to invest in the playing surface of our main pitch.

Section F

Other optional information

Section G

Declaration

The trustees declare that they have approved the trustees' report above.

Signed on behalf of the charity's trustees

Signature(s)		
Full name(s)	Ciaran McAuley	Trevor Blackmore
Position (eg Secretary, Chair, etc)	Chair	Treasurer
Date	17/01/2022	



Section A

Independent Examiner's Report

**Report to the trustees/
members of**

Charity Name
Cardea Community Sports Association

**On accounts for the year
ended**

March 2021

**Charity no
(if any)**

1167553

Set out on pages

(remember to include the page numbers of additional sheets)

I report to the trustees on my examination of the accounts of the above charity ("the Trust") for the year ended 31/03/2021

**Responsibilities and
basis of report**

As the charity's trustees, you are responsible for the preparation of the accounts in accordance with the requirements of the Charities Act 2011 ("the Act").

I report in respect of my examination of the Trust's accounts carried out under section 145 of the 2011 Act and in carrying out my examination, I have followed all the applicable Directions given by the Charity Commission under section 145(5)(b) of the Act.

**Independent
examiner's statement**

I have completed my examination. I confirm that no material matters have come to my attention in connection with the examination which gives me cause to believe that in, any material respect:

- the accounting records were not kept in accordance with section 130 of the Charities Act; or
- the accounts did not accord with the accounting records; or
- the accounts did not comply with the applicable requirements concerning the form and content of accounts set out in the Charities (Accounts and Reports) Regulations 2008 other than any requirement that the accounts give a 'true and fair' view which is not a matter considered as part of an independent examination.

I have no concerns and have come across no other matters in connection with the examination to which attention should be drawn in this report in order to enable a proper understanding of the accounts to be reached.

Signed: *APower*

Date: 17/01/2021

Name: Angela Power

**Relevant professional
qualification(s) or body
(if any):**

AAT Level 4 Qualification

Address:

63 Woodhall Rise

Peterborough

PE4 5BX

Only complete if the examiner needs to highlight material matters of concern (see CC32, Independent examination of charity accounts: directions and guidance for examiners).

Give here brief details of any items that the examiner wishes to disclose.



CHARITY COMMISSION
FOR ENGLAND AND WALES

Charity Name Cardea Community Sports Association	No (if any) 1167553
--	-------------------------------

CC16a

Receipts and payments accounts

For the period from	Period start date Apr-20	To	Period end date Mar-21
---------------------	-----------------------------	----	---------------------------

Section A Receipts and payments

	Unrestricted funds to the nearest £	Restricted funds to the nearest £	Endowment funds to the nearest £	Total funds to the nearest £	Last year to the nearest £
A1 Receipts					
Fundraising	-	-	-	-	-
Donations	3,000	-	-	3,000	-
Pitch Hire	1,810	-	-	1,810	2,550
Room Hire	2,385	-	-	2,385	12,254
Café Sales	559	-	-	559	4,886
Grants	27,891	-	-	27,891	-
	-	-	-	-	-
	-	-	-	-	-
Sub total (Gross income for AR)	35,645	-	-	35,645	19,690
A2 Asset and investment sales, (see table).					
	-	-	-	-	-
	-	-	-	-	-
Sub total	-	-	-	-	-
Total receipts	35,645	-	-	35,645	19,690
A3 Payments					
Cleaning	577	-	-	577	1,546
Professional Fees	-	-	-	-	-
Café Food & Beverage	442	-	-	442	3,916
Fundraising Costs	-	-	-	-	533
Insurance	392	-	-	392	468
Maintenance & Supplies	3,029	-	-	3,029	4,002
Utilities	2,049	-	-	2,049	2,698
IT Support	359	-	-	359	720
Pitch Maintenance	4,042	-	-	4,042	-
	-	-	-	-	-
Sub total	10,890	-	-	10,890	13,882
A4 Asset and investment purchases, (see table)					
Equipment	11,016	-	-	11,016	5,035
Landscaping	-	-	-	-	-
Sub total	11,016	-	-	11,016	5,035
Total payments	21,906	-	-	21,906	18,917
Net of receipts/(payments)	13,739	-	-	13,739	773
A5 Transfers between funds	-	-	-	-	-
A6 Cash funds last year end	12,812	-	-	12,812	12,812
Cash funds this year end	26,550.89	-	-	26,551	13,585

Section B Statement of assets and liabilities at the end of the period

Categories	Details	Unrestricted funds to nearest £	Restricted funds to nearest £	Endowment funds to nearest £
B1 Cash funds	Barclays Current Account	26,551	-	13,585
		-	-	-
		-	-	-
	Total cash funds	26,551	-	13,585
	(agree balances with receipts and payments account(s))	OK	OK	OK
B2 Other monetary assets	Details	-	-	-
		-	-	-
		-	-	-
B3 Investment assets	Details	-	-	-
		-	-	-
B4 Assets retained for the charity's own use	Details	-	-	-
	Pavilion building and plant	-	-	-
	Audio Visual Equipment	Unrestricted		-
	Managed Network & WiFi System	Unrestricted		-
	Internal CCTV System	Unrestricted		-
	Glass Display Fridge	Unrestricted		-
	Commercial Kitchen Equipment	Unrestricted		-
	Outdoor Benches	Unrestricted		
	Storage Container x2	Unrestricted		
	Tables and Chairs	Unrestricted		-
	Aluminium Moveable goalposts	Unrestricted		-
	Rideon Mower & Push Mower	Unrestricted		
	External CCTV Cameras	Unrestricted		
	Additional Kitchen Equipment	Unrestricted		
	Handryers and Cistern Controllers	Unrestricted		
	Industrial Shelving	Unrestricted		
Signage External & Internal	Unrestricted			
Outdoor Gym Equipment	Unrestricted		-	
B5 Liabilities	Details	-	-	-
		-	-	-
		-	-	-
		-	-	-
		-	-	-
Signed by one or two trustees on behalf of all the trustees	Signature	Print Name	Date of approval	
		Trevor Blackmore	17/01/2022	
		Jason Holt	17/01/2022	