

## Discover DeCrypt, Gloucester Annual Report for 2024



Discover DeCrypt is a charity based in the Church of St Mary de Crypt and the adjacent Tudor schoolroom in Southgate Street in the centre of Gloucester. Our £2.1 million restoration project, completed in 2019, was made possible through a grant from the National Lottery Heritage Fund and donations from other trusts, organisations and individuals. We aim to share our faith in Jesus Christ, to promote the story of our history and heritage and to enhance the life of our city.

Following our vision of sharing our 'faith', 'story' and 'life', Discover DeCrypt has continued throughout 2024 to welcome people from far and wide in the spirit of Christian hospitality. In addition to groups which use our buildings on a regular basis, we have received 24,500 visitors this year.



2024 has been a year in which Discover DeCrypt has developed into an increasingly active community hub, making a valued contribution to the life of the city. Our Christian ethos remains very much at the forefront, but a wide range of different groups make use of our facilities.

We were also fortunate this year to be awarded a grant of £117,000 from the National Lottery Heritage Fund to begin the development phase of a major new conservation project. This initial grant has been used to employ a professional fundraiser and to commission specialist reports on the stained glass, stonework and polychromy of our chancel and sanctuary. If we are successful in attracting further funding to implement the project fully in 2025 and 2026, this will achieve a complete conservation of what is currently a very vulnerable part of the church, including the stabilisation and interpretation of our late medieval wall painting of the Adoration of the Magi.

This report highlights some of the major events we have held in 2024 and the groups we have supported in order to fulfil the three-fold objectives that lie at the heart of Discover DeCrypt's vision.

## **Objective 1 – FAITH:**

### **To share an inclusive sacred space**

- As a consecrated Christian church, we continue to offer space within our busy city for people to pray, reflect or simply take in the tranquillity of our building.
- Our regular events include Friday morning Coffee, Cake and Conversation, at which anyone facing challenges or problems in life may seek a sympathetic ear, our weekly lunchtime service of 'Prayers for the City' and Zoom services of Morning Prayer and Compline. Parish Eucharists are held at St Mary de Crypt whenever there is a fifth Sunday in the month.
- The annual Gloucester Day service, which takes place in September, is held in the church followed by a parade through the four main gated streets led by the Town Crier. It has become a wonderful celebration of life in our diverse city and the ability of the church to provide bridges within the community.
- A special Choral Evensong service was held at the end of the Gloucester Glow Festival in June, organised by Creative Field and led by the singing ensemble, Gaudeamus.



*Canon Nikki at the Gloucester Day celebrations*



*Unfurling our Pride banner outside the church*

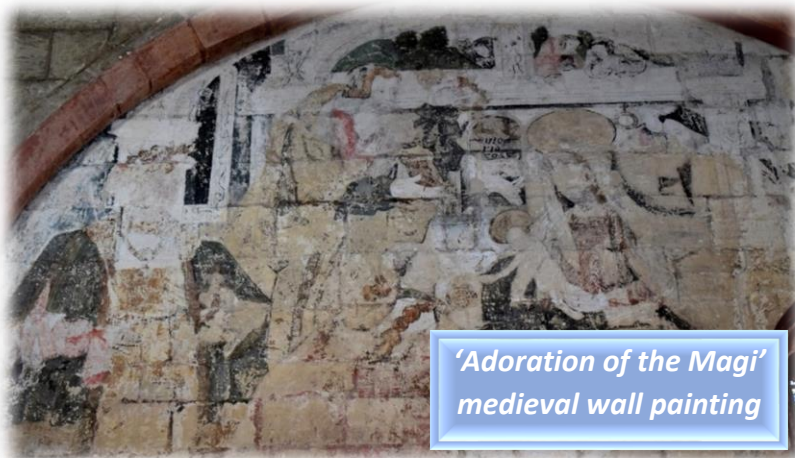
- Services were held during the festivals we hosted for the Steampunks community in June and December. The Rector commented that on these Sundays she may possibly have been the only member of the clergy in the country whose service was accompanied by a saw and six kazooes. Feedback was very favourable, highlighting our willingness to embrace different approaches and to include those who may not normally consider visiting a church. The summer festival saw the Archbishop of Canterbury making a call during his prayer walk in the city!
- Our aim is to be as inclusive as possible and to share God's love broadly. We continue to engage with the LGBTQI+ community, hosting the Pride of Gloucestershire AGM and a service to mark the Transgender Day of Remembrance.



## Objective 2 – STORY:

### To preserve and enhance our heritage, making heritage and history accessible

- Our team of volunteer guides has been on hand throughout the year to escort visitors around all areas of the church and schoolroom, focusing on the architecture and historical characters who have given interest to this place. The church was particularly showcased with tours during the Gloucester Heritage Open Days in September.



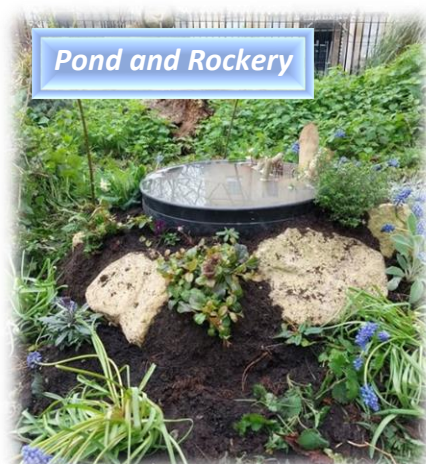
*'Adoration of the Magi'  
medieval wall painting*

- An exhibition has been mounted in the chancel to raise awareness of its architecture, considered by many to be the finest jewel within the church, and to explain the major conservation project which is proposed of the stained glass, stonework and medieval paintings. This project will complement the restoration of the rest of the building undertaken in 2019.

- The church's exhibition on the life and work of George Whitefield has been extensively reworked to set his links with slavery into the context of his time. In partnership with the University of Gloucestershire and the City Council, we have been working on ways to address this difficult history in consultation with representatives of Gloucester's diverse communities.
- Our Friends organisation has sponsored two informative evenings this year, one to mark the 350<sup>th</sup> anniversary of the death of Colonel Edward Massie, who commanded the city's forces during the Siege of Gloucester, and another to commemorate the life of the poet William Henley, who was educated at the Crypt School and is considered the inspiration for Long John Silver in 'Treasure Island'.
- Grove Productions attracted large audiences for their performances of 'A Christmas Carol', which took place over successive nights in December, celebrating the link St Mary de Crypt has with Jemmy Wood, the Gloucester miser who may have been in Charles Dickens' mind when he created the character of Scrooge. "I thought the show was great fun", wrote one reviewer, "and having it at the church was inspired".
- The churchyard has continued to develop as an intriguing and nature-filled space. A new raised pond and rockery were created during the summer with help from Gloucestershire Wildlife Trust.



*'Christmas Carol' Production*



*Pond and Rockery*



### Objective 3 – LIFE:

**To provide an inspiring community space that is affordable, accessible and welcoming**

- The Tudor Tea Room, located in the old schoolroom, has been developed this year and now acts as a vibrant social centre, offering high quality hospitality, attracting its own customers and supporting the events we have with a wide range of refreshments on offer.
- The groups which lease our premises on a regular basis reflect a range of different community interests. Among these are a tai chi health and fitness class, a 'stay and play' toddler group, a meditation class specialising in mindfulness, the Heart of Gloucester community choir and the Cuddesdon, Gloucester and Hereford training course for ordinands.
- We have continued to host a regular programme of concerts and drama performances which have been well-received by the community. The Saturday morning Creative Field Coffee Concerts have continued to be popular and have provided a wide range of inspiring music of different genres. Special concerts have included the Carducci Quartet's Mozart Concert, featuring clarinettist Emma Johnson.
- Our historic church lends itself naturally to both music and drama. Two of the most successful drama productions played out to packed audiences over several nights were the Rococo Players' 'A Book of Will' and Lou Beckett's 'A Rose by Any Other Name', both on Shakespearean themes.
- Among more commercially orientated events, two that stick in the mind are the Pre-Loved Kilo sale that brought more than 700 people into the church early in the year and the Vinyl Daze Record Fair, the first vinyl record fair to be held in Gloucester for over twenty years.



- The most lavish community events have been our two Steampunks Weekends. The summer weekend was a Pirate Festival coinciding with the Tall Ships Festival at the Docks and brought in more than 2,500 visitors. The Yuletide Revels in December brought a further 1,700 people into the church, admiring many of the outlandish frivolities on display. One of those visitors commented: "It's really impressive that this church is still a consecrated church and holds services, but it is also open to events like this – a fine example to other churches, I think".



## Thank You

We would like to thank all those who have enabled Discover DeCrypt to flourish and move forward this year. A particular debt of thanks is owed to the National Lottery Heritage Fund for its support of the preparatory stages of the sanctuary conservation project. We are also grateful to: our devoted volunteers, who welcome visitors week after week; our faith community, on whose continued prayer we rely; our regular hirers, who are always so appreciative of our facilities; and all our visitors and supporters, whose continued engagement and interest has made all we seek to do worthwhile.

### WATAN Event by Dominic Rai, artist in residence

Photo by John Whitfield



Crypt School  
Choir Rehearsal

## Charity Details

Registered Charity Number: 1167097

Address: St Mary de Crypt Church and School, Southgate Street,  
Gloucester, GL1 1TP

The board of trustees has continued unchanged in 2024: Rev Canon Nicola Arthy (Ex-Officio Chair); Mr Peter Gould (Treasurer); Mr David Evans (Secretary); Rev Dr Canon Sandra Millar; Ms Ursula Corcoran; and Mr Richard Ryan.

Trustees are either nominated by the PCC or appointed by the Chair following consultation with existing trustees. The full Board of Trustees has at least four meetings a year, whilst a smaller group referred to as the Operations Board meets more frequently.

The charity employs an Operations Manager and a Community Manager and others in duty manager, café manager and cleaning roles. We also rely extensively on our volunteers.

*David Evans on behalf of Discover DeCrypt*



**SECTION A Receipts and payments**

	Unrestricted	Restricted	Endowment	Total funds
<b>A1 Receipts</b>				
Services	0			0
The Foyle Foundation	5000			5000
NHLF Resilience	6250			6250
Sanctuary project	22466			22466
DCMS	0			0
Gift Aid	938			938
Friends	397			397
SMdC	15500			15500
School	4000			4000
Personal	1765			1765
Other	5610			5610
SMdC Fabric	0			0
Donations Public	3288			3288
Tearoom	18644			18644
Shop	6978			6978
Lettings	20821			20821
Events	7169			7169
Ins claims	0			0
Sanctuary Donations	1056			1056
Tours	0			0
<b>Sub total (Gross income for AR)</b>	<b>119882</b>	<b>0</b>	<b>0</b>	<b>119882</b>
<b>A2 Investment sales</b>				
	0	0	0	0
	0	0	0	0
<b>Sub total</b>	<b>0</b>	<b>0</b>	<b>0</b>	<b>0</b>
<b>Total Receipts</b>	<b>119882</b>	<b>0</b>	<b>0</b>	<b>119882</b>

<b>A3 Payments</b>				
Resilience	2185			2185
Sanctuary Project	19487			19487
Sanctuary Project offset	0			0
Maintenance; Sces	11290			11290
Maintenance: Fabric	3111			3111
Maintenance: Quin	0			0
Gas	3248			3248
E/L	5326			5326
Insurance	7223			7223
Water	1563			1563
Website	60			60
Tel/BB	1566			1566
Fees	360			360
Stat/Print	0			0
Event costs	5981			5981
Goods	3512			3512
Management/Cleaning	40120			40120
Tearoom	11189			11189
Duty Mgr	6078			6078
Other	3708			3708
Equipment	1004			1004
Tearoom supplies	3915			3915
Marketing/Publicity	115			115
<b>Sub total</b>	<b>131043</b>	<b>0</b>	<b>0</b>	<b>131043</b>
				<b>0</b>



**A4 Asset & Investment purchases**

	0	0	0	0	0
	0	0	0	0	0
<b>Sub total</b>	0	0	0	0	0

<b>Total payments</b>	131043	0	0	131043	0
-----------------------	--------	---	---	--------	---

<b>Net of receipts/(payments)</b>	-11160	0	0	-11160	
<b>A5 Transfer between funds</b>		0	0	0	
<b>A6 Cash funds last year end</b>	20715	0	0	20715	
<b>Cash funds this year end</b>	9555	0	0	9555	

**Bank accounts Y/C balances:**

<i>Cooperative</i>	4961	0	0	4961	
<i>NatWest</i>	15100	0	0	15100	
<i>Lloyds</i>	1414	0	0	1414	
<b>Total</b>	21474	0	0	21474	

**Bank accounts Y/E balances:**

<i>Cooperative</i>	619	0	0	619	
<i>NatwWest</i>	8281	0	0	8281	
<i>Lloyds</i>	654	0	0	654	
<b>Total</b>	9555	0	0	9555	



**SECTION B Statement of assets and liabilities at Y/E**

Details		Unrestricted	Restricted	Endowment
<b>B1 Cash funds</b>		9555	0	0
<b>B2 Other monetary assets</b>		0	0	0
<b>B3 Investment assets</b>		0	0	0
<b>Assets retained for the charity's own use</b>		0	0	0
<b>Liabilities</b>				
Loan repayments	Diocesan loan	30000	0	0





# CHARITY COMMISSION FOR ENGLAND AND WALES

## Independent examiner's report on the accounts

### Section A

### Independent Examiner's Report

Report to the trustees/  
members of

Charity Name  
Discover DeCrypt

On accounts for the year  
ended

31 December 2024

Charity no  
(if any)

1167097

Set out on pages

1 - 4

(remember to include the page numbers of additional sheets)

I report to the trustees on my examination of the accounts of the above charity ("the Trust") for the year ended DD / MM / YYYY.

Responsibilities and  
basis of report

As the charity trustees of the Trust, you are responsible for the preparation of the accounts in accordance with the requirements of the Charities Act 2011 ("the Act").

I report in respect of my examination of the Trust's accounts carried out under section 145 of the 2011 Act and in carrying out my examination, I have followed the applicable Directions given by the Charity Commission under section 145(5)(b) of the Act.

Independent  
examiner's statement

I have completed my examination. I confirm that no material matters have come to my attention (other than that disclosed below \*) in connection with the examination which gives me cause to believe that in, any material respect:

- accounting records were not kept in accordance with section 130 of the Act or
- the accounts do not accord with the accounting records

I have no concerns and have come across no other matters in connection with the examination to which attention should be drawn in order to enable a proper understanding of the accounts to be reached.

\* Please delete the words in the brackets if they do not apply.

Signed:

Date:

23/07/2025

Name:

BALBINDER SINGH BHANDAL

Relevant professional  
qualification(s) or body  
(if any):

FCCA

Address:

25 HORSESHOE WAY, KEMPSTON,  
GLOUCESTER GL2 5GD.

### Section B

### Disclosure

Only complete if the examiner needs to highlight matters of concern (see CC32, Independent examination of charity accounts: directions and guidance for examiners).