



Partnerships Overseas Networking Trust

2024 / 2025

PONT Trustees Annual Report

Charity number: 1166910



partnerships tackling poverty together

The trustees present their report of the charity for the period 1st April 2024 to 31st March 2025.

The Financial Statements for the same period are also attached. Partnerships Overseas Networking Trust is a Charitable Incorporated Organisation registered with the Charity Commission under registration number 1166910. It more commonly uses its working name of PONT.

The trustees have adopted the provisions of the Statement of Recommended Practice (SORP) 'Accounting and Reporting by Charities' issued in March 2005.

SECTION A: ADMINISTRATIVE DETAILS

Trustees

Dr Geoff Lloyd
Howard Smith CEng MIET
Julian Martyn Newton
Cllr Jayne Brencher
Marga Quince
Richard Griffiths
John Maurice Comissiong (Chair of Trustees)
Dr Gaynor Louise Penrose

Non Trustees

Rebecca Westwood, Treasurer

Principal Office

Cartref
Pencerrig Street
Graigwen
Pontypridd
CF37 2HS

Bank

Lloyds Bank, Market Square, Pontypridd

Independent Financial Examiner

Luke Silver Accountancy & Taxation Services
25 Ellicombe Close
Minehead
Somerset
TA24 6DQ

SECTION B: STRUCTURE, GOVERNANCE AND MANAGEMENT

Partnerships Overseas Networking Trust is a registered charity, number 1166910, and is constituted under a trust deed dated 2nd July 2008.

New trustees are appointed by existing trustees; there is no fixed term of service for a trustee. The trust deed requires that there shall be at least 3 trustees.

The trustees meet at least twice a year and agree policies and regulations to be used by the trust and its committees. They also perform strategic planning. All trustees give their time freely and no trustee remuneration was paid in the year. Geoff Lloyd serves as chair of the trustees.

The trustees have appointed a Management Team and several committees to oversee the projects, grants and activities of the trust. Each committee is required to fully report its activities and proceedings to the trustees within 2 months. It shall conform to any regulations and policies that have been put in place by the trustees.

The following committees have been adopted.

Name	Area of Operation	Chair
Health	Improvement of Health	Dr Gaynor Penrose
Education	Linking Schools, supporting teachers and teaching through sharing of expertise, awareness raising	Jayne Brencher (acting)
Livelihoods	Relief and Prevention of Poverty amongst children and vulnerable families	Judith Richards (acting)
Engineering	Engineering Projects to assist communities	Howard Smith
Churches	Overseeing links between Rhondda Cynon Taf (RCT) and Mbale churches and delivering holistic mission.	Andrea Keay
Environment	Promotion of sustainable living and prevention of environmental degradation.	Marga Quince
Wildlife Education Centre and Eco-Lodge	Educational resource for the local schools and income generation.	Dr Geoff Lloyd
University	Mobilising the resources of Tertiary Educational Institutions	Marga Quince
Communications	To enable effective communication with the public on the charity's activities	John Comissiong
Finance	Propose financial procedures and regulations to trustees. Oversee the charity's accounts.	Rebecca Westwood

The majority of these committees maintain a relationship with an equivalent committee in Mbale, Uganda. They have delegated responsibility for the allocation of one or more restricted or designated funds. They arrange for monitoring and evaluation of any projects that they fund.

The Management Team has been created to undertake agreed functions with the consent of the trustees. These include:

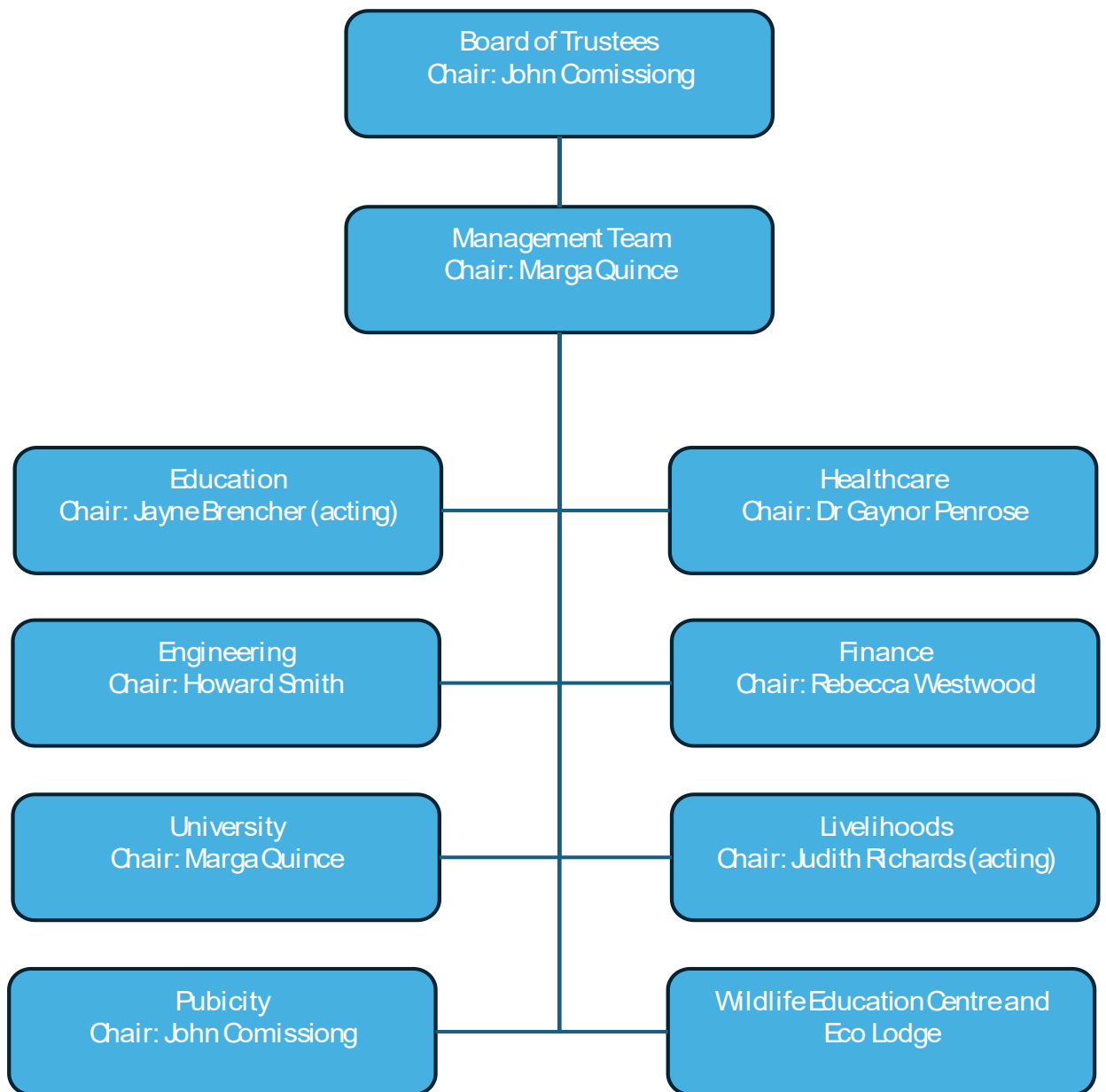
- Management of paid staff and contractors in UK
- Preparation of bids to UK and international donors with, or on behalf of PONT committees
- Development of policy documents
- Development of administrative functions
- Co-ordination with Mbale PONT regarding staffing, funding issues and the development of procedures.

The Management Team generally meets monthly and is chaired by Marga Quince. It invites others to attend from time to time for agreed purposes.

PONT works in partnership with a number of local organisations in Mbale, Uganda to pursue its objectives. To coordinate the work that we do with NGO partners, we asked them to create an umbrella organisation Mbale-PONT which is governed by a board which has representatives from each of the member NGOs. The majority of the running costs of Mbale PONT are met by a grant from PONT UK.

PONT has also encouraged the creation of a wider body in Mbale - the Mbale Coalition Against Poverty (Mbale-CAP). Mbale-CAP has charitable status in Uganda, receiving grants for Mbale-CAP running and project costs, including onward transmission of funds to support NGO partners in delivering and monitoring of projects. In addition to the NGO partners that make up Mbale-PONT this body includes representatives from the district governments of Mbale, Manafwa, Bududa, Namisindwa, Bulambuli, Sironko and Mbale City. Mbale-CAP has also been able to secure funding from other organisations.

PONT ORGANISATION STRUCTURE



SECTION C: OBJECTIVES AND ACTIVITIES

The relationship between the community of Rhondda Cynon Taf (RCT) in South Wales and the community of Mbale District in eastern Uganda was started in 2005 as an initiative of the charity Pontypridd Christian Concern (PCC). PCC created a subsidiary organisation “Pontypridd Overseas Networking Trust” to foster this partnership. From the outset the aim was to add our weight to the efforts of our partners to eradicate poverty in the region. Partnerships Overseas Networking Trust was created as a separate charity in 2008 to continue this work.

The objects of the Trust are defined in section 4 of the Trust Deed as follows:-

The objects of the trust are to relieve sickness and financial hardship and to promote and preserve good health (both physical, spiritual and social) by the provision of funds, goods, services of any kind, including through the provision of counselling and support in such parts of Uganda or the world as the trustees from time to time may think fit particularly but not so as to limit the generality of the foregoing by means of the exchange of people, resources and ideas between the community of the County of Rhondda Cynon Taf in South East Wales and the community of Mbale, Bududa, Manafwa, Namisindwa, Bulambuli and Sironko Districts of Eastern Uganda.

The Trustees have formulated the following Vision and Mission statements:

VISION:

To eliminate absolute poverty throughout the Mbale region of Uganda.

MISSION:

To encourage, empower and resource those helping people out of poverty in the Mbale region, Uganda through a network of personal and organisational relationships whilst learning from each other and enriching one another's lives.

The activities of PONT fall into 3 categories

1. Facilitating visits by individuals and committee representatives between our 2 communities.
2. Linking of institutions and professional groups.
3. Development and grant funding of projects which contribute to the charity's aims.

SUSTAINABLE DEVELOPMENT GOALS

The activities of PONT are guided by the UN Sustainable Development Goals (2015) insofar as we possess the skills, experience and expertise to support our Ugandan partners. The relevant SDGs are noted below

Committee	Area of Operation	Sustainable Development Goals
Health	Improvement of Health	1, 2, 3, 5, 6.
Education Wildlife Education Centre (Schools – University)	Linking Schools, supporting teachers and teaching through sharing of expertise; educational resource for local schools; heritage wildlife now absent from the local area.	1, 4, 5, 6, 8.
University	Mobilisation of resources of educational establishments for innovation and development.	2, 6.
Livelihoods	Relief and prevention of poverty amongst children and vulnerable families; income generation skills development.	1, 2, 4, 6.
Engineering & Appropriate Technology	Engineering projects to assist and develop communities and training opportunities for young people.	2, 3, 4, 5, 6, 7, 8, 11.
Environment	Promotion of sustainable living and prevention of environmental degradation.	2.

VISITS

VISITS TO MBALE AND UK

During the year 2024/25 there were various visits to Mbale. Following positive experience of using video conferencing meetings during Covid restrictions, some committees have continued these on a regular basis, with the associated benefits of closer contact between visits.

The following visits to Mbale took place (numbers of visitors in brackets):

February 2025 Engineering/environment (4), Medical/Mental Health(9), Education (2), Livelihoods (3)

LINKING

EDUCATION AND SCHOOLS

Over 100 Welsh schools have been linked with Partner Schools in Mbale including Schools catering for pupils with disabilities. During Covid, with many schools in both countries closed, many links became more tenuous and work is continuing to re-establish these and plan for future developments.

The main purpose of the partnerships is to create friendship links between schools and to:

- Extend pupils/staff's views of the world, embracing the concept of global citizenship.
- Enable pupils to learn about and respect one another's cultural differences by sharing of ideas and experiences.
- Enable intercultural dialogue, increased knowledge of one another's societies and enhance the schools' curricula.
- Enable professional development opportunities and resources

LIVELIHOODS

The PONT project set up to provide support for orphans and other vulnerable children (OVC), is currently being delivered through boosting the incomes (livelihoods) of poorer families. This is achieved by assisting with the formation of self-help/savings groups to provide loans for payment of school fees and materials as well as start-up funds for various income generating activities. Goat rearing is another significant part of the scheme. This is an income generating activity which can easily be managed by most families whilst also producing numerous side benefits such as milk and manure. To date over 1,000 goats have been distributed to poor families, many of whom look after orphaned children of their relatives in addition to their own children.

Training for the self-help groups and goat beneficiaries and associated dedicated goat supervisors is undertaken with the aim of producing long term sustainable change. 5 local NGOs are supported to run and monitor these activities in conjunction with the Mbale CAP Livelihoods Coordinator.

ENGINEERING

The Engineering team supports the work of a mechanical workshop in Mbale, with equipment originally supplied by Tata Steel. The workshop fabricates items such as beds and cots, peanut hullers and playground equipment, and machines shafts and other items to support machinery used by other local industries. It supports the other areas of PONT's work. It also provides vocational training in these skills. The aim is to raise the standard of fabrication and machining, technical specifications, financial forecasting, costing, management (including health and safety) and apprenticeships. The workshop supports the medical work through the construction, maintenance and repair of motorbike ambulances and other hospital equipment.

The team also installs solar electricity panels in PONT-linked primary schools in Mbale region, providing two light fittings and a socket in each classroom, the head teacher's room and storeroom, together with a laptop and technical support during the year if required and usually a face-to-face meeting during a PONT visit. This facilitates administration in schools where 600+ students on the roll is the norm, as well as internet access for communication and to give access to up-to-date teaching techniques and materials. This work also provides employment for local suppliers and electricians. In the future it is planned to provide projectors to enable use of the laptop in teaching and for video conferencing with the school's Welsh partner.

The engineering team supports and services the work of the other parts of PONT in Mbale and the UK as the opportunity arises.

CHURCHES

The PONT church committee connects local church congregations in the Pontypridd area with congregations which are part of an Mbale-PONT association of churches. This enables joint projects in welfare and mission as well as regular visits for church leaders and members in both directions.

WILDLIFE EDUCATION CENTRE AND ECOLODGE

The WEC (Wildlife Education Centre) has been constructed on a parcel of land overlooking Mbale. This contains a collection of local animals which is used to educate the PONT schools in the importance of preserving local wildlife through interactive sessions and hands on experiences. All schools in the region are invited to bring along classes to the centre free of charge.

An Ecolodge has also been opened on the site providing a restaurant, a bar and 8 double bed bandas.

Members of the public can pay to visit the WEC and/or use the Ecolodge.

HEALTH

PRIMARY CARE

PONT Primary Care Committee links with Mbale CAP Health Committee supporting Community Health Worker development and partner capacity building. GPs and other health staff contribute to training through exchange visits.

PONT-Mbale Primary Health Care aims to improve community health and uptake of preventive government health services by:

- training volunteers, forming a network of community health workers in Village Health Teams
- safeguarding sustainability by retention of volunteers' commitment and skills through ongoing update training

AMBULANCE

Ambulance staff volunteers from Wales Ambulance Service Trust (WAST) link with Mbale CAP Health committee and PONT PHC in delivering Emergency skills training and development of the Integrated Emergency Response Service

PONT Ambulance team aims to help save lives by:

- supporting volunteers training in lifesaving skills
- facilitating access to skilled health care through development of an integrated call-out transport service for maternity patients and people with emergency health needs

CWM TAF PONT HOSPITAL GROUP

The Royal Glamorgan Hospital in RCT is linked with the Mbale Regional Referral Hospital (RRH). The link has been in existence since 2007. The linking committee includes staff from Radiology, Endoscopy, Midwifery and A&E.

PONT-Mbale Hospital team aims to support improved care and practice throughout hospital departments and disciplines of Mbale Regional Referral Hospital (MRRH) through:

- training and exchange visits
- service development

PROJECTS

In addition to being the catalyst for the creation of projects which result from school, community and church links, PONT develops and funds its own projects using the expertise and money available to it. We invite our community in Wales to donate to restricted funds that are created for each project. In addition, PONT accesses grant funding for these projects. The trustees have delegated responsibility for selecting, developing, and monitoring these projects to the relevant subject committee.

The following Committee reports are based on visits to Uganda in February and March 2025, reflecting the most up-to-date information on developments with our partners.

EDUCATION AND SCHOOLS

This visit was particularly poignant for those of us who have been with PONT/Mbale CAP for 20 years and a time for reflection and celebration. Eleanor Hanyiga, our Education head, passed away in December 2024 and we were able to pay tribute to her extraordinary contribution.

Visits to a number of schools were made where solar panels had previously been installed by the PONT Engineering team. These schools all have a partner school in Wales and during one visit a video link was set up joining final year primary pupils in Musiye Primary School and Coedylan Primary School in Pontypridd – an emotional moment.



Bubutu Secondary School - the first partnership and a school that had many orphans due to HIV, and poor results - has been transformed into a school of almost 2000 students and achieved much improved exam results due in part, they suggest, to compulsory school lunches. The school is part of the curriculum review for Uganda.



The girls' hostel at Bubutu built by students from Pontypridd High/Ysgol Bro Taf has 200 girls completing 6th form safely. The PONT women spoke to a group of the older girls on their own pathways to a career and the fact that much can happen along the way but that no learning is ever lost.



LIVELIHOODS

The Livelihoods team works with six of our coalition partners in Mbale to improve the lives of people in often remote villages where small scale farming and poor access to markets leave many families in dire poverty. Presently there are 47 village groups, a number of which were visited by team members during this visit. Initially the (mainly) women meet every week as a Self-help Group, discussing the many challenges of their lives and setting up a savings group which allows them to save an amount, however small, against which they can then borrow to pay for household goods, school equipment or setting up a small business. A goat project helps the most vulnerable families, providing milk, fertiliser and the possibility of selling (goat) kids to raise money. Group members are very enthusiastic to learn new skills:

“The income-generating activities have empowered us”

“There is less violence in the home”

“The children are no longer hungry”

Team members heard and saw the evidence of success stories of women who had developed new income-generating skills including bakery, crafts and goat husbandry. Sessions were run in two villages on making Welsh cakes, which would be sold in the local trading centre or school, along with mandazi (doughnuts) and chapatti.



(A first encounter with Welsh cakes)

In a new development, keyhole gardens are being trialled both in Mbale and RCT, Wales. This is a circular raised garden with a central composting basket which will allow a family to grow vegetables all year round including in the dry season when grey household water can be used. This will particularly benefit the elderly and disabled who have difficulty bending, pregnant women and children who often suffer from malnutrition when all other agricultural produce has to be sold just to make ends

meet. The first keyhole garden was constructed during the visit and we are now experimenting using materials which are cheap/free and readily available in Uganda.



(The first keyhole garden ready to be filled with topsoil and planted with vegetables and fruit.)



This lady is 65 years old and is HIV+. She is so appreciative of the self-help group as she no longer feels alone. Through the savings group she can borrow money to pay for her medication. The goat droppings provide fertiliser for growing pineapples, her small business.



Through the goat project this man was able to save and buy a motor cycle which is the normal form of “taxi”, together with delivering goods. Part of his income is repaying the loan and he has been encouraged to replace his goat to keep the goat project going. The Self-help groups are an excellent way of disseminating information and new skills for development in areas where there is no radio or TV.

CHURCHES

There was no churches visit this year, but the existing projects are on going. It is anticipated that there will be a visit in 2026.

HEALTH - PRIMARY HEALTH CARE, MENTAL HEALTH, AMBULANCES & SECONDARY CARE

Primary Healthcare

Headlines from the visit are that PONT’s model of training village health workers, backed up by motorbike ambulances is making a real difference. We were greatly encouraged to hear from Dr Jonathan, District Health Officer for Mbale District, that the Mbale region now has the lowest child and maternal mortality rates in the whole of Uganda! On visits to Bududa and Wanale we witnessed first-hand the sterling work of a few of our 1200 volunteer village health workers. They educated families about “the ideal home,” including hygienic kitchens, bathrooms and pit latrines, the use of mosquito nets and hand-washing facilities. Immunisation records were scrutinised to ensure children were fully protected and pregnant mothers were educated on healthy diets, need for ante-natal care and preparation for labour.



Meetings with our partner NGOs and District Health Officers were extremely encouraging. There was a pride in what we, as a coalition, are achieving, and a real sense of working towards a common goal. Plans were made to expand the primary health care work (by training more health workers) and ambulance fleet (by manufacturing further Tuk-Tuk Ambulances) as we obtain further funding. The growth that we have seen in the Ambulance provision over the past 15 years looks set to continue well into the future.

Mental Health

Having taught on mental health during our previous two visits, we decided to have a different focus this time. We wanted to go with the aim to understand the local communities better, both their strengths and resources, and also any areas where they might need our support in the future. We were privileged to meet with several different groups of people: we saw many families in their own homes, groups of religious and community leaders, and groups of women. We also met with two groups of operational leaders who had attended our training last year, and heard from them about their successes.



Last year's operational leaders had applied principles of listening, confidentiality and follow up in many situations. They told stories of community members they had been able to help, and then shared and helped each other with some tricky cases. We were particularly delighted to find out that they are in frequent contact with each other and are using each other to help to problem solve when they come across difficulties.

Being welcomed into family homes was amazing. We felt so privileged to be there, and were amazed at the openness with which so many shared their stories, their struggles and their opinions. The communities are close, neighbours know one other very well and almost universally value education and health care. Many people mentioned savings groups both as a means of financial and social support. Faith is of central importance in most families, both in Christian and Muslim communities. Many see witch doctors but feel ashamed of this and hide the fact that they do so. We learned that male circumcision (of adolescents) remains important in all communities, and polygamy is a common practise regardless of which faith the family adheres to. We were surprised to find that these communities and some of their leaders including religious leader still considered epilepsy to be contagious disease. We feel that there is need to give further education in this area to dispel this myth.



We were particularly impacted by the loving support we found in two of the women's groups. A group of women living with HIV were fiercely supportive of one another, had their own savings group. They help each other in practical and emotional ways. As a result many women in the group were radiating confidence and confronting the stigma they all face wherever they find it. Similarly, in the women's prison the group of women were singing, dancing, supporting each other and creating their own loving community. In the women's prison we were able to return and teach some basic counselling skills to support them in helping each other. They even attempted to teach us to dance (and found our stiff Western dance moves cause for much hilarity!)

This year's visit has given us some ideas for the work we will be able to do in the future. We concluded that providing education on mental health for religious leaders and community leaders will have a widespread impact due to their powerful influence in the communities. We also feel that savings groups could be a very effective way to get simple messages to the communities. We would also be delighted to provide some basic counselling training to groups who want to support each other better, such as in the women's prison and the group of women living with HIV. We hope that one day there will be a similar group of men, and we will support the NGOs who want to work on that.

Ambulances

Our team included Paramedics from the Welsh Ambulance Service, South Central Ambulance Service and another Paramedic who works within the Private sector. We delivered a training course to 34 ambulance drivers, some of these were new drivers and some were existing drivers who were having refresher training. As always, the training was a great success, with all the trainees thoroughly enjoying gaining knowledge and skills they can use to benefit their own communities.

Our training included many different topics including: Haemorrhage control, Treatment of fractures, Care of the Unconscious patient, Burns, Choking, Dehydration and Treatment of Snake bites. Sister Jennifer, Mbale CAP's new health coordinator (an experienced midwife and district trainer) educated the riders about pregnancy, normal labour and delivery complications. We discovered that the majority of our riders had delivered at least one baby in their motorbike ambulance.



All the trainees passed with flying colours and were each awarded a certificate in recognition of their hard work during the course. We were also thrilled to present our first ever 'Best Ambulance Driver of The Year' award to Andrew Omunyini. This was in recognition of his commitment to his role and the professionalism he displays every day.

During the trip, we also worked with our PONT engineering colleagues to help develop the exciting new TukTuk ambulances. This marks a move away from motorbike ambulances to a more robust TukTuk vehicle which we anticipate will serve the communities for many years to come. PONT's new Tuk-Tuk ambulances have been well-received and are busy saving lives. Last month heralded the first newborn delivery in one of the Tuk-Tuks. The ambulance was nearing the health centre but the baby couldn't wait! The mother was able to deliver in the privacy of an enclosed ambulance and was quickly transferred to the care of midwives at the health centre, who were alerted by the Tuk-Tuk's siren. The parents were extremely grateful and rewarded our driver with bananas and a duck!



We also travelled to Bududa to visit our wonderful female ambulance driver Norah. In a male dominated country, it is so important that we encourage and promote the role 'Ambulance Driver' to more women and Norah is a shining example of what can be achieved. While spending time with Norah, we had a good look at her ambulance and found it to be in excellent condition and very well looked after, she is a credit to her community and serves them remarkably well.

PONT ENGINEERING

One of our main achievements was completing the 2nd and final stage of the installation of a solar power system at Musiye Primary School. They now have electric lights and a power socket in all of the classrooms, which will be of great benefit to them. We also took the opportunity to facilitate another on line video meeting with their partner school in Pontypridd – Coed-y-Lan Primary School. The children and teachers on both sides enjoyed the experience. We surveyed Sikulu Primary School in order to be able to put together a budget for fundraising to hopefully install the 1st stage of a solar power system there on next year's visit. Additionally, we visited one of the schools where we previously installed solar power.



Our second achievement was further work at the PONT Uganda Ltd mechanical workshop social enterprise, particularly on the new TTAs (tuk-tuk ambulances) that we jointly designed, and that they are building. We were able to work on improvements to the design, and the production process. Slightly less interesting (but just as important!) we were able to commence improvements in the business management and accounting systems to better handle the increased activity that the TTAs are leading to.



PONT is not just about projects and 'aid'. It is a partnership between our communities, and the building of long term trusted relationships with those we work with and through on both sides.

We had the sad experience on this visit of paying our respects to the wife and young children of Abudu al Rasul, who died since our visit last year. He had been our taxi driver in Mbale for years, taking the smaller groups like us out to all the projects, keeping us safe, giving us valuable advice, and even helping out in the projects themselves. He had become a much-loved friend.

WILDLIFE EDUCATION CENTRE AND ECOLODGE

The centre continues to grow both in size, and popularity. The existing animal residents are getting increasingly tame. The Ostriches love company, and come right up to you for a cwtch when you enter their compound! The Ugandan Kobs have given birth to a baby, which is growing rapidly and after 2 weeks can run to keep up with its mum! We have had two new crocodiles, which enjoy going for a walk down to the river each day (on a leash!). The number of schools coming to visit has dramatically increased, so on this visit we gave updates to all our keepers on how to give engaging talks about their animals.

Cwmbale lodge

We have just opened up another wing of the lodge as a conference centre/ functions room. This can hold 200 attendees seated in rows, or 120 seated around tables. This will greatly increase both our capacity and our versatility. We have now staked out the ground for 2 new VIP Bandas (that will hold 4 guests in each.) These are facing into the safari compound, so in the mornings you can open the curtains and see the animals in front of you. Then whilst you sit at the patio enjoying your breakfast, you will be given a bucket of feed to allow the animals to eat on the other side of the fence.



The trustees confirm that they have referred to the guidance contained in the Charity Commission's general guidance on public benefit when reviewing the Trust's aims and objectives and in planning future activities.

SECTION D: RESERVES POLICY

The PONT trustees have adopted the following reserves policy

General Fund

The annual budgets for the General Fund include the following expenditure

1. the core costs of the charity
2. the grants given to cover the core costs of Mbale PONT.

The General Fund will hold sufficient assets to cover between 6 and 9 months of these expenditures.

Designated Funds

The PONT Management Team may from time to time designate funds to be used by a committee to cover future project expenditure. Such funds must be spent within 12 months of their designation unless a longer period has been specifically authorised by the trustees.

SECTION E: DECLARATION

STATEMENT OF TRUSTEES RESPONSIBILITIES

The trustees are responsible for preparing the Report of the Trustees and the financial statements in accordance with applicable law and United Kingdom Generally Accepted Accounting Practice.

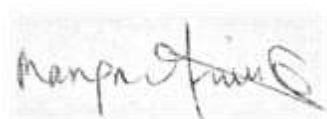
The law applicable to charities in England and Wales, the Charities Act 1993, Charity (Accounts and Reports) Regulations 2008 and the provisions of the trust deed requires the trustees to prepare financial statements for each financial year which give a true and fair view of the state of affairs of the charity and of the incoming resources and application of resources, including the income and expenditure, of the charity for that period. In preparing those financial statements, the trustees are required to

- select suitable accounting policies and then apply them consistently;
- observe the methods and principles in the Charity SORP;
- make judgements and estimates that are reasonable and prudent;
- prepare the financial statements on the going concern basis unless it is inappropriate to presume that the charity will continue in business

The trustees are responsible for keeping proper accounting records which disclose with reasonable accuracy at any time the financial position of the charity and to enable them to ensure that the financial statements comply with the Charities Act 1993, the Charity (Accounts and Reports) Regulations 2008 and the provisions of the trust deed. They are also responsible for safeguarding the assets of the charity and hence for taking reasonable steps for the prevention and detection of fraud and other irregularities.

The trustees declare that they have approved the trustees' report above.

Signed on behalf of the trustees on 28/1/2026 by:



Marga Quince

Trustee and main committee chair



Howard Smith

Trustee

INDEPENDENT EXAMINER'S REPORT ON THE ACCOUNTS

Accruals Accounts

Report to the trustees of Partnership Overseas Networking Trust

Registered Charity number 1166910

On the accounts for the year ended 31 March 2025

Set out on the following pages

Respective responsibilities of trustees and examiner

The charity's trustees are responsible for the preparation of the accounts. The charity's trustees consider that an audit is not required for this year (under section 144(2) of the Charities Act 2011 (the 2011 Act) and that an independent examination is needed.

It is my responsibility to:

- Examine the accounts (under section 145 of the 2022 Act;
- To follow the procedures laid down in the General Directions given by the Charity Commission (under section 145(5)(b) of the 2011 Act; and
- State whether particular matters have come to my attention.

Basis of independent examiner's report

My examination was carried out in accordance with the General Directions given by the Charity Commissioners. An examination includes a review of the accounting records kept by the charity and a comparison of the accounts presented with those records. It also includes consideration of any unusual items or disclosures in the accounts, and seeking explanations from you as trustees concerning any such matters. The procedures undertaken do not provide all the evidence that would be required in an audit, and consequently no opinion is given as to whether the accounts a 'true and fair view' and the report is limited to those matters set out in the statement below.

Independent examiner's statement

In connection with my examination, no matter has come to my attention:

- (1) which gives me reasonable cause to believe that in any material respect the requirements
 - to keep accounting records in accordance with section 130 of the 2011 Act; and
 - to prepare accounts which accord with the accounting records and comply with the accounting requirements of the 2011 Act

have not been met; or

- (2) to which, in my opinion, attention should be drawn in order to enable a proper understanding of the accounts to be reached.

Signed **L A Silver**

Date: 16 January 2026

Luke Silver HNC Business & Finance
Accountancy Practitioner

25 Ellicombe Close, Minehead, Somerset. TA24 6DQ

Statment of Financial Activities
For the Period 1 April 2025 to 31 March 2025

		Unrestricted funds	Restricted funds	Year Ended 31.03.25 Total funds	Year Ended 31.03.24 Total funds
	Notes	£	£	£	
Incoming Resources					
Voluntary income	2	51,456	266,792	318,248	292,824
Investment income		-		-	765
Activities for generating funds	3	55	2,863	2,918	1,558
Total incoming resources		51,511	269,655	321,166	295,147
Resources Expended					
Cost of generating funds					
Fundraising costs	4	-	143	143	-
Charitable activities					
Charitable activities	5	27,247	238,547	265,794	268,594
Governance costs	7	400	-	400	400
		27,647	238,690	266,337	268,994
Net Incoming Resources		23,864	30,965	54,829	26,153
		-	27,467	-	-
		-	3,603	54,829	26,153
RECONCILIATION OF FUNDS					
Total funds brought forward		41,151	71,916	113,067	86,914
Total funds carried forward		37,548	130,348	167,896	113,067

Balance Sheet
As at 31 March 2025

		Unrestricted funds £	Restricted funds £	Year Ended 31.03.24 Total funds £
Fixed Assets	Notes			
	11	-	-	-
		-	-	-
Current Assets				
Debtors	12	21,941	77,260	99,201
Cash at bank		18,707	50,570	69,277
		40,648	127,830	168,478
Current Liabilities				
Creditors: amounts falling due within one year	13	(3,100)	2,518	(582)
Net Current Assets		37,548	130,348	167,896
Net Assets		37,548	130,348	167,896
Funds	15			
General fund				36,363
Designated funds				1,185
Unrestricted funds				37,548
Restricted funds				130,348
				167,896

1. Accounting Policies

Basis of preparing the financial statements

No material uncertainties that may cast significant doubt the ability of the charity to continue as a going concern have been identified by the trustees.

Therefore the financial statements have been prepared on a going concern basis.

Accounting convention

The financial statements have been prepared under the historic cost convention, and in accordance with the Financial Reporting Standard for Smaller Entities (effective April 2008), the Charities Act 1993 and the requirements of the Statement of Recommended Practice, Accounting and Reporting by Charities.

Exemption from preparing a cash flow statement

Exemption has been taken from preparing a cash flow statement on the grounds that the charity qualifies as a small charity.

Incoming resources

All incoming resources are included on the Statement of Financial Activities when the charity is legally entitled to the income and the amount can be quantified with reasonable accuracy.

Resources expended

Expenditure is accounted for on an accruals basis and has been classified under headings that aggregate all cost related to the category. Where costs cannot be directly attributed to particular headings they have been allocated to activities on a basis consistent with the use of resources.

Cost of generating funds

Costs of generating funds comprise those costs directly attributable to raising funds through activities.

Other Fixed assets

The trustees has determined to depreciate the cost of equipment at 25% of cost per annum.

Governance costs

Governance costs include direct and related support costs relating to the governance infrastructure allowing the charity to generate information required for public accountability.

Taxation

The charity is exempt from tax on its charitable activities.

Fund accounting

Unrestricted funds can be used in accordance with the charitable objectives at the discretion of the trustees.

Restricted funds can only be used for particular restricted purposes within the objects of the charity. Restrictions arise when specified by the donor or when funds are raised for particular restricted purposes.

Further explanation of the nature and purpose of each fund is included in the notes to the financial statements.

			Year Ended 31.03.25 £	Year Ended 31.03.24 £
2.	Voluntary Income			
	Gifts and donations		232,114	236,560
	Bequests & Legacies		-	-
	Gift aid		41,634	42,108
	Grants		44,500	14,156
			<u>318,248</u>	<u>292,824</u>
	Grants received, included in the above, are as follows:			
			Year Ended 31.03.25 £	Year Ended 31.03.24 £
	WVCA		-	6,356
	FMS			7,800
	Waterloo Trust		25,000	-
	Festival Medical		19,500	-
	Other		-	-
			<u>44,500</u>	<u>14,156</u>
	3.	Activities for Generating Funds	Year Ended 31.03.25 £	Year Ended 31.03.24 £
		Fundraising events	2,918	1,426
	4.	Investment Income	Year Ended 31.03.25	Year Ended 31.03.24
		Interest	-	765
			-	765
	5.	Fundraising Costs	Year Ended 31.03.25 £	Year Ended 31.03.24 £
			143	372
	6.	Direct Costs of Charitable Activities	Year Ended 31.03.25	Year Ended 31.03.24
		Direct Costs (see note 6) £	Totals £	Totals £
		Charitable activities	23,927	241,867
			265,794	268,594
			£	£
		Grants and program expenditure	241,867	240,536
		Travel expenses	20,353	25,205
		Donations made	-	-
		Core Support Costs	-	-
		Core Overhead Costs	3,574	2,853
			<u>265,794.00</u>	<u>268,594.00</u>



7. Grants Payable

Year Ended 31.03.25	Year Ended 31.03.24
Totals	Totals
£	£
241,868.00	339,056.00

General activities

Notes to the Financial Statments - continued
For the Period 1 April 2025 to 31 March 2025

Analysis of Grants and Program Expenditure by Expenditure Code

	Year Ended 31.03.25	Year Ended 31.03.24
	£	£
Grants to individuals	4,371	1,288
Grants to NGO's	63,867	101,938
Direct Program Expenditure	173,630	137,310
	<u>241,868</u>	<u>240,536</u>

Analysis of Grants and Program Expenditure by Activity

	Mbale CAP	Other Parties	Year Ended 31.03.24 £ Total	Year Ended 31.03.21 £ Total
<i>General Activities</i>				
Wildlife Education Centre	125,275	6,538	131,813	125,625
Landslide Appeal	1,840	-	1,840	-
NGO Support	22,407	-	22,407	17,616
Covid Training	-	-	-	-
Landslide Projects	-	-	-	-
<i>Education Activities</i>				
School Link Funding	135	-	135	600
Education General	3,492	-	3,492	7,199
Education Covid Appeal	-	-	-	-
School Disability Project	670	-	670	372
<i>ATEB Links</i>				
Butmatofu Solar Power Porject	-	-	-	-
Partner Support	1,900	-	1,900	-
Workshop	7,890	-	7,890	-
Engineering Projects	1,989	-	1,989	-
<i>Churches</i>				
Bulatse Catholic Church	-	-	-	-
Bukhumwa Christian Church	150	-	150	-
First Baptist Church	3,000	-	3,000	3,000
Mooni Girls of Hope	516	-	516	988
Kaminkilo Community Proj	11,678	-	11,678	5,218
Hope Ministries Namatala	-	-	-	202
<i>Orphan Supprt</i>				
Goats Project	5,560	-	5,560	5,688
<i>Health Care Projects</i>				
AMB - Bikes	19,616	-	19,616	24,672
PHC - General	15,947	-	15,947	29,359
SHC - Projects	6,140	5,515	11,655	-
<i>Expenditure under £2k</i>				
other activities	1,610	-	1,610	-
Total	<u>-</u>	<u>12,053</u>	<u>241,868</u>	<u>220,539</u>

	Year Ended 31.03.25	Year Ended 31.03.24
8. Governance Costs	£	£
	400	400

9. **Trustee's Remuneration and Benefits**

The trustees provide their services on a voluntary basis therefore there was no trustee's remuneration or other benefits for the period ended 31 March 2021.

Trustees' Expenses

There were no staff costs for the period ended 31 March 2021.

Notes to the Financial Statements - continued
For the Period 1 April 2021 to 31 March 2022

10. **Staff Costs**

There were no staff costs for the year ended 31 March 2020 nor for the year ended 31 March 2021

No employees received emoluments in excess of £60,000.

Notes to the Financial Statements - continued
For the Period 1 April 2025 to 31 March 2025

	Year Ended 31.03.25	Year Ended 31.03.24
12. Debtors: Amounts falling Due within one Year	£	£
Recoverable Gift Aid		
Just Giving		
CAF		
Mbale Uganda		
Other Debtors	99,201	54,320

	Year Ended 31.03.25	Year Ended 31.03.24
13. Creditors: Amounts falling Due within one Year	£	£
Other creditors	582	582
Deferred Grant Income	-	-
Loans repayable	-	-
	582	582

	Unrestricted funds £	Restricted funds £	Year Ended 31.03.25 Total Funds £	Year Ended 31.03.24 Total Funds £
14. Analysis of Net Assets Between Funds				
Fixed assets	1.00	-	1.00	1.00
Investments	-	-	-	-
Current Assets	68,115.00	100,362.00	168,477.00	131,746.00
Current Liabilities	- 3,100.00	2,518.00	- 582.00	- 44,832.00
	65,016.00	102,880.00	167,896.00	86,915.00



15. Movement in Funds	At 31.03.24 £	Net movement in funds £	Transfers between funds £	At 31.03.25 £
Unrestricted Funds				
General fund	32,976	23,280	- 19,892	36,364
Designated fund	8,176	585	- 7,576	1,185
	41,152	23,865	- 27,468	37,549
Restricted funds				
Carbon	10	-	-	10
Churches	12,071	1,974	-	14,045
Education	958	299	1,713	2,970
Engineering	3,053	-	-	3,053
Environmental	1,906	- 450	181	1,637
Healthcare	43,018	50,363	3,188	96,569
Livelihoods	9,593	-	-	9,593
Relief of Poverty	27	- 22,287	22,260	-
University	1,278	-	-	1,278
Wildlife Education Centre	1	1,193	-	1,194
	71,915	30,966	27,468	130,349
Total Funds	113,067	54,831	-	167,898

Notes to the Financial Statements - continued

For the Period 1 April 2025 to 31 March 2025



15. Movement in Funds - continued	Incoming resources £	Resources expended £	Transfer between funds £	Transfer to New Charity £	Movement in funds £
Unrestricted Funds					
General fund	30,674	- 7,394	- 19,892	-	3,388
Designated fund	20,838	- 20,253	- 7,576	-	6,991
	51,512	- 27,647	- 27,468	-	3,603
Restricted funds					
Carbon	-	-	-	-	-
ATEB	13,753	- 11,779	-	-	1,974
Environmental	-	-	-	-	-
Churches	15,643	- 15,344	1,713	-	2,012
Education	3,849	- 4,299	181	-	269
Health orphan	97,583	- 47,220	3,188	-	53,551
Relief of Poverty	7,020	- 5,827	-	-	1,193
University	120	- 22,407	22,260	-	27
Wildlife Education Center	-	-	-	-	-
	131,688	- 131,814	126	-	-
	269,656	- 238,690	27,468	-	58,434
Total Funds	321,168	- 266,337	-	-	54,831

15 Movement in Funds – continued

Carbon - *Funds for use in setting up and running Carbon Offsetting projects*

This includes projects, visits, resources, support and associated expenditure

Churches - *Funds for use in the twinning of churches in Wales and Uganda*

This includes training, communications, projects, visits, development of communities, resources, mutual support and associated expenditure.

Education – *Funds for use in the twinning of schools in Wales and Uganda*

This include training, communication, projects, visits, development of curricula, resources, mutual support and associated expenditure.

Engineering – *Funds for use in environment technology, Engineering and Business Development projects*

This relates to agreed engineering and business projects, including feasibility, design, costing and implement of such projects together with training, monitoring , communications, visits and associated expenditure.

Environment – *Funds for use in connection with environment projects*

This relates to agreed environment projects, including feasibility, design, costing and implementation of such projects with training, monitoring, communications, visits and associated expenditure

Healthcare – *Funds for support of Ambulance, Primary and Secondary healthcare projects*

This relates to initial and ongoing training of community health workers, ambulance and hospital links, surveys, collection and sharing of data, project planning, equipment, travel, operations, feasibility studies, monitoring and associated expenditure.

Livelihoods – *Funds for use in the livelihoods and vulnerable children project*

This relates to the provision of goat(s) to families chosen to be part of the project, including the purchase, treatment, transport, training, support and monitoring of this project and associated expenditure.

Mooni Conference Centre – *Funds for use in connection with the creation of a training and conference centre*

This follows suggestions from Mbale, initially for an eco centre to be followed by development of a visitor, training and conference facilities

Relief of Poverty – *Funds for use in connection with the Relief of Poverty in Uganda*

This includes provision of funds to our local partners in connection with agreed projects to offset the effects of poverty, including the practical work undertaken and the monitoring and administration of such projects

University - *Funds for the is connection with project led by the University of South Wales*

Wildlife Education Centre – *Funds for use in connection with the education centre*

Education resources for local schools

16 Related Party Disclosure

Unincorporated charity, Partnership Overseas networking Trust (Charity Number 1125948)