

**Partnerships Overseas Networking Trust**

**2021 / 2022**

# PONT Trustees Annual Report

Charity number: 1166910



**partnerships tackling poverty together**



The trustees present their report of the charity for the period 1st April 2021 to 31st March 2022. The Financial Statements for the same period are also attached. Partnerships Overseas Networking Trust is a Charitable Incorporated Organisation registered with the Charity Commission under registration number 1166910. It more commonly uses its working name of PONT.

The trustees have adopted the provisions of the Statement of Recommended Practice (SORP) 'Accounting and Reporting by Charities' issued in March 2005

## SECTION A: ADMINISTRATIVE DETAILS

### Trustees

Kathryn Rickards BSc (Chairman of Trustees)  
Dr Geoff Lloyd MRCP MRCGP, Coordinator  
Howard Smith CEng MIET  
Julian Martyn Newton  
Cllr Jayne Brencher  
Marga Quince  
Richard Griffiths  
John Maurice Comissiong  
Dr Gaynor Louise Penrose

### Non Trustees

Paul Westwood, Treasurer

### Principal Office

Cartref  
Pencerrig Street  
Graigwen  
Pontypridd  
CF37 2HS

### Bank

Lloyds Bank, Market Square, Pontypridd

### Independent Financial Examiner

Luke Silver Accountancy & Taxation Services  
25 Ellicombe Close  
Minehead  
Somerset  
TA24 6DQ

## SECTION B: STRUCTURE, GOVERNANCE AND MANAGEMENT

Partnerships Overseas Networking Trust is a registered charity, number 1166910, and is constituted under a trust deed dated 4<sup>th</sup> May 2016.

New trustees are appointed by existing trustees; there is no fixed term of service for a trustee. The trust deed requires that there shall be at least 3 trustees.

The trustees meet at least twice a year and agree policies and regulations to be used by the trust and its committees. They also perform strategic planning. All trustees give their time freely and no trustee remuneration was paid in the year. Kathryn Rickards serves as chairman of the trustees.

The trustees have appointed a Management Team and several committees to oversee the projects, grants and activities of the trust. Each committee is required to fully report its activities and proceedings to the trustees within 2 months. It shall conform to any regulations and policies that have been put in place by the trustees.

The following committees have been adopted.

Name	Area of Operation	Chair
Health	Improvement of Health at community level	Dr Gaynor Penrose
Education	Linking Schools, supporting teachers and teaching through sharing of expertise, awareness raising	Philip Rickards
Livelihoods	Relief and Prevention of Poverty amongst children	Robert Hutt / Jayne Brencher (joint chairs)
Engineering	Engineering and Business Projects to assist communities	Howard Smith
Churches	Overseeing links between Rhondda Cynon Taf (RCT) and Mbale churches and delivering holistic mission.	Howard Smith
Environment	Promotion of sustainable living and prevention of environmental degradation.	Marga Quince
Wildlife Education Centre	Educational resource for the local schools	Dr Geoff Lloyd
University	Mobilising the resources of Tertiary Educational Institutions	Marga Quince
Communications	To enable effective communication with the public on the charities activities	John Comissiong
Finance	Propose financial procedures and regulations to trustees. Oversee the charity's accounts.	Paul Westwood

The majority of these committees maintain a relationship with an equivalent committee in Mbale, Uganda. They have delegated responsibility for the allocation of one or more restricted or designated funds. They arrange for monitoring and evaluation of any projects that they fund.

The Management Team has been created to undertake agreed functions with the consent of the trustees. These include:

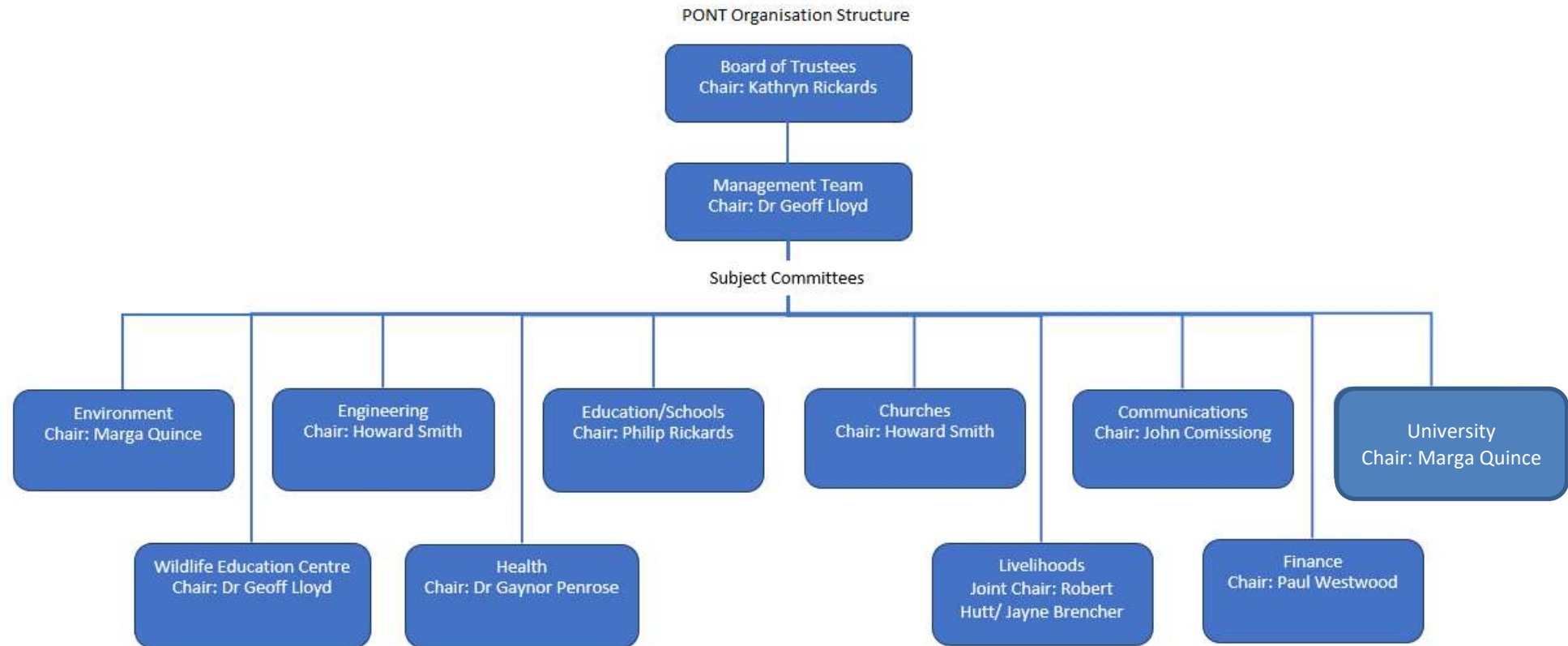
- Management of paid staff and contractors in UK
- Preparation of bids to UK and international donors with, or on behalf of PONT committees
- Development of policy documents
- Development of administrative functions
- Co-ordination with Mbale PONT regarding staffing, funding issues and the development of procedures.

The Management Team generally meets monthly and is chaired by Dr Geoff Lloyd, PONT co-ordinator. It invites others to attend from time to time for agreed purposes.

PONT works in partnership with a number of local organisations in Mbale, Uganda to pursue its objectives. To coordinate the work that we do with NGO partners, we asked them to create an umbrella organisation Mbale-PONT which is governed by a board which has representatives from each of the member NGOs. The majority of the running costs of Mbale PONT are met by a grant from PONT UK.

PONT has also encouraged the creation of a wider body in Mbale - the Mbale Coalition Against Poverty (Mbale-CAP). Mbale-CAP has charitable status in Uganda, receiving grants for Mbale CAP running and project costs, including onward transmission of funds to support NGO partners in delivering and monitoring of projects. In addition to the NGO partners that make up Mbale-PONT this body includes representatives from the district governments of Mbale, Manafwa, Namisindwa and Bududa. Mbale-CAP has also been able to secure funding from other organisations.

## PONT ORGANISATION STRUCTURE



## SECTION C: OBJECTIVES AND ACTIVITIES

The relationship between the community of Rhondda Cynon Taf (RCT) in South Wales and the community of Mbale District in eastern Uganda was started in 2005 as an initiative of the charity Pontypridd Christian Concern (PCC). PCC created a subsidiary organisation "Pontypridd Overseas Networking Trust" to foster this partnership. From the outset the aim was to add our weight to the efforts of our partners to eradicate poverty in the region. Partnerships Overseas Networking Trust was created as a separate charity in 2008 to continue this work.

The objects of the trust are defined in section 4 of the trust deed as follows:-

*The objects of the trust are to relieve sickness and financial hardship and to promote and preserve good health (both physical, spiritual and social) by the provision of funds, goods, services of any kind, including through the provision of counselling and support in such parts of Uganda or the world as the trustees from time to time may think fit particularly but not so as to limit the generality of the foregoing by means of the exchange of people, resources and ideas between the community of the County of Rhondda Cynon Taf in South East Wales and the community of Mbale, Bududa and Manafwa Districts of Eastern Uganda.*

The Trustees have formulated the following Vision and Mission statements:

---

### VISION:

To eliminate absolute poverty throughout the Mbale region of Uganda.

---

### MISSION:

To encourage, empower and resource those helping people out of poverty in the Mbale region, Uganda through a network of personal and organisational relationships whilst learning from each other and enriching one another's lives.

The activities of PONT fall into 3 categories

1. Facilitating visits by individuals and committee representatives between our 2 communities.
2. Linking of institutions and professional groups.
3. Development and grant funding of projects which contribute to the charity's aims.

## VISITS

### VISITS TO MBALE AND UK

During the year 2021/22 we have restarted the visits to Mbale following the easing of Covid Virus Restrictions. In the meantime, video conference calls took place to enable the work to continue and relationships to be maintained.

## LINKING

### EDUCATION AND SCHOOLS

Over 100 Welsh schools have been linked with Partner Schools in Mbale including Schools catering for pupils with disabilities.

The main purpose of the partnerships is to create friendship links between schools and to:

- Extend pupils/staff's views of the world, embracing the concept of global citizenship.
- Enable pupils to learn about and respect one another's cultural differences by sharing of ideas and experiences.
- Enable intercultural dialogue, increased knowledge of one another's societies and enhance the schools' curriculums

### LIVELIHOODS

The PONT project set up to provide support for orphans and other vulnerable children (OVC), currently being delivered through boosting the incomes (livelihoods) of poorer families. This is achieved by assisting with the formation of self-help groups to provide loans for payment of school fees and materials as well as start-up funds for various income generating activities. Goat rearing is another significant part of the scheme. This is an income generating activity which can easily be managed by most families whilst also producing numerous side benefits such as milk and manure. To date over 1,000 goats have been distributed to poor families, many of which look after orphaned children of their relatives in addition to their own children.

Training for the self-help groups and goat beneficiaries and associated dedicated goat supervisors is undertaken with the aim of producing long term sustainable change. 5 local NGOs are supported to run and monitor these activities in conjunction with the Mbale CAP Livelihoods Coordinator.

### CHURCHES

The Pont church committee connects local church congregations in the Pontypridd area with congregations which are part of a Mbale Pont association of churches. This enables joint projects in welfare and mission as well as regular visits for church leaders and members in both directions.



## WILDLIFE EDUCATION CENTRE

The Wildlife Education Centre has been constructed on a small parcel of land overlooking Mbale. This contains a collection of local animals which is used to educate the PONT schools in the importance of preserving local wildlife through interactive sessions and hands on experiences. All schools in the region are invited to bring along classes to the centre free of charge.

## HEALTH

PONT-Mbale Health links aim to address Millennium Goals 4, 5 & 6 through training and mutual learning, and addressing specific challenges in access to health identified by our Mbale partners and their communities:

### PRIMARY CARE

PONT Primary Care Committee links with Mbale CAP Health Committee supporting Community Health Worker development and partner capacity building. GPs and other health staff contribute to training through exchange visits.

PONT-Mbale Primary Health Care aims to improve community health and uptake of preventive government health services by:

- training volunteers, forming a network of community health workers in Village Health Teams
- safeguarding sustainability by retention of volunteers' commitment and skills through ongoing update training

### AMBULANCE

Ambulance staff volunteers from Wales Ambulance Service Trust (WAST) link with Mbale CAP Health committee and PONT PHC in delivering Emergency skills training and development of the Integrated Emergency Response Service

PONT Ambulance team aims to help save lives by:

- supporting volunteers training in lifesaving skills
- facilitating access to skilled health care through development of an integrated call-out transport service for maternity patients and people with emergency health needs

### CWM TAF PONT HOSPITAL GROUP

The Royal Glamorgan Hospital in RCT is linked with the Mbale Regional Referral Hospital (RRH). The link has been in existence since 2007. The linking committee includes staff from Radiology, Endoscopy, Midwifery and A&E.

PONT-Mbale Hospital team aims to support improved care and practice throughout hospital departments and disciplines of Mbale Regional Referral Hospital (MRRH) through:

- training and exchange visits
- service development

## PROJECTS

In addition to being the catalyst for the creation of projects which result from school and church links, PONT develops and funds its own projects using the expertise and money available to it. We invite our community in Wales to donate to restricted funds that are created for each project. In addition PONT accesses grant funding for these projects. The trustees have delegated responsibility for selecting, developing and monitoring these projects to the relevant subject committee.

## EDUCATION AND SCHOOLS

Over 100 Welsh schools have been linked with Partner Schools in Mbale including Schools catering for pupils with disabilities.

The main purpose of the partnerships is to create friendship links between schools and to:

- Extend pupils/staff's views of the world, embracing the concept of global citizenship.
- Enable pupils to learn about and respect one another's cultural differences by sharing of ideas and experiences.
- Enable intercultural dialogue, increased knowledge of one another's societies and enhance the schools' curriculums



### Developments/Projects

Due to the continued effects of COVID there were still only limited activities this year. However in early 2022 members of the PONT team were able to start visiting schools again in Wales. Committee meetings took place via ZOOM.

The Education Officers kept in touch with schools via e mails, Zoom and WhatsApp.

Members of the PONT Education Committee have kept in touch with the team in Mbale via e mails, WhatsApp and Zoom and one member of the Education Committee visited Mbale in February and attended the Mbale PONT Education AGM when she addressed the meeting of the teachers attending.

Many pupils in Mbale have missed almost two years of schooling due to COVID. Some teachers in Wales have been able to remain in contact with their partner school using WhatsApp and, in some cases, Zoom.

The Education team in Mbale continued to arrange a number of training sessions for teachers preparing them for a full return to teaching. Schools fully reopened in early 2022.

As in 2020-2021 the team in Mbale focused on the project "There is always Ability in Disability". The Special Needs Project Committee continued to meet and oversee this. Thanks to the grant obtained previously from St James Place Charitable Foundation we continued to support 88 pupils in either accessing school or vocational training and in some

cases providing them with special equipment such as wheel chairs and support with other equipment/ fees needed for vocational /skills training.

The SNE Committee evaluated its activities and also measured the impact.

PRIMARY: (22) Disabled pupils were identified, attended regularly

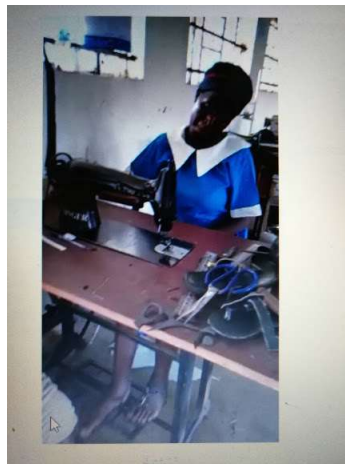
PRIMARY TO SECONDARY: (5) Many were identified, and helped.

SECONDARY: (6) The few identified were given assistance, attended regularly, and were happy.

VOCATIONAL: (10) Those identified were learning fast. But the course was changed to two years and the charges were very high.

TAILORING: (45) All those identified made good progress. Even after one month some were making masks and capes and dresses on top of doing repairs. They received certificates of completion.

The opportunity generated much hope for not only the beneficiaries, but their parents, caregivers, and officials in the Local Governments as well as Mbale CAP.



## LIVELIHOODS

The PONT project set up to provide support for orphans and other vulnerable children is being delivered through boosting the incomes (livelihoods) of poorer families. This is achieved by assisting with the formation of self-help groups to provide loans for payment of school fees and materials as well as start-up funds for various income generating activities. Goat rearing is another significant part of the scheme. This is an income generating activity which can easily be managed by most families whilst also producing numerous side benefits such as milk and manure. To date over 1,000 goats have been distributed to poor families, many of which look after orphaned children of their relatives in addition to their own children.



Training for the self-help groups and goat beneficiaries and associated dedicated goat supervisors is undertaken with the aim of producing long term sustainable change. 5 local NGOs are supported to run and monitor these activities in conjunction with the Mbale CAP Livelihoods Coordinator.

In this period Covid-19 still presented problems, with lockdowns hampering progress. Our two main projects, namely self help groups and goat distribution, continued.

There were moves in Mbale to make established groups more independent and sustainable, so that NGOs can start groups in new areas. However, as a result of Covid-19, funds were low in many self help communities.

Further goats were purchased and it was found that in addition to normal plus factors, owning a goat improved self-esteem. There was tremendous appreciation of the quality of the goats provided and the goat management training provided.

Training in Mbale took place in Leadership, Goat management and Group Dynamics.

On the whole, NGOs were reporting effectively and the importance of this was emphasised.

2 members of PONT Livelihoods visited Mbale.

Due to continued Covid-19 restrictions, fundraising in the UK was based mainly around craft sales and sponsorship. However, the fundraising sub-group continued to work proactively and successfully throughout the year and through their hard work raised more than the target for the year, allowing the projected three -year plan of funding to continue. In early 2022, the activities of the Fundraising subgroup were subsumed into the main Livelihoods Committee.

Geoff Medlow stood down from the Livelihoods Committee at the end of 2021, acting as mentor to the other members until the end of the financial year. His place as Co-Chairperson was assumed by Robert Hutt, with finance being taken over by Judith Ryan and communications by Judith Richards, in both cases very effectively. A huge debt of gratitude is owed to Geoff for his outstanding work for Livelihoods over a number of years and for the solid foundation he has left for his successors.

Profuse thanks must also go to the MCAP Livelihoods team in Mbale for their considerable dedication and hard work in delivering our projects in difficult circumstances



## CHURCHES

The PONT Churches committee has continued to encourage the 9 partnership links between churches in Mbale and South Wales. Representatives of the churches in Wales have continued to meet to share news and encourage each other, strengthening links across denominations. They have facilitated individual churches to financially support their partner church's outreach to the most vulnerable in their Mbale communities. Some examples of this include:



Bethel Baptist Church Penyrheol supported the "Bethel Girls of Hope" project, which gathers 60 girls age 11-19 who are vulnerable to early marriage, early pregnancy, abuse and missed education on two Saturdays each month, to encourage them and teach them on topics such as critical thinking, decision making, menstrual hygiene, puberty, communication skills and empowerment. Donations from friends in Wales provide a simple breakfast and lunch each time.

Temple Baptist Church Pontypridd have continued to support First Baptist Church Mbale's "Hope Ministries" in their work to address the needs of those living HIV/AIDS and young people who left education early. In 2021/22 this support was given to 50 clients and included training in honey production, dressmaking and farming. Those with HIV/AIDS received regular home visits with counselling and help with medication. The vocational training school purchased 4 additional sewing machines.

*Women tasting honey after harvest*





Namatala Church of Uganda's Tailoring School, supported by St Catherine's Church, saw two graduations of students from one of the poorest areas of Mbale, who now have a skill with which they can earn a living.

## HEALTH - PRIMARY HEALTH CARE & AMBULANCES

### Primary Health Care

During the Covid pandemic our Community Health Workers continued to work hard, caring for their communities. Further to the additional training they received the previous year, they continued to educate and advise their communities about Covid-19. They worked closely with the District Health Offices and were key in mobilising people to have vaccination against Covid, leading by example. Health workers in communities near the Kenyan border were instrumental in educating and advising boda-boda drivers, who were working cross-border. We continue to send funds to support a health facilitator in each of our eight partner NGOs, as well as quarterly update training for the 1,200 health workers.

### Secondary Health Care

This year the Welsh Government awarded a large grant for provision of oxygen in Mbale Referral Hospital. The existing supply of oxygen proved to be completely inadequate during the Covid pandemic. The project has provided the purchase of oxygen cylinders, oxygen concentrators, oxygen monitoring equipment and infrastructure upgrades to improve transportation of oxygen around the hospital. There are plans to introduce manifold systems to pipe oxygen directly to the wards and also to obtain an oxygen manufacturing facility. This project is being led by our PONT contact, Dr Adam Hewitt-Smith, Consultant Anaesthesiologist at Mbale Referral Hospital.



### Motorbike Ambulances



These continued to be busier than ever during the Covid pandemic and were one of the few permitted forms of transport during Covid lockdowns. We currently run a fleet of 32 ambulances. A medical and ambulance team were able to visit in February 2022 to review all of our health projects, to conduct a needs assessment and to plan for the future. With our Ugandan partner, Mbale CAP, we met leaders and healthcare facilitators of our partner NGOs, the four District Government Health Officers and visited Mbale Referral Hospital. We were delighted to hear about the incredible impact of our joined up approach,

linking Village Health Workers with local health centres and hospitals through the motorbike ambulance service. Through working with us the District Health Officers have seen huge improvements in their national health rankings. All four districts now rank in the top quartile. Our Ugandan partners are keen to expand both the number of the health workers and the number of motorbike ambulances. This is our agreed focus for the next few years.



## WILDLIFE EDUCATION CENTRE

The Wildlife Centre continued fully operational throughout the year, and the number of school visits and general visitors continue to gradually increase.

All the animals at the wildlife centre continue to do well.

The animals include Colobus Monkeys , red tailed monkeys, Vervet Monkeys (all of which have had young this year), a Serval cat, two Pythons, a Crocodile, a Crested Crane, Egyptian Geese, Camels, donkeys, Ankole cattle, a Ugandan Kob, Gambian pouched rats, and several small mammals.



This year more land was purchased to expand out "safari compound" ready to take more animals next year. The schools visits have now started back up again now that Covid regulations have eased. The main development this year has been the building of an Eco-Tourist Lodge on the site. This has been designed in typical African fashion, with large conical thatches roofs.

The main lodge has a restaurant to seat 64 people and a large lounge area. There are currently 8 Bandas which can house 16 guests. We offer a variety of walks and safaris from the centre. We have also added more Dinosaurs this year, so in addition to the T.Rex, we now also have a full size replica Pterodactyl and a Triceratops. The centre can be used for PONT teams, but can also be rented out to provide an income. All profits from the Lodge will be used to support the PONT-CAP projects.





## ENGINEERING

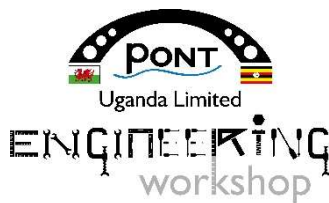


During the period the group worked on various projects, the key ones of which are detailed below. The usual two-week visit to Mbale took place later than usual, in Feb/Mar, once we were confident that had Covid-19 restrictions were sufficiently eased.

350 recorded hours of skilled professional time was contributed free of charge for the purposes of the group. A number of hours of unrecorded time were also given.

### MECHANICAL ENGINEERING WORKSHOP IGA PROJECT

**new**



This is a mechanical engineering workshop that was set up utilising redundant machines donated and shipped to Mbale. The machines are owned by Mbale-PONT, with a separate company (PONT Uganda Ltd.), set up as a social enterprise, operating the facility utilising the machines. This is providing vocational training as well as operating as a business. It is intended that profits will augment the funds available to Mbale-PONT for poverty alleviation projects once the business is sustainable.

The business side of the workshop struggled again during the year due to the continuing effects of Covid and other factors. The workshop is located on Ugandan Ministry of Agriculture land, and during the year the ministry commenced erecting a large building near to the workshop to accommodate farm machinery for rent to local farmers. It is hoped that an agreement will be made such that the workshop will provide maintenance services for the machinery. An unfortunate consequence of the building work is that the entire compound has been surrounded by high security fencing. This means that the workshop is no longer visible to passers-by. When the building work is complete the fencing will be taken down. It is hoped that the presence of the adjacent new building will ultimately result in an increase in passing trade. The business is striving to market its products and services via social media.



The training side of the workshop operation is still suspended due to limitations on educational activities, and potential students' lack of funds.

The usual regular contact has been maintained via electronic means, with the addition of some meetings via videoconferencing, which has proved effective, and will continue in the future. Plans are being prepared to assist in revitalising the business.

**new**

### MOONI WATER PROJECT

The potential water project has been put into abeyance, pending availability of partner NGO Jenga, to implement it.

### MICRO HYDRO ELECTRICITY GENERATION

This system is still out of commission. Some repair work was commenced during the visit, but further significant damage, some due to serious flooding in the area, had occurred since the previous visit. A major assessment needs to be done to determine how to bring the system back into operation.

## SOLAR POWER

The primary school at Bumatofu was visited and surveyed with a view to commencing a project there during the 2020 engineering visit, subject to funding.

Stage 1 of the system for the primary school at Bumatofu was completed during the visit, providing electricity in 2 buildings. A laptop was also provided to the Head Teacher with basic training in its use. It is planned to complete the project during the coming year, extending the system to the other buildings.



## PUBLIC BENEFIT GUIDANCE

The trustees confirm that they have referred to the guidance contained in the Charity Commission's general guidance on public benefit when reviewing the Trust's aims and objectives and in planning future activities.

## SECTION D: RESERVES POLICY

The PONT trustees have adopted the following reserves policy

### **General Fund**

The annual budgets for the General Fund include the following expenditure

1. the core costs of the charity
2. the grants given to cover the core costs of Mbale PONT.

The General Fund will hold sufficient assets to cover between 6 and 9 months of these expenditures.

### **Designated Funds**

The PONT Management Team may from time to time designate funds to be used by a committee to cover future project expenditure. Such funds must be spent within 12 months of their designation unless a longer period has been specifically authorised by the trustees.

## SECTION E: DECLARATION

### STATEMENT OF TRUSTEES RESPONSIBILITIES

The trustees are responsible for preparing the Report of the Trustees and the financial statements in accordance with applicable law and United Kingdom Generally Accepted Accounting Practice.

The law applicable to charities in England and Wales, the Charities Act 1993, Charity (Accounts and Reports) Regulations 2008 and the provisions of the trust deed requires the trustees to prepare financial statements for each financial year which give a true and fair view of the state of affairs of the charity and of the incoming resources and application of resources, including the income and expenditure, of the charity for that period. In preparing those financial statements, the trustees are required to

- select suitable accounting policies and then apply them consistently;
- observe the methods and principles in the Charity SORP;
- make judgements and estimates that are reasonable and prudent;
- prepare the financial statements on the going concern basis unless it is inappropriate to presume that the charity will continue in business

The trustees are responsible for keeping proper accounting records which disclose with reasonable accuracy at any time the financial position of the charity and to enable them to ensure that the financial statements comply with the Charities Act 1993, the Charity (Accounts and Reports) Regulations 2008 and the provisions of the trust deed. They are also responsible for safeguarding the assets of the charity and hence for taking reasonable steps for the prevention and detection of fraud and other irregularities.

The trustees declare that they have approved the trustees' report above.

Signed on behalf of the trustees on by:

Kathryn Rickards

Trustee

Geoff Lloyd

Coordinator

**Report of The Trustees And  
Unaudited Financial Statements  
For the Year Ended  
31 March 2022  
For  
Partnership Overseas Networking Trust CIO**

	Page
Report of the trustees	20-23
Independent Examiners Report	24
Statement of Financial Activities	25
Statement of Financial Position	26
Notes to the Financial Statements	27-35

## **PARTNERSHIP OVERSEA NETWORKING TRUST CIO**

### **REPORT OF THE TRUSTEES**

#### **FOR THE YEAR ENDED 31 MARCH 2022**

The trustees present their report of the charity for the period 1st April 2021 to 31st March 2022. The Financial Statements for the same period are also attached. Partnerships Overseas Networking Trust is a Charitable Incorporated Organisation registered with the Charity Commission under registration number 1166910. It more commonly uses its working name of PONT.

The trustees have adopted the provisions of the Statement of Recommended Practice (SORP) 'Accounting and Reporting by Charities' issued in March 2005

### **OBJECTIVE AND ACTIVITIES**

The relationship between the community of Rhondda Cynon Taff in South Wales and the community of Mbale District in eastern Uganda was started in 2005 as an initiative of the charity Pontypridd Christian Concern (PCC). PCC created a subsidiary organisation "Pontypridd Overseas Networking Trust" to foster this partnership. From the outset the aim was to add our weight to the efforts of our partners to eradicate poverty in the region.

The Partnerships Overseas Networking Trust CIO (Charity number 1166910) commenced its activities with effect from 1 January 2018, taking over the activities and assets from an unincorporated charity, Partnerships Overseas Networking Trust (Charity number 1125948). The charity was incorporated on the 1st of January 2018 and is governed by its trustees in accordance with its constitution dated 4<sup>th</sup> May 2016.

#### **The objects of the trust as defined in section 4 of the trust deed as follows:-**

The objects of the trust are to relieve sickness and financial hardship and to promote and preserve good health (both physical, spiritual and social) by the provision of funds, goods, services of any kind, including through the provision of counselling and support in such parts of Uganda or the world as the trustees from time to time may think fit particularly but not so as to limit the generality of the foregoing by means of the exchange of people, resources and ideas between the community of the County of Rhondda Cynon Taff in South East Wales and the community of Mbale, Bududa and Manafwa Districts of Eastern Uganda.

#### **The Trustees have formulated the following Vision and Mission Statements Vision:**

To eliminate absolute poverty throughout the Mbale region of Uganda. Mission:

To encourage, empower and resource those helping people out of poverty in the Mbale region, Uganda through a network of personal and organisational relationships whilst learning from each other and enriching one another's lives.

The activities of PONT fall into 3 categories

1. Facilitating visits by individuals and committee representatives between our 2 communities.
2. Linking of institutions and professional groups.
3. Development and grant funding of projects which contribute to the charity's aims.

The following section describe each of these in turn.

## STRUCTURE, GOVERNANCE AND MANAGEMENT

### Governing Document

The Partnership Overseas Networking Trust is a register Charitable Incorporated Organisation, number 1166910.

The Partnership Overseas Networking Trust CIO (Charity number 1166910) commenced its activities with effect from 1 January 2018.

### Recruitment and Appointment of New Trustees

New trustees are appointed by existing trustees; there is no fixed term of service for a trustee. The trust deed requires that there shall be at least 3 trustees.

The trustees meet at least twice a year and agree policies and regulations to be used by the trust and its committees. They also perform strategic planning. All trustees give their time freely and no trustee remuneration was paid in the year. Kathryn Rickards serves as chairman of the trustees.

The trustees have appointed a Management Team and several committees to oversee the projects, grants and activities of the trust. Each committee is required to fully report its activities and proceedings to the trustees within 2 months. It shall conform to any regulations and policies that have been put in place by the trustees.

The following committees have been adopted.

Name	Area of Operation	Chair
Health	Improvement of Health at community level	Dr Gaynor Penrose
Education	Linking Schools, supporting teachers and teaching through sharing of expertise, awareness raising	Philip Rickards
Livelihoods	Relief and Prevention of Poverty amongst children	Robert Hutt / Jayne Brencher (joint chairs)
Engineering	Engineering and Business Projects to assist communities	Howard Smith
Churches	Overseeing links between Rhondda Cynon Taf (RCT) and Mbale churches and delivering holistic mission.	Howard Smith
Environment	Promotion of sustainable living and prevention of environmental degradation.	Marga Quince
Wildlife Education Centre	Educational resource for the local schools	Dr Geoff Lloyd
University	Mobilising the resources of Tertiary Educational Institutions	Marga Quince
Communications	To enable effective communication with the public on the charities activities	John Comissiong
Finance	Propose financial procedures and regulations to trustees. Oversee the charity's accounts.	Paul Westwood



The majority of these committees maintain a relationship with an equivalent committee in Mbale, Uganda. They have delegated responsibility for the allocation of one or more restricted or designated funds. They arrange for monitoring and evaluation of any projects that they fund.

The Management Team has been created to undertake agreed functions with the consent of the trustees. These include:

- Management of paid staff and contractors in UK
- Preparation of bids to UK and international donors with, or on behalf of PONT committees
- Development of policy documents
- Development of administrative functions
- Co-ordination with Mbale PONT regarding staffing, funding issues and the development of procedures.

The Management Team generally meets monthly and is chaired by Dr Geoff Lloyd, PONT co-ordinator. It invites others to attend from time to time for agreed purposes.

PONT works in partnership with a number of local organisations in Mbale, Uganda to pursue its objectives. To coordinate the work that we do with NGO partners, we asked them to create an umbrella organisation Mbale-PONT which is governed by a board which has representatives from each of the member NGOs. The majority of the running costs of Mbale PONT are met by a grant from PONT UK.

PONT has also encouraged the creation of a wider body in Mbale - the Mbale Coalition Against Poverty (Mbale-CAP). Mbale-CAP has charitable status in Uganda, receiving grants for Mbale CAP running and project costs, including onward transmission of funds to support NGO partners in delivering and monitoring of projects. In addition to the NGO partners that make up Mbale-PONT this body includes representatives from the district governments of Mbale, Manafwa and Bududa. Mbale-CAP has also been able to secure funding from other organisations.

## **REFERENCES AND ADMINISTRATIVE DETAILS**

### **Trustees**

Kathryn Rickards BSc (Chairman of Trustees)  
Dr Geoff Lloyd MRCP MRCGP, Coordinator  
Howard Smith CEng MIET  
Julian Martyn Newton  
Cllr Jayne Brencher  
Marga Quince  
Richard Griffiths  
John Maurice Comissiong  
Dr Gaynor Louise Penrose

### **Non Trustees**

Paul Westwood, Treasurer

### **Principal Office**

Cartref  
Pencerrig Street  
Graigwen  
Pontypridd  
CF37 2HS

### **Bank**

Lloyds Bank, Market Square, Pontypridd

### **Independent Financial Examiner**

Luke Silver Accountancy & Taxation Services  
25 Ellicombe Close  
Minehead  
Somerset  
TA24 6DQ

Approved by order of the board of trustees on 29/01/2023 and signed on its behalf by:

.....

Dr Geoff Lloyd - Trustee

## INDEPENDENT EXAMINER'S REPORT ON THE ACCOUNTS

### Accruals Accounts

Report to the trustees of Partnership Overseas Networking Trust

Registered Charity number 1166910

On the accounts for the year ended 31 March 2022

Set out on the following pages

Respective responsibilities of trustees and examiner

The charity's trustees are responsible for the preparation of the accounts. The charity's trustees consider that an audit is not required for this year (under section 144(2) of the Charities Act 2011 (the 2011 Act) and that an independent examination is needed.

It is my responsibility to:

- Examine the accounts (under section 145 of the 2022 Act;
- To follow the procedures laid down in the General Directions given by the Charity Commission (under section 145(5)(b) of the 2011 Act; and
- State whether particular matters have come to my attention.

### Basis of independent examiner's report

My examination was carried out in accordance with the General Directions given by the Charity Commissioners. An examination includes a review of the accounting records kept by the charity and a comparison of the accounts presented with those records. It also includes consideration of any unusual items or disclosures in the accounts, and seeking explanations from you as trustees concerning any such matters. The procedures undertaken do not provide all the evidence that would be required in an audit, and consequently no opinion is given as to whether the accounts a 'true and fair view' and the report is limited to those matters set out in the statement below.

### Independent examiner's statement

In connection with my examination, no matter has come to my attention:

- (1) which gives me reasonable cause to believe that in any material respect the requirements
  - to keep accounting records in accordance with section 130 of the 2011 Act; and
  - to prepare accounts which accord with the accounting records and comply with the accounting requirements of the 2011 Act

have not been met: or

- (2) to which, in my opinion, attention should be drawn in order to enable a proper understanding of the accounts to be reached.

**Signed *L A Silver***

Date: 24 January 2023

Luke Silver HNC Business & Finance  
Accountancy Practitioner

25 Ellicombe Close, Minehead, Somerset. TA24 6DQ

**Partnerships Overseas Networking Trust**

**Statement of Financial Activities**  
**For the Period 1 April 2021 to 31 March 2022**

	Notes	Unrestricted funds £	Restricted funds £	Year Ended 31.03.22 Total funds £	Year Ended 31.03.21 Total funds
<b>Incoming Resources</b>					
Voluntary income	2	39,874	438,091	<b>477,965</b>	166,482
Investment income		-	-	-	272
Activities for generating funds	3	-	1,426	<b>1,426</b>	340
<b>Total incoming resources</b>		<b>39,874</b>	<b>439,517</b>	<b>479,391</b>	<b>167,094</b>
<b>Resources Expended</b>					
<b>Cost of generating funds</b>					
Fundraising costs	4	-	-	-	-
<b>Charitable activities</b>					
Charitable activities	5	15,726	484,518	<b>500,244</b>	123,235
<b>Governance costs</b>	7	400	-	<b>400</b>	400
		<b>16,126</b>	<b>484,518</b>	<b>500,644</b>	<b>123,635</b>
<b>Net Incoming Resources</b>		<b>23,748</b>	<b>(45,001)</b>	<b>(21,253)</b>	<b>43,459</b>
		<b>(10,169)</b>	<b>10,169</b>	<b>-</b>	<b>-</b>
		<b>13,579</b>	<b>(34,832)</b>	<b>(21,253)</b>	<b>43,459</b>
<b>RECONCILIATION OF FUNDS</b>					
<b>Total funds brought forward</b>		<b>32,162</b>	<b>97,267</b>	<b>129,429</b>	<b>85,970</b>
<b>Total funds carried forward</b>		<b>45,741</b>	<b>62,435</b>	<b>108,176</b>	<b>129,429</b>

**Partnerships Overseas Networking Trust****Balance Sheet  
As at 31 March 2022**

	Notes	Unrestricted funds £	Restricted funds £	Year Ended 31.03.22 Total funds £
<b>Fixed Assets</b>				
	11	-	-	-
		-	-	-
<b>Current Assets</b>				
Debtors	11	14,385	59,054	73,439
Cash at bank		41,007	57,362	98,369
		55,392	116,416	171,808
<b>Current Liabilities</b>				
Creditors: amounts falling due within one year	12	(9,650)	(53,982)	(63,632)
<b>Net Current Assets</b>		45,742	62,434	108,176
<b>Net Assets</b>		45,742	62,434	108,176
<b>Funds</b>	14			
Unrestricted funds				45,741
Restricted funds				62,435
				108,176

## **Partnerships Overseas Networking Trust**

### **Notes to the Financial Statements For the Period 1 April 2021 to 31 March 2022**

#### **1 Accounting Policies**

##### **Basis of preparing the financial statements**

No material uncertainties that may cast significant doubt the ability of the charity to continue as a going concern have been identified by the trustees.

Therefore the financial statements have been prepared on a going concern basis.

##### **Accounting convention**

The financial statements have been prepared under the historic cost convention, and in accordance with the Financial Reporting Standard for Smaller Entities (effective April 2008), the Charities Act 1993 and the requirements of the Statement of Recommended Practice, Accounting and Reporting by Charities.

##### **Exemption from preparing a cash flow statement**

Exemption has been taken from preparing a cash flow statement on the grounds that the charity qualifies as a small charity.

##### **Incoming resources**

All incoming resources are included on the Statement of Financial Activities when the charity is legally entitled to the income and the amount can be quantified with reasonable accuracy.

##### **Resources expended**

Expenditure is accounted for on an accruals basis and has been classified under headings that aggregate all cost related to the category. Where costs cannot be directly attributed to particular headings they have been allocated to activities on a basis consistent with the use of resources.

##### **Cost of generating funds**

Costs of generating funds comprise those costs directly attributable to raising funds through activities.

##### **Other Fixed assets**

The trustees has determined to depreciate the cost of equipment at 25% of cost per annum.

##### **Governance costs**

Governance costs include direct and related support costs relating to the governance infrastructure allowing the charity to generate information required for public accountability.

##### **Taxation**

The charity is exempt from tax on its charitable activities.

##### **Fund accounting**

Unrestricted funds can be used in accordance with the charitable objectives at the discretion of the trustees.

**Partnerships Overseas Networking Trust****Notes to the Financial Statements - continued**  
**For the Period 1 April 2021 to 31 March 2022**

	Year Ended 31.03.22	Year Ended 31.03.21
<b>2. Voluntary Income</b>	£	£
Gifts and donations	165,561	124,292
Bequests & Legacies	-	-
Gift aid	42,404	20,138
Grants	270,000	22,052
	<hr/> 477,965	<hr/> 166,482
<b>Grants received, included in the above, are as follows:</b>		
	Year Ended 31.03.22	Year Ended 31.03.21
	£	£
Welsh Assembly Government	270,000	-
THET PIP	-	7,880
Global Poverty Action Fund (DFID)	-	4,172
Good Gifts	-	10,000
Other	-	-
	<hr/> 270,000	<hr/> 22,052
<b>3. Activities for Generating Funds</b>	Year Ended 31.03.22	Year Ended 31.03.21
	£	£
Fundraising events	1,426	340
<b>4. Investment Income</b>	Year Ended 31.03.22	Year Ended 31.03.21
	£	£
Interest	-	272.00
Dividend Payments	-	-
Loan Interest	-	-
	<hr/> -	<hr/> 272
<b>5. Fundraising Costs</b>	Year Ended 31.03.22	Year Ended 31.03.21
	£	£
	-	-

## Partnerships Overseas Networking Trust

**Notes to the Financial Statements - continued**  
**For the Period 1 April 2021 to 31 March 2022**

6. Direct Costs of Charitable Activities			Year Ended 31.03.22	Year Ended 31.03.21
	Direct Costs (see note 6) £	Grant funding activity	Totals £	Totals £
Charitable activities	9,628	490,616	500,244	194,410
<b><i>Grants and program expenditure</i></b>			£ 490,616	£ 115,681
Travel expenses			3,026	-
<b><i>Donations made</i></b>			-	-
Professional fees	(moved from governance costs)		786	4,378
Core Support Costs			786	4,378
Admin support			-	-
Promotional costs			-	-
Printing/photocopying			1,828	20
Insurance			1,268	1,256
other premise costs			-	-
website			176	120
accounting and audit			2,243	1,650
other fees			135	-
Bank Charges	(moved from governance costs)		166	130
Core Overhead Costs			5,815	3,176
			500,244	123,235



## Partnerships Overseas Networking Trust

Notes to the Financial Statements - continued  
For the Period 1 April 2021 to 31 March 2022

Analysis of Grants and Program Expenditure by Expenditure Code	Year Ended 31.03.22 £	Year Ended 31.03.21 £
Grants to individuals	1,000	3,230
Grants to NGO's	259,098	41,932
Direct Program Expenditure	225,793	70,519
	<u>485,891</u>	<u>115,681</u>

Analysis of Grants and Program Expenditure by Activity			Year Ended 31.03.22 £	Year Ended 31.03.21 £
	Mbale CAP	Other Parties	Total	Total
<i>General Activities</i>				
Wildlife Education Centre	143,345	-	143,345	39,015
Cholera appeal	-	-	-	6,777
NGO Support	10,819	-	10,819	12,713
Covid Training	-	-	-	-
Landslide Projects	1,458	-	1,458	3,230
<i>Education Activities</i>				
School Link Funding	1,285	-	1,285	-
Education General	1,546	-	1,546	2,485
Education Covid Appeal	-	-	-	1,841
School Disability Project	6,000	-	6,000	5,000
<i>ATEB Links</i>				
Butmatofu Solar Power Project	3,062	-	3,062	2,439
Workshop	411	-	411	-
<i>Churches</i>				
First Baptist Church	3,803	-	3,803	4,600
Mooni Girls of Hope	1,518	-	1,518	1,400
Kaminkilo Community Project	1,266	-	1,266	1,167
Hope Ministries Namatala	5,000	-	5,000	1,260
<i>Orphan Support</i>				
Goats Project	5,778	-	5,778	11,811
<i>Health Care Projects</i>				
AMB - Bikes	16,132	-	16,132	12,337
PHC - General	14,456	-	14,456	9,375
SHC - Projects	-	-	-	-
Mbale Regional Hospital - Oxygen Project	-	270,000	270,000	-
<i>Expenditure under £2k</i>				
other activities		13	13	230
Total	215,879	270,013	485,892	115,680

8.			Year Ended 31.03.22 £	Year Ended 31.03.21 £
	<b>Governance Costs</b>		400	400

**Partnerships Overseas Networking Trust****Notes to the Financial Statements - continued**  
**For the Period 1 April 2021 to 31 March 2022****9. Trustee's Remuneration and Benefits**

The trustees provide their services on a voluntary basis therefore there was no trustee's remuneration or other benefits for the period ended 31 March 2022 or for the period ended 31 March 2021.

**Trustees' Expenses**

There were no staff costs for the period ended 31 March 2022 or for the period ended 31 March 2021.

**10 Staff Costs**

There were no staff costs for the year ended 31 March 2022 nor for the year ended 31 March 2021

No employees received emoluments in excess of £60,000.

11. Debtors: Amounts falling Due within one Year		Year Ended 31.03.22	Year Ended 31.03.21
		£	£
	Other Debtors	<u>73,439</u>	<u>40,331</u>

12. Creditors: Amounts falling Due within one Year		Year Ended 31.03.22	Year Ended 31.03.21
		£	£
	Other creditors	54,382	382
	Deferred Grant Income	9,250	9,250
		<u>63,632</u>	<u>9,632</u>

13. Analysis of Net Assets Between Funds		Unrestricted funds £	Restricted funds £	Year Ended 31.03.22	Year Ended 31.03.21
				Total Funds £	Total Funds £
	Fixed assets	1	-	1	1
	Investments	-	-	-	-
	Current Assets	55,391	116,416	171,807	139,061
	Current Liabilities	(9,650)	(53,982)	(63,632)	(9,632)
		<u>45,742</u>	<u>62,434</u>	<u>108,176</u>	<u>129,430</u>

## Partnerships Overseas Networking Trust

## Notes to the Financial Statements - continued

For the Period 1 April 2021 to 31 March 2022

15. Movement in Funds	At 31.03.21 £	Net movement in funds £	Transfers between funds £	At 31.03.22 £
<b>Unrestricted Funds</b>				
General fund	12,954	19,163	7,361	39,478
Designated fund	19,208	4,586	(17,530)	6,264
	<u>32,162</u>	<u>23,749</u>	<u>(10,169)</u>	<u>45,742</u>
<b>Restricted funds</b>				
Ambulance	(2)	-	-	(2)
Carbon	10	-	-	10
Churches	7,257	5,069	-	12,326
Disaster Relief	-	-	-	-
Education	7,390	(4,074)	-	3,316
Engineering	4,756	(793)	-	3,963
Environmental	1,906	-	-	1,906
Health	30,178	(5,069)	-	25,109
Wildlife Education Centre	34,300	(30,720)	-	3,580
Livelihoods	10,186	716	47	10,949
Relief of Poverty	8	(10,131)	10,122	(1)
University	1,278	-	-	1,278
Primary Health	-	-	-	-
Secondary Health	-	-	-	-
	<u>97,267</u>	<u>(45,002)</u>	<u>10,169</u>	<u>62,434</u>
<b>Total Funds</b>	<u>129,429</u>	<u>(21,253)</u>	<u>-</u>	<u>108,176</u>

## Partnerships Overseas Networking Trust

## Notes to the Financial Statements - continued

For the Period 1 April 2021 to 31 March 2022

15.	<b>Movement in Funds - continued</b>	Incoming resources £	Resources expended £	Transfer between funds £	Transfer to New Charity £	Movement in funds £
	<b>Unrestricted Funds</b>					
	General fund	27,537	(8,374)	7,361	-	26,524
	Designated fund	12,337	(7,751)	(17,530)	-	(12,944)
		39,874	(16,125)	(10,169)	-	13,580
	<b>Restricted funds</b>					
	Ambulance	-	-	-	-	-
	Carbon	-	-	-	-	-
	Churches	16,670	(11,601)	-	-	5,069
	Disaster Relief	-	-	-	-	-
	Education	4,782	(8,856)	-	-	(4,074)
	ATEB	2,680	(3,473)	-	-	(793)
	Environmental	-	-	-	-	-
	Health	295,560	(300,629)	-	-	(5,069)
	Mbale Visitors Centre	112,625	(143,345)	-	-	(30,720)
	Livelihood	6,512	(5,796)	47	-	763
	Relief of Poverty	688	(10,819)	10,122	-	(9)
	University	-	-	-	-	-
	Medical	-	-	-	-	-
	Hospital Links	-	-	-	-	-
		439,517	(484,519)	10,169	-	(34,833)
	<b>Total Funds</b>	479,391	(500,644)	-	-	(21,253)

## Partnerships Overseas Networking Trust

Notes to the Financial Statements - continued  
For the Period 1 April 2021 to 31 March 2022

## 15. Movement in Funds - continued

<b>Primary Health</b>	<b>Funds for Support of Primary Health Care</b> This relates to initial and ongoing training of community health workers, surveys, collection and sharing of data, project planning and associated expenditure.
<b>Livelihoods</b>	<b>Funds for use in the Livelihoods and Vulnerable Children Project (OVC)</b> This relates to the provision of goat(s) to families chosen to be part of the project, including the purchase, treatment, transport, training, support and monitoring of this project and associated expenditure.
<b>Health</b>	<b>Funds for support of Primary and Secondary Health Care</b> This relates to initial and ongoing training of community health workers, surveys, collection and sharing of data, project planning, equipment, travel, operation, feasibility studies, monitoring and associated expenditure.
<b>Education</b>	<b>Funds for use in the twinning of schools in Wales and Uganda</b> This includes training, communications, projects, visits, development of curricula, resources, mutual support and associated expenditure.
<b>Churches</b>	<b>Funds for use in the twinning of churches in Wales and Uganda</b> This includes training, communications, projects, visits, development of communities, resources, mutual support and associated expenditure.
<b>Carbon Offset</b>	<b>Funds for use in setting up and running Carbon Offsetting projects</b> This includes projects, visits, resources, support and associated expenditure.
<b>ATEB</b>	<b>Funds for use in Environmental Technology, Engineering and Business Development projects</b> This relates to agreed engineering and business projects, including feasibility, design, costing and implementation of such projects together with training, monitoring communications, visits and associated expenditure.
<b>Environment</b>	<b>Funds for use in connection with Environmental projects</b> This relates to agreed Environmental projects, including feasibility, design, costing and implementation of such projects together with training, monitoring communications, visits and associated expenditure.
<b>Ambulance Project</b>	<b>Funds for the establishment of an Ambulance Service</b> Funds for the establishment of an Ambulance type provision for patient transport of various kinds (such as cycle/motorcycle/motorised ambulance) including training, operation, communications, equipment, monitoring and associated expenditure.
<b>Secondary Health</b>	<b>Funds for development of Hospital Links between Wales and Uganda</b> This includes the provision of equipment, training, travel, operation, feasibility studies, monitoring and associated expenditure.

## Partnerships Overseas Networking Trust

## Notes to the Financial Statements - continued

For the Period 1 April 2021 to 31 March 2022

## 15. Movement in Funds - continued

<b>Disaster Relief</b>	<b>Funds for responding to disaster situations in Uganda</b> Funds for responding to mudslide disaster in partnership with our local partners - ongoing response based upon monitoring of needs; feedback provided by local responses and assessments made during other visits.
<b>Partner Support</b>	<b>Funds donated for specific support to ngo's and individuals</b> Funds donated for specific support for ngo's and individuals, including training, community work and health needs.
<b>Education Fund</b>	<b>Grant aided funds for implementation of Education</b> This includes projects, visits, resources, support and associated expenditure.
<b>Community Health</b>	<b>Funds for implementation of specific pre-identified projects</b> Funds received from fund raising bodies following applications to specific projects relating to community health within the charity's overall remit [e/g Good Gifts].
<b>Relief of Poverty</b>	<b>Funds for use in connection with the Relief of Poverty in Uganda</b> This includes provision of funds to our local partners in connection with agreed projects to offset the effects of poverty, including the practical work undertaken and the monitoring and administration of such projects.
<b>Mooni Conference Centre</b>	<b>Funds for use in connection with the creation of a Training and Conference centre</b> This follows suggestions from Mbale, initially for an eco-centre to be followed by development of a visitor, training and conference facilities
<b>Wildlife Education Centre</b>	Educational resources for local schools
<b>University</b>	<b>Funds for use in connection with projects led by the University of South Wales.</b>

## 16. Related Party Disclosure

Unincorporated charity, Partnership Overseas Networking Trust (Charity Number 1125948)