



Partnerships Overseas Networking Trust

2020 / 2021

PONT Trustees Annual Report

Charity number: 1166910



partnerships tackling poverty together

The trustees present their report of the charity for the period 1st April 2020 to 31st March 2021. The Financial Statements for the same period are also attached. Partnerships Overseas Networking Trust is a Charitable Incorporated Organisation registered with the Charity Commission under registration number 1166910. It more commonly uses its working name of PONT.

Prior to the CIO being registered with the Charity Commission, PONT was a registered charity under registration number 1125948. During this financial year, 1125948 was kept open to allow the transfer of assets and operations from this charity to the CIO. A separate report is available for charity 1125948, from the Charity Commission.

The trustees have adopted the provisions of the Statement of Recommended Practice (SORP) 'Accounting and Reporting by Charities' issued in March 2005

SECTION A: ADMINISTRATIVE DETAILS

Trustees

Dr Geoff Lloyd MRCP MRCGP, Coordinator (Chairman of Trustees)
Geoff Herbert RIBA, Treasurer
p
John Phillips LLB
Kathryn Rickards BSc
Howard Smith CEng MIET
Julian Martyn Newton
Cllr Jayne Brencher
Marga Quince
Richard Griffiths

Principal Office

Cartref
Pencerrig Street
Graigwen
Pontypridd
CF37 2HS

Bank

Lloyds Bank, Market Square, Pontypridd

Independent Financial Examiner

Luke Silver HNC Business & Finance Accountancy Practitioner
12 Oliver Street,
Pontypridd,
Mid Glamorgan.
CF37 2RD

SECTION B: STRUCTURE, GOVERNANCE AND MANAGEMENT

Partnerships Overseas Networking Trust is a registered charity, number 1166910, and is constituted under a trust deed dated 4th May 2016.

New trustees are appointed by existing trustees; there is no fixed term of service for a trustee. The trust deed requires that there shall be at least 3 trustees.

The trustees meet at least twice a year and agree policies and regulations to be used by the trust and its committees. They also perform strategic planning. All trustees give their time freely and no trustee remuneration was paid in the year. Geoff Lloyd serves as chairman of the trustees.

The trustees have appointed a Management Team and several committees to oversee the projects, grants and activities of the trust. Each committee is required to fully report its activities and proceedings to the trustees within 2 months. It shall conform to any regulations and policies that have been put in place by the trustees.

The following committees have been adopted.

Name	Area of Operation	Chair
Health	Improvement of Health at community level, hospitals and Ambulance response service provision	Dr Geoff Lloyd
Education	Linking Schools, supporting teachers and teaching through sharing of expertise, awareness raising	Philip Rickards
Livelihoods	Relief and Prevention of Poverty amongst children	Geoff Medlow / Jayne Brencher (joint chairs)
Engineering	Engineering Projects to assist communities	Howard Smith
Churches	Overseeing links between Rhondda Cynon Taf (RCT) and Mbale churches and delivering holistic mission.	Melanie Hutt
Environment	Promotion of sustainable living and prevention of environmental degradation.	Marga Quince
Wildlife Education Centre	Educational resource for the local schools	Dr Geoff Lloyd
University	Mobilising the resources of Tertiary Educational Institutions	Marga Quince
Finance	Propose financial procedures and regulations to trustees. Oversee the charity's accounts.	Paul Westwood / Geoff Herbert

The majority of these committees maintain a relationship with an equivalent committee in Mbale, Uganda. They have delegated responsibility for the allocation of one or more restricted or designated funds. They arrange for monitoring and evaluation of any projects that they fund.

The Management Team has been created to undertake agreed functions with the consent of the trustees. These include:

- Management of paid staff and contractors in UK
- Preparation of bids to UK and international donors with, or on behalf of PONT committees
- Development of policy documents
- Development of administrative functions
- Co-ordination with Mbale PONT regarding staffing, funding issues and the development of procedures.

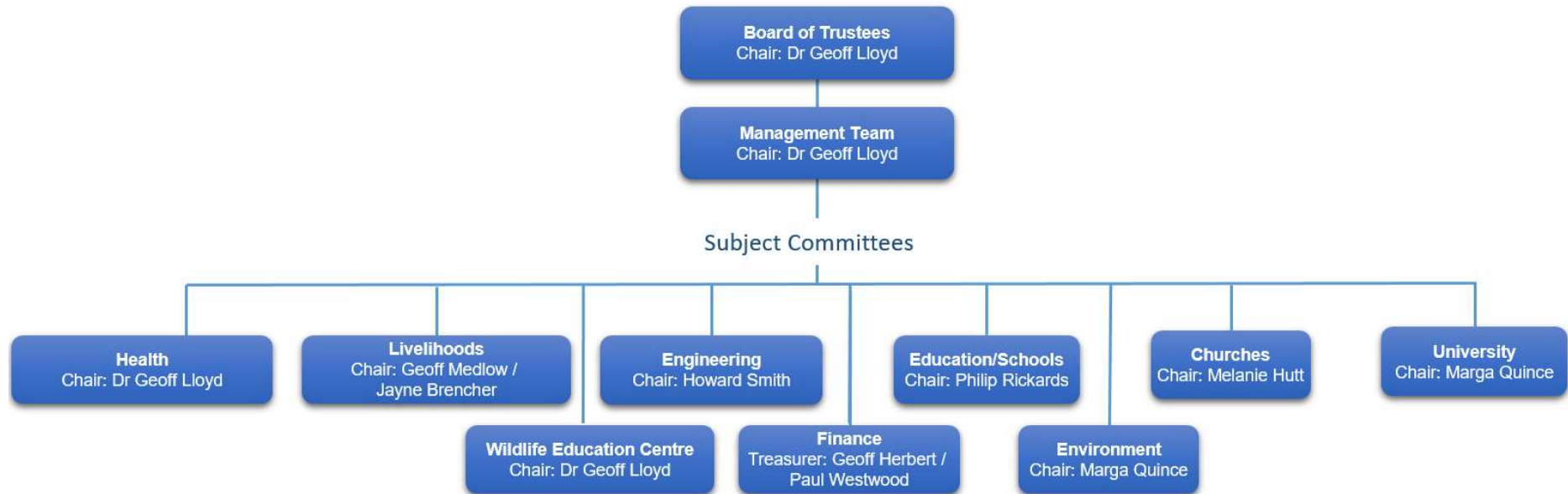
The Management Team generally meets monthly and is chaired by Dr Geoff Lloyd, PONT co-ordinator. It invites others to attend from time to time for agreed purposes.

PONT works in partnership with a number of local organisations in Mbale, Uganda to pursue its objectives. To coordinate the work that we do with NGO partners, we asked them to create an umbrella organisation Mbale-PONT which is governed by a board which has representatives from each of the member NGOs. The majority of the running costs of Mbale PONT are met by a grant from PONT UK.

PONT has also encouraged the creation of a wider body in Mbale - the Mbale Coalition Against Poverty (Mbale-CAP). Mbale-CAP has charitable status in Uganda, receiving grants for Mbale CAP running and project costs, including onward transmission of funds to support NGO partners in delivering and monitoring of projects. In addition to the NGO partners that make up Mbale-PONT this body includes representatives from the district governments of Mbale, Manafwa and Bududa. Mbale-CAP has also been able to secure funding from other organisations.

PONT is the sole owner of the company PONT Commercial Services Ltd (PONT CS), which carries on trading activities for the benefit of the charity. Surplus profits from this company are passed back to PONT. PONT CS has 3 directors: Keith Lewis, Jayne Brencher and Chris Johnes. PONT CS has not actively traded during the year, but remains part of PONT, ready to be utilised in future should it be required.

PONT Organisation Structure



SECTION C: OBJECTIVES AND ACTIVITIES

The relationship between the community of Rhondda Cynon Taf (RCT) in South Wales and the community of Mbale District in eastern Uganda was started in 2005 as an initiative of the charity Pontypridd Christian Concern (PCC). PCC created a subsidiary organisation "Pontypridd Overseas Networking Trust" to foster this partnership. From the outset the aim was to add our weight to the efforts of our partners to eradicate poverty in the region. Partnerships Overseas Networking Trust was created as a separate charity in 2008 to continue this work.

The objects of the trust are defined in section 4 of the trust deed as follows:-

The objects of the trust are to relieve sickness and financial hardship and to promote and preserve good health (both physical, spiritual and social) by the provision of funds, goods, services of any kind, including through the provision of counselling and support in such parts of Uganda or the world as the trustees from time to time may think fit particularly but not so as to limit the generality of the foregoing by means of the exchange of people, resources and ideas between the community of the County of Rhondda Cynon Taf in South East Wales and the community of Mbale, Bududa and Manafwa Districts of Eastern Uganda.

The Trustees have formulated the following Vision and Mission statements:

VISION:

To eliminate absolute poverty throughout the Mbale region of Uganda.

MISSION:

To encourage, empower and resource those helping people out of poverty in the Mbale region, Uganda through a network of personal and organisational relationships whilst learning from each other and enriching one another's lives.

The activities of PONT fall into 3 categories

1. Facilitating visits by individuals and committee representatives between our 2 communities.
2. Linking of institutions and professional groups.
3. Development and grant funding of projects which contribute to the charity's aims.

VISITS

VISITS TO MBALE AND UK

In previous years, visits from Mbale to the UK and vice versa took place regularly, helping to strengthen and deepen the partnership. Due to Covid no visits were possible in 2020/21. However, many video conference calls took place to enable the work to continue and relationships to be maintained.

LINKING

EDUCATION AND SCHOOLS

Over 100 Welsh schools have been linked with Partner Schools in Mbale including Schools catering for pupils with disabilities.

The main purpose of the partnerships is to create friendship links between schools and to:

- Extend pupils/staff's views of the world, embracing the concept of global citizenship.
- Enable pupils to learn about and respect one another's cultural differences by sharing of ideas and experiences.
- Enable intercultural dialogue, increased knowledge of one another's societies and enhance the schools' curriculums

LIVELIHOODS

The PONT project set up to provide support for orphans and other vulnerable children (OVC), currently being delivered through boosting the incomes (livelihoods) of poorer families. This is achieved by assisting with the formation of self-help groups to provide loans for payment of school fees and materials as well as start-up funds for various income generating activities. Goat rearing is another significant part of the scheme. This is an income generating activity which can easily be managed by most families whilst also producing numerous side benefits such as milk and manure. To date over 1,000 goats have been distributed to poor families, many of which look after orphaned children of their relatives in addition to their own children.

Training for the self-help groups and goat beneficiaries and associated dedicated goat supervisors is undertaken with the aim of producing long term sustainable change. 5 local NGOs are supported to run and monitor these activities in conjunction with the Mbale CAP Livelihoods Coordinator.

CHURCHES

The Pont church committee connects local church congregations in the Pontypridd area with congregations which are part of a Mbale Pont association of churches. This enables joint projects in welfare and mission as well as regular visits for church leaders and members in both directions.

WILDLIFE EDUCATION CENTRE

The Wildlife Education Centre has been constructed on a small parcel of land overlooking Mbale. This contains a collection of local animals which is used to educate the PONT schools in the importance of preserving local wildlife through interactive sessions and hands on experiences. All schools in the region are invited to bring along classes to the centre free of charge.

HEALTH

PONT-Mbale Health links aim to address Millennium Goals 4, 5 & 6 through training and mutual learning, and addressing specific challenges in access to health identified by our Mbale partners and their communities:

PRIMARY CARE

PONT Primary Care Committee links with Mbale CAP Health Committee supporting Community Health Worker development and partner capacity building. GPs and other health staff contribute to training through exchange visits.

PONT-Mbale Primary Health Care aims to improve community health and uptake of preventive government health services by:

- training volunteers, forming a network of community health workers in Village Health Teams
- safeguarding sustainability by retention of volunteers' commitment and skills through ongoing update training

SECONDARY HEALTH CARE

The Royal Glamorgan Hospital in RCT is linked with the Mbale Regional Referral Hospital (RRH). The link has been in existence since 2007. The linking committee includes staff from Radiology, Endoscopy, Midwifery and A&E.

PONT-Mbale Hospital team aims to support improved care and practice throughout hospital departments and disciplines of Mbale Regional Referral Hospital (MRRH) through:

- training and exchange visits
- service development

AMBULANCE

Ambulance staff volunteers from Wales Ambulance Service Trust (WAST) link with Mbale CAP Health committee and PONT PHC in delivering Emergency skills training and development of the Integrated Emergency Response Service

PONT Ambulance team aims to help save lives by:

- supporting volunteers training in lifesaving skills
- facilitating access to skilled health care through development of an integrated call-out transport service for maternity patients and people with emergency health needs

PROJECTS

In addition to being the catalyst for the creation of projects which result from school and church links, PONT develops and funds its own projects using the expertise and money available to it. We invite our community in Wales to donate to restricted funds that are created for each project. In addition PONT accesses grant funding for these projects. The trustees have delegated responsibility for selecting, developing and monitoring these projects to the relevant subject committee.

EDUCATION AND SCHOOLS



Due to the effect of COVID there have been limited activities this year. Members of the PONT Education team were unable to visit schools in Wales but kept in touch by phone, email, Zoom etc.

The Education Officers are currently evaluating all current partnerships and encouraging school coordinators to meet up with them via Zoom to discuss the way forward. Some such meetings have already taken place, Members of the PONT Education Committee have kept in touch with the team in Mbale via e mails, WhatsApp and Zoom and were even able to address a meeting of Head Teachers in Mbale.

One RCT School was awarded a PONT Flag and the presentation was made virtually before the flag was delivered to the school office.

Some Schools have been able to remain in contact with their partner school during the pandemic using WhatsApp and, in some cases, Zoom. Schools in Wales were not in a position to hold fund raising events but two sponsored events for PONT Education took place.

In June Phil & Kath (Education Officers) walked to 15 PONT school in 3 days raising over £1000. They continued walking and by Easter with the help of some school pupils covered the total distance from Pontypridd to Mbale raising again over £1000. Some of this was to be donated to some of the partner schools in Mbale.

A special Fund was set up to support Mbale School staff who were experiencing financial difficulty. Some were given support with food and hygiene supplies Mbale teachers received training on managing Covid restrictions in Schools and ways in which they could adjust to online learning and communication. PONT Schools in Mbale paid a big part in awareness raising among pupils on the seriousness of COVID19 with pupil to pupil awareness campaigns

British Council Uganda have kept in touch with Mbale PONT education team and thanks to their initiative PONT schools in Mbale had the chance to learn skills of mainstreaming climate change concepts in the curriculum via online courses. The Mbale PONT Examination Board produced sample examination papers to support pupils catch up and revision.



The Mbale Education Committee have met since COVID and made an action plan for next year. The main focus of the team in Mbale during the year was to implement a project “There is always Ability in Disability”. A grant was received from the St James Place Charitable Foundation to help fund this.



A Special Needs Project Committee has been set up to oversee this. The Committee drew up a work plan as well as a budget and held meetings. The Committee started the search for beneficiaries using information from Head teachers and local government education officials. The Committee looked at the collected data and selected the beneficiaries. The Chairperson implemented the placement exercise. The Committee plan to carry out training and also give out a few goats to the neediest cases. The Chairperson gives brief communication of activities to PONT Education by WhatsApp.

Covid-19 made the beginning very hard. However when candidate classes of P7, S4 and S6 were allowed to resume in February 2021, the following pupils were enrolled

NO	DISTRICT	SKILLS	VOC	P7	S4	S6	TOTAL
1.	BUDUDA	06	02	05	00	00	013
2.	MBALE	03	07	02	01	00	013
3.	NAMISINDWA	-	-	02	02	00	004
	TOTAL	09	09	09	03	00	030 out of 50

School/ Vocational Training fees were paid, some special equipment for vocational courses was provided and for some the necessary aids for them to attend educational/training establishments. As younger pupils return to school more will be enrolled and as COVID restrictions are lifted, awareness training will take place for Community Health workers teachers and carers.

LIVELIHOODS



During the year the UK based Livelihoods sub-group continued working with the Mbale Livelihoods group to bring help to the rural communities in the region around Mbale. However, the work was drastically impacted by the Covid-19 pandemic that affected most of the world during this period. Very little of the programmed works were able to be carried out by the MCAP partners.

The Mbale CAP team did manage to deliver two projects and both involved providing emergency help to people in the self-help groups that have been established through the Livelihoods work in recent years.

1. PONT Funded Emergency Relief
Early on in the pandemic the PONT Livelihoods team sent out funds to enable MCAP to take some basic emergency help out to struggling families in the area. 200 families were helped and all beneficiaries greatly appreciated what they received.
2. Welsh Government through WCVA Funded Emergency Relief
We were successful in applying for a grant from Welsh Government via WCVA to provide further emergency relief during the pandemic. This consisted of:
 - 2.1. Simple training about the nature of Covid-19 and how to prevent its spread within the communities. This was given to over 1,200 families.
 - 2.2. Provision of packages of basic food to families that were identified as being in particular need. 300 families were helped in this way.
 - 2.3. Provision of small amounts of cash as seed funding to help get the savings groups functioning again after the pandemic. 40 groups received this help.

Our thanks go to the MCAP Livelihoods team for their dedication and hard work in delivering both projects.

CHURCHES

Due to Covid, the planned church team visit for this year had to be cancelled. To help our partner churches deal with the hardships in their communities caused by Covid and the resulting lock down, several churches held additional fund raising appeals. This funding was well received and used by the churches in Mbale.



HEALTH



A decision was made by PONT UK during this year to combine the 3 existing health committees of Primary Care, Secondary Care and Ambulances. This has made both the oversight and the finances of the 3 committees easier to manage. The head of the new Health Committee in the UK is Dr Geoff Lloyd.

Because of COVID there were no visits from the UK to Uganda in this time period.

PRIMARY HEALTH CARE

The team of voluntary health workers in Uganda continue to work harder than ever due to Covid. They are managed by our 8 partner NGOs within Mbale. We send funds every quarter to support this network. To help them prepare and deal with Covid a major fund raising effort was made by PONT UK which was used to provide additional training to our health workers in the prevention and early detection of COVID.

SECONDARY HEALTH CARE

We continued to support our PONT contact in Mbale Regional Care Hospital, Dr Adam Hewitt Smith, a consultant anaesthetist

MOTORBIKE AMBULANCES

These were busier than ever due to Covid. We therefore held a major fund raising effort to repair several Motorbike Ambulances This resulted in a general increase in transfers.

WILDLIFE EDUCATION CENTRE

Although visitor numbers during this year were well down due to the lockdown in Uganda, we continued to look after the animals and develop the site. Additional new animals this year included two new crocodiles, two new Pythons, a Crested Crane, and two new guard dogs.

Two houses were built to house workers families on site.

For 3 months we had the privilege of a gap year veterinary student from the UK working at the site, helping to develop the care of the animals.



ENGINEERING

During the period the group worked on various projects, the key ones of which are detailed below. The usual two-week visit to Mbale had to be cancelled due to the Covid-19 pandemic. Using email and video conferencing within the UK, and between the UK and Mbale, the work of the engineering team has continued throughout the year, though inevitably with less progress being made.

90 recorded hours of skilled professional time was contributed free of charge for the purposes of the group. A number of hours of unrecorded time were also given. This is notably reduced compared to previous years, due primarily to there being no visit to Mbale, and also general reduced activity due to Covid restrictions.



1. MECHANICAL ENGINEERING WORKSHOP IGA PROJECT

This is a mechanical engineering workshop that was set up utilising redundant machines donated and shipped to Mbale. The machines are owned by Mbale-PONT, with a separate company (PONT Uganda Ltd.), set up as a social enterprise, operating the facility utilising the machines. This is providing vocational training as well as operating as a business. It is intended that profits will augment the funds available to Mbale-PONT for poverty alleviation projects once the business is sustainable.

During the reporting period:

The business side of the workshop struggled during the year due to lockdowns preventing business, and the resulting downturn in the local economy, with customers having less money to spend. The business is actively marketing its products and services via social media. The training side of the workshop operation has been suspended due to restrictions on educational activities, and potential students' lack of funds.

The usual regular contact has been maintained via electronic means, with the addition of some meetings via videoconferencing, which have been effective, and may well continue post Covid. A new accounting system has been set up to help improve analysis of the business operation.

2. MOONI WATER PROJECT

Work has continued on specifying additions to the water supply system in Mooni, with a view to the possibility of PONT funding this project. Progress has been slowed by the lack of a visit.

3. MICRO HYDRO ELECTRICITY GENERATION

This system is still out of commission, as the visit to effect repairs was not able to take place. It is hoped that it will be possible to bring the system back into operation during the next visit, and to implement the planned locally based maintenance support regime.

4. SOLAR POWER

Progress with solar power projects has stalled, primarily due to the inability to visit. The system for the primary school at Bumatofu, that was visited and surveyed in 2019, has not commenced installation. This is partly due to being unable to visit, and also due to UK Covid restrictions meaning the partner school hasn't raised any funds towards the project.

The trustees confirm that they have referred to the guidance contained in the Charity Commission's general guidance on public benefit when reviewing the Trust's aims and objectives and in planning future activities.

SECTION D: RESERVES POLICY

The PONT trustees have adopted the following reserves policy

General Fund

The annual budgets for the General Fund include the following expenditure

1. the core costs of the charity
2. the grants given to cover the core costs of Mbale PONT.

The General Fund will hold sufficient assets to cover between 6 and 9 months of these expenditures.

Designated Funds

The PONT Management Team may from time to time designate funds to be used by a committee to cover future project expenditure. Such funds must be spent within 12 months of their designation unless a longer period has been specifically authorised by the trustees.

SECTION E: DECLARATION

STATEMENT OF TRUSTEES RESPONSIBILITIES

The trustees are responsible for preparing the Report of the Trustees and the financial statements in accordance with applicable law and United Kingdom Generally Accepted Accounting Practice.

The law applicable to charities in England and Wales, the Charities Act 1993, Charity (Accounts and Reports) Regulations 2008 and the provisions of the trust deed requires the trustees to prepare financial statements for each financial year which give a true and fair view of the state of affairs of the charity and of the incoming resources and application of resources, including the income and expenditure, of the charity for that period. In preparing those financial statements, the trustees are required to

- select suitable accounting policies and then apply them consistently;
- observe the methods and principles in the Charity SORP;
- make judgements and estimates that are reasonable and prudent;
- prepare the financial statements on the going concern basis unless it is inappropriate to presume that the charity will continue in business

The trustees are responsible for keeping proper accounting records which disclose with reasonable accuracy at any time the financial position of the charity and to enable them to ensure that the financial statements comply with the Charities Act 1993, the Charity (Accounts and Reports) Regulations 2008 and the provisions of the trust deed. They are also responsible for safeguarding the assets of the charity and hence for taking reasonable steps for the prevention and detection of fraud and other irregularities.

The trustees declare that they have approved the trustees' report above.

Signed on behalf of the trustees on by:

Kathryn Rickards

Trustee

Geoff Lloyd

Coordinator

**Report of The Trustees And
Unaudited Financial Statements
For the Year
Ended 31 March 2021
For
Partnership Overseas Networking Trust CIO**

	Page
Report of the trustees	1-6
Independent Examiners Report	7
Statement of Financial Activities	8
Balance Sheet	9
Notes to the Financial Statements	10-19

PARTNERSHIP OVERSEAS NETWORKING TRUST CIO

REPORT OF THE TRUSTEES

FOR THE YEAR ENDED 31 MARCH 2021

The trustees present their report with the financial statements of the charity for the year ended 31 March 2021. The trustees have adopted the provisions of Accounting and Reporting by Charities: Statement of Recommended Practice applicable to charities preparing their accounts in accordance with the Financial Reporting Standard applicable in the UK and Republic of Ireland (FRS 102) (effective 1 January 2015).

OBJECTIVES AND ACTIVITIES

Objectives and Aims

The relationship between the community of Rhondda Cynon Taff in South Wales and the community of Mbale District in eastern Uganda was started in 2005 as an initiative of the charity Pontypridd Christian Concern (PCC). PCC created a subsidiary organisation "Pontypridd Overseas Networking Trust" to foster this partnership. From the outset the aim was to add our weight to the efforts of our partners to eradicate poverty in the region.

The Partnerships Overseas Networking Trust CIO (Charity number 1166910) commenced its activities with effect from 1 January 2018, taking over the activities and assets from an unincorporated charity, Partnerships Overseas Networking Trust (Charity number 1125948). The charity was incorporated on the 1st of January 2018 and is governed by its trustees in accordance with its constitution dated 13th of October 2015.

The objects of the trust as defined in section 4 of the trust deed as follows:-

The objects of the trust are to relieve sickness and financial hardship and to promote and preserve good health (both physical, spiritual and social) by the provision of funds, goods, services of any kind, including through the provision of counselling and support in such parts of Uganda or the world as the trustees from time to time may think fit particularly but not so as to limit the generality of the foregoing by means of the exchange of people, resources and ideas between the community of the County of Rhondda Cynon Taff in South East Wales and the community of Mbale, Bududa and Manafwa Districts of Eastern Uganda.

The Trustees have formulated the following Vision and Mission Statements

Vision:

To eliminate absolute poverty throughout the Mbale region of Uganda. Mission:

To encourage, empower and resource those helping people out of poverty in the Mbale region, Uganda through a network of personal and organisational relationships whilst learning from each other and enriching one another's lives.

The activities of PONT fall into 3 categories

1. Facilitating visits by individuals and committee representatives between our 2 communities.
2. Linking of institutions and professional groups.
3. Development and grant funding of projects which contribute to the charity's aims.

The following section describe each of these in turn.

FINANCIAL REVIEW

Reserves Policy

The PONT trustees have adopted the following reserves policy

General Fund

The annual budgets for the General Fund include the following expenditure

1. the core costs of the charity
2. the grants given to cover the core costs of Mbale PONT.

The General Fund will hold sufficient assets to cover between 6 and 9 months of these expenditures.

At the end of the financial year the level of reserves was £129,429. However, the available funds after excluding fixed assets and restricted funds is £32,162.

Designated Fund

The PONT Steering Group may from time-to-time designate funds to be used by a committee to cover future project expenditure. Such funds must be spent within 12 months of their designation unless a longer period has been specifically authorised by the trustees.

STRUCTURE, GOVERNANCE AND MANAGEMENT

Governing Document

The Partnership Overseas Networking Trust is a registered Charitable Incorporated Organisation, number 1166910.

The Partnerships Overseas Networking Trust CIO (Charity number 1166910) commenced its activities with effect from 1 January 2018, taking over the activities and assets from an unincorporated charity, Partnerships Overseas Networking Trust (Charity number 1125948).

Recruitment and Appointment of New Trustees

New trustees are appointed by existing trustees; there is no fixed term of service for a trustee. The trust deed requires that there shall be at least 3 trustees.

STRUCTURE, GOVERNANCE AND MANAGEMENT

Organisational Structure

The trustees meet at least twice a year and agree policies and regulations to be used by the trust and its committees. They also perform strategic planning. All trustees give their time freely and no trustee remuneration was paid in the year. Dr Geoff Lloyd serves as chairman of the trustees.

The trustees have appointed a steering group and several committees to oversee the projects, grants and activities of the trust. Each committee is required to fully report its activities and proceedings to the trustees within 2 months. It shall conform to any regulations and policies imposed on it by the trustees.

Dr Geoff Lloyd is the chair of the Steering Group and Marga Quince serves as minutes secretary.

The following committees have been adopted.

Name	Area of Operation	Chair
Primary Health	Improvement of Health at community level	Dr Geoff Lloyd
Secondary Health	Linking Hospitals	Dr Geoff Lloyd
Education	Schools, supporting teachers and teaching through sharing of expertise, awareness raising	Philip Rickards
Livelihoods	Relief and Prevention of Poverty amongst children	Geoff Medlow / Jayne Brencher (joint chairs)
PONT Engineering	Engineering and Business Projects to assist communities	Howard Smith
Churches	Overseeing links between Rhondda Cynon Taff (RCT) and Mbale churches and delivering holistic mission.	Rev Peter Lewis
Environment	Promotion of sustainable living and prevention of environmental degradation.	Marga Quince
Wildlife Education Centre	Educational resource for the local schools	Dr Geoff Lloyd
Ambulance	Ambulance Response Service provision	Julian Newton
University	Mobilising the resources of Tertiary Educational Institutions	Marga Quince
Finance	Propose financial procedures and regulations to trustees. Oversee the charity's accounts.	Geoff Herbert

The majority of these committees maintain a relationship with an equivalent committee in Mbale, Uganda. They have delegated responsibility for the allocation of one or more restricted or designated funds. They arrange for monitoring and evaluation of any projects that they funds.

An executive committee has been created to undertake agreed functions with the consent of the trustees, it meets weekly. The steering group meets monthly and therefore unable to effectively discharge some of the tasks which need more regular attention. As a consequence the following functions were transferred to the weekly executive committee meeting:

Management of paid staff and contractors in UK;

The preparation of bids to UK and international donors with or on behalf of PONT committees;

The development of policy documents;

The development of administrative functions;

STRUCTURE, GOVERNANCE AND MANAGEMENT

Organisational Structure

Co-ordination with PONT Mbale regarding staffing, funding issues and the development of procedures.

The executive committee is chaired by Dr. Geoff Lloyd, PONT co-ordinator, and includes the chair of the steering committee and the treasurer (all ex officio). It invites others to attend from time to time for agreed purposes.

Wider Network

PONT works in partnership with a number of local organisations in Mbale, Uganda to pursue its objectives. To coordinate the work that we do with NGO partners we asked them to create an umbrella organisation Mbale-PONT which is governed by a board which has representatives from each of the member NGOs. The majority of the running costs of Mbale PONT are met by a grant from PONT UK. PONT has also encouraged the creation of a wider body in Mbale - the Mbale Coalition Against Poverty (Mbale-CAP). In addition to the NGO partners that make up Mbale-PONT this body includes representatives from the district governments of Mbale, Manafwa and Bududa. Mbale CAP has created a number of committees to plan and run projects. PONT provides grants to fund some of these projects. Mbale-CAP has also been able to secure funding from other organisations.

PONT is the sole owner of the company PONT Commercial Services Ltd (PONT CS), which carries on trading activities for the benefit of the charity. The subsidiary donates its taxable profits to the Charity each year by gift aid. PONT CS has 1 director: Keith Lewis.

Bank Lloyds TSB, Market Square, Pontypridd

REFERENCE AND ADMINISTRATIVE DETAILS

Registered Charity number

1166910

Principal address

Cartref
Pencerrig Street
Graigwen
Pontypridd
CF37 2HS

Trustees

Dr Geoff Lloyd MRCP MRCGP, Coordinator (Chairman of Trustees)
Geoff Herbert RIBA, Treasurer
John Phillips LLB
Kathryn Rickards BSc
Howard Smith CEng MIET
Julian Martyn Newton
Cllr Jayne Brencher
Marga Quince
Richard Griffiths

Independent Financial Examiner

LA Silver
1 Eastcote Road
Tiffield
Towcester
Northamptonshire
NN12 8AS

Approved by order of the board of trustees on 24/01/2021 and signed on its behalf by:

.....

Mr G Herbert RIBA – Trustee

INDEPENDENT EXAMINER'S REPORT ON THE ACCOUNTS

Accruals Accounts

Report to the trustees of Partnership Overseas Networking Trust

Registered Charity number 1166910

On the accounts for the year ended 31 March 2021

Set out on the following pages

Respective responsibilities of trustees and examiner

The charity's trustees are responsible for the preparation of the accounts. The charity's trustees consider that an audit is not required for this year (under section 144(2) of the Charities Act 2011 (the 2011 Act) and that an independent examination is needed.

It is my responsibility to:

- Examine the accounts (under section 145 of the 2022 Act;
- To follow the procedures laid down in the General Directions given by the Charity Commission (under section 145(5)(b) of the 2011 Act; and
- State whether particular matters have come to my attention.

Basis of independent examiner's report

My examination was carried out in accordance with the General Directions given by the Charity Commissioners. An examination includes a review of the accounting records kept by the charity and a comparison of the accounts presented with those records. It also includes consideration of any unusual items or disclosures in the accounts, and seeking explanations from you as trustees concerning any such matters. The procedures undertaken do not provide all the evidence that would be required in an audit, and consequently no opinion is given as to whether the accounts a 'true and fair view' and the report is limited to those matters set out in the statement below.

Independent examiner's statement

In connection with my examination, no matter has come to my attention:

- (1) which gives me reasonable cause to believe that in any material respect the requirements
 - to keep accounting records in accordance with section 130 of the 2011 Act; and
 - to prepare accounts which accord with the accounting records and comply with the accounting requirements of the 2011 Act

have not been met: or

- (2) to which, in my opinion, attention should be drawn in order to enable a proper understanding of the accounts to be reached.

Signed *L A Silver*

Date: 5 January 2022

Luke Silver HNC Business & Finance
Accountancy Practitioner

12 Oliver Street, Pontypridd, Mid Glamorgan. CF37 2RD

Partnerships Overseas Networking Trust

Statment of Financial Activities
For the Period 1 April 2020 to 31 March 2021

		Unrestricted funds	Restricted funds	Year Ended 31.03.21 Total funds	Year Ended 31.03.20 Total funds
	Notes	£	£	£	
Incoming Resources					
Voluntary income	2	27,690	138,792	166,482	166,430
Investment income		272		272	-
Activities for generating funds	3	-	340	340	670
Total incoming resources		<u>27,962</u>	<u>139,132</u>	<u>167,094</u>	<u>167,100</u>
Resources Expended					
Cost of generating funds					
Fundraising costs	4	-	-	-	3,265
Charitable activities					
Charitable activities	5	17,500	105,735	123,235	194,410
Governance costs	7	400	-	400	400
		<u>17,900</u>	<u>105,735</u>	<u>123,635</u>	<u>198,075</u>
Net Incoming Resources		<u>10,062</u>	<u>33,397</u>	<u>43,459</u>	<u>-</u>
		<u>-</u>	<u>9,677</u>	<u>-</u>	<u>-</u>
		385	43,074	43,459	-
					30,975
RECONCILIATION OF FUNDS					
Total funds brought forward		31,777	54,193	85,970	116,945
Total funds carried forward		<u>32,162</u>	<u>97,267</u>	<u>129,429</u>	<u>85,970</u>

Partnerships Overseas Networking Trust

Balance Sheet
As at 31 March 2021

Year Ended 31.03.19 Total funds	Notes	Unrestricted funds £	Restricted funds £	Year Ended 31.03.20 Total funds £
Fixed Assets				
	11	-	-	-
		-	-	-
Current Assets				
Debtors	12	12,775	27,557	40,332
Cash at bank		29,038	69,692	98,730
		41,813	97,249	139,062
Current Liabilities				
Creditors: amounts falling due within one year	13	(9,650)	18	(9,632)
Net Current Assets		32,163	97,267	129,430
Net Assets		32,163	97,267	129,430
Funds	15			
Unrestricted funds				32,162
Restricted funds				97,267
				129,429

Partnerships Overseas Networking Trust

Notes to the Financial Statements
For the Period 1 April 2020 to 31 March 2021

Year Accounting Policies

Basis of preparing the financial statements

No material uncertainties that may cast significant doubt the ability of the charity to continue as a going concern have been identified by the trustees.

Therefore the financial statements have been prepared on a going concern basis.

Accounting convention

The financial statements have been prepared under the historic cost convention, and in accordance with the Financial Reporting Standard for Smaller Entities (effective April 2008), the Charities Act 1993 and the requirements of the Statement of Recommended Practice, Accounting and Reporting by Charities.

Exemption from preparing a cash flow statement

Exemption has been taken from preparing a cash flow statement on the grounds that the charity qualifies as a small charity.

Incoming resources

All incoming resources are included on the Statement of Financial Activities when the charity is legally entitled to the income and the amount can be quantified with reasonable accuracy.

Resources expended

Expenditure is accounted for on an accruals basis and has been classified under headings that aggregate all cost related to the category. Where costs cannot be directly attributed to particular headings they have been allocated to activities on a basis consistent with the use of resources.

Cost of generating funds

Costs of generating funds comprise those costs directly attributable to raising funds through activities.

Other Fixed assets

The trustees has determined to depreciate the cost of equipment at 25% of cost per annum.

Governance costs

Governance costs include direct and related support costs relating to the governance infrastructure allowing the charity to generate information required for public accountability.

Taxation

The charity is exempt from tax on its charitable activities.

Fund accounting

Unrestricted funds can be used in accordance with the charitable objectives at the discretion of the trustees.

Restricted funds can only be used for particular restricted purposes within the objects of the charity. Restrictions arise when specified by the donor or when funds are raised for particular restricted purposes.

Further explanation of the nature and purpose of each fund is included in the notes to the financial statements.

Partnerships Overseas Networking Trust

Notes to the Financial Statements - continued
For the Period 1 April 2020 to 31 March 2021

	Year Ended 31.03.21 £	Year Ended 31.03.20 £
2. Voluntary Income		
Gifts and donations	124,292	139,103
Bequests & Legacies	-	-
Gift aid	20,138	21,823
Grants	22,052	5,504
	<u>166,482</u>	<u>135,677</u>

Grants received, included in the above, are as follows:

	Year Ended 31.03.21 £	Year Ended 31.03.20 £
Welsh Assembly Government	-	-
THET PIP	7,880	-
Global Poverty Action Fund (DFID)	4,172	-
Good Gifts	10,000	-
Other	-	5,504
	<u>22,052</u>	<u>4,000</u>

	Year Ended 31.03.21 £	Year Ended 31.03.20 £
3. Activities for Generating Funds		
Fundraising events	340	670

	Year Ended 31.03.21	Year Ended 31.03.20
4. Investment Income		
Interest	272	-
Dividend Payments	-	-
Loan Interest	-	-
	<u>272</u>	<u>4,848</u>

	Year Ended 31.03.21 £	Year Ended 31.03.20 £
5. Fundraising Costs		
	-	3,265

Partnerships Overseas Networking Trust

6. Direct Costs of Charitable Activities	Direct Costs (see note 6) £	Grant funding activity	Year Ended 31.03.21	Year Ended 31.03.20
			Totals £	Totals £
Charitable activities	7,554	115,681	123,235	194,410
Grants and program expenditure			£ 115,681	£ 148,189
Travel expenses			-	36,988
Donations made			-	-
Professional fees (moved from governance costs)			4,378	7,938
Core Support Costs			4,378	6,018
Admin support			-	-
Promotional costs			-	-
Printing/photocopying			20	-
Insurance			1,256	2,320
other premise costs			-	82
website			120	1,000
accounting and audit			1,650	-
other fees			-	1,080
Bank Charges (moved from governance costs)			130	94
Core Overhead Costs			3,176	3,215
			<u>123,235.00</u>	<u>194,410.00</u>
7. Grants Payable			Year Ended 31.03.21	Year Ended 31.03.20
			Totals £	Totals £
General activities			115,681.00	148,189.00

Partnerships Overseas Networking Trust

Notes to the Financial Statements - continued
For the Period 1 April 2020 to 31 March 2021

Analysis of Grants and Program Expenditure by Expenditure Code	Year Ended		Year Ended	
	31.03.21		31.03.20	
	£		£	
Grants to individuals	3,230		-	
Grants to NGO's	41,932		52,783	
Direct Program Expenditure	70,519		95,176	
	115,681		148,189	

Analysis of Grants and Program Expenditure by Activity	Year Ended		Year Ended	
	31.03.21		31.03.20	
	£		£	
	Total		Total	
<i>General Activities</i>				
Mbale Visitors Centre	-	39,015	-	52,561
cholera appeal	-	6,777	-	-
NGO Support	-	12,713	-	12,008
Covid Training	-	-	-	5,116
Landslide Projects	-	3,230	-	-
<i>Education Activities</i>				
School Link Funding	-	-	-	-
Education General	-	2,485	-	9,395
Education Covid Appeal	-	1,841	-	-
School Disability Project	-	5,000	-	-
<i>ATEB Links</i>				
ATEB Grant	-	-	-	1,827
Workshop	-	2,439	-	994
<i>Churches</i>				
Bulatse Catholic Church	-	-	-	2,656
First Baptist Church	-	4,600	-	3,000
Mooni Girls of Hope	-	1,400	-	1,376
Kaminkilo Community Proj	-	1,167	-	1,608
Hope Ministries Namatala	-	1,260	-	-
<i>Orphan Supprt</i>				
Goats Project	-	11,811	-	8,654
<i>Health Care Projects</i>				
AMB - Bikes	-	12,337	-	20,828
PHC - General	-	9,375	-	16,666
SHC - Projects	-	-	-	9,844
<i>Expenditure under £2k</i>				
other activities	-	230	-	1,656
Total	-	115,680	-	148,189

8. Governance Costs	Year Ended		Year Ended	
	31.03.21		31.03.20	
	£		£	
	400		400	

9. Trustee's Remuneration and Benefits

The trustees provide their services on a voluntary basis therefore there was no trustee's remuneration or other benefits for the priod ended 31 March 2021.

Trustees' Expenses

There were no staff costs for the period ended 31 March 2021.

Partnerships Overseas Networking Trust

Notes to the Financial Statements - continued
For the Period 1 April 2020 to 31 March 2021

10. **Staff Costs**

There were no staff costs for the year ended 31 March 2020 nor for the year ended 31 March 2021

No employees received emoluments in excess of £60,000.

Notes to the Financial Statements - continued
For the Period 1 April 2020 to 31 March 2021

Partnerships Overseas Networking Trust

			Year Ended 31.03.21 £	Year Ended 31.03.20 £
12. Debtors: Amounts falling Due within one Year				
Recoverable Gift Aid				
Just Giving				
CAF				
Mbale Uganda				
Other Debtors			<u>40,331</u>	55,653
13. Creditors: Amounts falling Due within one Year				
Other creditors			382	6,041
Deferred Grant Income			9,250	38,000
			-	-
Loans repayable			-	-
			<u>9,632</u>	<u>400</u>
14. Analysis of Net Assets Between Funds				
	Unrestricted funds £	Restricted funds £	Year Ended 31.03.21 £	Year Ended 31.03.20 £
Fixed assets	1.00	-	1.00	1.00
Investments	-	-	-	-
Current Assets	41,812.00	97,249.00	139,061.00	86,369.00
Current Liabilities	- 9,650.00	18.00	- 9,632.00	- 400.00
	<u>32,163.00</u>	<u>97,267.00</u>	<u>129,430.00</u>	<u>85,970.00</u>

Partnerships Overseas Networking Trust

Notes to the Financial Statements - continued
For the Period 1 April 2020 to 31 March 2021

15. Movement in Funds	At 31.03.20 £	Net movement in funds £	Transfers between funds £	At 31.03.21 £
Unrestricted Funds				
General fund	14,248	8,383	- 9,677	12,954
Designated fund	17,529	1,679	-	19,208
	<u>31,777</u>	<u>10,062</u>	<u>- 9,677</u>	<u>32,162</u>
Restricted funds				
Ambulance	431	-	- 433	- 2
Carbon	10	-	-	10
Churches	8,247	- 990	-	7,257
Disaster Relief	-	-	-	-
Education	2,105	5,285	-	7,390
Engineering	4,475	281	-	4,756
Environmental	1,906	-	-	1,906
Health	1,438	6,930	21,810	30,178
Wildlife Education Centre	3,265	31,035	-	34,300
Livelihoods	8,668	1,518	-	10,186
Relief of Poverty	20	- 10,662	10,650	8
University	1,278	-	-	1,278
Primary Health	20,842	-	- 20,842	-
Secondary Health	1,508	-	- 1,508	-
	<u>54,193</u>	<u>33,397</u>	<u>9,677</u>	<u>97,267</u>
Total Funds	<u>85,970</u>	<u>43,459</u>	<u>-</u>	<u>129,429</u>

Partnerships Overseas Networking Trust

Notes to the Financial Statements - continued
For the Period 1 April 2020 to 31 March 2021

15. Movement in Funds - continued	Incoming resources		Resources expended		Transfer between funds		Transfer to New Charity		Movement in funds	
	£		£		£		£		£	
Unrestricted Funds										
General fund	26,283	-	17,900	-	9,677	-	-	-	1,294	
Designated fund	1,679	-	-	-	-	-	-	-	1,679	
	<u>27,962</u>	-	<u>17,900</u>	-	<u>9,677</u>	-	-	-	<u>385</u>	
Restricted funds										
Ambulance	-	-	-	-	433	-	-	-	433	
Carbon	-	-	-	-	-	-	-	-	-	
Churches	7,499	-	8,489	-	-	-	-	-	990	
Disaster Relief	-	-	-	-	-	-	-	-	-	
Education	14,811	-	9,526	-	-	-	-	-	5,285	
ATEB	2,720	-	2,439	-	-	-	-	-	281	
Environmental	-	-	-	-	-	-	-	-	-	
Health	28,656	-	21,726	-	21,810	-	-	-	28,740	
Mbale Visitors Centre	70,050	-	39,015	-	-	-	-	-	31,035	
orphan	13,346	-	11,828	-	-	-	-	-	1,518	
Relief of Poverty	2,051	-	12,713	-	10,650	-	-	-	12	
University	-	-	-	-	-	-	-	-	-	
Medical	-	-	-	-	20,842	-	-	-	20,842	
Hospital Links	-	-	-	-	1,508	-	-	-	1,508	
	<u>139,133</u>	-	<u>105,736</u>	-	<u>9,677</u>	-	-	-	<u>43,074</u>	
Total Funds	<u>167,095</u>	-	<u>123,636</u>	-	<u>-</u>	-	-	-	<u>43,459</u>	

**Movement in Funds -
15. continued**

Primary Health	Funds for Support of Primary Health Care This relates to initial and ongoing training of community health workers, surveys, collection and sharing of data, project planning and associated expenditure.
Livelihoods	Funds for use in the Livelihoods and Vulnerable Children Project (OVC) This relates to the provision of goat(s) to families chosen to be part of the project, including the purchase, treatment, transport, training, support and monitoring of this project and associated expenditure.
Health	Funds for support of Primary and Secondary Health Care This relates to initial and ongoing training of community health workers, surveys, collection and sharing of data, project planning, equipment, travel, operation, feasibility studies, monitoring and associated expenditure.
Education	Funds for use in the twinning of schools in Wales and Uganda This includes training, communications, projects, visits, development of curricula, resources, mutual support and associated expenditure.
Churches	Funds for use in the twinning of churches in Wales and Uganda This includes training, communications, projects, visits, development of communities, resources, mutual support and associated expenditure.
Carbon Offset	Funds for use in setting up and running Carbon Offsetting projects This includes projects, visits, resources, support and associated expenditure.
ATEB	Funds for use in Environmental Technology, Engineering and Business Development projects This relates to agreed engineering and business projects, including feasibility, design, costing and implementation of such projects together with training, monitoring communications, visits and associated expenditure.
Environment	Funds for use in connection with Environmental projects This relates to agreed Environmental projects, including feasibility, design, costing and implementation of such projects together with training, monitoring communications, visits and associated expenditure.
Ambulance Project	Funds for the establishment of an Ambulance Service Funds for the establishment of an Ambulance type provision for patient transport of various kinds (such as cycle/motorcycle/motorised ambulance) including training, operation, communications, equipment, monitoring and associated expenditure.
Secondary Health	Funds for development of Hospital Links between Wales and Uganda This includes the provision of equipment, training, travel, operation, feasibility studies, monitoring and associated expenditure.
Disaster Relief	Funds for responding to disaster situations in Uganda Funds for responding to mudslide disaster in partnership with our local partners - ongoing response based upon monitoring of needs; feedback provided by local responses and assessments made during other visits.
Partner Support	Funds donated for specific support to ngo's and individuals Funds donated for specific support for ngo's and individuals, including training, community work and health needs.
Education Fund	Grant aided funds for implementation of Education This includes projects, visits, resources, support and associated expenditure.

Community Health	Funds for implementation of specific pre-identified projects Funds received from fund raising bodies following applications to specific projects relating to community health within the charity's overall remit [e/g Good Gifts].
Relief of Poverty	Funds for use in connection with the Relief of Poverty in Uganda This includes provision of funds to our local partners in connection with agreed projects to offset the effects of poverty, including the practical work undertaken and the monitoring and administration of such projects.
Mooni Conference Centre	Funds for use in connection with the creation of a Training and Conference centre This follows suggestions from Mbale, initially for an eco-centre to be followed by development of a visitor, training and conference facilities
Wildlife Education Centre	Educational resources for local schools
University	Funds for use in connection with projects led by the University of South Wales.

16. RELATED PARTY DISCLOSURESUnincorporated charity, Partnerships Overseas Networking Trust (Charity number 1125948).

The Partnerships Overseas Networking Trust CIO (Charity number 1166910) commenced its activities with effect from 1 January 2018, taking over the activities and assets from an