



For when a child dies or is bereaved

Trustees Report and Accounts

Year Ended 31 March 2021

Regional Office
Registered Office

The Laura Centre
4-6 Tower Street
Leicester LE1 6WS

Charitable Incorporated Organisation (CIO) Number 1166803

The Rowleys Partnership Ltd; Chartered Accountants
Charnwood House, Harcourt Way, Meridian Business Park, Leicester LE19 1WP

THE LAURA CENTRE CIO
ACCOUNTS FOR THE YEAR ENDED
31 MARCH 2021

CONTENTS

	Page
Reference and administrative details	1
Trustees' report	2 - 8
Independent Examiners' report	9
Statement of financial activities	10
Comparative Statement of financial activities	11
Balance sheet	12
Notes to the accounts	13 - 21

THE LAURA CENTRE CIO

TRUST INFORMATION

Trustees	H Moore FMS, AIIIE (Chair) E Breslin S Leggott J Delve F Clarke J White D I Sutherland A Leask A Keenan (appointed July 2021)
Chief Executive Officer	S Binning
Charity Number	1166803
Governing Document	Constitution dated 28 April 2016
Registered Address	Laura Centre 4-6 Tower Street Leicester LE1 6WS
Independent Examiners	The Rowleys Partnership Ltd Chartered Accountants Charnwood House Harcourt Way Meridian Business Park Leicester LE19 1WP
Bankers	CAF Bank Limited Kings Hill West Malling Kent ME19 4JQ Barclays Bank Plc Town Hall Square Leicester LE1 9AA

THE LAURA CENTRE CIO

TRUSTEES REPORT

The Trustees present their annual report with the financial statements of the charity for the year ended 31 March 2021. The trustees have adopted the provisions of Accounting and Reporting by Charities: Statement of Recommended Practice applicable to charities preparing their accounts in accordance with the Financial Reporting Standards applicable in the UK and Republic of Ireland (FRS 102) (effective 1 January 2019).

The financial statements have been prepared in accordance with the accounting policies set out in the notes to the accounts and comply with the charity's governing document, the Charities Act 2011 and Accounting and Reporting by Charities: Statement of Recommended Practice applicable to charities preparing their accounts in accordance with the Financial Reporting Standard applicable in the UK and Republic of Ireland published in October 2019.

The trustees listed on page 1 have served as trustees since 1 April 2019.

Introduction - The Laura Centre History

The Laura Centre, affectionately known as TLC, was founded by two bereaved parents, Gail and Harry Moore following the death of their daughter, Laura, aged 5, from Leukaemia in 1989. At that time, they sought to address the total lack of support, facilities and resources for bereaved parents affected by the death of a child and children and young people affected by the death of a parent/sibling, which the family were facing first hand. They brought together a working party of invited individuals including clinicians dealing with death and dying; psychologists; psychotherapists and other bereaved parents, their aim being: to develop a working brief to create a dedicated specialist bereavement Centre for when a child dies or is bereaved.

The Moore's went on to launch a focused awareness and fundraising campaign, with the help of the local media. The Laura Centre opened its doors in 1991 and since this time has supported many thousands of bereaved families. Every year TLC sees over 650 individuals referred to the Centre for the very first time. This gives you a flavour of the scale of this vital service and how our clinical interventions improve life chances by strengthening bereaved families, positively, practically, for life.

The model the Moore's created, engenders firm foundations, continuity of care and service delivery, together with the ethos of shared consultation within the community TLC serves, remains today with our beneficiaries being at the heart of all we do. TLC is a well-established charity and recognised nationally for its cutting edge approach and clinical excellence in the field of family bereavement. This model underpins the charity's growth and development, in a managed and phased way, across the geographical area we now serve.

The vision of The Laura Centre is to create a culture of compassion for bereaved families.

The Laura Centre is seen as the preferred provider, within our geographical reach, of highly specialist bereavement counselling and therapeutic support. Our work is recognised nationally for its clinical excellence in the field of traumatic grief, anticipatory grief work and family bereavement. Situated in the Heart of England, TLC offers a holistic package of care and clinical interventions responding to the individual needs of those referred to us. Our service is fully accessible and free at the point of delivery to achieve positive change over time in the areas of mental health and well-being and a re-engagement with life, which is often associated with bereavement and untimely death of a child; a parent; a sibling.

The charity's tried and tested model of clinical delivery using specialist professional counsellors and therapists to offer a wide range of individual and group support, as well as a variety of alternative therapies, is highly successful in delivering lasting regional solutions for bereaved families.

THE LAURA CENTRE CIO

TRUSTEES REPORT (Continued)

Objectives and activities

The charity was established under a trust deed dated 10 July 1986 and called the Children's Leukaemia and Cancer Fund. The aim of the charity was to relieve children and young persons suffering from life threatening diseases. The charity started operating under the name COPE during 1988 and formally adopted the change of name in 1992.

There were further amendments to the objectives in 2003 and these were incorporated into the new Charitable Incorporated Organisation (CIO) on 28 April 2016 objectives which are as follows:

- To relieve adults suffering the effects of an anticipated or actual death of a child of any age and from any cause and to relieve children and young people suffering the effect of anticipated or actual death of a sibling, parent, grandparent or other significant person through the provision of advice, counselling and support services; and
- To promote and encourage the study of and research into life threatening diseases and the effects of bereavement on parents, children and families and publishing the results of such research; and
- To promote and encourage the advancement of education for those involved in the provision of advice, counselling and support services to families who have suffered the death of a child or whose child is suffering from a life threatening illness; and
- The promotion of such other purposes recognised as charitable under the law of England and Wales in such parts of the United Kingdom as the Charity Trustees from time to time may think fit.

In order to achieve the above objective, The Laura Centre provides counselling, advice and support for anyone affected by the loss of a child and for children up to the age of 25 who are affected by a significant loss. The Centre employs qualified counsellors and psychotherapists to offer a range of individual and group work together with offering support, training, consultation and supervision to a range of organisations including local schools and nurseries and other voluntary and statutory agencies. The service is free to any bereaved person seeking support.

The trustees have taken into consideration the guidance on public benefit issued by the Charity Commission.

THE LAURA CENTRE CIO
TRUSTEES REPORT (Continued)

Achievements and performance

The Laura Centre are proud of being able to provide an almost full service throughout the pandemic. We have managed to steer our way through the uncertainty and now have a new hybrid way of working. Our service is now prepared for any eventuality that any lockdown or isolation period brings to clinical work. We provide face to face work as our main way of working, we also now provide telephone and virtual counselling over zoom.

The Laura Centre has been providing more specialist training to schools and other organisations in Leicestershire during the pandemic, as well as opening our advice line to 5 days a week. We have therefore been able to provide this extra specialist guidance and support to ensure the families effected by a bereavement over the pandemic are well supported.

The establishment of the Leicester, Leicestershire and Rutland Bereavement Hub, proved to be very beneficial for organisations working for bereaved communities. The Hub created by The Laura Centre in January 2020, allowed major bereavement organisations to come together and talk through their plans for working with bereaved communities throughout the pandemic. We were able to update and liaise with each other regarding the ever changing faces of our individual organisations, to ensure that overall effective support was offered during this time of crisis.

Our social media platform has been busier than ever with more hits and likes on Facebook and Twitter. We have been able to utilise this to keep the community up to date with what our service looks like during the pandemic.

Our Chairman Harry Moore received a well deserved MBE for his work for young people and to charity in Leicester.

THE LAURA CENTRE CIO

TRUSTEES REPORT (Continued)

Financial Review

At the balance sheet date the net assets of the charity totalled £137,896 (2020 - £127,365) of which £48,387 (2020 - £63,790) was restricted. The overall financial position of the charity was considered robust as £136,229 (2019 - £109,603) was held in cash. The total incoming resources for the year were £421,525 (2020 - £450,527). The total resources expended for the year were £410,994 (2020 - £496,392) resulting in a net surplus of £10,531 (2020 - deficit of £45,865). Salary costs for staff who work across the three areas are clearly delineated.

The covid-19 pandemic has had some negative effects on raising funds. However, we have worked hard to apply for emergency funds and continuation funds from our current funders. Unfortunately, some funds have not materialised due to the grant makers having insufficient funding available. We are however, pleased to say that we have persevered and have managed to not furlough staff. We realised that the service provided is more important than ever due to the ongoing deaths from Covid. In the next financial year we will be continuing to apply for more emergency funds, noting though that there are less of these available now. We will also be applying for funds from our usual funding pathways, and hope that the community based fundraising as well as the marathons, will be going ahead this coming year.

The Laura Centre...Dynamic organisation which uses its existing resources to its full potential; clinically, therapeutically, financially, ethically

In keeping with our longer term goals our objectives remain-to ensure the stability of the Centre in Leicester as the clinical, training, income development, ICT and administrative “hub” of the organisation together with the provision of two smaller clinical focussed centres in Derby and Coventry. This, we believe, is a cost effective model of care in a challenging funding environment. Parochial fundraising to fund local provision is to be developed at local level to fund the centres as we work towards the overarching regional strategy and business plan.

The development of the centres in Derby and Coventry was as a direct result of an identified need for bereaved families to be able to access a high quality, specialist bereavement counselling service, within their communities, by local statutory and voluntary sector agencies and The Laura Centre. Various grant making trusts and foundations remain the highest source of income generated. We continue to engender a positive partnership with the Clinical Commissioning Group (CCG) for Leicester City, East Leicestershire and Rutland for the provision of our services in those areas. Our grant is reviewed annually. The rest of our annual income raised against budget spend comes from groups and community fundraising, events, corporate adoptions, individuals, training and supervision.

Reserves policy

The long term aim of the trustees is to hold cash equivalent to approximately six months running costs in order to ensure the long term viability of the charity. Actual cash is less than this at present but the trustees are committed to achieving this aim. Total unrestricted funds at the year end are £89,509 and restricted funds £48,387.

THE LAURA CENTRE CIO
TRUSTEES REPORT (Continued)

Plans for future

We aim to maintain and sustain our work at The Laura Centre, the covid-19 crisis has had an impact on our charity financially and we wish to ensure that we are able to effectively continue with our care and support packages for our clients. We will make necessary changes where needed and the plan is to sustain what we have at least for this coming year.

Our Coventry service is now being run from our Leicester centre, we have been able to utilise the remote work we do and offer this to our clients if they do not want to come in for face to face work. There are good transport links from Coventry to Leicester so our clients have had no problems in accessing the service either face to face or remotely.

We will be continuing to offer an associate counsellor programme which will help aid the training of the future of the counselling profession in the mental health and bereavement fields. This model will help the sustainability of our client work and charity as well.

Group work will be developed this year, this will help our clients to get together and explore and collectively heal from their bereavement experiences. The lockdowns from covid have had a negative impact on our clients and resulted in significant isolation during a time of their grieving.

Groups will aid the impact of this and help our clients to deal with any issues around social anxiety or the burden of their grief in a safe space with qualified group staff. This will also help with our waiting lists which have increased due to more deaths due to the pandemic via Covid, but also through suicide and untreated illnesses.

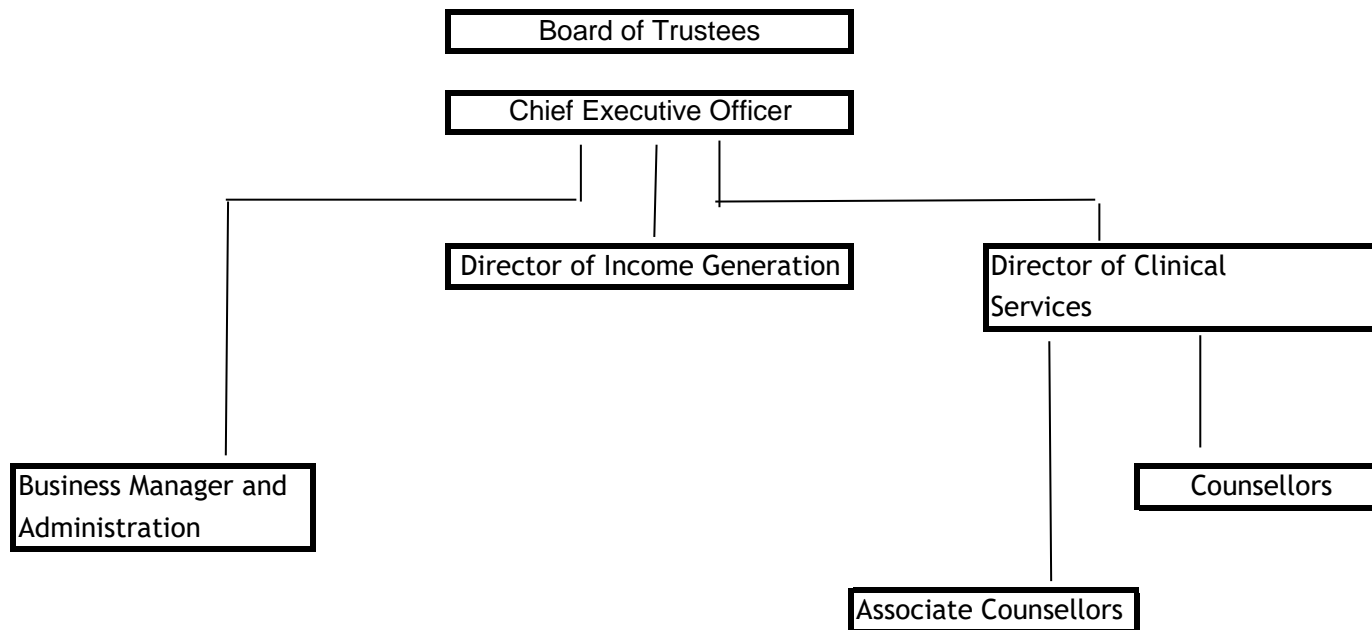
This will be the 30th year that The Laura Centre has been active. We will be organising events and publicising this special birthday to celebrate and hopefully draw in more funds this way.

THE LAURA CENTRE CIO

TRUSTEES REPORT (Continued)

Structure, governance and management

Decisions which affect the charitable objectives are made by the Trustees with advice from the Chief Executive and the Senior Management Team. The Chief Executive reports to the Chairman. Any operational decisions which involve expenditure of less than £1,000 is designated to the Chief Executive. The introduction of new Trustees is undertaken by the Chairman, Harry Moore and opportunities for further training in the role are brought to the attention of the Board of Trustees at their regular meetings throughout the year.



The Trustees are appreciative of the unconditional dedication shown by the team the charity employs and the supportive energies of the many volunteers who give up their own free time to help us in consistently achieving all that we do. We know that all this contributes to The Laura Centre's vital work in supporting those families we were founded to serve not only cope but re-engage with life and their communities. This is due to the quality of the clinical work we provide and our understanding of the way in which grief affects people in different ways.

Towards the end of our financial year, we were faced with the strain of the Covid-19 Pandemic. We have managed to set out clear contingency plans which will ensure the continuation of our services remotely via virtual means. The aim is to keep our staff and our clients as safe as possible under ever changing government guidelines, whilst ensuring a quality service to our beneficiaries. Financially there will possibly be an impact on the charity sector so we will be applying for emergency funding and continuing with our usual funding pathways that may be available to us.

The Laura Centre...a safe space for learning the tools to help in dealing with grief

Public benefit

The trustees have considered the Charity Commission's requirement in respect of Public Benefit. In their view the charity meets, in full, the criteria to satisfy the test.

Risk management

The charity trustees have reviewed the major risks which are the loss of funding to which the charity is exposed to and have established systems and procedures to manage those risks.

THE LAURA CENTRE CIO

TRUSTEES REPORT (Continued)

Trustees Responsibilities

The trustees are responsible for preparing the Trustees' Annual Report and the financial statements in accordance with applicable law and United Kingdom Accounting Standards (United Kingdom Generally Accepted Accounting Practice).

The law applicable to charities in [England & Wales/Northern Ireland]¹ requires the trustees to prepare financial statements for each financial year which give a true and fair view of the state of affairs of the charity and of the incoming resources and application of resources of the charity for that period.

In preparing these financial statements, the trustees are required to:

- select suitable accounting policies and then apply them consistently;
- observe the methods and principles in the Charities SORP 2019 (FRS 102);
- make judgements and estimates that are reasonable and prudent;
- state whether applicable accounting standards have been followed, subject to any material departures disclosed and explained in the financial statements;
- prepare the financial statements on the going concern basis unless it is inappropriate to presume that the charity will continue in operation.

The trustees are responsible for keeping proper accounting records that disclose with reasonable accuracy at any time the financial position of the charity and enable them to ensure that the financial statements comply with the Charities Act 2011, the Charities' (Accounts and Reports) Regulations 2008 and the provisions of the trust deed.

They are also responsible for safeguarding the assets of the charity and hence for taking reasonable steps for the prevention and detection of fraud and other irregularities.

Signed on behalf of the trustees:

H Moore

Date: 7 October 2021

REPORT OF THE INDEPENDENT EXAMINER TO THE TRUSTEES OF THE LAURA CENTRE CIO

Independent Examiner's Report to the Trustees of The Laura Centre CIO.

I report to the charity trustees on my examination of the accounts of the charity for the year ended 31 March 2021 which are set out on pages 10 to 21.

Responsibilities and basis of report

As the charity's trustees you are responsible for the preparation of the accounts in accordance with the requirements of the Charities Act 2011 ("the Act").

I report in respect of my examination of the charity's accounts carried out under section 145 of the Act and in carrying out my examination I have followed all the applicable Directions given by the Charity Commission under section 145(5)(b) of the Act.

Independent examiner's statement

Since the charity's gross income exceeded £250,000 your examiner must be a member of a body listed in section 145 of the Act. I confirm that I am qualified to undertake the examination because I am a member of ICAEW, which is one of the listed bodies.

I have completed my examination. I confirm that no material matters have come to my attention in connection with the examination giving me cause to believe that in any material respect:

- 1 accounting records were not kept in respect of the charity as required by section 130 of the Act; or
- 2 the accounts do not accord with those records; or
- 3 the accounts do not comply with the applicable requirements concerning the form and content of accounts set out in the Charities (Accounts and Reports) Regulations 2008 other than any requirement that the accounts give a 'true and fair view' which is not a matter considered as part of an independent examination.

I have no concerns and have come across no other matters in connection with the examination to which attention should be drawn in this report in order to enable a proper understanding of the accounts to be reached.

R J Radford FCA
The Rowleys Partnership Ltd
Chartered Accountants
Charnwood House
Harcourt Way
Meridian Business Park
Leicester
LE19 1WP

Date: 13 October 2021

THE LAURA CENTRE CIO

STATEMENT OF FINANCIAL ACTIVITIES
FOR THE YEAR ENDED
31 MARCH 2021

	Note	Unrestricted Funds £	Restricted Funds £	Total 2021 £	Total 2020 £
Incoming Resources					
Donations and legacies	2a	232,053	180,423	412,476	413,667
Charitable activities	2b	6,751	-	6,751	36,718
Investments	2c	28	-	28	142
Other income	2c	2,270	-	2,270	-
Total Incoming Resources		241,102	180,423	421,525	450,527
Resources Expended					
Raising funds		82	-	82	1,160
Charitable activities	3	213,289	195,283	408,572	492,892
Other costs	4	2,340	-	2,340	2,340
Total Resources Expended		215,711	195,283	410,994	496,392
Net (deficit)/income		25,391	(14,860)	10,531	(45,865)
Transfers between funds	12	543	(543)	-	-
Total funds brought forward		63,575	63,790	127,365	173,230
Total funds carried forward		89,509	48,387	137,896	127,365

Movements on reserves and all recognised gains and losses are shown above.

The notes on pages 13 to 21 form part of these accounts.

THE LAURA CENTRE CIO

COMPARATIVE STATEMENT OF FINANCIAL ACTIVITIES
FOR THE YEAR ENDED
31 MARCH 2020

	Note	Unrestricted Funds £	Restricted Funds £	Total 2020 £	Total 2019 £
Incoming Resources					
Donations and legacies	2a	179,329	234,338	413,667	492,499
Charitable activities	2b	36,718	-	36,718	48,581
Investments	2c	142	-	142	127
Total Incoming Resources		216,189	234,338	450,527	541,207
Resources Expended					
Raising funds		1,160	-	1,160	2,638
Charitable activities	3	256,473	236,419	492,892	514,087
Other costs	4	2,340	-	2,340	2,220
Total Resources Expended		259,973	236,419	496,392	518,945
Net (deficit)/income		(43,784)	(2,081)	(45,865)	22,262
Transfers between funds	12	1,333	(1,333)	-	-
Total funds brought forward		106,026	67,204	173,230	150,968
Total funds carried forward		63,575	63,790	127,365	173,230

Movements on reserves and all recognised gains and losses are shown above.

THE LAURA CENTRE CIO

**BALANCE SHEET
FOR THE YEAR ENDED
31 MARCH 2021**

	Note	Unrestricted Funds £	Restricted Funds £	Total 2021 £	Total 2020 £
Fixed Assets					
Tangible assets	6	1,174	-	1,174	3,649
Current Assets					
Stock		259	-	259	341
Debtors	7	11,552	-	11,552	25,821
Cash at bank	8	87,842	48,387	136,229	109,603
		<u>99,653</u>	<u>48,387</u>	<u>148,040</u>	<u>135,765</u>
Current Liabilities					
Liabilities falling due within one year	9	11,318	-	11,318	12,049
		<u>11,318</u>	<u>-</u>	<u>11,318</u>	<u>12,049</u>
Net Current Assets		88,335	48,387	136,722	123,716
		<u>88,335</u>	<u>48,387</u>	<u>136,722</u>	<u>123,716</u>
Net Assets		<u>89,509</u>	<u>48,387</u>	<u>137,896</u>	<u>127,365</u>
Fund Balances					
Unrestricted funds	12	89,509	-	89,509	63,575
Restricted funds	12	-	48,387	48,387	63,790
		<u>89,509</u>	<u>48,387</u>	<u>137,896</u>	<u>127,365</u>

Approved by the Trustees and signed on their behalf on 7 October 2021 by:

H Moore
Trustee

The notes on pages 13 to 21 form part of these accounts.

THE LAURA CENTRE CIO

NOTES TO THE ACCOUNTS FOR THE YEAR ENDED 31 MARCH 2021

1 Accounting policies

a) General information and basis of preparation

The Laura Centre is a charitable incorporated organisation in England. The address of the registered office is given in the charity information on page 1 of these financial statements. The nature of the charity's operations and principal activities are detailed in the trustees report.

The financial statements of the charity, which is a public benefit entity as defined by FRS 102, have been prepared in accordance with the Charities SORP (FRS 102) 'Accounting and Reporting by Charities: Statement of Recommended Practice applicable to charities preparing their accounts in accordance with the Financial Reporting Standard applicable in UK and Republic of Ireland (FRS 102) (effective 1 January 2019)', Financial Reporting Standard 102 'The Financial Reporting Standard applicable in the UK and Republic of Ireland' and the Charities Act 2011. The financial statements have been prepared under the historical cost convention.

The financial statements are prepared on a going concern basis under the historical cost convention, modified to include certain items at fair value. The financial statements are presented in sterling which is the functional currency of the charity and rounded to the nearest £1.

The financial statements have been prepared to give a 'true and fair' view and have departed from the Charities (Accounts and Reports) Regulation 2008 only to the extent to provide a 'true and fair view'. This departure has involved following the Accounting and Reporting by Charities: Statement of Recommended Practice applicable to charities preparing their accounts in accordance with the Financial Reporting Standard applicable in the UK and Republic of Ireland (FRS 102) issued in October 2019 rather than the Accounting and Reporting by Charities: Statement of Recommended Practice effective from 1 April 2005, which has since been withdrawn.

The significant accounting policies applied in the preparation of these financial statements are set out below. These policies have been consistently applied to all years presented unless otherwise stated.

b) Funds

Unrestricted funds are available for use at the discretion of the trustees in furtherance of the general objectives of the charity and which have not been designated for other purposes.

Designated funds comprise unrestricted funds that have been set aside by the trustees for particular purposes. The aim and use of each designated fund is set out in the notes to the financial statements.

Restricted funds are funds which are to be used in accordance with specific restrictions imposed by donors or which have been raised by the charity for particular purposes. The cost of raising and administering such funds are charged against the specific fund. The aim and use of each restricted fund is set out in the notes to the financial statements.

THE LAURA CENTRE CIO

**NOTES TO THE ACCOUNTS
FOR THE YEAR ENDED
31 MARCH 2021**

1 Accounting policies - continued

c) Income recognition

All incoming resources are included in the Statement of Financial Activities (SoFA) when the charity is legally entitled to the income after any performance conditions have been met, the amount can be measured reliably and it is probable that the income will be received.

Income from grants and local authority fees are recognised at fair value when the charity has entitlement after any performance conditions have been met, it is probable that the income will be received and the amount can be measured reliably. If entitlement is not met then these amounts are deferred.

Donated facilities and donated professional services are recognised in income at their fair value when their economic benefit is probable, it can be measured reliably and the charity has control over the item. Fair value is determined on the basis of the value of the gift to the charity. For example the amount the charity would be willing to pay in the open market for such facilities and services. A corresponding amount is recognised in expenditure.

Income from investments is included in the SOFA in the period in which it is receivable.

d) Expenditure recognition

All expenditure is accounted for on an accruals basis and has been classified under headings that aggregate all costs related to the category. Expenditure is recognised where there is a legal or constructive obligation to make payments to third parties, it is probable that the settlement will be required and the amount of the obligation can be measured reliably.

e) Fixed assets and depreciation

Fixed assets acquired for use by the charity are capitalised and depreciated over their estimated useful life at the following rates:

Depreciation periods are as follows:

Alterations to leasehold property	Over period of the lease
Fixtures, fittings and equipment	Three years

f) Stock

Stock is valued at the lower of cost and net realisable value.

g) Pensions

The charity operates a defined contribution pension plan for its employees and is recognised as an expense.

h) Taxation

The charity is exempt from tax on its charitable activities.

THE LAURA CENTRE CIO

**NOTES TO THE ACCOUNTS
FOR THE YEAR ENDED
31 MARCH 2021**

1 Accounting policies - continued

i) Debtors and creditors

Debtors and creditors with no stated interest rate and receivable or payable within one year are recorded at transaction price. Any losses arising from impairment are recognised in expenditure.

j) Cash at bank and in hand

Cash at bank and in hand includes cash in hand and monies on short term deposits at the bank.

k) Going concern

The financial statements have been prepared on a going concern basis as the trustees believe that no material uncertainties exist. The trustees have considered the level of funds held and the expected level of income and expenditure for 12 months from authorising these financial statements. The budgeted income and expenditure is sufficient with the level of reserves for the charity to be able to continue as a going concern.

THE LAURA CENTRE CIO

NOTES TO THE ACCOUNTS
FOR THE YEAR ENDED
31 MARCH 2021

2 Income	Unrestricted Funds £	Restricted Funds £	Total 2021 £	Total 2020 £
a) Donations and legacies				
Donations including gift aid	44,548	-	44,548	60,044
CCG grant	-	47,419	47,419	63,031
Children in need	-	-	-	33,284
Other income from grants	187,505	133,004	320,509	257,308
	<u>232,053</u>	<u>180,423</u>	<u>412,476</u>	<u>413,667</u>
b) Charitable activities				
Training and lecturing fees	3,080	-	3,080	1,790
Supervision and lecture fees	2,178	-	2,178	1,525
Sale of goods	143	-	143	815
Fundraising events	1,350	-	1,350	32,588
	<u>6,751</u>	<u>-</u>	<u>6,751</u>	<u>36,718</u>
c) Investments				
Bank interest	28	-	28	142
d) Other income				
Insurance claim for property repairs	2,270	-	2,270	-
	<u>2,270</u>	<u>-</u>	<u>2,270</u>	<u>-</u>
3 Charitable activities	Unrestricted Funds £	Restricted Funds £	Total 2020 £	Total 2019 £
a) Direct charitable costs				
Salaries and national insurance	36,095	195,283	231,378	302,944
Bought in therapy sessions and expenses	17,508	-	17,508	22,473
Supervision and training of counsellors	9,253	-	9,253	9,960
Memorial service	-	-	-	160
Book of remembrance	36	-	36	107
	<u>62,892</u>	<u>195,283</u>	<u>258,175</u>	<u>335,644</u>
b) Support and administration				
Salaries and national insurance	56,413	-	56,413	50,353
Depreciation	2,621	-	2,621	3,504
Insurance	8,739	-	8,739	8,307
Premises expenses	51,485	-	51,485	55,619
Office expenses	31,139	-	31,139	39,465
	<u>150,397</u>	<u>-</u>	<u>150,397</u>	<u>157,248</u>
Combined charitable activity cost	<u>213,289</u>	<u>195,283</u>	<u>408,572</u>	<u>492,892</u>

THE LAURA CENTRE CIO

**NOTES TO THE ACCOUNTS
FOR THE YEAR ENDED
31 MARCH 2021**

4 Other costs	Unrestricted Funds £	Restricted Funds £	Total 2021 £	Total 2020
Accounts examination fee	<u>2,340</u>	<u>-</u>	<u>2,340</u>	<u>2,220</u>

5 Staff & Trustees

	2021 £	2020 £
Staff costs during the period were as follows:		
Wages and salaries & session workers	268,140	324,765
Employer's National Insurance	17,042	22,318
Pension costs	<u>5,170</u>	<u>6,214</u>
	<u>290,352</u>	<u>353,297</u>

The trustees did not receive any remuneration or were reimbursed any expenses during the year.

Key personnel received total remuneration of £68,333 (2020 - £77,196) during the year.

Key management personnel comprises of the Chief Executive and the Director of Clinical Services. Both individuals participate in the provision of the clinical service for the Organisation as well as undertaking their management responsibilities.

The average number of persons employed by the charity during the year was 14 (2020 - 17).

No employees received total employee benefits (excluding employer pension costs) of more than £60,000.

6 Tangible fixed assets

	Alterations to Leasehold Property £	Fittings & Equipment £	Total £
Cost or value on transfer at 1 April 2020	19,996	128,577	148,573
Additions	-	146	146
Disposals	<u>-</u>	<u>(19,580)</u>	<u>(19,580)</u>
Cost or valuation at 31 March 2021	<u>19,996</u>	<u>109,143</u>	<u>129,139</u>
Accumulated depreciation at 1 April 2020	19,996	124,928	144,924
Charge for the year	-	2,621	2,621
Eliminated on disposal	<u>-</u>	<u>(19,580)</u>	<u>(19,580)</u>
Accumulated depreciation at 31 March 2021	<u>19,996</u>	<u>107,969</u>	<u>127,965</u>
Net book value at 31 March 2021	<u>-</u>	<u>1,174</u>	<u>1,174</u>
Net book value at 31 March 2020	<u>-</u>	<u>3,649</u>	<u>3,649</u>

THE LAURA CENTRE CIO

**NOTES TO THE ACCOUNTS
FOR THE YEAR ENDED
31 MARCH 2021**

	2021	2020
	£	£
7 Debtors		
Prepayments	4,357	18,551
Other debtors	7,195	7,270
	<u>11,552</u>	<u>25,821</u>
8 Cash at bank and in hand		
Bank operating accounts	46,949	55,237
Deposit accounts	89,162	54,108
Petty cash	118	258
	<u>136,229</u>	<u>109,603</u>
9 Creditors: liabilities falling due within one year		
Trade creditors	5	150
Accruals and deferred income	5,449	4,017
Social security and other taxes	5,864	7,882
	<u>11,318</u>	<u>12,049</u>
10 Operating lease commitments		
Total future minimum lease payments under non-cancellable operating leases, for each of the following periods:		
Land & Buildings		
Due in one year	45,000	34,750
Due in 2-5 years	40,200	61,200
More than five years	-	-
	<u>85,200</u>	<u>95,950</u>

During the year total lease payments of £45,000 (2020 - £43,500) are recognised as an expense.

11 Related party disclosures

There were no related party transactions for the year ended 31 March 2021 and year ended 31 March 2020.

THE LAURA CENTRE CIO

NOTES TO THE ACCOUNTS FOR THE YEAR ENDED 31 MARCH 2021

12 Funds movements

	Funds at 1 April 2020 £	Incoming resources £	Outgoing resources £	Transfers £	Funds at 31 March 2021 £
<i>Unrestricted funds</i>					
General fund	149,615	196,382	(148,945)	(107,543)	89,509
<i>Designated funds</i>					
Coventry branch	(16,685)	1,982	(22,078)	36,781	-
Derby branch	(68,536)	38,204	(42,158)	72,490	-
Nottingham branch	(819)	4,534	(2,530)	(1,185)	-
<i>Total unrestricted funds</i>	<u>63,575</u>	<u>241,102</u>	<u>(215,711)</u>	<u>543</u>	<u>89,509</u>
<i>Restricted funds</i>					
Counselling	-	47,419	(47,419)	-	-
Maud Elkington Charitable Trust	70			-	70
Leicester Lions - quiet room	172			-	172
Derby Community Foundation					
Equipment for children	34			-	34
Covid fund		10,000	(10,000)		
Zephyrys Project	543			(543)	-
St James Place	19,633		(19,633)	-	-
The Big Lottery (Leics)	34,553	69,216	(65,508)	-	38,261
The Big Lottery (Derby)	4,318	8,143	(8,095)	-	4,366
The Big Lottery (Cov)	4,317	4,072	(8,389)	-	-
Wathall Funeral Directors	150	-		-	150
Leics County Council					
- Covid Fund	-	14,000	(14,000)	-	-
Leics Community Fund					
- Covid Fund	-	5,000	(5,000)	-	-
Foundation Derbyshire					
- Covid Fund	-	8,000	(2,666)	-	5,334
Children in Need - Next steps	-	14,573	(14,573)	-	-
	<u>63,790</u>	<u>180,423</u>	<u>(195,283)</u>	<u>(543)</u>	<u>48,387</u>
Total funds	<u>127,365</u>	<u>421,525</u>	<u>(410,994)</u>	<u>-</u>	<u>137,896</u>

Counselling

Funds received specifically to pay the costs of full and part time bereavement counsellors.

Maud Elkington Charitable Trust

Chairs for Counselling room.

Derby Freemasons

Derby attic room refurbishment.

THE LAURA CENTRE CIO
NOTES TO THE ACCOUNTS
FOR THE YEAR ENDED
31 MARCH 2021

12 Funds movements - continued

Zephyrs Project

This fund was restricted to the Zephyrs project which ended in October 2020. The fund covered the cost for a counsellor for 7.5 hours per week, management, admin and referral support fees. Therefore a transfer was made from this fund releasing the unused funds to the general fund.

St James Place

Funds received to support the salary costs of full-time equivalent Children and Young Persons Counsellor.

The Big Lottery

Funds received towards the provision of counselling services.

Wathall Funeral Directors

Derby Counselling Room Refurbishment.

Children In Need - Next steps

Monies received to fund a 30 hour salary for children and young people.

Covid-19 Grants

Several grants were received during the year to provide counselling services for adults and children.

THE LAURA CENTRE CIO

NOTES TO THE ACCOUNTS
FOR THE YEAR ENDED
31 MARCH 2021

12 Funds movements - continued

Comparatives for movement in funds

	Funds at 1 April 2019 £	Incoming resources £	Outgoing resources £	Transfers £	Funds at 31 March 2020 £
<i>Unrestricted funds</i>					
General fund	158,759	164,293	(173,437)	-	149,615
<i>Designated funds</i>					
Coventry branch	(8,250)	5,285	(13,720)	-	(16,685)
Derby branch	(43,760)	46,611	(72,720)	1,333	(68,536)
Nottingham branch	(723)	-	(96)	-	(819)
<i>Total unrestricted funds</i>	<u>106,026</u>	<u>216,189</u>	<u>(259,973)</u>	<u>1,333</u>	<u>63,575</u>
<i>Restricted funds</i>					
Counselling	-	63,031	(63,031)	-	-
TLC Derby IT	7	-	(7)	-	-
Children in Need	2,089	33,824	(35,913)	-	-
Maud Elkington Charitable Trust	70	-	-	-	70
Leicester Lions - quiet room	172	-	-	-	172
Coventry BS	114	-	(114)	-	-
Derby Community Foundation equipment for children	34	-	-	-	34
Zephyrs Project	371	5,265	(5,093)	-	543
Sheldon Trust	-	5,000	(5,000)	-	-
St James Place	21,284	32,000	(33,651)	-	19,633
The Big Lottery (Leics)	34,333	64,922	(64,702)	-	34,553
The Big Lottery (Derby)	4,290	8,116	(8,088)	-	4,318
The Big Lottery (Cov)	4,290	8,115	(8,088)	-	4,317
Wathall Funeral Directors	150	-	-	-	150
Derby Freemasons	-	2,000	(667)	(1,333)	-
Rugby Crematorium	-	8,000	(8,000)	-	-
Rodgers & Leask Ltd	-	2,065	(2,065)	-	-
Toyota Charitable Fund	-	2,000	(2,000)	-	-
	<u>67,204</u>	<u>234,338</u>	<u>(236,419)</u>	<u>(1,333)</u>	<u>63,790</u>
Total funds	<u>173,230</u>	<u>450,527</u>	<u>(496,392)</u>	<u>-</u>	<u>127,365</u>

13 Independent Examination fee

The amount payable to the independent examiner for the independent examination was £2,340 (2020: £2,340) including VAT and £858 (2020: £660) for payroll services.