



Annual Report for Period 1st September 2023 to 31st August 2024

Charity Commission Registered Number **1166757**

You will find us on Front Street, Acomb, York postcode YO24 3BX

The **governing documents** of the Methodist Church are the Deed Of Union (1932) and Methodist Church Act (1976).

Section 4 Methodist Church Act 1976 states

The purposes of the Methodist Church are and shall be Purposes deemed to have been since the date of union the advancement of—

- (a) the Christian faith in accordance with the doctrinal standards and the discipline of the Methodist Church;*
- (b) any charitable purpose for the time being of any Connexional, district, circuit, local or other organisation of the Methodist Church;*
- (c) any charitable purpose for the time being of any society or institution being a society or institution subsidiary or ancillary to the Methodist Church;*
- (d) any purpose for the time being of any charity being a charity subsidiary or ancillary to the Methodist Church.*

The Mission Statement of Acomb Methodist Church

Our Church's calling is to encourage growth through:

Worship

- *To expand our provision of different worship styles in order to both meet the worshipping needs of our present congregation, but also to engage with those who are on the fringes or outside the church at present.*

Learning and Caring

- *Provide stepping stones for developing discipleship and spiritual exploration to enable people to grow in their faith.*
- *Provide particular opportunities for our young people to develop their own ministry and discipleship.*

Service

- *Supporting community development and action in our context*
- *Seek ways to reduce our environmental impact in tune with the connexional policy of 80% carbon reduction by 2050.*

Evangelism

- *Create opportunities to build relationships with our community*
- *Promote the things we do more clearly to the outside world.*
- *Provide opportunities to explore faith*

The Administration of Acomb Methodist Church

The Church is held on the 1976 Model Trust by the Trustees for Methodist Church Purposes, and the Church Council act as Managing Trustees.

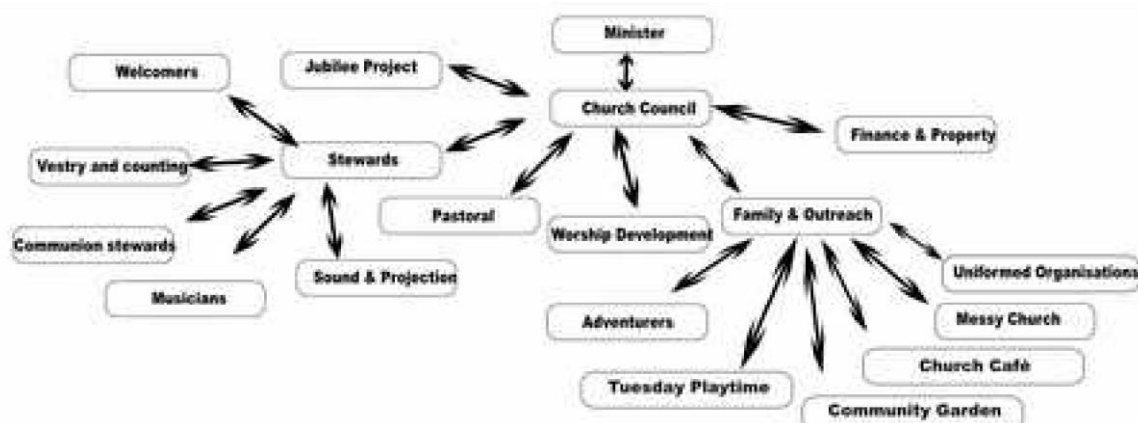
Managing Trustees at 31st August 2024

Name	Role(s)
Rev. Andy Lindley	Minister, Chair
David Blamire	Steward, Communion Steward
Robin Taylor	Treasurer
Gillian Mason	Steward
Joan North	Pastoral
Olive Waterfield	Member
Sheila Blamire	Communion Steward
Joan North	Member
Rob Harrison	AV for worship
Fran Taylor	Member
Geraldine Ferry	Steward
Richard Grosberg	Member
Sarah Stone	Member
Ruth Setchell	Member
Lois Broadbent	Member
Naomi Prince	Member

The Church Council will appoint annually all Church Officers as determined from time to time by the Council whether on the nomination of a committee or otherwise; all such appointments being for the year commencing 1 May, apart from the Church Treasurer, whose appointment will commence on 1 September. The Council will also appoint the committees of the Church, again as from 1 May each year.

Church Council members (managing trustees) are appointed by the Annual Church meeting at which all church members are eligible to vote.

Organisation of the Church



Reports from Church Outreach, Groups, Projects, and Ministries

AGM 18th May 2025

Garden (Kath Musgrove):

The Acomb Methodist Community garden is now in its 10th year and has truly gone from strength to strength.

In the beginning there was a small; but determined and dedicated group of people carving out a garden from reclaimed land. The garden gradually evolved round a central cross shape defined by the paths. The 4 quadrants were productive, playful, prayerful and colourful. In addition to these main areas, we have a winter interest garden, the lockdown bed, a herb bed, and in the centre, a water feature which trickles delightfully over cobble stones.

We have a great cohort of people on the Saturday morning monthly sessions mainly from church; but some from the wider areas who all find it offers them something, people come and tell me how much they have benefited from the sessions. The morning coffee and cake is a great opportunity for everyone to chat and get to know each other. The garden is used and enjoyed by many other people from Acomb who just come to sit and enjoy the peace and solitude it provides - a great asset for the church and everyone in the area.

Property (Robin Taylor):

It has been a fairly dramatic couple of years for our property and resourcing it. Last year Rev Andy was caretaking the property role and oversaw two fairly major updates. The windows adjacent to the side entrance and associated guttering were replaced. To be fair this was initiated by Gill Mason while she wore the property hat but she had stood down before it bore fruit. Then we spent a lot (relatively) of our reserve money updating the fire alarm system, and adding new fire doors which had been mandated by a fire risk assessment.

Coming into this Methodist year and Rev Andy had moved on and I handed over treasurer responsibilities to Fran after last year's accounts were examined in October. Richard, Fran, and I formed a resources group to look after finances and property in this big impact year as we sought to enact the vision of 'Building Sustainable Hope' to transition the building for the next 50 years. Thanks to Sue Wrenn, who has been giving us consultative support on property matters.

I am carrying the Property hat notionally, but it is fair to say we have worked collaboratively on finance, property, and project management.

As is clear to all, the construction phase of what we have been working on is upon us! As you may recall last year, we were intending to replace the pitched roof and rainwater goods over church, add on substantial solar panels (44kWh), replace the windows in church with double glazed units and replace the suspended ceiling and lighting in room 4 at a cost of c £300,000. We started working the detail with District, D3 (architects and contract manager), Circuit Resources manager Angie and our resources team. Everything went well until just before planning permission was about to be approved when we were asked to carry out a bat survey. The survey found evidence of bats in the roof. Now the grant money available has to be spent by June and planning permission would not be forthcoming without a spring survey to determine mitigations for the bat presence so the project had to pivot substantially to retain the grant money.

Long story short we decided to substitute the flat roofs over room 2 and corridors for the pitched roof, reduce the amount of solar panels to fit the flat roof space and retain the rest. District found other churches who could soak up the shortfall on solar panels as that was a key condition of the grant money. So far, we have £272,000 in hand of a project cost of £286,000 so we may end up having to find shortfall at the end depending how much contingency is used up. Fran can speak to how we do that if necessary.

So to repeat, we are replacing and insulating the flat roofs over room 2 and the corridors and that is in progress now. From the 16th May, the windows in church will begin to be replaced and continue for just over 3 weeks. The church will still be useable in the evenings and at weekends. On the 20th May, work will begin to replace the ceiling in room 4 (about 2 weeks we hope). At the beginning of June work on the solar panels will start. Projected completion is scheduled to be 13th June.

Obviously behind the scenes Richard and Lindsay have been working with all the groups that use our church trying to keep the disruption to a minimum and keeping everyone informed. It does mean we have had to suspend Friday Cafe until the church windows are complete.

All our thanks to Lindsay and the caretaking team as they cope with the disruptions that inevitably arise from having a live construction site, while still keeping all our lettings going.

In other property news a few things have been repaired (taps, urinal flush and sadly a leak in the flat roof – if only we had known!). Some things have been maintained and serviced – coffee machine, central heating in church and bungalow and the organ.

When the current work is complete we will get the fire alarm system and fire extinguishers serviced and start to pick up ongoing work from there. One issue we want to resolve is the curtaining in room 4 and possibly room 5. We are all aware we will be very short of money until the anticipated energy savings kick in and we can fill the money drain that is the bungalow while it is unoccupied. Richard has been in contact with the York Council's social housing department YorHomes again to see what they can do now they are in a new financial year.

Going forward, we would like to find the money to replace the roof on church, but are concerned that some of us are feeling run down from the efforts thus far; it might be a long haul of church fundraising if a magic bullet grant cannot be found. So, if you have a passion for what the church does and want it to be around for the next 50 years come and join the resources team. That goes double if you have a passion for fundraising!

Cinema (Robin Taylor):

The cinema continues to meet monthly and there is a sense of a steady adherence with maybe a gradual increase. It continues to be a place for socialising and has the feel of a night out. We try to be as accessible as possible and always run with subtitles as that helps many of our attenders.

A double header film sandwiching a splendid high tea (thanks to Sarah!) did duty as a fundraiser and a celebration of the Community Cinema. Many plaudits were given and received so it may be something we attempt again.

Numbers vary month to month in the range 30-70 and they tend to be 'regulars' for the most part but we often welcome first timers.

We are always on the lookout for helpers – particularly for serving refreshments before the film and at the half time interval. If you are interested, speak to Andrew Wrenn or Robin Taylor.

Safeguarding (Gerry Ferry):

Safeguarding is the responsibility of every one of us. Training is available, indeed mandatory, for certain roles in the church, but it is open to all who want to learn more about protecting children, young people, and vulnerable adults (warmly invited!) The two types of training are Foundation and Advanced. There is a Foundation session planned for 18 June at Haxby. Please book through the Circuit Office. Details of all these courses can be found on the District website and renewal is every four years. For details of who should go on them, please look at the Safeguarding noticeboard by the door into church. DBS checks have been undertaken for people who have changed or gotten new roles, and they have been safely recruited. Volunteer role forms are now being rolled out for all who have a role in the church. Please fill them in and return them to me. This is so that we can see where the gaps are.

I know that this seems to be a lot of form filling, but, as I said earlier, we want people to be safe, so a big thank you to everyone who works hard to make this community what it is and to continue to grow.

Boardgame Church (Isaac Broadbent):

Board Game Church has had a rocky, but promising start. I took a while to get to grips with what the afternoons should be like. This meant that it has not been advertised as much as it could, and church members have not often been given adequate notice. This has led to slightly lower turnout from church members and members of the public compared to the potential. Even still, we have had a lot of people from the wider Acomb and York areas attend. This has meant that people who might not otherwise come into the church have begun to engage with us. We have also had people kindly donate board games to the collection.

I waited to properly advertise the afternoons until I was able to update the website with the current information. There was no point telling people to look at the website for information when it was still giving Andy's contact details. This is now updated, and I will start pushing the events properly to both church members and the wider community of Acomb.

There is the possibility to raise more funds for the church with the sale of refreshments during the afternoon. This does need more thought though, and I think that a joint refreshment store with other church events could be a good method to ensure that catering supplies are not duplicated and are less likely to expire. Stock use and levels would need to be recorded accurately and communicated between church events.

I am excited for where Board Game Church is going to go, but I would love input from the Church as to what the goals of the afternoons should be and what would make it easier or more appealing for them to attend.

Friday Café:

The Pop up Café continues to be busy when it's open on Fridays during term time between 10am and 1.30pm. Our main customers are the parents and children who attend the classes that run at Church that morning – Tumble Tots, Rhythm Time, Sing & Sign, and Treasure Chest – but the café is open to all and we have a wide range of people who come in, either occasionally or on a regular basis. We believe that we host several dozen people on average each week while we are open, including both adults and children. We do not particularly push a church message to them, but we believe that the café is an important part of building

relationships and community with the users of the building. We also have the screen up giving information about all church events whilst the café is open.

Lizzie led a wonderful Christmas singalong in December and many parents and children followed the Easter Trail that Louise set up in the garden.

Sarah works extremely hard as the café manager, baking wonderful cakes every week as well as serving whilst we are open from 10 to 1.30. Richard and Robin also help in serving and working as baristas whilst Lizzie and Gerry are excellent at front of house – talking to people, serving and clearing tables. Katie has joined us this year as barista and front of house! Joan continues to bake amazing cakes each week – she is definitely our “star baker”! If you have not been to the café at all – please come on down, we would love to see you. We tend to be busiest between 10.30 and 12.

Pastoral:

1. We currently have....

Members 55

Adherents 30

Total 85

These figures include Katie and Steve Hobson, and Lois Broadbent who have transferred their membership to AMC, and Jo Lindley who has transferred out.

Also we sadly lost two of our congregation this year. Pauline Alexander and Mary Pearson. Their long and precious lives were celebrated at their funerals here in February this year.

2. Our pastoral team consists of 12 members. Geraldine Ferry also joins our meetings as safeguarding officer and we value her input. All the team do an excellent job of care. We all benefitted from taking part in a dedication service in the new year led by Rev John Hayward too.

3. At our latest team meeting, Rev John initiated a training session for us all on how to care for the bereaved or those who were grieving for whatever reason. This included “10 Best things to say to someone in grief” and “10 Worst things to say to someone in grief”. This training was very beneficial to us all.

Eco-Church:

Our Eco Church journey has taken a back seat recently and unfortunately we were not in a position to make an application for silver by the deadline of End Jan. Therefore, when we do apply, we are not subject to the more stringent requirements of the new Eco Church survey. As a member of ACT NOW, we have changed how we are operating and are no longer offering the talks, conference and fair. Instead, we are going back to our roots in supporting each other with becoming sustainable Churches and congregations whilst looking for opportunities for collaboration.

The new Eco Church Gold requirements involve a lot of policies and procedures and need to show that care for creation is embedded. It is no longer a tick box exercise and requires a real and focused commitment to everything we do. We therefore need to consider as a Church if this is truly something we want at the heart of our mission and what that would look like for us as a community. I am concerned at present that Eco Church is a want held by relatively few and not core to who we are as a Church.

However, it might be that our current Building Sustainable Hope project and new Minister might inject some passion into this area of our mission. Looking forward, we need to do

some work as a community in articulating our vision as a Church, and I am hopeful that environmental concern and care for creation will be a key part of this. Something to consider over the next year.

Tea To Go:

This project continues to be a real blessing to the community with over 40 healthy home cooked meals being prepared every week. We have run every week except for where there has been a bank holiday and have an excellent team of volunteers. The community is really very supportive and looks after each other. We are indebted to Mikey, customer turned head chef, for helping so regularly.

Funds are looking quite good as the Food Bank grant covers 45% of our costs but we will need some community donations to meet the rest of the yearly £6k budget. We have struggled with volunteers but have had a number of new people starting over the last few months. A few under 18's are doing their Duke of Edinburgh with us (following an update to our safeguarding policy) which is great for us and them.

Personally, I am still struggling with the pressure of too many roles and do need some more people to help with the administration of this key mission. There is a paid role of 2 hours per week (at Real Living Wage) for the right person, to take the orders from customers, order stock items, and recruit and manage volunteers. If anybody knows of someone who would be a good fit for volunteer management then I would be very interested in talking to them.

Other things that need doing:

- Review and update policy and procedures
- Basic safeguarding training for all volunteers
- Create constitution and committee
- Hold an AGM

Any help in these would be gratefully received.

Youth Work:

Children and Youth sessions are going well with young people engaged in our time spent out of the main worship space. Some families have to organise their weekends around this offering, and we are very glad it is working well.

We have a good volunteer base who have been safely recruited. There is scope for more (especially a doorkeeper for Godly Play), but we are able to function. It would also be useful for the young people to have a more diverse input, so all would be welcome to volunteer to help with our offering.

Katie and I had a discussion with the Young People about development of Youth work and what they like and dislike. She is going to write this up as a report, but we do feel that we need to have a 10-year development plan for Children and Young People. It is important to bear in mind that whilst there are many young people in our church congregation currently, in 5 years time many of them will be adults. An area for development is perhaps how we engage with and invite families from our communities and outreach offering to join us on a Sunday, especially those who are unchurched. We also may need to look at if there is anything different we should be doing.

As part of this, we are delighted that the Circuit is intending to make some more hours available to us from the Children, Youth and Families Team. It is likely that over the next year, Amy will have more time to work with our youth and their families and develop our offering to

better meet their needs. The youth fund is also looking quite healthy (at about £8k) which will help us build this area of our ministry so we can continue to grow and develop both as a church, and the faith of our young people.

Minister's Message:

Grace and peace to you all in the name of our Lord, Jesus Christ.

It is my privilege and pleasure to write a short review of the year so far. First, my thanks to all of you for the way I was welcomed into the church. It has never felt anything less than “our church” to me rather than “your church”.

Before I get into my reflections on Acomb, significant changes are happening in the Circuit. Reverends David Bidnell, John Schofield and Judith Stoddart are leaving in the summer. Reverends Jill Pullan, Alex Middleton-Laing and Kate Paterson will be joining the circuit. Of course, Jill will be your minister. I have already had a handover meeting with her, and she attended our last leadership meeting and had a long conversation with the team after I left. I know she is very much looking forward to joining you in September and I hope you will be just as excited to welcome her. My last Sunday service as your minister will be on Sunday, 31st August. However, I will be Superintendent Minister for York from September, so you haven't seen the last of me.

With regards to Acomb, I don't know any other church that is as busy as this one and so well established in its community. It has been humbling to walk alongside you all through the year. I am not going to single people out by name and the details of what happens in all the different activities in church is properly left to those who run them and you will have had reports from them. However, I would like to pay tribute to all who volunteer week in and week out to ensure the smooth running of the church. Thank you to you all.

As we look around today, we see that the building work has commenced, and we are encased in a veritable spider's web of scaffolding. Very soon we will have new windows, repaired flat roofs, extra solar panels and batteries. That is good, but as I said at the beginning of the year the physical building work is in some ways the least important part of Building Sustainable Hope. The most important part is the building of hope. Hope in our church and hope in our community. I deliberately chose “Let us build a house where love can dwell” as our final hymn at this morning's service as a challenge for all of us. I pray that in the days, months and years ahead you will be that house, where love can dwell, where prophets speak, where love is found, where we reach out from our walls to our community and beyond. A house where all are named, their songs and visions heard. A place where all are loved and treasured as Christ loves and treasures each one of us.

May the Lord bless you and keep you; the Lord make his face shine on you and be gracious to you; the Lord turn his face toward you and give you peace. Amen.

THE METHODIST CHURCH

STANDARD FORM OF ACCOUNTS

Acomb Methodist	Church
-----------------	--------

FOR THE YEAR ENDED

31 August 2024

York	Circuit	Circuit no	29/33
------	---------	------------	-------

Registered Charity - Charity Registration number

1166757

If not a registered charity: Her Majesty's Revenue and
Customs Gift Aid number

(The HMRC number is equivalent to a registered charity number in terms of evidence of charitable status and may be used to give to donors or grant funders wishing to see evidence of the organisation's charitable status. Methodist charities in England and Wales that are not registered charities are excepted from registration under Statutory Instrument 2014 No.242)

Minister:

Rev Andrew Lindley

Church Stewards:

David Blamire	Gillian Mason
Geraldine Ferry	Lois Broadbent

Treasurer:

Robin Taylor

SECTION A		Unrestricted Funds	Restricted Funds	Totals this year	Totals last year
		£	£	£	£
a1	RECEIPTS				
a2	Offerings and Tax recovered	36,920	727	37,647	35,532
a3	Bank and CFB interest and Investment income	116		116	113
a4	Lettings	51,586		51,586	42,634
a5	Other receipts	9,217	12,302	21,519	69,038
a6	TOTAL RECEIPTS	97,839	13,029	110,868 (a7)	147,317

SECTION B					
b1	PAYMENTS				
b2	Circuit Assessment or Share	40,848		40,848	38,498
b3	Donations	0	0	0	206
b4	Repairs and Maintenance	33,691	0	33,691	11,167
b5	Utilities (Insurances, water charges, heating & lighting)	16,776		16,776	12,781
b6				0	0
b7	Other payments	36,003	5,496	41,499	97,964
b8	TOTAL PAYMENTS	127,318	5,496	132,814 (b9)	160,616

SECTION C					
c1	NET RECEIPTS/PAYMENTS FOR THE YEAR (a6-b8)	(29,479)	7,533	(21,946)	(13,299)
c2	Total funds brought forward from last year	45,039	16,092	61,131 (c6)	74,430
c3	Sub-total (c1+c2)	15,560	23,625	39,185	61,131
c4	Transfers and adjustments	9,441	(9,441)	0 (c7)	
c5	TOTAL FUNDS AT END OF YEAR (c3+c4)	25,001	14,184	39,185 (c8)	61,131 (c6)

SECTION D			
FOR INFORMATION ONLY: MONEY RECEIVED AND PASSED ON TO EXTERNAL ORGANISATIONS			
d	(these amounts are not to be included in total receipts/payments figures above)	£	£
d1	Balance brought forward from last year	1,557	1,297
d2	Offerings/Gifts - received for external organisations	1,662	1,736
d3	Offerings/Gifts - passed to external organisations	2,921	1,477
d4	BALANCE STILL TO BE PAID	298	1,557

SUMMARY OF CHURCH ACCOUNTS AND INTERNAL ORGANISATIONS REPORTING TO THE CHURCH COUNCIL**SECTION E**

Please follow the Guidance Notes to complete this page

Summary of the Church accounts for the year ended 31 August 2019 and Internal Organisations reporting to the Church Council/Church Meeting. Note that the funds of an Internal Organisation would normally be Restricted funds unless it could be clearly shown that they could be used for any Methodist purpose. This section must be completed to arrive at the gross income and expenditure totals of the Church. If gross income exceeds the Accruals threshold, then the Accruals method of accounting AND A DIFFERENT FORM must be used to report the accounts (see Methodist website). Please refer to the guidance notes regarding transfers between the District and connected District Organisations.

INTERNAL ORGANISATIONS	Receipts	Payments	Net Receipts/ Payments	Adjustments	Opening balances	Closing balances
e1			0			0
e2			0			0
e3			0			0
e4			0			0
e5			0			0
e6			0			0
e7			0			0
e8 Sub total of Internal Organisations funds	0	0	0	0	0 (e11)	0 (e12)
e9 Church accounts (totals brought forward from page 2 - totals column)	110,868 (a7)	132,814 (b9)	(21,946)	(c7)	61,131 (c6)	39,185 (c8)
e10 TOTAL CASH FUNDS HELD BY CHURCH	110,868	132,814	(21,946)	0	61,131 (x)	39,185 (y)
Continue on a separate sheet if necessary and bring the totals forward	TOTAL RECEIPTS	TOTAL PAYMENTS				

SECTION F**STATEMENT OF ASSETS AND LIABILITIES****CHURCH - CASH FUNDS HELD at 31 August 2022**

	OPENING BALANCES	CLOSING BALANCES
f1 Cash in hand		
f2 Bank Current Account	60,871	38,925
f3 Bank Deposit Account		
f4 Central Finance Board	0	0
f5 Trustees for Methodist Church Purposes	260	260
f6 Other funds		
f7 SUB TOTAL - Church accounts	61,131 (c6)	39,185 (c8)
f8 Total funds held by Internal Organisations (the closing balance total from above) (e12)	0 (e11)	0 (e12)
f9 TOTAL CASH FUNDS HELD BY CHURCH	61,131 (x)	39,185 (y)

SECTION G**OTHER ASSETS and LIABILITIES**

	At 1 September 2023	At 31 August 2024
g1 Investments (include Endowments)		
g2 Land & Buildings (see notes re Insurance value)	4,126,368	4,250,156
g3 Other Assets		
g4 Loan(s) - show amount outstanding at year end		
g5 Other Liabilities		

f4 Include only Funds held at the Central Finance Board

f5 Include only Funds held at Trustees for Methodist Church Purposes

g1 Include any other investments (not the cash element of TMCP trusts accounts this is included in line f5)

Declaration and IE

Name of Church ACOMB METHODIST CHURCH No. 29/33

Declarations and Scrutiny

I confirm that these Receipt and Payment based accounts for the year to 31 August 2024 have been prepared from the records of the Church and that they include all funds under the control of the Church trustees.

Signature of treasurer [Signature] Date 16-10-2024

Name and address of treasurer ROBIN TAYLOR

9 OTTERWOOD BANK YORK Post Code YO24 3JS

Presentation to the Church trustees

I confirm that the annual report and accounts for the year ended 31 August 2024 were/will be* presented to the meeting of the Church trustees held on 17-10-2024

Signature of the Chair of the meeting [Signature]

Name of the Chair of the meeting JOHN TREVOR STUART HAYWARD Date 17/10/2024

Independent Examiner's Report to the Trustees of the

ACOMB METHODIST Church

Charity Number 1166757

Responsibilities and basis of report

I report to the trustees on my examination of the accounts of the ACOMB METHODIST Church for the year ended 31 August 2024 set out on pages 2 to 3. As the Church's trustees, you are responsible for the preparation of the accounts in accordance with the requirements of the Charities Act 2011 (the Act).

I report in respect of my examination of the Church's accounts carried out under section 145 of the Act and, in carrying out my examination, I have followed all the applicable Directions given by the Charity Commission under section 145(5)(b) of the Act.

if applicable, insert the name of the independent examiner

IE Statement

Name of Church ACOMB METHODIST CHURCH No

Independent Examiner's Statement

I have completed my examination. I confirm that no material matters have come to my attention in connection with the examination (~~other than that disclosed below~~*) which give me cause to believe that in, any material respect:

- the accounting records were not kept in accordance with section 130 of the Act; or
- the accounts do not accord with the accounting records.

I have no concerns and have come across no other matters in connection with the examination to which attention should be drawn in this report in order to enable a proper understanding of the accounts to be reached.

~~I have not obtained independent verification of all investments with the Trustees for Methodist~~
Church Purposes or held in other trusts, bank balances and funds at the Central Finance Board of the Methodist Church which are individually in excess of £10,000 (ten thousand pounds) at the balance sheet date.

~~Signature of independent examiner~~ E. E. Hannah

Name of independent examiner EILEEN ELIZABETH HANNAH

Relevant professional qualification of independent examiner RETIRED ACCOUNTS TEACHER

Name of firm (where appropriate)

Address 5 WANDHILL, HAXBY, YORK,

NORTH YORKSHIRE Post Code YO32 2FW

Date 16 - 10 - 2024

* delete or circle as appropriate