



Trustees' Report and Financial Statements

Year Ended 31 March 2024

Registered Charity Number: 1166057



Contents

	Page
Chairman's Message	3
Trustees' Report	4 - 26
Statement of Trustees' Responsibilities	27
Independent Examiner's Report to the Members	28
Statement of Financial Activities	29
Balance Sheet	30
Notes to the Accounts	31- 39

Chairman's Message

Introducing the LandWorks annual Trustees' Report always leaves me with mixed feelings.

Genuine pride in the LandWorks team who have once again worked so hard to achieve outstanding results - a record number of training days delivered, improved facilities and services offered to trainees and graduates alike, and consistently strong performance in reoffending and employment statistics. In July 2024, the team thoroughly deserved their recognition at The Charity Awards, winners not only in the Social Care, Advice and Support category but also the Overall Award of Excellence.

But alongside the pride, anger and despair as the Criminal Justice System slips inexorably backwards. The backlog in the courts is at an unprecedented high, with the Crown Court backlog increasing a further 10% last year, meaning that prisons are having to accommodate ever more prisoners on remand. Faced with a crisis in over-crowding, the Government introduced an early release scheme to free up space. Ill-considered and poorly executed, this may have freed up a few extra beds but at what cost? Too often simply tipping offenders out on to the street, ill-equipped and lacking skills to help them turn their lives around just makes things worse...for everyone, their victims, the community, the offenders and even the prison service itself when many of those released 60 days early often breached their license conditions and returned to prison to serve the rest of their sentences, likely to be six months or more.

As I noted in last year's message, in 2022/23 HM Inspectorate of Prisons rated no prisons whatsoever as "good" for the provision of rehabilitation and release planning. So, upon release, it is left to the Probation Service, doing its best whilst remaining chronically under-funded and short of fully trained and experienced staff, to try and steer these people away from a life of crime and towards a better future. Whilst there is now consensus that short term sentences achieve little and should be replaced by some form of



community sentencing, our fear must be that such a move would be implemented simply to reduce over-crowding without proper consideration of the significant investment that would be required into Probation and other support services to manage this shift in policy.

Successive Governments have failed the Prison and Probation Service not just through lack of investment but more importantly through a failure to understand that the best way to reduce the impact of crime and reoffending is to develop a robust system, both within prisons and in society at large, to offer the best chance for rehabilitation. The past 10 years has seen LandWorks develop a small but powerful example of what can be achieved. It is now time to take this further and, thanks to funding from some of our long term and generous donors, we will in 2025 launch a 2 year research and policy project entitled "Reimagining Rehabilitation and Resettlement", seeking to identify the key elements of the LandWorks model and how it can be most effectively replicated across the country.

A handwritten signature in black ink, appearing to read 'Ted Tuppen', with a long, sweeping horizontal line extending to the right.

Ted Tuppen CBE
Chair of Trustees

Trustees' Report

The trustees are pleased to present their annual trustees' report together with the financial statements of the charity for the year ended 31 March 2024. They are satisfied that the Financial Statements comply with the requirements of the Charities Act 2011, the governing document as described below and Accounting and Reporting by Charities: Statement of Recommended Practice applicable to charities preparing their accounts in accordance with the Financial Reporting Standard applicable in the UK and Republic of Ireland (FRS 102) - (Charities SORP (FRS 102)).

Objectives and Activities

The object of the charity as set out in its governing document is 'to develop the capacity and skills of the socially and economically disadvantaged community of offenders, ex-offenders, and those at risk of offending, in such a way that they are better able to identify and meet their needs, and to participate more fully in society.'

LandWorks delivers its charitable purpose by providing a supported route back into employment and the community for people leaving prison or at risk of going to prison (LandWorks trainees).

We have considered the Charity Commission guidance on public benefit and are confident that our activities and success in supporting trainees into employment and away from crime satisfies the criteria.

The charity's key aims are to:

1. Reduce reoffending
2. Improve individual wellbeing
3. Change attitudes towards people involved in the criminal justice system in wider society

In addition, we aim to continue to fund the project in the long term.

“ I think I now know who I am ... a general direction, you know....I know where I'm heading, and confidence, I'm definitely more confident... It's just been a very special place, and it's helped me more than I ever would've thought possible. Yeah, it's just really helped me find myself and that has beenthe only word I can think of is transformative it's just completely changed my life for the better. ”

Cassandra, PeN Project

Based on the Dartington Hall estate in South Devon, LandWorks supports the rehabilitation and resettlement of people either on license following release from local prisons or serving community sentences. We use the structure of a working day to develop skills and work intensively on a one-to-one basis with the trainees, building trusted relationships to help them develop a crime-free identity and transform their lives.

Trainees take part in three training enterprises on the site - a sustainably operated market garden, a woodwork shop, and a pottery studio - all offering produce for sale to the local community. As well as developing vocational skills, participation in these enterprises increases self-worth and encourages self-responsibility.



The working day at LandWorks includes the daily cooking of lunch for staff and trainees, using seasonal produce grown on site in the market garden. Lunch and tea breaks, when trainees can chat, cook and eat together with staff and visitors, are important times to strengthen feelings of belongingness and enhance social skills.

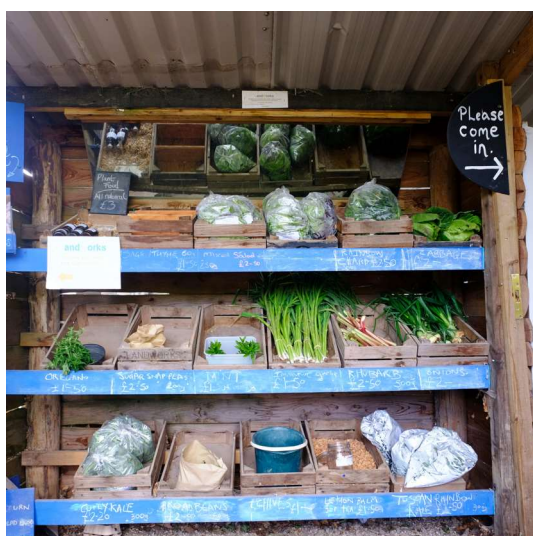
Alongside these daily activities, each trainee has an individual resettlement plan. We provide a range of support to address their needs including counselling, substance misuse sessions, and support with housing, finances, job seeking, health and wellbeing. Counselling sessions are delivered by our in-house psychotherapist and external specialists deliver tailored support on site as required.



Placement lengths at LandWorks vary depending on needs and circumstances, but on average they last for about six to nine months. Trainees attend the site for a full working-day, for up to five days a week. After trainees finish their placement, LandWorks provides an on-going programme of 'graduate' support, keeping in touch with its former trainees and providing advice, guidance, and support to further aid their resettlement and rehabilitation as and when needed.

Referral to LandWorks is through our partners in the probation, prison, police and health services. Currently, our trainees are based in the community, serving community sentences, suspended sentences or on licence following release from custody and are primarily referred to LandWorks through probation services. ROTL (day-release from prison on temporary licence) placements from our local prison HMP Channings Wood, which used to be a key LandWorks' source of referral, were suspended during the pandemic and have yet to be resumed.

LandWorks offers an intensive, prolonged, and bespoke approach, working comprehensively with some of the most socially excluded people in our communities.



LandWorks Guiding Principles

- **We work with people in prison or at risk of going to prison** who demonstrate and are assessed as wishing to change their lives and patterns of behaviour.
- **Every trainee at LandWorks is accepted as an individual**, addressing their differing and often complex issues. This is achieved by delivering person-centred and relational work with our trainees.
- **Building individual trusting relationships is a critical starting point for successful resettlement.**
- **LandWorks has a clear work ethic.** At its core is a structured workday where we build practical skills.
- **LandWorks believes in a standard of achievement** and we identify accomplishment as something to be proud of.
- **LandWorks allows people to develop a non-criminal identity**, developing a sense of hope and belief that change is possible and encouraging honesty and openness.
- **LandWorks offers longer term engagement and post-placement support.**
- **LandWorks is committed to being informed by evidence and learning from its experience**, including through evaluation, to continually improve and develop its delivery model and activities.

The annual evaluation of LandWorks undertaken by the University of Plymouth recognises that the combination of real work experience and training alongside comprehensive support in a highly nurturing environment is very distinct, if not unique. It outlines how the systematic 'Theory of Change' (ToC) model (see diagram on the next page), developed over years and adopted at LandWorks in 2022 as the core vision to manage the journeys of trainees and graduates, underpins the holistic service and support that we provide.

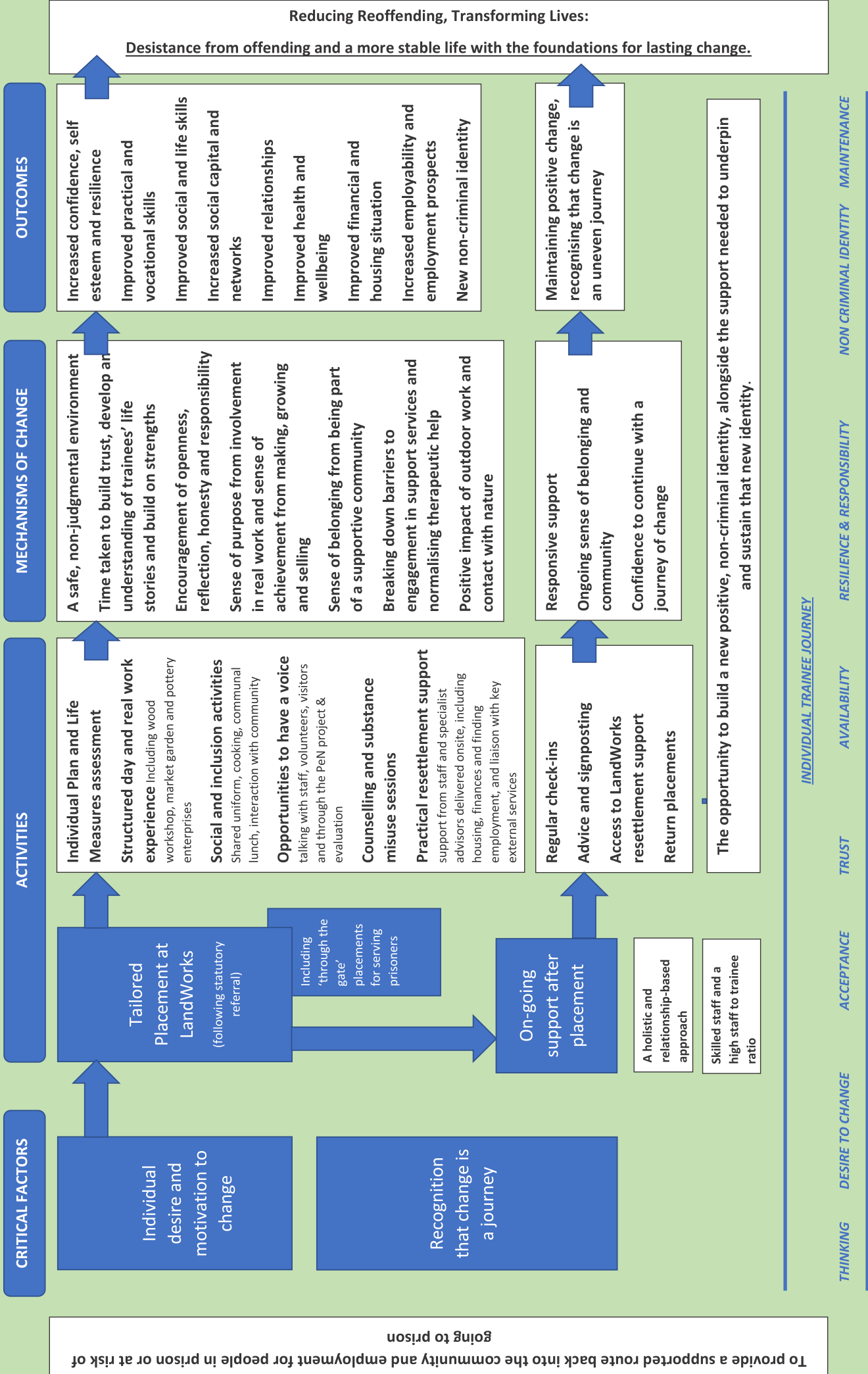
The 'ToC' is informed by desistance theory and research. Desistance is the term used by criminologists to describe and explain the challenges that offenders face and the processes that they navigate as they make the decision to cease offending.

We would like to acknowledge the use of evidence and many direct quotes from the University of Plymouth evaluation document in this annual report.

Gray, P. and Parson, J. (2024) LandWorks Evaluation. 1 April 2023 - 31 March 2024 "A 'desistance-supporting' community which offers 'living proof of active hope.'"

“The level of support you get here is overwhelming... It's hard to accept it at first. It's the calmness, the togetherness, you're in touch with nature.... We look after each other, grow our own food, look after ourselves, and I think, yeah, it brings you back to normality. It makes you want to be a better person...”

Marshall, PeN Project



To provide a supported route back into the community and employment for people in prison or at risk of going to prison

Raising awareness and influencing

Robust evidence and analysis Sharing information through a range of targeted communications channels Credibility from evidence and real world experience of the system Awareness raised and system improvements



How it Works

We help people like Sam...

After declaring on day one that he had never worked a day in his 40 years, Sam has now been in full-time employment for two years.

Join
LandWorks
6 month
placement

"LandWorks has helped me function normally again. Now I've got a purpose, I'm not sitting rotting."

Practical Skills

- Construction
- Woodworking
- Vegetable Growing
- Landscaping
- Art & Design

Gain/develop
skills

Life Skills

- Cooking
- Eating together
- Managing Money
- IT, Maths and English
- Paperwork

Counselling, and
drugs and alcohol
support (optional)

Building Self-Worth

- Social Skills
- Confidence

"If it wasn't for
LandWorks I'd be
back in prison,
without a shadow
of a doubt."



Organise
Housing and
Work

Back in control
of your life

Create Your
Action Plan

Help Securing
Accommodation

Review
Action Plan

Help Securing a Job
We are partners with
employers who accept
people with criminal
records

Partnerships
With probation,
employers, and
other support
organisations.

Continued
involvement with
LandWorks

A Time For Celebration

2023 marked the 10th anniversary of LandWorks, which was established in 2013 and became an independent charity in 2016. The 'Annual Supporters Day', which was held on the 14th of July, was used to celebrate this milestone anniversary and 275 supporters, volunteers and partners attended.

Professor Nick Hardwick, former Chair of the Parole Board and HM Chief Inspector of Prisons, who spoke at the event, commented that "at a time when the prison system is facing many challenges, Ministers should note that LandWorks provides one of the best examples in the country of how we can reduce reoffending, turn lives around and prevent future victims."

Over the past 10 years, LandWorks has provided over 200 participants with lifechanging placements that are individually tailored to tackle the root causes of their offending. LandWorks offers people a safe place to be vulnerable; a place to build trusting, non-judgemental relationships; a place to develop their skills and self-esteem; and above all, a chance to develop a non-criminal identity. 93.2% of former LandWorks trainees seeking employment are in work, and less than 6% go on to reoffend in their first year.

To commemorate and record the first 10 years of the charity, LandWorks published a book called 'Acceptance', which is available for purchase through the LandWorks shop and website. Acceptance combines a day-to-day narrative of the goings on at LandWorks with personal stories from trainees on placement, told in their own words to the PeN (Photographic electronic Narrative) Project. By sharing these first-hand experiences, LandWorks hopes to help change public perceptions of people in the criminal justice system and ease their reintegration back into the community.



“Over the last 10 years... we have built something at LandWorks, a physical place, somewhere that people feel safe, something wholesome that people feel, and still feel, part of and very proud of.”

Director's Blog, 20 July 2023

Achievements and Performance

The year in figures:

52 trainees supported over the year, all based in the community. This included 30 new registrations. 32 people were on licence and 20 serving community sentences. There were 47 men and 5 women.

151 LandWorks graduates provided with support or advice over the year. At any one time during the year, we have been providing support to around 12 graduates at higher levels of need

1661 training days provided at LandWorks in 2023-24, against a target of 1600

225 trainees have attended LandWorks from when it was first established in 2013 until the end of March 2024

183 one-to-one counselling sessions with trainees and graduates delivered by our in-house psychotherapist across the year

356 one-to-one resettlement support sessions

5.35% the one-year reoffending rate for LandWorks trainees. This compares to a national reoffending rate within one year of 37.8% for adult offenders released from prison or 32.8% following a community court order (Ministry of Justice, 2024)

93.2% of all LandWorks graduates available to work who were in employment at the end of the year. For all adults leaving prison only 26% are in employment within six months of release (Prison Reform Trust, 2024).

>1200 registered LandWorks supporters

3 average number of visitors from the community and partner agencies joining us each week for lunch with trainees and staff

£236 the total cost per training day delivered at LandWorks, reduced to £196 net of income generated from our commercial operations



“ I need routine in my life, and you know, things to do every day, and this place is really helping me to get back into normal living. It really is and I've heard a lot of people that have been here, they seem to do quite well when they leave. They go back into work or education or whatever and you know, the people that stick at it do well don't they. ”

Anthony, PeN Project

“ I love doing [the market garden], I love organising stuff, I have control and I'm on me own..... I didn't know nothing about plants and now I'm banging on about plants and soil every bloody day, doing a regenerative farming course from the RHS. So yeah, it's really come a long way. ”

Eric, PeN Project



Building on 10 years of success, LandWorks supported its highest ever number of trainees in the year to March 31, 2024.

This year we provided 52 trainee placements (of which 30 are new) and 1,661 training days. Most trainees (61.5 %) are on license from prison while 38.5 % are on community sentences. LandWorks continues to maintain constructive partnerships with our main sources of referral in the prison and probation services. Much work has been conducted this year 'building a bigger presence' in local prisons such as HMPs Dartmoor, Exeter and Channings Wood. Similarly links with the probation service have also been strengthened given their pivotal role in the referral process.

LandWorks places great emphasis on providing ongoing support to our trainees once they have completed their placements, tailored to the individual needs of graduates. Over the year we have been in contact with 151 graduates, and at any one time we have been providing support and advice to around 12 graduates at higher levels of need at any one time.

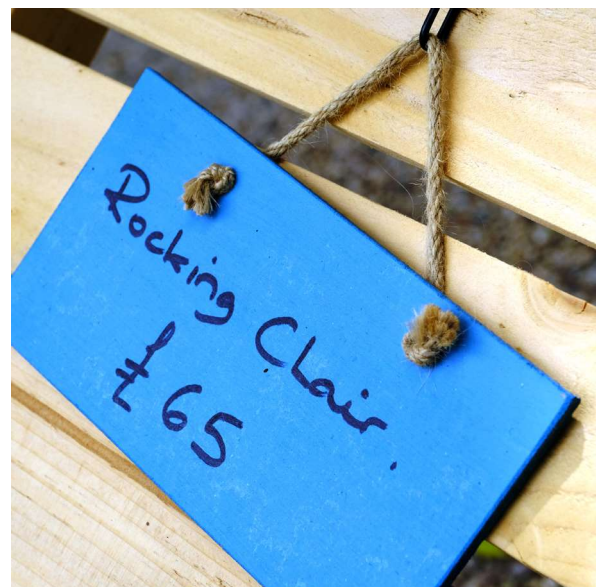
We have made significant improvements to our site and facilities, increasing the number of raised beds to accommodate more produce in the market garden and replacing petrol-driven ground maintenance machinery with more sustainable and user-friendly electric tools. We have also integrated cooking and food skills more extensively into the project, under the guidance of Mikey, a former trainee and professional chef who joined the team in January 2024.

Over the year LandWorks has continued to build and strengthen its resettlement support provision. Most of this support during this year was provided internally, following the appointment of a full-time Resettlement Manager in June 2022. This meant that assistance with resettlement (in such areas as housing, benefits, and general advocacy) could be provided reactively and swiftly particularly in crisis situations, rather than waiting for referral to outside agencies and allowing issues to escalate further. In March 2024, the Resettlement Manager resigned for personal reasons. LandWorks used this as an opportunity to review the role and make changes. (See 'Challenges and Learning', page 22).

The evaluation report for the year 2023-24, produced by the University of Plymouth, recognises LandWorks critical role in providing a 'desistance-supporting' community which offers 'living proof of active hope'. The report sheds light on the very troubled backstories and chaotic lives of most trainees and provides powerful feedback from trainees and graduates about the impact of the support that has been provided.

The report also highlights the fact that, despite the challenges they have faced, the level of reoffending amongst LandWorks trainees and graduates has remained low at 5.35% and the vast majority of graduates (93.2%) seeking work continue to be in at least part-time employment.

We are hugely grateful for the continuing support that we received over the last year. We are only able to keep going due to our funders, supporters, volunteers, and partners.



Research, Raising Awareness and Influencing

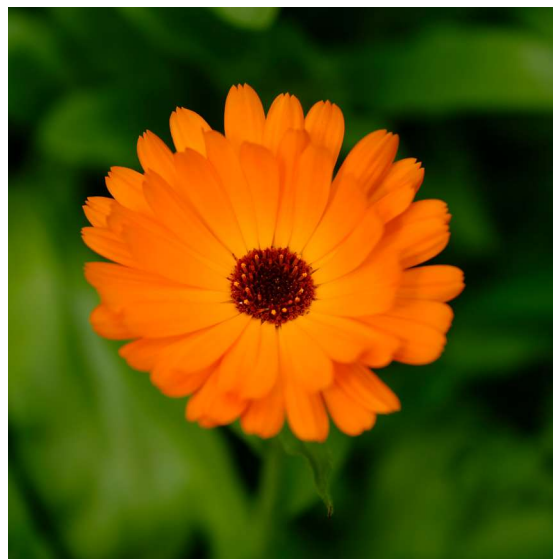
LandWorks is committed to using its experience to engage the wider community in the issues of resettlement and rehabilitation and to inform and influence public debate about the criminal justice system. This is achieved through the collation of robust evidence and analysis, and sharing information through a range of targeted communications, with the aim of improving resettlement and criminal justice processes and systems.

In 2023/24 the charity:

- Distributed fortnightly blog posts about project news and wider criminal justice issues to our group of over 1,300 registered supporters and through our social media channels
- Welcomed 275 visitors to our 10th Anniversary Supporters Day in July 2023, including our local MP Anthony Mangnall and Professor Nick Hardwick, former Chair of the Parole Board and HM Chief Inspector of Prisons.
- Published [Acceptance](#), a book telling the inside story of LandWorks through the eyes of our Project Director, trainees and graduates. Acceptance shines vital light on the difficult and complex lives of people in the justice system, the challenges of rehabilitation, and the potential for change in every trainee.
- Hosted approximately three visitors per week to lunch at LandWorks as an exercise in raising awareness and creating social networks for trainees and graduates. Visitors included partners, external agencies, magistrates and members of the community.
- Received 6 new prison officers and 4 police trainees for placements during their training
- Continued to support the PeN Project (independently funded by the Independent Social Research Foundation), which gives a unique voice to those caught up in the criminal justice system, while offering the community a window into the lives and experiences of trainees as LandWorks. A record 20 blogs were posted over the course of the year.



- Made a submission to the Public Accounts Committee inquiry into 'Improving Resettlement Support for Prison Leavers' in May 2023.
- Published our latest evaluation report in partnership with the University of Plymouth in November 2023.
- Shared our vision for a more effective resettlement process at the American Society of Criminology Conference which PeN Project lead Dr Julie Parsons attended for the first time in November 2023.
- Partnered with the University of Plymouth to deliver a unique new criminology and sociology degree module at LandWorks called Inside Knowledge: Crime and Justice in the 21st Century.
- Won 'Best Longform Film' (charities with an income of under £1 million) at the 2024 Smiley Charity Film Awards for 'One Day', a powerful short film on a day in the life at LandWorks, filmed and produced by supporter Jennie and Graeme Montgomery. The film also won a Gold Award at the 2024 Spotlight Documentary Film Awards and the 'Human Rights Award' at the Canberra International Mental Health Film Festival.
- Secured an insightful article in South Hams Newspapers, headlined 'The South Hams Charity Transforming Lives', following a visit by journalist Richard Torne.
- Further developed our use of social media, significantly increasing the number of Facebook, X (Twitter) and Instagram followers over the year. This has had a positive impact on sales within our field gate shop.



Fundraising

Despite the challenging economic environment, we had another successful fundraising year. We are hugely grateful to all the individual donors who continue to support the charity, and especially as we know that this has been a difficult financial period for many people. We would like to thank also all our grant funders who provided income to LandWorks over the last year, including the following that provided over £10,000 each:

- The Aurum Charitable Trust
- The Considered Ask
- The Sir Halley Stewart Trust
- The Henry Smith Charity
- The National Lottery Community Fund
 - RC Southwest Region
- The Prism Charitable Trust

Finally, we would like to thank all our customers who bought items from our market garden, pottery, and wood workshop. All proceeds from the sales directly support the charity. Alongside the important income generated, the shop provides a real sense of purpose and achievement for trainees from making, growing, and selling produce.

“ Being in the market gardens, when you've spent all your time ... you know, growing plants and fruit and veg is a lengthy period, a lengthy thing, but you grow it, then you put it in the bags, you've done all the job and in here, you know, the customers come, wanting more of it, you know, and they're really praising your salads..... it's really rewarding to see that. ”

Eric, Inside Knowledge Focus Group



Trainee Voices

Research clearly indicates that the key to successful outcomes (such as reduction in reoffending) in the resettlement process is the quality of the relationship between service providers and trainees.

LandWorks supported 52 trainees in 2023/24, most of whom had severely chaotic lives and multiple needs resulting from adverse childhood experiences, social deprivation and exclusion, violence, homelessness, substance abuse, depression and mental illness.

Interviews with the trainees and graduates, undertaken over the year as part of the PeN Project, identified what it is about LandWorks' 'desistance supporting' environment that motivates trainees and graduates to engage with change and develop a crime-free identity. (The full stories can be found at penprojectlandworks.org) Three core themes were identified:

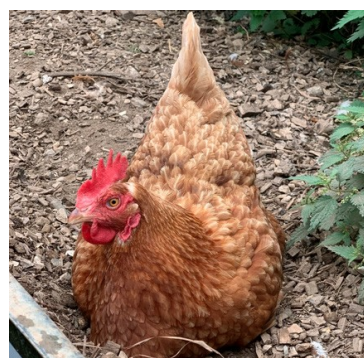
First, LandWorks' person-centred approach was highly rated by its trainees and graduates. Relationships were seen as being based on trust, honesty and respect, and embedded in a non-judgmental culture of acceptance.



“ I just liked the trust side of it because I'd been in prison... We were using plastic knives and forks, plastic bowls, plastic cups, plastic everything....So, to come out and then... you know, you start building something and you're just given everything that you need, from a Stanley knife to a saw and that, and nobody's like even questioning it. I found that quite bizarre, but I really liked the trust side of it and that people took me on face value from that day.... The trust was huge for me.

”

John, PeN Project



“ You treat everyone with respect... everyone understands the principle, you want respect, you treat other people with respect... No-one's further down than anyone else, everyone's equal, which is what I like. That's probably built my confidence the most. It's the people, the people are very nice...

”

Dave, PeN Project

Trainees and graduates also commended the way the LandWorks project is designed and delivered. Unlike the chaos of their earlier lives, LandWorks offered an oasis of calm and stability where work was meaningful and structured, and they felt part of a warm and welcoming community. This helped them to build self-esteem and feelings of purposeful achievement. Trainees and graduates also appreciated the practical resettlement support, co-ordinated and tailored to their individual needs.



“ I really like it here. I've learnt a lot... the workshop is the place I enjoy the most. I love working with wood, doing different things. I learnt to use different machinery. It's gives me a purpose, a challenge to do things...I'm more productive in the workshop than anywhere else. I get a kick out of being given a bunch of tasks to do and accomplishing everything by the end of the day...

”

Shadar, PeN Project



“ I love the fact that we all sit around one table and like we all have discussions and talks about different things ... just like the general chatter chatter and everyone's banter, it's lovely. It's gives you that little like lift, you know, positive thoughts and things like that, which is really good...Everyone's happy to help everyone, which is nice, you know, and if anyone's struggling with anything, there's always somebody there that's willing to help.

”

David, PeN Project

Finally, LandWorks gave trainees and graduates the **active hope and confidence that they could rebuild their lives** and overcome any obstacles on their desistance journey to achieve and sustain a non-criminal identity.



“ I thought my life had failed. I was gonna be in and out of trouble all my life. No-one ever wanted to employ me like.....I never had ambitions, but now this place has given me ambition, make me want to better my life and see where I can take my life, but it's in my hands. This is what this place has done for me as well, realising that my life is in my hands. I can make the path for myself.”

JimBob, PeN Project



“ My life's so much more sorted out in the months I've been coming here It's made me come on leaps and bounds...in every aspect... It helped me with my financial matters, helped me with like family problems, anything that worries me, I've got someone to talk to... I just think it's a brilliant place to come to. Like I say, it's a safe place, you get the help and support...I never thought I'd ever get back into work, but I know I'm gonna finish here eventually and I'm 100% I'm either gonna be doing voluntary work or something that I enjoy, that I really wanna do.”

Amelia, PeN Project

Graduate Support

A 'graduate' is a trainee who has finished their placement at LandWorks and is living in the community. In 2023/24 LandWorks was in contact with 151 of its 204 (74%) graduates.

Stopping offending and adopting a non-criminal identity can be a long and arduous journey with many potential pitfalls along the way. LandWorks therefore places significant emphasis on keeping in touch with trainees after placement by providing on-going, tailored support.

LandWorks uses a 'traffic light' alert system to assess the needs of its graduates and the urgency with which they must be dealt with. 'Green' signifies that the graduate is progressing well and simply needs a 'listening ear'. 'Amber' means that the graduate may be facing some difficulties that have the potential to worsen if not swiftly addressed. If a graduate is experiencing severe difficulties or in a state of crisis then a 'Red' alert will be flagged up, signifying the need for urgent assistance and possibly even a return placement.

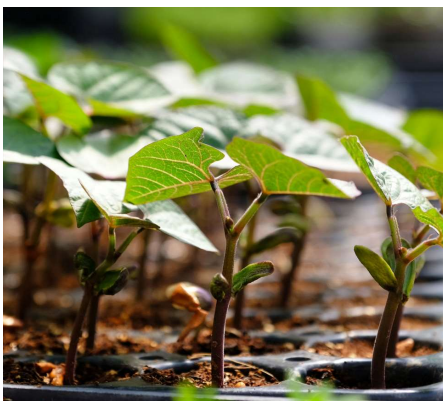
'Red' alerts are rare (4% in 2023/24) and the percentage of offenders in the 'Green' category has been steadily rising over the last three years, possibly reflecting that the lives of graduates have been more stable post pandemic.

The resettlement journey

Graduate support is tailored to individual needs and includes help with housing, mental health, employment, and benefits, as well as being a listening ear. In the PeN and Focus Group interviews undertaken during 2023/24, LandWorks graduates and trainees spoke about the practical, responsive and co-ordinated support they receive:

“ There's all good support here for whatever your problems are, you know, whether you need to find a dentist or somewhere to live, there's someone here to help, which is like probably the best thing. ”

Stef, PeN Project



Being able to drop in and talk to staff, and having access to LandWorks psychotherapist, helps to alleviate the pressure and anxiety surrounding their resettlement journey. Of those graduates having counselling, on average they have eight individual sessions.

“ I had so much shit going on in my head....[The LandWorks counsellor] gave me some brilliant tools to walk away with and deal with difficult people because that was my problem with difficult people...idiots I would call them, fucking morons. But yeah, it's just giving you tools to be like right, let's take a step back before you get angry, do this, do that.

”

Eric, PeN Project

A key goal of LandWorks is to find employment for its graduates as research shows that having a job is a crucial factor in successful resettlement. In 2023/24, the employment rate for economically active graduates was 93.2% and this figure has remained constant over the last three years. In comparison, national statistics indicate that only 26% of people are in employment six months after leaving prison. (Prison Reform Trust, 2024).

“ I think this place opened up opportunities where you might have loads of doors closed in your face all your life and this place can actually open them doors back up for you and that is just really, really beneficial on so many levels.

”

JimBob, PeN Project

Graduates also spoke about the strong feelings of 'belonging' they maintain towards LandWorks, even after their placement has ended.

“ Even to this day I still see this place as a safe haven. It's almost like the family I never had ...it was like it was one big family. If I felt stressed, I always left here with a smile... just no weight on my shoulders at all. Even now I wonder if I hadn't come here how different would life be... I'm still coming out here after eight years. If you said like 10 years ago, would I still be here...no, don't be stupid, I've done it, I'm finished, that's it, end of ... but no, I love coming out here still.”

”

Charlie, PeN Project

'Living proof of active hope'

During 2023/24, the PeN and focus group interviews included the voices of three LandWorks graduates who have now become part of the staff team. Their personal lived experience of the desistance process offers trainees and other graduates "living proof of active hope" (Mabel, Trainee) that change is possible and instils a desire to help others undergoing similar experiences:

“...new trainees will come through the gate...and I think them seeing someone here that has been through the stuff, knows what they're doing, and not only have I just been through the Criminal Justice System, I've also been through the process here of being a trainee and everything. So, I've got like two levels of support I can help them with... I think that really goes a long way too.”

Eric, Graduate Focus Group

“I think it gives you that empathetic view on ... not that you know what they're going through, but you have an understanding, you have a really good understanding. Yeah, empathy innit, you have that understanding of somebody else's needs because you've been through that.”

John, Graduate Focus Group



“I got into a bit of a pickle whilst I was an addict...and then I started dealing drugs and then yeah, got caught... Considering where I was many years ago and to where I am now... I'd like to help people with drug and alcohol services at some point ... 100%, because it's had such a bad effect on my life, I wanna help others”

Marshall, Graduate Focus Group

Challenges & Learning

Whilst LandWorks had much to celebrate in 2023/24, not least marking its 10th anniversary, it did so in the face of significant and ongoing challenges within the criminal justice system.

Research shows that high quality probation supervision that is underpinned by secure, consistent and trusting relationships does reduce offending (HM Inspectorate of Probation). However, research also shows that people on release from prison or on community sentences are not experiencing these types of relationships from statutory and third sector agencies. In the aftermath of the pandemic, most have been overstretched and working under extreme pressure, fuelled by shortages of staff and resources which have resulted in large service backlogs and long waiting lists (Prison Reform Trust, 2024).

Over the last year LandWorks has continued to build and strengthen its resettlement support to fill gaps in provision. Most of this support is now provided internally (as can be seen from the statistics in Table 1) following the appointment of a full-time Resettlement Manager in June 2022. Offering a broad range of practical, financial, social and psychological support at one location helps break down barriers to engagement; and having a Resettlement Manager permanently on site has allowed for a more co-ordinated and pro-active response to trainees whose needs at times of crisis can't be met by external agencies with huge backlogs and long waiting lists.

Following the resignation of the Resettlement Manager in March 2024 we reviewed the role and made changes. It was decided that resettlement support entails two quite distinct roles; that is, therapeutic support skills and practical knowledge of the current welfare, housing and benefits systems. In June 2024 a Health and Wellbeing lead was appointed to fulfil the first role. At the time of writing this report, the remit of the second role was still under consideration. However, it is likely that the role will be taken up by an external organisation on a contractual/partnership part-time basis, but still located at LandWorks.



For trainees and graduates suffering from the effects of complex trauma, the provision of individual counselling on-site by a qualified psychotherapist remains fundamental to our service offering, helping to unlock hidden trauma and enable personal responsibility. This was reinforced in an interview with the in-house part-time psychotherapist undertaken for this year's evaluation. We believe the provision of counselling as part of a 'comprehensive support hub' model has potential lessons for the wider criminal justice system.

The PeN project continues to be a significant source of data documenting the success of the LandWorks approach to resettlement, and a valuable tool for raising awareness of the needs and problems faced by its trainees and graduates. This year with support from the University of Plymouth and some external funding, the research team interviewed or had conversations with a trainee or graduate at LandWorks roughly every week. It has become apparent that this opportunity for people to share their stories is important; it is what is referred to by criminologists as 'bearing witness to desistance'. This is significant for showing family as well as the wider community how you've changed and are doing good.

One of the, perhaps unexpected, highlights of the year was partnering with the University of Plymouth to deliver a unique new criminology and sociology degree module called Inside Knowledge: Crime and Justice in the 21st Century. During February 2023, students visited LandWorks every Friday as part of the intensive six-week module to learn alongside people with lived experience of the criminal justice system. The module provided a powerful learning experience not just for the students but also for the LandWorks staff, trainees and graduates involved.



Table 1: Trainee Counselling and Resettlement Support

	2021/22	2022/23	2023/24
In-house Resettlement Sessions (one-to-one)	198	310	356
In-house psychotherapist sessions (one-to-one)	87	122	183

Financial Review

In the current economic environment, fundraising continues to be challenging and we are therefore pleased to report a favourable outcome for the year with total income of £392,220 (2023: £421,410). Total expenditure was £395,817 (2023: £368,281) resulting in a net decrease in funds of £3,597, reflecting a net decrease in restricted funds of £34,853 and a net increase to unrestricted funds of £31,256 before transfers. The total level of reserves held on 31 March 2024 was £364,034 (2023: £367,631).

It is the trustees' assessment that the charity is a going concern given the future grant funding already secured, the continuing strength of its earned income generation, and the level of its unrestricted reserves.

Reserves Policy

The trustees' reserves policy is to build reserves equal to a minimum of six months and maximum of twelve months running costs to protect the continuity of the project against fluctuations in income. The unrestricted reserves for the year ended 31 March 2024 were £318,651 (including fixed assets of £7,707), equal to between nine and ten months' running costs.



Our Team

LandWorks is staffed by people well qualified to deliver its objectives. The Project Director is supported by an experienced board of trustees who provide strategic direction, and a team of nine other salaried staff with specific responsibilities.

As was reported last year, the Charity Manager has been on long term sick leave since June 2022. The Project Director had already redistributed his role to other members of the staff team and filled any gaps with ad hoc paid specialists. However, over the last year the Charity Manager has been doing a phased return to work and is now actively engaged part-time in charity governance, fundraising and influencing policy activities.

Following the resignation of the Resettlement Manager in March 2024 we reviewed the role and made changes creating two quite distinct roles covering therapeutic support skills and practical knowledge of the current welfare, housing and benefits systems. The outcome of these changes will be evaluated in next year's report.

There are now three graduates working as members of the staff team, namely our woodworking lead, chef and a horticultural trainee. This has been widely supported by all participants in the LandWorks project from trainees to staff as it adds a valuable component to the working environment. Graduate-staff have 'lived' insight and experience of the criminal justice system, the 'ups and downs' of the desistance process and the realities of resettlement. They are also seen as inspirational, offering trainees and other graduates 'living proof and active hope' that change is achievable.

During the year a new Arts lead was appointed to build arts and crafts activities. A new Chef is also now in post who is a LandWorks graduate. He is an advocate of 'healthy eating', making use of LandWorks' garden produce and keen to develop the culinary skills of trainees.

In 2023 LandWorks provided a market gardening apprenticeship to one of its trainees, leading to Royal Horticultural Society level 2 and 3 qualifications. Now a graduate of the LandWorks programme he has joined the staff team as a Market Garden Assistant and is attending a course one day a week on regenerative farming and growing.



Recruitment & Training of Trustees

Any new trustees are appointed by the existing trustees. Prospective trustees have the opportunity to meet with the Chair and other trustees and to speak with the Project Director, and they are provided with background information about the charity. Following appointment, all new trustees are provided with a copy of the Charity Commission guidelines 'The Essential Trustee', as well as the charity's constitution, the LandWorks Handbook and recent annual reports and financial statements. New trustees are encouraged to visit the site and meet with staff and trainees. They all complete Safeguarding adults training.

Structure, Governance & Management

LandWorks is constituted as a Charitable Incorporated Organisation (CIO), registered as a charity on 15 March 2016. The charity has a governing constitution registered with the Charity Commission. The governing document was amended in September 2020 in order to allow trustees to serve up to three, rather than two, consecutive terms of office.

Trustees meet a minimum of three times a year. All trustees give their time voluntarily and receive no benefits from the charity.

Reference & Administrative Details

Registered charity name LandWorks

Charity number 1166057

Principal address
Quarry Field
Dartington Hall
Totnes
Devon
TQ9 6EA

Charity trustees
Graham Edward Tuppen CBE (Chair)
Sally Benthall
Sarah Hocking (from 8th November 2023)
Jason Kew
Dr Aroop Mozumder (from 18th July 2023)
Dr Sarah Wollaston

Independent examiner
Neil Hitchings FCA
Francis Clark LLP
Centenary House
Peninsula Park
Rydon Lane
Exeter
EX2 7XE

Charity staff
During 2023-2024:
Chris Parsons (Project Director)
Daniela Chivers (Project Co-ordinator)
Gill Hearnshaw (Project Office) until July 2023
Graham Stone (Woodwork)
Elli Targett (Resettlement Manager)
Lucy Bell (Pottery Lead) until December 2023
Monika Krol (Market Gardener)
Steve Bradford (Charity Manager)
Steven Wellington (Site Maintenance)
Djamila Vogelsperger (Chef) until December 2023
Michael Francis (Chef) from January 2024

Statement of Trustees' Responsibilities

The trustees of LandWorks (CIO) are responsible for preparing the Trustees' Report and the financial statements in accordance with the United Kingdom Accounting Standards (United Kingdom Generally Accepted Accounting Practice) and applicable law and regulations.

The law applicable to charities in England and Wales require the trustees to prepare financial statements for each financial year which give a true and fair view of the state of affairs of the charity and of the incoming resources and application of resources of the charity for that period. In preparing these financial statements, the trustees are required to:

- select suitable accounting policies and apply them consistently;
- observe the methods and principles in the Charities SORP;
- make judgements and estimates that are reasonable and prudent;
- state whether applicable UK Accounting Standards have been followed, subject to any material departures disclosed and explained in the financial statements; and
- prepare the financial statements on the going concern basis unless it is inappropriate to presume that the charity will continue in business.

The trustees are responsible for keeping adequate accounting records that are sufficient to show and explain the charity's transactions and disclose with reasonable accuracy at any time the financial position of the charity and enable them to ensure that the financial statements comply with the Charities Act 2011, the Charity (Accounts and Reports) Regulations 2008 and the provisions of the trust deed. They are also responsible for safeguarding the assets of the charity and hence for taking reasonable steps for the prevention and detection of fraud and other irregularities.

The Trustees Report was approved by the Trustees and signed on their behalf by



Graham Edward (Ted) Tuppen CBE
Chair of Trustees
16th January 2025

Independent Examiner's Report to the Trustees of LandWorks

Year ended 31 March 2024

I report to the trustees on my examination of the accounts of LandWorks (the charity) for the year ended 31 March 2024.

Responsibilities and basis of report

As the trustees of the charity you are responsible for the preparation of the accounts in accordance with the requirements of the Charities Act 2011 ('the 2011 Act').

I report in respect of my examination of the charity's accounts carried out under section 145 of the 2011 Act and in carrying out my examination I have followed all the applicable Directions given by the Charity Commissioner under section 145(5)(b) of the 2011 Act.

Independent examiner's statement

Since the charity's gross income exceeded £250,000 your examiner must be a member of a body listed in section 145 of the 2011 Act. I confirm that I am qualified to undertake the examination because I am a member of The Institute of Chartered Accountants in England and Wales, which is one of the listed bodies.

I have completed my examination. I confirm that no material matters have come to my attention in connection with the examination giving me cause to believe that in any material respect:

- (1) accounting records were not kept in respect of the Trust as required by section 130 of the Act; or
- (2) the accounts do not accord with those records; or
- (3) the accounts do not comply with the applicable requirements concerning the form and content of accounts set out in the Charities (Accounts and Reports) Regulations 2008 other than any requirement that the accounts give a 'true and fair view' which is not a matter considered as part of an independent examination.

I have no concerns and have come across no other matters in connection with the examination to which attention should be drawn in this report in order to enable a proper understanding of the accounts to be reached.



Neil Hitchings FCA
Francis Clark LLP
Chartered Accountants
Centenary House
Peninsula Park
Rydon Lane
Exeter
EX2 7XE

Date: 20 January 2024

Statement of Financial Activities

Year ended 31 March 2024

	Note	Unrestricted Funds	Restricted Funds	Total year ended 31 March 2024	Total year ended 31 March 2023
Income:		£	£	£	£
Donations and Legacies	2	251,707	71,863	323,570	358,505
Investment income	3	1,543	-	1,543	810
Charitable activities	4	61,868	-	61,868	61,595
Other trading activities		5,239	-	5,239	500
		<u> </u>	<u> </u>	<u> </u>	<u> </u>
Total Income		320,357	71,863	392,220	421,410
		<u> </u>	<u> </u>	<u> </u>	<u> </u>
Expenditure:					
Charitable activities	5	289,101	106,716	395,817	368,281
		<u> </u>	<u> </u>	<u> </u>	<u> </u>
Total Expenditure		289,101	106,716	395,817	368,281
		<u> </u>	<u> </u>	<u> </u>	<u> </u>
Net income/(expenditure)		31,256	(34,853)	(3,597)	53,129
Transfers between funds		-	-	-	-
		<u> </u>	<u> </u>	<u> </u>	<u> </u>
Net movement in funds		31,256	(34,853)	(3,597)	53,129
		<u> </u>	<u> </u>	<u> </u>	<u> </u>
Reconciliation of Funds:					
Total funds brought forward		287,395	80,236	367,631	314,502
		<u> </u>	<u> </u>	<u> </u>	<u> </u>
Total Funds carried forward		318,651	45,383	364,034	367,631
		<u> </u>	<u> </u>	<u> </u>	<u> </u>

The statement of financial activities includes all gains and losses recognised in the year. All income and expenditure derive from continuing activities.

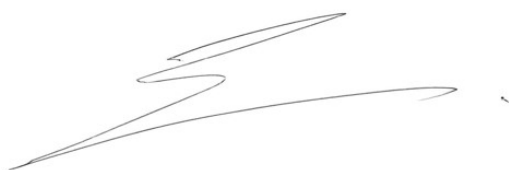
Balance Sheet

As at 31 March 2024

	Note	2024	2023
		£	£
Fixed assets			
Tangible assets	8	7,707	2,719
Current assets			
Debtors	9	16,167	46,092
Cash at bank and in hand		357,698	328,763
Total current assets		373,865	374,855
Liabilities			
Creditors due within one year	10	(17,538)	(9,943)
Net current assets		356,327	364,912
Net Assets		364,034	367,631
The funds of the charity			
Unrestricted funds	11	318,651	287,395
Restricted funds	11	45,383	80,236
Total Charity Funds		364,034	367,631

The notes on pages 31 to 39 form an integral part of these accounts.

These financial statements were approved by the Board of Trustees.



Graham Edward (Ted) Tuppen CBE
Chair of Trustees
16th January 2025

Registered Charity Number: 1166057

Notes to the accounts

Year ended 31 March 2024

1. Accounting Policies

The principle accounting policies adopted, judgements and key sources of estimation uncertainty in the preparation of the financial statements are as follows:

(a) Basis of preparation

The financial statements have been prepared in accordance with 'Accounting and Reporting by Charities: Statement of Recommended Practice' applicable to charities preparing their accounts in accordance with the Financial Reporting Standard applicable in the UK and Republic of Ireland (FRS 102) - the Charities SORP (FRS 102), the Financial Reporting Standard applicable in the UK and Republic of Ireland (FRS 102).

The financial statements have been prepared to give a 'true and fair' view and have departed from the Charities (Accounts and Reports) regulations 2008 only to the extent required to provide a 'true and fair view'. This departure has involved following Accounting and Reporting by Charities preparing their accounts in accordance with the Financial Reporting Standard applicable in the UK and Republic of Ireland (FRS102) rather than the Accounting and Reporting by Charities: Statement of Recommended Practice effective from 1 April 2005 which has been withdrawn.

The charity meets the definition of a public entity under FRS102. Assets and liabilities are initially recognised at historical cost or transaction value unless otherwise stated in the relevant accounting policy note(s).

The organisation is a Charitable Incorporated Organisation (CIO) registered in England and Wales on 15 March 2016.

The functional currency of LandWorks CIO is considered to be pounds sterling because it is the currency of the primary economic environment in which the charity operates.

The charity reported an unrestricted surplus for the year of £31,256 (2023: unrestricted deficit £9,081) and has already secured a significant amount of funding for the coming year. The trustees are of the view that the immediate future of the charity for the next 12 to 18 months is secure and that on this basis the charity is a going concern.

(b) Funds

Unrestricted funds are available to spend on activities that further any of the purposes of the charity. Restricted funds are donations which the donor has specified are to be solely used for the particular areas of the charity's work for specific projects being undertaken by the charity.

(c) Income

Receipts are included in the Statement of Financial Activities (SOFA) when: the charity becomes entitled to the resources; it is probable they will receive the resources; and monetary value can be measured with sufficient reliability.

Income from government and other grants (including multi-year grants), whether 'capital' grants or 'revenue' grants, is recognised when the charity has entitlement to the funds, any performance conditions attached to the grants have been met, it is probable that the income will be received and the amount can be measured reliably and is not deferred.

(d) Investment income

Interest on funds held on deposit is included when receivable and the amount can be measured reliably by the charity; this is normally upon notification of the interest paid or payable by the bank.

(e) Expenditure and irrecoverable VAT

Expenditure is recognised once there is a legal or constructive obligation to make a payment to a third party, it is probable that settlement will be required and the amount of the obligation can be measured reliably. Expenditure is classified under the following activity headings: Expenditure on charitable activities includes the direct cost of work with service users and other activities undertaken to further the purposes of the charity and their associated support costs. Other expenditure represents those items not falling into any other heading.

Irrecoverable VAT is charged as a cost against the activity for which the expenditure was incurred.

(f) Allocation of support costs

Support costs are those functions that assist the work of the charity but do not directly undertake charitable activities. Support costs include back office costs, finance, personnel, payroll and governance costs which support the charities work and activities. These costs have been allocated to expenditure on charitable activities.

(g) Tangible fixed assets and depreciation

Individual fixed assets costing £2,000 or more are capitalised at cost and are depreciated over their estimated useful economic lives on a straight line basis as follows:

- Leasehold improvements - Straight line over the life of the lease
- Furniture and equipment – 50% on a straight line basis
- Plant, machinery and motor vehicles – 20% on a straight line basis

(i) Taxation

The charity is not registered for Value Added Tax, and the cost of irrecoverable VAT is therefore included within the relevant expenditure headings

(j) Financial instruments

LandWorks only has financial assets and financial liabilities of a kind that qualify as basic financial instruments. The charity currently holds:

- Trade and other debtors and trade and other creditors.

2. Donations and Legacies

	2024	2023
	£	£
Donations and gifts	69,523	75,713
Gift Aid	5,658	14,445
General grants provided by government/other charities	248,389	268,347
	<u>323,570</u>	<u>358,505</u>
	<u><u>323,570</u></u>	<u><u>358,505</u></u>

The income from donations and legacies was £323,570 (2023: £358,505) of which £251,707 was unrestricted (2023: £278,755) and £71,863 restricted (2023: £79,750).

3. Investment Income

	2024	2023
	£	£
Bank Interest	1,543	810
	<u>1,543</u>	<u>810</u>
	<u><u>1,543</u></u>	<u><u>810</u></u>

The income from investments was £1,543 (2023: £810) of which £1,543 was unrestricted (2023: £810) and £nil restricted (2023: £nil).

4. Income from Charitable Activities

	2024	2023
	£	£
Wood workshop income	35,347	35,157
Market garden sales	11,282	9,388
Off site working sales	967	506
Art department sales	7,318	6,929
Compost sales	6,954	9,615
	<u>61,868</u>	<u>61,595</u>
	<u><u>61,868</u></u>	<u><u>61,595</u></u>

The income from charitable activities was £61,868 (2023: £61,595) of which £61,868 was unrestricted (2023: £61,595) and £nil restricted (2023: £nil).

5. Total Expenditure on Charitable Activities

	2024	2023
	£	£
Project staff (all activities)	271,730	259,477
Operating and direct costs	31,321	28,641
Overhead costs	92,766	80,163
	<u>395,817</u>	<u>368,281</u>
	<u><u>395,817</u></u>	<u><u>368,281</u></u>

The total resources expended were £395,817 (2023: £368,281) of which £289,101 was unrestricted (2023: £279,450) and £106,716 restricted (2023: £88,831).

6. Staff costs

	2024	2023
	£	£
Wages and salaries	242,327	230,282
National Insurance	21,180	21,183
Pension costs	8,223	8,012
	<u>271,730</u>	<u>259,477</u>
	<u><u>271,730</u></u>	<u><u>259,477</u></u>

There were no employees in receipt of emoluments exceeding £60,000.

The charity trustees were not paid or received any other benefits from employment with the charity (2023: £nil) neither were they reimbursed expenses during the year (2023: £nil). No charity trustee received payment for professional or other services supplied to the charity (2023: £nil).

The key management personnel of the charity are the Project Director and the Charity Manager and their remuneration for the year is £68,350 (2023: £85,924).

The average number of employees during the year was 9 (2023: 8).

There were no other related party transactions during the year ended 31 March 2024.

The charity paid £8,223 (2023: £8,012) of pension contributions through NEST.

7. Net income/(expenditure) for the year

	2024	2023
	£	£
This is stated after charging:		
Depreciation	3,012	1,436
Independent Examination and accountancy	2,580	2,500
	<u>5,592</u>	<u>3,936</u>
	<u><u>5,592</u></u>	<u><u>3,936</u></u>

8. Tangible fixed assets

	Leasehold Improvements £	Plant, machinery & motor vehicles £	Fixtures, Fittings and Equipment £	Total £
Cost				
At 1 April 2023	11,289	14,468	2,518	28,275
Additions	-	8,000	-	8,000
	<u> </u>	<u> </u>	<u> </u>	<u> </u>
At 31 March 2024	<u>11,289</u>	<u>22,468</u>	<u>2,518</u>	<u>36,275</u>
	<u> </u>	<u> </u>	<u> </u>	<u> </u>
Depreciation				
At 1 April 2023	8,570	14,468	2,518	25,556
Charge for the year	1,412	1,600	-	3,012
	<u> </u>	<u> </u>	<u> </u>	<u> </u>
At 31 March 2024	<u>9,982</u>	<u>16,068</u>	<u>2,518</u>	<u>28,568</u>
	<u> </u>	<u> </u>	<u> </u>	<u> </u>
Carrying amount				
At 31 March 2024	<u>1,307</u>	<u>6,400</u>	<u>-</u>	<u>7,707</u>
	<u> </u>	<u> </u>	<u> </u>	<u> </u>
At 31 March 2023	<u>2,719</u>	<u>-</u>	<u>-</u>	<u>2,719</u>
	<u> </u>	<u> </u>	<u> </u>	<u> </u>

9. Debtors

	2024 £	2023 £
Prepayments and accrued income	6,167	16,092
Grants receivable	10,000	30,000
	<u> </u>	<u> </u>
	<u>16,167</u>	<u>46,092</u>
	<u> </u>	<u> </u>

10. Creditors: amounts falling due within one year:

	2024	2023
	£	£
Trade creditors	8,388	6,432
Taxation and social security	2,779	2,363
Accruals and deferred income	314	314
Other creditors	6,057	834
	<u>17,538</u>	<u>9,943</u>

11. Funds

	31 March 2023 £	Incoming resources £	Expenditure £	Transfers £	1 April 2024 £
Restricted funds					
The Considered Ask	-	22,837	(9,134)	-	13,703
National Lottery Community fund	23,669	49,026	(58,115)	-	14,580
Devon Community Foundation	2,817	-	-	-	2,817
Sir Halley Stewart Trust	53,750	-	(39,467)	-	14,283
	<u>80,236</u>	<u>71,863</u>	<u>(106,716)</u>	<u>-</u>	<u>45,383</u>
Total restricted funds	80,236	71,863	(106,716)	-	45,383
Unrestricted funds	287,395	320,357	(289,101)	-	318,651
	<u>367,631</u>	<u>392,220</u>	<u>(395,817)</u>	<u>-</u>	<u>364,034</u>
Total funds	367,631	392,220	(395,817)	-	364,034

The Considered Ask – Food education and cookery

Lloyds Bank Foundation – Woodwork Trainer salary

National Lottery Community Fund RC South West Region – Salaries, Evaluation and Overheads

Devon Community Foundation/OPCC – Woodwork trainer and materials for workshop extension

Sir Halley Stewart Trust – Resettlement Manager

11. Funds (continued)

	31 March 2022 £	Incoming resources £	Expenditure £	Transfers £	1 April 2023 £
Restricted funds					
Lloyds Bank Foundation	18,750	2,250	(25,000)	4,000	-
National Lottery Community Fund	10,000	57,500	(43,831)	-	23,669
Devon Community Foundation	2,817	-	-	-	2,817
Sir Halley Stewart Trust	53,750	20,000	(20,000)	-	53,750
	<u> </u>	<u> </u>	<u> </u>	<u> </u>	<u> </u>
Total restricted funds	85,317	79,750	(88,831)	4,000	80,236
Unrestricted funds	229,185	341,660	(279,450)	(4,000)	287,395
	<u> </u>	<u> </u>	<u> </u>	<u> </u>	<u> </u>
Total funds	<u>314,502</u>	<u>421,410</u>	<u>(368,281)</u>	<u>-</u>	<u>367,631</u>

12. Analysis of Net Assets between Funds

	Unrestricted Funds 2024 £	Restricted Funds 2024 £	Total Funds 2024 £
Fund balances at the year-end are represented by:			
Tangible fixed assets	7,707	-	7,707
Net current assets	310,944	45,383	356,327
	<u> </u>	<u> </u>	<u> </u>
Total net assets	<u>318,651</u>	<u>45,383</u>	<u>364,034</u>

2023 Comparative net assets by fund

	Unrestricted Funds	Restricted Funds	Total Funds
	2023	2023	2023
	£	£	£
Fund balances at the year-end are represented by:			
Tangible fixed assets	2,719	-	2,719
Net current assets	284,676	80,236	364,912
	<hr/>	<hr/>	<hr/>
Total net assets	287,395	80,236	367,631
	<hr/> <hr/>	<hr/> <hr/>	<hr/> <hr/>

13. Operating lease commitments

Commitments – the total of future minimum lease payments as follows:

	2024	2023
	£	£
Land and Buildings		
Less than 1 year	500	500
2-5 years	500	1,000
>5 years	-	-
	<hr/>	<hr/>
	1,000	1,500
	<hr/> <hr/>	<hr/> <hr/>



Reducing Reoffending. Transforming Lives

LandWorks is an independent charity providing a supported route back into employment and the community for people in prison or at risk of going to prison.

landworks.org.uk

info@landworks.org.uk

01803 864 891

Registered Charity Number: 1166057