

SUPPORT FOR SURVIVORS

England & Wales · Charity number 1165986

Details

Other names	S4S
Status	Registered
Legal form	CIO
Registered	2016-03-10
Register	View on the Charity Commission register

Contact

Address Sherwood Community Centre
Woodthorpe House
Mansfield Road
Sherwood
Nottingham
NG5 3FN

Phone 0115 962 2722

Email maxi@supportforsurvivors.org

Website www.supportforsurvivors.org

Activities

Objects: 1. TO PROMOTE AND PROTECT THE MENTAL HEALTH AND RELIEVE THE NEEDS OF VICTIMS AGED 16+ WHO ARE SURVIVORS OF CHILDHOOD SEXUAL, EMOTIONAL, PHYSICAL AND/OR INCEST ABUSE OR RAPE, BY PROVIDING THERAPEUTIC INTERVENTIONS, SUPPORT GROUPS, ADULT LEARNING COURSES, MENTORING AND TRAINING, AND SERVICES TO ENABLE SURVIVORS TO SUCCESSFULLY ENTER/RE-ENTER AND MAINTAIN THEIR PLACE IN THE WORKFORCE. 2. TO ADVANCE EDUCATION IN THE LONG TERM PERSONAL AND SOCIAL IMPLICATIONS AND EFFECTS OF CHILDHOOD SEXUAL, EMOTIONAL, PHYSICAL, INCEST ABUSE, AND RAPE DURING CHILDHOOD THROUGH TRAINING AND CONFERENCE DELIVERY TO PROFESSIONALS WITHIN THE HEALTH CARE, SOCIAL CARE, EDUCATION AND GOVERNMENT SECTORS.

Activities: We aim to empower male & female survivors aged 18 & older who have experienced childhood sexual/incest/emotional/ physical/neglect abuse, rape & trafficking, to reach their full potential through personal development recovery, training, education, & employment. Additionally, we strive to raise awareness, enhance understanding among professionals & decision-makers of the trauma, impact & prevalence

Classification

- **How:** Provides Human Resources, Provides Buildings/facilities/open Space, Provides Services, Provides Advocacy/advice/information, Sponsors Or Undertakes Research
- **What:** The Advancement Of Health Or Saving Of Lives
- **Who:** The General Public/mankind

Geography

- Derby City
- Derbyshire
- Doncaster
- Leicester City
- Leicestershire
- Lincolnshire
- Nottingham City
- Nottinghamshire
- Rutland
- Sheffield City

Finances

Period end	Income	Expenditure	Assets	Employees
2024-12-31	£46,700	£46,333	-	-
2023-12-31	£3,211	£25,575	-	-
2022-12-31	£42,613	£17,439	-	-
2021-12-31	£20,040	£16,150	-	-
2020-12-31	£20,028	£16,150	-	-

Trustees

Name	Role	Appointed
CHRISTINE GIBBON B.ED.	Chair	2016-04-01
Gavin Amatt-Carter		2024-01-29
Jessica Gim ui Colson		2024-01-29
Lauren Posada		2024-01-29
Lisa Marie Faria		2024-01-29
MAXINE ANNE ROBINSON CERTED		2015-08-01

SUPPORT FOR SURVIVORS

England & Wales - Charity number 1165986

Accounts

ANNUAL REPORT 2024

31st December 2024

31st December 2024



Charity Status Granted by Charity
Commission **10/03/2016**
Registered Charity **1165986**
CIO

Report Prepared by :

Maxi 'Leigh (Founder / Managing Director)

Joseph Curtis (Advisor)



BOARD OF TRUSTEES 2024

The Board of Trustees

The first charity trustees are as follows:

Maxi Robinson	Founder / Managing Director
Chris Gibbon	Chair
Jessica Colson	Secretary
Gavin Amatt-Carter	Trustee
Lisa Faria	Trustee
Lauren Posada	Trustee

Report of the Trustees for the year ended 31st December 2024

The Trustees present their annual report and financial statements of the charity for the year ended 31st December 2024.

Principal Office

Sherwood Community Centre
'Woodthorpe House'
Mansfield Road,
Sherwood,
Nottingham,
NG5 3FN

Charity Number: 1165986

Bankers

The Co-Operative bank – Business
PO Box 250
Skelmersdale
WN8 6WT



Who are We ?

Support for Survivors is a registered CIO , registration number 1165986 dated 10th March 2016, and is constituted in 2015, with its only voting members the board of Trustees. The charity was initially established as a peer support talking group in 2012 by the charities founder Maxi 'Leigh due to lack of services available for male and female victims and survivors. Maxi 'Leigh herself a survivor identified there were no services available in Nottingham City. Self-Help Nottingham provided a safe space, free of charge until Maxi 'Leigh was offered a three storey building which was an empty space for her to hold group support, educational workshops, emotional and advocacy support.

Mission Statement

Our mission is simple but profound: to support male and female victims and survivors aged eighteen plus who have experienced sexual/emotional/physical/incest abuse & rape. We have also identified 95% of victims & survivors have also experienced one of the following: domestic abuse, have been trafficked, put into slavery, or financially abused.

We empower victims and survivors to reach their maximum potential through a range of holistic interventions. All engagements have a strong focus on a positive mental attitude for empowerment, recovery, and well-being by providing many benefits, advocacy support, adult education, and training programs.

Aims & Objectives

1. To provide wrap-around holistic well-being and wellness plans and education, within a safe non-judgmental sharing environment. Progression-focused services with referrals and signposting to other agencies/organizations.
2. To help victims & survivors enhance their skills and abilities with an option to return to adult education or re-entering and maintaining their place within the workforce.
3. To provide and engage with peer-led survivor focus groups. These groups give survivors a voice and a platform. This can help to reduce isolation and lead to improved relationships with family, friends, and within the workplace.

4. To deliver training programs, raise awareness, and improve understanding among professionals. The training will help professionals understand and recognise the signs of trauma, and better support victims and survivors by implementing sensitive working practices.

Values

1. **Empathy and Compassion** - We will speak with kindness and listen to you carefully. We aim to provide hope and healing through a range of holistic interventions to nurture your inner thoughts and feelings.
 2. **Dignity and Respect** - We will set a good example by treating all with fairness, and humanity.
 3. **Non-judgmental and Safe Environment** - We provide a safe space for Victims and Survivors to disclose as they begin their healing journey.
 4. **Commitment** - Providing a positive, pro-active progression pathway to Victims and Survivor's support needs, aimed at positive progression as the individual moves forward.
 5. **Lived Experience** - Lived experience plays a significant role as the foundation for user and survivor involvement within our Charity, we believe, we listen, we hear, we take each other's stories seriously.
 6. **Empowerment** - Aiding self-confidence, self-esteem, and self-worth for a brighter future.
- **Partnership** - We believe in building strong relationships to raise awareness and to promote support and training.
 - **Awareness** - Breaking down stigma, improving knowledge and understanding.

Statement of Financial Responsibilities and Compliance

The financial statements of *Support for Survivors CIO* have been prepared in accordance with the charity's **Core Business Financial Management Policy (Appendix 10:13)** and comply with the requirements of the **Charities Act 2011** and the **Charity Commission's guidance for Charitable Incorporated Organisations (CC15d)**.

As the charity's gross income for the financial year was below **£250,000**, the financial statements have been prepared on a **receipts and payments basis**, in accordance with the Charity Commission's "**Receipts and Payments Accounts Pack for CIOs**".

The Trustees consider that this method provides a true and fair record of the charity's financial activities and its financial position during the

year.

Structure Governance and Management

Support for Survivors CIO is governed by its Constitution and managed by a Board of Trustees. Trustees are appointed in accordance with the Constitution and the Charity Commission's guidance. The Board meets regularly to review performance, manage risk, and ensure compliance with legal and regulatory requirements. The charity has adopted policies covering safeguarding, conflicts of interest, financial controls, and risk management, which are reviewed annually.

New Trustees are appointed by the existing Trustees and serve between three and six years, after which they may put themselves forward for re-appointment. The 'Board of Trustees' provides for a minimum of three Trustees to a maximum of 12 Trustees. All Trustees appointed give of their time freely.

At quarterly Trustee board meetings, the trustees work from the agenda presented by the charities Secretary, covering areas for discussion, including matters arising, the Managing Directors report, Finance report, safeguarding and policies, any other business.

Related Party Transactions and Conflict of Interest

The charity maintains a register of interests for all trustees. Where a potential conflict arises, the trustee concerned withdraws from discussions and decisions. No trustee received any remuneration during the year other than reimbursement of legitimate expenses.

Public Benefit Reporting

The Trustees confirm that they have complied with their duty under the Charities Act 2011 to have due regard to the Charity Commission's guidance on public benefit. The charity is a trauma informed-led recovery service. Consisting of therapeutic and holistic interventions, support groups, adult learning courses, personal development and recovery, advocacy support, volunteer training, befriending, and mentoring, further education and employment support. Undertaken wholly to support male and female victims and survivors aged 18 and over of abuse and to promote public understanding of the long-term impact of trauma.

1. To actively reduce the distress of victims aged 18+, who are survivors of childhood sexual abuse, including incest, emotional, and/or physical abuse. Additionally, we extend our support to survivors of rape, sexual exploitation, and trafficking.
2. We facilitate recovery and empowerment through a comprehensive

range of therapeutic interventions, support groups, adult learning courses, personal development, mentoring and training, education, and employment support.

3. To raise awareness through campaigning and to improve understanding among professionals working with victims of sexual abuse.
4. All engagement has a strong focus on positive mental attitude for the empowerment, recovery, and well-being of the survivors.
5. To provide holistic employment and progression focused services to enable survivors to successfully enter/re-enter and maintain their place in the workforce.
6. To provide victims and survivors with a comprehensive platform to develop their own recovery and progression pathway in a secure, non-judgmental, and sharing environment.
7. To advance education and awareness of the long-term personal and social implications and long-term effects through training and conference delivery to professionals within the health care, social care, education, and government sectors.

Risk Management

The Trustees have considered the major risks to which the charity is exposed, including safeguarding, funding sustainability, and beneficiary vulnerabilities and volunteer wellbeing. Systems and policies have been established to mitigate these risks, including staff training, regular financial oversight, and an active safeguarding policy. The Trustees are satisfied that appropriate measures are in place to manage these risks effectively.

Safeguarding and Operational Policies

Safeguarding is central to all aspects of the charity's work. Support for Survivors CIO operates in line with statutory safeguarding guidance and has a Safeguarding Policy, DBS Policy and Code of Conduct. All staff and volunteers receive regular safeguarding training, domestic abuse training, and training appertaining to operation and service user safety. Concerns are reported and managed in accordance with these policies.

Gov.Com Introduction and Latest Information

The scale of child sexual abuse is truly staggering. Children make up only 20% of the population but are the victims in 40% of all sexual offences. 7.5% of all adults in England and Wales are estimated to have been sexually abused before the age of 16, according to the Office for National Statistics' Crime Survey for England and Wales. That equates to 3.1 million adult victims and survivors of child sexual abuse.

1. The National Crime Agency's National Strategic Assessment of the Child Sexual Abuse Threat in 2025 makes clear that the risk to children from sexual abuse continues to increase, aggravated by evolving online environments and technology adoption. It estimates there are up to 840,000 offenders who pose some degree of sexual risk to children, and

there are 400,000 searches for online child sexual abuse material every month in the UK alone.

2. Over seven years of investigation, the Independent Inquiry into Child Sexual Abuse (IICSA) shone a light on the pain and suffering caused to victims and survivors of child sexual abuse and the failure of institutions to prioritise the protection of children in their care over personal and institutional reputations. In doing so, it drew on the testimony of over 7000 victims and survivors and considered over 2 million pages of evidence across 15 investigations.

3. IICSA's findings, culminating in the recommendations in Professor Alexis Jay's final report of October 2022, were a package of measures designed to give greater priority and focus, across Government, institutions and society, to protecting children from sexual abuse and to tackling the systemic weaknesses in organisations and practices which have left children vulnerable, exposed them to harm or denied them access to justice and support. Sadly, since IICSA reported, far too little progress has been made to put IICSA's findings and recommendations into action.

4. Support for Survivors, played a pivotal role within the enquiry, with the Managing Director interviewed on her personal experiences, being sexually abused whilst in foster care, and also as a professional representing the Charity. Many of the charities beneficiaries, were also involved in not only the enquiry, but also the 'Truth Project, where they were able to share their experiences within a safe and non-judgemental environment.

5. At the same time, the Government recognise that child sexual abuse is not a 'historic' issue, and across the country children continue to be subject to horrific sexual exploitation and abuse which has a devastating impact on their lives. The Centre for Expertise on Child Sexual Abuse estimates that 500,000 children are sexually abused every year – in the family home, in institutions, in our communities and online. IICSA, for good reason, focused on how institutions have failed to protect children from sexual abuse, but our response must go further, addressing all of the spaces in which child sexual abuse is perpetrated.

6. Child sexual abuse is an evolving threat with ever-more sophisticated modes of offending creating new risks. That threat includes the exploitation of new technology, including AI, by offenders in the online world; and the growing identification and reporting of peer-on-peer abuse. At the same time, we must also acknowledge and address the harsh reality that the majority of child sexual abuse continues to be perpetrated within the family environment.

7. This Government is committed to put that right and will do everything in its power to prevent the horrors of child sexual abuse, providing the national and local leadership required to tackle offending, protect children from harm, and support victims and survivors, including setting out in this update our next steps towards acting on IICSA's recommendations. ['Source Gov.com April 2025'](#)

To date we are still awaiting the Governments commitments and their

next steps towards implementing IICSA’s recommendations, with survivors standing down on the governments child grooming advice inquiry [‘Source BBC Oct2025’](#)



EXECUTIVE SUMMARY

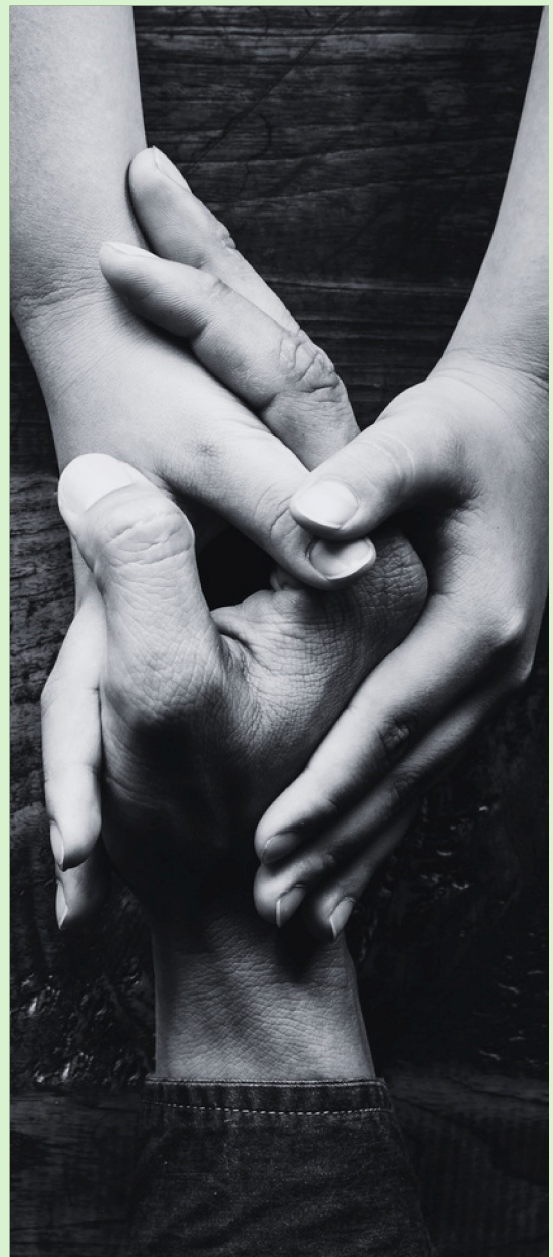
Sexual abuse is a difficult, private and sensitive subject to talk about.

We understand that the journey to healing is not a simple path, but one that requires empathy, unwavering support, and a safe space for recovery.

Over the past year, we have continued to offer vital services to male and female survivors of sexual, physical, and emotional, neglect abuse, rape and trafficking.

Every individual who walks through our doors is met with compassion and care, and we are humbled to be a part of their recovery journey.

Despite ongoing challenges, such as increased requests from outside our region, we remain committed to providing life-changing support, ensuring survivors feel seen, heard and valued, throughout the East Midlands.



FOUNDER'S MESSAGE

This year has been both challenging and deeply rewarding for us at Support for Survivors. Our charity has grown in ways we couldn't have imagined when we first began, and it is heartening to see the real difference we make in the lives of those we serve.

With our growth has come moments of profound loss. Tragically, we lost two cherished members of our team. Christina Maria Richardson, affectionately known as Tina, one of our dedicated volunteer support workers, passed away from cancer. Marilyn and I were privileged to stay by her side throughout her illness until she died on 15th July 2024, at just 52 years old.

Shortly after, we also lost our Chair, Jeremy William Edward Taylor, known to us all as Jez. From the very beginning, when the talking group exceeded all expectations, Jez was instrumental in shaping and guiding the charity. His vision and leadership steered us to where we are today.

The passing of both Tina and Jez had a profound impact on all of us who devote our time and energy to supporting victims and survivors. They were extraordinary individuals, deeply loved by their families, and their loss was heartbreaking.

Their strength, dedication, and resilience will never be forgotten. We continue to honour their memory through our daily work, ensuring that no survivor ever feels alone. My heartfelt thoughts remain with their families and loved ones.

I want to take a moment to express my deepest gratitude to the incredible team of volunteers, trustees, and partners who make this possible. Without your commitment, empathy, and strength, none of this would be achievable. Each of you plays a crucial role in the recovery of the survivors and their families we support, and your efforts are deeply appreciated.

I would also like to thank Joseph Curtis, who was commissioned to work on the charities development towards United Kingdom Accreditation Service (UKAS) and 'The Survivors Trust' National Sexual Violence Service Standards. Thank you to 'The Survivors Trust' team who have consulted with Joseph and Maxi 'Leigh on this big piece of work, where the charities governance, policies and procedures, volunteer welfare, service users safety, risk, safeguarding, incidents and behaviours and financial procedures are scrutinised and categorised into the charities charter. Well done and thank you Joseph and 'The Survivors Trust' who the charity is a member of.

The Survivors Trust was also involved in the volunteers trauma training, safeguarding, conflict and Independent Sexual Violence Management.

Together, we are creating a community of healing, empowerment and hope. We are not just helping people survive - we are helping them thrive.

We continued to develop relationships with organisations, specifically 'The Police and Crime Commission' with Joseph and I having a meaningful meeting and discussion with 'The Maggie Oliver Foundation' who provide emotional and legal advocacy to survivors who are based in the United Kingdom.

We have been partnering with Nottingham Trent University year in year out. This year the students worked on how the charity further requires theory and evidence based research to justify how our peer led service helps recovery seen in the provided scenario of one of the charities case studies.

- Trauma-informed Care and its relevance to Support for Survivors Charity
- Integrative Evaluation Strategies: Enhancing Psychological Resilience and Somatic Healing to Demonstrate Service Impact.
- Harnessing Survivor Narratives and Digital Storytelling to Strengthen NHS Funding Appeals.
- Tracking progress of service users ongoing recovery from beginning of access to services.
- Implement qualitative questionnaire for effective evaluation strategies to improve chances of funding.
- Raising awareness and funding avenues through social media.

I want to say a huge thank to **Dr Ryan Lumber** M.Sc., CPsychol, FHEA Senior Lecturer in Psychology and his students on the Theory and Applications to Mental Health module.

The High Sheriff of Nottinghamshire

On the 2nd day of October 2024, the High Sheriff of Nottinghamshire and The High Sheriff's Lady arrived at the Sherwood Community Centre came to visit the charity in recognition of great and valuable services to the community. The award also recognises the appreciation of the residents and the people of the said High Sheriff's County for activity and contribution in enhancing the life of the community.

The award was presented to me, with many beneficiaries, trustees, family and friends celebrating the award. A massive thank you to you all, as always I am so humbled, you continue to touch and warm my heart.

I continue to sit on the following boards.

- Church of England National Safeguarding Panel, (NSP) as a survivor advisor
- 'Director' Beyond Just Words, delivery of survivor training throughout the Catholic Church
- Southwell Diocese, Designated Safeguarding Advisory Panel, (DSAP) as a survivor advisor
- Southwell Minster Cathedral Safeguarding Management Group (CMSG) as a survivor advisor.

Funding and Sustainability: A Year of Challenge and Resilience

This year has been one of the most challenging periods we have faced in terms of funding. Despite submitting numerous funding applications, we have experienced repeated rejections. The demand for grant funding across the sector has grown enormously, and this has had a significant and detrimental impact on our charity's financial stability.

In all my years of applying for grant funding, we have never encountered such difficulty. The level of competition and the limited availability of resources have made it increasingly hard for small, community-based organisations like ours to secure the support we need to continue our vital work.

As a result, we are now exploring new and creative ways to sustain our services. This includes increasing our focus on **community fundraising**, **partnerships**, and **public awareness** initiatives, looking beyond the traditional "grant funding box."

It is deeply concerning that, despite national inquiries and research, such as the Inquiry into Child Sexual Abuse, many of the recommendations, including those from **Professor Alexis Jay**, have yet to translate into meaningful change or tangible outcomes for survivors and the organisations that support them.

Our community continues to feel unseen.

We provide crucial support to individuals living with the effects of trauma, abuse, and mental health challenges, yet we remain largely unsupported by mainstream services, including the NHS. This lack of systemic recognition and funding places further strain on charities like ours, which continue to bridge the gap for those most in need.

Despite these challenges, our commitment remains steadfast. We will continue to advocate, support, and empower survivors, ensuring that their voices are heard, and their recovery journeys are respected and supported.

Maxi Leigh FOUNDER / MANAGING DIRECTOR

Key Achievements and our Services

The past year has been another testament to the strength of our community, and the resilience of our survivors we support, and

We offer a range of services, from counselling, mindfulness to advocacy, all designed to provide a safe, supportive environment where survivors can begin to heal and rebuild their lives.



At Support for Survivors, we believe in meeting survivors where they are on their journey, to healing and recovery, and we offer a range of tailored services to suit their individual needs.

It's also important to inform you, we consult with our survivors annually, as well as recommendations from Nottingham Trent University our research partners, this is also informed by survivor input, what they would like researching on their lived experiences as survivors.

Some of the services we provide include the following, and here are some of the highlights:

14-Week Personal Development Recovery Program – Our flagship program continues to make a significant impact. This year, we celebrated with participants who completed the program, many of whom have gone on to become volunteers themselves.



- Counselling – Mindfulness – Emotional Person-Centred Support- Yoga
- Relationship and family mediation- Pastoral support
- Chaperone and Advocacy support
- Support with Police, Legal, and Courts – Safeguarding – Domestic-abuse
- Peer-led support groups – Peer-led focus groups – Weekly Drop-in
- Creative Arts -
 - Help to housing, homelessness, welfare and benefits, addictions
 - Self-harming and suicide ideation.
 - Wellbeing and Wellness plans – Food banks

Interventions for Survivors' Mental Health and Well-being

Our interventions are designed to enhance the mental health and alleviate the trauma distress of survivors, providing a supportive environment for connection, sharing, and mutual strength. Many individuals face isolation, lacking someone to talk to who truly understands their experiences.



In response to growing demand, our programs have expanded to foster mental, physical, and emotional healing. It is widely recognized that mental health challenges can significantly affect physical health in various ways. Many survivors report experiencing physical symptoms such as fibromyalgia, anxiety, panic attacks, nightmares, and chronic fatigue, along with other persistent health issues.

It is crucial for survivors to have a voice in their healing process. We prioritize a patient-centred approach, allowing them to progress at their own pace after being referred to our services. While we respect their autonomy, we ensure ongoing support by monitoring and reviewing each individual's progress every six weeks, collaboratively agreeing on their continued support and the steps to move forward.

Let's have a look at our Interventions Beneficiary Attendee's

Weekly Drop-In Sessions

We host a weekly drop-in that originally catered to men and women separately. However, through our discussions with survivors, it became evident that gender was not a determining factor in the healing process. All attendees have experienced abuse, and this shared understanding was crucial.

One of the most significant developments has been the successful integration of female survivors who initially hesitated to mix due to fear. Over time, many of these individuals have formed friendships with male survivors, fostering a sense of community and support.

The drop-in sessions play a pivotal role in promoting mental health and healing. Participants experience equality and camaraderie, forming friendships that extend beyond the sessions. They engage in various social activities, such as fishing, knitting, creative projects, playing games, and enjoying meals together, clothing and household goods are available for those in need, all of which contribute to a profound sense of belonging.

While our conversations do not center around specific details of past abuse, there is a deep, collective awareness among attendees that everyone has faced similar challenges in their childhood. This environment of mutual support and understanding is essential for their healing journey. We also invite health professionals to come along and raise awareness, specifically from Nottingham University Hospitals, this year speaking about diabetes, we had Lord Barrister, born into the circus, his mother was a trapeze artist, three visits by individuals from Carlton, Mapperley and Nottingham Rotary club.

January 2024 through to December 2024 we held **44 drop-in sessions** with **606 individuals** accessing this service, throughout the year **183 men** attended compared to **423 women**.

There are always between three to four support workers within all of our sessions, with risk assessments and safeguarding at the heart of all of our support work.

Emotional Peer Support – Counselling – Mindfulness Sessions

Empowering Healing Through Trauma-Informed Care

Our charity is committed to delivering comprehensive, trauma-based emotional support tailored specifically for victims and survivors of childhood abuse. Through our specialised trauma counselling and mindfulness sessions, we empower individuals to navigate their healing journeys with resilience and strength.

By fostering a safe and nurturing environment, we help survivors reclaim their voices, build meaningful connections, and cultivate emotional well-being. Together, we are transforming pain into hope and facilitating profound healing for those who need it most.

Let's have a look at how many sessions we did.

We **delivered 52 mindfulness sessions** as well as **six group mindfulness sessions**, with **5 women** at all sessions, all who attended were **11 women** and **1 male**, with **3 women** accessing yoga sessions.

Trauma emotional peer support and counselling sessions we did a total of **283 sessions** in total. There were **75 men** in total and **208 women**. These sessions are mostly face to face or via digital platform.

Service-User Away Day



A Special Day of Gratitude and Joy

Support for Survivors extends our heartfelt gratitude to Carlton Lottery for their generous donation, which enabled us to organize a memorable day trip for our service users on August 14, 2024. For many of our participants, this was their first opportunity to leave Nottingham City, and among those, several had never had the chance to visit the seaside.

We consulted our survivors on their destination, and the unanimous choice was Skegness. On a beautifully sunny day, we gathered at Nottingham Train Station, with one couple choosing to drive and meet us there. This outing marked a significant milestone for our charity, as it was the first time we could take our service users on such an excursion. Thanks to the funding, we treated everyone to a delightful serving of fish and chips.

A total of 15 travelled by train, with two arriving by car. The day was filled with laughter and joy, particularly for one of our female service users who had never experienced the seaside. She was eager to feel the sand beneath her feet and take a dip in the sea. The sense of camaraderie and mutual support among everyone was truly extraordinary.

This experience exemplifies the positive impact of our ongoing services and the continuity of support throughout a survivor's journey with our charity.

REFERRALS

RECEIVED

In 2024, our services

expanded, allowing us to support **438** survivors, with **75** referrals currently on our waiting list.

This year, we continued to see a significant number of referrals to our services, reflecting the increasing need for the support we provide. We noted **36 (Thirty six)** self-referrals, with **39 (Thirty nine)** received from NHS Services.

Unfortunately, due to lack of funding the date of the oldest referral on our waiting list, dated back to 09/02/2023. Nine (09) referrals due to be processed.



The charity proactively engaged with the NHS Mental Health Care Trust to seek funding support, providing evidence of our impact and the significant savings we offer to the NHS. Unfortunately, these efforts did not yield the desired results, but we remain committed to ensuring that each individual does not face their healing journey alone.

Nottingham City Referrals equated to 36 (Thirty Six)

Nottinghamshire County Referrals 36 (Thirty Six)

East Midlands ‘Three’ (3)

Male referrals equated to 30 (Thirty)

Female equated to 45 (Forty Five)

Ethnicity

White Caucasian	64	White/Black (Mixed Race)	01
Asian	06	Pakistani	01
Syrian	01	Indian	01
African	01		

NATIONAL REFERRALS

Referrals came from across the country, highlighting both the reach and impact of our work. While we focus on supporting those in our local area, the increasing number of requests from outside the East Midlands reflects a broader demand for survivor services nationwide. Where we are unable to assist directly, we work hard to ensure survivors are referred to other trusted organisations, such as The Survivors Trust. These referrals, along with our advocacy efforts, demonstrate the essential role we play in providing a lifeline for victims and survivors of abuse across the country.

Birmingham	01	Scotland	01
Cambridge	01	Cardiff	01
Essex	01	Surrey	01
London	04	West Midlands	01
Norfolk	02	Yorkshire	01



Peterborough	01		
--------------	----	--	--

In-House Signposting

In addition to the direct services we provide, a key aspect of our work involves helping survivors access the specialised support they need through external organisations. Throughout 2024, we made **32 referrals** to a range of organisations that offer complementary support services. These referrals help ensure that survivors receive holistic care, addressing their needs beyond what we can provide directly.

These referrals are vital in addressing the broad spectrum of challenges survivors face, from financial hardship and housing instability to medical and legal needs. Our advocacy team work closely with these organisations to ensure a smooth transition and ongoing support for survivors, particularly those with complex needs, including learning disabilities and mental health challenges.

We are proud to collaborate with these external services, ensuring that survivors are not only heard but are connected to the resources that can provide lasting support.

Organisation	Referrals To:	
General Practitioner (GPs)	17	Mental & Physical Assessment
Nottingham City Council – Adult Social Care	01	Assessment for living conditions needs
Talking therapies	02	Counselling (other area required)
The Tomorrow Project	02	Suicide ideation and self-harm intervention
Personal Independent Payment	01	Mandatory

		reconsideration mobility component
GP	01	Support letter supporting housing application
GP	01	To support female through her smear test
Framework	01	Nature in mind for mental health
Notts County Council and Adult Social Care	01	Assess for living conditions needs
DWP	01	Tribunal - PIP
DWP	01	Support letter regarding trauma & mental health engagement
Criminal Injuries Compensation	01	Claim for violence
A.M. Law Solicitors	01	Report for court hearing
Magistrates Courts	01	Service-user hearing to re-claim home to evict tenants
Schools Appeals Teams	01	Service-user support re child catchment area.
Capita	01	Work capability assessment

STORIES OF IMPACT

Year on year out we have witnessed countless stories of resilience and healing within our community. One survivor, after completing our one to one counselling, who suffered with suicide ideation for over a year, this impacted not only his family but his work, and social life shared:

"Support for Survivors, thank you for everything you have done for me, I really don't think anyone else could have helped me like you have helped me, I tried private and online sessions, they did not help me or work. I feel born again, and have had a great year. Remember, how much you help so many people. You have made such a difference to my life, and I will be forever thankful". (Source male survivor)

"I knew as soon as you answered the phone that I had found the right place for my emotional support. As soon as I heard your voice, it got inside my heart, finding the right person, and the right charity". (Source male survivor)

While these individual successes drive us, we are reminded that the path to healing is different for everyone. Each story of progress, no matter how small, is a testament to the importance of the work we do. We continue to walk alongside survivors, offering the support they need to move forward, and we honour their courage every day.



Our Volunteers



Our volunteers do far more than offer a helping hand - they bring compassion and lived experience, making a profound difference in the lives of those they support. **Many of our volunteers are survivors** themselves, which allows them to offer invaluable empathy and understanding those they serve.

Volunteers are the heartbeat of Support for Survivors, and their dedication continues to be a driving force behind the success of our programs. In 2024, we were fortunate to have **nine dedicated volunteers**, each of them went above and beyond, offering their time, empathy, and skills to support survivors on their recovery journeys.

Volunteer Contributions

- **Total Volunteer Hours: 2,563.10 hours**
- **Telephone support 128 hours**

Despite some volunteers being unable to work certain months due to illness, their collective contributions were immense, demonstrating their unwavering commitment to our mission.

Recognition of Outstanding Achievement in Peer Support Work

Our **Office Manager** has been a dedicated volunteer with us for over seven years and, at 74 years of age, continues to flourish in her role. Her commitment is truly remarkable — she rarely takes time off and always feels compelled to be available for survivors who may be struggling.

She shared, “This charity is my life. It keeps me going, and I gain so much satisfaction from being able to help and support both our male and female victims and survivors on their healing journeys.”

I am immensely proud to highlight the exceptional dedication of one of our peer support workers, who has demonstrated remarkable resilience throughout her journey. Over the years, she has faced significant challenges, including childhood abuse, domestic violence, addictions, and various associated traumas. Her unwavering commitment to personal growth is evident in her consistent attendance at counselling, mindfulness, personal development and recovery sessions and advocacy support.

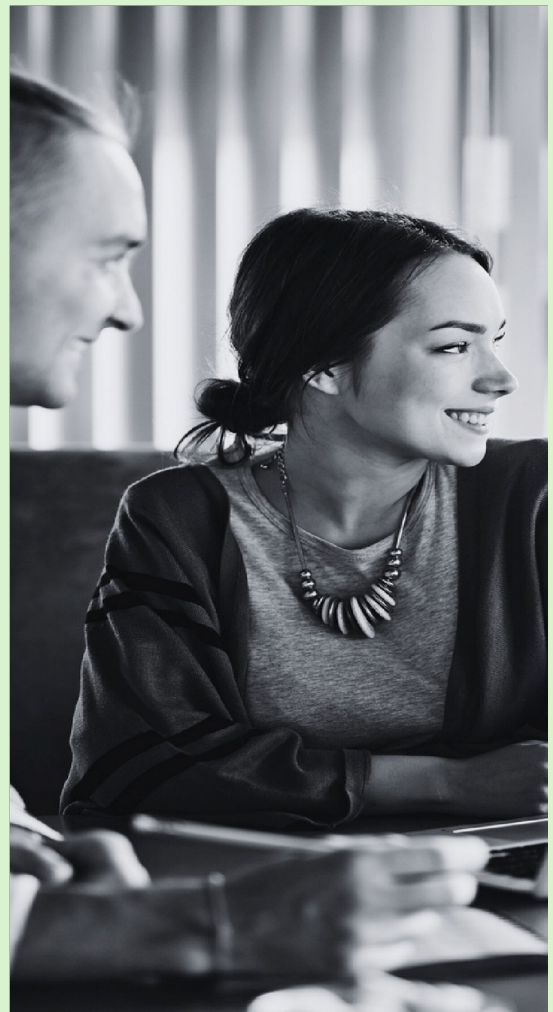
Her journey continued with our mindfulness program, where her transformation was nothing short of inspiring. Together, we had the privilege of participating in the Nottingham Practice Development Unit (PDU) in collaboration with the Nottingham Community and Voluntary Service, engaging in the "Bereavement and Loss: Working Therapeutically with Grief" program. This extensive training has equipped us both to facilitate one-on-one and group bereavement programs effectively.

It is a testament to her strength and dedication that she has overcome these adversities and emerged as a qualified professional in this essential area of support. Congratulations on this well-deserved achievement!

Volunteer Development

Recognising the emotional toll that supporting survivors can take, we introduced **supervision, reflective practice, and peer support group sessions for our volunteers**. These initiatives help safeguard their wellbeing, ensuring they can continue to provide the compassionate care survivors rely on while preventing burnout.

We are immensely proud of our volunteers, whose passion for giving back, often as part of their own recovery journeys, has positively influenced the lives of countless survivors. Their collective efforts have brought hope, healing, and strength to both the individuals we support and the wider community.



End of Year Accounts

31/12/2023 – 31/12/2024

Total (Carried Forward)	£ 8902.34
-------------------------	-----------

INCOME

Grants/Fundraising	+£37,797.25
--------------------	-------------

EXPENDITURE

Total Expenses	-(£46,332.70)
----------------	---------------

CLOSING BALANCE

Total	£ 366.89
-------	----------

Despite the many challenges, we are proud of the financial stewardship that allows us to continue our work.

We remain deeply grateful to all those who have supported us financially - your contributions allow us to continue our mission of healing and hope.

Financial Overview

INCOME	TOTAL
Business Donations	£3 148.00
Event Revenue	£ 474.09
Grants	£21150.00
Misc Donations	£ 9723.53
Personal Donations	£ 747.00
Program Revenue	£ 2554.63
Gross Revenue	£37797.25

EXPENSES	TOTAL
Office and Equipment	£ 3874.80
Legal and Financial	£ 851.57
Marketing and Advertising	£ 19.00
Training and Resources	£ 500.00
Rent	£ 7213.24
Sundry	£ 2656.41
Volunteer Expenses	£ 2839.73
Transport and travel	£ 1198.95
Vehicle	£ 229.00
Professional	£26950.00
TOTAL	£46332.70

STRATEGIC

FOCUS - 2025

As we look ahead, our focus still remains on growth and deepening our impact in 2025, we plan to:

- **Expand our services** to reach even more victims and survivors, both locally and nationally.
- **Accredit our Personal Development and Recovery Program**, ensuring it continues to be a gold standard in survivor care and recovery, both in person and on-line.
- **Strengthen our volunteer training**, by providing ongoing education, and support to ensure our team can meet the complex needs of those we serve.
- **Secure additional funding**, to maintain and expand our programs, ensuring that no victim and survivor is turned away.
- **Securing Employment for Continued Support** To strengthen our volunteer team and support our Managing Director, we have reached a pivotal point where we have demonstrated our sustainability despite challenges in funding. We are not only surviving but also thriving as an organisation.



Trustee Reflection – Gavin Amatt-Carter

As I pause to reflect on this past year, I notice a deep sense of both weight and gratitude in my body. It has been a year that has tested our resilience as a board and as a community. The financial figures and policies, I feel the heartbeat of what this charity truly stands for, the courage of survivors and the quiet, steadfast compassion that sustains our work.

Sitting as a trustee with 'Support for Survivors' I often experience a subtle hum in my chest when I witness how lived experience shapes our 'Governance'. We are not a distant board making abstract decisions; we are a collective of human beings holding the stories, pain and triumphs of others with reverence. Each conversation around risk, safeguarding, funding, or volunteer wellbeing carries the echo of the lives we touch. That awareness grounds me, it reminds me that leadership, in this context, is as much about listening as it is about guiding.

This year brought both inspiration and loss. The deaths of Tina and Jez were deeply felt throughout our community. I sensed their absence like a stillness in the room, a quiet pause that invited reflection on what it means to serve with heart. Their commitment lives on in every act of kindness within our charity. Their legacy reminds me that trauma-informed care is not only about techniques or policies, but about the quality of our relational presence, the compassion we extend to each other as we extend it to survivors.

From my perspective as a trustee, one of the most striking developments has been how survivors themselves are shaping the direction of our services. Their voices are no longer peripheral; they are the compass guiding our growth. This embodiment of co-production feels aligned with the values of empathy, dignity, and empowerment that run through every aspect of our ethos. It is also an affirmation that healing and governance can coexist, that strategy can be rooted in humanity.

I am also aware of the tension between our compassion and the financial realities we face. Reading the funding reports, I felt a heaviness in my stomach, the familiar frustration that such essential, life-changing work must continually fight for

around – but I also feel a quiet determination that within me. The charity has never been about money. It is about persistence, creativity, and faith in what can grow when people are met with belief rather than bureaucracy.

As trustees, we hold a collective responsibility to maintain ethical standards, to ensure transparency, and to model the values and the culture we wish to see in the world. For me, this is not just governance, it is relational stewardship. I have learned that when we listen with curiosity, when we allow space for wisdom and embodiment in decision-making, the charity itself becomes more humane, more resilient, more alive.

Looking ahead, I feel both humbled and hopeful. There is still much to be done, in giving, in advocacy, in supporting those still waiting for help. But there is also a growing light in what we have built together. We are creating not only a service, but a sanctuary, a space where stories are shared and the wisdom, and where healing becomes a shared act of courage.

For this, and for every survivor who continues to reach for what recovery truly means, I offer my deepest gratitude.

Gavin Amatt-Carter – Trustee – Support for Survivors Charity

End of Annual Report

SUPPORT FOR SURVIVORS

31/12/2023 – 31/12/2024



Maxi 'Leigh



SUPPORT FOR SURVIVORS

England & Wales - Charity number 1165986

Accounts

ANNUAL REPORT 2023

1ST JANUARY 2023 -
31ST DECEMBER 2023



Charity Status Granted by Charity
Commission **10/03/2016**
Registered Charity **1165986**
CIO

Report Prepared by :
Maxi 'Leigh (Founder / Managing Director)
Joseph Curtis (Development Manager)



BOARD OF TRUSTEES 2023

SUPPORT FOR SURVIVORS BOARD OF TRUSTEES EFFECTIVE 2023

JEREMY TAYLOR

SECRETARY

CHRIS GIBBON

CHAIR

MAXI 'LEIGH

FOUNDER, MANAGING
DIRECTOR AND
ACTING TREASURER

JOSEPH CURTIS

TRUSTEE

DEBBIE HEATH

TRUSTEE

GINETTE SMEDLEY

TRUSTEE



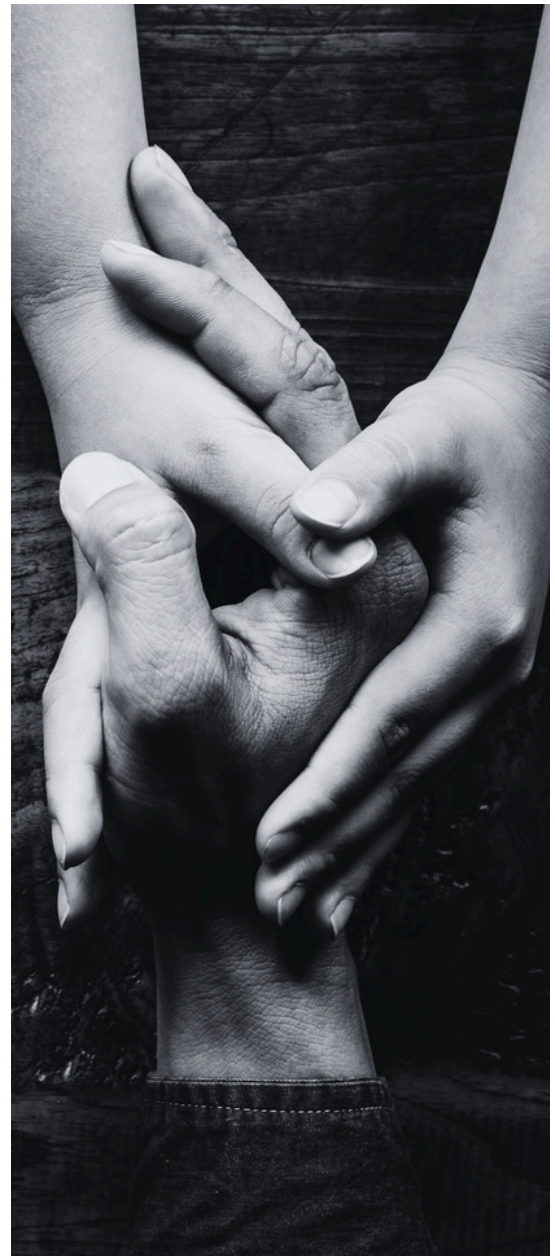
EXECUTIVE SUMMARY

We understand that the journey to healing is not a simple path, but one that requires empathy, unwavering support, and a safe space for recovery.

Over the past year, we have continued to offer vital services to male and female survivors of sexual, physical, and emotional abuse, ensuring they are not alone in their healing process.

In 2023, our services expanded to reach **426 survivors**, with **67 individuals still on our waiting list**. Every individual who walks through our doors is met with compassion and care, and we are humbled to be a part of their recovery journey.

Despite ongoing challenges, such as increased requests from outside our region, we remain committed to providing life-changing support, ensuring survivors feel seen, heard and valued.



FOUNDER'S MESSAGE

This year has been both challenging and deeply rewarding for us at Support for Survivors. Our charity has grown in ways we couldn't have imagined when we first began, and it is heartening to see the real difference we make in the lives of those we serve.

However, with this growth, we have also faced painful moments. For the first time in our charity's history, we tragically lost one of our young female survivors. She was an incredible individual who carried immense responsibility within her family as a young carer, but the weight of these responsibilities, compounded by the effects of the pandemic, became too much for her to bear. Her passing was a heartbreaking reminder of the challenges many of our survivors face on their journey to recovery.

Her strength and resilience will never be forgotten, and we continue to honour her memory through the work we do every day, ensuring no survivor feels they are alone. My heartfelt thoughts remain with her family and loved ones.

I want to take a moment to express my deepest gratitude to the incredible team of volunteers, trustees, and partners who make this possible. Without your commitment, empathy, and strength, none of this would be achievable. Each of you plays a crucial role in the recovery of the survivors we support, and your efforts are deeply appreciated.

Together, we are creating a community of healing, empowerment and hope. We are not just helping people survive - we are helping them thrive.

Maxi Leigh FOUNDER / MANAGING DIRECTOR

KEY ACHIEVEMENTS

The past year has been a testament to the strength of our community and the resilience of the survivors we support. Here are some of the highlights:

- **426 survivors supported** – We are proud to have provided ongoing support to over 400 individuals, helping them through some of the most difficult moments in their lives.
- **14-Week Personal Development Recovery Program** – Our flagship program continues to make a significant impact. This year, we celebrated with participants who completed the program, many of whom have gone on to become volunteers themselves.
- **Volunteer Growth** – Our incredible team of volunteers has expanded, and their dedication has been truly inspiring. They have contributed over **2,832 hours of service**, going above and beyond to offer compassion and care to survivors.
- **Signposting** – We also saw a rise in referrals from across the country, highlighting the growing need for our services. While we cannot always support those outside our region, we ensure that every individual is guided to the help they need.



WHO WE ARE

Mission Statement

Our mission is simple but profound: to support survivors of abuse in reclaiming their lives. We provide holistic care for male and female survivors, aged 18+, who have experienced sexual, emotional, physical abuse, neglect and trafficking.

We offer a range of services, from counselling to advocacy, all designed to provide a safe, supportive environment where survivors can begin to heal and rebuild their futures.



Our Services

At Support for Survivors, we believe in meeting survivors where they are on their journey, offering services that are tailored to their individual needs. Some of the services we provide include:

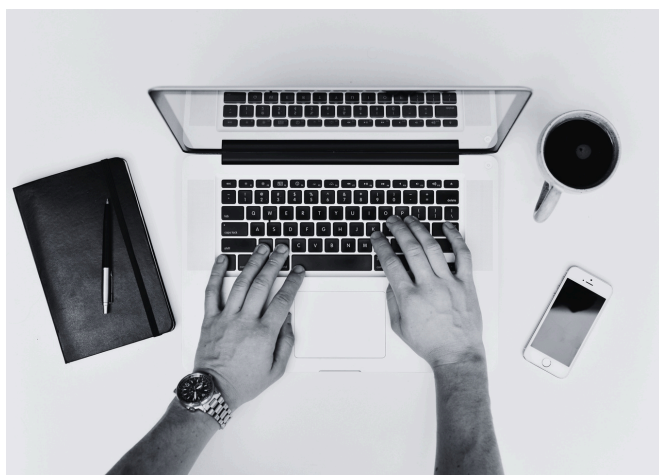
- **Counselling** – Individualised emotional support tailored to each survivor’s experience.
- **Peer-led Support Groups** – A place for survivors to connect, share, and find strength in each other.
- **Mindfulness and Yoga** – Programs designed to promote mental and emotional well-being.
- **Advocacy and Legal Support** – Assistance in navigating the legal system, ensuring survivors receive the justice they deserve.
- **Personal Development and Recovery Programs** – Empowering survivors with the tools to regain confidence, self-esteem, and control of their lives.

REFERRALS RECEIVED

This year, we continued to see a significant number of referrals to our services, reflecting the increasing need for the support we provide.

By the end of 2023, we received **27 new referrals** (5 male survivors and 22 female survivors)

While we were able to accommodate many, **67 individuals remain on our waiting list**, highlighting the growing demand for our services.



ORGANISATION	REFERRALS
NOTTINGHAM TALKING THERAPIES	3
GP SURGERIES (NHS)	2
CRISIS TEAM	2
GEDLING MENTAL HEALTH TEAM	1
OCCUPATIONAL HEALTH TEAM	2
NHS MENTAL HEALTH TEAM	1
SELF-REFERRALS	3
HEALTH ASSURED	1
INSIGHT TALKING THERAPIES	4
SOCIAL PRESCRIBING	2
WEBSITE, GOOGLE, FACEBOOK	1 EACH

NATIONAL REFERRALS

Referrals came from across the country, highlighting both the reach and impact of our work. While we focus on supporting those in our local area, the increasing number of requests from outside the East Midlands reflects a broader demand for survivor services nationwide. Where we are unable to assist directly, we work hard to ensure survivors are referred to other trusted organisations, such as The Survivors Trust.

These referrals, along with our advocacy efforts, demonstrate the essential role we play in providing a lifeline for survivors of abuse across the country.

ORGANISATION	REFERRALS
BURY ST. EDMUNDS, WEYMOUTH, DORSET, HEMEL HEMP	1 EACH (4)
MANCHESTER, BIRMINGHAM, WINCHESTER, BRISTOL, MILTON KEYNES, LEEDS, YORK	1 EACH (7)
NATIONAL INQUIRIES	22



OUR SIGNPOSTING

In addition to the direct services we provide, a key aspect of our work involves helping survivors access the specialised support they need through external organisations. Throughout 2023, we made **29 referrals** to a range of organisations that offer complementary support services. These referrals help ensure that survivors receive holistic care, addressing their needs beyond what we can provide directly.

These referrals are vital in addressing the broad spectrum of challenges survivors face, from financial hardship and housing instability to medical and legal needs. Our advocacy team works closely with these organisations to ensure a smooth transition and ongoing support for survivors, particularly those with complex needs, including learning disabilities and mental health challenges.

We are proud to collaborate with these external services, ensuring that survivors are not only heard but are connected to the resources that can provide lasting support.

ORGANISATION	REFERRALS
GENERAL PRACTITIONERS (GPs)	5
DWP / PIP	3
UNIVERSAL CREDIT	1
EVERYTURN	1
BAC-IN (DRUG / ALCOHOL)	4
CAPITA	2
SELF-HARM SUPPORT	3
HOMELINK	1
NESS ADHD SUPPORT	1
JORDANS SOLICITORS	1
THE TOMORROW PROJECT	3

STORIES OF IMPACT

This year, we witnessed countless stories of resilience and healing within our community. One survivor, after completing our 12-step Survivor Program, shared:

"Support for Survivors helped me find a new beginning. I arrived broken, but through their programs and the support of other survivors, I found strength."

Another story highlights the profound impact of our peer-led support groups. A participant shared how, after years of silence, they finally felt understood and supported, finding comfort in knowing they weren't alone in their journey.

While these individual successes drive us, we are reminded that the path to healing is different for everyone. Each story of progress, no matter how small, is a testament to the importance of the work we do. We continue to walk alongside survivors, offering the support they need to move forward, and we honour their courage every day.



OUR VOLUNTEERS

Volunteers are the heartbeat of Support for Survivors, and their dedication continues to be a driving force behind the success of our programs. In 2023, we were fortunate to have **six dedicated volunteers**, with **three new volunteers** joining our ranks. Each of them went above and beyond, offering their time, empathy, and skills to support survivors on their recovery journeys.

Our volunteers do far more than offer a helping hand - they bring compassion and lived experience, making a profound difference in the lives of those they support. **Many of our volunteers are survivors** themselves, which allows them to offer invaluable empathy and understanding to those they serve.

Volunteer Contributions

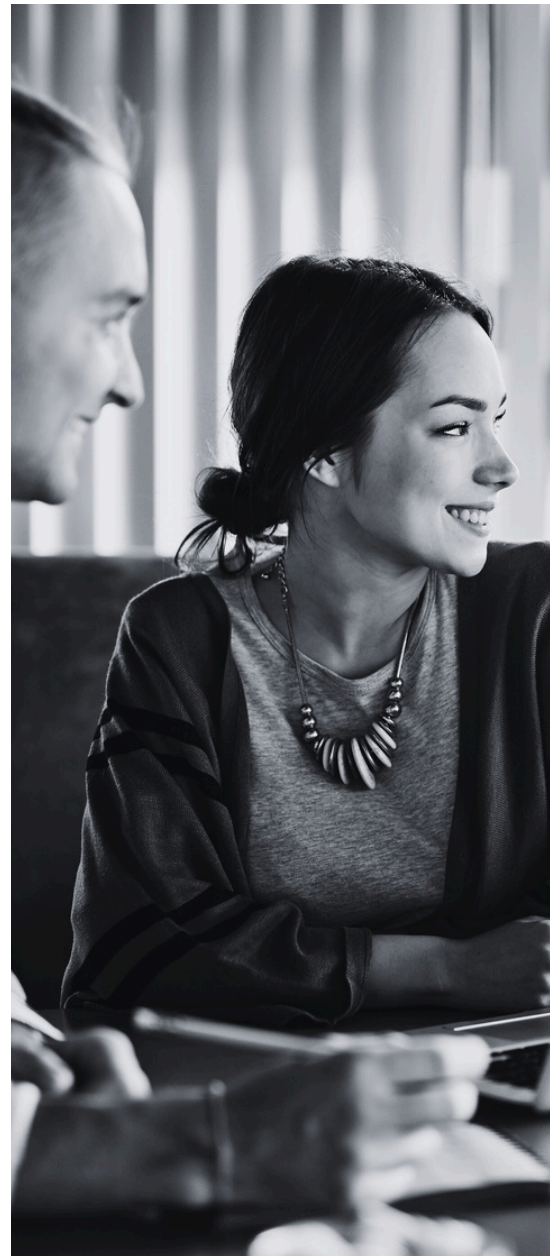
- Total Volunteer Hours: **2,832.3 hours**, including **109 hours of telephone support**.
- Despite some volunteers being unable to work certain months due to illness, their collective contributions were immense, demonstrating their unwavering commitment to our mission.



NEW VOLUNTEERS

This year, we welcomed three new volunteers:

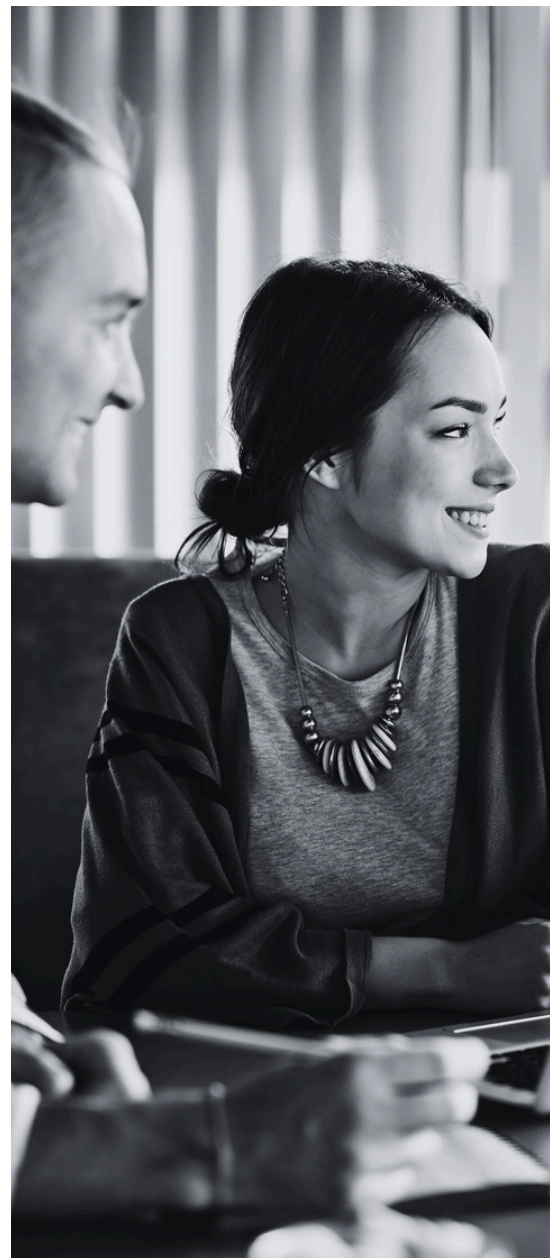
- **Media and Surveys:** Assisting with surveys and helping raise awareness of our services through media outreach.
- **Administration:** Offering vital support to ensure the smooth running of our operations.
- **Emotional Support:** Providing one-on-one emotional support to survivors, helping them navigate their trauma in a safe, non-judgmental space.



VOLUNTEER DEVELOPMENT

Recognising the emotional toll that supporting survivors can take, we introduced **supervision, reflective practice, and peer support group sessions for our volunteers**. These initiatives help safeguard their well-being, ensuring they can continue to provide the compassionate care survivors rely on while preventing burnout.

We are immensely proud of our volunteers, whose passion for giving back, often as part of their own recovery journeys, has positively influenced the lives of countless survivors. Their collective efforts have brought hope, healing, and strength to both the individuals we support and the wider community.



FINANCIAL OVERVIEW

OPENING BALANCE

Total (Carried Forward)	£31,266.54
--------------------------------	-------------------

INCOME

Grants/Fundraising	+£3,210.74
--------------------	-------------------

EXPENDITURE

Total Expenses	-£25,574.94
----------------	--------------------

CLOSING BALANCE

Total	£8,902.34
--------------	------------------

Despite the many challenges, we are proud of the financial stewardship that allows us to continue our work.

We remain deeply grateful to all those who have supported us financially - your contributions allow us to continue our mission of healing and hope

FINANCIAL OVERVIEW

EXPENSES	TOTAL
IT Expenses	£1,914.99
Wages	£5,400.00
Equipment	£386.94
Telephone	£1,119.51
Insurance	£700.89
Marketing and Advertising	£-
Training and Resources	£1,280.50
Rent	£6,381.83
Volunteer Expenses	£3,325.85
Programme Expenses	£1,581.02
Travelling Expenses	£1,748.47
Subscriptions	£398.58
Office Expenses, Repairs and Maintenance	£1,336.36
TOTAL INCOME	£25,574.94

INCOME	TOTAL
Donations	£3,210.74
Grants	£-
Programme Service Revenue	£-
Event Revenue	£-
TOTAL INCOME	£3,210.74
NET PROFIT/LOSS	-£22,364.20



VOLUNTEER HOURS	2832.5
MOBILE PHONE SUPPORT HOURS	109

STRATEGIC FOCUS - 2024

As we look ahead, our focus remains on growth and deepening our impact. In 2024, we plan to:

- **Expand our services** to reach even more survivors, both locally and nationally.
- **Accredit our Personal Development and Recovery Program**, ensuring it continues to be a gold standard in survivor care.
- **Strengthen our volunteer training**, providing ongoing education and support to ensure our team can meet the complex needs of those we serve.
- **Secure additional funding** to maintain and expand our programs, ensuring that no survivor is turned away.



Support for Survivors

Profit & Loss Statement 2023

Income	January	February	March	April	May	June	July	August	September	October	November	December	Total
Donations	£ 177.03	£ 329.50	£ 24.00	£ 88.76	£ 48.50	£ 25.50	£ 574.00	£ 42.93	£ 1,401.35	£ 27.18	£ 25.50	£ 446.49	£ 3,210.74
Grants	£ -	£ -	£ -	£ -	£ -	£ -	£ -	£ -	£ -	£ -	£ -	£ -	£ -
Programme Service Revenue	£ -	£ -	£ -	£ -	£ -	£ -	£ -	£ -	£ -	£ -	£ -	£ -	£ -
Event Revenue	£ -	£ -	£ -	£ -	£ -	£ -	£ -	£ -	£ -	£ -	£ -	£ -	£ -
Gross Revenue	£ 177.03	£ 329.50	£ 24.00	£ 88.76	£ 48.50	£ 25.50	£ 574.00	£ 42.93	£ 1,401.35	£ 27.18	£ 25.50	£ 446.49	£ 3,210.74

Operating Expenses	January	February	March	April	May	June	July	August	September	October	November	December	Total
IT Expenses	£ 123.66	£ 52.29	£ 52.29	£ 242.28	£ 83.28	£ 372.29	£ 52.29	£ 132.29	£ 192.07	£ 341.28	£ 87.68	£ 183.29	£ 1,914.99
Wages	£ -	£ -	£ -	£ -	£ -	£ -	£ -	£ -	£ 1,520.00	£ -	£ 3,880.00	£ -	£ 5,400.00
Equipment	£ -	£ -	£ -	£ 59.00	£ -	£ 10.98	£ -	£ 147.96	£ 169.00	£ -	£ -	£ -	£ 386.94
Telephone	£ 62.60	£ 156.70	£ 62.60	£ 132.81	£ 62.60	£ 145.35	£ 62.60	£ 132.60	£ 39.60	£ 81.10	£ 94.60	£ 86.35	£ 1,119.51
Insurance	£ 700.89	£ -	£ -	£ -	£ -	£ -	£ -	£ -	£ -	£ -	£ -	£ -	£ 700.89
Marketing and Advertising	£ -	£ -	£ -	£ -	£ -	£ -	£ -	£ -	£ -	£ -	£ -	£ -	£ -
Training and Resources	£ -	£ -	£ -	£ -	£ -	£ 1,187.00	£ -	£ -	£ -	£ -	£ 93.50	£ -	£ 1,280.50
Rent	£ 1,110.68	£ -	£ -	£ -	£ -	£ 1,880.29	£ -	£ 1,976.60	£ -	£ -	£ 1,381.76	£ 32.50	£ 6,381.83
Volunteer Expenses	£ 26.64	£ 296.61	£ 195.35	£ 432.37	£ 49.54	£ 285.22	£ 181.39	£ 384.28	£ 513.71	£ 172.25	£ 359.46	£ 429.03	£ 3,325.85
Programme Expenses	£ 149.75	£ 286.23	£ 360.00	£ 91.04	£ 15.00	£ -	£ -	£ 679.00	£ -	£ -	£ -	£ -	£ 1,581.02
Travelling Expenses	£ 174.56	£ 119.25	£ 45.00	£ 357.26	£ -	£ 201.69	£ 44.16	£ 268.25	£ 492.00	£ 46.30	£ -	£ -	£ 1,748.47
Subscriptions	£ 128.26	£ 32.38	£ 25.79	£ 25.79	£ 25.79	£ 25.79	£ 25.79	£ 16.80	£ 16.80	£ 16.80	£ 16.80	£ 16.80	£ 398.58
Office Expenses, Repairs and Maintainance	£ 105.58	£ 114.31	£ 163.75	£ 86.33	£ 50.75	£ 43.46	£ 108.33	£ 184.16	£ 63.64	£ 155.91	£ 166.40	£ 93.74	£ 1,336.36
Total Expenses	£ 2,582.62	£ 1,057.77	£ 904.78	£ 1,426.88	£ 3,354.25	£ 1,084.78	£ 2,442.17	£ 1,979.32	£ 3,006.82	£ 813.64	£ 6,080.20	£ 841.71	£ 25,574.94

Net Profit/Loss	-£ 2,405.59	-£ 728.27	-£ 880.78	-£ 1,338.12	-£ 3,305.75	-£ 1,059.28	-£ 1,868.17	-£ 1,936.39	-£ 1,605.47	-£ 786.46	-£ 6,054.70	-£ 395.22	-£ 22,364.20
------------------------	--------------------	------------------	------------------	--------------------	--------------------	--------------------	--------------------	--------------------	--------------------	------------------	--------------------	------------------	---------------------

Bank Balance	January	February	March	April	May	June	July	August	September	October	November	December
Opening Balance	£ 31,266.54	£ 28,860.95	£ 28,132.68	£ 27,251.90	£ 25,913.78	£ 22,608.03	£ 21,548.75	£ 19,680.58	£ 17,744.19	£ 16,138.72	£ 15,352.26	£ 9,297.56
Closing Balance	£ 28,860.95	£ 28,132.68	£ 27,251.90	£ 25,913.78	£ 22,608.03	£ 21,548.75	£ 19,680.58	£ 17,744.19	£ 16,138.72	£ 15,352.26	£ 9,297.56	£ 8,902.34

Hours	January	February	March	April	May	June	July	August	September	October	November	December	Total
Volunteers	286.2	277.7	250.5	153.1	363.1	347.8	141.5	214.5	233.4	227.5	142.8	194.5	2832.3
Staff	0.0	0.0	0.0	0.0	0.0	0.0	0.0	0.0	0.0	0.0	0.0	0.0	0.0
Total Hours	286.2	277.7	250.5	153.1	363.1	347.8	141.5	214.5	233.4	227.5	142.8	194.5	2832.3

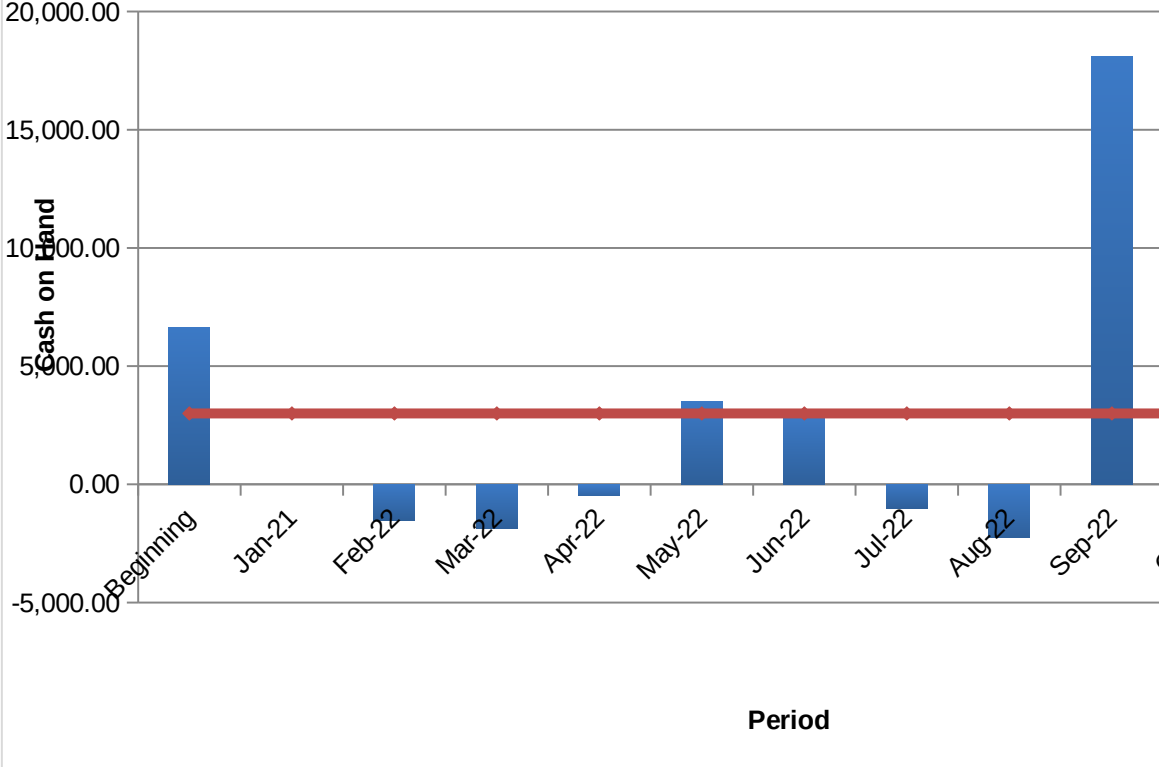
Mobile Phone Hours	January	February	March	April	May	June	July	August	September	October	November	December	Total
Volunteer Phone Hours	5.0	6.2	7.7	16.5	2.7	7.7	9.3	7.2	11.4	11.0	11.4	10.7	106.8
Total Hours	5.0	6.2	7.7	16.5	2.7	7.7	9.3	7.2	11.4	11.0	11.4	10.7	106.8

SUPPORT FOR SURVIVORS

England & Wales - Charity number 1165986

Accounts

Cash Flow Projection Company Name



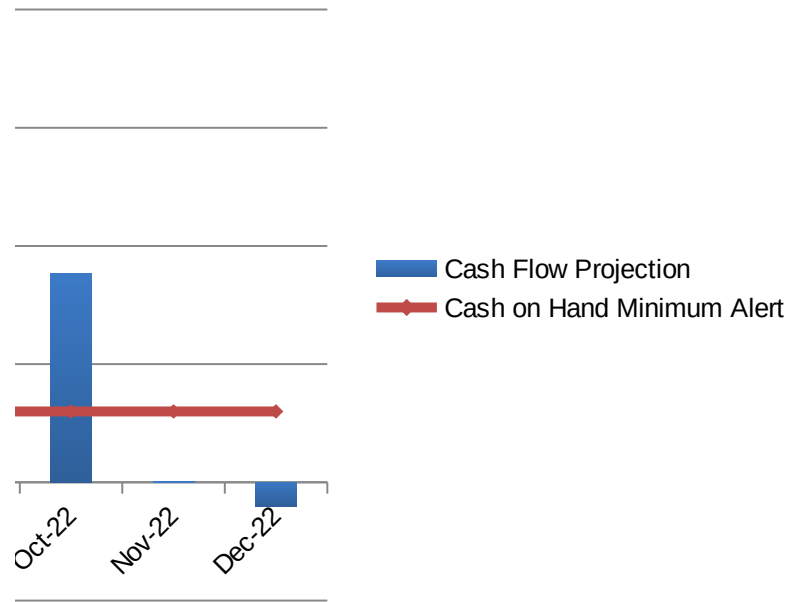
Combination chart showing Cash on Hand Minimum Alert and C

Cash balance alert minimum

\$3,000

ion

!



Cash Flow Projection is in this cell.

SUPPORT FOR SURVIVORS

England & Wales - Charity number 1165986

Accounts



31st/12/2020 -
31/12/2021

Yearly Annual Report

Support for Survivors is a Charity - a CIO (registered
Charitable Incorporated Organisation number 1165986).



*We believe it's important to talk,
and listen why?
Lack of early interventions can
or will leave devastating impacts,
Emotionally, Physically,
Mentally,
and Socially on the lives of
Victims and Survivors, their
families, and
Their way forward within our
Communities and society as a
whole!*

Report Prepared by Maxi 'Leigh Founder Care Services Director
&
Jez Taylor Chairman

Charity Status Granted by Charity Commission 10/03/2016
Registered Charity 1165986 CIO
Self Help Group set up 25/05/2014

Support for Survivors Charity Board of Trustees Effective from 31st
December 2020 to 31st December 31sts 2021

- | | |
|-------------------------|------------------------------------|
| • Jeremy Taylor | Chairman |
| • Chris Gibbon | Secretary |
| • Maxi 'Leigh | Founder Managing Director & acting |
| • Joseph Anthony Curtis | Treasurer |
| • Sara Orme | Trustee |
| • Zena Sanigar | Trustee |
| • Dannielle Harris | Trustee |
| • Debbie Heath | Trustee |

We provide support to male and female Victims & Survivors aged 18 plus, suffering from a multitude of several types of childhood abuse & experiences. They may have been subjected to either sexual, physical, emotional, neglect, incest abuse, and or rape, especially if the abuse continued into adulthood, this type of sexual violence, in most cases familial abuse, i.e. (blood father, mother, brother, sister) etc.

Our purpose is to provide positive pro-active progression pathways into education, training, coaching, mentoring volunteering and befriending, or back into part time or full-time employment. Our "Peer" help & support to maintaining their place within their communities and society as a whole.

Delivery of continual Survivor Personal Development & Recovery, Survivor management programmes, and Parenting, studying the impacts on the effects childhood abuse and trauma, and how this impacts on the victims & survivor's adult life, relationships, family & parenting. We have been able to identify all, lack self-confidence, self-esteem, self-worth, awareness, and assertiveness, through trust and continuity we help to focus on compassion and empathy with positive encouragement and goals as they slowly recover from their traumatic experiences, mental, physical health & wellbeing. We have identified some can go on to enjoy happy and independent lives, although not everyone recovers, especially those victims & survivors who fit into our elderly generation or have suffered many years behind closed doors without interventions. We have been particularly successful with how we support our beneficiaries with learning disabilities, who are very scared and fearful, are befriended, not being judged has a positive influence, now live engaging lives.

Everyone is at a different stage and journey with their healing and recovery process.

What do we Deliver ?

We actively reduce the distress of victims & survivors aged 18 plus of childhood non-recent abuse through a range of 'Peer' led interventions.

- Support groups
- 1-2-1 support
- Family mediation
- Focus groups
- Female drop-in
- Male drop-in
- Mixed group drop-in
- Creative Arts & Crafts Quarter
- Advocacy support
- Outreach & Intervention
- Chaperone & support with Police intervention.
- Legal referrals
- Magistrates, Civil & Crown court advocacy support
- Child Protection support & intervention
- Advocacy support with housing, benefits, welfare advice
- Homeless advocacy support

- Referral support to drug, alcohol, and self-harming programmes
- 14-week Survivor 'Personal Development Recovery Programme'
- Survivor 'Management' Programme
- 12-week Strengthening Families Strengthening Communities inc. parent programme
- Wellbeing & Wellness programmes
- Financial support
- Housing support
- S4S 'Peer Support Volunteer & Befriending' training programme
- Coaching and Mentoring
- Adult learning educational programmes

Since opening our doors in 2014 to the end of 31st December 2021 Registered on our books are **368 male & female** victims & survivors, up **15 men and 30 women (45 referrals in total** for the year ending). Again we feel this figure should have been higher, receiving less referrals throughout the Covid-19 Pandemic for the second year. What was interesting we were inundated with National Referrals covering all England, Wales, Scotland, USA, Spain, and India.

Referrals are as follows:

<u>Referrer</u>	<u>Referred</u>
Wellness in Mind	01
Social Prescribing Framework	08
NHS GP Surgery	01
NHS Perinatal	16
Nottinghamshire Mental Health Care Trust	01
Equation	01
Mind	01
Employer	02
Website	05
Self	07
Email	01
Total Referrals	45

We Support victims & survivors throughout the East Midlands.

Our eldest referral born 1959 (compared to 2020 born in 1949) and our youngest were born 2000 and 2022 (compared 2001).

We had Five active volunteers, (**compared to seven in 2020**) who worked over & beyond as always. Recovering from their own personal

journeys, with our victims and survivors personal development and recovery program, mentoring, coaching, and training programmes. Our Peer Support team help and support our beneficiaries, and we make sure everyone who is referred into our Charity is in a safe and non-judgemental environment. .

Our Charities model is based on Empowerment, it's important everyone has a choice of support delivery and what suits them. Everyone is different, everyone's healing and recovery is at their own pace, with no time limits. Many make new friendships, many are no longer alone, our principal elements are building ones self-esteem, confidence, self-worth, awareness, assertiveness, and empowerment.

I would like to say thank you to our five volunteers, including our new Counselling & Psychotherapist female Volunteer for all your dedication, empathy, compassion, and positive influences.

Our volunteers worked 5484 hours 30 minutes

Compared with 2020 5143 hours and 38 minutes even though we were two less volunteers.

21,391.01 minutes telephone befriending service.

To date we have no paid staff on our books.

Ethnicities

Polish decent	01
Black British Caribbean	03
Black African	01
White British	39
White Irish	01
Total	45

Advocacy Support & Educational Programmes

Throughout Covid-19 we were still unable to support our services users in person, although we did still support with front line services and outreach this was mainly delivery of prescriptions, food parcels, shopping, and clothing, or just socially distancing from their front door, many still struggled with isolation.

Supporting our beneficiaries online with emotional support, our male

survivors benefited greatly with our male mental health and talking online support group.

For the first time we have been involved with food banks delivering to fifteen of our beneficiaries, normally approx. 3 bags per person.

Outside Referrals for Further Support

We made,

DWP Tribunal	01	Bac-in drugs & alcohol support	02
GP Services	05	DWP mandatory reconsideration	01
PiP & change of circumstances	01	Opportunity Nottm - homeless support	01
Instalaw Solicitors	02	NHS Female Clinic	01
Rehab / Framework	01	Bedfordshire Police	02
Dwp telephone assessment support	04	Notts County Council Adult safeguarding concern	01
Notts County Council Children's safeguarding concern	01		
	17		9

Donations Fundraising & Grants Received.

Carried Forward	£ 13217.56
Donations	£ 1523.29
Refunds	£ 109.16
Nottinghamshire County Council Commissioning & Adult Social Care	£ 1200.00
Easy Fundraising	£ 92.26
Amazon Smile	£ 123.23
PayPal	£ 12.01
Gedling Lotto	£ 130.00
HP Recycle for Charity	£ 47.25
SOS Charity Fashion Show	£ 2185.64
Warburton's	£ 400.00

Arnold Clark	£1000.00
Total year ending 2021	<u>£20040.40</u>

Sincere thanks to all of you who have helped to continue the vital help and support required for 'Support for Survivors Charity ' in helping our male and female survivors of non-recent abuse.

We are delivering services from the **Sherwood Community Centre, 'Woodthorpe House' Mansfield Road, Sherwood, Nottingham, NG5 3FN**, and what a wonderful experience it still is, being community orientated. We would like to say a massive thank you Alison (Admin) Unfortunately Kevin our Centre Manager died from Cancer, R.I.P The center still is very supportive as a whole, Thank you Jill Chair of the Sherwood Community Centre, she has been very supportive, it is a warm community center and one where we are all supportive of one another to ensure all who access our Centre are within a safe and non-judgmental environment, obviously throughout the lockdown our center was closed, with all working from home.

We closed our offices March 13th, 2020, not returning until mid-21. Sadly, two male survivors died, one from Cancer and the other died from heart failure.

Otherwise, everyone was safely supported throughout. Still continuing with telephone and zoom support whilst in lockdown. We were able to access many online training courses, this has saved travel time and is cost effective. Whilst ensuring all our volunteers were supported with their personal needs, their mental health and wellbeing whilst working from home. As peers we supported one another again through zoom and telephone, so no-one felt alone, especially those of us living alone.

Luckily, we were still able to partner with Nottingham Trent University throughout the pandemic. Through in-house data we are able to identify impacts at point of assessment. We also involve our service users to collaborate if they would like to input in an area that they feel needs addressing and researching. We have been collaborating together now for five years. NTU students were able to showcase their conference research findings via zoom.

Maxi stepped down from the the Survivors Advisory Panel for the Roman Catholic Church with most of the team, to create their own training brand for the Catholic Church, and still with the National Survivors Reference group Church of England. On her Birthday in January, she received a phone call from the Chair of 'The National Safeguarding' CofE, inviting her to be a part of the team and I gladly accepted.

November 2021 Maxi held our first Charity fashion show in her village where she lives. We had approximately 120 women who came with their own food and canapés, and what a remarkable success the night was indeed. Raising £2185.64 it was a fantastic evening and event, thank you to our ladies from the Charity and Maxi's neighbors who wanted to be involved from the village with £500.00 donated to Breast Cancer.

We are so honored and humbled to be able to support 'Support for Survivors' victims & survivors, who were once boys and girls sexually, physically, emotionally, abused in childhood.

We would like to thank all our partners who we refer to, and who refer to 'Support for Survivors.' There are some remarkable people in our communities working over and beyond Thank You.

Most of all thank you to all our Trustees who have supported us throughout as we grow and further develop. Most of all and not forgetting our remarkable male and female survivors of childhood abuse, and their families.

You are surviving and thriving!

*Maxi 'Leigh
Founder/ Managing Director*

*Jez Taylor
Chair*

Financial Year Ending 31/12/2021 Support for Survivors Charity

Starting date

Cash balance alert minimum

	Beginning	Jan-21	Feb-21	Mar-21	Apr-21	May-21	Jun-21	Jul-21	Aug-21	Sep-21	Oct-21	Nov-21	Dec-21	Total
Cash on hand (beginning of month)	13,217.56													
CASH RECEIPTS														
Grant/Funding								1,000.00				400.00		1,400.00
Service User Direct Payment NCC								1,200.00					1,200.00	1,200.00
Donars		18.00	18.00	18.00	18.00	18.00	18.00	18.00	18.00	18.00	18.00	18.00	18.00	216.00
Donations			107.29			200.00			1,000.00					1,307.29
Amazon			12.64				7.17			14.11		15.38		123.23
Paypal						1.00	0.01	10.00		1.00				12.01
Gedling Lotto						1.50	17.00	16.50		14.00		17.50	20.00	130.00
Easy Fundraising				33.26					59.00					92.26
HP Recycle For Charity												47.25		47.25
Refunds		15.17	64.99						29.00					109.16
Fashion Show Fundraising										295.90	333.52	677.65	878.57	2,185.64
TOTAL CASH RECEIPTS														20,040.40
Total cash available	Err:507	33.17	202.92	51.26	18.00	227.67	35.01	2,244.50	1,135.11	346.78	417.27	1,175.63	2,135.52	


	Jan-21	Feb-21	Mar-21	Apr-21	May-21	Jun-21	Jul-21	Aug-21	Spt 21	Oct-21	Nov-21	Dec-21	Total	
CASH PAID OUT													0	
Advertising & Promotions													0.00	
Volunteer training	30.00		25.00										55.00	
Volunteer Resources/Training		58.89					12.96	2.50		25.98			100.33	
Miscellaneous		1.00	0.20					2.37					4.57	
Supervision	105.00	60.00		97.50			1.00						262.50	
Facilitator re Educational Programs	630.00	730.00	360.00									370.00	180.00	2,270.00
Insurance (other than health)	13.48	645.05	8.49		8.49	8.49	8.49	33.49	8.49	8.49	8.49	8.49	8.49	768.43
Motor - Parking - Travel		4.40		30.00				27.60	9.50	120.01	7.20	36.60		235.31
Crafts supplies & materials								13.99	78.91	2.70	30.31			133.40
IT & Internet subscriptions	417.05	13.80	28.19	79.79	13.80	13.80	70.45	50.79	291.48	13.80	294.38	13.80		1,301.13
Meals-Events-Hotel-Entertainment			33.52	6.00				70.50	137.52	£ 308.61				165.46
Room hire												65.00		26.00
Mental health & wellbeing										36.00				33.62
Gifts										58.00				170.93
Volunteer Expences	406.76	332.11	208.69	194.79	102.23	281.29	333.96	310.76	364.17	103.43	524.10	209.63		3,371.92
Stationery	16.17	3.00	16.44	18.50	10.35		13.98	13.57						129.81
Printing	102.25	13.48	17.46	15.47	31.96		112.96	39.96	172.33	36.96	39.96			628.75
Rent							325.53		651.06					2,278.71
Fundraising												651.06	651.06	2,278.71
Repairs and maintenance												280.69		280.69
Supplies - Cleaning							7.98							7.98
Broadband & Telephone expense	31.50	31.50	31.50	32.50	36.63	47.53	38.50	38.50	38.50	38.50	38.50	38.50	40.50	444.16
Travel & Carparking														0.00
Postage	18.12	8.61	16.62				62.36	3.23	18.12					145.18
Lunchs/refreshments/drop-in & Vol		10.10	40.98	132.30	65.54	64.38	31.83	76.79	54.84	35.10	54.49	97.56		663.91
Fixtures & Fittings														0.00
Events & Meetings														0.00
Subscriptions & Memberships								7.99	7.99					15.98
Mobile phones	74.74	83.28	80.39	20.78	36.99	53.63	53.63	53.63	53.63	59.58	53.63	53.63	53.63	677.54
Fixed asset Office Equipment	52.99	20.00			48.47	7.95	23.95	201.80	19.00		19.99	19.50		413.65
SUBTOTAL	1,898.06	2,015.22	867.48	636.12	362.44	978.92	638.93	1,768.27	1,132.99	850.16	2,481.60	1,732.39		15,362.58
Column1	Jan-20	Feb-20	Mar-20	Apr-20	May-20	Jun-20	Jul-20	Aug-20	Sep-20	Oct-20	Nov-20	Dec-20		Total
Loan principal payment														0
Capital purchases								105.91						-105.91
Other startup costs														0
To reserve and/or escrow														0
Cash withdrawal											5.00		20.00	25.00
TOTAL CASH PAID OUT		1,898.06	2,015.22	867.48	636.12	362.44	978.92	744.84	1,768.27	1,132.99	855.16	2,481.60	1,752.39	16,149.68
Cash on hand (end of month)	13,217.56	-1,864.89	-1,812.30	-816.22	-618.12	-134.77	-943.91	1,499.66	-633.16	-786.21	-437.89	-1,305.97	383.13	

Column1	Column2	Column3	Column4	Column5	Column6	Column7	Column8	Column9	Column10	Column11	Column12	Column13	Column14
Date													0
													Err:507
													Err:507
													Err:507
													Err:507
													0

SUPPORT FOR SURVIVORS

England & Wales - Charity number 1165986

Accounts

 *31st December*
2020:
Annual Report

Support for Survivors is a Charity - a CIO (registered Charitable Incorporated Organisation number 1165986).



Support For Survivor

A Registered Charity supporting Male & Female SURVIVORS of
Childhood Sexual/Physical/Psychological/Incest Abuse & Rape

YOU ARE NOT ALONE

*Report year
ending
01/01/2020
to
31/12/2020*

*We believe it's important to
talk, and listen, why?
Lack of early interventions can
and will leave devastating
impacts and behaviors on
victims and survivors lives with*

Emotional Health

Physical Health

Mental Health

Report Prepared by Maxi 'Leigh Founder Care Services Director
&
Jez Taylor Chairman

Charity Status Granted by Charity Commission 10/03/2016
Registered Charity 1165986 CIO
Self Help Group set up 25/05/2014

Support for Survivors Charity Board of Trustees Effective for the reporting year:

- | | |
|-------------------------|---|
| • Jeremy Taylor | Chair |
| • Chris Gibbon | Trustee / Secretary |
| • Maxi 'Leigh | Trustee (Founder / Care Service Director) |
| • Joseph Anthony Curtis | Trustee |
| • Sara Orme | Trustee |
| • Zena Sanigar | Trustee |
| • Dannielle Harris | Trustee |
| • Debbie Heath | Trustee |

We provide support to male and female victims & survivors aged 18 plus, who have suffered from a multitude of several types of childhood abuse & experiences. They may have been subjected to either sexual, physical, emotional, neglect, incest abuse, & rape, especially if the abuse continued into adulthood, this type of sexual violence, in most cases familial abuse, i.e. (blood father, mother, brother, sister) etc.

Our purpose is to provide positive pro-active progression pathways into education, training, coaching, mentoring volunteering and befriending, or back into part time or full-time employment. With help & support in maintaining their place within their communities and society as a whole.

Delivery of continual Survivor Personal Development & Recovery, Survivor management programmes, and Parenting, studying the impacts on the effects childhood abuse and trauma, and how this impacts on the victims & survivor's adult life, relationships, family & parenting. We have been able to identify all lack self- confidence, self -esteem, self-worth, awareness & assertiveness, through trust and continuity we help to focus on compassion and empathy with positive solutions as they slowly recover from traumatic experiences, mental, physical health & wellbeing. We have identified those who have suffered mentally & physically can go on to enjoy happy and independent lives, although not everyone recovers, especially those victims & survivors who fit into our elderly generation, and those learning disabilities who have carried their traumas for most of their lives. Everyone as we know is at a different stage when we look at one's recovery process.

What do we Deliver ?

We actively reduce the distress of victims & survivors aged 18 plus of childhood non-recent abuse through a range of 'Peer' led interventions.

- Support groups
- 1-2-1 support
- Family mediation
- Focus groups
- Female drop-in
- Male drop-in
- Mixed group drop-in
- Creative Arts & Crafts Quarter
- Advocacy support
- Outreach & Intervention
- Chaperone & support with Police intervention.
- Legal referrals
- Magistrates, Civil & Crown court advocacy support
- Child Protection support & intervention
- Advocacy support with housing, benefits, welfare advice
- Homeless advocacy support
- Referral support to drug, alcohol, and self-harming programmes
- 14-week Survivor 'Personal Development Recovery Programme'
- Survivor 'Management' Programme
- 12 steps 'Survivor' programme

- 12-week Strengthening Families Strengthening Communities inc. parent programme
- Wellbeing & Wellness programmes
- Financial support
- S4S 'Peer Support Volunteer & Befriending' Programme
- Coaching. Mentoring & Training
- Adult learning programmes
- Advocacy support with NHS appointments

Since opening our doors in 2014 to the end of 31st December 2020 we are now supporting **332 male & female** victims & survivors, up **16 men and 27 women (43 in total)** for the year ending). This figure should have been higher, receiving less referrals throughout the Covid-19 Pandemic.

Referrals are as follows:

<u>Referrer</u>	<u>Referred</u>
East Midlands Homes Co-Operative	02
Metropolitan Housing Inclusion Framework	01
GP Surgery (NHS)	01
Let's Talk Wellbeing (NHS)	01
Psychiatrist (NHS)	01
Highbury Hospitals (NHS)	01
Crisis Team (NHS)	01
CPN (NHS)	01
Wellness in Mind	03
ISAS	01
Double Impact	01
Friary	01
Equation	01
Website	04
Email	02
Staff & Networking	09
Self-Referral	05
Family Member	01
Girlfriend	02
Boyfriend	01
Friend	02
	43 in total referrals in 2020

2020 we supported victims & survivors covering a wide area, receiving referrals from outside of the East Midlands, this included two male

survivors from Newcastle and Milton Keynes, one of who we are still supporting via zoom facetime, two survivors from Derbyshire, one survivor from Lincoln, seven survivors from Mansfield, one survivor from Chesterfield, 30 survivors referred from Nottingham City and County.

The eldest referrals were two survivors born in 1954 and 1959 (compared to 2020 with one being born in 1949) our youngest were born 2000 and 2002 (compared 2020 one born in the year 2001).

We had seven active volunteers, (**compared to nine in 2020**) who worked over & beyond as always, their inner passion giving back from their own recovery journeys, and succeeding with our mentoring, coaching, and training programmes, you help and support our service users with empathy and compassion, you never tire of listening and I would like to personally say thank you for your dedication, passion, and positive influences by giving hope to our service user's lives.

Our volunteers worked 5143.38 (five thousand one hundred and forty-three hours, 38 minutes). Compared to 2020 with 4892 hours and 71 minutes even though we were two less volunteers. To date we have no paid staff on our books.

Ethnicities

Asian Pakistani	01
Black British Caribbean	02
Mixed Race	04
White British	35
White Italian	01
Total	43

Advocacy Support & Educational Program's

Throughout Covid-19 we were unable to support our services users in person, although we did still support with front line services and outreach this was mainly delivery of prescriptions, food parcels, shopping, and clothing, or just socially distancing from their front door, many struggled with isolation. We had one female homeless and worked tirelessly to get a roof over her head, this female did try to jump off Nottingham Trent Bridge. Being the first responders we were able to liaise with The Nottingham Law Centre, Nottinghamshire Police, Triage Team, Housing Aid, and mental health services all working together for a victims and survivors positive outcomes.

- Female one-to-one's, we held **43** sessions and **97** male session.
- Digital facetime support included either Skype or Zoom with 24 female and 15 men supported online. Many did not like using this method, with this in mind our telephone befriending support in place of face-to-face skyrocketed.
- Equating to **16829** minutes telephone support.
- We held **97 female** drop-ins with **25 male** drop-in sessions and **47** mixed drop-ins, **169 service users** accessing and building on friendships, creative arts, and crafts and some just coming for a cup of tea/coffee and chat.
- Pre Covid-19 we supported **41** service users with outreach advocacy support, through Covid-19 we supported **46** service users, as explained above. 87 outreach in total.
- Safer Families, Safer Communities Parenting Program started, we facilitated **9 out of 3 previous years** sessions totaling **119** who accessed in total.
- Our successful 'Support for Survivors Personal Development & Recovery Program, this has been phenomenal and life changing, with some moving forward to our Volunteer Program Maxi created but we have co-piloted with those attending and shall be looking to have this program accredited. We held **ten** (Pre Covid-19) PDP workshops with **12** service users attending each session and graduating the 14wk workshop, and throughout the pandemic we held **14** zoom workshops with **eight** attending each throughout. (Congratulations)

OUTSIDE REFERRALS

We made,

Trent PTS	10	Nottm Homeless Housing	02
Let's Talk Wellbeing	02	National Refuge	01
ISAS	02	Framework	01
SVS	01	Metropolitan Housing	01
Wellbeing Hub	01	East Midlands Homes	02
Harmless	01	Nottinghamshire Police	02
GP	44	Truth Project	10
Adult Social Care	12	Adult Safeguarding	01
St. Peters Church	01	Nottingham Law Centre	01
Bhatia Best Solicitors	01	Instalaw Solicitors	10
ESA	02	Personal Independence	46

		Payment (PIP)	
Capability for Work	01	Bank Debt Support	02
		Total Referrals Out	157

Donations Fundraising & Grants Received.

Beneficiary	£ 298.00
Refunds	£ 80.95
Nottinghamshire County Council Commissioning & Adult Social Care	£ 3685.00
Easy Fundraising	£ 102.06
National Lottery Awards & Covid Response	£ 9700.00
Fundraising	£ 1435.24
Donations	£ 75.00
Nottinghamshire County Council Covid Response	£ 4000.00
Mick Pringle Notts County Cllr	£ 500.00
Thomas Farr Charity	£ 2000.00
Total	<u>£21913.4</u> <u>2</u>

Sincere thanks to all of you who have helped to continue the vital help and support required for 'Support for Survivors Charity ' in helping our male and female survivors of non-recent abuse.

*We are delivering services from the **Sherwood Community Centre, 'Woodthorpe House' Mansfield Road, Sherwood, Nottingham, NG5 3FN**, and what a wonderful experience it still is, being community orientated. We would like to say a massive thank you to Kevin (Centre Manager) & Alison (Admin) who have been extremely supportive to us, and also to Jill Chair of the 'Sherwood Community Centre, she has been very supportive, it is a warm community center and one where we are all supportive of one another to ensure all who access our Centre are within a safe and non-judgmental environment, obviously throughout the lockdown*

our center was closed, with all working from home.

We closed our offices March 13th, 2020, because of lockdown, it was a very hectic time for us all, daunting not knowing how this would impact us not only as a Charity but individually. Unfortunately, I lost a very close family member, a friend who I grew up with and one of my colleagues who I became close to from the National Catholic Safeguarding Commission who appointed me. This loss and devastation has been just horrendous and so for many others. Thank goodness we did not lose one of our service users, all were safely supported throughout. We were able to change our practices of support and adult educational programs via Zoom digital facetime and more so via telephone support. We were able to access much online training courses, this has saved travel time and has been cost effective. Ensuring all our volunteers were supported with everything required to support them whilst working from home, and also their mental health and wellbeing was also vital and we were able to support one another again through zoom and telephone, so no-one felt alone, especially those of us living alone.

I nominated two volunteers throughout the pandemic for their outstanding work, one received gift vouchers from TKMaxx Hero's, and our other volunteer was hand delivered a case of wines from Naked Wines.

Luckily, we were still able to partner with Nottingham Trent University throughout the pandemic, with our in-house data identified at the point of assessment, but we also involve our service users if they would like to input in an area that they feel needs addressing and researching. We have been collaborating together now for four years. NTU students were this time able to showcase their conference research findings via zoom.

*There is now a new pilot project called '**Safe Spaces**', bringing both Church of England and Roman Catholic Churches together. Both Churches are now commissioning a national telephone helpline for victims and survivors. Maxi was able to be a part of the designing, commission procurement process, and selecting organizations for the pilot project, with many spent developing this project throughout. Victim Support is an independent charity and was chosen mid 2020 is independently run, and a free service for anyone abused in the Church.*

Maxi is still sitting on the Survivors Advisory Panel for the Roman Catholic Church and working with the National Survivors Reference group, although they are not as yet an affiliated board, this has been delayed because of the Covid-19 pandemic, but we have been active with speaking with Bishops of Canterbury and York regarding our concerns as survivors.

Maxi was asked to be one of the judges for Marsh Christian Trust & Mind Peer Fest 2020 awards and this is because Support for Survivors won an award 2019 for the Charities 'Innovation & Mental Health Peer Support' This was also a lengthy process with many fantastic peer support groups supporting all over the Country our vulnerable communities. This event

was held via digital media in December with awards going to some amazing peer support groups.

We are so honored and humbled being able to support, 'Support for Survivors' victims & survivors, who were boys and girls sexually, physically, emotionally, abused in childhood.

We would like to thank all our partners who we refer to, and who refer to 'Support for Survivors'. There are some remarkable people in our communities working over and beyond Thank You.

Most of all thank you to all our Trustees who have supported us throughout as we grow and further develop. Most of all and not forgetting our remarkable male and female survivors of childhood abuse, and their families.

You are surviving and thriving!

*Maxi 'Leigh
Founder Care Services Director*

*Jez Taylor
Chair*

