



BUILDING HOPE IN YOUNG PEOPLES LIVES



Bath
**YOUTH
FOR CHRIST**



Wiltshire
**YOUTH
FOR CHRIST**

Annual Report 2020/21

Contents

Director's Report	4
Schools Work	5
Accompanying	6
Timsbury	7
Riverside Youth Club	8
Southdown	9
Roundhill Hub	10
The Hive	11
Chaplaincy & Church Youth Work	12
Wiltshire	13
The People	14
Fundraising	15
Chair's Report	17
Treasurer's Report	17
Financial Report	18 & 19



Director's Report

This year we have taken the opportunity as staff, trustees, and young people to look at our strategy for the future. A number of interesting discussions allowed us to draw conclusions about the fundamental purpose of Bath Youth for Christ. We have always been passionate about working with every young person that we meet, whether that be in a youth club or a school setting. An integral part of the organisation is about sharing our Christian faith through providing youth sessions that build self-esteem and worth in young people. Through interaction and engagement, we seek to listen to young people, finding out their needs and helping them to identify how Christian hope can be built in their lives.

Our new vision for Bath Youth for Christ is
"Building hope in young people's lives."

Our mission is:

- Encourage Belonging
- Inspire Hope
- Build Community

We believe this strategy will help us work effectively in schools and youth projects as well as progress the Roundhill Hub project in Southdown.

We have connected with over **1,731** young people this year. We have also engaged with **441** young people **for the first time** through schools and youth work. Everything we do is about following God's leading and supporting young people across the city wherever they are in life, faith and their aspirations.

Dave Joyce

Building hope in young people's lives

ENCOURAGE BELONGING

INSPIRE HOPE

BUILD COMMUNITY

HOPE

Schools Work in Bath

Connect Mentoring

The 20/21 academic year was like no other we've ever experienced. With our team taking mentoring online, we were able to keep reaching and supporting young people through Lockdown 2 and beyond as they returned to school. We mentored over 40 young people, an increase on the previous year, which is indicative of the effect of the pandemic and lockdowns on young people.

As soon as possible we made our way safely back into schools to provide a more engaging and normal experience, with the added extras of masks, sanitising and lots of fresh air. It really was a blessing to stand alongside and support so many young people across 4 state schools in the city through an unprecedented challenging time for all.

Self-esteem courses

One of the knock-on effects of the various lockdowns during the year was the lack of opportunity for Year 7 pupils to form friendships. Schools noticed that girls appeared to lack the confidence and self-assurance needed to make friends. In response to this and at schools' request we developed and delivered a new self-esteem course for 6 separate groups. Along with the Shine project this helped us to

continue to support young females in recognising their worth, value and importance in today's world.

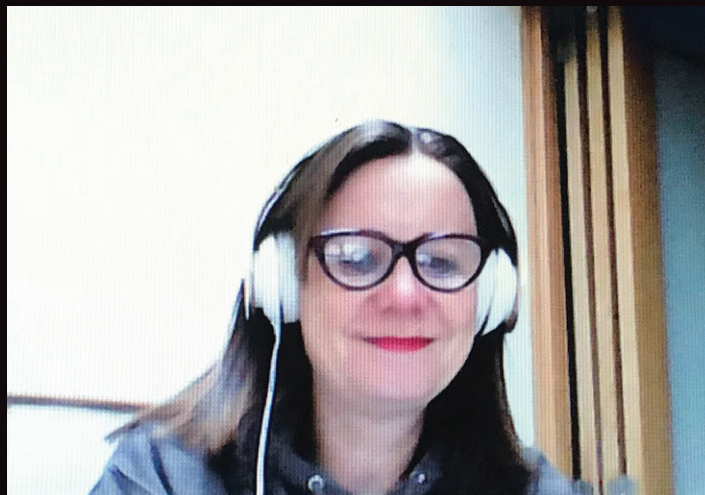
Assemblies

By December 2020 another lockdown precluded the opportunity to lead Christmas school assemblies. However, several schools expressed the desire to have a Christian Christmas message delivered to their young people. Eden and Katie, as well as Tim Rudge, youth worker at Life Church Bath, each made a short film of the Christmas message for schools to use. Combined, these films portrayed the message of Christmas and the reality of the season, that we are never alone.

Breakfast Club

The St Mark's Breakfast Club was not able to run during the year 2020-21. We are planning to restart in September 2021 offering free toast, cereal, tea & coffee. We are grateful to Waitrose, Co-op & Tesco for their contributions as well as some local individuals & St Luke's Church. Prior to Covid restrictions we would frequently have up to thirty children in The Sanctuary, and once word spreads, we hope to welcome back similar numbers.





The Accompanying Project

Despite the pandemic & school closures, there remained a need to support those pupils who were about to transition to the next stage of their education. St Saviour's Junior Church School & Batheaston Church Primary School requested that Sam Packer continue to provide such support through our Accompanying Project.

Although unable to physically go into the schools at first, a bit of creativity and Zoom allowed for the support to be delivered. Sam got into a routine of delivering a craft activity to pupils' homes in advance and the session was spent doing the activity "together" over the internet. Despite intermittent internet connections and slow computers, they all persevered.

In March, when pupils returned to school, it was so good to meet the children in person. Most importantly they were able to visit their respective Secondary Schools before starting in September.

A variety of craft activities - decorating a dinner plate with ceramic pens, making a Christmas wreath & Easter Chocolate Nest Cakes, clay, decorating a cloth shopping bag, map bunting, cross stitch sewing a Llama - and many games of Uno, Dobble & Four in a Row provided a focus which often allowed for great conversations to occur very naturally.

Once again, Sam acknowledges the privilege of spending time with those in their last year of Primary School, as well as meeting their families.

Sam Ludwell was able to continue to support one young person in Oldfield Junior School. Tapping into a love of reading, Sam helped her write and put together a fully illustrated 'book'. The transition to Hayesfield school was very successful with lots of positive feedback from her mum who had seen how much the young person had enjoyed the sessions and had really grown in confidence and decision making.

Psalms 121 v2 says "my help comes from the Lord, the maker of heaven & earth" and we have certainly experienced that help this year with all the challenges of the pandemic.

With Sam Packer's role for the next academic year changing as she takes on the position of School Chaplain at St Mark's Secondary, and Sam Ludwell diversifying the work of Motus Dance Academy, the Accompanying Project in Bath has come to a natural end. As a team we have helped so many children settle into their new schools & make that transition more bearable for which we are very thankful.

Timsbury Youth Work - The Power of Yes

"Can we have a 'Yes' day today?" Jane's youngest child asked her one morning. Her reply was "no!" – "every day is a yes day for you!" A 'yes day' is an idea gleaned from an American film where the parents have to say yes to everything their kids want for 24 hours.

But the truth is that there were a lot of 'no's' during the year: 'no you can't see your friends', 'no you can't go on your school trip', 'no you can't go to the play park or play tennis'.

"Yes" is a powerful word. "If you are willing you can make me clean," the leper says to Jesus in Luke 5 – Jesus says "Yes! I am willing". Throughout the gospels Jesus said yes to people, often those who least expected it, and we know that God says "yes" to us.

So, at Youth for Christ, it is our work to say "yes" to young people, in the best way. 'Yes, we believe in you', 'yes you matter', 'yes you can do it', 'yes we can help you'.

In April in Timsbury we were able to say, 'yes' we are going to start back with Friday night youth group, albeit in the park, and were later

able to say, 'yes we can go back inside for youth club'. In March, the local primary school said 'yes' to Jane to allow her to return. She was able to work with a group of Year 5 pupils exploring issues around Friendship and Resilience, as well as helping at lunchtimes and supporting Year 6 pupils transitioning to Secondary School. We were able to give them all the Scripture Union 'It's Your Move' booklet.

In June, we received a 'yes' from a grant funder to allow Jane to work towards running a Young Leader's Project. She is now looking for people to say, 'yes I'll volunteer to help!'

In July, we were excited to say 'Yes' we're starting the new Camerton group working with St Peter's church. It was amazing to connect with families from the local estate, none of whom would attend on Sundays.

We desire to be people who say 'Yes'. As Paul writes about Jesus, he was not "" Yes" and "No", but in him it has always been "Yes". For no matter how many promises God has made, they are "Yes" in Christ.' (1 Cor 1:19-20).





Riverside Youth Club

Consistency was the word for Riverside in 2020-21.....

Throughout the year, working in partnership with Mentoring Plus, we have been able to provide a weekly session for young people. This has been in person, on Zoom and, in lockdown 3, the Thursday night meeting place was the land of *Minecraft*. All the young people were already playing the game and we decided a break from Zoom was needed. It was such good fun, and the game provided opportunities for creativity to shine through. There was still opportunity to chat through the difficulties of home-schooling and other challenges, such as isolation and minimal real life social interaction.

Coming into spring we did start to meet again in person on a one-to-one basis, and then the club was able to re-open, providing an opportunity to enjoy some cooking and football again. Provision of some specific funding allowed us to spend the last session of the year on the river with Bath Canoe Club. It was great to see the young people smiling and laughing and being themselves.

Southdown

Breakfast Club

Once Covid restrictions were lifted, we were able to re start Breakfast Club and immediately saw all the familiar faces coming back for hot chocolate and toast. It was really encouraging to have parents pop in to chat and tell us how much they had missed us and how appreciative they are of the project.

Motus Dance Academy

In September 2020 we appointed an Assistant Dance Coordinator – Freja George – to help Sam teach and develop the academy. Freja was a member of Motus in her teens and has enjoyed giving back to a project that supported her in the past.

Online teaching continued until the lifting of restrictions allowed the dancers to return to classes. Numbers were lower, partly explained by some young people changing schools and others starting college. The core group continued to meet and learnt dances faster than Sam & Freja could choreograph! There was a recognisable renewed energy amongst the dancers. The smaller group enabled us to work more closely with the students to build confidence and help them work on their own choreography.

Numbers did slowly increase, and we are very excited to start thinking about performances and dance shows again as well as developing our own space at the Roundhill Centre.

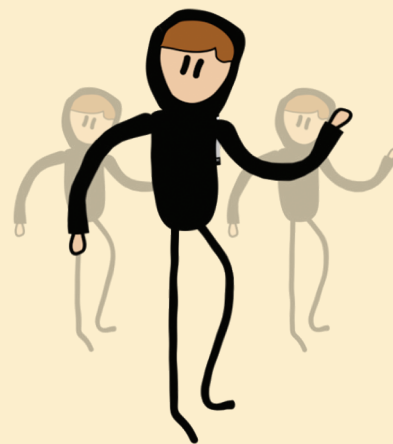
Adult Street Dance

A new initiative, this class quickly filled up but unfortunately had to stop a few weeks after they started due to the pandemic. The online tutorials Sam made were popular and people are keen to come back and dance together again.

Future developments

With the development of Roundhill hub, we will start to offer more classes, including a new 'Mini' Motus for school years 5 & 6. In addition, we will be launching lunch time dance clubs in 2 local primary schools. As requested by parents from Breakfast Club, a new lunch time adult class will start in the Autumn of 2021.

After what has felt like a very slow and frustrating year, Sam believes God is saying 'LETS GO!' With restrictions no longer having such a physical impact on dance spaces and class sizes, it will be possible to move forward building and deepening connection & community in Southdown.





Roundhill Hub



Roundhill Development Project

Since moving to the Roundhill Centre in February 2020 we have explored ways to progress our vision of developing a community hub. We have endeavoured to involve potential stakeholders in this process, including the local councillor (Paul Crossley), those who may want to use the building which include BANES council, Mentoring Plus, Oasis and the Police. We have commissioned a group of university students to conduct a community survey to determine a 'wish list' for the centre and look forward to using the results to further shape the project.

At the heart of our vision, the **Roundhill Hub** will be a place to facilitate the building of hope in young people's lives. We see it as providing opportunities to develop relationships with not only young people, but also the wider community. The Roundhill Hub will be a Christian space that is open to all throughout the week, serving the people on our doorstep as well as those in other parts of the city. We want to be part of the solution to see the most deprived community in Bath thrive.

During the year, a business plan was put together to start to shape the project. Appointing an architect – James Grayley – was a significant step forward and we worked with him to consider

options for a new environmentally friendly welcoming facility which will provide a café and space to run our projects, those of other community organisations, as well as providing a venue for clubs and events.

As a step towards better use of the building whilst we apply for funding, we provided a space for Oasis Church Bath to run a food pantry twice a week. Not only did this meet a need in the community but helped raise the profile of Bath Youth for Christ in the area. This project will continue into the next academic year, and we hope to expand this collaborative approach.

The project costs are estimated at £1.8 million and we have started to look at sources of funding. Although a large sum, we are confident that God can provide and believe that He has a plan for something new in Southdown and Whiteway. We will be applying for grants and considering campaigns to secure funding in the next academic year.

For I know the plans I have for you," declares the Lord, "Plans to prosper you and not to harm you, plans to give you hope and a future.
Jeremiah 29:11

The Hive

Although unable to connect with the young people in the village of Peasedown St John who would benefit and thrive from having the youth club up and running, we continued to pray for them and plan for the time when they could be welcomed into the building.



From January 2021 Meg Tucker, our Intern, made and released short weekly videos for the older children and younger teenagers in the village. These included a themed craft activity to engage them, using basic materials that were hopefully readily available. The focus was on the Fruits of the Spirit, looking at them from various angles, suggesting an activity and a way for the young people to engage with God during the time they were doing that activity. There was also an opportunity for a 'challenge' including participating in Lent to help self-control and starting a

prayer journal. The videos were posted on the 'Hive Youth' YouTube page at 7:30am on Sundays!

In May we sadly said goodbye to Chris Scolah and commenced the process of recruiting a new Senior Youth Worker. Nick Blythe was appointed to the position to commence in September.

During the summer term, Meg, several volunteers, and other Bath Youth for Christ team members delivered detached youth work to begin building relationships with young people. It is our goal to reach young people and show them that they are valued and loved by the creator of all things, as well as supporting those who may need a little extra encouragement after the past challenging 18 months.

By August, after a difficult year in Covid, The Hive's youth work was considerably closer to being up and running than the same time in 2020. The building was thriving as a community centre, with craft, sports and wellbeing groups running, as well as an in-house café, post office, and community library. The team are expectant that God will do many good things through the Hive's work with young people. There are plans to get involved with local schools as well as local churches to build a good network and share the gospel with as many young people as possible.



Chaplaincy & Church Youth Work

During the year Eden Hunter combined the role of Multi-Faith Chaplain at Bath College, Youth Minister at St Luke's Church, and Youth Worker.

Bath College Chaplain

This role required involvement in many aspects of the life of the college focussing on Welfare and Participation.

Eden provided pastoral care and support to students and staff covering a broad range of issues such as academic struggles, mental health, faith, and questions around life and death.

To encourage student participation, he worked closely with the students' union and other departments to deliver a fulfilling and enriching student experience. His physical presence in areas frequented by students allowed him to build a positive rapport with individuals.

Eden regularly planned and delivered college-wide events and campaigns at both the Bath and Radstock campus, usually revolving around faith-based celebrations and observances (such as Remembrance Day and Holocaust Memorial Day). He sent out weekly content (usually in written or video form) to staff and students focussing on wellbeing, encouragement, world events, and local college news. During the year he started and facilitated an active Christian Union with the aim of helping students to explore faith in a healthy way.

St Luke's Church Youth Minister

With responsibility of building and overseeing youth provision at St Luke's, Eden worked primarily with 10-18-year-olds.

One of the primary aspects of this role was to organise, plan, and deliver in-person sessions and events to engage with the youth both in the Church and in the surrounding area.

He ran a Sunday morning devotional meeting that focused on helping the youth explore faith in a fun and open way. This included creating lesson plans and learning materials. Eden also ran an after-school club and evening social, both of which focussed on being a safe space to build connections and have fun.



Throughout the lockdowns, when meeting in person was not possible, Eden produced weekly videos of both a fun and informative nature, shared with the youth at St Luke's as well as with other churches in Bath.

<https://youtube.com/channel/UC4jXWBytOoEVjqgNuFBxpRw>



City Wide Youth Work

During the year Eden continued to establish connections with and offer support to churches and schools in Bath, as well as mentoring year 7 boys, and carrying out detached youth work. He also worked on creative projects including graphic design and video editing.

A significant achievement was establishing and being a leading member of A2: an inter-church group of youth ministries working together to encourage both youth and youth workers in the City. As part of a team, Eden facilitated monthly youth worker connect meetings, organised and delivered inter-church youth gatherings, and created a podcast for youth in Bath called Walking in the Way, to be released weekly in September 2021. https://youtube.com/playlist?list=PLxAoR4DuX-m-cutCeFBiP2_nKqgsfcSsf

Eden completed a research project looking at how youth in Bath and Northeast Somerset have been affected by the Covid-19 restrictions, focussing on social, relational, mental, and physical wellbeing. The aim of this project is to help inform our future approach to youth and schools' support.



Photo by Edwin Johansson on Unsplash

Wiltshire

During the year 2020-21 Wiltshire Youth for Christ officially separated from Bath Youth for Christ, registering as a separate charity in October 2020 and completing the transition in April 2021.

A committed board of Wiltshire Trustees was established helping to ensure that the ministry and work has a strong foundation for years to come. Steve Dewar and Dan Webb continued in their roles as youth workers overcoming the many challenges faced by so many during the year. Opportunities to engage, inspire and equip young people, church and communities increased and the team remained committed to the vision and mission of Youth for Christ – *To see lives transformed by Jesus*.

Despite the restrictions due to the pandemic, as well as resource and financial limitations, Wiltshire Youth for Christ was able to support young people in several ways:

- Steve led 360 face-to-face Mentoring sessions in the 2020/21 Academic year in Lavington and Devizes Schools.
- Dan was able to lead and support a volunteer team delivering Mentoring sessions in Trowbridge, Bradford on Avon, and Warminster.
- Between January and August Steve led 30 Children's and 28 Youth sessions (online and then face to face) in St James Church, Devizes. Dan led a youth group at The West Wiltshire Vineyard Church.
- The Pop-Up Youth Work Van was out for 70 hrs over the summer break delivering outreach engagement as a unique resource in towns and rural villages.
- In conjunction with Wiltshire Police and other organisations Steve carried out targeted detached work to address some anti-social behaviour.
- The Role Model Project distributed over 100 Models to teenagers and families across the area to help promote positive and active Mental health during lock downs and school disruptions.
- Steve and Dan continued to support Primary schools where possible through lessons and the Accompanying Project.
- Partnering with the BBC *Kit out the Nation* appeal to collect and distribute sports equipment to young people and families facing financial hardship and limited resources.

As a new charity, the Wiltshire team have continued to address and respond to the challenges caused by the COVID-19 pandemic. Ongoing financial sustainability and support is crucial as the Trustees and staff team look at ways to develop and deepen the youth ministry taking place across parts of the county. The partnership and unity with Bath Youth for Christ for 10 years was significant and will help the new charity bear fruit in the long run. Though separated by geography, we are still united in the great commission to take the Gospel relevantly to young people.

The People

This Annual report covers the period from September 2020 to August 2021. The report contains contributions from Bath Youth for Christ staff and trustees.

The focus of this report is on the time period highlighted above. However, it will also give some indication as to the direction of Bath Youth for Christ going forward from September 2021.

Staff Team (2020-21)

Director of Bath and Wiltshire Youth for Christ

Dave Joyce

Senior Youth & Community Worker - Southdown

Sam Ludwell

Lead Schools & Missions Coordinator

Katie Little

East Bath Youth and Schools Worker

Sam Packer

Senior Youth Worker - Peasedown St John

Chris Scoriah (to May 2021)

Youth and Schools Worker - Timsbury

Jane van Haaps

Youth & Schools Worker and Bath College Chaplain

Eden Hunter

Sessional Outreach Worker

Amy Austin

Assistant Motus Dance Coordinator

Freja George

Youth Work Intern

Meg Tucker

Office & Operations Coordinator

Lisa Hawkins

Fundraiser

Leanne Lawton

Wiltshire Youth for Christ

Senior Youth Worker (Potterne)

Steve Dewar (to April 2021)

Senior Youth Worker (Trowbridge)

Dan Webb (to April 2021)

Volunteer Team 2020-21

We have lots of great volunteers supporting our projects. We can't name you all but a big 'Thank You' if you support our work in Bath or Wiltshire

Board of Trustees (2020-21)

Chair

John Lawton

Treasurer

David Chambers

Trustees

Louise Cripps

Jerry Parr

Jennifer Clarke (to January 2021)

Rebecca Genders (to April 2021)

Cath Knight (from Nov 2020)

Harley Wykes

David Plumbridge

Council of Reference

Chair

Rob Trickey

Wes Poirot

Graham Turner

Kathy Beadle

Graphic Design

Scott Joyce

IT support

Netitude (to July 2021)

Priority IT (from July 2021)

Fundraising

As for all charities, fundraising this past year has been particularly challenging. We really missed the Bath Half but are looking forward to it's return in March 2022. Needing to think creatively, we set up the Bath 2 Bethlehem Challenge in December 2020. We challenged our amazing supporters, trustees, and staff to get out and about to collectively travel 3,164 miles, the distance between our office in Southdown and the centre of Bethlehem. This event was a real success, raising more than £3,000. So, a huge thank you to everyone who walked (or cycled on their exercise bike!).

We really appreciate the continued support from funders, listed below with the projects they funded. Our relationships with young people showed us the negative impact Covid and lockdowns were having on their mental health. The funding we received helped us adapt our projects so that we were able to continue to offer support either virtually or through face-to-face delivery. We were not only able to maintain the delivery of our projects but managed to increase support of and work with young people for the first time through new projects such as detached youth work and the building of a new shelter in partnership with Bath City Farm.

As always it was the continued support of donors and churches that underpinned our work. We thank God that this remained stable through such difficult times and appreciate the faithful giving and prayers of our supporters.

Grants received in 2020/21

All Churches Trust Organisational Development

All Churches Trust: Hope Beyond Southdown: Bath City Farm Youth Shelter (in partnership with Bath City Farm)

Alfred Haines Trust Organisational Development

Dame Violet Wills Charitable Trust Schools Work: Accompanying & Organisational Development

Jug of Oil Trust Southdown: Detached Youth Work

Quartet Community Foundation: Resilience Fund Organisational Development

Quartet Community Foundation: Bath Half Fund Southdown: Motus

Quartet Community Foundation: Express Grant Schools Work

Quartet Community Foundation: Somerset Crimebeat Fund Timsbury

St James' Place Schools Work: Mentoring

St Johns Foundation Timsbury & Southdown

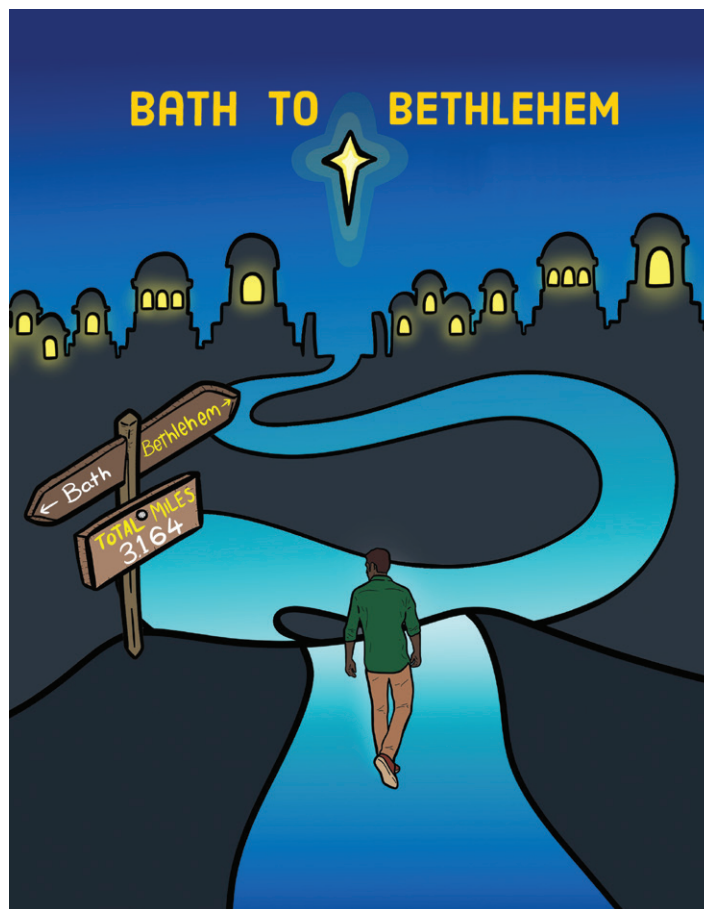
The National Lottery: Awards for All Southdown

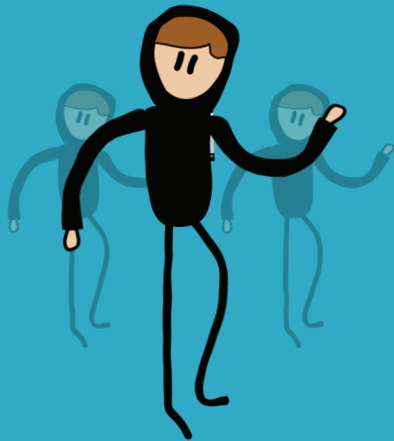
Donations received in 2020/21

Bath Abbey Organisational Development

St Mary's Church Timsbury

Timsbury Parish Council Timsbury





Chair of Trustees' Report

It was great to see the staff rise to the challenges that the Covid pandemic presented during the year. Whether through online mentoring, when face-to-face was not possible; meeting young people through Minecraft; outdoor youth clubs; online dance classes or working from home, we were able to continue to support young people through this extremely difficult time. This was possible due to the stability provided by the ongoing financial support and prayers of many individuals and organisations, for which we are extremely grateful.

As we head into an exciting time seeking to serve more young people across BANES I am reminded of Micah 6:8 *"The Lord has shown you what is good. He has told you what he requires of you. You must act with justice. You must love to show mercy. And you must be humble as you live in the sight of your God."*

Through our new mission statement and values of building community, inspiring hope, and encouraging belonging, my hope is that we aspire to demonstrate Micah 6:8 in all that we do.

Thank you again for your support over the past year. We are really looking forward to what God has in store for 2022!

God Bless
John Lawton

Treasurer's Report

The accounts for Bath Youth for Christ CIO (Charitable Incorporated Organisation) include Wiltshire Youth for Christ for the year ending 31st August 2021.

We recorded a deficit over the year despite continuing to benefit from the government furlough scheme until March, after which all staff resumed their normal hours. Headline figures show income slightly decreased from £275K to £241K, with expenditure slightly up from £254K to £257K. Income from our regular supporters has been supplemented by several successful grant applications, mainly thanks to our fundraising expert Leanne Lawton. A further £27K has been received and set aside for our Roundhill Centre building project and is shown as deferred income on our balance sheet. Overall, this increased our reserves from £150K to £162K, of which £104K is restricted and also includes the £27K deferred income.

Wiltshire Youth for Christ formally split off and employees were transferred from 6 April 2021. Some residual income from regular donors continues to be passed on, and we are encouraging all WYFC donors to switch their standing orders to the WYFC new account. This will reduce both income and expenditure for Bath YFC accounts by around 25 per cent next year.

Many of our projects operate on a break-even basis, funded from grants and local contributions. Most of our unrestricted funds are used towards work in schools and related activities. Our budget for next year will increase our focus on the development of the Roundhill centre building in Southdown, primarily funded by grants.

The organisation continues to run a lean and thrifty administration supplemented by the addition of a fundraiser (specifically funded by a grant). We have migrated mass communications to digital/online formats, which reduce expenditure on printed material and postage. The majority of contributions received is used to fund front-line activities and direct oversight.

Individual regular voluntary giving remains a critical element of our income, and I am pleased to report a small increase from £36K to £38K, although donations from local churches were reduced. Together, these provide an important platform and justification when applying for grants and other sources of income. Grant income has formed a large proportion of our income in recent years but can be highly variable and tends to focus on the start-up phase/early years of new projects, rather than providing ongoing sustainable support.

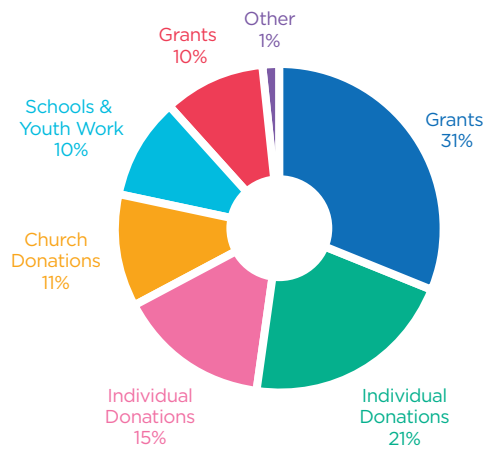
Spending within different projects has been reduced in some cases due to furlough, but we have retained all our staff on full pay throughout.

I'd like to thank all those who contributed towards the success of BYFC over the past year, donating financially and/or by giving their time and expertise.

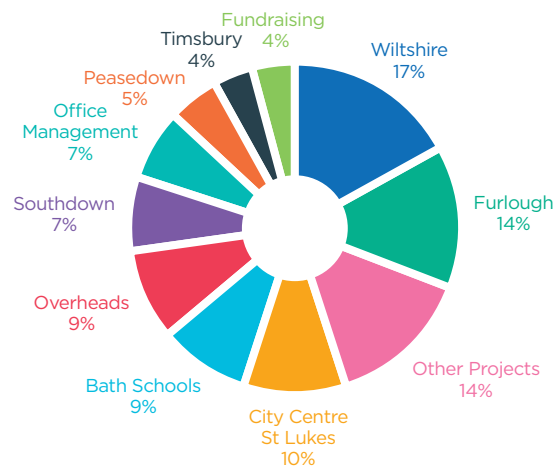
David Chambers
Hon Treasurer

Where the Money Went in 2021/21

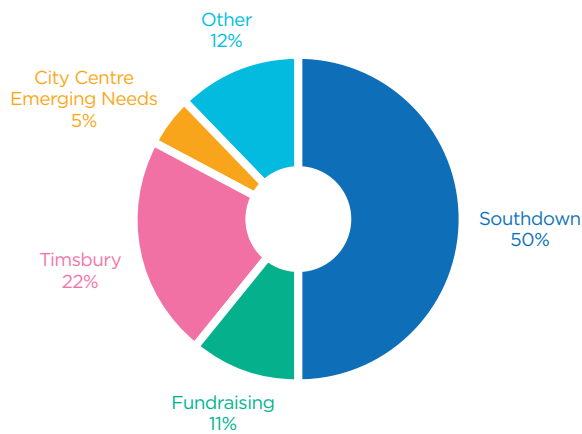
Income



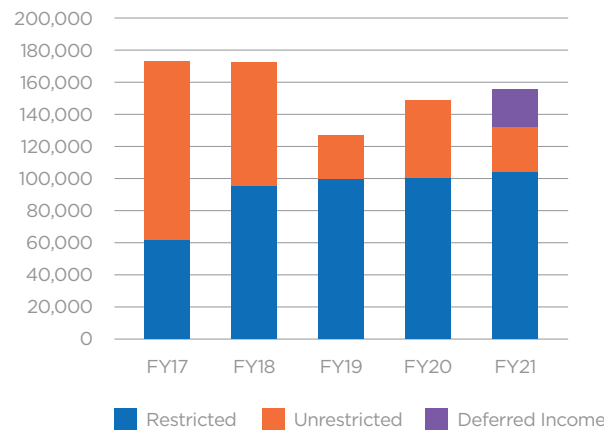
Expenditure



Restricted Fund Balance 31 Aug 2021



End of Year Balances 31 Aug 2021



Statement of Financial Activities

For the year ending 31 August 2021

	Unrestricted Funds £	Restricted Funds £	TOTAL 2021 £	TOTAL 2020 £
Incoming Resources				
Voluntary Income	45,772	54,050	99,821	108,945
Activities for generating funds	3,101	-	3,101	2,876
Income from Investment	307	-	307	503
Incoming resources from charitable activities	10,720	90,143	100,863	162,782
Other incoming resources	37,136	-	37,136	-
Total Incoming Resources	97,037	144,193	241,230	275,106
Resources Expended				
Generation of voluntary income	3,770	6,675	10,445	9,149
Fundraising costs	-	-	-	-
Investment Management Costs	-	-	-	-
Charitable Activities	106,965	136,197	243,162	241,442
Governance Costs	-	-	-	-
Other resources expended	3,808	-	3,808	3,681
Total Resources Expended	114,544	142,872	257,416	254,273
Net incoming/(Outgoing) Resources	(17,507)	1,321	(16,186)	20,833
Gains and (Losses) On Investments	-	-	-	-
Retained as deferred income	-	27,858	27,858	-
Net Movement in Funds	(17,507)	29,179	11,672	20,833
Balances brought forward at start of year	50,915	99,360	150,275	129,442
Balances carried forward at end of year	33,408	128,539	161,947	150,275

Balance Sheet at Year End

For the year ending 31 August 2021

	2021 £	2020 £
Fixed Assets		
Tangible Fixed Assets	0	0
Investment Assets	0	0
	0	0
Current Assets		
Debtors	3,262	9,614
Cash in bank and in hand	164,562	145,392
	167,824	155,006
Liabilities (Due within one year)	5,877	4,732
Net Current Assets	161,947	150,275
Net Assets	161,947	150,275
Represented by Funds		
Unrestricted	30,496	50,116
Restricted	103,593	100,159
Deferred Income	27,858	
Total	161,947	150,275

Financial Summary 2020/21

This summarised financial information was extracted from the draft Annual Accounts for the period 1 September 2020 to 31 August 2021.

Financial Activities

These figures may not contain enough information to allow for a full understanding of the financial affairs of the charity and the accounting policies adopted in their preparation. The full accounts comply with the Statement of Recommended Practice (SORP) Accounting and Reporting by Charities (FRS 102) 2015. For further information, the full annual accounts, independent examiner's report, and the trustees' annual report should be consulted.

These accounts are not the statutory accounts but a summary of information relating to both the Statement of Financial Activities and the more detailed balance sheet. The annual accounts are being independently examined by a firm of professional accountants, and their report can be obtained in due course from the Bath Youth for Christ Office, Roundhill Centre, Mount Street, Bath, BA2 1LG.



John Lawton

**ANNUAL REPORTS AND FINANCIAL STATEMENTS
FOR THE YEAR ENDED 31ST AUGUST 2021**

BATH YOUTH FOR CHRIST

(Charitable Incorporated Organisation)

CHARITY REGISTRATION No: 1165745

Castle View Accounting Ltd
Old Printing House Square
Unit 16, Tarrant Street
Arundel
West Sussex
BN18 9JF

BATH YOUTH FOR CHRIST
(Charitable Incorporated Organisation)

CONTENTS

Page 3	Legal and Administrative Information
Pages 4 to 5	Trustees' Report
Page 6	Statement of Financial Activities
Page 7	Balance Sheet
Pages 8 to 14	Notes to the Financial Statements
Page 15	Independent Examiner's Report

BATH YOUTH FOR CHRIST
(Charitable Incorporated Organisation)

LEGAL AND ADMINISTRATIVE INFORMATION

CHARITY NUMBER	1165745
WORKING NAMES	Bath YFC
DATE OF REGISTRATION	25th February 2016
START OF FINANCIAL PERIOD	1st September 2020
END OF FINANCIAL PERIOD	31st August 2021
TRUSTEES AT 31ST AUGUST 2021	Jerry Parr John Lawton David Plumbridge David Chambers Harley Wykes Louise Cripps Catherine Knight
LEGAL STATUS	Charitable Incorporated Organisation
GOVERNING INSTRUMENT	CIO - Foundation Registered 25th February 2016

OBJECTS

1. To advance the Christian Faith and to proclaim the Gospel of the Lord Jesus Christ throughout the World and in particular (but without limitation) in Bath and Wiltshire; 2. To promote and encourage Christian Evangelism of young people throughout the World and in particular (but without limitation) in Bath and Wiltshire; 3. To educate, encourage and participate in the emotional, physical and spiritual development of young people throughout the World and in particular (but without limitation) in Bath and Wiltshire; 4. To relieve poverty among young homeless people by the provision of housing, education and training and such other ways in which the Charity Trustees may from time to time to decide; 5. The advancement of education in (but not limited to) Bath and Wiltshire.

CORRESPONDENCE ADDRESS	YMCA Roundhill Centre Mount Road Bath BA2 1LG
PRIMARY BANKERS	Barclays Bank Plc 1 Churchill Place London E14 5HP
INDEPENDENT EXAMINERS	Castle View Accounting Ltd Old Printing House Square Unit 16, Tarrant Street Arundel West Sussex BN18 9JF

BATH YOUTH FOR CHRIST
(Charitable Incorporated Organisation)

TRUSTEES' REPORT
FOR THE YEAR ENDED 31ST AUGUST 2021

The accounts for Bath Youth for Christ CIO (Charitable Incorporated Organisation) include Wiltshire Youth for Christ for the year ending 31st August 2021.

We recorded a deficit over the year despite continuing to benefit from the government furlough scheme until March, after which all staff resumed their normal hours. Headline figures show income slightly decreased from £275K to £241K, with expenditure slightly up from £254K to £258K. Income from our regular supporters has been supplemented by several successful grant applications, mainly thanks to our fundraising expert Leanne Lawton. A further £27K has been received and set aside for our Roundhill Centre building project and is shown as deferred income on our balance sheet. Overall, this increased our reserves from £150K to £162K, of which £104K is restricted and also includes the £27K deferred income.

Wiltshire Youth for Christ formally split off and employees were transferred from 6 April 2021. Some residual income from regular donors continues to be passed on, and we are encouraging all WYFC donors to switch their standing orders to the WYFC new account. This will reduce both income and expenditure for Bath YFC accounts by around 25 per cent next year.

Many of our projects operate on a break-even basis, funded from grants and local contributions. Most of our unrestricted funds are used towards work in schools and related activities. Our budget for next year will increase our focus on the development of the Roundhill centre building in Southdown, primarily funded by grants.

The organisation continues to run a lean and thrifty administration supplemented by the addition of a fundraiser (specifically funded by a grant). We have migrated mass communications to digital/online formats, which reduce expenditure on printed material and postage. The majority of contributions received is used to fund front-line activities and direct oversight.

Individual regular voluntary giving remains a critical element of our income, and I am pleased to report a small increase from £36K to £38K, although donations from local churches were reduced. Together, these provide an important platform and justification when applying for grants and other sources of income. Grant income has formed a large proportion of our income in recent years but can be highly variable and tends to focus on the start-up phase/early years of new projects, rather than providing ongoing sustainable support.

Spending within different projects has been reduced in some cases due to furlough, but we have retained all our staff on full pay throughout.

I'd like to thank all those who contributed towards the success of BYFC over the past year, donating financially and/or by giving their time and expertise.

David Chambers (Hon Treasurer)

Financial Summary 2020/21

This summarised financial information was extracted from the draft Annual Accounts for the period 1st September 2020 to 31st August 2021.

Financial Activities

These figures may not contain enough information to allow for a full understanding of the financial affairs of the charity and the accounting policies adopted in their preparation. The full accounts comply with the Statement of Recommended Practice (SORP) Accounting and Reporting by Charities (FRS 102) 2015. For further information, the full annual accounts, independent examiner's report and the trustees' annual report should be consulted.

These accounts are not the statutory accounts but a summary of information relating to both the Statement of Financial Activities and the more detailed balance sheet. The annual accounts are being independently examined by a firm of professional accountants, and their report can be obtained in due course from the Bath Youth for Christ Office, Roundhill Centre, Mount Street, Bath, BA2 1LG.

BATH YOUTH FOR CHRIST
(Charitable Incorporated Organisation)

TRUSTEES' REPORT (Continued)
FOR THE YEAR ENDED 31ST AUGUST 2021

Trustees' Responsibilities

The Charities Act 2011 requires the trustees to prepare financial statements for each financial year which give a true and fair view of the state of affairs of the CIO and of the surplus of the CIO for that period. In preparing those financial statements the trustees are required to:

- Select suitable accounting policies and apply them consistently
- Make judgements and estimates that are reasonable and prudent
- Prepare financial statements on the going concern basis unless it is inappropriate to presume that the trust will continue in existence.

The trustees are responsible for keeping proper accounting records, which disclose with reasonable accuracy at any time the financial position of the CIO. They are also responsible for safeguarding the assets of the CIO and hence for taking reasonable steps for the prevention and detection of fraud and other irregularities.

Approved by the Trustees on **20 December 2021**

Signed on their behalf by Trustee 

Printed Name: **DAVID CHAMBERS**

BATH YOUTH FOR CHRIST
(Charitable Incorporated Organisation)

**STATEMENT OF FINANCIAL ACTIVITIES
FOR THE YEAR ENDED 31ST AUGUST 2021**

	Notes	Unrestricted Funds £	Restricted Funds £	TOTAL 2020/21 £	TOTAL 2019/20 £
INCOMING RESOURCES					
Incoming Resources from Generated Funds					
Donations, Grants & Legacies	3a	88,575	60,403	148,978	207,072
Charitable Activities	3b	6,230	45,412	51,642	63,458
Activities for Generating Funds	3c	3,101	-	3,101	2,876
Investment Income	3d	307	-	307	503
Other Incoming Resources	3e	6,648	30,554	37,202	1,198
TOTAL INCOMING RESOURCES		104,861	136,369	241,230	275,106
RESOURCES EXPENDED					
Costs of Generating Funds					
Cost of Charitable Activities	4a	119,116	124,047	243,163	241,442
Cost of Generating Funds	4b	7,578	6,675	14,253	12,830
Governance Costs	4c	800	-	800	-
TOTAL RESOURCES EXPENDED		127,494	130,722	258,216	254,273
NET INCOMING (OUTGOING) RESOURCES		(22,633)	5,647	(16,986)	20,833
Funds Brought Forward		50,116	100,159	150,275	129,442
TOTAL FUNDS CARRIED FORWARD		27,483	105,806	133,289	150,275

Movements on all reserves and all recognised gains and losses are shown above. All of the organisation's operations are classed as continuing.

The notes on pages 8 to 14 form part of these financial statements.

BATH YOUTH FOR CHRIST
(Charitable Incorporated Organisation)

BALANCE SHEET
AS AT 31ST AUGUST 2021

	Note	Unrestricted Funds £	Restricted Funds £	Total 31-Aug-21 £	Total 31-Aug-20 £
Fixed Assets					
Tangible Assets	2	-	-	-	-
Investments	6	-	-	-	-
Total Fixed Assets		-	-	-	-
Current Assets					
Debtors & Prepayments	8	3,262	-	3,262	9,614
Cash at Bank and in Hand	7	30,418	134,144	164,562	145,393
Total Current Assets		33,680	134,144	167,824	155,007
Creditors: Amounts falling due within one year	9	6,197	28,338	34,535	4,732
NET CURRENT ASSETS		27,483	105,806	133,289	150,275
TOTAL ASSETS less current liabilities		27,483	105,806	133,289	150,275
Creditors: Amounts falling due in more than one year	10	-	-	-	-
NET ASSETS		27,483	105,806	133,289	150,275
Funds of the Charity					
General Funds		27,483	-	27,483	50,116
Restricted Funds	5	-	105,806	105,806	100,159
Total Funds		27,483	105,806	133,289	150,275

Approved by the Trustees on 20 December 2021

Signed on their behalf by Trustee 

Printed Name: DAVID CHAMBERS

BATH YOUTH FOR CHRIST
(Charitable Incorporated Organisation)

**NOTES TO THE FINANCIAL STATEMENTS
FOR THE YEAR ENDED 31ST AUGUST 2021**

1. ACCOUNTING POLICIES

Basis of Preparation & Assessment of Going Concern

Basis of Preparation

The financial statements have been prepared under the historical cost convention with items recognised at cost or transaction value unless otherwise stated in the relevant notes. The financial statements have been prepared in accordance with the Statement of Recommended Practice: Accounting and Reporting by Charities preparing their accounts in accordance with the Financial Reporting Standard applicable in the UK and Republic of Ireland (FRS102) (effective 1 January 2015) - (Charities SORP - FRS102) and the Charities Act 2011.

The Charity meets the definition of a public benefit entity under FRS102. Assets and liabilities are initially recognised at historical cost unless otherwise stated in the relevant accounting policy notes.

Assessment of Going Concern

Preparation of the accounts is on a going concern basis. The trustees consider that there are no material uncertainties about the Charity's ability to continue as a going concern.

Incoming Resources

Recognition of Incoming Resources

These are included in the Statement of Financial Activities (SOFA) when:

- the charity becomes entitled to the resources;
- the trustees are virtually certain they will receive the resources; and
- the monetary value can be measured with sufficient reliability

Incoming Resources with Related Expenditure

Where incoming resources have related expenditure (as with fundraising or contract income) the incoming resource and related expenditure are reported gross in the SOFA.

Grants and Donations

Grants and Donations are only included in the SOFA when the charity has unconditional entitlement to the resources.

Tax Reclaims on Donations and Gifts

Incoming resources from tax reclaims are included in the SOFA at the same time as the gift to which they relate.

Contractual Income and Performance Related Grants

This is only included in the SOFA once the related goods or services have been delivered.

Gifts in Kind

Gifts in kind are accounted for at a reasonable estimate of their value to the charity or the amount actually realised. Gifts in kind for sale or distribution are included in the accounts as gifts only when sold or distributed by the charity. Gifts in kind for use by the charity are included in the SOFA as incoming resources when receivable.

Donated Services and Facilities

These are only included in incoming resources (with an equivalent amount in resources expended) where the benefit to the charity is reasonably quantifiable, measurable and material. The value placed on these resources is the estimated value to the charity of the service or facility received.

Volunteer Help

The value of any voluntary help received is not included in the accounts.

Investment Income

This is included in the accounts when receivable.

Investment Gains and Losses

This included any gain or loss on the sale of investments and any gain or loss resulting from revaluing investments to market value at the end of the year.

BATH YOUTH FOR CHRIST
(Charitable Incorporated Organisation)

NOTES TO THE FINANCIAL STATEMENTS (continued)
FOR THE YEAR ENDED 31ST AUGUST 2021

1. ACCOUNTING POLICIES (continued)

Expenditure and Liabilities

Liability Recognition

Liabilities are recognised as soon as there is a legal or constructive obligation committing the charity to pay out resources.

Governance Costs

Include costs of the preparation and examination of statutory accounts, the costs of the trustees meetings and cost of any legal advice to trustees on governance or constitutional matters.

Grants with Performance Conditions

Where the charity gives a grant with conditions for its payment being a specific level of service or output to be provided, such grants are only recognised in the SOFA once the recipient of the grant has provided the specified service or output.

Grants Payable without Performance Conditions

These are only recognised in the accounts when a commitment has been made and there are no conditions to be met relating to a grant which remain in control of the charity.

Investments

Investments quoted on a recognised stock exchange are valued at market value at the year end. Other investment assets are included at trustees' best estimate of market value.

Unrestricted funds

These funds can be used for the general objectives of the charity as set out in the trustees report. The movements of the unrestricted funds are given in the Statement of Financial Activities.

Restricted funds

These funds are where the donor has specified a purpose for the donation made. These restrictions often arise as a result of appeals for special offerings for specific purposes.

Designated funds

These funds are funds set aside by the trustees out of unrestricted general funds for particular purposes or projects.

Fixed Assets

Fixed Assets are capitalised if they can be used for more than one year and cost at least £1,500. They are valued at cost or, if gifted, at the value to the charity on receipt.

Depreciation Expense

Depreciation is calculated at a rate to write off the cost of tangible fixed assets over their estimated useful lives. The rates applied are as follows:

Fixtures, Fittings and Equipment	25% - Straight Line Basis
----------------------------------	---------------------------

2. TANGIBLE FIXED ASSETS

The CIO held no fixed assets during this or the previous financial year.

The annual commitments under non-cancelling operating leases and capital commitments are as follows:

31st August 2021 : None

31st August 2020 : None

BATH YOUTH FOR CHRIST
(Charitable Incorporated Organisation)

NOTES TO THE FINANCIAL STATEMENTS (continued)
FOR THE YEAR ENDED 31ST AUGUST 2021

3. INCOMING RESOURCES

	Unrestricted Funds £	Restricted Funds £	TOTAL 2020/21 £	TOTAL 2019/20 £
a) Donations, Grants & Legacies				
Church Gifts	5,005	7,594	12,599	7,933
Church Regular	7,518	3,120	10,638	17,791
Gift Aid	-	7,167	7,167	7,776
Grants & Donations	47,291	28,600	75,891	133,523
Individual Gifts	2,125	1,895	4,020	3,503
Individual Regular	26,636	12,026	38,662	36,546
	88,575	60,403	148,978	207,072

b) Charitable Activities

Events	-	-	-	206
Schools & Youth Work	4,655	20,252	24,907	27,855
Youth Work	1,575	25,161	26,736	35,396
	6,230	45,412	51,642	63,458

c) Activities for Generating Fund

Sponsorship Activities	3,101	-	3,101	2,876
	3,101	-	3,101	2,876

d) Investment Income

Interest & Dividends	307	-	307	503
	307	-	307	503

e) Other Incoming Resources

Furlough Income	6,582	30,554	37,136	-
Sundry Income	66	-	66	1,198
	6,648	30,554	37,202	1,198

BATH YOUTH FOR CHRIST
(Charitable Incorporated Organisation)

NOTES TO THE FINANCIAL STATEMENTS (continued)
FOR THE YEAR ENDED 31ST AUGUST 2021

4. RESOURCES EXPENDED

	Unrestricted Funds £	Restricted Funds £	TOTAL 2020/21 £	TOTAL 2019/20 £
a) Cost of Charitable Activities				
Accompanying Project	1,579	1,288	2,867	8,074
Bath Connect Mentoring	8,063	-	8,063	8,153
Bath Schools	12,397	2,000	14,397	12,680
City Centre Emerging Needs	845	2,208	3,053	387
City Centre St Luke's	12,125	13,839	25,964	26,097
COVID-19	1,456	7,938	9,394	5,153
Equipment Costs	1,279	-	1,279	2,806
Event Costs	600	-	600	525
Furlough Costs	6,583	30,554	37,137	24,808
Insurance Costs	1,274	-	1,274	1,288
Missions	1,881	13	1,894	2,649
Office Co-ordinator/Management	18,599	-	18,599	21,190
Other Projects	15,314	3,230	18,544	11,963
Payroll Costs	2,083	-	2,083	941
Peasedown	11,673	-	11,673	12,196
Postage Costs	629	-	629	326
Printing, Stationery & Photocopier	125	-	125	589
Rent & Rates	1,100	-	1,100	5,350
Southdown Costs	4,044	15,000	19,044	18,813
Staff Welfare	1,007	-	1,007	569
Sundry Expenses	453	480	933	352
Telephone Costs	6,682	-	6,682	5,651
Timsbury	6,346	4,200	10,546	12,866
Training Costs	2,695	-	2,695	3,713
Travel & Subsistence	131	-	131	80
Wiltshire Costs	154	43,297	43,451	54,225
	119,116	124,047	243,163	241,442

b) Cost of Generating Funds

Advertising & Publicity	3,808	-	3,808	3,681
Fundraising Costs	3,770	6,675	10,445	9,149
	7,578	6,675	14,253	12,830

c) Governance Costs

Independent Examiners Fees	9	800	-	800	-
		800	-	800	-

BATH YOUTH FOR CHRIST
(Charitable Incorporated Organisation)

NOTES TO THE FINANCIAL STATEMENTS (continued)
FOR THE YEAR ENDED 31ST AUGUST 2021

5. RESTRICTED FUNDS

CURRENT FINANCIAL YEAR

	Balance 01-Sep-20	Income	Expenditure	Transfers	Balance 31-Aug-21
	£	£	£	£	£
Accompanying Fund	1,283	1,271	1,288	-	1,266
Bath Connect Mentoring	5	2,649	-	-	2,654
Bath Schools Fund	935	4,514	2,000	-	3,449
City Centre Emerging Needs	7,289	-	2,208	-	5,081
City Centre St Luke's	316	13,523	13,839	-	-
COVID-19 Fund	9,718	-	7,938	-	1,780
Mission Fund	13	-	13	-	-
Fundraising Fund	13,541	4,976	6,675	-	11,842
Furlough Fund	-	30,554	30,554	-	-
Odd Down Youth Club	23	-	23	-	-
Org Development	2,124	4,818	2,107	-	4,835
Other Youth Work	718	382	1,100	-	-
Southdown Fund	39,753	27,429	15,000	-	52,182
Timsbury Fund	10,269	16,648	4,200	-	22,717
Wiltshire (All funds)	14,172	29,605	43,777	-	-
	100,159	136,369	130,722	-	105,806

PREVIOUS FINANCIAL YEAR

	Balance 01-Sep-19	Income	Expenditure	Transfers	Balance 31-Aug-20
	£	£	£	£	£
Accompanying Fund	11,550	-	10,267	-	1,283
Bath Connect Mentoring	3,019	1,161	4,175	-	5
Bath Schools Fund	200	3,278	2,543	-	935
City Centre Emerging Needs	9,750	-	2,461	-	7,289
City Centre St Luke's	-	6,561	6,245	-	316
COVID-19 Fund	-	15,286	5,568	-	9,718
Mission Fund	-	2,133	2,120	-	13
Fundraising Fund	22,690	-	9,149	-	13,541
Furlough Fund	-	24,808	24,808	-	-
Odd Down Youth Club	1,800	3,748	5,525	-	23
Org Development	-	2,569	445	-	2,124
Other Youth Work	3,000	346	2,628	-	718
Southdown Fund	36,000	27,676	23,923	-	39,753
Timsbury Fund	4,663	21,967	16,361	-	10,269
Wiltshire Fund	6,701	76,425	68,954	-	14,172
	99,373	185,958	185,172	-	100,159

Restricted funds are wholly represented by the charity's cash reserves and are to be expended as specified above.

BATH YOUTH FOR CHRIST
(Charitable Incorporated Organisation)

NOTES TO THE FINANCIAL STATEMENTS (continued)
FOR THE YEAR ENDED 31ST AUGUST 2021

6. INVESTMENTS

The CIO held no fixed assets investments during this or the previous financial year.

7. CASH AT BANK AND IN HAND

	Unrestricted Fund £	Restricted Fund £	Total 31-Aug-21 £	Total 31-Aug-20 £
Cash at Bank & in Hand	30,418	134,144	164,562	145,393
	30,418	134,144	164,562	145,393

8. DEBTORS AND PREPAYMENTS

	Unrestricted Fund £	Restricted Fund £	Total 31-Aug-21 £	Total 31-Aug-20 £
Coronavirus Job Retention Scheme	-	-	-	5,625
Gift Aid Tax Recoverable	3,262	-	3,262	3,989
	3,262	-	3,262	9,614

9. CREDITORS: AMOUNTS FALLING DUE WITHIN ONE YEAR

	Unrestricted Fund £	Restricted Fund £	Total 31-Aug-21 £	Total 31-Aug-20 £
Deferred Income	-	27,858	27,858	-
Independent Examiners Fees	800	-	800	-
PAYE & N.I	1,373	-	1,373	3,249
Pension Contributions	888	-	888	1,483
Sundry Creditors	700	480	1,180	-
Wiltshire Youth for Christ	2,436	-	2,436	-
	6,197	28,338	34,535	4,732

10. CREDITORS: AMOUNTS FALLING DUE IN MORE THAN ONE YEAR

The CIO held no long term liabilities during this or the previous financial year.

BATH YOUTH FOR CHRIST
(Charitable Incorporated Organisation)

NOTES TO THE FINANCIAL STATEMENTS (continued)
FOR THE YEAR ENDED 31ST AUGUST 2021

11. STAFF COSTS AND NUMBERS

	TOTAL 2020/21 £	TOTAL 2019/20 £
Gross Wages, Salaries & Fees	182,692	193,745
Employer's National Insurance Costs	8,106	9,492
Pension Contributions	14,555	15,470
	<u>205,353</u>	<u>218,707</u>

Employees who were engaged in each of the following activities:

	TOTAL 2020/21	TOTAL 2019/20
Charitable Activities	8	9
Fundraising	0.5	0.5

Defined Contribution Pension Scheme

The charity pays into a defined contribution pension scheme, contributing 7% of employee gross salary.

The Charity operates a PAYE scheme to pay all members of employed staff and no employees received emoluments in excess of £60,000 (2019/20:None)

12. TRUSTEES AND OTHER RELATED PARTIES

During the financial year Mrs L. Lawton (Wife of Trustee Mr J. Lawton) received £9,885 in salary related payments and £827 in Pension Contribution in her capacity as Fundraising Coordinator for Bath Youth for Christ in furthering the Charity's objectives.

No other payments were made to trustees or any persons connected with them during this financial period. No other material transaction took place between the organisation and a trustee or any person connected with them.

13. RISK ASSESSMENT

The Trustees actively review the major risks which the charity faces on a regular basis and believe that maintaining the free reserves stated, combined with the annual review of the controls over key financial systems carried out on an annual basis will provide sufficient resources in the event of adverse conditions. The Trustees have also examined other operational and business risks which they face and confirm that they have established systems to mitigate the significant risks.

14. RESERVES POLICY

The Trustees have considered the level of reserves they wish to retain, appropriate to the CIO's needs. This is based on the CIO's size and the level of financial commitments held. The Trustees aim to ensure the CIO will be able to continue to fulfil its charitable objectives even if there is a temporary shortfall in income or unexpected expenditure. The Trustees will endeavour not to set aside funds unnecessarily.

15. PUBLIC BENEFIT

The CIO acknowledges its requirement to demonstrate clearly that it must have charitable purposes or 'aims' that are for the public benefit. Details of how the CIO has achieved this are provided in the Trustees report. The Trustees confirm that they have paid due regard to the Charity Commission guidance on public benefit before deciding what activities the CIO should undertake

BATH YOUTH FOR CHRIST
(Charitable Incorporated Organisation)

INDEPENDENT EXAMINER'S REPORT ON THE ACCOUNTS

Report to the trustees/ members of Bath Youth for Christ on the accounts for the year ended 31st August 2021 set out on pages 6 to 14.

Respective responsibilities of trustees and examiner

The charity's trustees are responsible for the preparation of the accounts. The charity's trustees consider that an audit is not required for this year under section 144 of the Charities Act 2011 (the Charities Act) and that an independent examination is needed.

It is my responsibility to:

- examine the accounts under section 145 of the Charities Act,
- follow the procedures laid down in the general Directions given by the Charity Commission (under section 145(5)(b) of the Charities Act, and
- state whether particular matters have come to my attention

Basis of independent examiner's statement

My examination was carried out in accordance with general Directions given by the Charity Commission. An examination includes a review of the accounting records kept by the charity and a comparison of the accounts presented with those records. It also includes consideration of any unusual items or disclosures in the accounts, and seeking explanations from the trustees concerning any such matters. The procedures undertaken do not provide all the evidence that would be required in an audit, and consequently no opinion is given as to whether the accounts present a 'true and fair' view and the report is limited to those matters set out in the statement below.

Independent examiner's statement

In connection with my examination, no matter has come to my attention:

1. which gives me reasonable cause to believe that in any material respect, the requirements:
 - to keep accounting records in accordance with section 130 of the Charities Act; and
 - to prepare accounts which accord with the accounting records and comply with the accounting requirements of the Charities Act

have not been met; or

2. to which, in my opinion, attention should be drawn in order to enable a proper understanding of the accounts to be reached.

K. Collaku MAAT
Castle View Accounting Ltd
Old Printing House Square
Unit 16, Tarrant Street
Arundel
West Sussex
BN18 9JF


Date: 28th December 2021

BATH YOUTH FOR CHRIST
(Charitable Incorporated Organisation)

INDEPENDENT EXAMINER'S REPORT ON THE ACCOUNTS

Report to the trustees/ members of Bath Youth for Christ on the accounts for the year ended 31st August 2021 set out on pages 6 to 14.

Respective responsibilities of trustees and examiner

The charity's trustees are responsible for the preparation of the accounts. The charity's trustees consider that an audit is not required for this year under section 144 of the Charities Act 2011 (the Charities Act) and that an independent examination is needed.

It is my responsibility to:

- examine the accounts under section 145 of the Charities Act,
- follow the procedures laid down in the general Directions given by the Charity Commission (under section 145(5)(b) of the Charities Act, and
- state whether particular matters have come to my attention

Basis of independent examiner's statement

My examination was carried out in accordance with general Directions given by the Charity Commission. An examination includes a review of the accounting records kept by the charity and a comparison of the accounts presented with those records. It also includes consideration of any unusual items or disclosures in the accounts, and seeking explanations from the trustees concerning any such matters. The procedures undertaken do not provide all the evidence that would be required in an audit, and consequently no opinion is given as to whether the accounts present a 'true and fair' view and the report is limited to those matters set out in the statement below.

Independent examiner's statement

In connection with my examination, no matter has come to my attention:

1. which gives me reasonable cause to believe that in any material respect, the requirements:
 - to keep accounting records in accordance with section 130 of the Charities Act; and
 - to prepare accounts which accord with the accounting records and comply with the accounting requirements of the Charities Act

have not been met; or

2. to which, in my opinion, attention should be drawn in order to enable a proper understanding of the accounts to be reached.

K. Collaku MAAT
Castle View Accounting Ltd
Old Printing House Square
Unit 16, Tarrant Street
Arundel
West Sussex
BN18 9JF

Date: 28th December 2021

