

# Trowbridge Future

Registered Charity Number: 1165254

## ANNUAL REPORT 2023/24



Inclusive ☐ Impartial ☐ Engaging ☐ Kind



## LETTER FROM THE CEO

**MEG AUBREY**

Over the past year Trowbridge Future has continued to be a vital and valued organisation within Trowbridge and surrounding areas, that people feel comfortable to engage with and be part of. I am proud of the on-going hard work and commitment of all our staff, trustees and volunteers who have helped create safe, accessible spaces where people are able to build relationships with trusted adults to meet their variety of needs and gain support to move forward on positive journeys of change. We have built an amazing team who bring so much energy, support and kindness to their roles and makes Trowbridge Future what it is.

As we continue to navigate the challenges of the cost-of-living crisis and increasing demands on local services, Trowbridge Future have had to take some time to review and reflect on its core purpose and offer to the community. This has meant that the trustees and senior leadership team have had to make some courageous decisions to expand our services. This has resulted in the decision to open a dedicated youth centre in the heart of Trowbridge, that will enable us to develop a purpose-designed facility that will support up to 50 young people at one time. This has been something that has been missing from the town for some time. This expansion has been planned alongside the development of a larger town centre Community Hub in The Shires which will enable us to reach a larger audience, whilst also creating the space to give people the privacy to be supported to discuss issues and concerns they have.

Both these developments will strengthen the voluntary sector in Trowbridge, help increase the footfall in the town and support its overall regeneration. These developments have been made more possible through the generous support of Wiltshire Council through the Vacant Properties Future High Street Fund, giving money to the refurbishment and development of town centre properties. This dovetailed with the launch of our first ever £100 business challenge working with local businesses to raise funds for our new youth centre alongside a further generous donation and support from Selwood Housing. This has been remarkably successful in raising our profile in the town and demonstrating how we can diversify our income streams.

Alongside these developments we continue to support the professional development of our staff. We are committed to ensuring all our staff where possible are Mental Health First Aid trained. Our youth team have been trained through the National Youth Agency and the youth team are working hard to ensure that their youth sessions are delivering activities that align to the National Youth Agency National Occupational Standards.

We continue to look for further projects that we can offer beyond our core activities and this years has been no exception. It has been exciting to extend our Community Fridges with the delivery of our Cultural Cookery with Nariman. We have been able to celebrate the legacy of our successful Odyssey Project a collaboration with the National Theatre and Trowbridge Town Hall.

# Trowbridge Future

## THEORY OF CHANGE

Goal

Trowbridge Future will enhance the life of the communities of Trowbridge, by giving a voice to the most vulnerable, to see the change they want to see in their town,

Intended  
Outcome

Enable young people to reach their full potential in personal and social development.

Building relationships and peer support to enable ongoing positive journeys of change.

Activities

To provide sustainable, regular and holistic youth activities through informal learning and constructive activities in a safe, non-judgement environment.

To support local residents to come together and respond to issues and concern to improve their lives and the areas in which they live.

Current  
Condition

Trowbridge is a post-industrial town, with an aging population and few opportunities for young people. There is lack of access to support services and youth activities which is showing increasing demand for our services.



## SPOTLIGHT ON YOUTH

### In the last 12 months we have delivered the following key activities:

- Weekly youth sessions within Seymour & Studley Green areas of Trowbridge.
- Aligned our youth activities to the National Youth Agency curriculum and frameworks.
- Supported a group of our young people to participate in a theatre project in collaboration with Trowbridge Town Hall and the National Theatre Public Acts.
- Took a group of young people to London to visit the National Theatre.
- Provided activities for young people in academic years 5 & 6 at a summer school to aid their transition between primary and secondary school.
- Held a Christmas silent disco with a photo booth and props.
- Obtained, renovated and developed a new dedicated space for young people at Mill Street.
- Launched a successful £100 Business campaign, engaging local business and raising funds for our youth provision.
- Continued to work with our youth ambassadors to give our young people choice and a voice.
- Worked with Pentabus Theatre Company to do a workshop on the successful play 'Destiny' which covered topics on sexual assault and grooming.
- Provided work experience for 6 young people.
- 2 of our staff members began Level 4 Qualifications with the National Youth Agency and 1 staff member began a level 3 Qualification.
- Staff members also completed training on Healthier Relationships & Fundraising.
- We took groups of young people on cinema trips during school holidays.
- Recruited our first charity patron Florence Espeut-Nickless.

### Key Outcomes:

- Provided a new dedicated safe space for the young people of Trowbridge, with more opportunity for a wider range of activities to meet their needs and interests.
- Built professional working relationships with young people.
- Gave young people access to trusted adults for advice and signposting.
- Trowbridge Future Youth gave opportunity for young people to have a voice.
- Supported young people to access and participate in other community activities and groups.
- Supported young people and their families with any safeguarding needs, referrals to foodbanks, form filling and just being a listening ear and a place to turn to when they needed help and support.
- Helped young people transition from primary school to secondary school.
- Upskilled our youth team with JNC recognised youth work qualifications, Fundraising knowledge and skills to help young people understand their relationships.
- Upskilled young people with informal learning about different topics and life skills.
- Gave 6 young people the experience of what it is like to work for a local charity.



# Trowbridge Future Youth





## MILL STREET PROJECT

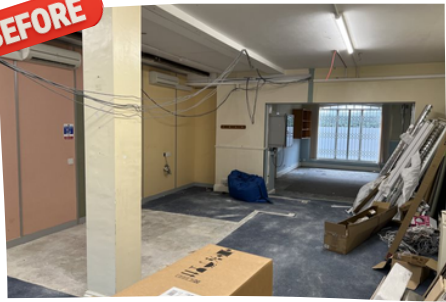
In October 2023, we picked up the keys to No.1 Mill Street and this started a brand new and exciting journey for us as a charity, to create a new and dedicated youth space within the centre of Trowbridge.

We were always aware that a youth centre was a very real need for Trowbridge, however with a lack of resources and funding, we knew we couldn't make this possible... at least not straight away!

We were lucky enough to be awarded a grant from the Vacant Commercial Units Fund as part of the overall Future High Streets fund that was awarded to Trowbridge in 2023 and this was distributed by Wiltshire Council, alongside a further generous grant from Selwood Housing. This was an incredible opportunity for us and we quickly realised that we could finally find a suitable venue within the town centre. After weeks and months of searching we finally settled on Mill Street and the renovations began.



BEFORE



AFTER



It took us around 4 months to fully renovate the building with the help of Cottage Building & Restoration Ltd who knocked down walls for us and made everything tidy and safe and then the mammoth task of decorating began and again we were lucky enough to have been supported with a huge donation of decorating materials from Beard Construction. We got to work, armed ourselves with paintbrushes and rollers and were helped along by members of Trowbridge Men's Shed who kindly came in every week to help us paint, put furniture together and fix and repair anything that we needed.

Whilst we were renovating the building, we also had extra support financially from the local businesses taking part in our £100 Business Challenge and we celebrated this huge achievement with everyone who had helped us along the journey at our opening event in April 2024

Mill Street youth centre was officially opened by our first charity patron Florence Espeut-Nickless who is a successful playwright and actress and a huge advocate for young people and the Mayor of Trowbridge, Councillor Stephen Cooper who kindly made us his charity of the year and raised money and brought awareness for us throughout the year by doing his mayoral events.





## £100 BUSINESS CHALLENGE

In August 2023 we launched our successful £100 Business Challenge. Our reasoning behind the challenge was to help us fundraise for a dedicated youth venue in Trowbridge. We recognised that we had very quickly outgrown the venues that we were using, which were primarily small portakabins and the effect this had on the young people of the town and the limitations we faced with the range of activities we were able to provide. As the county town of Wiltshire, we felt like Trowbridge deserved a safe space for it's young people to socialise with peers, develop new skills and build relationships with trusted adults.

Our Youth Team approached over 300 local businesses around the Trowbridge area, informing them of the challenge and asking them to help us fundraise amongst their colleagues for a new, much larger, dedicated youth venue in the town. We had a wide variety of local businesses sign themselves up for the challenge, these included: **Stone Developments Wiltshire LTD**, **Thomas Porter Wealth Management**, **Apricity Theatre**, **Tesco**, **Katie Lifts**, **Alert Systems**, **Sash Windows & General Carpentry est. 2004**, **Islington Motors & Trowbridge Ford**, **The Stallard's Inn**, **THG Labs**, **Gallagher LTD** and **Handy Mart**, as well as donations from individuals around the town. The businesses got creative amongst their teams and participated in all sorts of ways, fancy dress days, sponsored cycles, sports matches, exercise classes and poetry writing.



The challenge exceeded our expectations, and all businesses together raised £2390, with the top spot going to **Stone Developments Wiltshire LTD** who managed to raise a total of £697.50, all of which contributed towards our newly renovated youth venue in the centre of Trowbridge. Not only did the challenge bring in donations for our youth centre, but it also boosted a sense of community in the town, allowing local businesses to build a relationship with and support a local charity. All participants were invited to our launch event the following year to celebrate all that they had contributed.

As our first £100 Business Challenge was so successful, this is something that we now wish to launch annually and build upon each year. We hope to engage more local businesses and raise more funds for our general running costs so that we can continue to offer our activities for free for the young people of Trowbridge and the surrounding areas.



## **SPOTLIGHT ON COMMUNITY**

**Over the past 12 months we have delivered the following key activities:**

- Providing practical advice, support and signposting at our central Hub.
- Three Community Fridges on the Seymour, Studley Green and Longfield estates, distributing unsold food items from local supermarket, a bakery, and a fast food outlet. We also received additional funding to purchase supplementary food items to support residents with the cost of living.
- Two Kindness Cafes on the Studley Green and Seymour Estates, where people can come together in a warm, safe space, helping to alleviate social isolation.
- Two weekly craft groups in the Shires Shopping Centre Hub and The Seymour Hub. Local residents can come together and join a common activity, promoting wellbeing and peer to peer support.
- A day trip to Poole for the Seymour Kindness Café attendees.
- Transitioned into a larger capacity Community Hub in the Shires Shopping Centre, doubling the space available to local residents.
- Deliver bi weekly cultural cookery lessons in association with Hubbub.
- Distributed 150 Christmas Hampers through the community fridges, donated by Banner.
- Provided robust English lessons for those who speak other languages, also engaging with Wiltshire Council Refugee and Resettlement team
- Supported Mark TUGS Mental Health Support groups and the Veterans monthly drop in.

### **Key Outcomes:**

- Offering substantial help through fresh food and personal hygiene product donations.
- Distribution of supermarket and energy vouchers to the most vulnerable residents in the local community
- Provision of air fryers and slow cookers, offering residents to opportunity to cook healthy and nutritious meals whilst lowering their energy costs
- Preventing large amounts of food waste on a weekly basis.
- Engaging with particularly vulnerable audiences to support them with specific signposting and support around issues such as accessing employment, benefit advice, tackling loneliness and mental health needs.
- Helping combat the feeling of helplessness and isolation, particularly for the ageing population and those with significant mental health concerns.
- Giving recipients a sense of belonging and self-importance as they develop new friends and feel connected with the local community.



# Trowbridge Future

## SNAPSHOT OF THE YEAR

Community



ENGLISH LESSONS ATTENDEES 289

THE SHIRES  
VISITORS  
**2,637**



COMMUNITY  
HUB DROP-IN  
DAYS

**192**



NO. OF  
KINDNESS  
CAFES

**104**

CRAFT  
CAFES



**104**

**624**



NO OF FOOD  
COLLECTIONS

**144**

NO OF  
COMMUNITY  
FRIDGES



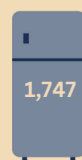
**4,016**

SEYMOUR  
FRIDGE  
VISITORS



STUDLEY GREEN  
FRIDGE VISITORS

**1,523**



LONGFIELD  
FRIDGE  
VISITORS

**1,747**

Youth



**102**

Youth  
Sessions  
Delivered



**999**

No. of youth  
session  
places  
provided

Funds raised  
through our  
£100 Business  
challenge



**£2390**

**246**

Young  
People  
Engaged



# Trowbridge Future

- Making community members feel part of a family.
- Building positive relationships with people on the road to recovery from addiction, rough sleeping, and mental health breakdowns to support them on to positive journeys of change. Engaged with the Gypsy, Roma and Traveller and boat dweller population.
- Prevent isolated people entering high-end crisis medical care and prevent suicide.
- Providing positive progression routes and training opportunities for volunteers.
- Responding flexibly to the changing needs of the community.





## FINANCIAL SUMMARY

### Trowbridge Community Area Future

#### Detailed Statement of Financial Activities for the Year Ended 31 March 2024

	31.3.24 £	31.3.23 £
<b>INCOME AND ENDOWMENTS</b>		
<b>Donations and legacies</b>		
Donations	15,676	20,672
<b>Charitable activities</b>		
Grants	<u>362,313</u>	<u>203,697</u>
<b>Total incoming resources</b>	377,989	224,369
<b>EXPENDITURE</b>		
<b>Charitable activities</b>		
Wages	182,560	161,401
Pensions	3,067	8,184
Rent	8,895	-
Insurance	2,214	1,189
Light and heat	7,941	1,430
Telephone	2,736	2,467
Postage and stationery	1,811	1,137
Advertising	1,056	1,118
Sundries	14,316	5,208
Travel & Subsistence	1,665	3,990
Activity Expenses	49,885	24,862
Hire of a room	1,061	356
Staff Training	2,736	2,835
Repairs and renewals	42,834	3,146
Bank Charges	107	101
Accountancy Fees	<u>792</u>	<u>660</u>
	323,676	218,084
<b>Other</b>		
Depreciation of tangible fixed assets	<u>6,957</u>	<u>4,977</u>
<b>Total resources expended</b>	<u>330,633</u>	<u>223,061</u>
<b>Net income</b>	<u>47,356</u>	<u>1,308</u>



# Trowbridge Future

## GOALS FOR NEXT YEAR

Sustainability	Belonging	Youth	Community
Undertake annual reviews of our boundaries and purpose in strategy day and regular staff meetings.	Embed our core values into our everyday standards, work ethic and practice.	Open the Mill Street youth centre Venue	Establish new, larger Community Hub, with 10% increased footfall.
Help to promote and refer to our key partner organisations where appropriate.	Identify our client group and any community needs, research and explore groups and individuals that we are not reaching.	Look after & settle our current young members	Open Community Hub from Monday to Thursday providing drop-in sessions, advice, signposting, and a welcoming, safe place like a public living room.
Ensure that we recognise our TF teams skills and provide a chance for building on their skills.	Realistic goals and expectations for staff against their skills and aptitude.	Introduce NYA curriculum into the planning of our activities	Complete at least 9 regular pick ups each of week of fresh food.
Establish a clear sustainability and fundraising strategy along with the Fundraising Sub-Committee, with an annual funding timeline.	Ensure that the TF team have adequate time for information handovers, administrations duties	Continue to meet with our youth ambassadors	Pilot Community Cookery programme with bi-weekly sessions for up to 10 people each session, with Hubbub: a national network of community fridges.
Develop and deliver a workforce strategy.	Undertake annual reviews of our policy and procedures and ensure that any changes are reflected.	Continue to research street based working, monitor trends & respond.	Continue to work with Selwood Housing & Wiltshire Council to support social and physical improvement projects in the 3 priority neighbourhoods.
Undertake regular reviews of our risk strategy to ensure our sustainability.	Ensure regular review of our risk assessments.	Maintain & strengthen our current and key working partnerships with other community groups in the area	Continue to work with Fighting Hunger with Food waste to provide additional food donations to Community Fridges



# Trowbridge Future

## WORKING PARTNERSHIPS

### Delivery

- Wiltshire healthier Communities
- TSUG
- Brews & Wets
- Pentabus
- Trowbridge Eco
- Active Trowbridge
- Wiltshire Rural Music
- Educare
- National Theatre & Public Acts
- WOLT

### Network

- Trowbridge Chamber of Commerce
- Multi Faith Forum
- Trowbridge Pride
- Celebrating Age
- Wiltshire Youth for Christ
- 4 Youth
- The Bank of England
- Trowbridge Men's Shed
- BIBO Studios
- Youth Action Wiltshire
- National Citizen Service
- Trowbridge Lions
- Sustrans
- Wiltshire Sight
- Local Schools
- Alabare
- Amber Housing
- Alzheimer's Support
- Haines & Smith
- Wiltshire & Swindon Youth Network
- Trowbridge Mosque
- Blue Cross
- Pets at Home
- Apricity Theatre
- Mighty Girls

### Referral

- Fearless
- Storehouse Foodbank
- Wiltshire MASH Hub
- Wiltshire Adult Social Care
- Racial Equality Council
- DHI Connect
- Turning Point
- Youth Offending Team
- Julian House
- Families Out Loud
- Barnardos

### Key

- Selwood Housing
- Trowbridge Town Council
- Sovereign Housing
- National Lottery
- Wiltshire Community Foundation
- Neighbourly
- Greggs
- Sainsburys
- Marks & Spencer
- National Youth Agency
- Trowbridge Town Hall
- University of Bath
- St James Trust

### Advisory

- Trowbridge Police
- Racial Equality Council
- Trowbridge Child Wellbeing Partnership
- NVCO
- Charity Commission
- Debt Advisory Service
- Centre for Independent Living
- Wiltshire Housing
- Wiltshire Money
- GP Practices
- Wiltshire Council
- Wiltshire Public Health



## VOICES OF OUR PARTICIPANTS

### Youth Provision

"Lucas loves coming. The new facility is more than perfect. Added bonus the staff are great and easy to approach".

**Emma Cocker - Parent**

"Trowbridge Future has always been very supportive for many of my Daughter's needs and we are very grateful that they gave her a great experience when they took her for work experience and she really enjoyed her 3 days working with them. Also love the new youth centre, its a real home from home (With the added extra of a pool table) that poppy loves to go to".

**Wendy Perry - Parent**

"Trowbridge Future has created an environment where my child can have fun, make friends and build his confidence and life skills. Without all of what Trowbridge Future offer, my son would be bored in the evening and wouldn't have gained the confidence that he has."

**Claire Beavis - Parent**

### Cookery

"I don't really eat vegetables. I don't like them - I don't anything but like English food. But when it's cooked like this, when it's all mixed together with lovely spices and herbs then I love it and it makes me want to eat. I don't eat well, but this food makes me eat properly."

### Shires Hub

"this is this is a safe place. I come to Trowbridge future every day. ... They're a lifeline to me. They've helped me with so many things, from ringing the doctor, to help me calm down when I'm a bit suicidal.... I'm glad it's around.... I come from Devizes and they haven't got all this support."

### Community Provision

### Partnerships

"Trowbridge Future is such a valuable resource for so many people in our local community and we are really proud to support its work. We're thrilled that we could give people the chance to explore the Dorset coast for the day, and to enjoy the time together."

**Trina Moran, Training Manager, Cereal Partners**

"Trowbridge Future have always been an active partner of the Town Hall. Building on the success of last year's collaboration on The Four Winds, it's been wonderful to welcome back TF Youth members into our new community theatre project. We hugely value Trowbridge Future's regular contribution to Celebrate community paper by sharing articles about projects that they're undertaking. TF plays a vital role in the community, and we look forward to even closer collaboration in the future."

**Tessa Slack - Trowbridge Town Hall**

"Trowbridge Future has a profound positive impact on our local community, fostering strong partnerships with Wiltshire Council to drive change. Their exceptional youth club offer provides a safe, inclusive space for young people to grow, while their detached youth work reaches those most at risk, offering vital support and guidance. Through their incredible efforts to reduce food waste and support the most vulnerable, Trowbridge Future creates a healthier, more resilient, and caring environment for everyone."

**Liam Cripps - Strategic & Engagement Partnerships Manager. Wiltshire Council**

# Trowbridge Future

## OUR CORPORATE SPONSORS



Cereal Partners Worldwide



Marks & Spencer



Islington Motor Group  
& Trowbridge Ford



Banner Ltd

ASDA



Sainsburys



Greggs



Neighbourly



Beard  
Construction

# Trowbridge Future

## OUR FUNDING PARTNERSHIPS

We would not be able to do the important work for our local community, without the generosity of our funding partnerships. We would like to thank the following funders & businesses for their continued support.



**Trowbridge  
Town Trust**



**Ray Harris  
Charitable Trust**





## SPECIAL THANKS

We would like to extend a special thankyou to the following people ...

### **Trowbridge Future - Board of Trustees**

Our trustees are the brains behind our charity and regularly give up their time voluntarily, to ensure that the charity is looked after and the people of Trowbridge have a brighter future. They consistently support us, to support all of you!

### **Trowbridge Future - Staff & Volunteers**

Our dedicated staff and volunteers are the heart and soul of our work and we would not be able to reach and support as many people throughout the town, without their smiling faces, their knowledge and skills, positive energy and overall enthusiasm.

### **Key Funders**

We couldn't do the important work that we do as a charity without the financial support from all of our key funders.

### **Partnerships**

We sometimes need some help from our partnership organisations and the difference it can make working together with like minded organisations is incredible.

### **Local Community**

We meet some incredible people across Trowbridge and the surrounding area on a daily basis. We are sending a huge thankyou to you all for sharing your voice and letting us know what is important to you and trusting us enough to help you achieve your goals.



Report of the Trustees and Financial Statements

for the Year Ended 31 March 2024

for

Trowbridge Community Area Future

Mander Duffill  
Chartered Accountants  
The Old Post Office  
41-43 Market Place  
Chippenham  
Wiltshire  
SN15 3HR

**Trowbridge Community Area Future**

**Contents of the Financial Statements**  
**for the Year Ended 31 March 2024**

	<b>Page</b>
<b>Report of the Trustees</b>	<b>1</b>
<b>Independent Examiner's Report</b>	<b>2</b>
<b>Statement of Financial Activities</b>	<b>3</b>
<b>Balance Sheet</b>	<b>4</b>
<b>Notes to the Financial Statements</b>	<b>5 to 8</b>
<b>Detailed Statement of Financial Activities</b>	<b>9</b>

**Trowbridge Community Area Future**

**Report of the Trustees**  
**for the Year Ended 31 March 2024**

The trustees present their report with the financial statements of the charity for the year ended 31 March 2024. The trustees have adopted the provisions of Accounting and Reporting by Charities: Statement of Recommended Practice applicable to charities preparing their accounts in accordance with the Financial Reporting Standard applicable in the UK and Republic of Ireland (FRS 102) (effective 1 January 2019).

**STRUCTURE, GOVERNANCE AND MANAGEMENT**

**Governing document**

The charity is controlled by its governing document, a deed of trust and constitutes an unincorporated charity.

**REFERENCE AND ADMINISTRATIVE DETAILS**

**Registered Charity number**

1165254

**Principal address**

80 Charles Street  
Trowbridge  
Wiltshire  
BA14 8ND

**Trustees**

C Kay (resigned 21.3.24)  
Miss J L Trigg  
Mrs A J Jones  
Mrs P A Baker  
D R J Whewell  
S M Palmen  
R E James  
Mrs V Buchanan  
Mrs A Bamber-Jones

**Independent Examiner**

Andy Davis FCA  
Mander Duffill Chartered Accountants  
The Old Post Office  
41-43 Market Place  
Chippenham  
Wiltshire  
SN15 3HR

Approved by order of the board of trustees on 05/11/2024 and signed on its behalf by:



.....  
R E James - Trustee



**Independent Examiner's Report to the Trustees of**  
**Trowbridge Community Area Future**

**Independent examiner's report to the trustees of Trowbridge Community Area Future**

I report to the charity trustees on my examination of the accounts of Trowbridge Community Area Future (the Trust) for the year ended 31 March 2024.

**Responsibilities and basis of report**

As the charity trustees of the Trust you are responsible for the preparation of the accounts in accordance with the requirements of the Charities Act 2011 ('the Act').

I report in respect of my examination of the Trust's accounts carried out under Section 145 of the Act and in carrying out my examination I have followed all applicable Directions given by the Charity Commission under Section 145(5)(b) of the Act.

**Independent examiner's statement**

Since your charity's gross income exceeded £250,000 your examiner must be a member of a listed body. I can confirm that I am qualified to undertake the examination because I am a member of the Institute of Chartered Accountants in England and Wales, which is one of the listed bodies.

I have completed my examination. I confirm that no material matters have come to my attention in connection with the examination giving me cause to believe that in any material respect:

1. accounting records were not kept in respect of the Trust as required by Section 130 of the Act; or
2. the accounts do not accord with those records; or
3. the accounts do not comply with the applicable requirements concerning the form and content of accounts set out in the Charities (Accounts and Reports) Regulations 2008 other than any requirement that the accounts give a true and fair view which is not a matter considered as part of an independent examination.

I have no concerns and have come across no other matters in connection with the examination to which attention should be drawn in this report in order to enable a proper understanding of the accounts to be reached.



Andy Davis FCA  
The Institute of Chartered Accountants in England and Wales

Mander Duffill Chartered Accountants  
The Old Post Office  
41-43 Market Place  
Chippenham  
Wiltshire  
SN15 3HR

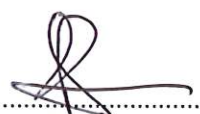
Date: 13.11.2024

**Trowbridge Community Area Future**

**Balance Sheet**  
**31 March 2024**

	Notes	Unrestricted fund £	Restricted fund £	31.3.24 Total funds £	31.3.23 Total funds £
<b>FIXED ASSETS</b>					
Tangible assets	3	24,619	-	24,619	19,020
<b>CURRENT ASSETS</b>					
Debtors	4	1,195	-	1,195	1,088
Cash at bank		<u>42,599</u>	<u>60,375</u>	<u>102,974</u>	<u>57,388</u>
		43,794	60,375	104,169	58,476
<b>CREDITORS</b>					
Amounts falling due within one year	5	(16,977)	-	(16,977)	(13,040)
<b>NET CURRENT ASSETS</b>		<u>26,817</u>	<u>60,375</u>	<u>87,192</u>	<u>45,436</u>
<b>TOTAL ASSETS LESS CURRENT LIABILITIES</b>		<u>51,436</u>	<u>60,375</u>	<u>111,812</u>	<u>64,456</u>
<b>NET ASSETS</b>		<u>51,436</u>	<u>60,375</u>	<u>111,812</u>	<u>64,456</u>
<b>FUNDS</b>	6				
Unrestricted funds				51,436	25,605
Restricted funds				<u>60,375</u>	<u>38,851</u>
<b>TOTAL FUNDS</b>				<u>111,812</u>	<u>64,456</u>

The financial statements were approved by the Board of Trustees and authorised for issue on 05/11/2024 and were signed on its behalf by:

  
.....  
R E James - Trustee

The notes form part of these financial statements

**Trowbridge Community Area Future**

**Statement of Financial Activities**  
**for the Year Ended 31 March 2024**

	Notes	Unrestricted fund £	Restricted fund £	31.3.24 Total funds £	31.3.23 Total funds £
<b>INCOME AND ENDOWMENTS FROM</b>					
Donations and legacies		12,619	3,057	15,676	20,672
<b>Charitable activities</b>					
General Activity		<u>19,400</u>	<u>342,913</u>	<u>362,313</u>	<u>203,697</u>
<b>Total</b>		<u>32,019</u>	<u>345,970</u>	<u>377,989</u>	<u>224,369</u>
<b>EXPENDITURE ON</b>					
<b>Charitable activities</b>					
General Activity		7,819	315,857	323,676	218,084
Other		<u>6,957</u>	<u>-</u>	<u>6,957</u>	<u>4,977</u>
<b>Total</b>		<u>14,776</u>	<u>315,857</u>	<u>330,633</u>	<u>223,061</u>
<b>NET INCOME</b>		17,243	30,113	47,356	1,308
<b>RECONCILIATION OF FUNDS</b>					
Total funds brought forward		<u>25,605</u>	<u>38,851</u>	<u>64,456</u>	<u>63,148</u>
<b>TOTAL FUNDS CARRIED FORWARD</b>		<u><u>42,848</u></u>	<u><u>68,964</u></u>	<u><u>111,812</u></u>	<u><u>64,456</u></u>

The notes form part of these financial statements

## Trowbridge Community Area Future

### Notes to the Financial Statements for the Year Ended 31 March 2024

#### 1. ACCOUNTING POLICIES

##### **Basis of preparing the financial statements**

The financial statements of the charity, which is a public benefit entity under FRS 102, have been prepared in accordance with the Charities SORP (FRS 102) 'Accounting and Reporting by Charities: Statement of Recommended Practice applicable to charities preparing their accounts in accordance with the Financial Reporting Standard applicable in the UK and Republic of Ireland (FRS 102) (effective 1 January 2019)', Financial Reporting Standard 102 'The Financial Reporting Standard applicable in the UK and Republic of Ireland' and the Charities Act 2011. The financial statements have been prepared under the historical cost convention.

##### **Income**

All income is recognised in the Statement of Financial Activities once the charity has entitlement to the funds, it is probable that the income will be received and the amount can be measured reliably.

##### **Expenditure**

Liabilities are recognised as expenditure as soon as there is a legal or constructive obligation committing the charity to that expenditure, it is probable that a transfer of economic benefits will be required in settlement and the amount of the obligation can be measured reliably. Expenditure is accounted for on an accruals basis and has been classified under headings that aggregate all cost related to the category. Where costs cannot be directly attributed to particular headings they have been allocated to activities on a basis consistent with the use of resources.

##### **Tangible fixed assets**

Depreciation is provided at the following annual rates in order to write off each asset over its estimated useful life.

Plant and machinery	- 20% on reducing balance
Fixtures and fittings	- 20% on reducing balance
Computer equipment	- 25% on cost

##### **Taxation**

The charity is exempt from tax on its charitable activities.

##### **Fund accounting**

Unrestricted funds can be used in accordance with the charitable objectives at the discretion of the trustees.

Restricted funds can only be used for particular restricted purposes within the objects of the charity. Restrictions arise when specified by the donor or when funds are raised for particular restricted purposes.

Further explanation of the nature and purpose of each fund is included in the notes to the financial statements.

##### **Hire purchase and leasing commitments**

Rentals paid under operating leases are charged to the Statement of Financial Activities on a straight line basis over the period of the lease.

##### **Pension costs and other post-retirement benefits**

The charity operates a defined contribution pension scheme. Contributions payable to the charity's pension scheme are charged to the Statement of Financial Activities in the period to which they relate.



Trowbridge Community Area Future

Notes to the Financial Statements - continued  
for the Year Ended 31 March 2024

**2. TRUSTEES' REMUNERATION AND BENEFITS**

There were no trustees' remuneration or other benefits for the year ended 31 March 2024 nor for the year ended 31 March 2023.

**Trustees' expenses**

There were no trustees' expenses paid for the year ended 31 March 2024 nor for the year ended 31 March 2023.

**3. TANGIBLE FIXED ASSETS**

	Plant and machinery £	Fixtures and fittings £	Computer equipment £	Totals £
<b>COST</b>				
At 1 April 2023	20,628	4,927	3,691	29,246
Additions	-	9,319	3,237	12,556
At 31 March 2024	<u>20,628</u>	<u>14,246</u>	<u>6,928</u>	<u>41,802</u>
<b>DEPRECIATION</b>				
At 1 April 2023	7,426	1,325	1,475	10,226
Charge for year	<u>2,640</u>	<u>2,587</u>	<u>1,730</u>	<u>6,957</u>
At 31 March 2024	<u>10,066</u>	<u>3,912</u>	<u>3,205</u>	<u>17,183</u>
<b>NET BOOK VALUE</b>				
At 31 March 2024	<u>10,562</u>	<u>10,334</u>	<u>3,723</u>	<u>24,619</u>
At 31 March 2023	<u>13,202</u>	<u>3,602</u>	<u>2,216</u>	<u>19,020</u>

**4. DEBTORS: AMOUNTS FALLING DUE WITHIN ONE YEAR**

	31.3.24 £	31.3.23 £
Trade debtors	95	838
Other debtors	<u>1,100</u>	<u>250</u>
	<u>1,195</u>	<u>1,088</u>



**Trowbridge Community Area Future**

**Notes to the Financial Statements - continued**  
**for the Year Ended 31 March 2024**

**5. CREDITORS: AMOUNTS FALLING DUE WITHIN ONE YEAR**

	31.3.24 £	31.3.23 £
Trade creditors	3,581	205
Other creditors	<u>13,396</u>	<u>12,835</u>
	<u>16,977</u>	<u>13,040</u>

**6. MOVEMENT IN FUNDS**

	At 1.4.23 £	Net movement in funds £	At 31.3.24 £
<b>Unrestricted funds</b>			
General fund	64,456	(13,019)	51,436
<b>Restricted funds</b>			
Restricted	-	60,375	60,375
<b>TOTAL FUNDS</b>	<u>64,456</u>	<u>47,356</u>	<u>111,812</u>

Net movement in funds, included in the above are as follows:

	Incoming resources £	Resources expended £	Movement in funds £
<b>Unrestricted funds</b>			
General fund	32,019	(14,776)	17,243
<b>Restricted funds</b>			
Restricted	345,970	(315,857)	30,113
<b>TOTAL FUNDS</b>	<u>377,989</u>	<u>(330,633)</u>	<u>47,356</u>

**Comparatives for movement in funds**

	At 1.4.22 £	Net movement in funds £	At 31.3.23 £
<b>Unrestricted funds</b>			
General fund	30,106	(4,501)	25,605
<b>Restricted funds</b>			
Restricted	33,042	5,809	38,851
<b>TOTAL FUNDS</b>	<u>63,148</u>	<u>1,308</u>	<u>64,456</u>

**Trowbridge Community Area Future**  
**Notes to the Financial Statements - continued**  
**for the Year Ended 31 March 2024**

**6. MOVEMENT IN FUNDS - continued**

Comparative net movement in funds, included in the above are as follows:

	Incoming resources £	Resources expended £	Movement in funds £
<b>Unrestricted funds</b>			
General fund	16,700	(21,201)	(4,501)
<b>Restricted funds</b>			
Restricted	207,669	(201,860)	5,809
	<hr/>	<hr/>	<hr/>
<b>TOTAL FUNDS</b>	<u>224,369</u>	<u>(223,061)</u>	<u>1,308</u>

A current year 12 months and prior year 12 months combined position is as follows:

	At 1.4.22 £	Net movement in funds £	At 31.3.24 £
<b>Unrestricted funds</b>			
General fund	30,106	21,330	51,436
<b>Restricted funds</b>			
Restricted	33,042	27,333	60,375
	<hr/>	<hr/>	<hr/>
<b>TOTAL FUNDS</b>	<u>63,148</u>	<u>48,664</u>	<u>111,812</u>

**7. RELATED PARTY DISCLOSURES**

There were no related party transactions for the year ended 31 March 2024.

**Trowbridge Community Area Future**

**Detailed Statement of Financial Activities**  
**for the Year Ended 31 March 2024**

	31.3.24 £	31.3.23 £
<b>INCOME AND ENDOWMENTS</b>		
<b>Donations and legacies</b>		
Donations	15,676	20,672
<b>Charitable activities</b>		
Grants	<u>362,313</u>	<u>203,697</u>
<b>Total incoming resources</b>	377,989	224,369
 <b>EXPENDITURE</b>		
<b>Charitable activities</b>		
Wages	182,560	161,401
Pensions	3,067	8,184
Rent	8,895	-
Insurance	2,214	1,189
Light and heat	7,941	1,430
Telephone	2,736	2,467
Postage and stationery	1,811	1,137
Advertising	1,056	1,118
Sundries	14,316	5,208
Travel & Subsistence	1,665	3,990
Activity Expenses	49,885	24,862
Hire of a room	1,061	356
Staff Training	2,736	2,835
Repairs and renewals	42,834	3,146
Bank Charges	107	101
Accountancy Fees	<u>792</u>	<u>660</u>
	323,676	218,084
 <b>Other</b>		
Depreciation of tangible fixed assets	<u>6,957</u>	<u>4,977</u>
<b>Total resources expended</b>	<u>330,633</u>	<u>223,061</u>
 <b>Net income</b>	<u><u>47,356</u></u>	<u><u>1,308</u></u>

This page does not form part of the statutory financial statements







CHARITY COMMISSION  
FOR ENGLAND AND WALES

Trowbridge Community Area Future

1165254

## Receipts and payments accounts

CC16a

For the period from	Period start date	To	Period end date
	01/04/2023		31/03/2024

### Section A Receipts and payments

	Unrestricted funds to the nearest £	Restricted funds to the nearest £	Endowment funds to the nearest £	Total funds to the nearest £	Last year to the nearest £
<b>A1 Receipts</b>					
Grants and Donations	32,019	345,970	-	377,989	224,369
	-	-	-	-	-
	-	-	-	-	-
	-	-	-	-	-
	-	-	-	-	-
	-	-	-	-	-
	-	-	-	-	-
<b>Sub total (Gross income for AR)</b>	<b>32,019</b>	<b>345,970</b>	<b>-</b>	<b>377,989</b>	<b>224,369</b>
<b>A2 Asset and investment sales, (see table).</b>					
n/a	-	-	-	-	-
	-	-	-	-	-
<b>Sub total</b>	<b>-</b>	<b>-</b>	<b>-</b>	<b>-</b>	<b>-</b>
<b>Total receipts</b>	<b>32,019</b>	<b>345,970</b>	<b>-</b>	<b>377,989</b>	<b>224,369</b>
<b>A3 Payments</b>					
Wages, Salaries & NI	-	185,627	-	185,627	166,884
Rent	750	8,145	-	8,895	-
Advertising	209	847	-	1,056	1,118
Insurance	-	2,214	-	2,214	1,189
Sundries	2,480	11,836	-	14,316	5,891
Direct Costs	2,283	97,667	-	99,950	35,950
Postage & Stationary	814	997	-	1,811	1,137
Telephone	1,390	1,346	-	2,736	2,467
Heat & Light	-	7,942	-	7,942	1,430
<b>Sub total</b>	<b>7,927</b>	<b>316,620</b>	<b>-</b>	<b>324,547</b>	<b>216,067</b>
<b>A4 Asset and investment purchases, (see table)</b>					
	-	-	-	-	-
	-	-	-	-	-
<b>Sub total</b>	<b>-</b>	<b>-</b>	<b>-</b>	<b>-</b>	<b>-</b>
<b>Total payments</b>	<b>7,927</b>	<b>316,620</b>	<b>-</b>	<b>324,547</b>	<b>216,067</b>
<b>Net of receipts/(payments)</b>	<b>24,092</b>	<b>29,350</b>	<b>-</b>	<b>53,442</b>	<b>8,302</b>
<b>A5 Transfers between funds</b>	<b>-</b>	<b>-</b>	<b>-</b>	<b>-</b>	<b>-</b>
<b>A6 Cash funds last year end</b>	<b>18,507</b>	<b>31,025</b>	<b>-</b>	<b>49,532</b>	<b>49,056</b>
<b>Cash funds this year end</b>	<b>42,599</b>	<b>60,375</b>	<b>-</b>	<b>102,974</b>	<b>57,358</b>

## Section B Statement of assets and liabilities at the end of the period

Categories	Details	Unrestricted funds to nearest £	Restricted funds to nearest £	Endowment funds to nearest £
B1 Cash funds	Cash at Bank	42,353	60,375	-
	Petty Cash	246	-	-
		-	-	-
	<b>Total cash funds</b>	<b>42,599</b>	<b>60,375</b>	<b>-</b>
	(agree balances with receipts and payments account(s))			

	Details	Unrestricted funds to nearest £	Restricted funds to nearest £	Endowment funds to nearest £
B2 Other monetary assets		-	-	-
		-	-	-
		-	-	-
		-	-	-
		-	-	-
		-	-	-


	Details	Fund to which asset belongs	Cost (optional)	Current value (optional)
B3 Investment assets			-	-
			-	-
			-	-
			-	-
			-	-

	Details	Fund to which asset belongs	Cost (optional)	Current value (optional)
B4 Assets retained for the charity's own use	Portakabin	Restricted	-	10,562
	Equipment	Restricted	-	10,334
	Printers, Computers, Phones	Unrestricted	-	3,723
			-	-
			-	-
			-	-
			-	-
			-	-

	Details	Fund to which liability relates	Amount due (optional)	When due (optional)
B5 Liabilities	Trade Creditors		3,580	
	PAYE & NIC	Restricted	2,893	
	Net Wages & Pensions	Restricted	8,591	
	Accruals		792	
	Other Creditors		1,121	

Signed by one or two trustees on behalf of all the trustees

Signature



Print Name

R E James

Date of approval

5.11.24

**Independent Examiner's Report to the Trustees of  
Trowbridge Community Area Future**

**Independent examiner's report to the trustees of Trowbridge Community Area Future**

I report to the charity trustees on my examination of the accounts of Trowbridge Community Area Future (the Trust) for the year ended 31 March 2024.

**Responsibilities and basis of report**

As the charity trustees of the Trust you are responsible for the preparation of the accounts in accordance with the requirements of the Charities Act 2011 ('the Act').

I report in respect of my examination of the Trust's accounts carried out under Section 145 of the Act and in carrying out my examination I have followed all applicable Directions given by the Charity Commission under Section 145(5)(b) of the Act.

**Independent examiner's statement**

Since your charity's gross income exceeded £250,000 your examiner must be a member of a listed body. I can confirm that I am qualified to undertake the examination because I am a member of the Institute of Chartered Accountants in England and Wales, which is one of the listed bodies.

I have completed my examination. I confirm that no material matters have come to my attention in connection with the examination giving me cause to believe that in any material respect:

1. accounting records were not kept in respect of the Trust as required by Section 130 of the Act; or
2. the accounts do not accord with those records; or
3. the accounts do not comply with the applicable requirements concerning the form and content of accounts set out in the Charities (Accounts and Reports) Regulations 2008 other than any requirement that the accounts give a true and fair view which is not a matter considered as part of an independent examination.

I have no concerns and have come across no other matters in connection with the examination to which attention should be drawn in this report in order to enable a proper understanding of the accounts to be reached.



Andy Davis FCA  
The Institute of Chartered Accountants in England and Wales

Mander Duffill Chartered Accountants  
The Old Post Office  
41-43 Market Place  
Chippenham  
Wiltshire  
SN15 3HR

Date: 13.11.2024