



Registered Charity 1165231 (England and Wales)

Friends of Crystal Palace Dinosaurs

Trustees' Annual Report and Statement of Financial Activity

1 April 2022 – 31 March 2023

January 2024

Trustees' Annual Report and Statement of Financial Activity

1 April 2022 – 31 March 2023

Contents

1	Approval of the Board of Trustees	5
2	Executive Summary	6
3	Reference and Administration Details	7
3.1	Charity Name & Registration	7
3.2	Mission Statement	8
3.3	Charity Contact Details	8
3.4	Organisational Structure	8
3.5	Key Stakeholders	10
3.6	Informal Partnerships	11
3.7	Grantmaking and Funds	12
3.8	Risk Assessment	12
4	Structure, Governance and Management	11
4.1	Type of Governance	11
4.2	Charitable Objects	12
4.3	Trustees	13
4.4	Meetings	14
5	Activities, Achievements and Performance	15
5.1	Statutory Declaration	15
5.2	<i>The Art and Science of the Crystal Palace Dinosaurs</i>	15

5.3	Beyond the Dinosaurs	17
5.4	<i>Palaeotherium magnum</i> Research and Rebuild	18
5.5	Conservation	19
5.6	Dinosaur Monitor	21
5.7	Digital Dinosaur Archive: 3D Scans of the Sculptures	22
5.8	Reviving Lost Worlds: A Community Palaeo Planting Project	23
5.9	Dinosaur Days: Heritage Open Days	24
5.10	Public Engagement	25
6	Support for External Projects	26
6.1	Support of Historic England's Crystal Palace Dinosaurs Research Project	26
6.2	Support of 'Restoring the Heritage of the Iconic Crystal Palace Park for All' National Lottery Heritage Fund Application	27
6.3	Speaking Stones	27
6.4	<i>Extraordinary Extinct: The Crystal Palace Dinosaurs</i>	28
7	Awards	29
7.1	Dinosaur Bridge RIBA Nominations	29
8	Communications	29
8.1	Website, Newsletter and Social Media	29
9	How the Public has Benefited	30
10	Financial Review	31
10.1	Explanation of Accounts	31
10.2	Remuneration	32
10.3	Financial Status	33
10.4	Details of Any Funds Materially in Deficit	33
11	Statement of Financial Activity 2022/23	33
11.1	Declaration	33

11.2 Accounts for Financial Year 2022/23	33
11.3 Statement of Assets and Liabilities	35
11.4 Designated or Restricted Funds	35
12 Independent Examiner's Report on the Accounts	35

1 Approval of the Board of Trustees

The Trustees declare that they have approved the following Annual Report and Statement of Financial Activity.

Signed on behalf of the Trustees

A handwritten signature in black ink, reading 'Ellinor Michel'. The signature is written in a cursive style with a large initial 'E'.

Name: Dr A. Ellinor Michel Date: 30 January 2024

Role: Chair, Friends of Crystal Palace Dinosaurs

2 Executive Summary

The Crystal Palace Dinosaurs are a collection of 30 life-sized sculptures of dinosaurs, marine reptiles, mammals and other extinct animals, created by Benjamin Waterhouse Hawkins (1807–1894) in 1854. These sculptures are the first attempt in history to portray dinosaurs as full-scale, three-dimensional, living creatures and are located outdoors in Crystal Palace Park in southeast London. The sculptures are situated across a large set of islands with real and constructed geologic features, encouraging an understanding of changes through geologic Deep Time and also demonstrating the sources of Britain's industrial wealth in the 19th century. Although the reconstructions are often different from what we think of as 'correct' today, their very difference is a visible explanation on how science is an improving knowledge system based on new evidence and better interpretation. As the birthplace of 'Dinomania', they are a key monument in the history of science, and a much-loved London landmark with an international fan base. The statues are Grade I listed on Historic England's National Heritage List. In February 2020, Historic England added the Crystal Palace Dinosaurs to the Heritage at Risk Register, which is designed to identify sites that are most at risk of being lost as a result of neglect, decay or inappropriate development.

Friends of Crystal Palace Dinosaurs (FCPD) is a charity registered with the Charity Commission for England and Wales (no. 1165231) whose purpose is to promote the long-term conservation of these statues and the larger geological site. The charity does not own the sculptures, or control access to the site. Instead, FCPD keeps a close watch. We work with the custodians of the park, Bromley Council and the Crystal Palace Park Trust, other charities, and key national organisations such as Historic England to ensure the Dinosaurs get the care and attention they need. Our aim is to ensure the Dinosaurs survive our generation intact, so they can be enjoyed for future generations.

FCPD cares deeply about public engagement. Everyone loves the Dinosaurs, and the site is as alive to visitors today as when the park opened in 1854 as the first major experiential public outreach on science, "the first page in the book of popularising palaeontology". Friends of Crystal Palace Dinosaurs keep that spirit alive and develop engagement programmes, give public lectures, encourage visitors to do more than take a few quick photographs, and help children think about the importance of science in their daily lives. We particularly aim to provide resources that will encourage others to draw their own meaning from the site.

A key part of engagement relates to history and heritage. The Victorian story of these statues is one that fascinates all who encounter it. Yet there is much that still remains a mystery to historians. FCPD are working to unravel some of that narrative. More importantly, the Victorians weren't the only people to encounter the Dinosaurs. What about the rest of us? No walk through the site seems to go by without hearing stories and memories from visitors. Whether it's families on a picnic, dog walkers, couples relaxing, or grandparents sharing a

story from their youth, visits to the Dinosaurs form part of life for hundreds of thousands of people every year. FCPD works to capture some of those encounters so we can preserve them for the future.

The period from 1 April 2022 to 31 March 2023 has been immensely productive for the charity. We published a new book *The Art and Science of the Crystal Palace Dinosaurs* (5.2) sharing discoveries and research with both the general public and specialist audiences. Knowledge production - and sharing - is also underway with our partnership with King's College London (5.3) to use 'lesser known' aspects of the Crystal Palace Dinosaurs to engage the public with the deep past in new and distinct ways. Crowd-sourced information (5.6) is helping us to rebuild the *Palaeotherium magnum* sculpture (5.4), restoring a distinctive and engaging component of the Eocene mammal assemblage for all to enjoy.

After the disruption of the pandemic, we were able to return to a rich, full programme of public engagement. FCPD welcomed thousands of people to our events (5.9, 5.10), and brought the Dinosaurs to audiences with presentations in local schools and to care home residents, who may not be able to directly access local heritage sites.

Our years of *research*, *sharing* and *advocacy* has led FCPD to collaborate with Historic England's team of specialists to produce the most complete documentation of the site in modern records. We have also supported Bromley Council's National Lottery Heritage Fund Application to restore the heritage of the Crystal Palace Park. In March 2023, development funding was granted towards a proposed £5m regeneration budget, which would include funding to conserve the Crystal Palace Dinosaurs. We look forward to working closely with London Borough of Bromley, Crystal Palace Park Trust, Historic England and other partners to identify conservation priorities at the site, and secure the necessary funding to deliver high-quality restoration of the Geological Court and wider landscape.

FCPD is, as ever, grateful for the incredible support given to us by the public, science and heritage communities, local businesses and our partners and stakeholders. We are proud of this year's achievements, and look forward to what's possible in the year to come.

3 Reference and Administration Details

3.1 Charity Name & Registration

Friends of Crystal Palace Dinosaurs Registration number: 1165231

Friends of Crystal Palace Dinosaurs is a Charitable Incorporated Organisation, registered with the Charity Commission on 19 January 2016.

The charity is recognised by HM Revenue & Customs for Gift Aid.

3.2 Mission Statement

Friends of Crystal Palace Dinosaurs aims to:

- 1) Conserve the Dinosaurs and their surroundings for future generations.
- 2) Promote public knowledge and enjoyment of the Dinosaurs.
- 3) Research the history of the Dinosaurs and share it with the public.
- 4) Work with local, national and international stakeholders to achieve the above aims.
- 5) Raise funds to achieve the above aims.

Where 'Dinosaurs' denotes the sculptures, geological illustrations and surroundings.

3.3 Charity Contact Details

Address 88b Thicket Road, London, SE20 8DR

Email info@cpdinosaurs.org

Facebook facebook.com/cpdinosaurs

Instagram [@cpdinosaurs](https://www.instagram.com/cpdinosaurs)

Twitter [@cpdinosaurs](https://twitter.com/cpdinosaurs)

Website cpdinosaurs.org

3.4 Organisational Structure

Trustees

Name	Role	(Re)appointment date	Updates during reporting Period
Francesca Canty		Appointed July 2020	None
Dr Jennifer Crees		Reappointed May 2021	None
Prof. Adrian Lister		Reappointed August 2020	None
Dr A. Ellinor Michel	Chair	Reappointed July 2020	None
Sarah Slaughter		Reappointed January 2021	None
Alison K Smith		Appointed June 2019, Resigned June 2022, end of term	None
Dr Jeremy Young	Treasurer	Reappointed August 2020	Resigned as Treasurer Oct

			2022, remained trustee
Dr Sarah Watters	Treasurer	Appointed Oct 2022	None

All trustees are appointed/reappointed for a three-year term, with the exception of an initial four-year appointment of the Chair.

Management Board

The Management Board is intended to represent professional skills and knowledge from a diverse variety of backgrounds which fully support the charitable objects (4.2), including but not limited to: communications, conservation, corporate governance, creative arts, fundraising, history of science, horticulture, museum education, outreach, palaeontology and geology, policy, public sector administration, social media, and web development.

The Management Board, including trustees, meets a minimum of six times a year to coordinate projects and determine strategies for raising funds and awareness in line with the charitable objects. Board members rotate responsibility for the roles of facilitator and secretary. Board meetings take place every 4-6 weeks.

All trustees listed in 3.4.1 are members of the Management Board. The co-opted members of the Management Board during the reporting period were:

- Erica Brackenbury
- Anthony Lewis
- Charlotte Wightwick
- Jenny Carrington-Elson
- Lois Olmstead

Project Partners

Friends of Crystal Palace Dinosaurs trustees and Management Board are supported by additional advisory subject matter experts and professionals, many of whom help with practical tasks such as fundraising, arts engagement, administrative management, historic conservation, interpretation, design, landscape management, film making and project delivery. When advisors have committed to longer-term involvement with FCPD, but do not regularly attend board meetings, we refer to them as 'Project Partners'. They may lead on a project related to their skills, supported by the board. A list of current and previous project partners is available on our website¹.

Members of Staff

Friends of Crystal Palace Dinosaurs does not employ any permanent members of staff, and activity is almost wholly undertaken by volunteers.

Contractors

Contractors may be engaged for specific projects where a longer-term commitment, level of technical skill or knowledge is required which cannot be performed by volunteers.

3.5 Key Stakeholders

Due to the publicly owned status of Crystal Palace Park and the heritage assets within, Friends of Crystal Palace Dinosaurs work closely with multiple stakeholders.

Bromley London Borough Council (Bromley Council)

The legal custodians of Crystal Palace Park and the Crystal Palace Dinosaurs.

Crystal Palace Park Trust

On 15 September 2023, the Crystal Palace Park Trust became the park's custodian, taking over this responsibility from the London Borough of Bromley. The Trust was formed as part of the [Crystal Palace Regeneration Plan](#). In the 2022/23 year, the Trust began to take on organisation of some events and will become increasingly important to the future of the Dinosaurs. The Trust was incorporated as a Private Company Limited by Guarantee (company number: 11360503) in 2018 and received charitable status in England and Wales in 2021 (charity number: 1193331).

Historic England

An executive non-departmental public body providing support and guidance regarding the protection of heritage assets. The Crystal Palace Dinosaurs have been listed as Grade I on Historic England's National Register of Listed Buildings and were placed on the Heritage At Risk register in February 2020, making them the highest priority for conservation. Consideration is being given to give the site additional listing as a Scheduled Monument in addition to its Listed Buildings status. In 2022/23, Historic England initiated a special study project on the site to establish baseline condition data and set out a conservation and management plan for the future.

National Lottery Heritage Fund

The largest funder of UK heritage, National Lottery Heritage Fund invests money raised by the National Lottery across the UK. On 27 March 2023, they awarded Crystal Palace Park £304,000 development funding towards a proposed £5m regeneration budget, which has funding for conservation and interpretation of the Crystal Palace Dinosaur site as a headline, focal project.

King's College London (KCL)

King's College London is a public research university located in London, UK. It is one of England's oldest and most prestigious universities. Friends of Crystal Palace Dinosaurs has collaborated with KCL on the *Beyond the Dinosaurs* project, based in the Department of History.

idverde UK

Responsible for the management of the parks, green spaces and countryside service throughout the London Borough of Bromley. idverde are responsible for grounds maintenance, including waterways and vegetation, on the Geological Islands and rest of the park, a responsibility delegated by Bromley Council.

3.6 Informal Partnerships

Community Organisations

We have strong connections in Crystal Palace and Penge and often collaborate with local community organisations including:

- Crystal Palace Community Association
- Crystal Palace Foundation
- Crystal Palace Fun Runners
- Crystal Palace Museum
- Crystal Palace Overground Festival
- Crystal Palace Transition Town
- Friends of Crystal Palace Park
- Friends of Crystal Palace Subway
- Invisible Palace
- Penge Heritage Trail
- Penge Tourist Board
- Speaking Stones/Critical Moment Theatre Company

Museums, Education and Heritage

Our links with museums, education, and heritage outreach projects include:

- Capel Manor College
- City & Guilds Conservation Programme
- Emerald Ant Street Theatre & Education Company
- Lost Valley of London historic films
- Lyme Regis Fossil Festival
- The Natural History Museum, London
- University College London

3.7 Grantmaking and Funds

We do not give grants or invest funds.

3.8 Risk Assessment

Trustees Dr Jeremy Young and Dr Ellinor Michel have created a conservation risk report specifically focused on potential risks to the sculptures, with extensive baseline photographs taken by trustee Sarah Slaughter and project partner Rhys Griffin. The report includes mitigation strategies that can be adopted by Friends of Crystal Palace Dinosaurs and the key stakeholders.

4 Structure, Governance and Management

4.1 Type of Governance

Friends of Crystal Palace Dinosaurs is a Charitable Incorporated Organisation, managed by a board composed of the trustees (3.4.1) and co-opted members (3.4.2).

For issues of governance, the Management Board follows a foundation model where the only voting members are the charity trustees. Co-opted board members may partake in discussions but are not eligible to vote.

When relevant, a trustee must declare any potential conflict of interest and may be requested by the board to absent themselves from any related discussion or vote.

A motion will be considered passed should it gain a majority of votes. In the event of an equal number of votes, the casting vote belongs to the Chair.

The quorum is two charity trustees, or the number nearest to one third of the total number of charity trustees, whichever is greater.

4.2 Charitable Objects

The objects of Friends of Crystal Palace Dinosaurs are:

- 1) The preservation and conservation of the Crystal Palace Dinosaurs, including the palaeontological statues, geological displays and related landscaping, for the public

benefit.

- 2) The advancement of education for the public benefit in the subjects of the Crystal Palace Dinosaurs, palaeontology, biology, archaeology, history and local or national heritage and to promote science in connection with any or all of these subjects.

In the above objects the Crystal Palace Dinosaurs are a collection of over 30 statues and geological tableaux created by Benjamin Waterhouse Hawkins (1807–1894).

4.3 Trustees

Function and Duties of Charity Trustees

The charity trustees shall manage the affairs of the Friends of Crystal Palace Dinosaurs and may for that purpose exercise all the powers of the FCPD. It is the duty of each charity trustee:

- a) To preserve and conserve the Crystal Palace Dinosaurs, including the palaeontological statues, geological displays and related landscaping, for the public benefit.
- b) To exercise [their] powers and to perform [their] functions in [their] capacity as a trustee of the FCPD in the way [they decide] in good faith would be most likely to further the purposes of the FCPD.
- c) To exercise, in the performance of those functions, such care and skill as is reasonable in the circumstances in particular to:
 - i. any special knowledge or experience that [they have] or [hold themselves] out as having.
 - ii. if [they act] as a charity trustee of the FCPD in the course of a business or profession, any special knowledge or experience that it is reasonable to expect of a person acting in the course of that kind of business or profession.

Trustee Selection Methods

Every trustee must be appointed or reappointed for a term of three years by a resolution passed at a properly convened meeting of the charity trustees.

In selecting individuals for appointment as charity Trustees, the charity trustees must have regard to the skills, knowledge and experience needed for the effective administration of Friends of Crystal Palace Dinosaurs in accordance with charity law.

The charity trustees will make available to each new charity trustee, on or before [their] first appointment:

- a) A copy of the current version of the constitution.
- b) a copy of the FCPD's latest Trustees' Annual Report and statement of accounts.

Trustee Induction

Trustee induction includes:

- a site visit
- review of past accomplishments, and future goals
- key governance documents
- a commitment to read CC3: 'The essential trustee: what you need to know, what you need to do'

Trustee Eligibility

- a) Every charity trustee must be a natural person.
- b) No individual may be appointed as a charity trustee of Friends of Crystal Palace Dinosaurs:
 - i. if [they are] under the age of 16 years.
 - ii. if [they] would automatically cease to hold office under the provisions of clause 12.1.3 [disqualified from acting as a charity trustee by virtue of sections 178-180 of the Charities Act 2011 or any statutory re-enactment or modification of that provision].
- I. no one is entitled to act as a charity trustee whether on appointment or on any reappointment until [they have] expressly acknowledged, in whatever way the charity trustees decide, [their] acceptance of the office of charity trustee.
- I. At least one of the trustees of the FCPD must be 18 years of age or over. If there is no trustee aged at least 18 years, the remaining trustees may only act to call a meeting of the charity trustees or appoint a new charity trustee.

4.4 Meetings

During the reporting period FCPD had six board meetings. We also had one

facilitator-led strategy day, funded by the Ministry of Housing, Communities & Local Government as part of the Pocket Parks grant for the Bridge Project. Trustees also engaged in numerous meetings with stakeholders, project partners and volunteers.

5 Activities, Achievements and Performance

5.1 Statutory Declaration

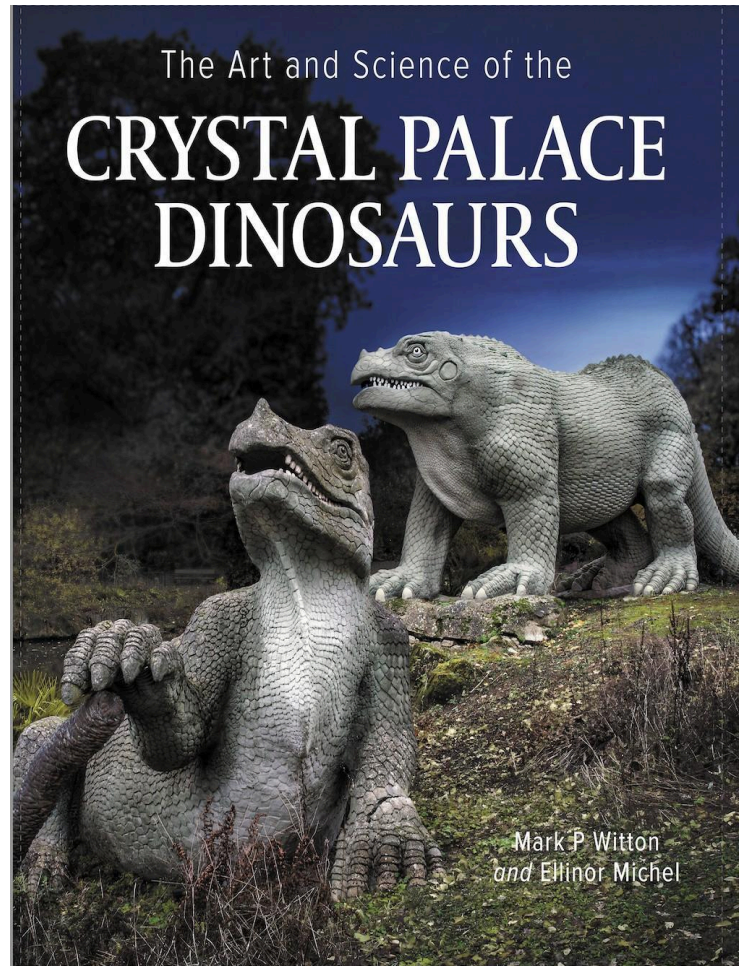
The trustees confirm that they have paid due regard to the guidance issued by the Charity Commission on public benefit in deciding what activities the charity should undertake.

5.2 *The Art and Science of the Crystal Palace Dinosaurs*

Friends of Crystal Palace Dinosaurs announced the publication of our new book *The Art and Science of the Crystal Palace Dinosaurs*. The book is the most detailed treatment ever undertaken on the site, with extensive new archival work and many colour illustrations. It significantly updates and expands on the previous shorter, black and white publication from 1994 with numerous changes to the received narratives about the site. This includes a significant change in recognition of the main creative force behind the site, giving Benjamin Waterhouse Hawkins his due credit and presenting evidence of the minimal input from Richard Owen. The book notes newly-discovered records of seven missing sculptures and outlines the unorthodox materials and construction of the sculptures, which is essential for future conservation and maintenance.

The book has served as the key resource for many subsequent projects, from local engagement such as Speaking Stones, to new children's books and our Beyond the Dinosaurs project. *The Art and Science of the Crystal Palace Dinosaurs* was a foundation for the Historic England Crystal Palace Dinosaurs Research Project, resulting professional conservation surveys, and Bromley Council's National Lottery Heritage Fund grant application.

The Art and Science of the Crystal Palace Dinosaurs is researched and written by Dr Mark Witton, a palaeontologist and palaeoartist affiliated with the University of Portsmouth; and Dr Ellinor Michel, the Chair of FCPD and an evolutionary biologist, ecologist and taxonomist at the Natural History Museum, London.



Cover. Published June 2022 by The Crowood Press

The book launched on 14 June with a fully booked event at Crystal Palace Park as part of the local Penge Festival. Talks and events by the authors about the book have continued throughout the year, including at the Natural History Museum, Lyme Regis Fossil Festival, Bookseller Crow shop, TetZooCon at King's College London, London Fortean Society and the international professional seminar Popularising Paleontology. Mark Witton also produced a 30-minute video introducing the book and its new research insights, which was shared on the FCPD website.



The Art and Science of the Crystal Palace Dinosaurs events: Bookseller Crow in Crystal Palace, the Natural History Museum, South Kensington, London.

The Art and Science of the Crystal Palace Dinosaurs has been widely reviewed in a range of media, including *New Scientist*, *Proceedings of the Geologists' Association*, *ICON Magazine* and by *Dino Dad Reviews*, Museum of London Senior Archaeologist David Sankey, and *The Inquisitive Biologist*. It has been distributed in the UK and USA and is available for purchase through numerous online outlets, bookstores, events and in Crystal Palace Park at the Information Centre.

5.3 Beyond the Dinosaurs

Beyond the Dinosaurs is a collaborative outreach project between King's College London (KCL) and the Friends of Crystal Palace Dinosaurs. This year, we have continued working with Chris Manias at KCL (Senior Lecturer in the History of Science & Technology), a specialist in the Victorian understanding of fossil mammals. Led by Dr Manias, the *Beyond the Dinosaurs* team of FCPD trustees and project partners includes Jennifer Crees, Adrian Lister, Susannah Lydon, Ellinor Michel, Ruth Siddall, Lil Stevens, Jon Todd, Mark Witton, and Jeremy Young. Together, they are creating resources to engage the public with the deep past in new and distinct ways – and to share some of the lesser-known features of the Crystal Palace Geological Court.

The project is in response to discussion of the Crystal Palace Dinosaurs often focusing on the sculptures of the dinosaurs and other fossil reptiles, while other elements of the site are frequently overlooked. This includes the sculptures of extinct mammals on Tertiary and Quaternary islands, the Geological Illustrations (the models of rock layers on and around the islands) and the Palaeo Planting volunteer project. *Beyond the Dinosaurs* is producing three fold-out guides to be distributed free to visitors to the park and at other events, available to download online, plus three audio guides, a two-day specialist workshop, a pop-up exhibition at KCL and a public event.

As part of *Beyond the Dinosaurs*, we surveyed the public to provide a baseline understanding of their knowledge of and interest in the Crystal Palace Dinosaurs. Data was collected online and in the park itself to capture the views of both visitors to the park and enthusiasts from further afield. We received approximately 180 responses, revealing that most people felt they knew a lot about the dinosaur and other prehistoric reptile sculptures, but relatively little about the mammals, geological illustrations and palaeo planting aspects of the site. Respondents were interested in learning more about how the sculptures could teach us more about biodiversity change and extinction, the scientific process and history. They were interested in learning through dynamic formats like audio guides and illustrated guide sheets. Overall, the survey revealed that people value many different aspects of the Crystal Palace Dinosaurs: aesthetics/artistic impact, the fun of the site, history, palaeontology and natural history, and the story of science.

The launch of *Beyond the Dinosaurs* will take place on 2 July 2023.

5.4 *Palaeotherium magnum* Research and Rebuild

FPCPD embarked on an exciting new project to restore one of the park's important missing sculptures. While there are 30+ sculptures as part of the Crystal Palace Dinosaurs today, seven more were created but have been lost. Through extensive research we discovered valuable archival records for a missing sculpture from the *Palaeotherium* assemblage.

Palaeotherium magnum was a large (2.2m long) extinct mammal distantly related to horses. It was a distinctive and engaging component of the Eocene mammal assemblage in the park but its sculpture apparently went missing in the middle of the twentieth century. It appears several times in etchings and paintings of Hawkins' workshop and in photos of the original site build in the early 1850s. More recent images of it from 1958 and 1962/63 have now been uncovered through historical archives and our crowd-sourced photo archiving project *Dinosaur Monitor*.



One of the last-known images of the *Palaeotherium magnum*, from 1963

FPCPD developed the project to restore the sculpture by Britain's leading paleoartist, Bob Nicholls, with support from Mark Witton and approval of Historic England and London Borough of Bromley. Funding is from the Crystal Palace Park Trust and FPCPD. This project is the first attempt to replace a lost sculpture at the site in 20 years and will be unveiled to the public on 2 July 2023 at a special event.

We will also produce a short film *How Palaeotherium magnum came back home to the Crystal Palace Dinosaurs* to share the journey of reviving the sculpture, from designing and building it through to transporting it to the site and final placement – where the original sculpture stood for more than 110 years.

5.5 Conservation

Irish Elk (*Megaloceros*)

In May 2020, the antlers of one of the Irish Elk (*Megaloceros*) collapsed. We have advocated for restoration of the sculpture since the incident with a proposal to Bromley, which resulted in commissioning a condition survey and costings in May 2022. Works are pending as the required funding is being sought. To prevent further damage to the antlers, these were removed by the surveying conservators and stored in the Information Centre for safe keeping.



Irish Elk (*Megaloceros*) stag damaged in May 2020.

© Friends of Crystal Palace Dinosaurs

Specialist Assessment/Condition Survey

In 2022 the FCPD produced an extensive Specialist Assessment/Condition Survey document, as requested by Historic England and London Borough of Bromley. This was led by Dr Jeremy Young, edited by Ellinor Michel, with photography by Sarah Slaughter and a specialist site visit from conservators Teresa Heady and Mike Wheeler.

***Hylaeosaurus* Head**

In mid-2022, repairs were made around the protective area of the head of the *Hylaeosaurus* sculpture. The gaps in the brick ring were repaired and gravel was slated to be replaced with woodchip to help prevent inadvertent erosion and vandalism from pebble-throwing. This sculpture is signed with its 1854 construction date by the artist - the only original work that is fully accessible to the public. It is commonly used as a seat or play structure as its heritage status is unremarked and undervalued.

Unauthorised Access Prevention and Bank Stabilisation

In partnership with the volunteering organisation Trees for Cities, FCPD, Oscar Thompson (from Trees for Cities) and Gemma Woodfall (Crystal Palace Park Trust) put in £500 of whips around both weir heads on the site with 20 corporate volunteers. The plants form spikey barriers that will conceal the weir heads from view and are a deterrent to trespassers, making it clear the weirs are not legitimate access points. On 22 June, further work was done by the same team with hessian sacking and planting to stabilise some of the banks around the Dinosaur Landscapes.

***Paleotherium minus* head restoration**

While working on the *Palaeotherium magnum*, FCPD approved additional funds up to £5,000 for Dr Bob Nicholls to create a replacement head for the badly damaged *Palaeotherium minus* sculpture. Work is planned to begin in 2024.

Ichthyosaur repairs

In 2020 the snout of one of the recently conserved *Ichthyosaurus platyodon* (sculpture number 11) was inadvertently broken by the idverde grounds team. In response to FCPD's advocacy, repairs to the sculpture were done in 2022 by conservators Taylor Pearce Ltd: reattachment of broken snout (paid for by idverde) and body maintenance including crack filling and repainting (paid for by London Borough of Bromley).



The damaged ichthyosaur

5.6 Dinosaur Monitor



Dinosaur Monitor is an extension of Monument Monitor, a citizen science photo archiving project developed by Rosie Bringham for her PhD, supervised by Josep Grau-Bové from the University College London Institute of Sustainable Heritage. FCPD trustee Jennifer Crees collaborated in development and monitored the database, as well as writing its online presentation on the FCPD website.

The project uses visitor images as a source of data for monitoring historic monuments. The initial web architecture was developed with backing from Heritage Environment Scotland to monitor relatively remote sites in Scotland. In 2021 the project was extended to include the Crystal Palace Dinosaurs, with FCPD funding basic costs.

During 2022/23 images were submitted by the public, and technical work was undertaken to maintain the database. Around 1000 images have been submitted so far. Images submitted through the project were vital for the research and rebuild of *Palaeotherium magnum*, highlighted previously unknown historical damage to the standing Iguanodon, and have contributed to the research done by Historic England and fed into the London Borough of Bromley National Lottery Fund Application.

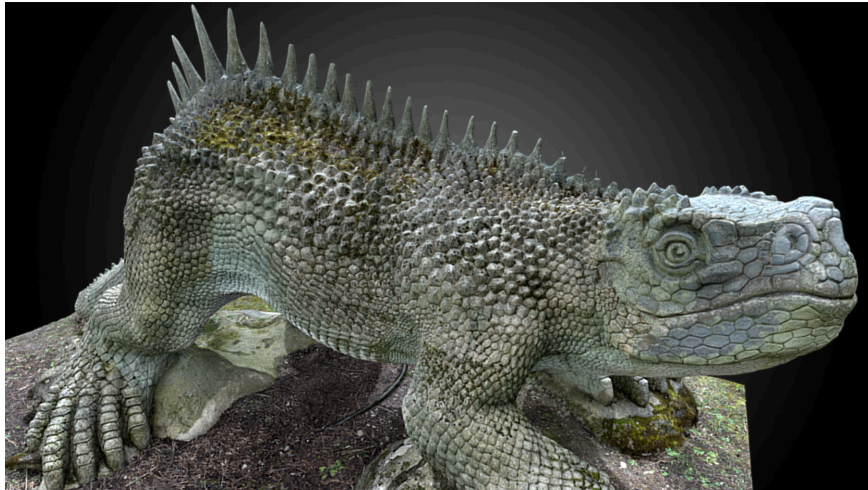
5.7 Digital Dinosaur Archive: 3D Scans of the Sculptures

Since 2018, Rhys Griffin (digital professional and animator) and Anthony Lewis (film maker and FCPD board member) have volunteered their skills to produce 3D scans of the sculptures. This has allowed us to establish ultra-high resolution archival images for the ten largest sculptures on the islands for future conservation and condition monitoring.



3D scanning at the Crystal Palace Dinosaurs

The FCPD digital assets were shared with Historic England this year, as part of our support of their extensive site report and public outreach. We partnered with the Historic England Geospatial Survey Team, who had scanned the remaining original animal sculptures, towards a goal of presenting digital 3D models on SketchFab for the public to explore - allowing a wide audience to get up close with all 29 of the original sculptures. Our scans have also provided the time-specific baseline for monitoring condition changes through time and the images served for mapping conservation issues in the condition surveys done by Sally Strachey Historic Conservation as part of the work preparing for the National Lottery Heritage Fund grant.



3D Scan of Hylaeosaurus in SketchFab

The Historic England Geospatial team used white light scanning to image the head of *Palaeotherium minor/medium* that was rescued from the lakes by FCPD in 2014 and stored since. Rhys Griffin, from FCPD, expanded his skills base by collaborating with Historic England.

5.8 Reviving Lost Worlds: A Community Palaeo Planting Project



Through this ongoing project, Friends of Crystal Palace Dinosaurs aims to organise hands-on planting work with a team of volunteers on the Dinosaur Islands, contributing to long-term maintenance of the site and expanding the narrative on environmental changes through geological time. In the past, volunteers have taken part in planning, clearing and planting historically and scientifically appropriate plants, following guidance by a horticulturist who is realising advice from a paleobotanist for recreating living analogues for environments in deep geological time. It is a popular project, enabling people to make a visible contribution to the site, learn new skills and to share an enriched social experience doing something very special.

Due to constraints on access to the sculptures, we were unable to organize volunteer sessions on the Dinosaur Islands for our Palaeo Planting Project. However, the collaboration with Trees for Cities was informed by our palaeo plant designs. We also received a donation of a large Monkey Puzzle tree, which FCPD arranged to be planted by the café in April 2022 by the London Borough of Bromley tree team.

5.9 Dinosaur Days: Heritage Open Days/London Open House

FCPD held our latest Dinosaur Days on 10-11 September, as part of the national Heritage Open Days and London Open House. This is the sixth year we have taken part in HOD, “England’s largest festival of history and culture”, giving people of all ages, backgrounds and interests an introduction to the Crystal Palace Dinosaurs. The headline event was the *How To Train Your Dinosaur* show - an interactive, audience participation performance. At least 900 people attended the three performances.



How to Train Your Dinosaur Performance

Further highlights include:

- More than 100 people attended FCPD’s heritage walks.
- Special tours related to the *Beyond the Dinosaurs* project with King’s College London, and a game of Missing Mammals created by local artist David Vallade. 50+ people joined in, scouring the site for pictures of mammal sculptures that were planned, but never created as part of the Crystal Palace Dinosaurs.
- FCPD volunteers assisted 250 people at the Info Centre, answering questions about the dinosaurs.

- 280 children and adults took part in our Dino Crafts, including guided drawing sessions with artist and geologist Emma Jude.
- Rhys Griffin demonstrated high resolution 3D scanning of the Dinosaurs.
- The local Palace A Capella choir performed songs from the *Speaking Stones* project to more than 70 people.
- A bespoke tour for architecture students from Syracuse University, NY, USA.



Beyond the Dinosaurs guided tour

5.10 Public Engagement

In addition to events and launches related to specific FCPD projects, this year we continued to offer a rich programme of in-person, public engagement for a wide variety of audiences. We achieved this through events at the park, visits to local schools, lectures by experts on subjects related to the Dinosaurs, and attendance at external events and festivals. Highlights included:

- Free talks and guided tours for local schools, reaching nearly 250 KS1 and KS2 pupils.
- A Heritage Walk for St Christophers' Hospice, catering to people who may be bereaved or isolated.
- A stand at the Lyme Regis Fossil Festival, directly engaging with 356 attendees.
- Our information stand at Crystal Palace Park provided information about the Dinosaurs to hundreds of park visitors.
- Stands at community festivals and events including Paws in the Park, South Norwood Community Festival, Gipsy Hill Fete, Penge Festival Fete and South Facing Festival.
- Volunteer-led Heritage Walks.

- A presentation about the Crystal Palace Dinosaurs to residents at Clairleigh Care Home.
- A steampunk tour.
- Two sessions at the Crystal Palace Park Trust Summer of Play.
- Seeing Two Ways: 'Life' drawing the CP Dinosaurs.



'Life drawing' event led by project partners Emma Jude, artist and geologist, and Rhys Griffin, digital animator, who has produced 3D assets using photogrammetry.

Events were facilitated by volunteers, coordinated by FCPD trustees Sarah Slaughter and Ellinor Michel.

6 Support for External Projects

The Friends of Crystal Palace Dinosaurs regularly contributed research, expertise, advice and data for external projects and research by a range of stakeholders.

6.1 Support of Historic England's Crystal Palace Dinosaurs Research Project

In 2021 Historic England convened approximately 20 of its specialists to develop a complete

evidence base on the history, condition and conservation and maintenance needs of the Crystal Palace Dinosaurs. They have undertaken critical data collection in topics such as document archiving, 3D scanning and material mapping, structural engineering, landscape management, hydrology, archaeology and museology. This is an exceptional project, as it is rare for Historic England to invest such extensive professional time in a specific site, as the London and South East section alone oversees approximately 600 sites.

The final report will be published in 2024, and will be the most complete documentation of the site ever created in modern records. This builds on the work of the Friends of Crystal Palace Dinosaurs and is fully collaborative, including many meetings and open data exchange.

6.2 Support of 'Restoring the Heritage of the Iconic Crystal Palace Park for All' National Lottery Heritage Fund Application

On 27 March 2023, The National Lottery Heritage Fund awarded Crystal Palace Park £304,000 development funding towards a proposed £5m regeneration budget, which would include funding for conservation and interpretation of the Crystal Palace Dinosaur site. The application was informed by the work undertaken by Historic England and FCPD's research and advocacy. We will continue to advocate for the conservation and maintenance of the Dinosaurs as the award goes forward.

The announcement of the award and the funding for the Dinosaurs received wide press coverage including *BBC News*, *The Times*, and the *Evening Standard*.

6.3 Speaking Stones

Speaking Stones is an innovative project by Critical Moment Theatre, working with local communities to give their local art a voice. In early 2021 they secured funding from the Mayor of London's Office to produce a series of short audio works based on the public art around Crystal Palace and Penge. With input from the FCPD, they [launched six musical videos about the Crystal Palace Dinosaurs](#), performed by a 'Dinochorus' starring local choir Palace Acapella. The Youtube videos have received hundreds of views, and a live launch took place on 2 April 2022.

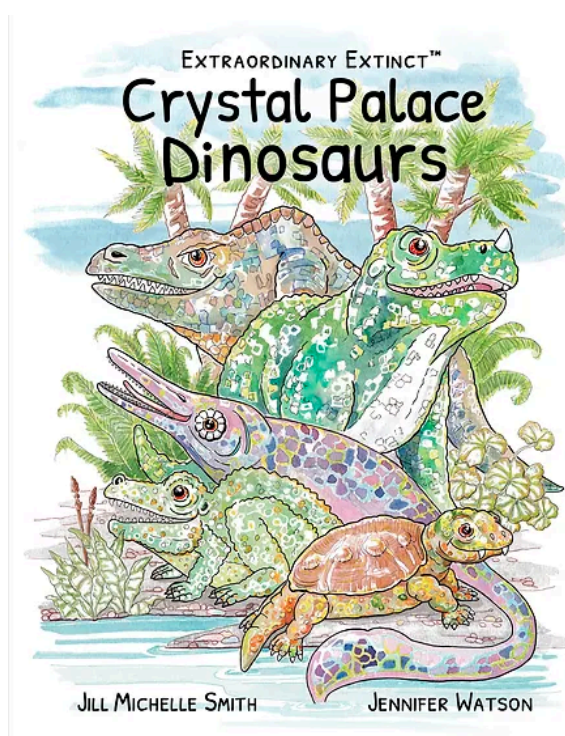


Speaking Stones launch event and performance

6.4 ***Extraordinary Extinct: The Crystal Palace Dinosaurs book***

FCPD supported family-run design studio Dodo and Dinosaur on the newest book in their *Extraordinary Extinct* series. Recommended for KS1 and KS2, the book will introduce Crystal Palace Dinosaurs to young readers for the first time. FCPD provided details on content and editorial input.

Extraordinary Extinct: The Crystal Palace Dinosaurs will be published in 2023, and £1 from every book sold will be donated to the Friends of Crystal Palace Dinosaurs.

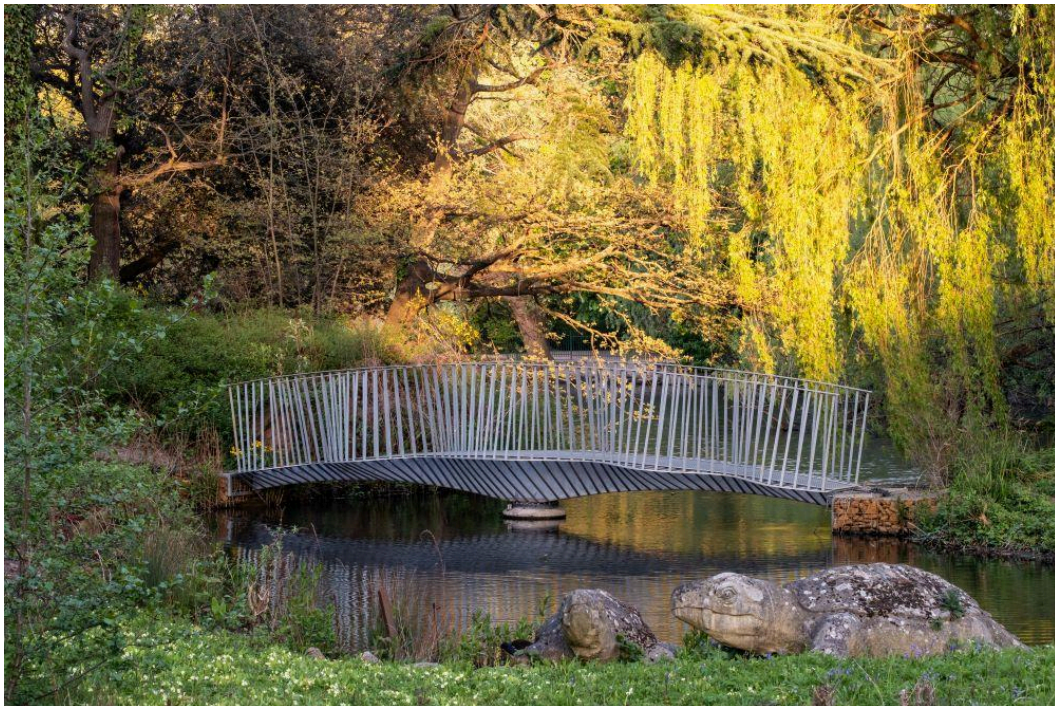


7. Awards

7.1 Dinosaur Bridge RIBA Nominations

Safe, secure access to the Crystal Palace Dinosaurs is vital for conservation monitoring, repair of the sculptures and grounds maintenance to protect this magnificent Grade-1 listed historic site. In November 2019, Friends of Crystal Palace Dinosaurs received unanimous approval from Bromley Council, with agreement from Historic England, for the construction of a new swing bridge to the islands, which opened on 13 January 2021. Since completion, the bridge has won a number of notable engineering and architectural awards and many press mentions

This year, the bridge was nominated for prestigious RIBA awards (Royal Institute of British Architects), both the National Award and the London Award. Results will be announced in June 2023.



Dinosaur Swing Bridge, designed by Tonkin Liu

8. Communications

8.1 Website, Newsletter and Social Media

FCPD continued to have an active presence online; on social media with a regular presence on Facebook, Instagram and Twitter; and through our email newsletter.

Website

- 105,728 page views.
- 45,188 users.
- Most visited webpage was our Visitor's Guide page with 26,003 pageviews.
- Our most viewed blog post was about Dino Days, with 2694 pageviews (<https://cpdinosaurs.org/blog/post/dino-days-2022> 25 August 2022)

Newsletter

FCPD continued to send our email newsletter, which grew to 500+ subscribers. The newsletter shares the charity's activities, events and updates on the Dinosaurs.

Social media

- Twitter: 8,159 followers.
- Instagram: 4,952 followers.
- Facebook: 6,190 followers.

9. How the Public has Benefitted

The work of FCPD helps to promote the Dinosaurs and Crystal Palace Park as a significant recreation, tourism and education destination in London. The Crystal Palace Dinosaurs have long provided a free attraction for schools and families and encouraged use of the park's green spaces. Due to the impact of the cost-of-living crisis, this need remains acute as many families living in the area lack green space at home. The area around the park has a greater number of Black, Asian and minority ethnic residents, with greater deprivation and high unemployment than most of Bromley, giving a positive impact upon green space for those who disproportionately live within an area of deficiency.

The park is noted as a national attraction in Bromley's Open Spaces Strategy with a unique heritage, archaeological and historical environment. The Open Spaces Strategy has been developed to maximise the biodiversity, climatic, ecological, environmental, health, social and wellbeing benefits for residents and communities, as well as making its open spaces feel like 'destinations'. The Dinosaurs are a headline attraction, not only conveying their own rich environmental, scientific and historic narrative, but also acting as a draw that results in additional time and uses of the park by visitors. People come for 'the roar', and stay for more.

The Dinosaurs can be seen to positively impact the local economy. Visitors to the park can use the opportunity to visit the park café, Brown & Green Life, in addition to exploring Penge and the Crystal Palace Triangle and its variety of independent shops and hospitality venues. An array of local artists and designers have been inspired to create and deliver products

relating to the sculptures, donating a proportion of profits to the charity and in turn supporting growth of community networks.

The park holds a strategic location on both the Capital Ring and Green Chain 'Walk London' routes and contributes to the diverse portfolio of open spaces in Bromley and London. When possible, the Crystal Palace Park Information Centre, run by volunteers with our partner organisation, Friends of Crystal Palace Park (FoCPP), was open for visitors to learn more about the story of the Dinosaurs and the history of the park.

Dinosaurs inspire at all ages, and we have a public programme reaching people from school ages to adults. FCPD has introduced hundreds of local children to the site through school visits and presentations, ensuring that the core message of science history reaches the next generation. In our publication of *The Art and Science of the Crystal Palace Dinosaurs*, knowledge is both produced and shared about one of London's most important public sites related to the history of science, and made available for both specialist and general audiences. Our conservation work, support of Historic England's research project and Bromley Council's National Lottery Heritage Fund application, and the rebuilding of *Palaeotherium magnum* help to ensure the dinosaurs remain a visual learning experience for the public now and into the future.

10. Financial Review

10.1 Explanation of Accounts

The accounts are presented in terms of income received and expenditure undertaken over the 12-month reporting period. They thus represent a summary of the actual assets held by the society. The accounts are presented to allow identification of expenditure of key projects run through the year and to allow direct comparison with previous years, the income and expenditure items for the year are grouped by project where relevant. In addition, at the end of the accounts a statement is made of the balance of funds for each project. From this a summary is made of the uncommitted assets of the society.

The externally funded project that FCPD was committed to during the reporting period was the Palaeo Planting Project - a project to reinstate scientifically appropriate vegetation around the Dinosaur sculptures and to deliver a complementary programme of public lectures. The project is funded primarily by LBB with an additional grant from the Stanley Smith Horticultural Trust. Owing primarily to access restrictions to the site this project was in abeyance through most of the year and so expenditure was minimal, but the balance of funds was carried over for use subsequently and is identified separately in the assets of the society.

The general activities of FCPD include running the website, trustee meetings, production

and sale of publicity items, participation in public events, and research activities. We do not have a formal membership scheme but are well-supported by the public, especially locally, through donations and purchase of promotional items. Trustee meetings continued to be held online and so incurred minimal cost. Some costs were incurred to reimburse the costs of volunteers who give their time to support FCPD activities.

Donations from the public continued at a satisfactory level for the level of activity, reflecting the continuing public interest in the sculptures and awareness of the urgent need for their conservation and maintenance. Donations included both numerous small donations and one donation >£1,000. Total donations were £5,276.48.

Trading primarily consisted of sales of FCPD t-shirts; the Witton & Michel book on the Dinosaur statues and Geological Court; and the Benton & Nicholls book on dinosaur palaeobiology. This yielded a surplus for the year of ca. £1,800 (the accounts surplus is £1,476 but this is misleadingly precise since it does not include change in stock levels).

Overall, the accounts show a net surplus of £3,940.82. This surplus reflects continuing reduced expenditure due to the cessation of various activities related to the Palaeo Planting grounds maintenance/volunteer engagement; pending renegotiation of the access agreement with Bromley Council (custodians of the sculptures) and with the Crystal Palace Trust (to whom Bromley council is transferring running of the park). As a result of the surplus our reserves increased to £39,009.65. This level of reserves constitutes a useful resource and will allow us increasingly to: (1) Fund small projects ourselves; (2) Contribute to larger projects, especially where matched-funding can leverage larger grants; and (3) Undertake projects which are funded retrospectively. The trustees consider it is prudent to maintain reserves of ca £15-25,000 in order to enable us to undertake grant-funded projects. Our reserves now exceed this, so we now are in the position to fund small scale projects up to about £5,000-10,000 ourselves. One such project is detailed in 5.4 above where the trustees have agreed to fund up to £5,000 for the *Palaeotherium minus* head restoration work being undertaken by Dr Bob Nicholls, which will start in 2024.

The trustees have reviewed in detail the proposed redevelopment plans for the statues, prepared by LBB and the CPPT, and are of the opinion that the FCPD will need to provide additional funding to that venture to undertake small projects in line with the FCPD's stated aims.

Accounts prepared by: Stefan Bort, FCPD Treasurer, January 2024.

Accounts checked and verified by: Jonathan Clough.

10.2 Remuneration

All Trustees act in a voluntary capacity and receive no remuneration or other material benefits from their services to the Charity. Out-of-pocket expenses necessarily and

reasonably incurred by Trustees and volunteers in promoting the purposes of the Charity are reimbursed at cost.

10.3 Financial Status

The charity's current resources from restricted and unrestricted donations are sufficient to meet its outgoings for at least next year. All the indications are that this will remain the case for the foreseeable future.

10.4 Details of Any Funds Materially in Deficit

The Charity has no funds which are materially in deficit.

11 Statement of Financial Activity 2022/23

11.1 Declaration

The financial statements have been prepared in accordance with the Charities Act 2011 Section 133.

11.2 Accounts for Financial Year 2022/23

FRIENDS OF CRYSTAL PALACE DINOSAURS - ACCOUNTS FOR FINANCIAL YEAR 2022-23			
	income	expenditure	net change
Opening balance (from 2020-21 accounts)			
Uncommitted funds	£31,823.28		
Funds held for Palaeo Planting Project	£3,245.55		
Total	£35,068.83		
General activities			
INCOME			
Donations: (via Charities Aid Foundation)	£100.21		
Donations (via bank)	£2,218.64		
Donations: (via website/paypal)	£2,957.63		
Partner sales			
EXPENDITURE			

Friends of Crystal Palace Dinosaurs (1165231): Trustees' Annual Report and Financial Statements

Public events		£305.19	
Trustee expenses		£242.70	
General activities		£710.38	
Zoom costs		£143.88	
PayPal fees		£89.54	
Bridge project - review		£600.00	
Costs paid in prior financial year		£518.00	
Refund		£25.25	
Volunteer costs		£176.94	
	£5,276.48	£2,811.88	
Sale of promotional items			
Sales of books, t-shirts etc.	£8,442.92		
Purchase of books and associated items		£4,720.90	
Purchase of t-shirts and associated items		£2,195.80	
General sales expenses		£50.00	
	£8,442.92	£6,966.70	
Total income/expenditure	£13,719.40	£9,778.58	£3,940.82
Surplus	£3,940.82		
Closing balance	£39,009.65		

11.3 Statement of Assets and Liabilities

Statement of Assets & Liabilities	
Actual Bank balances on 31st March 2023	
TSB Account	£35,901.76
PayPal Account	£3,107.89
	£39,009.65

11.4 Designated or Restricted Funds

Funds which are committed to particular projects	
Funds held for the Palaeo Planting Project	£3,245.55
Uncommitted funds	£35,764.10
Change in uncommitted funds over the year	£3,940.82

12 Independent Examiners Report on the Accounts

Attached on the pages below.



**CHARITY COMMISSION
FOR ENGLAND AND WALES**

**Independent examiner's report
on the accounts**

Section A

Independent Examiner's Report

**Report to the trustees/
members of**

FRIENDS OF CRYSTAL PALACE DINOSAURS

**On accounts for the year
ended**

31 MARCH 2023

**Charity no
(if any)**

1165231

Set out on pages

32, 33, 34.

I report to the trustees on my examination of the accounts of the above charity ("the Trust") for the year ended 31/03/2023

**Responsibilities and
basis of report**

As the charity trustees, you are responsible for the preparation of the accounts in accordance with the Charities Act 2011 ("the Act").

I report in respect of my examination of the Trust's accounts carried out under section 145 of the 2011 Act and in carrying out my examination, I have followed all the applicable Directions given by the Charity Commission under section 145(5)(b) of the Act.

**Independent
examiner's statement**

~~The charity's gross income exceeded £250,000 and I am qualified to undertake the examination by being a qualified member of [insert name of applicable listed body]. Delete [] if not applicable.~~

I have completed my examination. I confirm that no material matters have come to my attention (other than that disclosed below *) in connection with the examination which gives me cause to believe that in, any material respect,:

- the accounting records were not kept in accordance with section 130 of the Act; or
- the accounts did not accord with the accounting records; or
- the accounts did not comply with the applicable requirements concerning the form and content of accounts set out in the Charities (Accounts and Reports) Regulations 2008 other than any requirement that the accounts give a 'true and fair' view which is not a matter considered as part of an independent examination.

I have no concerns and have come across no other matters in connection with the examination to which attention should be drawn in this report in order to enable a proper understanding of the accounts to be reached.

* Please delete the words in the brackets if they do not apply.

Signed:

Jonathan Clough

Date:

28/1/2024

Name:

JONATHAN CLOUGH

**Relevant professional
qualification(s) or body
(if any):**

C. ENG (MIET)

Address:

11 FRASER ROAD
CAMBRIDGE
CB4 1LJ

Section B

Disclosure

Only complete if the examiner needs to highlight matters of concern (see CC32, Independent examination of charity accounts: directions and guidance for examiners).

Give here details of any items that the examiner wishes to disclose.

Empty space for disclosure details
