

CAMPAIGN TO PROTECT RURAL ENGLAND, HAMPSHIRE BRANCH

England & Wales · Charity number 1164410

Details

Other names	CPRE HAMPSHIRE
Status	Registered
Legal form	CIO
Registered	2015-11-16
Register	View on the Charity Commission register

Contact

Address	Cpre Hampshire C/O Sparsholt College Westley Lane Sparsholt SO21 2NF
Phone	01962797312
Email	opsmanager@cprehampshire.org.uk
Website	http://www.cprehampshire.org.uk/

Activities

Objects: THE OBJECTS OF THE CIO ARE TO PROMOTE AND ENCOURAGE FOR THE BENEFIT OF THE PUBLIC THE IMPROVEMENT, PROTECTION AND PRESERVATION OF THE COUNTRYSIDE OF HAMPSHIRE AND ITS TOWNS AND VILLAGES, AND THE BETTER DEVELOPMENT OF THE RURAL ENVIRONMENT.

Activities: CPRE Hampshire fights for a better future for the countryside. It works county wide and locally to protect, shape and enhance the beautiful, thriving countryside for everyone to value and enjoy. It campaigns on countryside issues, engages locally and strategically, responds to planning applications which effect the countryside and influences local authorities and bodies.

Classification

- **How:** Provides Advocacy/advice/information, Sponsors Or Undertakes Research
- **What:** Environment/conservation/heritage
- **Who:** The General Public/mankind

Geography

- Hampshire

Finances

Period end	Income	Expenditure	Assets	Employees
2025-12-31	£224,288	£213,135	-	-
2024-12-31	£199,189	£193,765	-	-
2023-12-31	£129,333	£129,475	-	-
2022-12-31	£71,471	£62,638	-	-
2021-12-31	£99,994	£91,036	-	-
2020-12-31	£86,782	£81,575	-	-

Trustees

Name	Role	Appointed
Margaret Ann Paren	Chair	2022-04-23
Benjamin Edward Goodall		2024-04-20
Carole Melanie Oldham		2020-09-12
David Arthur Rigby		2024-04-20
Elizabeth Mary Michel		2021-01-13
Neil John Henderson		2021-01-13
William Boyd McCleary		2019-05-18

CAMPAIGN TO PROTECT RURAL ENGLAND, HAMPSHIRE BRANCH

England & Wales - Charity number 1164410

Accounts

CPRE Hampshire the countryside charity Annual Report

Year ended 31 December 2024

Registered charity
number 1164410



The countryside charity
Hampshire



CPRE Hampshire, the countryside charity

Our vision

A beautiful and thriving countryside
that enriches all our lives.

An Introduction

Our charity works to:

- Support communities to have their say on developments and changes in Hampshire.
- Promote the benefit of the countryside to everyone, wherever they live.
- Work with local and national government, and other organisations to promote planning policies that make the best use of land.
- Raise awareness of the Hampshire countryside as a vital space for health and wellbeing.
- Encourage care of our fields and hedgerows to help protect landscapes and wildlife.
- Call for homes that local people can afford to be built in the right places across the country.
- Celebrate and support businesses that give back to the Hampshire countryside.
- Promote renewable energy that doesn't damage the Hampshire countryside or wider environment.

Our mission

To promote, enhance and protect a
thriving countryside.

CPRE Hampshire Business Plan

Our Business Plan is regularly reviewed by the Board of Trustees and sets out the priorities for the year ahead.

The key priorities in our Business Plan are;

1. Our Planning Work which is carried out by our District Groups and Planning Policy Group
2. Our Project work which is overseen by a small team of core staff and delivers funded projects to protect or enhance the Hampshire Countryside.
3. Our marketing and Comms activity to aid delivery of our key priorities.

The key challenges facing CPRE Hampshire continue to be a falling membership base (1,000 members pre pandemic 850 by Dec 2024), limited financial resource base and a small staff team. We needed to focus on how to make the most of this limited resource to maximize our impact.

Photo shows our Magnificent Meadows
volunteers making hay by hand. Photo by
Rachel Remnant

Strategic Priority 1

Planning

Our planning work is carried out by district groups and coordinated by our Planning Policy Group (PPG).

Planning work operates on three levels:

1. Working with Local Planning Authorities on Hampshire Planning issues e.g. Local Plan reviews
2. Supporting National CPRE e.g. Strategic Landuse Framework
3. Strategic Campaigns e.g. water and rooftop renewables campaign

Working with Local Planning Authorities on Hampshire Planning issues

Locally we have sought to influence Local Plan Policies to conserve and enhance the Hampshire Countryside.

We have submitted substantial responses to:

- Hampshire Waste & Minerals Plan.
- Basingstoke & Deane Reg 18 Local Plan Review
- East Hampshire Reg 18 Local Plan Review
- Test Valley Reg 18 Local Plan Review.
- We are also working on responses for the New Forest National Park and New Forest District Council Local Plans and the South Downs National Park.



In addition, our local district groups have kept a watching brief on local planning applications and submitted over 50 responses to individual applications. We continue to promote the concept of Valued Landscapes to provide protection for high-quality countryside that is not nationally designated and to develop model policies for the use of our volunteers and others when commenting upon draft Local Plans.

Our water focus group continues to work with other interested partner groups to

- monitor and try to reduce levels of pollution in our precious Hampshire chalk streams most notably the River Test but also the Itchen and Lodden
- monitor Southern Water's proposals for the Hampshire Water Transfer and recycling project, including responding to various consultations on this



Local Planning, continued

We monitor on a regular basis the Nationally Significant Infrastructure Projects that affect Hampshire, again responding to applications and consultations relating to these. Examples would be the electrical Interconnector proposed to bring electricity via under the sea cables from France to the UK, and the proposed Energy Recovery Plant on the A31 outside of Alton.

We sit on, and provide input into, the Hampshire Environmental Land Management (ELMS) Board.

We monitor the Hampshire County Council proposals for their Nature Recovery Networks and our aviation expert has continued to regularly sit on the advisory board for and monitors proposals to expand the airspace at Farnborough Airport.

Key Planning Activity in 2024

CPRE Hampshire has been a consultee on a number of government led national planning consultations such for example:

- the National Planning Policy framework
- consultation on use of brownfield land
- permitted development rights

Supporting National CPRE with Strategic Campaigns

We work with the CPRE National Team where we have developed specific expertise that is useful to them for example on affordable housing and nationally imposed housing targets.

Engaging Local Candidates and New Representatives

In response to the General Election in 2024 CPREH prepared an election manifesto which was sent to all prospective local candidates prior to the general election in July and then follow up meetings held with a number of new MPs and councillors.



Strategic Priority 2 Projects

Our project work is carried out by a small team of dedicated staff with specialist knowledge in project areas.

Magnificent Meadows Project

In April 2024 we launched a new project to restore chalk meadows at Bar End in Winchester. We worked with local ecologist, Rachel Remnant from Land Lore consulting to organise training for local people to learn traditional meadow management techniques, including scything, making hay by hand, raking and box bailing hay to feed the local allotment sheep.

Protected Landscapes

2024 was the 75th anniversary of the National Parks and Access to the Countryside Act. Hampshire has 38% of its' land designated as Protected Landscapes, with 2 National Parks and three National Landscapes within its boundaries. We marked this occasion with a talk at our AGM and a special edition of Hampshire Views on Protected Landscapes.

Key Projects in 2024

We identified five project areas in our Business Plan. These were;

- Meadows
- Protected Landscapes
- Rooftop Renewables
- Hedgerows
- Hampshire Countryside Awards

Rooftop Renewables

We have worked with CPRE Sussex and the University of Southampton to develop an online map which shows the operational and pending solar farms across Hampshire. This is accessible via our rooftop renewable web page.

With funding support from The New Things Fund from the Centre for the South, we have been working with researchers from the Energy & Climate Change team at the University to demonstrate the potential of rooftop solar across Hampshire & Sussex.

In June 2024 we held a conference with Southampton University attended by over 50 delegates, following the conference on the 10th Oct we held an online launch of our online map and policy brief to promote the rooftop renewable campaign across Hampshire & Sussex.



Rooftop Renewables was a key project in 2024

The Hampshire Hedge Project

In 2024 we were into the second year of our Hampshire Hedge project with an ambitious target to create a green corridor of hedgerows between the South Downs and New Forest National Parks.

We have secured funding from: CPRE Hedgerows Project, The Linbury Trust, The National Lottery Heritage Fund, the Big Give, Hampshire County Council, The Tree Council and Spurgin Trust for the second year of the project. We also received donations in kind in the form of hedging plants, trees, guards and stakes from The Trees for the South Downs, Hampshire Forest Partnership and Tree Council.

Our full-time project officer, Ellie Banks, who started in July 2023, was joined by Yolande Lomas, who joined CPRE Hampshire for a 6-month hedgerow assistant role which ends in March 2025.

A full report for Year 1 was prepared and sent to funders and we are well on target in Year 2 to deliver on our targets.

A steering group with partners from the two National Parks, Sparsholt College, Tree Council, Winchester City Council and Test Valley Council meets regularly to support the project.



Countryside Award winners and funders 2024

Hampshire Countryside Awards 2024

With funding support from Hastoe Housing, Vitacress and Terraforma we ran a successful Countryside Awards in 2024. Launched in May at the AGM the awards attracted 24 entries over 4 categories.

The winners of each category had a special promotional video made for their project. These were shown at our Awards ceremony in December.

The Hampshire Choice Award went to the Blacknest Fields project in the South Downs National Park.

Hampshire Hedge key targets

- 5,000 meters of new hedgerow planted across 8 sites.
- 0.5miles of hedgerow restored.
- 18 training events held to teach people traditional hedge laying skills.
- 3 x 5-month hedge laying traineeships funded Community Hedge Fund established to support local projects.
- Engagement with local colleges and school has resulted in 100s of young people being engaged with the project.



Governance and Staffing

In 2024 two new Trustees joined the CPRE Hampshire Board, Ben Goodhall (Treasurer) and David Rigby.

Our Operations Manager, Alison Talbot, continues to lead the small team which are based at Sparsholt College.

Our Finance Officer is Jo Wyatt, who continues to keep our finances on track.

Rebecca Simpson our Comms Officer works for us on a freelance basis one day per week, We have also been using the services of a freelance planning consultant to help with our responses to Local Plan reviews..

Our Hedgerow Project Officer, Ellie Banks, has continued to lead on the Hampshire Hedge project and was joined in October by Yolande Lomas who has worked as the hedgerow assistant role attached to the Hampshire Hedge project between October and March.

We have had numerous students come and volunteer on part time, time limited projects, bringing new ideas, energy and enthusiasm to the team. We have a regular 'office day' on Tuesdays in our office on the Sparsholt college campus.



CPRE Staff team and volunteers at the New Forest Show 2024.

Marketing and Communications

Our Bi -Annual Hampshire Views magazine continues to be a key means of communicating with our membership. We have now got the capability to produce it in house and have introduced a new look to the magazine. In addition, we produce e newsletter updates on our work to members, in 2024 we have produced four hedgerow specials and a countryside awards edition and Parish Council special e- newsletter.

We also regularly post on our Facebook, Twitter and Instagram account.

PR success has been focussed on the Hampshire Hedge project, with coverage on BBC South Today , and the Countryside Awards, with coverage in Hampshire Life magazine.



The team at Southampton University Climate Change Division with Paul Steedman (CPRE Sussex) and Alison Talbot (CPRE Hampshire) at the rooftop solar conference |

We are CPRE The Countryside Charity

CPRE is the countryside charity that campaigns to promote, enhance and protect the countryside for everyone's benefit, wherever they live; today and for generations to come.

With a local CPRE in every county, we work with communities, businesses and government to find positive and lasting ways to help the countryside thrive.

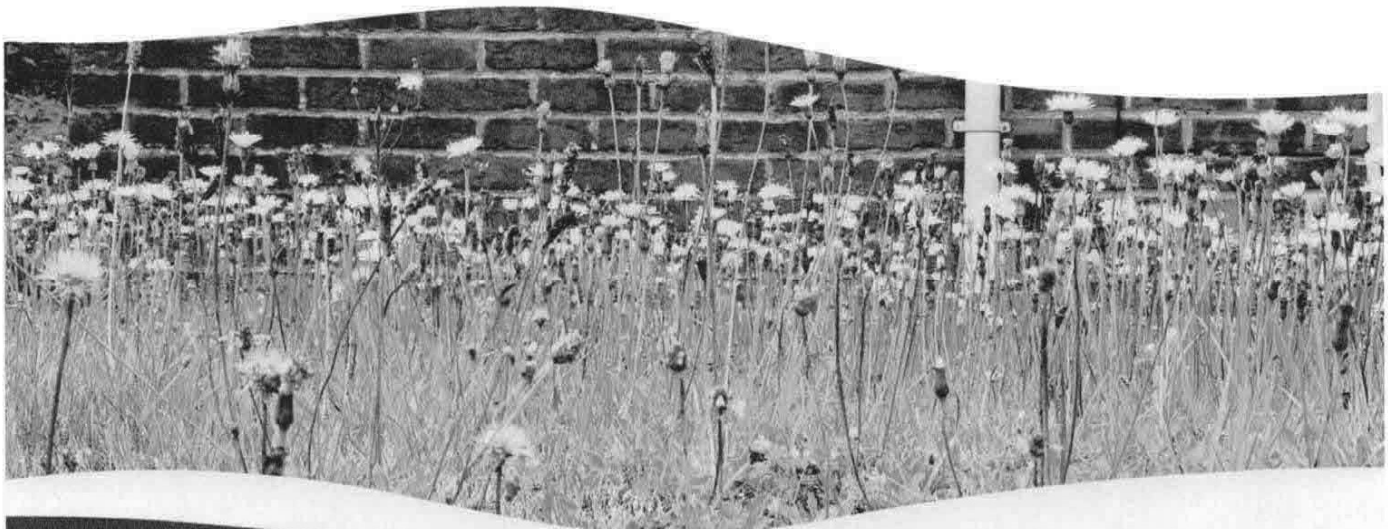
What we do

- We connect people with the countryside so that everyone can benefit from and value it.
- We promote rural life to ensure the countryside and its communities can thrive.
- We empower communities to improve and protect their local environment.

Through all our work we look at the role of our countryside in tackling the climate emergency, including seeking ways to increase resilience and reduce impact.

Our Address:

CPRE Hampshire
c/o Sparsholt College Hampshire
Westley Lane
Sparsholt
Winchester
Hants
SO21 2NF
Tel: 01962 797312



Visit our website
cprehampshire.org.uk

Email: admin@cprehampshire.org.uk
Registered charity number: 1164410

Campaign to Protect Rural England Hampshire Branch CIO

2 Statement of Financial Activities for the Year Ended December 31st 2024

		Unrestricted	Restricted	Total	
	Note	Funds	Funds	2024	2023
		£	£	£	£
Incoming Resources					
Membership Subscriptions		35,343		35,343	30,370
Fund Raising and Events		1,055		1,055	697
Donations		3,436		3,436	3,160
Trusts and Corporate		9,000	146,524	155,524	88,686
Investment Income		3,608		3,608	3,331
District Groups		223		223	3,089
Total Incoming Resources	3	52,665	146,524	199,189	129,333
Expenditure					
Staff Costs		49,358	51,204	100,562	71,395
Administration Costs		8,125		8,125	11,035
Other		10,393	76,214	86,607	46,905
Total Resources Expended	4	67,875	127,418	195,294	129,335
Gains/(Losses) on investment Asset		1,529		1,529	(140)
Net Movement of Funds	-	13,681	19,106	5,424	142
Opening Fund Balance		95,423	2,193	97,618	97,760
Closing Fund Balance		81,742	21,299	103,042	97,618

		2024		Total	2023
		Unrestricted	Restricted	Total	Total
		£	£	£	£
3 Incoming Resources					
Membership Subscriptions		35,343		35,343	30,370
District Groups		223		223	3,089
Merchandise		49		49	63
Donations		3,206		3,206	1,897
Fundraising		74		74	-
Trusts and Corporate		9,000	146,524	155,524	88,686
500 Club		932		932	634
Gift Aid		-		-	514
Branch Appeal		230		230	750
Investment Income		3,608		3,608	3,331
Total Incoming Resources		52,665	146,524	199,189	129,333

Campaign to Protect Rural England Hampshire Branch CIO

Statement of Financial Activities for the Year Ended December 31st 2024

		Unrestricted Funds £	Restricted Funds £	Total 2024 £	2023 £
4 Resources Expended					
Staff Costs	5	49,358	51,204	100,562	71,395
Office and Venue rent		3,015		3,015	3,719
IT Telecomms Broadband		2,106		2,106	3,009
Planning		1,900	-	1,900	-
Hedgerow costs			-	-	-
Insurance		310		310	970
Printing Copying Stationery		455		455	1,021
Postage		1,097		1,097	2,789
Professional fees		-		-	600
Subscriptions		420		420	410
Branding		-		-	167
Training		14	-	14	3,462
Depreciation		434		434	507
Other costs		8,766	76,214	84,980	41,286
Total Resources Expended		67,875	127,418	195,294	129,335
		2024	2023		
5 Staff Costs		£	£		
Staff Salaries		100,562	71,395		
Recruitment		-	-		

No employee earned more than **£60,000**.

The number of employees at the end of the year was **four** (three 2023)

No trustee received any remuneration during the year

Campaign to Protect Rural England Hampshire Branch CIO

1 Statement of Financial Position as at December 31st 2024

	Note	December 31st 2024 £	December 31st 2023 £
Fixed Assets			
Tangible Assets	6	1,590	1,778
Investments	7	52,580	51,051
		<u>54,170</u>	<u>52,829</u>
Current Assets			
Accrued Income & Prepayments	8	20,234	14,685
Cash at Bank		82,919	58,020
Building Society Account	9	21,540	41,000
		<u>124,694</u>	<u>113,705</u>
Creditors			
Accrued Expenditure	10	1,360	1,523
Accounts Payable	11	3,788	7,526
Income received in Advance/Deferred Income	12	70,674	59,867
			-
			-
Net Current Assets		<u>75,822</u>	<u>44,789</u>
Total Assets Less Current Liabilities		103,042	97,618
Income Funds			
Unrestricted Funds		81,742	74,700
Restricted Funds		21,299	22,918
Total Income Funds		103,042	97,618

INDEPENDENT EXAMINERS REPORT TO THE TRUSTEES OF THE CAMPAIGN TO PROTECT RURAL ENGLAND, HAMPSHIRE BRANCH CIO

I report to the trustees on my examination of the accounts of the charity for the year ended December 31st 2024

The charity's trustees are responsible for the preparation of the accounts in accordance with the requirements of the Charities Act 2011. The charity's trustees consider that an audit is not required for this year under section 144 of the Charities Act 2011 ("the Charities Act") and that an independent examination is needed.

It is my responsibility to:

- examine the accounts under section 145 of the Charities Act,
- to follow the procedures laid down in the general Directions given by the charity Commission (under section 145(5)(b) of the Charities Act, and
- to state whether particular matters have come to my attention.

Basis of Independent Examiners report

My examination was carried out in accordance with general Directions given by the Charity Commission. An examination includes a review of the accounting records kept by the charity and a comparison of the accounts presented with those records. It also includes consideration of any unusual items or disclosures in the accounts, and seeking explanations from the trustees concerning any such matters. The procedures undertaken do not provide all the evidence that would be required in an audit, and consequently no opinion is given as to whether the accounts present a "true and fair" view and the report is limited to those matters set out in the statement below.

Independent Examiners Statement

In connection with my examination, no matter has come to my attention:

1. which gives me reasonable cause to believe that in any material respect the requirements:

- to keep accounting records in accordance with section 130 of the 2011 Act; and
- to prepare Accounts which accord with the accounting records and comply with the accounting requirements of the Accounting and Reporting by Charities: Statement of Recommended Practice applicable to charities preparing their accounts in accordance with the financial Reporting Standard applicable in the UK (FRS102).

have not been met.

2. to which, in my opinion, attention should be drawn in order to enable a proper understanding of the Accounts to be reached.



Mrs Caroline Scull FCCA
B20 Limited

16 May 2025

CAMPAIGN TO PROTECT RURAL ENGLAND, HAMPSHIRE BRANCH

England & Wales - Charity number 1164410

Accounts



The countryside charity
Hampshire

c/o Sparsholt College
Westley Lane
Sparsholt
Hampshire
SO21 2NF

Tel: 01962 797312

admin@cprehampshire.org.uk

www.cprehampshire.co.uk

Working locally and nationally for
a beautiful and living countryside.

CPRE Hampshire the countryside charity

Annual Report - year ended 31 December 2023

Registered charity number 1164410

Introduction

The Charitable objects of CPRE Hampshire are to promote and encourage for the benefit of the public the improvement, protection and preservation of the countryside of Hampshire and its towns and villages, and the better development of the rural environment. CPRE Hampshire works closely with National CPRE but is a separate charity.

CPRE Hampshire Business Plan

In January 2023 the Trustees held a strategy day to work with the new Operations Manager, Alison Talbot, on the development of a Business Plan to guide and focus our work.

The key challenges facing CPRE Hampshire were a falling membership base (over 1,000 members pre pandemic to 915 by Dec 2023), limited financial resource base and a small staff team, largely on freelance contracts. We needed to focus on how to make the most of this limited resource to maximize our impact.

The two key priorities in our Business Plan are Planning and Projects, with some marketing and Comms activity to aid delivery of our key priorities.

Strategic Priority 1 - Planning

Our planning work is carried out by district groups and coordinated by our Planning Policy Group (PPG).

Planning work operates on 3 levels:

- Supporting National CPRE e.g. Levelling Up Bill
- Working with Local Planning Authorities on Hampshire Planning issues e.g. Hampshire Minerals & Waste Plan consultations and Local Plan reviews
- Strategic Campaigns e.g. water and rooftop renewables campaign.

President
Earl of Malmesbury

Chair
Margaret Paren

Registered charity number 1164410

Key planning activities in 2023

National Level Planning. CPRE Hampshire has been a consultee on the Levelling Up Bill and National Planning Policy Framework. We have sought to ensure that national policy framework works to conserve and enhance the Countryside.

Locally we have sought to influence Local Plan Policies to conserve and enhance the Hampshire Countryside.

We have submitted substantial responses to:

The Hampshire Minerals & Waste Local Plan

Basingstoke & Deane Reg 18 Local Plan Review

East Hampshire Reg 18 Local Plan Review

Test Valley Reg 18 Local Plan Review.

In addition, our local district groups have kept a watching brief on local planning applications and submit regular responses to individual applications. We continue to promote the concept of Valued Landscapes to provide protection for high-quality countryside that is not nationally designated and to develop model policies for the use of our volunteers and others when commenting upon draft Local Plans. Our model policies have all been reviewed and updated in 2023.

Strategic Planning Campaigns

Our Water Focus team has been active in many forums over the year. They attended a 'River Summit' in Kimbridge, Test Valley and a Community Chat organised by Basingstoke MP on 'Protecting the environment and our local rivers' in October 2023. Following an abortive last-minute attempt by the Government to amend the LURB to abolish the regulations on nutrient neutrality, we continued to monitor the situation in case the proposal was re-introduced

The National Campaign to promote Rooftop Solar was launched in 2023 and in Hampshire we have carried this baton forward and developed a project working with CPRE Sussex and the University of Southampton's Energy and Climate Change Division to identify and map potential rooftop sites across Hampshire and Sussex.

Strategic Priority 2 – Projects

In 2023 our aim was to deliver 4 projects which:

- Make money for CPREH to support our core work.
- Raised the profile of CPREH and helped us reach new audiences.
- Fitted well with our expertise and experience.
- Meet our charitable objectives.
- Engage with partners that we want to work with.

We identified five project areas in our Business Plan. These were Hedgerows, Dark Night Skies, Litter, Rooftop Renewables and the Hampshire Countryside Awards.

The Hampshire Hedge Project

We have established a three-year project with an ambitious target to create a green corridor of hedgerows between the South Downs and New Forest National Parks. We have secured funding from CPRE Hedgerows Project (£50,000), Linbury Trust (£40,000), the National Lottery Heritage Fund (£40,000), the Big Give (£9,800) and Spurgin Trust (£2,000) for the first year of the project, as well as hedging plants, trees, guards and stakes from The Trees for the South Downs, Hampshire Forest Partnership and Tree Council. Total Funding support in Year 1 £141,800, note year 1 of project runs until 31.3.24.

We appointed a full-time project officer, Ellie Banks, who started in July 2023. In September she was joined by a student intern from Plymouth University, Alex Jackaman, who joined CPRE Hampshire for a 6-month student placement which ends in March 2024.

Year 1 is well on target to deliver against its targets. Key targets are 5,000 meters of new hedgerow planted across 8 sites. 0.5miles of hedgerow restored. 18 training events held to teach people traditional hedge laying skills. 3 x 5-month hedge laying traineeships funded and the Community Hedge Fund established to support local projects. Engagement with local colleges and school has resulted in 100s of young people being engaged with the project.

A steering group with partners from the two National Parks, Sparsholt College, Tree Council, Winchester City Council and Test Valley Council meets regularly to support the project.

In April work will begin on planning for Year 2 of the project, with funding being finalised and our Big Give campaign launched.

Dark Night Skies

In February 2023 over 200 people across Hampshire took part in CPRE's Annual Star Count, which was a record (up from 92 people the previous year), over 46.3% recorded less than 10 stars indicating severe light pollution, whilst only 7.5% recorded over 30 stars, truly dark skies.

We have put forward a costed project proposal to New Forest National Parks Authority to co-ordinate a 3-year project to secure a Dark Night skies designation for the New Forest area. Work is ongoing to progress this project.

Litter

In December 2023 we officially thanked the work of the Winchester litter picking group, who held regular litter picking events in and around Winchester. The group is no longer operating but achieved considerable success in its lifetime.

Rooftop Renewables

We have worked with our PPG group and the University of Southampton to develop an online map which shows the operational and pending solar farms across Hampshire. This is accessible via our rooftop renewable web page.

With funding support from The New Things Fund from the Centre for the South, we have been working with researchers from the Energy & Climate Change team at the University to demonstrate the potential of rooftop solar across Hampshire & Sussex. The results will be showcased at a conference in Southampton in June 2024.

Hampshire Countryside Awards 2023

With funding support from Hampshire County Council, Hastoe Housing and the Newbury Building Society we ran a successful Countryside Awards in 2023. Launched in May at the AGM the awards attracted 24 entries over 4 categories. The winners of each category had a special promotional video made for their project. These were shown at our Awards ceremony in December, attended by Deputy Lord Lieutenant. The Hampshire Choice Award went to the PUPS project at Ballard Water Meadows, New Milton.

Strategic Priority 3 - Marketing , Communication & Events

Events

The North Hampshire group held a successful couple of fundraising events in 2023, a Bluebell Walk in April and music concert in the Summer raising over £2,500 for CPREH funds.

CPREH had a stall at the 3-day New Forest and Hampshire Show in July, making good contacts that lead to hedge planting at Show Ground in the Autumn.

In September we trailed a couple of successful and popular foraging events, working with a local chef and forager to explore hedgerow edibles!

In November we hosted a national hedgerow hero event to co-incide with the launch of our Hampshire Hedge project. A team from Defra and National CPRE attended, alongside 50 invited guests and students from Sparsholt college.

We rounded off the year with our Countryside Awards ceremony at Kings Somborne Village Hall in December. Invited guests enjoyed a 'film show' of all the category winners and the Hampshire Choice award winner was announced.

Marketing and Communications

Our Bi -Annual Hampshire Views magazine continues to be a key means of communicating with our membership. We have now got the capability to produce it in house and have introduced a new look to the magazine.

In addition, we produce e newsletter updates on our work to members, in 2023 we have produced a dark night sky special, a Parish Council special , three hedgerow specials and a countryside awards edition.

We also regularly post on our Facebook, Twitter and Instagram account.

PR success has been focussed on the Hampshire Hedge project , with coverage on BBC South Today , and the Countryside Awards , with a piece in Hampshire Life.

Governance and Staffing

At the start of the year, we were joined by a new Operations Manager, Alison Talbot.

Two new younger Trustees also joined the Board, Nat Wood and Simon Beetham.

Following the ill health and subsequent sad death of our Treasurer, Martin Gillie, we reorganised the roles around our finance work. Mandy Roberts left the admin role, and we replaced this post with a Finance Officer role which was filled by Jo Wyatt, who started work for CPREH in June 2023.

The Comms role saw some change, a move to change from a freelance arrangement to contract, did not work out past a probation period. We reverted to a freelance arrangement with Vicky Marr leading on Hampshire Views and the e- newsletters and Rebecca Simpson helping with the development of our website.

Our Hedgerow Project Officer, Ellie Banks, joined us in July on a full-time contract and we have had a 6-month student intern role attached to the Hampshire Hedge project between September and March.

We have had numerous students come and volunteer on part time, time limited projects, bringing new ideas, energy and enthusiasm to the team.

We have a regular 'office day' on Tuesdays in our office on the Sparsholt college campus.

Campaign to Protect Rural England Hampshire Branch CIO

1 Statement of Financial Position as at December 31st 2023

		December 31st 2023	December 31st 2,022
	Note	£	£
Fixed Assets			
Tangible Assets	6	1,778	773
Investments	7	51,051	51,191
		<u>52,829</u>	<u>51,964</u>
Current Assets			
Accrued Income & Prepayments	8	14,685	7,500
Cash at Bank		58,020	33,434
Building Society Account	9	41,000	26,000
		<u>113,705</u>	<u>66,934</u>
Creditors			
Accrued Expenditure	10	1,523	3,965
Accounts Payable	11	7,526	-
Income received in Advance/Deferred Income	12	59,867	17,173
Net Current Assets		<u>44,789</u>	<u>45,795</u>
Total Assets Less Current Liabilities		97,618	97,760
Income Funds			
Unrestricted Funds		74,700	95,567
Restricted Funds	11	22,918	2,193
Total Income Funds		97,618	97,760

Campaign to Protect Rural England Hampshire Branch CIO

2 Statement of Financial Activities for the Year Ended December 31st 2023

	Unrestricted Funds		Restricted Funds	Total	2022
Note	£	£	£	£	£
Incoming Resources					
Membership Subscriptions	30,370			30,370	31,446
Fund Raising and Events	697			697	7,755
Donations	3,160			3,160	6,150
Trusts and Corporate	221	88,465		88,686	21,855
Investment Income	3,331			3,331	2,400
District Groups	3,089			3,089	1,865
Total Incoming Resources	40,868	88,465		129,333	71,471

Expenditure					
Staff Costs	44,241	27,154		71,395	33,701
Administration Costs	11,035			11,035	11,907
Other	6,319	40,586		46,905	12,625
Total Resources Expended	61,595	67,740		129,335	58,233
Gains/(Losses) on investment Asset:	(140)			(140)	(4,405)
Net Movement of Funds	20,867	20,725	-	142	8,833
Opening Fund Balance	95,567	2,193		97,760	88,927
Closing Fund Balance	74,700	22,918		97,618	97,760

	2023	2023	2023	2022
	Unrestricted	Restricted	Total	Total
	£	£	£	£

3 Incoming Resources				
Membership Subscriptions	30,370		30,370	31,446
District Groups	3,089		3,089	8,156
Merchandise	63		63	664
Donations	1,897		1,897	3,091
Trusts and Corporate	221	88,465	88,686	21,855
500 Club	634		634	800
Gift Aid	514		514	1,126
Branch Appeal	750		750	1,933
Investment Income	3,331		3,331	2,400
Total Incoming Resources	40,868	88,465	129,333	71,471

Campaign to Protect Rural England Hampshire Branch CIO

Statement of Financial Activities for the Year Ended December 31st 2023

	Unrestricted Funds	Restricted Funds	Total	2022
	£	£	£	£
4 Resources Expended				
Staff Costs	44,241	27,154	71,395	33,701
Office and Venue rent	3,719	-	3,719	2,999
IT Telecomms Broadband	3,009	-	3,009	2,487
Consultancy reports	-	-	-	672
Hedgegrow costs	-	-	-	4,467
Insurance	497	473	970	466
Recruitment	-	-	-	641
Printing Copying Stationery	1,021	-	1,021	3,719
Postage	2,789	-	2,789	2,236
Professional fees	600	-	600	180
Subscriptions	410	-	410	334
Branding	167	-	167	1,191
Training	-	3,462	3,462	1,500
Depreciation	507	-	507	348
Other costs	4,635	-	4,635	3,293
Total Resources Expended	61,595	67,740	129,335	58,233

5 Staff Costs

	2023	2022
	£	£
Staff Salaries	71,395	33,701
Recruitment	-	641
Staff Expenses	-	-

No Employee earned more than £60,000. The number of employees at the end of the year was three
No Trustee received any remuneration during the year

Campaign to Protect Rural England Hampshire Branch CIO

Statement of Financial Position for the Year Ended December 31st 2023

	£	£	Total
6 Fixed Assets	IT	other	
Costs at 31/12/22	1,651	-	1,651
additions	960	552	1,512
Disposals	-	-	-
Balance at 31/12/23	2,611	552	3,163

	£	£	Total
Depreciation	IT	other	
Costs at 31/12/22	878	-	878
Depreciation	501	6	507
Disposals	-	-	-
Balance at 31/12/23	1,379	6	1,385
NBV at 31/12/22	773		773
NBV at 31/12/23	1,232		1,232

IT depreciated over 3 years
Other Equipment depreciated over 8 years

7 Investments	2023	2022
	£	£
M&G Charity Funds		
Market Value as at January 1st	51,191	45,596
Purchases during the year	-	10,000
Gains/Losses at year end	140	4,405
Market Value at December 31st	51,051	51,191
Consisting of		
M&G Charity Fixed Interest Fund	26,621	26,174
M&G Charity Multi Asset Fund	24,430	25,017
M&G Equities Investment Fund for		
Total Value	51,051	51,191

Campaign to Protect Rural England Hampshire Branch CIO

Statement of Financial Position for the Year Ended December 31st 2023

	2023	2022
8 Prepayments		
Members Subscriptions	5,238	7,500
Rent	190	-
	<u>5,428</u>	<u>7,500</u>

Accrued Income		
Heritage lottery HH3 G	9,257	-
	<u>9,257</u>	<u>-</u>

Prepayments and Accrued Income	14,685	7,500
--------------------------------	--------	-------

	2023	2022
9 Current Assets		
Shipton Building Society	20,000	21,000
Monmouth Building Society	21,000	-
Building Society Accounts	41,000	21,000

10 Accrued Expenditure		
Accruals	1,523	3,965

11 Accounts payable		
Creditors and Taxes	1,523	3,965

Income received in Advance/Deferred Income		
Income for the Hedgerow project to be completed in 2023		
Restricted Funds		
Income for the Hedgerow project to be completed in 2023		

13 These relate to the Hedgerow Project.

Taxation

14 The charity is exempt from taxation on its charitable activities under section 505 (1) of the Income and Corporation Taxes Act 1988

Dissolution

15 If the CIO is wound up, the members have no liability to contribute to its assets and no personal responsibility for settling its debts and liabilities

INDEPENDENT EXAMINERS REPORT TO THE TRUSTEES OF THE CAMPAIGN TO PROTECT RURAL ENGLAND, HAMPSHIRE BRANCH CIO

I report to the trustees on my examination of the accounts of the charity for the year ended December 31st 2023.

The charity's trustees are responsible for the preparation of the accounts in accordance with the requirements of the Charities Act 2011. The charity's trustees consider that an audit is not required for this year under section 144 of the Charities Act 2011 ("the Charities Act") and that an independent examination is needed.

It is my responsibility to:

- examine the accounts under section 145 of the Charities Act,
- to follow the procedures laid down in the general Directions given by the charity Commission (under section 145(5)(b) of the Charities Act, and
- to state whether particular matters have come to my attention.

Basis of Independent Examiners report

My examination was carried out in accordance with general Directions given by the Charity Commission. An examination includes a review of the accounting records kept by the charity and a comparison of the accounts presented with those records. It also includes consideration of any unusual items or disclosures in the accounts, and seeking explanations from the trustees concerning any such matters. The procedures undertaken do not provide all the evidence that would be required in an audit, and consequently no opinion is given as to whether the accounts present a "true and fair" view and the report is limited to those matters set out in the statement below.

Independent Examiners Statement

In connection with my examination, no matter has come to my attention:

1. which gives me reasonable cause to believe that in any material respect the requirements:

- to keep accounting records in accordance with section 130 of the 2011 Act; and
- to prepare Accounts which accord with the accounting records and comply with the accounting requirements of the Accounting and Reporting by Charities: Statement of Recommended Practice applicable to charities preparing their accounts in accordance with the financial Reporting Standard applicable in the UK (FRS102).

have not been met.

2. to which, in my opinion, attention should be drawn in order to enable a proper understanding of the Accounts to be reached.



Mrs Caroline Scull FCCA
B20 Limited

12 April 2024