



ACTIVE8

youth disability charity

CORNWALL

Charity number: 1163942

ANNUAL

REPORT

2024-2025





“To me Active8 means a place to belong, and it also means trying new things with the right support. I have enjoyed Active8 because it has made me push my limits but also supported me in doing so and I love every month away with all my best friends. Active 8 has given me a lot more confidence and independence than I would’ve had without it, and also given me friendships that I know will last a lifetime.”

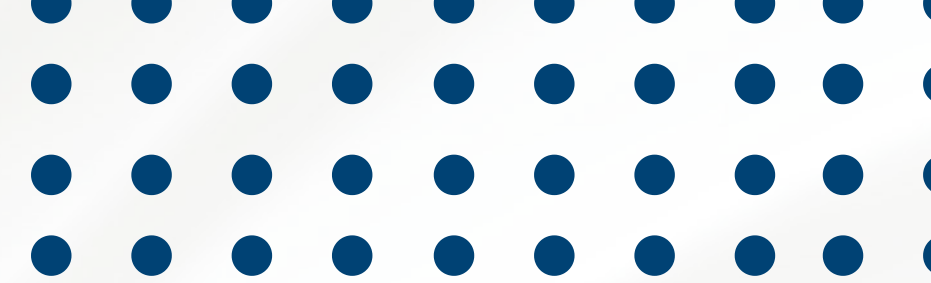
Acceler8 member 2025

TABLE OF CONTENTS



- Page 4 - Executive Summary**
- Page 5 - Mission and Vision**
- Page 6 - Active8's Pillars**
- Page 7 - Our Impact**
- Page 8 - Acceler8**
- Page 10 - Illumin8**
- Page 12 - Mentoring**
- Page 14 - Advocacy**
- Page 15 - Accessible Transport**
- Page 16 - Other Achievements**
- Page 17 - Organisational Structure**
- Page 20 - Fundraising**
- Page 21 - Looking to the future**
- Page 22 - Finances**
- Page 23 - Signatories**
- Page 24 - Independent examiners report**
- Page 25 - Receipts and Payments account**
- Page 26 - Statement of Assets and Liabilities**
- Page 27 - Restricted funds**
- Page 29 - References and administrative information**






EXECUTIVE SUMMARY

Active8 is a Cornwall based charity supporting young people with physical disabilities. Our mission is to provide accessible opportunities to young people with physical disabilities to become more independent.

We support Active8 members to challenge the status quo and be a catalyst for improvement in the quality of life of young individuals and our community. The Trustees have complied with their duty to have regard to the Charity Commissions' public benefit guidance when planning activities for the year.



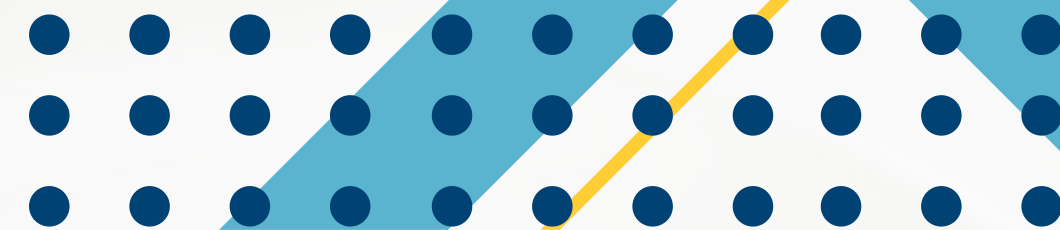
MISSION

Our mission is to support young people with physical disabilities in Cornwall to become autonomous individuals and to have their voices heard.



VISION

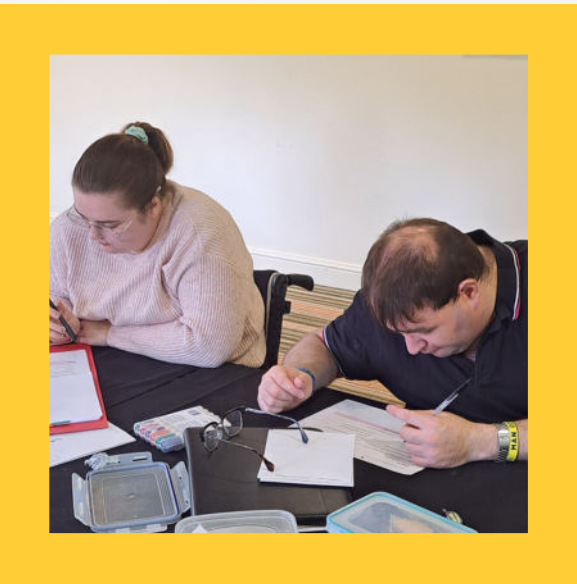
Our vision is for a world where all young people are accepted for the person they are and the person they want to be so that they can fully embrace life's opportunities.





ACTIVE8'S PILLARS

MENTORING



ACCELER8



ADVOCACY



ILLUMIN8

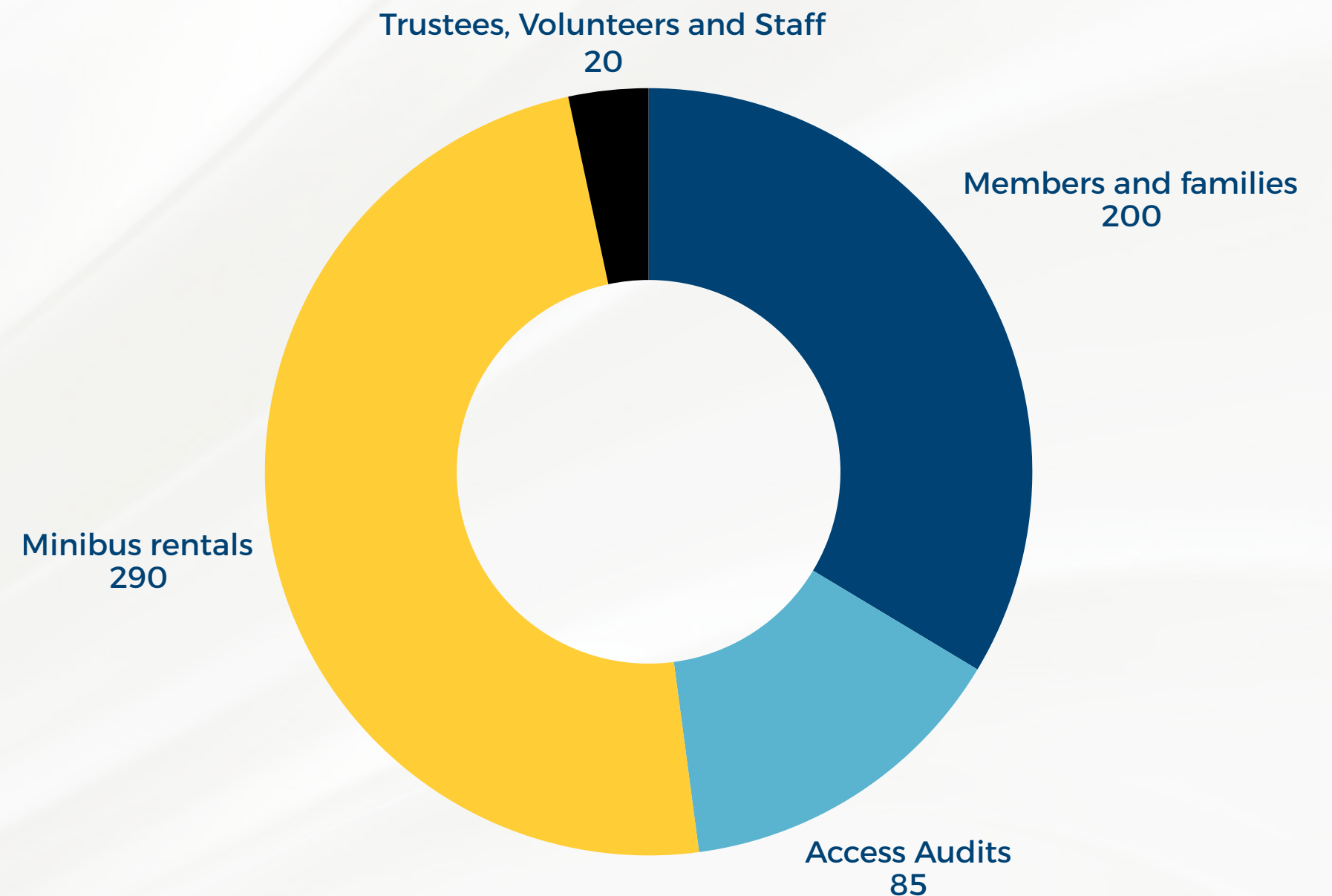
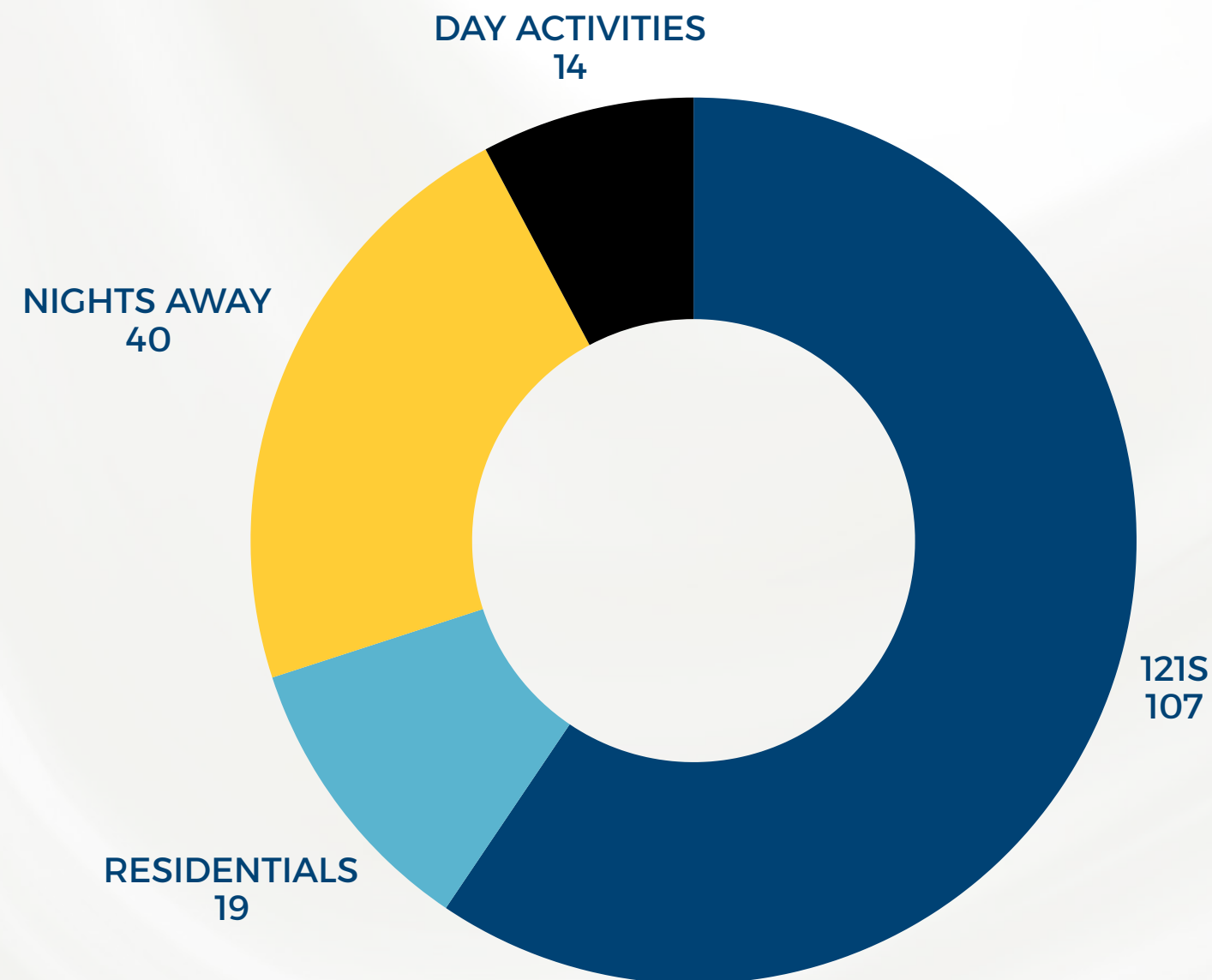


**ACCESSIBLE
TRANSPORT**



OUR IMPACT

OVER THE LAST 12 MONTHS WE HAVE SUPPORTED OVER 600 INDIVIDUALS, FAMILIES AND ORGANISATIONS THROUGH THE VARIOUS ACTIVE8 PILLARS.



ACCELER8

This year we continued to progress with our March 2024 cohort as they completed the first year of their programme and continued into their second year.

Over the last 12 months the group have met for a residential weekend each month as well as a week long trip in June to the Wheelpower National Junior Games at Stoke Mandeville.

Aug - Camping, surfing and canoeing

Sept - Mental health training and escape room

Oct - Try a train and fright night

Nov - Woodturning and wheelchair basketball

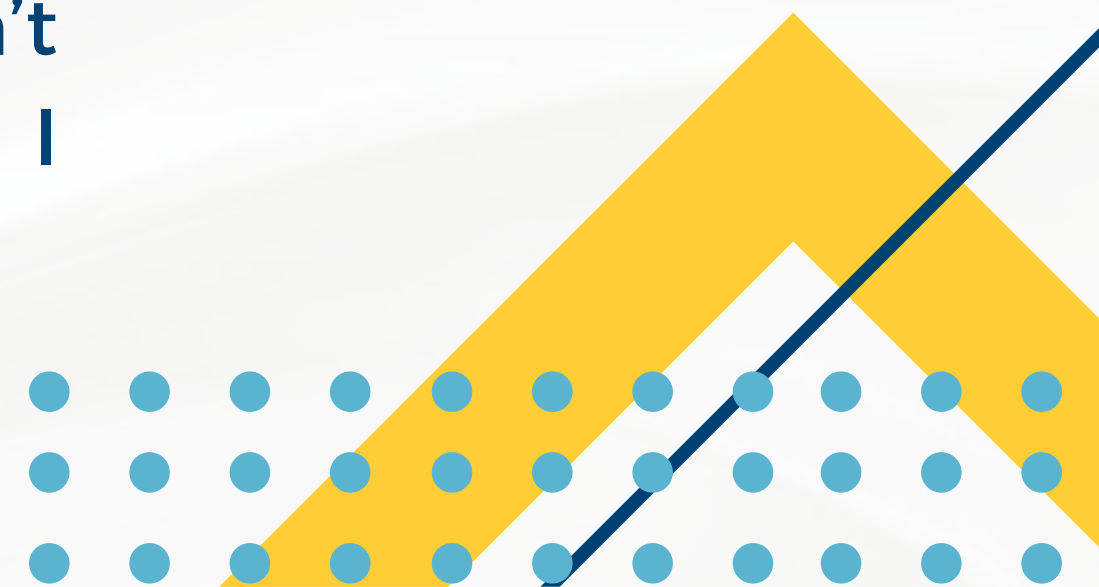


Dec - Christmas crafts and present shopping
Jan - Radio show and ice skating
Feb - First aid training and trip to the seal sanctuary
Mar - Stain glass window workshop and murder mystery
Apr - Driving assessments and lesson and screen printing
May - Graffiti workshop and lightsaber choreography
June - Week at the Wheelpower National Junior

Games in Stoke Mandeville

July - Escape room, mentoring evaluation
and music festival

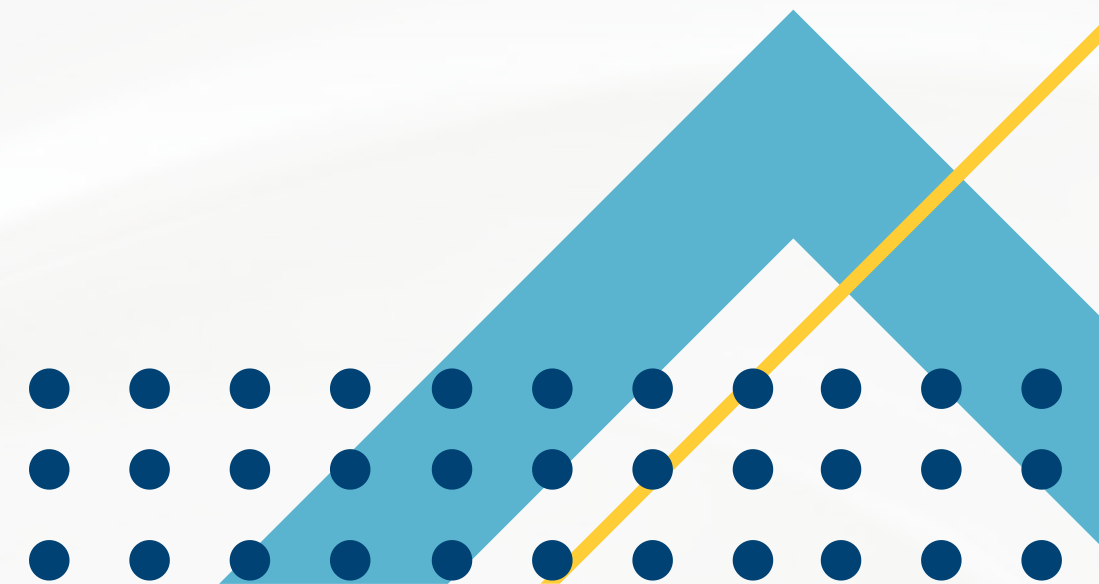
“I’ve learnt that my barriers aren’t
really a big deal at all, and that I
can do more than I thought.”
Acceler8 member



ILLUMIN8

This year starts the evolution of the project as we secured continuation funding for an additional 5 years from the National Lottery. It has meant we have been able to continue to deliver our services to our 18-30 year olds and with newly recruited staff progress our offering and recruit new young people to our programme.

In the last 12 months we have been able to recruit an additional five young people to the group over 30.



This year the Illumin8 group have done five
residentials (over 10 nights) and seven day activities
including:

Aug - Flying lessons with Aerobility

Sept - City residential to Bath

Oct - Escape room

Nov- Christmas shopping in Exeter

Dec - Christmas party residential

Jan - Butlins Back to the 00's weekend

Feb - Cooking workshop

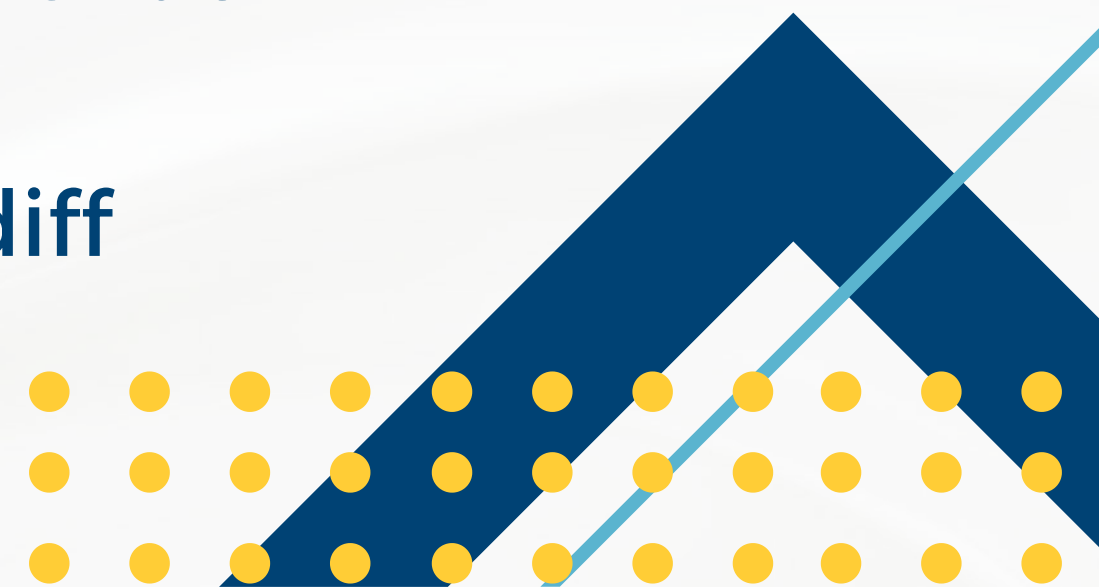
Mar - Sports and Crafts Hotel residential

Apr - A trip to Dartmoor Zoo

May - City residential to Cardiff

June - Cookery workshop

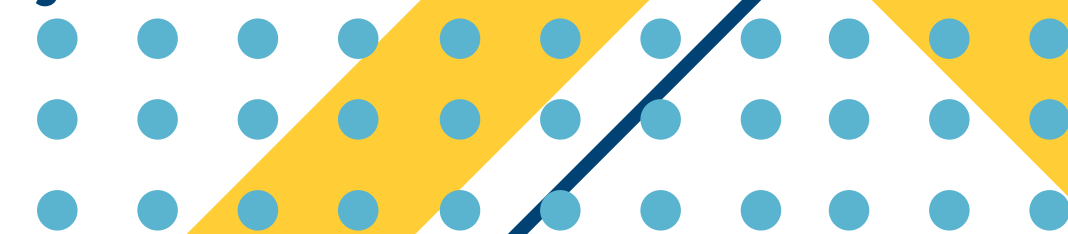
July - Music concert



MENTORING

After securing funding in the last financial year we were able to role out the next cohort of mentoring with our Illumin8 members in September 2024. Active8 staff ran two residential weekends in September and October 2024 for 8 Illumin8 members who all complete their AQA Level 3 Mentoring Qualification. After the training was complete the group hosted a get to know you event with their mentees in November and began 121 sessions in January 2025.

During the programme, there were over 36 mentoring sessions carried out by the members.



MENTORING

At the first mentoring sessions the pairs identified a number of objectives for them to work towards. Over the following 6 months the pairs worked to achieve these objectives.

In July 2025 the mentors and mentees met as a group again to talk about their experiences, feedback on the journey and discuss the future of their mentoring.

4 of the 8 pairs decided to carry on past the 6 months and create some new objectives.

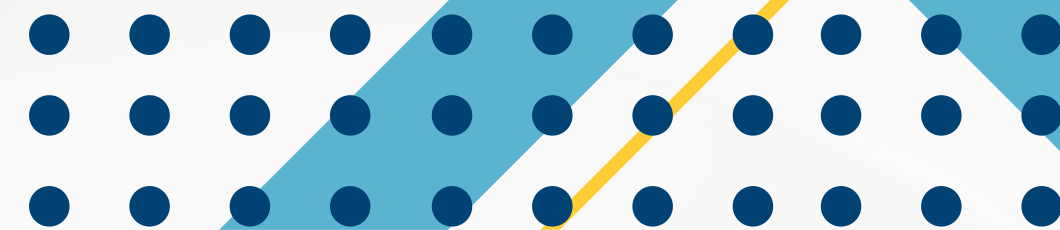
There were a range of objectives completed by the mentees such as:

- “To pass my driving theory test and to find a course for university.”
- “To have sleepovers more.”
- “To buy items from the shop independently.”

Our members feel that their mentors were supportive and able to give valuable advice. Quotes from the mentees about their mentors:

“They are good at finding solutions to things I might be struggling with as well as providing advice and opportunities for the things I’d like to do.”

“They shared their experiences with college and how to deal with exam stresses.”



ADVOCACY

At Active8 we endeavor to support organisations and local communities to engage young people with disabilities and to support our members to advocate for better access.

Over the last 12 months we have been involved in a number of projects supporting advocacy for disabled people, young people and those living in Cornwall.

We have supported various organisations including the following:

The Royal Cornwall Hospital Trust

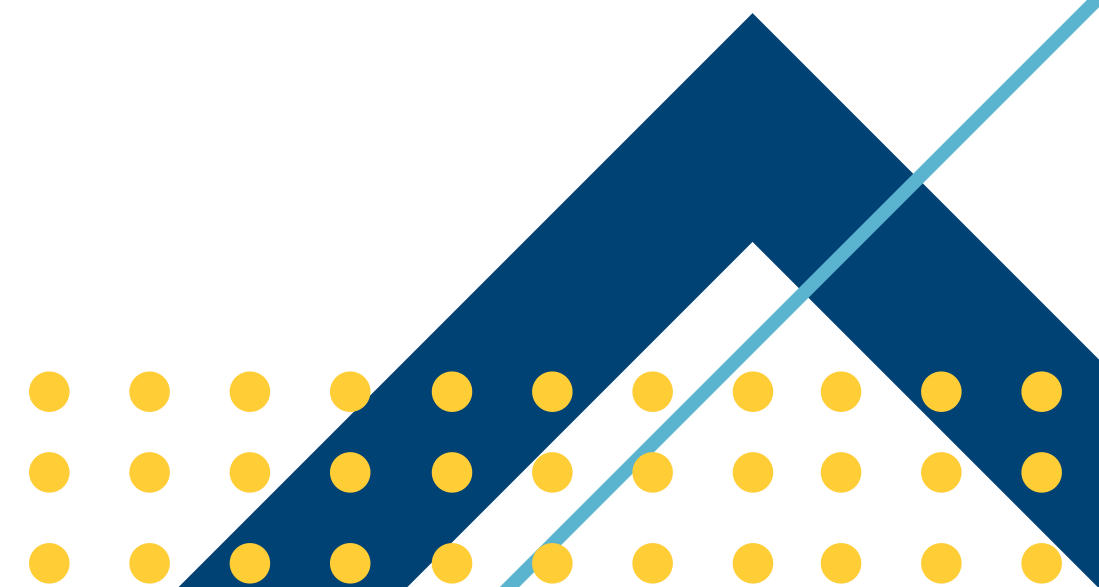
The Environment Agency

Cornwall Council

Cormac

Bude Town Council

Gwennap Parish Council



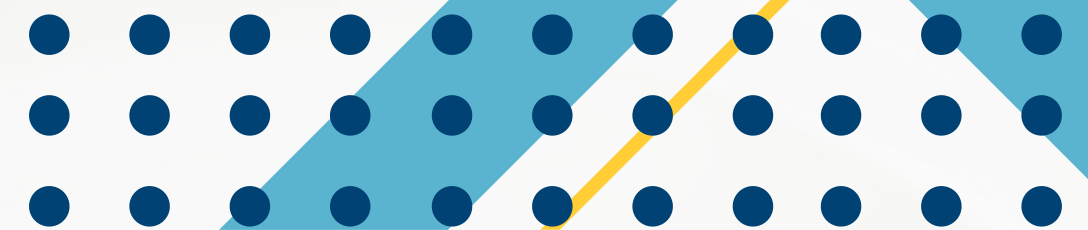
ACCESSIBLE TRANSPORT

An important member of the Active8 team is our fully accessible minibus. This provides a lifeline to some of our members that wouldn't be able to attend Active8 events without it.

Along with supporting Active8 members we are able to support other like minded organisations from across Cornwall.

This year we have been able to support schools, community projects, churches, youth clubs, sports clubs and scouting groups.

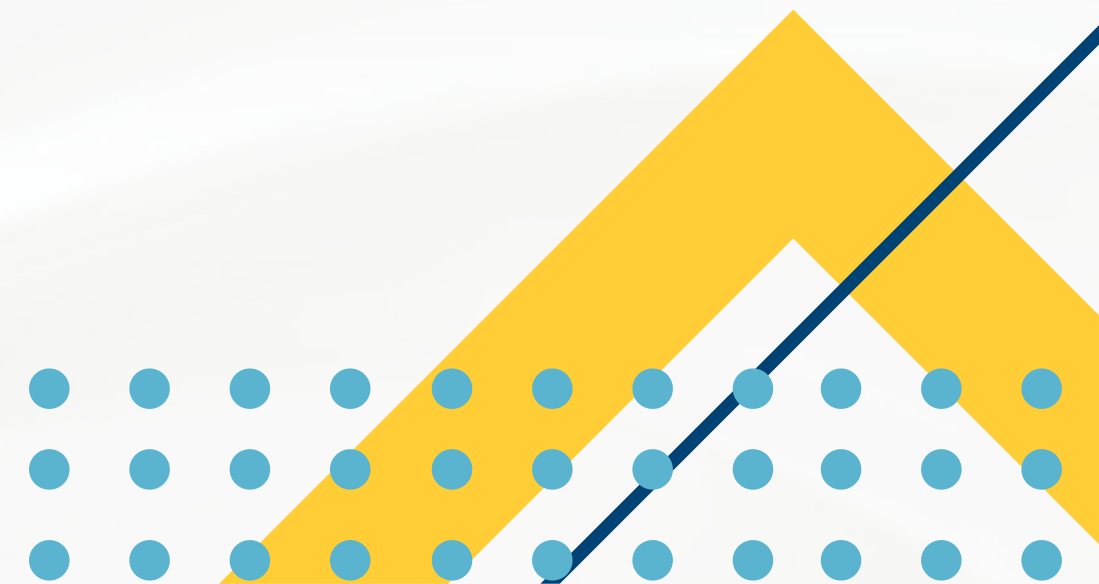
Without this not for profit, accessible transport available in Cornwall our local community would struggle to attend these lifechanging and aspirational events.



OTHER ACHIEVEMENTS

We are also very proud to have been involved in:

- A Royal visit from the Duchess of Edinburgh
- Nomination for the Kings Award for Voluntary Services
- The opening of the Liz Olive garden by Cornwall Rural Housing Association
- Continued involvement in the Cornwall Disability Alliance
- Run two brilliant family and friends events
- Run one of the only accessible minibuses in the North of Cornwall
- Continue to offer amazing opportunities and life changing experiences to our members



ORGANISATIONAL STRUCTURE

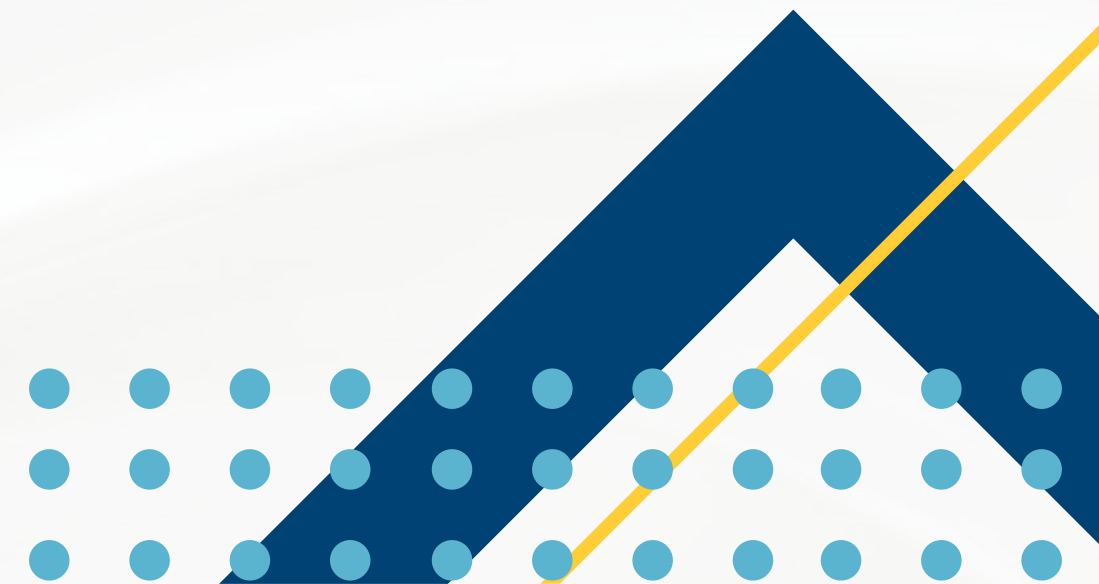
STAFFING

Over 2024-2025 our team of 5 have grown into their roles with Tom and Clare celebrating their first year with the charity.

Lindsey continues to provide support to staff and members and is thriving with the Acceler8 group. Lindsey celebrated 5 years of working for Active8 in January 2025 and we look forward to her continuing to grow in her role and developing the charity for years to come.

Stacey has flourished in her adapted role supporting on Acceler8 and Illumin8 events, running the mentoring programme and organising the family and friends events.

John continues to lead the charity on its aims and looks to develop the charity in the coming years. In March John celebrated 15 years of involved with Active8 and in June 2025 celebrated 10 years of employment with the charity.



TRUSTEES

Mrs Anne Jeffery - Chair of Trustees

Mr Mark Stevens - Deputy Chair of Trustees & Safeguarding

Mr Paul Staniland - Treasurer

Ms Felicity Gibbins – wellbeing

Ms Cheryl Everitt – voice of a parent

Mr Mark Curtis – legal, technology and GDPR

Ms Chloe Walker

Newly appointed

Ms Alison Thomas - GDPR & Data Protection - appointed Dec
2024

Mr James Ball - Aug 2025

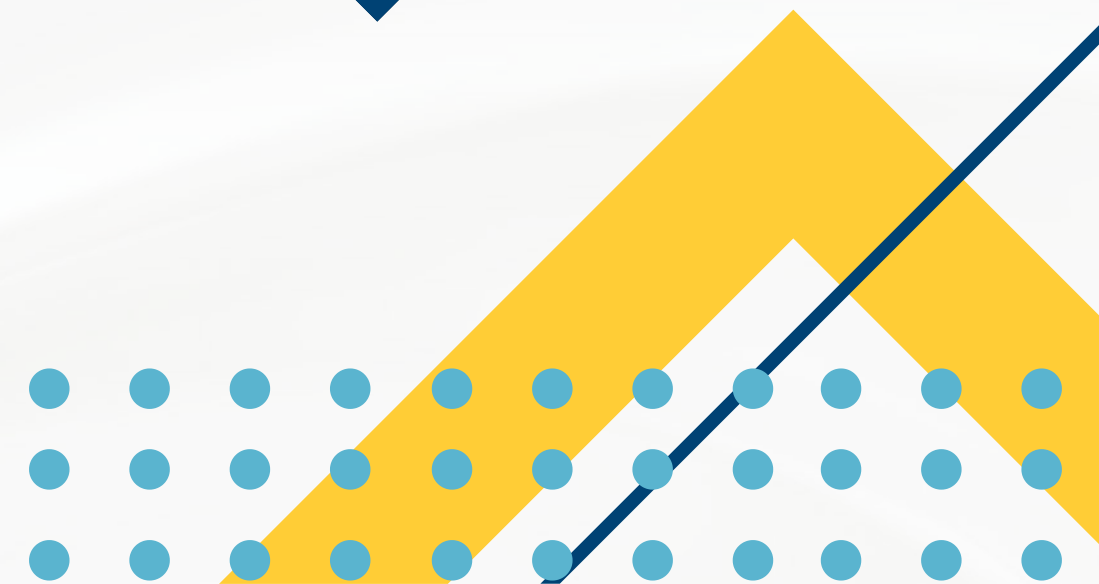
Ms Kelly McKernan - Sept 2025

Ms Laura Saunders - Sept 2025

Stepped down within the last 12 months:

Mrs Penny Monger - January 2025

Mr Julian Tyson - June 2025



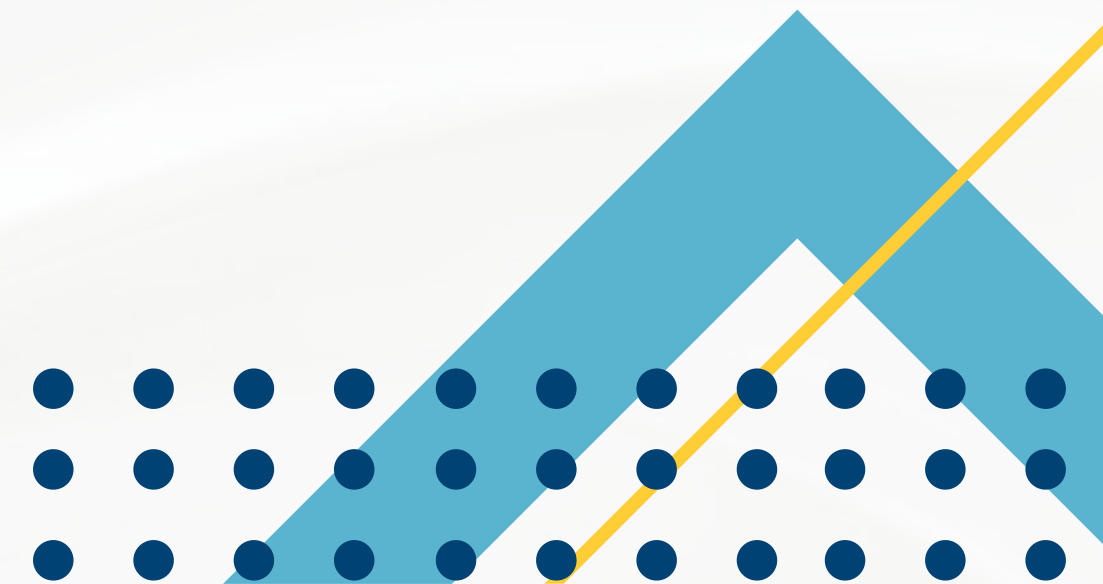
TRUSTEES CONTINUED

Active8 trustees are appointed by the existing trustees for 3 years of service. In selecting individuals for appointment by charity trustees, the trustees must have regard to the skills, knowledge and experience needed for the effective administration of the CIO.

Every trustee must be appointed by a resolution passed at a properly convened meeting of the charity trustees with 21 days' notice.

It is the responsibility of all trustees to operate within the agreed procedure when inviting new or re-electing trustees to ensure the safety of themselves and others, as well as representing the organisation in an appropriate manner.

It is the responsibility of the trustees to ensure the policy is adhered to and any issues are dealt with quickly to minimise the impact on others and the organisation.



FUNDRAISING

The past year has been a challenging time for fundraising, with rising costs, increased competition for charitable funding, and uncertainty around longer-term support for much-needed charitable programmes. Despite this difficult backdrop, Active8 has worked hard to adapt and respond with resilience and creativity. The appointment of a dedicated fundraiser has enabled us to focus our efforts more effectively and explore new opportunities to generate the essential income we need.

This renewed focus is already delivering tangible results, with a number of multi-year grants secured that are vital for sustainability and reducing financial risk to our core programmes. We are proud to have secured funding for our Acceler8 programme 2024-2026, with long-term contributions also achieved; including a two-year grant from National Global's Make Some Noise and funding from The Clare Milne Trust. Our priority now is to build on this momentum and secure additional, sustainable, ongoing support for 2026-2028 and beyond.

Our goal is to achieve five-year, funding commitments for Acceler8 – as we have successfully achieved for our Illumin8 programme – giving us the space to plan strategically, focus on other essential funding requirements, such as a new accessible minibus, and continue improving our delivery, impact, and reach.

We are deeply grateful for the generosity and commitment of our supporters, partners, and funders, whose belief in our mission is enabling Active8 to keep improving young disabled lives and plan confidently ahead for the future.



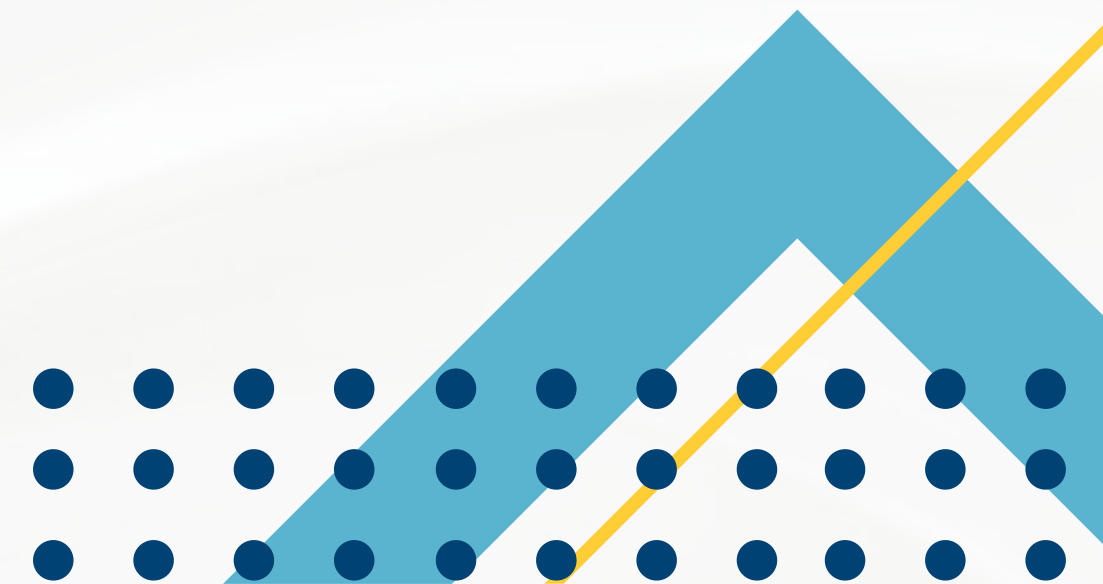
LOOKING TO THE FUTURE

Building on the progress already made, we identified and delivered our 2024 strategy plan prioritising of our five-year key strategic aims.

In 2024 the board of trustees have worked with members and staff to create the next strategy plan that the charity will work towards from 2025-2030. This is a working document and will evolve over the life of the document.

Using the various inputs and building on the organisation's strengths and opportunities, while addressing its weaknesses and external threats, Active8 has set the following five goals for the period 2025 – 2030:

1. Young people with physical disabilities in Cornwall are empowered to be self-advocates and their voices are heard within their community.
2. Active8 has the necessary human, material and financial resources to make the organisation sustainable.
3. Active8 has increased public awareness both locally and nationally
4. Active8 has access to reliable, cost-effective transport.
5. Active8 has access to an accessible building suitable for our needs



FINANCES

REVIEW OF RISK

The charity Trustees have considered the major risks to the charity and are satisfied that the systems and procedures in place manage those risks. At the Trustee meetings time is allocated to this and the charity has a risk register and strategy plan including a SWOT analysis to identify the major risks.

OVERVIEW

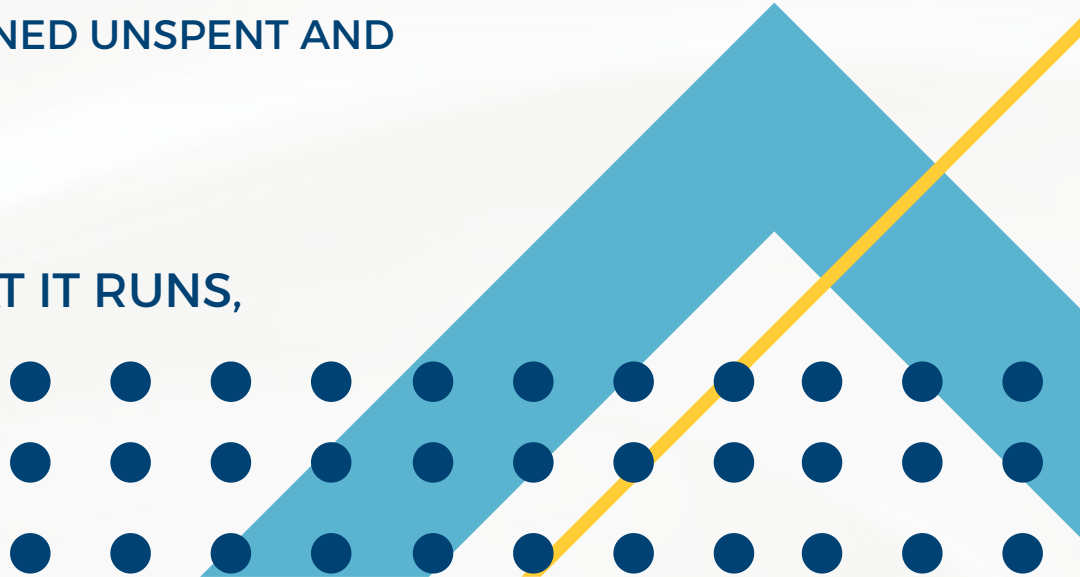
Active8 are committed to providing a reliable and consistent provision to its members. Therefore, we aim to have secured funding for each of the project cycles. The table below shows the funding situation at the end of the financial year 2024/25:

	Funding at 1st August 2024	Funding at 31st July 2025
Restricted		
Acceler8	£63,671	£28,500
Illumin8	£49,503	£24,401
Total	£113,174	£52,901
Unrestricted	£77,692	£99,600*
Total	£190,866	£152,501

*DONATIONS DURING THE YEAR INCLUDE £23,921 RAISED THROUGH A BIG GIVE CAMPAIGN. WHILST THESE WERE UNRESTRICTED, THE TRUSTEES HAVE AGREED TO ALLOCATE THESE FUNDS TO THE ACCELER8 PROGRAMME. AT THE END OF JULY 2025 £23,191 OF THESE FUNDS REMAINED UNSPENT AND INCLUDED WITHIN THE UNRESTRICTED FUNDS OF £99,600.

RESERVES

ACTIVE8 ENDEAVORS TO SECURE SUFFICIENT FUNDING TO COMPLETE THE CURRENT CYCLE OF PROJECTS THAT IT RUNS, ALLOCATING ITS UNRESTRICTED RESERVES TO MEET ANY TEMPORARY SHORTFALL. THE CHARITY ENSURES THAT £53,000 IS HELD IN UNRESTRICTED RESERVE AT ALL TIMES. ANY RESERVES HELD IN EXCESS OF THIS MINIMUM FIGURE WILL BE USED TO SUPPORT THE ONGOING MANAGEMENT OF THE CHARITY AND TO SUPPORT PROJECTS IN FUTURE PERIODS.



SIGNATORIES

Chair of Trustees - Anne Jeffery

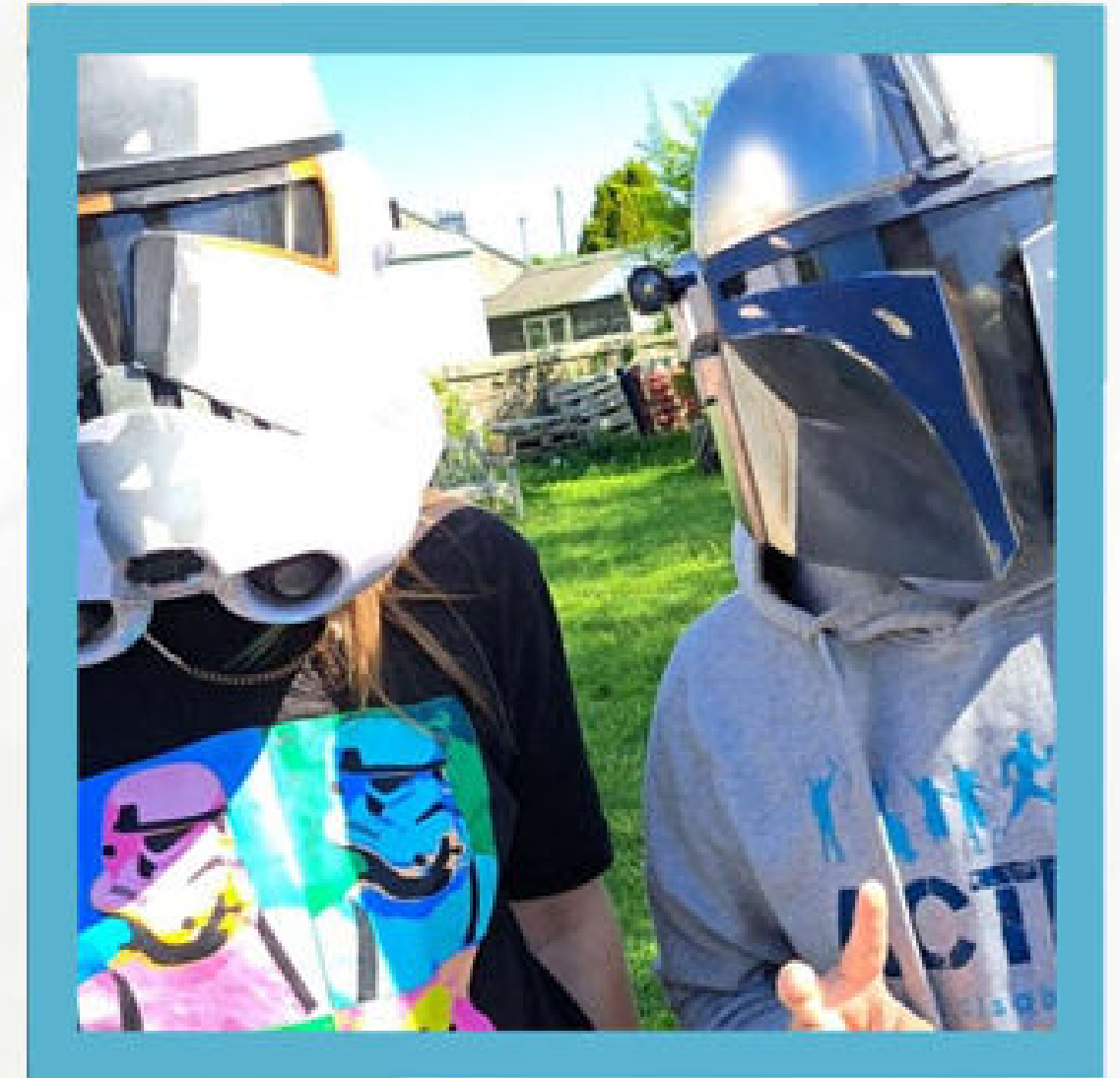
Anne Jeffery

Treasurer - Paul Staniland

Paul Staniland

Active8 CEO - John Sweeting

John Sweeting



Independent Examiner's Report to the Trustees of Active8

I report to the trustees on my examination of the accounts of the Active8 (the Trust) for the year ended 31 July 2025.

Responsibilities and basis of report

As the charity trustees of the Trust you are responsible for the preparation of the accounts in accordance with the requirements of the Charities Act 2011 ('the Act').

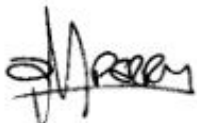
I report in respect of my examination of the Trust's accounts carried out under section 145 of the 2011 Act and in carrying out my examination I have followed all the applicable Directions given by the Charity Commission under section 145(5)(b) of the Act.

Independent examiner's statement

I have completed my examination. I can confirm that no material matters have come to my attention in connection with the examination giving me cause to believe that in any material respect:

- (1) accounting records were not kept in respect of the Trust as required by section 130 of the Act; or
- (2) the accounts do not accord with those records.

I have no concerns and have come across no other matters in connection with the examination to which attention should be drawn in this report in order to enable a proper understanding of the accounts to be reached.



Darren Perry BA (Hons) ACA DChA
Chartered Accountant

.....

Date: 27 November 2025

Francis Clark LLP
Lowin House
Tregolls Road
TRURO
TR1 2NA

Active8

Receipts and payments account for the year ended 31 July 2025

		2025		2024		
		£	£	£		
		Unrestricted	Restricted	Total		
Receipts						
Voluntary sources						
	Grant from National Lottery Community Fund	-	80,971	80,971		
	Grants from other associations and trusts	-	67,309	67,309		
	Fundraising	421	-	421		
	Donations and Gift Aid	32,926	-	32,926		
	Other Income	4,401	-	4,401		
		37,748	148,280	186,028		
Income from assets						
	Bank deposit interest	5,271	-	5,271		
Total receipts						
		43,019	148,280	191,299		
Payments						
Direct charitable expenditure						
	Youth delivery work	Activities	186	41,323	41,509	25,468
		Mentoring	-	7,272	7,272	-
		Care costs	-	19,274	19,274	-
		Accommodation	-	-	-	128
		Equipment, food and transport	3,450	4,718	8,168	7,613
	Staff wages & NI	Manager	3,351	36,284	39,635	39,993
		Fundraiser	5,837	11,712	17,549	13,701
		Youth Workers	1,008	71,607	72,615	43,607
	Staff expenses		1,250	6,797	8,047	6,387
	IT		438	1,911	2,349	1,927
	Communications		3	709	712	892
	Recruitment costs		-	-	-	1,222
			15,523	201,607	217,130	140,938
Other expenditure						
	Professional fees		2,158	-	2,158	1,799
	Independent examination fee		1,500	-	1,500	1,380
	Publicity		662	-	662	1,280
	Insurance		6	1,182	1,188	779
	Office rent and utilities		371	4,192	4,563	4,702
	Training		420	1,572	1,992	979
	General expenses		411	-	411	228
	Bank charges		60	-	60	60
			5,588	6,946	12,534	11,207
Total payments						
			21,111	208,553	229,664	152,145
(Deficit)/surplus for the year						
			21,908	(60,273)	(38,365)	77,530
Balances brought forward						
			77,692	113,174	190,866	113,336
Balances in hand at 31 July 2025						
			99,600	52,901	152,501	190,866

Statement of assets and liabilities at 31 July 2025

	2025 £	2024 £
Non monetary assets		
Capital vehicle assets costing £15,500 were purchased in 2022 with funds from the National Lottery Community Fund, relating to a minibus purchase.		
Monetary assets		
Cash and bank balances		
CAF bank	4,144	5,382
CAF deposit	15,842	15,000
Charity bank	47,476	85,409
United Trust bank	85,000	85,000
Expense accounts	-	-
Cash in hand	39	75
	<u>152,501</u>	<u>190,866</u>

Liabilities

At the 31st July 2025, payments of £1,454 were outstanding for employee and employer pension contributions, together with an accrual for Independent Examination fees of £1,650+VAT in respect of the year.

Restricted fund balances

Co-op	-	3,661
Dorota	-	1,082
Cornwall Community Fund	-	4,623
Cornwall Community Fund Clare Milne	10,000	-
Albert Van den Bergh	-	1,000
National Lottery Community Fund	-	20,000
Disability Cornwall	-	5,305
Whirlwind	-	5,000
Hedley Foundation	-	3,000
Cornwall Council	5,000	20,000
Cornwall Council Time2Move	-	-
Global Charities	13,500	-
National Lottery Community Fund	24,401	49,503
	<u>52,901</u>	<u>113,174</u>

The above statement of assets and liabilities and the attached receipts and payments account for the year ended 31 July 2025 are as approved by the Trustees

Anne Jeffery

ANNE JEFFERY
On behalf of the Trustees

Active8
Restricted Funds

	Total	Co-op	Dorota	Cornwall Community Fund	Cornwall Community Fund Tanner Phoenix	Cornwall Community Fund Clare Milne	A Van den Bergh	National Lottery Community Fund	Disability Cornwall	Whirlwind	Hedley Foundation	Cornwall Council	Cornwall Council Time2Move	Cornwall Council Care Costs	Global Charities	National Lottery Community Fund	Liz Olive Fund
Bfwd	113,174	3,661	1,082	4,623	-	-	1,000	20,000	5,305	5,000	3,000	20,000	-	-	-	49,503	-
Introduced in the year	148,280	-	-	-	3,000	10,000	1,000	-	7,660	-	-	500	5,000	16,649	13,500	80,971	10,000
Spent in the year	(208,553)	(3,661)	(1,082)	(4,623)	(3,000)	-	(2,000)	(20,000)	(12,965)	(5,000)	(3,000)	(15,500)	(5,000)	(16,649)	-	(106,073)	(10,000)
Cfwd	52,901	-	-	-	-	10,000	-	-	-	-	-	5,000	-	-	13,500	24,401	-
		Acceler8	Acceler8	Acceler8	Acceler8	Acceler8	Acceler8	Acceler8	Acceler8	Acceler8	Acceler8	Acceler8	Acceler8	Acceler8	Acceler8	Illuimin8	Active 8

Related Party Transactions

Due to the nature of the charity's operations and some members of the board being involved in the organisation's charitable activity, transactions may take place with the organisations and individuals in which a member of the Board of Trustees may have an interest. All transactions involving such organisations are conducted at arms length and in accordance with the charity's financial regulations and normal procurement procedures.

Income related party transactions

During the year the charity received unrestricted donations to the value of £3,120 (2024: £3,522) from 1 (2024:7) trustee.

Expenses related party transactions

During this and the previous year the charity did not make any reimbursement of expenses to trustees.

Active8
Restricted Funds

Breakdown

Costs allocated to Funds based on a pro rata spend by cost type in the Project they were given to

		Total	Co-op	Dorota	Cornwall Community Fund	Cornwall Community Fund Tanner Phoenix	Cornwall Community Fund Clare Milne	A Van den Bergh	National Lottery Community Fund	Disability Cornwall	Whirlwind	Hedley Foundation	Cornwall Council	Cornwall Council Time2Move	Cornwall Council Care Costs	Global Charities	National Lottery Community Fund	Liz Olive Fund
Spent in the year		208,553	3,661	1,082	4,623	3,000	-	2,000	20,000	12,965	5,000	3,000	15,500	5,000	16,649	-	106,073	10,000
Youth Work Delivery	Activities	41,323	931	275	1,175	763	-	508	84	8,296	1,271	763	3,940	1,271	-	-	22,048	-
	Mentoring	7,272	-	-	-	-	-	-	-	-	-	-	-	-	-	-	7,272	-
	Care costs	19,274	-	-	-	-	-	-	-	-	-	-	-	-	16,649	-	2,625	-
	Equipment, food and transport	4,718	97	29	122	79	-	53	528	343	132	79	410	132	-	-	2,714	-
Staff wages & NI	Manager	36,284	631	187	797	517	-	345	3,449	2,236	862	517	2,673	862	-	-	13,205	10,000
	Fundraiser	11,712	-	-	-	-	-	-	-	-	-	-	-	-	-	-	11,712	-
	Youth Workers	71,607	1,642	485	2,073	1,345	-	897	13,968	813	2,242	1,345	6,950	2,242	-	-	37,605	-
Staff expenses		6,797	169	50	213	139	-	92	923	599	231	139	716	231	-	-	3,296	-
IT		1,911	20	6	25	16	-	11	108	70	27	16	84	27	-	-	1,501	-
Communications		709	17	5	22	14	-	9	95	61	24	14	73	24	-	-	350	-
Insurance		1,182	28	8	36	23	-	16	155	101	39	23	120	39	-	-	594	-
Office rent and utilities		4,192	101	30	127	83	-	55	550	357	138	83	426	138	-	-	2,106	-
Training		1,572	25	8	32	21	-	14	139	90	35	21	108	35	-	-	1,045	-
		208,553	3,661	1,082	4,623	3,000	-	2,000	20,000	12,965	5,000	3,000	15,500	5,000	16,649	-	106,073	10,000

REFERENCE AND ADMINISTRATION INFORMATION

Charity name: Active8

Registered number 1163942, first registered 12th October 2015.

Registered Charity address & Office Address: Active8, B108 Beacon Place, Station Approach, Victoria, St Austell, PL26 8LG.

Nature of governing document Charitable Incorporated Organisation (CIO) – Foundation Trust Registered 12 Oct 2015 (a copy can be provided upon request).

Bankers

CAF Bank Limited, 25, Kings Hill Avenue, Kings Hill, West Malling, Kent, ME19 4JQ.

The Charity Bank Limited, Fosse House, 182 High Street, Tonbridge, Kent, TN9 1BE.

United Trust Bank, One Ropemaker Street, London, EC2Y 9AW.

Independent Examiner

Francis Clark LLP, Lowin House, Tregolls Road, Truro, Cornwall TR1 2NA.

