



RIVER HOLME
CONNECTIONS



Annual Report 2023

www.riverholmeconnections.org

Chair's Report



Lynva Russell, Chair

Water quality has been at the heart of our work since we were founded in 2015. A healthy river should be clean of physical and chemical pollutants, well oxygenated and free-flowing to give a variety of physical features including meanders, quiet pools and shallow rapids. We are trying to restore our rivers and streams to this natural state. This is good for wildlife and good for us. Most of the rivers in the UK are not in a good state at all, and no rivers in the country were classed as in good health in the last Environment Agency survey (2020). (www.wcl.org.uk/not-one-river-in-england-in-good-health.asp).

We work with a variety of partners to monitor and ultimately improve the water quality in the Holme catchment. We have a team of volunteers who collect samples of river invertebrates once a month (from spring through to autumn) from various places in the catchment and record what they find. The types and numbers of invertebrates such as caddisflies and freshwater shrimps tell an important story, and these records add to a bigger picture. The records which have been collected since 2010 are stored on the Calder Rivers Trust database, which in turn is part of the national Riverfly Partnership. We'll be expanding our monitoring work going forward to include chemical tests, including nitrates and phosphates.

We are also working with the University of York on their Ecomix research. This scheme is

introducing a testing programme for new and different chemicals. For example, it has been found that a chemical called fipronil is widespread in our rivers. Fipronil is a commonly used flea product for pets but it degrades into compounds that are more persistent and more toxic to insects, seriously damaging our waterways.

With the wetter winters we have experienced recently and which are likely to increase in the future there has been a significant increase in surface water runoff into drains and rivers. This will include rubber from tyres, heavy metals from catalytic convertors, mud and other pollutants. Less than 30% of pipes that empty in to the rivers belong to Yorkshire Water. Other trends are also increasing this runoff including the many new houses that need to be built on previously green spaces and an increase in tarmacked gardens to help with off road parking.

As well as our monitoring and educational work, we are engaging with more businesses and continuing to carry out physical improvements to help nature help us. Over the next few years this will include creating eight new meadows, 22km of new hedges, a number of woodlands and four new wetlands. Stopping green waste being dumped, stopping litter being dropped and thinking about our own garden management – we can all do a bit. Nature is important to us all, let's help it out.

Lynva Russell, Chair





Supporting Healthy Rivers



Riverfly Sampling

Clean water is a vital resource for all living things. A clean and healthy river supports a wide range of species and it provides us with clean water to drink and bathe in. Clean rivers help boost mental and physical health and they provide an amazing space to enjoy the outdoors. We carry out a wide range of work to help improve water quality in the Holme catchment.



Process Packaging Volunteers

Our volunteers regularly monitor river invertebrates. These invertebrates are very good indicators of the water quality in the river.

- Recorded eight groups of invertebrates across 12 sites – 9,953 invertebrates were recorded and 58 reports submitted
- Trained seven new volunteers
- Added four new monitoring sites

Other water quality work:

- Carried out 24 river clean-ups in 2023 and collected over 80 bags of litter
- Our Green waste and Yellow fish projects helped raise awareness of pollution issues
- We regularly report environmental incidents (pollution issues) to the local Environment Agency team



Looking forward

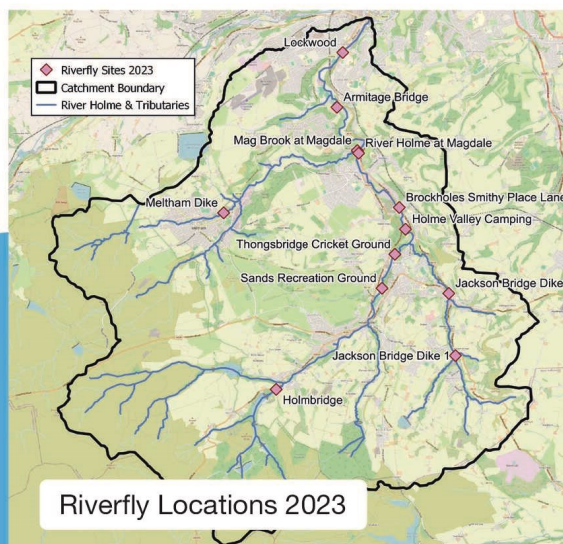
- Train more riverfly volunteers and add new monitoring sites
- Set up a new chemical water quality monitoring programme in the catchment
- Continue with our river clean-up work
- Continue to work with the Environment Agency to improve water quality in the catchment



Riverfly Training

"I enjoy having an active part in monitoring the river quality and helping to improve the local river and environment. Riverfly volunteering allows adults to re-find their inner child. It is a scientific version of pond dipping, and there is always a sense of excitement to see what you've collected in a kick sample."

- Helen S, Riverfly volunteer



Riverfly Locations 2023

Please call the Environment Agency incident hotline to report Environmental incidents such as pollution events and fish kills.

Telephone: 0800 80 70 60 (24-hour service)



Improving Biodiversity



Six-spot Burnet, Pye Flatts

There are many opportunities across our catchment to improve biodiversity. For example, RHC is leading Nature's Holme, one of 22 pilot projects funded by the Department for Environment, Food and Rural Affairs (Defra), to develop a range of conservation actions across multiple landowners.

Progress this year

- Created 3.6km of hedgerows and planted 24,929 trees
- Carried out Japanese Knotweed control work along 21km of river
- Himalayan balsam control work was carried out along more than 4km of river
- Thirty people attended our family nature walk at Magdale, Honley and a kingfisher was spotted flying down the river corridor, a fantastic treat for families to see
- Completed water vole signs and habitat suitability survey

Looking forward

- Develop plans for the reintroduction of water voles in the upper catchment
- Create or enhance 2.5 ha of wildflower hay meadows
- Begin to implement the plans developed for the Nature's Holme project (see infographic)
- Continue planting trees and hedges – the aim is to reach 100,000 trees planted in total since RHC was established, we're close!



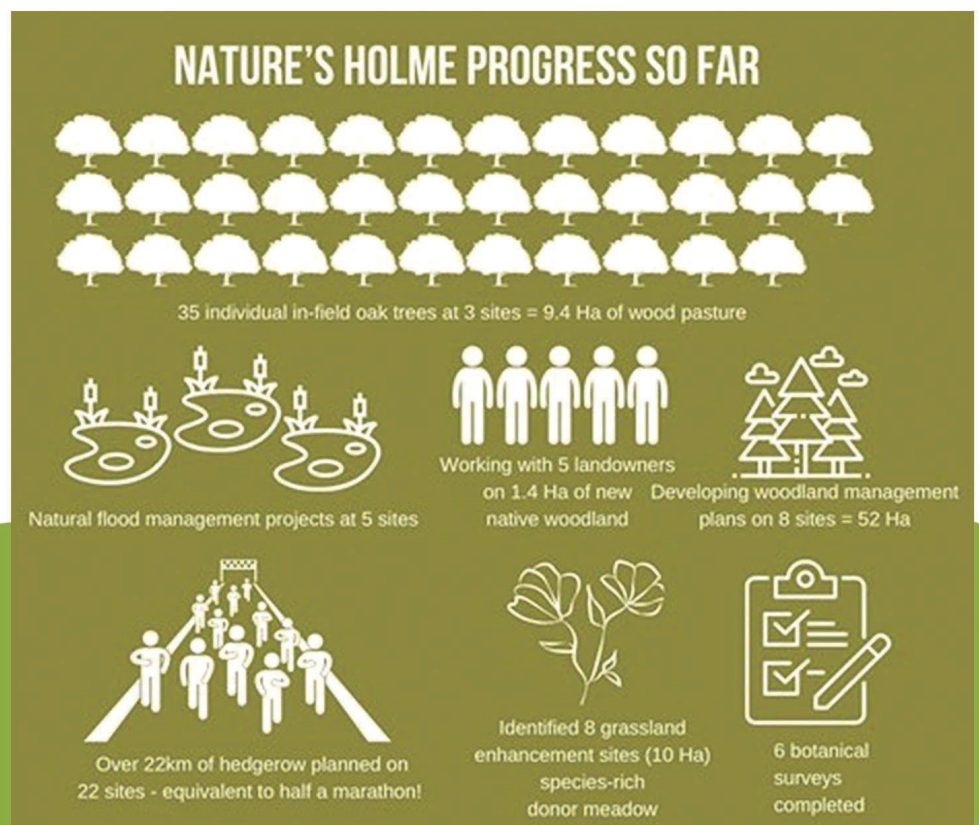
Tree planting at Holmroyd Nook, Netherthong



Water vole

"The UK is now one of the most nature-depleted countries on Earth. But the reasons for the decline are clear and we know conservation actions deliver results for nature."

State of Nature Report 2023





Accessible Riversides



Finger Post Installation in Honley

Improving access throughout the Holme catchment is an important part of our work. Connecting people with the river and the wildlife along it is key to improving and conserving our watercourses. Our biggest project to make the riverside more accessible is the Riverside Way – a 15.5km footpath stretching from Digley Reservoir near Holme village downstream to Snow Island in Huddersfield.

Achievements in 2023

- Ten new waymarker posts installed along the Riverside Way
- Improved 3.7km of paths including resurfacing a section along the Spa Wood, resurfacing behind the Cattle Market in Holmfirth and replacing the boardwalk in the woodland above Thongsbridge Recreation Ground
- Gathered stakeholder feedback on potential routes which could be made fully accessible
- Forty people joined our walks and talks along the Riverside Way



Looking forward to 2024

- Clear up sections of the Riverside Way and cut back encroaching vegetation
- Work with Experience Community to identify routes in the Holme catchment that can be made fully accessible
- Develop Riverside Way Phase II to deliver further improvement work

Cattle Market – revetment boards and resurfacing

“Great job! This is my walk to work. It was getting a little treacherous there so was delighted to see the embankment shored up and the new surfacing. Love it.”



Resurfacing behind Holmfirth Cattle Market

Flexipave at Spa Wood

“I walked on this yesterday it’s a great improvement on the muddy puddles! Thank you for the great work.”



Flexipave at Spa Wood



Digley to Magdale Walk



Engagement and Education



Holme Valley Camping River Session

Engaging with young people is vital for us as it involves young people in conservation and nature, helping them to find out what is on their doorstep and how they can help to support their local environment.

Achievements in 2023

- Visited nine primary schools and 1,014 pupils took part in our sessions
- At River Explorer sessions children learnt about river bugs, their importance in the river and took part in fun educational river and nature activities
- In our Mayfly in the Classroom sessions, pupils learnt about the mayfly lifecycle, the food chain and river quality
- Seven scout groups participated in River Explorer sessions, tree planting and Himalayan balsam bashing
- Greenhead College, Kirklees College and Honley Cubs helped to plant trees
- Attended six local community events
- Held four Nature's Holme events for stakeholders and landowners to inform our future work

Looking forward to 2024

- Increase the number of primary schools involved in our education programme (from 9 in 2023 to 12 in 2024)



Nature's Holme Landowner Event

- Increase the number of Scout groups involved in educational activities
- Nature's Holme Landowner Events to discuss surveys and an update on the achievements and plans for the remainder of the development phase
- Consultation work to develop a plan for a river festival promoting Nature's Holme
- Develop a Nature's Holme Conference



Brockfest



Sangam Mela

"A big thank you for coming to cubs last week with the river bugs and activities. It was very good, and the cubs were really engaged with the activities. Thank you for all your hard work."

– Carolyn, Holmfirth Cubs





Our Volunteers



Bottoms Mill to Holmbridge volunteers

We have a dedicated and hardworking bunch of volunteers at River Holme Connections, who continue to amaze us with their support and enthusiasm for creating a better River Holme and a better Holme Valley. Their work contributes to a variety of projects every year.



Sands Balsam Bashing



Pontey Farm-Miry Lane hedge planting

Achievements in 2023

- Volunteers contributed an additional 5,412 hours of work
- Volunteers from industry contributed 316 hours of our total volunteer time, allowing us to expand our Invasive Non-Native Species (INNS) control to new sites, and get even more trees in the ground
- Volunteers help with administration, to run events and deliver education programmes
- Volunteers spent 179 hours being trained in areas such as riverfly monitoring, brushcutting, safe application of pesticides, habitat surveying, and first aid

Looking forward

In 2024 we hope to continue working with our volunteers so we can:

- Deliver more conservation projects, including the creation of new meadows
- Expand our INNS work to the Meltham area
- Upskill our volunteers with training courses e.g. hedgelaying
- Involve more corporate groups in our projects
- Attract more volunteers who are enthusiastic about improving their local wildlife areas

"I love doing volunteering work with River Holme Connections as it gives me a sense of purpose and achievement, physical exercise and connection with like-minded people."
- Sue H, volunteer

"What's not to like about being a small cog in the River Holme Connections machine, helping in the physical and visual improvements in the area I love to walk and cycle in, whilst working with a great group of like-minded volunteers."
- Dennis S, volunteer

"Volunteering with RHC gives me a great opportunity to really improve the valley environment, and to meet up with a diverse and entertaining team - it doesn't rain every time!"
- Ian I, volunteer

Volunteer questionnaire in Jan 2024

Most important to volunteers when they are involved with RHC	
To improve the local environment	84.85%
To make a difference in your local community	69.70%
Increases my sense of being able to make positive change	84.85%
Increases my feeling of being part of the community	78.79%



Our Partners

We have continued to strengthen our strategic partnerships with organisations and communities that are vital to our work. This joined up and co-ordinated approach makes a real difference to the rivers in our catchment and beyond.



Shelterbelt at Longley Farm with MCC Digital, Jamf and OtterBox

Achievements in 2023

- Active member of the Calder Catchment Partnership which is a community-led approach that engages people and groups from across society to help improve our precious water environments
- Work collaboratively with more than 20 organisations - working together towards common goals enables us to play an effective role in improving the whole river system
- Work with more than 100 landowners and several local businesses



In river litter pick with Central Co-op Food

Looking forward to 2024

- Continue to foster new partnerships to achieve more for the environment
- Plan to work with more landowners and businesses in the Holme Valley to achieve our aims
- Working to promote natural flood management techniques with the Integrated Catchment Solutions Programme (iCASP)



Litter pick and Balsam bash with Central Co-op Food

"It's great to work in partnership with River Holme Connections. Year on year they do more vital work to improve the environment of the Holme valley. Calder Rivers Trust is proud to work alongside RHC"

- Dr Andy Bray, General Manager, Calder Rivers Trust



Calder Catchment Partnership Meeting

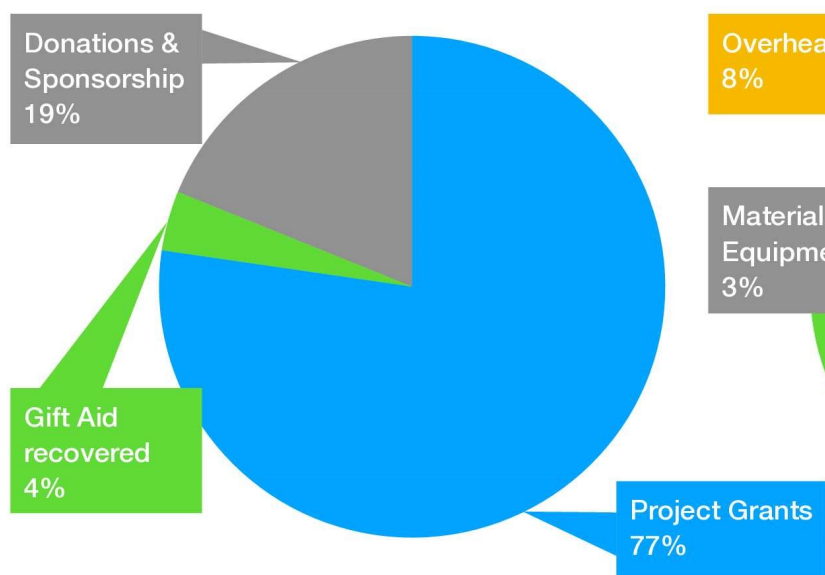
Finances



This year River Holme Connections continued to work on many projects to improve the river and its environs but it also took on a new and significant pilot project working with DEFRA on Nature's Holme - a Landscape Recovery Project. This meant significant investment from

Income in 2023

Income was £330,729 (26% more than in 2022) which was mainly due to funding for Nature's Holme.

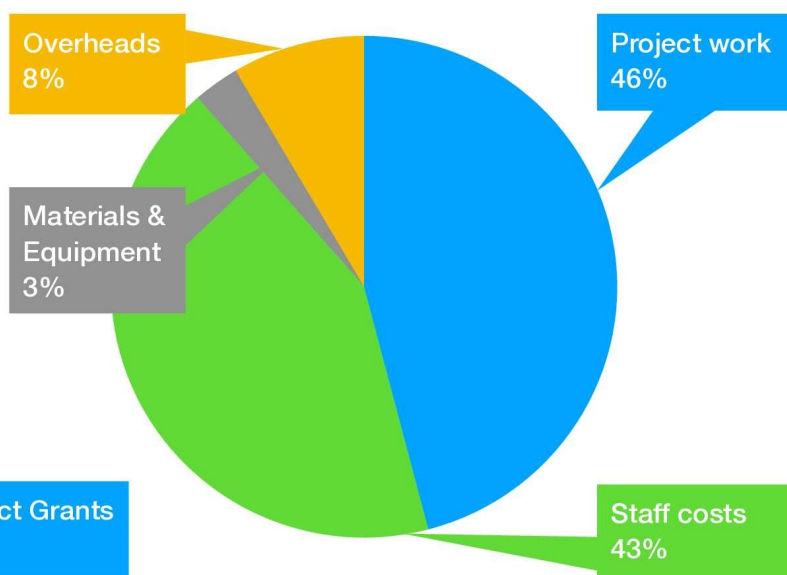


Income	
Project Grants	£255,707
Gift Aid recovered	£12,726
Donations & Sponsorship	£62,296
Total income	£330,729

the charity to grow the staff team, invest in new equipment and more office space. As a result, the charity has had to use some of its reserves to set up Nature's Holme and progress it quickly. However, River Holme Connections remains in a strong financial position at the end of 2023.

Expenditure in 2023

Expenditure was £333,316 (88% more than in 2022) and a large part of this was due to an increase in costs associated with Nature's Holme.



Expenditure	
Project work	£153,015
Staff costs	£142,215
Materials & Equipment	£9,837
Overheads	£28,249
Total expenses	£333,316

A full set of accounts is available to view at the River Holme Connections office.
Please call 01484 661756 to arrange an appointment.



RIVER HOLME
CONNECTIONS



River Holme Connections

Unit 4 Honley Business Hub

13/15 Westgate

Honley

West Yorkshire

HD9 6AA

Tel: 01484 661756

Email: info@riverholmeconnections.org

www.riverholmeconnections.org



@riverholmeconnections



@holmeriver



@riverholmeconnect

Charity registration number 1163873

Company Registration Number - CE004500

The Charity Registration Number is :- 1163873

River Holme Connections

Report and Accounts

31 December 2023

River Holme Connections

Company Registration Number - CE004500

Trustees' Annual Report for the year ended 31 December 2023

The Trustees present their Report and Accounts for the year ended 31 December 2023, which also comprises the Directors' Report required by the Companies Act 2006.

Reference and administrative details

The charity name

The legal name of the charity is:- River Holme Connections.

The charity's areas operation and UK charitable registration

The charity is registered in England & Wales with the Charity Commission in England & Wales (CCEW) with charity number 1163873.

The charity does not operate in any overseas jurisdictions.

Legal structure of the charity

The charity is constituted as a company limited by guarantee, registered under the Companies Acts. The governing document of the charity is the Memorandum and Articles of Association establishing the company under company legislation.

There are no restrictions in the governing documents on the operation of the Charity or on its investment powers other than those imposed by Charity Law.

By operation of law all trustees are directors under the Companies Act 2006 and all directors are trustees under Charities legislation and have responsibilities, as such, under both company and charity legislation.

The trustees are all individuals.

River Holme Connections

Company Registration Number - CE004500

Trustees' Annual Report for the year ended 31 December 2023

The principal operating address, telephone number, email and web addresses of the charity are:-

Unit 4, Honley Business Hub
13/15 Westgate, Honley
West Yorkshire, HD9 6AA
Telephone 01484 661756
Email Address admin@riverholmeconnections.org
Web address www.riverholmeconnections.org

The Trustees in office on the date the report was approved were:-

C Abell
A Barraclough
P Coleman
C Green
C Hallas
P King
S Lee-Richards, Honorary Secretary and Treasurer
L Russell, Chair of Trustees

The following Trustees stepped down during the year:

M Dolton - stepped down at AGM in April 23
R Walker - stepped down in October 23

The following new Trustees were welcomed to the Board at the AGM in April 23:

C Abell
A Barraclough

River Holme Connections

Company Registration Number - CE004500

Trustees' Annual Report for the year ended 31 December 2023

The purposes of the charity as set out in its governing document

River Holme Connections has two objects: (1) To promote, for the benefit of the public, the conservation, protection and improvement of the physical and natural environment of the River Holme corridor and the surrounding area. (2) To advance the education of the public in the conservation, protection and improvement of the physical and natural environment of the River Holme corridor and the surrounding area. The charity can also carry out such charitable works as are in accordance with the approved objects set out in section 33(2) of the landfill tax regulations 1996 (amended).

The main activities undertaken in relation to those purposes in the year

The principal activities undertaken by River Holme Connections were: (1) Practical environmental improvements. (2) Educational activities concerning the environment. (3) Contract work with local businesses to improve the riverside environment.

The main activities undertaken during the year to further the charity's purpose for the public benefit

Ongoing work to control and reduce the incidence of non-native invasive species, such as Japanese knotweed (21km of river treated) and Himalayan balsam (3.7km). Over 24929 trees were planted in 2023, 4th year in the 'Year in Industry' student placement programme.

The trustees have had regard to the Charity Commission's guidance on public benefit in managing the activities of the charity.

Fundraising activities during the year

The charity raises funds through: (1) The application to charitable trusts for funding. (2) The securing of donations for the treatment of invasive species, such as Japanese knotweed. (3) Grants to plant trees and hedges. (4) Grants and donations to improve habitats and increase biodiversity.

The difference the charity's performance during the year has made to the beneficiaries of the charity.

Funds were secured in 2021 and 2022 to carry out the Riverside Way project to remediate the path, upgrade access and raise awareness of its existence among the general public. Phase 1 Riverside Way was completed during 2023.

The degree to which the achievements and performance during the year have benefitted wider society

Japanese knotweed treatment has improved water quality and biodiversity in the catchment. Tree and hedge planting projects have contributed to natural flood management and carbon sequestration.

River Holme Connections

Company Registration Number - CE004500

Trustees' Annual Report for the year ended 31 December 2023

Contribution of volunteers

We have a dedicated and hardworking bunch of volunteers at River Holme Connections, who continue to amaze us with their support and enthusiasm for creating a better River Holme and a better Holme Valley. Their work contributes to a variety of projects every year. Volunteers contributed an additional 5,412 hours of work.

Structure, governance and management of the charity

The methods used to recruit and appoint new charity trustees

New trustees are recruited and co-opted on to the board by the existing trustees. The trustees have an on-going commitment to seeking out individuals who could strengthen the Board and bring complimentary skills to the team. A basic skills audit of the trustees is undertaken on an annual basis, in order to match the existing skills of trustees against the needs of the charity.

Prospective new trustees are given an introduction to the aims and objectives of the charity by the Chair of the Board and attend a Board meeting as observers before becoming trustees. After joining the Board, new trustees receive training on the role and responsibilities of trustees, delivered by members of the Board. They also meet with the Company Secretary for a detailed discussion on the charity's activities. The training needs of trustees are continually evaluated by the Board.

River Holme Connections

Company Registration Number - CE004500

Trustees' Annual Report for the year ended 31 December 2023

Financial review

The charity's financial position at the end of the year ended 31 December 2023

The financial position of the charity at 31 December 2023 and comparatives for the prior period can be summarised as follows:-

	2023	2022
	£	£
Net income	(2,587)	87,084
Total Unrestricted Funds	136,172	134,943
Restricted Revenue Funds	107,755	111,570
Restricted Fixed Asset Funds	-	-
Total Funds	243,927	246,513

Financial review of the position at the reporting date, 31 December 2023

The trustees consider the financial performance by the charity during the year to have been satisfactory, in that: (1) Sufficient money was obtained to the obligations of the charity to its funders. (2) Adequate unrestricted funds are available to enable River Holme Connections to take advantage of new opportunities.

Policies on reserves

The level of reserves is subject to annual review. River Holme Connections ensures that it has sufficient reserves available to cover the core budget and river stewardship costs of the charity for three months. This is an event of the charity needing to cease to be a going concern.

Availability and adequacy of assets of each of the funds

The board of trustees is satisfied that the charity's assets in each fund are available and adequate to fulfil its obligations in respect of each fund.

River Holme Connections

Company Registration Number - CE004500

Trustees' Annual Report for the year ended 31 December 2023

Details of the Independent Examiner

Pierrepont Accountants

Member of Member of The Association of Chartered Management Accountants

Meltham Carlile Institute
Huddersfield Road
Meltham
West Yorkshire
HD9 4AE

Statement of the Directors ' and Trustees' Responsibilities

The charity's trustees are responsible for the preparation of the accounts in accordance with the terms of the Companies Act 2006, the Charities Act 2011 and the Charities (Accounts and Reports) Regulations 2008. Notwithstanding the explicit requirement in the extant statutory regulations, the Charities (Accounts and Reports) Regulations 2008, to prepare the financial statements in accordance with the SORP 2005, in view of the fact that the SORP 2005 has been withdrawn, the Trustees determined to interpret this responsibility as requiring them to follow current best practice and prepare the accounts according to the FRS 102 SORP (Statement of Recommended Practice for Accounting and Reporting by Charities) 2019, applicable to all accounting periods beginning on or after 1st January 2019), (The SORP), .

In particular, the Companies Act 2006 and charity law require the Board of Trustees to prepare financial statements for each financial year which give a true and fair view of the state of affairs of the charity as at the end of the financial year and of the surplus or deficit of the charity. In preparing those financial statements the Board is required to :-

- to prepare the accounts in accordance with United Kingdom Generally Accepted Accounting Practice (United Kingdom Accounting Standards and applicable law).
- select suitable accounting policies and apply them consistently;
- make judgements and estimates that are reasonable and prudent;
- prepare the financial statements on the going concern basis unless it is inappropriate to presume that the charity will continue in business;
- state whether applicable accounting standards and statements of recommended practice have been followed, subject to any material departures disclosed and explained in the financial statements;

The law requires that the trustees must not approve the accounts unless they are satisfied that they give a true and fair view of the state of affairs of the charity and of the surplus or deficit of the charity for the year.

River Holme Connections

Company Registration Number - CE004500

Trustees' Annual Report for the year ended 31 December 2023

The Trustees are also responsible for maintaining adequate accounting records which disclose with reasonable accuracy at any time the financial position of the charity and which are sufficient to show and explain the charity's transactions and enable them to ensure that the financial statements comply with the Companies Act 2006 and comply with regulations made under the Charities Act. They are also responsible for safeguarding the assets of the charity and hence for taking reasonable steps for the prevention and detection of fraud and other irregularities.

The Trustees are also responsible for the contents of the Trustees' report, and the accountant preparing the accounts has no responsibilities in relation to the Trustees' report.

The financial statements are set out on pages 10 to 29.

The financial statements have been prepared implementing the FRS 102 SORP (Statement of Recommended Practice for Accounting and Reporting by Charities) 2019, applicable to all accounting periods beginning on or after 1st January 2019), (The SORP), and in accordance with the Financial Reporting Standard 102, (effective 1st January 2016)

These financial statements have been prepared in accordance with the provisions in Part 15 of the Companies Act 2006. applicable to companies subject to the small companies regime.

This report was approved by the Board of Trustees on 10 April 2024.



S LEE-RICHARDS
Honorary Secretary and Treasurer

River Holme Connections

Report of the Independent Examiner to the Trustees of the charitable company on the accounts for the year ended 31 December 2023

I report to the Trustees on my examination of the financial statements of the charitable company on pages 10 to 29 for the year ended 31 December 2023 which have been prepared in accordance with the Charities Act 2011 (the Act) and with the Financial Reporting Standard 102, (effective 1st January 2016) as modified by FRS 102 SORP (Statement of Recommended Practice for Accounting and Reporting by Charities) 2019, applicable to all accounting periods beginning on or after 1st January 2019), (The SORP), published by the Charity Commission in England & Wales (CCEW) , and under the historical cost convention and the accounting policies set out on page 17.

Respective responsibilities of the Trustees and the Independent Examiner and the basis of the report

As described on page 6, you, the charitable company's Trustees, who are also the Directors of the Company for the purposes of Company law, are responsible for the preparation of the financial statements in accordance with the Companies Act 2006, the Charities Act 2011 and all other applicable law and with United Kingdom Generally Accepted Accounting Practice, applicable to smaller entities, and for being satisfied that the financial statements give a true and fair view.

The Trustees consider that the audit requirement of Section 144(1) of the Charities Act 2011 (the Act) does not apply, and that there is no requirement in the memorandum and articles of the charity for the conducting of an audit, and that the accounts do not require an audit in accordance with Part 16 of the Companies Act 2006 and that no member or members have requested an audit pursuant to Section 476 of the Companies Act 2006. The Trustees also consider the charitable company to be exempt from the requirement to be subject to Independent Examination.

Having satisfied myself that the financial statements are not required to be audited under any legal provision, or otherwise, and are eligible for independent examination, it is my responsibility to:-

- a) examine the financial statements of the charity under Section 145 of the Act;
- b) follow the applicable procedures in the Directions given by the Charity Commission under section 145(5)(b) of the Act.

Basis of Independent Examiner's Statement and scope of work undertaken

I report in respect of my examination of the charity's financial statements carried out under s145 of the Act. In carrying out my examination, I have followed all the applicable Directions given by the Charity Commission under section 145(5)(b) of the Act setting out the duties of an independent examiner in relation to the conducting of an independent examination. An independent examination includes a review of the accounting records kept by the charitable company and of the accounting systems employed by the charitable company and a comparison of the financial statements presented with those records. It also includes consideration of any unusual items or disclosures in the financial statements, and seeking explanations from you, as Trustees, concerning such matters. The purpose of the examination is to establish as far as possible that there have been no breaches of charity legislation and that, on a test basis of evidence relevant to the amounts and disclosures made, the financial statements comply with the SORP.

The procedures undertaken do not provide all the evidence that would be required in an audit, and information supplied by the Trustees in the course of the examination is not subjected to audit tests or enquiries and does not cover all the matters that an auditor would consider in arriving at an opinion. The planning and conduct of an audit goes beyond the limited assurance that an independent examination can provide

Consequently, I do not express an audit opinion on the view given by the financial statements, and in particular, I express no opinion as to whether the financial statements give a true and fair view of the affairs of the charity, and my report is limited to the matters set out in the statement below.

River Holme Connections

I planned and performed my examination so as to satisfy myself that the objectives of the independent examination are achieved and before finalising the report I obtained written assurances from the Trustees of all material matters.

Independent Examiner's Statement, Report and Opinion

Subject to the limitations upon the scope of my work as detailed above, I have completed my examination: and can confirm that:-

The accounts of this charitable company are not required to be audited under Part 16 of the Companies Act 2006;

This is a report in respect of an examination carried out under 145 of the Act and in accordance with Directions given by the Charity Commission under section 145(5)(b) of the Act which may be applicable;

and that no material matters have come to my attention in connection with the examination giving me cause to believe that in any material respect:-

accounting records were not kept in respect of the charity as required by Section 386 of the Companies Act 2006 and Section 130 of The Charities Act 2011;

the financial statements do not accord with those records; or

the financial statements do not comply with the applicable requirements concerning the form and content of accounts set out in section 396 of the Companies Act 2006 other than any requirement that the accounts give a 'true and fair' view, which is not a matter considered as part of an independent examination;

have not been prepared in accordance with and with the methods and principles set out in the FRS 102 SORP (Statement of Recommended Practice for Accounting and Reporting by Charities) 2019, applicable to all accounting periods beginning on or after 1st January 2019), (The SORP),

I have no concerns and have come across no other matters in connection with the examination to which attention should be drawn in this report in order to enable a proper understanding of the financial statements to be reached.

Signed:-

Pierrepont Accountants - Independent Examiner

Member of The Association of Chartered Management Accountants

Meltham Carlile Institute
Huddersfield Road
Meltham
West Yorkshire
HD9 4AE

River Holme Connections - Statement of Financial Activities for the year ended 31 December 2023

Statement of Financial Activities (including the Income and Expenditure Account for the year ended 31 December 2023, as required by the Companies Act 2006)

	SORP Ref	Current year Unrestricted Funds	Current year Restricted Funds	Current year Total Funds	Prior Year Total Funds
		2023 £	2023 £	2023 £	2022 £
Income & Endowments from:					
Charitable activities	A2	63,292	266,134	329,426	263,627
Investments	A4	1,303	-	1,303	189
Total income	A	64,595	266,134	330,729	263,816
Expenditure on:					
Charitable activities	B2	167,061	166,255	333,316	176,732
Total expenditure	B	167,061	166,255	333,316	176,732
Net income for the year		(102,466)	99,879	(2,587)	87,084
Transfers between funds	C	103,694	(103,694)	-	-
Net income after transfers	A-B-C	1,228	(3,815)	(2,587)	87,084
Net movement in funds		1,228	(3,815)	(2,587)	87,084
Reconciliation of funds:-	E				
Total funds brought forward		134,943	111,570	246,513	159,429
Total funds carried forward		136,172	107,755	243,927	246,513

The 'SORP Ref' indicated above is the classification of income set out in the formal SORP documents. As required by paragraph 4.60 of the SORP, the brought forward and carried forward funds above have been agreed to the Balance Sheet.

A separate Statement of Total Recognised Gains and Losses is not required as this statement includes all recognised gains and losses.

All activities derive from continuing operations.

The notes attached on pages 17 to 29 form an integral part of these accounts.

River Holme Connections - Statement of Financial Activities for the year ended 31 December 2023

River Holme Connections - Analysis of prior year total funds, as required by paragraph 4.2 of the SORP

	SORP Ref	Prior Year Unrestricted Funds 2022 £	Prior Year Restricted Funds 2022 £	Prior Year Total Funds 2022 £
Income & Endowments from:				
Charitable activities	A2	51,875	211,752	263,627
Investments	A4	189	-	189
Total income	A	<u>52,064</u>	<u>211,752</u>	<u>263,816</u>
Expenditure on:				
Charitable activities	B2	88,346	88,386	176,732
Total expenditure	B	<u>88,346</u>	<u>88,386</u>	<u>176,732</u>
Net income for the year		(36,282)	123,366	87,084
Transfers between funds	C	131,343	(131,343)	-
Net income after transfers		<u>95,061</u>	<u>(7,977)</u>	<u>87,084</u>
Net movement in funds		<u>95,061</u>	<u>(7,977)</u>	<u>87,084</u>
Reconciliation of funds:-	E			
Total funds brought forward		39,882	119,547	159,429
Total funds carried forward		<u>134,943</u>	<u>111,570</u>	<u>246,513</u>

All activities derive from continuing operations.

A separate Statement of Total Recognised Gains and Losses is not required as this statement includes all recognised gains and losses.

The notes attached on pages 17 to 29 form an integral part of these accounts.

River Holme Connections - Statement of Financial Activities for the year ended 31 December 2023

River Holme Connections - Resources applied in the year ended 31 December 2023 towards fixed assets for Charity use:-

	2023 £	2022 £
Funds generated in the year as detailed in the SOFA	(2,587)	87,084
Resources applied on functional fixed assets	(7,396)	(20,564)
Net resources available to fund charitable activities	<u>(9,983)</u>	<u>66,520</u>

The resources applied on fixed assets for charity use represents the cost of additions less proceeds of any disposals.

The notes attached on pages 17 to 29 form an integral part of these accounts.

River Holme Connections - Statement of Financial Activities for the year ended 31 December 2023

Movements in revenue and capital funds for the year ended 31 December 2023

Revenue accumulated funds

	Unrestricted Funds 2023 £	Restricted Funds 2023 £	Total Funds 2023 £	Last year Total Funds 2022 £
Accumulated funds brought forward	134,943	111,570	246,513	159,429
Recognised gains and losses before transfers	<u>(102,466)</u>	<u>99,879</u>	<u>(2,587)</u>	<u>87,084</u>
	32,477	211,449	243,927	246,513
 (From)/To unrestricted revenue fund	 103,694	 (103,694)	 -	 -
Closing revenue funds	<u>136,172</u>	<u>107,755</u>	<u>243,927</u>	<u>246,513</u>

Summary of funds	Unrestricted and Designated funds 2023 £	Restricted Funds 2023 £	Total Funds 2023 £	Last Year Total Funds 2022 £
Revenue accumulated funds	136,172	107,755	243,927	246,513

The notes attached on pages 17 to 29 form an integral part of these accounts.

River Holme Connections - Statement of Financial Activities for the year ended 31 December 2023

River Holme Connections

Income and Expenditure Account for the year ended 31 December 2023 as required by the Companies Act 2006

	2023 £	2022 £
Income		
Income from operations	329,426	263,627
Investment income		
Income from investments, other than interest receivable	1,303	189
Gross income in the year before exceptional items	330,729	263,816
Gross income in the year including exceptional items	330,729	263,816
Expenditure		
Charitable expenditure, excluding depreciation and amortisation	321,779	166,853
Depreciation and amortisation	11,537	9,879
Total expenditure in the year	333,316	176,732
Net income before tax in the financial year	(2,587)	87,084
Tax on surplus on ordinary activities	-	-
Net income after tax in the financial year	(2,587)	87,084
Retained surplus for the financial year	(2,587)	87,084
All activities derive from continuing operations		

In accordance with the provisions of the Companies Act 2006, the headings and subheadings used in the Income and Expenditure account have been adapted to reflect the special nature of the charity's activities.

The notes attached on pages 17 to 29 form an integral part of these accounts.

River Holme Connections - Balance Sheet as at 31 December 2023

	Note	SORP Ref	2023 £	2022 £
Fixed assets		A		
Intangible assets	10	A1	-	312
Tangible assets	11	A2	15,000	18,829
Total fixed assets			<u>15,000</u>	<u>19,141</u>
Current assets		B		
Debtors	12	B2	7,959	6,680
Cash at bank and in hand		B4	229,387	230,211
Total current assets			<u>237,346</u>	<u>236,891</u>
Creditors: amounts falling due within one year	13	C1	<u>(8,420)</u>	<u>(9,519)</u>
Net current assets			228,927	227,372
The total net assets of the charity			<u>243,927</u>	<u>246,513</u>

The total net assets of the charity are funded by the funds of the charity, as follows:-

Restricted funds				
Restricted Revenue Funds	16	D2	<u>107,755</u>	<u>111,570</u>
			107,755	111,570
Unrestricted Funds				
Unrestricted Revenue Funds	16	D3	136,172	134,943
			<u>136,172</u>	<u>134,943</u>
Total charity funds			<u>243,927</u>	<u>246,513</u>

The 'SORP Ref' indicated above is the classification of Balance Sheet items as set out in the formal SORP documents. As required by paragraph 4.60 of the SORP, the brought forward and carried forward funds above have been agreed to the SOFA..

The directors are satisfied that the company is entitled to exemption from the requirement to obtain an audit under section 477 of the Companies Act 2006.

The members have not required the company to obtain an audit in accordance with section 476 of the Act.

The directors acknowledge their responsibilities for complying with the requirements of the Companies Act 2006 with respect to accounting records and the preparation of accounts.

The financial statements have been prepared in accordance with the provisions in Part 15 of the Companies Act 2006, applicable to companies subject to the small companies regime.

The charity is subject to Independent Examination under charity legislation, and the report of the Independent Examiner is on page 9.

River Holme Connections - Balance Sheet as at 31 December 2023

The financial statements have been prepared in accordance with the provisions in Part 15 of the Companies Act 2006, applicable to companies subject to the small companies regime.

S LEE-RICHARDS

Honorary Secretary and Treasurer

Approved by the board of trustees on

The notes attached on pages 17 to 29 form an integral part of these accounts.

River Holme Connections

Notes to the Accounts for the year ended 31 December 2023

1 Accounting policies

Policies relating to the production of the accounts.

Basis of preparation and accounting convention

The accounts have been prepared on the accruals basis, under the historical cost convention, and in accordance with the Financial Reporting Standard 102, (effective 1st January 2016) and 'FRS 102 SORP (Statement of Recommended Practice for Accounting and Reporting by Charities) 2019, applicable to all accounting periods beginning on or after 1st January 2019), (The SORP), published by the Charity Commission in England & Wales (CCEW) , and in accordance with all applicable law in the charity's jurisdiction of registration, except that the charity has prepared the financial statements in accordance with the FRS 102 SORP (Statement of Recommended Practice for Accounting and Reporting by Charities) 2019, applicable to all accounting periods beginning on or after 1st January 2019), (The SORP), in preference to the previous SORP, the SORP 2005, which has been withdrawn, notwithstanding the fact that the extant statutory regulations, the Charities (Accounts and Reports) Regulations 2008 refer explicitly to the SORP 2005. This has been done to accord with current best practice.

Risks and future assumptions

The charity is a public benefit entity.

A risk assessment is carried out by the Trustees at each quarterly meeting. The risk assessment identifies the major risks faced by the charitable company and reviews the systems and procedures in place to manage those risks. A day is devoted in Autumn each year to develop a strategy and business plan for the forthcoming year.

Policies relating to expenditure on goods and services provided to the charity.

Volunteers

In accordance with the SORP, and in recognition of the difficulties in placing a monetary value on the contribution from volunteers, the contribution of volunteers is not included within the income of the charity. However, the trustees value the significant contribution made to the activities of the charity by unpaid volunteers and this is described more fully in Note 6.

Policies relating to assets, liabilities and provisions and other matters.

Cash and bank balances

Cash held by the charity is included at the amount actually held and counted at the year end. Bank balances, whether in credit or overdrawn, are shown at the amounts properly reconciled to the bank

Pensions - defined benefit schemes

The charity operates a defined benefit pension scheme. Contributions are charged to the profit and loss account and liabilities are accounted for in accordance with the principles set out in module 17 of the SORP.

River Holme Connections

Notes to the Accounts for the year ended 31 December 2023

Fund Accounting

Unrestricted funds are available for use at the discretion of the trustees in furtherance of the general objectives of the charity.

The charity receives no designated funds.

Restricted funds are subjected to restrictions on their expenditure imposed by the donor or through the terms of an appeal or as implied by law.

There are no endowment funds.

2 Liability to taxation

The Trustees consider that the charity satisfies the tests set out in Paragraph 1 Schedule 6 of the Finance Act 2010 for UK corporation tax purposes. Accordingly, the Charity is potentially exempt from taxation in respect of income or capital gains received within categories covered by chapter 3 part 11 of the Corporation Tax Act 2010 or Section 256 of the Taxation of Chargeable Gains Act 1992, to the extent that such income or gains are applied exclusively on the specific charitable objects of the charity and for no other purpose. Value Added Tax is not recoverable by the charity, and is therefore included in the relevant costs in the Statement of Financial Activities.

3 Winding up or dissolution of the charity

If upon winding up or dissolution of the charity there remain any assets, after the satisfaction of all debts and liabilities, the assets represented by the accumulated fund shall be transferred to some other charitable body or bodies having similar objects to the charity.

4 Significance of financial instruments to the charity's position

There are currently no outstanding loans.

5 Net surplus before tax in the financial year

	2023 £	2022 £
The net surplus before tax in the financial year is stated after charging:-		
Depreciation of owned fixed assets	11,537	9,878
Pension costs	2,753	1,410

6 The contribution of volunteers

A total of 5412 hours of volunteer input was contributed to the work of the charity. 3557 of these hours were contributed at practical tasks and events. Over 1406 hours of trustee input was contributed at operational and strategic levels. The number of volunteers supporting the charity increased in 2023.

River Holme Connections

Notes to the Accounts for the year ended 31 December 2023

7 Staff costs and emoluments

Salary costs	2023	2022
	£	£
Gross Salaries excluding trustees and key management personnel	125,307	69,751
Employer's National Insurance for all staff	5,628	-
Employer's operating costs of defined contribution pension schemes	2,753	1,410
Total salaries, wages and related costs	133,688	71,161

The average number of part time staff employed in the year was	1	2
The average number of full time staff employed in the year was	5	1
The estimated full time equivalent number of all staff employed in the year was	6	3

The estimated equivalent number of full time staff deployed in different activities in the year was:-

Engaged on charitable activities	5	2
Engaged on publicity activities	-	-
Engaged on fundraising activities	-	-
Engaged on management and administration	1	1
<i>The estimated full time equivalent number of all staff employed as above</i>	6	3

Neither the trustees nor any persons connected with them have received any remuneration from the charity or any related entity, either in the current or prior year.

8 Defined contribution pension schemes

The charity operates a defined contribution pension scheme, the costs of which are shown above.

The charity incurred a liability for pensions of £6423 during the year. This includes £3,670 of employee contributions recognised as part of the wages expense, and £2,753 of employer contributions recognised as a separate item. Of this £788 relates to Nature's Holme fund and £4759 relates to River Stewardship and therefore deemed to be an expense of Restricted funds.

Any liabilities and assets associated with the scheme are shown under debtors and creditors.

9 Remuneration and payments to Trustees and persons connected with them

No trustees or persons connected with them received any remuneration from the charity, or any related entity.

River Holme Connections

Notes to the Accounts for the year ended 31 December 2023

10 Intangible Fixed Assets

	2023 £	2022 £
Goodwill:		
Cost		
At 1 January 2023	1,563	1,563
At 31 December 2023	1,563	1,563
Amortisation		
At 1 January 2023	1,250	938
Provided during the year	313	313
At 31 December 2023	1,563	1,251
Net book value	-	312

Website development costs are being written off in equal annual instalments over its estimated economic life of 5 years, which equates to amortisation at 20% straight line.

11 Tangible fixed assets

Current Year	Plant & Machinery	Motor Vehicles	Total
	£	£	£
Cost			
At 1 January 2023	29,556	13,556	43,112
Additions	7,396	-	7,396
At 31 December 2023	36,952	13,556	50,508
Depreciation			
At 1 January 2023	20,894	3,389	24,283
Charge for the year	7,836	3,389	11,225
At 31 December 2023	28,730	6,778	35,508
Net book value			
At 31 December 2023	8,222	6,778	15,000
At 31 December 2022	8,662	10,167	18,829

12 Debtors

	2023 £	2022 £
Prepayments and accrued income	7,959	6,680

River Holme Connections

Notes to the Accounts for the year ended 31 December 2023

13 Creditors: amounts falling due within one year

	2023	2022
	£	£
Trade creditors	356	61
Accruals	1,080	1,813
Deferred Income - Restricted funds	6,984	7,645
	8,420	9,519

14 Income and Expenditure account summary

	2023	2022
	£	£
At 1 January 2023	246,513	159,429
Surplus after tax for the year	(2,587)	87,084
At 31 December 2023	243,927	246,513

15 Particulars of how particular funds are represented by assets and liabilities

At 31 December 2023

	Unrestricted funds	Designated funds	Restricted funds	Total Funds
	£	£	£	£
Tangible Fixed Assets	15,000	-	-	15,000
Current Assets	129,592	-	107,755	237,346
Current Liabilities	(8,420)	-	-	(8,420)
	136,172	-	107,755	243,927

At 1 January 2023

	Unrestricted funds	Designated funds	Restricted funds	Total Funds
	£	£	£	£
Intangible Assets	312	-	-	312
Tangible Fixed Assets	18,829	-	-	18,829
Current Assets	125,321	-	111,570	236,891
Current Liabilities	(9,519)	-	-	(9,519)
	134,943	-	111,570	246,513

River Holme Connections

Notes to the Accounts for the year ended 31 December 2023

16 Change in total funds over the year as shown in Note 15 , analysed by individual funds

	Funds brought forward from 2022	Movement in funds in 2023	Transfers between funds in 2023	Funds carried forward to 2024
	£	See Note 17 £	£	£
Unrestricted and designated funds:-				
Unrestricted designated - Education	286	(337)	13,283	13,233
Unrestricted designated - Staff reserves	-	-	31,185	31,185
Unrestricted general	134,657	(102,129)	59,226	91,754
Total unrestricted and designated funds	134,943	(102,466)	103,694	136,172
Restricted funds:-				
Bright Green Community Trust (BGCT)	2000	(608)	(1,392)	-
BGCT Tree Maintenance	-	2,975	(250)	2,725
Co-op Local Community Fund	-	3,216	(1,200)	2,016
Future Projects	20,783	37,130	-	57,912
Longley Fund	998	-	(1,006)	(8)
Nature's Holme/ Landscape Recovery	(20)	49,049	(57,421)	(8,392)
Neighbourly Fund	-	5	-	5
One Community Quarterly Fund	714	(138)	(611)	(35)
One Community Thornton Family Funds	-	-	750	750
Postcode Neighbour	-	12,601	(10,250)	2,351
River Ranger/ River Stewardship Restricted	19,155	-	(8,250)	10,905
Riverside Way	22,236	(14,735)	(4,243)	3,257
Water Conservators	750	5,750	(1,000)	5,500
WRF	45,254	634	(15,119)	30,769
Yorkshire Water Community Fund	-	4,000	(4,000)	-
Yorkshire Water Water Vole	(488)	-	488	-
Sundry Restricted Funds	189	-	(189)	-
Total restricted funds	111,570	99,879	(103,694)	107,755
Total charity funds	246,513	(2,587)	-	243,927

River Holme Connections

Notes to the Accounts for the year ended 31 December 2023

17 Analysis of movements in funds over the year as shown in Note 16

	Income	Expenditure	Movement in funds
	2023	2023	2023
	£	£	£
<i>Unrestricted and designated funds:-</i>			
Unrestricted designated - Education	100	(437)	(337)
Unrestricted general	64,495	(166,624)	(102,129)
	<u>64,595</u>	<u>(167,061)</u>	<u>(102,466)</u>
<i>Restricted funds:-</i>			
Bright Green Community Trust (BGCT)	-	(608)	(608)
BGCT Tree Maintenance	2,975	-	2,975
Co-op Local Community Fund	3,397	(181)	3,216
Future Projects	37,130	-	37,130
Nature's Holme/ Landscape Recovery	82,283	(33,234)	49,049
Neighbourly Fund	400	(395)	5
One Community Quarterly Fund	1,000	(1,138)	(138)
Postcode Neighbour	18,397	(5,796)	12,601
Riverside Way	10,359	(25,094)	(14,735)
Water Conservators	5,750	-	5,750
WRF	100,443	(99,809)	634
Yorkshire Water Community Fund	4,000	-	4,000
	<u>266,134</u>	<u>(166,255)</u>	<u>99,879</u>

River Holme Connections

Notes to the Accounts for the year ended 31 December 2023

18 The purposes for which the funds as detailed in note 16 are held by the charity are:-

Unrestricted and designated funds:-

Unrestricted and designated Revenue funds	These funds are held for the meeting the objectives of the charity, and to provide reserves for future activities, and ,subject to charity legislation, are free from all restrictions on their use.
---	--

Restricted funds:-

Bright Green Community Trust	The Bright Green Community Trust reserve was created by a donation from One Community Foundation and will be utilised for staff time to run community tree/ hedge scheme maintenance days, to purchase native trees/ hedge plants and tree protection materials (tree guards and stakes) as well as volunteer PPE and tools.
Co-op Local Community Projects	Funding was received to enable us to carry out practical conservation task days with the local community. Training events in wildflower identification and hedge laying will be run for volunteers
Future Projects	The Future Projects reserve was created by an individual donor.
Nature's Holme/ Landscape Recovery	<p>Nature's Holme is a project that aims to restore 2800ha of the landscape in the Holme Valley, Yorkshire.</p> <p>One of 22 nationally important projects funded by DEFRA, a collection of organisations and over 20 landowners have come together to plan and design interventions to improve water quality and increase biodiversity throughout the River Holme catchment.</p> <p>Nature's Holme intends to boost wider access opportunities for everyone, improve biodiversity and help Kirklees become net zero. It aims to achieve this by exploring river restoration opportunities, woodland creation, peatland restoration, accessible routes, wildflower meadow creation and natural flood management works such as ponds to store water.</p>
Neighbourly Fund	Funding was received to purchase new tools and materials such as wildflower seed and root grow, to support volunteering activities and environmental improvements.
One Community	The One Community reserve was created by funding from One Community Foundation and will be utilised for wildlife cameras and equipment for volunteers to monitor wildlife.
Postcode Neighbourhood Trust	Funding was received for the "River Guardians" project to train and equip our volunteer team and to enable the charity to carry out practical conservation days with our volunteer team and local community groups.

River Holme Connections

Notes to the Accounts for the year ended 31 December 2023

River Stewardship	The River Stewardship reserve is created by public donations from the Japanese knotweed treatment programme and staff time from other funding reserves.
Riverside Way	The Riverside Way reserve was created by donations and will be utilised to improve the Riverside Way.
Water Conservators	The Water Conservators Trust reserve was created by funding from The Water Conservators Trust and will be utilised for the Mayfly in the Classroom education project.
The White Rose Forest (WRF)	The White Rose Forest reserve was created by funding from the White Rose Forest. It was utilised in tree planting, tree scheme maintenance and purchase of native trees/ hedge plants and the installation of fences.
Yorkshire Water Community Funding	Funding was received to run regular "Community action days" where local people can learn about and help improve their local rivers and green spaces in the Holme catchment. A campaign to raise awareness of the issues caused by green waste and surface water pollution was also run.
Yorkshire Water Core Funding	Yorkshire Water core funding reserve was created by funding from Yorkshire Water and was utilised for staff time.
Yorkshire Water Water Vole Project	The Yorkshire Water Water Vole project reserves was created by funding from Yorkshire Water and was utilised to carry out water vole/ American mink surveys in the catchment.

19 Ultimate controlling party

The charity is under the control of its legal members.

River Holme Connections

Detailed analysis of income and expenditure for the year ended 31 December 2023 as required by the SORP 2015

This analysis is classified by conventional nominal descriptions and not by activity.

20 Charitable income from funders

	Current year Unrestricted Funds	Current year Restricted Funds	Current year Total Funds	Prior Year Total Funds
	2023	2023	2023	2022
	£	£	£	£
Arnold Clark Community Fund				1,000
BGCT Tree Maintenance	-	2,975	2,975	2,000
Co-op Local Community Fund	-	3,397	3,397	-
Future Projects		37,130	37,130	15,523
Hirst Brierley	-	-	-	3,000
Longley Fund	-	-	-	998
Nature's Holme/ Landscape Recovery	-	82,283	82,283	-
Neighbourly Fund	-	400	400	-
One Community Quarterly Fund	-	1,000	1,000	714
PCLT			-	239
Postcode Neighbour	-	18,397	18,397	-
River Ranger and River Stewardship Restricted	-	-	-	25,250
Riverside Way	-	10,359	10,359	24,038
Seeds of Change			-	400
Water Conservators	-	5,750	5,750	750
WRF		100,443	100,443	112,840
Yorkshire Water Community Fund		4,000	4,000	5,000
Yorkshire Water Crayfish			-	2,000
Yorkshire Water Staff Funding			-	15,000
Yorkshire Water Water Vole			-	3,000
Unrestricted designated - Education	100		100	2,023
Unrestricted general	63,192		63,192	49,852
		-		
	63,292	266,134	329,426	263,627

River Holme Connections

Detailed analysis of income and expenditure for the year ended 31 December 2023 as required by the SORP 2015

21 Total Income from charitable activities

		Current year Unrestricted Funds 2023 £	Current year Restricted Funds 2023 £	Current year Total Funds 2023 £	Prior Year Total Funds 2022 £
Charitable income from funders		63,292	266,134	329,426	263,627
Total from charitable activities	A2	63,292	266,134	329,426	263,627

22 Investment income

		Current year Unrestricted Funds 2023 £	Current year Restricted Funds 2023 £	Current year Total Funds 2023 £	Prior Year Total Funds 2022 £
Other Investment Income		1,303	-	1,303	189
Total investment income	A4	1,303	-	1,303	189

23 Expenditure on charitable activities - Direct spending

		Current year Unrestricted Funds 2023 £	Current year Restricted Funds 2023 £	Current year Total Funds 2023 £	Prior Year Total Funds 2022 £
Subcontract payments		6,471	133,159	139,630	59,956
Total direct spending	B2a	6,471	133,159	139,630	59,956

River Holme Connections

Detailed analysis of income and expenditure for the year ended 31 December 2023 as required by the SORP 2015

24 Support costs for charitable activities

	Current year Unrestricted Funds 2023 £	Current year Restricted Funds 2023 £	Current year Total Funds 2023 £	Prior Year Total Funds 2022 £
<i>Employee costs not included in direct costs</i>				
Other salaries	109,884	15,423	125,307	69,751
Employer's NI - Other salaries	4,875	753	5,628	-
Defined contribution pension costs - Other salaries	2,415	338	2,753	1,410
Training and welfare - staff	4,838	2,236	7,074	2,729
Travel and subsistence - staff	969	211	1,180	1,338
Recruitment expenses	111	162	273	243
<i>Premises Expenses</i>				
Rent payable under operating leases	6,560	-	6,560	4,050
Cleaning and waste management	145	-	145	18
Office costs and media	554	164	718	877
<i>Administrative overheads</i>				
Telephone, fax and internet	2,108	-	2,108	1,259
Postage	203	267	470	231
Stationery and printing	820	2,851	3,671	2,334
Equipment expenses	2,045	7,792	9,837	13,013
Software licences and expenses	1,803	-	1,803	1,556
Advertising and marketing	317	157	474	-
Liability and contents insurance	6,354	249	6,603	2,815
Sundry expenses	90	-	90	-
Charity administration	1,125	1,853	2,978	2,113
Motor expenses	2,511	118	2,629	763
<i>Professional fees paid to advisors other than the auditor or examiner</i>				
Accountancy fees other than examination or audit fees	1,080	-	1,080	1,813
Legal fees	245	521	766	584
<i>Financial costs</i>				
Depreciation & Amortisation in total for	11,537	-	11,537	9,878
Total support costs - Current Year	160,590	33,096	193,686	116,775
				-
				-
				-

River Holme Connections

Detailed analysis of income and expenditure for the year ended 31 December 2023
as required by the SORP 2015

25 Total Charitable expenditure

		Current year Unrestricted Funds 2023 £	Current year Restricted Funds 2023 £	Current year Total Funds 2023 £	Prior year Total Funds 2022 £
Total direct spending	B2a	6,471	133,159	139,630	59,956
Total support costs	B2d	160,590	33,096	193,686	116,775
Total charitable expenditure	B2	167,061	166,255	333,316	176,731