

ILKLEY ARTS

England & Wales · Charity number 1163861

Details

Status Registered

Legal form CIO

Registered 2015-10-06

Register [View on the Charity Commission register](#)

Contact

Address 8 Craiglunds Park
Ilkley
West Yorkshire
LS29 8SX

Phone 01943608021

Email members@ilkleyarts.org

Website www.ilkleyarts.org.uk

Activities

Objects: THE OBJECTS OF THE CIO ARE AS FOLLOWS:TO PROMOTE THE PUBLIC'S APPRECIATION OF ART IN ILKLEY AND THE SURROUNDING METROPOLITAN DISTRICT BY PROVIDING ACCESS TO PEOPLE OF ALL AGES AND SOCIO-ECONOMIC GROUPS LIVING,WORKING IN OR VISITING THE AREA, IN PARTICULAR (BUT NOT EXCLUSIVELY) BY FACILITATING COMMUNITY ENGAGEMENT ACTIVITIES SUCH AS WORKSHOPS, MASTER CLASSES, ART WALKS,AWARD PROJECTS, EXHIBITIONS, CURATOR DEVELOPMENT AND THE COMMISSIONING OF PUBLICART.NOTHING IN THE CONSTITUTION SHALL AUTHORISE AN APPLICATION OF THE PROPERTY OF THE CIO FOR THE PURPOSES WHICH ARE NOT CHARITABLE IN ACCORDANCE WITH SECTION 7 OF THE CHARITIES AND TRUSTEE INVESTMENT (SCOTLAND) ACT 2005.

Activities: Providing people of Ilkley and surrounding area access to high quality, thought provoking and spirit-enhancing art, in particular by facilitating community engagement activities such as workshops, masterclasses, art walks, award projects, exhibitions, curator development and commissioning public art.

Classification

- **How:** Provides Human Resources, Provides Buildings/facilities/open Space, Provides Services, Sponsors Or Undertakes Research, Acts As An Umbrella Or Resource Body
- **What:** Education/training, The Advancement Of Health Or Saving Of Lives, Arts/culture/heritage/science, Recreation
- **Who:** Children/young People, Elderly/old People, People With Disabilities, Other Defined Groups, The General Public/mankind

Geography

- **Area of benefit:** IN ILKLEY AND THE SURROUNDING METROPOLITAN DISTRICT
- Bradford City
- Leeds City

Finances

Period end	Income	Expenditure	Assets	Employees
2024-12-31	£12,660	£13,570	-	-
2023-12-31	£14,736	£14,650	-	-
2022-12-31	£12,321	£16,083	-	-
2021-12-31	£29,955	£17,227	-	-
2020-12-31	£27,867	£13,314	-	-

Trustees

Name	Role	Appointed
Andrew James		2025-06-30
Catherine Barrett		2024-03-23
Charles Swinbourne		2025-06-30
Hayley Cooper		2025-06-30
John Giles		2024-03-23
Sarah Gamble		2024-03-23

ILKLEY ARTS

England & Wales - Charity number 1163861

Accounts

**ILKLEY ARTS
REGISTERED CHARITY
NUMBER
1163861**

UNAUDITED ACCOUNTS

FOR THE YEAR TO 31ST DECEMBER 2024

**ILKLEY ARTS
YEAR ENDED 31ST DECEMBER 2024**

Trustees Report

Pages

3 to 8

Income and Expenditure Account

9

Balance Sheet

10

Commented [JL1]: Check page numbers once trustee report is finalised

**ILKLEY ARTS
YEAR ENDED 31ST DECEMBER 2024**

Trustee Report 2024

2024 has been a year of growth and consolidation for Ilkley Arts, building on the momentum of previous years while strengthening our governance, outreach, and artistic programming. We continued to support our members with a diverse range of events, exhibitions, and workshops, cultivating a flourishing creative community. Our commitment to collaboration remained strong, with key partnerships—particularly with Art School Ilkley and Ilkley Manor House Trust—helping us expand our reach and impact.

A key highlight of the year was our Ilkley Arts Open Studios event, which brought together over 20 artists who welcomed hundreds of visitors into their creative spaces. Alongside this, we hosted several successful exhibitions and pop-up events, providing artists with opportunities to showcase and sell their work while engaging with the wider community. The success of these events highlights the growing interest in and support for the arts within Ilkley and the surrounding areas.

Looking ahead, we have strengthened our governance by appointing new trustees and are planning an ambitious programme of events for 2025. With a renewed leadership team and an exciting calendar of creative opportunities, Ilkley Arts remains committed to supporting artists, engaging the community, and nurturing a culture of creativity in Ilkley and beyond.

Art Studio

Sarah and John Gamble (Art School Ilkley) continue to maintain and run the studio with cleaning, decorating, and general maintenance as and when needed, as well as organising the studio rental for other interested parties.

The studio has been used by Ilkley Arts increasingly this year for both meetings and several members' events which have included the Open Studios in October & the annual members' Pop-Up Exhibition in November. The studio was also used for a couple of non-members' meetings, and the Ilkley Literature Festival used it for a workshop during the festival itself. In addition, there were three members exhibitions in 2024:

Glasshouses & Greenery (June): Trustee and artist Cat Barrett showcased her vibrant watercolours and acrylic inks, bringing botanical beauty to life. The exhibition featured original artworks reflecting her deep connection to nature, from intricate plant studies to sweeping greenhouse scenes. Attendees had the opportunity to purchase original pieces and high-quality prints.

TRUE COLOURS: THIS IS ME (November): North Yorkshire-based artist Katrina Thompson presented her first solo exhibition, showcasing a compilation of her 2024 works. Transitioning from graphite and colored pencil to acrylic and mixed media, Katrina's pieces featured impasto palette knife strokes with vibrant colors, inviting viewers to form personal connections with each abstract piece.

**ILKLEY ARTS
YEAR ENDED 31ST DECEMBER 2024**

PLACE: An Exhibition of Landscape & Still Life Paintings by Rebecca Carr (November): Rebecca Carr explored the relationship between home comforts and the outside world through her landscape and still life paintings. The exhibition featured scenes from various UK locations, including Yorkshire, rendered in acrylic on canvas and water-based oil. Rebecca's work aimed to evoke feelings relative to the subject, inviting viewers to connect with the depicted places and objects.

The planned members' programme for 2025 will see even further usage of the studio which will help to support and celebrate the arts locally.

Artist in the Attic

Ilkley Arts continues to provide a flexible and affordable attic space, which is to be a popular place for artists and practitioners to utilise and develop their practice. During the year, Duncan Slater was in residence. He is a fully qualified counsellor and is developing his therapy practice in conjunction with Ilkley Grammar School for children and young adults.

Commented [JL2]: JG1 to update

New Website

In the summer we revamped the Ilkley Arts website, which now offers a comprehensive and user-friendly experience, reflecting the charity's mission to promote and celebrate the arts in Ilkley and surrounding areas. Visitors can explore upcoming events, access an artists' directory, and learn about our mission and art spaces. The site also provides information on membership opportunities, Art School Ilkley, and upcoming exhibitions and events. Additionally, users can find details on renting the Ilkley Arts studio for various purposes, including exhibitions, meetings, art classes, and workshops. The website is a central hub for artists and art enthusiasts to connect, engage, and participate in the vibrant local art community.

Membership Scheme

Our membership grew in 2024, from 67 to 88 by the end of the year. This was due to improving our website and ease of joining, increasing our social media presence, and a push for membership principally through people engaging in art classes with our partner Art School Ilkley.

The programme of member events for 2024 included:

- Another successful members' 'crit' event took place in April enabling the attending artists to not only look & develop ideas for developing their own work but to also look at the work of others and learn from them. Trustee Jeremy Lewis offered coaching to participants which was well received. Participants benefited greatly from the experience.

ILKLEY ARTS YEAR ENDED 31ST DECEMBER 2024

- Our annual fundraising Secret Postcard event was held in June with around 200 amazing postcards being donated from various artists from around Britain. The standard of the submissions was excellent and it was heartening to see lots of different and imaginative media being used. We raised £2,975 , half of which was donated to Wharfedale Refugee Response.
- In September we hosted a creative social Walk & Draw event, organised and coordinated by member Zoe Platt. Ten participants enjoyed favourable weather as they embarked on a scenic walk from the Ilkley Arts Studio along the river to Addingham, concluding at a local pub. The event provided an opportunity for members to connect, explore their creative practice, and draw inspiration from their natural surroundings. It was a day filled with engaging conversations, artistic exploration, and a deeper understanding of one another's practices and interests. The diverse outcomes of the Walk & Draw were beautifully showcased in a printed collaborative book, celebrating the collective creativity of those involved. Participants paid a small contribution to the digital printing of the book and received two copies to keep. A digital version was published and made available online.
- In November, the Ilkley Arts Studio transformed into a dynamic art haven for our members' Pop-Up Gallery, showcasing diverse works from over 80 talented member artists. The exhibition featured a wide range of artistic expressions, including painting, sculpture, photography, and mixed media, with artworks available for purchase directly from the artists. This event celebrated the creativity and talent of the local artistic community, offering visitors an immersive experience in the local art scene.
- To round the year off and celebrate all that happened over 2024 we held our third **Sorta-Pecha-Kucha** at the Manor House in December. Around 40 members experienced several short talks covering a range of creative interests.

Ilkley Arts Open Studios Event

Our flagship event in 2024, Ilkley Arts Open Studios successfully brought together over 20 artists, who opened their creative spaces to the public over two inspiring days. Visitors had the unique opportunity to step into these studios, observe works in progress, and engage directly with the artists behind them. Each artist was listed with a corresponding number on the event digital map, with those sharing a number (1A, 1B, 1C...) located at the same venue, making it easy for attendees to navigate and explore multiple studios. This structure allowed for deeper engagement, as visitors could learn more about individual artistic processes, purchase original works, and make meaningful connections with the local creative community. The event celebrated the wealth of talent within Ilkley and reinforced the importance of accessible and interactive art experiences in strengthening cultural identity.

**ILKLEY ARTS
YEAR ENDED 31ST DECEMBER 2024**

The event was met with overwhelmingly positive feedback from participating artists, with many highlighting strong visitor engagement and successful sales over the weekend. Across the two-day event, artists welcomed many visitors, with some studios seeing over 100 attendees each day. Many artists sold well, underscoring the event's role in supporting the local creative economy.

Artists expressed appreciation for the event's organisation - particularly the social media coverage and promotional efforts - which contributed to footfall. However, some suggested that expanding marketing efforts, particularly through posters and social media, could further enhance visibility and attendance in future editions. Additionally, improving signage and event navigation was highlighted as a way to make the visitor experience smoother.

Looking ahead, there is an opportunity to build on this year's success by expanding outreach efforts, increasing collaborations, and refining logistical elements to ensure an even stronger Open Studios event in the future. The enthusiasm and commitment of both artists and visitors reaffirm the event's importance in Ilkley's cultural landscape, and we look forward to continuing to develop and grow this vital artistic platform.

Financial position

We commenced the year with £30.0k in reserves, plus £1.2k of restricted funds relating to a post-Covid resilience grant.

We continue to subsidise the studio and attic space in support of our charitable aims. Due to increased member numbers and increased commissions from member events, we made a small surplus of £0.3k in the unrestricted fund. We spent up the restricted fund on reliance activity including governance, marketing, the new website and facilities improvements.

Our closing reserves totalled £30.4k.

Commented [JL3]: Check this figure after Giftaid accrual is posted

Commented [JL4]: And this one

Partnership working

We have always had a remarkably close and encouraging relationship with Ilkley Manor House Trust. This union is made stronger by one of our members advisory committee attending the Manor House Trust programme meetings held every few months. Both parties share their ideas and plans for the year ahead. This process enables us to support each other and sometimes collaborate. In 2025, we expect to be collaborating to run the second Ilkley Open Exhibition.

Art School Ilkley continues to be the key user of the studio with an average of over 100 students a week, during term time, engaging in creative activities over three days. The Art School runs an inclusive policy with students from varying backgrounds and needs offering a creative space of equality and diversity. Students vary in ages, from 10 years of age, they also vary in

**ILKLEY ARTS
YEAR ENDED 31ST DECEMBER 2024**

creative experience. Art School Ilkley provides many with a pathway to more formal arts education.

Future

On March 18, 2025, Cat Barrett was appointed chair of trustees, and Jeremy Lewis and Kathryn Fox resigned as trustees. We thank them for their service.

The trustees are supported by a Members' Advisory Committee, chaired by John Gamble with several volunteer-members alongside the trustees. This was originally formed in 2022 and has proved invaluable to engage with members and energise our programme of events.

Commented [JL5]: Update if any new trustees are appointed before accounts are signed

Conclusion

Ilkley Arts has an exciting lineup of events planned for 2025, offering a mix of workshops, exhibitions, and community engagement opportunities.

A key highlight of the year will be the much-anticipated Ilkley Arts Open Studios in October,, where local artists will once again open their creative spaces to the public, inviting engagement with their work and processes.

Signed



Cat Barrett, Chair of Trustees

18 March, 2025

Commented [JL6]: Amend date as required

Trustees

Jeremy Lewis	(Appointed Chair 23 rd April 2024, resigned 18 th March 2025)
Cat Barrett	(Appointed 23 rd April 2024, appointed Chair 18 th March 2025)
Kathryn Fox	(Resigned 18 th March 2025)
Sarah Gamble	(Appointed 23 rd April 2024)
John Giles	(Appointed 23 rd April 2024)
Joanne Tinker	(Resigned 23 rd April 2024)

**ILKLEY ARTS
YEAR ENDED 31ST DECEMBER 2024**

Structure and Governance

The Charity is a CIO registered 6th October 2015

Principal address

8 Craiglands Park
Ilkley
LS29 8SX

Accountant

J Kendall ACA

**ILKLEY ARTS
YEAR ENDED 31ST DECEMBER 2024**

Statement of Financial Activities

	Year to 31st December 2024			Year to 31st December 2023		
	£ Unrestricted	£ Restricted	£ Total	£ Unrestricted	£ Restricted	£ Total
Incoming Resources						
Grants and Donations						
BMDC Covid Rates Grant	-	-	-	670	-	-
Donations	81	-	81	165	-	165
	<u>81</u>	<u>-</u>	<u>81</u>	<u>835</u>	<u>-</u>	<u>835</u>
Income generated						
Artists Commission and Fees	1,906	-	1,906	2,942	-	2,942
Membership fees	4,025	-	4,025	3,592	-	3,592
Studio rental	5,970	-	5,970	6,015	-	6,015
Gift Aid	678	-	678	1,353	-	1,353
	<u>12,579</u>	<u>-</u>	<u>12,579</u>	<u>13,902</u>	<u>-</u>	<u>13,902</u>
Interest received	1	-	1	-	-	-
Total Incoming Resources	12,660	-	12,660	14,737	-	14,737
Resources Expended						
Bursary	-	-	-	150	-	150
Arts Scholarship	-	-	-	-	-	-
Insurance	96	-	96	96	-	96
Membership costs	109	-	109	-	-	-
Design and print	38	-	38	457	-	457
Website and marketing	413	574	987	500	442	942
Websales costs	-	-	-	-	-	-
Arts Studio - rent and rates	10,714	-	10,714	10,533	-	10,533
Arts Studio - overheads	128	234	362	193	-	193
Arts Studio - other costs	484	-	484	332	340	672
Professional fees	381	400	781	808	800	1,608
Sundry	0	-	-	0	-	-
	<u>12,362</u>	<u>1,208</u>	<u>13,570</u>	<u>13,069</u>	<u>1,582</u>	<u>14,651</u>
Total Resources Expended	12,362	1,208	13,570	13,069	1,582	14,651
Net movement in funds	298	(1,208)	(911)	1,668	(1,582)	86
Funds of the Charity						
Funds brought forward	30,069	1,208	31,277	28,401	2,790	31,191
Funds carried forward	30,367	(0)	30,366	30,069	1,208	31,277

Commented [JL7]: Need to post the Gift Aid accrual

**ILKLEY ARTS
YEAR ENDED 31ST DECEMBER 2024**

Balance Sheet

	31st December 2024			31st December 2023		
	£	£	£	£	£	£
	Unrestricted	Restricted	Total	Unrestricted	Restricted	Total
Current assets						
Bank Current Account	29,859	100	29,959	31,492	1,582	31,118
Debtors and Prepayments	677		677	1,643		1,643
	<hr/>			<hr/>		
Total Assets	30,536	100	30,636	33,135	1,582	32,761
Current liabilities						
Trade Creditors	(170)	(100)	(270)	(1,484)	0	(1,484)
	(170)	(100)	(270)	(1,484)	-	(1,484)
	<hr/>			<hr/>		
Net current assets	30,366	-	30,366	31,651	1,582	33,233

C. Brett

Trustees
18th March 2025

**ILKLEY ARTS
YEAR ENDED 31ST DECEMBER 2024**

1 Accounting policies

The accounts have been prepared in line with the applicable Charity Law in the Jurisdiction of registration. Ilkley Arts has adopted FRS 102 and the Charities SORP.

The Charity is exempt from the requirement to prepare a cashflow.

The Charity is under the threshold required for independent examination.

2 Transfer of Business

On the 1st May 2016 the assets and liabilities of Ilkley Art Trail transferred to Ilkley Arts.

3 Grants and Donations

	2024 Unrestricted funds £	2024 Restricted funds £	2024 Total funds £	2023 Total funds £
Grants				
BMDC Resilience grant	-	-	-	1,208
	<u>-</u>	<u>-</u>	<u>-</u>	<u>1,208</u>

Restricted funds - 2024

	Balance b/f £	Incoming £	Outgoing £	Transfers £	Balance c/f £
BMDC Resilience grant	1,208	-	(1,208)	-	(0)
	<u>1,208</u>	<u>-</u>	<u>(1,208)</u>	<u>-</u>	<u>(0)</u>

Restricted funds - 2023

	Balance b/f £	Incoming £	Outgoing £	Transfers £	Balance c/f £
BMDC Resilience grant	2,790	-	(1,582)	-	1,208
	<u>2,790</u>	<u>-</u>	<u>(1,582)</u>	<u>-</u>	<u>1,208</u>

Fund name

Purpose of restriction

BMDC Resilience grant

Build resilience so that we can further support our charitable aims into the future.

Commented [JL8]: Please check outgoing and balance c/f for 2023 - figures seem to be wrong way around?

ILKLEY ARTS

England & Wales - Charity number 1163861

Accounts

**ILKLEY ARTS
REGISTERED CHARITY
NUMBER
1163861**

UNAUDITED ACCOUNTS

FOR THE PERIOD TO 31ST DECEMBER 2023

**ILKLEY ARTS
YEAR ENDED 31ST DECEMBER 2023**

	Pages
Trustees Report	3 to 7
Income and Expenditure Account	8
Balance Sheet	9

Trustee Report 2023

2023 represented a full year of 'business as usual' for Ilkley Arts, following the Covid pandemic. We deployed resilience grant money specifically to strengthen our charity in terms of governance, facilities and marketing and enabling our members to bounce back through creative workshops. The support for our members in turn helped us to promote and celebrate the arts locally.

Along with running members events and deepening the working relationship with our key partners – Art School Ilkley and the Ilkley Manor House Trust – we embarked on our very first Open Exhibition, which attracted high quality artist involvement from all over the UK and helped to raise our profile locally and nationally.

We commence 2024 by appointing new trustees to further strengthen our governance and provide resilience for the future, and by planning an exciting programme of member-led events. Joanne Tinker has been a trustee for seven years and steps down from this role at this time. We thank her for her commitment to Ilkley Arts, which has been outstanding. We will continue to benefit from Joanne's energy and creativity as she will continue in her role on our Members' Advisory Committee.

Open Exhibition

2023 saw the launch of the Ilkley Arts Open Exhibition. Themed 'Take Time,' it was held at the historic Manor House Ilkley and attracted submissions from across the country by artists working in a range of media. A rigorous selection process by a panel of invited professionals and Ilkley residents produced a highly engaging, well attended exhibition of work by the selected artists. Feedback from visitors to the exhibition was overwhelmingly positive. Ilkley Arts is grateful for support received from Tinker Gallery Ilkley and Ilkley Manor House in delivering its inaugural Open Exhibition.

Art Studio

Sarah and John Gamble (Art School Ilkley) continue to maintain and run the studio with cleaning, decorating and general maintenance as and when needed as well as organising the studio rental for other interested parties.

The studio has been used by Ilkley Arts for both meetings and several members workshops (see Membership Scheme below).

There have been three different members exhibitions over the year and three non-members exhibitions which included the Aire Valley Art Groups annual exhibition which ran for 10 consecutive days in December. In addition, the studio has been used for a couple of non-members meetings as well as a

**ILKLEY ARTS
YEAR ENDED 31ST DECEMBER 2023**

photographer using the space for a photoshoot and a gardener for a training day.

Artist in the Attic

Ilkley Arts has continued to provide a flexible and affordable attic space, which continues to be a popular place for artists and practitioners to utilise and develop their practice. We currently have Duncan Slater in residence, who is a fully qualified counsellor and is developing his therapy practice in conjunction with Ilkley Grammar School for children, young adults and is considering offering this vital service for adults in the coming months.

Membership Scheme

Our membership remained broadly flat in 2023, ending the year with 67 members.

The programme of member events for 2023 included:

- Three workshops for members. These were designed around members' requests for art practice mentoring, critical appraisal and the need to learn more about social media platforms: Artist Tom Wood worked with eight of our members over three days. At our 'crit' event Art School Ilkley's Sarah Gamble helped members look, listen and learn about a particular piece of their artwork and trustee Jeremy Lewis provided some coaching on demand. Member Cat Barrett shared her knowledge on how member-artists can manage their art Instagram and Facebook platforms.
- Our second hidden postcard auction, 'A Different View,' took place in May. 192 amazing postcards were donated and at the end of the weekend we raised £2,975 with half going to Ilkley Arts and half to Wharfedale Refugee Response.
- A members' pop-up exhibition took place during Ilkley's Creative Weekend and the Ilkley Literature Festival in October. The studio looked beautiful filled with members' wonderful artwork and over £1.5k was taken in sales.
- A festive tabletop sale over the first weekend in December, coinciding with Christmas Fair at the Manor House. This was held in the Ilkley Arts Studio and featured work by seven members.
- To round the year off and celebrate all that happened over 2023 we held our second Sorta-Pecha-Kucha at the Manor House in December.

ILKLEY ARTS YEAR ENDED 31ST DECEMBER 2023

Around 30 members experienced several short talks covering a range of creative interests.

In addition:

- We awarded member John Giles a bursary early in the year. His work culminated in a multi-media event at Ilkley Library in November entitled LIMINAL.
- Three of our members were shortlisted for the Improving Ilkley Fountain Design competition, with member Juliet Gutch's design being chosen by public vote as the winning entry. The fountain is expected to be installed in Ilkley town centre in 2024.
- Members were invited to several Private Viewings of exhibitions at the Manor House and at Tinker Gallery. These included two exhibitions at Tinker Gallery by Ilkley Arts members Louise Hepworth-Wood (entitled: Somewhere Else), and John Gamble with his son Joe (entitled: Ordinary Dust).

Financial position

We commenced the year with £31.2k in reserves, which included £2.8k of restricted funds relating to a post-Covid resilience grant.

We continue to subsidise the studio and attic space in support of our charitable aims. As such, we made a small loss of £0.5k in the unrestricted fund. This was more than offset by £2.1k in grants and Gift Aid. We spent £1.6k of the restricted fund on reliance activity including governance, marketing and facilities improvements.

Our closing reserves totalled £31.2k, which includes £1.2k of restricted funds. We intend to spend the remaining restricted funds on website improvements and strengthening our governance.

Partnership working

We have always had a remarkably close and encouraging relationship with Ilkley Manor House Trust. This union is made stronger by one of our trustees attending the Manor House Trust programme meetings held every few months. Both parties share their ideas and plans for the year ahead. This process enables us to support each other and sometimes come together on such things as our Open Exhibition this year.

Art School Ilkley continues to be the key user of the studio with an average of over 100 students a week, during term time, engaging in creative activities

**ILKLEY ARTS
YEAR ENDED 31ST DECEMBER 2023**

over three days. The Art School runs an inclusive policy with students from varying backgrounds and needs offering a creative space of equality and diversity. Students vary in ages, from 10 years of age, they also vary in creative experience. Art School Ilkley provides many with a pathway to more formal arts education.

Future

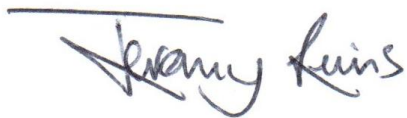
Three trustees served throughout 2023 – Kathryn Fox, Jeremy Lewis and Joanne Tinker. At the date of signature of this report, we have appointed three new trustees to strengthen the board – Cat Barrett, Sarah Gamble and John Giles. Jeremy Lewis was appointed chair of trustees at that date and Joanne Tinker resigned.

The trustees are supported by a Members' Advisory Committee, chaired by John Gamble with several volunteer-members alongside the trustees. This was originally formed in 2022 and has proved invaluable to engage with members and energise our programme of events.

Conclusion

We have several events already in the pipeline for 2024 including a spring programme of members' workshops, a members' pop-up exhibition, another secret postcard fundraiser, and an Open Studio Trail where our members will open their studios to the public to promote and celebrate the thriving local arts scene.

Signed

A handwritten signature in blue ink that reads "Jeremy Lewis". The signature is written in a cursive style with a horizontal line above the first few letters.

Jeremy Lewis, Chair of Trustees
April 23, 2024

**ILKLEY ARTS
YEAR ENDED 31ST DECEMBER 2023**

Trustees

Jeremy Lewis	(Appointed Chair 23rd April 2024)
Cat Barrett	(Appointed 23rd April 2024)
Kathryn Fox	
Sarah Gamble	(Appointed 23rd April 2024)
John Giles	(Appointed 23rd April 2024)
Joanne Tinker	(Resigned 23rd April 2024)

Structure and Governance

The Charity is a CIO registered 6th October 2015

Principal address

8 Craiglands Park
Ilkley
LS29 8SX

Accountant

J Kendall ACA

ILKLEY ARTS
YEAR ENDED 31ST DECEMBER 2023

Statement of Financial Activities

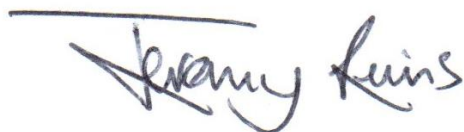
	Year to 31st December 2023			Year to 31st December 2022		
	£	£	£	£	£	£
	Unrestricted	Restricted	Total	Unrestricted	Restricted	Total
Incoming Resources						
Grants and Donations						
BMDC Covid Rates Grant	-	670		-	3,200	
Donations	165	-		-	-	
	<u>165</u>	<u>670</u>	835	<u>-</u>	<u>3,200</u>	3,200
Income generated						
Artists Commission and Fees	2,941	-		41	-	
Membership fees	3,592	-		3,245	-	
Studio rental	6,015	-		5,835	-	
Gift Aid	1,353	-		-	-	
	<u>13,901</u>	<u>-</u>	13,901	<u>9,121</u>	<u>-</u>	9,121
Interest received						
Total Incoming Resources	<u>14,066</u>	<u>670</u>	<u>14,736</u>	<u>9,121</u>	<u>3,200</u>	<u>12,321</u>
Resources Expended						
Bursary	150	-		975	-	
Arts Scholarship	-	-		1,650	-	
Insurance	96	-		96	-	
Membership costs	-	-		169	-	
Design and print	457	-		191	-	
Website and marketing	696	-		484	-	
Websales costs	-	-		-	-	
Arts Studio - rent and rates	10,726	-		10,249	-	
Arts Studio - overheads	168	-		221	-	
Arts Studio - other costs	248	-		1,225	-	
Professional fees	808	1,301		413	300	
Sundry	0	-		0	110	
	<u>13,349</u>	<u>1,301</u>	<u>14,650</u>	<u>15,673</u>	<u>410</u>	<u>16,083</u>
Total Resources Expended	<u>13,349</u>	<u>1,301</u>	<u>14,650</u>	<u>15,673</u>	<u>410</u>	<u>16,083</u>
Net movement in funds	717	(631)	86	(6,552)	2,790	(3,762)
Funds of the Charity						
Funds brought forward	28,401	2,790	31,191	34,953	-	34,953
Funds carried forward	<u>29,118</u>	<u>2,159</u>	<u>31,277</u>	<u>28,401</u>	<u>2,790</u>	<u>31,191</u>

**ILKLEY ARTS
YEAR ENDED 31ST DECEMBER 2023**

Balance Sheet

	31st December 2023			31st December 2022		
	£	£	£	£	£	£
	Unrestricted	Restricted	Total	Unrestricted	Restricted	Total
Current assets						
Bank Current Account	28,959	2,159		29,082	3,200	
Debtors and Prepayments	1,643			445		
	<hr/>			<hr/>		
Total Assets	30,602	2,159		29,527	3,200	
Current liabilities						
Trade Creditors	(1,484)	0		(1,236)	(300)	
	<hr/>	<hr/>		<hr/>	<hr/>	
	(1,484)	-		(1,236)	(300)	
Net current assets	<hr/>	<hr/>	<hr/>	<hr/>	<hr/>	<hr/>
	29,118	2,159	31,277	28,291	2,900	31,191

Trustees



23 April 2024

ILKLEY ARTS
YEAR ENDED 31ST DECEMBER 2023

1 Accounting policies

The accounts have been prepared in line with the applicable Charity Law in the Jurisdiction of registration. Ilkley Arts has adopted FRS 102 and the Charities SORP.

The Charity is exempt from the requirement to prepare a cashflow.

The Charity is under the threshold required for independent examination.

2 Transfer of Business

On the 1st May 2016 the assets and liabilities of Ilkley Art Trail transferred to Ilkley Arts.

3 Grants and Donations

	2023 Unrestricted funds £	2023 Restricted funds £	2023 Total funds £	2022 Total funds £
Grants				
BMDC Resilience grant	-	670	670	3,200
	<u>-</u>	<u>670</u>	<u>670</u>	<u>3,200</u>

Restricted funds - 2023

	Balance b/f £	Incoming £	Outgoing £	Transfers £	Balance c/f £
BMDC Resilience grant	2,790	670	(1,301)	-	2,159
	<u>2,790</u>	<u>670</u>	<u>(1,301)</u>	<u>-</u>	<u>2,159</u>

Restricted funds - 2022

	Balance b/f £	Incoming £	Outgoing £	Transfers £	Balance c/f £
BMDC Resilience grant	-	3,200	(410)	-	2,790
	<u>-</u>	<u>3,200</u>	<u>(410)</u>	<u>-</u>	<u>2,790</u>

Fund name

Purpose of restriction

BMDC Resilience grant

Build resilience so that we can further support our charitable aims into the future.

ILKLEY ARTS

England & Wales - Charity number 1163861

Accounts

**ILKLEY ARTS
REGISTERED CHARITY
NUMBER
1163861**

UNAUDITED ACCOUNTS

FOR THE PERIOD TO 31ST DECEMBER 2022

**ILKLEY ARTS
YEAR ENDED 31ST DECEMBER 2022**

	Pages
Trustees Report	3 to 5
Income and Expenditure Account	6
Balance Sheet	7

Trustee Report 2022

Following the global Covid pandemic and associated lockdowns and other restrictions on our operations, 2022 allowed us to get back to a new normal in terms of how we operated the art studio, supported our members and promoted and celebrated the arts locally.

We deployed some of our Covid grant money to run our bursary scheme for its second year, with one bursary awarded, and we completed our yearlong young artist scholarship scheme, which had been running since May 2021. This culminated in an exhibition in Ilkley Manor House.

Art Studio

We reopened our art studio fully during 2022, with Art School Ilkley back up to full capacity and thriving.

Several members and non-members booked the studio for workshops, including Kathryn Fox's ever popular screen-printing workshops.

Artist in the Attic

Ilkley Arts has continued to provide a flexible and affordable space for early career artists to access with the Artist in the Attic scheme. Over the period, the space has been fully let by four different artists working with signwriting, textiles, printing, paint and art therapy sessions. Each artist has opened up the studio for exhibitions and engaged with the wider community. This space has provided a comfortable place for artists to develop their practice away from their homes and has formed an important step in their development.

Membership Scheme

Following the payment holiday we offered in 2021, we recommenced collecting membership subscriptions in January 2022. Seven members chose not to renew and we had ten new members join during the year. We ended the year with 68 members.

Members' meetings this year have included Joanne Tinker and Louise Hepworth-Wood talking about what they learnt about marketing from running their *Take Flight* exhibition; John Gamble discussing his research into art education; Pippa Hamilton and Sarah Gamble presenting their emotional *Pause* exhibition; and around 30 members enjoyed a *Sorta-Pecha-Kucha* evening, where six members gave short talks on a range of fascinating topics.

ILKLEY ARTS YEAR ENDED 31ST DECEMBER 2022

In October, the members held their own pop-up exhibition as part of the Ilkley Creative Quarter event led by the Ilkley Manor House Trust, and we enjoyed other member exhibitions in the studio such as Lucia Smith's *Landscapes* in July. Members were treated to exclusive private views at the Manor House, such as Dorothy Bradford's exhibition, and a private shopping evening at the Christmas fair. We kept our members informed of events throughout the year such as the unveiling of *Stitchytales'* (Aneeta Seshan) Ilkley Map and Mark Butler's wonderful *Art Forms in Nature* exhibition at Tinker Gallery.

The programme of member events for 2023 will likely include members Juliet Gutch and Clare Dearnaley presenting their learning from the multi-media *Dovetailing* exhibition and a variety of member workshops and mentoring, which has been programmed in response to feedback from members. This programme covers areas such as painting, social media and marketing, a peer critique and coaching.

Other public events planned for 2023 include a silent auction fundraiser, which has proved successful and popular in the past, and the launch of an open art exhibition.

Financial position

Overall, we made a small loss in 2022. Our income increased due to higher volumes of studio rentals and the recommencement of collecting membership subscriptions. This partly offset increases in rent and service charges. We continue to subsidise the studio and attic space in support of our charitable aims.

Partnership working

Ilkley Arts continued to develop key partnerships during 2022, including contributing to the Ilkley Cultural Cooperative and joining planning meetings for Bradford UK City of Culture for 2025.

During the year, Ilkley Arts explored its partnering arrangements with Ilkley Manor House Trust, including considering merging the two charities. In November both trustee boards decided against a merger but agreed that it would benefit both organisations to set out a formal closer working arrangement. We now agree a Memorandum of Agreement to reflect specific areas of collaboration.

Ilkley Arts continues to work closely with Art School Ilkley which runs regular courses and one-off workshops. Over the year they worked with over one hundred local people who were able to engage in creative activities. Ages range from eleven to over seventy.

**ILKLEY ARTS
YEAR ENDED 31ST DECEMBER 2022**

Future

After many years of energetic and dedicated leadership, Sarah Thomas stepped down from the Trustee board and as Ilkley Arts Chair of Trustees. The remaining trustees – Jeremy Lewis, Joanne Tinker and newly appointed Kathryn Fox - thank her enormously for her unstinting commitment to making Ilkley Arts the organisation it is today. We intend to strengthen the trustee board in 2023.

The trustees are supported by a Members' Advisory Committee, chaired by John Gamble with Nadine Blakemore, Sarah Gamble and Louise Hepworth-Wood alongside the trustees. This was formed early in 2022 and has proved invaluable to engage with members and energise our programme of events.

Conclusion

2022 was a year of change as the world returned to a new normal following the Covid pandemic. We have re-opened and re-energised Ilkley Arts and are well placed to continue delivering our charitable aims in 2023.

Ilkley Arts Board of Trustees



6th April 2023

Trustees

Sarah Thomas	Chair (Resigned 8 th November 2022)
Jo Tinker	
Jeremy Lewis	
Kathryn Fox	(Appointed 3 rd March 2022)

Structure and Governance

The Charity is a CIO registered 6th October 2015

Principal address

8 Craiglands Park
Ilkley
LS29 8SX

ILKLEY ARTS
YEAR ENDED 31ST DECEMBER 2022

Statement of Financial Activities

	Year to 31st December 2022			Year to 31st December 2021	
	£	£	£	£	£
	Unrestricted	Restricted	Total	Unrestricted	Total
Incoming Resources					
Grants and Donations					
BMDC Covid Rates Grant	-	3,200		23,277	
Donations	-	-		11	
	-	3,200	3,200		23,288
Income generated					
Artists Commission	41	-		190	
Membership fees	3,245	-		1,144	
Studio rental	5,835	-		4,805	
Gift Aid	-	-		528	
	9,121	-	9,121		6,667
Interest received					-
Total Incoming Resources	9,121	3,200	12,321	29,955	
Resources Expended					
Bursary	975	-		3736	
Arts Scholarship	1,650	-		2475	
Insurance	96	-		98	
Membership costs	169	-		-	
Design and print	191	-		236	
Website and marketing	484	-		311	
Websales costs	-	-		210	
Arts Studio - rent and rates	10,249	-		8,470	
Arts Studio - overheads	221	-		353	
Arts Studio - other costs	1,225	-		1,054	
Professional fees	413	300		284	
Sundry	0	110		-	
Total Resources Expended	15,673	410	16,083	17,227	17,227
Net movement in funds	(6,552)	2,790	(3,762)	12,728	12,728
Funds of the Charity					
Funds brought forward	34,953	-	-	22,225	22,225
Funds carried forward	28,401	2,790	31,191	34,953	34,953

**ILKLEY ARTS
YEAR ENDED 31ST DECEMBER 2022**

Balance Sheet

	31st December 2022			31st December 2021		
	£	£	£	£	£	£
	Unrestricted	Restricted	Total	Unrestricted	Restricted	Total
Current assets						
Bank Current Account	29,082	3,200		34,800	-	
Debtors and Prepayments	445			580	-	
	<hr/>			<hr/>		
Total Assets	29,527	3,200		35,380	-	
Current liabilities						
Trade Creditors	(1,236)	(300)		(427)	-	
	<hr/>	<hr/>		<hr/>	<hr/>	
	(1,236)	(300)		(427)	-	
Net current assets	<hr/>	<hr/>	<hr/>	<hr/>	<hr/>	<hr/>
	28,291	2,900	31,191	34,953	-	34,953

Trustees



DATE

6th April 2023

ILKLEY ARTS

YEAR ENDED 31ST DECEMBER 2022

1 Accounting policies

The accounts have been prepared in line with the applicable Charity Law in the Jurisdiction of registration. Ilkley Arts has adopted FRS 102 and the Charities SORP.

The Charity is exempt from the requirement to prepare a cashflow.

The Charity is under the threshold required for independent examination.

2 Transfer of Business

On the 1st May 2016 the assets and liabilities of Ilkley Art Trail transferred to Ilkley Arts.

3 Grants and Donations

	2022 Unrestricted funds £	2022 Restricted funds £	2022 Total funds £	2021 Total funds £
Grants				
BMDC COVID Rates Grant		-		23,277
BMDC Resilience grant	-	3,200	3,200	
	<u>-</u>	<u>3,200</u>	<u>-</u>	<u>23,277</u>

Restricted funds

	Balance b/f £	Incoming £	Outgoing £	Transfers £	Balance c/f £
BMDC Resilience grant	-	3,200	(410)	-	2,790
	<u>-</u>	<u>3,200</u>	<u>(410)</u>	<u>-</u>	<u>2,790</u>

Fund name

Purpose of restriction

BMDC Resilience grant

Build resilience so that we can further support our charitable aims into the future.

ILKLEY ARTS

England & Wales - Charity number 1163861

Accounts

**ILKLEY ARTS
REGISTERED CHARITY
NUMBER
1163861**

UNAUDITED ACCOUNTS

FOR THE PERIOD TO 31ST DECEMBER 2021

**ILKLEY ARTS
YEAR ENDED 31ST DECEMBER 2021**

	Pages
Trustees Report	3 to 7
Independent Examiners Report	10
Income and Expenditure Account	11
Balance Sheet	12

**ILKLEY ARTS
YEAR ENDED 31ST DECEMBER 2021**

Trustee Report 2021

2021 continued to be a very different year from the norm for Ilkley Arts.

All the normal activities were interrupted because of the pandemic with the studio being closed to the public for most of the year. The government support to rate-paying organisations continued to be invaluable.

The Ilkley Arts board considered the best approach to the use of the grant monies it had received and agreed to focus support to artists and in turn to the wider community by investing in two major new areas – the Ilkley Arts Bursary scheme and the Ilkley Arts Young Artist Scholarship Scheme.

Ilkley Arts Bursary Scheme

Ilkley Arts bursary scheme was launched during February 2021 and in March 2021 six awards to projects were announced.

The successful applications covered research into art education, development of textiles in a fine art context, creation of new young persons' metal art courses, looking at how best to market art exhibitions, an exploration of music, balance and listening and the final project is to explore correspondence practice as a form of conversational art.

The board were impressed by the range and quality of the submissions received. A number of the bursaries will lead to exhibitions for the community to enjoy in 2022 and all the recipients will share their learning with the Ilkley Arts members too. Wider sharing of this learning is also being considered.

ARTIST	TITLE
John Gamble	Is there an alternative to established art school education?
Juliet Gutch and Clare Dearnaley	Dovetailing
Pippa Hamilton and Sarah Gamble	Exploring the nature of the relationship between textiles and fine art
Melanie Shearn	Sunsent – a conceptual longitudinal artwork developed from correspondence
Libby Jubb	Equipment for teaching metal work to young artists
Louise Hepworth Wood and Joanne Tinker	Marketing support for an exhibition


ILKLEY ARTS YEAR ENDED 31ST DECEMBER 2021

Louise Hepworth-Wood and Joanne Tinker held their very successful joint exhibition in the Ilkley Arts studio on 5-6 June.

A second installation from the bursary scheme was *Dovetailing* which was led by Clare Dearnaley and Juliet Gutch. The Manor House was used as the venue for the installation over the weekend of 3 – 6 October.

The *Dovetailing* installation followed a previous installation in June 2021 where artists were invited to respond to the first iteration of the work. These responses formed the basis of the installation in the Manor House.

The work is now destined for the Orkneys and potentially even further afield.



Dovetailing Responses

**November 4 - 7
Ilkley Manor House**

Exhibition timetable

Thursday November 4th
6 - 8pm opening event, all welcome
Special composition played by Bring me Sunshine Trio and the launch of smartphone app by Simon East.

Friday November 5th
Installation & gallery of responsive work open 10 - 6pm with interactive smartphone app

Saturday November 6th
Installation & gallery of responsive work open 10 - 6pm with interactive smartphone app and music improvisation by Kerry McMullen
NB: Exhibition closed for workshop 11 - 12
3.30pm Poetry reading hosted by Ian Duhig

Sunday November 7th
Installation & gallery of responsive work open 10 - 4pm with interactive smartphone app
10.30 - 12.30pm dance improvisation by Matti Torres
2 - 4pm music from Bring me Sunshine Trio

The installation & activities will be on the ground floor (accessible), the visual arts responses in The Western Gallery upstairs (no disabled access).

Contributors

Sally Beamish
Mark Carey
Clare Dearnaley
Ian Duhig
Simon East
Mike Farren
Alice Fox
Kathryn Fox
John Gamble
Sarah Gamble
Les Goldman
Jamie Gutch
Juliet Gutch
Keely Hodgson

Lorna Jewitt
Tracey Martin
Kerry McMullen
Sophie Renshaw
Rachel Sedman
Ian Smith
Kerry Stoker
Emma Storr
Mati Torres
Karen Vaughan
Sophie Wallace
Jackie Waring
Clare Wigzell
Fiona Williams

Exhibition Programme

Experiments in creative collaboration

An exhibition combining film, music and mobile sculpture with visual arts, poetry, dance, live music and interactive soundscape.

Dovetailing Responses hopes to evolve into resonating layers of interaction.

Take your own path through an immersive forest-like installation by sculptor Juliet Gutch and filmmaker Clare Dearnaley with music by composer Sally Beamish. The Manor House will be full of light, movement, shadows and sound.

www.dovetailing.co.uk

The first *Dovetailing* exhibition took place in June 2021 and responded to how notes are drawn out of silence, beginning with a tree, to the selection of the wood, to the instrument maker, the music and finally to the audience.

This next installation involves further layers of listening and collaboration with responsive work happening all weekend. Coinciding with the UN Climate Change conference, COP26, it aims to explore how interactions made with care can give hope to redefining a balance with nature.

There will be a guided workshop with Ilkley Literature Festival Poet in Residence Ian Duhig, who will also be writing a series of responsive poems, reactive work led by Art School Ilkley, and an opportunity to create your own movement sensitive audio track using a smartphone app and sound design from the exhibition.

"That it all begins with wood is a resonant idea, given our deep affection for ancient trees. If we love what grows silently in our midst, how could we not love what is made from it?"
Professor Tom Shakespeare

No booking required, just turn up!
Numbers may be limited if it gets busy
Ilkley Manor House, Castle Yard LS29 9DT

Free entry
Donations to
Climate Action Ilkley

Supported by
Ilkley Arts
The Manor House Trust
The Ronnie Duncan Art Foundation
Outside the Box

There are other exhibitions planned for 2022 with Sarah Gamble and Pippa Hamilton exhibiting in the Ilkley Arts Studio the weekend of June 10th to 12th 2022 and there is the launch of *Sunsent* during 2022 planned too.

Ilkley Arts Young Artist Scholarship Scheme

Ilkley Arts launched the Ilkley Arts Young Artist Scholarship scheme in May 2021. Ten young artists aged from 11 – 18 were selected to spend a year of weekends developing their artistic practice and understanding.

ILKLEY ARTS YEAR ENDED 31ST DECEMBER 2021

The scholarship programme is a year-long, all expenses paid, supportive experience for ten successful students who wish to develop their artistic skills. The students came from both Ilkley Grammar School and the Beckfoot Academy Trust, Bradford.

The programme includes mentoring, teaching, inspiration and encouragement in exploring and developing the students' creative skills by supporting the successful candidates own interests within all aspects of Art and Design – Drawing, Painting, Graphic Design, Textiles, Three-Dimensions, Photography.

We had hoped that during the year the students would go on gallery visits but unfortunately Covid prevented this aspect of the programme from happening. However, two exhibitions celebrating the students' achievements were planned. The first of these was held in December in the studio and it attracted an audience of 70 people over the two days.

The end of year installation is planned in the Manor House in May 2022. Work is now underway to recruit to the second cohort of the scheme.

Ilkley Arts Membership scheme

We started the year with 51 members. Due to the restrictions on events and availability of the studio arising from the Covid pandemic, we offered a payment holiday from 1 May to 31 December 2021. During the year, 14 new members joined.

In May we were able to reopen the studio with Covid restrictions including face coverings and limited numbers.

We held a few members' networking sessions and a members' exhibition in the studio in October.

Mike Smith

During 2021 Ilkley Arts lost one of its long-standing members and a great supporter of Ilkley Arts. Mike Smith died in the summer and many Ilkley Arts members attended his funeral in Addingham on 23 July. It is hoped that Ilkley Arts will be able to celebrate his work and contribution at some point in the future.

Discover Ilkley Arts online shop

Ilkley Arts continues to support its members by covering the costs of the annual website subscription for the online shop.

<https://www.discoverilkleyart.co.uk/>

**ILKLEY ARTS
YEAR ENDED 31ST DECEMBER 2021**

Ilkley Arts Studio

The studio is managed by Art School Ilkley who also use the space as the base for their art school. Art School Ilkley has provided classes outside, utilising the Manor House courtyard, which has allowed students to attend art sessions during the pandemic. Ilkley Arts purchased two canopies which enabled classes to continue during this period.

They have provided a full timetable of regular classes, running a total of eight weekly sessions, working with over eighty students each week. Attendees are from a wide area, travelling from Leeds and Bradford for the weekly classes and nationally for the weekend workshops. A total of ten full day workshops were held, exploring printing, life drawing, mixed media and stitch. Students age ranges from ten to over 80 years old.

Students from Art School Ilkley have engaged with Ilkley Arts through the membership scheme and gone onto hold their own workshops and exhibitions in the studio and Ilkley Manor House.

<https://www.artschoolilkley.co.uk>

In addition to Art School Ilkley, 14 workshops and a number of exhibitions were hosted in the studio during 2021 during periods when these were permitted. Over 500 people attending the studio during this period.

Dates	Exhibition/exhibitors
4 – 6 June	Take Flight Louise Hepworth-Wood and Joanne Tinker
3 - 4 July	Tara Joy and Sue Lawless
17 - 18 July	Helen Brayshaw
13 – 15 August	Jo Dexter
28 - 29 August	Picnic in the Park Photographic exhibition supporting the Friends of Riverside Park
9 - 10 October	Ilkley Arts Hub members exhibition
15 – 17 October	Jackie Waring
30 - 31 October	John Gamble and Joe Gamble
17 – 19 December	Kwan Bevan

**ILKLEY ARTS
YEAR ENDED 31ST DECEMBER 2021**

Artist in the Attic

Ilkley Arts has provided a flexible and affordable space for early career artists to access with the Artist in the Attic scheme. Over the period, the space has been fully let by five different artists working with print, stitch, signwriting, textiles and paint. Each artist has opened up the studio for exhibitions and engaged with the wider community. This space has provided a comfortable place for artists to develop their practice away from their homes and has formed an important step in their development. Ilkley Arts have maintained the space and added a large double sink.

ILKLEY ARTS YEAR ENDED 31ST DECEMBER 2021

Partnership working

Ilkley Arts has continued to develop key partnerships during 2021. Ilkley Arts has been a key player in the creation of the Ilkley Cultural Cooperative. A group which was formed during the first lockdown to be a forum for the key cultural organisations in Ilkley to share knowledge and expertise as well as exploring potential areas of future joint working.

The Chair of Ilkley Arts continues in her role on the steering group that are leading the Bradford UK City of Culture bid for 2025.

The productive partnership with Ilkley Literature Festival continues and there are plans to explore future creative ventures with the ILF in 2022 and beyond.

Ilkley Manor House coffee mornings featured a number of Ilkley Arts members (Lucia Smith, Mel Shearn and Sarah Gamble) talking about their work and how their practice has developed over their careers.

Ilkley Arts Future

A considerable effort has been made this year to seek views from the Ilkley Arts members about what they would like to see Ilkley Arts offering in the future. From this consultation which took place over several sessions in the year the key findings were that IA should provide a vehicle for networking and development, offer facilities for artists to exhibit their work and to commission activities to ensure the arts are brought to a wider audience.

Networking meetings 16 March and 9 April

As well as this consultation the IA board has been exploring the future organisational arrangements and following this discussion, the board agreed to pursue the idea of merging with Ilkley Manor House Trust. This work would be managed by one of the trustees, Jeremy Lewis as the Chair of Ilkley Arts has a conflict of interest as she also chairs the Ilkley Manor House Trust board.

The proposal from Ilkley Arts will now be put to the Ilkley Manor House Trust board in early 2022.

Conclusion

2021 has been another difficult year for the organisation with the reduced connection with the public and artists. However, the importance of creativity for so many during the lockdowns re-emphasises that the charitable aims of Ilkley Arts remain highly relevant.

**ILKLEY ARTS
YEAR ENDED 31ST DECEMBER 2021**

The use of the studio has increased both in terms of workshops and exhibitions as the year has progressed, which has been encouraging. The audiences returning to see the creative work of local artists as well as attending workshops stands the charity in good stead for 2022.

2022 will be a year of change for Ilkley Arts but the charitable endeavours it set out to deliver in 2015 remain as valid now, if not more so, than they did then.

Sarah Thomas
Chair
Ilkley Arts Board of Trustees

Sarah Thomas

April 2022

Trustees

Sarah Thomas Chair
Jo Tinker
Jeremy Lewis
Kathryn Fox (appointed 3rd March 2022)

Structure and Governance

The Charity is a CIO registered 6th October 2015

Principal address

11 Wheatley Avenue
Ilkley
LS29 8PT

**ILKLEY ARTS
YEAR ENDED 31ST DECEMBER 2021**

Independent Examiner's Report

Respective responsibilities of trustees and examiner

It is my responsibility to:

- examine the accounts under section 145 of the Charities Act,
- to follow the procedures laid down in the general Directions given by the Charity Commission (under section 145(5)(b) of the Charities Act, and

Basis of Independent Examiner's Statement

My examination was carried out in accordance with general Directions given by the Charity Commission. An examination includes a review of the accounting records kept by the charity and a comparison of the accounts presented with those records. It also includes consideration of any unusual items or disclosures in the accounts and seeking explanations from the trustees concerning any such matters. The procedures undertaken do not provide all the evidence that would be required in an audit, and consequently no opinion is given as to whether the accounts present a 'true and fair' view, and the report is limited to those matters set out in the statement below.

Independent Examiner's Statement

In connection with my examination, no matter has come to my attention:

1. which gives me reasonable cause to believe that in, any material respect, the requirements:
 - to keep accounting records in accordance with section 130 of the Charities Act; and
 - to prepare accounts which accord with the accounting records and comply with the accounting requirements of the Charities Act have not been met; or
2. to which, in my opinion, attention should be drawn in order to enable a proper understanding of the accounts to be reached.

Signed



11/4/22

ILKLEY ARTS
YEAR ENDED 31ST DECEMBER 2021

Statement of Financial Activities

	Year to 31st December 2021		Year to 31st December 2020	
	£	£	£	£
Incoming Resources				
Grants and Donations				
Ilkley Parish Council (Restricted Grant)	-		2,000	
BMDC Covid Rates Grant	23,277		20,000	
Donations	11		540	
		23,288		22,540
Income generated				
Artists Fees	-		-	
Artists Commission	190		234	
Nell Bank	0		-	
Other charitable activities	0		480	
Membership fees	1,144		2,327	
Studio rental	4,805		2,026	
Gift Aid	528		260	
		6,667		5,327
Interest received				-
Total Incoming Resources		29,955		27,867
Resources Expended				
Bursary	3,736		0	
Arts Scholarship	2,475		0	
Insurance	98		-	
Design and print	236		38	
Venue and equipment	-		771	
Website and marketing	311		446	
Other event costs	-		2,359	
Websales costs	210		1,210	
Arts Studio - rent and rates	8,470		7,386	
Arts Studio - overheads	353		209	
Arts Studio - other costs	1,054		795	
Book keeping	284		100	
Sundry	-		-	
		17,227		13,314
Net movement in funds		12,728		14,553
Funds of the Charity				
Unrestricted Funds				
Unrestricted Funds brought forward		22,225		7,672
Unrestricted Funds carried forward		34,953		22,225
Restricted Funds		-		-
Total Funds carried forward		<u>34,953</u>		<u>22,225</u>

**ILKLEY ARTS
YEAR ENDED 31ST DECEMBER 2021**

Balance Sheet

	31st December 2021		31st December 2020	
	£	£	£	£
Current assets				
Bank Current Account	34,800		23,335	
Debtors and Prepayments	580		550	
	<hr/>		<hr/>	
Total Assets	35,380		23,885	
Current liabilities				
Trade Creditors	(427)		(1,660)	
Other Creditors	-			
	<hr/>		<hr/>	
	(427)		(1,660)	
Net current assets		<u>34,953</u>		<u>22,225</u>

Sarah Thomas
DATE 11/4/22

ILKLEY ARTS
YEAR ENDED 31ST DECEMBER 2021

1 Accounting policies

The accounts have been prepared in line with the applicable Charity Law in the Jurisdiction of registration. Ilkley Arts has adopted FRS 102 and the Charities SORP.

The Charity is exempt from the requirement to prepare a cashflow.

The Charity is under the threshold required for independent examination.

2 Transfer of Business

On the 1st May 2016 the assets and liabilities of Ilkley Art Trail transferred to Ilkley Arts.

3 Grants and Donations

	2021 Unrestricted funds £	2021 Restricted funds £	2021 Total funds £	2020 Total funds £
Grants				
Ilkley Town Council	-	-	-	2,000
BMDC COVID Rates Grant	23,277	-	23,277	20,000
Donations				
Other Donations	-	-	-	540
	<u>23,277</u>	<u>-</u>	<u>23,277</u>	<u>22,540</u>

Restricted funds

	Balance b/f £	Incoming £	Outgoing £	Transfers £	Balance c/f £
Ilkley Town Council	-	-	-	-	-
	<u>-</u>	<u>-</u>	<u>-</u>	<u>-</u>	<u>-</u>

Fund name

Purpose of restriction

Ilkley Town Council

Support for Digital Festival costs in 2020

ILKLEY ARTS

England & Wales - Charity number 1163861

Accounts

**ILKLEY ARTS
REGISTERED CHARITY
NUMBER
1163861**

UNAUDITED ACCOUNTS

FOR THE PERIOD TO 31ST DECEMBER 2020

**ILKLEY ARTS
YEAR ENDED 31ST DECEMBER 2020**

	Pages
Trustees Report	3 to 7
Independent Examiners Report	10
Income and Expenditure Account	11
Balance Sheet	12

Trustee Report 2020

2020 was an extraordinary year for all of us and the impact on a small charity like Ilkley Arts has been considerable.

All our normal activities ceased from the March 2020 with the studio being closed to the public and the planned Castle Yard Arts Festival which was due to take place in October 2020 having to be cancelled too.

The government support to rate-paying organisations was invaluable and allowed us to continue to keep the art studio during the lockdown.

Ilkley Arts was still keen to offer some uplifting activities to the public and to support the hard hit artistic community and so decided during the summer of 2020 to switch the arts festival planned for October 2020 to a digital event with some in person activities if these were permitted.

This event was called Castle Yard Digital Arts Festival. We had by this time been given a grant by Ilkley Town Council to support the original arts festival and we agreed with them to switch this grant to support the digital event instead which allowed us the opportunity to purchase some digital equipment and create some great marketing materials.

Background to the Castle Yard Digital Arts Festival

Analysing the footfall from the 2018 Art Trail it was clear that a strong focus of the Trail had been the Manor House and studios around the courtyard with that area accounting for over 50% of the footfall of the entire Trail.

Ilkley Arts board agreed that we needed to refresh the Trail and so plans emerged to hold an arts festival in the Manor House and surrounding area in 2020. Plans were well underway but then in 2020 the country was put into lockdown due to the Covid 19 pandemic.

The decision was taken to refocus the festival planned for October 2020 as a digital festival with some in person activities where these were permitted.

Summary of Castle Yard Digital Arts Festival

The Castle Yard Digital Arts Festival ran on 10 and 11 October 2020



The Festival focused on around 40 of the Ilkley Arts members and their work and the programme (below) involved live streamed interviews and discussions on Facebook. The weekend also hosted a round table discussion again streamed live on Facebook about the future shape of the cultural organisations in Ilkley post the Covid19 lockdown.

Link to roundtable discussion session- -
<https://www.facebook.com/IlkleyArts/videos/382265449817464>

**ILKLEY ARTS
YEAR ENDED 31ST DECEMBER 2020**

CASTLE YARD ARTS FESTIVAL **PROGRAMME**

<p>SATURDAY 10/10/2020</p> <p>11:00 - 12:30 (facebook)</p> <p>HOST: Sarah Thomas</p> <p>CHATTING WITH ARTISTS: Caroline Hudson / MelAnie</p> <p>ALSO FEATURING: Caroline Smith / Louise Hepworth-Wood / Art School Ilkley</p>	<p>SATURDAY 10/10/2020</p> <p>13:00 - 16:00 (facebook)</p> <p>HOST: Louise-Hepworth Wood / Jeremy Lewis</p> <p>CHATTING WITH ARTISTS: John Gamble / Rebecca Carr / Lucia Smith</p> <p>ALSO FEATURING: Chris Bailey / Jackie Knight / Kathryn Fox / Jo Tinker / Clare Dearmaley / Richard Miller / Jackie Waring / Debi Roberson / Libby Jubb / Kerry Stoker</p>	<p>DRAWING CHALLENGE</p> <p>Saturday 10 October 2020 11pm to 1pm & 2pm to 4pm Manor House Courtyard.</p> <p>EVENT DESCRIPTION: Be prepared to draw things you can see, things from your imagination and from your memory. Your drawings will then become part of the online celebration of Castle Yard Festival of the Arts.</p>
<p>SUNDAY 11/10/2020</p> <p>11:30 - 13:00 (facebook)</p> <p>HOST: Lucia Smith</p> <p>CHATTING WITH ARTISTS: Laura Dawes</p> <p>ALSO FEATURING: Felicja Nattress / Howard Gardiner / Pippa Hamilton / Lyndsey Jayne Gough / Art School Ilkley</p>	<p>SUNDAY 11/10/2020</p> <p>14:00 - 15:30 (facebook)</p> <p>HOST: Sarah Thomas / Ruth Pitt</p> <p>ROUNDTABLE DISCUSSION: Ruth Pitt, Media consultant and executive Chair of Leeds 2023 hosts a roundtable discussion about the future of the creative sector in Ilkley, with representatives from Ilkley Literature Festival, Ilkley Playhouse, Ilkley Manor House, Bradford Council, Upstagers and Ilkley Arts</p> <p>ALSO FEATURING: Vanessa Plews / Frances Taylor</p>	<p>SOUNDSCAPE AND DANCE</p> <p>Sunday 11 October 2020 11am - 1pm Manor House Courtyard.</p> <p>EVENT DESCRIPTION: Mati Torres, a contemporary dancer and Ben Walker, a soundscape artist will create an improvised sound and movement piece.</p>
<p>SELFIE COMPETITION</p> <p>Post to #CYartsfest. Prize - £50 voucher from Art Shop Ilkley</p>		<p>CYAF ART EXHIBITION</p> <p>Saturday 10th and Sunday 11th October 2020, 11am - 4pm in the Manor House</p> <p>EVENT DESCRIPTION: Showcasing work of all artists involved in the festival. Admission is free and all the works are for sale.</p>

Ilkley Arts
#cyartsfest

Roundtable discussion
The future of the creative sector in Ilkley

CASTLE YARD ARTS FESTIVAL

14:00 - 15:30
Sunday 11 October 2020

Ruth Pitt, Media consultant and executive Chair of Leeds 2023 hosts a roundtable discussion about the future of the creative sector in Ilkley, with representatives from:
Ilkley Literature Festival, Ilkley Playhouse, Ilkley Manor House, Bradford Council, Upstagers and Ilkley Arts.

#cyartsfest
Watch the livestream on the Ilkley Arts Facebook Page

Technical input to support the Festival

The digital festival was a new venture for Ilkley Arts and our thanks go to Arts Council England digital champions who provided some invaluable support to

us in the run up the festival, to Jeremy Lewis, Ilkley Arts Trustee who worked tirelessly to bring his skills up to speed to run the studio set-up for the festival and to the artists who were involved in the interviews, making films about their work and running the live sessions during the weekend.

Many of the interviews and films are still available on the Ilkley Arts Facebook page and are being used by the artists on their own marketing platforms.

<https://www.youtube.com/watch?v=ZhQ5jrUh7LY>

In person events during the Festival

Though the majority of the Festival was online Art School Ilkley also run a drawing challenge on the Saturday and a dance, draw and music event on the Sunday morning – again this was a new venture for the Ilkley Arts but was highly successful and will be something that we will repeat in future. Both events were held in the courtyard at the Manor House. The film (available via the link below) was created by Clare Dearnaley pro bono to Ilkley Arts.

https://vimeo.com/470610196?fbclid=IwAR1C_3lgoidwnGZUyjiR1b5zBkgOebvuHUbLI-jvMlc8xerFwisZ1KhIBzc

Other digital offers

At the time the Festival took place we were not certain if we would be able to allow the public into the Manor House to see the artists' work that was being exhibited. A filmmaker, Clare Dearnaley was commissioned to make a film of the exhibition in case the public were excluded. In the event the public were permitted to attend the exhibition and the film has become a record of the moment lockdown was announced as well as recording the exhibition. This film was used throughout the Festival.

<https://www.youtube.com/watch?v=FOfgQnbDdC8>

As part of the development of the digital arts festival Ilkley Arts purchased the online subscription for the first year of a new online shop to promote artists' work – *Discover Ilkley Art*. The online shop went live at the start of the festival.

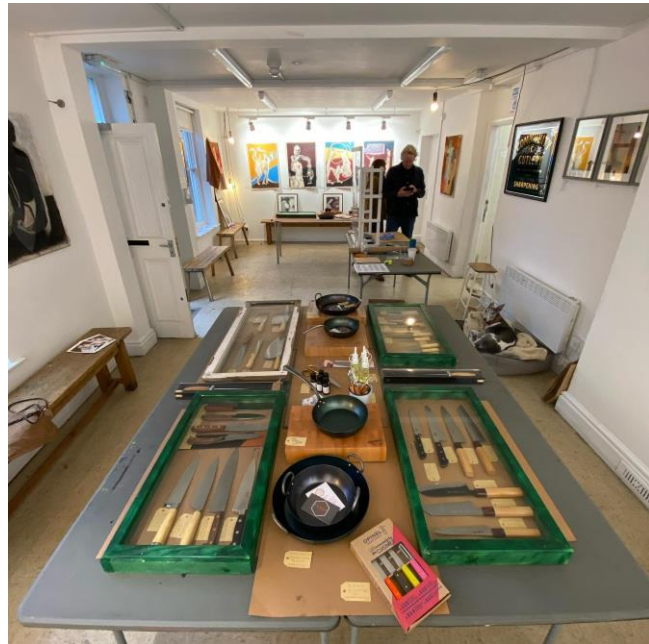
The site has now been further updated to incorporate the Solar Art Gallery whose home is in the eastern gallery of the Manor House and the merchandising for the Manor House.

<https://www.discoverilkleyart.co.uk/>

ILKLEY ARTS YEAR ENDED 31ST DECEMBER 2020

Pop up shops in December

2 pop up shops for local artists and contemporary makers were held in December in the Ilkley Arts studio – both were really successful events.



Partnership working

Ilkley Arts has continued to develop key partnerships during 2020. Ilkley Arts has been a key player in the creation of the Ilkley Cultural Cooperative. A group which was formed during the first lockdown to be a forum for the key cultural organisations in Ilkley to share knowledge and expertise as well as exploring potential areas of future joint working.

The chair of Ilkley Arts has joined the steering group of the team that are leading the Bradford UK City of Culture bid for 2025.

The productive partnership with Ilkley Literature Festival continues and there are plans to explore future creative ventures with the ILF in 2021 and beyond.

Art School Ilkley continues to be a key partner for Ilkley Arts and a new scholarship scheme for 11 – 18 years old students is planned for 2021. Ilkley Arts is also offering grants to artists to improve and develop their own practice and finance creative exhibitions and events.

Conclusion

2020 has been a difficult year for the organisation and the loss of connection with the public and artists has been hard. However, the importance of creativity for so many during the lockdowns re-emphasises that the charitable aims of Ilkley Arts are even more important as we return to a degree of normality.

The festival was a great success in terms of learning both for the Ilkley Arts team and the 40 artists that took part in event. Many of the artists are now using different techniques on their social media platforms as a result of the festival and the Ilkley Arts team are confident that digital content can be incorporated into any future events.

The online streamed events reached an audience of over 11K people. Though the individual interaction is hard to determine the event nevertheless reached a significant number of individuals which for a first-time digital festival we felt was a great success.

The grant from Ilkley Town Council allowed Ilkley Arts to create some eye-catching social media and film assets that we are sure played a part in driving viewers to the festival events. We were also able to purchase some key pieces of equipment that will continue to be used by artists and Ilkley Arts. Any future events run by Ilkley Arts will now include a digital element. Our thanks go to the Town Council for their continuing support of our organisation.

**ILKLEY ARTS
YEAR ENDED 31ST DECEMBER 2020**

2021 will continue to be a challenge but as the country starts to move towards a great degree of normality Ilkley Arts will be working to engage the public and artists in bringing creativity into everyone's lives.



Sarah Thomas
Chair
Ilkley Arts Board of Trustees
October 2021

Trustees

Sarah Thomas	Chair
Jo Tinker	
Jeremy Lewis	
Libby Jubb	Resigned 1 st September 2019

Structure and Governance

The Charity is a CIO registered 6th October 2015

Principal address

11 Wheatley Avenue
Ilkley
LS29 8PT

Independent Examiner's Report

Respective responsibilities of trustees and examiner

It is my responsibility to:

- examine the accounts under section 145 of the Charities Act,
- to follow the procedures laid down in the general Directions given by the Charity Commission (under section 145(5)(b) of the Charities Act, and

Basis of Independent Examiner's Statement

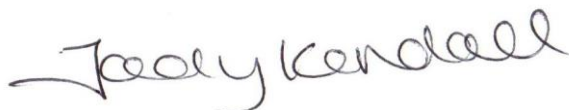
My examination was carried out in accordance with general Directions given by the Charity Commission. An examination includes a review of the accounting records kept by the charity and a comparison of the accounts presented with those records. It also includes consideration of any unusual items or disclosures in the accounts and seeking explanations from the trustees concerning any such matters. The procedures undertaken do not provide all the evidence that would be required in an audit, and consequently no opinion is given as to whether the accounts present a 'true and fair' view, and the report is limited to those matters set out in the statement below.

Independent Examiner's Statement

In connection with my examination, no matter has come to my attention:

1. which gives me reasonable cause to believe that in, any material respect, the requirements:
 - to keep accounting records in accordance with section 130 of the Charities Act; and
 - to prepare accounts which accord with the accounting records and comply with the accounting requirements of the Charities Act have not been met; or
2. to which, in my opinion, attention should be drawn in order to enable a proper understanding of the accounts to be reached.

Signed



**J Kendall ACA
21st October 2021**

ILKLEY ARTS
YEAR ENDED 31ST DECEMBER 2020

STATEMENT OF FINANCIAL ACTIVITIES
FOR THE PERIOD ENDED 31ST DECEMBER 2020

	Year to 31st December 2020		Year to 31st December 2019	
	£	£	£	£
Incoming Resources				
Grants and Donations				
Ilkley Parish Council (Restricted Grant)	2,000		-	
BMDC Covid Rates Grant	20,000		-	
Donations	540		2,002	
		22,540		2,002
Income generated				
Artists Fees	-		4,145	
Artists Commission	234		2,996	
Nell Bank	0		685	
Other charitable activities	480		722	
Membership fees	2,327		1,940	
Studio rental	2,026		5,045	
Gift Aid	260		1,023	
		5,327		16,556
Interest received				-
Total Incoming Resources		27,867		18,558
Resources Expended				
Insurance	-		554	
Design and print	38		2,907	
Venue and equipment	771		1,090	
Website and marketing	446		1,263	
Other event costs	2,359		2,478	
Websales costs	1,210		-	
Arts Studio - rent and rates	7,386		7,800	
Arts Studio - overheads	209		132	
Arts Studio - other costs	795		1,138	
Book keeping	100		180	
Sundry	-		308	
		13,314		17,850
Net movement in funds		14,553		708
Funds of the Charity				
Unrestricted Funds				
Unrestricted Funds brought forward		7,672		6,964
Unrestricted Funds carried forward		22,225		7,672
Restricted Funds		-		-
Total Funds carried forward		22,225		7,672

**ILKLEY ARTS
YEAR ENDED 31ST DECEMBER 2020**

**BALANCE SHEET
AS AT 31ST DECEMBER 2020**

	31st December 2020		31st December 2019	
	£	£	£	£
Current assets				
Bank Current Account	23,335		8,939	
Debtors and Prepayments	550		1,083	
	<hr/>		<hr/>	
Total Assets	23,885		10,022	
Current liabilities				
Trade Creditors	(1,660)		(2,350)	
Other Creditors	-		-	
	<hr/>		<hr/>	
(1,660)			(2,350)	
Net current assets		<u>22,225</u>		<u>7,672</u>



Sarah Thomas
October 2021

ILKLEY ARTS
YEAR ENDED 31ST DECEMBER 2020

Notes to the Accounts
AS AT 31ST DECEMBER 2020

1 Accounting policies

The accounts have been prepared in line with the applicable Charity Law in the Jurisdiction of registration. Ilkley Arts has adopted FRS 102 and the Charities SORP.

The Charity is exempt from the requirement to prepare a cashflow.
 The Charity is under the threshold required for independent examination.

2 Transfer of Business

On the 1st May 2016 the assets and liabilities of Ilkley Art Trail transferred to Ilkley Arts.

3 Grants and Donations

	2020 Unrestricted funds £	2020 Restricted funds £	2020 Total funds £	2019 Total funds £
Grants				
Ilkley Town Council	-	2,000	2,000	-
BMDC COVID Rates Grant	20,000	-	20,000	-
Donations				
Sir Rodney Brooke	-	-	-	2,000
Other Donations	540	-	540	2
	<u>20,540</u>	<u>2,000</u>	<u>22,540</u>	<u>2,002</u>

Restricted funds

	Balance b/f £	Incoming £	Outgoing £	Transfers £	Balance c/f £
Ilkley Town Council	-	2,000	2,000	-	-
	<u>-</u>	<u>2,000</u>	<u>2,000</u>	<u>-</u>	<u>-</u>

Fund name

Purpose of restriction

Ilkley Town Council

Support for Digital Festival costs