



ROMAN·ROADS·RESEARCH·ASSOCIATION

R·R·R·A

a charity registered in England and Wales, no. 1163854

[info@romanroads.org](mailto:info@romanroads.org)

# ANNUAL REPORT

2021-2022

# THE ANNUAL REPORT OF THE ROMAN ROADS RESEARCH ASSOCIATION

Registered charity no. 1163854

Principal address:

Ellerbeck Cottage, Ellerbeck, Northallerton, North Yorkshire

DL6 2RY

<https://romanroads.org>

[info@romanroads.org](mailto:info@romanroads.org)



# CONTENTS

From our Chairman, Mike Haken	1
The First Seven Years	3
2017	3
2018	4
2019	5
2020	6
2021	7
2022	8
Progress in 2022	9
Membership	9
Itinera	9
QGIS Guide	9
Geophysical surveys	9
Roads of Roman Britain	10
Looking Forwards	11
General Income and Expenditure	11
Itinera	11
Geophysical Survey and Excavation	11
Roads of Roman Britain	12
A Five Year Plan	13
Structure, Governance & Management	14
Ensuring our activities achieve our charitable aims	14
Organisational structure	15
Financial review	16
Trustees & Declaration	17

# OUR VISION & OUR MISSION



## FROM OUR CHAIRMAN, MIKE HAKEN

When the late Hugh Toller and myself established the Roman Roads Research Association as a charity in 2015, we had lofty ambitions. Before that, Roman roads studies in Britain had tended to attract people with much more enthusiasm than objectivity and archaeological knowledge. Perhaps worse, the objective of many researchers seemed to be merely to spot a 'new' Roman road and then move on to the search for the next one - what Hugh used to call 'archaeological trainspotting.' The result was that far too many spurious roads were claimed, often becoming entrenched in popular belief. Little wonder then that the subject was largely viewed with disdain by much of the archaeological profession.

Hugh and I wanted to change all that, and set up the Association with the goal of redrawing the map of Roman Britain with an in depth, objective and rigorous analysis of the entire network, including fieldwork on both Roman roads and adjacent Roman sites, mainly following the model set by work carried out in the early 2000s by the Archaeological Trusts in Wales. The plan was to cover the country one region at a time, enlisting teams of volunteers to assist in the work, and have the entire task completed by 2027. Sadly, Hugh became ill and passed away when the RRA was just a year old, but the Association survived. In the very early days, we set out to follow some basic rules.

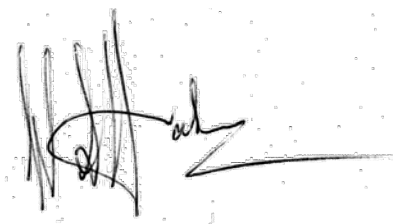
1. That we would seek to involve as many volunteers as possible in our work - that it was much about the experience and education of the people involved as it was about the archaeology.
2. That we would ensure that none of the Association's work was hidden behind an un-affordable paywall, making the results of our work available to all, without charge.
3. That all our work, whether data gathering and analysis, or excavation and geophysical survey, would be carried out, written up and reported to the highest possible standards.

In the six years since Hugh's death, we have achieved a great deal, always trying to maintain those three basic rules, and we certainly have much to be proud of.

- We set the ball rolling with extremely successful conferences in Portsmouth and York in 2016
- We have grown our membership from zero to 451 in just seven years, with many international members.
- Our members receive a substantial quarterly newsletter.
- We have established the Roads of Roman Britain Project, and interactive online gazetteer and database of all Roman roads in Britain
- Our fieldwork has been assisted by over 200 individual volunteers, many with no previous experience, some of whom are now working in archaeology full time or pursuing further education in the field.
- We now own our own 5 probe gradiometer array, and since 2018 have completed seventeen discreet surveys, with two more major projects ongoing - a total of 210 Hectares completed.
- We have excavated part of Dere Street Roman road, and an adjacent settlement, and have confirmed by excavation a previously unknown Roman temporary camp near Doncaster
- We have established our own peer reviewed journal, *Itinera*, entirely designed, compiled, edited and typeset by our members, the third volume being currently in preparation.

On the face of it, that all seems well and good, and it is certainly a major achievement, but its hard from that list to determine just how far we've gone towards achieving our objectives, and how far we still have to go. This Annual Report therefore attempts to set out not just to review the last twelve months, but to examine just how far our activities during the first seven years have gone towards achieving our objectives. It will not only illustrate our victories, but also our defeats, highlighting what has worked and most importantly what hasn't. Finally, it proposes that we develop a five year plan which when followed may help us achieve those lofty ambitions that Hugh and I set out with, seven years ago.

Best regards

A handwritten signature in black ink, appearing to read 'Mike Haken', with a long horizontal stroke extending to the right.

Mike Haken

Chairman



# THE FIRST SEVEN YEARS



ROMAN·ROADS·RESEARCH  
ASSOCIATION

is proud to host

## The Ivan D Margary Memorial Conferences 2016

Portsmouth 3<sup>rd</sup> & 4<sup>th</sup> September 2016  
York 12<sup>th</sup> & 13<sup>th</sup> November 2016

To celebrate the work and legacy of Ivan Donald Margary, the 20th century's most influential Roman roads researcher & historian, we bring together internationally renowned academics and Roman roads researchers to explore how we can better understand the Roman road network in Britain and the strategic planning that underpinned it.



Ivan Margary (1896 - 1976)

### OUTLINE PROGRAMME for PORTSMOUTH

#### Key themes of the conference:

- Ivan D Margary, the Man & his Legacy
- Recent research in Southern England
- New Technology, New Approaches
- Roman Roads Planning and Surveying
- Margary's Road Numbering System

#### Speakers include:

Professor Mike Fulford (University of Reading), Dr. M. C. Bishop, John Poulter, Professor Anthony King (University of Winchester), David Millum & Rob Wallace (The Culver Project), Rob Entwistle, Dr. John Peterson (University of East Anglia), David Staveley, Bryn Gethin (Warwickshire Archaeology), Mike Haken (RRRA), Graeme Erskine (University of Edinburgh)

*Sunday afternoon optional visit to Fishbourne Roman Palace, Margary's legacy*

£65 including lunch and refreshments on both days, Fishbourne visit £10  
Book at [www.romanroads.org/margarybooking](http://www.romanroads.org/margarybooking) or on adjacent form

Contact for queries: Mike Haken, Chairman, RRRA Tel: 07846 491151, 01457 872281  
Email: [mike@romanroads.org](mailto:mike@romanroads.org)



2016



2016 saw our two hugely successful Ivan D Margary Memorial Conferences in Portsmouth and in York

We partnered in FFWAP's excavation of a ladder settlement next to the supposed course of Roman road 810

2017





## THE GAZETTEER



Click on a region to select - North West and Yorkshire are active, North East due in 2019



Introduction & List Of Roads

Historical Background

# 2018

## A NEW ONLINE RESOURCE

### A Gazetteer

Launching with Yorkshire (964 miles, about 10% of the nation's Roman roads), the Gazetteer, when completed, will present the results of the first comprehensive survey of all Britain's Roman roads since Ivan Margary's final edition of "Roman Roads in Britain" in 1973. David Ratledge's famous Lancashire and Cumbria pages can still be accessed from here ([David Ratledge and Neil Buckley's Cheshire pages added - November 2018](#))

### Margary's Numbering System

An account of the system devised by Ivan Margary to number Britain's Roman roads, which the RRRA is now extending to cover all Roman roads discovered since Margary's death in 1976.

### A new interpretation of the British Section of the Antonine Itinerary

taking into account recent archaeological discoveries. The first major re-appraisal since Prof. A.L.F. Rivet's landmark work in the 1970s.

### A look at the British chapters of the Notitia Dignitatum

Including some new interpretations.

### Descriptions of the Peutinger Table, Ravenna Cosmography, Ptolemy's Geography

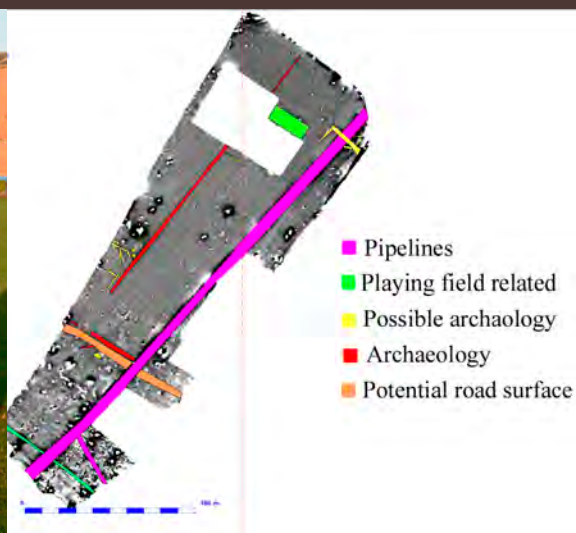
### A look at the story of De Situ Britanniae,

The document that would have been as invaluable to students of Roman Britain as the Antonine Itinerary, had it not been a hoax perpetrated by Charles Bertram in the 18th century.

### Glossary

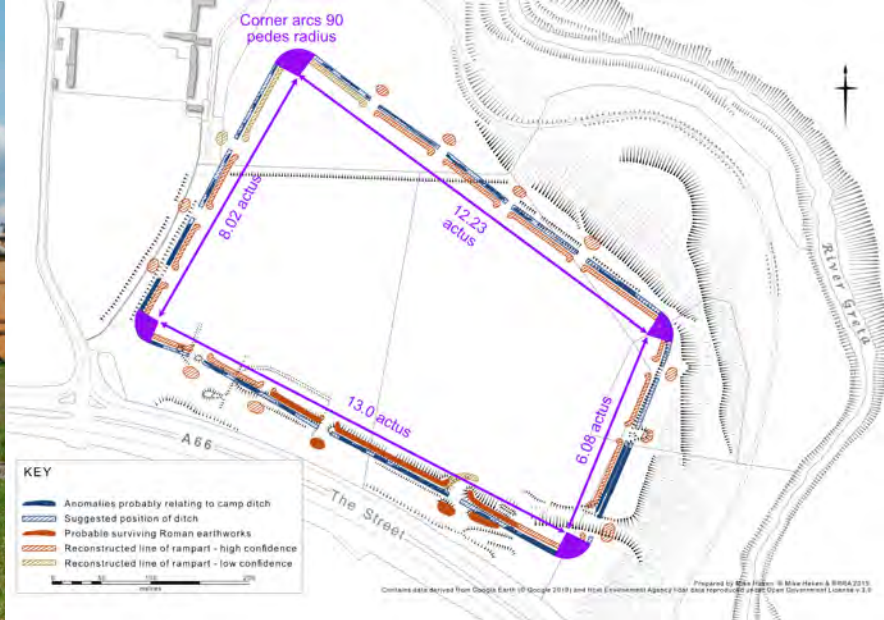
The Roads of Roman Britain project was launched, after two years background work, with Yorkshire and North West England added to the Gazetteer

James Lyall leading our first geophysics training in the grounds of the old Bootham Hospital, in York- most of those present still take part.





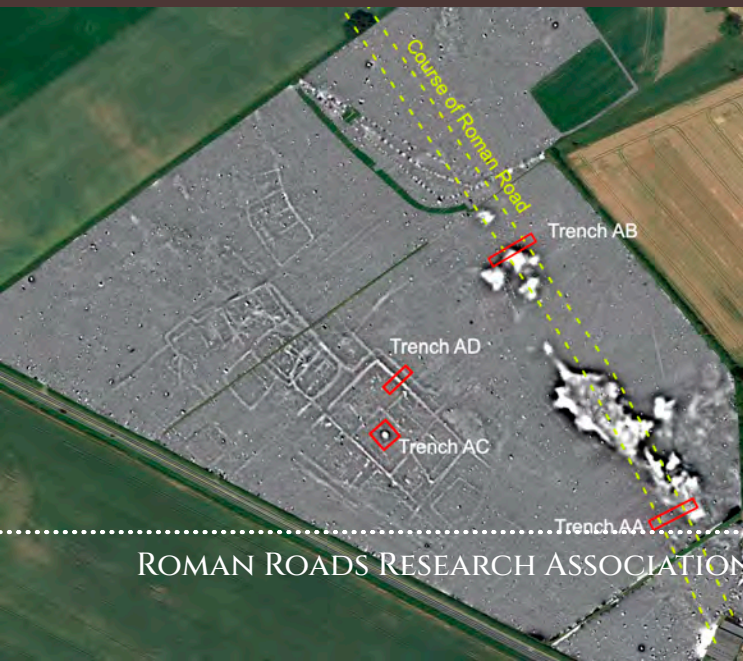
# 2019



Our new geophysics team was extremely busy. Here, our gradiometer survey at Rokeby Park, Co. Durham, confirmed the presence of an unusual Roman temporary camp, of the same group that includes Rey Cross and Crackenthorpe.

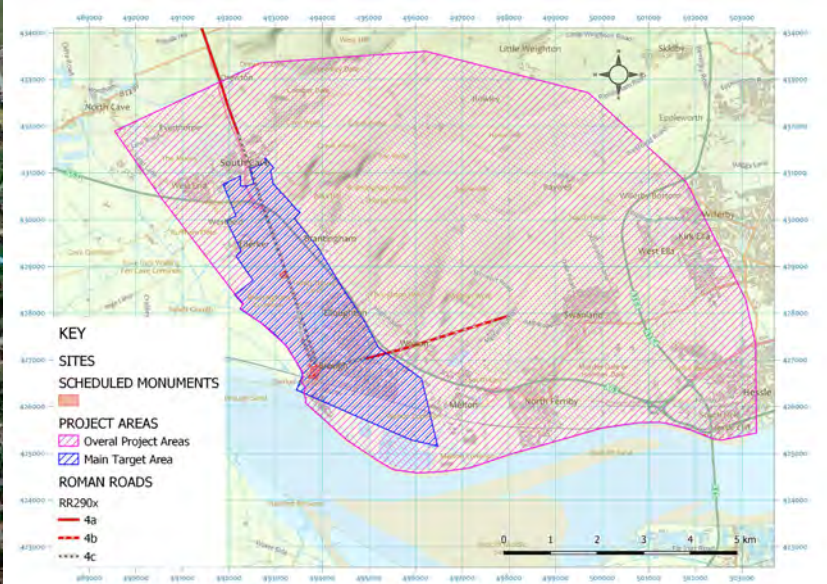


In challenging weather, we conducted surveys and excavation on Dere Street (RR8a) and an adjacent Romano British settlement. 110 volunteers took part, helping us better understand the road, we even found wheel ruts confirming the use of wheeled vehicles during its construction. We also confirmed that the settlement was of relatively high status.





2020



The 'Life Beyond the Town: Petuaria' project began, aiming to to examine the impact of the establishment of the Roman town on the surrounding landscape. Covid 19 restrictions allowed us to survey at Brough Gold Club whilst it was closed.

As part of our project examining the conquest period advance along what is now the A1 corridor north of Doncaster, surveys were conducted at Roelcliffe (Roman fort), Burton Leonard (not a Roman fort), with fieldwalking on a previously unknown extra-mural settlement in Yorkshire. Conditions may sometimes be awful, but our volunteers are always cheerful!





# ITINERA

VOLUME I  
2021



JOURNAL OF THE  
ROMAN ROADS RESEARCH ASSOCIATION

"A thousand roads lead men forever to Rome" *Alain de Lille, 1175*

Volume 1 of our peer reviewed journal, *Itinera*, was published. All the design, layout, compilation, editing and typesetting is done by a large team from our membership. This volume, like all *Itineras* to follow, was made open-access online after 12 months

2021

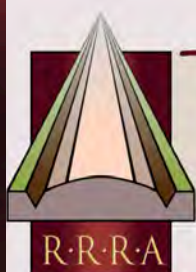


Work continued on our project examining the conquest period advance along the south to north corridor for 80 miles north of Doncaster, with excavation on one of two Roman temporary camps revealed by one of our geophysical surveys. The peculiar feature next to the SW corner of the camp marked in yellow turned out to be a bronze age barrow, into which the Roman army had sunk eight ovens (one of which is shown half sectioned bottom left). Note the late Iron Age trackway, which we suspect was used by the army before any roads were built. The site is sensitive, and its location cannot be revealed.





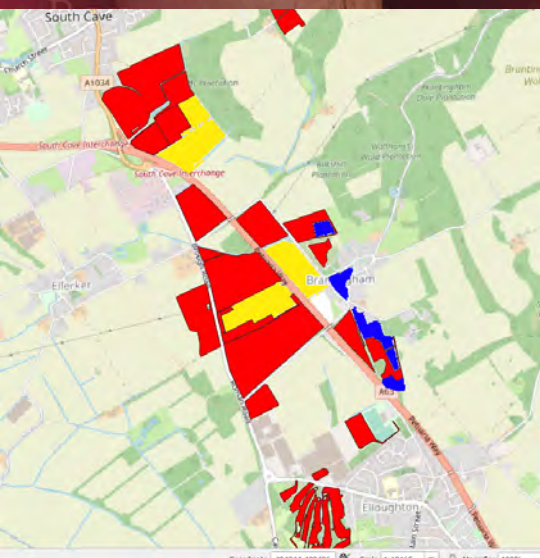
MILLE·VIAE·  
ITINERA  
VOLUME II  
2022  
ROMAN  
"A thousand roads  
lead men forever to



ROMAN·ROADS·RESEARCH  
ASSOCIATION

a charity registered in England and Wales, no. 1163854

# LECTURE PROGRAMME 2022-3

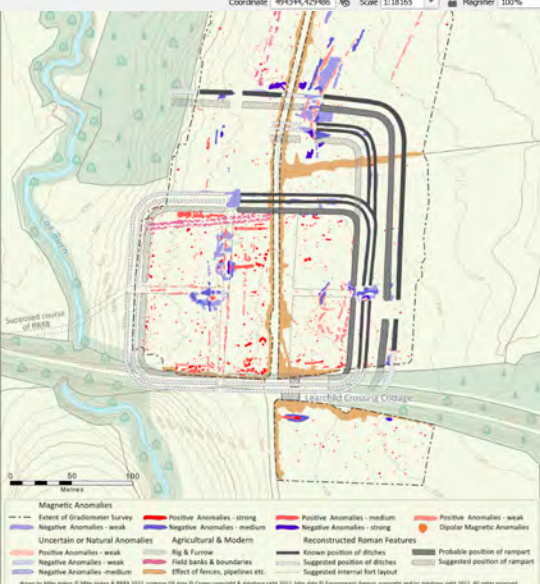


Itinera Vol. 2 was published in late spring, and work on Vol. 3 is underway.

Our Lecture Programme was established in 2021 (wouldn't fit on that page!) and our 2022-3 programme is possibly the best yet. Talks are free of charge, and open to everyone, members or not, and usually attract audiences of over a hundred.

The 'Life Beyond the Town : Petuaria' project continues. The map shows completed survey in red, with fields for which permissions have been obtained in yellow - still a long way to go, but at least we have proved that the Roman road (RR2e) is not under the modern road, as is marked on all maps.

With the help of many local volunteers, we undertook a gradiometer survey over three days at Low Leachild Roman Fort, in Northumberland, which was previously poorly understood.



2022



# PROGRESS IN 2022

## MEMBERSHIP

The rapid rate of increase in membership numbers during 2020-1 has slowed, and our aim of achieving 500 members by the end of October 2022 has not been met as a consequence. It seems that Covid 19 may be a contributory factor. Put simply, during lockdown people found themselves with time on their hands to spend online, with more people with more people learning about our work as a result. Since then, the rate of increase has slowed, with an additional factor of economic turbulence forcing more people to consider their outgoings, with society subscriptions taking a hit, a problem recognised across the sector. Membership currently stands at 451, and seems to be roughly static.

## ITINERA

Whilst the content of Vol. 2 was in our opinion excellent, sales have been disappointing, almost 25% down on the previous year, despite an increased membership. The economic situation may have played some part in this.

Offers of papers for Vol. 3 have been less than expected, with some promised papers not materialising, not the first time that has happened! That said, we have some excellent material, including a paper from the Netherlands on the site that yielded the well known inscription on one of the oak piles, and one on a major excavation by Oxford Archaeology on a site near Corby.

## QGIS GUIDE

A guide intended to help our members learn the basics of QGIS with a particular view to processing lidar imagery has been compiled by two of our members, Paul Smith and Neil Buckley. The guide is currently being edited and amended, and should be released soon.

## GEOPHYSICAL SURVEYS

Work has continued with our two main projects.

**Life Beyond the Town: Petuaria** has struggled slightly with volunteer numbers, the majority of work being done by just the same three people, plus our professional consultant archaeologist, James Lyall. This is partly due to some disappointing results in areas where we had anticipated interesting archaeology. There are still some interesting areas to complete, particularly close to the Brantingham Villa site, and over an area of apparent settlement to the south east of South Cave.

The work on the south-north corridor, now dubbed the **Roman A1** project, is also moving forwards, with the focus currently being just north of the R. Wharfe, near to the medieval road known as Rudgate. This will be reported in detail in due course.

In addition, we have undertaken two further surveys.

The first, on Carlisle Cricket Club and in Rickerby Park, Carlisle, was part of the celebrations to mark 1900 years since the emperor Hadrian's visit to the Wall, and the response from local volunteers was overwhelming. Sadly, the depth of alluvial deposit was too great to yield any results over much of the site, with the notable exception of a small area adjacent to the supposed liner of the Vallum below Stanwix Roman Fort. Here there were clear indications of settlement, with possible structures.



The second survey is part of our **Devil's Causeway Project**, which had previously stalled before getting going thanks to Covid. The fort at Low Learchild had been known for some time, however investigations were limited to two small very small excavations, and our knowledge of the site limited. Three days survey took place on the site (see p.11), which revealed some of the interior layout of the fort, a possible annexe, and what may either be an earlier larger fort or an outwork of some kind. We also surveyed part of a field where the road from High Rochester is supposed to meet the Devil's Causeway, but no trace of either road could be seen. Work was carried out by volunteers from the RRRRA, and from the Holystone History and Archaeology Group

## EXCAVATION

No excavation was undertaken in 2020. It was felt that our two previous excavations needed to be written up, at least to an interim level, before embarking on any further projects.

## ROADS OF ROMAN BRITAIN

No progress has been made on this project since early 2019. This has been partly due to difficulties in accessing HERs due to Covid 19 restrictions, but mainly due to the task of preparing the online entries being down to a single individual, our chairman, Mike Haken. The database that was intended to accompany the gazetteer was constructed, and appears to function well. It remains on a Virtual Private Server (VPS) but the online interface was not completed. Unfortunately, the volunteer in charge (who was not a member) no longer has sufficient time to devote to it.



# LOOKING FORWARDS.....

In this section we will look at the main areas of our activity in turn, and taking on board the comments in the previous section, will assess the measures necessary to ensure the Association and its projects move forward on schedule and to the desired high standard.

## GENERAL INCOME AND EXPENDITURE

As it stands, our combined membership subscriptions and Itinera receipts are insufficient to cover our usual annual outlay, which is generally in the order of £8,000 to £10,000, not including new capital items. Whilst we have previously been fortunate to be able to cover any shortfalls with funds from donations, it would be rash to assume that this will always be the case.

There are only two solutions.

1. Reducing expenditure, which would probably have to come from professional fees, meaning a reduction in the amount of fieldwork we can do at exactly the time when we need to be expanding it.
2. Increasing our revenue. This would mean ensuring that Itinera pays for itself, since this year it is running at a £500 loss (approximately), and will almost certainly have to be accompanied by an increase in the price we ask for each printed copy to £22 plus P&P, since next year's costs will be impacted by high inflation. In addition, we will have to consider reducing our print run. We may also have to consider raising membership fees, which have been static since our inception. However, at a time when everyone is having to consider their spending patterns, this would almost certainly result in a loss of members..

It will be proposed at our AGM that we increase membership modestly at this time, to £16 for an individual, and £24 for a couple, with a possible similar increase to be considered in a year's time if inflation continues at its current high rate.

## ITINERA

Whilst the journal is healthy, Vol. 3 will probably be substantially thinner than the previous two. It was always recognised that it will take time for Itinera to be established as an archaeological journal, however in order for that to happen it is important that we find ways of attracting more content from the academic and commercial sectors, something which the Editorial committee are already considering. As referred to on p.12, a proposed rise in the price of the printed volume to £22 (in line with inflation) will be put to membership.

## GEOPHYSICAL SURVEY AND EXCAVATION

These have been grouped together as the issues are essentially the same. Without question, both have been extremely successful in terms of work completed, but there are two significant issues going forwards, those of accidental geographical bias, and of reporting.

### Geographical Bias

Of the 17 completed gradiometer surveys, one was in Northamptonshire, two in Northumberland, one in Cumbria, one in Durham, and the remaining 12 in Yorkshire. The two major projects we are running are also both in Yorkshire. The reasons for this apparent bias to Yorkshire and the north is not a deliberate



choice, rather it is simply down to historical accident, the surviving founder being a Yorkshireman from Northallerton, and therefore Yorkshire is naturally where the early work began. As a result, all the members who are able to use the equipment unsupervised live in Yorkshire, including our consultant archaeologist, James Lyall, who whilst receiving professional fees for his work for us, also gives us a considerable amount of his time without charge.

Whilst operating the equipment during a survey is relatively straightforward, it takes a minimum of five days training before anyone with no previous experience is usually capable of setting up a survey unaided, and often considerably longer. Therefore, using our gradiometer array in, for example, Dorset, is not merely a matter of arranging for the equipment to be taken 300 miles and letting a set of untrained volunteers get on with it. Rather, it is essential that someone capable of training the new recruits be present. To date, that task has fallen to James Lyall, who has provided the training in all the surveys undertaken to date outside Yorkshire. Whilst James is willing to travel, he needs to earn a living and therefore be paid for his time, which means that as an Association with limited funds, we need to be sure that any proposed survey any significant distance away from Yorkshire is justifiable.

Surprisingly though, the issue of cost and justification is not currently the main problem. Despite repeatedly asking our members for suggestions as to potential projects, we have had only a handful of suggestions, and none which have so far proved viable.

## **Reporting**

When embarking on our programme of fieldwork, it had been hoped that we would be able to train a number of our members to compile the necessary reports. Unfortunately, that appears to have been a little naïve, since in four years of work only one member has acquired the necessary skills and experience, and it is unrealistic and unfair to expect one person to undertake all the writing up. This problem applies to both geophysical survey and to excavation. Clearly, it is pointless undertaking fieldwork unless the results can be disseminated.

## **Potential solutions**

Dealing with report writing first, a potential solution has been suggested whereby the RRRRA would pay for a professional archaeologist to write the basic text for each report, but with the involvement of a group of volunteers. The archaeologist, may, if appropriate (and if it was felt there were sufficiently capable volunteers), award certain tasks of illustration, additional research and compilation to individuals in small discreet chunks, as and when required. This way, volunteers would learn about each individual element of report writing without the weight of responsibility for the entire task. This method will be trialed soon, and if successful, this method may alleviate the problem going forward whilst helping to keep costs down.

With regard to potential sites/projects for fieldwork, we continue to hope that our membership may provide suggestions and at least a partial solution. Should that not come to pass, we will make a concerted effort to identify potential projects by consulting HERs and key individuals such as County archaeologists, across the entire country. This would not be done in an ad hoc fashion, rather it would be in concert with the regional progress of the gazetteer.

## **ROADS OF ROMAN BRITAIN**

This project is, of course, the embodiment of what the RRRRA was founded to do. As already mentioned on p.13, its current frozen state has been largely due to the entire responsibility for compiling the web pages falling to one person, our current chair. Our aim is to recruit a few members who would be willing to learn to use the software and assist with the steady progression of the gazetteer over the coming years - anyone with a reasonable familiarity with desk-top publishing or modern graphics packages should be able to do this.



However, moving forwards, the issue is not simply one of page building, since a page cannot be built without the text and illustrations to go on it and the issue here is again one of personnel. In order to ensure that each road is thoroughly researched and investigated, there is an exhaustive process to go through (which was defined and detailed some years ago), to ensure that all relevant information is considered. Of necessity, this is extremely time consuming and is far from just a simple case of drawing the line of a road on a map.

There are three potential solutions to this problem:

1. We recruit volunteers willing to devote the time to compile all the necessary data for each road, and then write an account
2. We divide responsibility, with some volunteers compiling all the base data, whilst other volunteers are tasked with taking that data and writing the final text and creating any necessary illustrations.
3. We take option 2. a stage further, and appoint professional archaeologists to co-ordinate the work in each region, utilising volunteers wherever possible. Of course, this route will prove extremely expensive, potentially a large six figure sum.

## A FIVE YEAR PLAN

To summarise this report, the Association is achieving a great deal, of which we should all be extremely proud. However, some of the core objectives for which the RRRRA was established are clearly not being met, for reasons which largely come down to a current lack of sufficient volunteer resources, appropriate skills, time, funding, and management. Over the coming months, the trustees will be putting together a clear plan, in effect a business plan, which will address all these highlighted issues and suggest a route forward over the next five years, where we can build on our successes, and achieve the lofty ambitions which led to the establishment of the RRRRA in the first place.



# STRUCTURE, GOVERNANCE & MANAGEMENT

## LEGAL STRUCTURE

The Roman Roads Research Association was established as a Charitable Incorporated Organisation in October 2015, and is registered as a charity with the Charity Commission, no. 1163854

## ENSURING OUR ACTIVITIES ACHIEVE OUR CHARITABLE AIMS

The Roman Roads Research Association's objectives, as set out in our constitution are to advance the education of the public in general about the Roman road network in Britain and promote the study of Roman roads and Roman heritage more generally. In particular, we do this (but not exclusively) by

- carrying out research into the course and construction of individual Roman roads.
- promoting the study of Roman roads and associated sites by community groups and organisations.
- presenting talks, lectures and displays to the general public, schools and community groups
- publishing the results of research and excavation.

Having considered the guidance on public benefit issued by the Charity Commission, in particular Section 17 of the Charities Act 2011, the trustees take the view that it is not only important that the results of our activities have public benefit, but that the activities themselves should do so. To this end, it is our policy that whilst our archaeological activities may be professionally led, the bulk of the actual work should be carried out by volunteers, with a focus on local communities, not just our own membership. To achieve our aims and maintain a policy of volunteer focus, we have created five projects/activities to develop over the coming few years.

1. **Itinera**, our annual journal, is the world's only peer reviewed periodical dedicated to Roman roads studies. This is a major achievement, with all the editorial work, design, layout, content collation, and typesetting, done in-house with a large team of over thirty volunteers. Unlike most archaeological journals, Itinera is not constrained by a publisher's paywall, and we make all content open access after just twelve months.
2. **Talks and Seminars**. We have an established season of talks, now held from autumn to spring, focused on Roman infrastructure in Britain and beyond. Our policy is one of accessibility, so all are held on Zoom, are free of charge, and are open to all.
3. **Archaeological excavations**. These are held either on Roman roads themselves, or at Roman period sites alongside a Roman road. Sites are carefully selected so that they not only answer important archaeological questions, but also with regard to attracting interest from the community, particularly from those with no previous experience of archaeology. The reports are submitted through OASIS and made publicly available online via the Archaeology Data Service.
4. **Geophysical survey**, using our own gradiometer array. The first phase was designed to examine the development of Roman infrastructure during the early years of conquest in a 80 mile long corridor from just south of Doncaster to Scotch Corner and beyond. The experience gained from this first phase is now being used to examine other sites in northern Britain, with aims to expand into southern Britain



as soon as practicable. Our aim, as always, is to encourage as much involvement as possible within local communities, both in learning from the results of the surveys, as well as getting involved in the surveys themselves, where they will receive full training. As with excavation, results will be made publicly available online.

5. **Online Gazetteer & Database**, which aims to provide an up to date and comprehensive picture of the Roman road network in Britain. This project has suffered from major technical issues, and skills shortages, but we aim to get it back on track in 2023

## ORGANISATIONAL STRUCTURE

Our **Board of Trustees** makes sure the RRRR is governed effectively and responsibly. The Trustees are responsible for us delivering our charitable objectives and for ensuring that we are governed in accordance with our Constitution. Whilst we have managed with just a single trustee for the past two years, which placed responsibility on just one person, two additional trustees have now been appointed and in accordance with our constitution are now standing for election at our AGM in November 2022. We aim to expand that number to a total of five during the next year.

The trustees delegate some functions of management to committees and working groups, drawn from our membership, in order to deliver our five main activities. Whilst a committee will be run fairly formally with regular meetings having an agenda and minutes, the membership and running of our working groups is maintained on a much more informal basis, always remembering that we are all volunteers often with busy lives outside the RRRR. Our current committees and groups are listed below:

- The **Itinera Committee** is responsible for the preparation and publication of our peer-reviewed journal, Itinera, and is assisted by an advisory panel which may from time to time include specialists from outside our membership. It generally meets monthly, or at greater intervals should that be more appropriate.
- The **Website working group**, currently with just three members, has been tasked with improving the functionality of our websites, with particular regard to allowing members to use personal logins, and addressing some technical current issues with membership payments. We are seeking additional group members to assist with updating the content of the website.
- The **Seminar and Talks working group** has five members, who ensure the smooth running of all our talks and seminars held online (currently via Zoom). Responsibility for organising the programme rests with our Talks and Seminars Coordinator, a position currently vacant.
- **Fieldwork working group**. A very informal group of four, tasked with organising the RRRR's geophysical surveys and excavations. Additional members of the group, particularly from southern Britain, are needed to help ensure a more equal geographical coverage.



# FINANCIAL REVIEW

## INCOME

	2021-2022 (£)	2020-2021 (£)
Membership Subscriptions	6196	6144
Donations & Bequests	20005	47
Itinera (journal) sales	1588	2200
<b>Total Income</b>	<b>27789</b>	<b>8391</b>

Income from subscriptions has remained broadly static over the past year, as membership numbers remained broadly level at about 450. It is possible that the growth experienced in the previous year was artificially inflated by the impact of Covid 19, with more people at home with spare time, of whom a significant number have not renewed their memberships once returning to more normal activities.

We have been extremely fortunate to receive an extremely generous gift of £20,000 which had been pledged to us in the previous year.

## EXPENDITURE

	2021-2022 (£)	2020-2021 (£)
Fieldwork Costs	6635	5779
Itinera Production	2152	2246
Outreach (Talks, exhibition, etc.)	2529	955
Other	291	316
<b>Total Expenditure</b>	<b>11606</b>	<b>9295</b>

Slight increases in fieldwork costs has been largely due to post excavation expenses relating to our excavation in September 2021. The increase in Outreach was largely down to the purchase of a high quality and heavy duty pop-up gazebo, along with accompanying exhibition material, to enable us to have a presence at outdoor heritage related events.

## UNRESTRICTED FUNDS

	2021-2022 (£)	2020-2021 (£)
<b>Cash funds this year end</b>	<b>22724</b>	<b>6541</b>

## RESERVES

In order to ensure the maintenance of our core activities, and in accordance with good practice as recommended by the Charity Commission, it has been the Trustees' stated aim to establish a reserve fund, to hold sufficient funds to maintain our scheduled activities for twelve months. This year we have finally acquired sufficient funds in order to set up the fund, arrangements for which are in progress. Given the current economic uncertainties, and the possibility of recession, the Association will need to take a cautious approach to expenditure in the coming year with regard to general expenditure. There are no planned major purchases in the coming year, and it seems likely that other expenses will remain fairly static. Whilst our aim should be to keep the costs of general activities to below the income from subscriptions and Itinera sales, that is currently unrealistic, so the Reserve fund will initially stand at £9,500, 20% higher than our anticipated income (excluding donations). The fund will be carefully and ethically invested.



## TRUSTEES

Michael S Haken     Chair

Albert Hills             Treasurer (subject to confirmation at AGM)

Robert Entwistle     (subject to confirmation at AGM)

## DECLARATION

The trustees declare that they have approved the trustees' report above.

Signed on behalf of the charity's trustees

Signature(s)

A handwritten signature in black ink, appearing to be 'MSH', followed by a long horizontal line extending to the right.

Michael Stuart Haken (Chair)

15 November 2022





CHARITY COMMISSION  
FOR ENGLAND AND WALES

Roman Roads Research Association

1163854

## Receipts and payments accounts

CC16a

For the period  
from

01-Nov-21

To


31-Oct-22

### Section A Receipts and payments

	Unrestricted funds to the nearest £	Restricted funds to the nearest £	Endowment funds to the nearest £	Total funds to the nearest £	Last year to the nearest £
<b>A1 Receipts</b>					
Subscriptions	6,196	-	-	6,196	6,144
Donations	20,005	-	-	20,005	47
Itinera (journal) Vol 1 sales	96	-	-	96	2,200
Itinera (journal) Vol 2 sales	1,492	-	-	1,492	-
	-	-	-	-	-
	-	-	-	-	-
	-	-	-	-	-
<b>Sub total (Gross income for AR)</b>	<b>27,789</b>	<b>-</b>	<b>-</b>	<b>27,789</b>	<b>8,391</b>
<b>A2 Asset and investment sales, (see table).</b>					
	-	-	-	-	-
<b>Sub total</b>	<b>-</b>	<b>-</b>	<b>-</b>	<b>-</b>	<b>-</b>
<b>Total receipts</b>	<b>27,789</b>	<b>-</b>	<b>-</b>	<b>27,789</b>	<b>8,391</b>
<b>A3 Payments</b>					
Professional archaeological services	4,859	-	-	4,859	5,566
Itinera Printing, P&P	2,152	-	-	2,152	2,246
Meeting & seminar costs	425	-	-	425	373
Excavation expenses	832	-	-	832	-
Post-Excavation costs	696	-	-	696	-
Insurance	248	-	-	248	213
Printing & Stationery	-	-	-	-	120
Internet fees	488	-	-	488	462
Software	-	-	-	-	48
Display and Exhibition costs	1,616	-	-	1,616	-
Miscellaneous	127	-	-	127	80
Paypal Fees	164	-	-	164	188
	11,606	-	-	11,606	9,295
<b>A4 Asset and investment purchases. (see table)</b>					
	-	-	-	-	244
<b>Sub total</b>	<b>-</b>	<b>-</b>	<b>-</b>	<b>-</b>	<b>244</b>
<b>Total payments</b>	<b>11,606</b>	<b>-</b>	<b>-</b>	<b>11,606</b>	<b>9,538</b>
<b>Net of receipts/(payments)</b>	<b>16,183</b>	<b>-</b>	<b>-</b>	<b>16,183</b>	<b>- 1,147</b>
<b>A5 Transfers between funds</b>	<b>-</b>	<b>-</b>	<b>-</b>	<b>-</b>	<b>-</b>
<b>A6 Cash funds last year end</b>	<b>6,541</b>	<b>-</b>	<b>-</b>	<b>6,541</b>	<b>7,688</b>
<b>Cash funds this year end</b>	<b>22,724</b>	<b>-</b>	<b>-</b>	<b>22,724</b>	<b>6,541</b>



## Section B Statement of assets and liabilities at the end of the period

Categories	Details	Unrestricted funds to nearest £	Restricted funds to nearest £	Endowment funds to nearest £
<b>B1 Cash funds</b>	Natwest Current Account	20,419	-	-
	Paypal Balance	2,305	-	-
		-	-	-
	<b>Total cash funds</b>	<b>22,724</b>	<b>-</b>	<b>-</b>
	(agree balances with receipts and payments account(s))	OK	OK	OK
		Unrestricted funds to nearest £	Restricted funds to nearest £	Endowment funds to nearest £
<b>B2 Other monetary assets</b>	Details			
		-	-	-
		-	-	-
		-	-	-
		-	-	-
		-	-	-
<b>B3 Investment assets</b>	Details	Fund to which asset belongs	Cost (optional)	Current value (optional)
			-	-
			-	-
			-	-
			-	-
			-	-
<b>B4 Assets retained for the charity's own use</b>	Details	Fund to which asset belongs	Cost (optional)	Current value (optional)
	Projector, Screen & AV	Unrestricted	850	320
	Excavation Tools & Equipment	Unrestricted	1,959	800
	Software	Unrestricted	404	160
	Sensys Gradiometer Array	Unrestricted	32,432	16,000
	Trimble R8s GPS base & Rover	Unrestricted	18,752	9,000
	Heavy Duty Gazebo and displays	Unrestricted	1,616	1,500
			-	-
			-	-
			-	-
<b>B5 Liabilities</b>	Details	Fund to which liability relates	Amount due (optional)	When due (optional)
			-	
			-	
			-	
			-	
			-	
Signed by one or two trustees on behalf of all the trustees		Signature	Print Name	Date of approval
			Michael Stuart Haken	13/11/2022



Section A

Independent Examiner's Report

Report to the trustees

Charity Name

Roman Roads Research Association

On accounts for the year  
ended

31/10/2022

Charity no  
(if any)

1163854

Set out on pages

CCXX R1 accounts and CCXX R2 accounts, attached

(remember to include the page numbers of additional sheets)

I report to the trustees on my examination of the accounts of the above charity ("the Trust") for the year ended 31/10/2022.

Responsibilities and  
basis of report

As the charity's trustees, you are responsible for the preparation of the accounts in accordance with the requirements of the Charities Act 2011 ("the Act").

I report in respect of my examination of the Trust's accounts carried out under section 145 of the 2011 Act and in carrying out my examination, I have followed all the applicable Directions given by the Charity Commission under section 145(5)(b) of the Act.

Independent  
examiner's statement

I have completed my examination. I confirm that no material matters have come to my attention in connection with the examination which gives me cause to believe that in, any material respect:

- the accounting records were not kept in accordance with section 130 of the Charities Act; or
- the accounts did not accord with the accounting records; or
- the accounts did not comply with the applicable requirements concerning the form and content of accounts set out in the Charities (Accounts and Reports) Regulations 2008 other than any requirement that the accounts give a 'true and fair' view which is not a matter considered as part of an independent examination.

I have no concerns and have come across no other matters in connection with the examination to which attention should be drawn in this report in order to enable a proper understanding of the accounts to be reached.

Signed:

Date:

29/07/24

Name:

Mr Peter Russell

Relevant professional  
qualification(s) or body  
(if any):

ACA, ATII

Address:

85 Main St, East Bridgford, Nottinghamshire, NG13 8NH

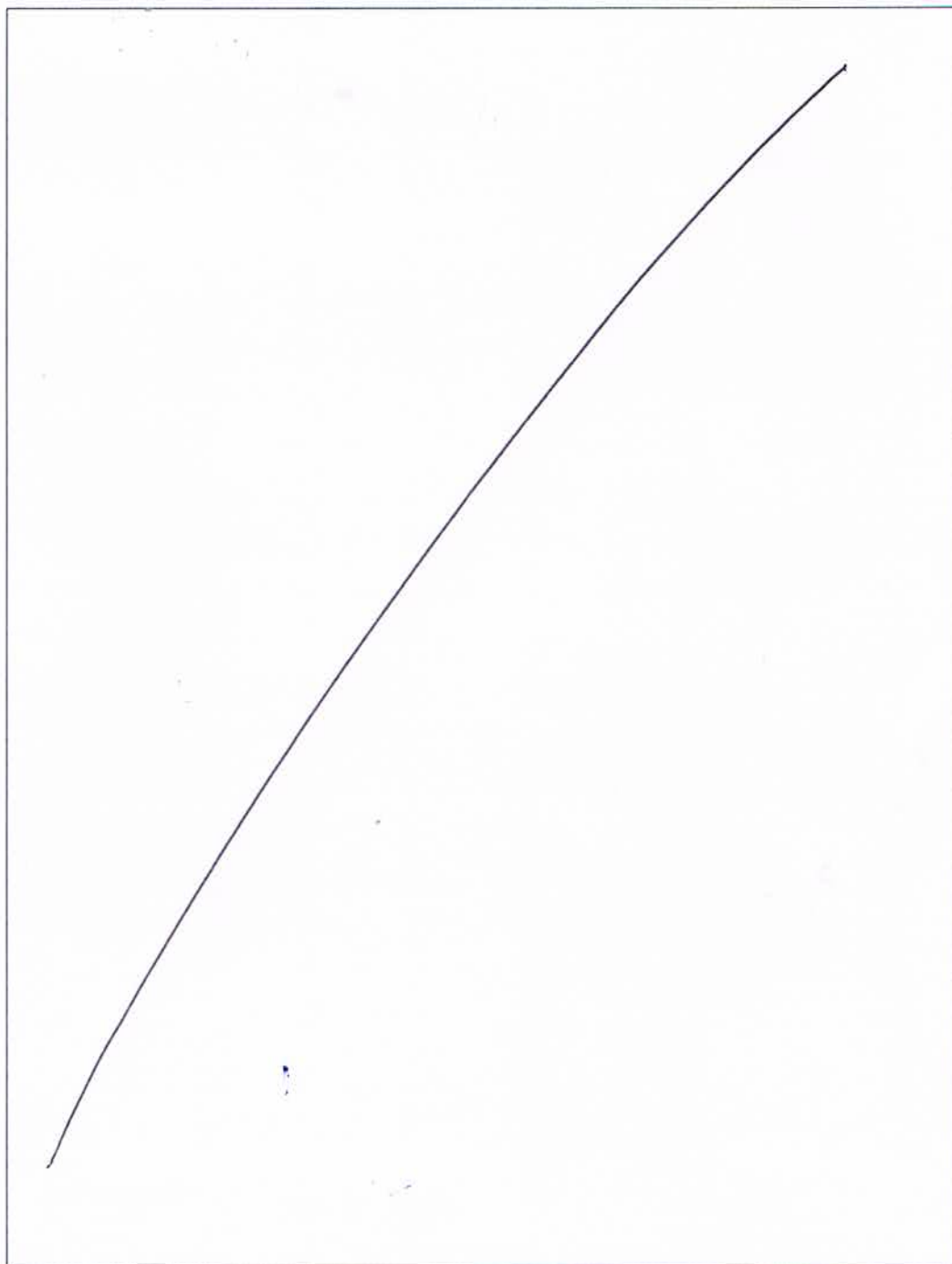


## Section B

### Disclosure

Only complete if the examiner needs to highlight material matters of concern (see CC32, Independent examination of charity accounts: directions and guidance for examiners).

Give here brief details of any items that the examiner wishes to disclose.





CHARITY COMMISSION  
FOR ENGLAND AND WALES

Roman Roads Research Association

1163854

## Receipts and payments accounts

CC16a

For the period  
from

01-Nov-21

To

31-Oct-22

### Section A Receipts and payments

	Unrestricted funds to the nearest £	Restricted funds to the nearest £	Endowment funds to the nearest £	Total funds to the nearest £	Last year to the nearest £
<b>A1 Receipts</b>					
Subscriptions	6,196	-	-	6,196	6,144
Donations	20,005	-	-	20,005	47
Itinera (journal) Vol 1 sales	96	-	-	96	2,200
Itinera (journal) Vol 2 sales	1,492	-	-	1,492	-
	-	-	-	-	-
	-	-	-	-	-
	-	-	-	-	-
<b>Sub total (Gross income for AR)</b>	<b>27,789</b>	<b>-</b>	<b>-</b>	<b>27,789</b>	<b>8,391</b>
<b>A2 Asset and investment sales, (see table).</b>					
	-	-	-	-	-
<b>Sub total</b>	<b>-</b>	<b>-</b>	<b>-</b>	<b>-</b>	<b>-</b>
<b>Total receipts</b>	<b>27,789</b>	<b>-</b>	<b>-</b>	<b>27,789</b>	<b>8,391</b>
<b>A3 Payments</b>					
Professional archaeological services	4,859	-	-	4,859	5,566
Itinera Printing, P&P	2,152	-	-	2,152	2,246
Meeting & seminar costs	425	-	-	425	373
Excavation expenses	832	-	-	832	-
Post-Excavation costs	696	-	-	696	-
Insurance	248	-	-	248	213
Printing & Stationery	-	-	-	-	120
Internet fees	488	-	-	488	462
Software	-	-	-	-	48
Display and Exhibition costs	1,616	-	-	1,616	-
Miscellaneous	127	-	-	127	80
Paypal Fees	164	-	-	164	188
	11,606	-	-	11,606	9,295
<b>A4 Asset and investment purchases. (see table)</b>					
	-	-	-	-	244
<b>Sub total</b>	<b>-</b>	<b>-</b>	<b>-</b>	<b>-</b>	<b>244</b>
<b>Total payments</b>	<b>11,606</b>	<b>-</b>	<b>-</b>	<b>11,606</b>	<b>9,538</b>
<b>Net of receipts/(payments)</b>	<b>16,183</b>	<b>-</b>	<b>-</b>	<b>16,183</b>	<b>- 1,147</b>
<b>A5 Transfers between funds</b>	<b>-</b>	<b>-</b>	<b>-</b>	<b>-</b>	<b>-</b>
<b>A6 Cash funds last year end</b>	<b>6,541</b>	<b>-</b>	<b>-</b>	<b>6,541</b>	<b>7,688</b>
<b>Cash funds this year end</b>	<b>22,724</b>	<b>-</b>	<b>-</b>	<b>22,724</b>	<b>6,541</b>



## Section B Statement of assets and liabilities at the end of the period

Categories	Details	Unrestricted funds to nearest £	Restricted funds to nearest £	Endowment funds to nearest £
<b>B1 Cash funds</b>	Natwest Current Account	20,419	-	-
	Paypal Balance	2,305	-	-
		-	-	-
	<b>Total cash funds</b>	<b>22,724</b>	<b>-</b>	<b>-</b>
	(agree balances with receipts and payments account(s))	OK	OK	OK

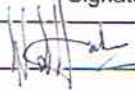
	Details	Unrestricted funds to nearest £	Restricted funds to nearest £	Endowment funds to nearest £
<b>B2 Other monetary assets</b>		-	-	-
		-	-	-
		-	-	-
		-	-	-
		-	-	-
		-	-	-

	Details	Fund to which asset belongs	Cost (optional)	Current value (optional)
<b>B3 Investment assets</b>			-	-
			-	-
			-	-
			-	-
			-	-

	Details	Fund to which asset belongs	Cost (optional)	Current value (optional)
<b>B4 Assets retained for the charity's own use</b>	Projector, Screen & AV	Unrestricted	850	320
	Excavation Tools & Equipment	Unrestricted	1,959	800
	Software	Unrestricted	404	160
	Sensys Gradiometer Array	Unrestricted	32,432	16,000
	Trimble R8s GPS base & Rover	Unrestricted	18,752	9,000
	Heavy Duty Gazebo and displays	Unrestricted	1,616	1,500
			-	-

	Details	Fund to which liability relates	Amount due (optional)	When due (optional)
<b>B5 Liabilities</b>			-	
			-	
			-	
			-	
			-	

Signed by one or two trustees on behalf of all the trustees

Signature	Print Name	Date of approval
	Michael Stuart Haken	13/11/2022