

ROMAN ROADS RESEARCH ASSOCIATION

England & Wales · Charity number 1163854

Details

Other names RRRA

Status Registered

Legal form CIO

Registered 2015-10-06

Register [View on the Charity Commission register](#)

Contact

Address Ellerbeck Cottage
Ellerbeck
Northallerton
DL6 2RY

Phone 01609883167

Email INFO@ROMANROADS.ORG

Website www.romanroads.org

Activities

Objects: TO ADVANCE PUBLIC EDUCATION ABOUT THE ROMAN ROAD NETWORK AND PROMOTE THE STUDY OF ROMAN ROADS AND ROMAN HERITAGE MORE GENERALLY, IN PARTICULAR BUT NOT EXCLUSIVELY BY(A) CARRYING OUT RESEARCH INTO THE COURSE AND CONSTRUCTION OF INDIVIDUAL ROMAN ROADS.(B) PROMOTING THE STUDY OF ROMAN ROADS AND ASSOCIATED SITES BY COMMUNITY GROUPS AND ORGANISATIONS.(C) PRESENTING TALKS, LECTURES AND DISPLAYS TO SCHOOLS AND COMMUNITY GROUPS(D) PUBLISHING THE RESULTS OF RESEARCH AND EXCAVATION.

Activities: Development of an online database and archive detailing evidence of all known Roman roads in Britain, to be made publicly available.Establishing local and regional studies of individual Roman roads and routes in England and Wales.Promoting the study of Roman roads in Britain, and encouraging public engagement with organisations and societies involved in research and excavation.

Classification

- **How:** Provides Services, Provides Advocacy/advice/information, Sponsors Or Undertakes Research
- **What:** Education/training, Environment/conservation/heritage
- **Who:** Other Charities Or Voluntary Bodies, The General Public/mankind

Geography

- Scotland
- Throughout England And Wales

Finances

Period end	Income	Expenditure	Assets	Employees
2024-10-31	£14,105	£10,030	-	-
2023-10-31	£10,887	£6,985	-	-
2022-10-31	£27,789	£11,606	-	-
2021-10-31	£8,391	£9,539	-	-
2020-10-31	£12,341	£11,662	-	-

Trustees

Name	Role	Appointed
MIKE HAKEN	Chair	2022-11-17
Albert Edward Hills		2022-11-17
Robert Ian Entwistle		2022-11-17

ROMAN ROADS RESEARCH ASSOCIATION

England & Wales - Charity number 1163854

Accounts



ROMAN·ROADS·RESEARCH·ASSOCIATION

R·R·R·A

a charity registered in England and Wales, no. 1163854

info@romanroads.org

ANNUAL REPORT

2023-2024

THE ANNUAL REPORT OF THE TRUSTEES OF THE ROMAN ROADS RESEARCH ASSOCIATION 2023-2024

Registered charity no. 1163854

Principal address:

Ellerbeck Cottage, Ellerbeck, Northallerton, North Yorkshire, DL6 2RY

<https://romanroads.org> contact: info@romanroads.org

Cover Image: Gradiometer survey one the edge of the Roman settlement of Ad Pontem (East Stoke), Nottinghamshire, , superimposed on a Google Earth aerial photo from 2007. The survey, undertaken by RRRRA members and local volunteers in 2023, shows RR59(x) from Ancaster heading northwest to meet the Fosse Way, which is fossilised by the modern road. This work finally proved the existence of this road, and shows that the settlement at Ad Pontem extended much further south than previously thought.

CONTENTS

From our Chairman, Mike Haken	<u>1</u>
Progress in 2023-24	<u>2</u>
Membership	<u>2</u>
<i>Itinera</i>	<u>2</u>
Talks & Seminars	<u>3</u>
Geophysical surveys	<u>3</u>
Excavation	<u>4</u>
Roads of Roman Britain	<u>4</u>
Moving Forwards	<u>5</u>
Our Aspirations for 2028	<u>5</u>
Strategic Objectives	<u>5</u>
Making a Start	<u>6</u>
Structure, Governance & Management	<u>7</u>
Legal Structure	<u>7</u>
Ensuring our activities achieve our charitable aims	<u>7</u>
Organisational structure	<u>7</u>
Financial review	<u>9</u>
Trustees & Declaration	<u>11</u>

OUR VISION & OUR MISSION



FROM OUR CHAIRMAN, MIKE HAKEN

It hardly seems possible that it is now ten years since I organised the excavation that eventually led to the formation of this Association. The excavation, on an engineered cutting on RR720b (Ilkley to Aldborough) on the Ripley Castle Estate, near Harrogate, demonstrated that my friend and RRRR co-founder, the late Hugh Toller (1949-2016), was correct in his observation from lidar imagery that the Roman line kept dead straight through the village of Hampsthwaite, rather than the improbable dogleg shown on most maps. That excavation, with its dozen or so volunteers, quickly led to a public meeting in Wetherby where a more formal group was formed, bound by a common interest in the Roman road network in Yorkshire. Less than a year later, that Yorkshire focus had already evolved into a wider desire to cover the entire country, the group being formally constituted as the Roman Roads Research Association, a registered charity. Since those early beginnings, the time really has flown by, and much has changed, not least the numbers - that original excavation of a dozen volunteers is now an Association with 593 members spread across the world as far afield as Japan.

On this page in last year's Trustees Report, I included a paragraph which sums up our Objectives as stated in our constitution. When looking forwards to what we are trying to achieve in the coming years, it is important to maintain focus on our primary aim, which in my view is perfectly summed up by that paragraph, so I'm going to use it again, as I probably will next year. I'm still avoiding using the phrase 'Mission Statement'!

We promote the study and understanding of Roman roads, infrastructure & heritage in Britain from over 350 years within the Roman Empire. We aim to provide an accessible focal point for our members, our volunteers, local communities, the general public, and heritage organisations both large and small, working together to gain a fuller understanding of the infrastructure and administration of Roman Britain along with the impact it had (and continues to have) on the development of our nation.

So, how much progress along that path have we made in the last year, particularly in working towards our Strategic Objectives detailed in last years report? Brief progress markers are given on pages 5 & 6, however here's a few details of what's been going on, largely behind the scenes. Our first regional group is being formed in Eastern England, based in Colchester and led by Geoff Lunn. We've also engaged a professional web designer to completely re-design our website with a more modern feel, which will include individual member logins to a new members area. Thanks to a mutually beneficial arrangement with one of our members, we now have the use of a second magnetometer cart, which will make it so much easier to carry out surveys in the south. From a personal perspective, most of my time is being spent working on creating a digital map of Roman Britain which will provide the essential starting point for the ReDrawing the Map project, due to be formally launched next year. More on page 4. When the project gets going in earnest, the map will gradually evolve as each region is thoroughly re-assessed. As promised last year, we're not starting in Yorkshire!

A handwritten signature in black ink, appearing to read 'Mike Haken', with a long horizontal line extending to the right.

Mike Haken

PROGRESS IN 2023-4

MEMBERSHIP (from Membership Secretary, Peter Webb)

Following our last AGM on the 30th November 2023, from the 1st December 2023 our membership has increased to a record level, standing at 593 as of 18th November 2024. We have welcomed 117 new members, whilst losing 21 through non-payment and 14 who have left us for a range of reasons. This means that membership recruitment is running at over three times loss.

The figures are therefore looking healthy, not just across England which unsurprisingly predominates, but it is also growing in the rest of the U.K. and abroad, where we now have 30 members around the globe.

Country:	Member number	Country	Member number
England	518	France	1
Wales	15	Germany	1
Scotland	28	Italy	1
N. Ireland	1	Japan	1
Isle of Man	1	Netherlands	4
Australia	3	New Zealand	1
Belgium	1	Portugal	1
Canada	4	USA	12
		Total	593

If as last year we divide England's counties into four geographical groups based upon position, it is interesting this year that the Association has become more broadly spread across the country with a surge in interest in Central and Southern counties:

English Areas	2024	2023	Description of counties selected
North	153	152	above line Mersey to Humber
Central	96	77	above line Avon to Wash
South East	209	172	Lines: Oxfordshire to Wash/ Oxfordshire to Solent
South West	60	59	West and south of line Gloucestershire to Solent
Total:	518	460	

So overall membership is in a healthy position and breaking the 600 barrier cannot be far away.

I would like to thank all members for their unfailing politeness and good humour in dealing with me and I look forward very much to a further year with you all.

Peter

ITINERA

Itinera IV was another excellent volume and at 410 pages our biggest to date, of which a whopping 94 pages were devoted to Roman Roads in 2023. The additional section focusing on the Devil's Causeway also increased the size, but unfortunately this also increased printing costs forcing us to increase the price, which appears to have had a major negative impact on sales. Whilst it is clear that the general trend in journal publication is towards digital output, it is also clear that many readers prefer to have a physical

copy on their bookshelf, and the *Itinera* committee is unanimous in its belief that we should continue to produce a printed version.

At the time of writing, *Itinera V* is in preparation and is expected to be a little smaller. Printing costs have not risen, which will enable us to drop the price of the printed edition and hopefully increase sales. We continue to attract contributions from abroad, with two papers this year from Romania.

Mike Bishop has decided to step down from the *Itinera* Committee, and we would all like to take this opportunity to thank him for his efforts over the last four years - without his experience and expertise *Itinera* would probably never have got off the ground. At the same time, we are extremely pleased to welcome Prof. James Gerrard (Newcastle University) to the fold. His insight from the world of academic archaeology will be invaluable in ensuring *Itinera's* future success.

Finally, we must not forget that the journal could not happen without the combined efforts of the 36 RRA members who willing to devote so much of their to making the publication a success.

TALKS & SEMINARS

The 2023-2024 season of online talks was a resounding success, with most talks achieving audiences of around 200 or more. Our Secretary, Dave Armstrong, volunteered to take over the role of organising the Talks Programme in 2023, supposedly on a very temporary basis whilst we found someone else to take it on. Dave has done an amazing job and has put together another excellent programme for the 2024-2025 season, however he would like this season to be his last, so we are now looking to recruit a new Talks Co-ordinator - anyone interested in taking this important and interesting role should contact Dave - dave.armstrong@romanroads.org.

Whilst the talks are hugely successful, we do want to increase our viewing figures on YouTube, which are good, but small by YouTube standards. This is something we will be looking to actively address in the coming months.

Finally, we would like to thank everyone who has made a donation to support our talks programme over the last year or so. Your support is very much appreciated and will now enable us to soon move over to using Zoom Webinar, with its increased functionality and control.

GEOPHYSICAL SURVEYS

This year has been unusually quiet, whilst we research more potential sites.

The Roman A1 Project. The work on the early south-north road corridor in Yorkshire is now progressing southwards into Nottinghamshire. In spring 2024, RRA members along with local volunteers, conducted a gradiometer survey immediately south of the Roman settlement at Ad Pontem, which sits on the Fosse Way just across the R. Trent from Southwell, Nottinghamshire. The results, used as the cover image for this report, have proven the existence of RR59(x), another link in the chain of roads which, if we are right, would have formed a direct and essential line of communication from the provincial capital into the territory of the Brigantes at a relatively early stage in the Roman conquest of Britain.



Volunteers on site near East Stoke, Nottinghamshire

Permission has been granted for a survey near Staunton in the Vale, Nottinghamshire, which will attempt to locate the junction between RR59(x) and

the road which is suspected to run to Thistleton, Rutland, before joining Ermine Street north of a few miles north of Great Casterton.

EXCAVATION

No excavation was undertaken in 2023-4. As noted in last year's report, our two previous excavations need to be written up, and work has commenced on this, with all external finds analysis now completed, and digitisation of the drawings underway.

However, we are keen to develop a programme of future targets for excavation. One idea is that these could be specifically chosen to assess potential differences in construction techniques between early military roads, and those built later between important settlements, presumably by commercial contractors. This is potentially a project that we could attempt to raise substantial funding to support.

ROADS OF ROMAN BRITAIN

As suggested in the previous Trustees Report, we will soon be launching ReDrawing the Map, as part of the wider Roads of Roman Britain project. The aim of ReDrawing the Map is simple; to re-examine the evidence for every known and claimed Roman road in Britain using HER records, the old Ordnance Survey Archaeology Division files, each countries national Historic Environment records, excavation reports, geophysical survey, lidar, aerial photography, field investigation, and of course reports in *Itinera* and our Newsletters. In the process, it is inevitable that a few 'new' roads will also be discovered.

This a huge task, and will take years to collate and assess all the evidence. So, as outlined in 'Making a Start' on p.6 of last year's report, our chairman, Mike Haken, has been working on preparing a temporary stop-gap. Currently about 40% complete, Mike is building a digital map which represents as good a representation as possible of our current understanding of Roman Britain, combining his own research with the massive contribution made by David Ratledge, along with many others. It is not intended to be definitive, but will provide a solid base which can then be further developed as the ReDrawing the Map project progresses. Most important of all, the mapping, when finished some time next year, will be made freely available either as a Geopackage for QGIS users, or as a KMZ to import into Google Earth.

MOVING FORWARDS....

In last year's Trustees' report, our secretary, Dave Armstrong, presented the following aspirations and strategic objectives. Where work has already started or is planned, an indication of progress is given below.

OUR ASPIRATIONS FOR 2028

- RRRA will be seen as a well-managed and respected Association of enthusiastic individuals/groups researching Roman roads in a variety of ways. - **Ongoing**
- RRRA will be visible to others through its reputation, on-line and social media presence, annual journal *Itinera* and the activities/functions it promotes. - **Ongoing**
- While predominantly made up of non-archaeological professionals the Association will be respected for the high, professional, standards it consistently applies to all of its work. - **Ongoing**
- RRRA will have created and made available as an open access (OA) resource, a comprehensive, easy to use and accurate set of detailed mapping of the Roman roads of Britannia, which will become the accepted 'go to' source for any mapping of Roman Britain. - **In progress - completion 2025**
- RRRA will have created free open-access resources detailing the construction methods & techniques including details of alignments, LDAs and surveying of Roman roads along with excavation and geophysics advice. - **Preparation to start Spring 2025**
- RRRA will actively encourage members and aligned community groups to research known and new Roman roads to a high standard providing expertise in the form of assistance, resources and training.- **Ongoing, to be expanded in 2025-26**
- RRRA will make steps to contribute to Empire wide Roman road activities by providing expertise through individuals to projects, resources and technical papers. - **Not yet commenced**

STRATEGIC OBJECTIVES

In order to achieve these aspirations, a set of specific Strategic objectives have been identified.

1. **Placing the Association on a firm organisational footing in terms of business and risk management.** This to include succession planning for Chair and Trustees, timely replacement of members in other key roles, centralised cloud storage and backup for information systems, and an annual programme of meetings, including the AGM. - **100TB Cloud storage in place through Google Workspace for Non-Profits; meeting planning active**
2. **Grow the Membership.** Both for the purposes of enlarging the pool of potential contributors, and for increasing subscription revenue to enable other activities. **Ongoing - 13% increase during 2023-24**
3. **Involving members in activities.** This for the purpose of extending the Association's core objectives, developing the level of satisfaction in membership, and providing a pool of potential role holders and officers. This strategic objective is linked to an associated objective:
4. **RRRA Education Initiative,** aimed at increasing the knowledge of, and interest in, the study of Roman roads. This will include continuing to produce publications such as *Itinera*, along with the development of a suite of training and educational guides, programmes of seminars and talks (both on-line and in person), and an outreach programme involving schools and local communities. - **Ongoing, more outreach needed**

5. **Improved management of the Association website** as an effective, and up-to-date digital showplace, and access point, for the Association. It should include removal of out-of-date information, verifying of links, and ensuring relevance to current activities. This to be achieved through appointment of a paid web manager, lifting a major administrative and technical burden off the current Chairman. - **In progress - completion 2025**
6. **A planned approach to completing the gazetteer ‘The Roads of Roman Britain’**. This is key to the organisation’s purpose of becoming the acknowledged reference point for information on the roads of Roman Britain, developing Margary’s work in the context of present knowledge, making it fit for purpose in the mid-21st century. Actions to be detailed about how this should be achieved, e.g. by creation of digitised road maps (GIS and Google Earth (.kmz files)), and milestones for step-by-step completion of the whole gazetteer. - **Planning in progress**

MAKING A START

In order to begin taking the steps necessary to achieve our Aspirations and Strategic Objectives, several proposals were put to the membership at last year’s AGM. Progress is marked where appropriate

1. The Association will employ a professional web designer to restructure the website and resolve the deficiencies. - **In progress - completion 2025**
2. The Association will take steps towards creating regional groups across Britain. - **Initiated**
3. The Association will form working groups to define (but not necessarily create) what suite of ‘how to’ Guide documents are needed to ensure RR research work is conducted to the necessary high standard - **expected commencement 2025**
4. Preliminary steps be taken to explore how funding could be sought. - **In progress**
5. As an intermediate step in progressing the development of the Roads of Roman Britain project (i.e. the gazetteer), the Association will start to produce digital mapping of each Roman road in Britain, easily downloadable from an online catalogue. - **In progress - completion 2025**

STRUCTURE, GOVERNANCE & MANAGEMENT

LEGAL STRUCTURE

The Roman Roads Research Association was established as a Charitable Incorporated Organisation in October 2015, and is registered as a charity with the Charity Commission, no. 1163854

ENSURING OUR ACTIVITIES ACHIEVE OUR CHARITABLE AIMS

The Roman Roads Research Association's objectives, as set out in our constitution are to advance the education of the public in general about the Roman road network in Britain and promote the study of Roman roads and Roman heritage more generally. In particular, we do this (but not exclusively) by

- carrying out research into the course and construction of individual Roman roads.
- promoting the study of Roman roads and associated sites by community groups and organisations.
- presenting talks, lectures and displays to the general public, schools and community groups
- publishing the results of research and excavation.

The aspirations and Strategic Objectives set out in the previous section of this report will enable us to achieve those primary objectives in our constitution, over the next five years.

As a matter of policy (having considered the guidance on public benefit issued by the Charity Commission, in particular Section 17 of the Charities Act 2011), the Trustees take the view that it is not only important that the results of our activities have public benefit, but that the activities themselves should do so. To this end, it is our policy that whilst our archaeological activities may be professionally led, the bulk of the actual work should be carried out by volunteers, with a focus on local communities, not just our own membership.

ORGANISATIONAL STRUCTURE

Our **Board of Trustees** makes sure the RRRRA is governed effectively and responsibly. The Trustees are responsible for us delivering our charitable objectives and for ensuring that we are governed in accordance with our Constitution. Whilst we currently have three Trustees, we will be seeking to recruit two more during the next year.

The trustees delegate some functions of management to committees and working groups, drawn from our membership, in order to deliver our five main activities. Whilst a committee will be run fairly formally with regular meetings having an agenda and minutes, the membership and running of our working groups is maintained on a much more informal basis, always remembering that we are all volunteers often with busy lives outside the RRRRA. Our current committees and groups are listed below, although these are very likely to change and develop during the next twelve months.

- The **Itinera Editorial Committee** currently with five members, is responsible for the preparation and publication of our peer-reviewed journal, *Itinera*, and is assisted by an advisory panel which may from time to time include specialists from outside our membership. It generally meets monthly, or at greater intervals should that be more appropriate.

- The **Strategic Planning Committee**, which currently consists of the trustees along with our Secretary, Dave Armstrong. The Trustees may choose to expand that committee as and when they see fit
- The **Seminar and Talks working group** has six members, who ensure the smooth running of all our talks and seminars held online (currently via Zoom). Responsibility for organising the programme rests with our Talks and Seminars Coordinator, a position currently vacant, although Dave Armstrong is temporarily standing in.
- **Fieldwork working group.** A very informal group of four, tasked with organising the RRRRA's geophysical surveys and excavations. Additional members of the group, particularly from southern Britain, are still needed to help ensure a more equal geographical coverage.
- **East of England regional group.** This brand new regional group is soon to hold its first meeting, and it is hoped will form the model for other regional groups across the country.

FINANCIAL REVIEW

From our Treasurer, Albert Hills

INCOME

	2023-2024(£)	2022-2023 (£)
Membership Subscriptions	9453	6848
Donations & Bequests	662	812
Zoom Events Donations	1560	
<i>Itinera</i> (journal) sales	2430	3226
Total Income	14105	10886

EXPENDITURE

	2023-2024 (£)	2022-2023 (£)
Professional Fees	2080	1807
Equipment repair & Renewal	400	1533
<i>Itinera</i> Production & postage	2902	2002
Printing	406	265
Website Redesign	2699	-
Internet Service Fees	423	489
Insurance	215	-
Paypal Fees	256	198
Bank charges & other fees	173	132
Total Expenditure	10030	6986

SURPLUS

	2023-2024 (£)	2022-2023 (£)
Surplus for the year	4075	3900

FUNDS

	2023-2024 (£)	2022-2023 (£)
Unrestricted funds this year end	15699	26624
Reserve funds this year end	15000	-
Total funds this year end	30699	26624

GENERAL INCOME AND EXPENDITURE

We are pleased to be able to report that the Association created a surplus of £4075 in the last year, mainly as a result of increased membership numbers to almost 600. We have had no major donations, although small donations from the voluntary additional £5 on the membership fee together with donations from attendees of our online talks (which doubled from the previous year) have raised £2,222. As mentioned earlier in this report, sales of *Itinera* IV are markedly down on the previous volume.

As anticipated, expenditure in 2023-24 was significantly higher than in the previous year. The major differences in expenditure this year are large increases in printing and postage costs for *Itinera* and the anticipated initial payment for the redevelopment of our website.

Looking forward to 2024-25, the current trend suggests that we can expect membership numbers to continue to rise, although of course we must not be complacent. As discussed earlier in this report, it is intended to lower the price for *Itinera* with the aim of increasing sales and reducing the loss incurred this year.

Expenditure is expected to be higher in the coming year. The strategic planning committee has approved expenditure of £4,200 for a GPS system which will allow us access to a second gradiometer array which has been acquired by one of our members specifically for our use. This new array can more easily be deployed in the southern half of the country. We will also be spending at least a further £2,700 on website development.

RESERVES

In order to ensure the maintenance of our core activities, and in accordance with good practice as recommended by the Charity Commission, it has been the Trustees' stated aim to establish a reserve fund as soon as circumstances permitted. This is intended to hold sufficient funds to maintain our scheduled activities for at least twelve months. It was agreed by the trustees that the original plan for a reserve of £10,000 was insufficient, and a Reserve Fund of £15,000 was created using a Virgin Saver account, currently earning 4.5% p.a..

TRUSTEES


Michael S Haken Chair (Re-elected at 2023 AGM)
Albert Hills Treasurer (Elected 17 November 2022)
Robert Entwistle (Subject to re-election at 2024 AGM)

DECLARATION

The trustees declare that they have approved the trustees' report above.

Signed on behalf of the charity's trustees

Signature

A handwritten signature in black ink, appearing to read 'Michael Stuart Haken', is written over a light grey dotted grid background.

Michael Stuart Haken (Chair)

19 November 2024

Roman Road Research Association Income and Expenditure

Nov 23 - Oct 24

	Income	Expenditure
Subscriptions	9,452.58	
Donations	662.20	
Zoom Events Donations	1,559.81	
Zoom Charges		- 475.82
Itinera Sales	2,430.78	
Itinera production cost		- 2,902.27
Professional Fees		- 2,080.20
Equipment Repairs & Renewals		- 400.00
Printing		- 406.21
Web Resdesign part payment		- 2,699.40
Internet Service fees		- 422.96
Insurance		- 214.80
Paypal Fees		- 255.74
Bank Charges & Paypal Fees		- 172.66
Totals	14,105.37	- 10,030.06
Surplus for the Year 23/24		4,075.31
Bank Balances y/e 23	26,624.34	
Bank Balances y/e 24	30,699.65	
Virgin 4.5% Saver	15,000.00	
Natwest 1	10,598.82	
Natwest 2	2,404.93	
Paypal	2,695.90	
		<u>30,699.65</u>

Notes

Subscription Revenue has increased in line with Membership increase (but

Zoom Donations almost doubled

Itinera sales include both No.4 and some No.3

Web site redesign has commenced and the Exec have approved a £ 5400 sp

The Exec has also approved the spending £ 4200 for a GPS system,
this will allow the RRRRA to have access to a second Magnetometry cart syste

Transferred £ 15,000 of surplus cash into 1 yr Virgin 4.5% Saver account

nditure

Nov 22 -Oct 23

	Income	Expenditure
	6,848.09	
	811.83	- 557.65
	3,226.57	- 2,002.14
		- 1,807.25
		- 1,533.85
		- 265.47
		- 489.20
		- 198.46
		- 131.88
	<hr/>	
	10,886.49	- 6,985.90
Surplus for the Year 22/23		3,900.59
y/e 22	22,723.75	
y/e 23	26,624.34	

this year have separated Donations over and above the standard £ 16)

end

am, that can be deployed elsewhere in the country.

ROMAN ROADS RESEARCH ASSOCIATION

England & Wales - Charity number 1163854

Accounts



ROMAN·ROADS·RESEARCH·ASSOCIATION

R·R·R·A

a charity registered in England and Wales, no. 1163854

info@romanroads.org

ANNUAL REPORT

2022-2023

THE ANNUAL REPORT
OF THE TRUSTEES OF THE
ROMAN ROADS RESEARCH
ASSOCIATION
2021-2022

Registered charity no. 1163854

Principal address:

Ellerbeck Cottage, Ellerbeck, Northallerton, North Yorkshire, DL6 2RY

<https://romanroads.org>, contact: info@romanroads.org

Cover Image: Gradiometer survey east of Thorp Arch trading estate, Wetherby, West Yorkshire, superimposed on a Google Earth aerial photo from 2018. The survey, undertaken by RRRRA members in 2023, shows that RR280 almost certainly passed directly through the Flavian fort at Newton Kyme before crossing the R. Wharf by a bridge then heading north. This calls into question the traditional notion that the course of RR280 is represented at this point by the medieval road known as Rudgate and St. Helen's Ford some 450m to the west.

CONTENTS

From our Chairman, Mike Haken	<u>1</u>
Progress in 2023	<u>2</u>
Membership	<u>2</u>
Itinera	<u>2</u>
Talks & Seminars	<u>2</u>
Geophysical surveys	<u>2</u>
Excavation	<u>3</u>
Roads of Roman Britain	<u>3</u>
Moving Forwards	<u>4</u>
Our Aspirations for 2024	<u>4</u>
Strategic Objectives	<u>4</u>
Structure, Governance & Management	<u>6</u>
Legal Structure	<u>6</u>
Ensuring our activities achieve our charitable aims	<u>6</u>
Organisational structure	<u>6</u>
Financial review	<u>8</u>
Trustees & Declaration	<u>9</u>

OUR VISION & OUR MISSION



FROM OUR CHAIRMAN, MIKE HAKEN

Last years Trustees' Report provided a review of everything that had been achieved over the previous seven years, and it was quite a list, and a hefty report as a result. This year the report is slimmer, since it only looks at what has been achieved last year, and most importantly how we can move forwards in the years to come.

In 'Structure and Governance' on p.6, we have reproduced our Objectives as stated in our constitution, as the Charity Commission requires us to do. However, rather than that formal four clause layout, I think the the idea of what RRRRA aims to achieve can be better summed up in the following paragraph (I'm trying to avoid using the phrase 'Mission Statement!').

We promote the study and understanding of Roman roads, infrastructure & heritage in Britain from over 350 years within the Roman Empire. We aim to provide an accessible focal point for our members, our volunteers, local communities, the general public, and heritage organisations both large and small, working together to gain a fuller understanding of the infrastructure and administration of Roman Britain along with the impact it had and continues to have on the development of our nation.

I think its fair to say that in our first eight years we've made a good deal of progress along that path, but there's a very long way to go, and there are clearly things we could do much better. The statement above is as much about involvement and inclusivity as it is about understanding the archaeology, and unfortunately, this is one area where we could, and should do much better, since we suffer from a very clear geographical bias towards Yorkshire and northern England. As an entirely voluntary organisation, whose Treasurer lives in Nottinghamshire, Secretary in Co. Durham, Chairman in North Yorkshire, and archaeological consultant in the East Riding, it was inevitable that this would happen. However that does not make it right. We have been aware of the issue for some considerable time, without successfully addressing it, a failing for which I take full responsibility.

So, how are we going to encourage greater involvement among our membership irrespective of where they happen to live?

First, we now believe that we are large enough (506 members at the time of writing) to start establishing regional groups, something that will begin to happen in the coming months. Of course, Dave and I can't possibly run a group in, say Bristol, from up north; for this to work it will need you, our membership to get involved, with some of you taking responsibility for coordinating a regional group, with of course guidance and mentoring from the centre.

Second, we will soon be announcing the start of a major project, part of the larger Roads of Roman Britain project, to create digital mapping of all the Roman roads in Britain. There will be plenty of opportunities to get involved, utilising the regional groups we're aiming to establish and I promise it won't start in Yorkshire!

A handwritten signature in black ink, appearing to read 'Mike Haken', written over a light grey grid background.

Mike Haken

PROGRESS IN 2022-3

MEMBERSHIP

We are pleased to be able to report that our membership numbers, largely static during the previous year, have risen again. Whilst we haven't quite emulated the rapid rise in 2021, our aim of achieving 500 members was finally achieved during October 2023. Given that the entire sector has struggled with maintaining membership levels over the last twelve months due to the cost of living crisis, this rise is both surprising and gratifying, especially after our decision to raise membership fees taken at the last AGM. Clearly, that was the right decision. The last AGM also approved the addition of an optional £5 donation, which interestingly hardly any of our members have taken up.

ITINERA

Unfortunately, neither of the two major papers that were advertised for Volume III in last year's Trustees Report actually made it into publication. Despite this, it was an excellent volume, that confirmed Itinera's unique place amongst the more long-established archaeological journals of Britain and Europe. At the time of writing, Itinera IV is in preparation and ahead of schedule, with the first papers already back from review and about to be set in what will be a bumper volume. In addition to our usual format, we will also be publishing a separate section of five papers related to the Devil's Causeway in Northumberland, which were presented at a one day conference in June organised by Lindsay Allason-Jones and the Border Archaeological Society.

Itinera remains unusual in Britain thanks to our policy of making each volume Open Access after twelve months, only made possible by our ability to keep everything in-house and avoiding the paywalls created by the big publishing houses. This couldn't happen without the efforts of the 36 RRA members who are willing to devote so much of their time to making the publication a success. Unfortunately, Gary Whitaker, who has done such a good job in handling the distribution of hard copies since the inception of Itinera, has had to stand down on health grounds. Another member, Chris Webb, has already volunteered to take over.

TALKS & SEMINARS

Since its introduction, we have aimed to provide a programme of talks each year that is as varied as possible, not restricted to Roman road studies but relating to Roman archaeology more broadly. Our approach is not only successful, but audience continue to increase, with many talks attracting over 200 viewers on the night, and even more on You Tube. It is worth noting that four of the seven talks in the 2022-2023 are now in our top ten on You Tube, out of a total of 21 recordings so far.

GEOPHYSICAL SURVEYS

Life Beyond the Town: Petuaria. As reported last year, this project has struggled slightly with volunteer numbers, the majority of work being done by just the same three people, plus our professional consultant archaeologist, James Lyall. There has been only limited progress over the last year, however there remain two key areas still to survey; an area of apparent settlement to the south east of South Cave where we now have permission, and the immediate area around the so called Brantingham Villa where we currently don't. The latter site is perhaps most important, since we suspect it could be a much more complex site than simply a typical agriculturally focused villa, potentially a temple complex.

Devil's Causeway Project. After our successful survey at Low Learchild in 2022, volunteers from the RRA and from the Holystone History and Archaeology Group conducted a gradiometer survey at Todburn West in July. The site had been identified by Bryn Gethin of Warwickshire Archaeology as a possible temporary

camp, and the northern part of it certainly looks convincing on the ground. Unfortunately, the results were inconclusive potentially resulting from ground conditions and the local surface geology. Further work is needed, possibly using our resistivity equipment.

The work on the early south-north corridor through Lincolnshire, Nottinghamshire and Yorkshire, now dubbed the **Roman A1** project, has moved a little further forwards, with the completion of a survey north of the R. Wharfe, opposite the fort at Newton Kyme. This has shown that the Roman road (RR280) did not swing west around the fort and vicus along the line of the Medieval road known as Rudgate 435m to the west, and across St. Helen's Ford, but went straight through the fort and almost certainly crossed by means of a bridge (see cover image of this report). Work on this route will continue, with a potential fort site at Leeming, and an unconfirmed stretch of probable road in Nottinghamshire just east of Staunton in the Vale.



RRRA geophysics volunteers on site at Walton Lodge Farm, Thorp Arch, West Yorkshire

EXCAVATION

No excavation was undertaken in 2022-3. It was felt that our two previous excavations needed to be written up, at least to an interim level, before embarking on any further projects. However, the specialist reports for both excavations have now been completed, and work will soon commence on getting the reports prepared.

ROADS OF ROMAN BRITAIN

There has been no progress on the development of this project over the last year. Over the next year, a plan will be formulated to enable the project, in particular the gazetteer, to get back on track. This is addressed in the next section of this report.

In the previous Trustees Report, reference was made to the online database, development of which stalled in 2019 when the volunteer who was in charge could no longer commit his time to the project. Until last year, however, the prototype did 'appear to function well' despite a very clunky interface. Unfortunately, that is no longer the case, since it seems to have been hacked, and the files no longer accessible, although efforts are being made to rectify this. Whilst this project remains on hold, it will be re-visited at some point in the future.

MOVING FORWARDS....

In last year's Trustees' report, we took a close look at each of our activities and examined what may be necessary in order to progress each one. The problems and obstacles highlighted there still remain, however in order to move forwards we have begun to make realistic and achievable plans for the future. We have taken on board feedback from our membership in terms of what you would like to see achieved within the next five years and how the Association should be seen by the rest of the archaeological community and the general public. On behalf of the Trustees, our secretary, Dave Armstrong, has formulated the following aspirations and strategic objectives.

OUR ASPIRATIONS FOR 2028

- RRRA will be seen as a well-managed and respected Association of enthusiastic individuals/groups researching Roman roads in a variety of ways.
- RRRA will be visible to others through its reputation, on-line and social media presence, annual journal *Itinera* and the activities/functions it promotes.
- While predominantly made up of non-archaeological professionals the Association will be respected for the high, professional, standards it consistently applies to all of its work.
- RRRA will have created and made available as an open access (OA) resource, a comprehensive, easy to use and accurate set of detailed mapping of the Roman roads of Britannia, which will become the accepted 'go to' source for any mapping of Roman Britain.
- RRRA will have created free open-access resources detailing the construction methods & techniques including details of alignments, LDAs and surveying of Roman roads along with excavation and geophysics advice.
- RRRA will actively encourage members and aligned community groups to research known and new Roman roads to a high standard providing expertise in the form of assistance, resources and training.
- RRRA will make steps to contribute to Empire wide Roman road activities by providing expertise through individuals to projects, resources and technical papers.

STRATEGIC OBJECTIVES

In order to achieve these aspirations, a set of specific Strategic objectives have been identified.

1. **Placing the Association on a firm organisational footing in terms of business and risk management.** This to include succession planning for Chair and Trustees, timely replacement of members in other key roles, centralised cloud storage and backup for information systems, and an annual programme of meetings, including the AGM.
2. **Grow the Membership.** Both for the purposes of enlarging the pool of potential contributors, and for increasing subscription revenue to enable other activities.
3. **Involving members in activities.** This for the purpose of extending the Association's core objectives, developing the level of satisfaction in membership, and providing a pool of potential role holders and officers. This strategic objective is linked to an associated objective:

4. **RRRA Education Initiative**, aimed at increasing the knowledge of, and interest in, the study of Roman roads. This will include continuing to produce publications such as *Itinera*, along with the development of a suite of training and educational guides, programmes of seminars and talks (both on-line and in person), and an outreach programme involving schools and local communities.
5. **Improved management of the Association website** as an effective, and up-to-date digital showplace, and access point, for the Association. It should include removal of out-of-date information, verifying of links, and ensuring relevance to current activities. This to be achieved through appointment of a paid web manager, lifting a major administrative and technical burden off the current Chairman.
6. **A planned approach to completing the gazetteer ‘The Roads of Roman Britain’**. This is key to the organisation’s purpose of becoming the acknowledged reference point for information on the roads of Roman Britain, developing Margary’s work in the context of present knowledge, making it fit for purpose in the mid-21st century. Actions to be detailed about how this should be achieved, e.g. by creation of digitised road maps (GIS and Google Earth (.kmz files), and milestones for step-by-step completion of the whole gazetteer.

STRUCTURE, GOVERNANCE & MANAGEMENT

LEGAL STRUCTURE

The Roman Roads Research Association was established as a Charitable Incorporated Organisation in October 2015, and is registered as a charity with the Charity Commission, no. 1163854

ENSURING OUR ACTIVITIES ACHIEVE OUR CHARITABLE AIMS

The Roman Roads Research Association's objectives, as set out in our constitution are to advance the education of the public in general about the Roman road network in Britain and promote the study of Roman roads and Roman heritage more generally. In particular, we do this (but not exclusively) by

- carrying out research into the course and construction of individual Roman roads.
- promoting the study of Roman roads and associated sites by community groups and organisations.
- presenting talks, lectures and displays to the general public, schools and community groups
- publishing the results of research and excavation.

The aspirations and Strategic Objectives set out in the previous section of this report will enable us to achieve those primary objectives in our constitution, over the next five years.

As a matter of policy (having considered the guidance on public benefit issued by the Charity Commission, in particular Section 17 of the Charities Act 2011), the Trustees take the view that it is not only important that the results of our activities have public benefit, but that the activities themselves should do so. To this end, it is our policy that whilst our archaeological activities may be professionally led, the bulk of the actual work should be carried out by volunteers, with a focus on local communities, not just our own membership.

ORGANISATIONAL STRUCTURE

Our **Board of Trustees** makes sure the RRRRA is governed effectively and responsibly. The Trustees are responsible for us delivering our charitable objectives and for ensuring that we are governed in accordance with our Constitution. Whilst we currently have three Trustees, we will be seeking to recruit two more during the next year.

The trustees delegate some functions of management to committees and working groups, drawn from our membership, in order to deliver our five main activities. Whilst a committee will be run fairly formally with regular meetings having an agenda and minutes, the membership and running of our working groups is maintained on a much more informal basis, always remembering that we are all volunteers often with busy lives outside the RRRRA. Our current committees and groups are listed below, although these are very likely to change and develop during the next twelve months.

The **Itinera Editorial Committee** is responsible for the preparation and publication of our peer-reviewed journal, Itinera, and is assisted by an advisory panel which may from time to time include specialists from outside our membership. It generally meets monthly, or at greater intervals should that be more appropriate.

- The **Strategic Planning Committee**, which currently consists of the trustees along with our Secretary, Dave Armstrong. The Trustees may choose to expand that committee as and when they see fit
- The **Seminar and Talks working group** has five members, who ensure the smooth running of all our talks and seminars held online (currently via Zoom). Responsibility for organising the programme rests with our Talks and Seminars Coordinator, a position currently vacant, although Dave Armstrong is temporarily standing in.
- **Fieldwork working group.** A very informal group of four, tasked with organising the RRRRA's geophysical surveys and excavations. Additional members of the group, particularly from southern Britain, are needed to help ensure a more equal geographical coverage.

FINANCIAL REVIEW

INCOME

	2021-2022 (£)	2021-2022 (£)
Membership Subscriptions	6848	6196
Donations & Bequests	812	20005
Itinera (journal) sales	3226	1588
Total Income	10886	27789

Income from subscriptions has increased over the past year, due both to the rise in subscriptions and our increasing membership from 450 to around 500. We have had no major donations, the bulk of donations coming from those who choose to donate when booking for one of our online talks.

EXPENDITURE

	2022-2023 (£)	2021-2022 (£)
Fieldwork Costs	3341	6635
Itinera Production	2002	2152
Outreach (Talks, exhibition, etc.)	1313	2529
Other	330	291
Total Expenditure	6986	11606

Slight increases in fieldwork costs has been largely due to post excavation expenses relating to our excavation in September 2021. The increase in Outreach was largely down to the purchase of a high quality and heavy duty pop-up gazebo, along with accompanying exhibition material, to enable us to have a presence at outdoor heritage related events.

UNRESTRICTED FUNDS

	2022-2023 (£)	2021-2022 (£)
Cash funds this year end	26624	22724

GENERAL INCOME AND EXPENDITURE

We are pleased to be able to report that the Association created a surplus of £3900 in the last year. Whilst this was in part due to a rising membership, increased membership fees, and higher Itinera sales, we had significantly reduced fieldwork costs, being £3294 less than in 2021-22.

Since we are intending to engage a professional web designer to overhaul our website, the cost of which is currently unknown (although likely to be substantial), it can be expected that in 2023-24 expenditure will be significantly higher than in 2022-23. Given the current economic uncertainties, and the remaining (although diminishing) possibility of recession, the Association will need to continue to take a cautious approach to expenditure in the coming year. There are no planned major purchases, and it seems likely that other general expenses will remain fairly static. If we expand the amount of fieldwork we carry out, as is our aim, it seems probable that the next year will see a substantial deficit. Therefore, we will be examining the possibilities of acquiring external grant funding to cover some of our fieldwork costs.

RESERVES

In order to ensure the maintenance of our core activities, and in accordance with good practice as recommended by the Charity Commission, it has been the Trustees' stated aim to establish a reserve fund, to hold sufficient funds to maintain our scheduled activities for twelve months. However, since no suitable high interest accounts were then available, our entire funds remained in effect unrestricted, although held divided between two separate current accounts. Since higher interest is now possible, our Treasurer is currently exploring our best options for a reserve account holding approximately £10,000 which could yield up to 5% p.a. (ie £500), dependent on the length of notice given for withdrawals.

TRUSTEES

Michael S Haken Chair (subject to re-election at 2023 AGM)

Albert Hills Treasurer (Elected 17 November 2022)

Robert Entwistle (Elected 17 November 2022)

DECLARATION

The trustees declare that they have approved the trustees' report above.

Signed on behalf of the charity's trustees

Signature

A handwritten signature in black ink, appearing to read 'Michael Stuart Haken', with a long horizontal flourish extending to the right.

Michael Stuart Haken (Chair)

27 November 2023



Section A

Independent Examiner's Report

Report to the trustees

Charity Name Roman Roads Research Association

On accounts for the year ended

31/10/23	Charity no (if any)	1163854
-----------------	----------------------------	----------------

Set out on pages

CC16a Pages 1, 2, 3, and 4 - attached <small>(remember to include the page numbers of additional sheets)</small>
--

I report to the trustees on my examination of the accounts of the above charity ("the Trust") for the year ended 31/10/2023.

Responsibilities and basis of report

As the charity's trustees, you are responsible for the preparation of the accounts in accordance with the requirements of the Charities Act 2011 ("the Act").

I report in respect of my examination of the Trust's accounts carried out under section 145 of the 2011 Act and in carrying out my examination, I have followed all the applicable Directions given by the Charity Commission under section 145(5)(b) of the Act.

Independent examiner's statement

I have completed my examination. I confirm that no material matters have come to my attention in connection with the examination which gives me cause to believe that in, any material respect:

- the accounting records were not kept in accordance with section 130 of the Charities Act; or
- the accounts did not accord with the accounting records; or
- the accounts did not comply with the applicable requirements concerning the form and content of accounts set out in the Charities (Accounts and Reports) Regulations 2008 other than any requirement that the accounts give a 'true and fair' view which is not a matter considered as part of an independent examination.

I have no concerns and have come across no other matters in connection with the examination to which attention should be drawn in this report in order to enable a proper understanding of the accounts to be reached.

Signed:	Date: 02/08/24
----------------	------------------------------

Name: Mr Peter Russell

Relevant professional qualification(s) or body (if any):	ACA, ATII
---	------------------

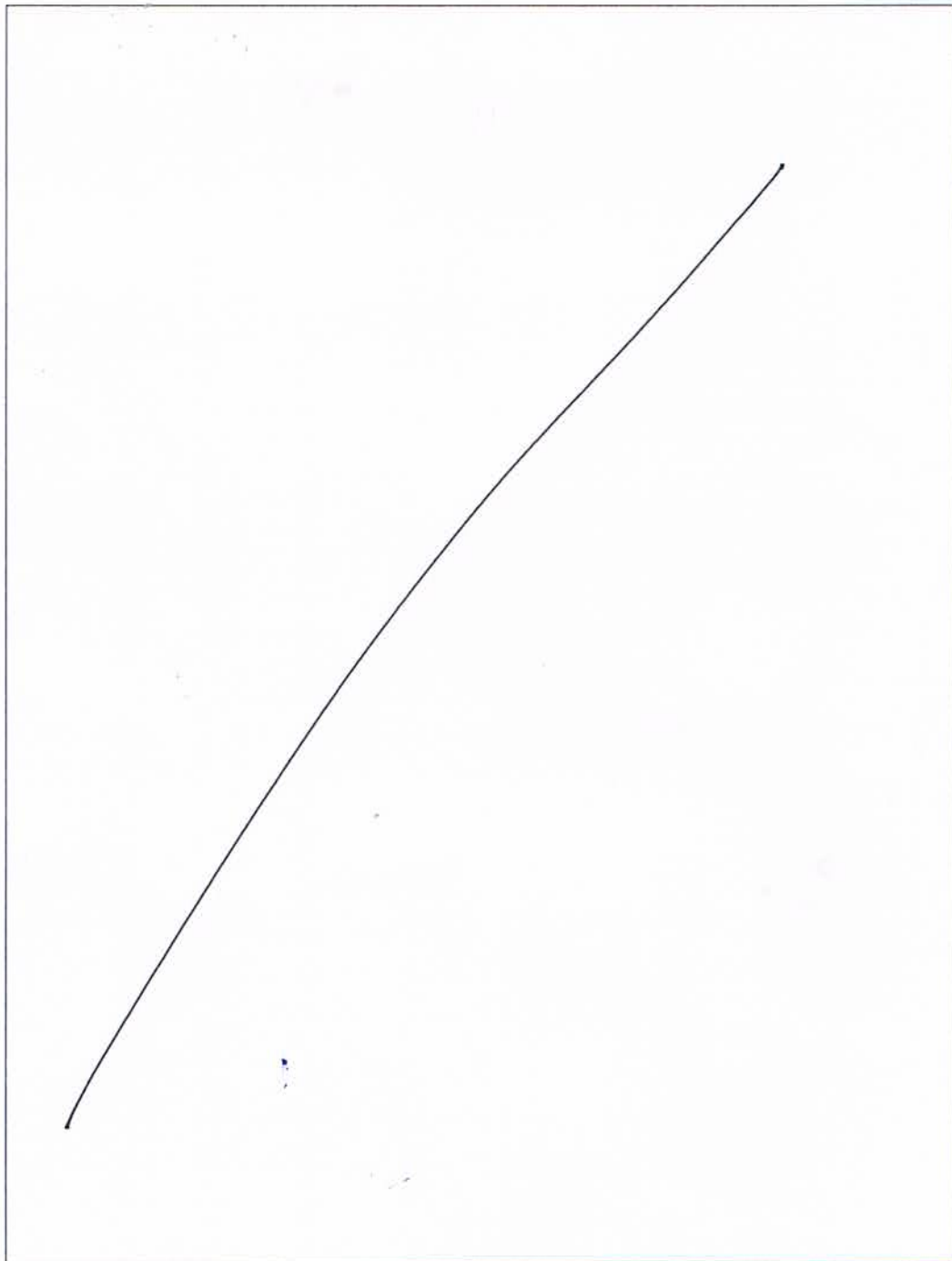
Address:	85 Main St, East Bridgford, Nottinghamshire, NG13 8NH
-----------------	--

Section B

Disclosure

Only complete if the examiner needs to highlight material matters of concern (see CC32, Independent examination of charity accounts: directions and guidance for examiners).

Give here brief details of any items that the examiner wishes to disclose.



Professional archaeological services	1,807	-	-	1,807	4,859
Itinera Printing, P&P	2,002	-	-	2,002	2,152
Meeting & seminar costs	558	-	-	558	425
Excavation expenses	-	-	-	-	832
Post-Excavation costs	-	-	-	-	696
Insurance	-	-	-	-	248
Printing & Stationery	265	-	-	265	-
Internet fees	471	-	-	471	488
Software	-	-	-	-	-
Equipment Repairs and Renewals	1,534	-	-	1,534	-
Display and Exhibition costs	-	-	-	-	1,616
Miscellaneous	18	-	-	18	127
Paypal Fees	330	-	-	330	164
	6,985	-	-	6,985	11,607

A4 Asset and investment purchases. (see table)	-	-	-	-	-
Sub total	-	-	-	-	-

Total payments	6,985	-	-	6,985	11,607
-----------------------	-------	---	---	-------	--------

Net of receipts/(payments)	3,902	-	-	3,902	16,182
A5 Transfers between funds	-	-	-	-	-
A6 Cash funds last year end	22,723	-	-	22,723	6,541
Cash funds this year end	26,625	-	-	26,625	22,723

Section B Statement of assets and liabilities at the end of the period

Categories	Details	Unrestricted funds	Restricted funds	Endowment funds
------------	---------	--------------------	------------------	-----------------

B1 Cash funds

Natwest Business Current Account	to nearest £	to nearest £	to nearest £
Paypal Balance	12,398	-	-
Natwest Current Account	4,353	-	-
Total cash funds	9,873	26,624	26,624

(agree balances with receipts and payments account(s))

Agreement Error

OK

OK

Unrestricted funds

Restricted funds

Endowment funds

Details

to nearest £

to nearest £

to nearest £

B2 Other monetary assets

Details

Fund to which asset belongs

Cost (optional)

Current value (optional)

B3 Investment assets

Details

Fund to which asset belongs

Cost (optional)

Current value (optional)

B4 Assets retained for the charity's own use

Details	Fund to which liability relates	Amount due (optional)	When due (optional)
Projector, Screen & AV	Unrestricted	850	250
Excavation Tools & Equipment	Unrestricted	1,959	600
Software	Unrestricted	404	-
Sensys Gradiometer Array	Unrestricted	32,432	13,000
Trimble R8s GPS base & Rover	Unrestricted	18,752	7,200
Heavy Duty Gazebo and displays	Unrestricted	1,616	1,200
		-	-
		-	-
		-	-

B5 Liabilities

Details	Fund to which liability relates	Amount due (optional)	When due (optional)
		-	
		-	
		-	
		-	

Signed by one or two trustees on behalf of all the trustees

Signature	Albert Edward Hills	Date of approval
<i>Albert Edward Hills</i>	<i>Albert Edward Hills</i>	03/11/2023

ROMAN ROADS RESEARCH ASSOCIATION

England & Wales - Charity number 1163854

Accounts



ROMAN·ROADS·RESEARCH·ASSOCIATION

R·R·R·A

a charity registered in England and Wales, no. 1163854

info@romanroads.org

ANNUAL REPORT

2021-2022

THE ANNUAL REPORT OF THE ROMAN ROADS RESEARCH ASSOCIATION

Registered charity no. 1163854

Principal address:

Ellerbeck Cottage, Ellerbeck, Northallerton, North Yorkshire

DL6 2RY

<https://romanroads.org>

info@romanroads.org

CONTENTS

From our Chairman, Mike Haken	1
The First Seven Years	3
2017	3
2018	4
2019	5
2020	6
2021	7
2022	8
Progress in 2022	9
Membership	9
Itinera	9
QGIS Guide	9
Geophysical surveys	9
Roads of Roman Britain	10
Looking Forwards	11
General Income and Expenditure	11
Itinera	11
Geophysical Survey and Excavation	11
Roads of Roman Britain	12
A Five Year Plan	13
Structure, Governance & Management	14
Ensuring our activities achieve our charitable aims	14
Organisational structure	15
Financial review	16
Trustees & Declaration	17

OUR VISION & OUR MISSION



FROM OUR CHAIRMAN, MIKE HAKEN

When the late Hugh Toller and myself established the Roman Roads Research Association as a charity in 2015, we had lofty ambitions. Before that, Roman roads studies in Britain had tended to attract people with much more enthusiasm than objectivity and archaeological knowledge. Perhaps worse, the objective of many researchers seemed to be merely to spot a ‘new’ Roman road and then move on to the search for the next one - what Hugh used to call ‘archaeological trainspotting.’ The result was that far too many spurious roads were claimed, often becoming entrenched in popular belief. Little wonder then that the subject was largely viewed with disdain by much of the archaeological profession.

Hugh and I wanted to change all that, and set up the Association with the goal of redrawing the map of Roman Britain with an in depth, objective and rigorous analysis of the entire network, including fieldwork on both Roman roads and adjacent Roman sites, mainly following the model set by work carried out in the early 2000s by the Archaeological Trusts in Wales. The plan was to cover the country one region at a time, enlisting teams of volunteers to assist in the work, and have the entire task completed by 2027. Sadly, Hugh became ill and passed away when the RRRRA was just a year old, but the Association survived. In the very early days, we set out to follow some basic rules.

1. That we would seek to involve as many volunteers as possible in our work - that it was much about the experience and education of the people involved as it was about the archaeology.
2. That we would ensure that none of the Association’s work was hidden behind an un-affordable paywall, making the results of our work available to all, without charge.
3. That all our work, whether data gathering and analysis, or excavation and geophysical survey, would be carried out, written up and reported to the highest possible standards.

In the six years since Hugh’s death, we have achieved a great deal, always trying to maintain those three basic rules, and we certainly have much to be proud of.

- We set the ball rolling with extremely successful conferences in Portsmouth and York in 2016
- We have grown our membership from zero to 451 in just seven years, with many international members.
- Our members receive a substantial quarterly newsletter.
- We have established the Roads of Roman Britain Project, and interactive online gazetteer and database of all Roman roads in Britain
- Our fieldwork has been assisted by over 200 individual volunteers, many with no previous experience, some of whom are now working in archaeology full time or pursuing further education in the field.
- We now own our own 5 probe gradiometer array, and since 2018 have completed seventeen discreet surveys, with two more major projects ongoing - a total of 210 Hectares completed.
- We have excavated part of Dere Street Roman road, and an adjacent settlement, and have confirmed by excavation a previously unknown Roman temporary camp near Doncaster
- We have established our own peer reviewed journal, *Itinera*, entirely designed, compiled, edited and typeset by our members, the third volume being currently in preparation.

On the face of it, that all seems well and good, and it is certainly a major achievement, but its hard from that list to determine just how far we've gone towards achieving our objectives, and how far we still have to go. This Annual Report therefore attempts to set out not just to review the last twelve months, but to examine just how far our activities during the first seven years have gone towards achieving our objectives. It will not only illustrate our victories, but also our defeats, highlighting what has worked and most importantly what hasn't. Finally, it proposes that we develop a five year plan which when followed may help us achieve those lofty ambitions that Hugh and I set out with, seven years ago.

Best regards

A handwritten signature in black ink, appearing to read 'Mike Haken', with a long horizontal flourish extending to the right.

Mike Haken

Chairman

THE FIRST SEVEN YEARS



ROMAN·ROADS·RESEARCH
ASSOCIATION

is proud to host

The Ivan D Margary Memorial Conferences 2016

Portsmouth 3rd & 4th September 2016
York 12th & 13th November 2016

To celebrate the work and legacy of Ivan Donald Margary, the 20th century's most influential Roman roads researcher & historian, we bring together internationally renowned academics and Roman roads researchers to explore how we can better understand the Roman road network in Britain and the strategic planning that underpinned it.



Ivan Margary (1896 - 1976)

OUTLINE PROGRAMME for PORTSMOUTH

Key themes of the conference:

- Ivan D Margary, the Man & his Legacy
- Recent research in Southern England
- New Technology, New Approaches
- Roman Roads Planning and Surveying
- Margary's Road Numbering System

Speakers include:

Professor Mike Fulford (University of Reading), Dr. M. C. Bishop, John Poulter, Professor Anthony King (University of Winchester), David Millum & Rob Wallace (The Culver Project), Rob Entwistle, Dr. John Peterson (University of East Anglia), David Staveley, Bryn Gethin (Warwickshire Archaeology), Mike Haken (RRRA), Graeme Erskine (University of Edinburgh)

Sunday afternoon optional visit to Fishbourne Roman Palace, Margary's legacy

£65 including lunch and refreshments on both days, Fishbourne visit £10
Book at www.romanroads.org/margarybooking or on adjacent form

Contact for queries: Mike Haken, Chairman, RRRRA Tel: 07846 491151, 01457 872281
Email: mike@romanroads.org



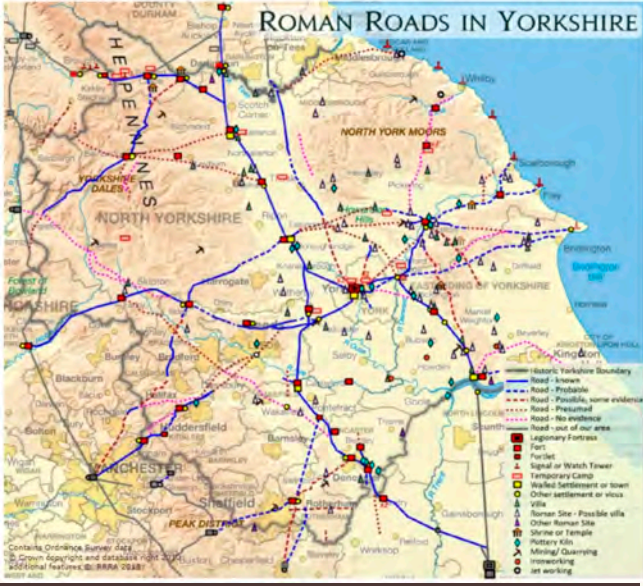
2016 saw our two hugely successful Ivan D Margary Memorial Conferences in Portsmouth and in York

We partnered in FFWAP's excavation of a ladder settlement next to the supposed course of Roman road 810

2017



THE GAZETTEER



Click on a region to select - North West and Yorkshire are active, North East due in 2019

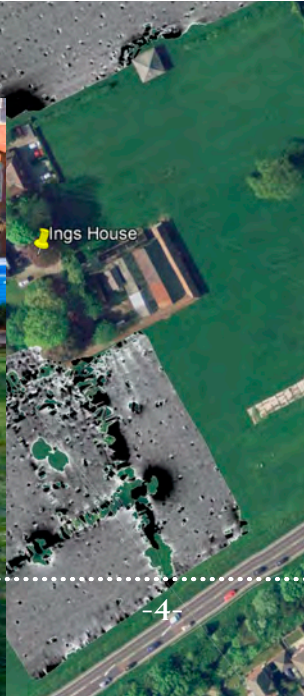
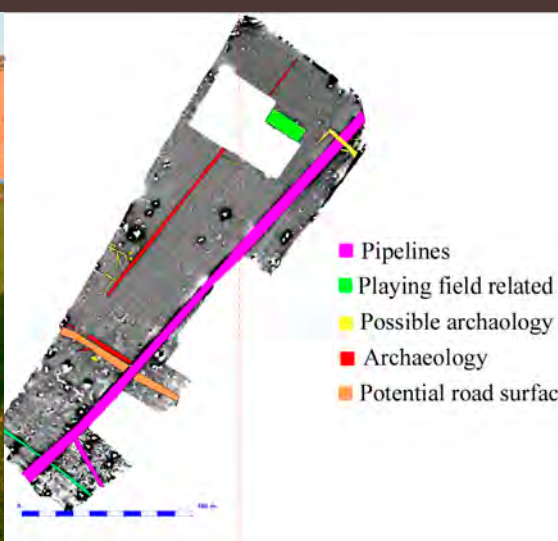


2018
 A NEW ONLINE RESOURCE

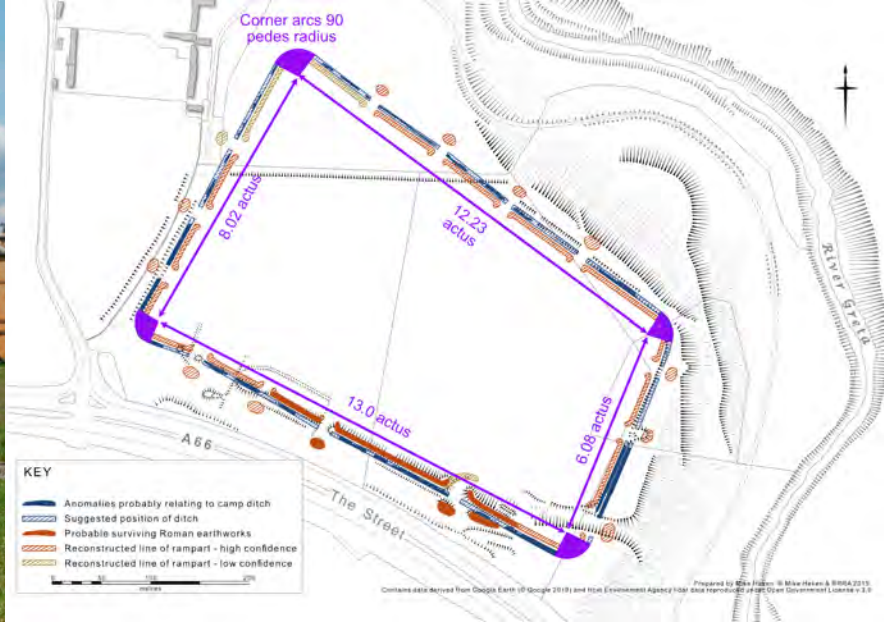
- **A Gazetteer**
 Launching with Yorkshire (964 miles, about 10% of the nation's Roman roads), the gazetteer, when completed, will present the results of the first comprehensive survey of all Britain's Roman roads since Ivan Margary's final edition of "Roman Roads in Britain" in 1973. David Ratledge's famous Lancashire and Cumbria pages can still be accessed from here ([David Ratledge and Neil Buckley's Cheshire pages added - November 2018](#))
- **Margary's Numbering System**
 An account of the system devised by Ivan Margary to number Britain's Roman roads, which the RRRA is now extending to cover all Roman roads discovered since Margary's death in 1976.
- **A new interpretation of the British Section of the Antonine Itinerary**
 taking into account recent archaeological discoveries. The first major re-appraisal since Prof. A.L.F. Rivet's landmark work in the 1970s.
- **A look at the British chapters of the Notitia Dignitatum**
 Including some new interpretations.
- **Descriptions of the Peutinger Table, Ravenna Cosmography, Ptolemy's Geography**
- **A look at the story of De Situ Britanniae,**
 The document that would have been as invaluable to students of Roman Britain as the Antonine Itinerary, had it not been a hoax perpetrated by Charles Bertram in the 18th century.
- **Glossary**

The Roads of Roman Britain project was launched, after two years background work, with Yorkshire and North West England added to the gazetteer

James Lyall leading our first geophysics training in the grounds of the old Bootham Hospital, in York- most of those present still take part.



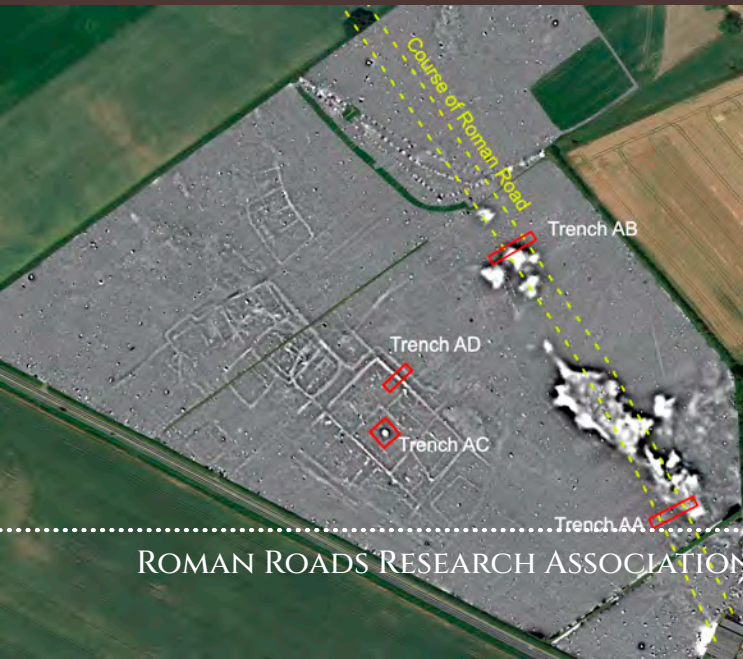
2019



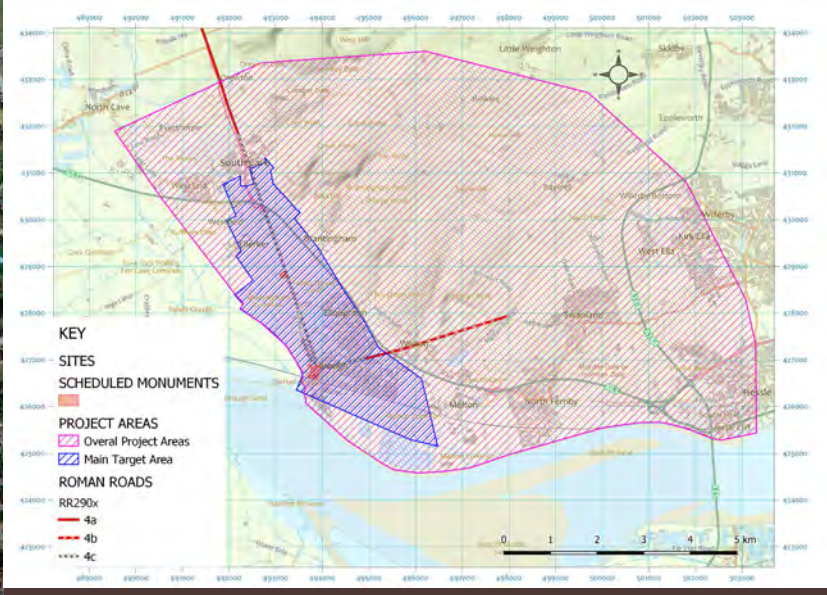
Our new geophysics team was extremely busy. Here, our gradiometer survey at Rokeby Park, Co.Durham, confirmed the presence of an unusual Roman temporary camp, of the same group that includes Rey Cross and Crackenthorpe.



In challenging weather, we conducted surveys and excavation on Dere Street (RR8a) and an adjacent Romano British settlement. 110 volunteers took part, helping us better understand the road, we even found wheel ruts confirming the use of wheeled vehicles during its construction. We also confirmed that the settlement was of relatively high status.



2020



The 'Life Beyond the Town: Petuaria' project began, aiming to examine the impact of the establishment of the Roman town on the surrounding landscape. Covid 19 restrictions allowed us to survey at Brough Gold Club whilst it was closed.

As part of our project examining the conquest period advance along what is now the A1 corridor north of Doncaster, surveys were conducted at Roelcliffe (Roman fort), Burton Leonard (not a Roman fort), with fieldwalking on a previously unknown extra-mural settlement in Yorkshire. Conditions may sometimes be awful, but our volunteers are always cheerful!



MILLE·VIAE·
ITINERA
 VOLUME I
 2021

"A thousand roads lead men forever to Rome"
 JOURNAL OF THE
 ROMAN ROADS RESEARCH ASSOCIATION
 Alain de Lillo 1/5



2021

Work continued on our project examining the conquest period advance along the south to north corridor for 80 miles north of Doncaster, with excavation on one of two Roman temporary camps revealed by one of our geophysical surveys. The peculiar feature next to the SW corner of the camp marked in yellow turned out to be a bronze age barrow, into which the Roman army had sunk eight ovens (one of which is shown half sectioned bottom left). Note the late Iron Age trackway, which we suspect was used by the army before any roads were built. The site is sensitive, and its location cannot be revealed.

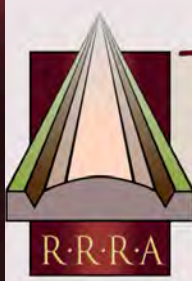
Volume 1 of our peer reviewed journal, *Itinera*, was published. All the design, layout, compilation, editing and typesetting is done by a large team from our membership. This volume, like all *Itineras* to follow, was made open-access online after 12 months



Measurements are in pes monetalis, and appear to have been from ditch centres.
 However, measured in pes Drusianus. Camp A could potentially have been set out as 7 x 5 Actus along the rampart.



MILLE·VIAE·
ITINERA
 VOLUME II
 2022
 CAESAR·PE
 REGULA·
 ROMAN
 "A thousand roads
 lead men forever to

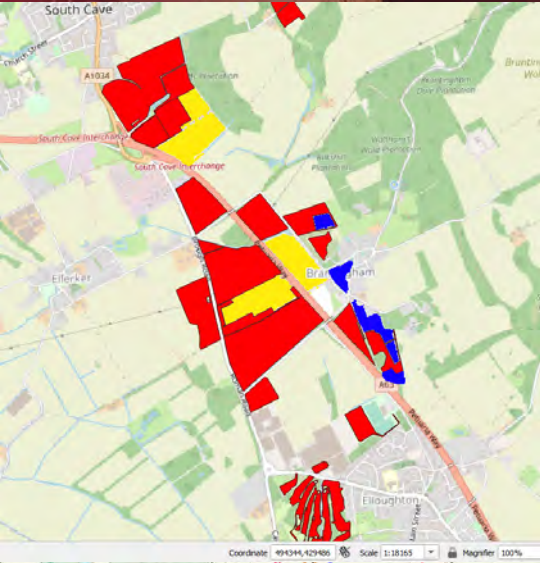


ROMAN·ROADS·RESEARCH
 ASSOCIATION

R·R·R·A

a charity registered in England and Wales, no. 1163854

LECTURE PROGRAMME
 2022-3

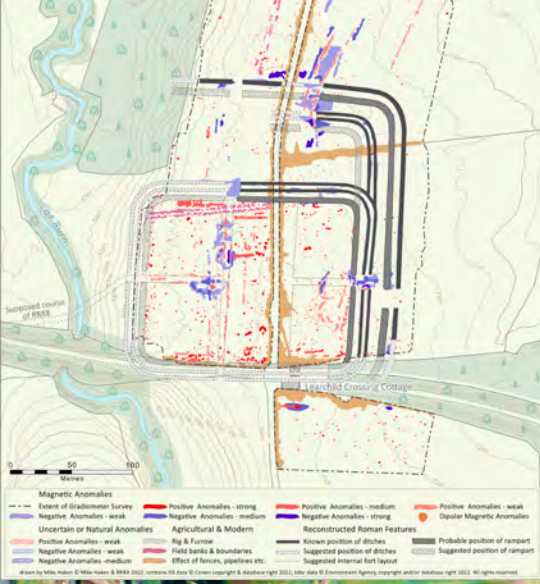


Itinera Vol. 2 was published in late spring, and work on Vol. 3 is underway.

Our Lecture Programme was established in 2021 (wouldn't fit on that page!) and our 2022-3 programme is possibly the best yet. Talks are free of charge, and open to everyone, members or not, and usually attract audiences of over a hundred.

The 'Life Beyond the Town : Petuaria' project continues. The map shows completed survey in red, with fields for which permissions have been obtained in yellow - still a long way to go, but at least we have proved that the Roman road (RR2e) is not under the modern road, as is marked on all maps.

With the help of many local volunteers, we undertook a gradiometer survey over three days at Low Leachild Roman Fort, in Northumberland, which was previously poorly understood.



2022

PROGRESS IN 2022

MEMBERSHIP

The rapid rate of increase in membership numbers during 2020-1 has slowed, and our aim of achieving 500 members by the end of October 2022 has not been met as a consequence. It seems that Covid 19 may be a contributory factor. Put simply, during lockdown people found themselves with time on their hands to spend online, with more people with more people learning about our work as a result. Since then, the rate of increase has slowed, with an additional factor of economic turbulence forcing more people to consider their outgoings, with society subscriptions taking a hit, a problem recognised across the sector. Membership currently stands at 451, and seems to be roughly static.

ITINERA

Whilst the content of Vol. 2 was in our opinion excellent, sales have been disappointing, almost 25% down on the previous year, despite an increased membership. The economic situation may have played some part in this.

Offers of papers for Vol. 3 have been less than expected, with some promised papers not materialising, not the first time that has happened! That said, we have some excellent material, including a paper from the Netherlands on the site that yielded the well known inscription on one of the oak piles, and one on a major excavation by Oxford Archaeology on a site near Corby.

QGIS GUIDE

A guide intended to help our members learn the basics of QGIS with a particular view to processing lidar imagery has been compiled by two of our members, Paul Smith and Neil Buckley. The guide is currently being edited and amended, and should be released soon.

GEOPHYSICAL SURVEYS

Work has continued with our two main projects.

Life Beyond the Town: Petuaria has struggled slightly with volunteer numbers, the majority of work being done by just the same three people, plus our professional consultant archaeologist, James Lyall. This is partly due to some disappointing results in areas where we had anticipated interesting archaeology. There are still some interesting areas to complete, particularly close to the Brantingham Villa site, and over an area of apparent settlement to the south east of South Cave.

The work on the south-north corridor, now dubbed the **Roman A1** project, is also moving forwards, with the focus currently being just north of the R. Wharfe, near to the medieval road known as Rudgate. This will be reported in detail in due course.

In addition, we have undertaken two further surveys.

The first, on Carlisle Cricket Club and in Rickerby Park, Carlisle, was part of the celebrations to mark 1900 years since the emperor Hadrian's visit to the Wall, and the response from local volunteers was overwhelming. Sadly, the depth of alluvial deposit was too great to yield any results over much of the site, with the notable exception of a small area adjacent to the supposed liner of the Vallum below Stanwix Roman Fort. Here there were clear indications of settlement, with possible structures.

The second survey is part of our **Devil's Causeway Project**, which had previously stalled before getting going thanks to Covid. The fort at Low Learchild had been known for some time, however investigations were limited to two small very small excavations, and our knowledge of the site limited. Three days survey took place on the site (see p.11), which revealed some of the interior layout of the fort, a possible annexe, and what may either be an earlier larger fort or an outwork of some kind. We also surveyed part of a field where the road from High Rochester is supposed to meet the Devil's Causeway, but no trace of either road could be seen. Work was carried out by volunteers from the RRRRA, and from the Holystone History and Archaeology Group

EXCAVATION

No excavation was undertaken in 2020. It was felt that our two previous excavations needed to be written up, at least to an interim level, before embarking on any further projects.

ROADS OF ROMAN BRITAIN

No progress has been made on this project since early 2019. This has been partly due to difficulties in accessing HERs due to Covid 19 restrictions, but mainly due to the task of preparing the online entries being down to a single individual, our chairman, Mike Haken. The database that was intended to accompany the gazetteer was constructed, and appears to function well. It remains on a Virtual Private Server (VPS) but the online interface was not completed. Unfortunately, the volunteer in charge (who was not a member) no longer has sufficient time to devote to it.

LOOKING FORWARDS.....

In this section we will look at the main areas of our activity in turn, and taking on board the comments in the previous section, will assess the measures necessary to ensure the Association and its projects move forward on schedule and to the desired high standard.

GENERAL INCOME AND EXPENDITURE

As it stands, our combined membership subscriptions and Itinera receipts are insufficient to cover our usual annual outlay, which is generally in the order of £8,000 to £10,000, not including new capital items. Whilst we have previously been fortunate to be able to cover any shortfalls with funds from donations, it would be rash to assume that this will always be the case.

There are only two solutions.

1. Reducing expenditure, which would probably have to come from professional fees, meaning a reduction in the amount of fieldwork we can do at exactly the time when we need to be expanding it.
2. Increasing our revenue. This would mean ensuring that Itinera pays for itself, since this year it is running at a £500 loss (approximately), and will almost certainly have to be accompanied by an increase in the price we ask for each printed copy to £22 plus P&P, since next year's costs will be impacted by high inflation. In addition, we will have to consider reducing our print run. We may also have to consider raising membership fees, which have been static since our inception. However, at a time when everyone is having to consider their spending patterns, this would almost certainly result in a loss of members..

It will be proposed at our AGM that we increase membership modestly at this time, to £16 for an individual, and £24 for a couple, with a possible similar increase to be considered in a year's time if inflation continues at its current high rate.

ITINERA

Whilst the journal is healthy, Vol. 3 will probably be substantially thinner than the previous two. It was always recognised that it will take time for Itinera to be established as an archaeological journal, however in order for that to happen it is important that we find ways of attracting more content from the academic and commercial sectors, something which the Editorial committee are already considering. As referred to on p.12, a proposed rise in the price of the printed volume to £22 (in line with inflation) will be put to membership.

GEOPHYSICAL SURVEY AND EXCAVATION

These have been grouped together as the issues are essentially the same. Without question, both have been extremely successful in terms of work completed, but there are two significant issues going forwards, those of accidental geographical bias, and of reporting.

Geographical Bias

Of the 17 completed gradiometer surveys, one was in Northamptonshire, two in Northumberland, one in Cumbria, one in Durham, and the remaining 12 in Yorkshire. The two major projects we are running are also both in Yorkshire. The reasons for this apparent bias to Yorkshire and the north is not a deliberate

choice, rather it is simply down to historical accident, the surviving founder being a Yorkshireman from Northallerton, and therefore Yorkshire is naturally where the early work began. As a result, all the members who are able to use the equipment unsupervised live in Yorkshire, including our consultant archaeologist, James Lyall, who whilst receiving professional fees for his work for us, also gives us a considerable amount of his time without charge.

Whilst operating the equipment during a survey is relatively straightforward, it takes a minimum of five days training before anyone with no previous experience is usually capable of setting up a survey unaided, and often considerably longer. Therefore, using our gradiometer array in, for example, Dorset, is not merely a matter of arranging for the equipment to be taken 300 miles and letting a set of untrained volunteers get on with it. Rather, it is essential that someone capable of training the new recruits be present. To date, that task has fallen to James Lyall, who has provided the training in all the surveys undertaken to date outside Yorkshire. Whilst James is willing to travel, he needs to earn a living and therefore be paid for his time, which means that as an Association with limited funds, we need to be sure that any proposed survey any significant distance away from Yorkshire is justifiable.

Surprisingly though, the issue of cost and justification is not currently the main problem. Despite repeatedly asking our members for suggestions as to potential projects, we have had only a handful of suggestions, and none which have so far proved viable.

Reporting

When embarking on our programme of fieldwork, it had been hoped that we would be able to train a number of our members to compile the necessary reports. Unfortunately, that appears to have been a little naïve, since in four years of work only one member has acquired the necessary skills and experience, and it is unrealistic and unfair to expect one person to undertake all the writing up. This problem applies to both geophysical survey and to excavation. Clearly, it is pointless undertaking fieldwork unless the results can be disseminated.

Potential solutions

Dealing with report writing first, a potential solution has been suggested whereby the RRRRA would pay for a professional archaeologist to write the basic text for each report, but with the involvement of a group of volunteers. The archaeologist, may, if appropriate (and if it was felt there were sufficiently capable volunteers), award certain tasks of illustration, additional research and compilation to individuals in small discreet chunks, as and when required. This way, volunteers would learn about each individual element of report writing without the weight of responsibility for the entire task. This method will be trialed soon, and if successful, this method may alleviate the problem going forward whilst helping to keep costs down.

With regard to potential sites/projects for fieldwork, we continue to hope that our membership may provide suggestions and at least a partial solution. Should that not come to pass, we will make a concerted effort to identify potential projects by consulting HERs and key individuals such as County archaeologists, across the entire country. This would not be done in an ad hoc fashion, rather it would be in concert with the regional progress of the gazetteer.

ROADS OF ROMAN BRITAIN

This project is, of course, the embodiment of what the RRRRA was founded to do. As already mentioned on p.13, its current frozen state has been largely due to the entire responsibility for compiling the web pages falling to one person, our current chair. Our aim is to recruit a few members who would be willing to learn to use the software and assist with the steady progression of the gazetteer over the coming years - anyone with a reasonable familiarity with desk-top publishing or modern graphics packages should be able to do this.

However, moving forwards, the issue is not simply one of page building, since a page cannot be built without the text and illustrations to go on it and the issue here is again one of personnel. In order to ensure that each road is thoroughly researched and investigated, there is an exhaustive process to go through (which was defined and detailed some years ago), to ensure that all relevant information is considered. Of necessity, this is extremely time consuming and is far from just a simple case of drawing the line of a road on a map.

There are three potential solutions to this problem:

1. We recruit volunteers willing to devote the time to compile all the necessary data for each road, and then write an account
2. We divide responsibility, with some volunteers compiling all the base data, whilst other volunteers are tasked with taking that data and writing the final text and creating any necessary illustrations.
3. We take option 2. a stage further, and appoint professional archaeologists to co-ordinate the work in each region, utilising volunteers wherever possible. Of course, this route will prove extremely expensive, potentially a large six figure sum.

A FIVE YEAR PLAN

To summarise this report, the Association is achieving a great deal, of which we should all be extremely proud. However, some of the core objectives for which the RRRRA was established are clearly not being met, for reasons which largely come down to a current lack of sufficient volunteer resources, appropriate skills, time, funding, and management. Over the coming months, the trustees will be putting together a clear plan, in effect a business plan, which will address all these highlighted issues and suggest a route forward over the next five years, where we can build on our successes, and achieve the lofty ambitions which led to the establishment of the RRRRA in the first place.

STRUCTURE, GOVERNANCE & MANAGEMENT

LEGAL STRUCTURE

The Roman Roads Research Association was established as a Charitable Incorporated Organisation in October 2015, and is registered as a charity with the Charity Commission, no. 1163854

ENSURING OUR ACTIVITIES ACHIEVE OUR CHARITABLE AIMS

The Roman Roads Research Association's objectives, as set out in our constitution are to advance the education of the public in general about the Roman road network in Britain and promote the study of Roman roads and Roman heritage more generally. In particular, we do this (but not exclusively) by

- carrying out research into the course and construction of individual Roman roads.
- promoting the study of Roman roads and associated sites by community groups and organisations.
- presenting talks, lectures and displays to the general public, schools and community groups
- publishing the results of research and excavation.

Having considered the guidance on public benefit issued by the Charity Commission, in particular Section 17 of the Charities Act 2011, the trustees take the view that it is not only important that the results of our activities have public benefit, but that the activities themselves should do so. To this end, it is our policy that whilst our archaeological activities may be professionally led, the bulk of the actual work should be carried out by volunteers, with a focus on local communities, not just our own membership. To achieve our aims and maintain a policy of volunteer focus, we have created five projects/activities to develop over the coming few years.

1. **Itinera**, our annual journal, is the world's only peer reviewed periodical dedicated to Roman roads studies. This is a major achievement, with all the editorial work, design, layout, content collation, and typesetting, done in-house with a large team of over thirty volunteers. Unlike most archaeological journals, Itinera is not constrained by a publisher's paywall, and we make all content open access after just twelve months.
2. **Talks and Seminars**. We have an established season of talks, now held from autumn to spring, focused on Roman infrastructure in Britain and beyond. Our policy is one of accessibility, so all are held on Zoom, are free of charge, and are open to all.
3. **Archaeological excavations**. These are held either on Roman roads themselves, or at Roman period sites alongside a Roman road. Sites are carefully selected so that they not only answer important archaeological questions, but also with regard to attracting interest from the community, particularly from those with no previous experience of archaeology. The reports are submitted through OASIS and made publicly available online via the Archaeology Data Service.
4. **Geophysical survey**, using our own gradiometer array. The first phase was designed to examine the development of Roman infrastructure during the early years of conquest in a 80 mile long corridor from just south of Doncaster to Scotch Corner and beyond. The experience gained from this first phase is now being used to examine other sites in northern Britain, with aims to expand into southern Britain

as soon as practicable. Our aim, as always, is to encourage as much involvement as possible within local communities, both in learning from the results of the surveys, as well as getting involved in the surveys themselves, where they will receive full training. As with excavation, results will be made publicly available online.

5. **Online Gazetteer & Database**, which aims to provide an up to date and comprehensive picture of the Roman road network in Britain. This project has suffered from major technical issues, and skills shortages, but we aim to get it back on track in 2023

ORGANISATIONAL STRUCTURE

Our **Board of Trustees** makes sure the RRRRA is governed effectively and responsibly. The Trustees are responsible for us delivering our charitable objectives and for ensuring that we are governed in accordance with our Constitution. Whilst we have managed with just a single trustee for the past two years, which placed responsibility on just one person, two additional trustees have now been appointed and in accordance with our constitution are now standing for election at our AGM in November 2022. We aim to expand that number to a total of five during the next year.

The trustees delegate some functions of management to committees and working groups, drawn from our membership, in order to deliver our five main activities. Whilst a committee will be run fairly formally with regular meetings having an agenda and minutes, the membership and running of our working groups is maintained on a much more informal basis, always remembering that we are all volunteers often with busy lives outside the RRRRA. Our current committees and groups are listed below:

- The **Itinera Committee** is responsible for the preparation and publication of our peer-reviewed journal, Itinera, and is assisted by an advisory panel which may from time to time include specialists from outside our membership. It generally meets monthly, or at greater intervals should that be more appropriate.
- The **Website working group**, currently with just three members, has been tasked with improving the functionality of our websites, with particular regard to allowing members to use personal logins, and addressing some technical current issues with membership payments. We are seeking additional group members to assist with updating the content of the website.
- The **Seminar and Talks working group** has five members, who ensure the smooth running of all our talks and seminars held online (currently via Zoom). Responsibility for organising the programme rests with our Talks and Seminars Coordinator, a position currently vacant.
- **Fieldwork working group**. A very informal group of four, tasked with organising the RRRRA's geophysical surveys and excavations. Additional members of the group, particularly from southern Britain, are needed to help ensure a more equal geographical coverage.

FINANCIAL REVIEW

INCOME

	2021-2022 (£)	2020-2021 (£)
Membership Subscriptions	6196	6144
Donations & Bequests	20005	47
Itinera (journal) sales	1588	2200
Total Income	27789	8391

Income from subscriptions has remained broadly static over the past year, as membership numbers remained broadly level at about 450. It is possible that the growth experienced in the previous year was artificially inflated by the impact of Covid 19, with more people at home with spare time, of whom a significant number have not renewed their memberships once returning to more normal activities.

We have been extremely fortunate to receive an extremely generous gift of £20,000 which had been pledged to us in the previous year.

EXPENDITURE

	2021-2022 (£)	2020-2021 (£)
Fieldwork Costs	6635	5779
Itinera Production	2152	2246
Outreach (Talks, exhibition, etc.)	2529	955
Other	291	316
Total Expenditure	11606	9295

Slight increases in fieldwork costs has been largely due to post excavation expenses relating to our excavation in September 2021. The increase in Outreach was largely down to the purchase of a high quality and heavy duty pop-up gazebo, along with accompanying exhibition material, to enable us to have a presence at outdoor heritage related events.

UNRESTRICTED FUNDS

	2021-2022 (£)	2020-2021 (£)
Cash funds this year end	22724	6541

RESERVES

In order to ensure the maintenance of our core activities, and in accordance with good practice as recommended by the Charity Commission, it has been the Trustees' stated aim to establish a reserve fund, to hold sufficient funds to maintain our scheduled activities for twelve months. This year we have finally acquired sufficient funds in order to set up the fund, arrangements for which are in progress. Given the current economic uncertainties, and the possibility of recession, the Association will need to take a cautious approach to expenditure in the coming year with regard to general expenditure. There are no planned major purchases in the coming year, and it seems likely that other expenses will remain fairly static. Whilst our aim should be to keep the costs of general activities to below the income from subscriptions and Itinera sales, that is currently unrealistic, so the Reserve fund will initially stand at £9,500, 20% higher than our anticipated income (excluding donations). The fund will be carefully and ethically invested.

TRUSTEES

Michael S Haken Chair

Albert Hills Treasurer (subject to confirmation at AGM)

Robert Entwistle (subject to confirmation at AGM)

DECLARATION

The trustees declare that they have approved the trustees' report above.

Signed on behalf of the charity's trustees

Signature(s)

A handwritten signature in black ink, appearing to read 'Michael Stuart Haken', is written over a light grey dotted grid background.

Michael Stuart Haken (Chair)

15 November 2022



CHARITY COMMISSION
FOR ENGLAND AND WALES

Roman Roads Research Association

1163854

Receipts and payments accounts


CC16a

For the period from	01-Nov-21	To	31-Oct-22
---------------------	-----------	----	-----------

Section A Receipts and payments

	Unrestricted funds to the nearest £	Restricted funds to the nearest £	Endowment funds to the nearest £	Total funds to the nearest £	Last year to the nearest £
A1 Receipts					
Subscriptions	6,196	-	-	6,196	6,144
Donations	20,005	-	-	20,005	47
Itinera (journal) Vol 1 sales	96	-	-	96	2,200
Itinera (journal) Vol 2 sales	1,492	-	-	1,492	-
	-	-	-	-	-
	-	-	-	-	-
	-	-	-	-	-
Sub total (Gross income for AR)	27,789	-	-	27,789	8,391
A2 Asset and investment sales, (see table).					
	-	-	-	-	-
	-	-	-	-	-
Sub total	-	-	-	-	-
Total receipts	27,789	-	-	27,789	8,391
A3 Payments					
Professional archaeological services	4,859	-	-	4,859	5,566
Itinera Printing, P&P	2,152	-	-	2,152	2,246
Meeting & seminar costs	425	-	-	425	373
Excavation expenses	832	-	-	832	-
Post-Excavation costs	696	-	-	696	-
Insurance	248	-	-	248	213
Printing & Stationery	-	-	-	-	120
Internet fees	488	-	-	488	462
Software	-	-	-	-	48
Display and Exhibition costs	1,616	-	-	1,616	-
Miscellaneous	127	-	-	127	80
Paypal Fees	164	-	-	164	188
	11,606	-	-	11,606	9,295
A4 Asset and investment purchases. (see table)					
	-	-	-	-	244
	-	-	-	-	-
Sub total	-	-	-	-	244
Total payments	11,606	-	-	11,606	9,538
Net of receipts/(payments)	16,183	-	-	16,183	- 1,147
A5 Transfers between funds	-	-	-	-	-
A6 Cash funds last year end	6,541	-	-	6,541	7,688
Cash funds this year end	22,724	-	-	22,724	6,541

Section B Statement of assets and liabilities at the end of the period

Categories	Details	Unrestricted funds to nearest £	Restricted funds to nearest £	Endowment funds to nearest £
B1 Cash funds	Natwest Current Account	20,419	-	-
	Paypal Balance	2,305	-	-
		-	-	-
	Total cash funds	22,724	-	-
	(agree balances with receipts and payments account(s))	OK	OK	OK
B2 Other monetary assets	Details	Unrestricted funds to nearest £	Restricted funds to nearest £	Endowment funds to nearest £
		-	-	-
		-	-	-
		-	-	-
		-	-	-
		-	-	-
B3 Investment assets	Details	Fund to which asset belongs	Cost (optional)	Current value (optional)
			-	-
			-	-
			-	-
			-	-
B4 Assets retained for the charity's own use	Details	Fund to which asset belongs	Cost (optional)	Current value (optional)
	Projector, Screen & AV	Unrestricted	850	320
	Excavation Tools & Equipment	Unrestricted	1,959	800
	Software	Unrestricted	404	160
	Sensys Gradiometer Array	Unrestricted	32,432	16,000
	Trimble R8s GPS base & Rover	Unrestricted	18,752	9,000
	Heavy Duty Gazebo and displays	Unrestricted	1,616	1,500
			-	-
B5 Liabilities	Details	Fund to which liability relates	Amount due (optional)	When due (optional)
			-	
			-	
			-	
			-	
Signed by one or two trustees on behalf of all the trustees	Signature	Print Name	Date of approval	
		Michael Stuart Haken	13/11/2022	



Section A

Independent Examiner's Report

Report to the trustees

Charity Name

Roman Roads Research Association

**On accounts for the year
ended**

31/10/2022

**Charity no
(if any)**

1163854

Set out on pages

CCXX R1 accounts and CCXX R2 accounts, attached

(remember to include the page numbers of additional sheets)

I report to the trustees on my examination of the accounts of the above charity ("the Trust") for the year ended 31/10/2022.

**Responsibilities and
basis of report**

As the charity's trustees, you are responsible for the preparation of the accounts in accordance with the requirements of the Charities Act 2011 ("the Act").

I report in respect of my examination of the Trust's accounts carried out under section 145 of the 2011 Act and in carrying out my examination, I have followed all the applicable Directions given by the Charity Commission under section 145(5)(b) of the Act.

**Independent
examiner's statement**

I have completed my examination. I confirm that no material matters have come to my attention in connection with the examination which gives me cause to believe that in, any material respect:

- the accounting records were not kept in accordance with section 130 of the Charities Act; or
- the accounts did not accord with the accounting records; or
- the accounts did not comply with the applicable requirements concerning the form and content of accounts set out in the Charities (Accounts and Reports) Regulations 2008 other than any requirement that the accounts give a 'true and fair' view which is not a matter considered as part of an independent examination.

I have no concerns and have come across no other matters in connection with the examination to which attention should be drawn in this report in order to enable a proper understanding of the accounts to be reached.

Signed:

Peter Russell

Date:

29/07/24

Name:

Mr Peter Russell

**Relevant professional
qualification(s) or body
(if any):**

ACA, ATII

Address:

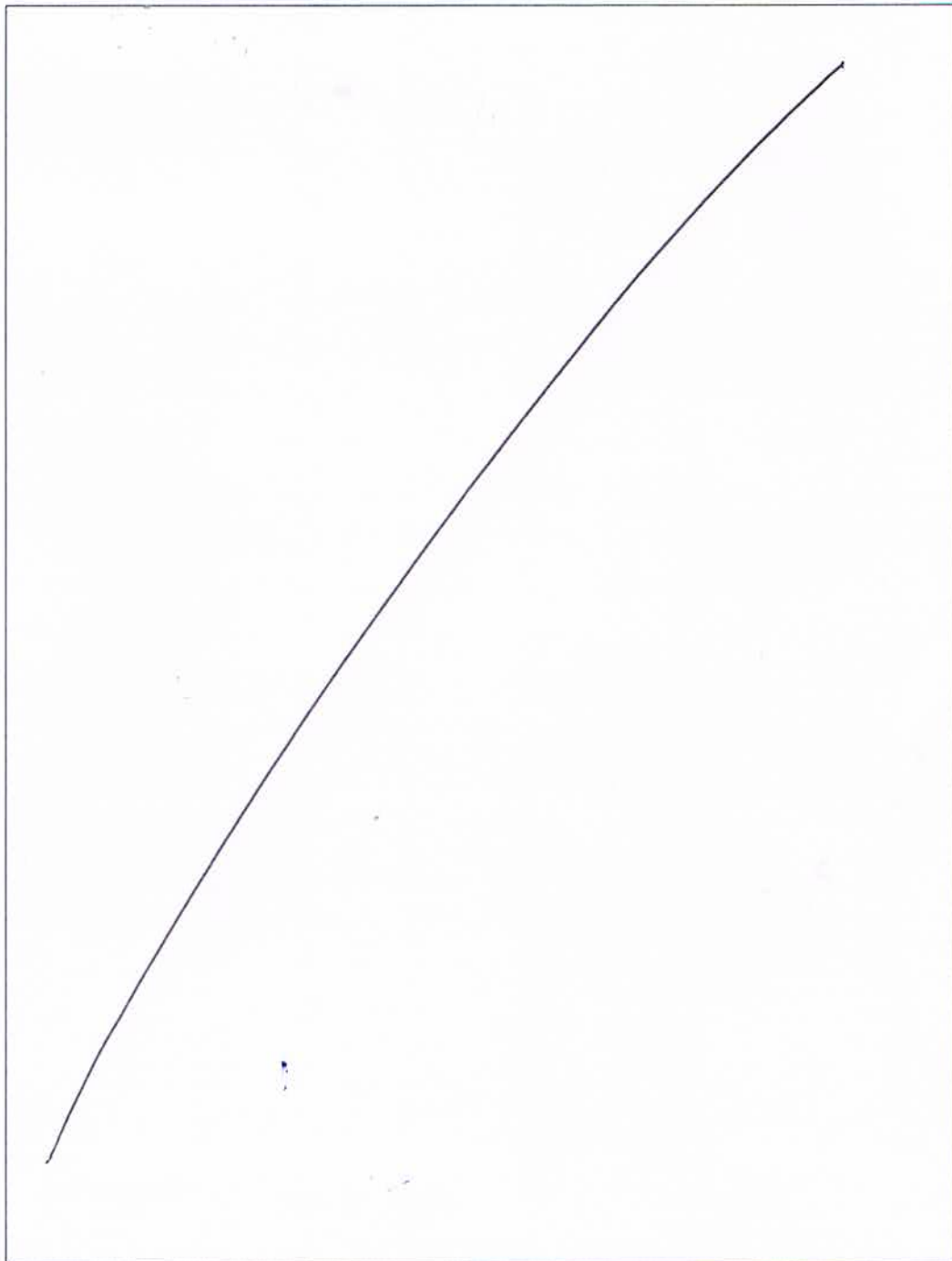
85 Main St, East Bridgford, Nottinghamshire, NG13 8NH

Section B

Disclosure

Only complete if the examiner needs to highlight material matters of concern (see CC32, Independent examination of charity accounts: directions and guidance for examiners).

Give here brief details of any items that the examiner wishes to disclose.





CHARITY COMMISSION
FOR ENGLAND AND WALES

Roman Roads Research Association

1163854

Receipts and payments accounts

CC16a

For the period
from

01-Nov-21

To

31-Oct-22

Section A Receipts and payments

	Unrestricted funds to the nearest £	Restricted funds to the nearest £	Endowment funds to the nearest £	Total funds to the nearest £	Last year to the nearest £
A1 Receipts					
Subscriptions	6,196	-	-	6,196	6,144
Donations	20,005	-	-	20,005	47
Itinera (journal) Vol 1 sales	96	-	-	96	2,200
Itinera (journal) Vol 2 sales	1,492	-	-	1,492	-
	-	-	-	-	-
	-	-	-	-	-
	-	-	-	-	-
Sub total (Gross income for AR)	27,789	-	-	27,789	8,391
A2 Asset and investment sales, (see table).					
	-	-	-	-	-
Sub total	-	-	-	-	-
Total receipts	27,789	-	-	27,789	8,391
A3 Payments					
Professional archaeological services	4,859	-	-	4,859	5,566
Itinera Printing, P&P	2,152	-	-	2,152	2,246
Meeting & seminar costs	425	-	-	425	373
Excavation expenses	832	-	-	832	-
Post-Excavation costs	696	-	-	696	-
Insurance	248	-	-	248	213
Printing & Stationery	-	-	-	-	120
Internet fees	488	-	-	488	462
Software	-	-	-	-	48
Display and Exhibition costs	1,616	-	-	1,616	-
Miscellaneous	127	-	-	127	80
Paypal Fees	164	-	-	164	188
	11,606	-	-	11,606	9,295
A4 Asset and investment purchases. (see table)					
	-	-	-	-	244
Sub total	-	-	-	-	244
Total payments	11,606	-	-	11,606	9,538
Net of receipts/(payments)	16,183	-	-	16,183	- 1,147
A5 Transfers between funds	-	-	-	-	-
A6 Cash funds last year end	6,541	-	-	6,541	7,688
Cash funds this year end	22,724	-	-	22,724	6,541

Section B Statement of assets and liabilities at the end of the period

Categories	Details	Unrestricted funds to nearest £	Restricted funds to nearest £	Endowment funds to nearest £
B1 Cash funds	Natwest Current Account	20,419	-	-
	Paypal Balance	2,305	-	-
		-	-	-
	Total cash funds	22,724	-	-

(agree balances with receipts and payments account(s))

OK OK OK

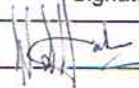
Categories	Details	Unrestricted funds to nearest £	Restricted funds to nearest £	Endowment funds to nearest £
B2 Other monetary assets		-	-	-
		-	-	-
		-	-	-
		-	-	-
		-	-	-
		-	-	-

Categories	Details	Fund to which asset belongs	Cost (optional)	Current value (optional)
B3 Investment assets			-	-
			-	-
			-	-
			-	-
			-	-

Categories	Details	Fund to which asset belongs	Cost (optional)	Current value (optional)
B4 Assets retained for the charity's own use	Projector, Screen & AV	Unrestricted	850	320
	Excavation Tools & Equipment	Unrestricted	1,959	800
	Software	Unrestricted	404	160
	Sensys Gradiometer Array	Unrestricted	32,432	16,000
	Trimble R8s GPS base & Rover	Unrestricted	18,752	9,000
	Heavy Duty Gazebo and displays	Unrestricted	1,616	1,500
				-

Categories	Details	Fund to which liability relates	Amount due (optional)	When due (optional)
B5 Liabilities			-	
			-	
			-	
			-	
			-	

Signed by one or two trustees on behalf of all the trustees

Signature	Print Name	Date of approval
	Michael Stuart Haken	13/11/2022

ROMAN ROADS RESEARCH ASSOCIATION

England & Wales - Charity number 1163854

Accounts



Trustees' Annual Report for the period

From 1st November 2020 To 31st October 2021

Charity name: Roman Roads Research Association

Charity registration number: 1163854

Objectives and Activities

	SORP reference	
Summary of the purposes of the charity as set out in its governing document	Para 1.17	To advance the education of the public in general about the Roman road network in Britain and promote the study of Roman roads and Roman heritage more generally, in particular but not exclusively by (1) carrying out research into the course and construction of individual Roman roads. (2) promoting the study of roman roads and associated sites by community groups and organisations. (3) presenting talks, lectures and displays to schools and community groups (4) publishing the results of research and excavation.
Summary of the main activities in relation to those purposes for the public benefit, in particular, the activities, projects or services identified in the accounts.	Para 1.17 and 1.19	(1) A series of archaeological excavations. These will be held either on Roman roads themselves, or at Roman period sites alongside a Roman road. Sites will be carefully selected so that they not only answer important archaeological questions, but also have the potential to attract interest from the community, particularly from those with no previous experience of archaeology. The reports will all be made publicly available both online, and directly to the community. (2) A major programme of geophysical survey, using our recently purchased gradiometer array. Geophysical survey is a non-invasive method which can reveal features that may survive unseen beneath the ground surface. The first phase of this programme has been designed to look specifically at how the road network and associated Roman military sites developed in the early years of conquest in a 80 mile long corridor from just south of Doncaster reaching to Scotch Corner and beyond. We aim to use the experience gained during this first phase as a model to roll

		<p>out similar work in other parts of the country. Our aim, as always, is to encourage as much involvement as possible within local communities, both in learning from the results of the surveys, as well as getting involved in the surveys themselves, where they will receive full training. As with excavation, results will be made publicly available online.</p> <p>(3) We are developing a unique online database, with an interactive public interface, to provide an up to date and comprehensive picture of the Roman road network in Britain. Crucial to this is the collation of existing data, alongside further research, which is currently being conducted nationwide by a group of trained volunteers, each working in their local area</p>
Statement confirming whether the trustees have had regard to the guidance issued by the Charity Commission on public benefit	Para 1.18	<p>Having considered the guidance on public benefit issued by the Charity Commission, the trustees take the view that it is not only important that the results of our activities have public benefit, but that the activities themselves should do so. To this end, it is our policy that whilst our archaeological activities may be professionally led, the bulk of the actual work should be carried out by volunteers, with a focus on local communities, not just our own membership. To this end, we have created three main projects to develop over the coming few years.</p>

Additional information (optional)

You may choose to include further statements where relevant about:

	SORP reference	
Policy on grant making	Para 1.38	
Policy on social investment including program related investment	Para 1.38	
Contribution made by volunteers	Para 1.38	Whilst our field work has all been professional led, at least in the early stages, the contribution made by volunteers has been immense, indeed progress would have been impossible without them
Other		

Achievements and Performance

	SORP reference	
<p>Summary of the main achievements of the charity, identifying the difference the charity's work has made to the circumstances of its beneficiaries and any wider benefits to society as a whole.</p>	<p>Para 1.20</p>	<p>Just as in the previous year, activities in the field during 2019/20 were curtailed due to Covid 19 restrictions, although some fieldwork was possible.</p> <p>Continuing our work along the main south to north Roman road corridor in Yorkshire, a small excavation in September 2021 confirmed the presence of a 1st century AD Roman temporary camp, at a site north west of Doncaster, identified by our geophysics team during previous work. Due to the sensitive nature of the site, it was not possible to involve the local community on this occasion, and work was conducted entirely by RRRRA members.</p> <p>Geophysical survey continued as part of our project, 'Living Beyond the Town - Petuaria', between Brough and South Cave in the East Riding of Yorkshire. The survey continues to expand our knowledge of how the Roman presence at the town of Petuaria impacted on the indigenous population, or more accurately how it seems to have hardly impacted at all. Fifteen volunteers (mainly from the local area) have so far taken part, and the area covered to date is now in excess of 30Ha, although that would have been much more had it not been for the pandemic.</p> <p>The first volume of our own peer-reviewed journal, Itinera, was launched in June 2021. All editorial, design and typesetting work was undertaken by volunteers from our membership, rather than employing a major publishing house. As part of our desire to ensure all our work is accessible, a digital version of the journal will be made open access in spring 2022. The first volume proved a huge success, and work is underway producing Volume 2.</p> <p>Our membership has continued to grow rapidly, and has almost doubled for the second year running to 405. We hope to reach over 500 members by October 2022.</p>

Additional information (optional)

You may choose to include further statements where relevant about:

Achievements against objectives set	Para 1.41	Achievements in terms of fieldwork and research have been limited due to the pandemic, however all our targets have been achieved, and in the case of increased membership, well surpassed.
Performance of fundraising activities against objectives set	Para 1.41	
Investment performance against objectives	Para 1.41	
Other		

Financial Review

Review of the charity's financial position at the end of the period	Para 1.21	Our financial position in terms of cash funds has remained reasonably stable, with a slight decrease from £7688 to £6541. However, at the very end of our financial year, we were extremely fortunate to receive notification of a donation of £20,000, which will represent a major boost to our finances.
Statement explaining the policy for holding reserves stating why they are held	Para 1.22	It is our revised policy to aim build sufficient funds so as to have reserves large enough at any one time to fund our scheduled activities over the following twelve months, with an amount of at least 50% of expenditure maintained in our current account. Whilst there has been a setback due to Covid, the donation referred to above will enable us to achieve this goal during 2022, a year ahead of schedule
Amount of reserves held	Para 1.22	Zero
Reasons for holding zero reserves	Para 1.22	Over the current year, our income has been slightly greater than expenditure, however the balance in our current account remain only slightly over half anticipated expenditure and not yet sufficient to begin to establish reserves.
Details of fund materially in deficit	Para 1.24	None
Explanation of any uncertainties about the charity continuing as a going concern	Para 1.23	None currently, although for long term security we do need to raise sufficient funds to establish the reserves as outlined above.

Additional information (optional)

You may choose to include further statements where relevant about:

The charity's principal sources of funds (including any fundraising)	Para 1.47	Membership subscriptions and private donations.
Investment policy and objectives including any social investment policy adopted	Para 1.46	
A description of the principal risks facing the charity	Para 1.46	
Other		

Structure, Governance and Management

Description of charity's trusts:		None
Type of governing document (trust deed, royal charter)	Para 1.25	Constitution
How is the charity constituted? (e.g unincorporated association, CIO)	Para 1.25	CIO
Trustee selection methods including details of any constitutional provisions e.g. election to post or name of any person or body entitled to appoint one or more trustees	Para 1.25	Elected by membership

Additional information (optional)

You may choose to include further statements where relevant about:

Policies and procedures adopted for the induction and training of trustees	Para 1.51	
The charity's organisational structure and any wider network with which the charity works	Para 1.51	
Relationship with any related parties	Para 1.51	
Other		

Reference and Administrative details

Charity name	Roman Roads Research Association
Other name the charity uses	
Registered charity number	1163854
Charity's principal address	Ellerbeck Cottage, Ellerbeck, Northallerton, North Yorkshire, DL6 2RY

Names of the charity trustees who manage the charity

	Trustee name	Office (if any)	Dates acted if not for whole year	Name of person (or body) entitled to appoint trustee (if any)
1	Michael S Haken	Chairman		
2				
3				
4				
5				
6				
7				
8				
9				
10				
11				
12				
13				
14				
15				
16				
17				
18				
19				
20				

Corporate trustees – names of the directors at the date the report was approved

Director name		

Name of trustees holding title to property belonging to the charity

Trustee name	Dates acted if not for whole year	

Funds held as custodian trustees on behalf of others

Description of the assets held in this capacity	NONE
Name and objects of the charity on whose behalf the assets are held and how this falls within the custodian charity's objects	
Details of arrangements for safe custody and segregation of such assets from the charity's own assets	

Additional information (optional)

Names and addresses of advisers (Optional information)

Type of adviser	Name	Address

Name of chief executive or names of senior staff members (Optional information)

--

Exemptions from disclosure

Reason for non-disclosure of key personnel details

--

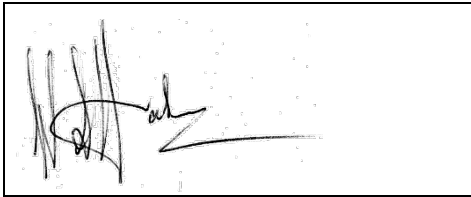
Other optional information

--

Declarations

The trustees declare that they have approved the trustees' report above.

Signed on behalf of the charity's trustees

Signature(s)		
Full name(s)	Michael Stuart Haken	
Position (eg Secretary, Chair, etc)	Chair	
Date	30 August 2022	



CHARITY COMMISSION
FOR ENGLAND AND WALES

Roman Roads Research Association

1163854

Receipts and payments accounts

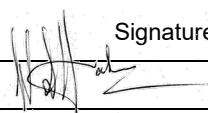
CC16a

For the period from	01-Nov-20	To	31-Oct-21
---------------------	-----------	----	-----------

Section A Receipts and payments

	Unrestricted funds to the nearest £	Restricted funds to the nearest £	Endowment funds to the nearest £	Total funds to the nearest £	Last year to the nearest £
A1 Receipts					
Subscriptions	6,144	-	-	6,144	4,298
Donations	47	-	-	47	8,043
Itinera (journal) sales	2,200	-	-	2,200	-
	-	-	-	-	-
	-	-	-	-	-
	-	-	-	-	-
	-	-	-	-	-
Sub total (Gross income for AR)	8,391	-	-	8,391	12,341
A2 Asset and investment sales, (see table).					
	-	-	-	-	-
	-	-	-	-	-
Sub total	-	-	-	-	-
Total receipts	8,391	-	-	8,391	12,341
A3 Payments					
Professional archaeological services	5,566	-	-	5,566	10,391
Itinera Printing, P&P	2,246	-	-	2,246	-
Meeting & seminar costs	373	-	-	373	-
Excavation expenses	-	-	-	-	-
Insurance	213	-	-	213	-
Printing & Stationery	120	-	-	120	37
Internet fees	462	-	-	462	463
Software	48	-	-	48	82
Paypal Fees	188	-	-	188	78
Miscellaneous expenses	80	-	-	80	11
	-	-	-	-	-
	-	-	-	-	-
Sub total	9,295	-	-	9,295	11,062
A4 Asset and investment purchases. (see table)					
Excavation & Geophysics Equipment	244	-	-	244	601
	-	-	-	-	-
Sub total	244	-	-	244	601
Total payments	9,539	-	-	9,539	11,663
Net of receipts/(payments)	- 1,147	-	-	1,169	678
A5 Transfers between funds	-	-	-	-	-
A6 Cash funds last year end	7,688	-	-	7,688	7,009
Cash funds this year end	6,541	-	-	6,541	7,687

Section B Statement of assets and liabilities at the end of the period

Categories	Details	Unrestricted funds to nearest £	Restricted funds to nearest £	Endowment funds to nearest £
B1 Cash funds	Natwest Current Account	2,909	-	-
	Paypal Balance	3,632	-	-
		-	-	-
	Total cash funds	6,541	-	-
	(agree balances with receipts and payments account(s))	OK	OK	OK
B2 Other monetary assets	Details	Unrestricted funds to nearest £	Restricted funds to nearest £	Endowment funds to nearest £
	Donation from AH received at end of financial year, and not yet in cash funds	20,000	-	-
		-	-	-
		-	-	-
		-	-	-
		-	-	-
B3 Investment assets	Details	Fund to which asset belongs	Cost (optional)	Current value (optional)
			-	-
			-	-
			-	-
			-	-
B4 Assets retained for the charity's own use	Details	Fund to which asset belongs	Cost (optional)	Current value (optional)
	Projector, Screen & AV	Unrestricted	850	400
	Excavation Tools & Equipment	Unrestricted	1,959	1,000
	Software	Unrestricted	404	200
	Sensys Gradiometer Array	Unrestricted	32,432	19,000
	Trimble R8s GPS base & Rover	Unrestricted	18,752	11,000
			-	-
B5 Liabilities	Details	Fund to which liability relates	Amount due (optional)	When due (optional)
			-	
			-	
			-	
			-	
Signed by one or two trustees on behalf of all the trustees	Signature	Print Name	Date of approval	
		Michael Stuart Haken	30/08/2022	

ROMAN ROADS RESEARCH ASSOCIATION

England & Wales - Charity number 1163854

Accounts



Trustees' Annual Report for the period

From 1st November 2019 To 31st October 2020

Charity name: Roman Roads Research Association

Charity registration number: 1163854

Objectives and Activities

	SORP reference	
Summary of the purposes of the charity as set out in its governing document	Para 1.17	To advance the education of the public in general about the Roman road network in Britain and promote the study of Roman roads and Roman heritage more generally, in particular but not exclusively by (1) carrying out research into the course and construction of individual Roman roads. (2) promoting the study of roman roads and associated sites by community groups and organisations. (3) presenting talks, lectures and displays to schools and community groups (4) publishing the results of research and excavation.
Summary of the main activities in relation to those purposes for the public benefit, in particular, the activities, projects or services identified in the accounts.	Para 1.17 and 1.19	(1) A series of archaeological excavations. These will be held either on Roman roads themselves, or at Roman period sites alongside a Roman road. Sites will be carefully selected so that they not only answer important archaeological questions, but also have the potential to attract interest from the community, particularly from those with no previous experience of archaeology. The reports will all be made publicly available both online, and directly to the community. (2) A major programme of geophysical survey, using our recently purchased gradiometer array. Geophysical survey is a non-invasive method which can reveal features that may survive unseen beneath the ground surface. The first phase of this programme has been designed to look specifically at how the road network and associated Roman military sites developed in the early years of conquest in a 80 mile long corridor from just south of Doncaster reaching to Scotch Corner and beyond. We aim to use the experience gained during this first phase as a model to roll

		<p>out similar work in other parts of the country. Our aim, as always, is to encourage as much involvement as possible within local communities, both in learning from the results of the surveys, as well as getting involved in the surveys themselves, where they will receive full training. As with excavation, results will be made publicly available online.</p> <p>(3) We are developing a unique online database, with an interactive public interface, to provide an up to date and comprehensive picture of the Roman road network in Britain. Crucial to this is the collation of existing data, alongside further research, which is currently being conducted nationwide by a group of trained volunteers, each working in their local area</p>
Statement confirming whether the trustees have had regard to the guidance issued by the Charity Commission on public benefit	Para 1.18	<p>Having considered the guidance on public benefit issued by the Charity Commission, the trustees take the view that it is not only important that the results of our activities have public benefit, but that the activities themselves should do so. To this end, it is our policy that whilst our activities may be designed to increase public awareness and knowledge, whilst being professionally led the bulk of the actual work should be carried out by volunteers, with a focus on local communities, not just our own membership. To this end, we have created three main projects to develop over the coming few years.</p>

Additional information (optional)

You may choose to include further statements where relevant about:

	SORP reference	
Policy on grant making	Para 1.38	
Policy on social investment including program related investment	Para 1.38	
Contribution made by volunteers	Para 1.38	
Other		

--	--	--

Achievements and Performance

	SORP reference	
Summary of the main achievements of the charity, identifying the difference the charity's work has made to the circumstances of its beneficiaries and any wider benefits to society as a whole.	Para 1.20	<p>Activities in the field during 2019/20 were severely curtailed due to Covid 19 restrictions.</p> <p>Whilst no excavation was possible, geophysical survey has continued. Work continued on sites along the main south to north road corridor in Yorkshire, with further work at Burghwallis (S. Yorks) which successfully identified the western edge of a previously unknown extra-mural settlement. In March 2020, just before lockdown, we completed a fieldwalking survey on the small surviving portion of the settlement, recovering 21kg of Roman pottery, and one Roman coin. It had been hoped to organise a community event to allow local people to get involved with the recording and identification of the pottery sherds, but this has had to be postponed until late 2021. Further geophysical survey was conducted at the Roman fort at Roecliffe (N. Yorkshire), a previously uninvestigated site near Burton Leonard (N. Yorks), and on land on Roman road 280 (Rudgate) near Toulston, work which identified a previously unknown Roman road.</p> <p>2020 saw the launch an exciting major project, "Living Beyond the Town – Petuaria". This project aims to examine the hinterland of the Roman town of Petuaria, now Brough on Humber, using geophysical survey to try to understand the Roman period landscape around the Roman town, all survey work to be conducted by volunteers. This ambitious project aims to complete 400Ha of survey by 2024. A group of eleven volunteers have received training during September 2020 observing Covid restrictions, and the first survey was commenced.</p> <p>The decision was taken in March 2020 to begin work on our own peer-reviewed journal, Itinera, to be launched in spring 2021. Unusually, the decision was made to undertake all editorial, design and typesetting work ourselves, using volunteers drawn from our own membership, rather than employing a major publishing house. An editorial committee, and a board of</p>

		<p>technical advisors, have been formed, and the preparation of the first volume was well under way by the end of October 2020.</p> <p>As a major part of our aim to increase membership, the association has appointed a Social Media officer, and largely as a result of this our membership has grown rapidly during the year from just 112 to 240. We hope to make similar gains in the next twelve months.</p>
--	--	---

Additional information (optional)

You may choose to include further statements where relevant about:

Achievements against objectives set	Para 1.41	
Performance of fundraising activities against objectives set	Para 1.41	
Investment performance against objectives	Para 1.41	
Other		

Financial Review

Review of the charity's financial position at the end of the period	Para 1.21	Cash funds at the year end have increased slightly by £679 to £7688
Statement explaining the policy for holding reserves stating why they are held	Para 1.22	It is our revised policy to aim build sufficient funds so as to have reserves large enough at any one time to fund our scheduled activities over the following twelve months, with an amount of at least 50% of expenditure maintained in our current account. It is expected that this may take until 2023 to achieve.
Amount of reserves held	Para 1.22	Zero
Reasons for holding zero reserves	Para 1.22	Over the current year, our income has been slightly greater than expenditure, however the balance in our current account remain only slightly over half anticipated expenditure and not yet sufficient to begin to establish reserves.
Details of fund materially in deficit	Para 1.24	None
Explanation of any uncertainties about the charity continuing as a going concern	Para 1.23	None currently, although for long term security we do need to raise sufficient funds to establish the reserves as outlined above.

Additional information (optional)

You may choose to include further statements where relevant about:

The charity's principal sources of funds (including any fundraising)	Para 1.47	Membership subscriptions and private donations.
Investment policy and objectives including any social investment policy adopted	Para 1.46	
A description of the principal risks facing the charity	Para 1.46	
Other		

Structure, Governance and Management

Description of charity's trusts:		None
Type of governing document (trust deed, royal charter)	Para 1.25	Constitution
How is the charity constituted? (e.g unincorporated association, CIO)	Para 1.25	CIO
Trustee selection methods including details of any constitutional provisions e.g. election to post or name of any person or body entitled to appoint one or more trustees	Para 1.25	Elected by membership

Additional information (optional)

You may choose to include further statements where relevant about:

Policies and procedures adopted for the induction and training of trustees	Para 1.51	
The charity's organisational structure and any wider network with which the charity works	Para 1.51	
Relationship with any related parties	Para 1.51	
Other		

Reference and Administrative details

Charity name	Roman Roads Research Association
Other name the charity uses	
Registered charity number	1163854
Charity's principal address	Ellerbeck Cottage, Ellerbeck, Northallerton, North Yorkshire, DL6 2RY

Names of the charity trustees who manage the charity

	Trustee name	Office (if any)	Dates acted if not for whole year	Name of person (or body) entitled to appoint trustee (if any)
1	Michael S Haken	Chairman		
2				
3				
4				
5				
6				
7				
8				
9				
10				
11				
12				
13				
14				
15				
16				
17				
18				
19				
20				

Corporate trustees – names of the directors at the date the report was approved

Director name		

Name of trustees holding title to property belonging to the charity

Trustee name	Dates acted if not for whole year	

Funds held as custodian trustees on behalf of others

Description of the assets held in this capacity	NONE
Name and objects of the charity on whose behalf the assets are held and how this falls within the custodian charity's objects	
Details of arrangements for safe custody and segregation of such assets from the charity's own assets	

Additional information (optional)

Names and addresses of advisers (Optional information)

Type of adviser	Name	Address

Name of chief executive or names of senior staff members (Optional information)

--

Exemptions from disclosure

Reason for non-disclosure of key personnel details

--

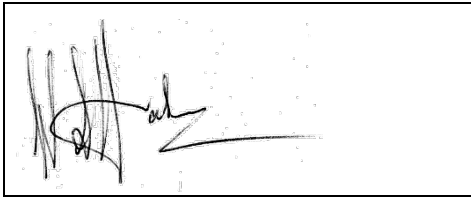
Other optional information

--

Declarations

The trustees declare that they have approved the trustees' report above.

Signed on behalf of the charity's trustees

Signature(s)		
Full name(s)	Michael Stuart Haken	
Position (eg Secretary, Chair, etc)	Chair	
Date	30 August 2021	



CHARITY COMMISSION
FOR ENGLAND AND WALES

Roman Roads Research Association

1163854

Receipts and payments accounts

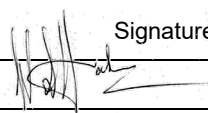
CC16a

For the period from	01-Nov-19	To	31-Oct-20
------------------------	-----------	----	-----------

Section A Receipts and payments

	Unrestricted funds to the nearest £	Restricted funds to the nearest £	Endowment funds to the nearest £	Total funds to the nearest £	Last year to the nearest £
A1 Receipts					
Subscriptions	4,298	-	-	4,298	-
Donations	8,043	-	-	8,043	-
	-	-	-	-	-
	-	-	-	-	-
	-	-	-	-	-
	-	-	-	-	-
Sub total (Gross income for AR)	12,341	-	-	12,341	-
A2 Asset and investment sales, (see table).					
	-	-	-	-	-
	-	-	-	-	-
Sub total	-	-	-	-	-
Total receipts	12,341	-	-	12,341	-
A3 Payments					
Professional archaeological services	10,391	-	-	10,391	-
Printing & Stationery	37	-	-	37	-
Internet fees	463	-	-	463	-
Software	82	-	-	82	-
Paypal Fees	78	-	-	78	-
Miscellaneous expenses	11	-	-	11	-
	-	-	-	-	-
	-	-	-	-	-
Sub total	11,062	-	-	11,062	-
A4 Asset and investment purchases. (see table)					
Excavation & Geophysics Equipment	601	-	-	601	-
	-	-	-	-	-
Sub total	601	-	-	601	-
Total payments	11,663	-	-	11,663	-
Net of receipts/(payments)	679	-	-	679	-
A5 Transfers between funds	-	-	-	-	-
A6 Cash funds last year end	7,009	-	-	7,009	-
Cash funds this year end	7,688	-	-	7,688	-

Section B Statement of assets and liabilities at the end of the period

Categories	Details	Unrestricted funds to nearest £	Restricted funds to nearest £	Endowment funds to nearest £
B1 Cash funds	Natwest Current Account	5,059	-	-
	Paypal Balance	2,629	-	-
		-	-	-
	Total cash funds	7,688	-	-
	(agree balances with receipts and payments account(s))	OK	OK	OK
B2 Other monetary assets	Details	Unrestricted funds to nearest £	Restricted funds to nearest £	Endowment funds to nearest £
		-	-	-
		-	-	-
		-	-	-
		-	-	-
		-	-	-
B3 Investment assets	Details	Fund to which asset belongs	Cost (optional)	Current value (optional)
			-	-
			-	-
			-	-
			-	-
B4 Assets retained for the charity's own use	Details	Fund to which asset belongs	Cost (optional)	Current value (optional)
	Projector, Screen & AV	Unrestricted	850	500
	Excavation Tools & Equipment	Unrestricted	1,715	900
	Software	Unrestricted	404	200
	Sensys Gradiometer Array	Unrestricted	32,432	24,000
	Trimble R8s GPS base & Rover	Unrestricted	18,752	13,000
			-	-
			-	-
B5 Liabilities	Details	Fund to which liability relates	Amount due (optional)	When due (optional)
			-	
			-	
			-	
			-	
Signed by one or two trustees on behalf of all the trustees	Signature	Print Name	Date of approval	
		Michael Stuart Haken	30/08/2021	