



**South West
Coast Path
ASSOCIATION**

South West Coast Path Association

Trustees' Report and Financial Statements
for the year ended 31 December 2023



Registered with
**FUNDRAISING
REGULATOR**

Reg. charity no. 1163422

Contents

Reference and administrative details of the charity, its trustees and advisers	1
Trustees' report	2
Independent examiner's report	36
Statement of financial activities	38
Balance sheet	39
Notes to the financial statements	41

Cover image Sharon and Sue. Photo below:

Report independently examined by:



Reference and Administrative Details of the Charity, its Trustees and Advisers

For The Year Ended 31 December 2023

Trustees

Ruth Adams, (Co-opted November 2023)
Katie Ash
Ken Carter,
Lucy Daniel (Resigned August 2023)
Hilary Dinsdale, *Treasurer to June 2023*
Graham Keene (Resigned June 2023)
Zoë Kibbey (Co-opted November 2023)
Robert Mark, *Chair*
David Morris
Phillip Spencer, *Vice Chair*
Kevin Thomas, *Treasurer from June 2023*

**Charity registered
number**

1163422

Principal office

Unit 11, Residence 2, Royal William Yard, Plymouth, PL1 3RP

Senior management team

Julian Gray, Director
Lorna Sherriff, National Trail Officer
Aletha Mays, Head of Comms

Accountants

Bishop Fleming LLP, Chartered Accountants,
Salt Quay House, 4 North East Quay, Sutton Harbour,
Plymouth, PL4 0BN

Trailblazer Walk Finale. Photographer Jay Stone



Chair's Introduction

It is a pleasure on behalf of the Board of Trustees to introduce the 2023 Annual Report, which records the exceptional contribution of Association Staff, Volunteers, Members, and Supporters to deliver a cracking 50th Anniversary year, which we think would delight our founders. In addition to the 50th celebrations detailed in this report, immense credit is due to the efforts of the staff and volunteer team to deliver a very creditable financial performance.



Working with our South West Trail Partnership Program colleagues, £1.219 million has been spent in 2023 on the Path, to maintain and improve the experience of walkers. Of this 47.7% has been grant funded by Natural England as part of the agreement between Central Government and the Trail Partnership, and 52.3% match-funded by the SW Trail Partners, including the Association. This achievement is all the more creditable in a period of high inflation and challenging economic circumstances, given that the SW Trail Partnership Agreement with Central Government should reflect a 75% Central Government: 25% Trail Partnership split.

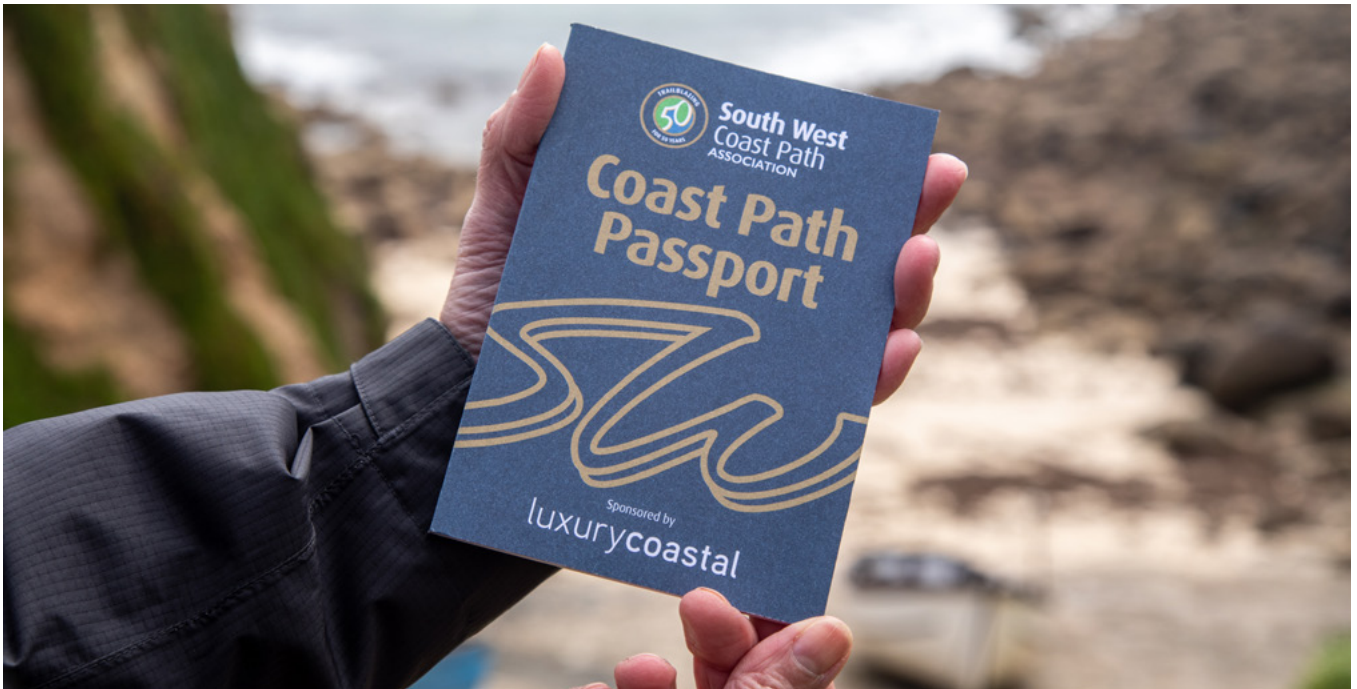
THREE ASPECTS HAVE DRIVEN THE AMBITION OF TRAIL PARTNERS TO FIND MORE MONEY TO MAINTAIN AND IMPROVE THE SWCP AS A NATIONAL JEWEL.

The increasing impact of climate change on the fabric of the path, the clear and demonstrable draw which the path has to encourage visitors to spend of the order of £500m per annum, supporting around 10,000 jobs in a region

which depends on tourism as a key component of the local economy; and finally the health and wellbeing benefits which locals and visitors alike can gain from this wonderful resource.

The Trustees are particularly pleased that the Association's National Lottery Heritage funded Coast Path Connectors (CPC) programme, has had a very successful inaugural year. The NLHF money has enabled the Association to employ 5 additional part-time staff to turbo-charge our Health and Wellbeing offering across the region, improving the access to the physical and mental benefits of walking the Path for a wide range of less advantaged folk who might otherwise have lacked the confidence or opportunity. NLHF funding is for two years, expiring in May 2025, and the Trustees, based on this pilot, are keen to find ways of continuing the programme. I encourage you to read the range of 'connections' that CPC has been able to deliver in the following pages and the heart-warming quote of a beneficiary.

None of the above good work could be achieved without you, the members and supporters.



We have received £135K from a steadily growing membership base this year, which is a marvellous testament to the loyalty and desire of individual members to give something back to the path and preserve it for future generations. Fifty percent of subscriptions are hypothecated into a restricted fund to promote and protect the Path. Together with donations of £115K, fully 28% of the Association's income derives from individuals who care passionately about the path. Legacy pledges are above £500K.

OVER 450 BUSINESSES ARE PART OF THE ASSOCIATION'S 'WAY MAKER' SCHEME AND THE NEW 'SWCP PASSPORT' IS AN UNDOUBTED SUCCESS, WITH MORE STAMPING POINTS ADDING TO THE POPULARITY AND ENABLING PARTICIPATING BUSINESSES TO TAP INTO OUR GROWING PASSPORT USER BASE.

We have enhanced our website, which retains a #1 spot on google search rankings and are working hard to add new

functionality as funds allow. Across all social and traditional media channels we are now talking to upwards of 136,000 people, providing regular updates on path condition, events, news, Way Maker facilities, and special interest topics. So a heartfelt thank you to all our members and supporters.

It would be easy to rest on our laurels, however there is little doubt that the Association cannot relax the tempo of fund-raising activity. Better promotion means more people and more erosion in 'hotspots' although there are still plenty of places where the path offers calm, peace, and tranquillity. Climate Change is forcing the pace of coastal adaptation, and our annual Storm Damage Appeal is becoming more and more essential. A less obvious effect of Climate Change is the impact on our native species. The Association is committed to lobbying with partners to create a coastal wildbelt or corridor for nature and people around the path to give nature space to adapt and recover.

In 2023 we continued our support to the South Devon Landscape Partnership (formerly the S Devon Area of Outstanding Natural Beauty) 'Life on the Edge' pilot programme, which we hope will offer lessons to other Landscape Partnerships in the region.

Unfortunately, the Path is also increasingly subject to unsuitable development, in 2023 the reasoned and carefully framed representations of the Association to the Planning Authorities were up 60% on 2022. Our goal is to promote compromise where-ever possible, however we will not shirk our duty to preserve the natural beauty of the Path. Notwithstanding these challenges, in 2023 the 'good' has most definitely overshadowed the 'bad'. The Association and Path are in good shape. On behalf of, the Board of Trustees and Staff, I hope you will continue to ensure that the SWCP remains one of the World's great trails.

Objectives and activities

The **Objects** of the Charity, as set out in the Constitution, are:

- 1 To secure the protection, improvement and conservation of the South West Coast Path and public access to it in order to improve the health and wellbeing of the general public.
- 2 To educate the general public to a greater knowledge of, respect and care for, the coast and countryside by promoting the South West Coast Path.

In furtherance of these Objects the Association aims to work for and assist in:

- Providing information about the South West Coast Path and its corridor to the public;
- The effective administration of the organisation directed at the improvement and maintenance of the South West Coast Path; and
- Providing a forum in which different interests connected with the South West Coast Path (including its corridor) and its use can discuss problems of mutual concern.

Vision and Mission

The Association's **Vision** is to protect and improve the South West Coast Path as one of the world's great trails, now and for future generations. In our **mission** to achieve this, we will champion the South West Coast Path to help people access, enjoy and protect the National Trail.

Our Strategies

As a charity we need to be self-sufficient in our core running costs. We also need to ensure efficient use of our supporters' donations so that the maximum benefit is given to the Coast Path. To be as cost-effective in our efforts as possible, our strategies focus on working in partnership where practicable. Our business plan prioritises the following strategies:

Enhancement of the South West Coast Path National Trail

- Improve quality of access to and along the Trail and enhance health and wellbeing
- Seize opportunities to improve the green infrastructure of the coastal margin
- Support and coordinate the Trail Partnership
- Have a voice in the planning system to protect and enhance the Trail

- Support economic activity that sustains the Trail
- Advocate at a national level to support the family of National Trails
- Work at a regional level to support wider access to the coast and countryside

Engagement with people using and supporting the Coast Path

- Listen and give a voice to users of the Coast Path
- Engage with people about conservation of the coast and countryside – helping create a sense of place
- Inspire people to use and enjoy the Coast Path, promoting access for all

Capacity Building of the Association and SWCP Trails Partnership to support the Trail

- Fundraise to help protect, promote and improve the Path
- Provide a way for people to give back to the South West Coast Path
- Enable others to support the Path to do more through leveraging of funding
- Be bold to test new ideas to enhance the trail experience



*Provide a way for people to give back
to the South West Coast Path.*

Hartland Quay to Bude, Trailbalzer Walk. Photographer Julian Gray

Reporting Criteria 2023

The charity's Business Plan sets out financial and non-financial performance measures to ensure the Association is meeting its objects, vision and mission. A new five-year Business Plan was developed between June and October 2022 and adopted by the Board of Trustees in November 2022 setting out the strategic aims and objectives for the Association including a detailed action plan and budget for 2023.

The three Sub-Committees of the Board of Trustees have responsibility for governance and oversight of delivery of one of each of the three strategic aims:

- **Path Committee** – enhancement of the Coast Path experience;
- **Membership and Fundraising Committee** – fundraising to support the Coast Path; and
- **Finance and Human Resources Committee** – running the Charity.

This 2023 Trustees Report has been structured to reflect the charity's work across these three areas.

South West Coast Path Photographer of the Year winning image. Seagull at Sea, Exmouth South Devon. Photographer Paul Boomsma





*Sunset on the ammonite pavement at Lyme Regis,
Jurassic Coast. Photographer James Loveridge*

Main Activities Undertaken to Further the Charity's Purposes for Public Benefit

Enhancement of the Coast Path Experience

This year marked the 50th anniversary of the charity. Over the year we undertook a series of activities and events to celebrate the South West Coast Path.



Start of the Trailblazer Walk in Minehead

Highlights of the celebrations include:

- Over 1,000 people joined us on our epic **Trailblazer Walk**, covering the full 630 miles of the South West Coast Path over 35 days. The epic walk finished on the Green at Royal William Yard on June 15th and was followed by the AGM and Coast Path Forum as part of a further two days of celebrations in Plymouth. 500 **Beach of Dreams** silk pennants were on display to create the 50th Trailblazing logo in a stunning installation from both an aerial and ground-level perspective. 100 lucky Trailblazer Walkers
- completed the installation in a ceremonial procession into the Yard with celebrations overseen by David Fursdon, Lord Lieutenant of Devon.
- The 2023 AGM was held in person with around 100 members joining us at Royal William Yard. Bob Mark, Chair, gave an overview of the work of the charity and future plans and Hilary Dinsdale, outgoing Treasurer, presented a report on our accounts for 2022. This was followed by a 50th anniversary cake cutting ceremony overseen by Bob Mark and former Trustee Lizzy Wallace who with her husband were key personalities in building the Charity from scratch in the early years. The AGM was concluded with a completer's certificate ceremony overseen by Philip Spencer, Vice-Chair.
- The 2023 **Coast Path Forum** was attended by over 100 members supporters and wider stakeholders on June 16th. Whereas the rest of the 50th-anniversary celebrations focus on the last 50 years, the Forum was used as an opportunity for us to look forward to the next 50 years of the Coast Path. Specifically, what challenges and opportunities lie ahead for the National Trail.



TRAILS·FILM
world trails film festival

RWY PLYMOUTH 15-17 JUNE 2023

THURSDAY 16:00-18:00
CAROLINE AND THE PATH TO RECOVERY **UK**
OUT OF EDEN WALK IN CHINA **CHINA**
RESA | A 600KM JOURNEY BY KAYAK **SWEDEN**
CONFESSIONS OF A RUNNER **LEBANON**
THE FORGIVING PATH **UK**
WHY WE WALK **USA**

FRIDAY 16:30-18:30
MILES TO GO **USA**
GOAL ZERO POWER MOVES **USA**
THE BEACH OF DREAMS **UK**
BREAK THE RECORD, BREAK THE STIGMA **USA**
DANCE WITH ROCKS **TAIWAN**
THE PRIVILEGE OF MOVEMENT **SOUTH AFRICA**
THE LAST LAST HIKE **USA**

SATURDAY 13:00-15:00
THIS IS NOT A BEAUTIFUL HIKING VIDEO **USA**
TAMSUI-KAVANAL TRAILS TRILOGY **TAIWAN**
LIVING ON THE EDGE **UK**
STONEMAN DOLOMITI TRAIL **ITALY**
DON'T THINK ABOUT TOMORROW **FRANCE**
SEASONS ON THE KYOTO TRAIL **JAPAN**

Tickets free or donation to
South West Coast Path Association
Booking essential:
bit.ly/worldtrailsfilmfestival

PRESENTED BY
South West Coast Path Association

VISIT SOUTHWESTCOASTPATH.ORG.UK
FOLLOW [@SOUTHWESTCOASTPATH](https://www.instagram.com/southwestcoastpath)

Royal William Yard



South West Coast Path
Photographer of the Year 2022 Exhibition



South West Coast Path Association

Noss Mayo | South Devon | Jon Lovejoy

Ocean Studios, Royal William Yard, Plymouth 15 June - 27 July 2023

Series 1 Episode 4 630 MILES An Audio Journey
Inspired by the Coast
Featuring:
• Kurt Jackson
• Peter Knight
• Emma Scattergood

Series 1 Episode 12 630 MILES An Audio Journey
Raynor Winn
The Salt Path
The Wild Silence
Landlines

A series of short presentations from speakers covering different aspects of the Coast Path - equity of access, climate change, nature recovery, regenerative tourism, community engagement and coastal Wildbelt - was followed by a panel Q&A session chaired by Sarah Mukherjee MBE.

- The inaugural **South West Coast Path Photographer of the Year** exhibition showcased 23 images at Ocean Studios, Royal William Yard, running from June to August.
- We launched our first ever podcast series, **630 Miles – an Audio Journey**, hosted by volunteer Rachel Hadley-Leonard. The 12-episode series has been streamed in 23 countries with an incredible 62 guests interviewed on a range of topics, over a grand total of 480 minutes!
- We hosted the **World Trails Film Festival** at Royal William Yard as part of our 50th celebrations in June with 20 films from 10 countries covering four continents over 3 days.
- Fifteen **Coast Path Friendly Events** took place on the Trail during 2023, putting money back into Path maintenance and improvements.
- Our **Coast Path Challenge** and Community Fundraising activities raised over £15k to support our work.
- We launched a 50th anniversary commemorative edition of the **Coast Path Passport**. We also welcomed 40 new South west Coast Path Passport stamping points taking the number of places to get your passport stamped to 141.
- Last, but by no means least, local rep, Chair of the Path Committee, and previous Trustee Steve Church was honoured with a **Coronation Champion Award** in recognition of his many years of voluntary work at the Association.



Coronation Champion Steve Church





Churston Cove Step improvement with Macs Adventure step



Kynance Access for all path improvement



South Milton Sands Accessible Boardwalk Platform. Credit National Trust

Path Improvement Projects:

The charity's Path Committee supported 14 improvement projects along the Coast path that were completed in 2023, including:

- **£4.3K** for Churston Cove project in Torbay. 32 new steps, 6 replacement steps, 1 new wooden ladder x 17 steps, 2 new stringers, 1 new revetment, 1 new handrail & tonnes of sand & crushed stone were installed for this improvement project. The project was also extended to complete works on the on the concrete steps to enable easier access. This was a great partnership project between SWCPA, Torbay Coast and Countryside Trust and SWIScO, the infra-structure company owned by Torbay Council.
- **£6.4K** for Kynance Cove Access for all route supported by one of our sponsors Athletic Brewing Two for the Trails funding. This improvement project has opened up a section of coast path to different user groups by improving surfacing, drainage and removing obstacles on approximately ½ a mile of very heavily used coast path to enable wheelchair and Trampler access. This project was designed with the support of the National Trust, SWCPA, Natural England and

Cornwall Rolling Ramblers.

- **£770** for Tinsey Head Gateway Improvements – South Devon. The project replaced three old gateways and renewed with hardwearing oak or chestnut gates. This is a well-used section of coast path which is often grazed by livestock so these improvements will allow easier access for people as well as improving the management of the livestock.
- **£8.3K** for Carnsew Pool Path Re-establishment. This project was in partnership with the RSPB and repaired and stabilised the footpath and seawall which had been rapidly eroding to a point where it was no longer safe to walk.
- **£3K** for South Milton Beach Accessibility Boardwalk which replaced the existing boardwalk from the main car park at South Milton Sands beach with an access for all compatible boardwalk and wheelchair seating area. This new facility enables access to the beach for many different user groups, and the addition of a platform (which can be removed if bad storms are predicted) allows people with limited mobility the opportunity to sit on the platform on the beach. (£1K kindly donated towards the Project from Totnes Ramblers).

- **£1.8K** for Scabbacombe South Slope improvement – South Devon – was very steep and, when wet, very difficult to traverse safely. The worn path was adjacent to a landowner's stock fence which was being pulled over by walkers clinging on to it to keep their balance. This improvement project implemented with the South Devon National Trust, installed a zig-zag path, digging into the slope to create a more gently sloping path with minimal cross gradient.
- **£2K** for Beesands path surfacing improvements as this section of path had been badly damaged by water run-off. Having already installed a water diversion gully at the top end of this eroded section the trail was regraded, levelled and surfaced.
- **£5.8K** Nanjulian bridge - West Cornwall National Trust. The project installed 2 new granite bridges to replace the existing end of life wooden bridges. The new bridges consist of 3 granite slabs resting on a granite bearer either end and supported in the middle by two further granite supports.
- **£4.9K** for step boards through the Step-Up Appeal across the trail.

- **£11.5K** for Waymarkers and fingerposts across the trail area through the Find Your Way Appeal.

In addition, the Path Committee allocated a further £9.5k towards 3 improvement projects which were agreed in 2022 but due to be completed in the first quarter of 2023.

We continued our support for the South Devon National Landscapes Life on the Edge project which has been successful in its bid to the National Lottery Heritage Fund for a five-year delivery phase. This project will help restore habitat along the coastal margin for recovery of specific keystone insect species. Our support is specifically targeted to deliver improved public access and appropriate public information.

This year saw a new grant from Natural England providing an additional £82K funding going towards capital access works. This funding is part of access funding investing in access/ accessibility improvement across National Parks, National Landscapes and National Trails. We asked all the Trails Partners to submit projects the funding could be used for and received seven project proposals, five in Cornwall one in Exmoor and another in Devon. This is a very welcome uplift in funds for capital accessibility projects.

However, this new funding does not address the financial pressures on the maintenance costs of the partners. The charity will continue to champion for an increase in core maintenance budget to ensure the Coast Path remains to the high-quality standard expected of a National Trail.

At the end of 2023 we were also successful in acquiring £173k additional funding from Natural England for capital improvement works. This will fund 50 projects across the trail which will be completed by the end of March 2024.

Managing Impacts of Climate Change

With the Trail running around the edge of the SW peninsular we are impacted by storms no matter the direction they come from. One impact of climate change is that not only are we seeing more frequent and stronger storms, but also more extreme weather events. So, the threat to the Coast Path corridor is not only the acceleration of coastal erosion, but also wind damage, run-off from significant rainfall events and increased fire risk during heatwaves.

Over the year there were 17 coastal erosion incidents leading to diversions and roll back of the path.

There were also numerous smaller cliff-slips where sections of the Trail now need to be regularly monitored and plans put in place ready to divert or roll back the path before it is deemed no longer safe. Many events were cliff falls, landslips, or collapses of key infrastructure such as steps or bridges caused by heavy rain fall, flooding, or storm surges. In the last two years the trail has also experienced five significant wildfires which caused temporary closures to sections of the trail and caused destruction of the unique and fragile coastal habitats.

*West Bay, Jurassic Coast.
Photographer James Loveridge*



Path Survey and Condition Report

Path Survey and Condition Report
Between October 2022 and March 2023 94% of the National Trail was surveyed. Path volunteers walked the Trail recording observations on hand-held tablets against National Trail Quality Standards, following the same methodology of previous surveys.

Based on the analysis of data collected between October 2022 and March 2023, we have seen the condition for furniture and signs decline by 0.3%

over the year. This slight decline could be due to the levelling out of the results now that we are able to complete a higher percentage of surveys due to reduced Covid restrictions. It could also be due to the squeeze of local authorities' budgets as we are seeing more and more of our trails partners budgets remaining the same or in some cases seeing a reduction in their budget. The results of the survey are summarised in the graph below:

Table 1: The percentage of Coast Path infrastructure meeting National Trail Quality Standards 2001 to 2023:

Criteria	2001	2005	2009	2012	2016	2017	2018	2019	2020	2021	2022	2023
Furniture	73%	81%	86%	89%	86%	85%	85%	85%	84%	80%	87%	84%
Signs	46%	58%	69%	79%	74%	73%	72%	76%	75%	69%	74%	75%
All infrastructure	62%	71%	78%	84%	81%	80%	79%	81%	80%	75%	80%	80%

Path Completers

119 members requested completer certificates over 2023, a 30% rise and the highest number recorded. In contrast, non-member completer

certificate purchases dropped to the lowest number since 2018. In addition, 44 walkers requested Coast Path section completion certificates.

Table 2: Walkers of the Coast Path requesting a completers certificate 2016 to 2023.

Completers	2016	2017	2018	2019	2020	2021	2022	2023
Members	90	97	91	101	73	90	90	119
Non members	75	95	150	151	112	179	187	101

South West Coast Path Trail Partnership

The Trail Partnership oversees the management, maintenance, improvement, and promotion of the South West Coast Path National Trail for the benefit of the public. It champions the protection, enhancement and access to the landscape, biodiversity and cultural heritage of the Coast Path corridor. The Delivery Group comprises six Highway Authorities (Cornwall and Dorset Councils, Devon County Councils, Torbay Council, Plymouth City Council and Exmoor National Park Authority), the National Trust, Natural England (NE) and the SWCP Association with Ken Carter the independent Chair. As set out in A New Deal for National Trails, Natural England provides an annual grant to the SWCP Trail Partnership to help maintain the Coast Path to the higher quality National Trail standards. This grant funds a maximum of 75% of the day to-day maintenance of the National Trail, paid directly to the Highways Authorities, who, with the National Trust fund the remaining 25% (because of the pressures noted in the climate change section above, this proportion has risen from 25% to 50% with increasing costs and liabilities). The 2023/24 NE grant settlement was £441k plus an additional £82k for capital access works. The grant allocation is set out in a Delivery

Framework and based on percentage of path within each jurisdiction.

Table 3: Percentage allocation of Natural England grant allocated towards maintenance by Highway Authority area:

Highway Authority	Proportion of grant
Cornwall	48%
Devon	30%
Dorset	12%
Exmoor	5%
Plymouth	1%
Torbay	4%

A proportion of the NE grant is used to fund regional co-ordination work on behalf of the Partnership by the National Trail Team including the National Trail Officer and is managed by the Association. The SWCP Trails Partnership delivery group met twice over 2023. The main topics considered included: establishment of the King Charles III England Coast Path; mitigation of climate change impacts; development of a Coastal Wildbelt to promote nature recovery; and managing planning issues along the National Trail corridor. The Partnership agreed to continue to invest in the SWCP Trails

Partnership Project (TPP) for a further three years. The TPP helps build capacity of the charity to generate extra investment in the Coast Path.

For the last three years the Partnership invested £145K into the TPP. This was used by the charity to co-ordinate grant applications, engage with business and supporters to fundraising almost £2m for the National Trail. In the 2022/23 Financial year the total cost spent on the trail was £1.22million with £637K as grant funding from Natural England and £582K match funding from the trail partners and the Association. These figures show that the trails partnership are funding 48% of the trail maintenance costs, which is above the 25% match they should put in for a National Trail.

In 2023 the TPP priorities included: championing a stronger voice for the wider family of National Trails to help secure government funding and wider support; protecting the 2023/24 core maintenance grant and securing additional access funding; and securing match funding for improvement projects to maximise the impact of the maintenance grant. Table four below shows the annual investment by the partners in the Trails Partnership Project for 2022.

Table 4: Annual breakdown of investment into the Trail Partnership Project by the SWCP Trails Partnership.

Trail Partnership Project investment 2022/23	
Cornwall Council	£9,248
Devon County Council	£5,688
Dorset Council	£3,087
Exmoor National Park Authority	£1,036
National Trust	£15,000
Plymouth City Council	£320
South West Coast Path Association	£15,000
Torbay Council	£621
Total	£50,000

Improving Equity of Access

In addition to the work of the Coast Path Connectors Team and our Health and Wellbeing Working Group We have published 19 Access Guides on the website. These give more detailed information about walks on the Coast Path with the aim of providing as much

access information as possible so that people can make an informed decision about which walks are suitable for them. This includes information about the terrain and photographs of what to expect. More information on: southwestcoastpath/easy-access

Kynance Easy Access route



Coast Path Connectors

Thanks to funding from National Lottery Heritage Fund, we launched our 2-year Coast Path Connectors Project in 2023. Employing 5 new part-time Project Officers based on the Path in West Cornwall, Plymouth, Torbay, north Devon and Dorset, the project aimed to open up coastal walking to new audiences, and to train up new volunteers to carry on this work. The project was informed by our previous outreach work such as Connecting Actively to Nature (CAN), and our Plymouth walks with Devon and Cornwall Refugee Support (DCRS), and Improving Lives Plymouth (ILP).

The Project Officers were recruited in a phased manner with the Plymouth Officer starting in December 2022 and all five project officer positions filled by June 2023. The project aims to boost health and wellbeing of participants, as well as introducing them to the heritage and natural environment of the Coast Path with the hope that people will continue to walk as groups and independently in the future.

Key outputs of the project in 2023 include:

- Developed walking programmes with 16 community groups
- Walked with over 1,400 participants on the Coast Path

- Worked with local social prescribers and other health professionals in developing supported walks
- Engaged with over 40 new volunteers
- Over 1,000 volunteer hours given back in a variety of roles (walk supporter, walk leader, photography)
- Trained over 20 volunteers and support organisation staff in walk leading skills

Examples of groups we have worked with in 2023:

- **Plymouth:** Devon and Cornwall Refugee Support (DCRS); University of Plymouth wellbeing group; Plympton Plodders (ILP over 60s project); Sensory Solutions (IPL project); Livewell (supporting children with additional needs); and Timebank community.
- **Cornwall:** St. Petrocs (homeless charity); Newquay Orchard, NHS staff wellbeing team; Ocean Housing; Wheelchair rambles with Cornwall Rolling Ramblers, the Cove (cancer support); Falmouth Community centre; Promas CIC (supporting unpaid carers); and Refugees welcome group.
- **North Devon:** Encompass (supporting vulnerable people); Healing Steps (newly formed bereavement support walking group); and Ilfracombe Friendship and social group
- **Torbay:** NHS Myalgic Encephalomyelitis/Chronic Fatigue Syndrome support group, Brixham theatre volunteers, community walks with Melville area residents, Live Longer Better course participants.
- **Dorset:** Hope House (Women's project), Lantern Trust, the Loft community group in Swanage.

Quote from a participant:

“

The South West Coast Path Association's Coast Path Connectors walks has been invaluable to me in so many ways. Physically, walking with the group has enabled me to try to build up my strength after a cancer diagnosis meant chemotherapy treatment left me feeling weak and despondent. Psychologically, I've been able to push myself to get out and exercise (even in the depths of winter!). Finding that the walks are a gentle healing balm has been so uplifting, better than any medicine. There is no expectation to socialise, no pressure to mingle...these things just happen organically, in beautiful surroundings gently nurtured by nature. Knowing that safety is paramount and that the walks are carefully considered and planned means that I can relax and enjoy being out in the elements... "in the moment"...such a precious gift to bestow...I'm very grateful.

A Tuesday walker with the North Devon Group

”



Planning

The Association continues to make representations to the relevant Local Planning Authorities and other appropriate bodies whenever proposals or plans might have an adverse impact on the Coast Path and the experience of its users. In this role it is helped by its five volunteer planning advisors, who between them cover the whole 630 miles of the Coast Path.

We improved the notification of planning applications to the National Trail team and charity for some of the Coast Path and now over 50% of the Coast Path is covered. Specifically, Cornwall (via Ramblers), East Devon and South Hams (via National Landscape teams). We continue to work with partners to get complete coverage of the National Trail.

During 2023 the Association had sufficient concern to make representations on 25 planning applications a increase of almost 60% on 2022. Of these, 16 were formal objections to the development applications. One application was supported. Five applications were commented on but we made no objection. For the remaining three applications we kept the right to object subject to provision of further information.

In addition, the Association has made a representation on an appeal to the Planning Inspectorate regarding an improvement proposed by Natural England under the ECP procedure.

*Holywell Bay, North Cornwall.
Photographer Sally Lewis*



The charity commented on three Neighbourhood Plans over the year: Penzance and the parish of St Hilary in West Cornwall and Braunton in North Devon.

The charity also engaged with local authority partners on a possible loophole in the control of camping and caravanning sites in the countryside, including locations which could impact on the Coast Path.

King Charles III England Coast Path

In May Defra announced that England's longest National Trail was to be renamed the 'King Charles III England Coast Path' (KCIIECP) and that the route would be 'walkable'

by the end of 2024. Natural England continues to co-ordinate the designation of the KCIIECP National Trail. However, delays mean that the outstanding KCIIECP sections in the SW will now open from 2024. Establishment works for improvements or new sections of the route will be undertaken once sections are approved by the Secretary of State. Many sections of the KCIIECP in the SW are already in the planning or delivery phase of the establishment works. However there still remain two sections where the Secretary of State has yet to rule on Planning Inspector recommendations.

We received a further grant of £8.5k from Natural England to co-ordinate signage and interpretation along sections

of the ECP in Cornwall (building on planning work the Association undertook in 2021). Specifically, the work addresses wildlife disturbance issues as well as providing the most up-to-date information for route amendments. Information panels and plaques are being designed for estuary crossing locations to provide all options available, whether by ferry or showing the best route to walk around the estuary.

Natural England hosted three events to celebrate the ECP in the SW at Ilfracombe, Weymouth and Plymouth.



SWCPA team members Molly Palmer, Aletha Mays, Lorna Sherriff at the ECP event at Royal William Yard, Plymouth, September 2023

Fundraising to support the Coast Path

We received over £471k in funding from trusts and grants in 2023, which accounted for over 50% of our income for the year. This increase is partly from the National Heritage Lottery Fund support for the Coast Path Connectors project and partly from Natural England grant funding for access projects along the Coast Path. All grant and trust funds were restricted to specific projects, specifically: £237k to path improvements, £92k to the SWCP National Trail Team; £84k for Coast Path Connectors project; £41k to the SWCP Trails Partnership Project; volunteers and National Trails development; £11k to England Coast Path signage and interpretation; and £500 for the Connecting Actively with Nature programme (now completed).

Table 5: List of reportable Trusts and Grants received by the Charity during 2023:

Trusts	
John Coates Charitable Trust	£5,000
Grants	
Active Devon	£500
National Lottery Heritage Fund	£84,036
Natural England, England Coast Path Signage	£10,845
Natural England, Path Improvements	£227,604
Natural England, Team Grant	£92,150
SWCP Trail Partnership Project	£40,990

Association Membership

We received just over £135k from Membership in 2023, accounting for over 15% of the year's income. 50% of membership income is allocated to a restricted fund to protect and promote the Coast Path; amounting to over £67k in 2023. This helps show members that their support

is making a real difference on the ground. Membership income remained static between 2022 and 2023 which reflects the impact of the cost of the living crisis, see table 6 below:

Table 6: Membership income 2016 to 2023

Membership Income	2016	2017	2018	2019	2020	2021	2022	2023
Memberships	£76,384	£94,664	£96,267	£108,167	£114,660	£129,333	£135,897	£135,236

Donations

Over the year the charity received donations totalling £115k, accounting for just under 13% of our income. Individual donations and gift aid remained strong over the year. We saw a significant rise in Community and Events fundraising, recognising profile of 50th anniversary, including Ed Haddon's hike of the Path which raised £7.5k. Over the year we introduced new technologies to improve how we manage donations including switching our donations and shop payment platform to Shopify. Contactless card donation points were also trialled at the Trailblazing Walks and other charity events.

Community fundraising was significantly boosted above expected income for 2023, through continued promotion in line with the profile of the Charity for its 50th Anniversary.

Significant funds were raised via the JustGiving platform, including in excess of £4k raised by a member who walked the entire trail following their retirement.

Commemorations and In-Memoria

'Free Wills' partnership launched with Tozers LLP, launched for 50th Anniversary but forging pathway for ongoing relationship, resulted in a number of pledges bringing legacy pledges to SWCPA above £500k. In-memory Mile Maker scheme introduced which addresses lack of furniture availability on the Path, with three successfully installed in 2023, and further pledges for the year ahead.



Corporate Engagement

The 50th anniversary celebrations drove much of the corporate support for the year. The Trailblazer Walk was supported by Cotswold Outdoor as headline sponsor, with GWR, Devonian Water, Active Challenge, and Hattiers Rum also supporting the event. A 50th anniversary commemorative edition of the **Coast Path Passport** was sponsored by Luxury Coastal. The **South West Coast Path Photographer of the Year** exhibition at Ocean Studios was made possible with the support of St Austell Brewery.

South West Water continued their sponsorship of the charity over the year. Athletic Brewing shifted their previous sponsorship to directly invest in the Coast Path from their Two for the Trail fund to our Storm Damage Appeal. MACS Adventures supported the Step Up Appeal with a £5k donation, and Luggage Transfers supported through generating £1.6k in donations from their customers. The South West Business Council continued to support the Association through their Charity of the Year programme.

Way Makers

We saw an 8% increase in the number of *Way Makers* in 2023 with over 450 businesses now part the scheme. In 2023 we launched new on-line search finder making it easier for Path visitors to locate Way Maker accommodation, food and drink and experience stop-offs, including passport stamping points. The Passport programme continued to grow with over 120 Passport points established along the Coast Path. This was aided by setting up passport stamping point partnerships with businesses with multiple sites along the Path like Parkdean Resorts adding 17 new points.

The charity's *Mile Maker* programme continues to grow with businesses and individuals supporting the costs of maintaining the Coast Path along an average one-mile stretch. Turnstyle Designs supported 2 miles of the trails through the Business Mile Maker programme.

Our *Coast Path Friendly* programme raised just over £1k for path maintenance to mitigate against the impacts of events along the National Trail.

Marketing and Communications

In the year that marked the 50th anniversary of the Association, all energy was placed into the activities and events created to raise the profile of the Association and to build engagement between our volunteers, stakeholders, SWCPA HQ team and supporters.

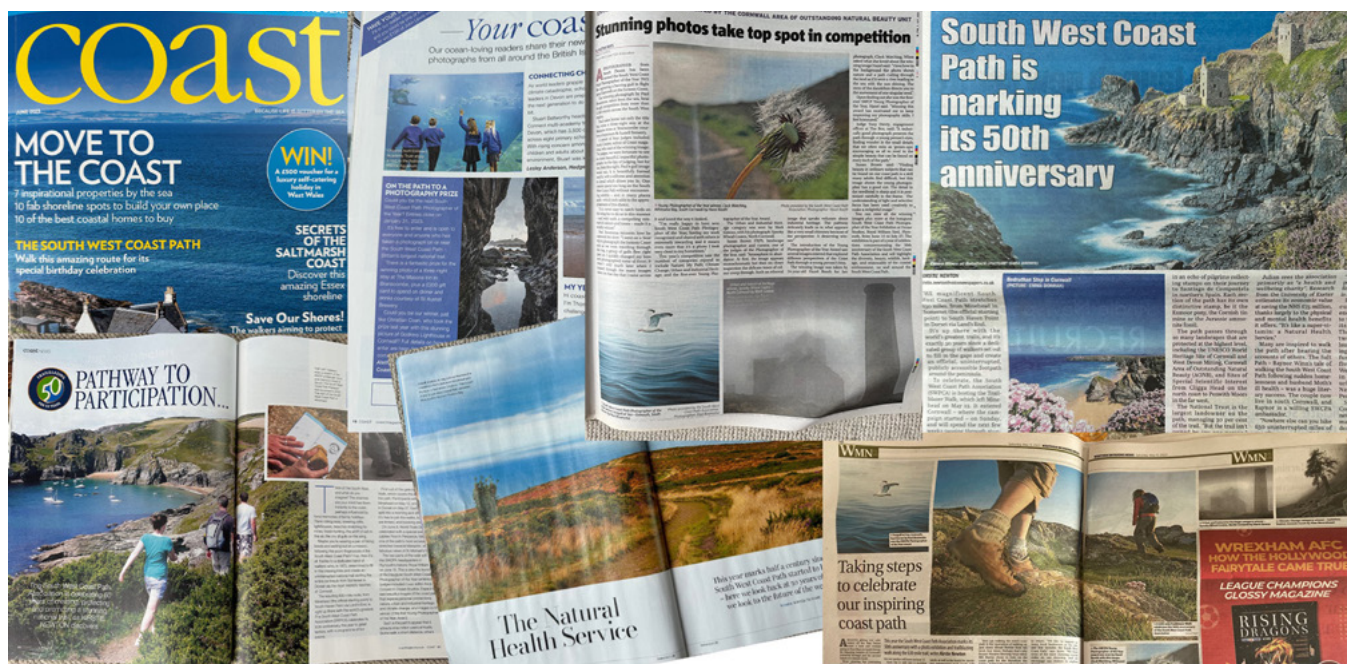
Trailblazing remained our flagship member bi-annual publication that includes news from the charity, our members, trustees, and guest articles exploring issues pertinent to the care and protection of the National Trail. The spring and autumn issues focussed on our 50th anniversary and included articles that looked back on the work and activities that have driven the charity to where it

is today. The magazine also highlighted the diverse range of volunteers who devote their time and passion to the charity, and shared stories from our members in the ever popular 'completers' section.

Our 2022 photo competition received over 1,500 entries with an image of a herring gull selected as the winner. As part of the 50th anniversary celebrations for the first time ever we held an exhibition of the winning images at Ocean Studios, Royal William Yard that was sponsored by St Austell Brewery. An estimated 5,000 people viewed the exhibition whilst it was on display (June – August). Following the end of the exhibition we sold the framed pictures via our online shop as a fundraising initiative.

In September 2023 we increased the number of categories in the competition to include Nature; Urban Lines; Your Path; Climate Change; Sky Shot, and a Young Photographer of the Year Award.

Content on the website was updated throughout the year. In 2023 we posted 41 blogs that were viewed by 30,164 visitors – an increase of 240% compared to 2022. A change in Google's search algorithms temporarily impacted our ranking in the search engine, with a drop in traffic to our web site over this period. In response, we invested in the hosting platform we use for the web site, upgrading obsolete software systems. The web site is now back up at number 1 in the search engine rankings and running faster than previously.



Social Media and eCommunications

Throughout 2023 we issued two eNews every month to members and wider supporters – reaching an audience of around 9,000 each month. Quarterly updates that included information on the Association as well as relevant tourism research and news were also provided to our Way Makers. Social media engagement continued to grow over the year with Facebook followers increasing by 5% and Instagram by 15%. X (formerly Twitter) only grew by 0.1% and this is a reflection of the changes and turmoil for the platform over the year. We also added a Threads channel, a new social channel launched by Meta to rival X, to our social media presence and already have grown an audience of 5.5k. We have also been more engaged on our LinkedIn account and at the end of 2023 with around 800 followers – predominantly key stakeholders. We are now reaching a combined audience of over 105k on all our social channels.

Our eNews continues to include information on the charity (Path News); Fundraising (Make a Difference); Explore (Walks); Shop; and a Members section for the members eNews. Our open rates are above the national average, with member eNews at 62% and supporters eNews at 46%. Taking into consideration our social media channels, blog site, and eNews, we are talking to a combined audience of 136k.

In the News

The team worked hard to generate press and media interest in the 50th anniversary celebrations that resulted in several regional BBC Radio interviews, a news piece on the 630 Miles Podcast on BBC Spotlight, and a piece on the Trailblazer Walk on ITV Westcountry. We also received widespread coverage in many of the regional glossy magazines, articles in The Sunday Times, Coast magazine and interviews with international media organisations such as Der Spiegel. The 50th anniversary press received has helped us

build long-term relationships with key media outlets and has seen awareness raised of the Association.

Maps, Guides and Merchandise

The charity's retail income dropped by 4% compared to 2022. Maps, guides and books accounted for over 52% of the retail income. After trialling in the second half of 2022 a new 50th Anniversary Passport was introduced in 2023 with over 1,700 sales over the year.

Table 8: Number of Maps and Guides sold by the Association 2016 to 2023

Publications	2016	2017	2018	2019	2020	2021	2022	2023
Complete Guide	636	542	1,103	1,191	1,404	2,130	2,129	1,530
Reverse Guide	N/A	132	153	179	289	348	248	278
Day Walking Guides	1,981	3,166	3,446	2,804	2,778	2,920	3,732	3,420

Running the charity

Governance

Key governance issues for the Board over the year included oversight of a new five-year business plan, the 50th anniversary celebrations, trustee recruitment and the Coast Path Connector's programme.

Graham Keene resigned as a Trustee in June. Hilary Dinsdale stood down from the position of Treasurer in June but remains a Trustee. Kevin Thomas was elected as Treasurer following the June AGM. Bob Mark was re-elected as the Chair and Philip Spencer as Vice Chair. Lucy Daniels resigned as a Trustee in August. Following a recruitment campaign two new trustees were co-opted to the Board in November: Zoë Kibbey and Ruth Adams.

Annual General Meeting

The Association's Annual General Meeting (AGM) was held as a face-to-face meeting at Royal William Yard in June as part of the 50th anniversary celebrations of the charity. The AGM was attended by around 100 members and included presentations by the Chair on the work of the charity, and the Treasurer on the 2022 Accounts. A 50th anniversary cake cutting ceremony was overseen by Lizzie Wallace and Bob Mark. The AGM was followed with a completers certificate ceremony directed by Philip Spencer.

Human Resources

The successful recruitment of five Coast Path Connectors project officer increased the size of the team in 2023. New HR policies and procedures were developed and training delivered to the team and volunteers in response to an increased focus of the charity's outreach work and expansion of the role of volunteers through the CPC project and 50th Anniversary Celebrations

Enquiries and Complaints

The charity continues to receive over 1,000 enquiries a month, with a third of these coming from members. The charity dealt with several issues and complaints over the year. Most complaints were related to web site issues in the summer which were resolved.



Top: Lizzie Wallis cutting the 50th cake with Bob Mark



Bottom: Lindsay Shaw being presented with his Completer certificate from Deputy Chair, SWCPA, Philip Spencer at the Completers Ceremony following the AGM

Achievements and Performance



Trailblazer Walk, Dorset

Key Achievements

The most significant achievement of 2023 was the successful delivery of the 50th anniversary celebrations including the Trailblazing Walk. The 50th anniversary was an important milestone for the charity and an opportunity to thank the trailblazing volunteers who had the vision 50 years ago to champion the South West Coast Path. Having one of our current volunteers, Steve Church, receive a King Charles III Coronation Champion Award recognised at the finale of the Trailblazer Walk was the icing on the cake. Steve has supported the Association for many years as both a Trustee and currently as a long-serving and respected Chair of the Path Committee.

The Trailblazer Walk gave an opportunity for members, volunteers, trustees and team to spend time with local path managers, rangers and access officers on their stretch of the Coast Path. This helped highlight how the Coast Path is co-created and co-managed and that the charity can only have impact by working on partnership with the many landowners, businesses, highways authorities and wider stakeholders to deliver a world class trail experience.

The celebrations over 2023 also gave the charity a platform to showcase the Coast Path and its positive impacts on health and wellbeing and local visitor economy. In addition, we were

able to raise awareness of the potential the Coast Path corridor has to help mitigate against the interconnected challenges of climate change and nature crisis.

We successfully delivered the first year of charity's new five-year business plan. The 50th anniversary celebrations enabled us to raise over £900k over the year. Much of this fundraising was for specific projects protecting and promoting the Coast Path. The Business Plan focusses our work to maximise the public benefits delivered by the SW Coast Path. Our priority in 2023 was to protect and enhance the Coast Path experience not only for people who use and enjoy the path, but also those who are currently excluded from this national resource.

The National Lottery Heritage Funded *Coast Path Connectors* project delivered its targets in the first year of the project. In addition to training new community engagement volunteer rangers and leading walks to improve equity of access, each of the five hubs (Plymouth, West Cornwall, North Devon, Torbay and Weymouth) has developed local partnerships to improve equity of access through a series of organised walks. The project is helping support formal green social prescribing as well as building the capacity of local organisations to lead their own walks.



Trailblazer Walk

Public Benefit Statement

The Trustees have reviewed the activities of the Charity in the light of the guidance published by the Charity Commission on public benefit. The Trustees are satisfied that the Charity's activities are for the public benefit. The areas where public benefit is being provided are:

- making improvements to the Path so that people using it gain the maximum enjoyment;
- supporting path improvements to increase accessibility to and along the Coast Path for the public;
- promoting the health and wellbeing benefits of walking along the Path;
- encouraging recognition of the benefits of the path corridor for wider nature recovery;
- improvements to increase the use of the Path out of season;
- increased publicity to promote the Path to the widest section of the population;
- working with partners to identify and address barriers to access; and
- close working with other National Trails and world trails to promote the public benefits they offer.

Financial Review

Key Financial Performance Indicators 2023 Annual Report

The Charity receives income from a variety of sources and for 2023 this comprised:

Income	
Grants & Trusts	52%
Memberships	15%
Donations, Gift Aid and Legacies	19%
Way Makers & Corporate Sponsorship	5%
Shop Sales	8%
Other Income	1%
Total	100%

The Charity faced continuing challenges arising from the wider economic climate. However, it continued to adopt a proactive approach to income generation and income generated was £204k over the budget.

The Charity spent funds on a range of activities and for 2023 this comprised:

Expenditure	
Charitable Activities Support	58%
Raising Funds	9%
Path Improvements	22%
Memberships	4%
Promotion & Development	5%
Guides & Maps	2%
Total	100%

The percentage spent by the charity on *charitable activities* remained the same and *path improvements* rose by 7% compared to 2022. Whilst the percentage spent on *raising funds* continued to fall down from 13% in 2021 to 9% in 2023. The percentage of funds spent on *membership costs* dropped by 3% and *guides & maps* dropped by 1%. *Promotion & development* rose by 1% when compared to 2021 costs.

During the year ending 31 December 2023, the charity received total income of £905k (£204 over budget) and incurred total expenditure was £963k (£20k under budget). The 2023 budget was set with the assumption of £280k investment over the year. However, with the significant growth in income and underspend in expenditure the final net expenditure was £57k.

Investment Policy and Performance

The Charity has a policy of low-risk investment in financial institutions which offer ethical products. All reserves are placed in interest bearing cash deposits within a variety of accounts, in order to keep within the Financial Services Compensation Scheme limit of £85k. The Finance and HR Committee and Trustees receive regular reports relating to account balances and interest rates.

Going Concern

An entity prepares financial statements on a going concern basis when, under the going concern assumption, the entity is viewed as continuing in business for the foreseeable future. After making appropriate enquiries, the Trustees have a reasonable expectation that the Charity has adequate resources to continue in operational existence for the foreseeable future. For this reason, they continue to adopt the going concern basis in preparing the financial statements.

Principal Risks and Uncertainties

The principal risks, based on likelihood and impact, faced by the Charity in 2023 were:

- Reduction of funding by local and national government
- Impact of the cost-of-living crisis on operational costs and support for the charity
- Impact on grant funding of the United Kingdom's decision to leave the European Union
- Increasing costs to mitigate against the impacts of climate change

Trustees manage these risks by recording them in a Register and defining a set of activities to reduce, manage or mitigate the risk were it to be realised. Trustees regularly review these activities to ensure the Charity is appropriately prepared.

Reserves Policy

At the year end the Charity had total reserves of £590k which comprise:

- **Restricted reserves of £53k** – restricted for specific uses as specified in the conditions attached to their source from legacies, grants and donations.

- **Designated reserves of £333k** – designated by the Trustees for capacity building, contribution towards the delivery of the Trail Partnership Project and to promote and protect the Coast Path.
- **Unrestricted reserves of £204k** – these reserves are needed to bridge any gaps that arise between spending and income received due to unforeseen circumstances which are outside of the Association's control. For example, this might include the impact of national economic conditions on our ability to generate income or the need to deal with emergency repairs.

The Charity's reserves policy is intended to ensure the Charity has sufficient unrestricted reserves to meet up to 6 months of our day to day running ("operational") costs. The level of reserves is reviewed at least twice a year by the Finance and HR Committee, and not only reflects the relevant period in the current financial year but also takes into account the pressures on our budget moving forward. The Reserves Policy target was met in 2023.



Trailblazer Walk to Lulworth Cove

Structure, Governance and Management

Governing Document

The South West Coast Path Association is a Charitable Incorporated Organisation (CIO) governed by its Constitution approved by members on 28th March 2015 and subsequently accepted by the Charity Commission on 4th September 2015. It is registered as a Charity with the Charity Commission.

Method of Appointment or Election of Trustees

The management of the charity is the responsibility of the Trustees who are elected and co-opted under the terms of the Constitution. Trustees are elected every year by members at the AGM, serving until the following AGM. All Trustees are eligible for re-election each year. The procedure governing this process is set out in the Constitution and Rules. Officers (Chair, Vice Chair, Hon Secretary and Treasurer) are elected by the Trustees at the first meeting of the Board of Trustees following AGM. Members are informed at AGM of the names of those Trustees intending to stand for the Officer positions. A maximum of twelve Trustees are permitted under the current Constitution. Trustees may co-opt additional Trustees between AGMs, so long as the total does not exceed twelve.

Organisational Structure and Decision Making

The Board of Trustees hosts four formal meetings a year at Headquarters or virtually with

occasional conference calls, as required, between meetings. A further two meetings are held to focus upon project delivery with a site visit including relevant staff in the spring, and the second to consider the progress and review of the Business Plan in the autumn. The Board has established and monitors the overall governance of the Charity and determines membership, terms of reference and procedures of committees and other groups. It receives reports and recommendations from its committees for ratification. All Trustees have access to the minutes of committees allowing scrutiny of their discussions and activities. The Board has the power to create Working Groups to perform specific tasks over a limited timescale.

The following decisions are reserved to the Board of Trustees: to consider any proposals for changes to the status or constitution of the Charity and its committee structure, to appoint or remove the Chair and/or Vice Chair, to approve the budget, to approve changes to membership subscription rates.

The Trustees are responsible for setting general policy, adopting a Business Plan and budget, approving the statutory accounts, monitoring Charity performance with the use of budgets and other data, evaluating and mitigating risks, and making major decisions about the direction of the Charity, capital expenditure and resources.

Committees and Working Groups

There are three committees and four working groups:

Path Committee

This is the primary group which looks after operational matters concerned with the Path. It meets four times a year allowing all Trustees to attend as observers. Membership is comprised of the Area Reps, a Rambler's representative, the National Trail Officer, three Trustees, the Association Director and an independent Chair. One of its main purposes is to review requests and approve the allocation of the Charity's own resources to projects protecting and promoting the Coast Path. Chaired by Steve Church.

Finance and Human Resources Committee

This meets at least four times a year and is responsible for all substantial matters of finance including human resources. This includes, but is not limited to, approving funding bids, approving the Charity's quarterly management accounts, approval of the annual budget and the appointment of the Charity's legal and financial advisers. Finance policies are developed by the Committee and approved by the Board of Trustees whereas finance procedures are owned and maintained by the Committee. Membership includes the Chairman, Treasurer, Finance

Manager, Director plus at least one other Trustee. Chaired by Hilary Dinsdale to June 2023 and subsequently by Kevin Thomas.

Membership and Fundraising Committee

The Membership and Fundraising Committee's main objectives are to oversee the fundraising and engagement work of the Charity set out in the Business Plan. This includes membership, corporate support, trusts and grants, individual giving, events, trading activity and communications. Membership of the Committee comprises at least three Trustees and two voting Association staff. Other non-voting staff are co-opted to the Committee. Chaired by Philip Spencer.

Planning Working Group

The Planning Working Group has oversight of planning policy impacting on the Coast Path. In addition, it responds to planning applications, advises on neighbourhood plans and inputs to policy (e.g. Green infrastructure and National Planning Policy Framework). The Group comprises the Chair of the SWCP Trail Partnership, Path Committee Chair, Volunteer Planning Advisers, Association's Director and the National Trail Officer. This Working Group reports to the Path Committee.

Trustee Recruitment Working Group/Interview Panel

The Trustee Recruitment Working Group addresses issues around skills and diversity in membership of the Board. The Working Group comprises three Trustees, one of whom is the Chair or Vice-Chair and the Association's Director and reports to the Board of Trustees. Chaired by Lucy Daniel to August 2023. Chaired by Bob Mark to December 2023.

Health and Wellbeing Working Group

The Trustee Health and Wellbeing Working Group gives strategic direction to health and wellbeing work across the charity, looking to maximise impact of our programmes across the Coast Path. The Working Group comprises three Trustees and the Association's Director, National Trail Officer and Coast Path Connectors Project Manager and reports to the Board. Chaired by David Morris.

50th Anniversary Working Group

This Working Group was set up to give oversight of the charity's 50th anniversary celebrations and fundraising. The Working Group comprises three Trustees and the Association's Director and reported to the Board. The Working Group will be dissolved following completion and reporting of the 50th Anniversary. Chaired by Graham Keen to June 2023 and subsequently by Philip Spencer.

Key Management

The Board of Trustees have devolved responsibility for day-to-day management of the Charity to the Director. The Director implements the policies laid down by the Trustees and reports back to them on performance.

The Trustees have approved a Scheme of Delegation between the Trustees and Director. This forms part of the Charity's Rules and grants the Director latitude to act within the scope of the approved annual or project budget and within the Business Plan. The Business Plan has identified Lead Trustees for specific work items and the Director is authorised to proceed subject to consultation with the Lead Trustees, rather than the full Board.

Discretionary spend up to £2,000 on items not in either the annual budget or project budgets is permitted by the Scheme.

Related Party and Other Connected Charities and Organisations

None of our Trustees receive remuneration or other benefit from their work with the Charity. Trustees are required to complete an annual Declaration of Interests as well as to state any conflicts of interest before the start of each Board meeting. Trustees are also required to pass the HMRC "fit and proper" test as the Charity makes claims for tax relief.

*Trailblazer Walk starting at
South Haven Point*



Plans for Future Periods



Future Developments

Our priority for the Association in 2024 will be to deliver year two of our Business Plan as efficiently and effectively as possible under challenging economic and physical environment conditions. At time of writing there are some specific programmes of activity we will focus on over 2024, including:

- deliver the National Lottery Heritage Fund supported Coast Path Connectors project, scaling up our health and wellbeing projects;
- deliver our Every Mile Matters awareness and fundraising campaign to show how the Coast Path is delivering the sustainability agenda and articulate the case for support;
- build the charity's volunteer management capacity, integrating new community engagement volunteers with our path volunteers;
- improving our data sharing with highways authorities to ensure our conditions survey feeds into future maintenance of the trail;
- liaise with the England Coast Path designation team to maximise benefits for coastal access along the Path corridor and champion the best route for the KCIIECP in the South West;
- leverage partnerships to reconnect people with the coastal environment with a strong focus on mental health and equity of access;
- deliver the Coastal Wildbelt pilot project in the SW working with National Trails UK to maximise the public benefits from the KCIIECP coastal margin including better nature for people;
- develop our partnership for an affordable accommodation offer for long-distance hikers
- develop our Geographical Information System to underpin management plans;
- increase our understanding of the Coast Path and its public benefits by working with universities to influence the research agenda;
- secure long-term core funding for maintenance of National Trails in parity with the rest of the protected landscape family, working with government and National Trails UK;
- work with the National Trails UK to ensure the National Trails family has a voice and active role in the Protected Landscapes Partnership;
- work with Natural England, VisitBritain & National Coastal Tourism Academy to promote the KCIIECP;
- trial new digital engagement on the trail to test new ways of engaging support for the SWCP;
- work with the World Trails Network to promote the impact and public benefit of trails;

Trustees' Responsibilities Statement

The Trustees are responsible for preparing the Trustees' report and the financial statements in accordance with applicable law and United Kingdom Accounting Standards (United Kingdom Generally Accepted Accounting Practice).

The law applicable to charities in England and Wales requires the Trustees to prepare financial statements for each financial year which give a true and fair view of the state of affairs of the charity and of the incoming resources and application of resources of the charity for that period. In preparing these financial statements, the Trustees are required to:

- select suitable accounting policies and then apply them consistently;
- observe the methods and principles in the Charities Statement of Recommended Practice (SORP);
- make judgments and accounting estimates that are reasonable and prudent;
- prepare the financial statements on the going concern basis unless it is inappropriate to presume that the charity will continue in operation.

The Trustees are responsible for keeping proper accounting records that are sufficient to show and explain the charity's transactions and disclose with reasonable accuracy at any time the financial position of the charity and enable them to ensure that the financial statements comply with the Charities Act 2011, the Charity (Accounts and Reports) Regulations 2008 and the provisions of the trust deed. They are also responsible for safeguarding the assets of the charity and hence for taking reasonable steps for the prevention and detection of fraud and other irregularities.

This report was approved by the Trustees, on and signed on their behalf by:

Bob Mark, Chair

SOUTH WEST COAST PATH ASSOCIATION**INDEPENDENT EXAMINER'S REPORT
FOR THE YEAR ENDED 31 DECEMBER 2023**

**INDEPENDENT EXAMINER'S REPORT TO THE TRUSTEES OF SOUTH WEST COAST PATH
ASSOCIATION ('the Charity')**

I report to the charity Trustees on my examination of the accounts of the Charity for the year ended 31 December 2023.

RESPONSIBILITIES AND BASIS OF REPORT

As the Trustees of the Charity you are responsible for the preparation of the accounts in accordance with the requirements of the Charities Act 2011 ('the 2011 Act').

I report in respect of my examination of the Charity's accounts carried out under section 145 of the 2011 Act and in carrying out my examination I have followed the applicable Directions given by the Charity Commission under section 145(5)(b) of the 2011 Act.

INDEPENDENT EXAMINER'S STATEMENT

Since the Charity's gross income exceeded £250,000 your examiner must be a member of a body listed in section 145 of the 2011 Act. I confirm that I am qualified to undertake the examination because I am a member of ICAEW, which is one of the listed bodies.

Your attention is drawn to the fact that the Charity has prepared the accounts in accordance with Accounting and Reporting by Charities: Statement of Recommended Practice applicable to charities preparing their accounts in accordance with the Financial Reporting Standard applicable in the UK and Republic of Ireland (FRS 102) in preference to the Accounting and Reporting by Charities: Statement of Recommended Practice issued on 1 April 2005 which is referred to in the extant regulations but has been withdrawn.

I understand that this has been done in order for the accounts to provide a true and fair view in accordance with the Generally Accepted Accounting Practice effective for reporting periods beginning on or after 1 January 2015.

I have completed my examination. I confirm that no matters have come to my attention in connection with the examination giving me cause to believe that in any material respect:

1. accounting records were not kept in respect of the Charity as required by section 130 of the 2011 Act; or
2. the accounts do not accord with those records; or
3. the accounts do not comply with the applicable requirements concerning the form and content of accounts set out in the Charities (Accounts and Reports) Regulations 2008 other than any requirement that the accounts give a 'true and fair' view which is not a matter considered as part of an independent examination.

I have no concerns and have come across no other matters in connection with the examination to which attention should be drawn in this report in order to enable a proper understanding of the accounts to be reached.

SOUTH WEST COAST PATH ASSOCIATION**INDEPENDENT AUDITORS' REPORT TO THE OF SOUTH WEST COAST PATH ASSOCIATION
(CONTINUED)
FOR THE YEAR ENDED 31 DECEMBER 2023**

This report is made solely to the Charity's Trustees, as a body, in accordance with Part 4 of the Charities (Accounts and Reports) Regulations 2008. My work has been undertaken so that I might state to the Charity's Trustees those matters I am required to state to them in an independent examiner's report and for no other purpose. To the fullest extent permitted by law, I do not accept or assume responsibility to anyone other than the Charity and the Charity's Trustees as a body, for my work or for this report.

Signed:



Dated: 31 May 2024

Pamela Tuckett
FCA, DChA

BISHOP FLEMING LLP
Chartered Accountants
Salt Quay House
4 North East Quay
Sutton Harbour
Plymouth
PL4 0BN

SOUTH WEST COAST PATH ASSOCIATION

STATEMENT OF FINANCIAL ACTIVITIES
FOR THE YEAR ENDED 31 DECEMBER 2023

	Note	Unrestricted funds 2023 £	Restricted funds 2023 £	Total funds 2023 £	Total funds 2022 £
INCOME FROM:					
Donations and legacies	4	120,622	54,397	175,019	154,600
Charitable activities		178,509	471,166	649,675	412,288
Other trading activities		73,212	-	73,212	74,008
Investments	7	12,106	-	12,106	3,995
TOTAL INCOME		384,449	525,563	910,012	644,891
EXPENDITURE ON:					
Raising funds	8	87,248	-	87,248	96,106
Charitable activities	9	345,984	533,551	879,535	634,971
TOTAL EXPENDITURE		433,232	533,551	966,783	731,077
NET EXPENDITURE		(48,783)	(7,988)	(56,771)	(86,186)
Transfers between funds	19	16,185	(16,185)	-	-
NET MOVEMENT IN FUNDS		(32,598)	(24,173)	(56,771)	(86,186)
RECONCILIATION OF FUNDS:					
Total funds brought forward		569,497	77,660	647,157	733,343
Net movement in funds		(32,598)	(24,173)	(56,771)	(86,186)
TOTAL FUNDS CARRIED FORWARD	19	536,899	53,487	590,386	647,157

The Statement of financial activities includes all gains and losses recognised in the year.

The notes on pages 28 to 43 form part of these financial statements.

SOUTH WEST COAST PATH ASSOCIATION

BALANCE SHEET
AS AT 31 DECEMBER 2023

	Note	2023 £	2022 £
CURRENT ASSETS			
Stocks	13	8,966	7,289
Debtors	14	76,493	115,381
Investments	15	518,002	513,030
Cash at bank and in hand	22	151,171	154,302
		<u>754,632</u>	<u>790,002</u>
Creditors: amounts falling due within one year	16	(149,386)	(124,918)
NET CURRENT ASSETS		<u>605,246</u>	<u>665,084</u>
TOTAL ASSETS LESS CURRENT LIABILITIES		<u>605,246</u>	<u>665,084</u>
Creditors: amounts falling due after more than one year	17	(14,860)	(17,927)
TOTAL NET ASSETS		<u><u>590,386</u></u>	<u><u>647,157</u></u>
CHARITY FUNDS			
Restricted funds	19	53,487	77,660
Unrestricted funds	19	536,899	569,497
TOTAL FUNDS		<u><u>590,386</u></u>	<u><u>647,157</u></u>

The financial statements were approved and authorised for issue by the Trustees and signed on their behalf by:



Mr R Mark
(Chair of Trustees)

Date: 28/5/24

The notes on pages 28 to 43 form part of these financial statements.

SOUTH WEST COAST PATH ASSOCIATION

STATEMENT OF CASH FLOWS
FOR THE YEAR ENDED 31 DECEMBER 2023

	Note	2023 £	2022 £
CASH FLOWS FROM OPERATING ACTIVITIES			
Net cash used in operating activities	21	(10,265)	(145,332)
CASH FLOWS FROM INVESTING ACTIVITIES			
Dividends, interests and rents from investments		(4,972)	84,519
Investment income received		12,106	3,995
NET CASH PROVIDED BY INVESTING ACTIVITIES		7,134	88,514
CASH FLOWS FROM FINANCING ACTIVITIES			
NET CASH PROVIDED BY FINANCING ACTIVITIES		-	-
CHANGE IN CASH AND CASH EQUIVALENTS IN THE YEAR		(3,131)	(56,818)
Cash and cash equivalents at the beginning of the year		154,302	211,120
CASH AND CASH EQUIVALENTS AT THE END OF THE YEAR	22	151,171	154,302

The notes on pages 28 to 43 form part of these financial statements

SOUTH WEST COAST PATH ASSOCIATION

NOTES TO THE FINANCIAL STATEMENTS FOR THE YEAR ENDED 31 DECEMBER 2023

1. GENERAL INFORMATION

South West Coast Path Association is a charitable unincorporated organisation, registered in England and Wales (charity number: 1163422). The registered office is Unit 11, Residence 2, Royal William Yard, Plymouth, PL1 3RP.

2. ACCOUNTING POLICIES

2.1 BASIS OF PREPARATION OF FINANCIAL STATEMENTS

The financial statements have been prepared in accordance with the Charities SORP (FRS 102) - Accounting and Reporting by Charities: Statement of Recommended Practice applicable to charities preparing their accounts in accordance with the Financial Reporting Standard applicable in the UK and Republic of Ireland (FRS 102) (effective 1 January 2015), the Financial Reporting Standard applicable in the UK and Republic of Ireland (FRS 102) and the Charities Act 2011.

The financial statements have been prepared to give a 'true and fair' view and have departed from the Charities (Accounts and Reports) Regulations 2008 only to the extent required to provide a 'true and fair' view. This departure has involved following the Charities SORP (FRS 102) published on 16 July 2014 rather than the Accounting and Reporting by Charities: Statement of Recommended Practice effective from 1 April 2005 which has since been withdrawn.

South West Coast Path Association meets the definition of a public benefit entity under FRS 102. Assets and liabilities are initially recognised at historical cost or transaction value unless otherwise stated in the relevant accounting policy.

2.2 INCOME

All income is recognised once the Charity has entitlement to the income, it is probable that the income will be received and the amount of income receivable can be measured reliably.

The recognition of income from legacies is dependent on establishing entitlement, the probability of receipt and the ability to estimate with sufficient accuracy the amount receivable. Evidence of entitlement to a legacy exists when the Charity has sufficient evidence that a gift has been left to them (through knowledge of the existence of a valid will and the death of the benefactor) and the executor is satisfied that the property in question will not be required to satisfy claims in the estate. Receipt of a legacy must be recognised when it is probable that it will be received and the fair value of the amount receivable, which will generally be the expected cash amount to be distributed to the Charity, can be reliably measured.

Grants are included in the statement of financial activities on a receivable basis. The balance of income received for specific purposes but not expended during the period is shown in the relevant funds on the balance sheet. Where income is received in advance of entitlement of receipt, its recognition is deferred and included in creditors as deferred income. Where entitlement occurs before income is received, the income is accrued.

Income tax recoverable in relation to donations received under Gift Aid or deeds of covenant is recognised at the time of the donation. Income tax recoverable in relation to investment income is recognised at the time the investment income is receivable.

Income received for Life Memberships are credited to deferred income and from there recognised as income in 15 equal annual instalments.

SOUTH WEST COAST PATH ASSOCIATION

NOTES TO THE FINANCIAL STATEMENTS FOR THE YEAR ENDED 31 DECEMBER 2023

2. ACCOUNTING POLICIES (continued)

2.3 EXPENDITURE

Expenditure is recognised once there is a legal or constructive obligation to transfer economic benefit to a third party, it is probable that a transfer of economic benefits will be required in settlement and the amount of the obligation can be measured reliably. Expenditure is classified by activity. The costs of each activity are made up of the total of direct costs and shared costs, including support costs involved in undertaking each activity. Direct costs attributable to a single activity are allocated directly to that activity. Shared costs which contribute to more than one activity and support costs which are not attributable to a single activity are apportioned between those activities on a basis consistent with the use of resources. Central staff costs are allocated on the basis of time spent, and depreciation charges allocated on the portion of the asset's use.

Expenditure on raising funds includes all expenditure incurred by the Charity to raise funds for its charitable purposes and includes costs of all fundraising activities events and non-charitable trading.

Expenditure on charitable activities is incurred on directly undertaking the activities which further the Charity's objectives, as well as any associated support costs.

All expenditure is inclusive of irrecoverable VAT.

2.4 INTEREST RECEIVABLE

Interest on funds held on deposit is included when receivable and the amount can be measured reliably by the Charity; this is normally upon notification of the interest paid or payable by the institution with whom the funds are deposited.

2.5 STOCKS

Stocks are valued at the lower of cost and net realisable value after making due allowance for obsolete and slow-moving stocks. Cost includes all direct costs and an appropriate proportion of fixed and variable overheads.

2.6 DEBTORS

Trade and other debtors are recognised at the settlement amount after any trade discount offered. Prepayments are valued at the amount prepaid net of any trade discounts due.

2.7 CASH AT BANK AND IN HAND

Cash at bank and in hand includes cash and short-term highly liquid investments with a short maturity of three months or less from the date of acquisition or opening of the deposit or similar account.

2.8 LIABILITIES AND PROVISIONS

Liabilities are recognised when there is an obligation at the balance sheet date as a result of a past event, it is probable that a transfer of economic benefit will be required in settlement, and the amount of the settlement can be estimated reliably.

Liabilities are recognised at the amount that the Charity anticipates it will pay to settle the debt or the amount it has received as advanced payments for the goods or services it must provide.

Provisions are measured at the best estimate of the amounts required to settle the obligation. Where the effect of the time value of money is material, the provision is based on the present value of those amounts, discounted at the pre-tax discount rate that reflects the risks specific to the liability. The unwinding of the discount is recognised in the statement of financial activities as a finance cost.

SOUTH WEST COAST PATH ASSOCIATION**NOTES TO THE FINANCIAL STATEMENTS
FOR THE YEAR ENDED 31 DECEMBER 2023**

2. ACCOUNTING POLICIES (continued)**2.9 PENSIONS**

The Charity operates a defined contribution pension scheme and the pension charge represents the amounts payable by the Charity to the fund in respect of the year.

2.10 FUND ACCOUNTING

General funds are unrestricted funds which are available for use at the discretion of the Trustees in furtherance of the general objectives of the Charity and which have not been designated for other purposes.

Designated funds comprise unrestricted funds that have been set aside by the Trustees for particular purposes. The aim and use of each designated fund is set out in the notes to the financial statements.

Restricted funds are funds which are to be used in accordance with specific restrictions imposed by donors or which have been raised by the Charity for particular purposes. The costs of raising and administering such funds are charged against the specific fund. The aim and use of each restricted fund is set out in the notes to the financial statements.

Investment income, gains and losses are allocated to the appropriate fund.

3. CRITICAL ACCOUNTING ESTIMATES AND AREAS OF JUDGEMENT

Estimates and judgements are continually evaluated and are based on historical experience and other factors, including expectations of future events that are believed to be reasonable under the circumstances.

Critical accounting estimates and assumptions:

The Charity makes estimates and assumptions concerning the future. The resulting accounting estimates and assumptions will, by definition, seldom equal the related actual results. The estimates and assumptions that have a significant risk of causing a material adjustment to the carrying amounts of assets and liabilities within the next financial year are discussed below.

Life memberships are deferred over the expected term of the membership. This has been assumed to be 15 years.

SOUTH WEST COAST PATH ASSOCIATION

NOTES TO THE FINANCIAL STATEMENTS
FOR THE YEAR ENDED 31 DECEMBER 2023

4. INCOME FROM DONATIONS AND LEGACIES

	Unrestricted funds 2023 £	Restricted funds 2023 £	Total funds 2023 £
Donations & Gift Aid	105,628	54,397	160,025
Legacies	14,994	-	14,994
	<u>120,622</u>	<u>54,397</u>	<u>175,019</u>

	Unrestricted funds 2022 £	Restricted funds 2022 £	Total funds 2022 £
Donations & Gift Aid	70,193	83,407	153,600
Legacies	1,000	-	1,000
	<u>71,193</u>	<u>83,407</u>	<u>154,600</u>

5. INCOME FROM CHARITABLE ACTIVITIES

	Unrestricted funds 2023 £	Restricted funds 2023 £	Total funds 2023 £
Membership Subscriptions	135,236	-	135,236
Waymaker Business Memberships	8,236	-	8,236
Sale of Guides & Maps	35,037	-	35,037
Trail Partnership Project	-	40,990	40,990
CAN Project Grants	-	540	540
Path Improvements Grant	-	22,460	22,460
National Trail Team Grants	-	92,150	92,150
Natural England Grants	-	248,450	248,450
Coast Path Connectors Grant	-	89,036	89,036
	<u>178,509</u>	<u>493,626</u>	<u>672,135</u>

SOUTH WEST COAST PATH ASSOCIATION

NOTES TO THE FINANCIAL STATEMENTS
FOR THE YEAR ENDED 31 DECEMBER 2023

	Unrestricted funds 2022 £	Restricted funds 2022 £	Total funds 2022 £
Membership Subscriptions	135,897	-	135,897
Waymaker Business Memberships	7,556	-	7,556
Sale of Guides & Maps	43,514	-	43,514
Trail Partnership Project	-	35,000	35,000
CAN Project Grants	-	3,641	3,641
Path Improvements Grant	-	1,000	1,000
National Trails Team Grant	-	91,428	91,428
Natural England Grant	-	83,704	83,704
Coast Path Connectors Grant	-	10,548	10,548
	<u>186,967</u>	<u>225,321</u>	<u>412,288</u>

6. FUNDRAISING INCOME

	Unrestricted funds 2023 £	Total funds 2023 £
Sale of Merchandise	32,077	32,077
Waymaker Business Sponsorships	10,223	10,223
Corporate Sponsorships	30,404	30,404
Misc Income	508	508
	<u>73,212</u>	<u>73,212</u>

	Unrestricted funds 2022 £	Total funds 2022 £
Sale of Merchandise	26,336	26,336
Waymaker Business Sponsorships	11,015	11,015
Corporate Sponsorships	35,916	35,916
Misc Income	741	741
	<u>74,008</u>	<u>74,008</u>

SOUTH WEST COAST PATH ASSOCIATION

NOTES TO THE FINANCIAL STATEMENTS
FOR THE YEAR ENDED 31 DECEMBER 2023

7. INVESTMENT INCOME

	Unrestricted funds 2023 £	Total funds 2023 £	Total funds 2022 £
Bank Interest	12,106	12,106	3,995

All prior year funds were unrestricted funds.

8. EXPENDITURE ON RAISING FUNDS

	Unrestricted funds 2023 £	Total funds 2023 £	Total funds 2022 £
Cost of Merchandise	22,079	22,079	26,275
Donations and Legacies Costs	8,735	8,735	9,375
Corporate and Waymaker Sponsorship Costs	17,838	17,838	11,767
Staff Costs	38,596	38,596	48,689
	<u>87,248</u>	<u>87,248</u>	<u>96,106</u>

9. ANALYSIS OF EXPENDITURE BY ACTIVITIES

	Activities undertaken directly 2023 £	Support costs 2023 £	Total funds 2023 £
Promotion, Protection & Improvement of Coast Path	319,144	557,473	876,617
Coast Path Connectors Project	2,918	-	2,918
	<u>322,062</u>	<u>557,473</u>	<u>879,535</u>

SOUTH WEST COAST PATH ASSOCIATION

NOTES TO THE FINANCIAL STATEMENTS
FOR THE YEAR ENDED 31 DECEMBER 2023

9. ANALYSIS OF EXPENDITURE BY ACTIVITIES (CONTINUED)

	Activities undertaken directly 2022 £	Support costs 2022 £	Total funds 2022 £
Promotion, Protection & Improvement of Coast Path	208,927	423,522	632,449
Coast Path Connectors Project	2,522	-	2,522
	<u>211,449</u>	<u>423,522</u>	<u>634,971</u>

ANALYSIS OF SUPPORT COSTS

	Total funds 2023 £	Total funds 2022 £
Staff Salaries & Employer Costs	388,169	304,063
Professional Fees	6,275	753
Volunteer Expenses	16,633	2,863
Other Staff Costs	29,627	15,990
Governance Costs	3,661	8,442
Premises Costs	24,880	23,772
Administration Costs	2,429	2,149
IT Expenses	63,310	48,667
Website Costs	-	86
Accountancy Fees	4,050	3,750
Irrecoverable VAT	18,439	12,987
	<u>557,473</u>	<u>423,522</u>

10. INDEPENDENT EXAMINER'S REMUNERATION

The independent examiner's remuneration amounts to an independent examiner fee of £4,050 (2022 - £3,795).

SOUTH WEST COAST PATH ASSOCIATION

NOTES TO THE FINANCIAL STATEMENTS
FOR THE YEAR ENDED 31 DECEMBER 2023

11. STAFF COSTS

	2023 £	2022 £
Wages and salaries	363,682	308,798
Social security costs	34,515	25,904
Contribution to defined contribution pension schemes	28,568	18,050
	<u>426,765</u>	<u>352,752</u>

The average number of persons employed by the Charity during the year was as follows:

	2023 No.	2022 No.
Support Staff	<u>11</u>	<u>9</u>

The number of employees whose employee benefits (excluding employer pension costs) exceeded £60,000 was:

	2023 No.	2022 No.
In the band £60,001 - £70,000	1	-

The Charity's volunteers take roles as Trustees, technical experts on one of our Committees or Working Groups or as Area or Local Representatives looking after a specific section of the Path. The latter walk the Path regularly, undertake an annual condition survey and report on any Path matters, they come together as the Path Committee to make important recommendations about projects that may need funding from Association or grant funds.

12. TRUSTEES' REMUNERATION AND EXPENSES

During the year, no Trustees received any remuneration or other benefits (2022: £Nil).

During the year ended 31 December 2023, expenses totalling £1,759 were reimbursed or paid directly to 5 Trustees (2022: £1,369 to 3 Trustees).

13. STOCKS

	2023 £	2022 £
Finished goods and goods for resale	<u>8,966</u>	<u>7,289</u>

SOUTH WEST COAST PATH ASSOCIATION

NOTES TO THE FINANCIAL STATEMENTS
FOR THE YEAR ENDED 31 DECEMBER 2023

14. DEBTORS

	2023 £	2022 £
DUE WITHIN ONE YEAR		
Trade debtors	15,987	14,933
Other debtors	5,291	1,334
Prepayments and accrued income	55,215	99,114
	<u>76,493</u>	<u>115,381</u>

15. CURRENT ASSET INVESTMENTS

	2023 £	2022 £
Cash investments	<u>518,002</u>	<u>513,030</u>

16. CREDITORS: AMOUNTS FALLING DUE WITHIN ONE YEAR

	2023 £	2022 £
Trade creditors	63,159	37,157
Accruals and deferred income	86,227	87,761
	<u>149,386</u>	<u>124,918</u>
	2023 £	2022 £
Deferred income at 1 January 2023	64,098	69,932
Resources deferred during the year	56,354	64,098
Amounts released from previous periods	(64,098)	(69,932)
DEFERRED INCOME AT 31 DECEMBER 2023	<u>56,354</u>	<u>64,098</u>

17. CREDITORS: AMOUNTS FALLING DUE AFTER MORE THAN ONE YEAR

	2023 £	2022 £
Deferred income	<u>14,860</u>	<u>17,927</u>

Deferred income due after more than 1 year includes amounts relating to income from Lifetime Memberships, which is being released over a period of 15 years straight line. In the current year, deferred income of £1,905 is due after more than 1 year in relation to TPP grants income from Devon Council and Exmoor NPA (2022: £2,380).

SOUTH WEST COAST PATH ASSOCIATION

NOTES TO THE FINANCIAL STATEMENTS
FOR THE YEAR ENDED 31 DECEMBER 2023

The aggregate amount of liabilities payable or repayable wholly or in part more than five years after the reporting date is:

	2023 £	2022 £
Deferred income	<u>2,587</u>	<u>5,179</u>

18. FINANCIAL INSTRUMENTS

	2023 £	2022 £
FINANCIAL ASSETS		
Financial assets measured at fair value through income and expenditure	<u>669,173</u>	<u>667,332</u>

Financial assets measured at fair value through income and expenditure comprise cash in hand and at bank and current asset investments.

SOUTH WEST COAST PATH ASSOCIATION

NOTES TO THE FINANCIAL STATEMENTS
FOR THE YEAR ENDED 31 DECEMBER 2023

19. STATEMENT OF FUNDS

STATEMENT OF FUNDS - CURRENT YEAR

	Balance at 1 January 2023 £	Income £	Expenditure £	Transfers in/out £	Balance at 31 December 2023 £
UNRESTRICTED FUNDS					
DESIGNATED FUNDS					
Promote and Protect Path	192,236	-	(63,420)	67,618	196,434
Capacity Building	38,952	-	(4,100)	(10,290)	24,562
Legacies	176,640	-	(75,813)	-	100,827
National Trails Alliance	13,929	-	(3,035)	-	10,894
	<u>421,757</u>	<u>-</u>	<u>(146,368)</u>	<u>57,328</u>	<u>332,717</u>
GENERAL FUNDS					
General Funds	<u>147,740</u>	<u>384,449</u>	<u>(286,864)</u>	<u>(41,143)</u>	<u>204,182</u>
TOTAL UNRESTRICTED FUNDS	<u>569,497</u>	<u>384,449</u>	<u>(433,232)</u>	<u>16,185</u>	<u>536,899</u>
RESTRICTED FUNDS					
Promote and Protect Path	74,673	5,000	(47,939)	639	32,373
Trail Partnership Project	-	40,990	(66,018)	25,028	-
National Trails Team	426	92,150	(95,099)	2,523	-
Donations	2,378	44,397	(25,967)	-	20,808
Outreach Projects	165	540	(468)	-	237
Natural England	18	248,450	(186,894)	(61,505)	69
Coast Path Connectors	-	94,036	(111,166)	17,130	-
	<u>77,660</u>	<u>525,563</u>	<u>(533,551)</u>	<u>(16,185)</u>	<u>53,487</u>
TOTAL OF FUNDS	<u>647,157</u>	<u>910,012</u>	<u>(966,783)</u>	<u>-</u>	<u>590,386</u>

SOUTH WEST COAST PATH ASSOCIATION

NOTES TO THE FINANCIAL STATEMENTS FOR THE YEAR ENDED 31 DECEMBER 2023

19. STATEMENT OF FUNDS (CONTINUED)

DESIGNATED FUNDS

Promote & Protect Path - Promotion & protection of the South West Coast Path, at the discretion of the Trustees.

Capacity Building - Match funding for Coast Path Connectors Project.

Legacies - Legacies designated for improving the Coast Path experience, to build the capacity and long term benefits of the Charity.

National Trails Alliance - Charity contribution to establish a new CIO (NTUK) promoting the UK National Trails.

RESTRICTED FUNDS

Promote & Protect Path - Improvements to the South West Coast Path, restricted by conditions from the donor or funder.

Trail Partnership Project - Delivery of the Trail Partnership Project, funded by its partners comprising 6 Highways Authorities & the National Trust.

National Trails Team - Hosting the South West Coast Path National Trails Team, funded by a grant from Natural England.

Donations - Specific improvements to the South West Coast Path, funded by donations from Appeals and Memorials.

Outreach Projects - Projects to support equity of access on the Coast Path for disadvantaged adults, funded by Active Devon and N Devon AONB.

Natural England - ECP signage, Coast Path improvements & Volunteer support, funded by grants from Natural England.

Coast Path Connectors – Our flagship project improving equity of access to the path and increasing our volunteer capacity, funded by National Lottery Heritage Fund.

SOUTH WEST COAST PATH ASSOCIATION

NOTES TO THE FINANCIAL STATEMENTS
FOR THE YEAR ENDED 31 DECEMBER 2023

19. STATEMENT OF FUNDS (CONTINUED)

STATEMENT OF FUNDS - PRIOR YEAR

	Balance at 1 January 2022 £	Income £	Expenditure £	Transfers in/out £	Balance at 31 December 2022 £
UNRESTRICTED FUNDS					
DESIGNATED FUNDS					
Promote and Protect Path	212,610	-	(60,417)	40,043	192,236
Capacity Building	41,500	-	(2,131)	(417)	38,952
Legacies	232,869	-	(56,229)	-	176,640
National Trails Alliance	35,324	-	(21,395)	-	13,929
	<u>522,303</u>	<u>-</u>	<u>(140,172)</u>	<u>39,626</u>	<u>421,757</u>
GENERAL FUNDS					
General Funds	<u>178,094</u>	<u>336,163</u>	<u>(309,784)</u>	<u>(56,733)</u>	<u>147,740</u>
TOTAL UNRESTRICTED FUNDS	<u>700,397</u>	<u>336,163</u>	<u>(449,956)</u>	<u>(17,107)</u>	<u>569,497</u>
RESTRICTED FUNDS					
Promote and Protect Path	8,013	70,694	(4,927)	893	74,673
Trail Partnership Project	3,021	35,000	(53,021)	15,000	-
National Trails Team	7,189	91,428	(98,191)	-	426
Donations	13,456	13,683	(24,761)	-	2,378
Outreach Projects	1,267	3,671	(5,570)	797	165
Natural England	-	83,704	(83,686)	-	18
Coast Path Connectors	-	10,548	(10,965)	417	-
	<u>32,946</u>	<u>308,728</u>	<u>(281,121)</u>	<u>17,107</u>	<u>77,660</u>
TOTAL OF FUNDS	<u>733,343</u>	<u>644,891</u>	<u>(731,077)</u>	<u>-</u>	<u>647,157</u>

SOUTH WEST COAST PATH ASSOCIATION

NOTES TO THE FINANCIAL STATEMENTS
FOR THE YEAR ENDED 31 DECEMBER 2023

20. ANALYSIS OF NET ASSETS BETWEEN FUNDS

ANALYSIS OF NET ASSETS BETWEEN FUNDS - CURRENT YEAR

	Unrestricted funds 2023 £	Restricted funds 2023 £	Total funds 2023 £
Current assets	672,099	82,533	754,632
Creditors due within one year	(122,245)	(27,141)	(149,386)
Creditors due in more than one year	(12,955)	(1,905)	(14,860)
TOTAL	536,899	53,487	590,386

ANALYSIS OF NET ASSETS BETWEEN FUNDS - PRIOR YEAR

	Unrestricted funds 2022 £	Restricted funds 2022 £	Total funds 2022 £
Current assets	708,772	81,230	790,002
Creditors due within one year	(123,728)	(1,190)	(124,918)
Creditors due in more than one year	(15,547)	(2,380)	(17,927)
TOTAL	569,497	77,660	647,157

21. RECONCILIATION OF NET MOVEMENT IN FUNDS TO NET CASH FLOW FROM OPERATING ACTIVITIES

	2023 £	2022 £
Net expenditure for the year (as per Statement of Financial Activities)	(56,771)	(86,186)
ADJUSTMENTS FOR:		
Investment income received	(12,106)	(3,995)
Increase in stocks	(1,677)	(648)
Decrease/(increase) in debtors	38,888	(83,484)
Increase in creditors	21,401	28,981
NET CASH USED IN OPERATING ACTIVITIES	(10,265)	(145,332)

SOUTH WEST COAST PATH ASSOCIATION

NOTES TO THE FINANCIAL STATEMENTS
FOR THE YEAR ENDED 31 DECEMBER 2023

22. ANALYSIS OF CASH AND CASH EQUIVALENTS

	2023 £	2022 £
Cash in hand	151,171	154,302
TOTAL CASH AND CASH EQUIVALENTS	151,171	154,302

23. ANALYSIS OF CHANGES IN NET DEBT

	At 1 January 2023 £	Cash flows £	At 31 December 2023 £
Cash at bank and in hand	154,302	(3,131)	151,171
Liquid investments	513,030	4,972	518,002
	667,332	1,841	669,173

24. PENSION COMMITMENTS

The Charity operates a defined contribution pension scheme. The assets of the scheme are held separately from those of the group in an independently administered fund. The pension cost charge represents contributions payable by the Charity to the fund and amounted to £28,568 (2022: £18,050). Contributions totalling £2,633 (2022: £2,313) were payable to the fund at the balance sheet date and are included in creditors

25. OPERATING LEASE COMMITMENTS

At 31 December 2023 the Charity had commitments to make future minimum lease payments under non-cancellable operating leases as follows:

	2023 £	2022 £
Not later than 1 year	30,537	30,537
Later than 1 year and not later than 5 years	13,439	43,004
	43,976	73,541

26. MEMBERS' LIABILITY

Each member of the Charity undertakes to contribute to the assets of the Charity in the event of it being wound up while he/she is a member, or within one year after he/she ceases to be a member, such amount as may be required, not exceeding £Nil for the debts and liabilities contracted before he/she ceases to be a member.

SOUTH WEST COAST PATH ASSOCIATION**NOTES TO THE FINANCIAL STATEMENTS
FOR THE YEAR ENDED 31 DECEMBER 2023**

27. RELATED PARTY TRANSACTIONS

None of the Trustees receive remuneration or other benefits from their work with the Charity. Trustees are required to complete an annual 'declaration of interests' as well as stating any conflicts of interests before the start of each Board of Trustees meetings. As such, no related party transactions occurred in the year.

28. CONTROLLING PARTY

The ultimate controlling party is the Trustees. No individual member has ultimate control.

South West Coast Path Association
Registered charity no: 1163422

