



Community
Circles

Community Circles creates
opportunities for people to come
together to have better and more
connected lives

**End of year report and accounts
March 2023**

Reference and administrative information

The charity is registered with the Charities Commission, registration number 1163149

Registered address 1 Church View, Knutsford WA16 6DQ

Trustees

Helen Sanderson MBE (Chair)

Michelle Livesley

Emily McArdle

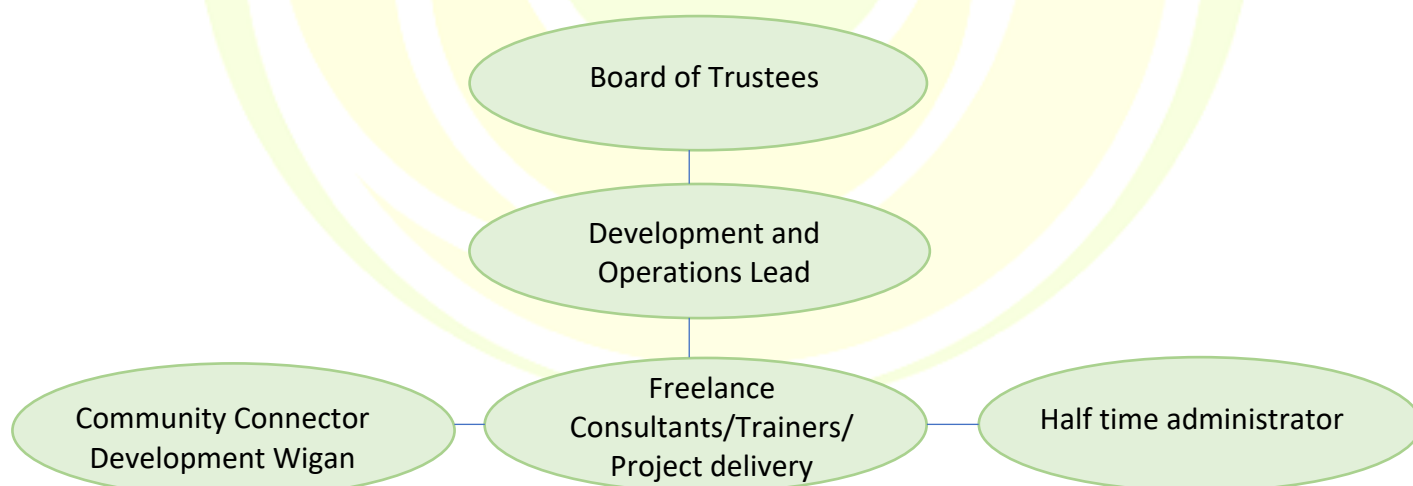
Ben Rosamond

Independent Examiner

The charity's independent examiner is James Wheelan FCCA of James Wheelan Accountancy, Minshull House, 67 Wellington Road North, Stockport SK4 2LP

Structure, Governance and Management

Community Circles is constituted as a body corporate under part 11 of the Charities Act 2011. The board of Trustees meet together with the operational team monthly to ensure we are working towards our charitable purpose and following through on our strategic objectives. Community Circles operates as a self managed team with roles, processes and structures to support our strategic objectives and operations as detailed in the diagram below



Objectives and Activities

The purpose of Community Circles is to create opportunities for people to come together to have better and more connected lives.

To promote social inclusion for the public benefit by preventing people from becoming socially excluded, relieving the needs of those people who are socially excluded, relieving the needs of those people who are socially excluded and assisting them to integrate into society. For the purpose of this clause 'socially excluded' means being excluded from society, or parts of society, as a result of one or more of the following factors: unemployment; financial hardship; youth or old age; ill health (physical or mental); substance abuse or dependency including alcohol and drugs; discrimination on the grounds of sex, race, disability, ethnic origin, religion, belief, creed, sexual orientation or gender re-assignment; poor educational or skills attainment; relationship and family breakdown; poor housing or skills attainment; relationship and family breakdown; poor housing (that is housing that does not meet basic habitual standards); crime (either as a victim of a crime or as an offender rehabilitating into society).

Community Circles partners with a variety of health and social care organisations and local authorities to provide training and consultancy in circles of support, community and person centred approaches to help people stay connected to the people, places and interests that matter to them and supports their wellbeing.

Achievements and Performance

Ashton Circle

Ashton Circle is led by Connector Becky Noy, supporting people to come together around shared interests, creating opportunities for friendships to flourish. The number of local members of Ashton Circle was affected by the pandemic and resuming our face to face support meant reaching out to new members. As a charity we agreed that our focus would be to connect with anyone of any age living in Ashton, rather than our previous focus of working alongside older people. In order to make a difference to the people living in Ashton, to deliver on our purpose and to consider the sustainability of shared interest groups, we have been developing new ideas for community connections. Through guidance from Trustees we have been developing the Two Hour Club, rethinking volunteering as a way of investing in your own wellbeing; developing Small Sparks grants to support local people with their ideas for community connections and exploring Business 100 for developing reciprocal relationships with local businesses and Community Circles.

Circles Connected

Circles Connected was developed in response to the pandemic, supporting people to connect online when face to face groups wasn't possible. We provided a variety of content through our Facebook Group, including video content to support people with hobbies and interests, live Zoom events to support conversation and connection and a variety of Facebook posts. The Facebook Group responded to the wishes of our members, providing

content which reflected peoples interests and gathering members feedback. In response to our members wishes, we have continued to provide some online sessions including Action for Happiness course, watercolour class, poetry group and coffee club.

St Patrick's Kilkenny

Community Circles have provided training and support for St Patrick's staff to embed circles of support, supporting team members with understanding the purpose and process of circles, skills in facilitating a circle and developing creative ideas for people to have great lives.

Making Space

Community Circles have been working alongside colleagues from Making Space extra care services, providing training and coaching to explore opportunities for people to connect with each other around shared interests and explore opportunities for value and purpose through contributions. Community Circles have been supporting Making Space colleagues with a new service to support carers, ensuring that events and activities are driven by the wishes of carers and working alongside colleagues in extra care services helping people do more of whatever matters to them.

PossAbilities

Community Circles has continued with their partnership with PossAbilities for a second year, providing a variety of bespoke training and support to colleagues including circles of support, connecting people around shared interests, exploring purpose and values and community contributions.

SOS Kilkenny

Community Circles has provided training and coaching support to SOS colleagues in person centred and community approaches and embedding these approaches with the people they support. We have also provided support in promoting person centred ways of working through creating animates and publicity materials to share across the organisation.

Age UK Rotherham

Community Circles has provided training and coaching to Age UK colleagues and local partners to use the Community Circles model to develop Wellbeing Circles for older people. Community Circles has supported training for volunteers and developed tools and resources to support the development of Wellbeing Circles.

Mencap

Community Circles has continued with their partnership with Mencap for a second year, providing training and ongoing coaching to a range of Mencap staff in person centred and community approaches, including volunteering projects, supporting opportunities for people to connect and contribute and supporting young people at risk of not being in education or employment.

The RSA

Community Circles received funding from The RSA to develop their offer working in Ashton, reaching a wider audience and working alongside businesses to support employees wellbeing. Funding allowed us to support 10 Small Sparks ideas and set up new groups based on what matters to people and creating opportunities for connections and contributions.

Lottery

Community Circles received funding from the National Lottery to develop Ashton Circles through our learning supporting older people to live well in their homes, responding to loneliness and isolation. The funding allowed us to host weekly events such as Public Living rooms in local venues bring different generations together, increasing the wellbeing of isolated people and build connections in the Ashton area.

Communications and Influence

Newsletter – we have continued to share our national quarterly newsletter and have a monthly newsletter from Ashton Circle

TLAP blogs and animates – we were asked by Tlap to contribute resources to share how Community Circles can support personalisation within registered services. We have contributed a blog and range of animates and are supporting Tlap's Rainbow Network of innovative community approaches.

Contributing to ADASS East community approaches – Cath has contributed to ADASS programme of innovations through webinars, online conferences and recorded interviews to promote Community Circles.

Financial review

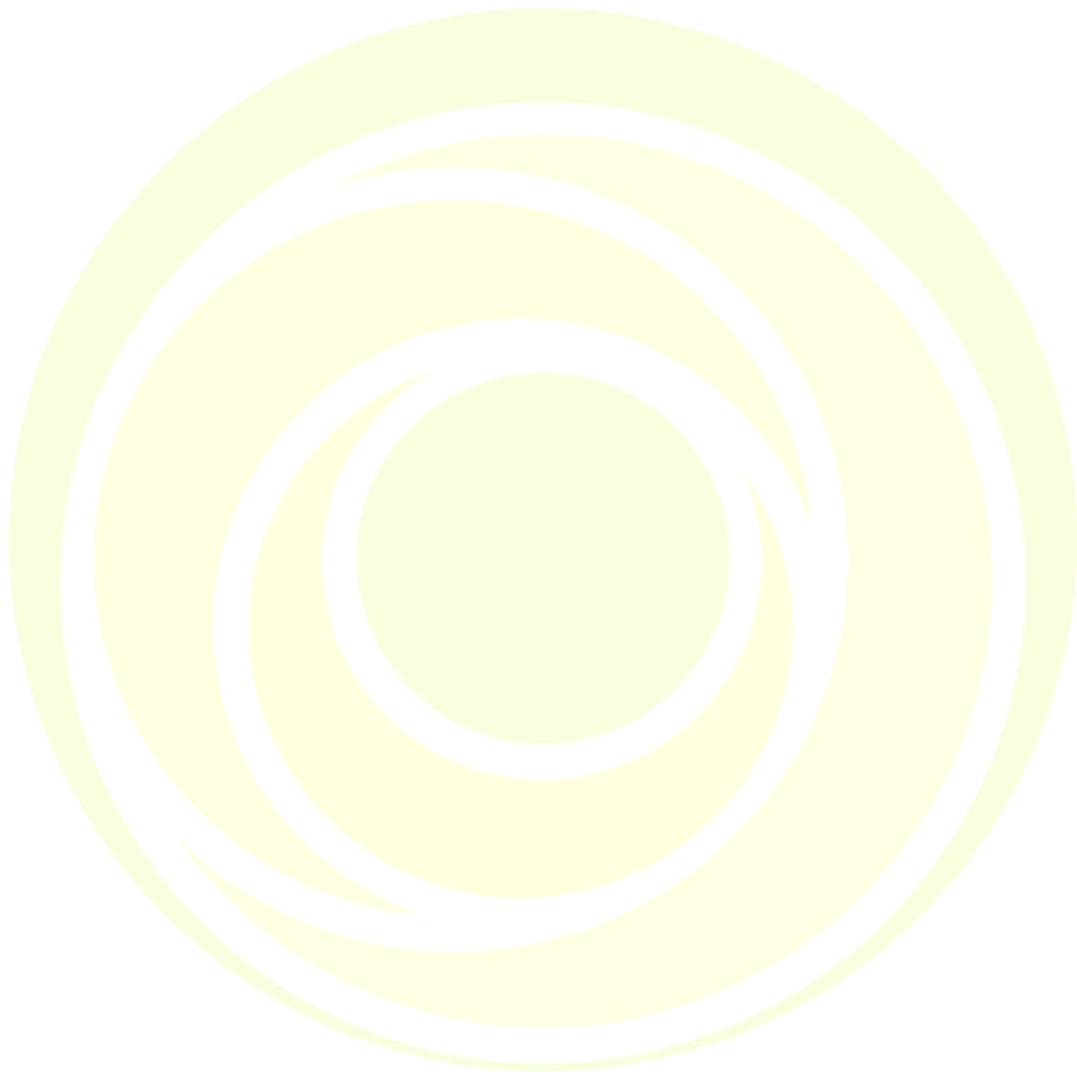
The attached receipts and payments accounts show the current state of the finances, which the Trustees considers to be acceptable. Total incoming resources were £54,055 (2022 - £107,980) and total outgoing payments amounted to £96,526 (2022 - £140,534) the net expenditure for the year was £42,470 (net expenditure 2022 - £32,554). Restricted funds carried forward amounted to £153 (2022 - £8,860), Unrestricted funds carried fund amounted to £11,719 (2022: 45,482).

Reserves Policy

In light of the main risks to the Charity the Trustees have made a decision that the Charity should keep funds at a suitable level in order to meets its ongoing liabilities.

Public benefit

The trustees confirm that they have referred to the Charity Commission's general guidance on public benefit when reviewing the Charity's aims and objectives and in planning the future activities of the Charity, These are shown above in the section 'Objectives and activities'.



INDEPENDENT EXAMINER'S REPORT TO THE TRUSTEES OF

COMMUNITY CIRCLES

CHARITY REGISTERED NO.1163149

I report to the charity trustees on my examination of the receipts and payments accounts of the charity for the year ended 31 March 2023 which are set out on pages 7 to 9.

Respective responsibilities of trustees and examiner

The charity's trustees are responsible for the preparation of the accounts in accordance with the requirements of the Charities Act 2011 ("the Act").

The charity's trustees consider that an audit is not required for this year under section 144 of the Act and that an independent examination is needed.

It is my responsibility to:

- examine the accounts under section 145 of the Charities Act,
- to follow the applicable Directions given by the Charity Commission (under section 145(5)(b) of the Act, and
- to state whether particular matters have come to my attention

Basis of independent examiner's statement

My examination was carried out in accordance with general Directions given by the Charity Commission. An examination includes a review of the accounting records kept by the charity and a comparison of the accounts presented with those records. It also includes consideration of any unusual items or disclosures in the accounts, and seeking explanations from the trustees concerning any such matters. The procedures undertaken do not provide all the evidence that would be required in an audit, and consequently no opinion is given as to whether the accounts present a 'true and fair' view and the report is limited to those matters set out in the statement below.

Independent examiners' statement

In connection with my examination, no material matters have come to my attention which gives me cause to believe that in, any material respect:

- accounting records were not kept in accordance with section 130 of the Charities Act or
- the accounts do not accord with the accounting records

I have no concerns and have come across no other matters in connection with the examination to which attention should be drawn in order to enable a proper understanding of the accounts to be reached.

James Wheelan

James Wheelan FCCA
James Wheelan Accountancy Limited
Chartered Certified Accountants
Minshull House,
67 Wellington Road North,
Stockport, SK4 2LP

Date: 10/08/2023

COMMUNITY CIRCLES
CHARITY REGISTERED NO.1163149

RECEIPTS AND PAYMENTS
FOR THE YEAR ENDED 31ST MARCH 2023

	Unrestricted Funds	Restricted Funds	Total 2023	Total 2022
Receipts				
Donations, legacies and grants	-	19,470	19,470	49,204
Fees for charitable services	34,585	-	34,585	58,776
Total receipts	34,585	19,470	54,055	107,980
Payments				
Wages and National Insurance	56,346	16,828	73,174	104,201
Pension contributions	3,456	-	3,456	4,816
Insurance	1,644	-	1,644	1,644
Printing, postage, stationery and computer supplies	1,965	172	2,137	13,507
Consultancy fees	2,000	-	2,000	13,188
Professional fees	1,250	-	1,250	1,410
Travel	-	8,000	8,000	72
Telephone, internet and postage	1,021	-	1,021	1,096
Bank interest and charges	-	-	-	-
Grants payable	-	3,177	3,177	460
Other expenditure	667	-	667	140
Sub total	68,349	28,177	96,526	140,534
Asset and investment purchases	-	-	-	-
Total payments	68,349	28,177	96,526	140,534
Net of receipts/(payments)	(33,763)	(8,707)	(42,470)	(32,554)
Transfers between funds	-	-	-	-
Cash funds brought forward at 1 April 2022	45,482	8,860	54,342	86,897
Cash funds carried forward at 31 March 2023	11,719	153	11,872	54,342

COMMUNITY CIRCLES
CHARITY REGISTERED NO.1163149

STATEMENT OF ASSETS AND LIABILITIES AS AT 31ST MARCH 2023

	Unrestricted Funds	Restricted Funds	Total 2023	Total 2022
CASH FUNDS				
Treasurers account	11,719	153	11,872	54,342
Total cash funds	11,719	153	11,872	54,342
ASSETS RETAINED FOR THE CHARITIES OWN USE				
Computers and other equipment	-	-	-	454
Amounts owed	-	-	-	-
Total	-	-	-	454
LIABILITIES				
Accruals	600	-	600	600
Other taxes	157	-	157	1,124
Total liabilities	757	-	757	1,724

Approved by the Management Committee and signed on its behalf

H Sanderson

..... Dr H Sanderson - Chair

10/08/2023

..... Date

COMMUNITY CIRCLES
CHARITY REGISTERED NO.1163149

NOTES TO THE FINANCIAL STATEMENTS
FOR THE YEAR ENDED 31ST MARCH 2023

1. RELATED PARTY TRANSACTIONS

The Charity has transacted with related parties as follows:-

Helen Sanderson Ltd, a company under the control of Dr H Sanderson (CEO and founder), granted £Nil (2022: £38,180) to Community Circles. In the current year £60 was sent to the company in respect of expenses incurred.

Helen Sanderson Ltd, a company under the control of Dr H Sanderson (CEO and founder), paid £Nil (2022: £5,349) to Community Circles in respect of a partnership with Touched By Olivia Foundation Limited.

Helen Sanderson Ltd, a company under the control of Dr H Sanderson (CEO and founder), was paid £Nil in respect of salary recharges (2022: £2,663).

Trustees, Dr H Sanderson (CEO and founder), Michelle Livesley, Emily McArdle and Ben Rosamond were each paid £2,000 in respect of travel expenses to Australia in order to launch Community Circles in the Australian market in partnership with Touched by Olivia.