

# COMMUNITY CIRCLES

England & Wales · Charity number 1163149

## Details

---

**Status** Registered

**Legal form** CIO

**Registered** 2015-08-14

**Register** [View on the Charity Commission register](#)

## Contact

---

**Address** 1 Church View  
Knutsford  
Cheshire  
WA16 6DQ

**Phone** 07958031419

**Email** [helen@community-circles.co.uk](mailto:helen@community-circles.co.uk)

**Website** [www.community-circles.co.uk](http://www.community-circles.co.uk)

## Activities

---

**Objects:** TO PROMOTE SOCIAL INCLUSION FOR THE PUBLIC BENEFIT BY PREVENTING PEOPLE FROM BECOMING SOCIALLY EXCLUDED, RELIEVING THE NEEDS OF THOSE PEOPLE WHO ARE SOCIALLY EXCLUDED AND ASSISTING THEM TO INTEGRATE INTO SOCIETY.FOR THE PURPOSE OF THIS CLAUSE 'SOCIALLY EXCLUDED' MEANS BEING EXCLUDED FROM SOCIETY, OR PARTS OF SOCIETY, AS A RESULT OF ONE OR MORE OF THE FOLLOWING FACTORS: UNEMPLOYMENT; FINANCIAL HARDSHIP; YOUTH OR OLD AGE; ILL HEALTH (PHYSICAL OR MENTAL); SUBSTANCE ABUSE OR DEPENDENCY INCLUDING ALCOHOL AND DRUGS; DISCRIMINATION ON THE GROUNDS OF SEX, RACE, DISABILITY, ETHNIC ORIGIN, RELIGION, BELIEF, CREED, SEXUAL ORIENTATION OR GENDER RE-ASSIGNMENT; POOR EDUCATIONAL OR SKILLS ATTAINMENT; RELATIONSHIP AND FAMILY BREAKDOWN; POOR HOUSING (THAT IS HOUSING THAT DOES NOT MEET BASIC HABITABLE STANDARDS); CRIME (EITHER AS A VICTIM OF A CRIME OR AS AN OFFENDER REHABILITATING INTO SOCIETY)

**Activities:** Creating Community Circles to support people

## Classification

---

- **How:** Provides Services
- **What:** General Charitable Purposes
- **Who:** Elderly/old People, People With Disabilities, The General Public/mankind

## Geography

---

- City Of London
- Doncaster
- Hertfordshire
- Isle Of Anglesey
- Lancashire
- Rochdale
- Stockport
- Wigan

## Finances

---

Period end	Income	Expenditure	Assets	Employees
2025-03-31	£2,816	£11,754	-	-
2024-03-31	£12,336	£8,973	-	-
2023-03-31	£54,055	£96,526	-	-
2022-03-31	£107,980	£140,074	-	-
2021-03-31	£99,274	£153,855	-	-

## Trustees

---

Name	Role	Appointed
Emily Rachel Victoria McArdle	Chair	2021-03-03
Ben Rosamond		2021-03-03
Dr HELEN SANDERSON		2016-04-01
Dr Helen Sanderson		2016-04-01
Michelle Anne Livesley		2021-03-03

**COMMUNITY CIRCLES**

England & Wales - Charity number 1163149

---

# Accounts

---



Community  
Circles

Community Circles creates  
opportunities for people to come  
together to have better and more  
connected lives

**End of year report  
and accounts  
December 2025**

## Reference and Administrative Information

**Charity Registration Number:** 1163149

**Registered Address:** 1 Church View, Knutsford WA16 6DQ

### Trustees

- Helen Sanderson MBE
- Michelle Livesley (Secretary)
- Emily McArdle (Chair)
- Ben Rosamond

### Independent Examiner

James Wheelan FCCA  
James Wheelan Accountancy  
Minshull House, 67 Wellington Road North  
Stockport SK4 2LP

---

## Structure, Governance and Management

Community Circles is constituted as a body corporate under part 11 of the Charities Act 2011. The board of Trustees meet monthly to ensure we are working towards our charitable purpose and following through on our strategic objectives. Community Circles operates as a self-managed team to support our strategic objectives and operations.

---

## Objectives and Activities

The purpose of Community Circles is to create opportunities for people to come together to have better and more connected lives.

To promote social inclusion for the public benefit by preventing people from becoming socially excluded, relieving the needs of those people who are socially excluded, and assisting them to integrate into society. For the purpose of this clause 'socially excluded' means being excluded from society, or parts of society, as a result of one or more of the following factors: unemployment; financial hardship; youth or old age; ill health (physical or mental); substance abuse or dependency including alcohol and drugs; discrimination on the grounds of sex, race, disability, ethnic origin, religion, belief, creed, sexual orientation or gender re-assignment; poor educational or skills attainment; relationship and family breakdown; poor housing (that is housing that does not meet basic habitable standards); crime (either as a victim of a crime or as an offender rehabilitating into society).

---

## Achievements and Performance

### Overview

In 2025, the charity continued its mission through two complementary strands of activity: the Rhosneigr Music Festival and the development of a new social enterprise initiative through gin production and sales.

### Rhosneigr Music Festival

The Rhosneigr Music Festival was a two-day community event designed to promote musical education and performance opportunities for young people and the wider local community. The festival combined structured learning, public performances and community engagement activities across several village venues. Its purpose was to strengthen local arts provision, create accessible routes into music for young people, and support local businesses through partnership working. A core element of the programme was a six-week music course for eight young people, which led to several live performances during the festival. The course focused on developing practical skills in contemporary music, songwriting and performance, with approximately 80% of the content delivered through hands-on music-making. Participants were supported by experienced professional musicians. The two-day festival featured a mixture of original music and cover performances, delivered by young participants, local musicians and invited bands. Events took place across several community venues, including the Church, Starvation, Blue Olive, Y Morfa and Wills Bar. A central organising principle was to stagger performance times, allowing visitors to follow a walking tour between venues without conflicting events. This approach maximised attendance, encouraged movement around the village and supported local hospitality businesses. Community involvement was integral to the festival's design. The programme included a music-themed pub quiz and an Open Mic session. The festival used a co-funding model for live bands, with participating venues contributing 50% of the performance cost and Community Circles covering the remaining 50%. This approach reduced financial barriers for smaller venues while ensuring high-quality performances for audiences. The inclusion of established acts, such as Tequila Slammers, alongside emerging musicians broadened audience appeal and created an inclusive programme.

The charitable purpose of the festival centred on advancing education in music and the performing arts and promoting community cohesion through cultural activity. Public benefit was demonstrated through free access to performances, skills development for young people, increased cultural participation and economic support for local businesses during the event.

Overall, the Rhosneigr Music Festival became a valuable community asset, providing meaningful creative opportunities for young people while enriching the cultural life of the village. It has been requested that it continues into 2026.

### Social Enterprise Development

During 2024-25, the charity invested in developing a gin-related social enterprise. This initiative involved product development, branding, packaging and initial sales, with revenues being reinvested to support the charity's core mission of social inclusion. The enterprise generated £2,816 in sales during the year and represents a sustainable income stream to support future charitable activities.

# Financial Review

## Summary

The attached receipts and payments accounts show the current state of the finances, which the Trustees consider to be acceptable. Total incoming resources were £2,816 (2024: £12,336) and total outgoing payments amounted to £11,754 (2024: £8,973). The net expenditure for the year was £8,938 (2024: net income £3,363).

Unrestricted funds carried forward amounted to £6,297 (2024: £15,235).

## Commentary

---

The decrease in incoming resources reflects a transition year as the charity moved from grant-dependent funding to developing sustainable income through social enterprise. Sales income of £2,816 was generated through the gin initiative, representing the first year of this new revenue stream.

Total expenditure of £11,754 primarily comprised:

- Cost of goods and materials (£10,566) relating to gin production
- Professional fees (£491) for accountancy and consultancy support
- Computer and software costs (£957)
- Business insurance (£261)
- Other operational expenses (£479)

The expenditure reflects significant investment in product development, inventory and branding for the social enterprise, which is expected to generate increased returns in future years. The Trustees view this investment as essential to building a sustainable funding model that will reduce reliance on external grants.

## Reserves Policy

In light of the main risks to the Charity, the Trustees have made a decision that the Charity should keep funds at a suitable level in order to meet its ongoing liabilities. The current reserve level of £6,297 provides adequate working capital for ongoing operations while the social enterprise develops.

## Public Benefit

The trustees confirm that they have referred to the Charity Commission's general guidance on public benefit when reviewing the Charity's aims and objectives and in planning the future activities of the Charity. These are shown above in the section 'Objectives and activities'.

The charity has delivered public benefit through:

- Providing free music education and performance opportunities to young people
- Creating community cohesion through cultural events
- Supporting local businesses through partnership working
- Developing sustainable income streams to ensure long-term delivery of charitable objectives

## COMMUNITY CIRCLES

CHARITY REGISTERED NO. 1163149  
RECEIPTS AND PAYMENTS  
FOR THE YEAR ENDED 31ST MARCH 2025

	Unrestricted Funds	Restricted Funds	Total 2025	Total 2024
<b>Receipts</b>				
Donations, legacies and grants	-	-	-	12,336
Sales - Products	2,816	-	2,816	-
<b>Total receipts</b>	<b>2,816</b>	<b>-</b>	<b>2,816</b>	<b>12,336</b>
<b>Payments</b>				
Cost of Sales - Goods	5,578	-	5,578	-
Cost of Sales - Materials	4,738	-	4,738	-
Packaging Materials	250	-	250	-
Computer & Software	957	-	957	-
Accountancy Fees	300	-	300	-
Consultancy & Professional Fees	191	-	191	3,071
Business Insurance	261	-	261	255
Other expenses	479	-	479	5,647
<b>Total payments</b>	<b>11,754</b>	<b>-</b>	<b>11,754</b>	<b>8,973</b>
<b>Net of receipts/(payments)</b>	<b>(8,938)</b>	<b>-</b>	<b>(8,938)</b>	<b>3,363</b>
Transfers between funds	-	-	-	-
Cash funds brought forward at 1 April 2024	15,235	-	15,235	11,872
<b>Cash funds carried forward at 31 March 2025</b>	<b>6,297</b>	<b>-</b>	<b>6,297</b>	<b>15,235</b>

### STATEMENT OF ASSETS AND LIABILITIES AS AT 31ST MARCH 2025

	Unrestricted Funds	Restricted Funds	Total 2025	Total 2024
<b>CASH FUNDS</b>				
Bank Account	9,973	-	9,973	15,235
<b>Total cash funds</b>	<b>9,973</b>	<b>-</b>	<b>9,973</b>	<b>15,235</b>
<b>ASSETS RETAINED FOR THE CHARITY'S OWN USE</b>				
Office equipment and IT - Cost	44	-	44	-
Trade Debtors	218	-	218	-
<b>Total fixed assets and debtors</b>	<b>262</b>	<b>-</b>	<b>262</b>	<b>-</b>
<b>LIABILITIES</b>				
VAT Liability	280	-	280	-
VAT on Sales - Holding Account	29	-	29	-
Accruals	3,629	-	3,629	360
<b>Total liabilities</b>	<b>3,938</b>	<b>-</b>	<b>3,938</b>	<b>360</b>
<b>Net assets</b>	<b>6,297</b>	<b>-</b>	<b>6,297</b>	<b>14,875</b>

## COMMUNITY CIRCLES

CHARITY REGISTERED NO. 1163149  
NOTES TO THE FINANCIAL STATEMENTS  
FOR THE YEAR ENDED 31ST MARCH 2025

### 1. ACCOUNTING POLICIES

**Basis of preparation:** These accounts have been prepared on a receipts and payments basis in accordance with the Charities Act 2011.

**Income recognition:** Income is recognised when received. Sales income represents amounts received from gin sales during the year.

**Expenditure recognition:** Expenditure is recognised when paid. Cost of sales includes the cost of gin production, materials and packaging.

### 2. RELATED PARTY TRANSACTIONS

The Charity has transacted with related parties as follows:

Helen Sanderson Ltd, a company under the control of Dr H Sanderson (Chair and Trustee), provided support services to the charity during the year. Transactions with related parties were conducted at arm's length and in the charity's best interests.

Emily McArdle, a Trustee, made donations to the charity totalling £186 during the year.

### 3. CHANGE IN ACTIVITY

The year ended 31st March 2025 represents a transitional period for the charity. The organisation moved from grant-dependent funding to developing sustainable income through social enterprise activity, specifically gin production and sales. Initial investment in this enterprise resulted in net expenditure during the year, with the expectation of improved returns as the enterprise matures.

---

**Approved by the Board of Trustees and signed on its behalf:**

*E.R.V. McArdle*

Mrs E McArdle - Chair

19/12/2025

**COMMUNITY CIRCLES**

England & Wales - Charity number 1163149

---

# Accounts

---



Community  
Circles

Community Circles creates  
opportunities for people to come  
together to have better and more  
connected lives

**End of year report and accounts  
March 2024**

## Reference and administrative information

The charity is registered with the Charities Commission, registration number 1163149

Registered address 1 Church View, Knutsford WA16 6DQ

## Trustees

Helen Sanderson MBE (Chair)

Michelle Livesley

Emily McArdle

Ben Rosamond

## Independent Examiner

The charity's independent examiner is James Wheelan FCCA of James Wheelan Accountancy, Minshull House, 67 Wellington Road North, Stockport SK4 2LP

## Structure, Governance and Management

Community Circles is constituted as a body corporate under part 11 of the Charities Act 2011. The board of Trustees meet monthly to ensure we are working towards our charitable purpose and following through on our strategic objectives. Community Circles operates as a self-managed team to support our strategic objectives and operations.

## Objectives and Activities

The purpose of Community Circles is to create opportunities for people to come together to have better and more connected lives.

To promote social inclusion for the public benefit by preventing people from becoming socially excluded, relieving the needs of those people who are socially excluded, relieving the needs of those people who are socially excluded and assisting them to integrate into society. For the purpose of this clause 'socially excluded' means being excluded from society, or parts of society, as a result of one or more of the following factors: unemployment; financial hardship; youth or old age; ill health (physical or mental); substance abuse or dependency including alcohol and drugs; discrimination on the grounds of sex, race, disability, ethnic origin, religion, belief, creed, sexual orientation or gender re-assignment; poor educational or skills attainment; relationship and family breakdown; poor housing or skills attainment; relationship and family breakdown; poor housing (that is housing that does not meet basic habitual standards); crime (either as a victim of a crime or as an offender rehabilitating into society).

Community Circles partners with a variety of health and social care organisations and local authorities to provide training and consultancy in circles of support, community and person-centred approaches to help people stay connected to the people, places and interests that matter to them and supports their wellbeing.

## Achievements and Performance

### Lottery Funding

Funded by the National Lottery Community Circles continued with the project in Ashton to develop Ashton Circles through our learning supporting older people to live well in their homes, responding to loneliness and isolation. The funding allowed us to host weekly events such as Public Living rooms in local venues bring different generations together, increasing the wellbeing of isolated people and build connections in the Ashton area.

### Communications and Influence

We have continued to share our learning through our website and social media.

## Financial review

The attached receipts and payments accounts show the current state of the finances, which the Trustees considers to be acceptable. Total incoming resources were £54,055 (2022 - £107,980) and total outgoing payments amounted to £96,526 (2022 - £140,534) the net expenditure for the year was £42,470 (net expenditure 2022 - £32,554). Restricted funds carried forward amounted to £153 (2022 - £8,860), Unrestricted funds carried fund amounted to £11,719 (2022: 45,482).

### Reserves Policy

In light of the main risks to the Charity the Trustees have made a decision that the Charity should keep funds at a suitable level in order to meets its ongoing liabilities.

## Public benefit

The trustees confirm that they have referred to the Charity Commission's general guidance on public benefit when reviewing the Charity's aims and objectives and in planning the future activities of the Charity, these are shown above in the section 'Objectives and activities'.

**COMMUNITY CIRCLES**  
**CHARITY REGISTERED NO.1163149**

**RECEIPTS AND PAYMENTS**  
**FOR THE YEAR ENDED 31ST MARCH 2024**

	Unrestricted Funds	Restricted Funds	Total 2024	Total 2023
<b>Receipts</b>				
Donations, legacies and grants	12,336	-	12,336	19,470
Fees for charitable services	-	-	-	34,585
<b>Total receipts</b>	<b>12,336</b>	<b>0</b>	<b>12,336</b>	<b>54,055</b>
<b>Payments</b>				
Wages and National Insurance	3,918	-	3,918	73,174
Pension contributions	428	-	428	3,456
Insurance	255	-	255	1,644
Printing, postage, stationery and computer supplies	1,147	153	1,300	2,137
Consultancy fees	-	-	-	2,000
Professional fees	3,071	-	3,071	1,250
Travel	-	-	-	8,000
Telephone, internet and postage	-	-	-	1,021
Bank interest and charges	-	-	-	-
Grants payable	-	-	-	3,177
Other expenditure	-	-	-	667
<b>Sub total</b>	<b>8,820</b>	<b>153</b>	<b>8,973</b>	<b>96,526</b>
<b>Asset and investment purchases</b>	<b>-</b>	<b>-</b>	<b>-</b>	<b>-</b>
<b>Total payments</b>	<b>8,820</b>	<b>153</b>	<b>8,973</b>	<b>96,526</b>
<b>Net of receipts/(payments)</b>	<b>3,516</b>	<b>(153)</b>	<b>3,363</b>	<b>(42,471)</b>
Transfers between funds	-	-	-	-
Cash funds brought forward at 1 April 2022	11,719	153	11,872	54,342
Cash funds carried forward at 31 March 2023	<b>15,235</b>	<b>-</b>	<b>15,235</b>	<b>11,870</b>

**COMMUNITY CIRCLES**  
**CHARITY REGISTERED NO.1163149**

**STATEMENT OF ASSETS AND LIABILITIES AS AT 31ST MARCH 2024**

	Unrestricted Funds	Restricted Funds	Total 2024	Total 2023
<b>CASH FUNDS</b>				
Treasurers account	15,235	-	15,235	11,732
	<hr/>			
<b>Total cash funds</b>	<b>15,235</b>	<b>-</b>	<b>15,235</b>	<b>11,732</b>
<b>ASSETS RETAINED FOR THE CHARITIES OWN USE</b>				
-	-	-	-	-
Amounts owed	-	-	-	-
	<hr/>			
<b>Total</b>	<b>-</b>	<b>-</b>	<b>-</b>	<b>-</b>
<b>LIABILITIES</b>				
Accruals	360	-	360	600
	<hr/>			
<b>Total liabilities</b>	<b>360</b>	<b>-</b>	<b>360</b>	<b>600</b>

Approved by the Management Committee and signed on its behalf



..... Dr H Sanderson - Chair

28/01/2025

..... Date

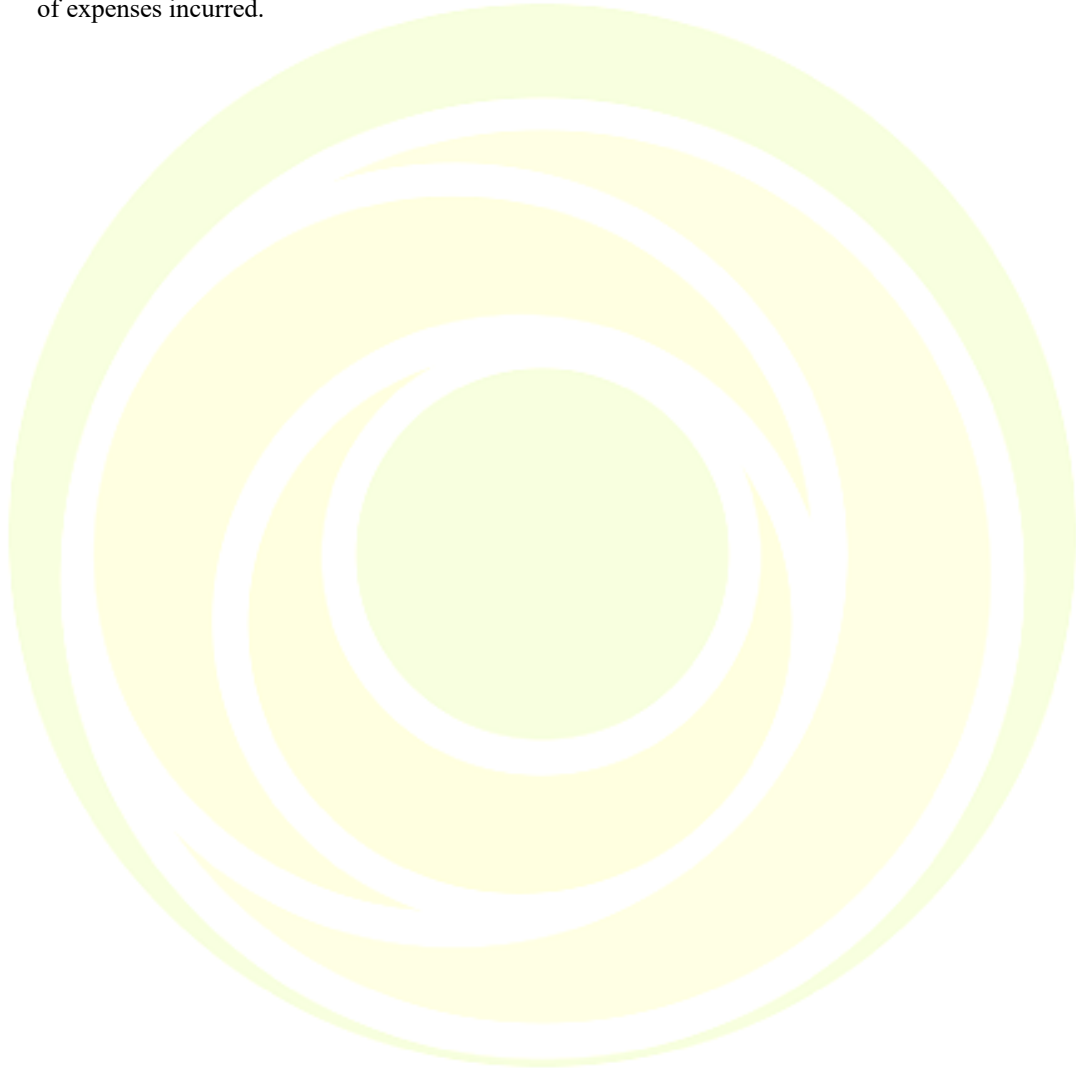
**COMMUNITY CIRCLES**  
**CHARITY REGISTERED NO.1163149**

**NOTES TO THE FINANCIAL STATEMENTS**  
**FOR THE YEAR ENDED 31ST MARCH 2024**

**1. RELATED PARTY TRANSACTIONS**

The Charity has transacted with related parties as follows:-

Helen Sanderson Ltd, a company under the control of Dr H Sanderson (CEO and founder), donated £12,288 (2023: £nil) to Community Circles. In the current year £2,231 was sent to the company in respect of expenses incurred.



**COMMUNITY CIRCLES**

England & Wales - Charity number 1163149

---

# Accounts

---



Community  
Circles

Community Circles creates  
opportunities for people to come  
together to have better and more  
connected lives

**End of year report and accounts  
March 2023**

## Reference and administrative information

The charity is registered with the Charities Commission, registration number 1163149  
Registered address 1 Church View, Knutsford WA16 6DQ

## Trustees

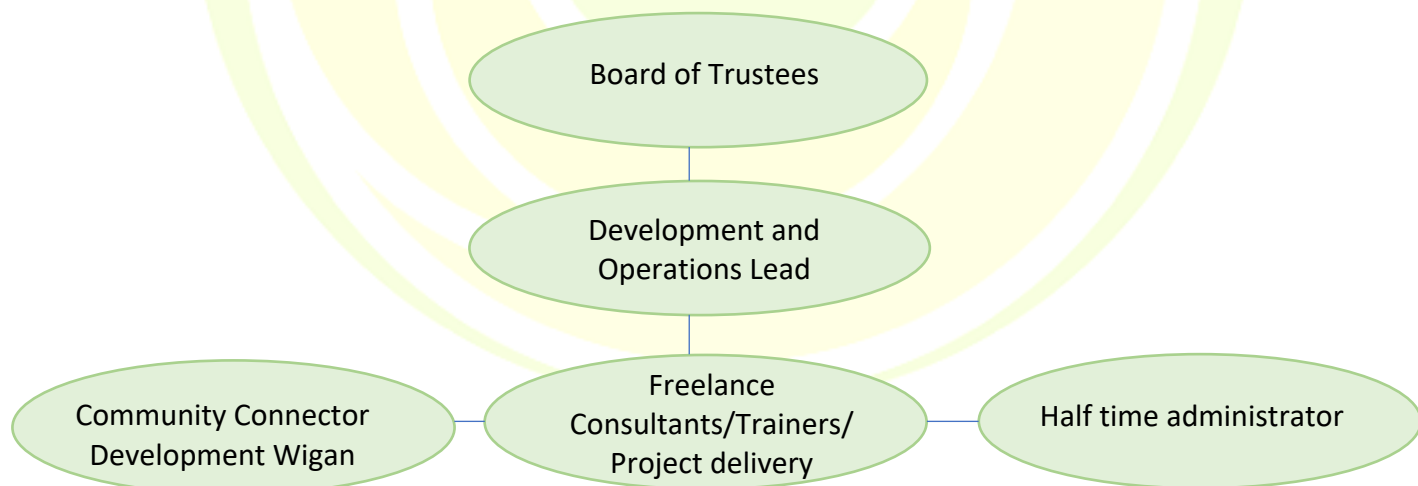
Helen Sanderson MBE (Chair)  
Michelle Livesley  
Emily McArdle  
Ben Rosamond

## Independent Examiner

The charity's independent examiner is James Wheelan FCCA of James Wheelan Accountancy, Minshull House, 67 Wellington Road North, Stockport SK4 2LP

## Structure, Governance and Management

Community Circles is constituted as a body corporate under part 11 of the Charities Act 2011. The board of Trustees meet together with the operational team monthly to ensure we are working towards our charitable purpose and following through on our strategic objectives. Community Circles operates as a self managed team with roles, processes and structures to support our strategic objectives and operations as detailed in the diagram below



## Objectives and Activities

The purpose of Community Circles is to create opportunities for people to come together to have better and more connected lives.

To promote social inclusion for the public benefit by preventing people from becoming socially excluded, relieving the needs of those people who are socially excluded, relieving the needs of those people who are socially excluded and assisting them to integrate into society. For the purpose of this clause 'socially excluded' means being excluded from society, or parts of society, as a result of one or more of the following factors: unemployment; financial hardship; youth or old age; ill health (physical or mental); substance abuse or dependency including alcohol and drugs; discrimination on the grounds of sex, race, disability, ethnic origin, religion, belief, creed, sexual orientation or gender re-assignment; poor educational or skills attainment; relationship and family breakdown; poor housing or skills attainment; relationship and family breakdown; poor housing (that is housing that does not meet basic habitual standards); crime (either as a victim of a crime or as an offender rehabilitating into society).

Community Circles partners with a variety of health and social care organisations and local authorities to provide training and consultancy in circles of support, community and person centred approaches to help people stay connected to the people, places and interests that matter to them and supports their wellbeing.

## Achievements and Performance

### Ashton Circle

Ashton Circle is led by Connector Becky Noy, supporting people to come together around shared interests, creating opportunities for friendships to flourish. The number of local members of Ashton Circle was affected by the pandemic and resuming our face to face support meant reaching out to new members. As a charity we agreed that our focus would be to connect with anyone of any age living in Ashton, rather than our previous focus of working alongside older people. In order to make a difference to the people living in Ashton, to deliver on our purpose and to consider the sustainability of shared interest groups, we have been developing new ideas for community connections. Through guidance from Trustees we have been developing the Two Hour Club, rethinking volunteering as a way of investing in your own wellbeing; developing Small Sparks grants to support local people with their ideas for community connections and exploring Business 100 for developing reciprocal relationships with local businesses and Community Circles.

### Circles Connected

Circles Connected was developed in response to the pandemic, supporting people to connect online when face to face groups wasn't possible. We provided a variety of content through our Facebook Group, including video content to support people with hobbies and interests, live Zoom events to support conversation and connection and a variety of Facebook posts. The Facebook Group responded to the wishes of our members, providing

content which reflected peoples interests and gathering members feedback. In response to our members wishes, we have continued to provide some online sessions including Action for Happiness course, watercolour class, poetry group and coffee club.

#### St Patrick's Kilkenny

Community Circles have provided training and support for St Patrick's staff to embed circles of support, supporting team members with understanding the purpose and process of circles, skills in facilitating a circle and developing creative ideas for people to have great lives.

#### Making Space

Community Circles have been working alongside colleagues from Making Space extra care services, providing training and coaching to explore opportunities for people to connect with each other around shared interests and explore opportunities for value and purpose through contributions. Community Circles have been supporting Making Space colleagues with a new service to support carers, ensuring that events and activities are driven by the wishes of carers and working alongside colleagues in extra care services helping people do more of whatever matters to them.

#### PossAbilities

Community Circles has continued with their partnership with PossAbilities for a second year, providing a variety of bespoke training and support to colleagues including circles of support, connecting people around shared interests, exploring purpose and values and community contributions.

#### SOS Kilkenny

Community Circles has provided training and coaching support to SOS colleagues in person centred and community approaches and embedding these approaches with the people they support. We have also provided support in promoting person centred ways of working through creating animates and publicity materials to share across the organisation.

#### Age UK Rotherham

Community Circles has provided training and coaching to Age UK colleagues and local partners to use the Community Circles model to develop Wellbeing Circles for older people. Community Circles has supported training for volunteers and developed tools and resources to support the development of Wellbeing Circles.

#### Mencap

Community Circles has continued with their partnership with Mencap for a second year, providing training and ongoing coaching to a range of Mencap staff in person centred and community approaches, including volunteering projects, supporting opportunities for people to connect and contribute and supporting young people at risk of not being in education or employment.

### The RSA

Community Circles received funding from The RSA to develop their offer working in Ashton, reaching a wider audience and working alongside businesses to support employees wellbeing. Funding allowed us to support 10 Small Sparks ideas and set up new groups based on what matters to people and creating opportunities for connections and contributions.

### Lottery

Community Circles received funding from the National Lottery to develop Ashton Circles through our learning supporting older people to live well in their homes, responding to loneliness and isolation. The funding allowed us to host weekly events such as Public Living rooms in local venues bring different generations together, increasing the wellbeing of isolated people and build connections in the Ashton area.

### Communications and Influence

Newsletter – we have continued to share our national quarterly newsletter and have a monthly newsletter from Ashton Circle

TLAP blogs and animates – we were asked by Tlap to contribute resources to share how Community Circles can support personalisation within registered services. We have contributed a blog and range of animates and are supporting Tlap's Rainbow Network of innovative community approaches.

Contributing to ADASS East community approaches – Cath has contributed to ADASS programme of innovations through webinars, online conferences and recorded interviews to promote Community Circles.

### Financial review

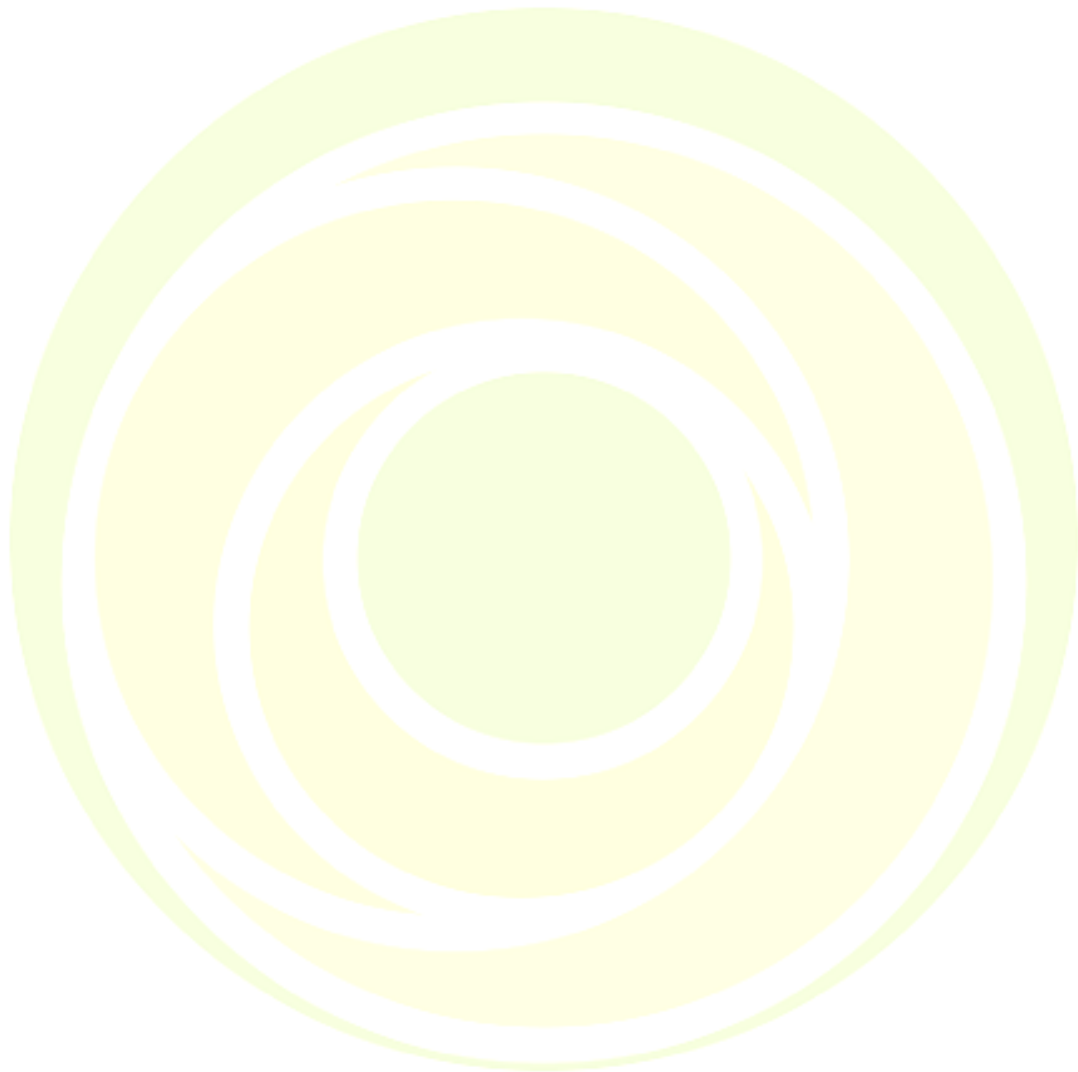
The attached receipts and payments accounts show the current state of the finances, which the Trustees considers to be acceptable. Total incoming resources were £54,055 (2022 - £107,980) and total outgoing payments amounted to £96,526 (2022 - £140,534) the net expenditure for the year was £42,470 (net expenditure 2022 - £32,554). Restricted funds carried forward amounted to £153 (2022 - £8,860), Unrestricted funds carried fund amounted to £11,719 (2022: 45,482).

### Reserves Policy

In light of the main risks to the Charity the Trustees have made a decision that the Charity should keep funds at a suitable level in order to meets its ongoing liabilities.

## Public benefit

The trustees confirm that they have referred to the Charity Commission's general guidance on public benefit when reviewing the Charity's aims and objectives and in planning the future activities of the Charity, These are shown above in the section 'Objectives and activities'.



**INDEPENDENT EXAMINER'S REPORT TO THE TRUSTEES OF**

**COMMUNITY CIRCLES**

**CHARITY REGISTERED NO.1163149**

I report to the charity trustees on my examination of the receipts and payments accounts of the charity for the year ended 31 March 2023 which are set out on pages 7 to 9.

**Respective responsibilities of trustees and examiner**

The charity's trustees are responsible for the preparation of the accounts in accordance with the requirements of the Charities Act 2011 ("the Act").

The charity's trustees consider that an audit is not required for this year under section 144 of the Act and that an independent examination is needed.

It is my responsibility to:

- examine the accounts under section 145 of the Charities Act,
- to follow the applicable Directions given by the Charity Commission (under section 145(5)(b) of the Act, and
- to state whether particular matters have come to my attention

**Basis of independent examiner's statement**

My examination was carried out in accordance with general Directions given by the Charity Commission. An examination includes a review of the accounting records kept by the charity and a comparison of the accounts presented with those records. It also includes consideration of any unusual items or disclosures in the accounts, and seeking explanations from the trustees concerning any such matters. The procedures undertaken do not provide all the evidence that would be required in an audit, and consequently no opinion is given as to whether the accounts present a 'true and fair' view and the report is limited to those matters set out in the statement below.

**Independent examiners' statement**

In connection with my examination, no material matters have come to my attention which gives me cause to believe that in, any material respect:

- accounting records were not kept in accordance with section 130 of the Charities Act or
- the accounts do not accord with the accounting records

I have no concerns and have come across no other matters in connection with the examination to which attention should be drawn in order to enable a proper understanding of the accounts to be reached.

*James Wheelan*

James Wheelan FCCA  
James Wheelan Accountancy Limited  
Chartered Certified Accountants  
Minshull House,  
67 Wellington Road North,  
Stockport, SK4 2LP

Date: 10/08/2023

**COMMUNITY CIRCLES**  
**CHARITY REGISTERED NO.1163149**

**RECEIPTS AND PAYMENTS**  
**FOR THE YEAR ENDED 31ST MARCH 2023**

	Unrestricted Funds	Restricted Funds	Total 2023	Total 2022
<b>Receipts</b>				
Donations, legacies and grants	-	19,470	19,470	49,204
Fees for charitable services	34,585	-	34,585	58,776
<b>Total receipts</b>	<b>34,585</b>	<b>19,470</b>	<b>54,055</b>	<b>107,980</b>
<b>Payments</b>				
Wages and National Insurance	56,346	16,828	73,174	104,201
Pension contributions	3,456	-	3,456	4,816
Insurance	1,644	-	1,644	1,644
Printing, postage, stationery and computer supplies	1,965	172	2,137	13,507
Consultancy fees	2,000	-	2,000	13,188
Professional fees	1,250	-	1,250	1,410
Travel	-	8,000	8,000	72
Telephone, internet and postage	1,021	-	1,021	1,096
Bank interest and charges	-	-	-	-
Grants payable	-	3,177	3,177	460
Other expenditure	667	-	667	140
<b>Sub total</b>	<b>68,349</b>	<b>28,177</b>	<b>96,526</b>	<b>140,534</b>
<b>Asset and investment purchases</b>	<b>-</b>	<b>-</b>	<b>-</b>	<b>-</b>
<b>Total payments</b>	<b>68,349</b>	<b>28,177</b>	<b>96,526</b>	<b>140,534</b>
<b>Net of receipts/(payments)</b>	<b>(33,763)</b>	<b>(8,707)</b>	<b>(42,470)</b>	<b>(32,554)</b>
Transfers between funds	-	-	-	-
Cash funds brought forward at 1 April 2022	45,482	8,860	54,342	86,897
Cash funds carried forward at 31 March 2023	<b>11,719</b>	<b>153</b>	<b>11,872</b>	<b>54,342</b>

**COMMUNITY CIRCLES**  
**CHARITY REGISTERED NO.1163149**

**STATEMENT OF ASSETS AND LIABILITIES AS AT 31ST MARCH 2023**

	Unrestricted Funds	Restricted Funds	Total 2023	Total 2022
<b>CASH FUNDS</b>				
Treasurers account	11,719	153	11,872	54,342
<hr/>				
<b>Total cash funds</b>	<b>11,719</b>	<b>153</b>	<b>11,872</b>	<b>54,342</b>
<b>ASSETS RETAINED FOR THE CHARITIES OWN USE</b>				
Computers and other equipment	-	-	-	454
Amounts owed	-	-	-	-
<hr/>				
<b>Total</b>	<b>-</b>	<b>-</b>	<b>-</b>	<b>454</b>
<b>LIABILITIES</b>				
Accruals	600	-	600	600
Other taxes	157	-	157	1,124
<hr/>				
<b>Total liabilities</b>	<b>757</b>	<b>-</b>	<b>757</b>	<b>1,724</b>

Approved by the Management Committee and signed on its behalf

*H Sanderson*

..... Dr H Sanderson - Chair

10/08/2023

..... Date

**COMMUNITY CIRCLES**  
**CHARITY REGISTERED NO.1163149**

**NOTES TO THE FINANCIAL STATEMENTS**  
**FOR THE YEAR ENDED 31ST MARCH 2023**

**1. RELATED PARTY TRANSACTIONS**

The Charity has transacted with related parties as follows:-

Helen Sanderson Ltd, a company under the control of Dr H Sanderson (CEO and founder), granted £Nil (2022: £38,180) to Community Circles. In the current year £60 was sent to the company in respect of expenses incurred.

Helen Sanderson Ltd, a company under the control of Dr H Sanderson (CEO and founder), paid £Nil (2022: £5,349) to Community Circles in respect of a partnership with Touched By Olivia Foundation Limited.

Helen Sanderson Ltd, a company under the control of Dr H Sanderson (CEO and founder), was paid £Nil in respect of salary recharges (2022: £2,663).

Trustees, Dr H Sanderson (CEO and founder), Michelle Livesley, Emily McArdle and Ben Rosamond were each paid £2,000 in respect of travel expenses to Australia in order to launch Community Circles in the Australian market in partnership with Touched by Olivia.

**COMMUNITY CIRCLES**

England & Wales - Charity number 1163149

---

# Accounts

---



Community  
Circles

Community Circles creates  
opportunities for people to come  
together to have better and more  
connected lives

**End of year report and accounts  
March 2022**

## Reference and administrative information

The charity is registered with the Charities Commission, registration number 1163149  
Registered address 1 Church View, Knutsford WA16 6DQ

## Trustees

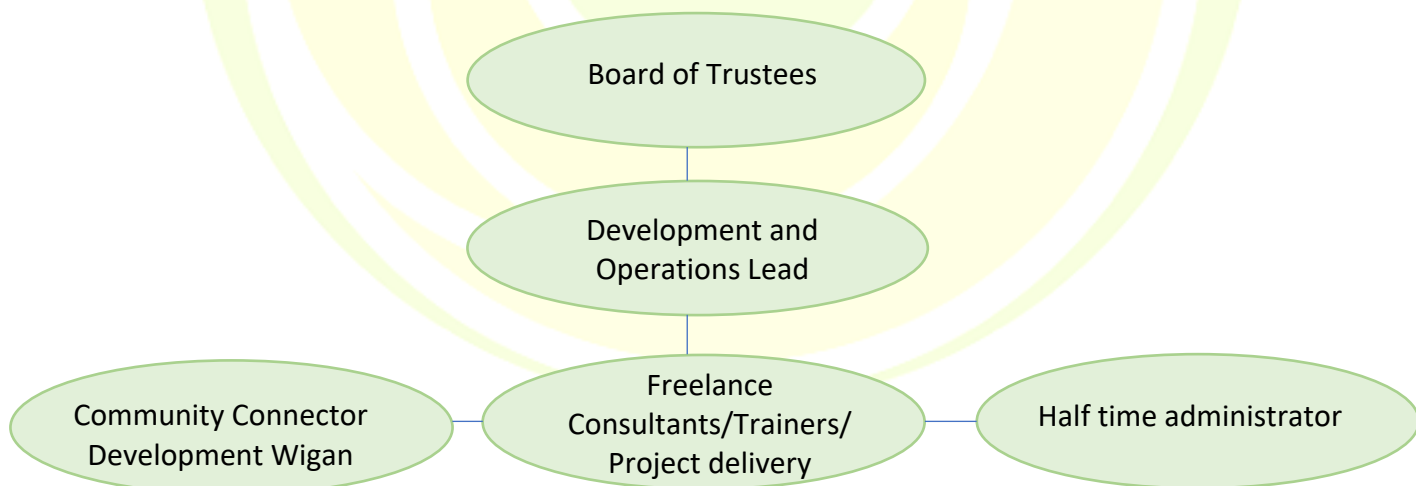
Helen Sanderson MBE (Chair)  
Michelle Livesley  
Emily McArdle  
Ben Rosamond

## Independent Examiner

The charity's independent examiner is James Wheelan FCCA of James Wheelan Accountancy, Minshull House, 67 Wellington Road North, Stockport SK4 2LP

## Structure, Governance and Management

Community Circles is constituted as a body corporate under part 11 of the Charities Act 2011. The board of Trustees meet together with the operational team monthly to ensure we are working towards our charitable purpose and following through on our strategic objectives. Community Circles operates as a self managed team with roles, processes and structures to support our strategic objectives and operations as detailed in the diagram below



## Objectives and Activities

The purpose of Community Circles is to create opportunities for people to come together to have better and more connected lives.

To promote social inclusion for the public benefit by preventing people from becoming socially excluded, relieving the needs of those people who are socially excluded, relieving the needs of those people who are socially excluded and assisting them to integrate into society. For the purpose of this clause 'socially excluded' means being excluded from society, or parts of society, as a result of one or more of the following factors: unemployment; financial hardship; youth or old age; ill health (physical or mental); substance abuse or dependency including alcohol and drugs; discrimination on the grounds of sex, race, disability, ethnic origin, religion, belief, creed, sexual orientation or gender re-assignment; poor educational or skills attainment; relationship and family breakdown; poor housing or skills attainment; relationship and family breakdown; poor housing (that is housing that does not meet basic habitual standards); crime (either as a victim of a crime or as an offender rehabilitating into society).

Community Circles partners with a variety of health and social care organisations and local authorities to provide training and consultancy in circles of support, community and person centred approaches to help people stay connected to the people, places and interests that matter to them and supports their wellbeing.

## Achievements and Performance

### Ashton Circle

Ashton Circle is led by Connector Becky Noy, supporting people to come together around shared interests, creating opportunities for friendships to flourish. The number of local members of Ashton Circle was affected by the pandemic and resuming our face to face support meant reaching out to new members. As a charity we agreed that our focus would be to connect with anyone of any age living in Ashton, rather than our previous focus of working alongside older people. In order to make a difference to the people living in Ashton, to deliver on our purpose and to consider the sustainability of shared interest groups, we have been developing new ideas for community connections. Through guidance from Trustees we have been developing the Two Hour Club, rethinking volunteering as a way of investing in your own wellbeing; developing Small Sparks grants to support local people with their ideas for community connections and exploring Business 100 for developing reciprocal relationships with local businesses and Community Circles.

### Circles Connected

Circles Connected was developed in response to the pandemic, supporting people to connect online when face to face groups wasn't possible. We provided a variety of content through our Facebook Group, including video content to support people with hobbies and interests, live Zoom events to support conversation and connection and a variety of Facebook posts. The Facebook Group responded to the wishes of our members, providing

content which reflected peoples interests and gathering members feedback. In response to our members wishes, we have continued to provide some online sessions including Action for Happiness course, watercolour class, poetry group and coffee club.

#### Discovery

Community Circles has provided training and support to Discovery colleagues in developing circles of support, person centred approaches and community mapping.

#### Lincolnshire County Council

Community Circles has provided training to day centre staff from Lincolnshire County Council in person centred and community approaches. We have worked closely with the Maximising Independence Team, offering bespoke support in all aspects of person centred approaches and relational practice. With support the team have developed some Small Sparks and Two Hour Club initiatives.

#### Making Space

Community Circles role working alongside Making Space has been twofold; supporting the development of a new carers service and co-producing this alongside carers based on their interests and providing support to extra care colleagues, helping connect people around shared interests and supporting their wellbeing.

#### PossAbilities

Community Circles has provided a variety of bespoke training and support to PossAbilities colleagues including circles of support, connecting people around shared interests, exploring purpose and values and community contributions. PossAbilities have extended their partnership with Community Circles for a second year until March 2023.

#### Royal Borough of Windsor and Maidenhead

The original intention was to work alongside colleagues from Maidenhead Football Club Community and NHS colleagues to develop wellbeing circles. Due to the impact of the pandemic, training was delivered to a smaller group of people than expected because many NHS colleagues were redeployed into other roles. In order to provide flexible support to NHS colleagues, an e-resource was developed including documents, webinar recordings, stories, examples and templates.

#### Mencap

Community Circles has provided training and ongoing coaching to a range of Mencap staff in person centred and community approaches. We have also provided consultancy support for the development of new projects. Mencap have continued with their partnership with Community Circles for a second year until March 2023.

#### Communications and Influence

Newsletter – we have continued to share our national quarterly newsletter and have a monthly newsletter from Ashton Circle

TLAP blogs and animates – we were asked by Tlap to contribute resources to share how Community Circles can support personalisation within registered services. We have

contributed a blog and range of animates and are supporting Tlap's Rainbow Network of innovative community approaches.

Social Care Future – we have contributed to Social Care Futures gathering in Manchester, hosting a workshop together with Imagine, Act, Succeed sharing updates about Small Sparks and The Two Hour Club. Following our workshop we are having first conversations with Macintyre in September to explore future partnership working.

APPG on dementia – Cath and Kath Crowther were invited to the online event to talk about Community Circles as part of the APPG inquiry report on the social care workforce. Cath has been invited to the report launch in Parliament to speak to a panel of MP's about Community Circles and the recommendations from the report.

Contributing to ADASS East community approaches – Cath has contributed to ADASS programme of innovations through webinars and recorded interviews to promote Community Circles.

## Financial review

The attached receipts and payments accounts show the current state of the finances, which the Trustees considers to be acceptable. Total incoming resources were £107,980 (2021 - £99,274) and total outgoing payments amounted to £140,074 (2021 - £154,739) the net expenditure for the year was £32,095 (net income 2021 - £55,465). Restricted funds carried forward amounted to £8,860 (2021 - £142,362), Unrestricted funds carried fund amounted to £45,485 (2021: Nil).

## Reserves Policy

In light of the main risks to the Charity the Trustees have made a decision that the Charity should keep funds at a suitable level in order to meets its ongoing liabilities.

## Public benefit

The trustees confirm that they have referred to the Charity Commission's general guidance on public benefit when reviewing the Charity's aims and objectives and in planning the future activities of the Charity, These are shown above in the section 'Objectives and activities'.

Approved by the board on 26/01/2023



Helen Sanderson MBE  
Chair

**INDEPENDENT EXAMINER'S REPORT TO THE TRUSTEES OF**

**COMMUNITY CIRCLES**

**CHARITY REGISTERED NO.1163149**

I report to the charity trustees on my examination of the receipts and payments accounts of the charity for the year ended 31 March 2022 which are set out on pages 7 to 9.

**Respective responsibilities of trustees and examiner**

The charity's trustees are responsible for the preparation of the accounts in accordance with the requirements of the Charities Act 2011 ("the Act").

The charity's trustees consider that an audit is not required for this year under section 144 of the Act and that an independent examination is needed.

It is my responsibility to:

- examine the accounts under section 145 of the Charities Act,
- to follow the applicable Directions given by the Charity Commission (under section 145(5)(b) of the Act, and
- to state whether particular matters have come to my attention

**Basis of independent examiner's statement**

My examination was carried out in accordance with general Directions given by the Charity Commission. An examination includes a review of the accounting records kept by the charity and a comparison of the accounts presented with those records. It also includes consideration of any unusual items or disclosures in the accounts, and seeking explanations from the trustees concerning any such matters. The procedures undertaken do not provide all the evidence that would be required in an audit, and consequently no opinion is given as to whether the accounts present a 'true and fair' view and the report is limited to those matters set out in the statement below.

**Independent examiners' statement**

In connection with my examination, no material matters have come to my attention which gives me cause to believe that in, any material respect:

- accounting records were not kept in accordance with section 130 of the Charities Act or
- the accounts do not accord with the accounting records

I have no concerns and have come across no other matters in connection with the examination to which attention should be drawn in order to enable a proper understanding of the accounts to be reached.

*James Wheelan*

James Wheelan FCCA  
James Wheelan Accountancy Limited  
Chartered Certified Accountants  
Minshull House,  
67 Wellington Road North,  
Stockport, SK4 2LP

Date: 26/01/2023

**COMMUNITY CIRCLES**  
**CHARITY REGISTERED NO.1163149**

**RECEIPTS AND PAYMENTS**  
**FOR THE YEAR ENDED 31ST MARCH 2022**

	Unrestricted Funds	Restricted Funds	Total 2022	Total 2021
<b>Receipts</b>				
Donations, legacies and grants	30,204	19,000	49,204	99,274
Fees for charitable services	58,775	-	58,775	-
<b>Total receipts</b>	<b>88,980</b>	<b>19,000</b>	<b>107,980</b>	<b>99,274</b>
<b>Payments</b>				
Wages and National Insurance	7,304	96,897	104,201	120,011
Pension contributions	4,816	-	4,816	6,078
Insurance	1,644	-	1,644	-
Printing, postage, stationery and computer supplies	13,507	-	13,507	2,458
Consultancy fees	13,188	-	13,188	18,817
Professional fees	1,410	-	1,410	1,435
Travel	72	-	72	714
Telephone, internet and postage	1,096	-	1,096	1,836
Bank interest and charges	-	-	-	1
Grants payable	460	-	-	-
Other expenditure	-	140	140	2,505
<b>Sub total</b>	<b>43,498</b>	<b>97,037</b>	<b>140,074</b>	<b>153,855</b>
<b>Asset and investment purchases</b>	<b>-</b>	<b>-</b>	<b>-</b>	<b>884</b>
<b>Total payments</b>	<b>43,498</b>	<b>97,037</b>	<b>140,074</b>	<b>154,739</b>
<b>Net of receipts/(payments)</b>	<b>45,482</b>	<b>(78,037)</b>	<b>(32,095)</b>	<b>(55,465)</b>
Transfers between funds	-	-	-	-
Cash funds brought forward at 1 April 2021	-	86,897	86,897	142,362
Cash funds carried forward at 31 March 2022	<b>45,482</b>	<b>8,860</b>	<b>54,802</b>	<b>86,897</b>

**COMMUNITY CIRCLES**  
**CHARITY REGISTERED NO.1163149**

**STATEMENT OF ASSETS AND LIABILITIES AS AT 31ST MARCH 2022**

	Unrestricted Funds	Restricted Funds	Total 2022	Total 2021
<b>CASH FUNDS</b>				
Treasurers account	45,482	8,860	54,342	86,897
<b>Total cash funds</b>	<b>45,482</b>	<b>8,860</b>	<b>54,342</b>	<b>86,897</b>
<b>ASSETS RETAINED FOR THE CHARITIES OWN USE</b>				
Computers and other equipment	-	748	748	748
Amounts owed	-	-	-	46,286
<b>Total</b>	<b>-</b>	<b>748</b>	<b>748</b>	<b>47,034</b>
<b>LIABILITIES</b>				
Accruals	600	-	600	600
Other taxes	1,124	-	1,124	2,795
<b>Total liabilities</b>	<b>1,724</b>	<b>-</b>	<b>1,724</b>	<b>3,395</b>

Approved by the Management Committee and signed on its behalf

*H Sanderson*

..... Dr H Sanderson - Chair

26/01/2023

..... Date

**COMMUNITY CIRCLES**  
**CHARITY REGISTERED NO.1163149**

**NOTES TO THE FINANCIAL STATEMENTS**  
**FOR THE YEAR ENDED 31ST MARCH 2022**

**1. RELATED PARTY TRANSACTIONS**

The Charity has transacted with related parties as follows:-

Wellbeing Teams Group Ltd, a company under the control of Dr H Sanderson (CEO and founder) paid £Nil (2021: £8,305) to Community Circles in respect of salary and expense recharges and was paid £Nil (2021: £1,136) in respect of training. At the end of the year a balance of £nil was owed to the charity (2021: £nil). This company was dissolved on 7 September 2021.

Helen Sanderson Ltd, a company under the control of Dr H Sanderson (CEO and founder), granted £38,180 (2021: £2,500) to Community Circles.

Helen Sanderson Ltd, a company under the control of Dr H Sanderson (CEO and founder), paid £5,349 (2021: £Nil) to Community Circles in respect of a partnership with Touched By Olivia Foundation Limited.

Helen Sanderson Ltd, a company under the control of Dr H Sanderson (CEO and founder), was paid £2,663 in respect of salary recharges (2021: £Nil).

**COMMUNITY CIRCLES**

England & Wales - Charity number 1163149

---

# Accounts

---

COMMUNITY CIRCLES  
CHARITY REGISTERED NO. 1163149

RECEIPTS AND PAYMENTS ACCOUNTS  
FOR THE YEAR ENDED 31ST MARCH 2021

**COMMUNITY CIRCLES**  
**CHARITY REGISTERED NO. 1163149**  
**TRUSTEES' REPORT**  
**FOR THE YEAR ENDED 31ST MARCH 2021**

**REFERENCE AND ADMINISTRATIVE INFORMATION**

The Charity is registered with the Charities Commission, its registration number is 1163149.

The principal office of the Charity is 1 Church View, Knutsford, WA16 6DQ.

**TRUSTEES**

The Trustees of the charity are:-

Mrs J Harvey – resigned 28 February 2021  
Dr H Sanderson  
Mr A Gitsham – resigned 28 February 2021  
Ms E McArdle – appointed 3 March 2021  
Mr B Rosamond – appointed 3 March 2021  
Ms M Livesley – appointed 3 March 2021  
Mrs V Jones – resigned 28 February 2021

**INDEPENDENT EXAMINER**

The Charity's independent examiner is Mr James Wheelan FCCA of James Wheelan Accountancy, Minshull House, 67 Wellington Road North, Stockport, SK4 2LP.

**STRUCTURE, GOVERNANCE AND MANAGEMENT**

The Charity is constituted as a body corporate under Part 11 of the Charities Act 2011 and is governed by its constitution which was adopted on 14 August 2015. Community Circles is run by its board of trustees and is governed by its constitution. The trustees are supported with the day to day running of the charity by the development team, made up of a team of development workers and freelance consultants, working with some of our initial partners. The trustees meet quarterly and the development team meet bi-monthly at our 'community of practice' meetings, to ensure that we are working towards our charitable objectives and we are following through on our strategic objectives. The board of trustees currently consist of Vicky Jones, Joanne Harvey and Helen Sanderson. Helen Sanderson is the CEO of Community Circles and is ultimately responsible for the management of the organisation as a whole with Martin Routledge taking on operational lead responsibilities.

Recruitment and Appointment of Directors and Trustees

The trustees of the Charity are appointed in accordance with Charity's constitution.

**OBJECTIVES AND ACTIVITIES**

The primary charitable objective of Community Circles is:

To promote social inclusion for the public benefit by preventing people from becoming socially excluded, relieving the needs of those people who are social excluded and assisting them to integrate into society. For the purpose of this clause, 'socially excluded' means being excluded from society, or parts of society, as a result of one or more of the following factors: unemployment; financial hardship; youth or old age; ill health (physical or mental); substance abuse or dependency including alcohol and drugs; discrimination on the grounds of sex, race, disability, ethnic origin, religion, belief, creed, sexual orientation or gender re-assignment; poor educational or skills attainment; relationship and family breakdown; poor housing (that is housing that does not meet basic habitable standards); crime (either as a victim or as an offender rehabilitating into society).

We achieve this by delivering Community Circles across the UK. Community Circles are a way for friends and family to support someone, through conversation and actions, supported by a facilitator. The facilitator helps the friends' and family's conversation to move to action, through person-centred practices. Community Circles are a way for us to support each other in our local community. Each Community Circle has a purpose – this is the reason why the person wants a circle. It may be to meet new people, get practical support, feel stronger, or help with managing a change. No two circles are alike. In a Community Circle people come together to talk and plan with a person about what they can

**COMMUNITY CIRCLES**  
**CHARITY REGISTERED NO.1163149**  
**TRUSTEES' REPORT**  
**FOR THE YEAR ENDED 31ST MARCH 2021**  
**(CONTINUED)**

do together, A Community Circle can be held in someone's home, in a church, temple, or school, a restaurant or a pub: anywhere where the person is comfortable, and is a safe place to talk.

### **ACHIEVEMENTS AND PERFORMANCE**

2020-21 was significantly disrupted by the Covid pandemic, with impact on both charity activity and finances. Nevertheless we adapted in order to deliver to people and projects and we were able to sustain sufficient finances to move forward into 2021/2 with some confidence. Here is an outline of activity:

#### **We'll Meet Again**

Lottery grant funding enabled this short partnership with Social Care Future and In Control. The two main activities and products were: 1. an on-line resource sharing approaches and resources enabling people to stay connected during lockdowns, in particular to support older and disabled people 2. Some direct support to people experiencing isolation and separation for loved ones and usual activities including provision of tablets

#### **Doncaster Partnership**

We are continuing to support and mentor local Age UK staff on the lottery funded project and assist with development and evaluation. A successful fourth year for the project included the scheme's continuing expansion. In addition to continued support for operational staff we have been offering advice to senior staff relating to post-lottery sustainability

#### **Circles Connected**

Our two part time community connectors continued to support older people to connect to each other in Abingdon and Ashton. The Abingdon project was coming to the conclusion of Lottery Support and a report on its successful work was submitted. The major development was driven by the pandemic. In the early stages of the first lockdown the decision was taken to move the projects on-line. Instead of a programme of community based activities these are now offered on-line. In the context of Covid this has been very successful. Daily and weekly programmes of activities and connections have been provided by staff, volunteers, freelancers and members. Advantages of the on-line offer have included the ability to include members beyond the two geographical areas (numbers quickly grew to more than 500) and to sustain an offer in Abingdon after the end of Lottery funding. As the financial year was coming to an end we started to plan how to return to face to face support in Ashton when Covid conditions allow.

#### **Warwickshire project**

We continued to support to the County Council to share Circles methodology with statutory and voluntary sector partners. This project has now concluded.

#### **Suffolk project**

The pandemic hit just as we were getting properly started with this two-year project. In agreement with the Suffolk Community Connected team and leadership we adapted so that our first year support shifted to on-line. This has included the provision of significant on-line training directly to the Suffolk Team and also to partner organisations including both statutory and community and voluntary sector partnerships. We have given direct advice on specific projects and activities to a range of groups within the three target areas and made our tools and resources available as appropriate. We have given specific support to a local hospice, in particular on the "one page profile" approach and we have assisted the development of a public facing video animation for their outreach project. Moving into the next year we are likely to provide significant support to extra care housing partners in developing Circles approaches.

#### **Shared Lives project**

Some funding from the Shared Lives charity allowed us to work with them offering e-learning and on-line training to interested Shared Lives carers to use Circles approaches in their support to people living with them as part of Shared Lives schemes

**COMMUNITY CIRCLES**  
**CHARITY REGISTERED NO.1163149**  
**TRUSTEES' REPORT**  
**FOR THE YEAR ENDED 31ST MARCH 2021**  
**(CONTINUED)**

**Oxfordshire Project**

Our OCC funded project to support the development of Circles within three residential homes was significantly disrupted by Covid and the consequent infection control activity of the homes. We provided significant initial design and training support to homes staff and mentored the community connector to the project. During the early stages we were able to offer some virtual support but eventually the project was suspended. We subsequently agreed to shift resources in support for a Community Catalysts project in the City.

**Communications and influence**

We have continued to offer the bi-monthly newsletter to keep members connected and able to share and support each other. We have further developed our social media presence and continue to produce regular blogs and other communications for the sector. We continue to be active members of sector coalitions including Think Local Act Personal and are part of the new Social Care Future Movement  
The community of practice has moved on-line with weekly opportunities for sharing and problem solving and email and slack communication

**Recent developments**

In the second half of the year we reviewed our position and offers in the context of the continuing pandemic. As a result two developments emerged 1. The development of a series of on line training courses 2. A partnership offer of annual support

Both have developed and a number of courses started. We were also successful in recruiting six partners for 12 month projects of various types

**FINANCIAL REVIEW**

The attached receipts and payments accounts show the current state of the finances, which the Trustees considers to be acceptable. Total incoming resources were £99,274 (2020 - £284,137) and total outgoing payments amounted to £154,739 (2020 - £166,430) the net expenditure for the year was £55,465 (net income 2020 - £117,707). Restricted funds carried forward amounted to £142,362 (2020 - £86,897).

**Reserves Policy**

In light of the main risks to the Charity the Trustees have made a decision that the Charity should keep funds at a suitable level in order to meet its ongoing liabilities.

**PUBLIC BENEFIT**

The trustees confirm that they have referred to the Charity Commission's general guidance on public benefit when reviewing the Charity's aims and objectives and in planning the future activities of the Charity, These are shown above in the section 'Objectives and activities'.

Approved by the trustees and signed on their behalf by:



**Dr H Sanderson**  
**Chair**

**Date: 21/12/2021**

**INDEPENDENT EXAMINER'S REPORT TO THE TRUSTEES OF**  
**COMMUNITY CIRCLES**  
**CHARITY REGISTERED NO.1163149**

I report to the charity trustees on my examination of the receipts and payments accounts of the charity for the year ended 31 March 2021 which are set out on pages 5 to 7.

**Respective responsibilities of trustees and examiner**

The charity's trustees are responsible for the preparation of the accounts in accordance with the requirements of the Charities Act 2011 ("the Act").

The charity's trustees consider that an audit is not required for this year under section 144 of the Act and that an independent examination is needed.

It is my responsibility to:

- examine the accounts under section 145 of the Charities Act,
- to follow the applicable Directions given by the Charity Commission (under section 145(5)(b) of the Act, and
- to state whether particular matters have come to my attention

**Basis of independent examiner's statement**

My examination was carried out in accordance with general Directions given by the Charity Commission. An examination includes a review of the accounting records kept by the charity and a comparison of the accounts presented with those records. It also includes consideration of any unusual items or disclosures in the accounts, and seeking explanations from the trustees concerning any such matters. The procedures undertaken do not provide all the evidence that would be required in an audit, and consequently no opinion is given as to whether the accounts present a 'true and fair' view and the report is limited to those matters set out in the statement below.

**Independent examiners' statement**

In connection with my examination, no material matters have come to my attention which gives me cause to believe that in, any material respect:

- accounting records were not kept in accordance with section 130 of the Charities Act or
- the accounts do not accord with the accounting records

I have no concerns and have come across no other matters in connection with the examination to which attention should be drawn in order to enable a proper understanding of the accounts to be reached.



James Wheelan FCCA  
James Wheelan Accountancy Limited  
Chartered Certified Accountants  
Minshull House,  
67 Wellington Road North,  
Stockport, SK4 2LP

Date: 21-12-2021

**COMMUNITY CIRCLES**  
**CHARITY REGISTERED NO.1163149**

**RECEIPTS AND PAYMENTS**  
**FOR THE YEAR ENDED 31ST MARCH 2021**

	Unrestricted Funds	Restricted Funds	Total 2021	Total 2020
<b>Receipts</b>				
Donations, legacies and grants	-	99,274	99,274	284,137
<b>Total receipts</b>	-	<b>99,274</b>	<b>99,274</b>	<b>284,137</b>
<b>Payments</b>				
Wages and National Insurance	-	120,011	120,011	89,392
Pension contributions	-	6,078	6,078	4,017
Insurance	-	-	-	2,086
Printing, postage, stationery and computer supplies	-	2,458	2,458	12,780
Consultancy fees	-	18,817	18,817	43,659
Professional fees	-	1,435	1,435	1,363
Travel	-	714	714	4,981
Telephone, internet and postage	-	1,836	1,836	1,210
Bank interest and charges	-	1	1	39
Other expenditure	-	2,505	2,505	6,903
<b>Sub total</b>	-	<b>153,855</b>	<b>153,855</b>	<b>166,430</b>
<b>Asset and investment purchases</b>	-	<b>884</b>	<b>884</b>	-
<b>Total payments</b>	-	<b>154,739</b>	<b>154,739</b>	<b>166,430</b>
<b>Net of receipts/(payments)</b>	-	<b>(55,465)</b>	<b>(55,465)</b>	<b>117,707</b>
Transfers between funds	-	-	-	-
Cash funds brought forward at 1 April 2020	-	142,362	142,362	24,655
<b>Cash funds carried forward at 31 March 2021</b>	-	<b>86,897</b>	<b>86,897</b>	<b>142,362</b>

**COMMUNITY CIRCLES**  
**CHARITY REGISTERED NO.1163149**

**STATEMENT OF ASSETS AND LIABILITIES AS AT 31ST MARCH 2021**

	Unrestricted Funds	Restricted Funds	Total 2021	Total 2020
<b>CASH FUNDS</b>				
Treasurers account	-	86,897	86,897	142,363
<b>Total cash funds</b>	-	<b>86,897</b>	<b>86,897</b>	<b>142,363</b>
<b>ASSETS RETAINED FOR THE CHARITIES OWN USE</b>				
Computers and other equipment	-	748	748	160
Amounts owed	-	46,286	46,286	5,479
<b>Total</b>	-	<b>47,034</b>	<b>47,034</b>	<b>5,639</b>
<b>LIABILITIES</b>				
Accruals	-	600	600	895
Other taxes	-	2,795	2,795	2,023
<b>Total liabilities</b>	-	<b>3,395</b>	<b>3,395</b>	<b>2,918</b>

Approved by the Management Committee and signed on its behalf

*H Sanderson*

..... Dr H Sanderson - Chair

21/12/2021

..... Date

**COMMUNITY CIRCLES**  
**CHARITY REGISTERED NO.1163149**

**NOTES TO THE FINANCIAL STATEMENTS**  
**FOR THE YEAR ENDED 31ST MARCH 2021**

**1. RELATED PARTY TRANSACTIONS**

The Charity has transacted with related parties as follows:-

Wellbeing Teams Group Ltd, a company under the control of Dr H Sanderson (chair and trustee) paid £8,305 (2020: £8,435) to Community Circles in respect of salary and expense recharges and was paid £1,136 (2020: £1,661) in respect of training. At the end of the year a balance of £nil was owed to the charity (2020: £nil).

Helen Sanderson Ltd, a company under the control of Dr H Sanderson (chair and trustee), granted £2,500 (2020: £Nil) to Community Circles in respect of Small Sparks.