

ACCESS BEDFORD

England & Wales · Charity number 1162947

Details

Other names	Deaf Access Bedfordshire
Status	Registered
Legal form	CIO
Registered	2015-07-31
Register	View on the Charity Commission register

Contact

Address	Access Bedford Upstairs @ THE PLACE Bradgate Road Bedford MK40 3DE
Phone	07376262873
Email	info@accessbedford.org.uk
Website	www.deafaccessbedfordshire.org.uk

Activities

Objects: THE OBJECT OF THE CIO IS THE PROMOTION OF SOCIAL INCLUSION AMONG MEMBERS OF THE DEAF AND HARD OF HEARING COMMUNITY LIVING IN BEDFORD AND THE SURROUNDING AREA WHO ARE SOCIALLY EXCLUDED FROM SOCIETY, OR PARTS OF SOCIETY, AS A RESULT OF BEING DEAF OR HARD OF HEARING BY:1. RAISING PUBLIC AWARENESS OF THE ISSUES AFFECTING DEAF PEOPLE, BOTH GENERALLY AND IN RELATION TO THEIR SOCIAL EXCLUSION;2. CAMPAIGNING FOR THE PROMOTION OF BRITISH SIGN LANGUAGE TO BE ON AN EQUAL FOOTING TO SPOKEN AND WRITTEN ENGLISH; AND3. PROVIDING RECREATIONAL FACILITIES AND OPPORTUNITIES FOR DEAF PEOPLE TO INTEGRATE WITH THE HEARING COMMUNITY.

Activities: 1 Raising public awareness of the issues affecting deaf people2 Campaigning for the promotion of British Sign Language to be on an equal footing to spoken and written English3 Providing recreational facilities and opportunities for deaf people to integrate with the hearing community

Classification

- **How:** Provides Human Resources, Provides Advocacy/advice/information
- **What:** Education/training, The Advancement Of Health Or Saving Of Lives, Disability, Economic/community Development/employment, Human Rights/religious Or Racial Harmony/equality Or Diversity, Recreation
- **Who:** Children/young People, Elderly/old People, People With Disabilities, The General Public/mankind

Geography

- Bedford

Finances

Period end	Income	Expenditure	Assets	Employees
2025-04-01	£85,738	£52,742	-	-
2024-04-01	£26,535	£29,203	-	-
2023-04-01	£31,575	£19,241	-	-
2022-04-01	£10,263	£15,072	-	-
2021-04-01	£14,300	£10,349	-	-

Trustees

Name	Role	Appointed
CATHERINE WRIGHT		2015-05-01
Claire Margaret Jones		2024-05-17
Rebecca James		2023-05-03

ACCESS BEDFORD

England & Wales - Charity number 1162947

Accounts

Financial Statements

Year ended 31 March 2025

	Page
Trustees' annual report	1
Independent accountant's report to the trustees	2
Statement of financial activities	3
Statement of financial position	4
Notes to the financial statements	5
The following pages do not form part of the financial statements	7
Detailed statement of financial activities	10

Access Bedford
Unaudited Financial Statements
31 March 2025

Access Bedford
Financial Statements
Year ended 31 March 2025

The trustees present their report and the audited financial statements of the charity for the year ended 31 March 2025.

	Page
Trustees' annual report	1
Independent examiner's report to the trustees	4
Statement of financial activities	5
Statement of financial position	6
Notes to the financial statements	7
The following pages do not form part of the financial statements	
Detailed statement of financial activities	15

(Signed 21 June 2025)

Ms C Wright

Ms C Jones

(Approved 17 May 2024)

Structure, governance and appointment

Access Bedford is a charitable incorporated company, managed by a board of trustees, with the assistance of a part-time paid chief executive, two part-time staff and a voluntary group all of which have led to the development and growth of the charity across Bedfordshire.

Objectives and activities

The objectives of the charity are to enhance the local well-being and health of the community, reduce social isolation and improve physical and mental health through all events, support, training and the provision of accessible services, advice and guidance services. We also aim to increase inclusivity within the community by working with voluntary and service providers in the local community, to improve deaf awareness and understanding through training, education and the creation of inclusive events and activities.

Access Bedford

Trustees' Annual Report

Year ended 31 March 2025

The trustees present their report and the unaudited financial statements of the charity for the year ended 31 March 2025.

Reference and administrative details

Registered charity name Access Bedford
Charity registration number 1162947
Principal office The Place
Bradgate Road
Bedford
MK40 3DE

The trustees

Mrs R James	
Mrs H Bolton	(Resigned 27 June 2025)
Mrs C Wright	
Mrs C Jones	(Appointed 17 May 2024)

Structure, governance and management

Access Bedford is a deaf-lead incorporated charity, managed by a board of trustees with the assistance of a part-time paid charity manager, two part time staff and a volunteer group, all of whom have ties to the deaf and hard of hearing community across Bedfordshire.

Objectives and activities

The objectives of the charity are to empower the local deaf and hard of hearing community, reduce local isolation and improve physical and mental wellbeing through events, support, training and the provision of accessible Information, Advice and Guidance services. We also aim to improve inclusivity within Bedfordshire by working with individuals and service providers in the hearing community, to improve deaf awareness and understanding through training, education and the creation of inclusive events and activities.

Access Bedford

Trustees' Annual Report *(continued)*

Year ended 31 March 2025

Achievements and performance

Access Bedford has been a dedicated champion for change, inclusion, and equity for the deaf and hard of hearing community for over a decade. We address the marginalisation and discrimination faced by deaf individuals in all aspects of life within our region.

Through our Deaf Space Support provision we regularly work with families in the local area, providing support in all areas of life, from booking travel and job seeking to accessing health care and filing HMRC tax returns.

We continue to work with any relevant, appropriate, and engaged partners from all sectors to open doors, remove barriers, and empower our community to thrive. By leveraging these collaborations and referral processes, Access Bedford ensures that our community receives comprehensive and effective support, enhancing their quality of life and promoting inclusively.

Our deaf-led fitness club continues to thrive, and helps improve the physical and mental wellbeing of our deaf community and also promotes inclusion through welcoming hearing people to the activities.

The Deaf Space service, funded by the Frank Branston community Foundation, provides information, advice and guidance (IAG) through the provision of free IAG support workers and interpreters, and we have been able to broaden our service by partnering with Luton Citizens Advice Service.

We continue to deliver BSL Courses & Deaf Awareness training in schools, hospitals, fire services, hospices, local government and to all GP clinical and non-clinical staff across Bedfordshire.

Financial review

The charity's activities continue to extend as a result of increases in funding obtained. Future plans include making a substantial funding application to the National Lottery which, if approved, will expand our staffed team to support the charity to grow and become sustainable into the next decade.

The funding application will include a move to permanent premises offering Access Bedford a home and allowing us to continue to provide services to support and empower our deaf service users.

Restricted funds

BLMK ICG
Bedford & Luton Community Foundation
The Harpur Trust
House of Industry – Bedford Borough Council
Welcoming Spaces - Bedford Borough Council

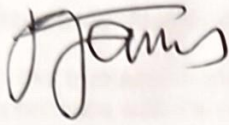
Funding received allowed the charity to deliver information and wellbeing sessions for the deaf community, to provide BSL interpreted Information, advice and guidance services, as well as securing paid roles for two part time staff members.

Access Bedford

Trustees' Annual Report (continued)

Year ended 31 March 2025

The trustees' annual report was approved on 4th March 2026 and signed on behalf of the board of trustees by:



Mrs R James
Trustee

Independent auditor's statement

I have conducted my examination, I confirm that no material misstatements came to my attention in connection with my examination giving rise to believe that a true and fair financial report:

1. accounting records were not kept in respect of the charity as required by section 120 of the Act;
2. the financial statements do not accord with those records; or
3. the financial statements do not comply with the applicable requirements concerning the form and content of accounts set out in the Charities (Accounts) and Reporting Regulations 2008 other than any requirements that the accounts give a true and fair view which is not a matter considered as part of an independent examination.

I have no concerns and have drawn notice of other matters in connection with the accounts to which attention should be drawn in this report in order to enable a proper understanding of the accounts to be reached.



Andrew Mason FCA
Independent Director

4th March 2026

Access Bedford

Independent Examiner's Report to the Trustees of Access Bedford

Year ended 31 March 2025

I report to the trustees on my examination of the financial statements of Access Bedford ('the charity') for the year ended 31 March 2025.

Responsibilities and basis of report

As the trustees of the charity you are responsible for the preparation of the financial statements in accordance with the requirements of the Charities Act 2011 ('the Act').

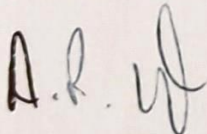
I report in respect of my examination of the charity's financial statements carried out under section 145 of the 2011 Act and in carrying out my examination I have followed all the applicable Directions given by the Charity Commission under section 145(5)(b) of the Act.

Independent examiner's statement

I have completed my examination. I confirm that no material matters have come to my attention in connection with the examination giving me cause to believe that in any material respect:

1. accounting records were not kept in respect of the charity as required by section 130 of the Act; or
2. the financial statements do not accord with those records; or
3. the financial statements do not comply with the applicable requirements concerning the form and content of accounts set out in the Charities (Accounts and Reports) Regulations 2008 other than any requirement that the accounts give a 'true and fair' view which is not a matter considered as part of an independent examination.

I have no concerns and have come across no other matters in connection with the examination to which attention should be drawn in this report in order to enable a proper understanding of the accounts to be reached.



Andrew Upton FCCA
Independent Examiner

4th March 2026

Access Bedford
Statement of Financial Activities
Year ended 31 March 2025

		2025	2025		2024
	Note	Unrestricted funds £	Restricted funds £	Total funds £	Total funds £
Income and endowments					
Donations and legacies	4	49,849	35,888	85,738	26,535
Total income		<u>49,849</u>	<u>35,888</u>	<u>85,738</u>	<u>26,535</u>
Expenditure					
Expenditure on charitable activities	5,6	24,511	28,230	52,742	29,203
Total expenditure		<u>24,511</u>	<u>28,230</u>	<u>52,742</u>	<u>29,203</u>
Net income/(expenditure) and net movement in funds		<u>25,338</u>	<u>7,658</u>	<u>32,996</u>	<u>(2,668)</u>
Reconciliation of funds					
Total funds brought forward		13,020	5,826	18,846	21,514
Total funds carried forward		<u>38,358</u>	<u>13,484</u>	<u>51,842</u>	<u>18,846</u>

The statement of financial activities includes all gains and losses recognised in the year. All income and expenditure derive from continuing activities.

The notes on pages 7 to 13 form part of these financial statements.

Access Bedford

Statement of Financial Position

Year ended 31 March 2025

	Note	2025 £	2024 £
Current assets			
Cash at bank and in hand		51,842	18,846
Net current assets		51,842	18,846
Total assets less current liabilities		51,842	18,846
Funds of the charity			
Restricted funds		13,484	5,826
Unrestricted funds		38,358	13,020
Total charity funds	10	51,842	18,846

These financial statements were approved by the board of trustees and authorised for issue on 4th March 2026 and are signed on behalf of the board by:

Mrs R James
Trustee

Mrs C Jones
Trustee

The notes on pages 7 to 13 form part of these financial statements.

Access Bedford

Notes to the Financial Statements

Year ended 31 March 2025

1. General information

The charity is a public benefit entity and a registered charity in England and Wales and is unincorporated. The address of the principal office is The Place, Bradgate Road, Bedford, MK40 3DE.

2. Statement of compliance

These financial statements have been prepared in compliance with FRS 102, 'The Financial Reporting Standard applicable in the UK and the Republic of Ireland', the Statement of Recommended Practice applicable to charities preparing their accounts in accordance with the Financial Reporting Standard applicable in the UK and Republic of Ireland (FRS 102) (Charities SORP (FRS 102)) and the Charities Act 2011.

3. Accounting policies

Basis of preparation

The financial statements have been prepared on the historical cost basis, as modified by the revaluation of certain financial assets and liabilities and investment properties measured at fair value through income or expenditure.

The financial statements are prepared in sterling, which is the functional currency of the entity.

Going concern

There are no material uncertainties about the charity's ability to continue.

Judgements and key sources of estimation uncertainty

The preparation of the financial statements requires management to make judgements, estimates and assumptions that affect the amounts reported. These estimates and judgements are continually reviewed and are based on experience and other factors, including expectations of future events that are believed to be reasonable under the circumstances.

Fund accounting

Unrestricted funds are available for use at the discretion of the trustees to further any of the charity's purposes.

Designated funds are unrestricted funds earmarked by the trustees for particular future project or commitment.

Restricted funds are subjected to restrictions on their expenditure declared by the donor or through the terms of an appeal, and fall into one of two sub-classes: restricted income funds or endowment funds.

Access Bedford

Notes to the Financial Statements *(continued)*

Year ended 31 March 2025

3. Accounting policies *(continued)*

Incoming resources

All incoming resources are included in the statement of financial activities when entitlement has passed to the charity; it is probable that the economic benefits associated with the transaction will flow to the charity and the amount can be reliably measured. The following specific policies are applied to particular categories of income:

- income from donations or grants is recognised when there is evidence of entitlement to the gift, receipt is probable and its amount can be measured reliably.
- legacy income is recognised when receipt is probable and entitlement is established.
- income from donated goods is measured at the fair value of the goods unless this is impractical to measure reliably, in which case the value is derived from the cost to the donor or the estimated resale value. Donated facilities and services are recognised in the accounts when received if the value can be reliably measured. No amounts are included for the contribution of general volunteers.
- income from contracts for the supply of services is recognised with the delivery of the contracted service. This is classified as unrestricted funds unless there is a contractual requirement for it to be spent on a particular purpose and returned if unspent, in which case it may be regarded as restricted.

Resources expended

Expenditure is recognised on an accruals basis as a liability is incurred. Expenditure includes any VAT which cannot be fully recovered, and is classified under headings of the statement of financial activities to which it relates:

- expenditure on raising funds includes the costs of all fundraising activities, events, non-charitable trading activities, and the sale of donated goods.
- expenditure on charitable activities includes all costs incurred by a charity in undertaking activities that further its charitable aims for the benefit of its beneficiaries, including those support costs and costs relating to the governance of the charity apportioned to charitable activities.
- other expenditure includes all expenditure that is neither related to raising funds for the charity nor part of its expenditure on charitable activities.

All costs are allocated to expenditure categories reflecting the use of the resource. Direct costs attributable to a single activity are allocated directly to that activity. Shared costs are apportioned between the activities they contribute to on a reasonable, justifiable and consistent basis.

Financial instruments

A financial asset or a financial liability is recognised only when the charity becomes a party to the contractual provisions of the instrument.

Basic financial instruments are initially recognised at the amount receivable or payable including any related transaction costs.

Current assets and current liabilities are subsequently measured at the cash or other consideration expected to be paid or received and not discounted.

Access Bedford

Notes to the Financial Statements *(continued)*

Year ended 31 March 2025

3. Accounting policies *(continued)*

Financial instruments *(continued)*

Debt instruments are subsequently measured at amortised cost.

Where investments in shares are publicly traded or their fair value can otherwise be measured reliably, the investment is subsequently measured at fair value with changes in fair value recognised in income and expenditure. All other such investments are subsequently measured at cost less impairment.

Other financial instruments, including derivatives, are initially recognised at fair value, unless payment for an asset is deferred beyond normal business terms or financed at a rate of interest that is not a market rate, in which case the asset is measured at the present value of the future payments discounted at a market rate of interest for a similar debt instrument.

Other financial instruments are subsequently measured at fair value, with any changes recognised in the statement of financial activities, with the exception of hedging instruments in a designated hedging relationship.

Financial assets that are measured at cost or amortised cost are reviewed for objective evidence of impairment at the end of each reporting date. If there is objective evidence of impairment, an impairment loss is recognised under the appropriate heading in the statement of financial activities in which the initial gain was recognised.

For all equity instruments regardless of significance, and other financial assets that are individually significant, these are assessed individually for impairment. Other financial assets are either assessed individually or grouped on the basis of similar credit risk characteristics.

Any reversals of impairment are recognised immediately, to the extent that the reversal does not result in a carrying amount of the financial asset that exceeds what the carrying amount would have been had the impairment not previously been recognised.

4. Donations and legacies

	Unrestricted Funds £	Restricted Funds £	Total Funds 2025 £
Grants			
Grants and donations receivable	<u>49,849</u>	<u>35,888</u>	<u>85,738</u>
	Unrestricted Funds £	Restricted Funds £	Total Funds 2024 £
Grants			
Grants and donations receivable	<u>20,516</u>	<u>6,019</u>	<u>26,535</u>

Access Bedford

Notes to the Financial Statements *(continued)*

Year ended 31 March 2025

5. Expenditure on charitable activities by fund type

	Unrestricted Funds £	Restricted Funds £	Total Funds 2025 £
Support costs	<u>24,511</u>	<u>28,230</u>	<u>52,742</u>
	Unrestricted Funds £	Restricted Funds £	Total Funds 2024 £
Support costs	<u>25,145</u>	<u>4,058</u>	<u>29,203</u>

6. Expenditure on charitable activities by activity type

	Activities undertaken directly £	Total funds 2025 £	Total fund 2024 £
Support costs	<u>52,742</u>	<u>52,742</u>	<u>29,203</u>

7. Independent examination fees

	2025 £	2024 £
Fees payable to the independent examiner for: Independent examination of the financial statements	<u>120</u>	<u>120</u>

8. Staff costs

The average head count of employees during the year was Nil (2024: Nil).

No employee received employee benefits of more than £60,000 during the year (2024: Nil).

9. Trustee remuneration and expenses

No salaries were paid to any of the trustees although interpreter and translation fees totalling £2,159 (2024 - £2,095) were reimbursed to Mrs H Bolton.

Access Bedford

Notes to the Financial Statements (continued)

Year ended 31 March 2025

10. Analysis of charitable funds

Unrestricted funds

	At 1 April 2024	Income	Expenditure	At 31 March 2025
	£	£	£	£
General funds	13,020	49,849	(24,511)	38,358

	At 1 April 2023	Income	Expenditure	At 31 March 2024
	£	£	£	£
General funds	17,649	20,516	(25,145)	13,020

Restricted funds

	At 1 April 2024	Income	Expenditure	At 31 March 2025
	£	£	£	£
NHS Bedfordshire CCG	2,153	-	(636)	1,517
Deaf Coffee Club	1,016	980	(1,203)	793
Family signing	2,657	348	(3,005)	-
Deaf space	-	9,876	(7,088)	2,788
Community Wellbeing	-	9,000	(6,328)	2,672
House of Industry	-	15,184	(9,630)	5,554
Welcoming Spaces	-	500	(340)	160
	<u>5,826</u>	<u>35,888</u>	<u>(28,230)</u>	<u>13,484</u>

	At 1 April 2023	Income	Expenditure	At 31 March 2024
	£	£	£	£
NHS Bedfordshire CCG	3,185	-	(1,032)	2,153
Together Fund	-	1,758	(1,758)	-
Deaf Coffee Club	680	1,128	(792)	1,016
Family signing	-	3,133	(476)	2,657
	<u>3,865</u>	<u>6,019</u>	<u>(4,058)</u>	<u>5,826</u>

Access Bedford

Notes to the Financial Statements *(continued)*

Year ended 31 March 2025

10. Analysis of charitable funds *(continued)*

NHS Bedfordshire CCG

Grant monies were received from the NHS to provide translation of English to British sign language on videos to be used on their social media channels to provide access for the deaf community.

Deaf Coffee Club

Funding was provided from various sources to provide space for the deaf community to meet and socialise and to provide social activities for the group.

Family Signing

Grant monies received will enable the 12 month project to deliver monthly face to face classes to families of deaf children aged 0-6. The sessions will be open to parents and up to 2 other primary carers for each child, with a maximum of 5 children per class.

Deaf Space

The funding provided by the Bedford & Luton Community Foundation is to be used to provide Deaf Space information, advice and guidance service, to enable a paid staff member with BSL Level 6 and IAG qualifications to deliver the service, as well as providing a laptop and mobile phone dedicated to that service to ensure GDPR compliance and client privacy.

Community Wellbeing

The funding provided by The Harpur Trust is to be used to provide intensive 'catch up' workshops designed to mitigate risks, enhance lift skills and boost confidence when interacting with non-BSL service providers. The funding is to cover venue costs, as well as ensuring a suitably qualified BSL interpreter is available to each session to enable clear communication. Each visiting service provider will be given Deaf Awareness training before they present, in order to further improve understanding of the needs of the deaf community.

House of Industry

The funding provided by Bedford Borough Council is to be used to enable the charity to continue to function by covering the wage costs of the Charity Manager and Admin Assistant for 6 months, whilst waiting for a confirmed grant from The National Lottery Community Fund to be finalised and processed.

Welcoming Spaces

The funding by Bedford Borough Council is to enable the Deaf Coffee morning to provide a warm place for BSL community members to socialise and access a free hot drink over the winter months.

Access Bedford

Notes to the Financial Statements *(continued)*

Year ended 31 March 2025

11. Analysis of net assets between funds

	Unrestricted Funds £	Restricted Funds £	Total Funds 2025 £
Current assets	<u>38,358</u>	<u>13,484</u>	<u>51,842</u>

	Unrestricted Funds £	Restricted Funds £	Total Funds 2024 £
Current assets	<u>13,020</u>	<u>5,826</u>	<u>18,846</u>

The following pages do not form part of the financial statements.

Access Bedford
Management Information
Year ended 31 March 2025

	2025	2024
At 1st April 2024		
Income		
Expenditure		
Total Income	25,700	25,700
Transfer from		
Transfer to		
At 31st March 2025		
Total Expenditure	25,700	25,700
Total Income	25,700	25,700
Total Expenditure	25,700	25,700
Surplus/Deficit	0	0

The following pages do not form part of the financial statements.

Access Bedford

Detailed Statement of Financial Activities

Year ended 31 March 2025

	2025 £	2024 £
Income and endowments		
Donations and legacies		
Grants and donations receivable	85,738	26,535
	<u> </u>	<u> </u>
Total income	<u>85,738</u>	<u>26,535</u>
Expenditure		
Expenditure on charitable activities		
Support costs		
<i>Activities undertaken directly</i>		
Interpreter & translation fees	12,810	4,312
Purchases	4,706	3,100
Instructor fees	3,225	4,005
Room hire	4,233	2,915
Training costs	1,176	2,019
Administration support	22,778	10,494
Insurance	112	227
Printing, postage & stationery	357	103
Travelling costs	117	57
Accountancy	680	386
Subscription	364	396
Computer costs	1,075	240
Telephone	130	170
Website costs	924	779
Sundries	55	-
	<u>52,742</u>	<u>29,203</u>
Total expenditure	<u>52,742</u>	<u>29,203</u>
	<u> </u>	<u> </u>
Net income/(expenditure)	<u>32,996</u>	<u>(2,668)</u>

ACCESS BEDFORD

England & Wales - Charity number 1162947

Accounts

CHARITY REGISTRATION NUMBER: 1162947

Access Bedford
Unaudited Financial Statements
31 March 2024

Access Bedford
Financial Statements
Year ended 31 March 2024

	Page
Trustees' annual report	1
Independent examiner's report to the trustees	4
Statement of financial activities	5
Statement of financial position	6
Notes to the financial statements	7
The following pages do not form part of the financial statements	
Detailed statement of financial activities	14

Access Bedford
Trustees' Annual Report
Year ended 31 March 2024

The trustees present their report and the unaudited financial statements of the charity for the year ended 31 March 2024.

Reference and administrative details

Registered charity name	Access Bedford
Charity registration number	1162947
Principal office	40 Kimbolton Road Bedford Beds MK40 2NR

The trustees

Mrs R James	(Appointed 3 May 2023)
Mrs H Bolton	
Mrs C Wright	
Mrs E McAllister	(Resigned 20 May 2023)

Structure, governance and management

Access Bedford is a deaf-lead unincorporated charity managed by a board of trustees with the assistance of a part-time paid charity manager and a volunteer committee. The committee is made up of deaf and hard of hearing individuals from the Bedfordshire area whom have a wealth of relevant experience and help the trustees understand the needs of the local deaf community in order to determine the services on offer.

Objectives and activities

The objectives of the charity are to empower the local deaf community, reduce local isolation and improve physical and mental wellbeing through events, support, training and the provision of free access to qualified interpreters. We also aim to improve inclusivity within Bedford by working with individuals and service providers in the hearing community, to improve deaf awareness and understanding through training, education and the creation of inclusive events and activities.

Access Bedford

Trustees' Annual Report *(continued)*

Year ended 31 March 2024

Achievements and performance

Access Bedford has been a dedicated champion for change, inclusion, and equality for the deaf and hard of hearing community for over a decade. We address the marginalisation and discrimination faced by deaf individuals in all aspects of life within our region. Through our Deaf Space Support provision, we regularly work with families in the local area, providing support in all areas of life, from booking travel and job seeking to accessing health care and filing HMRC tax returns.

We continue to work with any relevant, appropriate, and engaged partners from all sectors to open doors, remove barriers, and empower our community to thrive. By leveraging these collaborations and referral processes, Access Bedford ensures that our community receives comprehensive and effective support, enhancing their quality of life and promoting inclusively.

Our deaf-led fitness club continues to thrive and helps improve the physical and mental wellbeing of our deaf community and also promotes inclusion through welcoming hearing people to the activities.

The Deaf Space service provides information, advice and guidance (IAG) through the provision of free IAG support workers and interpreters.

We are working with hearing parents of deaf children to support and encourage families to learn BSL and empower deaf children to access their primary language. Through funding received from The Harpur Trust, we have set up a funded Family BSL course, providing free BSL classes to the hearing families with children.

We continue to deliver BSL Courses & Deaf Awareness training in schools, hospitals, fire services, hospices, local government and to all GP clinical and non-clinical staff across Bedford.

We have received funding to provide wellbeing and information events focusing on sexual health, diabetes, mental wellbeing, and fitness. Through these sessions, we will develop partnerships with organisations such as iCash, Bedford Diabetes, Diabetes UK, Ceroc Dancing, DeeSigns Foundation and Healthwatch Bedford Borough. We have additional partners scheduled for the upcoming year.

Financial review

The charity's activities continue to extend as a result of increases in funding obtained. Future plans include making a substantial funding application to the National Lottery which, if approved, will expand our staffed team to support the charity to grow and become sustainable into the next decade. The funding application will include a move to permanent premises offering Access Bedford a home and allowing us to continue to provide services to support and empower our deaf service users

Access Bedford

Trustees' Annual Report *(continued)*

Year ended 31 March 2024

Trustees' responsibilities statement

The trustees are responsible for preparing the trustees' report and the financial statements in accordance with applicable law and United Kingdom Accounting Standards (United Kingdom Generally Accepted Accounting Practice).

The law applicable to charities in England and Wales requires the charity trustees to prepare financial statements for each year which give a true and fair view of the state of affairs of the charity and of the incoming resources and application of resources, of the charity for that period.

In preparing these financial statements, the trustees are required to:

- select suitable accounting policies and then apply them consistently;
- observe the methods and principles in the applicable Charities SORP;
- make judgments and accounting estimates that are reasonable and prudent;
- prepare the financial statements on the going concern basis unless it is inappropriate to presume that the charity will continue in business.

The trustees are responsible for keeping adequate accounting records that are sufficient to show and explain the charity's transactions and disclose with reasonable accuracy at any time the financial position of the charity and enable them to ensure that the financial statements comply with the Charities Act 2011, the applicable Charities (Accounts and Reports) Regulations, and the provisions of the Trust Deed. They are also responsible for safeguarding the assets of the charity and hence for taking reasonable steps for the prevention and detection of fraud and other irregularities.

The trustees' annual report was approved on 18th October 2024 and signed on behalf of the board of trustees by:



Mrs H Bolton
Trustee

Access Bedford

Independent Examiner's Report to the Trustees of Access Bedford

Year ended 31 March 2024

I report to the trustees on my examination of the financial statements of Access Bedford ('the charity') for the year ended 31 March 2024.

Responsibilities and basis of report

As the trustees of the charity you are responsible for the preparation of the financial statements in accordance with the requirements of the Charities Act 2011 ('the Act').

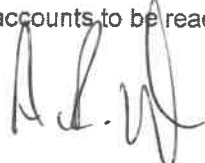
I report in respect of my examination of the charity's financial statements carried out under section 145 of the 2011 Act and in carrying out my examination I have followed all the applicable Directions given by the Charity Commission under section 145(5)(b) of the Act.

Independent examiner's statement

I have completed my examination. I confirm that no material matters have come to my attention in connection with the examination giving me cause to believe that in any material respect:

1. accounting records were not kept in respect of the charity as required by section 130 of the Act; or
2. the financial statements do not accord with those records; or
3. the financial statements do not comply with the applicable requirements concerning the form and content of accounts set out in the Charities (Accounts and Reports) Regulations 2008 other than any requirement that the accounts give a 'true and fair' view which is not a matter considered as part of an independent examination.

I have no concerns and have come across no other matters in connection with the examination to which attention should be drawn in this report in order to enable a proper understanding of the accounts to be reached.



Andrew Upton FCCA
Independent Examiner

19th December 2024

Access Bedford
Statement of Financial Activities
Year ended 31 March 2024

		2024			2023
	Note	Unrestricted funds £	Restricted funds £	Total funds £	Total funds £
Income and endowments					
Donations and legacies	4	20,516	6,019	26,535	31,575
Total income		<u>20,516</u>	<u>6,019</u>	<u>26,535</u>	<u>31,575</u>
Expenditure					
Expenditure on charitable activities	5,6	25,145	4,058	29,203	19,241
Total expenditure		<u>25,145</u>	<u>4,058</u>	<u>29,203</u>	<u>19,241</u>
Net (expenditure)/income and net movement in funds					
		<u>(4,629)</u>	<u>1,961</u>	<u>(2,668)</u>	<u>12,334</u>
Reconciliation of funds					
Total funds brought forward		17,649	3,865	21,514	9,180
Total funds carried forward		<u>13,020</u>	<u>5,826</u>	<u>18,846</u>	<u>21,514</u>

The statement of financial activities includes all gains and losses recognised in the year. All income and expenditure derive from continuing activities.

The notes on pages 7 to 12 form part of these financial statements.

Access Bedford
Statement of Financial Position
31 March 2024

	Note	2024 £	2023 £
Current assets			
Cash at bank and in hand		18,846	<u>21,514</u>
Net current assets		<u>18,846</u>	<u>21,514</u>
Total assets less current liabilities		<u>18,846</u>	<u>21,514</u>
Funds of the charity			
Restricted funds		5,826	3,865
Unrestricted funds		<u>13,020</u>	<u>17,649</u>
Total charity funds	10	<u>18,846</u>	<u>21,514</u>

These financial statements were approved by the board of trustees and authorised for issue on ~~18th December 2024~~ and are signed on behalf of the board by:



Mrs H Bolton
Trustee



Mrs R James
Trustee

The notes on pages 7 to 12 form part of these financial statements.

Access Bedford

Notes to the Financial Statements

Year ended 31 March 2024

1. General information

The charity is a public benefit entity and a registered charity in England and Wales and is unincorporated. The address of the principal office is 40 Kimbolton Road, Bedford, MK40 2NR.

2. Statement of compliance

These financial statements have been prepared in compliance with FRS 102, 'The Financial Reporting Standard applicable in the UK and the Republic of Ireland', the Statement of Recommended Practice applicable to charities preparing their accounts in accordance with the Financial Reporting Standard applicable in the UK and Republic of Ireland (FRS 102) (Charities SORP (FRS 102)) and the Charities Act 2011.

3. Accounting policies

Basis of preparation

The financial statements have been prepared on the historical cost basis, as modified by the revaluation of certain financial assets and liabilities and investment properties measured at fair value through income or expenditure.

The financial statements are prepared in sterling, which is the functional currency of the entity.

Going concern

There are no material uncertainties about the charity's ability to continue.

Judgements and key sources of estimation uncertainty

The preparation of the financial statements requires management to make judgements, estimates and assumptions that affect the amounts reported. These estimates and judgements are continually reviewed and are based on experience and other factors, including expectations of future events that are believed to be reasonable under the circumstances.

Fund accounting

Unrestricted funds are available for use at the discretion of the trustees to further any of the charity's purposes.

Designated funds are unrestricted funds earmarked by the trustees for particular future project or commitment.

Restricted funds are subjected to restrictions on their expenditure declared by the donor or through the terms of an appeal, and fall into one of two sub-classes: restricted income funds or endowment funds.

Access Bedford

Notes to the Financial Statements *(continued)*

Year ended 31 March 2024

3. Accounting policies *(continued)*

Incoming resources

All incoming resources are included in the statement of financial activities when entitlement has passed to the charity; it is probable that the economic benefits associated with the transaction will flow to the charity and the amount can be reliably measured. The following specific policies are applied to particular categories of income:

- income from donations or grants is recognised when there is evidence of entitlement to the gift, receipt is probable and its amount can be measured reliably.
- legacy income is recognised when receipt is probable and entitlement is established.
- income from donated goods is measured at the fair value of the goods unless this is impractical to measure reliably, in which case the value is derived from the cost to the donor or the estimated resale value. Donated facilities and services are recognised in the accounts when received if the value can be reliably measured. No amounts are included for the contribution of general volunteers.
- income from contracts for the supply of services is recognised with the delivery of the contracted service. This is classified as unrestricted funds unless there is a contractual requirement for it to be spent on a particular purpose and returned if unspent, in which case it may be regarded as restricted.

Resources expended

Expenditure is recognised on an accruals basis as a liability is incurred. Expenditure includes any VAT which cannot be fully recovered, and is classified under headings of the statement of financial activities to which it relates:

- expenditure on raising funds includes the costs of all fundraising activities, events, non-charitable trading activities, and the sale of donated goods.
- expenditure on charitable activities includes all costs incurred by a charity in undertaking activities that further its charitable aims for the benefit of its beneficiaries, including those support costs and costs relating to the governance of the charity apportioned to charitable activities.
- other expenditure includes all expenditure that is neither related to raising funds for the charity nor part of its expenditure on charitable activities.

All costs are allocated to expenditure categories reflecting the use of the resource. Direct costs attributable to a single activity are allocated directly to that activity. Shared costs are apportioned between the activities they contribute to on a reasonable, justifiable and consistent basis.

Financial instruments

A financial asset or a financial liability is recognised only when the charity becomes a party to the contractual provisions of the instrument.

Basic financial instruments are initially recognised at the amount receivable or payable including any related transaction costs.

Current assets and current liabilities are subsequently measured at the cash or other consideration expected to be paid or received and not discounted.

Access Bedford

Notes to the Financial Statements *(continued)*

Year ended 31 March 2024

3. Accounting policies *(continued)*

Financial instruments *(continued)*

Debt instruments are subsequently measured at amortised cost.

Where investments in shares are publicly traded or their fair value can otherwise be measured reliably, the investment is subsequently measured at fair value with changes in fair value recognised in income and expenditure. All other such investments are subsequently measured at cost less impairment.

Other financial instruments, including derivatives, are initially recognised at fair value, unless payment for an asset is deferred beyond normal business terms or financed at a rate of interest that is not a market rate, in which case the asset is measured at the present value of the future payments discounted at a market rate of interest for a similar debt instrument.

Other financial instruments are subsequently measured at fair value, with any changes recognised in the statement of financial activities, with the exception of hedging instruments in a designated hedging relationship.

Financial assets that are measured at cost or amortised cost are reviewed for objective evidence of impairment at the end of each reporting date. If there is objective evidence of impairment, an impairment loss is recognised under the appropriate heading in the statement of financial activities in which the initial gain was recognised.

For all equity instruments regardless of significance, and other financial assets that are individually significant, these are assessed individually for impairment. Other financial assets are either assessed individually or grouped on the basis of similar credit risk characteristics.

Any reversals of impairment are recognised immediately, to the extent that the reversal does not result in a carrying amount of the financial asset that exceeds what the carrying amount would have been had the impairment not previously been recognised.

4. Donations and legacies

	Unrestricted Funds £	Restricted Funds £	Total Funds 2024 £
Grants			
Grants and donations receivable	<u>20,516</u>	<u>6,019</u>	<u>26,535</u>

	Unrestricted Funds £	Restricted Funds £	Total Funds 2023 £
Grants			
Grants and donations receivable	<u>28,405</u>	<u>3,170</u>	<u>31,575</u>

Access Bedford

Notes to the Financial Statements *(continued)*

Year ended 31 March 2024

5. Expenditure on charitable activities by fund type

	Unrestricted Funds £	Restricted Funds £	Total Funds 2024 £
Support costs	<u>25,145</u>	<u>4,058</u>	<u>29,203</u>
	Unrestricted Funds £	Restricted Funds £	Total Funds 2023 £
Support costs	<u>16,751</u>	<u>2,490</u>	<u>19,241</u>

6. Expenditure on charitable activities by activity type

	Activities undertaken directly £	Total funds 2024 £	Total fund 2023 £
Support costs	<u>29,203</u>	<u>29,203</u>	<u>19,241</u>

7. Independent examination fees

	2024 £	2023 £
Fees payable to the independent examiner for: Independent examination of the financial statements	<u>120</u>	<u>—</u>

8. Staff costs

The average head count of employees during the year was Nil (2023: Nil).

No employee received employee benefits of more than £60,000 during the year (2023: Nil).

9. Trustee remuneration and expenses

No salaries were paid to any of the trustees although interpreter and translation fees totalling £2,095 (2023 - £655) were paid to Mrs H Bolton.

Access Bedford

Notes to the Financial Statements *(continued)*

Year ended 31 March 2024

10. Analysis of charitable funds

Unrestricted funds

	At 1 April 2023	Income	Expenditure	At 31 March 2024
	£	£	£	£
General funds	17,649	20,516	(25,145)	13,020

	At 1 April 2022	Income	Expenditure	At 31 March 2023
	£	£	£	£
General funds	5,995	28,405	(16,751)	17,649

Restricted funds

	At 1 April 2023	Income	Expenditure	At 31 March 2024
	£	£	£	£
Restricted Fund 1 - NHS Bedfordshire CCG	3,185	-	(1,032)	2,153
Restricted Fund 2 - Together Fund	-	1,758	(1,758)	-
Restricted Fund 3 - Deaf Coffee Club	680	1,128	(792)	1,016
Restricted fund 4 - Family signing	-	3,133	(476)	2,657
	<u>3,865</u>	<u>6,019</u>	<u>(4,058)</u>	<u>5,826</u>

	At 1 April 2022	Income	Expenditure	At 31 March 2023
	£	£	£	£
Restricted Fund 1 - NHS Bedfordshire CCG	3,185	-	-	3,185
Restricted Fund 2 - Together Fund	-	2,490	(2,490)	-
Restricted Fund 3 - Deaf Coffee Club	-	680	-	680
Restricted fund 4 - Family signing	-	-	-	-
	<u>3,185</u>	<u>3,170</u>	<u>(2,490)</u>	<u>3,865</u>

Access Bedford

Notes to the Financial Statements *(continued)*

Year ended 31 March 2024

10. Analysis of charitable funds *(continued)*

NHS Bedfordshire CCG

Grant monies were received from the NHS to provide translation of English to British sign language on videos to be used on their social media channels to provide access for the deaf community.

Together Fund - UK Deaf Sport

This fund represents grant monies received from Sport England to provide taster activity sessions for the deaf community to take part in.

Deaf Coffee Club

Funding was provided from various sources to provide space for the deaf community to meet and socialise and to provide social activities for the group.

Family Signing

Grant monies received will enable the 12-month project to deliver monthly face to face classes to families of deaf children aged 0-6. The Sessions will be open to parents and up to 2 other primary carers for each child, with a maximum of 5 children per class.

11. Analysis of net assets between funds

	Unrestricted Funds £	Restricted Funds £	Total Funds 2024 £
Current assets	<u>13,020</u>	<u>5,826</u>	<u>18,846</u>

	Unrestricted Funds £	Restricted Funds £	Total Funds 2023 £
Current assets	<u>17,649</u>	<u>3,865</u>	<u>21,514</u>

Access Bedford
Management Information
Year ended 31 March 2024

The following pages do not form part of the financial statements.

Access Bedford

Detailed Statement of Financial Activities

Year ended 31 March 2024

	2024 £	2023 £
Income and endowments		
Donations and legacies		
Grants and donations receivable	26,535	31,575
	<u> </u>	<u> </u>
Total income	<u>26,535</u>	<u>31,575</u>
Expenditure		
Expenditure on charitable activities		
Interpreter & translation fee	4,312	6,894
Purchases	3,100	3,771
Instructor fees	4,005	1,735
Room hire	2,915	1,364
Training costs	2,019	224
Administration support	10,494	2,250
Insurance	227	188
Printing, postage & stationery	103	243
Travelling costs	57	270
Accountancy	386	913
Subscription	396	216
Computer costs	240	421
Telephone	170	—
Website costs	779	545
Sundries	—	207
	<u> </u>	<u> </u>
	<u>29,203</u>	<u>19,241</u>
	<u> </u>	<u> </u>
Total expenditure	<u>29,203</u>	<u>19,241</u>
	<u> </u>	<u> </u>
Net (expenditure)/income	<u>(2,668)</u>	<u>12,334</u>

ACCESS BEDFORD

England & Wales - Charity number 1162947

Accounts

CHARITY REGISTRATION NUMBER: 1162947

Access Bedford
Unaudited Financial Statements
31 March 2023

Access Bedford
Financial Statements
Year ended 31 March 2023

	Page
Trustees' annual report	1
Independent examiner's report to the trustees	4
Statement of financial activities	5
Statement of financial position	6
Notes to the financial statements	7
The following pages do not form part of the financial statements	
Detailed statement of financial activities	13

Access Bedford
Trustees' Annual Report
Year ended 31 March 2023

The trustees present their report and the unaudited financial statements of the charity for the year ended 31 March 2023.

Reference and administrative details

Registered charity name Access Bedford
Charity registration number 1162947
Principal office 14 Harrow Piece
 Maulden
 Beds
 MK45 2DG

The trustees

Mrs H Bolton	
Mrs C Wright	
Mrs A Tree	(Resigned 21 May 2022)
Mrs E McAllister	(Appointed 21 May 2022)

Mrs R James was appointed as a trustee on 3 May 2023.
Mrs E McAllister resigned on 20 May 2023.

Structure, governance and management

Access Bedford is a deaf-lead unincorporated charity managed by a board of trustees with the assistance of a part-time paid administration manager and a volunteer committee. The committee is made up of deaf and hard of hearing individuals from the Bedfordshire area who help the trustees understand the needs of the local deaf community in order to determine the services on offer.

Objectives and activities

The objectives of the charity are to empower the local deaf community, reduce local isolation and improve physical and mental wellbeing through events, support, training and the provision of free access to qualified interpreters. We also aim to improve inclusivity within Bedford by working with individuals and service providers in the hearing community, to improve deaf awareness and understanding through training, education and the creation of inclusive events and activities.

Access Bedford

Trustees' Annual Report *(continued)*

Year ended 31 March 2023

Achievements and performance

Through our DeafSpace Support provision we regularly work with families in the local area, providing support in all areas of life, from booking travel and job seeking to accessing health care and filing HMRC tax returns.

Set up and deliver two self-funding deaf-led fitness clubs to help improve the physical and mental wellbeing of our deaf community and also promote inclusion through welcoming hearing people to the activities.

Working with hearing parents of deaf children to support and encourage families to learn BSL and empower deaf children to access their primary language.

Delivery of Deaf Awareness training in schools, hospitals, fire services, hospices, local government and to all GP clinical and non-clinical staff across Bedford.

Delivery introduction and level 1 BSL courses to families in Bedford.

Provide signed content for The Higgins Gallery.

Organised BSL fluent volunteers to support the deaf area at Bedford parks concerts.

Work with partner organisations to set up the UK's first 'Deafhelp' email address, used in Bedford hospital to enable deaf patients to contact help desk services without needing to go through a telephone switchboard.

Financial review

The charity's activities continue to extend as a result of increases in funding obtained. Future plans include expanding our staffed team to support the charity to grow and become sustainable into the next decade. To increase our DeafSpace provision as the core of the charity in order to truly support and empower our deaf service users. To continue to provide BSL courses in Bedford to continue to create inclusivity, which will require us to support the training of more teachers.

Trustees' responsibilities statement

The trustees are responsible for preparing the trustees' report and the financial statements in accordance with applicable law and United Kingdom Accounting Standards (United Kingdom Generally Accepted Accounting Practice).

The law applicable to charities in England and Wales requires the charity trustees to prepare financial statements for each year which give a true and fair view of the state of affairs of the charity and of the incoming resources and application of resources, of the charity for that period.

In preparing these financial statements, the trustees are required to:

- select suitable accounting policies and then apply them consistently;
- observe the methods and principles in the applicable Charities SORP;
- make judgments and accounting estimates that are reasonable and prudent;
- prepare the financial statements on the going concern basis unless it is inappropriate to presume that the charity will continue in business.

Access Bedford

Trustees' Annual Report *(continued)*

Year ended 31 March 2023

The trustees are responsible for keeping adequate accounting records that are sufficient to show and explain the charity's transactions and disclose with reasonable accuracy at any time the financial position of the charity and enable them to ensure that the financial statements comply with the Charities Act 2011, the applicable Charities (Accounts and Reports) Regulations, and the provisions of the Trust Deed. They are also responsible for safeguarding the assets of the charity and hence for taking reasonable steps for the prevention and detection of fraud and other irregularities.

The trustees' annual report was approved on 21/09/23 and signed on behalf of the board of trustees by:



Mrs H Bolton
Trustee

Access Bedford

Independent Examiner's Report to the Trustees of Access Bedford

Year ended 31 March 2023

I report to the trustees on my examination of the financial statements of Access Bedford ('the charity') for the year ended 31 March 2023.

Responsibilities and basis of report

As the trustees of the charity you are responsible for the preparation of the financial statements in accordance with the requirements of the Charities Act 2011 ('the Act').

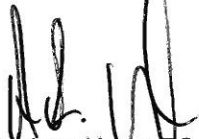
I report in respect of my examination of the charity's financial statements carried out under section 145 of the 2011 Act and in carrying out my examination I have followed all the applicable Directions given by the Charity Commission under section 145(5)(b) of the Act.

Independent examiner's statement

I have completed my examination. I confirm that no material matters have come to my attention in connection with the examination giving me cause to believe that in any material respect:

1. accounting records were not kept in respect of the charity as required by section 130 of the Act; or
2. the financial statements do not accord with those records; or
3. the financial statements do not comply with the applicable requirements concerning the form and content of accounts set out in the Charities (Accounts and Reports) Regulations 2008 other than any requirement that the accounts give a 'true and fair' view which is not a matter considered as part of an independent examination.

I have no concerns and have come across no other matters in connection with the examination to which attention should be drawn in this report in order to enable a proper understanding of the accounts to be reached.



Andrew Upton FCCA
Independent Examiner

21st September 2023

Access Bedford
Statement of Financial Activities
Year ended 31 March 2023

		Unrestricted funds	2023 Restricted funds	Total funds	2022 Total funds
	Note	£	£	£	£
Income					
Grants and donations	4	28,405	3,170	31,575	10,461
Total income		<u>28,405</u>	<u>3,170</u>	<u>31,575</u>	<u>10,461</u>
Expenditure					
Expenditure on charitable activities	5,6	16,751	2,490	19,241	15,071
Total expenditure		<u>16,751</u>	<u>2,490</u>	<u>19,241</u>	<u>15,071</u>
Net income/(expenditure) and net movement in funds					
		<u>11,654</u>	<u>680</u>	<u>12,334</u>	<u>(4,610)</u>
Reconciliation of funds					
Total funds brought forward		<u>5,995</u>	<u>3,185</u>	<u>9,180</u>	<u>13,790</u>
Total funds carried forward		<u>17,649</u>	<u>3,865</u>	<u>21,514</u>	<u>9,180</u>

The statement of financial activities includes all gains and losses recognised in the year. All income and expenditure derive from continuing activities.

The notes on pages 7 to 11 form part of these financial statements.

Access Bedford
Statement of Financial Position
31 March 2023

	Note	2023 £	2022 £
Current assets			
Cash at bank and in hand		21,514	9,180
Net current assets		<u>21,514</u>	<u>9,180</u>
Total assets less current liabilities		<u>21,514</u>	<u>9,180</u>
Funds of the charity			
Restricted funds		3,865	3,185
Unrestricted funds		17,649	5,995
Total charity funds	9	<u>21,514</u>	<u>9,180</u>

These financial statements were approved by the board of trustees and authorised for issue on 21/09/23 and are signed on behalf of the board by:



Mrs H Bolton
Trustee

The notes on pages 7 to 11 form part of these financial statements.

Access Bedford

Notes to the Financial Statements

Year ended 31 March 2023

1. General information

The charity is a public benefit entity and a registered charity in England and Wales and is unincorporated. The address of the principal office is 14 Harrow Piece, Maulden, Beds, MK45 2DG.

2. Statement of compliance

These financial statements have been prepared in compliance with FRS 102, 'The Financial Reporting Standard applicable in the UK and the Republic of Ireland', the Statement of Recommended Practice applicable to charities preparing their accounts in accordance with the Financial Reporting Standard applicable in the UK and Republic of Ireland (FRS 102) (Charities SORP (FRS 102)) and the Charities Act 2011.

3. Accounting policies

Basis of preparation

The financial statements have been prepared on the historical cost basis, as modified by the revaluation of certain financial assets and liabilities and investment properties measured at fair value through income or expenditure.

The financial statements are prepared in sterling, which is the functional currency of the entity.

Going concern

There are no material uncertainties about the charity's ability to continue.

Judgements and key sources of estimation uncertainty

The preparation of the financial statements requires management to make judgements, estimates and assumptions that affect the amounts reported. These estimates and judgements are continually reviewed and are based on experience and other factors, including expectations of future events that are believed to be reasonable under the circumstances.

Fund accounting

Unrestricted funds are available for use at the discretion of the trustees to further any of the charity's purposes.

Designated funds are unrestricted funds earmarked by the trustees for particular future project or commitment.

Restricted funds are subjected to restrictions on their expenditure declared by the donor or through the terms of an appeal, and fall into one of two sub-classes: restricted income funds or endowment funds.

Access Bedford

Notes to the Financial Statements *(continued)*

Year ended 31 March 2023

3. Accounting policies *(continued)*

Incoming resources

All incoming resources are included in the statement of financial activities when entitlement has passed to the charity; it is probable that the economic benefits associated with the transaction will flow to the charity and the amount can be reliably measured. The following specific policies are applied to particular categories of income:

- income from donations or grants is recognised when there is evidence of entitlement to the gift, receipt is probable and its amount can be measured reliably.
- legacy income is recognised when receipt is probable and entitlement is established.
- income from donated goods is measured at the fair value of the goods unless this is impractical to measure reliably, in which case the value is derived from the cost to the donor or the estimated resale value. Donated facilities and services are recognised in the accounts when received if the value can be reliably measured. No amounts are included for the contribution of general volunteers.
- income from contracts for the supply of services is recognised with the delivery of the contracted service. This is classified as unrestricted funds unless there is a contractual requirement for it to be spent on a particular purpose and returned if unspent, in which case it may be regarded as restricted.

Resources expended

Expenditure is recognised on an accruals basis as a liability is incurred. Expenditure includes any VAT which cannot be fully recovered, and is classified under headings of the statement of financial activities to which it relates:

- expenditure on raising funds includes the costs of all fundraising activities, events, non-charitable trading activities, and the sale of donated goods.
- expenditure on charitable activities includes all costs incurred by a charity in undertaking activities that further its charitable aims for the benefit of its beneficiaries, including those support costs and costs relating to the governance of the charity apportioned to charitable activities.
- other expenditure includes all expenditure that is neither related to raising funds for the charity nor part of its expenditure on charitable activities.

All costs are allocated to expenditure categories reflecting the use of the resource. Direct costs attributable to a single activity are allocated directly to that activity. Shared costs are apportioned between the activities they contribute to on a reasonable, justifiable and consistent basis.

Financial instruments

A financial asset or a financial liability is recognised only when the charity becomes a party to the contractual provisions of the instrument.

Basic financial instruments are initially recognised at the amount receivable or payable including any related transaction costs.

Current assets and current liabilities are subsequently measured at the cash or other consideration expected to be paid or received and not discounted.

Access Bedford

Notes to the Financial Statements *(continued)*

Year ended 31 March 2023

3. Accounting policies *(continued)*

Financial instruments *(continued)*

Debt instruments are subsequently measured at amortised cost.

Where investments in shares are publicly traded or their fair value can otherwise be measured reliably, the investment is subsequently measured at fair value with changes in fair value recognised in income and expenditure. All other such investments are subsequently measured at cost less impairment.

Other financial instruments, including derivatives, are initially recognised at fair value, unless payment for an asset is deferred beyond normal business terms or financed at a rate of interest that is not a market rate, in which case the asset is measured at the present value of the future payments discounted at a market rate of interest for a similar debt instrument.

Other financial instruments are subsequently measured at fair value, with any changes recognised in the statement of financial activities, with the exception of hedging instruments in a designated hedging relationship.

Financial assets that are measured at cost or amortised cost are reviewed for objective evidence of impairment at the end of each reporting date. If there is objective evidence of impairment, an impairment loss is recognised under the appropriate heading in the statement of financial activities in which the initial gain was recognised.

For all equity instruments regardless of significance, and other financial assets that are individually significant, these are assessed individually for impairment. Other financial assets are either assessed individually or grouped on the basis of similar credit risk characteristics.

Any reversals of impairment are recognised immediately, to the extent that the reversal does not result in a carrying amount of the financial asset that exceeds what the carrying amount would have been had the impairment not previously been recognised.

4. Grants and donations

	Unrestricted Funds £	Restricted Funds £	Total Funds 2023 £
Grants			
Grants and donations receivable	<u>28,405</u>	<u>3,170</u>	<u>31,575</u>

	Unrestricted Funds £	Restricted Funds £	Total Funds 2022 £
Grants			
Grants and donations receivable	<u>7,586</u>	<u>2,875</u>	<u>10,461</u>

Access Bedford

Notes to the Financial Statements *(continued)*

Year ended 31 March 2023

5. Expenditure on charitable activities by fund type

	Unrestricted Funds £	Restricted Funds £	Total Funds 2023 £
Support costs	<u>16,751</u>	<u>2,490</u>	<u>19,241</u>
	Unrestricted Funds £	Restricted Funds £	Total Funds 2022 £
Support costs	<u>14,521</u>	<u>550</u>	<u>15,071</u>

6. Expenditure on charitable activities by activity type

	Support costs £	Total funds 2023 £	Total fund 2022 £
Governance costs	<u>19,241</u>	<u>19,241</u>	<u>15,071</u>

7. Staff costs

The average head count of employees during the year was Nil (2022: Nil).

No employee received employee benefits of more than £60,000 during the year (2022: Nil).

8. Trustee remuneration and expenses

No salaries were paid to any of the trustees although expenses totalling £655 (2022 - £199) were reimbursed to Mrs H Bolton.

9. Analysis of charitable funds

Unrestricted funds

	At 1 April 2022 £	Income £	Expenditure £	At 31 March 2023 £
General funds	<u>5,995</u>	<u>28,405</u>	<u>(16,751)</u>	<u>17,649</u>
	At 1 April 2021 £	Income £	Expenditure £	At 31 March 2022 £
General funds	<u>12,930</u>	<u>7,586</u>	<u>(14,521)</u>	<u>5,995</u>

Access Bedford

Notes to the Financial Statements *(continued)*

Year ended 31 March 2023

9. Analysis of charitable funds *(continued)*

Restricted funds

	At 1 April 2022 £	Income £	Expenditure £	At 31 March 2023 £
Restricted Fund 1 - NHS Bedfordshire CCG	3,185	–	–	3,185
Restricted Fund 2 - Together Fund	–	2,490	(2,490)	–
Restricted Fund 3 - Deaf Coffee Club	–	680	–	680
	<u>3,185</u>	<u>3,170</u>	<u>(2,490)</u>	<u>3,865</u>

	At 1 April 2021 £	Income £	Expenditure £	At 31 March 2022 £
Restricted Fund 1 - NHS Bedfordshire CCG	860	2,875	(550)	3,185
Restricted Fund 2 - Together Fund	–	–	–	–
Restricted Fund 3 - Deaf Coffee Club	–	–	–	–
	<u>860</u>	<u>2,875</u>	<u>(550)</u>	<u>3,185</u>

NHS Bedfordshire CCG

Grant monies were received from the NHS to provide translation of English to British sign language on videos to be used on their social media channels to provide access for the deaf community.

Together Fund - UK Deaf Sport

This fund represents grant monies received from Sport England to provide taster activity sessions for the deaf community to take part in.

Deaf Coffee Club

Funding was provided from various sources to provide space for the deaf community to meet and socialise and to provide social activities for the group.

10. Analysis of net assets between funds

	Unrestricted Funds £	Restricted Funds £	Total Funds 2023 £
Current assets	<u>17,649</u>	<u>3,865</u>	<u>21,514</u>

	Unrestricted Funds £	Restricted Funds £	Total Funds 2022 £
Current assets	<u>5,995</u>	<u>3,185</u>	<u>9,180</u>

Access Bedford
Management Information
Year ended 31 March 2023

The following pages do not form part of the financial statements.

Access Bedford

Detailed Statement of Financial Activities

Year ended 31 March 2023

	2023	2022
	£	£
Income		
Grants and donations receivable	31,575	10,461
Expenditure		
Interpreter & translation fees	6,894	8,385
Purchases	3,771	2,033
Instructor fees	1,735	390
Room hire costs	1,364	2,458
Training costs	224	39
Administration support	2,250	-
Insurance	188	-
Printing, postage & stationery	243	-
Travelling costs	270	59
Accountancy fees	913	385
Subscriptions	216	288
Computer software costs	421	622
Website costs	545	412
Sundries	207	-
	<u>19,241</u>	<u>15,071</u>
Net income/(expenditure)	<u>12,334</u>	<u>(4,610)</u>

ACCESS BEDFORD

England & Wales - Charity number 1162947

Accounts

The cover features a dark blue background with abstract green geometric shapes on the left and right sides. The text is centered in white.

ACCESS BEDFORD
Annual report
2021/22



Welcome to our Access Bedford Annual Report 2021/22

Catherine Wright Chairperson of Access Bedford and Trustee since 2014.

My name is Catherine, and I am Chairperson of Access Bedford and have been a Trustee since 2014. Looking back all those years I'm very proud to see Access Bedford has achieved so much over the years to support deaf community in Bedford and around Bedfordshire.

- Last year we were able to do some more active things like badminton, boat trip, running festival and social meet up's...
- With Healthwatch we had a small deaf people only meeting to give feedback about lack of face-to-face contact during covid for the deaf community at medical appointments. With a full report being sent to the Care Quality Commission CQC.
- We Set up a deaf café with Luton Deaf community and over 40 people turned up, first time we seen all in face to face after covid and lovely to see them all together.
- Will have deaf community cafes with Luton in the future every 2 months (in café or deaf walks)
- I was lucky to go and support the BSL Act in London, it was amazing there was over 1000 people We went to support BSL, a lot of people there and great to support for the deaf community. The Act has now been passed and British sign language will be recognised as an official language.
- I also went along to City Lit Deaf Day which was great!



Welcome to our Access Bedford Annual Report 2021/22

Catherine Wright Chairperson of Access Bedford and Trustee since 2014.

It is Important that we continue

- Deaf coffee club that is open to any ages. Every two weeks
- Deaf space every week on a Friday, fantastic interpreters, and admin to support. We support deaf community Bedford with phone calls, e-mails etc.
- BSL café once a month for students to learn and work on their BSL in a safe space
- Finding opportunities for the Deaf community to meet up and socialise.

Financial Report

		This Year		
Receipts [In]			Payments [Out]	
Outreach	£2,515.54		AGM	0
Deaf Space	£2,572.64		General Running Costs /	0
Coronavirus	£0.00		Young at Heart	0
Just Giving	£0.00		Coronavirus	0
BSL Café	£0.00		BSL Café	0
Eventbrite	£0.00		Deaf Space	5433.88
Translation S	£1,800.00		Ad Hoc	0
Education	£500.00		Outreach	6246.46
NHS Beds CC	£2,875.00		Education	405
BSL Taster	0		Hidden Disabilities	0
			NHS Beds CCG	550
Totals	10263.18		Translation Services	2436.2
			BSL Taster	0
				15071.5
Balances brought forward				
		Bank -1	13943.5	
		Bank -2	44.49	
		Cash	0	
			13987.99	
Balances in hand at year end				
		Bank -1	9135.14	
		Bank -2	44.49	
		Cash	0	
			9179.63	



Welcome to our Access Bedford Annual Report 2021/22

Helene Bolton - Trustee of Access Bedford since 2018.

As you can see, we still have a healthy bank account, this money has come largely from fund raising donations and grants. Some of our money has come from income we have generated ourselves, over the last 12 months we have been working with the NHS CCG to create BSL Translated videos which have been posted on Social media, we have a small contract with them which they have just renewed.

We have been asked to provide BSL interpreters for Specsavers in Bedford, Luton, Dunstable and Biggleswade, so if you are a Specsavers client please ask for a BSL interpreter at your next appointment!

Also, we have been offering 6-week Basic BSL taster courses face to face and online, delivered by Deaf tutors to clients such as the Bedford & Luton Recovery college and Impact Housing Bedford.

All these things happen in the background, and you may not be aware that we do these things.

We have been a Charity partner with Bedford Running Festival for 4 years and each year this is an opportunity for us to raise money for Access Bedford, last year our 4 runners raised an amazing £1563.49



Welcome to our Access Bedford Annual Report 2021/22

Helene Bolton - Trustee of Access Bedford since 2018.

This money goes directly back into Access Bedford and pays for things like the room hire fee at Deaf Space drop in service and the costs associated in booking the Badminton courts.

We have 10 spaces for runners to take part this year and 4 have been filled already, we are looking for more people ready to take on the challenge of a 10k or half marathon event and Fundraise for us. Maybe you are interested in joining Team Access Bedford or maybe you know someone else who might be up for the challenge.

Funders

Here are just some of the funders we have received donations and small grants from. If you would like to raise money on our behalf or you can help with grant applications, we would love to hear from you.

Our Funders





The Trustees & Committee 2021/22

Trustees

Catherine Wright
Helene Bolton
Ally Tree



Committee

Lisa Charlish
Marie Biswell
Ciaran McCarthy
Tyler Webster

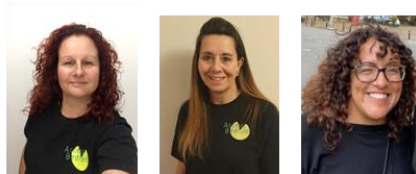


The Trustees & Committee 2022/23

2022/23

Trustees

Catherine Wright
Helene Bolton
Emma McAllister



Committee

Ciaran McCarthy
Lisa Charlish
Tyler Webster
Emily Andrews
Sadika Shahjanaan
Bob Rose



Please volunteer if you can, we can't do it alone.

2022/2023

- Raise awareness of the Deaf community
- Support the strong network of Deaf organisation's in and around Bedford
- Work together for a strong Deaf community through our collaboration projects, events newsletter, website and social media.

Collaborations in 2022



**DEAF & HEARING
TRAILBLAZERS**
THE UK'S EXCLUSIVE
TRAINING PROVIDER
FOR DEAF AND
HEARING PEOPLE.

Katie Gilmartin

Admin Assistant - Access Bedford

Katie is with us on a 6 month placement and is being supported by Action Deafness & Deaf & Hearing Trailblazers. Katie is hearing but is very keen to learn BSL while she is with us at Access Bedford.

RAD – Information & Guidance Service



Advice, Advocacy, Employment & Wellbeing
for deaf and hard of hearing people living in
Bedford, Central Bedfordshire, & Luton.



RAD can support you with:

- Filling in forms for benefits
- Translating English to BSL
- Making telephone calls
- Understanding bills
- Contacting your council
- Signposting to specialist services
- And much more!

Every Tuesday
10am - 4pm
Community Voluntary Service Bedfordshire
43 Bromham Rd, Bedford MK40 2AA

We also offer advice remotely by:
WhatsApp video call, Facetime or
ZOOM

For more information, email or send a BSL video message to:
advice@royaldeaf.org.uk. Text: 07773944281

www.royaldeaf.org.uk | 0300 688 2525
Registered Charity No. 1081949 | Company registered in England No. 3973353

We are also working with RAD to provide a new Information & Guidance service. The Deaf Space project will finish at the end of July as our funding from Lottery for All has finished.

RAD will offer their Information & Guidance service every Tuesday from 10am – 4pm.

We are really excited to be working with other Deaf organisations and to be able to provide more opportunities for our Deaf Community to meet up and receive the right support and guidance.

Events coming up soon

- BSL Art tour led by Peter Cook at the Higgins Museum
- John Bunyan boat trip with cream tea
- Deaf Celebration Event
- Panto at Milton Keynes Theatre
- Deaf community social walks at Priory Country park

Access Bedford

DEAF CELEBRATION 2022

FOR ONE NIGHT ONLY WE HAVE Tickets are £15 per person

THE GAVIN LILLEY COMEDY SHOW is coming to Bedford

The Gavin Lilley comedy show is coming to Bedford on **Sat 16th July** at **The Place Theatre** as part of our **Deaf Celebration Event**.

Over 16's events only

MORE INFO

DATE: 16th July 2022
 TIME: 7:30 - 9:30pm
 WHERE: The Place, Bradgate Road Bedford, MK43 0DE
 HOW TO GET TICKETS ...
 ONLINE: www.theplacebedford.org.uk
 PHONE: 01234 354321

FUNDED BY adept **BEDFORDHIRE RESPONSE FUND**

Access Bedford

Book your ticket NOW!

SOVEREIGN'S QUAY TO KEMPSTON AND RETURN

Enjoy a delicious hand made scone with clotted cream, strawberry jam and fresh strawberries with a tea or coffee.

HOW TO GET TICKETS:

Email us: accessbedford@outlook.com
 Text us: 07376268873

Tickets are available on a 1st come 1st served basis, the boat cruise lasts 2hrs and cream tea is included in the price. £15 per a person.

BOAT CRUISE & CREAM TEA

26th June at 2.30pm

£15

FUNDED BY adept

Access Bedford

SNOW WHITE & the SEVEN DWARFS

BSL Interpreted Show - Tuesday 20th December 2022

IT'S PANTO TIME!

Milton Keynes Theatre

Mirror, Mirror, on the wall, don't miss the fairest pantomime of them all!

WE HAVE 30 TICKETS AVAILABLE -

BSL interpreted show £20.00 per ticket.

BEDFORDHIRE RESPONSE FUND

When: 20th December 2022
 Time: 19.00
 Where: Milton Keynes Theatre

Access Bedford

COME & JOIN US

20th December 2022

Body & Soul Exhibition

Details of the image are 'Woman with Brooch' 1903 by Edward Munch.

FREE EVENT - please email thehiggins@bedford.gov.uk to reserve your place.

info@accessbedford.org.uk
07376 262 873

Date: Saturday 4th June 22
 Time: 11am - 1pm
 Where: The Higgins Museum & Art Gallery, Castle Lane, Bedford MK40 3XD

Join Peter from Access Bedford for this Deaf BSL tour of the Body & Soul exhibition followed by an art folding. This is **British Sign Language** events only - no oral instruction will be given.

FUNDED BY adept **BEDFORDHIRE RESPONSE FUND**

LUTON DEAF

Community

INVITE YOU

Social Walks

AT

Priory Country Park

ON 22ND MAY 2022 @ 10:30AM

The cover features a dark blue-grey background with abstract, overlapping green and yellow-green geometric shapes on the right side. The text is centered in white.

ACCESS BEDFORD
Annual Report
2021/22



Access Bedford

1 April 2021 to 31 March 2022

	This Year	Last Year
Receipts [In]		
Outreach	£2,515.54	£4,415.59
Deaf Space	£2,572.64	£0.00
Coronavirus	£0.00	£4,395.00
Just Giving	£0.00	£2,495.60
BSL Café	£0.00	£130.00
Eventbrite	£0.00	£109.20
Translation Services	£1,800.00	£0.00
Education	£500.00	£1,000.00
NHS Beds CCG	£2,875.00	£1,125.00
BSL Taster	£0.00	£630.00
Totals	£10,263.18	£14,300.39
Payments [Out]		
AGM	£0.00	£110.00
General Running Costs / Promo	£0.00	£1,432.66
Young at Heart	£0.00	£47.61
Coronavirus	£0.00	£4,458.10
BSL Café	£0.00	£50.00
Deaf Space	£5,433.88	£2,588.20
Ad Hoc	£0.00	£147.00
Outreach	£6,246.46	£0.00
Education	£405.00	£0.00
Hidden Disabilities	£0.00	£110.52
NHS Beds CCG	£550.00	£0.00
Translation Services	£2,436.20	£1,155.00
BSL Taster	£0.00	£250.00
Totals	£15,071.54	£10,349.09
Surplus or (deficit) for the year	-£4,808.36	£3,951.30
Balances brought forward		
Bank -1	£13,943.50	£9,992.20
Bank -2	£44.49	£44.49
Cash	£0.00	£0.00
	£13,987.99	£10,036.69
Balances in hand at year end		
Bank -1	£9,135.14	£13,943.50
Bank -2	£44.49	£44.49
Cash	£0.00	£0.00
	£9,179.63	£13,987.99

Assets and Liabilities: In addition to the above cash balances Access Bedford have assets and liabilities to the value of £0.00 there are no other assets or liabilities.

Prepared by: Claire Upton Signature & Date: [Signature] 25-4-2022

Reviewers Certificate: The above statements agree with the records and receipts of Access Bedford for the financial year ended 31 March 2022.

Reviewed by: [Signature] Signature & Date: [Signature] 25-4-2022

Notes: Helene Bolton

ACCESS BEDFORD

England & Wales - Charity number 1162947

Accounts

The cover features a white background with abstract green geometric shapes on the left and right sides. The shapes are composed of various shades of green, from light to dark, and are layered to create a sense of depth and movement. The text is centered in a bold, green, sans-serif font.

Access Bedford Annual Report 2020/2021

Access Bedford the Charity

We will empower, support and involve the D/deaf community to improve services locally.

The organisation started in April 2014 as a constituted group, moving to registered charity status in July 2015 as a Charitable Incorporated Organisation (CIO).

In 2020/21 Access Bedford had 3 trustees, who operated as voting members of the CIO. Chair Catherine Wright Treasurer Helene Bolton Secretary Ally Tree

Within the CIO constitution for Access Bedford, the three trustees can serve until the AGM in 2023. They meet as a committee every 4 – 6 weeks and make decisions on the work of the charity to help meet the charity objects. Currently there are no paid staff employed by Access Bedford. However, with the support of Action Deafness this year they will be looking to employ an Admin assistant and Social media Coordinator this year.

During 2020/21, there have been three non-voting members who have supported the charity and their work by attending meetings and supporting events. They are Lisa Charlish, Marie Biswell and Ciaran McCarthy. Non-voting members will be elected at each AGM.

Trustees and non-voting members are supported through induction and training. Meetings are in BSL with a voice over where needed.

Chairs Report



I have been a Trustee and the Chair of Access Bedford for a few years now and its lovely to see how we continue to support the deaf community in Bedford. I would like to start by saying thank you to our Trustees Helene and Ally and our volunteer committee members Lisa, Ciaran, and Marie for working so hard throughout the last year and keeping things going through Lockdown!

It has been fantastic to see how we have carried on supporting our deaf community through the pandemic and how we quickly moved to a virtual world setting up Zoom for social chats, bingo, quiz nights, BSL cafe, BSL taster sessions, family signing group and our committee meetings. We also managed to keep our vital Deaf space service going and kept in touch with our Young at heart group.

I would also like to thank one of our regular interpreters Sarah who has continued to work with us at Deaf Space, it has not been easy providing this support online, along with Marie, she also supported us to provide BSL video content so that our community could receive important local Covid news.

As the restrictions lift it has been great to see how Access Bedford has grown bigger and formed strong relationships with service providers and other local community groups. We have recently set up our new Active Access Bedford with the aim of reducing social isolation and improving healthy lifestyles. One of our most recent activities is weekly badminton sessions, which have proved to be successful. We hope to bring new activities and events for our community to take part in very soon; keep an eye on our social media for more information.

Lockdown has given us many extra challenges and as volunteers this extra workload always impacts on our own time, the COVID period has meant that we have had to work extremely hard to keep the charity going and our community informed and supported. Helene has played a big part in the day to day running of the charity providing extra admin support, coordinating activities, posting on our social media channels, and organising the committee. She has made the decision to take a step back from this and with the support of Action Deafness we are looking to recruit an Admin Assistant and Media Coordinator to the team.

We are very much looking forward to meeting up with you all after the summer holidays, please do check on our social media for more events and activities, and remember we are here to help too.

Thank you for your ongoing support and stay safe and well,
Catherine.

Our Year - Ally Tree Trustee

Last year we were looking forward to lock down easing, we didn't realise that it would happen again and again!

Access Bedford as a charity itself has grown and developed so much this year. This is thanks to the hard work of Helene, organising, doing admin, reminding us to do things! Without her, I would not have all these brilliant things to tell you about.

One of the big things which has happened in the background this year is the introduction of our funding streams where we have been looking at 5 key areas: deaf space, NHS translation services, general translation and interpreting, outreach, and education. My passion has always been education and so my involvement this year has been focussed on this. Let me tell you all the exciting things we have done to promote learning this year.

BSL café: This has been going on for many years now as a safe place for BSL learners of all levels to come and practice signing. I'm pleased to say that we have continued to provide this service for free throughout this year.

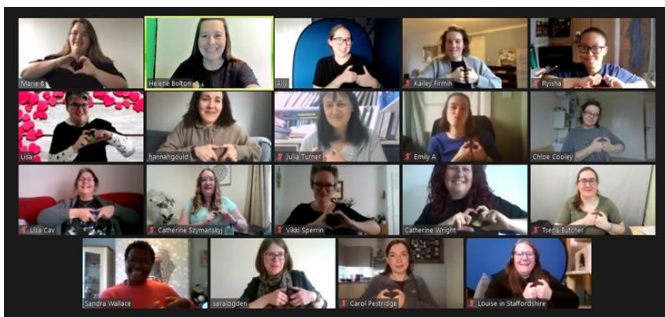
Due to lockdown rules and risk assessments, we have continued online through Zoom. Lots of people have missed the face-to-face interaction but there have been many positives to the experience too.

1. People from all over the country have been able to join us to practice. The furthest virtual distance travelled has been Scotland. One month we had 27 people turn up!
2. It has been much easier to support people learning at their level. Every month we have had a range of people from complete beginners to trainee interpreters joining in. The benefit of zoom is that it's possible to create 'breakout rooms' which means that you can make smaller groups, and swap groups, then bring everyone back together at the end.

We have also been really lucky to have some great topics to work on at different levels. From Christmas to International Women's Day, each level worked on a challenge for the topic and fed back to the whole group at the end.

For example, for the Valentines themed session in February, beginners and level 1 learned specific vocab about valentines and love. Level 2s practised conversation skills around the topics of best/worst valentine and how they met their partners. Level 3 and above went on a different tack, learning about the anatomy of a heart and what signs you might need for medical situations.

The highlight for BSL café has to be January when guest teacher John Smith delivered an amazing workshop on facial expression. It was fantastic... oh no wait that sign was not allowed!



Education Projects: There are three projects linked with education which Access Bedford has set up this year and there have been two BSL taster streams.

1. Free BSL taster session: 1.5 to 2 hours where people have learned basic signs such as the alphabet, numbers, questions and greetings, as well as a little bit about deaf awareness and how to break down communication barriers.

The charity has organised seven taster events over the last twelve months which is amazing, so many people in our local area now have that bit of understanding and can support deaf people in our community. Two taster sessions stand out as great examples of what we can do.

- i. We were approached by the Bedfordshire and Luton Recovery college, an organisation which supports people with mental health issues and diagnoses. It wasn't an easy session because normally on zoom each person is at home with their own camera and you can see them clearly and what they are signing. This session was different though, we were on a big TV and they were all on one screen, so small and so far away!
- ii. A special taster session provided to Sharman's Law in Bedford. Earlier in the year, Helen from Sharman's Law offered to speak to our deaf community about will writing. To say thank you for Helen's time and expertise, we invited Helen and the team to find out a bit more about BSL and deaf awareness. They were such a friendly group, my favourite thing was when we mentioned interpreter fees and they thought that sounded quite cheap! Well that's lawyers for you I suppose!

2. 5 Week BSL taster course: 5 weekly sessions for a small contribution. This year we have run three taster courses to teach people basic BSL conversation skills. Dominic Caswell, a local, qualified BSL tutor who is deaf himself, planned and delivered the courses, Topics included the alphabet, numbers, colours, directions, weather, transport. Dom also very kindly set up an online course for our delegates on his website bslonline.co.uk so they could continue practising between sessions.

3. Family Signing: Our project to help families of deaf children learn BSL. Quite a few families of deaf children in Bedfordshire have been asking about how to support their families in learning BSL and this has been a fascinating project to delve into.

When we researched and investigated, the options out there are BSL level 1 or baby signing groups. This is problematic. Level 1 isn't always what you want when trying to communicate with young children, and baby signing is aimed at hearing babies. Baby signing groups are fantastic for early communication, but they are usually run by a hearing person who may not have deaf awareness. They may not know about regional variations or may not even be using BSL signs!

We had a fantastic meeting with NDCS to talk about their family signing programme which is led by a deaf tutor and aimed specifically at families of deaf babies. This course wasn't quite right for the families in Bedford but it was a great help, so we know what we needed to look for.

We met with local deaf BSL tutor Emma McAllister who planned three fantastic zoom sessions for our families to get involved together learning BSL. Topics covered included family signs, feelings, food, and ideas of how to use BSL in conversation with your children. The parents who joined us for these sessions all had varying levels of BSL from beginner to level 2 and Emma supported each family brilliantly. The children were invited to join in as well, this was tricky on zoom but hopefully soon we can meet up with everyone in person to find out how to support them more going forward.

So that's what I've been involved in this year, no wonder I'm feeling exhausted!

Ally Tree - Trustee

The Money

Access Bedford does not have any debts, guarantees or liabilities. An asset log detailing equipment is maintained by the trustees. Charity trustees have complied with their duty to have due regard to the guidance on public benefit published by the commission in exercising their powers or duties.

Access Bedford does not have a reserves policy in place at present. The annual income does not meet the threshold for external auditing.

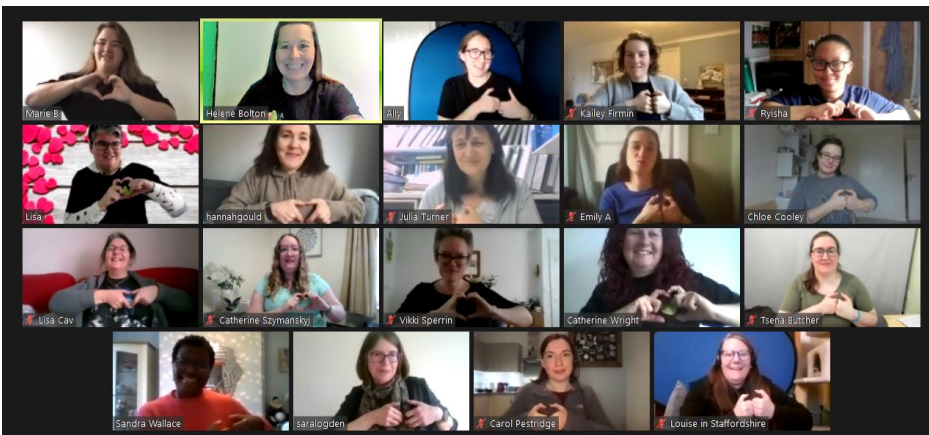
Detailed accounts can be shared on request or can be viewed at our website <https://accessbedford.org.uk>

Access Bedford Account

Starting balance 01.04.19 **£10,036.69**

Closing balance 31.03.19 **£13,987.99**

Our Virtual Year





To Our Funders

- National Lottery - Awards for All
- Harpur Trust
- Bedfordshire Response fund
- Adept
- Community Donations - Just Giving
- Co-op Community Fund

	This Year	Last Year
Receipts [In]		
Ad hoc donations	£4,415.59	£181.00
Young at Heart	£0.00	£10.00
Coronavirus	£4,395.00	£0.00
Bedford Half Marathon	£0.00	£40.00
Just Giving	£2,495.60	£2,013.03
Yumma	£0.00	£600.00
BSL Café	£130.00	£0.00
Eventbrite	£109.20	£207.50
Quiz	£0.00	£180.00
Lottery	£0.00	£6,895.00
Adept Education	£1,000.00	£0.00
NHS Beds. CCG	£1,125.00	£0.00
BSL Taster	£630.00	£0.00
Totals	£14,300.39	£10,126.53

Payments [Out]		
AGM	£110.00	£572.56
General Running Costs / Promo	£1,432.66	£49.66
Young at Heart	£47.61	£41.50
Hustings	£0.00	£231.58
Coronavirus	£4,458.10	£0.00
BSL Café	£50.00	£419.50
Deaf Space	£2,588.20	£3,046.93
Newsletter	£0.00	£169.70
Ad Hoc	£147.00	£144.40
Yumma	£0.00	£258.07
Bedford Half Marathon	£0.00	£712.01
Quiz	£0.00	£212.14
Hidden Disabilities	£110.52	£0.00
Workshops	£0.00	£670.83
Community Interpreting	£1,155.00	£0.00
BSL Taster	£250.00	£0.00
Totals	£10,349.09	£6,528.88
Surplus or (deficit) for the year	£3,951.30	£3,597.65

Balances brought forward	Bank -1	£9,992.20	£6,601.64
	Bank -2	£44.49	£44.49
	Cash	£0.00	£0.00
		£10,036.69	£6,646.13
Balances in hand at year end	Bank -1	£13,943.50	£9,992.20
	Bank -2	£44.49	£44.49
	Cash	£0.00	£0.00
		£13,987.99	£10,036.69

Assets and Liabilities: In addition to the above cash balances Access Bedford have assets and liabilities to the value of £0.00 there are no other assets or liabilities.

Prepared by: C UPTON Signature & Date: [Signature] 21.4.21

Reviewers Certificate: The above statements agree with the records and receipts of Access Bedford for the financial year ended 31 March 2021.

Reviewed by: H. BOSTON Signature & Date: [Signature] 20/4/21

Notes: